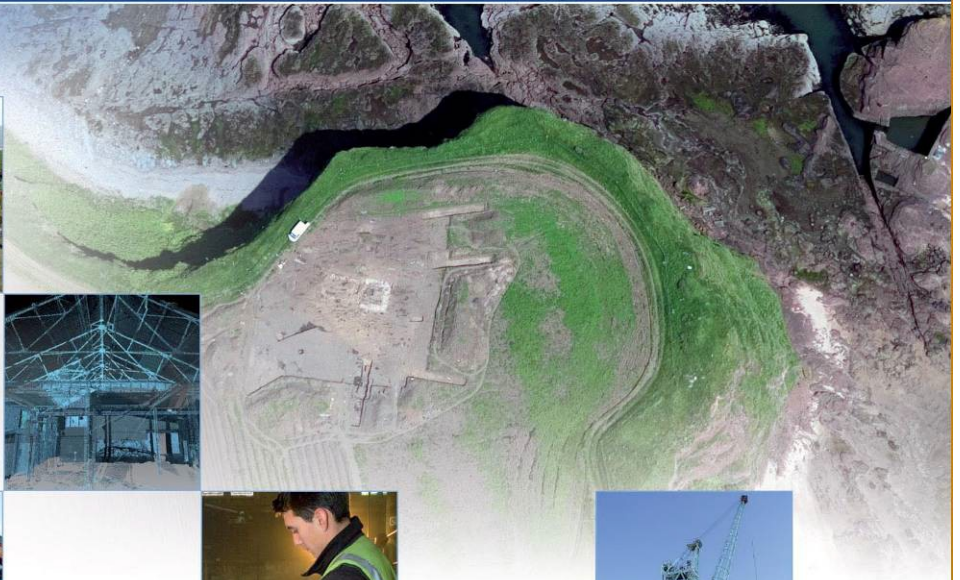


Oldfold Farm, North Deeside Road, Milltimber, Aberdeen: Archaeological Evaluation

AOC 22800

OASIS No. aocarcha1-200479

January 2015



ARCHAEOLOGY

HERITAGE

CONSERVATION

Oldfold Farm, North Deeside Road, Milltimber, Aberdeen:

Archaeological Evaluation

Data Structure Report

On Behalf of: **Cala Homes (North) Ltd**
Anderson House
1 Kingshill Park
Venture Drive
Arnhall Business Park
Westhill
AB32 6FL

National Grid Reference (NGR): **NJ 8664 0205**

AOC Project No: **22800**

Prepared by: **Jamie Humble**

Illustration by: **Jamie Humble**

Date of Fieldwork: **12th – 15th January 2015**

Date of Report: **20th January 2015**

This document has been prepared in accordance with AOC standard operating procedures.

Author: Jamie Humble **Date: 19/01/2015**

Approved by: Martin Cook **Date: 20/01/2015**

Draft/Final Report Stage: **Date: 20/01/2015**

Enquiries to: AOC Archaeology Group
Edgefield Industrial Estate
Edgefield Road
Loanhead
EH20 9SY

Tel. 0131 440 3593
Fax. 0131 440 3422
e-mail. edinburgh@aocarchaeology.com



Contents

	Page
List of Illustrations	2
List of Plates	2
List of Appendices.....	2
1 INTRODUCTION	4
2 HISTORICAL BACKGROUND	4
3 OBJECTIVES	6
4 METHODOLOGY	6
5 RESULTS	6
6 CONCLUSIONS AND RECOMMENDATIONS.....	7
7 REFERENCES	8
APPENDIX 1: EVALUATION TRENCH DESCRIPTIONS	10
APPENDIX 2: PHOTOGRAPHIC REGISTER	14
APPENDIX 3: 'DISCOVERY AND EXCAVATION IN SCOTLAND' REPORT	15

List of Illustrations

Figure 1: Site Location

Figure 2: Plan of evaluation trenches

List of Plates

Plate 1: Extract from Roy's map, ca. 1747 - 55

Plate 2: Extract from Ordnance Survey map, 1869

Plate 3: Stone filled pit [027], from south.

List of Appendices

Appendix 1: Evaluation Trench Descriptions

Appendix 2: Photographic Register

Appendix 3: *'Discovery and Excavation in Scotland'* Report

Summary

AOC Archaeology Group undertook an archaeological evaluation on behalf of Cala Homes (North) Ltd ahead of residential development of land at Oldfold Farm, North Deeside Road, Milltimber, Aberdeen (NGR: NJ 8664 0205). The phase 1 development area encompasses four separate fields along with an area of buildings and car park still in use.

A total of 20 evaluation trenches with an area of 4,220m² were excavated in the 4.9 ha area that was available for trenching in the phase 1 development area representing more than the 7% sample required. The evaluation revealed a simple stratigraphic sequence of thin topsoil overlying sandy clay glacial till subsoil. No significant archaeological features were identified during the evaluation.

1 INTRODUCTION

1.1 Background

1.1.1 An archaeological evaluation and excavation were required by Cala Homes (North) Ltd during residential development (Planning Ref P130378) of land at Oldfold Farm, North Deeside Road, Milltimber, Aberdeen. The scope of the works was determined by Aberdeen City Council Archaeology Service (ACCAS), who are temporarily advised by Mr Bruce Mann of Aberdeenshire Council Archaeology Service. The works were conducted according to the terms of a *Written Scheme of Investigation* (AOC 2013) approved by ACCAS and in accordance with *Scottish Planning Policy* (Scottish Government 2010) and *PAN 2/2011 Planning And Archaeology* (Scottish Government 2011).

1.1.2 The development area is centred at approximately on Grid Ref NJ 8664 0205 (Figure 1) and comprises a total area of approximately 7.7 ha. The development forms Phase 1 of a much larger development.

1.2.3 A programme of Historic Building Survey was completed on the Oldfold Farm in October 2014 (Sproat 2014).

1.2 Site Location

1.2.1 The development area, centered on NJ 8664 0205 lies within open farmland, used as pasture for horses. The site lies c. 550m to the north of the River Dee. The development is bounded by North Deeside Road to the south, by recent housing development to the west. To the north and west lies farmland and a small scale housing development. The site sloped gently from the northwest to southeast, with a steep slope in the northern corner of the development area.

2 HISTORICAL BACKGROUND

2.1 The Royal Commission on Ancient and Historical Monuments of Scotland lists a number of monuments showing the immediate landscape around the development is rich in prehistoric remains. These finds include a cist and urn discovered during quarrying in the 19th century at Milltimber Station (NMRS no: NJ80SE 11); a barbed and tanged flint arrowhead, along with other flints (NMRS no: NJ80SE 53); a cairnfield at Hillhead road (NMRS no: NJ80SE 199) and a small area of prehistoric ard marks found during an archaeological evaluation at Milltimber Farm (NMRS no: NJ80SE 212). Medieval to post-medieval remains are limited to an area of rig and furrow (NMRS no: NJ80SE 184).

2.2 The development area in the 18th century was open agricultural land, as can be seen in Roy's map of 1747 – 55 (Figure 2). This continues into the early 19th century, as the site is shown again as open land in Thomson's 1826 map. However, by the mid-19th century, the First Edition Ordnance Survey map of 1869 first identifies Oldfold Farm, dating it roughly between 1830s – 1860s (Figure 3). It features a range of separate farm buildings included a three-side range of barns around a courtyard to the west, an L-shaped barn to the north and a linear barn to the south. To the south-west is a small farmhouse with porch to the north-west side. There are no other buildings or features within the development area apart from a small dam to the north of the farm.

2.3 By the turn of the 20th century there have been changes to the farm which have seen the demolition of all the barns apart from the three-side courtyard, as can be seen by the 1902 and 1900 Ordnance Survey map. The barns have also been slightly extended to the north side of the north-east wing. The farmhouse looks unchanged. However, there has been a large development to the south of the development area with the construction of the Hydrophatic Establishment, which was later to become the Tor-na-Dee Hospital.



Plate 1: Extract from Roy's map, ca. 1747 - 55

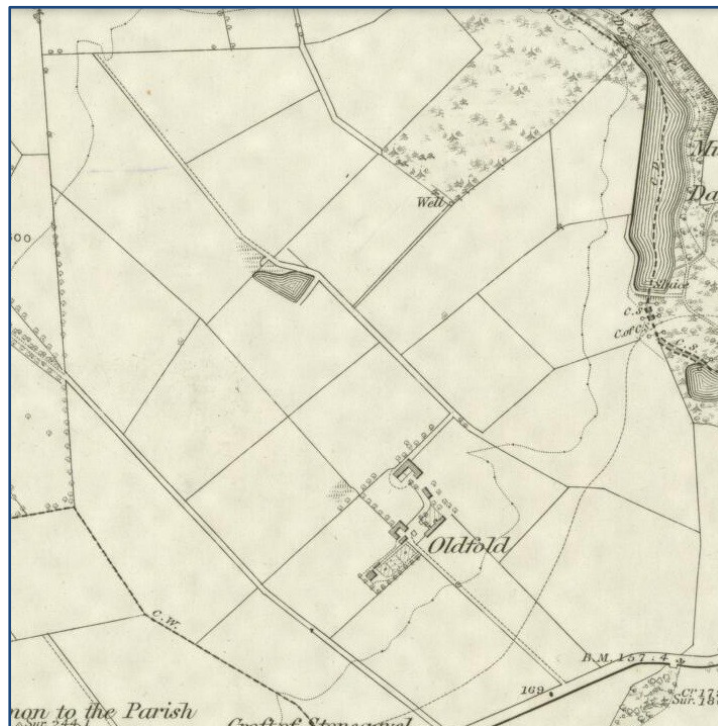


Plate 2: Extract from Ordnance Survey map, 1869

3 OBJECTIVES

3.1 The objectives of the archaeological works were:

- to determine and assess the character, extent, condition, quality, date and significance of any buried archaeological remains within the proposed development area;
- to advise and implement an appropriate form of mitigation, such as excavation, post-excavation analyses and publication, given the infeasibility of preserving the archaeological material in situ, should significant archaeological remains be encountered.

4 METHODOLOGY

4.1 The *Written Scheme of Investigation* proposed the excavation of trenches equating to a 7% sample of the development area thus requiring the excavation of trenching up to 3,250 linear metres (AOC Archaeology 2014). A further 3% contingency was available should the initial 7% evaluation uncover significant archaeological remains.

4.2 The phase 1 development area comprised a total of 7.7 ha in total, however the area available for trenching was reduced due to a steep slope in the northern corner of the development area; the presence of buildings and a car park to the northwest and recorded and unrecorded live services. This meant that the actual area available for archaeological evaluation was 4.9 ha in total area. A 7% sample (1323 m²) of this area was subject to machine excavation to uncover the nature and extent of any archaeological remains which may be present on the site.

4.3 The evaluation consisted of 20 trenches being excavated by a 24 tonne 360 machine equipped with a 2.6m wide flat bladed ditching bucket operating under the constant supervision of an experienced field archaeologist. Machine excavation was conducted in shallow units/spits through topsoil/overburden to the upper surface of the underlying geological deposits. The evaluation trial trenching was undertaken according to AOC Archaeology Group's standard operating procedures as detailed with the *Written Scheme of Investigation* (AOC 2014). Each trench was recorded using AOC *pro forma* trench record sheets and any potential features investigated further to assess their character and date.

4.4 The trenches were placed to ensure comprehensive coverage of the development area and to investigate areas of potential better survival of archaeological deposits.

5 RESULTS

5.1 The various data gathered from the evaluation and excavations are presented as a series of appendices:

Appendix 1: Evaluation trench descriptions;

Appendix 2: Photographic Register;

Appendix 3: reproduces the '*Discovery and Excavation in Scotland*' entry

5.2 Figure 2 identifies the position and orientations of all excavated trenches. The works were conducted between 12th and 16th January 2015. The weather conditions during the evaluation were favourable. Overall archaeological visibility was good.

- 5.3 The evaluation comprised 20 trenches set on a variety of alignments with a total area of 4,220 m² representing more than the 7% sample required of the 4.9 ha area available for archaeological evaluation (Figure 2). The evaluation revealed a generally thin topsoil of dark brown humic sands and gravels with roots, some larger rocks and occasional pieces of modern ceramics and glass., typically around 0.35m thick. The topsoil overlay a pale grey orange sands and gravels with occasional large boulders glacial till.



Plate 3: Trench 2 post-excitation, from south.

6 CONCLUSIONS AND RECOMMENDATIONS

- 6.1 No significant archaeological features or finds were observed during the evaluation. This suggests that the development area is archaeologically sterile.
- 6.2 No further archaeological works are considered necessary. The recommendation will require confirmation by Mr Bruce Mann on behalf of Aberdeen City Council Archaeology Service.

7 REFERENCES

7.1 Bibliographic References

AOC Archaeology 2014 *Oldford Farm, North Deeside Road, Milltimber, Aberdeen. Historic Building Recording & Archaeological Evaluation: Written Scheme of Investigation*. Unpublished AOC Project Design

AOC Archaeology 2014 *Oldford Farm, North Deeside Road, Milltimber, Aberdeen. Historic Building Recording Report*. Unpublished AOC Project Design

Scottish Government 2010 Scottish Planning Policy.

Scottish Government 2010 PAN 2/2011 Planning & Archaeology.

7.2 Cartographic References

Roy c. 1747-55 Military Map of Scotland

Ordnance Survey 1869 Aberdeen sheet LXXXV.8 (Peterculter)

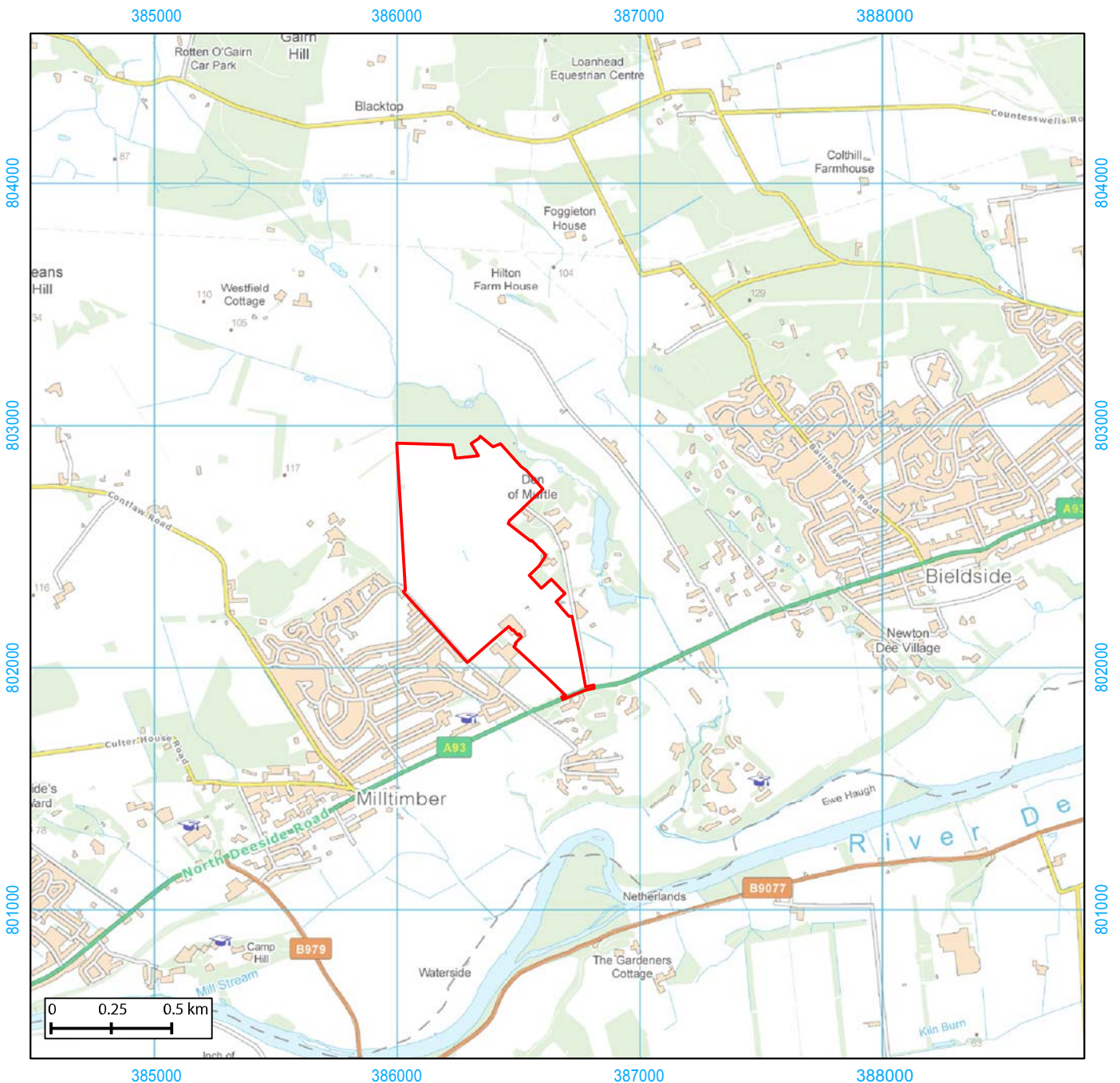
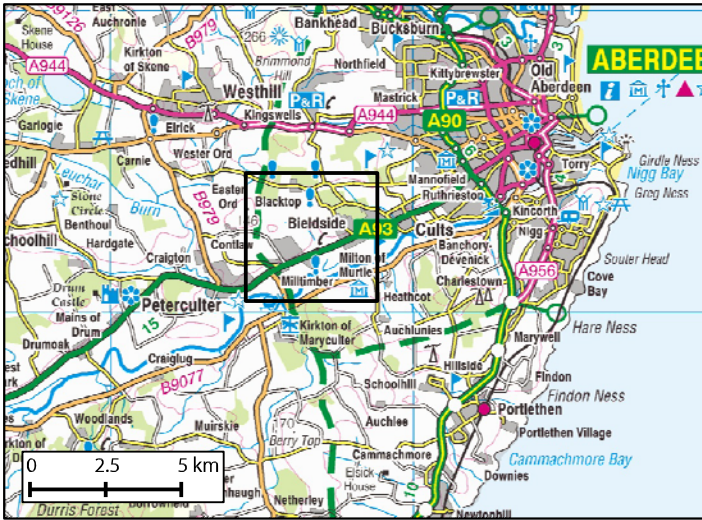


Figure 1: Site location

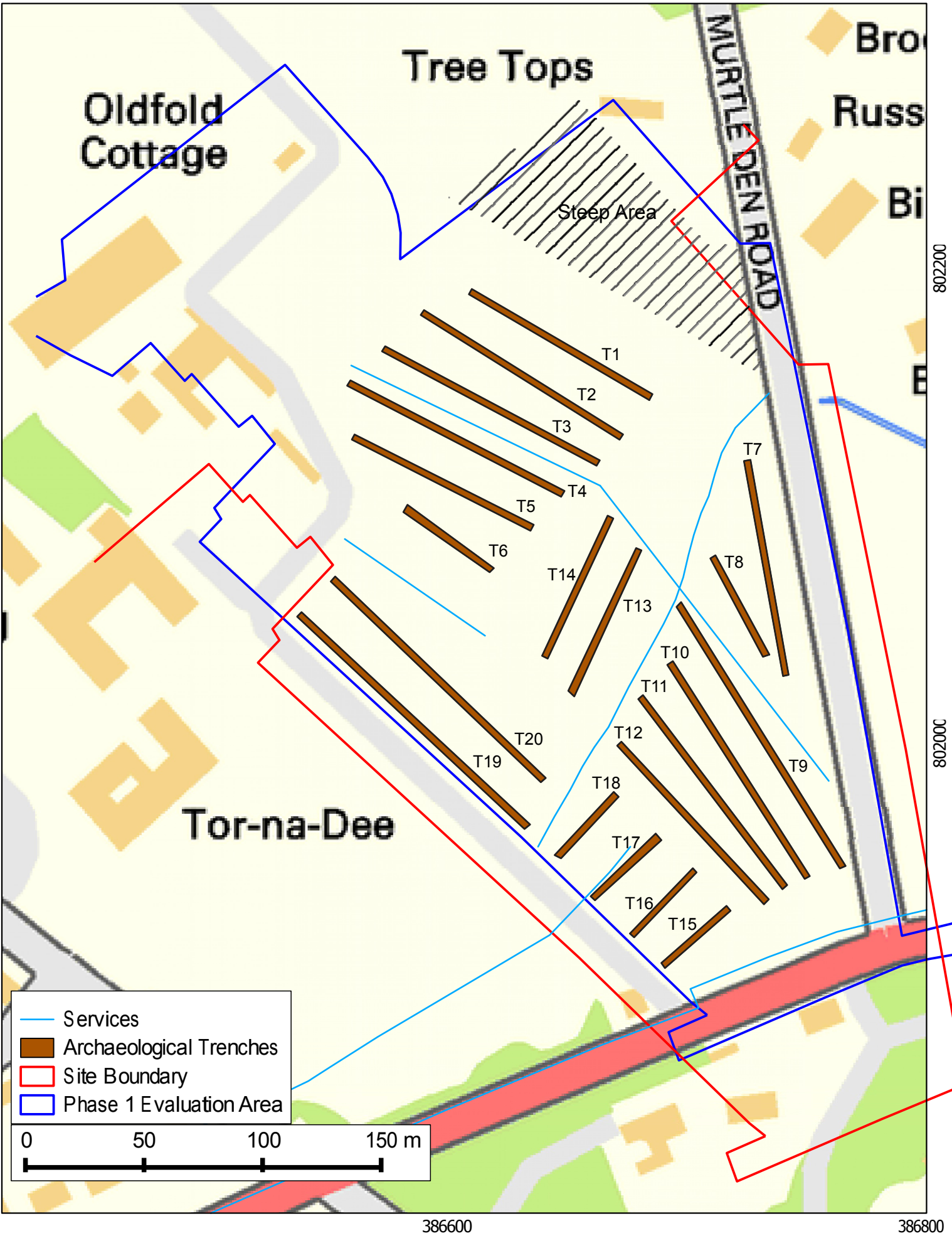


Figure 2: Location of Archaeological Evaluation Trenches

Oldfold Farm, Aberdeen: Archaeological Evaluation Data Structure Report

Section 2: Appendices

APPENDIX 1: EVALUATION TRENCH DESCRIPTIONS

Trench 1

<i>Dimensions</i>	88m by 2.6m
<i>Orientation</i>	N-S
<i>Depth of Excavation</i>	0.35m
<i>Significant Features</i>	None
<i>Non-Significant features</i>	None
<i>Soil make-up</i>	Topsoil of dark brown humic sands and gravels with roots, some larger rocks and occasional pieces of modern ceramics and glass.
<i>Natural</i>	Pale grey orange sands and gravels with occasional large boulders. Glacial till
<i>Finds</i>	None

Trench 2

<i>Dimensions</i>	99m by 2.6m
<i>Orientation</i>	N-S
<i>Depth of Excavation</i>	0.40m
<i>Significant Features</i>	None
<i>Non-Significant features</i>	None
<i>Soil make-up</i>	Topsoil of dark brown humic sands and gravels with roots, some larger rocks and occasional pieces of modern ceramics and glass.
<i>Natural</i>	Pale grey orange sands and gravels with occasional large boulders. Glacial till
<i>Finds</i>	None

Trench 3

<i>Dimensions</i>	102m by 2.6m
<i>Orientation</i>	N-S
<i>Depth of Excavation</i>	0.35m
<i>Significant Features</i>	None
<i>Non-Significant features</i>	None
<i>Soil make-up</i>	Topsoil of dark brown humic sands and gravels with roots, some larger rocks and occasional pieces of modern ceramics and glass.
<i>Natural</i>	Pale grey orange sands and gravels with occasional large boulders. Glacial till
<i>Finds</i>	None

Trench 4

<i>Dimensions</i>	101m by 2.6m
<i>Orientation</i>	N-S
<i>Depth of Excavation</i>	0.35m
<i>Significant Features</i>	None
<i>Non-Significant features</i>	None
<i>Soil make-up</i>	Topsoil of dark brown humic sands and gravels with roots, some larger rocks and occasional pieces of modern ceramics and glass.
<i>Natural</i>	Pale grey orange sands and gravels with occasional large boulders. Glacial till
<i>Finds</i>	None

Trench 5

<i>Dimensions</i>	88m by 2.6m
<i>Orientation</i>	N-S
<i>Depth of Excavation</i>	0.30m
<i>Significant Features</i>	None
<i>Non-Significant features</i>	None
<i>Soil make-up</i>	Topsoil of dark brown humic sands and gravels with roots, some larger rocks and occasional pieces of modern ceramics and glass.
<i>Natural</i>	Pale grey orange sands and gravels with occasional large boulders. Glacial till
<i>Finds</i>	None

Trench 6

<i>Dimensions</i>	46m by 2.6m
<i>Orientation</i>	N-S
<i>Depth of Excavation</i>	0.40m
<i>Significant Features</i>	None
<i>Non-Significant features</i>	None
<i>Soil make-up</i>	Topsoil of dark brown humic sands and gravels with roots, some larger rocks and occasional pieces of modern ceramics and glass.
<i>Natural</i>	Pale grey orange sands and gravels with occasional large boulders. Glacial till
<i>Finds</i>	None

Trench 7

<i>Dimensions</i>	92m by 2.6m
<i>Orientation</i>	NW-SE
<i>Depth of Excavation</i>	0.40m
<i>Significant Features</i>	None
<i>Non-Significant features</i>	None
<i>Soil make-up</i>	Topsoil of dark brown humic sands and gravels with roots, some larger rocks and occasional pieces of modern ceramics and glass.
<i>Natural</i>	Pale grey orange sands and gravels with occasional large boulders. Glacial till
<i>Finds</i>	None

Trench 8

<i>Dimensions</i>	47m by 2.6m
<i>Orientation</i>	N-S
<i>Depth of Excavation</i>	0.35m
<i>Significant Features</i>	None
<i>Non-Significant features</i>	None
<i>Soil make-up</i>	Topsoil of dark brown humic sands and gravels with roots, some larger rocks and occasional pieces of modern ceramics and glass.
<i>Natural</i>	Pale grey orange sands and gravels with occasional large boulders. Glacial till
<i>Finds</i>	None

Trench 9

<i>Dimensions</i>	130m by 2.6m
<i>Orientation</i>	N-S
<i>Depth of Excavation</i>	0.40m
<i>Significant Features</i>	None
<i>Non-Significant features</i>	None
<i>Soil make-up</i>	Topsoil of dark brown humic sands and gravels with roots, some larger rocks and occasional pieces of modern ceramics and glass.
<i>Natural</i>	Pale grey orange sands and gravels with occasional large boulders. Glacial till
<i>Finds</i>	None

Trench 10

<i>Dimensions</i>	107m by 2.6m
<i>Orientation</i>	N-S
<i>Depth of Excavation</i>	0.35m
<i>Significant Features</i>	None
<i>Non-Significant features</i>	None
<i>Soil make-up</i>	Topsoil of dark brown humic sands and gravels with roots, some larger rocks and occasional pieces of modern ceramics and glass.
<i>Natural</i>	Pale grey orange sands and gravels with occasional large boulders. Glacial till
<i>Finds</i>	None

Trench 11

<i>Dimensions</i>	100m by 2.6m
<i>Orientation</i>	N-S
<i>Depth of Excavation</i>	0.35m
<i>Significant Features</i>	None
<i>Non-Significant features</i>	None
<i>Soil make-up</i>	Topsoil of dark brown humic sands and gravels with roots, some larger rocks and occasional pieces of modern ceramics and glass.
<i>Natural</i>	Pale grey orange sands and gravels with occasional large boulders. Glacial till
<i>Finds</i>	None

Trench 12

<i>Dimensions</i>	91m by 2.6m
<i>Orientation</i>	N-S
<i>Depth of Excavation</i>	0.40m
<i>Significant Features</i>	None
<i>Non-Significant features</i>	None
<i>Soil make-up</i>	Topsoil of dark brown humic sands and gravels with roots, some larger rocks and occasional pieces of modern ceramics and glass.
<i>Natural</i>	Pale grey orange sands and gravels with occasional large boulders. Glacial till
<i>Finds</i>	None

Trench 13

<i>Dimensions</i>	66m by 2.6m
<i>Orientation</i>	E-W
<i>Depth of Excavation</i>	0.35m
<i>Significant Features</i>	None
<i>Non-Significant features</i>	None
<i>Soil make-up</i>	Topsoil of dark brown humic sands and gravels with roots, some larger rocks and occasional pieces of modern ceramics and glass.
<i>Natural</i>	Pale grey orange sands and gravels with occasional large boulders. Glacial till
<i>Finds</i>	None

Trench 14

<i>Dimensions</i>	65m by 2.6m
<i>Orientation</i>	E-W
<i>Depth of Excavation</i>	0.40m
<i>Significant Features</i>	None
<i>Non-Significant features</i>	None
<i>Soil make-up</i>	Topsoil of dark brown humic sands and gravels with roots, some larger rocks and occasional pieces of modern ceramics and glass.
<i>Natural</i>	Pale grey orange sands and gravels with occasional large boulders. Glacial till
<i>Finds</i>	None

Trench 15

<i>Dimensions</i>	35m by 2.6m
<i>Orientation</i>	E-W
<i>Depth of Excavation</i>	0.40m
<i>Significant Features</i>	None
<i>Non-Significant features</i>	None
<i>Soil make-up</i>	Topsoil of dark brown humic sands and gravels with roots, some larger rocks and occasional pieces of modern ceramics and glass.
<i>Natural</i>	Pale grey orange sands and gravels with occasional large boulders. Glacial till
<i>Finds</i>	None

Trench 16

<i>Dimensions</i>	37m by 2.6m
<i>Orientation</i>	E-W
<i>Depth of Excavation</i>	0.40m
<i>Significant Features</i>	None
<i>Non-Significant features</i>	None
<i>Soil make-up</i>	Topsoil of dark brown humic sands and gravels with roots, some larger rocks and occasional pieces of modern ceramics and glass.
<i>Natural</i>	Pale grey orange sands and gravels with occasional large boulders. Glacial till
<i>Finds</i>	None

Trench 17

<i>Dimensions</i>	38m by 2.6m
<i>Orientation</i>	E-W
<i>Depth of Excavation</i>	0.40m
<i>Significant Features</i>	None
<i>Non-Significant features</i>	None
<i>Soil make-up</i>	Topsoil of dark brown humic sands and gravels with roots, some larger rocks and occasional pieces of modern ceramics and glass.
<i>Natural</i>	Pale grey orange sands and gravels with occasional large boulders. Glacial till
<i>Finds</i>	None

Trench 18

<i>Dimensions</i>	36m by 2.6m
<i>Orientation</i>	E-W
<i>Depth of Excavation</i>	0.35m
<i>Significant Features</i>	None
<i>Non-Significant features</i>	None
<i>Soil make-up</i>	Topsoil of dark brown humic sands and gravels with roots, some larger rocks and occasional pieces of modern ceramics and glass.
<i>Natural</i>	Pale grey orange sands and gravels with occasional large boulders. Glacial till
<i>Finds</i>	None

Trench 19

<i>Dimensions</i>	131m by 2.6m
<i>Orientation</i>	N-S
<i>Depth of Excavation</i>	0.45m
<i>Significant Features</i>	None
<i>Non-Significant features</i>	None
<i>Soil make-up</i>	Topsoil of dark brown humic sands and gravels with roots, some larger rocks and occasional pieces of modern ceramics and glass.
<i>Natural</i>	Pale grey orange sands and gravels with occasional large boulders. Glacial till
<i>Finds</i>	None

Trench 20

<i>Dimensions</i>	122m by 2.6m
<i>Orientation</i>	N-S
<i>Depth of Excavation</i>	0.35m
<i>Significant Features</i>	None
<i>Non-Significant features</i>	None
<i>Soil make-up</i>	Topsoil of dark brown humic sands and gravels with roots, some larger rocks and occasional pieces of modern ceramics and glass.
<i>Natural</i>	Pale grey orange sands and gravels with occasional large boulders. Glacial till
<i>Finds</i>	None

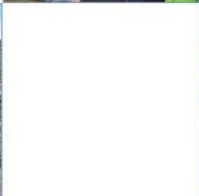
APPENDIX 2: PHOTOGRAPHIC REGISTER

Digital Photographs

Frame	Description	From
1	Trench 4 Post-excavation	S
2	Trench 3 Post-excavation	S
3	Trench 2 Post-excavation	S
4	Trench 1 Post-excavation	S
5	Trench 6 Post-excavation	S
6	Trench 5 Post-excavation	S
7	Trench 7 Post-excavation	NE
8	Trench 8 Post-excavation	NE
9	Trench 9 Post-excavation	N
10	Trench 10 Post-excavation	N
11	Trench 11 Post-excavation	N
12	Trench 12 Post-excavation	N
13	Trench 15 Post-excavation	E
14	Trench 16 Post-excavation	E
15	Trench 17 Post-excavation	E
16	Trench 18 Post-excavation	W
17	View of backfilled trenches	NE
18	View of backfilled trenches	NW
19	General view of site	SW
20	General view of site	S
21	General view of site	NW
22	View of backfilled trenches	W
23	General view of site	W
24	General view of site	NE
25	View of steep area at NE of site	SW
26	Trench 19 Post-excavation	S
27	Trench 20 Post-excavation	S
28	View of backfilled trenches	N
29	View of backfilled trenches	NW
30	View of backfilled trenches	N

APPENDIX 3: 'DISCOVERY AND EXCAVATION IN SCOTLAND' REPORT

LOCAL AUTHORITY:	Aberdeen City Council
PROJECT TITLE/SITE NAME:	Oldfold Farm, North Deeside Road, Milltimber, Aberdeen
PROJECT CODE:	22800
PARISH:	Peterculter
NAME OF CONTRIBUTOR:	Jamie Humble
NAME OF ORGANISATION:	AOC Archaeology Group
TYPE(S) OF PROJECT:	Evaluation
NMRS NO(S):	N/A
SITE/MONUMENT TYPE(S):	None
SIGNIFICANT FINDS:	None
NGR (2 letters, 6 figures)	NJ
START DATE (this season)	12 th January 2015
END DATE (this season)	15 th January 2015
PREVIOUS WORK (inc DES)	Historic Building Recording (DES 2015)
MAIN (NARRATIVE) DESCRIPTION: (May include information from other fields)	<p><i>AOC Archaeology Group undertook an archaeological evaluation on behalf of Cala Homes (North) Ltd ahead of residential development of land at Oldfold Farm, North Deeside Road, Milltimber, Aberdeen (NGR: NJ 8664 0205). The phase 1 development area encompasses four separate fields along with an area of buildings and car park still in use.</i></p> <p><i>A total of 20 evaluation trenches with an area of 4,220m² were excavated in the 4.9 ha area that was available for trenching in the phase 1 development area representing more than the 7% sample required. The evaluation revealed a simple stratigraphic sequence of thin topsoil overlying sandy clay glacial till subsoil. No significant archaeological features were identified during the evaluation.</i></p>
PROPOSED FUTURE WORK:	Further areas of evaluation trenching
CAPTION(S) FOR ILLUSTRATIONS:	N/A
SPONSOR OR FUNDING BODY:	Cala Homes (North) Ltd
ADDRESS OF MAIN CONTRIBUTOR:	AOC Archaeology Group, Edgefield Road Industrial Estate, Loanhead, Midlothian, EH20 9SY
EMAIL ADDRESS:	admin@aocarchaeology.com
ARCHIVE LOCATION	Archive to be deposited in NMRS



Q.Y Group

AOC Archaeology Group, Edgefield Industrial Estate, Edgefield Road, Loanhead EH20 9SY
tel: 0131440 3593 | fax: 0131440 3422 | e-mail: edinburgh@aocarchaeology.com

www.aocarchaeology.com