

Buccleuch Church, 33 Chapel Street, Edinburgh Historic Building Recording Report

AOC 22983

27th March 2015



ARCHAEOLOGY

HERITAGE

CONSERVATION

Buccleuch Church, 33 Chapel Street, Edinburgh

Historical Building Recording Report

On Behalf of:	Orthodox Community of St Andrew 2 Meadow Lane Edinburgh EH8 9NR
National Grid Reference (NGR):	NT 26054 72932
Planning Application No:	12/01149/FUL
AOC Project No:	22983
OASIS No:	205315
Prepared by:	Diana Sproat
Date:	27 th March 2015

This document has been prepared in accordance with AOC standard operating procedures.

Author: Diana Sproat	Date: 27th March 2015
Approved by: Martin Cook	Date: 27th March 2015
Draft/Final Report Stage: Draft	Date: 27th March 2015

Enquiries to: AOC Archaeology Group
Edgefield Industrial Estate
Edgefield Road
Loanhead
EH20 9SY

Tel. 0131 440 3593
Fax. 0131 440 3422
e-mail. admin@aocarchaeology.com

Contents

	Page
List of Figures.....	4
List of Plates.....	4
List of Appendices.....	5
<i>SUMMARY</i>	6
1 INTRODUCTION	7
1.1 Site background and location	7
1.2 Site location	7
2 OBJECTIVE	7
3 METHODOLOGY	7
4 HISTORICAL BACKGROUND	8
5 RESULTS.....	11
5.1 The Exterior	11
5.2 The Interior	12
6 DISCUSSION.....	15
6.1 The 18th century Church	15
6.2 Phasing	15
7 CONCLUSIONS & FURTHER WORKS.....	16
8 REFERENCES	16
8.1 Bibliographical references	16
8.2 Cartographic references	16
APPENDIX 1: PHOTOGRAPHIC RECORD	17
APPENDIX 2: DISCOVERY AND EXCAVATION IN SCOTLAND (DES) ENTRY	22

List of Figures

Figure 1: Site location plan
 Figure 2: Extract from Kincaid's map, 1784
 Figure 3: Extract from Ainslie's map, 1804
 Figure 4: Extract from Ordnance Survey map, 1852
 Figure 5: Extract from Ordnance Survey map, 1877
 Figure 6: Extract from Ordnance Survey map, 1894

Figure 7: Extract from Bartholomew's map, 1907
 Figure 8: Extract from Post Office map, 1911
 Figure 9: Extract from Ordnance Survey map, 1949
 Figure 10: Buccleuch Church, ground floor plan
 Figure 11: Buccleuch Church, first floor plan

List of Plates

Plate 1: General view from the east
 Plate 2: North-east elevation, detail of porch from the north-east
 Plate 3: North-east elevation, detail of datestone on porch, from the north-east
 Plate 4: North-east elevation, detail of column head on the north-west side, from the east
 Plate 5: North-east elevation, detail of column head on the south-east side, from the north
 Plate 6: North-east elevation, detail of door hinge from the north-east
 Plate 7: North-east elevation, detail of door fittings from the north-east
 Plate 8: South-east elevation, general view from the east
 Plate 9: South-east elevation, general view from the south
 Plate 10: South-east elevation, detail of buttress to the north-east end, from the south-east
 Plate 11: South-east elevation, detail of the blocked opening to the north-east side from the south-east
 Plate 12: South-east elevation, detail of the blocked opening to the south-west side from the south-east
 Plate 13: North-west elevation, general view from the NNE
 Plate 14: North-west elevation, detail of north-west transept, from the NNE
 Plate 15: North-west elevation, detail of the ground floor of the north-west transept from the north
 Plate 16: North-west transept, north-east elevation, detail of the large window and blocking beneath, from the north-east
 Plate 17: North-west elevation, general view of the openings to the Boiler House on the north-east side, from the north-west
 Plate 18: Detail of the north tower from the east
 Plate 19: South-west elevation, general view from the south
 Plate 20: South-west elevation, detail of the window on the south-east side from the south-west
 Plate 21: South-west elevation, detail of the blocked first floor window on the south-east side, from the west
 Plate 22: South-west elevation, detail of the inserted toilet window on the south-east side, from the south-west
 Plate 23: South-west elevation, detail of the central window, showing blocking beneath, from the south-west
 Plate 24: South-west elevation, detail of the main doorway to the north-west side showing the original blocked entrance from the west
 Plate 25: South-west elevation, detail of first floor central window from the south-west
 Plate 26: Room 0/1, general view from the south
 Plate 27: Room 0/1, general view from the east
 Plate 28: Room 0/1, general view of the north-east wall from the south-west
 Plate 29: Room 0/1, detail of floor vent
 Plate 30: Room 0/1, detail of column from the north
 Plate 31: Room 0/1, detail of column head from the north
 Plate 32: Room 0/1, detail of column in front of the north-west transept from the east
 Plate 33: Room 0/1, detail of column head in front of the north-west transept from the east

Plate 34: Room 0/1, general view of the organ in the south-east wall from the west
 Plate 35: Room 0/1, general view of the organ in the south-east wall from the north
 Plate 36: Room 0/1, detail of the organ steps to the south-west side from the north-west
 Plate 37: Room 0/1, detail of the organ from the north-west
 Plate 38: Room 0/1, detail of the organ from the north-west
 Plate 39: Room 0/1, detail of the organ fitting from the west
 Plate 40: Room 0/1, detail of the organ from the north-west
 Plate 41: Room 0/1, detail of the organ fitting from the north
 Plate 42: Room 0/1, detail of the Henry Willis & Sons Ltd plaque on the south-west side of the organ, from the north-west
 Plate 43: Room 0/1, detail of the window to the north-east side of the south-east wall from the north-west
 Plate 44: Room 0/1, detail of the window on the south-west side of the south-east wall from the north-west
 Plate 45: Room 0/1, detail of the door in the north-west wall of the north-west transept, from the east
 Plate 46: Room 0/1, detail of the window on the south-west wall of the north-west transept, from the north-east
 Plate 47: Room 0/1, detail of the window on the north-east wall of the north-west transept, from the south-west
 Plate 48: Room 0/1, detail of the memorial plaque on the north-east side of the north-west wall of the nave, from the south-east
 Plate 49: Room 0/2, detail of the main entrance from the west
 Plate 50: Room 0/2, detail of door fittings to the porch in the north-west wall, from the south-west
 Plate 51: Room 0/2, detail of small arched window to the north-west side of the porch, from the south-east
 Plate 52: Room 0/2, general view showing stairs from the south-east
 Plate 53: Room 0/2, detail of window in the north-east wall to the north-west side of the porch, from the west
 Plate 54: Room 0/3, general view of south-west wall and glazed panelling from the north
 Plate 55: Room 0/3, detail of window in the north-east wall from the west
 Plate 56: Room 0/4, general view of the stairwell from the south-east
 Plate 57: Room 0/4, general view from the north-west
 Plate 58: Room 0/4, detail of partition glazing from the south-west
 Plate 59: Room 0/4, detail of latch on partition glazing from the west
 Plate 60: Room 0/4, detail of main doorway from the east
 Plate 61: Room 0/5, general view of partition glazing in the north-east wall from the south
 Plate 62: Room 0/5, detail of blocked opening in the south-west wall from the north
 Plate 63: Room 1/1, general view from the south-west
 Plate 64: Room 1/1, general view from the north-west
 Plate 65: Room 1/1, detail of boss above organ bay from the north-west
 Plate 66: Room 1/1, detail of stencilling in the organ bay from the north-west

Plate 67: Room 1/1, detail of window in the organ bay from the north-west
Plate 68: Room 1/1, detail of timberwork to the top of the organ from the north
Plate 69: Room 1/1, detail of the timberwork to the top of the organ from the north
Plate 70: Room 1/1, detail of the top of the timberwork of the piping of the organ from the north
Plate 71: Room 1/1, detail of the window in the south-east wall to the north-east of the organ from the south-west
Plate 72: Room 1/1, detail of the window in the south-east wall to the south-west of the organ from the south-west
Plate 73: Room 1/1, general view from the south-west
Plate 74: Room 1/1, detail of window in the north-east wall from the north-east
Plate 75: Room 1/1, general view of the north-west transept from the south-east
Plate 76: Room 1/1, general view of north-east wall of the north-west transept from the south
Plate 77: Room 1/1, general view of the south-west wall of the north-west transept from the north-east
Plate 78: Room 1/1, detail of plaque on the south-west wall of the north-west transept from the north-east
Plate 79: Room 1/1, detail of moulded timber rafter on the south-east wall from the north

Plate 80: Room 1/1, detail of moulded timber rafter on the south-east wall from the NNE
Plate 81: Room 1/1, general view of the ceiling from the west
Plate 82: Room 1/1, general view of the ceiling from the south
Plate 83: Room 1/1, detail of central the ceiling from the south-west
Plate 84: Room 1/1, general view of the ceiling from the east
Plate 85: Room 1/1, general view of the ceiling of the north-west transept from the east
Plate 86: Room 0/1, general view of screen in the north-west wall after the removal of the organ, from the south
Plate 87: Room 0/1, general view of the exposed stone rubble wall looking down from Room 1/1 after the removal of the organ, from the south
Plate 88: Room 0/1, general view of the exposed stone rubble wall after the removal of the organ, from the south
Plate 89: Room 0/1, detail of decorative plasterwork in the north-west wall after the removal of the organ, from the south
Plate 90: Room 0/1, detail of decorative plasterwork in the north-west wall after the removal of the organ, from the south
Plate 91: Room 1/1, general view of the north-west wall after the removal of the organ, from the south-east
Plate 92: General view of the ceiling of the organ bay to the north-west

List of Appendices

Appendix 1: Black And White Print and Colour Digital Photographic Register

Appendix 2: Discovery and Excavation in Scotland (DES) Entry

SUMMARY

AOC Archaeology Group was commissioned by the Orthodox Community of St Andrew to undertake an historic building survey of the redundant Buccleuch Church at 33 Chapel Street, Edinburgh, as part of a condition on the planning application to refurbish the building.

The church was originally built in the 1750s, although was refurbished in the 1860s. The original church would have had an open gallery to the first floor, although at the time of survey a false ceiling had been put in to create two separate floors. It was most recently used as a community centre.

The survey recorded the building prior to any alterations, and also after the removal of the organ against the east wall. An archaeological watching brief is also required during any ground-breaking works associated with the conversion.

1 INTRODUCTION

1.1 Site background and location

- 1.1.1 AOC Archaeology Group was commissioned by the Orthodox Community of St Andrew to undertake an historic building survey of the presently redundant Buccleuch Church at 33 Chapel Street, Edinburgh, as part of a condition on the planning application to convert the building (Planning Ref: 12/01149/FUL). The extent of the works were defined by the City of Edinburgh Council as advised by the City of Edinburgh Council Archaeology Service and consisted of a written, photographic and drawn record of the church prior to any on-site renovation works. Further works are required, to fully purify the planning condition namely an archaeological watching brief on ground-breaking works.
- 1.1.2 The church is a C Listed building and is located in the South Side Conservation Area. It also lies just to the south of the World Heritage Site of the Old and New Towns of Edinburgh.

1.2 Site location

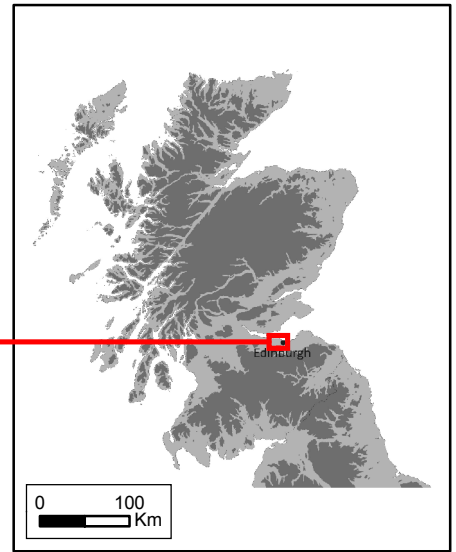
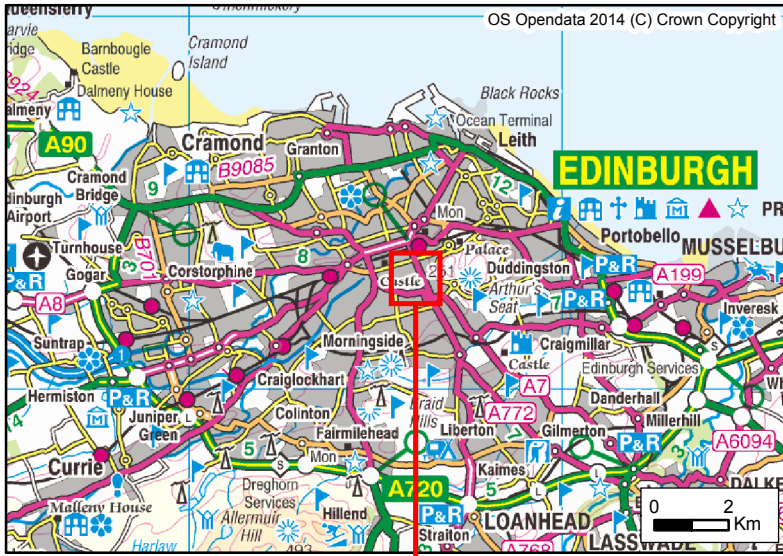
- 1.2.1 Buccleuch Church is located on the west side of Chapel Street and is centred on NGR: NT 26054 72932 (Figure 1). It stands in its own plot of land, which is the property of the City of Edinburgh Council, with the exception of a small patch of rectangular land to the immediate north-west of the church. There are multiple grave slabs around the stone rubble boundary walls of the site, and also several mausoleums.

2 OBJECTIVE

- 2.1 The objective of this survey work was to undertake a 'preservation by record' of the building through written, drawn and photographic record, preceded by an element of archive research and map regression to identify a general history and development of the building. A secondary objective was to ensure an adequate record of the organ was made prior to its removal.

3 METHODOLOGY

- 3.1 A photographic record was made of the exterior and interior of the church in black and white print and colour digital using a 35mm SLR and digital SLR respectively. A 1m ranging pole was used in all shots where access and health and safety allowed. A running register of all photographs taken was made on site and can be found in Appendix 1.
- 3.2 A written record of the building was made using AOC's *pro forma* recording sheets which made comment on condition, construction, materials, architectural features and any evidence for phasing and function.
- 3.3 A drawn record was also required of the site, which took the form of annotated architects' floor plans.



326000

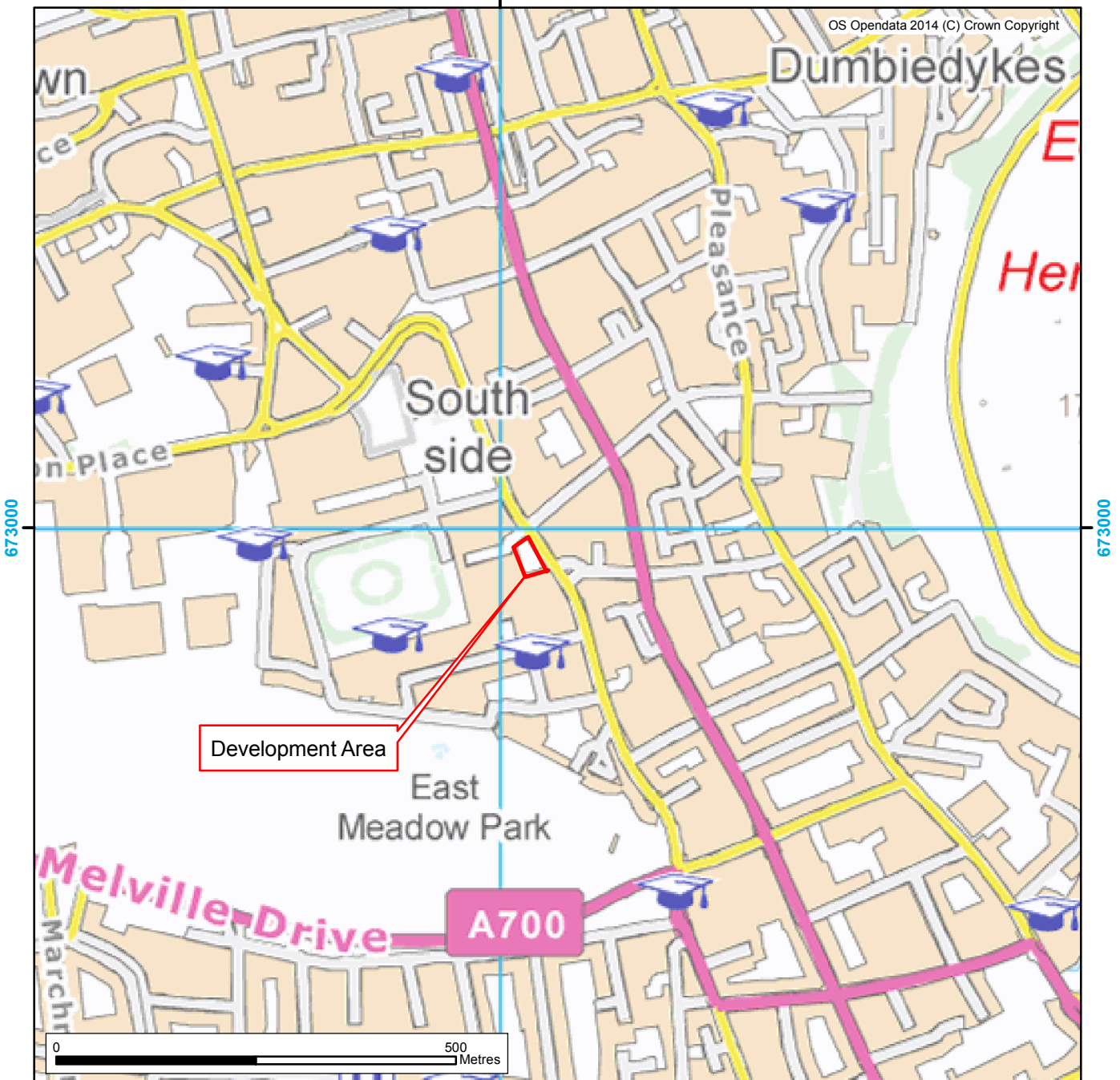


Figure 1: Site location plan

4 HISTORICAL BACKGROUND

4.1 Buccleuch Parish Church was originally called St Cuthbert's Chapel of Ease and was constructed in the 18th century, opening for worship in 1756. It is recorded as such on the late 18th and early 19th century maps such as Kincaid's 1784 map and Ainslie's 1804 map (Figures 2 & 3). The ground surrounding the chapel was granted permission for internments, and was in constant use until about 1820. The First Edition 1852 Ordnance Survey map shows the church in detail (Figure 4), and in 1866 the chapel was re-constructed as the Buccleuch Church by David McGibbon with a new imposing frontage with large stained glass window, as well as a north tower. These changes can be seen on the later 1877 and 1894 Ordnance Survey maps (Figures 5 & 6).



Figure 2: Extract from Kincaid's map, 1785

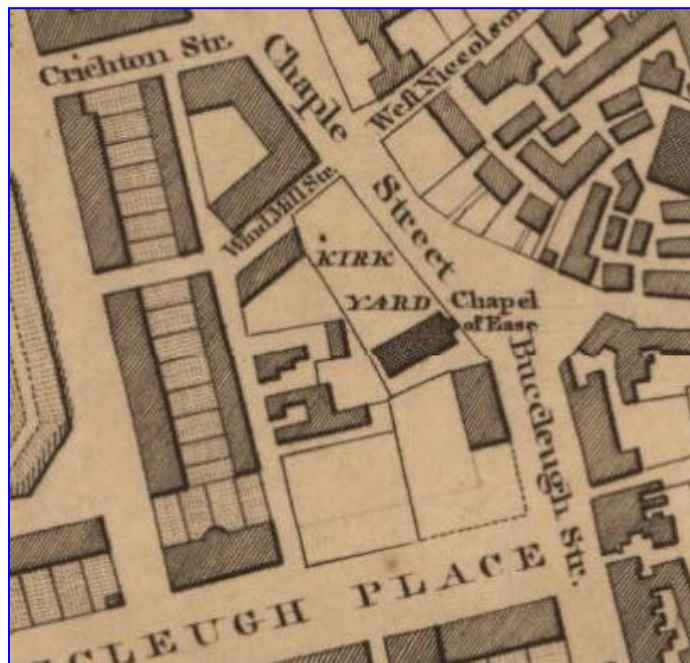


Figure 3: Extract from Ainslie's map, 1804

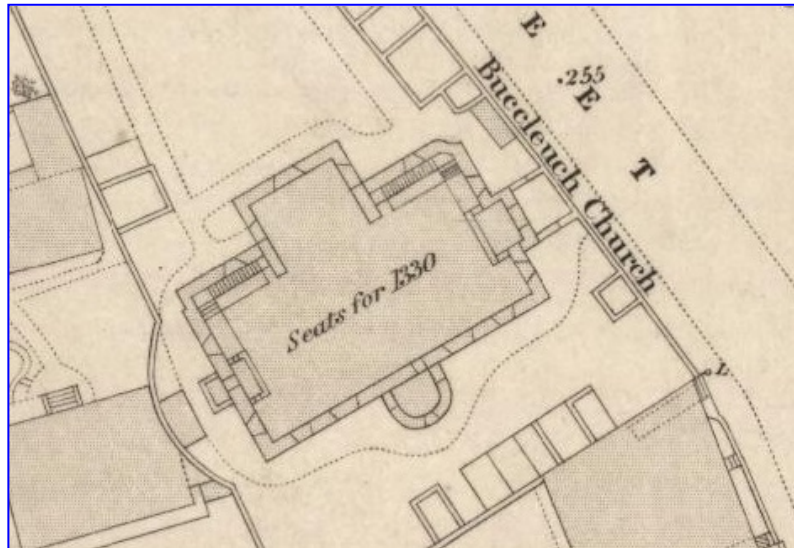


Figure 4: Extract from Ordnance Survey map, 1852

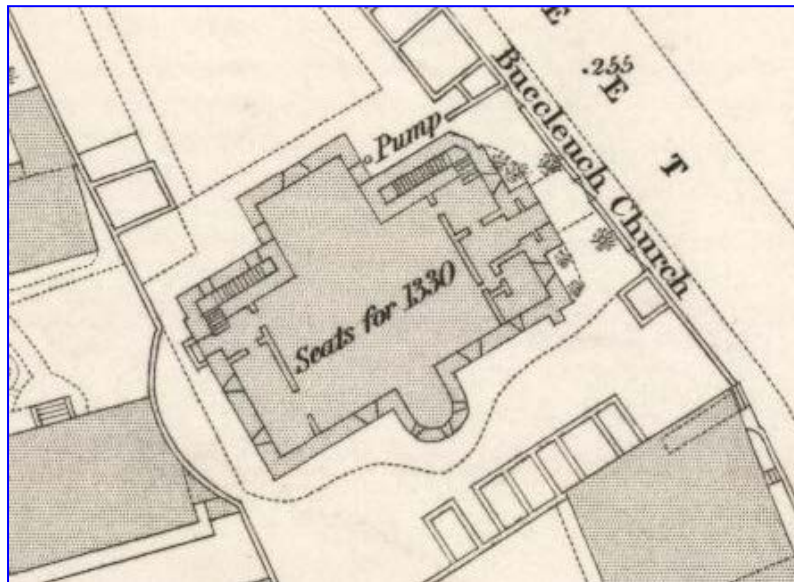


Figure 5: Extract from Ordnance Survey map, 1877

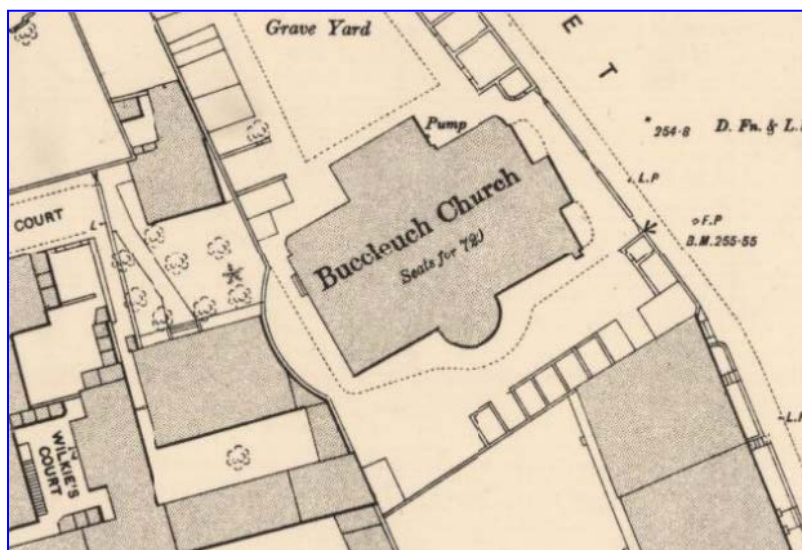


Figure 6: Extract from Ordnance Survey, 1894

- 4.2 Between 1907 – 1911, the Kirk Session made the decision to build an additional hall to the north-west of the church, which necessitated the removal of the grave slabs of the cemetery (RIAS ud). This is why many of the grave slabs adorn the outer boundary wall of the site. The Hall does not appear on Bartholomew's plan of 1907, and is first depicted on the Post Office plan of 1911 (Figures 7 & 8). The Hall was later used as roller skating rink, but this was short-lived as there was outcry of the local people 'skating over the graves of the dead' (*ibid*). It was still in place in the late 1940s, as we can see on the 1949 Ordnance Survey map (Figure 9). It has, of course, now been demolished.
- 4.3 In 1969, the Buccleuch Congregation amalgamated with the Kirk O' Field, after which time there were some more modifications, including the insertion of the floor to the first floor level (Roger Taylor, pers comm). These works – including later modifications to the ground floor spaces - were carried out by the University of Edinburgh to use the building as a furniture store. It later became used by the Council as a community centre.



Figure 7: Extract from Bartholomew's map, 1907

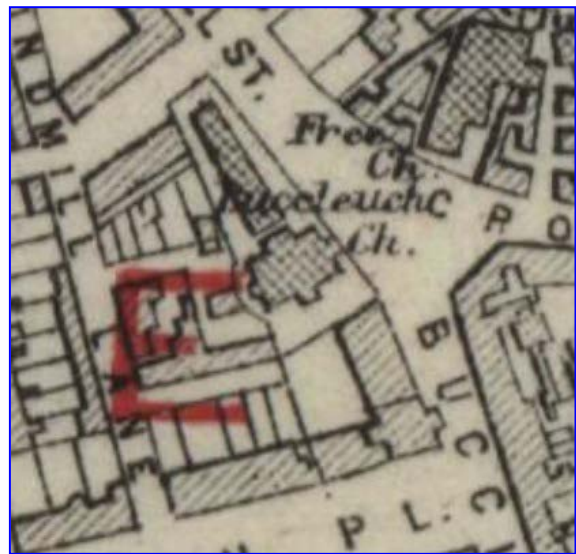


Figure 8: Extract from Post Office map, 1911



Figure 9: Extract from Ordnance Survey map, 1949

5 RESULTS

5.1 The Exterior

- 5.1.1 Buccleuch Church is a 3 x 3 bay stone rubble church with a pitched slate roof, angled north tower and north-west transept. Much of it dates from the original 18th century construction. However, there were some later additions – and blocking of original openings – in the 1860s refurbishment phase. The front of the church to the north-east facing Chapel Street is dominated by a large gable front (Plate 1). At first floor level there is a central three-part pointed arch window with plain rose above, flanked by two smaller windows with quatrefoils all with drip moulds. The gable is topped with a small clock face, also with drip mould. The ground floor windows flanking the porch, which were boarded at the time of survey. However, the interior exposed these to be two-part pointed arched windows with oculus. The porch itself is part of the later 1860s renovations, as depicted on a datestone at the top of its gable (Plates 2 & 3). It is flanked by two engaged columns, each with a different column head (Plates 4 & 5). The door itself may be original to the 1860s, with elaborate strap hinges and some original door fittings, although these have also been replaced by modern ones (Plates 6 & 7).
- 5.1.2 The south-east elevation is set in front of a patch of grassland with a dominant rounded bay (the organ bay) in the centre (Plates 8 & 9). It is constructed of stone rubble which has been heavily re-mortared with cement, which has led to the severe weathering of much of the stonework. The buttress to the north-west side is part of the 1860s refurbishments, constructed in a neater style with chisel-dressed quoins (Plate 10). To the north-east and south-west sides of this elevation are two stone-blocked doorways (Plates 11 & 12). These are clearly the original 18th century openings to this side which were blocked as part of the refurbishments. To either side of the rounded organ bay are two windows, both boarded at the time of survey, although the interior exposes them as simple rectangular windows. To the north-west side against the buttress, is a small tiny window which looks to be inserted (see Plate 10). It does not appear in the 1850s or 1877 map, so must be part of even later refurbishments. The first floor windows are also boarded, the interior exposed as rectangular windows, smaller in height than those to the ground floor.
- 5.1.3 The opposite north-west wall has a large north-west transept in the centre, a tall gable-fronted façade with raised skews and finial and chamfered ashlar quoins (Plates 13 & 14). It houses a large boarded-up rectangular doorway, with rectangular boarded-over light above, and a pointed arched window above. Grave slabs have also been embedded to the wall (Plate 15). This part of the building appears on both the 1852 and 1877 maps and therefore was part of the original build. To the north-east facing side of this aspect is another area of blocking (Plate 16). Boarded at the time of survey, there is a tall window which spans the ground and first floor, with an area of stone blocking beneath. There is a similar opening to the south-west.
- 5.1.4 Flanking the central gable here are the openings relating to the original church, with a boiler room to the north-east side located beneath the interior stairwell (Plate 17). There is a small boarded-up doorway to the south-west side with a small low-set window adjacent. There is also another blocked window to the north-east side, which has been converted into a vent outlet. In the north corner of the building is a tall bell tower, built as part of the 1860s refurbishments, rising above the height of the pitched slate roof of the main building, with a conical slate roof with lead flashing with small hooded windows (Plate 18).
- 5.1.5 The south-west elevation is set much closer to the curved rear boundary wall of the site (Plate 19). Moving from the south-east, there is a simple rectangular window to the ground floor and a smaller stone-blocked window above it (Plates 20 & 21). As the openings were not boarded-up on this side, we can see that the original build had comb-dressed raised edging to the surrounds. Adjacent to this is a smaller window to the toilet cubicle to the interior behind it. The stonework is much newer with different detail to the surround, so is undoubtedly a later insertion (Plate 22). It does not appear on the 1877 plan, so must have been added after the 1860s refurbishments. There is also then another window, although below this is an area of blocking, which suggests that this may have originally been a doorway, especially as it is placed centrally to the elevation (Plate 23). It does appear in the 1850s plan, although is gone by the 1877 plan. It may have therefore been a doorway that was blocked in the 1860s and then perhaps reopened, but as a window. To the north-west of the elevation is a large double doorway, identical in style to that on the north-west

elevation. However, it is clear that there was a previous larger doorway off-set to the south-west of this, much taller, with a relieving arch over (Plate 24). There is also another blocked window above this to the first floor, identical to that on the opposite side of the elevation. There is a tall three-part pointed arch window set high in the centre of the gable (Plate 25).

5.2 The Interior

5.2.1 Introduction

The interior of the church has been modified from its original function as a church largely by the insertion of the false ceiling; originally there would be a void to the first floor and galleries looking down to the pulpit below.

The following will first look at the ground floor and then the first, and finally will look at the exposed area after the removal of the organ on the ground floor. It should be read in conjunction with the ground and first floor plans of the church in Figures 10 & 11. Each space within the interior has been divided by floor number (0 for ground floor, 1 for first floor) and allocated a unique number. The room numbers can be cross-referenced to the plans.

5.2.2 Ground Floor

Room 0/1

The ground floor is dominated by the large open hall, Room 0/1, which is a T-shaped room with timber floorboards and rendered walls and a false ceiling (Plates 26 & 27). Today, it is entered from the north-east through porch and lobby Room 0/2. Here, the division between the two is largely glazed, with vertically timber panelling below and leaded glazed panelling above. The main entrance has an ogee-headed arch, and a smaller doorway – now no longer in use – further to the north-west side (Plate 28). The south-east end of the room here has been sub-divided by timber boarding, creating a small space, blocking the view from the glazed panelling to the office, Room 0/3. The remainder of the rooms share the vertical timber panelling with rendered walls above to the modern false ceiling and plain moulded coving. There were various iron vents to the floorboards forming the main underfloor heating (Plate 29).

The former gallery was supported by a range of columns with plain heads, with the false ceiling further supported by encased columns (Plates 30 & 31). The earlier columns (although possibly dating to the 1860s refurbishment phase) were all identical with the exception of a single column in the centre of the space between the nave and north-west transept (Plate 32). This was a much more elaborately carved column head with acanthus leaves (Plate 33).

The south-west wall mimicked the north-west wall in that it formed a glazed section of wall above the panelling which, at the time of survey, has been boarded over (see Plate 27).

The south-east wall contained the organ to the centre, the structure of which ran up to the first floor level (Plates 34 - 36). Thanks to the building being kept wind and watertight, the actual timber structure of the organ was sound, although the organ itself and its fixtures and fittings were in quite a poor state (Plates 37 - 41). There is a plaque on the organ which identifies that 'Henry Willis & Sons Ltd' care for the organ, although it is not known whether they were the original suppliers (Plate 42). They are one of the oldest organ buildings in the country, with their work dating back to the 19th century, so it is possible that they were the original suppliers, although this would need to be confirmed. To either side of the organ (which is set back into the rounded bay) are two deeply splayed windows (Plates 43 & 44). Both boarded from exterior and cut off by the false ceiling, they contain elaborate stained glasswork. There is no sign of the two blocked 18th century openings to the north-east and south-west of each window respectively, the wall having been rendered over.

The north-west transept has a centrally-placed double door, encased in its own small porch (Plate 44). To the north-east and south-west sides, which are identical, there is a tall window with diamond leading (Plates 46 & 47). There is also a small doorway leading to a small storage space beneath the stairwells, which are located behind these walls. The north-west wall of the main nave here is plain, although to the north-east side there is a small plaque set high in the wall, which commemorates Rev John Campbell, who died in 1901 (Plate 48).

Room 0/2

This small lobby and porch are the present entrance to the building to the north-east and consists of a long north-west/south-east lobby with a stairwell to the north-west end and a doorway through to the office Room 0/3 to the south-east.

The main entrance is through a large pointed arched doorway into the porch area with elaborate timberwork and glazing above (Plate 49). This leads into the porch area with terra-cotta floor tiling and the interior side of the large main entrance door, which shows some original fittings (Plate 50). To either side is a small widely splayed depressed arch porch window lighting the space, although these were boarded to the exterior at the time of survey (Plate 51).

To the north-west of the lobby is the stairwell leading to (what would have been) the first floor galleries (Plate 52). The stone stairs have a modern-style iron and timber banister rail. To the opposite south-east side a partition wall has divided the space into office Room 0/3.

To the immediate north-west side of the main entrance is also a large plain, frosted and fixed glazed two part pointed arch window with oculus above, boarded to the exterior (Plate 53).

Room 0/3

This small office located to the south-east side of the lobby has glazed panelling to the south-west wall matching that to the opposite side in Room 0/1 (Plate 54). To the north-east wall, the window identical to that on the other side on Room 0/2, has also been boarded to the exterior (Plate 55). The room has been whitewashed and is presently used for storage, although retains its timber panelling.

Room 0/4

This space is the rear 'lobby' to the south-west of the church and features the stairwell to the north-west side, identical to that in Room 0/2 (Plate 56), and a partition wall creating a separate restroom and toilet to the south-east (Plate 57). Although boarded to the Nave side in Room 0/1, the glazing above the panelling of the north-east wall can be seen on this side (Plate 58). In contrast to that on the north-east wall of the Nave 0/1, however, the glazing features a nice blue flower design within the leaded pattern. Original fixings for the openings of the frames can also be identified (Plate 59).

In the opposite south-west wall is another main entrance, off-set to the north-west side, with a double set of timber doors set slightly forward and plainly squared stained glass in a panel above (Plate 60). The adjacent window to the immediate south-west has been boarded up to the interior.

Room 0/5

This small restroom has a continuing section of panelling along the north-east wall, matching that to the north-east wall of the Nave, Room 0/1 (Plate 61). In the opposite south-west wall, the original window has been blocked (Plate 62). A small toilet has been inserted into the west corner of the room, accessed from Room 0/4 and necessitating the creation of a small toilet window in the south-west wall.

5.2.3 The First Floor

Room 1/1

The first floor largely consists of an open space, with the remnants of the gallery seating to the north-east and south-west sides. As the floor is a false ceiling, it consists of chipboard panelling apart from the timber steps of the gallery seating. The north-east side has vertical timber panelling below the large three-part pointed arch window with flanking smaller windows, the tiered seating in front with a large silver-painted cast-iron radiator below the central window (Plate 63).

The south-east wall, as with the ground floor, is dominated by the centrally-placed rounded organ bay, with the top of the organ poking out from above the false floor (Plate 64). It has a domed roof with timber supports and a central timber-carved boss (Plate 65) with stencilling below (Plate 66). There are then three rectangular windows below this to the south-east, north-east and south-west (Plate 67). The top of the organ was decorated with carved wooden finials, some of which had been removed and also had a fascia of carved timberwork, all largely obscured by the false ceiling (Plates 68 & 69). Remnants of the pipes system for the

organ have also survived which can be viewed by looking down from the first floor (Plate 70). To either side of the organ, were simple rectangular windows with stained glass windows (Plates 71 & 72).

The end south-west wall - as with the opposite wall – had the remains of the timber tiering for the gallery seating, set before a larger pointed arch window (Plates 73 & 74).

The north-west transept was set back with its own seating, partitioned off from the main gallery by timber panelling (Plate 75). The north-east and south-west sides were identical, with the top of the windows from the ground floor adjacent to another doorway leading from the stairwell (Plates 76 & 77). Above the doorway in the south-west wall was another plaque in memory of an 'Aunt Eliza' (Plate 78).

The timber roof was in a highly polished wood, with only the rafters exposed, supported against the walls over stone pedestals and with a carved decorations (Plates 79 – 81). To the centre of the plastered ceiling was a moulded surround with plain circular moulds to the north-east and south-west sides (Plates 82 – 84). The roof over the north transept was less elaborate with a plain rectangular light (Plate 85).

5.2.4 *Room 0/1 after the removal of the organ*

With the exception of the main front screen the organ was removed at both floor levels (Plate 86). Behind it, the stone rubble waling was partially exposed to the rear of the rounded bay and a clear levelling course was visible) (Plates 87 & 88). However, to the east and west sides, some decorative plasterwork was located, a red on brown with some gold (Plates 89 & 90). There was a small cavity below the organ area forming a small knee high crawl space, latterly used as a store, although originally there may have been the mechanisms for the operation of a larger or original organ. No other new features were identified after the organ removal to the first floor, the decorative plasterwork and exposed stone rubble walling ceasing to the level below the first floor windows (Plates 91 & 92).

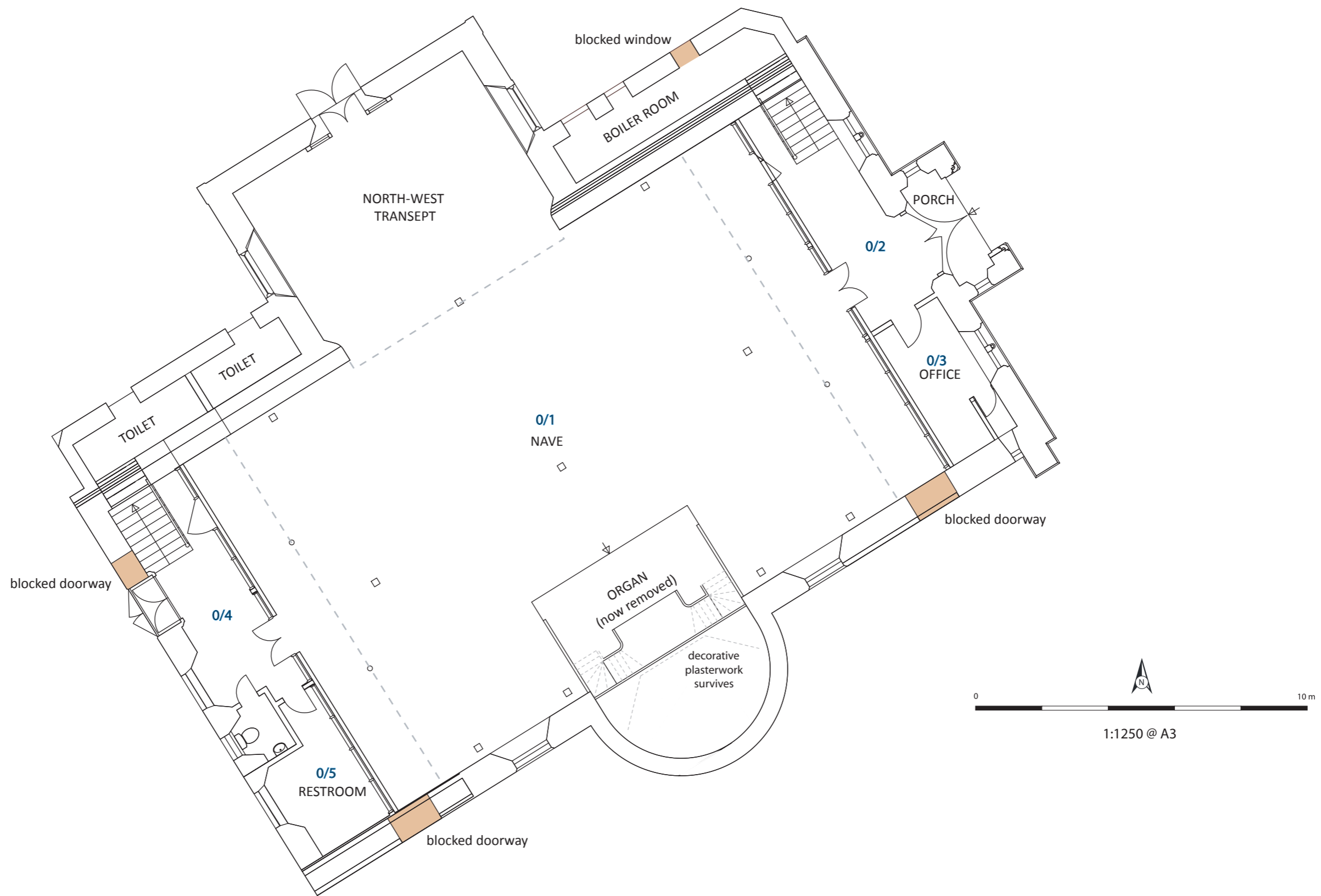


Figure 10: Buccleuch Church, 33 Chapel Street, ground floor plan

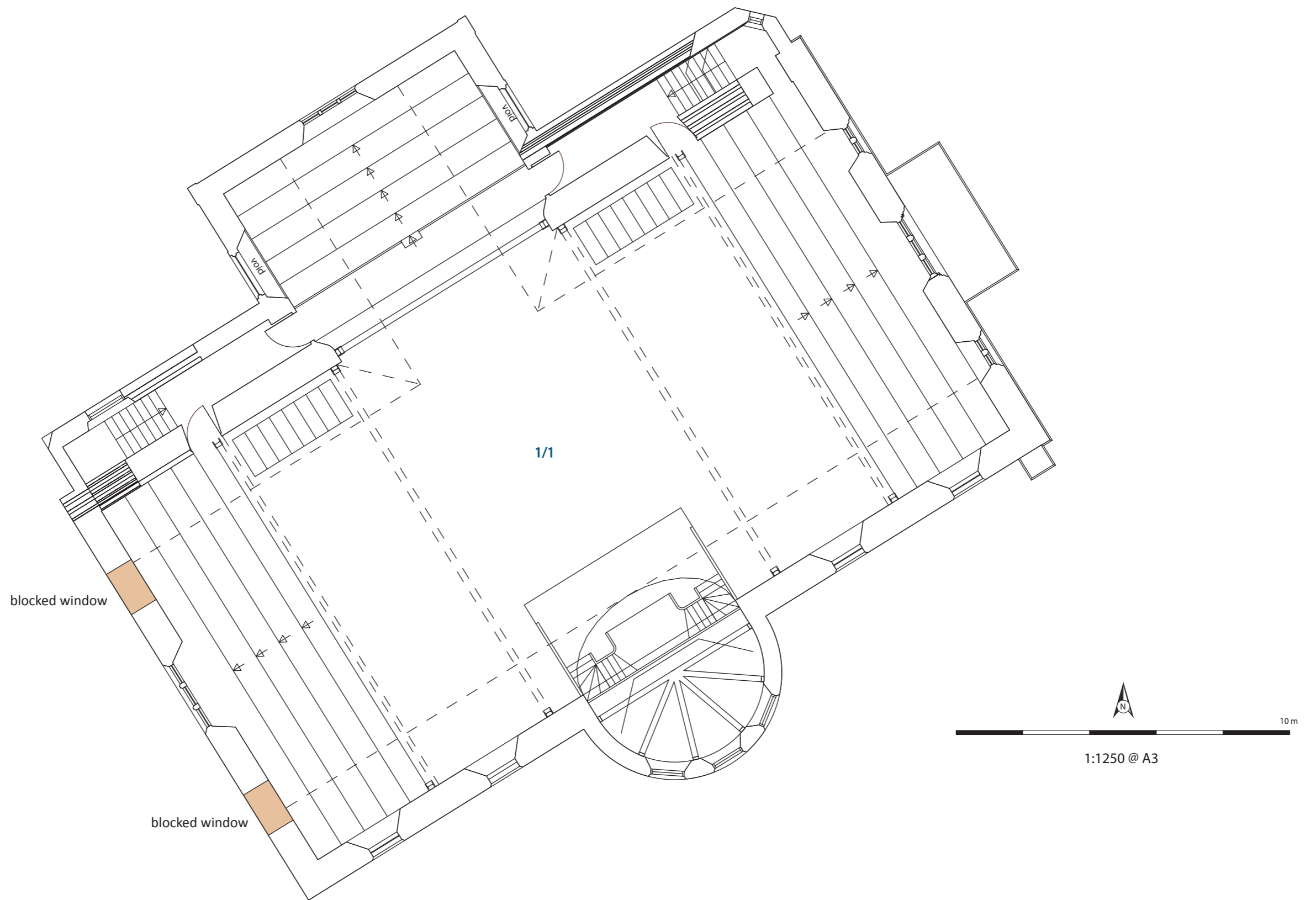


Figure 11: Buccleuch Church, 33 Chapel Street, first floor plan



Plate 1: General view from the east



Plate 2: North-east elevation, detail of porch from the north-east



Plate 3: North-east elevation, detail of datestone on porch, from the north-east



Plate 4: North-east elevation, detail of column head on the north-west side, from the east



Plate 5: North-east elevation, detail of column head on the south-east side, from the north



Plate 6: North-east elevation, detail of door hinge from the north-east



Plate 7: North-east elevation, detail of door fittings from the north-east



Plate 8: South-east elevation, general view from the east



Plate 9: South-east elevation, general view from the south



Plate 10: South-east elevation, detail of buttress to the north-east end, from the south-east

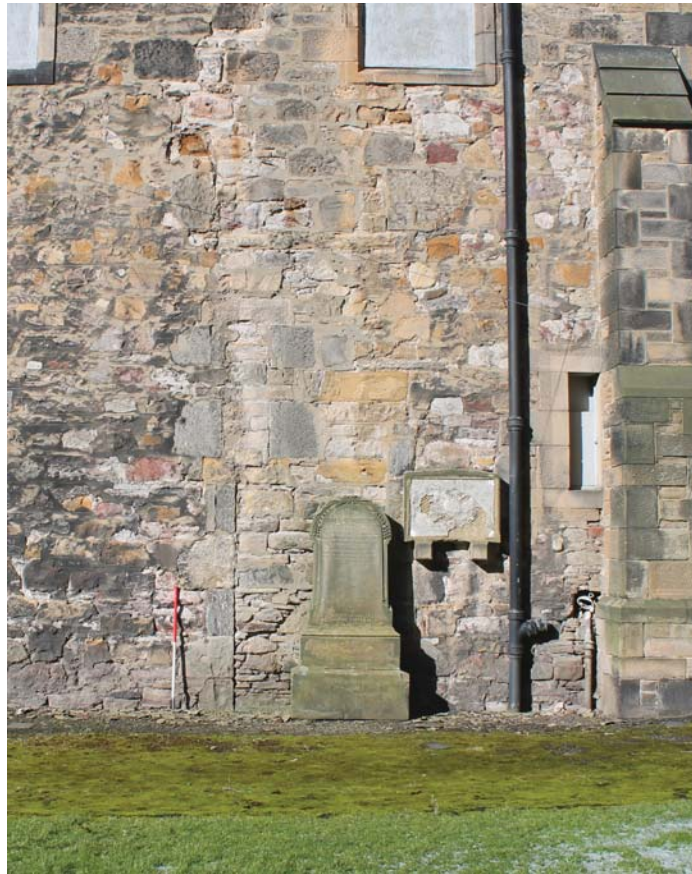


Plate 11: South-east elevation, detail of the blocked opening to the north-east side from the south-east

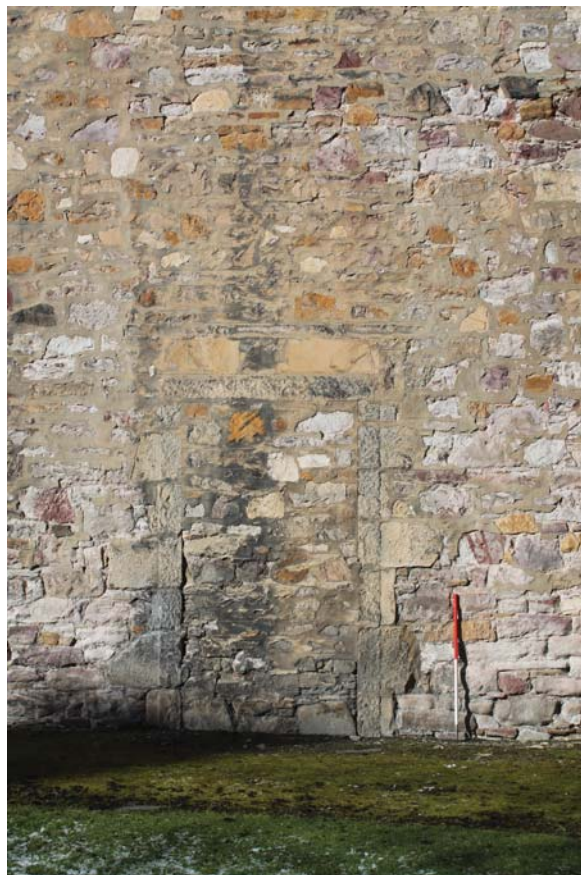


Plate 12: South-east elevation, detail of the blocked opening to the south-west side from the south-east



Plate 13: North-west elevation, general view from the NNE



Plate 14: North-west elevation, detail of north-west transept, from the NNE



Plate 15: North-west elevation, detail of the ground floor of the north-west transept from the north



Plate 16: North-west transept, north-east elevation, detail of the large window and blocking beneath, from the north-east



Plate 17: North-west elevation, general view of the openings to the Boiler House on the north-east side, from the north-west



Plate 18: Detail of the north tower from the east



Plate 19: South-west elevation, general view from the south



Plate 20: South-west elevation, detail of the window on the south-east side from the south-west



Plate 21: South-west elevation, detail of the blocked first floor window on the south-east side, from the west



Plate 22: South-west elevation, detail of the inserted toilet window on the south-east side, from the south-west



Plate 23: South-west elevation, detail of the central window, showing blocking beneath, from the south-west



Plate 24: South-west elevation, detail of the main doorway to the north-west side showing the original blocked entrance from the west



Plate 25: South-west elevation, detail of first floor central window from the south-west



Plate 26: Room 0/1, general view from the south



Plate 27: Room 0/1, general view from the east



Plate 28: Room 0/1, general view of the north-east wall from the south-west

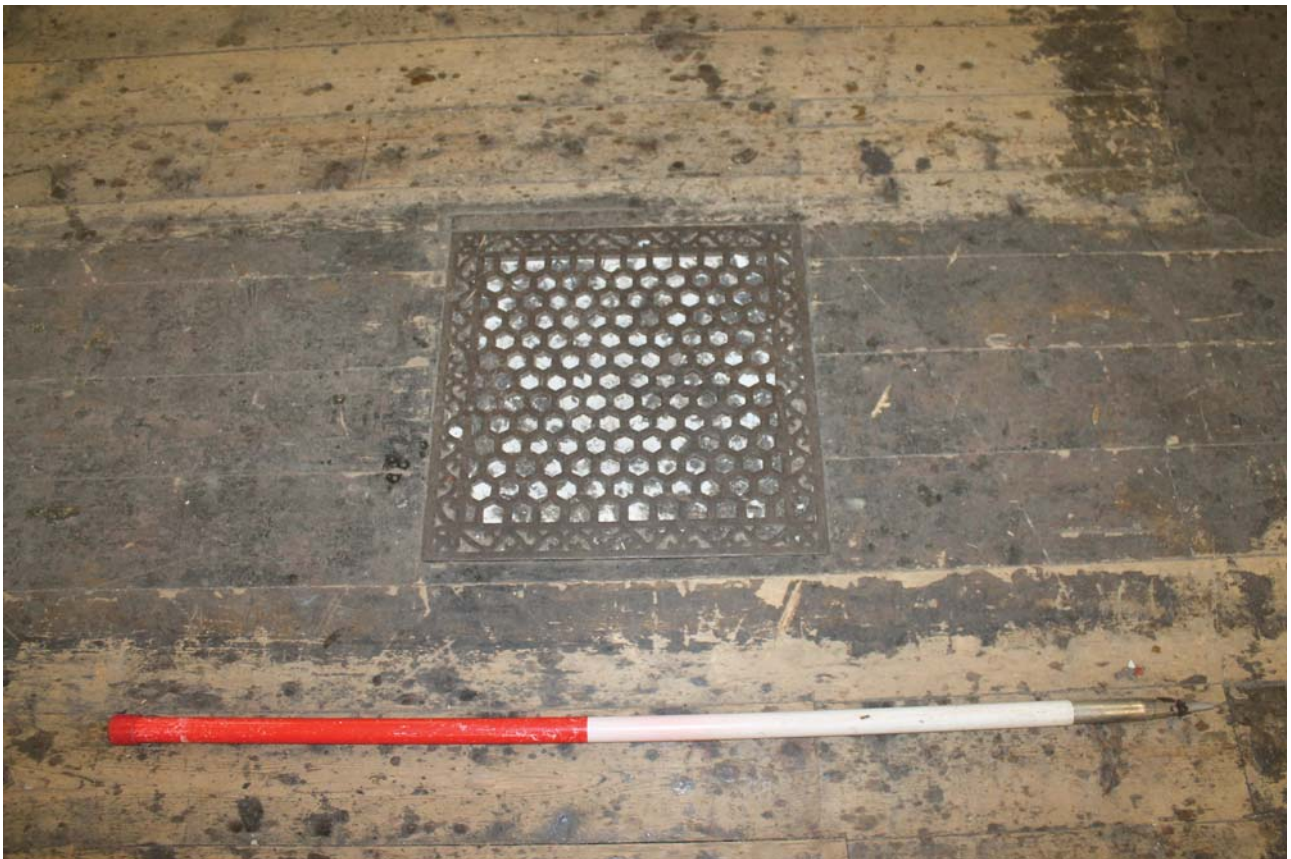


Plate 29: Room 0/1, detail of floor vent



Plate 30: Room 0/1, detail of column from the north



Plate 31: Room 0/1, detail of column head from the north



Plate 32: Room 0/1, detail of column in front of the north-west transept from the east



Plate 33: Room 0/1, detail of column head in front of the north-west transept from the east



Plate 34: Room 0/1, general view of the organ in the south-east wall from the west



Plate 35: Room 0/1, general view of the organ in the south-east wall from the north



Plate 36: Room 0/1, detail of the organ steps to the south-west side from the north-west



Plate 37: Room 0/1, detail of the organ from the north-west

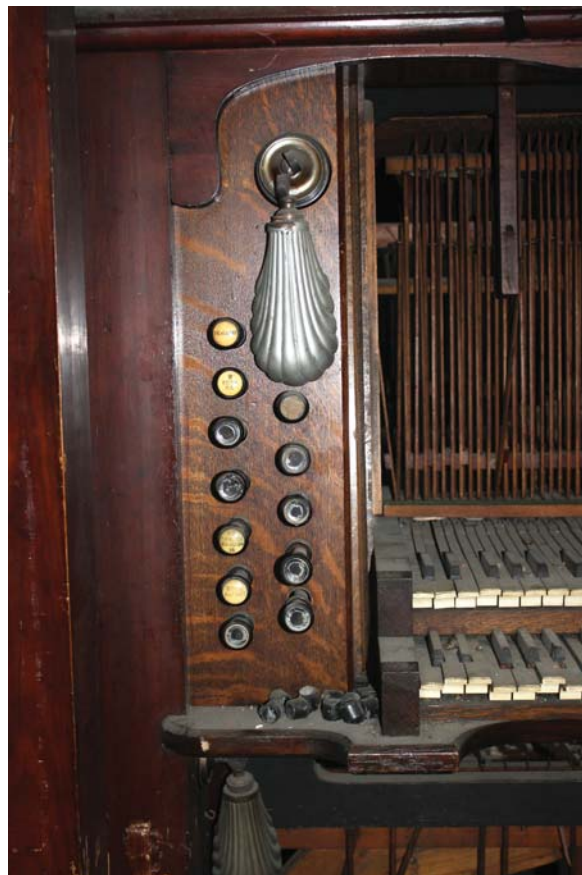


Plate 38: Room 0/1, detail of the organ from the north-west



Plate 39: Room 0/1, detail of the organ fitting from the west



Plate 40: Room 0/1, detail of the organ from the north-west



Plate 41: Room 0/1, detail of the organ fitting from the north

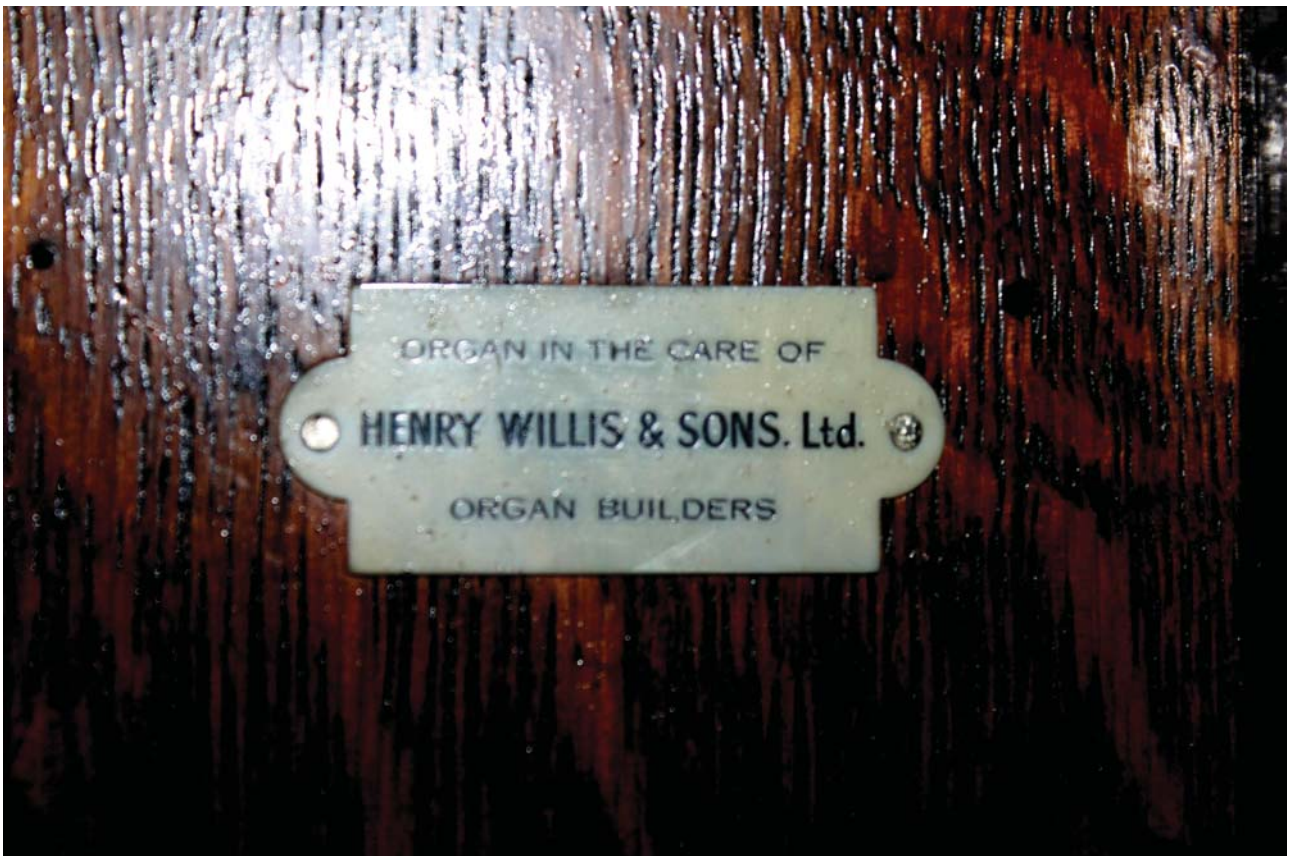


Plate 42: Room 0/1, detail of the Henry Willis & Sons Ltd plaque on the south-west side of the organ, from the north-west



Plate 43: Room 0/1, detail of the window to the north-east side of the south-east wall from the north-west



Plate 44: Room 0/1, detail of the window on the south-west side of the south-east wall from the north-west



Plate 45: Room 0/1, detail of the door in the north-west wall of the north-west transept, from the east



Plate 46: Room 0/1, detail of the window on the south-west wall of the north-west transept, from the north-east



Plate 47: Room 0/1, detail of the window on the north-east wall of the north-west transept, from the south-west

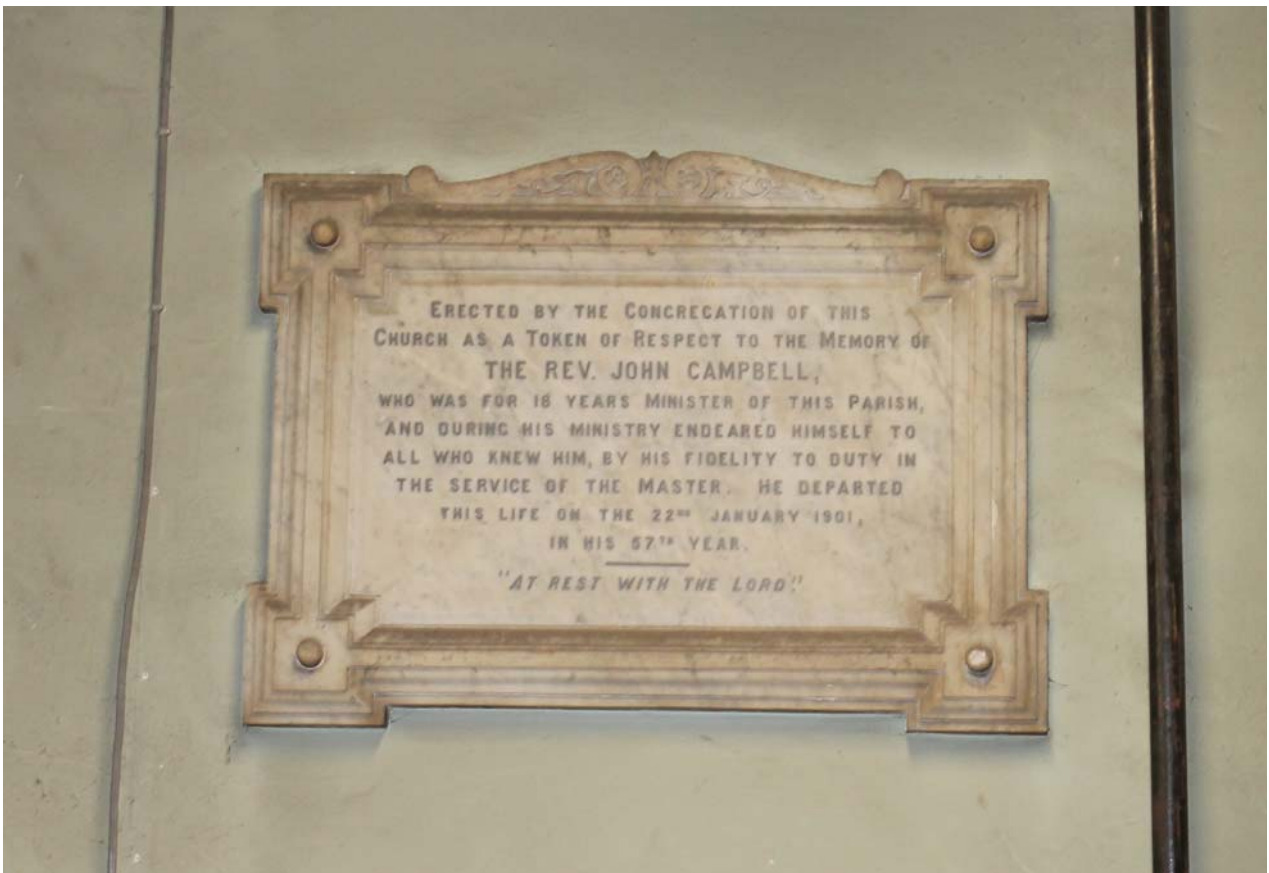


Plate 48: Room 0/1, detail of the memorial plaque on the north-east side of the north-west wall of the nave, from the south-east



Plate 49: Room 0/2, detail of the main entrance from the west



Plate 50: Room 0/2, detail of door fittings to the porch in the north-west wall, from the south-west



Plate 51: Room 0/2, detail of small arched window to the north-west side of the porch, from the south-east



Plate 52: Room 0/2, general view showing stairs from the south-east



Plate 53: Room 0/2, detail of window in the north-east wall to the north-west side of the porch, from the west



Plate 54: Room 0/3, general view of south-west wall and glazed panelling from the north



Plate 55: Room 0/3, detail of window in the north-east wall from the west



Plate 56: Room 0/4, general view of the stairwell from the south-east



Plate 57: Room 0/4, general view from the north-west



Plate 58: Room 0/4, detail of partition glazing from the south-west



Plate 59: Room 0/4, detail of latch on partition glazing from the west



Plate 60: Room 0/4, detail of main doorway from the east



Plate 61: Room 0/5, general view of partition glazing in the north-east wall from the south

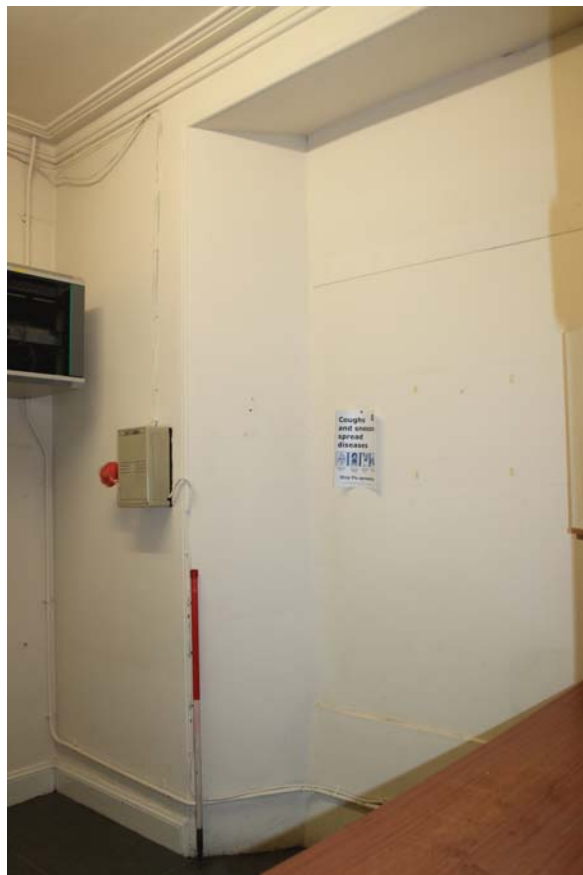


Plate 62: Room 0/5, detail of blocked opening in the south-west wall from the north



Plate 63: Room 1/1, general view from the south-west



Plate 64: Room 1/1, general view from the north-west



Plate 65: Room 1/1, detail of boss above organ bay from the north-west



Plate 66: Room 1/1, detail of stencilling in the organ bay from the north-west



Plate 67: Room 1/1, detail of window in the organ bay from the north-west



Plate 68: Room 1/1, detail of timberwork to the top of the organ from the north



Plate 69: Room 1/1, detail of the timberwork to the top of the organ from the north



Plate 70: Room 1/1, detail of the top of the timberwork of the piping of the organ from the north



Plate 71: Room 1/1, detail of the window in the south-east wall to the north-east of the organ from the south-west



Plate 72: Room 1/1, detail of the window in the south-east wall to the south-west of the organ from the south-west



Plate 73: Room 1/1, general view from the south-west



Plate 74: Room 1/1, detail of window in the north-east wall from the north-east



Plate 75: Room 1/1, general view of the north-west transept from the south-east



Plate 76: Room 1/1, general view of north-east wall of the north-west transept from the south



Plate 77: Room 1/1, general view of the south-west wall of the north-west transept from the north-east



Plate 78: Room 1/1, detail of plaque on the south-west wall of the north-west transept from the north-east



Plate 79: Room 1/1, detail of moulded timber rafter on the south-east wall from the north



Plate 80: Room 1/1, detail of moulded timber rafter on the south-east wall from the NNE



Plate 81: Room 1/1, general view of the ceiling from the west



Plate 82: Room 1/1, general view of the ceiling from the south



Plate 83: Room 1/1, detail of central the ceiling from the south-west



Plate 84: Room 1/1, general view of the ceiling from the east



Plate 85: Room 1/1, general view of the ceiling of the north-west transept from the east



Plate 86: Room 0/1, general view of screen in the north-west wall after the removal of the organ, from the south



Plate 87: Room 0/1, general view of the exposed stone rubble wall looking down from Room 1/1 after the removal of the organ, from the south



Plate 88: Room 0/1, general view of the exposed stone rubble wall after the removal of the organ, from the south



Plate 89: Room 0/1, detail of decorative plasterwork in the north-west wall after the removal of the organ, from the south



Plate 90: Room 0/1, detail of decorative plasterwork in the north-west wall after the removal of the organ, from the south



Plate 91: Room 1/1, general view of the north-west wall after the removal of the organ, from the south-east



Plate 92: General view of the ceiling of the organ bay to the north-west

6 DISCUSSION

6.1 The 18th century Church

6.1.1 Buccleuch Parish Church – or St Cuthbert’s Chapel of Ease as it was originally known – was constructed in the typical style of the 18th century. That is, concentration on the Nave of the church, with access to overhead tiered galleries for extra seating, with a small transept for more private worship, or for more prominent families in the area. The false ceiling has now lessened the effect of this church, and that of the imposing organ.

6.2 Phasing

6.2.1 The original layout we can see from the 1852 map. Starting with the main entrance to the north-east, there was no entrance lobby (Room 0/2), only a small porch that appeared to enter straight into the Nave, with a small doorway to the north-west side to access the upper galleries. The rear south-west side of the church was a mirror image of this, only with a smaller porch through a central doorway. This was later converted into a window in the 1860s refurbishment, as we can see by the blocking below the window today on the south-west elevation. What is interesting, however, is the blocked opening to the north-west side of this wall. An original window is depicted here and this was also blocked up when a later door – off-set to this side – was inserted, also in the 1860s refurbishment. The north tower was also an addition added by David McGibbon, perhaps to create a belfry.

6.2.2 Moving around to the south-elevation, there were two main doorways into the Nave at this side; this was to provide access to those sitting in the lower galleries. It is clear these were blocked up as part of the 1860s refurbishment, as we can see on the building today and also in the 1877 map. What is curious is a small window to the north-east side of this elevation noted on the 1877 map. This is not in the position of the inserted toilet window in Room 0/3, and evidence of it cannot be seen on the building today.

6.3 The internal layout of the church was altered in the 1860s refurbishment to include more enclosed spaces at the north-east and south-west of the church which necessitated the changes mentioned above as well as the insertion of the panelling and glazing to Rooms 0/2 & 0/4. A small boiler room was also added beneath the north-east stair and a small toilet block to the south-west, although whether this was the latter’s original function is unknown. Originally, as we can see in the 1877 map, the lobbies were segregated. To the north-east there was a small room to the south-west side, and the corridor leading to the stairwell was also partitioned off. To the south-west side, the main entrance had its own little porch leading straight to the stairwell, with the main lobby open, access into the Nave through the door to the glazed partition wall. It was not until later – perhaps as part of the new Hall construction in the 1900s – that the lobbies were opened up and two small offices were created to the south-east side of them.

6.4 Later interventions came with the change in function of the church as more of a community building, although when some of these changes were made is unknown. However, it has been noted that these changes probably occurred after 1969 when the Buccleuch Congregation amalgamated with the Kirk O’ Field and the University of Edinburgh used the building as a furniture store. It was after this time that the building had a more community function. A small toilet was added to the south-west office (0/5) necessitating the insertion of a small window, ditto to the north-east office (0/3). The false ceiling is a much more modern addition, as can be seen by the fireproof material used, and necessitated the addition of a number of square encased columns to support it. It also greatly altered the appearance and grandiosity of the church, especially in the area of the organ, which was a huge affair dominating the entirety of the building, its pipes rising to the first floor.

6.5 Little could be found out as to the date of the organ or when it was inserted. The company Henry Willis & Sons Ltd are an old company, so could have supplied the organ as part of the 1860s refurbishment, although they are still in operation today, so could have easily been involved in its maintenance at a later date in the late 19th or 20th centuries. Prior to its removal, it was in bad repair, and has been stripped of its vital parts, and been greatly disturbed by the insertion of the false ceiling. However, parts of the woodwork were finely

carved and still relatively intact; the screen is being retained. The decorative plasterwork looks worn and old and also looks to have been disturbed by the addition of the later organ, with the central area completely devoid of it and exposed to the stonework. Hence these decorative features may date to the Victorian period.

7 CONCLUSIONS & FURTHER WORKS

- 7.1 This report has recorded the building as it stands prior to development and nor further historic building recording is recommended.
- 7.2 Given the historical nature of the church and also the likelihood of uncovering human remains, a watching brief is required on all ground-breaking works associated with the refurbishment of the building as part of the planning consent. The results of any works will also be included into this report to create a final historical report on the church for the archive.

8 REFERENCES

8.1 Bibliographical references

RIAS ud 'Buccleuch Parish Church', <http://www.microview.org.uk/millennium/Pages/buccleuch.htm>, Accessed 4th March 2015

Scottish Planning Policy SPP23. 2008 *Archaeology and Planning*. Scottish Government Nov 2008.

Scottish Government 2011 *Planning and Archaeology 2/2011*.

8.2 Cartographic references

1747 - 55	William Roy	<i>Military Map of Scotland</i>
1784	Alexander Kincaid	<i>A plan of the city and suburbs of Edinburgh</i>
1804	John Ainslie	<i>Old and New Town of Edinburgh and Leith</i>
1852	Ordnance Survey	<i>Edinburgh Sheet 40</i>
1877	Ordnance Survey	<i>Edinburgh Sheet 40</i>
1894	Ordnance Survey	<i>Edinburgh Sheet III.12.1</i>
1907	J G Bartholomew	<i>Bartholomew's Plan of Edinburgh and Leith with Suburbs</i>
1911	W & A K Johnston	<i>Post office plan of Edinburgh, Leith, and Portobello, with suburbs</i>
1949	Ordnance Survey	<i>Plan NT2672</i>

APPENDIX 1: PHOTOGRAPHIC RECORD

Black & White Print & Colour Digital Film # 1

Frame	Area	Description	Taken From	Date
1	Room 0/1	Detail of plaque on organ	NW	03/03/2014
2	Room 0/1	Detail of organ	NW	03/03/2014
3	Room 0/1	Detail of stairwell to the SW side of the organ	NW	03/03/2014
4	Room 0/1	Detail of stairwell to the NE side of the organ	NW	03/03/2014
5	Room 0/1	General view of the organ	N	03/03/2014
6	Room 0/1	General view of the organ	W	03/03/2014
7	Room 0/1	General view of the NE wall of the NW Transept	SW	03/03/2014
8	Room 0/1	General view of the SW wall of the NW Transept	NE	03/03/2014
9	Room 0/1	General view of the NW Transept	E	03/03/2014
10	SW Elevation	Detail of blocked original opening and main doorway to the NW side	S	03/03/2014
11 – 12	SW Elevation	Detail of central window	SW	03/03/2014
13	SW Elevation	Detail of small inserted toilet window	SW	03/03/2014
14	SW Elevation	Detail of the blocking below the window to the SE side	SW	03/03/2014
15 – 16	SW Elevation	Detail of window to the SE side	SW	03/03/2014
17 – 18	SW Elevation	General view (ground floor)	S	03/03/2014
19	SE Elevation	Detail of blocked door on SW side	SE	03/03/2014
20	SE Elevation	General view of SE side	SE	03/03/2014
21	SE Elevation	Detail of organ bay	S	03/03/2014
22	SE Elevation	General view	S	03/03/2014
23	SE Elevation	Detail of organ bay	E	03/03/2014
24	SE Elevation	General view	E	03/03/2014
25	SE Elevation	Detail of blocked door in the NE side	SE	03/03/2014
26	SE Elevation	General view of the NE side (ground floor)	SE	03/03/2014
27	NW Elevation	General view of NW transept	NNW	03/03/2014
28	NW Elevation	General view	NNW	03/03/2014
29 – 30	NE Elevation	Detail of ground floor of the NW transept	NE	03/03/2014
31	NE Elevation	General view of NW transept	NE	03/03/2014
32	NW Elevation	General view of boiler house openings	NW	03/03/2014
33	NE Elevation	Detail of column capital to porch on the SE side	N	03/03/2014
34 – 35	NE Elevation	Detail of column head to porch on the NW side	E	03/03/2014
36	-	Registration	-	03/03/2014

Black & White Print & Colour Digital Film # 2

Frame	Area	Description	Taken From	Date
1	Room 0/1	General view looking at the NE side of the SE wall behind partitioned walling	NW	03/03/2014
2	Room 0/2	Detail of door fittings to main entrance in NE wall	SW	03/03/2014
3	Room 0/2	Detail of small porch window win the NW wall	SE	03/03/2014
4	Room 0/2	Detail of main entrance between lobby and porch	W	03/03/2014
5	Room 0/2	Detail of window in the NE wall to the NW side	S	03/03/2014
6	Room 0/2	General view looking at stairwell	SE	03/03/2014
7	Room 0/1	General view of NE wall	SW	03/03/2014
8	Room 0/1	Detail of elaborate column between the Nave and the NW transept	E	03/03/2014
9	Room 0/1	Detail of elaborate column head between the Nave and the NW transept	E	03/03/2014
10	Room 0/1	General view of the NW wall to the NE side	SE	03/03/2014
11	Room 0/1	Detail of window in the SE wall to the NE side	NW	03/03/2014
12	Room 0/5	Detail of the blocked window on the SW wall	N	03/03/2014
13	Room 0/5	Detail of the glazed panelled wall to the NE wall	S	03/03/2014
14	Room 0/4	Detail of opening fixings to the upper window of the glazed panelling in the NE wall (same window as in Shot 2/14)	W	03/03/2014
15	Room 0/4	Detail of the blue rose decorative stained glass in the upper glazing of the panelled NE wall	SSW	03/03/2014
16	Room 0/4	General view	NW	03/03/2014
17	Room 0/4	General view of stairwell	SE	03/03/2014
18	Room 0/4	Detail of main entrance in the SW wall	E	03/03/2014
19	Room 0/4	Detail of memorial plaque on the NE side of the NW wall	SE	03/03/2014
20	Room 0/1	General view of the NE wall	SW	03/03/2014
21	Room 0/1	Vent detail	SW	03/03/2014
22	Room 0/1	General view of the SW side of the NW wall	SE	03/03/2014
23	Room 0/1	Detail of window in the SE wall to the SW side	NW	03/03/2014
24	Room 0/1	Detail of column head to the SW side of the Nave	N	03/03/2014
25 – 26	Room 0/1	Detail of column to the SW side of the Nave	N	03/03/2014
27	Room 0/1	Detail of radiator in front of organ	NE	03/03/2014
28	Room 0/1	General view	E	03/03/2014
29	Room 0/1	General view	S	03/03/2014
30	Room 0/1	General view	E	03/03/2014
31	Room 0/1	General view	S	03/03/2014
32	Room 0/1	Detail of Henry Willis & Sons Ltd plaque on organ	NW	03/03/2014
33	Room 0/1	Detail of empty fixing on the SW side of the organ	N	03/03/2014
34	Room 0/1	Detail of shell fitting on the NE side of the organ	NW	03/03/2014
35	Room 0/1	Detail of shell fitting on the NE side of the organ	W	03/03/2014
36	-	Registration	-	03/03/2014

Black & White Print & Colour Digital Film # 3

Frame	Area	Description	Taken From	Date
1	Room 1/1	Detail of timber organ piping, looking down from the railing of the first floor	W	03/03/2014
2	Room 1/1	General view of the ceiling	S	03/03/2014
3	Room 1/1	Close detail of the timber decorative rafter on the SE wall	N	03/03/2014
4	Room 1/1	General view of ceiling in the NW transept	E	03/03/2014
5 – 6	Room 1/1	Detail of the timberwork exposed to the SW side of the organ	N	03/03/2014
7	Room 1/1	Detail of the remains of the timber finials to the NE side of the organ	W	03/03/2014
8	Room 1/1	Detail of the finials to the SW side of the organ	N	03/03/2014
9	Room 1/1	General view of ceiling	NW	03/03/2014
10	Room 1/1	General view of ceiling	W	03/03/2014
11	Room 1/1	General view of ceiling	N	03/03/2014
12	Room 1/1	General view of the SW wall of the NW transept	NE	03/03/2014
13	Room 1/1	General view of the NE wall of the NW transept	S	03/03/2014
14	Room 1/1	Detail of the plaque above the stairwell door of the SW wall of the NW transept	NE	03/03/2014
15 – 16	Room 1/1	Detail of window in the NW wall of the NW transept	SE	03/03/2014
17	Room 1/1	Detail of window in organ bay in the SE wall	N	03/03/2014
18	Room 1/1	Detail of window in organ bay in the SE wall	W	03/03/2014
19	Room 1/1	Detail of window in organ bay in the SE wall	NW	03/03/2014
20	Room 1/1	Detail of stencilling in the centre bay of the organ bay in the SE wall	NW	03/03/2014
21	Room 1/1	Detail of timber boss above organ bay	NW	03/03/2014
22	Room 1/1	General view of the NW transept	SE	03/03/2014
23 – 24	Room 1/1	General view	E	03/03/2014
25 - 26	Room 1/1	General view of the NE wall	SW	03/03/2014
27	Room 1/1	Detail of the window in the NE side of the SE wall	NW	03/03/2014
28 – 29	Room 1/1	General view of the E corner	W	03/03/2014
30	Room 1/1	General view of the S corner	N	03/03/2014
31 – 32	Room 1/1	General view of the SW wall	NE	03/03/2014
33	Room 1/1	Detail of window to NE wall	SE	03/03/2014
34	Room 1/1	Detail of rafter on the SE wall	N	03/03/2014
35	Room 1/1	Detail of window on the SW side of the SE wall	NW	03/03/2014
36	-	Registration	-	03/03/2014

Black & White Print & Colour Digital Film # 4

Frame	Area	Description	Taken From	Date
1	NE Elevation	Detail of the clock face at the top of the gable	NE	03/03/2014
2	NE Elevation	Detail of porch	NE	03/03/2014
3	NE Elevation	Detail of datestone on porch	NE	03/03/2014
4 – 5	-	Detail of tower on N corner	E	03/03/2014
6	-	General view	E	03/03/2014
7 – 8	SE Elevation	General view of the first floor of the organ bay	E	03/03/2014
9 – 10	-	General view	NEE	03/03/2014
11 – 12	-	General view	NNE	03/03/2014
13 – 14	-	General view	N	03/03/2014
15 – 16	SW Elevation	Detail of blocked openings and doorway on the NW side	S	03/03/2014
17	SW Elevation	Detail of stone-blocked first floor window on the SE side	W	03/03/2014
18	SW Elevation	Detail of stone-blocked first floor window on the NW side	S	03/03/2014
19	SW Elevation	Detail of central first floor window	SW	03/03/2014
20	SW Elevation	Detail of central openings	SW	03/03/2014
21	SW Elevation	Detail of window on the SE side	SW	03/03/2014
22 – 23	NE Elevation	Detail of door fittings	NE	03/03/2014
24	NE Elevation	Detail of door hinge	NE	03/03/2014
25 – 26	NE Elevation	Detail of main entrance	W	03/03/2014
27	NE Elevation	Detail of engaged column on SE side of porch	W	03/03/2014
28	NW Elevation	General view	NW	03/03/2014
29 – 30	NW Elevation	General view	NW	03/03/2014
31 – 32	NW Elevation	General view	NW	03/03/2014
33	NW Elevation	General view of Boiler Room openings	NW	03/03/2014
34	Room 0/3	Detail of window in the NE wall	W	03/03/2014
35	Room 0/3	Detail of glazed partition SW wall	N	03/03/2014
36	-	Registration	-	03/03/2014

Black & White Print & Colour Digital Film # 5 (After Organ Removal)

Frame	Area	Description	Taken From	Date
1 – 7	-	Unassigned	-	27/03/2015
8	-	Registration	-	27/03/2015
9	Room 0/1	General view of screen in NW wall	E	27/03/2015
10 – 11	Room 0/1	General view of screen in NW wall	S	27/03/2015
12	Room 0/1	Close detail of decorative plasterwork	N	27/03/2015
13	Room 0/1	Detail looking up at the roof of the organ bay	-	27/03/2015
14 – 15	Room 0/1	Detail of the exposed decorative plasterwork on the NE side of the NW organ bay	SW	27/03/2015
16 – 17	Room 0/1	Detail of panelling and exposed walling to the W side of the NW organ bay	SWW	27/03/2015
18	Room 0/1	Detail of panelling and exposed walling to the W side of the NW organ bay	E	27/03/2015
19 – 20	Room 1/1	Detail of parts of the organ on the floor after removal	N	27/03/2015
21 – 22	Room 1/1	Detail of base and parts of the organ on the floor after removal	S	27/03/2015
23	Room 0/1	Detail looking down at the exposed stone rubble wall of the NW organ bay	SE	27/03/2015
24	Room 1/1	Detail of the SW-most window in the NW organ bay	S	27/03/2015
25	Room 1/1	Detail of the SW-most window in the NW organ bay	SEE	27/03/2015
26	Room 1/1	General view of removed pipes from organ lying on the floor	W	27/03/2015
27 – 28	Room 1/1	Detail of corbel on NE side of organ bay	SE	27/03/2015
29	Room 1/1	Looking down at decorative plasterwork and stone wall in organ bay	SW	27/03/2015
30	Room 1/1	Detail of window in organ bay, NW wall	SE	27/03/2015
31 – 32	Room 1/1	General view of organ area	SE	27/03/2015
33 – 34	Room 1/1	General view looking at the decorative plasterwork below	SW	27/03/2015
35 – 36	Beneath Organ	Detail of small motor located beneath the organ	E	27/03/2015

APPENDIX 2: DISCOVERY AND EXCAVATION IN SCOTLAND (DES) ENTRY

LOCAL AUTHORITY:	City of Edinburgh Council
PROJECT TITLE/SITE NAME	Buccleuch Church, 33 Chapel Street
PROJECT CODE:	AOC 22983
PARISH:	Edinburgh (City of)
NAME OF CONTRIBUTOR:	Diana Sproat
NAME OF ORGANISATION:	AOC Archaeology Group
TYPE(S) OF PROJECT:	Historic Building Recording & Archaeological Watching Brief
NMRS NO(S):	NT27SE 1975
SITE/MONUMENT TYPE(S):	Church
SIGNIFICANT FINDS:	None
NGR (2 letters, 6 figures)	NT 26054 72932
START DATE (this season)	3 rd March 2015
END DATE (this season)	27 th March 2015
PREVIOUS WORK (incl. DES ref.)	None.
MAIN (NARRATIVE) DESCRIPTION: (May include information from other fields)	AOC Archaeology Group was commissioned by the Orthodox Community of St Andrew to undertake an historic building survey of the redundant Buccleuch Church at 33 Chapel Street, Edinburgh, as part of a condition on the planning application to refurbish the building. The church was originally built in the 1750s, although was refurbished in the 1860s. The original church would have had an open gallery to the first floor, although at the time of survey a false ceiling had been put in to create two separate floors. It was most recently used as a community centre. The survey recorded the building prior to any alterations, and also after the removal of the organ against the east wall. An archaeological watching brief is also required during any ground-breaking works associated with the conversion.
PROPOSED FUTURE WORK:	Archaeological Watching Brief
CAPTION(S) FOR ILLUSTRS:	None
SPONSOR OR FUNDING BODY:	Orthodox Community of St Andrew
ADDRESS OF MAIN CONTRIBUTOR:	AOC Archaeology Group, Edgefield Road Industrial Estate, Edgefield Road, Loanhead, Midlothian, EH20 9SY
EMAIL ADDRESS:	edinburgh@aocarchaeology.com
ARCHIVE LOCATION: (intended/deposited)	Archive to be deposited in NMRS



AOC Archaeology Group, Edgefield Industrial Estate, Edgefield Road, Loanhead EH20 9SY
tel: 0131 440 3593 | fax: 0131 440 3422 | e-mail: edinburgh@aocarchaeology.com

www.aocarchaeology.com