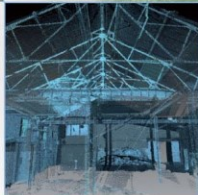


Whytefield, Port Ellen, Islay: Archaeological Evaluation Report

AOC Project 23053

28th April 2015



ARCHAEOLOGY

HERITAGE

CONSERVATION

Whytefield, Port Ellen, Islay: Evaluation Data Structure Report

On Behalf of:	Mr Alasdair Whyte Glenmachrie House Port Ellen Islay PA427AQ
National Grid Reference (NGR):	NJ 6780 6421
AOC Project No:	23053
Prepared by:	Jessica Lumb
Planning Application:	13/02675/PPP
Illustration by:	Jamie Humble
Date of Fieldwork:	April 2015
Date of Report:	April 2015

This document has been prepared in accordance with AOC standard operating procedures.

Author: Jessica Lumb

Date: 27th April 2015

Approved by: Lindsay Dunbar

Date: 27th April 2015

Draft/Final Report Stage: Draft

Date: 27th April 2015

Enquiries to: AOC Archaeology Group
Edgefield Industrial Estate
Edgefield Road
Loanhead
EH20 9SY

Tel. 0131 440 3593
Fax. 0131 440 3422
e-mail. admin@aocarchaeology.com



Contents

	Page
List of illustrations	1
List of Plates	1
List of appendices	1
Summary	2
1 INTRODUCTION	3
1.1 Background.....	3
1.2 Site location.....	3
1.3 Archaeological background	3
2 OBJECTIVES.....	3
3 METHODOLOGY	4
4 RESULTS.....	4
5 CONCLUSION	6
7 REFERENCES.....	7
APPENDIX 1: Trench Register	9
APPENDIX 2: Photographic Register	12
APPENDIX 3: Context Register.....	15
APPENDIX 4: Finds Register.....	15
APPENDIX 5: Sample Register	15
APPENDIX 6: 'Discovery and Excavation in Scotland' (DES) Report	16

List of illustrations

- Figure 1 : Site Location map
- Figure 2: Trench Location plan
- Figure 3: Archaeology in Trench 9

List of Plates

- Plate 1: Features in Trench 9 prior to trench extension
- Plate 2: Post ex pits [009], [007], and [005] (left to right)
- Plate 3: NW facing section [017]
- Plate 4: SW elevation of cottage

List of appendices

- Appendix 1: Trench Register
- Appendix 2: Context Register
- Appendix 3: Photographic Register
- Appendix 4: Sample Register
- Appendix 5: '*Discovery and Excavation in Scotland*' (DES) Report

Summary

This report presents the results of an archaeological evaluation undertaken by AOC Archaeology Group at Whytefield, Port Ellen, Islay (NGR: NR 36159 45858).

The evaluation required the machine trenching of 2000 linear metres. However, existing ground conditions and live services restricted the evaluation to 822 linear metres.

A localised distribution of thirteen pits was recorded providing evidence of early prehistoric occupation. A flint blade was recovered from the fill of one of the features.

1 INTRODUCTION

1.1 Background

- 1.1.1 A programme of archaeological works was required by Mr Alasdair Whyte in respect to a proposed residential development at Whytefield, Port Ellen, Islay. The archaeological works were necessary as part of the planning condition on the development (Planning Reference No: 13/02675/PPP). The need for and scope of the archaeological works was determined by the Argyll and Bute Council, who are advised on archaeological matters by the West of Scotland Archaeology Service (WOSAS).
- 1.1.2 The programme of archaeological works was in keeping with the policies outlined in Scottish Planning Policy (2010) and PAN 2/2011 Planning and Archaeology (2011) in order to record the extent and significance of any archaeological remains which may be present within the development area.
- 1.1.3 Thirteen localised pit/post-hole features were recorded. The majority of these features are probably of early prehistoric date. A flint blade was recovered from the fill of Pit [009].

1.2 Site location

- 1.2.1 The development area is located on the NW edge of Port Ellen, Islay and is currently a disused area of land. It is bounded to the SW by the A846, housing to the NW and SE as well as field systems to the north and is centred at NGR: NR 36159 45858.

1.3 Archaeological background

- 1.3.1 The development site lies within a relatively archaeologically rich and diverse surrounds according to the RCAHMS database. A hut circle exists approximately 370m to the NW (NGR NR 3596 4618), remains of a longhouse exist NE of the site at NGR NR 3625 4595 and numerous listed buildings exist along the south coast.
- 1.3.2 To the SE lies Crois Tigh Chargaman, The cross of Tighcargaman (NGR NR 3629 4580, HER 2138).

2 OBJECTIVES

- 2.1 The objectives of the archaeological evaluation were:
- i) to determine and assess the character, extent, condition, quality, date and significance of any buried archaeological remains within the proposed development area through evaluation trenching
 - ii) to advise and implement an appropriate form of mitigation, formulated with the approval of WOSAS, such as excavation (Phase 2), post-excavation analyses and publication (Phase 3), given the infeasibility of preserving the archaeological material *in situ*, should significant archaeological remains be encountered
 - iii) to report on the results of the evaluation.

3 METHODOLOGY

- 3.1 The *Written Scheme of Investigation* proposed the excavation of trenches equating to a 10% sample of the development area (5 ha) thus requiring the excavation of trenching up to 2000 linear metres (AOC Archaeology 2015).
- 3.2 Due to a combination of existing ground conditions (including areas of marsh and out-croppings of bed-rock) and live service buffer zones the evaluation was restricted to a total of 822 linear metres.
- 3.3 All trenches were excavated with a 20 tonne excavator using a 2.0 m wide ditching bucket. The trench details are summarised in Appendix 1. Machine excavation was conducted in shallow units/spits through topsoil/overburden to the upper surface of the underlying geological deposits. The evaluation trial trenching was undertaken according to AOC Archaeology Group's standard operating procedures as detailed with the *Written Scheme of Investigation* (AOC 2015).

4 RESULTS

- 4.1 The various detailed data gathered from the evaluation is presented as a series of appendices:
- Appendix 1 trench summaries;
 - Appendix 2 context register;
 - Appendix 3 finds register
 - Appendix 4 photographic register
 - Appendix 5 '*Discovery and Excavation in Scotland*' (DES) entry.
- 4.2 Figure 2 identifies the position and orientations of all excavated trenches. The works were conducted between 13th and 17th April 2014. The weather conditions during the evaluation were favourable and overall archaeological visibility was good.
- 4.3 The development area was covered by an improved peaty top-soil varying in depth from 0.15 m to 0.30 m. The natural geology was mottled brown sandy clay with occasional patches of gravel. There were many areas where the natural bedrock was either exposed as a natural out-crop or was exposed by the evaluation trenching.
- 4.4 Occasional rubble land drains were present draining into the marshy southern part of the development area.
- 4.5 Within the northern part of the development lay a flattish area of land which contained the remains of a 19th century cottage. The evaluation of this area revealed 13 pit features of probable early prehistoric date. The pit features were found within three trenches located between the buffer zones associated with overhead power cables. This prevented a wider examination of the archaeology.
- 4.6 *Trench 9 [003-005-007-009-011-013-015-023-025-027]*
- 4.6.1 Ten associated pit and posthole features were recorded within Trench 9. With the exception of [015] these features were circular in plan and ranged from 0.28 m to 0.96 m in diameter. All of the pits appeared truncated with none of the excavated examples being deeper than 0.18 m. The features had short, steeply sloping sides and gently concave bases. The pits were all filled by similar charcoal rich deposits of dark grey/brown silty sand with inclusions of rounded stones. A flint blade of early prehistoric date was recovered from the fill (010) of Pit [009]. The pit [015] was oval in shape measuring 1.63 m by 1.06 m in plan and contained modern ceramics and glass. It is probable that this is a 19th century rubbish pit associated with the nearby cottage.



Plate 1: Features in Trench 9 prior to trench extension

4.7 *Trench 8 [017]*

- 4.7.1 The excavation of Trench 8 revealed a single sub-circular pit [017]. This feature was 0.72m by 0.78m and was 0.19m in depth. As with the features in Trench 9, the pit was gently concave in profile and filled by a charcoal rich deposit of dark grey sandy silt with numerous stone inclusions.



Plate 2: Post ex pits [009], [007], and [005] (left to right)

4.8 *Trench 14 [019-021]*

- 4.8.1 Two further truncated circular pit features were revealed in Trench 14. These features were again very similar in plan measuring 0.60m and 0.75m respectively. The excavation of [019] revealed the same gently concave profile with a charcoal rich dark grey sandy fill



Plate 3: NW facing section [017]



Plate 4: SW elevation of cottage

5 CONCLUSION

- 5.1 The majority of trenches contained no significant archaeological features. However, three closely grouped trenches excavated within the northern field contained archaeological remains in the form of thirteen large charcoal rich pits. These features most likely represent the truncated remains of early prehistoric occupation. The archaeological features lay between the buffer zones associated with overhead power cables. Given the topographical position of the recorded archaeology it is likely that further associated archaeological evidence will extend within these buffer zones.
- 5.2 Substantial archaeological remains of probable early prehistoric date were recorded within the northern part of the development area. These findings were relatively localised and did not extend into the southern portion of the development area which appeared archaeologically sterile. It is likely that further works would be deemed necessary if the area containing the archaeology was to be subject to development. This recommendation will require confirmation by WoSAS on behalf of Argyll and Bute Council.

7 REFERENCES

AOC 2015 *Whytefield, Port Ellen, Islay: Archaeological Evaluation Written Scheme of Investigation*. Unpublished Client Report.

Scottish Government 2010 *Scottish Planning Policy*.

Scottish Government 2011 *PAN 2/2011 Planning and Archaeology*.

Cinnimara, Port Ellen, Islay: Evaluation Data Structure Report

Section 2: Appendices

APPENDIX 1: Trench Register

Trench 1

<i>Dimensions</i>	53 m by 2.0 m
<i>Total Area</i>	106 m ²
<i>Orientation</i>	NNE-SSW
<i>Depth of Topsoil</i>	Between 0.1m and 0.3m
<i>Significant Features</i>	None
<i>Subsoil</i>	Mid orange/brown – grey sandy gravel with frequent small stones, pebbles and boulders
<i>Finds</i>	None

Trench 2

<i>Dimensions</i>	55 m by 2.0 m
<i>Total Area</i>	110 m ²
<i>Orientation</i>	NNE-SSW
<i>Depth of Topsoil</i>	Between 0.1 m and 0.5 m
<i>Significant Features</i>	None
<i>Subsoil</i>	Mid orange/brown – grey sandy gravel with frequent small stones, pebbles and boulders
<i>Finds</i>	None

Trench 3

<i>Dimensions</i>	40 m by 2.0 m
<i>Total Area</i>	80 m ²
<i>Orientation</i>	NW-SE
<i>Depth of Topsoil</i>	Between 0.1 m and 0.3 m
<i>Significant Features</i>	None
<i>Subsoil</i>	Mid orange/brown – grey sandy gravel with frequent small stones, pebbles and boulders
<i>Finds</i>	None

Trench 4

<i>Dimensions</i>	30 m by 2.0 m
<i>Total Area</i>	60 m ²
<i>Orientation</i>	NW-SE
<i>Depth of Topsoil</i>	Between 0.15 m and 0.3 m
<i>Significant Features</i>	None
<i>Subsoil</i>	Mid orange/brown – grey sandy gravel with frequent small stones, pebbles and boulders
<i>Finds</i>	None

Trench 5

<i>Dimensions</i>	50 m by 2.0 m
<i>Total Area</i>	100 m ²
<i>Orientation</i>	E-W
<i>Depth of Topsoil</i>	Between 0.1 m and 0.3 m
<i>Significant Features</i>	None
<i>Subsoil</i>	Mid orange/brown – grey sandy gravel with frequent small stones, pebbles and boulders
<i>Finds</i>	None

Trench 6

<i>Dimensions</i>	45 m by 2.0 m
<i>Total Area</i>	90 m ²
<i>Orientation</i>	N-S
<i>Depth of Topsoil</i>	Between 0.2 m and 0.4 m
<i>Significant Features</i>	None
<i>Subsoil</i>	Mid orange/brown – grey sandy gravel with frequent small stones, pebbles and boulders
<i>Finds</i>	None

Trench 7

<i>Dimensions</i>	50 m by 2.0 m
<i>Total Area</i>	100 m ²
<i>Orientation</i>	NE-SW
<i>Depth of Topsoil</i>	Between 0.15 m and 0.2 m
<i>Significant Features</i>	None
<i>Subsoil</i>	Mid orange/brown – grey sandy gravel with frequent small stones, pebbles and boulders
<i>Finds</i>	None

Trench 8

<i>Dimensions</i>	40 m by 2.0 m, plus extended by 5m by 4m
<i>Total Area</i>	100 m ²
<i>Orientation</i>	E-W
<i>Depth of Topsoil</i>	0.25m
<i>Significant Features</i>	Large plough furrow in East, pit in West
<i>Subsoil</i>	Mid orange/brown sandy gravel with frequent small to medium stones
<i>Finds</i>	None

Trench 9

<i>Dimensions</i>	65 m by 2.0 m, plus extended by 20m x 3m
<i>Total Area</i>	190 m ²
<i>Orientation</i>	E-W
<i>Depth of Topsoil</i>	0.25 m
<i>Significant Features</i>	Pits [003-005-007-009-011-013-015-023-025-027]
<i>Subsoil</i>	Mid orange/brown sandy gravel with frequent small to medium stones
<i>Finds</i>	None

Trench 10

<i>Dimensions</i>	44 m by 2.0 m
<i>Total Area</i>	88 m ²
<i>Orientation</i>	E-W
<i>Depth of Topsoil</i>	Between 0.3m and 0.5m
<i>Significant Features</i>	None
<i>Subsoil</i>	Mid orange/brown sandy gravel with frequent small to medium stones
<i>Finds</i>	None

Trench 11

<i>Dimensions</i>	50 m by 2.0 m
<i>Total Area</i>	100 m ²
<i>Orientation</i>	E-W
<i>Depth of Topsoil</i>	0.4m
<i>Significant Features</i>	None
<i>Subsoil</i>	Mid orange/brown sandy gravel with frequent small to medium stones
<i>Finds</i>	None

Trench 12

<i>Dimensions</i>	72 m by 2.0 m
<i>Total Area</i>	144 m ²
<i>Orientation</i>	N-S
<i>Depth of Topsoil</i>	Between 0.2m and 0.3m
<i>Significant Features</i>	Two post medieval postholes 8m from S
<i>Subsoil</i>	Mid orange/brown sandy gravel with frequent small to medium stones
<i>Finds</i>	None

Trench 13

<i>Dimensions</i>	55 m by 2.0 m
<i>Total Area</i>	110 m ²
<i>Orientation</i>	NE-SW
<i>Depth of Topsoil</i>	Between 0.3 m and 0.45 m
<i>Significant Features</i>	Rubble drain aligned NE-SW at 4 m, Geotech pit at 39 m and furrows aligned NE-SW at 25 m, 32 m and 41 m
<i>Subsoil</i>	Mid orange/brown sandy gravel with frequent small to medium stones
<i>Finds</i>	None

Trench 14

<i>Dimensions</i>	30 m by 2.0 m
<i>Total Area</i>	100 m ²
<i>Orientation</i>	E-W
<i>Depth of Topsoil</i>	Between 0.25m and 0.3m
<i>Significant Features</i>	Pits [019-021] 6m and 18 m and drainage ditch aligned NE-SW 21 m from West
<i>Subsoil</i>	Mid orange/brown sandy gravel with frequent small to medium stones
<i>Finds</i>	None

Trench 15

<i>Dimensions</i>	58 m by 2.0 m
<i>Total Area</i>	116 m ²
<i>Orientation</i>	NE-SW
<i>Depth of Topsoil</i>	Between 0.15m and 0.4m
<i>Significant Features</i>	Drains running NW-SE
<i>Subsoil</i>	Mid orange/brown sandy gravel with frequent small to medium stones
<i>Finds</i>	None

Trench 16

<i>Dimensions</i>	20 m by 2.0 m
<i>Total Area</i>	40 m ²
<i>Orientation</i>	N-S
<i>Depth of Topsoil</i>	Between 0.3m and 0.4m
<i>Significant Features</i>	None
<i>Subsoil</i>	Mid orange/brown – grey sandy gravel with frequent small stones, pebbles and boulders
<i>Finds</i>	None

Trench 17

<i>Dimensions</i>	20 m by 2.0 m
<i>Total Area</i>	40 m ²
<i>Orientation</i>	NW-SE
<i>Depth of Topsoil</i>	Between 0.4m and 0.5 m
<i>Significant Features</i>	None
<i>Subsoil</i>	Mid orange/brown – grey sandy gravel with frequent small stones, pebbles and boulders
<i>Finds</i>	None

Trench 18

<i>Dimensions</i>	75 m by 2.0 m
<i>Total Area</i>	150 m ²
<i>Orientation</i>	NW-SE
<i>Depth of Topsoil</i>	Between 0.2 m and 0.3 m
<i>Significant Features</i>	None
<i>Subsoil</i>	Mid orange/brown sandy gravel with frequent small to medium stones
<i>Finds</i>	None

APPENDIX 2: Photographic Register

Digital Film

Frame	Trench	Description	From
1-7	-	Plant arrival onsite	Various
8-10	Tr.1	Start Trench 1	Various
11-12	-	Site general shots	Various
13-14	Tr.1	Rock exposed trench 1	Various
15	Tr.1	End trench 1	S
16	-	General Shot	S
17-18	Tr.2	Trench 2 working shots	Various
19-21	Tr.2	End Trench 2	Various
22-23	-	Rocky Outcrops	Various
24	-	Site general shots	Various
25-26	Tr.3	General trench 3 shots	Various
27-28	Tr.3	Rubble drain trench 3	Various
29-32	-	Obstacles – gorse, boulders etc	Various
33-35	Tr.5	Start trench 5	Various
36	Tr.5	End trench 5	SE
37-40	-	Gorse height	Various
41-43	Tr.6	Trench 6 working shots	Various
44-45	-	Working shots	Various
46	Tr.7	Bedrock trench 7	W
47	Tr.7	End trench 7	W
48	Tr.7	End trench 7	S
49	-	Boulder	-
50	-	Boulder and gorse	-
51	Tr.8	Start trench 8	E
52	-	Small building onsite	SW
53	-	Rocky outcrop and overheads	N
54-56	Tr.9	Features in trench 9	Various
57	Tr.11	Commencing trench 11 showing buffer	NW
58	Tr.8	Trench 8 end	SE
59	Tr.9	Trench 9 end	SE
60	Tr.10	Trench 10 end	NW
61	Tr.11	Start trench 11	NW
62-66	-	Site general pre ex	Various
67-68	Tr.14	Features in trench 14	Various

69	Tr.11	Trench 11 end	NW
70	Tr.12	Trench 12 end	S
71	Tr.13	Trench 13 end	SE
72	Tr.15	Trench 15 end	SW
73	Tr.14	Trench 14 end	SW
74-76	Tr.9	Extending trench 9	SE
77-78	Tr.9	Features in trench 9	SW
79-80	Tr.8	Possible ring ditch in trench 8	Various
81	Tr.8	Ring ditch – plough furrow	SE
82-83	Tr.9	Features in trench 9	SE
84	Tr.16	End trench 16	E
85	Tr.17	End trench 17	N
86-88	-	Bogged digger in soft area	Various
89	-	Crag	NW
90-93	-	Panoramic from top of crag looking N-SW	Various
94	-	Fenced off area	SW
95-97	-	Large bedrock/crag/trees	Various
98	Tr.18	End trench 18	N
99-100	Tr.12	Post ex post med posthole	Various
101-102	Tr.13	Furrow in trench 13	Various
103-105	Tr.13	Post ex geotech pit	Various
106-107	Tr.14	Post ex [019]	SW
108	Tr.8	Pre ex [017]	SW
109	Tr.8	NE facing section [017]	NE
110-111	Tr.9	Pre ex features in trench 9	SE
112	Tr.9	Possible feature	S
113	Tr.9	Possible feature	S
114	Tr.9	SW facing section [009]	SW
115-116	Tr.9	Post ex [009]	Various
117	Tr.9	SW facing section [009]	SW
118-119	Tr.9	SW facing section [005]	SW
120	Tr.9	Post ex [005]	NW
121	Tr.9	Working shot of excavation	SW
122	Tr.9	Pre ex [027]	E
123	Tr.9	SW facing section [013]	SW
124	Tr.9	Post ex [013] pre ex [015]	SW
125	Tr.9	SW facing section [013]	SW

126	Tr.9	Post ex [023]	NW
127	Tr.9	SW facing section [005]	SW
128-129	Tr.9	General plan view shots	Various
130	Tr.9	Post med artefacts in furrow	NW
131-134	-	Site general shots	Various
135	-	SE elevation cottage	SE
136	-	Cottage from South	S
137	-	SW elevation cottage	SW
138	-	NW elevation cottage	NW
139	-	Close up of window NW side of cottage	NW
140	-	Cottage interior	ENE
141	-	Rubbish and rock heap	SW
142	-	NE elevation cottage	NE
143	-	Close up NE elevation of cottage – door	NE
144-155	-	Site end of job shots	Various

APPENDIX 3: Context Register

Context	Trench	Context Type	Description
001	All	Deposit	Mid to dark brown sandy silt with inclusions of small to large/boulder size stones, in top field boulders infrequent
002	All	Deposit	Mid orange/brown sandy gravel with frequent small to medium stones, in lower field frequent patches of grey sandy clay and frequent boulders.
003	Tr.9	Cut of pit	Sub circular in plan, 0.58m x 0.58m
004	Tr.9	Fill of [003]	Dark grey brown sandy silt with 2 large stones and flecks of charcoal
005	Tr.9	Cut of pit	Sub circular in plan, 0.8m x 0.8m x 0.13m deep, shallow, concave sloping sides
006	Tr.9	Fill of [005]	Dark grey brown sandy silt with around 15% charcoal at base and bright orange soil mixed throughout with inclusions of small stones and rootlets
007	Tr.9	Cut of pit	Sub circular in plan, 0.75m x 0.73m x 0.18m deep
008	Tr.9	Fill of [007]	Dark grey brown sandy silt with around 30% charcoal at base with inclusions of small stones and rootlets. Likely disturbed by later ploughing at south end.
009	Tr.9	Cut of pit	Sub circular in plan, 0.96m x 0.96m x 0.16m, sloping sides and concave base
010	Tr.9	Fill of [009]	Dark grey/brown sandy silt with inclusions of 30-40% charcoal and occasional small sub-rounded stones. Contains flint blade (SF 1).
011	Tr.9	Cut of pit	Sub circular in plan, 0.48m x 0.48m
012	Tr.9	Fill of [011]	Dark grey brown silty sand with charcoal and small to medium stones
013	Tr.9	Cut of pit	Sub circular in plan, 0.8m x 0.8m x 0.18m, sloping sides and concave base
014	Tr.9	Fill of [013]	Dark grey brown sandy silt with 30-40% charcoal inclusions around base and sides, some throughout and occasional small to medium stones
015	Tr.9	Cut of pit	Sub oval in plan, 1.63m x 1.06m
016	Tr. 9	Fill of [015]	Dark grey/mid brown silty sand with medium stones and modern ceramic and glass
017	Tr.8	Cut of pit	Sub circular in plan, 0.72m x 0.78m x 0.19m deep, disturbed by ploughing hitting large stones on NNW side
018	Tr.8	Fill of [017]	Dark grey sandy silt with inclusions of small to large sub-rounded and angular stones and 20% charcoal concentrated at base and sides. Loose compaction at top, friable at base.
019	Tr.14	Cut of pit	Sub circular in plan 0.6m x 0.6m x 0.09m deep, shallow concave profile
020	Tr.14	Fill of [019]	Dark grey brown silty sand, friable in compaction, inclusions of small pebbles and 15-20% charcoal
021	Tr.14	Cut of pit	Sub circular in plan, 0.75m x 0.75m
022	Tr.14	Fill of [021]	Mid grey/brown silty sand with small stones
023	Tr.9	Cut of pit	Sub circular in plan, 0.5m x 0.49m x 0.11m deep
024	Tr.9	Fill of [023]	Mid to dark brown friable silty sand with small stones and charcoal flecks. Compacted stones at base.
025	Tr.9	Cut of pit	Sub oval in plan, 0.28m x 0.38m
026	Tr.9	Fill of [025]	Dark grey brown sandy silt with inclusions of small stones and charcoal flecks
027	Tr.9	Cut of pit	Sub oval in plan, 0.8m x 0.45m x 0.1m deep
028	Tr.9	Fill of [027]	Dark grey brown sandy silt with inclusions of small stones and 2-3% charcoal. Friable to loose compaction.

APPENDIX 4: DRAWING REGISTER

Drawing No.	Details	Scale
1	Section [007]	1:10
2	Post ex plan [007]	1:20
3	Section [009]	1:10
4	Post ex plan [009]	1:20
5	Section [005]	1:10
6	Post ex plan [005]	1:20
7	Section [023]	1:10
8	Post ex plan [023]	1:20
9	Section [013]	1:10
10	Post ex plan [013]	1:20
11	Section [027]	1:10
12	Post ex plan [027]	1:20
13	Section [017]	1:10
14	Post ex plan [017]	1:20
15	Section [019]	1:10
16	Post ex plan [019]	1:20

APPENDIX 5: FINDS REGISTER

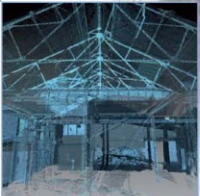
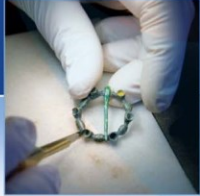
Find No.	Context No.	Description
1	[010]	1 x Flint blade

APPENDIX 6: SAMPLES REGISTER

Context No.	Quantity (litres)
[006]	20
[008]	20
[010]	30
[014]	20
[018]	10
[020]	10
[024]	10
[026]	10
[028]	10

APPENDIX 7: 'Discovery and Excavation in Scotland' (DES) Report

LOCAL AUTHORITY:	Argyll and Bute Council
PROJECT TITLE/SITE NAME	Whytefield, Port Ellen, Islay,
PROJECT CODE:	AOC23053
PARISH:	Kildalton
NAME OF CONTRIBUTOR:	Jessica Lumb
NAME OF ORGANISATION:	AOC Archaeology Group
TYPE(S) OF PROJECT:	Evaluation
NMRS NO(S)	None
SITE/MONUMENT TYPE(S):	None
SIGNIFICANT FINDS:	Pit features, Flint blade
NGR (2 letters, 6 figures)	NJ 6780 6421
START DATE (this season)	13/04/2015
END DATE (this season)	17/04/2015
PREVIOUS WORK (incl. DES ref.)	None
MAIN (NARRATIVE) DESCRIPTION: (May include information from other fields)	<p>This report presents the results of an archaeological evaluation undertaken by AOC Archaeology Group at Whytefield, Port Ellen, Islay (NGR: NR 36159 45858).</p> <p>The evaluation required the machine trenching of 2000 linear metres. However, existing ground conditions and live services restricted the evaluation to 822 linear metres.</p> <p>A localised distribution of thirteen pits was recorded providing evidence of early prehistoric occupation. A flint blade was recovered from the fill of one of the features.</p>
PROPOSED FUTURE WORK:	None
CAPTION(S) FOR ILLUSTRS:	None
SPONSOR OR FUNDING BODY:	Mr Alasdair Whyte
ADDRESS OF MAIN CONTRIBUTOR:	AOC Archaeology Group
EMAIL ADDRESS:	admin@aocarchaeology.com
ARCHIVE LOCATION (intended/deposited)	NMRS



AOC Archaeology Group, Edgefield Industrial Estate, Edgefield Road, Loanhead EH20 9SY
tel: 0131 440 3593 | fax: 0131 440 3422 | e-mail: admin@aocarchaeology.com

www.aocarchaeology.com