

# 77 Riccarton Mains Road, Currie, Edinburgh: Archaeological Evaluation Report

AOC Project 23058

21<sup>st</sup> May 2014



## 77 Riccarton Mains Road, Currie, Edinburgh: Archaeological Evaluation Report

On Behalf of:	CALA Homes (East) Ltd Cairnlee House Callendar Road Callendar Business Park Falkirk FK1 1XE
National Grid Reference (NGR):	NT 18115 8365
AOC Project No:	23058
Planning Ref:	15/00698/FUL
OASIS No:	211298
Prepared by:	Rob Engl
Illustration by:	Jamie Humble
Date of Fieldwork:	13 <sup>th</sup> – 14 <sup>th</sup> May 2015
Date of Report:	21 <sup>st</sup> May 2015

This document has been prepared in accordance with AOC standard operating procedures.

Author: Rob Engl Date: 14<sup>th</sup> May 2015

Approved by: Diana Sproat Date: 21<sup>st</sup> May 2015

Draft/Final Report Stage: Draft Date: 21<sup>st</sup> May 2015

**Enquiries to:** AOC Archaeology Group  
Edgefield Industrial Estate  
Edgefield Road  
Loanhead  
EH20 9SY

Tel. 0131 440 3593  
Fax. 0131 440 3422  
e-mail. [admin@aocarchaeology.com](mailto:admin@aocarchaeology.com)



[www.aocarchaeology.com](http://www.aocarchaeology.com)

## Contents

	Page
List of Figures.....	1
List of Plates .....	1
List of Appendices.....	1
Summary .....	2
1 INTRODUCTION .....	3
1.1 Site Background.....	3
1.2 Site Location .....	3
1.3 Archaeological background .....	3
2 OBJECTIVES.....	3
3 METHODOLOGY .....	4
4 RESULTS.....	4
5 CONCLUSIONS & RECOMMENDATIONS.....	4
6 REFERENCES.....	4
APPENDIX 1: Trench Descriptions .....	7
APPENDIX 2: Photographic Record.....	9
APPENDIX 3: ' <i>Discovery and Excavation in Scotland</i> ' Report .....	10

## List of Figures

Figure 1: Site Location plan

Figure 2: Site plan showing location of evaluation trenches

## List of Plates

Plate 1: General view of backfilled trenches showing central hollow

Plate 2: General view of Trench 2 (post-excavation) from north-east

## List of Appendices

Appendix 1: Trench Descriptions

Appendix 2: Photographic Record

Appendix 3: *'Discovery and Excavation in Scotland'* Report

## Summary

---

*This report presents the results of an archaeological evaluation undertaken by AOC Archaeology Group on behalf of Cala Homes (East) Ltd, on a land plot at 77 Riccarton Mains Drive, Balerno. The works were required as a condition of the planning consent for the development.*

*The evaluation consisted of the machine trenching of 800m<sup>2</sup>. A total of 1,030 m<sup>2</sup> was originally required, although the presence of several live services curtailed the area available for evaluation by approximately a third.*

*The proposed development was situated in an area of undulating, improved pasture and substantial colluvial deposits were encountered within the lower lying areas.*

*Neither significant archaeological features nor artefacts were encountered.*

## 1 INTRODUCTION

### 1.1 Site Background

- 1.1.1 AOC Archaeology Group was commissioned by Cala Homes (East) Ltd to carry out a programme of archaeological works prior to the construction of a 17 houses at 77 Riccarton Mains Road, Edinburgh (Planning Ref. No. 15/00698/FUL). The proposed development lies within the administrative area of the City of Edinburgh Council, which is advised on archaeological matters by the City of Edinburgh Council Archaeology Service (CECAS). The archaeological works were conducted in accordance with the principals set out in *Scottish Planning Policy* (2014) and *Planning & Archaeology* (2011) and in accordance with City of Edinburgh Council requirements as advised by CECAS.
- 1.1.2 The objective of the archaeological works was to determine the existence of any buried archaeological remains within the development area by means of a programme of trial trenching. A Written Scheme of Investigation (AOC 2014) outlining the entire programme of archaeological works was agreed with CECAS in advance of the evaluation being undertaken.

### 1.2 Site Location

- 1.2.1 The development area is triangular in plan and lies on the northern fringes of the suburb of Currie, and to the immediate western side of the Riccarton Mains Road, centred on NGR: NT 18115 83650 (Figure 1). To the south the site are the gardens of houses from Weaver's Knowe Crescent with an established bank of trees forming the north-west boundary of the development area. The site covers ca. 1.03 ha of undulating pasture field with a large central hollow running south-east/north-west across the area. The ground ranges between 112.0m to 117.0m OD in height.

### 1.3 Archaeological background

- 1.3.1 There are no known sites of archaeological interest within the development area identified in the National Monuments Record of Scotland. However, to the immediate north-west of the site there is a prehistoric enclosure called Whitelaw (NMRS No. NY16NE 194), whilst another enclosure lies to the west of the site at Currievale (NMRS No. NT16NE 59).
- 1.3.2 The mid-19<sup>th</sup> century First Edition Ordnance Survey map shows the development area to lie wholly within an established arable field. To the immediate north-east on Riccarton Mains Road lie a small cottage and garden as well as a small tributary leading to the Murray Burn to the north-west of the development area.

## 2 OBJECTIVES

- 2.1 The objectives of the archaeological evaluation were:
- i) to determine and assess the character, extent, condition, quality, date and significance of any buried archaeological remains within the proposed development area;
  - ii) to advise and implement an appropriate form of mitigation, such as, excavation, post-excavation analyses and publication given the infeasibility of preserving the archaeological material *in situ*, should significant archaeological remains be encountered.





### 3 METHODOLOGY

- 3.1 The archaeological evaluation was undertaken on 13<sup>th</sup> – 14<sup>th</sup> May 2015 using an excavator fitted with a 2.0m wide toothless ditching bucket. The 10% evaluation of the development area was originally required, which would have equated to a total evaluation area of 1,030m<sup>2</sup> (Figure 2). However, the presence of several live services reduced the area available for evaluation and thus the total evaluation area equated to 800 m<sup>2</sup>. The evaluation was undertaken in dry, clear conditions with good archaeological visibility. Trenches were recorded and subsequently backfilled and tracked-over by the machine.

### 4 RESULTS

- 4.1 A site plan showing the location of trenches can be found in Figure 2. The site was covered in a layer of a well-sorted improved top-soil, comprising a red brown clay rich sandy matrix. This topsoil varied in depth from c.0.20m to 0.30m and contained very little anthropic material with only very occasional fragments of white glazed ceramics or bottle glass. The subsoil consisted of orange sandy clay with numerous quantities of shattered sandstone and shale. Rubble drains were rarely encountered; natural drains appeared to run into the central hollow (Plate 1). A colluvial deposit of red brown sandy silt was encountered within the majority of the trenches (Plate 2). This deposit ranged from 0.10m to 0.40m in depth and was located within the lower areas of the undulating ground.
- 4.2 No significant archaeological features or artefacts were found during the evaluation. Archaeological material was restricted to occasional white ceramics and modern glass within the topsoil.

### 5 CONCLUSIONS & RECOMMENDATIONS

- 5.1 No significant archaeological finds or features were encountered and the area appears archaeologically sterile.
- 5.2 No further archaeological works are considered necessary. This recommendation will require confirmation by Mr Lawson of CECAS on behalf of City of Edinburgh Council.

### 6 REFERENCES

AOC Archaeology (2015) *77 Riccarton Mains Road, Currie, Edinburgh Archaeological Evaluation: Data Structure Report*. Unpublished Client Report.

Scottish Government 2014 *Scottish Planning Policy*.

Scottish Government 2011 *PAN 2/2011 Planning and Archaeology*.



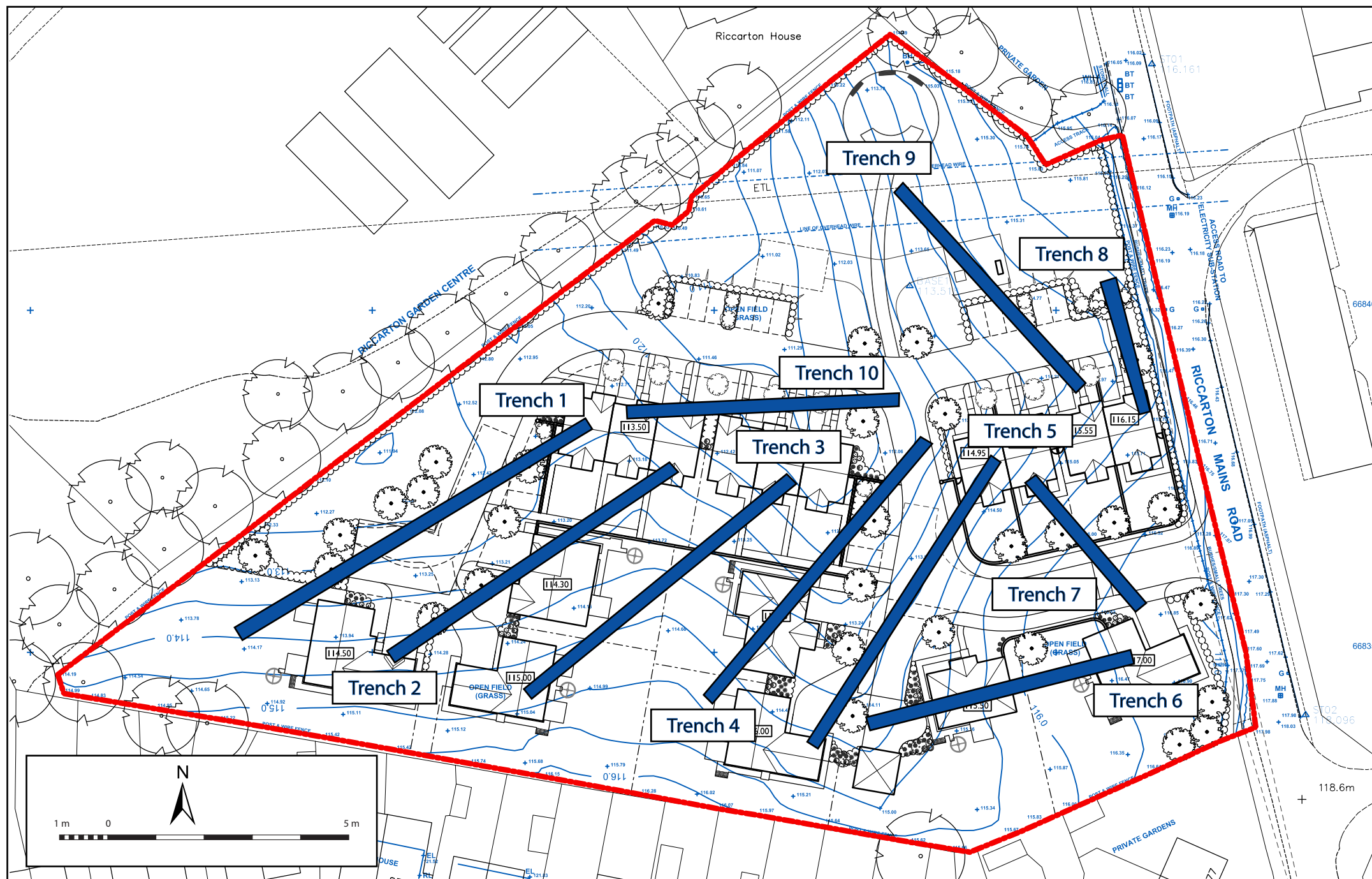


Figure 2: Site plan showing location of evaluation trenches



Plate 1: General view of the site (pre-excitation) showing the central hollow



Plate 2: General view (post-excitation) of Trench 2 from the north-east

---

**77 Riccarton Road, Currie, Edinburgh**  
**Archaeological Evaluation:**  
**Evaluation Report**

**Section 2: Appendices**

## APPENDIX 1: Trench Descriptions

### Trench 1

<i>Dimensions</i>	60 m by 2.0 m
<i>Orientation</i>	SW/NE
<i>Depth of Topsoil</i>	0.27 m to 0.35 m
<i>Depth of Colluvium</i>	0.10 m to 0.25 m
<i>Depth of Excavation</i>	0.32 m to 0.60 m
<i>Significant Features</i>	None
<i>Other Features</i>	Plastic drains at 1.0 m intervals NW/SE
<i>Subsoil</i>	Orange/brown sandy clay with shattered sub-angular sandstones.
<i>Finds</i>	Occasional white ceramics

### Trench 2

<i>Dimensions</i>	50 m by 2.0 m
<i>Orientation</i>	N/S
<i>Depth of Topsoil</i>	0.20 m to 0.30 m
<i>Depth of Colluvium</i>	0.10 m to 0.25 m
<i>Depth of Excavation</i>	0.25 m to 0.70 m
<i>Significant Features</i>	None
<i>Other Features</i>	Rubble drain at 15.0 m E/W
<i>Subsoil</i>	Orange/brown sandy clay with shattered sub-angular sandstones.
<i>Finds</i>	None

### Trench 3

<i>Dimensions</i>	50 m by 2.0 m
<i>Orientation</i>	SW/NE
<i>Depth of Topsoil</i>	0.20 m to 0.30 m
<i>Depth of Colluvium</i>	0.30 m
<i>Depth of Excavation</i>	0.40 m to 0.70 m
<i>Significant Features</i>	None
<i>Other Features</i>	None
<i>Subsoil</i>	Orange/brown sandy clay with shattered sub-angular sandstones/shale.
<i>Finds</i>	None

### Trench 4

<i>Dimensions</i>	50 m by 2.0 m
<i>Orientation</i>	SW/NE
<i>Depth of Topsoil</i>	0.30 m
<i>Depth of Colluvium</i>	0.10 m to 0.40 m
<i>Depth of Excavation</i>	0.30 m to 0.70 m
<i>Significant Features</i>	None
<i>Other Features</i>	Rubble drain at 0.0 m & 28.0 m N/S
<i>Subsoil</i>	Orange/brown sandy clay with shattered sub-angular sandstones.
<i>Finds</i>	None

### Trench 5

<i>Dimensions</i>	50 m by 2.0 m
<i>Orientation</i>	SW/NE
<i>Depth of Topsoil</i>	0.30 m
<i>Depth of Colluvium</i>	0.10 m to 0.40 m
<i>Depth of Excavation</i>	0.40 m to 0.70 m
<i>Significant Features</i>	None
<i>Other Features</i>	Rubble drain at 4.5 m N/S & 9.0 m E/W
<i>Subsoil</i>	Orange/brown sandy clay with shattered sub-angular sandstones.
<i>Finds</i>	None



**Trench 6**

<i>Dimensions</i>	40 m by 2.0 m
<i>Orientation</i>	W/E
<i>Depth of Topsoil</i>	0.30 m
<i>Depth of Colluvium</i>	0.10 m to 0.30 m
<i>Depth of Excavation</i>	0.50 m to 0.60 m
<i>Significant Features</i>	None
<i>Other Features</i>	Rubble drain at 7.0 m N/S
<i>Subsoil</i>	Orange/brown sandy clay with shattered sub-angular sandstones.
<i>Finds</i>	White ceramic and glass

**Trench 7**

<i>Dimensions</i>	25 m by 2.0 m
<i>Orientation</i>	SSE/NNW
<i>Depth of Topsoil</i>	0.30 m
<i>Depth of Colluvium</i>	None
<i>Depth of Excavation</i>	0.40 m
<i>Significant Features</i>	None
<i>Other Features</i>	None
<i>Subsoil</i>	Orange/brown sandy clay with shattered sub-angular sandstones.
<i>Finds</i>	None

**Trench 8**

<i>Dimensions</i>	20 m by 2.0 m
<i>Orientation</i>	S/N
<i>Depth of Topsoil</i>	0.30 m
<i>Depth of Colluvium</i>	0.10 m to 0.40 m
<i>Depth of Excavation</i>	0.30 m to 0.45 m
<i>Significant Features</i>	None
<i>Other Features</i>	None
<i>Subsoil</i>	Orange/brown sandy clay with shattered sub-angular sandstones.
<i>Finds</i>	None

**Trench 9**

<i>Dimensions</i>	40 m by 2.0 m
<i>Orientation</i>	SE/NW
<i>Depth of Topsoil</i>	0.30 m
<i>Depth of Colluvium</i>	0.10 m to 0.30 m
<i>Depth of Excavation</i>	0.40 m to 0.60 m
<i>Significant Features</i>	None
<i>Other Features</i>	None
<i>Subsoil</i>	Orange/brown sandy clay with shattered sub-angular sandstones/shale.
<i>Finds</i>	None

**Trench 10**

<i>Dimensions</i>	40 m by 2.0 m
<i>Orientation</i>	NE/SW
<i>Depth of Topsoil</i>	0.30 m
<i>Depth of Colluvium</i>	None
<i>Depth of Excavation</i>	0.30 m to 0.60 m
<i>Significant Features</i>	None
<i>Other Features</i>	None
<i>Subsoil</i>	Orange/brown sandy clay with shattered sub-angular sandstones.
<i>Finds</i>	None

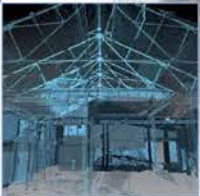
## APPENDIX 2: Photographic Record

Frame	Trench	Description	From
1	-	Registration shot	-
2-3	-	General view pre-excavation (north end of area)	SE
4-5	-	General view pre-excavation (north end of area)	SE
6	Tr.1	Trench 1 Post-Ex	SW
7	Tr.2	Trench 2 Post-Ex	SW
8	Tr.3	Trench 3 Post Ex	SW
9	Tr.4	Trench 4 Post-Ex	SW
10	Tr.5	Trench 5 Post-Ex	SW
11	Tr.6	Trench 6 Post-Ex	E
12	Tr.7	Trench 7 Post-Ex	NNE
13	Tr.8	Trench 8 Post-Ex	S
14	Tr.9	Trench 9 Post-Ex	NW
15	Tr.10	Trench 10 Post-Ex	SW
16	-	Shot of backfilled trenches showing central hollow	NE



**APPENDIX 3: 'Discovery and Excavation in Scotland' Report**

<b>LOCAL AUTHORITY:</b>	City of Edinburgh Council
<b>PROJECT TITLE/SITE NAME</b>	77 Riccarton Mains Road, Currie, Edinburgh
<b>PROJECT CODE:</b>	AOC 23058
<b>PARISH:</b>	Currie
<b>NAME OF CONTRIBUTOR:</b>	Rob Engl
<b>NAME OF ORGANISATION:</b>	AOC Archaeology Group
<b>TYPE(S) OF PROJECT:</b>	Archaeological Evaluation
<b>NMRS NO(S)</b>	None
<b>SITE/MONUMENT TYPE(S):</b>	None
<b>SIGNIFICANT FINDS:</b>	None
<b>NGR (2 letters, 6 figures)</b>	NT 18115 8365
<b>START DATE (this season)</b>	13/5/2015
<b>END DATE (this season)</b>	14/5/2015
<b>PREVIOUS WORK (incl. DES ref.)</b>	None
<b>MAIN (NARRATIVE) DESCRIPTION:</b> (May include information from other fields)	An archaeological evaluation was undertaken by AOC Archaeology Group on behalf of Cala Homes (East) Ltd, on a land plot at 77 Riccarton Mains Drive, Currie. The archaeological evaluation consisted of the machine trenching of 800 m <sup>2</sup> . A total of 1,030m <sup>2</sup> was originally required, although the presence of several live services curtailed the area available for evaluation by approximately a third. The proposed development was situated in an area of undulating, improved pasture. Substantial colluvial deposits were encountered within the lower lying areas. Neither significant archaeological features nor artefacts were encountered.
<b>PROPOSED FUTURE WORK:</b>	None
<b>CAPTION(S) FOR ILLUSTRS:</b>	None
<b>SPONSOR OR FUNDING BODY:</b>	Cala Homes Ltd (East)
<b>ADDRESS OF MAIN CONTRIBUTOR:</b>	AOC Archaeology Group
<b>EMAIL ADDRESS:</b>	Admin@aocarchaeology.com
<b>ARCHIVE LOCATION</b> (intended/deposited)	NMRS



**AOC Archaeology Group**, Edgefield Industrial Estate, Edgefield Road, Loanhead EH20 9SY  
tel: 0131 440 3593 | fax: 0131 440 3422 | e-mail: [admin@aocarchaeology.com](mailto:admin@aocarchaeology.com)

[www.aocarchaeology.com](http://www.aocarchaeology.com)