

# Sharphill, Saltcoats, North Ayrshire: Archaeological Evaluation Data Structure Report

AOC Project 23319  
29<sup>th</sup> January 2016



# Sharphill, Saltcoats, North Ayrshire: Archaeological Evaluation Data Structure Report

**On Behalf of:** Land Partners (Scotland) Ltd  
Estates Office  
The APL Centre  
Stevenston Industrial Estate  
Stevenston  
KA20 3LR

**National Grid Reference (NGR):** NS 25202 43435

**OASIS No:** 241122

**AOC Project No:** 23319

**Prepared by:** Kevin Paton

**Date of Fieldwork:** 25<sup>th</sup> to 29<sup>th</sup> January 2016

**Date of Report:** 29<sup>th</sup> January 2016

This document has been prepared in accordance with AOC standard operating procedures.

**Author:** Kevin Paton

**Date:** 29<sup>th</sup> January 2016

**Approved by:** Martin Cook

**Date:** 2<sup>nd</sup> February 2016

**Draft/Final Report Stage:** Draft

**Date:** 2<sup>nd</sup> February 2016

**Enquiries to:** AOC Archaeology Group  
Edgefield Industrial Estate  
Edgefield Road  
Loanhead  
EH20 9SY

Tel. 0131 440 3593  
Fax. 0131 440 3422  
e-mail. [admin@aocarchaeology.com](mailto:admin@aocarchaeology.com)



## Contents

	<b>Page</b>
<b>List of Illustrations</b> .....	<b>3</b>
<b>List of Plates</b> .....	<b>3</b>
<b>List of Appendices</b> .....	<b>3</b>
<b>Abstract</b> .....	<b>4</b>
<b>1 INTRODUCTION</b> .....	<b>5</b>
1.1 Background .....	5
1.2 Location.....	5
1.3 Archaeological Background.....	5
<b>2 OBJECTIVES</b> .....	<b>5</b>
<b>3 METHODOLOGY</b> .....	<b>6</b>
<b>4 RESULTS</b> .....	<b>6</b>
<b>5 CONCLUSION AND RECOMMENDATIONS</b> .....	<b>7</b>
<b>6 REFERENCES</b> .....	<b>7</b>
<b>APPENDIX 1: Trench Descriptions</b> .....	<b>9</b>
<b>APPENDIX 2: Photographic Register</b> .....	<b>17</b>
<b>APPENDIX 3: ‘Discovery and Excavation in Scotland’ Report</b> .....	<b>18</b>

## List of Illustrations

- Figure 1 Site location  
Figure 2 Evaluation trench locations

## List of Plates

- Plate 1 Post excavation view of Trench 7

## List of Appendices

- Appendix 1 Trench Descriptions  
Appendix 2 Photographic Record  
Appendix 3 '*Discovery and Excavation in Scotland*' Report

## Abstract

---

This report presents the results of an archaeological evaluation undertaken in relation to a residential development on land to the immediate W of Sharphill Industrial Estate, Saltcoats, North Ayrshire.

The evaluation required an 8% trenching sample of the Phase 2 development area. The evaluation trenches demonstrated that the Phase 2 site is archaeologically sterile with no archaeological features or artefacts encountered.

No further archaeological works are required in this part of the development area. This recommendation will require the approval of the West of Scotland Archaeology Service (WoSAS).

## 1 INTRODUCTION

### 1.1 Background

1.1.1 AOC Archaeology Group was commissioned by Land Partners (Scotland) Ltd. to undertake an archaeological evaluation of a residential development on land to the W of Sharphill Industrial Estate, Saltcoats, North Ayrshire. The evaluation was undertaken in order to satisfy the requirements of the local planning authority, North Ayrshire Council, who are advised on archaeological matters by the West of Scotland Archaeology Service (WoSAS). The works were conducted according to the terms of a *Written Scheme of Investigation* (AOC 2016) approved by WoSAS on behalf of North Ayrshire Council and in accordance with the principles set out in *Scottish Planning Policy* (Scottish Government 2014) and *PAN 2/2011 Planning & Archaeology* (Scottish Government 2011).

### 1.2 Location

1.2.1 The development area is located at the northern edge of Saltcoats with the residential developments of Barga Gardens and Meikelaught Place to the immediate S (centred on NGR: NS 25202 43435; Figure 1). The site is bounded to the W by open fields, the housing estate of Windmill Wynd and the Sharphill Industrial Estate to the E, with the A78 to the N. The area is currently used as part of a larger agricultural field system.

### 1.3 Archaeological Background

1.3.1 AOC undertook an evaluation of the land immediately to the south of the Sharphill Industrial Estate in 2007, in advance of the construction of the Wyndmill Wynd housing estate. No archaeological remains or pre-post medieval artefacts were recovered, the only material recovered being 19<sup>th</sup> and 20<sup>th</sup> century pottery contained within the topsoil, which may have been dumped from a neighbouring development (Dunbar 2007).

1.3.2 The NMRS records the discovery of a '*possible battle axe*', an unfinished granite hammerhead axe at Middlepart in 1887. The precise location of this discovery is unknown although Middlepart refers to a farmstead on the opposite eastern side of the B174 to the proposed development (NS24SE 5).

1.3.3 A 1994 desk-based assessment undertaken in advance of the construction of the A78 bypass identified a quarry scoop (NT 24SE 54) at the southern edge of the proposed development, immediately west of Windmill Wynd. It is unclear from the NMRS entry whether the scoop was recorded on the ground during a walkover survey or identified on aerial photographic or cartographic sources.

1.3.4 Two groups of cropmarks were identified during the 1994 A78 DBA, the first group north of the proposed development at Sharphill (NS24 SE 55) included feint rectangular marks, the second group at Sorbie (NS24 SW 61) consisted of two parallel linears and a single annular cropmark.

## 2 OBJECTIVES

2.1 The objectives of the archaeological evaluation were:

- i) to determine the character, extent, condition, quality, date and significance of any sub-surface archaeological remains within the Phase 2 development area;
- ii) to prepare a mitigation strategy compliant with *Scottish Planning Policy* (Scottish Government 2014) and *PAN 2/2011 Planning & Archaeology* (Scottish Government 2011) if archaeological remains are revealed.

### 3 METHODOLOGY

- 3.1 The evaluation required an 8% sample of the 4.39 hectare Phase 2 development area, which would equate to 1756 linear metres of trench. Due to the presence of an overhead power cable along the W edge of the site, this total had to be reduced slightly to 1636 linear metres. The excavations were conducted by a 13 tonne tracked excavator utilising a bladed ditching bucket. Excavation was undertaken in shallow units/spits until the first significant archaeological horizon. All machine excavation was supervised by an experienced field archaeologist and according to AOC Archaeology Group's standard operating procedures, and as per the methodology within the *Written Scheme of Investigation* (AOC 2016).

### 4 RESULTS

- 4.1 The archaeological evaluation was undertaken between the 25<sup>th</sup> and 29<sup>th</sup> January 2016. In total, 1640 m<sup>2</sup> of linear trench was excavated on various alignments, with a small concentration situated on the top of a knoll where the aforementioned quarry scoop was located.
- 4.2 The soil make-up throughout the development area was very regular across the site with between 0.25 m and 0.36 m of mid brown clay loam topsoil overlying orangey brown and purplish grey boulder clays (Plate 1). Infrequent rubble drains were noted in some trenches that varied in alignment according to the sites natural undulations.
- 4.3 The quarry scoop noted in the NMRS record was photographed and its location noted but no trenches were excavated through it due to the presence of very large boulders visible on the surface (Plate 1).
- 4.4 No archaeological features or artefacts were revealed within any of the trenches.



Plate 1 - Post excavation view of Trench 7

## 5 CONCLUSION AND RECOMMENDATIONS

- 5.1 From the results of the evaluation it can be concluded that the area is archaeologically sterile. No further archaeological works are deemed necessary within the Phase 2 development area. This recommendation will require the approval of WoSAS acting on behalf of North Ayrshire Council.

## 6 REFERENCES

AOC 2016 *Sharphill, Saltcoats, North Ayrshire: Archaeological Works Written Scheme of Investigation* Unpublished CGMS Consulting Ltd. project design

Scottish Government 2014 *Scottish Planning Policy*, 2014

Scottish Government 2011 *Planning And Archaeology 2/2011*



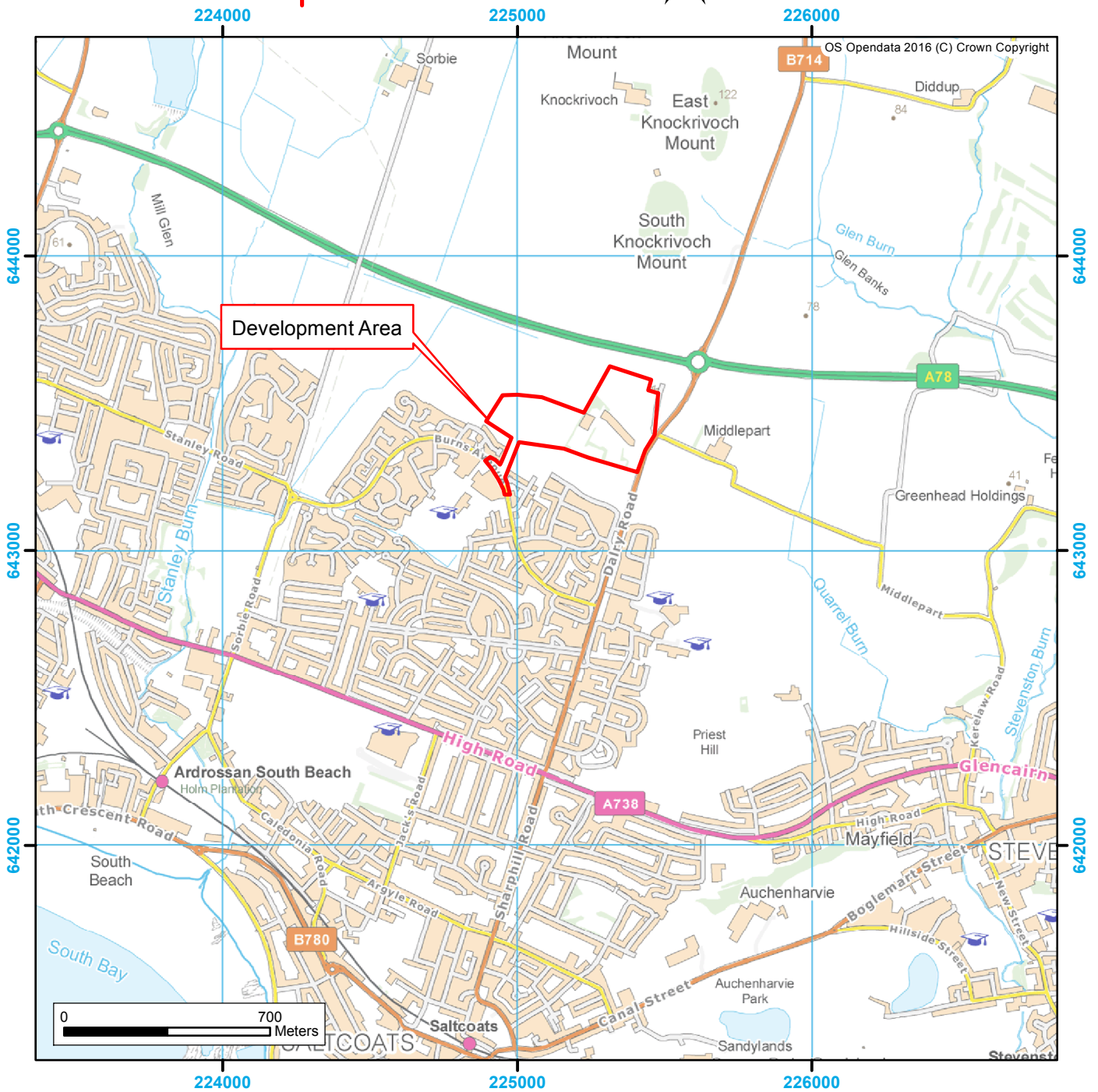
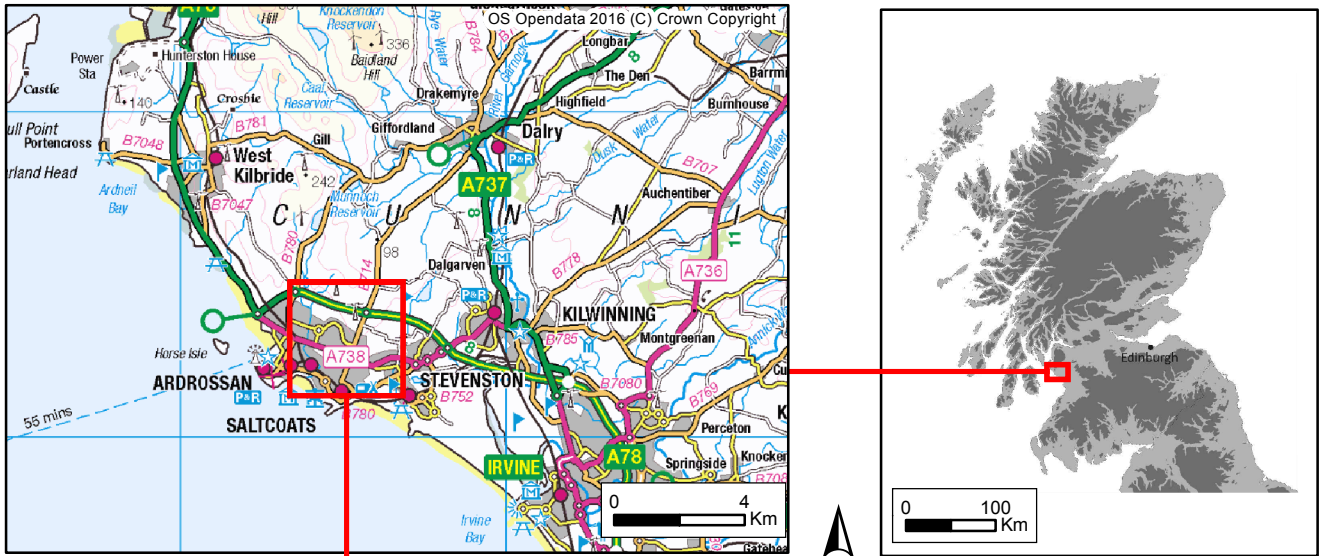


Figure 1: Site Location Plan

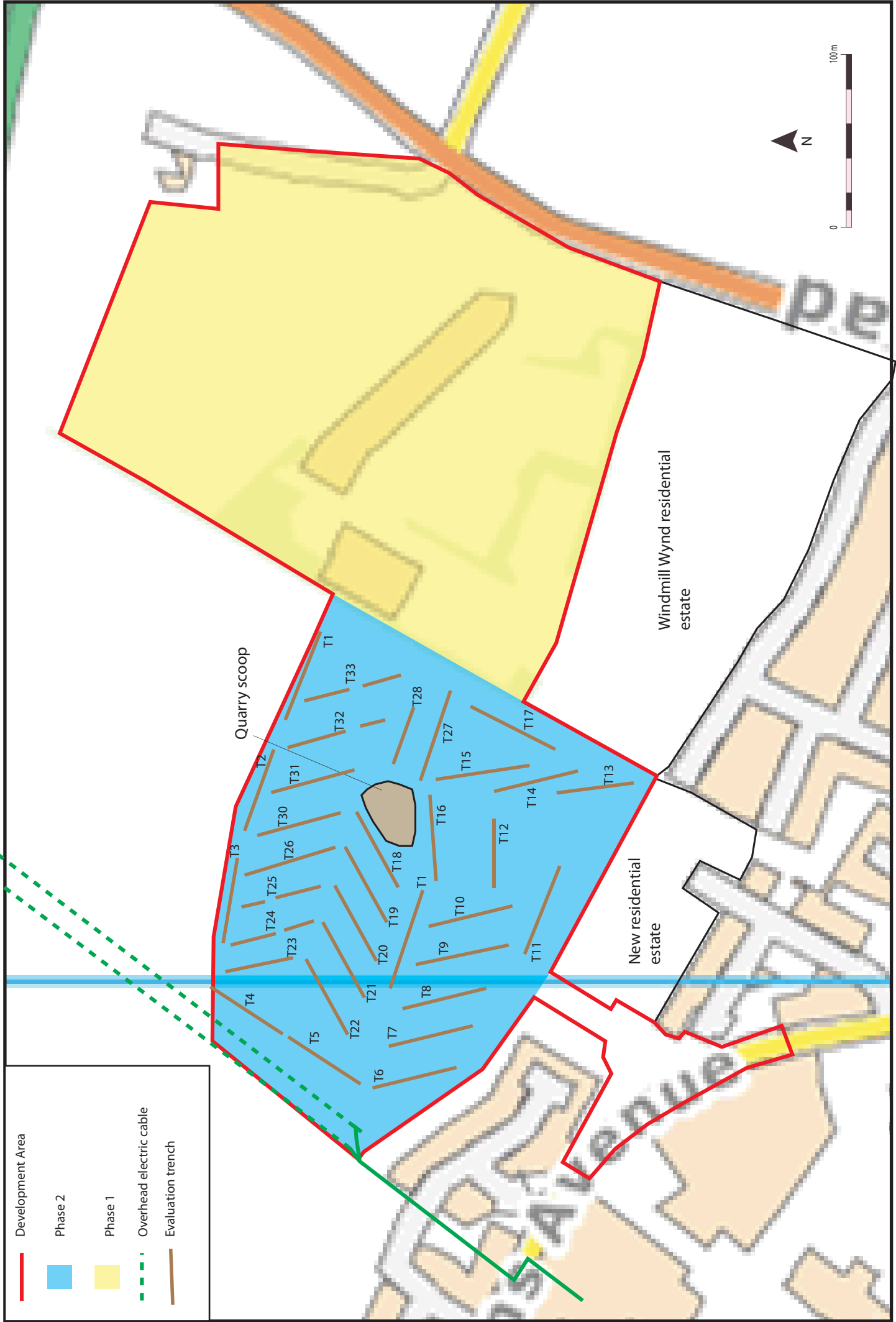


Figure 2 - Evaluation trench locations

# **Sharphill, Saltcoats, North Ayrshire: Archaeological Evaluation Data Structure Report**

## **Section 2: Appendices**

## APPENDIX 1: Trench Descriptions

### Trench 1

<i>Dimensions</i>	55 m by 2 m
<i>Total Area</i>	110 m <sup>2</sup>
<i>Excavated Orientation</i>	E to W
<i>Soil Make-up</i>	Topsoil – mid brown clay loam with occasional stone and coal fleck inclusions. Contains a few fragments of 19 <sup>th</sup> and 20 <sup>th</sup> century white ceramic – max depth 0.36 m
<i>Significant Features</i>	None
<i>Other Features</i>	None
<i>Natural Subsoil</i>	Mixture of orangey brown clay with frequent small to medium stones and areas of purple grey boulder clay
<i>Finds</i>	None

### Trench 2

<i>Dimensions</i>	50 m by 2 m
<i>Total Area</i>	100 m <sup>2</sup>
<i>Excavated Orientation</i>	E to W
<i>Soil Make-up</i>	Topsoil – mid brown clay loam with occasional stone and coal fleck inclusions. Contains a few fragments of 19 <sup>th</sup> and 20 <sup>th</sup> century white ceramic – max depth 0.34 m
<i>Significant Features</i>	None
<i>Other Features</i>	Rubble drain at 1.4 m aligned N-S
<i>Natural Subsoil</i>	Mixture of orangey brown clay with frequent small to medium stones and areas of purple grey boulder clay
<i>Finds</i>	None

### Trench 3

<i>Dimensions</i>	50 m by 2 m
<i>Total Area</i>	100 m <sup>2</sup>
<i>Excavated Orientation</i>	ENE to WSW
<i>Soil Make-up</i>	Topsoil – mid brown clay loam with occasional stone and coal fleck inclusions. Contains a few fragments of 19 <sup>th</sup> and 20 <sup>th</sup> century white ceramic – max depth 0.34 m
<i>Significant Features</i>	None
<i>Other Features</i>	None
<i>Natural Subsoil</i>	Mixture of orangey brown clay with frequent small to medium stones and areas of purple grey boulder clay
<i>Finds</i>	None

### Trench 4

<i>Dimensions</i>	50 m by 2 m
<i>Total Area</i>	100 m <sup>2</sup>
<i>Excavated Orientation</i>	N to S
<i>Soil Make-up</i>	Topsoil – mid brown clay loam with occasional stone and coal fleck inclusions. Contains a few fragments of 19 <sup>th</sup> and 20 <sup>th</sup> century white ceramic – max depth 0.32 m
<i>Significant Features</i>	None
<i>Other Features</i>	None
<i>Natural Subsoil</i>	Mixture of orangey brown clay with frequent small to medium stones and areas of purple grey boulder clay
<i>Finds</i>	None

### Trench 5

<i>Dimensions</i>	50 m by 2 m
<i>Total Area</i>	100 m <sup>2</sup>
<i>Excavated Orientation</i>	N to S

<i>Soil Make-up</i>	Topsoil – mid brown clay loam with occasional stone and coal fleck inclusions. Contains a few fragments of 19 <sup>th</sup> and 20 <sup>th</sup> century white ceramic – max depth 0.32 m
<i>Significant Features</i>	None
<i>Other Features</i>	Rubble drain at 4 m aligned NE-SW
<i>Natural Subsoil</i>	Mixture of orangey brown clay with frequent small to medium stones and areas of purple grey boulder clay
<i>Finds</i>	None

**Trench 6**

<i>Dimensions</i>	50 m by 2 m
<i>Total Area</i>	100 m <sup>2</sup>
<i>Excavated Orientation</i>	NW to SE
<i>Soil Make-up</i>	Topsoil – mid brown clay loam with occasional stone and coal fleck inclusions. Contains a few fragments of 19 <sup>th</sup> and 20 <sup>th</sup> century white ceramic – max depth 0.36 m
<i>Significant Features</i>	None
<i>Other Features</i>	None
<i>Natural Subsoil</i>	Mixture of orangey brown clay with frequent small to medium stones and areas of purple grey boulder clay
<i>Finds</i>	None

**Trench 7**

<i>Dimensions</i>	50 m by 2 m
<i>Total Area</i>	100 m <sup>2</sup>
<i>Excavated Orientation</i>	NW to SE
<i>Soil Make-up</i>	Topsoil – mid brown clay loam with occasional stone and coal fleck inclusions. Contains a few fragments of 19 <sup>th</sup> and 20 <sup>th</sup> century white ceramic – max depth 0.32 m
<i>Significant Features</i>	None
<i>Other Features</i>	Rubble drain at 44 m aligned N-S
<i>Natural Subsoil</i>	Mixture of orangey brown clay with frequent small to medium stones and areas of purple grey boulder clay
<i>Finds</i>	None

**Trench 8**

<i>Dimensions</i>	50 m by 2 m
<i>Total Area</i>	100 m <sup>2</sup>
<i>Excavated Orientation</i>	NW to SE
<i>Soil Make-up</i>	Topsoil – mid brown clay loam with occasional stone and coal fleck inclusions. Contains a few fragments of 19 <sup>th</sup> and 20 <sup>th</sup> century white ceramic – max depth 0.31 m
<i>Significant Features</i>	None
<i>Other Features</i>	None
<i>Natural Subsoil</i>	Mixture of orangey brown clay with frequent small to medium stones and areas of purple grey boulder clay
<i>Finds</i>	None

**Trench 9**

<i>Dimensions</i>	55 m by 2 m
<i>Total Area</i>	110 m <sup>2</sup>
<i>Excavated Orientation</i>	NW to SE
<i>Soil Make-up</i>	Topsoil – mid brown clay loam with occasional stone and coal fleck inclusions. Contains a few fragments of 19 <sup>th</sup> and 20 <sup>th</sup> century white ceramic – max depth 0.32 m
<i>Significant Features</i>	None
<i>Other Features</i>	Rubble drains at 3.6 m and 15 m aligned NE-SW
<i>Natural Subsoil</i>	Mixture of orangey brown clay with frequent small to medium stones and areas of purple grey boulder clay

<i>Finds</i>	None
<b>Trench 10</b>	
<i>Dimensions</i>	50 m by 2 m
<i>Total Area</i>	100 m <sup>2</sup>
<i>Excavated Orientation</i>	NW to SE
<i>Soil Make-up</i>	Topsoil – mid brown clay loam with occasional stone and coal fleck inclusions. Contains a few fragments of 19 <sup>th</sup> and 20 <sup>th</sup> century white ceramic – max depth 0.33 m
<i>Significant Features</i>	None
<i>Other Features</i>	None
<i>Natural Subsoil</i>	Mixture of orangey brown clay with frequent small to medium stones and areas of purple grey boulder clay
<i>Finds</i>	None
<b>Trench 11</b>	
<i>Dimensions</i>	55 m by 2 m
<i>Total Area</i>	110 m <sup>2</sup>
<i>Excavated Orientation</i>	E to W
<i>Soil Make-up</i>	Topsoil – mid brown clay loam with occasional stone and coal fleck inclusions. Contains a few fragments of 19 <sup>th</sup> and 20 <sup>th</sup> century white ceramic – max depth 0.35 m
<i>Significant Features</i>	None
<i>Other Features</i>	Quarry fill to 6.8 m; Rubble drains at 14 m and 44 m aligned NW-SE
<i>Natural Subsoil</i>	Mixture of orangey brown clay with frequent small to medium stones and areas of purple grey boulder clay
<i>Finds</i>	None
<b>Trench 12</b>	
<i>Dimensions</i>	40 m by 2 m
<i>Total Area</i>	80 m <sup>2</sup>
<i>Excavated Orientation</i>	ENE to WSW
<i>Soil Make-up</i>	Topsoil – mid brown clay loam with occasional stone and coal fleck inclusions. Contains a few fragments of 19 <sup>th</sup> and 20 <sup>th</sup> century white ceramic – max depth 0.55 m
<i>Significant Features</i>	None
<i>Other Features</i>	None
<i>Natural Subsoil</i>	Mixture of orangey brown clay with frequent small to medium stones and areas of purple grey boulder clay
<i>Finds</i>	None
<b>Trench 13</b>	
<i>Dimensions</i>	45 m by 2 m
<i>Total Area</i>	90 m <sup>2</sup>
<i>Excavated Orientation</i>	E to W
<i>Soil Make-up</i>	Topsoil – mid brown clay loam with occasional stone and coal fleck inclusions. Contains a few fragments of 19 <sup>th</sup> and 20 <sup>th</sup> century white ceramic – max depth 0.36 m
<i>Significant Features</i>	None
<i>Other Features</i>	None
<i>Natural Subsoil</i>	Mixture of orangey brown clay with frequent small to medium stones and areas of purple grey boulder clay
<i>Finds</i>	None
<b>Trench 14</b>	
<i>Dimensions</i>	50 m by 2 m
<i>Total Area</i>	100 m <sup>2</sup>
<i>Excavated Orientation</i>	NW to SE

<i>Soil Make-up</i>	Topsoil – mid brown clay loam with occasional stone and coal fleck inclusions. Contains a few fragments of 19 <sup>th</sup> and 20 <sup>th</sup> century white ceramic – max depth 0.33 m
<i>Significant Features</i>	None
<i>Other Features</i>	None
<i>Natural Subsoil</i>	Mixture of orangey brown clay with frequent small to medium stones and areas of purple grey boulder clay
<i>Finds</i>	None

**Trench 15**

<i>Dimensions</i>	55 m by 2 m
<i>Total Area</i>	110 m <sup>2</sup>
<i>Excavated Orientation</i>	NW to SE
<i>Soil Make-up</i>	Topsoil – mid brown clay loam with occasional stone and coal fleck inclusions. Contains a few fragments of 19 <sup>th</sup> and 20 <sup>th</sup> century white ceramic – max depth 0.32 m
<i>Significant Features</i>	None
<i>Other Features</i>	None
<i>Natural Subsoil</i>	Mixture of orangey brown clay with frequent small to medium stones and areas of purple grey boulder clay
<i>Finds</i>	None

**Trench 16**

<i>Dimensions</i>	50 m by 2 m
<i>Total Area</i>	100 m <sup>2</sup>
<i>Excavated Orientation</i>	NE to SW
<i>Soil Make-up</i>	Topsoil – mid brown clay loam with occasional stone and coal fleck inclusions. Contains a few fragments of 19 <sup>th</sup> and 20 <sup>th</sup> century white ceramic – max depth 0.3 m
<i>Significant Features</i>	None
<i>Other Features</i>	Rubble drain at 10 m aligned N-S
<i>Natural Subsoil</i>	Mixture of orangey brown clay with frequent small to medium stones and areas of purple grey boulder clay
<i>Finds</i>	None

**Trench 17**

<i>Dimensions</i>	60 m by 2 m
<i>Total Area</i>	120 m <sup>2</sup>
<i>Excavated Orientation</i>	E to W
<i>Soil Make-up</i>	Topsoil – mid brown clay loam with occasional stone and coal fleck inclusions. Contains a few fragments of 19 <sup>th</sup> and 20 <sup>th</sup> century white ceramic – max depth 0.36 m
<i>Significant Features</i>	None
<i>Other Features</i>	Rubble drain at 19 m aligned N-S; at 38 m aligned NE-SW; Modern pit at 39 m to 43 m – filled with fine ash and modern ceramics.
<i>Natural Subsoil</i>	Mixture of orangey brown clay with frequent small to medium stones and areas of purple grey boulder clay
<i>Finds</i>	None

**Trench 18**

<i>Dimensions</i>	50 m by 2 m
<i>Total Area</i>	100 m <sup>2</sup>
<i>Excavated Orientation</i>	NE to SW
<i>Soil Make-up</i>	Topsoil – mid brown clay loam with occasional stone and coal fleck inclusions. Contains a few fragments of 19 <sup>th</sup> and 20 <sup>th</sup> century white ceramic – max depth 0.32 m
<i>Significant Features</i>	None
<i>Other Features</i>	None

<i>Natural Subsoil</i>	Mixture of orangey brown clay with frequent small to medium stones and areas of purple grey boulder clay
<i>Finds</i>	None
<b>Trench 19</b>	
<i>Dimensions</i>	50 m by 2 m
<i>Total Area</i>	100 m <sup>2</sup>
<i>Excavated Orientation</i>	NE to SW
<i>Soil Make-up</i>	Topsoil – mid brown clay loam with occasional stone and coal fleck inclusions. Contains a few fragments of 19 <sup>th</sup> and 20 <sup>th</sup> century white ceramic – max depth 0.31 m
<i>Significant Features</i>	None
<i>Other Features</i>	None
<i>Natural Subsoil</i>	Mixture of orangey brown clay with frequent small to medium stones and areas of purple grey boulder clay
<i>Finds</i>	None
<b>Trench 20</b>	
<i>Dimensions</i>	50 m by 2 m
<i>Total Area</i>	100 m <sup>2</sup>
<i>Excavated Orientation</i>	NE to SW
<i>Soil Make-up</i>	Topsoil – mid brown clay loam with occasional stone and coal fleck inclusions. Contains a few fragments of 19 <sup>th</sup> and 20 <sup>th</sup> century white ceramic – max depth 0.31 m
<i>Significant Features</i>	None
<i>Other Features</i>	None
<i>Natural Subsoil</i>	Mixture of orangey brown clay with frequent small to medium stones and areas of purple grey boulder clay
<i>Finds</i>	None
<b>Trench 21</b>	
<i>Dimensions</i>	50 m by 2 m
<i>Total Area</i>	100 m <sup>2</sup>
<i>Excavated Orientation</i>	NE to SW
<i>Soil Make-up</i>	Topsoil – mid brown clay loam with occasional stone and coal fleck inclusions. Contains a few fragments of 19 <sup>th</sup> and 20 <sup>th</sup> century white ceramic – max depth 0.3 m
<i>Significant Features</i>	None
<i>Other Features</i>	None
<i>Natural Subsoil</i>	Mixture of orangey brown clay with frequent small to medium stones and areas of purple grey boulder clay
<i>Finds</i>	None
<b>Trench 22</b>	
<i>Dimensions</i>	50 m by 2 m
<i>Total Area</i>	100 m <sup>2</sup>
<i>Excavated Orientation</i>	NE to SW
<i>Soil Make-up</i>	Topsoil – mid brown clay loam with occasional stone and coal fleck inclusions. Contains a few fragments of 19 <sup>th</sup> and 20 <sup>th</sup> century white ceramic – max depth 0.31 m
<i>Significant Features</i>	None
<i>Other Features</i>	None
<i>Natural Subsoil</i>	Mixture of orangey brown clay with frequent small to medium stones and areas of purple grey boulder clay
<i>Finds</i>	None
<b>Trench 23</b>	
<i>Dimensions</i>	40 m by 2 m



<i>Total Area</i>	80 m <sup>2</sup>
<i>Excavated Orientation</i>	NW to SE
<i>Soil Make-up</i>	Topsoil – mid brown clay loam with occasional stone and coal fleck inclusions. Contains a few fragments of 19 <sup>th</sup> and 20 <sup>th</sup> century white ceramic – max depth 0.3 m
<i>Significant Features</i>	None
<i>Other Features</i>	None
<i>Natural Subsoil</i>	Mixture of orangey brown clay with frequent small to medium stones and areas of purple grey boulder clay
<i>Finds</i>	None

**Trench 24**

<i>Dimensions</i>	45 m (27 m and 18 m) by 2 m (trench split to avoid running water)
<i>Total Area</i>	90 m <sup>2</sup>
<i>Excavated Orientation</i>	NW to SE
<i>Soil Make-up</i>	Topsoil – mid brown clay loam with occasional stone and coal fleck inclusions. Contains a few fragments of 19 <sup>th</sup> and 20 <sup>th</sup> century white ceramic – max depth 0.32 m
<i>Significant Features</i>	None
<i>Other Features</i>	None
<i>Natural Subsoil</i>	Mixture of orangey brown clay with frequent small to medium stones and areas of purple grey boulder clay
<i>Finds</i>	None

**Trench 25**

<i>Dimensions</i>	40 m (14 m and 26 m) by 2 m (trench split to avoid running water)
<i>Total Area</i>	80 m <sup>2</sup>
<i>Excavated Orientation</i>	NW to SE
<i>Soil Make-up</i>	Topsoil – mid brown clay loam with occasional stone and coal fleck inclusions. Contains a few fragments of 19 <sup>th</sup> and 20 <sup>th</sup> century white ceramic – max depth 0.33 m
<i>Significant Features</i>	None
<i>Other Features</i>	None
<i>Natural Subsoil</i>	Mixture of orangey brown clay with frequent small to medium stones and areas of purple grey boulder clay
<i>Finds</i>	None

**Trench 26**

<i>Dimensions</i>	55 m by 2 m
<i>Total Area</i>	110 m <sup>2</sup>
<i>Excavated Orientation</i>	NW to SE
<i>Soil Make-up</i>	Topsoil – mid brown clay loam with occasional stone and coal fleck inclusions. Contains a few fragments of 19 <sup>th</sup> and 20 <sup>th</sup> century white ceramic – max depth 0.36 m
<i>Significant Features</i>	None
<i>Other Features</i>	None
<i>Natural Subsoil</i>	Mixture of orangey brown clay with frequent small to medium stones and areas of purple grey boulder clay
<i>Finds</i>	None

**Trench 27**

<i>Dimensions</i>	55 m by 2 m
<i>Total Area</i>	110 m <sup>2</sup>
<i>Excavated Orientation</i>	S to N
<i>Soil Make-up</i>	Topsoil – mid brown clay loam with occasional stone and coal fleck inclusions. Contains a few fragments of 19 <sup>th</sup> and 20 <sup>th</sup> century white ceramic – max depth 0.31 m
<i>Significant Features</i>	None
<i>Other Features</i>	None

<i>Natural Subsoil</i>	Mixture of orangey brown clay with frequent small to medium stones and areas of purple grey boulder clay
<i>Finds</i>	None
<b>Trench 28</b>	
<i>Dimensions</i>	55 m by 2 m
<i>Total Area</i>	110 m <sup>2</sup>
<i>Excavated Orientation</i>	WNW to ESE
<i>Soil Make-up</i>	Topsoil – mid brown clay loam with occasional stone and coal fleck inclusions. Contains a few fragments of 19 <sup>th</sup> and 20 <sup>th</sup> century white ceramic – max depth 0.3 m
<i>Significant Features</i>	None
<i>Other Features</i>	None
<i>Natural Subsoil</i>	Mixture of orangey brown clay with frequent small to medium stones and areas of purple grey boulder clay
<i>Finds</i>	None
<b>Trench 29</b>	
<i>Dimensions</i>	35 m by 2 m
<i>Total Area</i>	70 m <sup>2</sup>
<i>Excavated Orientation</i>	WNW to ESE
<i>Soil Make-up</i>	Topsoil – mid brown clay loam with occasional stone and coal fleck inclusions. Contains a few fragments of 19 <sup>th</sup> and 20 <sup>th</sup> century white ceramic – max depth 0.31 m
<i>Significant Features</i>	None
<i>Other Features</i>	None
<i>Natural Subsoil</i>	Mixture of orangey brown clay with frequent small to medium stones and areas of purple grey boulder clay
<i>Finds</i>	None
<b>Trench 30</b>	
<i>Dimensions</i>	50 m by 2 m
<i>Total Area</i>	100 m <sup>2</sup>
<i>Excavated Orientation</i>	NW to SE
<i>Soil Make-up</i>	Topsoil – mid brown clay loam with occasional stone and coal fleck inclusions. Contains a few fragments of 19 <sup>th</sup> and 20 <sup>th</sup> century white ceramic – max depth 0.3 m
<i>Significant Features</i>	None
<i>Other Features</i>	Rubble drain at 43 m aligned N-S
<i>Natural Subsoil</i>	Mixture of orangey brown clay with frequent small to medium stones and areas of purple grey boulder clay
<i>Finds</i>	None
<b>Trench 31</b>	
<i>Dimensions</i>	50 m by 2 m
<i>Total Area</i>	100 m <sup>2</sup>
<i>Excavated Orientation</i>	NW to SE
<i>Soil Make-up</i>	Topsoil – mid brown clay loam with occasional stone and coal fleck inclusions. Contains a few fragments of 19 <sup>th</sup> and 20 <sup>th</sup> century white ceramic – max depth 0.32 m
<i>Significant Features</i>	None
<i>Other Features</i>	Rubble drain at 15 m aligned N-S
<i>Natural Subsoil</i>	Mixture of orangey brown clay with frequent small to medium stones and areas of purple grey boulder clay
<i>Finds</i>	None
<b>Trench 32</b>	
<i>Dimensions</i>	50 m (35 m and 15 m) by 2 m (trench split to avoid running water)

---

<i>Total Area</i>	100 m <sup>2</sup>
<i>Excavated Orientation</i>	NW to SE
<i>Soil Make-up</i>	Topsoil – mid brown clay loam with occasional stone and coal fleck inclusions. Contains a few fragments of 19 <sup>th</sup> and 20 <sup>th</sup> century white ceramic – max depth 0.3 m
<i>Significant Features</i>	None
<i>Other Features</i>	Rubble drain at 37 m aligned N-S
<i>Natural Subsoil</i>	Mixture of orangey brown clay with frequent small to medium stones and areas of purple grey boulder clay
<i>Finds</i>	None

**Trench 33**

<i>Dimensions</i>	50 m (27 m and 23 m) by 2 m (trench split to avoid running water)
<i>Total Area</i>	100 m <sup>2</sup>
<i>Excavated Orientation</i>	NW to SE
<i>Soil Make-up</i>	Topsoil – mid brown clay loam with occasional stone and coal fleck inclusions. Contains a few fragments of 19 <sup>th</sup> and 20 <sup>th</sup> century white ceramic – max depth 0.3 m
<i>Significant Features</i>	None
<i>Other Features</i>	Rubble drain at 25 m aligned N-S
<i>Natural Subsoil</i>	Mixture of orangey brown clay with frequent small to medium stones and areas of purple grey boulder clay
<i>Finds</i>	None

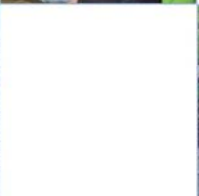
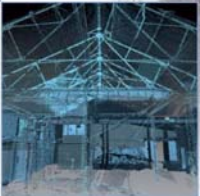
## APPENDIX 2: Photographic Register

### Digital Photographs

Frame	Description	From	Date
1-8	Panoramic views of evaluation area	Var	25/1/16
9	Post excavation view of T 1	W	25/1/16
10	Post excavation view of T 2	W	25/1/16
11	Post excavation view of T 3	WSW	25/1/16
12	Post excavation view of T 4	S	25/1/16
13	Post excavation view of T 5	S	25/1/16
14	Post excavation view of T 6	SE	25/1/16
15	Post excavation view of T 7	SE	25/1/16
16	Post excavation view of T 8	SE	25/1/16
17	Post excavation view of T 9	SE	25/1/16
18	Post excavation view of T 10	SE	25/1/16
19	Post excavation view of T 11	W	25/1/16
20	Post excavation view of T 12	WSW	25/1/16
21	Post excavation view of T 13	NW	25/1/16
22	Post excavation view of T 14	SE	26/1/16
23	Post excavation view of T 15	SE	26/1/16
24	Post excavation view of T 16	SW	26/1/16
25	Post excavation view of T 17	W	26/1/16
26-28	Views of quarry scoop	Var	26/1/16
29	Post excavation view of T 18	SW	26/1/16
30	Post excavation view of T 19	SW	26/1/16
31	Post excavation view of T 20	SW	26/1/16
32	Post excavation view of T 21	SW	26/1/16
33	Post excavation view of T 23	SE	26/1/16
34	Post excavation view of T 24	SE	26/1/16
35	Post excavation view of T 27	N	27/1/16
36	Post excavation view of T 28	ESE	27/1/16
37	Post excavation view of T 29	ESE	27/1/16
38	Post excavation view of T 30	SE	27/1/16
39	Post excavation view of T 31	SE	27/1/16
40	Post excavation view of T 32	SE	27/1/16
41	Post excavation view of T 33	SE	27/1/16
42-50	Panoramic views showing trenches	Var	27/1/16

**APPENDIX 3: 'Discovery and Excavation in Scotland' Report**

<b>LOCAL AUTHORITY:</b>	North Ayrshire Council
<b>PROJECT TITLE/SITE NAME</b>	Sharphill, Saltcoats, North Ayrshire
<b>PROJECT CODE:</b>	AOC 23319
<b>PARISH:</b>	Ardrossan
<b>NAME OF CONTRIBUTOR:</b>	Kevin Paton
<b>NAME OF ORGANISATION:</b>	AOC Archaeology Group
<b>TYPE(S) OF PROJECT:</b>	Archaeological Evaluation
<b>NMRS NO(S)</b>	N/A
<b>SITE/MONUMENT TYPE(S):</b>	N/A
<b>SIGNIFICANT FINDS:</b>	N/A
<b>NGR (2 letters, 6 figures)</b>	NS 25202 43435
<b>START DATE</b> (this season)	25 <sup>th</sup> January 2016
<b>END DATE</b> (this season)	29 <sup>th</sup> January 2016
<b>PREVIOUS WORK</b> (incl. DES ref.)	None
<b>MAIN (NARRATIVE) DESCRIPTION:</b> (May include information from other fields)	<p>An archaeological evaluation was undertaken by AOC Archaeology in relation to a residential development on land to the immediate W of Sharphill Industrial Estate, Saltcoats, North Ayrshire.</p> <p>The evaluation required an 8% trenching sample of the Phase 2 development area. The evaluation trenches demonstrated that the Phase 2 site is archaeologically sterile with no archaeological features or artefacts encountered.</p>
<b>PROPOSED FUTURE WORK:</b>	None
<b>CAPTION(S) FOR ILLUSTRS:</b>	---
<b>SPONSOR OR FUNDING BODY:</b>	Land Partners (Scotland) Ltd.
<b>ADDRESS OF MAIN CONTRIBUTOR:</b>	Edgefield Road Industrial Estate, Loanhead, Midlothian, EH20 9SY
<b>EMAIL ADDRESS:</b>	admin@aocarchaeology.com
<b>ARCHIVE LOCATION</b> (intended/deposited)	Archive to be deposited in NMRS



**AOC Archaeology Group**, Edgefield Industrial Estate, Edgefield Road, Loanhead EH20 9SY  
tel: 0131 440 3593 | fax: 0131 440 3422 | e-mail: [admin@aocarchaeology.com](mailto:admin@aocarchaeology.com)

[www.aocarchaeology.com](http://www.aocarchaeology.com)