

# HS3, Glenalmond Road, Rattray, Perthshire: Archaeological Evaluation Data Structure Report

AOC Project 23287  
25<sup>th</sup> January 2016



ARCHAEOLOGY

HERITAGE

CONSERVATION

## HS3, Glenalmond Road, Rattray, Perthshire: Archaeological Evaluation Data Structure Report

**On Behalf of:** **Springfield Properties PLC**  
Spring field House  
3 Central Park Avenue  
Larbet  
FK5 4RX

**National Grid Reference (NGR):** NO 1856 4605

**OASIS No:** 1-241241

**AOC Project No:** 23287

**Prepared by:** Rob Engl

**Date of Fieldwork:** 11<sup>th</sup> – 22<sup>nd</sup> January 2016

**Date of Report:** 25<sup>th</sup> January 2016

This document has been prepared in accordance with AOC standard operating procedures.

**Author:** Rob Engl **Date:** 25<sup>th</sup> January 2016

**Approved by:** Martin Cook **Date:** 25<sup>th</sup> January 2016

**Draft/Final Report Stage:** Draft **Date:** 25<sup>th</sup> January 2016

**Enquiries to:** AOC Archaeology Group  
Edgefield Industrial Estate  
Edgefield Road  
Loanhead  
EH20 9SY

Tel. 0131 440 3593  
Fax. 0131 440 3422  
e-mail. admin@aocarchaeology.com



## Contents

	<b>Page</b>
List of Illustrations .....	3
List of Plates .....	3
List of Appendices .....	3
Abstract.....	4
<b>1 INTRODUCTION .....</b>	<b>5</b>
1.1 Background .....	5
1.2 Location.....	5
1.3 Site Background.....	5
<b>2 OBJECTIVES .....</b>	<b>6</b>
<b>3 METHODOLOGY .....</b>	<b>6</b>
<b>4 RESULTS .....</b>	<b>7</b>
<b>5 CONCLUSION AND RECOMMENDATIONS.....</b>	<b>9</b>
<b>6 REFERENCES .....</b>	<b>9</b>
<b>APPENDIX 1: Trench Descriptions .....</b>	<b>11</b>
<b>APPENDIX 2: Photographic Register .....</b>	<b>25</b>
<b>APPENDIX 3: ‘Discovery and Excavation in Scotland’ Report.....</b>	<b>27</b>

## List of Illustrations

- Figure 1 Site location  
Figure 2 Evaluation trench locations

## List of Plates

- Plate 1 Site area under evaluation from east  
Plate 2 Site area under evaluation from east showing steep gradient to the north  
Plate 3 Trench 41 post-excavation from north-east  
Plate 4 Trench 67 post-excavation from north-east

## List of Appendices

- Appendix 1 Trench Descriptions  
Appendix 2 Photographic Record  
Appendix 3 '*Discovery and Excavation in Scotland*' Report

## Abstract

---

This report presents the results of an archaeological evaluation undertaken in relation to a proposed housing development at Glenalmond Road, Rattray Perthshire (NGR: NO 1856 4605).

The evaluation required a 10% trenching sample (5,800 linear metres) of the proposed 11.59 hectare development area. The area is currently used as arable land. Due to steep sloping ground along the northern site boundary and the presence of live services the total trenching undertaken amounted to 4,225 linear metres.

Trenching revealed drift geology of relatively free draining glacial sands and gravels cut by occasional modern drains aligned north-east to south-west. Numerous plough scars were observed. The natural was overlain by an improved plough-soil of organic red brown sandy loam. Pockets of colluvial silt were recorded in many of the trenches, with substantial deposits occurring at the base of sloping ground.

No archaeologically significant features or material was recovered during the evaluation. Evidence of 19<sup>th</sup> century improvement occurred in the form of ceramics and glass which were observed in almost all of the trenches. No further works are considered necessary. This will be decided by Ms Sarah Malone of Perth & Kinross Heritage Trust who advises Perth and Kinross Council on archaeological matters.

# 1 INTRODUCTION

## 1.1 Background

1.1.1 AOC Archaeology Group was commissioned by Springfield Property Plc to undertake an archaeological evaluation on an 11.59 hectare land parcel at Glenalmond Road, Rattray, Perthshire. The evaluation was undertaken in order to satisfy the requirements of the local planning authority, Perthshire Council, who are advised on archaeological matters by the Perth & Kinross Heritage Trust (PKHT). The works were conducted according to the terms of a *Written Scheme of Investigation* (AOC 2015) approved by PKHT on behalf of Perthshire Council and in accordance with the principles set out in *Scottish Planning Policy* (Scottish Government 2014) and *PAN 2/2011 Planning & Archaeology* (Scottish Government 2011).

## 1.2 Location

1.2.1 The development area is located to the immediate north of Glenalmond Road, Rattray and covers an area of agricultural land totalling 11.59 ha (centred on NGR: NO 18560 46059). The site is bounded by Blairgowrie Holiday Park to the west, with a mixture of fields and woodland to the north and east (Figure 1).

1.2.2 The development area is highly undulating with ground ranging from 24.0 m to 58.0 m OD in height.

## 1.3 Site Background

1.3.1 According to the National Monuments Register of Scotland, there are no known sites within the proposed development area of H63 Glenalmond Road. However, at Kirklands to the immediate NE of the northern corner, and to the E of the site, close to the current farm buildings, there are two possible prehistoric crop mark sites. The more convincing of these sites is part of a potentially circular enclosure (Canmore ID 83156), with a less obvious souterrain (Canmore ID 83157). Both are in the field to the immediate NE and E of the development site, but no crop mark sites are visible within the site itself.

1.3.2 Within a few hundred metres to the E of these crop marks there is another possible souterrain at Drumend (Canmore ID 83155). There are also notes of a burial cairn containing a long cist with a dagger to the SE of the site at Haer cairn (Canmore ID 28738). Further afield and to the N and NE there are notes of a now bulldozed stone circle and standing stone at Broad Moss, as well as another standing stone and stone circle at Craighall. All of these sites suggest that there was a thriving prehistoric community utilising the area N of Rattray. Given the presence of the enclosure and possible souterrain next to the development area, it is possible that associated, significant prehistoric archaeology may survive within the development area.

1.3.3 Apart from the possibility of prehistoric archaeology, there is little evidence for early medieval or medieval activity in the area. The other most prominent sites relate to post medieval agricultural and industrial activity. The Kirklands farmstead is situated to the immediate east of the development area, but there is also Countlaw farmstead (Canmore ID 140721) to the north. As well as the

farmsteads there are also two nearby mills at Keathbank (Canmore ID 28767) and Oakbank (112172) to the west on the banks of the Esk that were built in the late 19<sup>th</sup> Century.

## 2 OBJECTIVES

2.1 The objectives of the archaeological evaluation were:

- i) to determine and assess the character, extent, condition, quality, date and significance of any buried archaeological remains within the proposed development area;
- ii) to advise and implement an appropriate form of mitigation, such as excavation, post-excavation analyses and publication given the infeasibility of preserving the archaeological material *in situ*, should significant archaeological remains be encountered.

## 3 METHODOLOGY

3.1 The evaluation was undertaken by two tracked excavators equipped with 2.2 m wide ditching buckets. Excavation was undertaken until natural was reached. Excavated trenches were 50 m in length. All machine excavation was supervised by an experienced field archaeologist and according to AOC Archaeology Group's standard operating procedures, and as per the methodology within the *Written Scheme of Investigation* (AOC 2015).



**Plate 1: Site area under evaluation from east**





**Plate 2: Site area under evaluation from east showing steep gradient to the north**

## **4 RESULTS**

- 4.1 The archaeological evaluation was undertaken on 11<sup>th</sup> – 22<sup>nd</sup> January 2016. Weather conditions varied however good archaeological visibility was present throughout.



**Plate 3: Trench 41 post-excitation from north-east**



- 4.2 In total, 4,225 linear metres were opened across of the proposed development area (Figure 2). The presence of steeply sloping ground along the north of the land parcel and live services to the east reduced the area available for evaluation. Initially the evaluation was to consist of a 10% sample (5,800 linear metres) of the 11.59 hectare area.



**Plate 4: Trench 67 post excavation from north-west**

- 4.3 The evaluation trenches revealed an improved plough-soil of red-brown sandy loam. This contained occasional shards of 19<sup>th</sup> century glass and ceramics. The top-soil ranged from 0.20 m to 0.40 m metres in depth. In most of the development area the top-soil immediately overlay drift geology of glacial sands and gravels. The natural was frequently scarred with plough marks. Pockets of colluvial silt up to 0.80 m metres in depth were recorded within the lower lying ground at the base of slopes. Trenches excavated within the east of the area were subject to standing water, the result of drainage from the northern slopes. Occasional modern drains were recorded aligned north-east to south-west. Drainage was not intensive probably the result of the relatively free draining natural.
- 4.4 The north of the development area was dominated by a large steep slope. The present farmer revealed that this area was formerly occupied by a woodland copse which had been bull dozed in order to clear the area for cultivation. Top-soil was then imported from a site to the immediate south of Glenalmond Road now occupied by housing.
- 4.5 No archaeologically significant features or deposits were observed throughout duration of the evaluation. No artefacts were recovered from the topsoil.

## 5 CONCLUSION AND RECOMMENDATIONS

- 5.1 The evaluation revealed no archaeologically significant features or remains.
- 5.2 Given the negative findings produced by the evaluation no further archaeological works associated with the Glenalmond Road site are considered necessary. This will be decided by Ms Sarah Malone of Perth & Kinross Heritage Trust (PKHT) who advises Perthshire Council on archaeological matters.

## 6 REFERENCES

AOC Archaeology 2015, *HS3 Glenalmond Road, Rattray, Perthshire: Archaeological Evaluation Written Scheme of Investigation* Unpublished AOC project design

Scottish Government 2014 *Scottish Planning Policy*, 2014

Scottish Government 2011 *Planning And Archaeology 2/2011*

# **H63, Glenalmond Road, Rattray, Perthshire: Archaeological Evaluation Data Structure Report**

## **Section 2: Appendices**

## APPENDIX 1: Trench Descriptions

### Trench 1

<i>Dimensions</i>	50 m by 2.2 m
<i>Excavated Orientation</i>	SE to NW
<i>Top-soil</i>	0.25 m
<i>Colluvium</i>	N/A
<i>Depth of Excavation</i>	0.35 m
<i>Significant Features</i>	None
<i>Other Features</i>	None
<i>Natural Subsoil</i>	Glacial orange sands and gravels
<i>Finds</i>	None

### Trench 2

<i>Dimensions</i>	50 m by 2.2 m
<i>Excavated Orientation</i>	NE to SW
<i>Top-soil</i>	0.25 m
<i>Colluvium</i>	N/A
<i>Depth of Excavation</i>	0.35 m
<i>Significant Features</i>	None
<i>Other Features</i>	None
<i>Natural Subsoil</i>	Glacial orange sands and gravels
<i>Finds</i>	None

### Trench 3

<i>Dimensions</i>	50 m by 2.2 m
<i>Excavated Orientation</i>	NW to SE
<i>Top-soil</i>	0.30 m – 0.40 m
<i>Colluvium</i>	0.20 m
<i>Depth of Excavation</i>	0.35 m – 0.55 m
<i>Significant Features</i>	None
<i>Other Features</i>	None
<i>Natural Subsoil</i>	Glacial orange sands and gravels
<i>Finds</i>	19 <sup>th</sup> century ceramics

### Trench 4

<i>Dimensions</i>	50 m by 2.2 m
<i>Excavated Orientation</i>	NE to SW
<i>Top-soil</i>	0.30 m
<i>Colluvium</i>	N/A
<i>Depth of Excavation</i>	0.32 m – 0.34 m
<i>Significant Features</i>	None
<i>Other Features</i>	Occasional stone-holes
<i>Natural Subsoil</i>	Glacial orange sands and gravels
<i>Finds</i>	None

### Trench 5

<i>Dimensions</i>	50 m by 2.2 m
<i>Excavated Orientation</i>	NE to SW
<i>Top-soil</i>	0.50 m
<i>Colluvium</i>	0.15 m
<i>Depth of Excavation</i>	0.75 m
<i>Significant Features</i>	None
<i>Other Features</i>	Plastic drain at 12.0 m N-S

<i>Natural Subsoil</i>	Glacial orange sands and gravels
<i>Finds</i>	None

#### **Trench 6**

<i>Dimensions</i>	50 m by 2.2 m
<i>Excavated Orientation</i>	NE to SW
<i>Top-soil</i>	0.20 m – 0.40 m
<i>Colluvium</i>	0.10 m – 0.40 m
<i>Depth of Excavation</i>	0.40 m – 0.60 m
<i>Significant Features</i>	None
<i>Other Features</i>	Occasional plough scars
<i>Natural Subsoil</i>	Glacial orange sands and gravels
<i>Finds</i>	None

#### **Trench 7**

<i>Dimensions</i>	75 m by 2.2 m
<i>Excavated Orientation</i>	NW to SE
<i>Top-soil</i>	0.30 m
<i>Colluvium</i>	0.70 m
<i>Depth of Excavation</i>	0.40 m – 0.75 m
<i>Significant Features</i>	None
<i>Other Features</i>	None
<i>Natural Subsoil</i>	Glacial orange sands and gravels
<i>Finds</i>	None

#### **Trench 8**

<i>Dimensions</i>	50 m by 2.2 m
<i>Excavated Orientation</i>	NE to SW
<i>Top-soil</i>	0.20 m – 0.3m
<i>Colluvium</i>	0.20 m
<i>Depth of Excavation</i>	0.40 m
<i>Significant Features</i>	None
<i>Other Features</i>	None
<i>Natural Subsoil</i>	Glacial orange sands and gravels
<i>Finds</i>	None

#### **Trench 9**

<i>Dimensions</i>	50 m by 2.2 m
<i>Excavated Orientation</i>	NW to SE
<i>Top-soil</i>	0.30 m
<i>Colluvium</i>	0.20 m
<i>Depth of Excavation</i>	0.30 m – 0.50 m
<i>Significant Features</i>	None
<i>Other Features</i>	Occasional plough scars
<i>Natural Subsoil</i>	Glacial orange sands and gravels
<i>Finds</i>	19 <sup>th</sup> century ceramics

#### **Trench 10**

<i>Dimensions</i>	50 m by 2.2 m
<i>Excavated Orientation</i>	NE to SW
<i>Top-soil</i>	0.20 m
<i>Colluvium</i>	0.10 m – 0.40 m
<i>Depth of Excavation</i>	0.40 m – 0.60 m
<i>Significant Features</i>	None



<i>Other Features</i>	Occasional plough scars
<i>Natural Subsoil</i>	Glacial orange sands and gravels
<i>Finds</i>	None

**Trench 11**

<i>Dimensions</i>	50 m by 2.2 m
<i>Excavated Orientation</i>	NW to SE
<i>Top-soil</i>	0.40 m
<i>Colluvium</i>	0.15 m – 0.65 m
<i>Depth of Excavation</i>	0.40 m – 0.70 m
<i>Significant Features</i>	None
<i>Other Features</i>	None
<i>Natural Subsoil</i>	Glacial orange sands and gravels
<i>Finds</i>	None

**Trench 12**

<i>Dimensions</i>	50 m by 2.2 m
<i>Excavated Orientation</i>	NE to SW
<i>Top-soil</i>	0.20 m – 0.40 m
<i>Colluvium</i>	0.10 m – 0.60 m
<i>Depth of Excavation</i>	0.40 m – 0.60 m
<i>Significant Features</i>	None
<i>Other Features</i>	None
<i>Natural Subsoil</i>	Glacial orange sands and gravels
<i>Finds</i>	None

**Trench 13**

<i>Dimensions</i>	50 m by 2.2 m
<i>Excavated Orientation</i>	NW to SE
<i>Top-soil</i>	0.40 m
<i>Colluvium</i>	0.20 m – 0.40 m
<i>Depth of Excavation</i>	0.40 m – 0.60 m
<i>Significant Features</i>	None
<i>Other Features</i>	Occasional plough scars
<i>Natural Subsoil</i>	Glacial orange sands and gravels
<i>Finds</i>	19th century ceramics

**Trench 14**

<i>Dimensions</i>	50 m by 2.2 m
<i>Excavated Orientation</i>	NE to SW
<i>Top-soil</i>	0.20 m – 0.40 m
<i>Colluvium</i>	0.80 m
<i>Depth of Excavation</i>	0.40 m – 1.20 m
<i>Significant Features</i>	None
<i>Other Features</i>	Occasional plough scars. Modern drain at 22.0 m NE-SW
<i>Natural Subsoil</i>	Glacial orange sands and gravels
<i>Finds</i>	None

**Trench 15**

<i>Dimensions</i>	50 m by 2.2 m
<i>Excavated Orientation</i>	NW to SE
<i>Top-soil</i>	0.40 m
<i>Colluvium</i>	0.40 m
<i>Depth of Excavation</i>	0.80 m

<i>Significant Features</i>	None
<i>Other Features</i>	None
<i>Natural Subsoil</i>	Glacial orange sands and gravels
<i>Finds</i>	None

**Trench 16**

<i>Dimensions</i>	50 m by 2.2 m
<i>Excavated Orientation</i>	NE to SW
<i>Top-soil</i>	0.20 m
<i>Colluvium</i>	0.10 m – 0.40 m
<i>Depth of Excavation</i>	0.20 m – 0.60 m
<i>Significant Features</i>	None
<i>Other Features</i>	Occasional plough scars
<i>Natural Subsoil</i>	Glacial orange sands and gravels
<i>Finds</i>	None

**Trench 17**

<i>Dimensions</i>	50 m by 2.2 m
<i>Excavated Orientation</i>	NW to SE
<i>Top-soil</i>	0.30 m
<i>Colluvium</i>	0.40 m
<i>Depth of Excavation</i>	0.40 m – 0.60 m
<i>Significant Features</i>	None
<i>Other Features</i>	Occasional plough scars
<i>Natural Subsoil</i>	Glacial orange sands and gravels
<i>Finds</i>	None

**Trench 18**

<i>Dimensions</i>	50 m by 2.2 m
<i>Excavated Orientation</i>	NE to SW
<i>Top-soil</i>	0.20 m – 0.40 m
<i>Colluvium</i>	0.10 m – 0.80 m
<i>Depth of Excavation</i>	0.40 m – 1.00 m
<i>Significant Features</i>	None
<i>Other Features</i>	Occasional plough scars
<i>Natural Subsoil</i>	Glacial orange sands and gravels
<i>Finds</i>	19 <sup>th</sup> century ceramics and slate

**Trench 19**

<i>Dimensions</i>	50 m by 2.2 m
<i>Excavated Orientation</i>	NE to SW
<i>Top-soil</i>	0.35 m – 0.40 m
<i>Colluvium</i>	None
<i>Depth of Excavation</i>	0.40 m
<i>Significant Features</i>	None
<i>Other Features</i>	None
<i>Natural Subsoil</i>	Glacial orange sands and gravels
<i>Finds</i>	None

**Trench 20**

<i>Dimensions</i>	50 m by 2.2 m
<i>Excavated Orientation</i>	NE to SW
<i>Top-soil</i>	0.20 m – 0.40 m
<i>Colluvium</i>	0.10 m – 0.80 m

<i>Depth of Excavation</i>	0.40 m – 1.0 m
<i>Significant Features</i>	None
<i>Other Features</i>	Occasional plough scars
<i>Natural Subsoil</i>	Glacial orange sands and gravels
<i>Finds</i>	None

#### **Trench 21**

<i>Dimensions</i>	50 m by 2.2 m
<i>Excavated Orientation</i>	NW to SE
<i>Top-soil</i>	0.30 m
<i>Colluvium</i>	0.20 m
<i>Depth of Excavation</i>	0.50 m
<i>Significant Features</i>	None
<i>Other Features</i>	Clay drain at 20.0 m, 40.0 m & 75.0 m N-S
<i>Natural Subsoil</i>	Glacial orange sands and gravels
<i>Finds</i>	None

#### **Trench 22**

<i>Dimensions</i>	50 m by 2.2 m
<i>Excavated Orientation</i>	NE to SW
<i>Top-soil</i>	0.20 m – 0.50 m
<i>Colluvium</i>	0.10 m – 1.0 m
<i>Depth of Excavation</i>	0.40 m – 1.40 m
<i>Significant Features</i>	None
<i>Other Features</i>	Occasional plough scars
<i>Natural Subsoil</i>	Glacial orange sands and gravels
<i>Finds</i>	None

#### **Trench 23**

<i>Dimensions</i>	50 m by 2.2 m
<i>Excavated Orientation</i>	NW to SE
<i>Top-soil</i>	0.30 m – 0.40 m
<i>Colluvium</i>	0.20 m – 0.40 m
<i>Depth of Excavation</i>	0.40 m – 0.70 m
<i>Significant Features</i>	None
<i>Other Features</i>	Clay drain at 2.0 m N-S
<i>Natural Subsoil</i>	Glacial orange sands and gravels
<i>Finds</i>	None

#### **Trench 25**

<i>Dimensions</i>	50 m by 2.2 m
<i>Excavated Orientation</i>	NW to SE
<i>Top-soil</i>	0.20 m – 0.40 m
<i>Colluvium</i>	None
<i>Depth of Excavation</i>	0.40 m
<i>Significant Features</i>	None
<i>Other Features</i>	Occasional plough scars
<i>Natural Subsoil</i>	Glacial orange sands and gravels
<i>Finds</i>	None

#### **Trench 27**

<i>Dimensions</i>	50 m by 2.2 m
<i>Excavated Orientation</i>	SW to NE
<i>Top-soil</i>	0.25 m

<i>Colluvium</i>	None
<i>Depth of Excavation</i>	0.30 m
<i>Significant Features</i>	None
<i>Other Features</i>	Occasional plough scars
<i>Natural Subsoil</i>	Glacial orange sands and gravels
<i>Finds</i>	19 <sup>th</sup> century ceramics

**Trench 28**

<i>Dimensions</i>	50 m by 2.2 m
<i>Excavated Orientation</i>	NE to SW
<i>Top-soil</i>	0.30 m – 0.40 m
<i>Colluvium</i>	0.30 m – 0.40 m
<i>Depth of Excavation</i>	0.50 m – 0.80 m
<i>Significant Features</i>	None
<i>Other Features</i>	Occasional plough scars
<i>Natural Subsoil</i>	Glacial orange sands and gravels
<i>Finds</i>	None

**Trench 29**

<i>Dimensions</i>	50 m by 2.2 m
<i>Excavated Orientation</i>	SW to NE
<i>Top-soil</i>	0.30 m – 0.40 m
<i>Colluvium</i>	0.30 m – 0.40 m
<i>Depth of Excavation</i>	0.60 m – 0.80 m
<i>Significant Features</i>	None
<i>Other Features</i>	Occasional plough scars
<i>Natural Subsoil</i>	Glacial orange sands and gravels
<i>Finds</i>	None

**Trench 30**

<i>Dimensions</i>	50 m by 2.2 m
<i>Excavated Orientation</i>	NE to SW
<i>Top-soil</i>	0.40 m
<i>Colluvium</i>	0.10 m
<i>Depth of Excavation</i>	0.50 m
<i>Significant Features</i>	None
<i>Other Features</i>	Occasional plough scars
<i>Natural Subsoil</i>	Glacial orange sands and gravels
<i>Finds</i>	None

**Trench 31**

<i>Dimensions</i>	50 m by 2.2 m
<i>Excavated Orientation</i>	SW to NE
<i>Top-soil</i>	0.30 m
<i>Colluvium</i>	0.20 m
<i>Depth of Excavation</i>	0.40 m – 0.50 m
<i>Significant Features</i>	None
<i>Other Features</i>	Occasional plough scars
<i>Natural Subsoil</i>	Glacial orange sands and gravels
<i>Finds</i>	None

**Trench 32**

<i>Dimensions</i>	50 m by 2.2 m
<i>Excavated Orientation</i>	NE to SW

<i>Top-soil</i>	0.25 m
<i>Colluvium</i>	None
<i>Depth of Excavation</i>	0.30 m
<i>Significant Features</i>	None
<i>Other Features</i>	Occasional plough scars
<i>Natural Subsoil</i>	Glacial orange sands and gravels
<i>Finds</i>	None

**Trench 33**

<i>Dimensions</i>	50 m by 2.2 m
<i>Excavated Orientation</i>	SE to NW
<i>Top-soil</i>	0.25 m – 0.30 m
<i>Colluvium</i>	0.20 m
<i>Depth of Excavation</i>	0.30 m – 0.50 m
<i>Significant Features</i>	None
<i>Other Features</i>	Occasional plough scars
<i>Natural Subsoil</i>	Glacial orange sands and gravels
<i>Finds</i>	None

**Trench 34**

<i>Dimensions</i>	50 m by 2.2 m
<i>Excavated Orientation</i>	NE to SW
<i>Top-soil</i>	0.25 m
<i>Colluvium</i>	None
<i>Depth of Excavation</i>	0.30 m
<i>Significant Features</i>	None
<i>Other Features</i>	Occasional plough scars
<i>Natural Subsoil</i>	Glacial orange sands and gravels
<i>Finds</i>	None

**Trench 35**

<i>Dimensions</i>	50 m by 2.2 m
<i>Excavated Orientation</i>	NW to SE
<i>Top-soil</i>	0.20 m – 0.30 m
<i>Colluvium</i>	0.10 m – 0.60 m
<i>Depth of Excavation</i>	0.30 m – 1.00 m
<i>Significant Features</i>	None
<i>Other Features</i>	Occasional plough scars
<i>Natural Subsoil</i>	Glacial orange sands and gravels
<i>Finds</i>	None

**Trench 36**

<i>Dimensions</i>	50 m by 2.2 m
<i>Excavated Orientation</i>	NE to SW
<i>Top-soil</i>	0.30 m
<i>Colluvium</i>	None
<i>Depth of Excavation</i>	0.40 m
<i>Significant Features</i>	None
<i>Other Features</i>	None
<i>Natural Subsoil</i>	Glacial orange sands and gravels
<i>Finds</i>	None



**Trench 37**

<i>Dimensions</i>	50 m by 2.2 m
<i>Excavated Orientation</i>	NW to SE
<i>Top-soil</i>	0.30 m
<i>Colluvium</i>	None
<i>Depth of Excavation</i>	0.40 m
<i>Significant Features</i>	None
<i>Other Features</i>	Occasional plough scars
<i>Natural Subsoil</i>	Glacial orange sands and gravels
<i>Finds</i>	None

**Trench 38**

<i>Dimensions</i>	50 m by 2.2 m
<i>Excavated Orientation</i>	SE to NW
<i>Top-soil</i>	0.30 m
<i>Colluvium</i>	0.40 m
<i>Depth of Excavation</i>	0.40 m – 0.60 m
<i>Significant Features</i>	None
<i>Other Features</i>	Occasional plough scars
<i>Natural Subsoil</i>	Glacial orange sands and gravels
<i>Finds</i>	None

**Trench 39**

<i>Dimensions</i>	50 m by 2.2 m
<i>Excavated Orientation</i>	NW to SE
<i>Top-soil</i>	0.30 m
<i>Colluvium</i>	None
<i>Depth of Excavation</i>	0.35 m
<i>Significant Features</i>	None
<i>Other Features</i>	Occasional plough scars
<i>Natural Subsoil</i>	Glacial orange sands and gravels
<i>Finds</i>	None

**Trench 40****Trench 41**

<i>Dimensions</i>	50 m by 2.2 m
<i>Excavated Orientation</i>	SSE to NNW
<i>Top-soil</i>	0.30 m
<i>Colluvium</i>	0.40 m
<i>Depth of Excavation</i>	0.40 m – 0.60 m
<i>Significant Features</i>	None
<i>Other Features</i>	Occasional plough scars
<i>Natural Subsoil</i>	Glacial orange sands and gravels
<i>Finds</i>	None

**Trench 42**

<i>Dimensions</i>	50 m by 2.2 m
<i>Excavated Orientation</i>	NW to SE
<i>Top-soil</i>	0.30 m
<i>Colluvium</i>	0.40 m

<i>Depth of Excavation</i>	0.40 m
<i>Significant Features</i>	None
<i>Other Features</i>	Occasional plough scars
<i>Natural Subsoil</i>	Glacial orange sands and gravels
<i>Finds</i>	None

**Trench 43**

<i>Dimensions</i>	50 m by 2.2 m
<i>Excavated Orientation</i>	NE to SW
<i>Top-soil</i>	0.30 m
<i>Colluvium</i>	0.30 m – 0.70 m
<i>Depth of Excavation</i>	0.60 m – 1.00 m
<i>Significant Features</i>	None
<i>Other Features</i>	Occasional plough scars
<i>Natural Subsoil</i>	Glacial orange sands and gravels
<i>Finds</i>	None

**Trench 44**

<i>Dimensions</i>	50 m by 2.2 m
<i>Excavated Orientation</i>	NW to SE
<i>Top-soil</i>	0.20 m – 0.40 m
<i>Colluvium</i>	None
<i>Depth of Excavation</i>	0.40 m
<i>Significant Features</i>	None
<i>Other Features</i>	Occasional plough scars
<i>Natural Subsoil</i>	Glacial orange sands and gravels
<i>Finds</i>	None

**Trench 45**

<i>Dimensions</i>	50 m by 2.2 m
<i>Excavated Orientation</i>	SSE to NNW
<i>Top-soil</i>	0.30 m
<i>Colluvium</i>	0.30 m
<i>Depth of Excavation</i>	0.40 m – 1.0 m
<i>Significant Features</i>	None
<i>Other Features</i>	Large rubble drain at 0.0 m to 7.0 m N-S
<i>Natural Subsoil</i>	Glacial orange sands and gravels
<i>Finds</i>	None

**Trench 46**

<i>Dimensions</i>	50 m by 2.2 m
<i>Excavated Orientation</i>	NW to SE
<i>Top-soil</i>	0.30 m
<i>Colluvium</i>	None
<i>Depth of Excavation</i>	0.40 m
<i>Significant Features</i>	None
<i>Other Features</i>	Occasional plough scars
<i>Natural Subsoil</i>	Glacial orange sands and gravels
<i>Finds</i>	None

**Trench 47**

<i>Dimensions</i>	50 m by 2.2 m
<i>Excavated Orientation</i>	SSE to NNW
<i>Top-soil</i>	0.40 m

<i>Colluvium</i>	None
<i>Depth of Excavation</i>	0.40 m – 0.60 m
<i>Significant Features</i>	None
<i>Other Features</i>	Occasional plough scars
<i>Natural Subsoil</i>	Glacial orange sands and gravels
<i>Finds</i>	19 <sup>th</sup> century ceramics

**Trench 48**

<i>Dimensions</i>	50 m by 2.2 m
<i>Excavated Orientation</i>	NW to SE
<i>Top-soil</i>	0.30 m
<i>Colluvium</i>	None
<i>Depth of Excavation</i>	0.40 m
<i>Significant Features</i>	None
<i>Other Features</i>	Occasional plough scars
<i>Natural Subsoil</i>	Glacial orange sands and gravels
<i>Finds</i>	None

**Trench 49**

<i>Dimensions</i>	50 m by 2.2 m
<i>Excavated Orientation</i>	SSE to NNW
<i>Top-soil</i>	0.40 m
<i>Colluvium</i>	None
<i>Depth of Excavation</i>	0.40 m – 0.60 m
<i>Significant Features</i>	None
<i>Other Features</i>	Occasional plough scars
<i>Natural Subsoil</i>	Glacial orange sands and gravels
<i>Finds</i>	None

**Trench 50**

<i>Dimensions</i>	50 m by 2.2 m
<i>Excavated Orientation</i>	NW to SE
<i>Top-soil</i>	0.30 m
<i>Colluvium</i>	None
<i>Depth of Excavation</i>	0.40 m
<i>Significant Features</i>	None
<i>Other Features</i>	Occasional plough scars
<i>Natural Subsoil</i>	Glacial orange sands and gravels
<i>Finds</i>	None

**Trench 51**

<i>Dimensions</i>	50 m by 2.2 m
<i>Excavated Orientation</i>	SSE to NNW
<i>Top-soil</i>	0.25 m
<i>Colluvium</i>	None
<i>Depth of Excavation</i>	0.40 m
<i>Significant Features</i>	None
<i>Other Features</i>	Occasional plough scars
<i>Natural Subsoil</i>	Glacial orange sands and gravels
<i>Finds</i>	None

**Trench 52**

<i>Dimensions</i>	50 m by 2.2 m
<i>Excavated Orientation</i>	E to W
<i>Top-soil</i>	0.30 m – 0.40 m
<i>Colluvium</i>	None
<i>Depth of Excavation</i>	0.40 m
<i>Significant Features</i>	None
<i>Other Features</i>	None
<i>Natural Subsoil</i>	Glacial orange sands and gravels
<i>Finds</i>	None

**Trench 53**

<i>Dimensions</i>	50 m by 2.2 m
<i>Excavated Orientation</i>	N to S
<i>Top-soil</i>	0.30 m – 0.40 m
<i>Colluvium</i>	0.10 m – 0.30 m
<i>Depth of Excavation</i>	0.50 m – 0.70 m
<i>Significant Features</i>	None
<i>Other Features</i>	Occasional plough scars
<i>Natural Subsoil</i>	Glacial orange sands and gravels
<i>Finds</i>	19 <sup>th</sup> century ceramics

**Trench 54**

<i>Dimensions</i>	50 m by 2.2 m
<i>Excavated Orientation</i>	E to W
<i>Top-soil</i>	0.30 m
<i>Colluvium</i>	None
<i>Depth of Excavation</i>	0.40 m
<i>Significant Features</i>	None
<i>Other Features</i>	Occasional plough scars
<i>Natural Subsoil</i>	Glacial orange sands and gravels
<i>Finds</i>	None

**Trench 55**

<i>Dimensions</i>	50 m by 2.2 m
<i>Excavated Orientation</i>	NE to SW
<i>Top-soil</i>	0.40 m
<i>Colluvium</i>	0.20 m – 0.50 m
<i>Depth of Excavation</i>	0.50 m – 0.90 m
<i>Significant Features</i>	None
<i>Other Features</i>	Sheep burial at 7.0 m
<i>Natural Subsoil</i>	Glacial orange sands and gravels
<i>Finds</i>	None

**Trench 56**

<i>Dimensions</i>	50 m by 2.2 m
<i>Excavated Orientation</i>	E to W
<i>Top-soil</i>	0.30 m
<i>Colluvium</i>	None
<i>Depth of Excavation</i>	0.40 m
<i>Significant Features</i>	None

<i>Other Features</i>	Occasional plough scars
<i>Natural Subsoil</i>	Glacial orange sands and gravels
<i>Finds</i>	None

**Trench 57**

<i>Dimensions</i>	50 m by 2.2 m
<i>Excavated Orientation</i>	N to S
<i>Top-soil</i>	0.40 m
<i>Colluvium</i>	0.40 m
<i>Depth of Excavation</i>	0.70 m
<i>Significant Features</i>	None
<i>Other Features</i>	None
<i>Natural Subsoil</i>	Glacial orange sands and gravels
<i>Finds</i>	None

**Trench 58**

<i>Dimensions</i>	50 m by 2.2 m
<i>Excavated Orientation</i>	E to W
<i>Top-soil</i>	0.30 m
<i>Colluvium</i>	0.20 m
<i>Depth of Excavation</i>	0.50 m
<i>Significant Features</i>	None
<i>Other Features</i>	Occasional plough scars
<i>Natural Subsoil</i>	Glacial orange sands and gravels
<i>Finds</i>	None

**Trench 59**

<i>Dimensions</i>	50 m by 2.2 m
<i>Excavated Orientation</i>	N to S
<i>Top-soil</i>	0.30 m
<i>Colluvium</i>	0.15 m
<i>Depth of Excavation</i>	0.45 m
<i>Significant Features</i>	None
<i>Other Features</i>	None
<i>Natural Subsoil</i>	Glacial orange sands and gravels
<i>Finds</i>	None

**Trench 60**

<i>Dimensions</i>	50 m by 2.2 m
<i>Excavated Orientation</i>	E to W
<i>Top-soil</i>	0.30 m
<i>Colluvium</i>	0.30 m – 0.50 m
<i>Depth of Excavation</i>	0.40 m
<i>Significant Features</i>	None
<i>Other Features</i>	Occasional plough scars
<i>Natural Subsoil</i>	Glacial orange sands and gravels
<i>Finds</i>	None

**Trench 51**

<i>Dimensions</i>	50 m by 2.2 m
<i>Excavated Orientation</i>	N to S
<i>Top-soil</i>	0.40 m
<i>Colluvium</i>	None



<i>Depth of Excavation</i>	0.50 m
<i>Significant Features</i>	None
<i>Other Features</i>	Occasional plough scars
<i>Natural Subsoil</i>	Glacial orange sands and gravels
<i>Finds</i>	None

**Trench 62**

<i>Dimensions</i>	50 m by 2.2 m
<i>Excavated Orientation</i>	E to W
<i>Top-soil</i>	0.30 m – 0.50 m
<i>Colluvium</i>	0.10 m – 0.50 m
<i>Depth of Excavation</i>	0.60 m – 1.00 m
<i>Significant Features</i>	None
<i>Other Features</i>	Occasional plough scars
<i>Natural Subsoil</i>	Glacial orange sands and gravels
<i>Finds</i>	None

**Trench 63**

<i>Dimensions</i>	50 m by 2.2 m
<i>Excavated Orientation</i>	E to W
<i>Top-soil</i>	0.40m
<i>Colluvium</i>	0.20 m
<i>Depth of Excavation</i>	0.60 m
<i>Significant Features</i>	None
<i>Other Features</i>	None
<i>Natural Subsoil</i>	Glacial orange sands and gravels
<i>Finds</i>	None

**Trench 64**

<i>Dimensions</i>	50 m by 2.2 m
<i>Excavated Orientation</i>	E to W
<i>Top-soil</i>	0.40 m
<i>Colluvium</i>	0.60 m
<i>Depth of Excavation</i>	0.50 m – 1.00 m
<i>Significant Features</i>	None
<i>Other Features</i>	Occasional plough scars
<i>Natural Subsoil</i>	Glacial orange sands and gravels
<i>Finds</i>	None

**Trench 65**

<i>Dimensions</i>	50 m by 2.2 m
<i>Excavated Orientation</i>	SE to NW
<i>Top-soil</i>	0.40 m
<i>Colluvium</i>	0.10 m – 0.50 m
<i>Depth of Excavation</i>	0.50 m - 0.90 m
<i>Significant Features</i>	None
<i>Other Features</i>	Occasional plough scars
<i>Natural Subsoil</i>	Glacial orange sands and gravels
<i>Finds</i>	None

**Trench 66**

<i>Dimensions</i>	50 m by 2.2 m
-------------------	---------------

<i>Excavated Orientation</i>	E to W
<i>Top-soil</i>	0.30 m
<i>Colluvium</i>	0.10 m
<i>Depth of Excavation</i>	0.40 m
<i>Significant Features</i>	None
<i>Other Features</i>	Occasional plough scars
<i>Natural Subsoil</i>	Glacial orange sands and gravels
<i>Finds</i>	None

**Trench 67**

<i>Dimensions</i>	50 m by 2.2 m
<i>Excavated Orientation</i>	SE to NW
<i>Top-soil</i>	0.25 m
<i>Colluvium</i>	None
<i>Depth of Excavation</i>	0.30 m
<i>Significant Features</i>	None
<i>Other Features</i>	Occasional plough scars
<i>Natural Subsoil</i>	Glacial orange sands and gravels
<i>Finds</i>	None

**Trench 68**

<i>Dimensions</i>	50 m by 2.2 m
<i>Excavated Orientation</i>	E to W
<i>Top-soil</i>	0.30 m
<i>Colluvium</i>	0.10 m
<i>Depth of Excavation</i>	0.40 m
<i>Significant Features</i>	None
<i>Other Features</i>	Occasional plough scars
<i>Natural Subsoil</i>	Glacial orange sands and gravels
<i>Finds</i>	None

**Trench 69**

<i>Dimensions</i>	50 m by 2.2 m
<i>Excavated Orientation</i>	E to W
<i>Top-soil</i>	0.20 m
<i>Colluvium</i>	None
<i>Depth of Excavation</i>	0.25 m
<i>Significant Features</i>	None
<i>Other Features</i>	None
<i>Natural Subsoil</i>	Glacial orange sands and gravels
<i>Finds</i>	None

**Trench 70**

<i>Dimensions</i>	50 m by 2.2 m
<i>Excavated Orientation</i>	NW to SE
<i>Top-soil</i>	0.30 m
<i>Colluvium</i>	0.10 m – 0.20 m
<i>Depth of Excavation</i>	0.40 m – 0.50 m
<i>Significant Features</i>	None
<i>Other Features</i>	None
<i>Natural Subsoil</i>	Glacial orange sands and gravels
<i>Finds</i>	None

## APPENDIX 2: Photographic Register

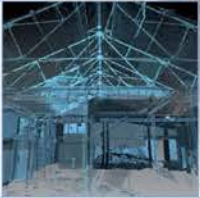
### Digital Photographs

Frame	Description	From
1	Registration shot	-
2	Post ex shot of Trench 1	NW
3	Post ex shot of Trench 3	SE
4	Post ex shot of Trench 5	SE
5	Post ex shot of Trench 7	SE
6	Post ex shot of Trench 9	SE
7	Post ex shot of Trench 11	SE
8	West facing section Trench 11 showing colluvium	W
9	Post ex shot of Trench 13	SE
10	Post ex shot of Trench 15	SE
11	Post ex shot of Trench 19	NW
12	Post ex shot of Trench 21	SE
13	Post ex shot of Trench 23	SE
14	Post ex shot of Trench 25	SE
15	Post ex shot of Trench 27	NE
16	Post ex shot of Trench 28	SW
17	Post ex shot of Trench 29	NE
18	Post ex shot of Trench 30	SE
19	Post ex shot of Trench 31	SE
20	Post ex shot of Trench 32	SW
21	Post ex shot of Trench 33	SW
22	Post ex shot of Trench 34	SW
23	Post ex shot of Trench 35	NW
24	Post ex shot of Trench 36	SE
25	Post ex shot of Trench 37	SE
26	Post ex shot of Trench 38	NW
27	Post ex shot of Trench 39	NW
28	Post ex shot of Trench 41	NW
29	Post ex shot of Trench 43	NW
30	Post ex shot of Trench 45	NW
31	Post ex shot of Trench 47	NW
32	Post ex shot of Trench 49	NW
33	Post ex shot of Trench 51	NW
34	Post ex shot of Trench 53	S
35	Post ex shot of Trench 55	S
36	Post ex shot of Trench 57	S
37	Post ex shot of Trench 59	S

38	Post ex shot of Trench 61	S
39	Post ex shot of Trench 63	NW
40	Post ex shot of Trench 65	NW
41	Post ex shot of Trench 67	NW
42	Post ex shot of Trench 69	E
43	Post ex shot of Trench 70	SE
44	Post ex shot of Trench 68	W
45	Post ex shot of Trench 66	W
46	Post ex shot of Trench 64	W
47	Post ex shot of Trench 62	W
48	Post ex shot of Trench 60	W
49	Post ex shot of Trench 58	W
50	Post ex shot of Trench 56	W
51	Post ex shot of Trench 54	W
52	Post ex shot of Trench 52	W
53	Post ex shot of Trench 50	W
54	Post ex shot of Trench 48	SE
55	Post ex shot of Trench 46	SE
56	Post ex shot of Trench 44	SE
57	Post ex shot of Trench 42	SE
58	Post ex shot of Trench 40	N
59	Post ex shot of Trench 2	SW
60	Post ex shot of Trench 4	SW
61	Post ex shot of Trench 6	SW
62	Post ex shot of Trench 8	SW
63	Post ex shot of Trench 10	SW
64	Post ex shot of Trench 12	SW
65	Post ex shot of Trench 14	SW
66	Post ex shot of Trench 16	SW
67	Post ex shot of Trench 18	SW
68	Post ex shot of Trench 20	SW
69	Post ex shot of Trench 22	SW
70	Post ex shot of Trench 24	SW
71	Post ex shot of Trench 26	SW

**APPENDIX 3: 'Discovery and Excavation in Scotland' Report**

<b>LOCAL AUTHORITY:</b>	Perth & Kinross Council
<b>PROJECT TITLE/SITE NAME</b>	HS3 Glenalmond Road
<b>PROJECT CODE:</b>	AOC 23287
<b>PARISH:</b>	Ratray
<b>NAME OF CONTRIBUTOR:</b>	Rob Engl
<b>NAME OF ORGANISATION:</b>	AOC Archaeology Group
<b>TYPE(S) OF PROJECT:</b>	Archaeological Evaluation
<b>NMRS NO(S)</b>	N/A
<b>SITE/MONUMENT TYPE(S):</b>	N/A
<b>SIGNIFICANT FINDS:</b>	None
<b>NGR (2 letters, 6 figures)</b>	NO 1856 4605
<b>START DATE</b> (this season)	11 <sup>th</sup> January 2016
<b>END DATE</b> (this season)	22 <sup>nd</sup> January 2016
<b>PREVIOUS WORK</b> (incl. DES ref.)	None
<b>MAIN (NARRATIVE) DESCRIPTION:</b> (May include information from other fields)	<p>AOC Archaeology undertook an archaeological evaluation in relation to a proposed housing development at at Glenalmond Road, Ratray Perthshire.</p> <p>The evaluation required a 10% trenching sample (5,800 linear metres) of the proposed 11.59 hectare development area. The area is currently used as arable land. Due to steep sloping ground along the northern site boundary and the presence of live services the total trenching undertaken amounted to 4,225 linear metres.</p> <p>Trenching revealed natural deposits of relatively free draining glacial sands and gravels cut by occasional modern drains aligned north-east to south-west. Numerous plough scars were observed. The natural was overlain by an improved plough-soil of organic red brown sandy loam. Pockets of colluvial silt were recorded in many of the trenches, with substantial deposits occurring at the base of sloping ground.</p> <p>No archaeologically significant features or material was recovered during the evaluation. Evidence of 19<sup>th</sup> century improvement occurred in the form of ceramics and glass which were observed in almost all of the trenches.</p>
<b>PROPOSED FUTURE WORK:</b>	None
<b>CAPTION(S) FOR ILLUSTRS:</b>	---
<b>SPONSOR OR FUNDING BODY:</b>	Springfield Properties PLC
<b>ADDRESS OF MAIN CONTRIBUTOR:</b>	Edgefield Road Industrial Estate, Loanhead, Midlothian, EH20 9SY
<b>EMAIL ADDRESS:</b>	admin@aocarchaeology.com
<b>ARCHIVE LOCATION</b> (intended/deposited)	Archive to be deposited in NMRS



**AOC Archaeology Group**, Edgefield Industrial Estate, Edgefield Road, Loanhead EH20 9SY  
tel: 0131 440 3593 | fax: 0131 440 3422 | e-mail: [admin@aocarchaeology.com](mailto:admin@aocarchaeology.com)

[www.aocarchaeology.com](http://www.aocarchaeology.com)