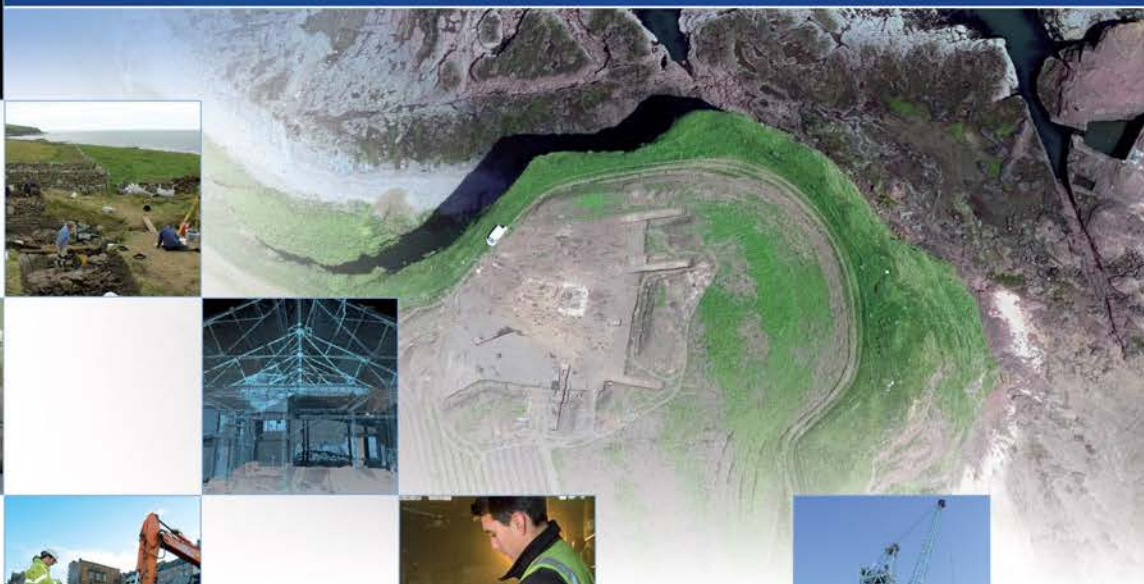


Larkhall (Phase 1), South Lanarkshire : Archaeological Evaluation Report

AOC Project 23372

11th April 2016



Larkhall (Phase 1), South Lanarkshire: Archaeological Evaluation Report

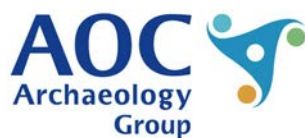
On Behalf of:	Persimmon Homes 180 Findochty Street Garthamlock Glasgow G33 5EP
National Grid Reference (NGR):	NS 7646 5238
AOC Project No:	23372
OASIS No:	1-247977
Prepared by:	Rob Engl
Illustration by:	Jamie Humble
Date of Fieldwork:	23rd – 25th March 2016
Date of Report:	11th April 2016

This document has been prepared in accordance with AOC standard operating procedures.

Author: Rob Engl	Date: 11th April 2016
Approved by: Diana Sproat	Date: 11th April 2016
Draft/Final Report Stage: Draft	Date: 11th April 2016

Enquiries to: AOC Archaeology Group
Edgefield Industrial Estate
Edgefield Road
Loanhead
EH20 9SY

Tel. 0131 440 3593
Fax. 0131 440 3422
e-mail. admin@aocarchaeology.com



www.aocarchaeology.com

Contents

	Page
List of Figures	1
List of Plates	1
List of Appendices	1
Summary	2
1 INTRODUCTION	3
1.1 Site Background	3
1.2 Site Location.....	3
1.3 Archaeological Background.....	3
2 OBJECTIVES	4
3 METHODOLOGY.....	4
4 RESULTS.....	5
5 CONCLUSIONS & RECOMMENDATIONS	6
6 REFERENCES	6
APPENDIX 1: Trench Descriptions	8
APPENDIX 2: Photographic Record	14
APPENDIX 3: <i>'Discovery and Excavation in Scotland'</i> Report.....	15

List of Figures

Figure 1: Site Location plan

Figure 2: Site plan showing location of archaeological evaluation trenches

Figure 3: Extract from 1st Edition Ordnance Survey map

Figure 4: Extract from 2nd Edition Ordnance Survey map

List of Plates

Plate 1: Pre-excavation shot from SE showing depression

Plate 2: Trench 1 showing edge of rubbish dump

Plate 3: Trench 1 west facing section through rubbish dump

Plate 4: Trench 17 post excavation shot

List of Appendices

Appendix 1: Trench Descriptions

Appendix 2: Photographic Record

Appendix 3: *'Discovery and Excavation in Scotland'* Report

Summary

This report presents the results of an archaeological evaluation undertaken by AOC Archaeology Group on behalf of Persimmon Homes, on a land plot located at Duke Street, Larkhall, South Lanarkshire. The evaluation was undertaken as the initial part of a phased programme of works required as a condition of the planning consent for the development.

The evaluation consisted of the machine trenching of 3940 m², 8% of the available development area. A total of 5,840 m² was originally required; however the presence of extensive mature tree cover along the northern and western boundaries, areas of standing water and live services reduced the area that could feasibly be evaluated.

The proposed development was situated in an area of undulating pasture.

Significant industrial activity had occurred within the area during the latter part of the 19th century. Within the Phase 1 area this was illustrated by the presence of a large rubbish dump containing ceramic material, glass, brick and cinder. The dump appeared to infill a cut depression possibly associated with 19th century industrial activity. With the exception of the dump neither significant archaeological features nor artefacts were encountered, and no further archaeological works are recommended, although this will have to be confirmed by the West of Scotland Archaeology Service, advisors to South Lanarkshire Council.

1 INTRODUCTION

1.1 Site Background

- 1.1.1 AOC Archaeology Group was commissioned by Persimmon Homes (Planning Application HM/13/0352) to carry out a phased programme of archaeological works prior to the construction of a residential development at Duke Street, Larkhall, South Lanarkshire (NGR: NS 7646 5238). The proposed development lies within the administrative area of South Lanarkshire Council, which is advised on archaeological matters by the West of Scotland Archaeology Service (WoSAS). The archaeological works were conducted in accordance with the principals set out in *Scottish Planning Policy* (2014) and *Planning & Archaeology* (2011) and in accordance with South Lanarkshire Council as advised by WoSAS.
- 1.1.2 The current evaluation forms Phase 1 of the archaeological works and takes in an area measuring 6.2 ha.
- 1.1.3 The evaluation revealed the remains of a late 19th century rubbish dump situated within the south-eastern corner of the site. No other archaeologically significant material or features were observed.

1.2 Site Location

- 1.2.1 The proposed development area consists of predominantly farmland lying to the northeast of Larkhall between the edge of the existing town and the M74. The Phase 1 site and Phase 2 site are separated by Duke Street, with Phase 1 centred on NGR: NS 7646 5238 and Phase 2 centred on NGR: NS 7675 5212 (Figure 1 & 2). The south portion of the Phase 2 site is partially occupied by farm buildings and is crossed by an access road to Skellyton Sewage treatment Works.



Figure 3: Extract from 1st Edition Ordnance Survey map

1.3 Archaeological Background

- 1.3.1 The development area is primarily greenfield with long use as farmland. However, the mid 19th century 1st Edition Ordnance Survey map shows 'Larkhall Colliery' with 'coal pit' partially overlying the northeast corner of Phase 1 area. The 1st Edition map also shows that the southern part of the Phase 2 contains parts of the 'Skellyton Brick and Tile Works' and its associated 'clay pit'. By the 2nd Edition Ordnance Survey map of around 1900 both of these industrial sites have gone replaced by what appears to be residential properties.

Occupying the part of the site of the Larkhall Colliery is 'Daisy Cottages' and outbuildings whilst to the south the 'Grange' lies on the site of the Skellyton Brick and Tile Works.

- 1.3.2 In 2014 there was a watching brief conducted on site investigation works within the Phase 2 area which oversaw the excavation of 260 testpits, 7 larger trenches and 4 soakaways. No significant archaeological remains were encountered (NMRS No. NS75SE 118)



Figure 4: Extract from 2nd Edition Ordnance Survey map

2 OBJECTIVES

- 2.1 The objectives of the archaeological works were to determine and assess the character, extent, condition, quality, date and significance of any buried archaeological remains situated within the proposed development area through evaluation trenching. Another objective was to advise and implement an appropriate form of mitigation, formulated with the approval of WoSAS, such as excavation (Stage 2), post-excavation analyses and publication (Stage 3), given the infeasibility of preserving the archaeological material *in situ*, should significant archaeological remains be encountered.

3 METHODOLOGY

- 3.1 The archaeological evaluation of the Phase 1 area was undertaken on 23rd – 25th March 2016 using an excavator fitted with a 2.2 m wide toothless ditching bucket. The area was originally measured at 7.3 ha, however this was an over estimation with the area available for evaluation measuring 6.2 ha. An 8% evaluation of the site was required, which would have equated to a total evaluation area of 5,840 m². However, the presence of mature tree cover along the northern and western boundaries, areas of standing water and live services reduced the area available for evaluation. Nevertheless a total of 3940 m² was excavated and good coverage of the available area was achieved (Figure 2). The evaluation was undertaken in generally dry conditions with good archaeological visibility. Trenches were recorded and subsequently backfilled and compacted.



Plate 1; Pre-excavation shot from SE showing depression



Plate 2; Trench 1 showing edge of rubbish dump



Plate 3; Trench 1 west facing section through rubbish dump

4 RESULTS

- 4.1 A site plan showing the location of trenches can be found in Figure 2. Where present, the topsoil consisted of a pale, poorly drained, clay loam ranging from 0.20 m to 0.40 m in depth. It contained significant amounts of anthropic material, with numerous fragments of white glazed ceramics, stoneware and bottle glass. This material may have originated within the late 19th century rubbish dump situated within the south-eastern corner of the site.



Plate 4; Trench 17 post excavation shot

- 4.2 The top-soil overlay a natural of pink boulder clay with occasional patches of shattered sandstone. The clay natural was occasionally scarred by modern ploughing. Clay field drains were recorded cutting the natural in several trenches. These were aligned north to south.
- 4.3 A late 19th century rubbish dump was recorded within the south-eastern corner of the site within Trenches two and three. This material ranged from 0.20 m to 0.40 m in depth and consisted of numerous pieces of brick, glass, stoneware, unmarked clay pipe and white tableware set within a matrix of ash and cinder. The dump appeared to infill a rectangular cut depression observed along the eastern site boundary. The depression measured 100 m north to south by 75 m east to west. The depression is possibly related to the 19th century industrial activity associated with the 'Larkhall Colliery' known to partially overlie the north-west corner of the site and visible on the 1st Edition Ordnance Survey map.
- 4.4 With the exception of the late 19th century rubbish dump. No other archaeologically significant material or features were recorded.

5 CONCLUSIONS & RECOMMENDATIONS

- 5.1 No significant archaeological finds or features were encountered and the area appears archaeologically sterile.
- 5.2 No further archaeological works are considered necessary within this phase of the development. This recommendation will require confirmation by WoSAS on behalf of South Lanarkshire Council.

6 REFERENCES

AOC Archaeology (2016) *Larkhall, South Lanarkshire. Archaeological Evaluation: Written scheme of Investigation*. Unpublished Client Report.

Scottish Government 2014 *Scottish Planning Policy*.

Scottish Government 2011 *PAN 2/2011 Planning and Archaeology*.

1864 Ordnance Survey 1st Edition Map. Lanarkshire Sheet XVIII

1898 Ordnance Survey 2nd Edition Map. Lanarkshire Sheet XVIII SW

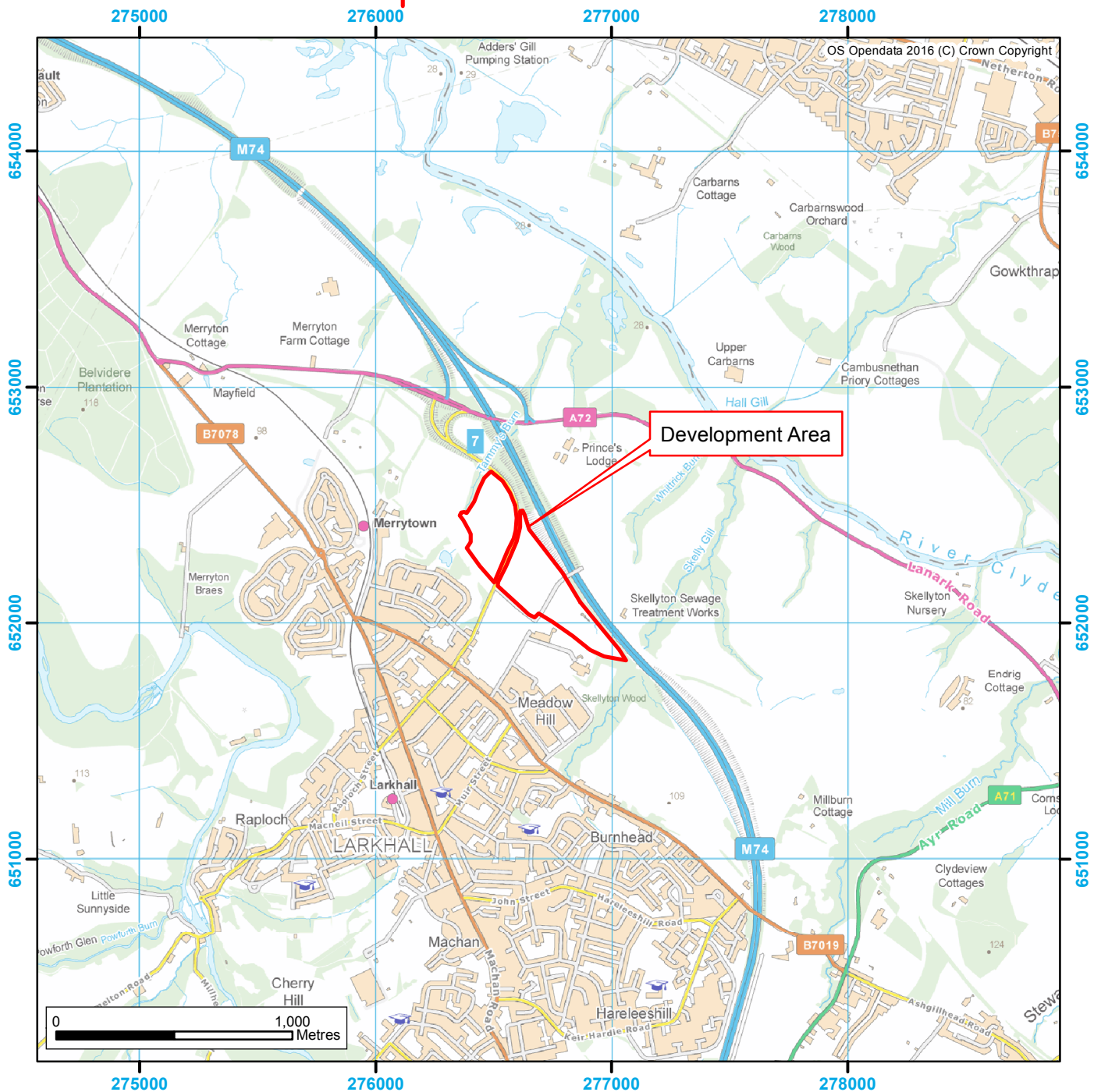
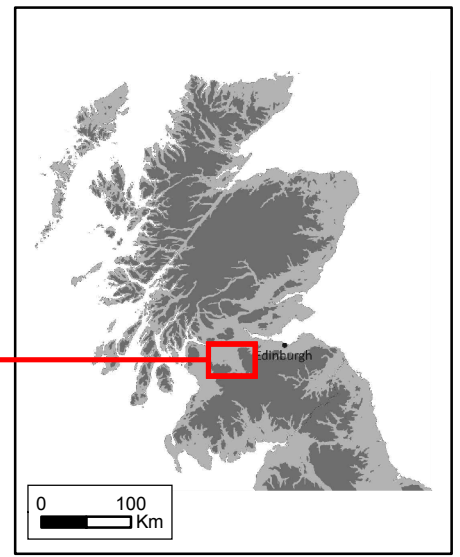
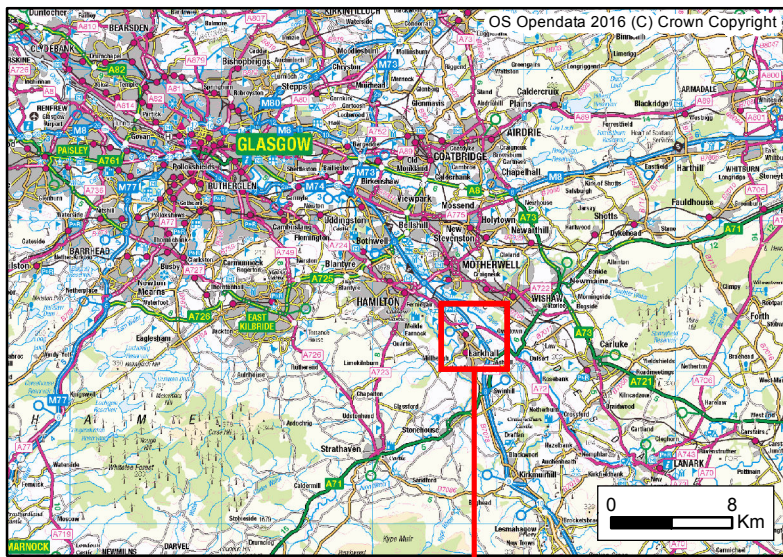
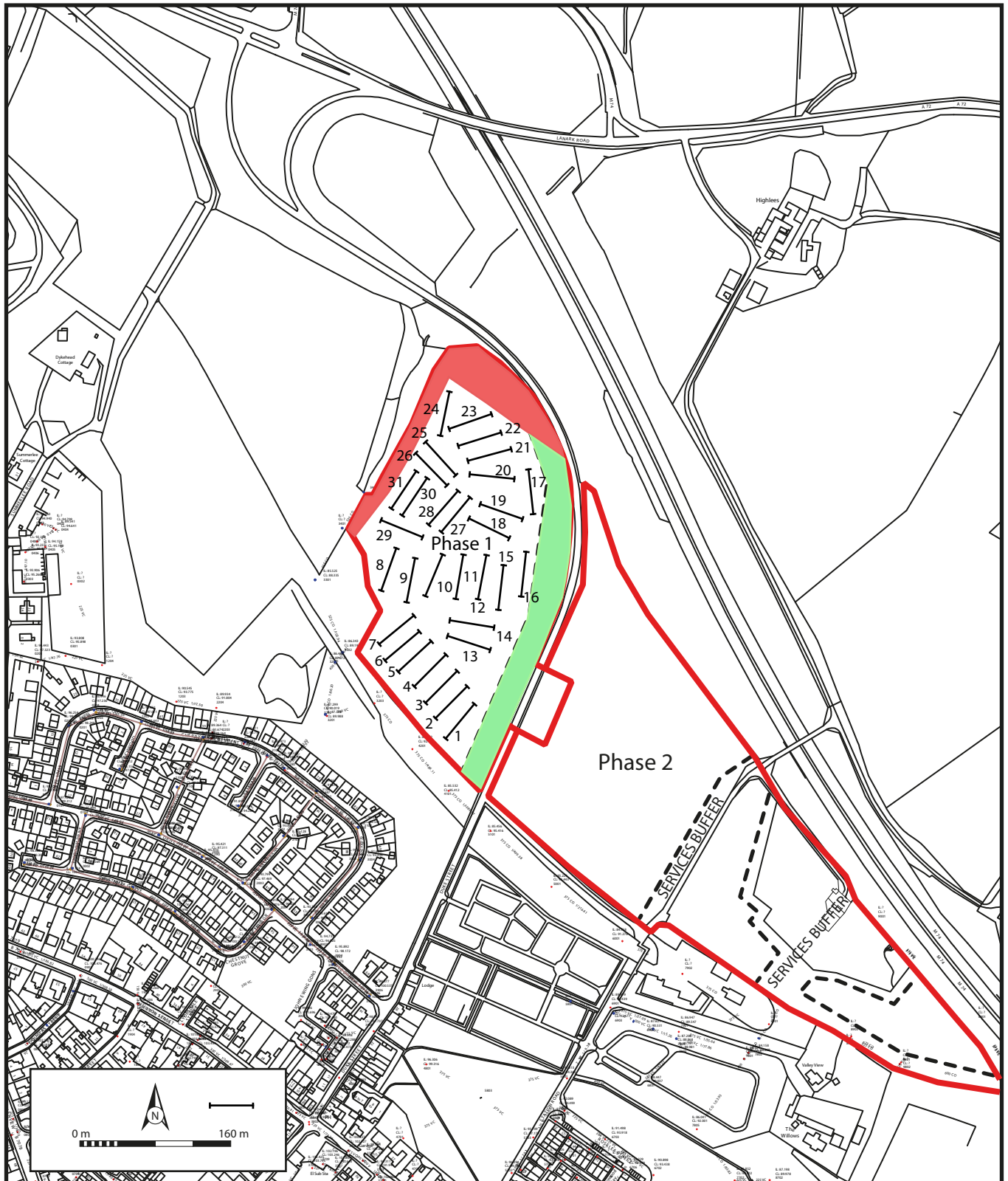


Figure 1: Site Location Plan



Key

- Services buffer
- Mature tree buffer
- Trench and number

Figure 2: Site plan location of archaeological evaluation trenches

Larkhall (Phase 1), South Lanarkshire Archaeological Evaluation Report

Appendices

APPENDIX 1: Trench Descriptions

Trench 1

<i>Dimensions</i>	55 m by 2.2 m
<i>Orientation</i>	SW/NE
<i>Depth of Topsoil</i>	0.20 m to 0.30 m
<i>Depth of Excavation</i>	0.30 m to 0.35 m
<i>Significant Features</i>	Late 19 th century rubbish dump situated at 20.0 m extends to end of trench. Dump is 0.40 m in depth. Consists of stoneware, tableware, clay pipe, brick and glass within matrix of cinder and ash.
<i>Other Features</i>	None
<i>Subsoil</i>	Pale pink brown compact boulder clay.
<i>Finds</i>	None

Trench 2

<i>Dimensions</i>	55 m by 2.2 m
<i>Orientation</i>	SW/NE
<i>Depth of Topsoil</i>	0.30 m to 0.35 m
<i>Depth of Excavation</i>	0.30 m to 0.35 m
<i>Significant Features</i>	Late 19 th century rubbish dump situated at 12.0 m extends to 42.0 m. Dump is 0.20 m in depth. Consists of stoneware, tableware, clay pipe, brick and glass within matrix of cinder and ash.
<i>Other Features</i>	None
<i>Subsoil</i>	Pale pink brown compact boulder clay.
<i>Finds</i>	Stoneware, tableware, clay pipe, brick and glass

Trench 3

<i>Dimensions</i>	55 m by 2.2 m
<i>Orientation</i>	SW/NE
<i>Depth of Topsoil</i>	0.20 m to 0.30 m
<i>Depth of Excavation</i>	0.30 m to 0.35 m
<i>Significant Features</i>	None
<i>Other Features</i>	None
<i>Subsoil</i>	Pale pink brown compact boulder clay.
<i>Finds</i>	Occasional stoneware, tableware, and glass

Trench 4

<i>Dimensions</i>	55 m by 2.2 m
<i>Orientation</i>	SW/NE
<i>Depth of Topsoil</i>	0.30 m to 0.40 m
<i>Depth of Excavation</i>	0.32 m to 0.45 m
<i>Significant Features</i>	None
<i>Other Features</i>	None
<i>Subsoil</i>	Pale pink brown compact boulder clay.
<i>Finds</i>	Occasional stoneware, tableware, and glass

Trench 5

<i>Dimensions</i>	55 m by 2.2 m
<i>Orientation</i>	SW/NE
<i>Depth of Topsoil</i>	0.40 m
<i>Depth of Excavation</i>	0.45 m
<i>Significant Features</i>	None
<i>Other Features</i>	None
<i>Subsoil</i>	Pale pink brown compact boulder clay.
<i>Finds</i>	Occasional stoneware, tableware, and glass

Trench 6

<i>Dimensions</i>	55 m by 2.2 m
<i>Orientation</i>	SW/NE
<i>Depth of Topsoil</i>	0.30 m
<i>Depth of Excavation</i>	0.35 m
<i>Significant Features</i>	None
<i>Other Features</i>	Clay drain at 30.0 m NE/SW
<i>Subsoil</i>	Pale pink brown compact boulder clay with occasional plough scars.
<i>Finds</i>	Occasional stoneware, tableware, and glass

Trench 7

<i>Dimensions</i>	55 m by 2.2 m
<i>Orientation</i>	SW/NE
<i>Depth of Topsoil</i>	0.30 m to 0.35 m
<i>Depth of Excavation</i>	0.35 m to 0.40 m
<i>Significant Features</i>	None
<i>Other Features</i>	None
<i>Subsoil</i>	Pale pink brown compact boulder clay.
<i>Finds</i>	Occasional tableware and glass

Trench 8

<i>Dimensions</i>	55 m by 2.2 m
<i>Orientation</i>	SW/NE
<i>Depth of Topsoil</i>	0.30 m
<i>Depth of Excavation</i>	0.35 m
<i>Significant Features</i>	None
<i>Other Features</i>	None
<i>Subsoil</i>	Pale pink brown compact boulder clay.
<i>Finds</i>	Occasional tableware and glass

Trench 9

<i>Dimensions</i>	55 m by 2.0 m
<i>Orientation</i>	SE/NW
<i>Depth of Topsoil</i>	0.35 m
<i>Depth of Excavation</i>	0.40 m
<i>Significant Features</i>	None
<i>Other Features</i>	None
<i>Subsoil</i>	Pale pink brown compact boulder clay.
<i>Finds</i>	Occasional modern white tableware/glass

Trench 10

<i>Dimensions</i>	55 m by 2.0 m
<i>Orientation</i>	SW/NE
<i>Depth of Topsoil</i>	0.35 m
<i>Depth of Excavation</i>	0.40 m
<i>Significant Features</i>	None
<i>Other Features</i>	None
<i>Subsoil</i>	Pale pink brown compact boulder clay.
<i>Finds</i>	Occasional modern white tableware/glass

Trench 11

<i>Dimensions</i>	50 m by 2.0 m
<i>Orientation</i>	SW/NE
<i>Depth of Topsoil</i>	0.35 m
<i>Depth of Excavation</i>	0.40 m
<i>Significant Features</i>	None
<i>Other Features</i>	Clay drain at 48.0 m NE/SW
<i>Subsoil</i>	Pale pink brown compact boulder clay.
<i>Finds</i>	Occasional modern white tableware/glass

Trench 12

<i>Dimensions</i>	50 m by 2.0 m
<i>Orientation</i>	SW/NE
<i>Depth of Topsoil</i>	0.35 m
<i>Depth of Excavation</i>	0.40 m
<i>Significant Features</i>	None
<i>Other Features</i>	None
<i>Subsoil</i>	Pale pink brown compact boulder clay.
<i>Finds</i>	Occasional modern white tableware/glass

Trench 13

<i>Dimensions</i>	50 m by 2.0 m
<i>Orientation</i>	W/E
<i>Depth of Topsoil</i>	0.35 m
<i>Depth of Excavation</i>	0.40 m
<i>Significant Features</i>	None
<i>Other Features</i>	None
<i>Subsoil</i>	Pale pink brown compact boulder clay.
<i>Finds</i>	Occasional modern white tableware/glass

Trench 14

<i>Dimensions</i>	50 m by 2.0 m
<i>Orientation</i>	W/E
<i>Depth of Topsoil</i>	0.35 m
<i>Depth of Excavation</i>	0.40 m
<i>Significant Features</i>	None
<i>Other Features</i>	None
<i>Subsoil</i>	Pale pink brown compact boulder clay.
<i>Finds</i>	Occasional modern white tableware/glass

Trench 15

<i>Dimensions</i>	50 m by 2.0 m
<i>Orientation</i>	S/N
<i>Depth of Topsoil</i>	0.35 m
<i>Depth of Excavation</i>	0.40 m
<i>Significant Features</i>	None
<i>Other Features</i>	None
<i>Subsoil</i>	Pale pink brown compact boulder clay.
<i>Finds</i>	Occasional modern white tableware/glass

Trench 16

<i>Dimensions</i>	50 m by 2.0 m
<i>Orientation</i>	S/N
<i>Depth of Topsoil</i>	0.40 m
<i>Depth of Excavation</i>	0.45 m
<i>Significant Features</i>	None
<i>Other Features</i>	None
<i>Subsoil</i>	Pale pink brown compact boulder clay.
<i>Finds</i>	Occasional modern white tableware/glass

Trench 17

<i>Dimensions</i>	50 m by 2.0 m
<i>Orientation</i>	SE/NW
<i>Depth of Topsoil</i>	0.32 m
<i>Depth of Excavation</i>	0.35 m
<i>Significant Features</i>	None
<i>Other Features</i>	None
<i>Subsoil</i>	Pale pink brown compact boulder clay.
<i>Finds</i>	Occasional modern white tableware/glass

Trench 18

<i>Dimensions</i>	50 m by 2.0 m
<i>Orientation</i>	SE/NW
<i>Depth of Topsoil</i>	0.35 m
<i>Depth of Excavation</i>	0.40 m
<i>Significant Features</i>	None
<i>Other Features</i>	None
<i>Subsoil</i>	Pale pink brown compact boulder clay.
<i>Finds</i>	Occasional modern white tableware/glass

Trench 19

<i>Dimensions</i>	50 m by 2.0 m
<i>Orientation</i>	SE/NW
<i>Depth of Topsoil</i>	0.35 m
<i>Depth of Excavation</i>	0.40 m
<i>Significant Features</i>	None
<i>Other Features</i>	None
<i>Subsoil</i>	Pale pink brown compact boulder clay with pockets of shattered sandstone.
<i>Finds</i>	Occasional modern white tableware, stoneware & glass

Trench 20

<i>Dimensions</i>	50 m by 2.0 m
<i>Orientation</i>	SE/NW
<i>Depth of Topsoil</i>	0.40 m
<i>Depth of Excavation</i>	0.45 m
<i>Significant Features</i>	None
<i>Other Features</i>	None
<i>Subsoil</i>	Pale pink brown compact boulder clay.
<i>Finds</i>	Occasional modern white tableware/glass

Trench 21

<i>Dimensions</i>	50 m by 2.0 m
<i>Orientation</i>	NE/SW
<i>Depth of Topsoil</i>	0.30 m
<i>Depth of Excavation</i>	0.35 m
<i>Significant Features</i>	None
<i>Other Features</i>	None
<i>Subsoil</i>	Pale pink brown compact boulder clay.
<i>Finds</i>	Occasional modern white tableware/glass

Trench 22

<i>Dimensions</i>	50 m by 2.0 m
<i>Orientation</i>	NE/SW
<i>Depth of Topsoil</i>	0.30 m
<i>Depth of Excavation</i>	0.35 m
<i>Significant Features</i>	None
<i>Other Features</i>	Clay drain at 5.0 m N/S
<i>Subsoil</i>	Pale pink brown compact boulder clay.
<i>Finds</i>	Occasional modern white tableware/glass

Trench 23

<i>Dimensions</i>	50 m by 2.0 m
<i>Orientation</i>	NE/SW
<i>Depth of Topsoil</i>	0.35 m
<i>Depth of Excavation</i>	0.40 m
<i>Significant Features</i>	None
<i>Other Features</i>	Clay drain at 0.0 m N/S
<i>Subsoil</i>	Pale pink brown compact boulder clay with occasional plough scars.
<i>Finds</i>	Occasional modern white tableware/glass

Trench 24

<i>Dimensions</i>	50 m by 2.0 m
<i>Orientation</i>	N/S
<i>Depth of Topsoil</i>	0.35 m
<i>Depth of Excavation</i>	0.40 m
<i>Significant Features</i>	None
<i>Other Features</i>	Clay drain at 2.0 m N/S
<i>Subsoil</i>	Pale pink brown compact boulder clay.
<i>Finds</i>	Occasional modern white tableware/glass

Trench 25

<i>Dimensions</i>	50 m by 2.0 m
<i>Orientation</i>	NE/SW
<i>Depth of Topsoil</i>	0.35 m
<i>Depth of Excavation</i>	0.40 m
<i>Significant Features</i>	None
<i>Other Features</i>	None
<i>Subsoil</i>	Pale pink brown compact boulder clay.
<i>Finds</i>	Occasional modern white tableware/glass

Trench 26

<i>Dimensions</i>	50 m by 2.0 m
<i>Orientation</i>	NW/SE
<i>Depth of Topsoil</i>	0.30 m
<i>Depth of Excavation</i>	0.40 m
<i>Significant Features</i>	None
<i>Other Features</i>	None
<i>Subsoil</i>	Pale pink brown compact boulder clay with occasional plough scars.
<i>Finds</i>	Occasional modern white tableware

Trench 27

<i>Dimensions</i>	50 m by 2.0 m
<i>Orientation</i>	NW/SE
<i>Depth of Topsoil</i>	0.30 m
<i>Depth of Excavation</i>	0.40 m
<i>Significant Features</i>	None
<i>Other Features</i>	None
<i>Subsoil</i>	Pale pink brown compact boulder clay with occasional plough scars.
<i>Finds</i>	Occasional modern white tableware/glass

Trench 28

<i>Dimensions</i>	50 m by 2.0 m
<i>Orientation</i>	N/S
<i>Depth of Topsoil</i>	0.30 m
<i>Depth of Excavation</i>	0.32 m
<i>Significant Features</i>	None
<i>Other Features</i>	None
<i>Subsoil</i>	Pale pink brown compact boulder clay and shattered bedrock.
<i>Finds</i>	Occasional modern white tableware/glass

Trench 29

<i>Dimensions</i>	50 m by 2.0 m
<i>Orientation</i>	E/W
<i>Depth of Topsoil</i>	0.30 m
<i>Depth of Excavation</i>	0.32 m - 0.40 m
<i>Significant Features</i>	None
<i>Other Features</i>	None
<i>Subsoil</i>	Pale pink brown compact boulder clay and shattered bedrock.

Finds Occasional modern white tableware/glass

Trench 30

Dimensions 50 m by 2.0 m
Orientation N/S
Depth of Topsoil 0.30 m
Depth of Excavation 0.35 m
Significant Features None
Other Features None
Subsoil Pale pink brown compact boulder clay.
Finds Occasional modern white tableware/glass

Trench 31

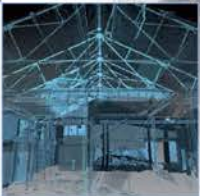
Dimensions 50 m by 2.0 m
Orientation N/S
Depth of Topsoil 0.30 m
Depth of Excavation 0.35 m
Significant Features None
Other Features None
Subsoil Pale pink brown compact boulder clay.
Finds Occasional modern white tableware/glass

APPENDIX 2: Photographic Record

Frame	Trench	Description	From
1-3	-	Registration shot	SE
4	Tr.1	Post excavation shot	NE
5	Tr.1	East facing section through rubbish dump	E
6	Tr.2	Post excavation shot	NE
7	Tr.3	Post excavation shot	NE
8	Tr.4	Post excavation shot	NE
9	Tr.5	Post excavation shot	NE
10	Tr.6	Post excavation shot	NE
11	Tr.7	Post excavation shot	NE
12	Tr.8	Post excavation shot	NW
13	Tr.9	Post excavation shot	NW
14	Tr.10	Post excavation shot	NW
15	Tr.11	Post excavation shot	NW
16	Tr.12	Post excavation shot	NW
17	Tr.13	Post excavation shot	E
18	Tr.14	Post excavation shot	E
19	Tr.15	Post excavation shot	N
20	Tr.16	Post excavation shot	N
21	Tr.17	Post excavation shot	NW
22	Tr.18	Post excavation shot	NW
23	Tr.19	Post excavation shot	NW
24	Tr.20	Post excavation shot	NW
25	Tr.21	Post excavation shot	SW
26	Tr.22	Post excavation shot	SW
27	Tr.23	Post excavation shot	SW
28	Tr.24	Post excavation shot	S
29	Tr.25	Post excavation shot	SW
30	Tr.26	Post excavation shot	SE
31	Tr.27	Post excavation shot	SE
32	Tr.28	Post excavation shot	S
33	Tr.29	Post excavation shot	W
34	Tr.30	Post excavation shot	S
35	Tr.31	Post excavation shot	S

APPENDIX 3: 'Discovery and Excavation in Scotland' Report

LOCAL AUTHORITY:	South Lanarkshire Council
PROJECT TITLE/SITE NAME	Larkhall (Phase 1), South Lanarkshire
PROJECT CODE:	AOC 23372
PARISH:	Larkhall
NAME OF CONTRIBUTOR:	Rob Engl
NAME OF ORGANISATION:	AOC Archaeology Group
TYPE(S) OF PROJECT:	Archaeological Evaluation
NMRS NO(S)	None
SITE/MONUMENT TYPE(S):	None
SIGNIFICANT FINDS:	None
NGR	NS 7646 5238
START DATE	23/3/2016
END DATE	25/3/2016
PREVIOUS WORK	None
MAIN (NARRATIVE) DESCRIPTION:	<p>This report presents the results of an archaeological evaluation undertaken by AOC Archaeology Group on behalf of Persimmon Homes, on a land plot located at Duke Street, Larkhall, South Lanarkshire. The evaluation was undertaken as the initial part of a phased programme of works required as a condition of the planning consent for the development.</p> <p>The evaluation consisted of the machine trenching of 3940m², 8% of the available development area. A total of 5,840m² was originally required; however the presence of extensive mature tree cover along the northern and western boundaries, areas of standing water and live services reduced the area that could feasibly be evaluated.</p> <p>The proposed development was situated in an area of undulating pasture.</p> <p>Significant industrial activity had occurred within the area during the latter part of the 19th century. Within the Phase 1 area this was illustrated by the presence of a large, shallow rubbish dump containing ceramic material, glass, brick and cinder. The dump appeared to infill a cut depression possibly associated with 19th century industrial activity. With the exception of the dump neither significant archaeological features nor artefacts were encountered, and no further archaeological works are recommended, although this will have to be confirmed by the West of Scotland Archaeology Service, advisors to South Lanarkshire Council.</p>
PROPOSED FUTURE WORK:	None
CAPTION(S) FOR ILLUSTRS:	None
SPONSOR OR FUNDING BODY:	Persimmon Homes
ADDRESS OF MAIN CONTRIBUTOR:	AOC Archaeology Group
EMAIL ADDRESS:	Admin@aocarchaeology.com
ARCHIVE LOCATION	NMRS



AOC Archaeology Group, Edgefield Industrial Estate, Edgefield Road, Loanhead EH20 9SY
tel: 0131 440 3593 | fax: 0131 440 3422 | e-mail: admin@aocarchaeology.com

www.aocarchaeology.com