

Broomhills Road, Edinburgh; Archaeological Monitored Top-soil Strip & Excavation Report

AOC 22560
14th April 2016



ARCHAEOLOGY

| HERITAGE

| CONSERVATION

Frogston Road East, Edinburgh: Archaeological Excavation

On Behalf of: BDW Trading Ltd & the Catchelraw Trust

National Grid Reference (NGR): NT 271980 676900

OASIS No: 1-249507

AOC Project No: 22560

Prepared by: Kevin Paton & Rob Engl

Illustration by: Jamie Humble

Date of Fieldwork: 15th March 2016 – 13th April 2016

Date of Report: 25th April 2016

This document has been prepared in accordance with AOC standard operating procedures.

Author: Rob Engl

Date: 25th April 2016

Approved by: Martin Cook

Date: 25th April 2016

Draft Report Stage: Draft

Date: 25th April 2016

Enquiries to: AOC Archaeology Group
Edgefield Industrial Estate
Edgefield Road
Loanhead
EH20 9SY

Tel. 0131 440 3593

Fax. 0131 440 3422

e-mail. admin@aocarcaeology.com

Contents

Page

List of Figures	3
List of Plates	3
List of Appendices.....	3
Summary	4
1 INTRODUCTION	5
1.1 Project Background	5
1.2 Site Location	5
1.3 Historical background	5
3 OBJECTIVES	7
3 METHODOLOGY	8
4 RESULTS	8
4.1 Archaeological Excavation	8
5 DISCUSSION & CONCLUSIONS.....	14
6 REFERENCES	15
6.1 Bibliographical references	15
APPENDIX 1: PHOTOGRAPHIC REGISTER	17
APPENDIX 2: CONTEXT REGISTER.....	23
APPENDIX 3: DRAWING REGISTER	36
APPENDIX 4: SMALL FINDS REGISTER	40
APPENDIX 5: SAMPLE REGISTER	40
APPENDIX 6: DISCOVERY AND EXCAVATION IN SCOTLAND (DES) REPORT	45

List of Figures

- Figure 1: Site Location Map
- Figure 2: Site Plan of Features
- Figure 2.1: Site Plan of Features NE
- Figure 2.2: Site Plan of Features SE
- Figure 3: Detail Plan of Kiln [038]
- Figure 4: Detail Plan of Hearth [004] & Post-holes

List of Plates

- Plate 1: Kiln [038] under excavation
- Plate 2: Kiln [038] post excavation
- Plate 3: Kiln [038] post-excavation showing flue [015-055]
- Plate 4: Stone Platform [046] from north
- Plate 5: Hearth [196] and associated post settings
- Plate 6: Group 1 Curvilinear Ditches from west
- Plate 7: Pit [004] from west

List of Appendices

- Appendix 1: Photographic Register
- Appendix 2: Context Register
- Appendix 3: Drawing Register
- Appendix 4: Small Finds Register
- Appendix 5: Sample Register
- Appendix 6: 'Discovery and Excavation in Scotland' (DES) Entry

Summary

AOC Archaeology Group was commissioned by BDW Trading Ltd & the Catchelraw Trust to undertake an archaeological top-soil strip and excavation at a land parcel situated at Frogston Road East, Edinburgh (NGR: NT 271980 676900).

The archaeological works sought to ascertain the extent, nature and identity of remains discovered during an archaeological evaluation conducted in March 2014. The top-soil strip cleared an area measuring approximately 100 m by 70 m along the western perimeter of the site. The evaluation revealed a suite of features including a circular, clay lined kiln, a truncated stone platform, a stone hearth with post built super-structure and numerous pits, postholes and curvilinear ditches. Small finds were largely absent and restricted to modern ceramics and a single small ceramic body shard of uncertain date. Based on form and existing archaeological parallels it is likely that the majority of the features are medieval/ post-medieval in date and represent the truncated remains of field systems and delineated activity areas. This will hopefully be clarified by post-excavation analyses.

Further archaeological works consisting of a programme of post-excavation analyses and publication are required as part of this phase of development.

1 INTRODUCTION

1.1 Project Background

- 1.1.1 AOC Archaeology Group was commissioned by BDW Trading Ltd & the Catchelraw Trust to undertake a programme of archaeological works consisting of an archaeological top-soil strip and excavation at Broomhills Road, Edinburgh as a condition of planning consent prior to development (planning ref: 13/02527/FUL). The proposed development lies within the administrative area of the City of Edinburgh Council, which is advised on archaeological matters by the City of Edinburgh Archaeology Service (CECAS). A programme of archaeological works had been specified by CECAS in keeping with the policies outlined in *Scottish Planning Policy (2014)* and *PAN 2/2011 Planning and Archaeology (2011)*.
- 1.1.2 The works followed on from a previous phase of archaeological works undertaken in 2015 by AOC Archaeology including an archaeological evaluation and metal detecting survey (Paton 2015). The metal detecting survey revealed a number of small finds including lead bale seals, dress fittings and coins relating to 17th to 19th century activity. The evaluation uncovered a number of features situated behind the cottages on Broomhills Road. These features were mainly intercutting curvilinear ditches set on various alignments all located to the immediate west of a large natural hollow. Given these archaeologically significant findings CECAS requested that a targeted monitored topsoil strip be undertaken around these features followed by hand excavation in order to preserve these archaeological features by record.
- 1.1.3 The monitored top-soil strip revealed a suite of features consisting of clay lined corn drying kiln, a truncated stone platform, a stone lined hearth and numerous pits, postholes and curvilinear ditches. Small finds were largely absent and restricted to a single small ceramic body shard of uncertain date. Based on form and existing archaeological parallels it is likely that the majority of the features are medieval/early post medieval in date. This will hopefully be clarified by post-excavation analyses.

1.2 Site Location

- 1.2.1 The proposed development area lies within three fields to the east of Broomhills Road and is immediately south of Frogston Road East (Figure 1; centred on NT 27198 67690). Burdiehouse Village is to the SE and the properties on Burdiehouse Road overlook the site from the east. Burdiehouse burn provides the southern boundary to the site.

1.3 Historical background

- 1.3.1 The proposed development area was subject to a desk-based assessment which comprised both analysis of the historical records and the cartographic material. Neither, the Royal Commission on Ancient and Historical Monuments of Scotland or the local Sites and Monuments Records list any known sites as lying within the development area.
- 1.3.2 *Prehistoric and Roman (10,000BC - AD410)*
- 1.3.2.1 While no known prehistoric or Roman remains or artefacts have been confirmed on the proposed development site itself, antiquarian sources cite a range of prehistoric or potentially prehistoric sites and artefacts within the vicinity. Although some of the locations are approximate, these sites appear to be focused to the west and northwest of the proposed development, suggesting concentration of prehistoric activity within the vicinity of Mortonhall. Prehistoric remains and artefacts reported at Mortonhall include a standing stone, a Celtic Brigantine scabbard of the late 1st Century AD, tumuli and 'the two Kaimes in which there have been various fortifications' (Whyte 1792).

1.3.2.2 Although undated a series of cropmarks identified through aerial photographs could potentially be prehistoric. The NMRS contains no details of a possible enclosure reported at Muirhouse and consequently it is not therefore possible to accurately interpret or date this feature.

1.3.3 *Early Historic (AD410 – AD1100)*

1.3.3.1 An Anglo-Saxon disc headed pin, was recovered by metal detector to the southwest of the proposed development in 2005.

1.3.4 *Medieval (AD1100 - AD1500)*

1.3.4.1 A fragment of a free-standing stone cross was recovered from a rockery within the garden of a house at Liberton in 1893. The location of this findspot is now lost and the NMRS is only able to locate it to the nearest 1km grid square.

1.3.4.2 St Catherine's balm well, extruding a black tarry substance derived from the underlying shale oils survives to the north of the proposed development. Although the Category B Listed well house is post-medieval, the origins of the well go back further, the first references to it relating to Queen Margaret (AD1045-93). In reality, curative associations attached to geological oddities such as this can go back much further, potentially into prehistory. Waters from the well were reportedly used to treat eczema as late as 1910. A chapel stood close to the well although no trace of it survives above ground.

1.3.4.3 Although the current Mortonhall dates to 1769 the estate itself is medieval, being granted by James III to Oliver Sinclair of Roslin in November 1486. Writing in 1792 Whyte notes '*a small eminence or rising ground*' near the present house which '*in earlier times... had been a moated stronghold with a drawbridge*' (Whyte 1792). Nothing now survives of this earlier castle.

1.3.5 *Post-medieval (AD1500 - AD1900)*

1.3.5.1 The line of a water culvert is shown extending from SSW to NNE across the extreme eastern edge of the development area on the First Edition 6 inch Ordnance Survey of 1855. The culvert formed part of a 15.3km aqueduct, known further north as the Crawley Tunnel, built to carry water onto the Royal Mile from the Glencorse Reservoir built in the Pentlands in 1822. However whilst the line of the aqueduct is clearly visible on the surface immediately southeast of the proposed development as it approaches the Burdiehouse Burn, after crossing the Burn on a distinctive stone bridge surmounted by an earthen bank, the line of the culvert is apparently truncated by a modern builders yard which cuts the bank. The conduit cannot be detected at ground level within the proposed development site and its survival is consequently uncertain.

1.3.5.2 Antiquarian sources record the site of Broomhill House to the southwest of the proposed development, within the fields to the north of the bypass. Writing in 1792 Whyte noted that '*South-east from Morton are the ruins of the house of Brownhill, once a place of strength. It is situated in a morass; it was surrounded by water, and the access to it was only by a drawbridge*' (Whyte 1792). Later sources cite some uncertainty about whether Broomhill House and Straiton Hall were separate properties.

1.3.5.3 A metal detecting survey undertaken on the site of a supposed Cromwellian Army Encampment to the west of the proposed development recovered a number of potentially 17th century artefacts, although none could be definitively associated with Cromwellian troops.

1.3.5.4 Mortonhall House and its associated gardens, structures and policies lie behind tree belts to the northwest of the proposed development. Constructed around 1769 and altered in the 1830's Mortonhall house is a large classical villa. The associated burial ground, terraces and fountain statue plinth are included within the house's Category A listing, whilst the walled garden is Category C listed. The stable court and granary which

are contemporary with the house are Category B listed, whilst the later kennels, factor's house and icehouse are Category C listed.

1.3.5.5 Two undesignated post medieval quarries are recorded at Burdiehouse, the first lay considerably to the east of the A701 and is recorded on the 2nd Edition Ordnance Survey Six inch of 1895. The second on the eastern edge of the proposed development site is recorded as a 'Gravel Pit' on the 1st Edition Ordnance Survey Six inch of 1855.

1.3.6 Modern (AD1900 - present)

1.3.6.1 Mortonhall Crematorium and Remembrance Chapel lies north of the proposed development on the southern bank of the Stenhouse Burn. Dating from 1967, the complex's Category A Listed is derived from the quality of its modernist architecture and the fame of its creator, the renowned Edinburgh Architect Sir Basil Spence. The unrelated 1, 3 and 4 Howdenhall Road, dating from 1934, at the start of Spence's career, is Category B Listed. An undesignated public cemetery lies to the west of the Crematorium.

1.3.6.2 The NMRS records a range of modern sites within 1km of the proposed development including World War II sites, the Straiton Transformer Station, a poultry house, a police call box, the Burdiehouse Primary School, the Straiton Mains Retail Park, contemporary public art as well as three demolished tower blocks.

1.3.6.3 A ditch encountered during a watching brief to the northwest of the proposed development contained 19th or 20th century pottery within its basal fill, suggesting it is modern in date.

1.3.6.4 In 2014 a 10% evaluation was undertaken of this entire c. 27 ha site with a total of 12,195 m of trenching excavated across the Broomhills Road development area (Paton, 2014). Despite the high level of plough scarring across the site, a cluster of shallow features was revealed at the W edge of site behind the cottages on Broomhills Road. The features were mainly curvilinear ditches set on various alignments all to the immediate west of a large natural hollow. Excavation of a percentage of the features did not reveal anything in terms of artefactual evidence but charcoal was found within each feature providing possibilities for use in carbon dating. Further north in an isolated position a large pit feature was also found, filled with deposits of heat affected soils. Again no artefacts were found but charcoal was evident within the pit deposits. It was on the basis of these findings that CECAS requested this current mitigation response of a targeted topsoil strip and excavation.

3 OBJECTIVES

2.1 The objectives of the present archaeological works were:

- to determine and assess the character, extent, condition, quality, date and significance of any buried archaeological remains within the targeted topsoil strip areas;
- identification, excavation, soil sampling and recording of all significant archaeological features within the targeted topsoil strip areas;
- the retrieval of a representative artefact assemblage;
- upon conclusion of any excavations, the preparation of a post-excavation research design (PERD) to be agreed with CECAS. The scope and appropriateness of the post-excavation analyses to be employed will be decided upon by CECAS. The PERD will be pertinent to the quantity, quality, character, date and condition of retrieved small finds and soil samples when considered against the series of research questions raised by the excavated features;
- the post-excavation analysis of recovered material;

- publication of results of the excavation to bring the findings into the public and academic domain.

3 METHODOLOGY

- 3.1 Based on the findings of the initial archaeological evaluation (Paton 2015) A *Written Scheme of Investigation* (AOC 2016) was agreed with CECAS which proposed that three areas within the proposed development area be subject to topsoil stripping and excavation. These comprised a 100 m by 80 m area, a 20 m by 20 m area and a section through an existing field boundary (within the middle of the field) as shown on Figure 2. The initial stripping of the areas sought to remove the overburden to natural drift geology or the first significant archaeological horizon. This was to be followed by the hand excavation of all exposed features.
- 3.2 The initial top-soil strip was undertaken with a 20 tonne tracked excavator using a 2.2m wide ditching bucket. Machine excavation was conducted in shallow units/spits through topsoil to the upper surface of the underlying geological deposits. All top-soil stripping was carried out under the supervision of an experienced archaeologist and was undertaken according to AOC Archaeology Group's standard operating procedures as detailed in the *Written Scheme of Investigation* (AOC 2016).
- 3.3 Following the surface cleaning of the top-soil stripped areas, all exposed archaeological features were subject to hand excavation. All structural features were fully excavated, with all linear features excavated to a minimum of 20%.

4 RESULTS

4.1 Archaeological Excavation

- 4.1.1 The works were conducted during March/April 2016. The weather conditions during the excavation varied between clear and dry and wet, however and overall archaeological visibility was good. All subject areas were successfully opened.
- 4.1.2 Topsoil across site consisted of a medium brown heavy clay loam. This ranged from 0.30 m in depth at the truncated western end of the site to 0.50 m in depth along the relatively low lying western edge. The western part of the excavation area also revealed a colluvial deposit of red brown sandy silt with occasional sub-angular stones. This material was present on the down-slope of the small rise situated along the eastern edge of the main area and represents localised hill-wash.
- 4.1.4 The removal of the top-soil and the colluvial deposits revealed a heavy clay sub-soil with small areas of gravel. Modern clay drains were in evidence across all three stripped areas aligned north to south.

4.2 Area 1 (100 m by 70 m)

4.2.1 Archaeological Features

- 4.2.2 The top-soil stripping of Area 1 revealed numerous substantial undated archaeological features including a circular clay lined kiln, stone hearth with associated post-holes, stone platform and numerous curvilinear ditches, pits and post-holes.



Plate 1: Kiln [038] under excavation



Plate 2: Kiln [038] post excavation



Plate 3: Kiln [038] post-excitation showing flue [015-055]

4.2.3 *The Kiln [038] & Flue [015-055] (Figure 3)*

- 4.2.3.1 A well made sub-circular, clay lined kiln with associated flue was recorded during the excavation (Plates 1-3, Figure 3). The kiln was composed of a large circular pit measuring 2.35 m east to west and 2.6 m north to south. The pit was 0.28 m in depth and was lined with a deposit of clay (071) 0.08 m thick. The kiln pit had near vertical sides and a flat base. A shallow cut for the likely removal of kiln material truncated the structure to the south-west. This measured 0.56 m south to north and 0.98 m east to west. The cut was filled by a deposit of grey/brown sandy silt (056) which contained inclusions of sub-angular stone and charcoal.
- 4.2.3.2 The excavation of the kiln revealed a basal fill of sandy silt (072) 0.20 m thick was revealed, this deposit produced occasional charcoal fragments and a single small degraded ceramic shard of unknown date (SF 7). A smaller deposit of more compact charcoal rich silt occupied the south-western corner of the structure. Overlying the basal fills was a deposit of charcoal and ash (040) 0.12 m thick. This deposit represents *in situ* burning and contained fragments of fired clay (SF 10). An apparent capping deposit of clay (039) covered the

majority of the kiln pit [038]. This deposit was 0.15 m thick and contained frequent inclusions of fired clay (SF 9). It is possible that this deposit represents the collapsed roof of the structure.

4.2.3.3 A large, truncated curvilinear flue [015-055] was identified running into the northern edge of the kiln. This feature was 4.89 m in length and 0.78 m in width with a maximum depth of 0.26 m. The flue curved towards the north-west where it ended with a rounded terminus. The flue though shallow was steep sided with a concave base getting flatter and narrower as it entered the kiln opening. The flue was filled by a grey/brown sandy silt (016). This deposit contained numerous fragments of charcoal and lumps of fired and heat affected clay.

4.2.3.4 Although a single piece of pot was recovered from the fill of the feature, no diagnostic and datable material was recovered. However, given the features form and location, the kiln is likely to be associated with grain drying and is of probable medieval/post medieval date.



Plate 4: Stone Platform [046] from north

4.2.4 *Stone Platform [046], associated Stone Foundation [044-045] & Post Setting [065]*

4.2.4.1 The remains of a small sub-rectangular stone platform measuring 1.5 m by 1.2 m was recorded within the centre of Area 1. This feature consisted of a single course of unbounded sub-rounded stones set within the remains of an old plough soil (043) 0.15 m to 0.30 m in depth. This deposit contained animal bone (SF 05) and ceramic material of 18th-19th century date. The remains of a possible stone wall foundation [044-045] was recorded along the eastern part of the platform. This was composed of several sub-angular stone slabs 0.60 m in width. A small post setting [065] measuring 0.45 m by 0.35 m was revealed at the north-western edge of the platform. The setting was 0.20 m in depth and contained several packing stones and a fill of grey/brown silt.



Plate 5: Hearth [196] and associated post settings

- 4.2.5 *Stone Hearth [196], Pit [199-202] and associated Post-holes [131-174-164-170-187-177-179-184-187-190-194-197-199-229]*
- 4.2.4.1 The removal of an old plough soil (132) revealed the remains of a stone hearth [196] situated in close association with a collection of 12 post-holes and a pit [202] (Figure 4). Three of the post-holes were located to the south of the hearth [177-179-184], with the remainder of the post-holes lying to the north. The hearth lay within a shallow depression that also contained the pits [199-202]. The hearth consisted of several relatively flat sub-angular stones (228) set within a shallow, oval pit [196] measuring 1.10 m by 0.80 m. The majority of the stones appeared heat affected. The hearth cut had moderately sloping sides and a gently rounded base with a maximum depth of 0.20 m. The upper fill of the hearth pit [196] consisted of grey/brown silty sand that spread across the depression and also formed the fill (203) of Pit [202]. Therefore it is likely that both cut features were open at the same time. A primary fill of organic charcoal rich silt (198) was recorded within the hearth. This deposit was 0.04 m thick. The pit [202] situated in the western part of the depression was oval in plan, measuring 0.50 m by 0.40 m and having a depth of 0.15 m. The pit was flat based with moderately sloping sides. A further cut feature [199] was recorded within the north-east of the depression. This post-hole measured 0.30 m by 0.20 m with a depth of 0.15 m. Several packing stones (201) were removed from the sterile fill (200).
- 4.2.4.2 A further eight post-holes [187-174] were recorded lying to the north of the depression with two further post-holes [177-184] set to the south; all were in close proximity to the hearth. These features appeared to be aligned in a linear arrangement and would appear to form a rectangular superstructure associated with the hearth. A further post-hole [179] was located to the south forming an apsidal end. The superstructure measured 4.0 m north to south by 1.40 m east to west. The post-holes ranged from sub-circular to sub-rectangular in plan with dimensions ranging from 0.25 m to 0.50 m and depths of 0.05 m to 0.20 m. Sub rounded and sub-angular packing stones were present in the majority of the fills.
- 4.2.4.3 No diagnostic material was recovered from the feature. The hearth and associated post-built super structure may be associated with the drying of grain and is most probably of medieval/post-medieval date.



Plate 6: Group 1 Curvilinear Ditches from west

4.2.5 *Curvilinear and Linear Ditches*

4.2.5.1 The most numerous features found within Area 1 were a series of truncated curvilinear and linear ditches. These features were more common across the north of the area where they were closely grouped, with only a few severely truncated examples surviving in the west. The majority of the ditches were aligned north-east to south-west although several examples ran north to south and east to west. Generally no diagnostic material was recovered from these features, although tiny fragments of white ceramic were observed in some.

4.2.5.2 *Group 1* [07-013-018-020-022-024-036-047-049-050]

4.2.5.2.1A dense cluster of intercutting curvilinear ditches were excavated within the northern end of Area 1. With the exception of Ditches [07-013-018] these features ran from the north-east to the south-west and formed two larger intercut features. The smaller of these consisted of Ditches [047-049-050] and ran for a total of 16.0 m in length branching within their central portion. The ditches were broadly 'U' shaped in profile and ranged from 0.30 m to 0.50 m in width, with gently sloping sides and rounded bases. The depths of the ditches were uniformly shallow ranging from 0.05 m to 0.10 m. As with the majority of the ditches occurring across the site these features were filled with deposits of grey/brown clay silt containing inclusions of small sub-angular stones and flecks of charcoal. The similarities of the fills made detailing the exact relationships of the ditches very difficult. The ditches ran together at both the north-eastern and south-western ends forming rounded terminals.

4.2.5.2.2A second larger cluster of ditches [020-022-024-026-036-097-099-119-133] was also arranged on a north-east to south alignment. These ditches were again largely intercutting with similar broad, shallow 'U' shaped profiles ending in rounded terminals. The ditches ranged from 0.50 m to 0.80 m in width and from 0.05 to 0.30 m in depth and ran for a total of approximately 52.0 m. As with the other ditches these features contained homogenous fills of largely sterile clay silt.

4.2.5.2.3A third cluster of ditches [007-013-067-069] again with similar profiles, fills and dimensions were recorded set on a rough north to south-west alignment. These features appeared to be cut by ditches [020-022].

4.2.5.3 *Group 2* [028-030-041-032-059-063-061]

4.2.5.3.1A further grouping of seven narrow interconnected curvilinear ditches were recorded lying between groupings 1 and 3. These ditches ranged from 9.0 m to 32.0 m in length and were roughly orientated north to south and east to west. Again the ditches provided shallow, truncated 'U' shaped profiles which ranged from 0.05 m to 0.25 m in depth.

4.2.5.4 *Group 3* [073-075-085-088-213-105-107-113-213]

- 4.2.5.4.1 This grouping was situated to the south of Group 2 and consisted of several truncated linear ditches [107-113-213-105-075] and three more substantial curvilinear examples [085-088-075]. The linear features ranged from 3.0 m to 6.0 m in length and were set on both east to west and north to south alignments. Again these ditches were filled by deposits of clay silt and presented shallow, broad profiles with gently sloping sides, rounded bases and rounded terminals. The ditches ranged from 0.30 m to 0.70 m in width and from 0.07 m to 0.20 m in depth.
- 4.2.5.4.2 The most substantial feature of this grouping was formed by the curvilinear ditches [085-088]. These features were conjoined forming a large 'U' shaped enclosure measuring 6.0 m north to south by 15.0 m east to west. As with the other ditches within the grouping these features provided similar dimensions, fills and profiles.
- 4.2.5.4.3 A third curvilinear ditch [075] was recorded at the northern edge of the grouping running from the south-east to the south-west. This feature cut the linear [073]. The ditch was 12.10 m in length with a width of 0.60 m and a maximum depth of 0.14 m. A lead object (SF 12) was recovered from the fill.
- 4.2.6 *Group 4* [147-144-129-137]
- 4.2.6.1 Four truncated narrow curvilinear ditches were recorded at the far southern end of the Group 1 ditch cluster. These features were placed on various alignments. The ditches ranged between 2.50 m and 7.0 m in length with widths between 0.50 m and 0.20 m. As with the other ditch features the Group 4 features were shallow and 'U' shaped in profile.
- 4.2.7 *Group 5* [220-222-224-226]
- 4.2.7.1 A further four curvilinear features were located at the southern end of the area. These ranged between 1.50 m to 7.0 m in length and were heavily truncated. The ditches were aligned north to south and north-east to south-west.
- 4.2.8 Pits and Post-hole Features [217-095-125-111-109-117-115-127-103-093] & [135-159-161-149-151-167-153-155]
- 4.2.8.1 A total of 18 pits and post-holes features were recorded in two rough clusters situated either side of the curvilinear ditches [085-088]. Eight pits/post-holes were located to the south of the ditches. These features were oval and circular in plan and arranged in two small arcs [151-153-167-155] & [135-159-161]. An isolated pit/post-hole was located to the west of these features. The pits/post-holes was relatively shallow and truncated ranging from 0.08 m to 0.17 m in depth, and with diameters of 0.30 m to 0.59 m. The features produced 'U' shaped profiles with gently sloping sides and round bases. As with the curvilinear ditches the pit/post-holes contained homogenous fills of clay silt with occasional inclusions of stone and charcoal.
- 4.2.8.2 The larger of the clusters was located to the north of the curvilinear ditches [085-088]. Two of these features [093-103] were set within the possible interior of the enclosure formed by these ditch cuts. A further two pits/post-holes were located between the curvilinear ditches [075-097] and [119-133]. It is possible that these were part of gate features between activity areas.
- 4.2.8.3 Two larger pits [117-127] were recorded within this area. These features were sub-rectangular in shape with sharp steeply sloping sides and concave bases. The pits ranged from 1.35 m to 1.6 m in length and from 0.8 m to 0.90 m in width. Both pits appeared truncated with depths of 0.25 m and 0.33 m respectively. These features were identified as fire pits with both containing fills of charcoal rich organic clay silt.
- 4.2.8.4 Four smaller isolated circular pit/post-hole features [109-111-115-125] were also recorded.
- 4.2.8.5 A large oval pit [217] measuring 3.0 m by 3.5 m was recorded to the north of the Group Three features. This pit was 0.5 m in depth and contained two fills (218-2019) the primary fill (219) of which produced substantial amounts of fired clay similar to that recovered from the clay lined kiln [038]. It is therefore likely that the pit was associated with the function of the kiln.

4.3 Area 2 (20 m by 20 m)

4.3.1 Archaeological Features

- 4.3.2 A single large sub-circular pit [004] was recorded within Area 2. This feature measured 7.15 m by 5.5 m with a maximum depth of 0.23 m. The pit was heavily truncated with moderately sloping sides and a gentle concave base. The pit was filled by a primary deposit of dark brown ashy silt and re-deposited clay (006) and an upper fill of grey silty clay with occasional charcoal inclusions. No small finds were recovered from the fills. It is likely that the feature represents an abandoned quarry or clay pit of post medieval date.



Plate 7 Pit [004] from west

4.4 Area 3 (20 m by 20 m)

4.4.1 Archaeological Features

- 4.4.2 No archaeologically significant features were recorded.

5 DISCUSSION & CONCLUSIONS

- 5.1 The stripping and excavation of Areas 1-3 revealed that the area had undergone a significant degree of truncation. This affected almost all of the features that were revealed within the targeted areas. Nevertheless, elements of substantial archaeology were identified. The features would appear to form the remains of an industrial or agricultural processing area most probably associated with grain production. The lack of dateable small finds on the site is problematic and throws the weight of evidence back onto the nature and structural form of the features themselves. With this in mind a medieval/post medieval date for the remains would appear most probable for at least some of the features.
- 5.2 Circular, clay lined, key-hole shaped kilns were a common feature within the rural landscape of medieval and pre improvement Scotland, with every substantial farm or group of farmsteads having their own example (Fenton 1978). Excavations at Abercairny and Capo in Aberdeenshire (Gibson 1989), Newbridge (Engl & Dunbar forthcoming) and Inverness (Ellis 2002) have produced dates for such features from as early as the 11th and 13th centuries. On the Scottish mainland such kilns were generally sited away from the homestead probably to limit accidental conflagrations.
- 5.3 The Broomhills Road kiln was partially lined with clay with little evidence of repeated use. The numerous deposits of fired clay retrieved from the main fill are the possible remains of a domed clay roof however; it is more likely that they are related to the over roasting or burning of drying crops (Fenton 1978, 380) which may have partially degraded the structure leading to periodic renewal. The cleared out remains would appear to have been partially disposed of within the large pit [217] situated to the south of the kiln.

- 5.4 It is likely that the stone hearth and associated post-settings were also associated with the processing of grain and it is possible that this may relate to an earlier medieval phase of activity. The truncated stone platform [046] is stratigraphically later than the majority of the features on site, resting as it does on an earlier agricultural soil. It is likely that this is the remains of an agricultural building of post-medieval date.
- 5.5 The curvilinear ditch features and associated pits and post-holes are the most common of the recorded features, and although intercutting, and demonstrating some stratigraphic relationship, are more difficult to date. These features were almost all filled with single, homogenous deposits of grey sandy clay which most probably relate to a later plough soil. It is likely therefore that the majority of the features were open until the medieval or post-medieval period. The curvilinear ditches appear to be the remains of boundary ditches or drains repeatedly re-cut within the same delineated areas. Analogy for such sites is still relatively uncommon, but over the last twenty years with the development of commercial led archaeology, far more sites have been excavated. For example, recent excavations at Kinross High School revealed a prehistoric to medieval activity site, with linear boundaries and a dark age kiln (Cathcart 2008). Similarly, two excavations at Newton Farm, Carnoustie identified a medieval and post-medieval field system with pit groups (Suddaby 2009; White et al 2009). More recent excavations at Newton, South Lanarkshire (Engl a forthcoming) and Greenan (Engl b forthcoming) have revealed similar arrangements of curvilinear ditches and features associated with post-medieval agricultural activity.
- 5.6 Given the nature and relative importance of the archaeology revealed during the top-soil strip a programme of post excavation analyses and academic publication is recommended. This will require confirmation by, and be at the discretion of, John Lawson of CECAS.

6 REFERENCES

6.1 Bibliographical references

AOC Archaeology 2016 Broomhills Road, Edinburgh: Written Scheme of Investigation. Unpublished Client Report.

AOC Archaeology 2015 Broomhills Road, Edinburgh: Archaeological Excavation Data Structure Report. Unpublished Client Report.

AOC Archaeology 2014 Broomhills Road, Edinburgh: Desk Based Assessment. Unpublished Client Report.

Cathcart, R 2009 'Excavations at Kinross', Tayside and Fife Arch Journ, 27-56

Ellis C 2002 'Excavation of two ditches and a medieval grain-drying kiln, Highland' *Proc Soc Antiq Scot*, 132 (2002), 425-437

Engl a forthcoming Greenan: The Excavation of a multi-phased landscape in Ayr

Engl b forthcoming Newton: The Rediscovery of a Lost Rural Settlement near Cambuslang, South Lanarkshire

Fenton , A 1978 *The Northern Isles: Orkney and Shetland*. Edinburgh

Scottish Government 2014 *Scottish Planning Policy*.

Scottish Government 2011 *PAN 2/2011 2/2011 Planning and Archaeology*.

Suddaby, I and Anderson S 2009 'A Post-medieval enclosure with associated field system at Newton Farm, Carnoustie, Angus'. Tayside and Fife Arch Journ 73-80.

White, R, Richardson, P and O'connell, C 2009 'Prehistoric pit clusters and a rectilinear enclosure at Newton Road, Carnoustie, Angus' Angus'. Tayside and Fife Arch Journ 1-22.

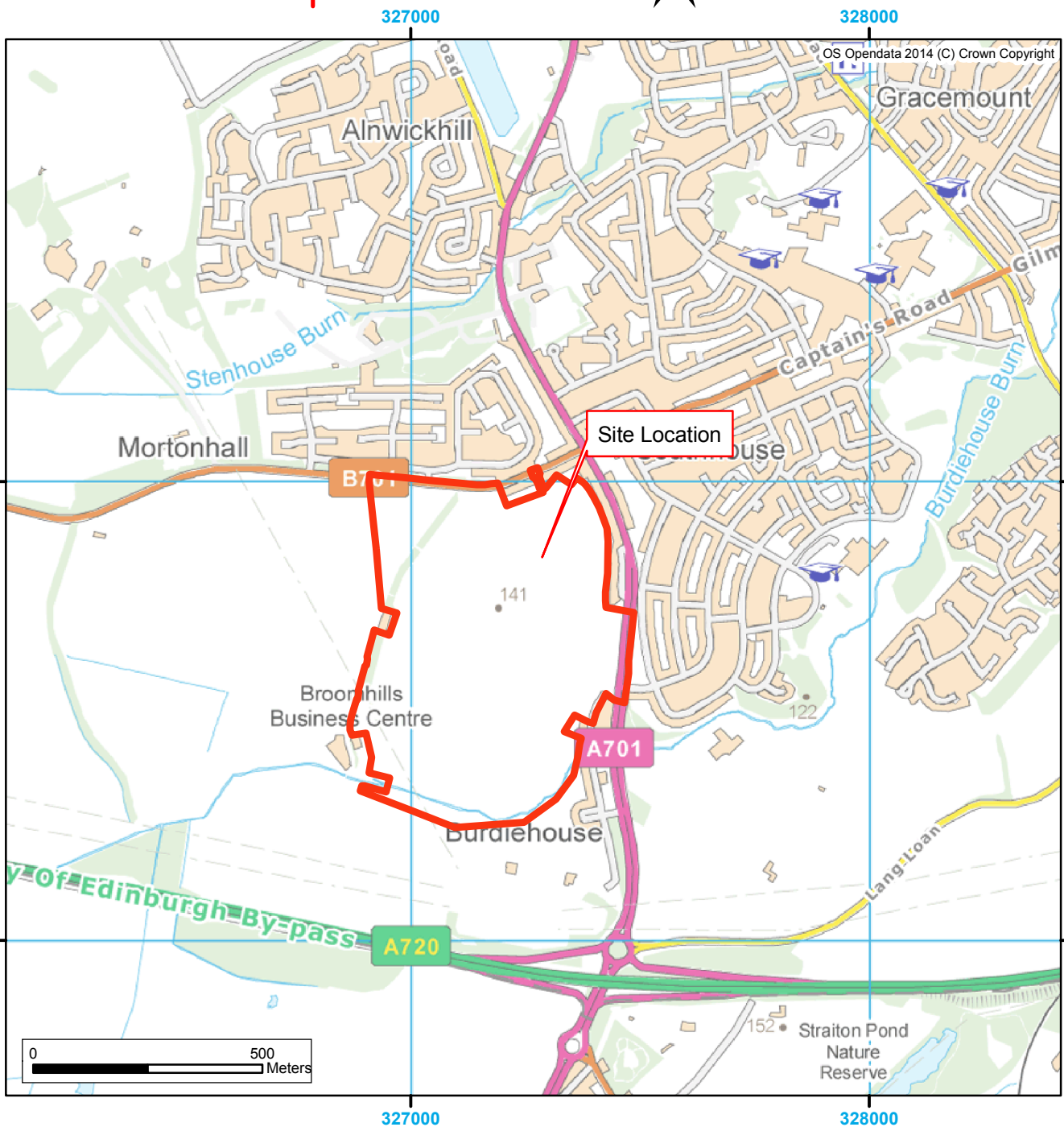
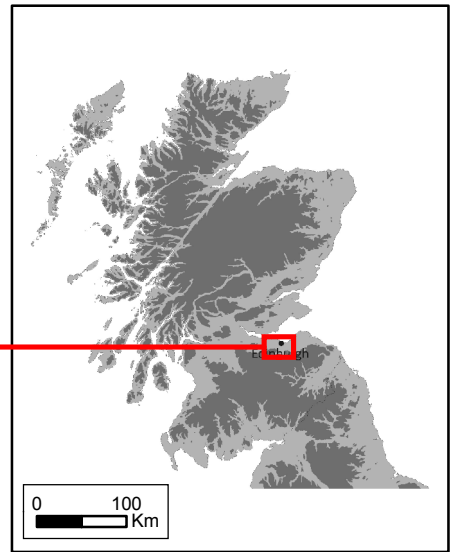
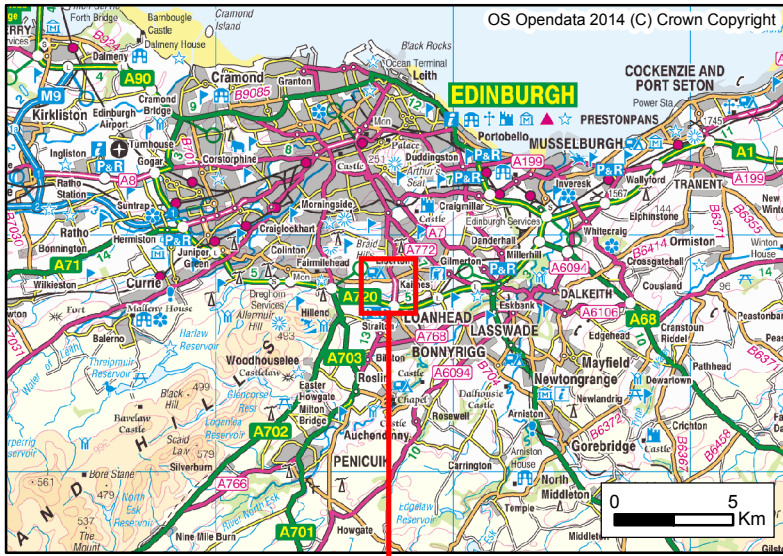


Figure 1: Site Location Plan

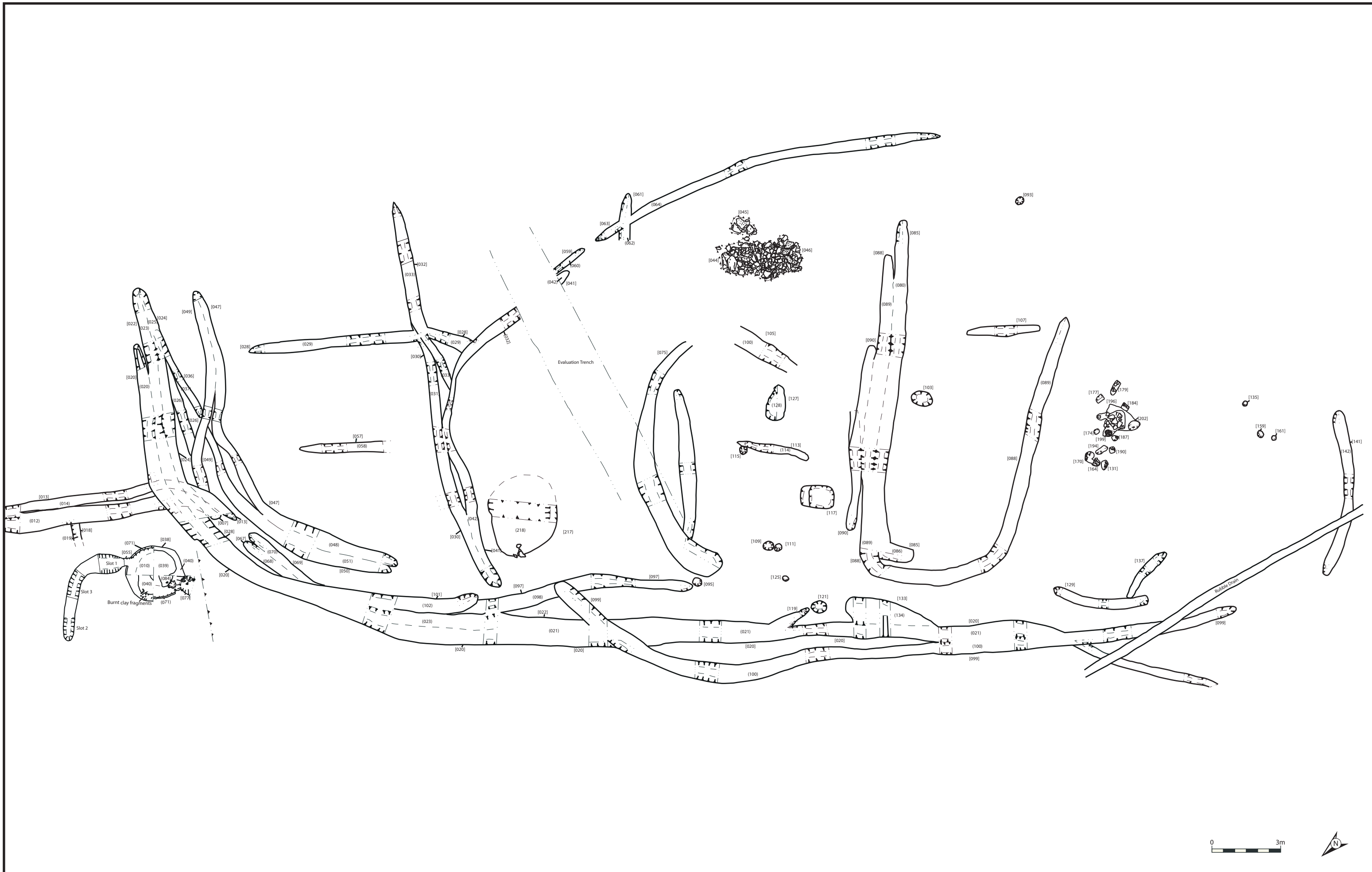


Figure 2: Site Plan of Features

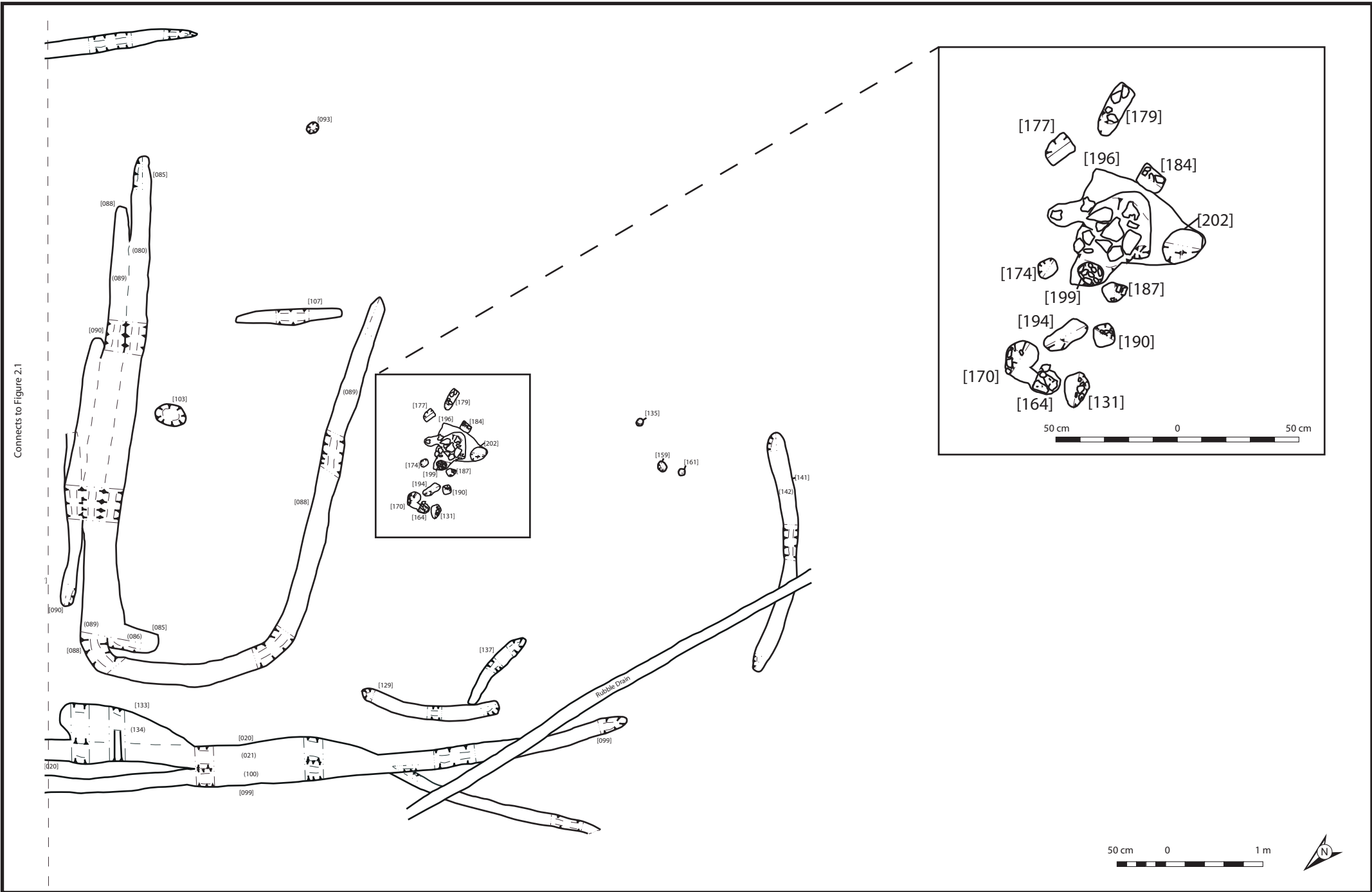



Figure 2.2: Site Plan of Features SE 

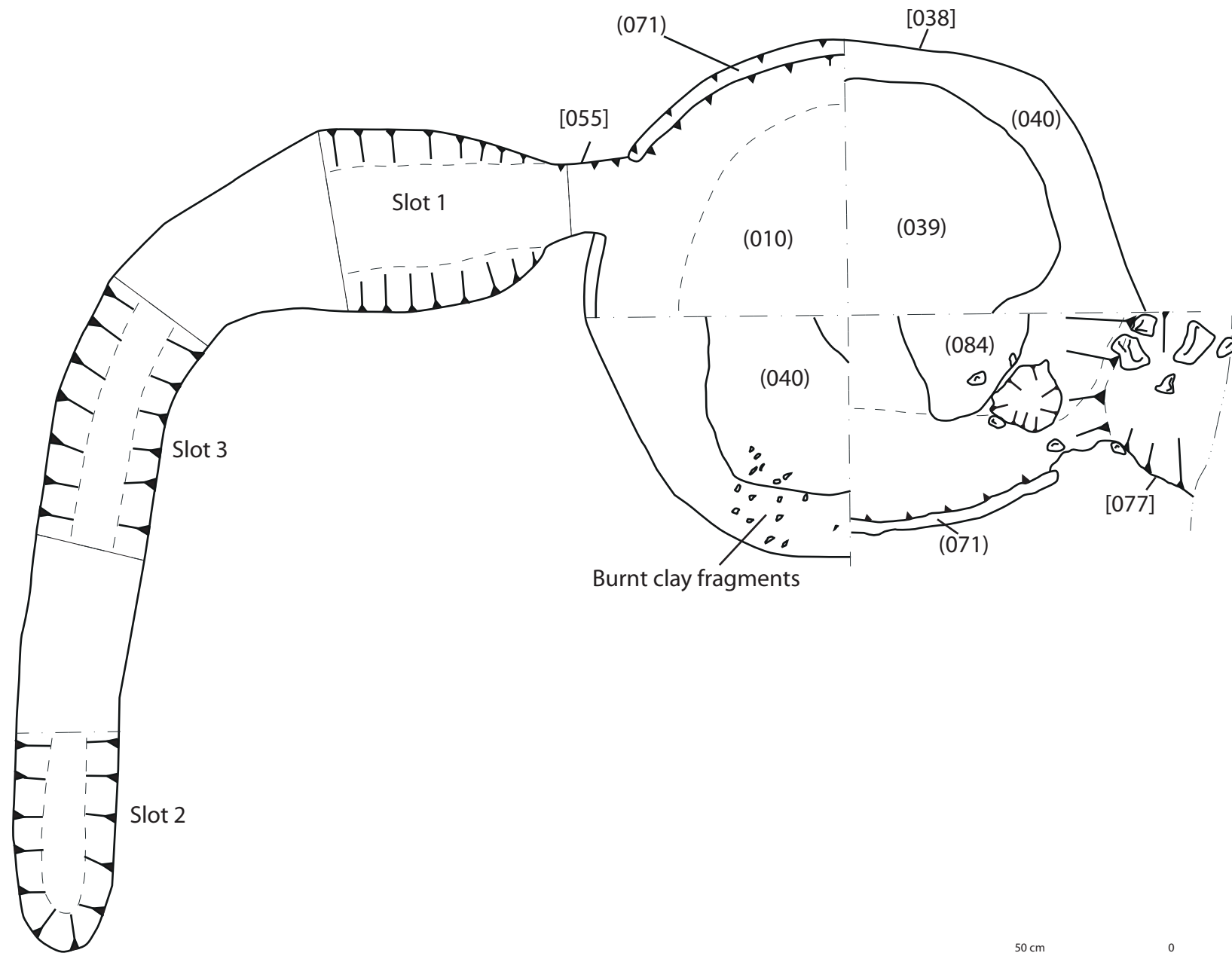


Figure 3: Detail Plan of Kiln [038]

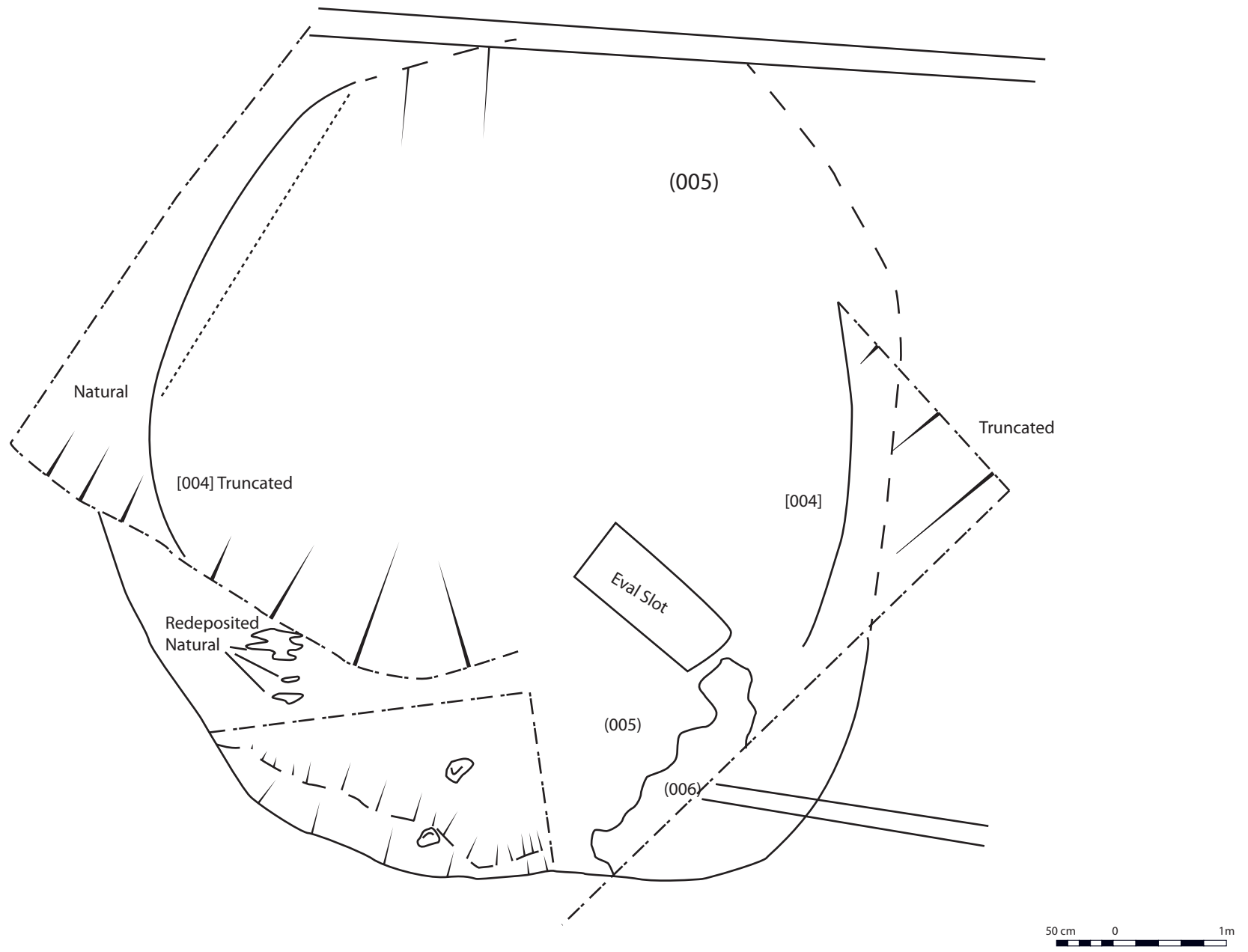


Figure 4: Detail Plan of Hearth [004] & Post-holes

APPENDIX 1: PHOTOGRAPHIC REGISTER

Colour Digital:

No.	Trench	Description	Taken From
1-3		View of excavation area	SW
4		View of W edge stripped	S
5		View of area of S of fence	SW
6-8		View of excavation area	NE
9-12		Detail view of W edge showing drains	Var
13-15		S edge stripped	Var
16-19		Next 10m from W edge stripped	Var
20		Furrow 1m above area	N
21	T2	Large pit in T2 after stripping	W
22-23	T2	T2 filled with water – pre-ex	Var
24	T3	View of T3	W
25	T3	Plough oil in T3 thought to be ditch	NW
26	T2	SE facing section of pit [004]	SE
27	T2	SW facing section of pit [004]	SW
28	T2	View of pit [004] Post-ex	S
29	T2	View of pit [004] Post-ex rest of feature flooded	W
30	T2	View of pit [004] Post-ex no string	S
31	T2	View of pit [004] Post-ex no string	W
32-33		Area to N of pit and ditch stripped	W
34		S facing section of ditch [007] – Slot 1	S
35		N facing section of ditches [007] – Slot 2 + [013] – Slot 1	N
36-37		E + N facing section of Slot 3 Ditch [007] + [018]	E-N
38		N facing section of ditches [007] – Slot 4 + [013] – Slot 2	N
39		E facing section of ditches / flue [015]	E
40		Pit [017] + ditch [015]	S
41-42		E facing section of ditch [015]	SE
43		E facing section of ditch [018]	E
44-45		E + N facing sections of ditches [013] + [020]	E-N
46-47		W + N facing section of ditches [007] + [020]	W-N
48		W facing section of ditches [020], [022], [024] + [026]	W
49		W facing section of ditches [020], [022] + [024]	W
50		W facing section of ditch [026]	W
51-52		W facing section of ditch [036] – Slot 1 + Slot 2	W
53		E facing section of ditches [022] + [026] – Slot 1	E
54		N facing section of ditch [028] – Slot 2	N
55		W facing sections of relationship slots [028] + [030] – [028] + [032]	W
56		N facing section of relationship slot [028] + [030]	N
57		SE facing section of relationship slot [028] + [032]	SE
58		NE facing section of ditch [028] – Slot 3	NE
59-60		SE+NE facing sections of relationship slot [028] + [041]	SE +NE
61		E facing section of ditch [032] – Slot 1	E
62		N facing section of ditch [028] – Slot 1	N
63		N facing section of ditch [020] – Slot 1	N

64		E facing section of ditch [020] – Slot 1	E
65+67		Pre-ex views of kiln [038] and flue [015]	Var
68		View of flue [015]	SE
69-70		Pre-ex view of kiln [038]	SE
71		Mix-ex / Pre shot of stone [044] + [045]	NE
72-75		Mix-ex / Pre shot of stone [044] + [045]	Var
76		View of degraded burnt clay within (016)	N
77		E facing section of Slot 2 through [020], [022] + [026]	E
78		W facing section of Slot 2 through [022] + [026]	W
79		Working shot showing ditches [022] + [026]	E
80		S facing section of flue [015] – Slot 1	S
81		W facing section of flue [015] entering kiln [038]	N
82		View of slot 1 in flue [015]	N
83		General view of flue [015] + kiln [038]	N
84		NW facing section of flue [015] – Slot 2	NW
85		General view of Slot 2 – terminal of [015]	N
86		Oblique view of terminal of ditch [] – Slot 1	E
87		E facing section of ditch [] – Slot 1	E
88		E facing section of ditch [] – Slot 2	E
89		W facing section of ditch []	W
90		E facing section of ditch [032] – Slot 2	E
91		W facing section of ditch [032] – Slot 3	W
92		W facing sections of ditch [032] – Slot 4 + ditch [030]	W
93		E facing section of ditch [032] – Slot 4	E
94		W facing section of ditch [032] – Slot 1	W
95		E facing section of ditch [030]	E
96		SE facing section of flue [015] – Slot 3	SE
97		NNW facing section of flue [015] – Slot 3	NNW
98		S facing section of ditch [041] – Slot 2	S
99-100		Slot 1 through ditch [057]	S
101		S facing section of Slot 1 through [057]	S
102		N facing section Slot 1 through [057]	N
103		W facing section slot in [044] / (045)	W
104		E facing section of slot through [044]	E
105		Possible post setting	N
106		Possible post setting	SE
107-109		Post-ex slot in [044]	Var
110-111		Clay [039] removed from NE quadrant of kiln [038]	NE
112		S facing section of ditch [041] truncated by evaluation	S
113		N facing section of ditch [059] truncated by evaluation	N
114		E facing section of kiln [015] – NE quadrant	E
115		N facing section of kiln [015] – NE quadrant	N
116		General view of kiln with clay lining	SE
117		E facing sections of [047] + [050]	E
118		W facing sections of [047] + [050]	W
119		E facing section of [052]	E
120		W facing section of [052]	W
121		W facing section [020], [022] + [026]	W
122		E facing section of [020] + [022]	E
123-131		General shots of main ditch features at N end of T1 near kiln	Var

		[038]	
132		NE facing section of slot 1 [061]	NE
133		SE facing section of slot 1 [06]	SE
134		General shot of ditch [061] + Slot 1	SE
135		S facing section of [065]	S
136-138		General shots of ditch [020] running N-S	Var
139-148		General shots of ditches [028], [032], [030] + [041]	Var
149		NW facing section relationship slot in [061] + [063]	NW
150		W facing section relationship slot in [061] + [063]	W
151-152		Oblique shot of terminals of [067] + [069]	W
153		E facing section of [067] + [069]	E
154		E facing section of [067] + [069]	E
155		N facing section of [067]	N
156		S facing section of [069]	S
157		N facing section of [059]	N
158		N facing section of kiln [038]	N
159		E facing section of Kiln [038]	E
160		View of NE quadrant of kiln [038] and clay lining (039)	SW
161		Post-ex view of [055]	S
162		Post-ex view of [055]	E
163		Slot 1 through ditch [063]	E
164		N facing section of slot 1 through [063]	N
165		S facing section of slot 1 through [063]	S
166		Terminal of ditch E facing section	E
167		Oblique of terminal of ditch	S
168		S terminus of ditch [063]	E
169-170		S facing section of terminus of [063]	S
171		Slot 2 through ditch [063]	E
172-173		S facing section of slot 2 [063]	S
174		General excavation shot of kiln SW quadrant showing (040)	W
175		N terminus of ditch [063]	W
176		N facing section of N terminus of [063]	N
177		N terminus of ditch [063]	W
178-185		Eastern enclosure ditch [063]	Var
186		Kiln [038] SW quadrant showing (072)	SW
187		SW facing section of [073] Slot 1	SW
188		Post-ex [073] Slot 1	SW
189		NW facing section of [073] Slot 1	NW
190		SE facing section of [073] Slot 2	SE
191		Post-ex [073] Slot 2	NE
192		WSW facing section [073] Slot 3	WSW
193		S facing section [075] Slot 1	S
194		Post-ex relationship slot 1 [075] and Slot 3 [073]	NE
195		Plan view of [079] + [081] showing cuts	S
196		Plan view of Slot 2 through [075]	N
197		W facing section Slot 2 [075]	W
198		E facing section Slot 2 [075]	E
199		General shot of slot 5 through ditches [020] + [022]	W
200		S facing section kiln removal [077]	S
201		S + W facing section kiln [038] SW quadrant	SW

202		W facing section of kiln [038] SW quadrant	W
203		S facing section of kiln [038] SW quadrant	S
204		Kiln clay lining (071) SW quadrant	SE
205		SW quadrant of kiln [038] with removal cut [077]	S
206		N-facing section of [075] – Slot 2	N
207		View along ditch [075]	SE
208		W facing section of pit [095]	W
209		Terminal slot in ditch [097]	W
210		View f pit [095] and ditch [097]	W
211		View along ditch [097]	S
212		NW facing section of [030] + [041] Slot 2	NW
213		W facing section of [030] + [041] Slot 3	E
214		W facing section Terminus of ditches [030] +[041]	E
215		N facing section of ditches [020] + [022]	N
216		W +NW sections of relationship slot [020] + [099]	WNW
217-218		W facing section [093] posthole	W
219		NW facing section of [085] / [088] Slot 4	NW
220		SW facing shot of [085] / [088]	NE
221		E facing section of [088] Slot 4	E
222		SW facing section of NW terminus of [090] Slot 3	NE
223		Post-ex shot of [085] – [090] E side Slots 1-4	NW
224		SE facing section of [085] [088] Slot 3	SE
225		NW facing section of [085], [088], [090] Slot 3	NW
226		SE facing section of [085], [088], [090] Slot 2	SE
227		Void Shot	-
228		SE facing section of [085], [088], [090]	SE
229		SE facing section of [085], [088], [090]	SE
230		NW facing section of [085] / [088]	NW
231		NE facing section of [085] terminus Slot 1	NE
232		Plan shot of [085] terminus Slot 1	Plan
233		Working shot of [085], [088] Slots from SE terminus	SE
234		N facing section of ditch [020] Slot 8	N
235		NW facing section of [088]	NW
236		E facing section of cut [103]	E
237		NW facing section of pits [109] + [111]	NW
238		General view of pits [109] + [111]	NE
239		N facing section of ditch [099]	N
240		General view of ditches [099] + [020]	SW
241		General view of ditches [099] + [020]	NE
242		NW facing section of ditch [088]	NW
243		SW facing section of ditch [088]	SW
244		General view of [088] curving	S
245		General view of [088] curving	NW
246-247		General view of ditch [107]	Var
248-249		Deposit (092)	Var
250		S facing section of ditch [105]	N
251		N facing section of ditch [097]	N
252		Relationship slot of ditches [020] + [119]	E
253		Relationship slot of ditches [020] + [119]	SW
254		General view of ditch [020] + [099]	SE

255		N facing section of ditch [113]	N
256		S facing section of ditch [113] and posthole [115]	S
257		General view of ditch [113]	S
258		Working hot showing deposit [123] + pit [117]	N
259-262		Large pit / posthole [121] at end of ditch [119]	Var
263		Post-ex view of pothole [115]	N
264		N facing section of posthole [115]	N
265		N facing section of [020]	S
266		S facing section of [020]	E
267		E facing section of pit [117]	N
268		N facing section of ditch [099] - Slot 2	N
269		S facing section of ditch [099] – Slot 2	
270		General view of ditches [020], [099] + [119]	SW
271		W facing section of pit / posthole [125]	W
272		N facing section of pit [127]	N
273		General view of pit [127]	W
274		Post-ex view of pit [117]	E
275		Post-ex view of pit [117]	S
276		Post-ex view of pit [117]	N
277		N facing section of ditches [020] + [133] Slot 2	N
278		S facing section of ditches [020] + [133] Slot 2	S
279		S facing section of ditches [020] + [099] Slot 3	S
280		N facing section of ditches [020] + [099] Slot 3	N
281		N facing section of ditches [020] + [133] Slot 1	N
282		S facing section of ditches [020] + [133] Slot 1	S
283		Pre-ex shot of pit [131]	S
284		Posthole [135]	W
285		N facing section of ditch [099] + [020]	N
286		S facing section of ditch [099] + [020]	S
287		N facing section of ditch [128]	N
288		S facing section of ditch [128]	S
289		W facing section through [129]	W
290-293		View of site from E edge	Var
294-298		View of site from W edge	Var
299-300		Structure [124]	NW
301		NW facing section of ditch [137]	NW
302		SE facing section of ditch [137] terminus	SE
303		SE facing section relationship slot through [099] + [139]	SE
304		W facing section relationship slot through [099] + [139]	W
305		S facing section of ditch [099] Slot 5	S
306		N facing section of ditch [099] Slot 5	N
307		N facing section of terminus [141] Slot 5	N
308		NE facing section of NW terminus Slot 1 [141]	NE
309		NW facing section of NW terminus Slot 1 [141]	NW
310		SE facing section of [141] Slot 2	SE
311		NW facing section of [141] Slot 2	NW
312		Shot of [141] from Slot 1 NW terminus	NW
313		Shot of [141] from Slot 3 SE terminus	SE
314		General shot with [141] Slot 2 in foreground	SW
315		S facing section of ditch [099] Slot 6	S

316		N facing section / end of [099] Slot 6	N
317		NE facing section of ditch [139]	NE
318		SW facing section of ditch [139]	SE
319		NW facing section of round pit [143]	NE
320		SE facing section of small pit [144]	SE
321		NW facing section of NE terminus [147]	NW
322		NE facing section of NE terminus [147]	NE
323		Plan shot of posthole [164]	Plan
324		NW facing section of pit [149]	NW
325		S facing section of pit [151]	S
326		E facing section of pit [153]	E
327		Plan shot of [131] with packing stones	Plan
328		NW facing section of pit [155]	NW
329		NW facing section of [194]	NW
330		Plan shot of [194]	Plan
331		General view of linear [157]	WNW
332		W facing section of [157] Slot	W
333		E facing section of [170] with packing stones	E
334		W facing section of [164] with packing stones	W
335		WSW facing section of [131] with packing stones	WSW
336		Plan shot of [170] with packing stones	Plan
337		N facing section of posthole [159]	N
338		Plan view of posthole [159]	N
339		NW facing section of posthole [161]	NW
340		Plan view of posthole [161]	NW
341-342		Plan view of posthole [159] + [161]	NW+N
343		E facing section of [174]	E
344		Plan shot of [174]	Plan
345		SE facing section of [177]	SE
346		Plan shot of [177]	Plan
347		E facing section of [179] with packing stones	E
348		Plan shot of [179] with packing stones	Plan
349		Plan shot of [184] with packing stones	Plan
350		S facing section of [184] with packing stones	S
351		S facing section of [190] with packing stones	S
352		S facing section of [190] with packing stones	S
353		Plan shot of [190] with packing stones	Plan
354-355		NW quadrant of kiln [038] before removal of clay [039]	E
356		Plan shot of [187]	Plan
357		WSW facing section of [187]	SW
358		E facing section of pit [167]	E
359-361		NW quadrant of kiln [038] after removal of clay (039)	E
362		NW + SE quadrants of kiln [038] after clay removal (039)	E
363		NW quadrant of kiln [038] after clay removal (039)	E
364		SE quadrant of kiln [038] after clay removal (039)	E
365		NW + SE quadrants of kiln [038] after (040) removal	E
366		NW quadrant of kiln [038] after removal of (040)	E
367		SE quadrant of kiln [038] after removal of (040)	E
368		Kiln [038] after basal fill (072) removal	E
369		SE quadrant of kiln [038] after removal of (072)	SE

370		NW quadrant of kiln [038] after removal of (072)	NW
371		Close up of clay lining (071)	NW
372-375		General view of kiln [038] after (072) removal	Var
376-378		Extent of clay lining (071) truncation for removal [077]	Var
379		Close up of clay lining (071) NW quadrant	SE
380		SE facing section of pit [205]	SE
381		SE facing section of pit [205]	SE
382		Se facing section of pit [209]	SE
383		Plan view of pit [209]	SE
384		Slot 1 through linear [211]	N
385		Slot 1 through linear [211]	N
386		W facing section of slot 1 [211]	W
387		General shot of linear [211]	W
388		General shot of linear [211]	W
389		General shot of posthole cluster around pit [196]	N
390		General shot of posthole cluster around pit [196]	E
391		General shot of posthole cluster around pit [196]	S
392		General shot of posthole cluster around pit [196]	W
393		General shot of [196] area with eastern part of Tr1 in background	W
394		N facing section of [196] + [202]	N
395		N facing section of [202]	N
396		Plan shot of [202]	Plan
397		Post-ex of kiln [038]	E
398		Post-ex of kiln [038]	W
399		Kiln [038] base with lining (071) removed	E
400		Kiln [038] base with lining (071) removed	W
401		Post-ex of kiln [038]	NE
402		SW facing section of pit / posthole [215]	SW
403		Plan view of pit / posthole [215]	SW
404		SW facing section of pit / posthole [215]	SW
405		Plan view of posthole [199] with packing stones	W
406		Mid-ex of posthole [199]	W
407		W facing section of posthole [199] with packing stones	W
408		SW section of linear [220]	SW
409		Slot 1 through [220]	SW
410		SW section of linear [222]	SW
411		Slot 1 through [222]	SW
412		SW section of linear [224]	SW
413		Slot 1 through [224]	SW
414		General shot of waterlogged linear [226]	SW

APPENDIX 2: CONTEXT REGISTER

Context	Description
(001)	Deposit – Dark grey clay loam with occasional stone and abundant white ceramic. 0.3m to 0.4m in depth. Overlying plough soil (002) in places and subsoil (003) elsewhere. Plough soil - Modern
(002)	Deposit – Mid to dark brown clayey silt with frequent rounded stone inclusions under plough soil (001) in places. Depth varies from 0.05m along S. edge of excavation to 0.3m out

	with hollow and 0.7m within hollow. Covers stone feature [004]. Plough soil - Early
(003)	Deposit – Yellow and orange sandy/gravelly clay with frequent large stone inclusions and spread of orange gravel immediately next to the E. edge of site (010). Natural boulder clay/gravel
[004]	Cut – Sub oval pit with steep to moderate sides onto a flattish, slightly sloping base (concave). Measures 7.15m by 5.5m by 2.3m. Truncated by evaluation excavation along N. and W. edge. Filled by deposits (005) and (006). Large pit
(005)	Fill – Mid brown grey silty clay. Measures 7.15m by 5.5m by 0.19m. Re-deposited natural in places and some charcoal inclusions. Overlies deposit (006). Fill of pit [004]
(006)	Fill – Black ashy silt deposit with stone inclusions and lumps of fragmentary orange re-deposited sandy clay – possibly heat affected. Measures 0.14m in depth. Underlies [005] within pit [004]. Primary fill of pit [004]
[007]	Cut – N/S orientated ditch running from N. trench edge into ditch [020]. Moderately sloping sides to rounded base. Parallel to ditch [013] until [013] cuts into [007]. 6m along length cut by ditch [018] on W. side. Measures 9.6m by 0.7m by 0.25m. Ditch
(008)	Deposit – Dark brown gritty clayey silt overlying silt (009) within wet area. Some features cutting the deposit including large pit and some ditches. Measures 0.05m to 0.13m thick. Natural silting of wet area – occupational layer
(009)	Deposit – Light to mid grey gritty silt with abundant rounded stone inclusions within deepest areas of hollow. Underlies (008) and sits on top of white clay (011). Measures 0.2m thick. Natural silting of hollow
(010)	Deposit – Orange gravel in a sandy/clayey sand matrix. Occurs in a narrow seam from edge of large hollow to E. and approximately 40m to W. Cut by a large no. of ditches and pit features. Subsoil
(011)	Deposit – white clay at base of small hollow, overlain by deposit (009). Natural clay subsoil
(012)	Fill – Mid grey brown silty sand. Frequent stone inclusions less than/equal to 0.1m by 0.1m. Infrequent charcoal inclusions. Similar to other ditch fills across Area 1. Fill of ditch [007]
[013]	Cut – N/S orientated linear running from ditch [007] in to ditch [020]. Moderately sloping sides to rounded base. In places E. side of ditch slopes steeply. Cuts fill (012) of ditch [007]. Ditch
(014)	Fill – Mid grey brown silty sand. Frequent stone inclusions less than/equal to 0.1m by 0.1m. Infrequent charcoal inclusions. Similar to other ditch fills across Area 1. Fill of ditch [013]
[015]	Cut – Curvilinear cut with steep sides and concave base – flatter towards south end. Aligned S. to N. from edge of kiln [038] and curving to NW., terminating at NW end. Connected to kiln by cut [055]. Measures 4.89m by 0.78m by 0.26m. Filled by deposit (016). Flue of probable kiln [038]
(016)	Fill – dark greyish brown silty sand with occasional small to medium rounded stones, frequent charcoal lumps and flecks in addition to lumps of degraded fired clay and occasional lumps of heat affected soft clay. Measures 4.81m in length with width and depth 0.78m by 0.26m for Slot 1 and 0.5m by 0.13m for Slot 3. Fill of Flue [015]
(017)	Void

[018]	Cut – E/W orientated linear emerging from W. side of ditch [007]. Shallow sloping sides with irregular base. Measures 0.8m by 0.28m by 0.08m. Filled by (019). Ditch
(019)	Fill – Mid grey brown silty sand. Frequent stone inclusions less than/equal to 0.04m by 0.04m. Infrequent charcoal inclusions. Similar to other ditch fills across Area 1. Fill of ditch [018]
[020]	Cut – Indistinct linear cut in plan, terminal visible at W end, merges into [022] and [024]. Orientated E/W, curving N/S. Ditch
(021)	Fill – Mid grey brown silty sand. Frequent stone inclusions. Infrequent charcoal inclusions. Similar to other ditch fills across Area 1. Fill of ditch [020]
[022]	Cut – Linear cut with terminal starting at E of ditch [020]. Merges with [026]. Indistinct in plan. Moderate to steep sides onto rounded base. Terminates 12.5m from kiln [038], possibly merges with [020]. Measures 20m by 0.4m by 0.2m. Ditch
(023)	Fill – Mid grey brown silty sand. Frequent stone inclusions. Infrequent charcoal inclusions. Similar to other ditch fills across Area 1. Fill of ditch [022]
[024]	Cut – Indistinct linear cut, only visible in slot through [020] and [026]. Very gentle sloping sides onto flattish base. Measures 0.25m width and 0.04-0.1m in depth. Ditch
(025)	Fill – Mid grey brown silty sand. Frequent stone inclusions. Infrequent charcoal inclusions. Similar to other ditch fills across Area 1. Fill of ditch [024]
[026]	Cut – Linear cut beginning at [022], branches off near [024]. Could be a continuation of [022] or [024]. Gentle slope onto flattish base. Measures 10m by 0.4m by 0.1m. Ditch
(027)	Fill – Mid grey brown silty sand. Frequent stone inclusions. Infrequent charcoal inclusions. Similar to other ditch fills across Area 1. Fill of ditch [026]
[028]	Cut – Linear cut aligned NE/SW and curving further W. at SW end. Moderate sides onto concave base. Ditches [030], [032] and [041] intersect it at points along its length. Terminates beyond [041] within wet area. Cuts subsoil [010] through majority of length and subsoil (008) at SW. end. Measures 10.7m by 0.44m by 0.1m. Ditch
(029)	Fill - Mid grey brown silty sand. Frequent stone inclusions. Infrequent charcoal inclusions. Similar to other ditch fills across Area 1. Fill of ditch [028]
[030]	Cut – E/W orientated ditch emerging from W. side of [028] and dissipating 4m further W. into Area 1. Gradual sloping sides with rounded base. Measures 4.5m by 0.35m by 0.12m. Ditch
(031)	Fill - Mid grey brown silty sand. Frequent stone inclusions less than/equal to 0.05m by 0.05m. Infrequent charcoal inclusions. Similar to other ditch fills across Area 1. Fill of ditch [030]
[032]	Cut – E/W orientated ditch cutting ditch [028] and terminating into ditch [041] at W. end. At E. end gradual sloping sides and flat base. Further W. along length sides become steeper and break into a narrow rounded base. Measures 9m by 0.5m by 0.25m. Ditch – possible enclosure due to large packing stones (see (033))
(033)	Mid grey brown silty sand. Frequent stone inclusions less than/equal to 0.05m by 0.05m. Larger angular stones less than/equal to 0.25m by 0.25m located in Slot 4 and [032]/[028]

	relationship slot. Infrequent charcoal inclusions. Fill of ditch/enclosure [032]
(034)	Void
(035)	Void
[036]	Cut – linear cut which branches off at 2.5m from start of [022] and [024]. Merges into [044]. Gently sloping sides onto rounded base. Measures 2m by 0.5m by 0.1m. Ditch
(037)	Fill – Mid grey brown silty sand. Frequent stone inclusions. Infrequent charcoal inclusions. Similar to other ditch fills across Area 1. Fill of ditch [036]
[038]	Cut – circular cut with vertical sides and a flat base measuring 2.2m diameter and 0.28m deep. Lined by clay deposit (071) which is truncated to the N by flue [015] and cut [075]. Base is very compact in the central area with deposit (084) at the base in places. Filled by (072), (040) and (039). Clay lined kiln
(039)	Deposit – mid yellow brown clay deposit capping fills of kiln [038]. Contains frequent red/orange fired clay inclusions and is visible on the surface of NW quadrant of kiln [038]. It does to cover the entirety of kiln top, where (039) is absent (040) reaches top. Measures 2.2m diameter x 0.15m deep. Clay deposit over kiln [038] – possible collapsed clay dome
(040)	Fill – Charcoal and ash rich deposit containing very frequent charcoal inclusions and infrequent fired clay inclusions. Overlies basal fill (072) of kiln [038]. Primarily underlying clay deposit (039) however on occasion pockets of (040) permeate into (039) above and (072) below. Measures 0.12m in depth. Layer of possible in situ burning
[041]	Cut – curvilinear cut orientated S. to NW. Truncated by evaluation trench cut. S. end can be found S. of evaluation trench cut with majority of length found to the north dissipating into Area 1 wet area (008) to NW. Both ditches [028] and [032] end as they enter the east side of [041]. Shallow sloping sides with 0.3m wide flat base. Measures 6m by 0.55m by 0.12m. Ditch
(042)	Fill – Mid grey brown silty sand. Frequent stone inclusions less than/equal to 0.1m by 0.1m. Infrequent charcoal inclusions. Similar to other ditch fills across Area 1. Fill of ditch [041]
(043)	Deposit – Light brown clay 10% silt 90% overlying stone wall foundations [044] and stone platforms [045] and [046]. Inclusions of small sub-rounded and sub-angular stones, flecks of charcoal. Measures 0.15 – 0.3m in depth (deeper at NE side). Post medieval plough soil.
[044]	Foundations/wall – One course of several sub-rounded, sub-angular and some slab stones ranging from medium 0.2m by 0.1m to large 0.5m by 0.3m in size. Forming a sub-rectangular in shape. Abutted on WSW side by [046]. Possible post setting under top layer of stones at NW. end. Measures 1.5m by 1.2m. Stone foundations for rubble wall – possibly post medieval animal pen/out building
[045]	Stone foundations/platform – Three large stone slabs and several smaller sub-rounded stones forming a small platform/pad. One course. Measures 1.2m by 0.6m. Small post medieval platform/pad possibly relating to small structure
[046]	Stone foundations/platform – One course of sub-rounded stones with occasional sub-angular and occasional slabs. Stones mostly measuring 0.2m by 0.2m with slabs ranging from 0.3m by 0.5m to 2m by 1.2m. Stone platform/foundations abutting [044]. Possible wall remnants possibly forming post medieval outbuilding/animal pen structure
[047]	Cut – linear cut S. of [022]. Gently sloping sides onto roundish base. Merges into [044] at W.

	end. Measures 0.2m by 0.05-0.1m. Ditch
(048)	Fill – Mid brown grey clayey silt. Few small stones. Occasional charcoal inclusions. Fill of ditch [047]
[049]	Cut – Linear cut branching off from [047] at 4.6m. Merges into [026]. Gently sloping sides onto rounded base. Measures 1.7m by 0.5m by 0.1m. Ditch
[050]	Cut – Linear cut branching off from [049] in a similar line to [036]. Gently sloping sides onto rounded base. Measures 3m by 0.4m by 0.1m. Ditch
(051)	Fill – Mid brown grey clayey silt. Few small stones. Occasional charcoal inclusions. Fill of ditch [051]
[052]	Cut – Linear cut between [050] and larger ditch. Gently sloping sides onto rounded base. Measures 3m by 0.5m by 0.12m. Ditch
(053)	Fill – Mid brown grey clayey silt. Few small stones. Occasional charcoal inclusions. Fill of ditch [052]
(054)	Fill – Mid brown grey clayey silt. Few small stones. Occasional charcoal inclusions. Fill of ditch [049]
[055]	Cut – linear cut with vertical sides and a flat base sloping from N to S – from the kiln [038] into flue [015]. Joins flue [015] to kiln. Measures 0.4m x 0.35m x 0.28m. Connection between flue [015] and kiln [038].
(056)	Fill – Mid greyish brown sandy silt with occasional stone and charcoal inclusions. Measuring 0.35m wide and 0.28m deep within cut [055]. Similar to (072) within kiln. Fill of flue connection [055]
[057]	Cut – Linear in plan running N/S. Gently top break of slope with gently sloping sides meeting at an uneven base. Measures 4m by 0.4-0.8m by 0.08m. Ditch
(058)	Fill – Moderately compact mid brown sandy silt with frequent stone inclusions. Measures 0.08m in depth. Fill of ditch [057]
[059]	Cut – N/S orientated linear with N. end cut by evaluation trench. Where cut by evaluation trench also cut by S. terminal end of [041]. Shallow sloping sides with irregular base. Measures 1.72m by 0.23m by 0.05m. Ditch
(060)	Fill – Mid grey brown silty sand. Frequent stone inclusions less than/equal to 0.03m by 0.03m. Infrequent charcoal inclusions. Similar to other ditch fills across Area 1. Fill of ditch [059]
[061]	Cut – Linear cut in plan running NW/SE into ditch [063]. Gently top break of slope with gently sloping sides and a flat base. Measures 1.83m by 0.61m by 0.1m. Ditch
(062)	Fill – Moderately compact mid brown sandy silt with frequent stone inclusions. Measures 0.1m in depth. Fill of ditch [061]
[063]	Cut – Curvilinear cut running N/S to the E. of platform [044] and [046]. Gently top break of slope with gently sloping side and an uneven flat base. Cut by [061] at N. end. Measures 15.4m by 0.5m by 0.08m. Ditch
(064)	Fill – Moderately compact mid brown sandy silt with frequent stone inclusions. Measures 0.08m in depth. Fill of [063]

[065]	<p>Cut – Posthole with steeply sloping sides onto concave base. Packing stones around stop of cut. Measures 0.45m by 0.35m by 0.2m.</p> <p>Posthole under/within [044] post medieval stone foundations. Possibly relating to [044]/[045]/[046] roofing of small post medieval structure.</p>
(066)	<p>Fill – Mid greyish brown sandy silt almost indistinguishable from post medieval plough soil (043). Occasional charcoal fleck inclusions. Packing stones around top of fill.</p> <p>Fill of posthole [065]</p>
[067]	<p>Cut – NE/SW curvilinear beginning 2m south of [038] and curving to the S. Gently sloping sides onto rounded base. Runs into terminus of [022]. Parallel to [069] and possibly stops along same line. Measures 11m by 0.58m by 0.07m.</p> <p>Ditch</p>
(068)	<p>Fill – Mid grey brown silty sand. Infrequent stone inclusions. Infrequent charcoal inclusions.</p> <p>Fill of ditch [067]</p>
[069]	<p>Cut – NE/SW curvilinear along same orientation of ditch [067] and likely same length. Measures 0.5m in width and 0.1m in depth. Same as ditch [101].</p> <p>Ditch</p>
(070)	<p>Fill – Mid grey brown silty sand. Infrequent stone inclusions. Infrequent charcoal inclusions.</p> <p>Fill of ditch [069]</p>
(071)	<p>Clay Lining – Mid yellow brown clay lining edges of kiln [038]. Similar to composition to clay capping (39). Encloses fills (040), (072) and (039) within the kiln [038]. Measures 0.08m in width and 0.28m in depth. Truncated to SW by [077] and opens at the N where flue [055] enters kiln.</p> <p>Clay lining of kiln [038]</p>
(072)	<p>Fill – Mid grey brown sandy silt basal fill of kiln [038]. Thicket deposit within kiln measuring 0.2m in depth. Infrequent stone inclusions measuring less than/equal to 0.15m. Infrequent charcoal inclusions.</p> <p>Basal fill of kiln [038]</p>
[073]	<p>Cut – NNW/SSE aligned linear feature. Gently sloping sides onto slightly concave base with shallow terminal ends (0.05m – 0.02m). Feeds into or is slightly truncated by [075]. Measures 2.7m by 0.7m by 0.2m.</p> <p>Ditch</p>
(074)	<p>Fill – Light grey brown silty sand with patches of mottled orange/cream clay. Small stone inclusions and infrequent charcoal concentrations. Occasional burnt bone.</p> <p>Fill of ditch [073]</p>
[075]	<p>Cut – curvilinear at S. edge of wet area, truncated by evaluation trench and by machining further S. down slope. Cuts deposit (009) W. and gravel [010] to the S. Terminates at SW. end aligned SW/NE, curving E. then curving to SE. and S. Measures 12.1m by 0.6m by 0.14m.</p> <p>Ring ditch</p>
(076)	<p>Fill – Mid grey brown sandy silt with occasional small to medium stone inclusions.</p> <p>Fill of ditch [075]</p>
[077]	<p>Cut – Shallow sloping cut with rounded base for removal of kiln material during use. Truncates clay lining (071) at SW. of kiln [038]. Measures 0.56m by 0.98m by 0.08m.</p> <p>Cut from kiln material removal</p>
(078)	<p>Fill – Mid grey brown sandy silt (possibly the same as kiln basal fill (072)) mixed with pockets of charcoal and ash rich deposits – likely the same as charcoal rich fill (040) of kiln [038]. Overlying black charcoal rich band (083). Measures 0.04m in depth.</p> <p>Fill of removal cut [077]. Possibly the same as kiln basal fill (072) re-deposited when material from kiln was being removed during use.</p>
[079]	Void
(080)	Void
[081]	Void

(082)	Void
(083)	Fill – charcoal and ash rich deposit underlying (078) in cut [077]. Frequent charcoal inclusions. Similar in composition to kiln fill (040). Measures 0.02m in depth. Basal fill of removal cut [077].
(084)	Deposit – very compact charcoal rich / stained sandy silt at the base of kiln [038] within the SW and SE quadrant. Measures 0.03m thick. Burnt deposit in kiln [038]
[085]	Cut – Shallow linear feature aligned NW/SE changing direction to NE/SW after 14m. Gradually sloping sides onto a U-shaped base. Parallel with [088] and [090]. Measures 16m by 0.3m by 0.17m. Ditch
(086)	Void
(087)	Fill – Mid grey brown sandy silt. Occasional small stones and charcoal. Measures 0.2m in depth. Similar to other ditch fills across Area 1. Fill of ditch [085]
[088]	Cut – shallow rectilinear feature (u-shaped in plan). NE. end aligned NW/SE for 16m, followed by NE/SW for 7m before curving NW/SE heading E. Gradually sloping/steep sides with a u-shaped base. Curving ditch
(089)	Fill – Mid grey brown sandy silt. Occasional small stones and charcoal. Similar to other ditch fills across Area 1. Fill of ditch [088]
[090]	Cut – Shallow linear feature aligned NW-SE parallel with [088]. E. side has gently sloping slides and flat base. W. end may be related to ditches [075] and [105] in enclosure [124]. May cut [213]. Ditch – possibly related to enclosure [085]/[088]
(091)	Fill – Mid grey brown sandy silt. Occasional small stones and charcoal. Similar to other ditch fills across Area 1. Fill of ditch [088]
(092)	Deposit – Mid brown/black sandy loam covering areas of gravel subsoil (010) within stone holes and plough truncations. Up to 0.1m in depth in some plough scars. Plough soil and [002] mix
[093]	Cut – Squared pit cut in plan with steep sloping sides onto flat base with slope to south. Measures 0.26m by 0.24m by 0.2m. Post hole cut
094	Fill – moderately compact dark brown sand with infrequent small stone inclusions. Measures 0.26m x 0.24m x 0.2m. Primary fill of post hole [093]
095	Cut – Circular cut with steep to moderately steep sides meeting at a concave base. Measures 0.35m x 0.34m x 0.4m. Filled by (096) Posthole or pit cut
096	Deposit – dark grey brown sandy silt with occasional charcoal flecks. Measures 0.34m diameter x 0.1m. Deposit
097	Cut – Linear cut aligned N-S and measures 6m x 0.44m x 0.08m. Linear
098	Fill – mid brown sandy silt with frequent rounded stones. Fill of [097]
099	Cut – Linear cut curving N-S with gradually sloping sides which become steep and meet at a flat base. Measures 34.5m x 1m x 0.3m. Possible outer enclosure / palisade ditch

100	Fill – Mid grey brown sandy silt with infrequent charcoal and frequent stones inclusions. Fill of [099]
101	Cut – Linear on N-W alignment and curves lightly to the SE. Measures 10.9m x 0.55m x 0.15m. Linear ditch
102	Deposit – Light grey sandy silt with occasional small stones inclusions. Fill of [101]
103	Cut – Oval cut with gradually sloping sides and an uneven base. Measures 1.14m x 0.7m x 0.1m. Pit cut through (010)
104	Fill – moderately compact dark brown silty sand with gravel inclusions. Primary fill of [103]
105	Cut – Linear cut measuring 4.2m x 0.72m x 0.11m. Ditch
106	Deposit – mid grey brown sandy silt with occasional small to medium stone inclusions. Fill of [105]
107	Cut – Curved linear cut, similarly aligned to [088] with gently sloping sides and a concave rounded base. Measures 5.5m x 0.6m x 0.05m. Linear
108	Deposit – Moderately compact light brown silty sand with occasional charcoal inclusions. Fill of [107]
109	Cut – Circular cut with steep sides which meet at a flattish base. Measure 0.41m x 0.35m x 0.17m. Pit or posthole cut
110	Deposit – mid brown sandy silt with occasional large stone inclusions. Fill of [109]
111	Cut – circular cut with steep sides and a concave base. Measures 0.3m diameter x 0.24m deep. Posthole
112	Deposit – dark grey brown sandy silt with occasional large stones and charcoal flecks. Fill of [111]
113	Cut – Linear cut on SW-NE alignment with moderately sloping sides and an uneven base. Measures 3.1m x 0.6-0.7m x 0.12m. Partition linear within [124]
114	Deposit – moderately compact light brown silty sand with frequent large stones. Fill of [113]
115	Cut – circular cut with steep W side and a gentle E side which meet at an uneven base. Measures 0.08m deep. Posthole
116	Deposit – moderately compact light – moderate brown silty sand with infrequent small stone inclusions. Fill of [115]
117	Cut – sub rectangular cut with gradually – steep sloping sides meeting at a concave base. Measures 1.35m x 0.9m x 0.33m. Pit
118	Fill – moderately compact grey brown – dark brown silty sand with gravel inclusions. Fill of [117]
119	Cut – Linear cut on NW-SE alignment with gradually sloping sides meeting a rounded base. Measures 1.6m x 0.33m x 0.07m. Ditch
120	Fill - mid grey brown silty sand with infrequent charcoal and frequent small stone inclusions.

	Fill of [119]
121	Cut – Circular cut with gradually sloping sides meeting a rounded base. Measures 0.7m x 0.54m x 0.23m. Large stone embedded in E side of cut. Post hole at end of [119]
122	Fill – mid grey brown sandy silt with infrequent charcoal inclusions. Fill of [121]
123	Fill – loosely compact black silt with frequent charcoal inclusions. Fill of [117]
124	Structure – composed of ditches [075], [105] and [213]. Enclosed space measures 8.35m x 9.5m and contains ditches [113] and [073] which may be partition ditches. Contains pits or postholes [106], [109], [111] and [128]. Possible enclosure
125	Cut – circular cut with gently sloping sides meeting at a flat base. Measures 0.42m x 0.3m x 0.06m. Posthole
126	Fill – medium – loosely compact mid grey brown sandy silt with occasional flacks of charcoal. Fill of [125]
127	Cut – Oval cut with a uneven base and slopes deeper to the NW. Measures 1.6m x 0.8m x 0.25m. Pit
128	Fill – moderately compact mixed dark brown – light brown silty sand with frequent large stones and infrequent charcoal inclusions. Fill of [127]
129	Cut – Linear cut aligned NE – SW with steep sloping sides and an uneven base. Measures 5m x 0.31m x 0.16m. Ditch
130	Deposit – moderately compact light brown silty sand with frequent stone inclusions. Fill of [129]
131	Cut – circular cut with slightly steep sides with a sharp break of slope on the S edge and a concave base. Measures 0.42m diameter x 0.28m. Posthole possibly part of structure surrounding pit [196]
132	Deposit – moderately compact mid – dark brown clay silt lying roughly 5m to the W of [085] / [088]. Measures 4.5m x 3m x 0.1m. Deposit overlying series of postholes
133	Cut – linear cut aligned NE-SW with very shallow sides meeting an irregular stony base. Measures 30.5m x 0.9m x 0.1m. Ditch
134	Deposit – mid grey brown silty sand with infrequent charcoal and frequent stone inclusions. Fill of [133]
135	Cut – circular cut with steep sloping sides and a roughly flat base. Measures 0.42m x 0.24m x 0.17m. Posthole
136	Deposit – moderately compact light brown silty sand with very frequent stone inclusions. Fill of [135]
137	Cut – Curvilinear cut NW – SE alignment with gently sloping sides meeting an uneven base. Measures 2.7m x 0.4 – 0.65m x 0.06m. Ditch
138	Deposit – moderately compact light brown sandy silt with frequent small stone inclusions. Fill of [137]
139	Cut – Linear cut aligned NE – SW with very shallow irregular sloping sides meeting at an irregular base. Measures 6m x 0.45m x 0.1m.

	Ditch
140	Fill – mid grey brown silty and with infrequent charcoal and frequent stone inclusions. Fill of [139]
141	Cut – Linear cut on NW-E alignment with gently sloping sides and a concave base. Measures 7.5m x 0.4m x 0.09m. Ditch
142	Deposit – moderately compact mid grey-brown silty slay with occasional charcoal and small – medium stone inclusions. Fill of [141]
143	Cut – circular cut with gently sloping sides meeting at a relatively flat base. Measures 0.9m diameter x 0.05m. Pit
144	Cut – circular cut with steep sloping sides meeting at a pointed base. Measures 0.17m diameter x 0.4m deep. Pit
145	Deposit – moderately compact light brown silt. Fill of [144]
146	Deposit – Moderately compact light brown silt. Fill of [143]
147	Cut – linear cut aligned E-W with gently sloping sides meeting at a concave base. Measures 4.8m x 0.35m x 0.15m. Ditch
148	Fill – loose to moderately compact mid grey brown clay silt with occasional charcoal and stones. Fill of [147]
149	Cut – circular cut with steep sides and an irregular base. Measures 0.33m x 0.3m x 0.13m. Pit
150	Fill – mid grey brown sandy silt with infrequent charcoal and small stones. Fill of [149]
151	Cut – circular cut with shallow sloping sides meeting at an irregular base. Measures 0.35m x 0.3m x 0.08m. Pit
152	Fill – mid grey brown sandy silt with rare charcoal and infrequent stone inclusions. Fill of [151]
153	Cut – circular cut with gradually sloping sides meeting at a rounded base. Measures 0.4m x 0.3m x 0.1m. Pit
154	Fill – mid grey brown sandy silt with infrequent charcoal and stone inclusions. Fill of [153]
155	Cut – sub oval pit with steep sides meeting at a flat base. Measures 0.59 x 0.45m x 0.17m. Pit
156	Fill – mid brown grey sandy silt with frequent charcoal inclusions. Fill of [155]
157	Cut – linear cut on NW – SE alignment with very shallow sloping sides meeting at an irregular base. Measures 1.8m x 0.26m x 0.03m. Ditch
158	Fill – mid grey brown sandy silt with infrequent charcoal and frequent small stone inclusions. Fill of [157]
159	Cut – circular cut with steep sloping sides meet at a concave base. Measures 0.35m x 0.29 x 0.09m. Posthole

160	Fill – firmly compact mid brown black sandy silt with infrequent charcoal inclusions. Fill of [159]
161	Cut – circular cut with gently sloping sides and a concave base. Measures 0.25m x 0.35m x 0.09m. Possible packing stones lie in the N side of the cut. Posthole
162	Fill – loose – moderately compact mixed black mid brown sandy silt with frequent charcoal inclusions. Fill of [161]
163	Fill – moderately compact mid grey brown clay silt with infrequent charcoal flecks and small stones. Fill of posthole [131]
164	Cut – circular cut with very steep sides and a concave base. Measures 0.3m diameter x 0.36m. Cut of posthole
165	Fill – medium compaction mid grey brown clay silt with occasional charcoal flecks and small stone inclusions. Fill of posthole [164]
166	Fill – medium – large sized rounded and sub-rounded stones within [164]. Focused around centre of the cut. Packing stones in [164]
167	Cut – Sub-oval cut with steep to gradual sloping sides meeting at an irregular base. Measures 0.29m x 0.2m x 0.08m. Pit
168	Fill – mid grey brown sandy silt with rare charcoal and infrequent small stone inclusions. Fill of [167]
169	Fill – moderately compact mid reddish brown sandy clay silt. Lower fill of [164] – possible post pipe
170	Cut – Circular cut with gradually sloping sides on the S edge until the break of slope and then steep sides and steep sides on the N edge meeting at a concave base. Measures 0.45m diameter x 0.4m. Posthole
171	Fill – medium compaction mid grey brown clay silt with occasional charcoal flecks and small stone inclusions. Upper fill of [170]
172	Fill – moderately compact mid grey red brown clay silt. Lower fill of [170]
173	Fill – small – medium sized sub round stones concentrated in centre of cut [170]. Packing stones in [170]
174	Cut – Circular cut with sloping gradually sloping sides and a concave base. Measures 0.26m diameter x 0.24m. Posthole
175	Fill - medium compaction mid grey brown clay silt with occasional charcoal flecks and small stone inclusions. Upper fill of [174]
176	Fill – moderately compact mid yellow – brown clay silt. Lower fill of [174]
177	Cut – ovoid cut with gradually sloping sides and a concave base. Measures 0.4m diameter x 0.32m. Posthole
178	Fill - medium compaction mid grey brown clay silt with occasional charcoal flecks and small stone inclusions.

	Fill of [177]
179	Cut – ovoid cut with gradually sloping sides becoming steep after break of slope on the S side. N side has steeply sloping sides and they meet at a concave base. Measures 0.65m x 0.28m. Posthole
180	Fill – small – medium sized rounded / sub rounded stones within [131]. Focused within the break of slope around centre of the cut. Packing stones within posthole [131]
181	Fill - medium compaction mid grey brown clay silt with occasional charcoal flecks and small stone inclusions. Upper fill of [179]
182	Fill – moderately compact mid yellow brown clay silt. Lower fill of [179]
183	Fill – small – medium sized sub rounded stones on the edge of cut [179]. Packing stones in [179]
184	Cut – ovoid cut with steep sides and a concave base. Measures 0.32m x 0.22m. Posthole
185	Fill - medium compaction mid grey brown clay silt with occasional charcoal flecks and small stone inclusions. Fill of [184]
186	Fill – small – medium sized sub rounded stones within the E of [184]. Packing stones in [184]
187	Cut – circular cut with steep sides and a concave base. Posthole
188	Fill - medium compaction mid grey brown clay silt with occasional charcoal flecks and small stone inclusions. Fill of [187]
189	Fill –small – medium sized sub rounded sub angular stones around the centre and S edge of cut. Packing stones in [187]
190	Cut – Circular cut with gradually sloping sides which becomes steep and meet at a concave base. Posthole
191	Fill – medium compaction mid grey brown clay silt with occasional charcoal flecks and small stone inclusions. Fill of [190]
192	Fill – moderately compact mid red brown clay silt. Fill of [190]
193	Fill – small sub rounded sub angular stones. Packing stones within [190]
194	Cut – ovoid cut with gently sloping side which becomes steep on the N edge and steep S side meeting at a concave base. Measures 0.6m x 0.25m x 0.15m. Posthole
195	Fill – medium compaction mid grey brown clay silt with occasional charcoal flecks and small stone inclusions. Fill of [194]
196	Cut – circular cut with steep sloping sides meeting a flat base. Measures 0.72m x 0.68m x 0.17m. Pit
197	Fill – moderately compact mid grey brown sandy silt with infrequent charcoal inclusions. Fill of [196]

198	Fill – packing stones lying in the upper part of (197) and measures between 0.29m x 0.24m x 0.15m – 0.17m x 0.15m x 0.08m. Packing stones within [196]
199	Cut – circular cut with steep sloping sides meeting at a concave base. Measures 0.32m x 0.2m x 0.17m. Packing stones lie within the N side of the cut. Posthole
200	Fill – moderately compact mid grey brown sandy silt with infrequent charcoal inclusions. Fill of [199]
201	Fill – packing stones lying within the N side of cut [199]. Measure 0.15m x 0.12m x 0.1m. Packing stones within [199]
202	Cut – sub-oval cut with moderate to gradually sloping sides meeting at an uneven base. Measures 0.52m x 0.38m x 0.14m. Posthole
203	Fill – moderately compact mid grey brown sandy silty with infrequent charcoal inclusions. Fill of [202]
204	Fill – packing stones within the W end of [202]. Measures between 0.1m x 0.1m x 0.1m – 0.18m x 0.18m x 0.14m. Packing stones within [202]
205	Cut – circular cut with steep sloping NE side and a gently sloping SW side which meet at a concave base. Measures 0.92m x 0.9m x 0.27m. Pit
206	Fill – moderately compact mid brown black sandy silt with frequent small stone inclusions. Fill of [205]
207	Cut – circular cut with steeply sloping sides and a slightly concave base. Measures 0.18m x 0.18m x 0.08m. Stakehole
208	Fill – loose – moderately compact mid brown black sandy silty with infrequent charcoal inclusions. Fill of [207]
209	Cut – sub oval cut with gently sloping sides meeting at an undulating base. Measures 0.97m x 0.44m x 0.1m. Shallow pit
210	Fill – moderately compact id brown sandy silt with frequent small – medium stone inclusions. Fill of [209]
211	VOID
212	VOID
213	Cut - linear cut measuring 5.1m x 0.45m x 0.08m. Ditch of enclosure [124]
214	Fill - Mid grey brown sandy silt. Occasional small stones and charcoal. Fill of [213]
215	Cut – circular cut with steep sloping sides meeting at an uneven base. Measures 0.47m x 0.39m x 0.19m. Pit / posthole
216	Fill – moderately compact mid brown black sandy silt with infrequent charcoal inclusions. Fill of [215]
217	Cut – circular cut with gradually sloping sides measuring 3.5m x 3m x 0.5m. Concentration of stones at W end of cut. Pit possibly associated with kiln processing activity
218	Fill – mid brown grey sandy silt with infrequent charcoal inclusions. Measures 0.3m deep. Upper fill of [217]

219	Fill – charcoal and fired clay rich. Measures 0.2m deep. Lower fill of [217]
220	Cut – linear cut on NE-SW alignment with steep sloping sides meeting a flat base. Measures 2.6m x 0.4m x 0.12m. Ditch
221	Fill – moderately compact mid brown sandy silt with frequent small stone inclusions. Fill of [220]
222	Cut – linear cut on NE-SW alignment with steeply sloping side NW side and a gently sloping SE side meeting at a slanted flat base. Ditch
223	Fill – moderately compact mid brown sandy silt with frequent small stone inclusions. Fill of [222]
224	Cut – linear cut on NE-SW alignment with steep sloping sides meeting at a concave base. Measures 4.6m x 0.36m x 0.1m. Linear
225	Fill – moderately compact mid brown sandy silty with frequent small stone inclusions. Fill of [224]
226	Cut – linear cut on N-S alignment with steeply sloping sides meeting at a concave base. Measures 14m x 0.38 x 0.12m. Linear
227	Fill – moderately compact mid brown sandy silt with infrequent small stone inclusions. Fill of [226]

APPENDIX 3: DRAWING REGISTER

No.	Context	Description	Scale
1		SE facing section of pit [004]	1:10
2		SW facing section of pit [004]	1:10
3		Plan of pit [004]	1:20
4		N facing section of Slot 4 [007] + [013]	1:10
5		S facing section Slot 1 [007]	1:10
6		N facing section Slot 2 [007] + [013]	1:10
7		W facing and N facing section relationship slot [007] + [018]	1:10
8		E facing section [018]	1:10
9		S facing section and W facing section at terminus of ditch [015]	1:10
10		N facing and E facing sections relationship slot [020] + [013]	1:10
11		N facing and W facing sections relationship slot [007] + [020]	1:10
12		N facing section of ditch [028] – Slot 1	1:10
13		N facing section of ditch [028] – Slot 2	1:10
14		NE facing section of ditch [028] – Slot 3	1:10
15		Pre-ex plan of kiln [038] and flue [015]	1:20
16		N facing section of flue [015] – entering kiln [038]	1:10
17		S facing section of flue [015] – Slot 1	1:10
18		NW facing section of flue [015] – Slot 2	1:10
19		Pre-ex plan of [044], [045] and [046]	1:20
20		SE facing section of flue [015] – Slot 3	1:10
21		NNW facing section of flue [015] – Slot 3	1:10
22		E facing section of ditches [022], and [026] Slot 1	1:10
23		N facing section of ditch [020] Slot 1	1:10

24		W facing section of [022] + [026] – Slot 2	1:10
25		E facing section of [022] + [026] – Slot 2	1:10
26		W facing section of Slot 2 [020], Slot 3 [022] + [026], Slot 1 [024] + [036]	1:10
27		W facing section of [036]	1:10
28		E facing section of [036]	1:10
29		E facing section of [036]	1:10
30		W + N facing section and relationship slot ditch [028] + [030]	1:10
31		N facing section of Slot 1 [057]	1:10
32		S facing section of Slot 1 [057]	1:10
33		Overlay plan of DWG #19	
34		W facing section slot [052]	1:10
35		E facing section slot [050]	1:10
36		W facing section slot [050]	1:10
37		E facing section slot [047]	1:10
38		W facing section slot [047]	1:10
39		E facing section slot [022] + [020]	1:10
40		W facing section slot [020], [024], [052] + [050]	1:10
41		E facing section slot [052]	1:10
42		W facing section [044] – Slot	1:10
43		S facing section [065]	1:10
44		E facing section [032] – Slot 3	1:10
45		W facing section [030] – Slot 1	1:10
46		W facing section [032] – Slot 4	1:10
47		SE facing section [041] – Slot 1	1:10
48		S facing section [041] – Slot 2	1:10
49		E + S facing section [059] at terminus	1:10
50		E facing section [032] – Slot 2	1:10
51		E facing section [032] – Slot 2	1:10
52		SSW facing section Kiln removal [077]	1:10
53		W facing section of kiln [038] – SW quadrant	1:10
54		S facing section of kiln [038] – SW quadrant	1:10
55		E facing section of kiln [038] – NE quadrant	1:10
56		N facing section of kiln [038] – NE quadrant	1:10
57		NE + SE facing section of ditch [061] + (062) – Slot 1	1:10
58		N facing section of evaluation trench showing ditch [059] + [041]	1:10
59		N facing section of ditch [059] – Slot 2	1:10
60		N facing section of Slot 1 through ditch [063] + (064)	1:10
61		S facing section of Slot 2 through ditch [063] + (064)	1:10
62		NW facing section of ditches [030] + [041]	1:10
63		W + NE facing sections of ditches [061] + [063]	1:10
64		Site Plan	1:50
65		W facing section of posthole [093]	1:10
66		Plan of [093]	1:20
67		SW facing section of ditch [088] - Slot 7	1:10
68		NW facing section of ditch [088] – Slot 6	1:10
69		NW facing section of linear [085] at terminus – Slot 1	1:10
70		NW facing section of linears [088] and [085] – Slot 2	1:10
71		NW facing section of linears [085], [088] + [090] – Slot 2	1:10

72		NW facing section of linears [085] + [088] – Slot 4	1:10
73		S facing section of linear [088] – Slot 5	1:10
74		SW facing section of ditch [107]	1:10
75		N facing section of ditch [099]	1:10
76		SW facing section of ditch [099]	1:10
77		N facing section of ditch [020] – Slot 8	1:10
78		NE facing section of pit [117]	1:10
79		Mid-ex plan of pit [117]	1:20
80		S + W facing section of ditch [129] – Terminus (S)	1:10
81		NE facing section of ditch [129] – Terminus (N)	1:10
82		N facing section of ditches [099] + [139]	1:10
83		N facing section of ditches [020] + [133] – Slot 2	1:10
84		N facing section of ditches [020] + [133] – Slot 1	1:10
85		NW facing section of posthole [135]	1:10
86		NW facing section of ditch [137]	1:10
87		SE facing section of ditch [137]	1:10
88		N facing section of E terminus of [137]	1:10
89		N facing section of ditch [099] – Slot 5	1:10
90		NE facing section of ditch [141] – Slot 1	1:10
91		SE facing section of ditch [141] – Slot 2	1:10
92		SW facing section of ditch [139]	1:10
93		S facing section of ditch [099] – Slot 6	1:10
94		NE facing section of round pit [143]	1:10
95		SE facing section of small pit [144]	1:10
96		Overlay plan of DWG #15	1:20
97		S facing section of [063] – Slot 2	1:10
98		S facing section of N terminus of ditch [063]	1:10
99		W facing section of ditch [075] – Slot 2	1:10
100		E facing section of ditch [075] – Slot 2	1:10
101		N, S + E facing section of ditches [067] + [069]	1:10
102		E + S facing section of ditch [022]	1:10
103		N facing section of [020] + [022]	1:10
104		Section of [075] Slot 1 + [073] Slot 3 – Relationship slot	1:10
105		NNW facing section of ditch [073] – Slot 2	1:10
106		Plan of pit [103]	1:20
107		Plan of pit [095]	1:20
108		Plan of pit [125]	1:20
109		SW facing section of pit [125]	1:10
110		NW facing section of pit [148]	1:10
111		Plan of pit [149]	1:20
112		S facing section of pit [151]	1:10
113		E facing section of pit [153]	1:10
114		SW facing section of ditch [113]	1:10
115		NE facing section of ditch [113]	1:10
116		NW facing section of ditch [075] – Slot 2	1:10
117		SW facing section of ditch [105] – Slot 1	1:10
118		N facing section of ditch [097] – Slot 1	1:10
119		NW facing section of ditch [097]	1:10
120		W facing section of pit [095]	1:10
121		NW facing section of postholes [109] + [111]	1:10

122		N facing section of ditch [099] – Slot 2	1:10
123		S facing section of ditch [020] – Slot 9	1:10
124		E + SW facing sections of relationship slot [010] + [119]	1:10
125		S facing section of ditch [119]	1:10
126		E-W orientated profile of posthole [121]	1:10
127		Plan of posthole [121]	1:10
128		NE facing section of ditch [127]	1:10
129		Plan of postholes [109] + [111]	1:10
130		N facing section of [020] – Slot 11 + [099] – Slot 3	1:10
131		NW facing section of pit [155]	1:10
132		Plan of pit [155]	1:20
133		Post-ex plan of pits [143] + [144]	1:20
134		SE + W facing section of relationship slot [099] + [139]	1:10
135		Plan of pits [151], [153] + [167]	1:20
136		E facing section of linear [157]	1:10
137		E facing section of pit [167]	1:10
138		Post-ex profile of kiln [038]	1:20
139		Profile of kiln [038] with clay lining (071)	1:10
140		Profile of kiln [038] with clay lining (071) removed	1:10
141		Plan of posthole spread / cluster beneath (132)	1:20
142		SE facing section of [205]	1:10
143		Plan of pit [205]	1:20
144		SE facing section of [209]	1:10
145		N facing section of stakehole [207]	1:10
146		SW facing section of pit / posthole [215]	1:10
147		Plan of pit / posthole [215]	1:20
148		Plan of features [207] + [209]	1:20
149		Plan of SE corner of Tr 1	1:50
150		Plan of SW corner of Tr 1 [226]	1:50
151		SW facing section of linear [220]	1:10
152		SW facing section of linear [222]	1:10
153		SW facing section of linear [224]	1:10
154		NE facing section of linear [226] – Terminus	1:10
155		SW facing section of linear [226] – Slot 1	1:10
156		Post-ex plan of features [], [159] + [167]	1:20
157		N facing section of posthole [169]	1:10
158		NW facing section of posthole [161]	1:10
159		W facing section of pit [217]	1:10
160		SW facing section of posthole [131]	1:10
161		SW facing section of posthole [164]	1:10
162		NE facing section of posthole [170]	1:10
163		W facing section of posthole [194]	1:10
164		SW facing section of posthole [190]	1:10
165		SSW facing section of posthole [187]	1:10
166		NE facing section of posthole [174]	1:10
167		SE facing section of posthole [177]	1:10
168		SE facing section of posthole [179]	1:10
169		S facing section of posthole [184]	1:10
170		N facing section of pit [196] and posthole [202]	1:10
171		W facing section of posthole [199]	1:10

172		ESE facing section of [073] – Slot 1 Terminus	1:10
173		W facing section of ditches [047] + [044]	1:10
174		S + NW facing section – relationship slot [028] + [032]	1:10
175		E facing section of ditches [049] + [047]	1:10
176		E facing section of ditch [047]	1:10
177		NE facing section of pit [103]	1:10

APPENDIX 4: SMALL FINDS REGISTER

No.	Context	Description
1	016	Large fragments of fired clay
2	029	Burnt clay fragment
3	039	Fired clay slag
4	043	Coarse stone and quartz
5	043	Bone fragments
6	043	Modern ceramic
7	072	Possible ceramic fragment
8	074	Burnt bone fragments
9	039 SW Quad	Fired clay
10	040 SW Quad	Fired clay
11	074	Charred twig
12	076	Lead object – possible handle
13	092	Worked flint / chert
14	040 NW Quad	Fired clay from top of kiln [038]

APPENDIX 5: SAMPLE REGISTER

Context	Trench	Quantity (Litres)
002	1	3
005	2	20
006	2	20
008	1	20
009	1	20
012	1	10
012	1	10
014	1	10
014 Slot 2	1	10
016 Slot 1	1	20
016 Slot 1	1	10
016 Slot 2	1	10
016 Slot 3	1	10
019	1	10
020 Slot 4	1	10
021 Slot 1	1	10
021 Slot 2	1	10
021 Slot 5	1	10
023 Slot 3	1	10
023 Slot 2	1	10

023 Slot 5	1	10
023 Slot 6	1	10
025 Slot 1	1	10
027 Slot 2	1	10
027 Slot 3	1	10
029 Slot 1 + 2	1	10
029 Slot 3	1	10
031 Slot 1	1	10
031 Slot 2	1	10
033 Slot 1	1	10
033 Slot 2	1	10
033 Slot 3	1	10
033 Slot 4	1	10
037 Slot 2	1	10
037 Slot 1	1	10
039 NE Quad	1	10
039 SW Quad	1	10
040 SW	1	6
040 NE Quad	1	20
042 Slot 1	1	10
042 Slot 2	1	10
031 + 042	1	10
043	1	Stones
043 Under stones	1	10
048	1	10
048 Slot 2	1	10
051	1	10
053	1	10
054 Slot 2	1	10
056	1	10
058 Slot 1	1	10
060 Slot 1 + 2	1	10
062 Slot 1	1	10
064 Slot 1	1	10
064 N Terminus	1	10
064 Slot 2	1	10
064 S Terminus	1	10
066	1	10
068 Slot 1	1	10
070 Slot 1	1	10
072	1	20
072 SW	1	10

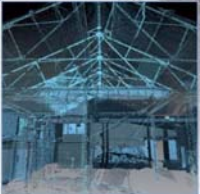
072 SW	1	10
074 Slot 1 Terminus	1	10
074 Slot 2	1	10
074 Slot 3	1	10
076 Slot 1 Terminus	1	10
076 Slot 2	1	10
078	1	10
083	1	1
084	1	3
086 Slot 1	1	10
086 Slot 2	1	10
086 Slot 3	1	10
087 Slot 2	1	10
087 Slot 3	1	10
091 Slot 1	1	10
091 Slot 2	1	10
051	1	10
094	1	10
021	1	10
076 Slot 2	1	10
102	1	10
021 Slot 8	1	10
106	1	10
098	1	10
086	1	10
108	1	5
100 Slot 1	1	8
110	1	5
112	1	7
104	1	10
086 Slot 4	1	10
086 Slot 5	1	10
089 Slot 4	1	10
089 Slot 5	1	10
114	1	10
120 + 122	1	10
116	1	10
123	1	20
118	1	10
021 Slot 9	1	10
100 Slot 2	1	10
110	1	2
126	1	10
128	1	10
021 Slot 11	1	10
100 Slot 3	1	10
134 Slot 1	1	6
100 Slot 4	1	10

136	1	5
130	1	10
142 Slot 1	1	10
142 Slot 2	1	10
142 Slot 3	1	5
100 Slot 5	1	10
100 Slot 6	1	6
140	1	6
145	1	5
148 Slot 1	1	10
148 Slot 2	1	10
158	1	10
156	1	4
154	1	1
150	1	1
152	1	2
162	1	10
160	1	10
168	1	1
163	1	10
176	1	10
192	1	10
172	1	10
182	1	10
188	1	10
169	1	10
171	1	10
191	1	10
185	1	10
181	1	10
132	1	10
175	1	10
178	1	10
195	1	10
206	1	10
208	1	10
210	1	10
212	1	10
200	1	10
203	1	10
197	1	10
198	1	10
071	1	10
041 NW Quad	1	10
041 SE Quad	1	10
072 NW Quad	1	10
072 SE	1	10

Quad		
216	1	10
219	1	10
218	1	10

APPENDIX 6: DISCOVERY AND EXCAVATION IN SCOTLAND (DES) REPORT

LOCAL AUTHORITY:	City of Edinburgh Council
PROJECT TITLE/SITE NAME:	Broomhills Road, Edinburgh
PROJECT CODE:	AOC 22560
PARISH:	Edinburgh
NAME OF CONTRIBUTOR:	Rob Engl
NAME OF ORGANISATION:	AOC Archaeology Group
TYPE(S) OF PROJECT:	Archaeological Monitored Top-soil Strip & Excavation
NMRS NO(S):	None
SITE/MONUMENT TYPE(S):	Medieval/post medieval grain drying kiln & agricultural field system
SIGNIFICANT FINDS:	Grain drying kiln, stone platform, stone hearth and post settings, curvilinear ditches, pits and post-holes
NGR (2 letters, 6 figures)	NT 13101 70615
START DATE (this season)	March 2016
END DATE (this season)	March 2016
PREVIOUS WORK (incl. DES ref.)	AOC 2014, 2015
MAIN (NARRATIVE) DESCRIPTION: (May include information from other fields)	<p><i>AOC Archaeology Group was commissioned by BDW Trading Ltd & the Catchelraw Trust to undertake an archaeological top-soil strip and excavation at a land parcel situated at Frogston Road East, Edinburgh (NGR: NT 271980 676900).</i></p> <p><i>The archaeological works sought to ascertain the extent, nature and identity of remains discovered during an archaeological evaluation conducted in March 2016. The top-soil strip cleared an area measuring approximately 100 m by 70 m along the western perimeter of the site. This revealed a suite of features including, a clay lined kiln, a truncated stone platform, a stone hearth with post built super-structure and numerous pits, postholes and curvilinear ditches. Small finds were largely absent and restricted to modern ceramics and a single small ceramic body shard of uncertain date. Based on form and existing archaeological parallels it is likely that the majority of the features are medieval/early post medieval in date and represent the truncated remains of field systems and delineated activity areas. This will hopefully be clarified by post-excavation analyses</i></p> <p><i>Further archaeological works consisting of a programme of post excavation analyses and publication are required as part of this phase of development.</i></p>
PROPOSED FUTURE WORK:	None
CAPTION(S) FOR ILLUSTRS:	N/A
SPONSOR OR FUNDING BODY:	BDW Trading Ltd & the Catchelraw Trust
ADDRESS OF MAIN CONTRIBUTOR:	AOC Archaeology Group; Edgefield Road Industrial Estate; Loanhead, Midlothian, EH20 9SY
EMAIL ADDRESS:	admin@aocarchaeology.com
ARCHIVE LOCATION	Archive to be deposited in NMRS



AOC Archaeology Group, Edgefield Industrial Estate, Edgefield Road, Loanhead EH20 9SY
tel: 0131 440 3593 | fax: 0131 440 3422 | e-mail: edinburgh@aocarchaeology.com

www.aocarchaeology.com