



## Princess Elizabeth Nursery School, 14 Clearburn Crescent, Edinburgh:

### Historic Building Recording Report

---

<b>On Behalf of:</b>	<b>Invincible Scotland Trust Flat 1, 17A West Crosscauseway Edinburgh EH8 9JW</b>
<b>National Grid Reference (NGR):</b>	<b>NT 27500 71697</b>
<b>AOC Project No:</b>	<b>23468</b>
<b>Planning Application No:</b>	<b>15/01186/FUL</b>
<b>OASIS No:</b>	<b>253602</b>
<b>Prepared by:</b>	<b>Diana Sproat</b>
<b>Date:</b>	<b>24<sup>th</sup> June 2016</b>

This document has been prepared in accordance with AOC standard operating procedures.

**Author: Diana Sproat**

**Date: 24<sup>th</sup> June 2016**

**Approved by: Graeme Cavers**

**Date: 24<sup>th</sup> June 2016**

**Draft/Final Report Stage: Draft**

**Date: 24<sup>th</sup> June 2016**

**Enquiries to:** AOC Archaeology Group  
Edgefield Industrial Estate  
Edgefield Road  
Loanhead  
EH20 9SY

Tel. 0131 440 3593

Fax. 0131 440 3422

e-mail. [admin@aocarchaeology.com](mailto:admin@aocarchaeology.com)

## Contents

	<b>Page</b>
List of Figures.....	2
List of Plates .....	2
List of Appendices.....	2
<i>Summary</i> .....	6
1 INTRODUCTION .....	7
<b>1.1 Project Background</b> .....	<b>7</b>
<b>1.2 Site Location</b> .....	<b>7</b>
2 OBJECTIVES .....	7
3 METHODOLOGY .....	7
<b>3.1 Introduction</b> .....	<b>7</b>
<b>3.2 Photographic record</b> .....	<b>7</b>
<b>3.3 Written record</b> .....	<b>7</b>
<b>3.4 Drawn record</b> .....	<b>8</b>
4 HISTORICAL BACKGROUND .....	8
5 RESULTS.....	10
<b>5.1 The Exterior</b> .....	<b>10</b>
<b>5.2 The Interior: Ground Floor</b> .....	<b>10</b>
<b>5.3 The Interior: First Floor</b> .....	<b>10</b>
6 DISCUSSION.....	11
7 CONCLUSIONS & FURTHER WORKS.....	11
8 REFERENCES .....	11
8.1 Bibliographical references .....	11
8.2 Cartographic references .....	11
APPENDIX 1: PHOTOGRAPHIC RECORD .....	12
APPENDIX 2: DISCOVERY AND EXCAVATION IN SCOTLAND (DES) REPORT .....	13

## List of Figures

Figure 1: Site Location plan  
Figure 2: Extract from Ordnance Survey map, 1920  
Figure 3: Extract from Ordnance Survey map, 1935  
Figure 4: Extract from Ordnance Survey map, 1949  
Figure 5: Princess Elizabeth Nursery School, east elevation

Figure 6: Princess Elizabeth Nursery School, west elevation  
Figure 7: Princess Elizabeth Nursery School, ground floor and first floor plan

## List of Plates

Plate 1: East elevation, general view from the east  
Plate 2: East elevation, general view of south side from the north-east  
Plate 3: East elevation, general view of the north-side from the south-east  
Plate 4: East elevation, detail of front entrance from the east  
Plate 5: East elevation, detail of fittings to main entrance, from the south  
Plate 6: North elevation, general view from the north-west  
Plate 7: North & West elevations, general view from the north-east  
Plate 8: West elevation, general view of south side from the north-east  
Plate 9: West elevation, detail of chimney from the NNE  
Plate 10: South elevation, general view from the SSW  
Plate 11: South elevation, detail of doorway from the SSW  
Plate 12: Room 0/1, detail from the main entrance from the north-east  
Plate 13: Room 0/5a, detail of original door fittings from the west  
Plate 14: Room 0/1, detail of hatch in the north wall from the south  
Plate 15: Room 0/2, detail of hatch in the south wall from the north-west

Plate 16: Room 0/3, detail of fireplace surround in the east wall from the west  
Plate 17: Room 0/4, general view from the south  
Plate 18: Room 0/5a, general view from the north-east  
Plate 19: Room 0/6, general view from the east  
Plate 20: Room 0/7, detail of the door in the south wall from the north  
Plate 21: Room 1/1, general view from the south  
Plate 22: Room 1/1, general view from the north  
Plate 23: Room 1/1, general view of west wall (south side) from the east  
Plate 24: Room 1/1, general view from the south-east  
Plate 25: Room 1/3, detail of fireplace and removed surround from the east  
Plate 26: Room 1/4, general view from the south-east  
Plate 27: Room 1/4 & 1/5, general view from the north-east  
Plate 28: Room 1/2, detail of door to Room 1/7 from the south-east  
Plate 29: Room 1/8, detail of west wall window from the east

## List of Appendices

Appendix 1: Photographic Record

Appendix 2: Discovery and Excavation in Scotland (DES) Entry

### **Summary**

*AOC Archaeology Group was commissioned by Invincible Scotland Trust to undertake an historic building record of the former Princess Elizabeth Nursery School at 14 Clearburn Crescent, Edinburgh, prior to the demolition of the building to construct new dwellings. The works were required as a condition of planning consent.*

*The Nursery was built in one phase in the late 1920s/early 1930s. The exterior has remained as it was originally constructed, with a much neater and ordered east elevation to the roadside and a more ancillary and messy rear west elevation. Internally, the building also has retained its original layout, although some of the original fixtures and fittings have been replaced over time to modernise the building, with fireplaces blocked-up and replaced, and door fittings upgraded. However, the main doors into the building at ground floor level and some original door fittings have survived.*

*No further historic building survey is considered necessary prior to development, although this will need to be confirmed by the CEC Archaeology Service on behalf of the CEC.*

## 1 INTRODUCTION

### 1.1 Project Background

1.1.1 AOC Archaeology Group was commissioned by Invincible Scotland Trust to undertake an historic building survey of the former Princess Elizabeth Nursery School in advance of demolition of the building to make way for a new development. The works have been completed as part of an archaeological planning condition (Planning Ref: 15/01186/FUL). The extent of the works was defined by the City of Edinburgh Council (CEC) as advised by the City of Edinburgh Council Archaeology Service (CECAS) and consisted of a written, drawn and photographic record of the building prior to development.

### 1.2 Site Location

1.2.1 The Princess Elizabeth Nursery School is located to the south-east of the city of Edinburgh and in a complex of suburban housing to the north of Dalkeith Road. It is centred on NGR: NT 27500 71697 (Figure 1).

## 2 OBJECTIVES

2.1 The main objective of the historic building recording survey was to create a baseline archaeological building record of the building in advance of planned demolition through photographic, written and drawn record.

## 3 METHODOLOGY

### 3.1 Introduction

3.1.1 A 'Level 2' historic building survey (as defined by Historic England, 2007) was undertaken on the building which consisted of a detailed written, photographic and drawn record preceded by an element of archive research.

### 3.2 Photographic record

3.2.1 A general and detailed exterior and interior photographic survey was undertaken of the building in black and white print and colour digital using a 35mm SLR and digital SLR respectively. A discreetly placed 1m ranging pole was placed in all shots where access and health and safety allowed for scale. General shots of each elevation were taken (both head-on and oblique) as well as the building in its setting. Detailed shots of individual features such as doors, windows, architectural detail, etc, was also undertaken. Internally, a general photographic record was taken of the buildings on a room-by-room basis. Internal detail shots were taken of some features of architectural or historic interest such as doors, mouldings, cornices, windows, etc. A running register of photographs was taken on site which can also be found in Appendix 1. A selection of digital photographs has been used as plates to illustrate this report.

### 3.3 Written record

3.3.1 A written survey was undertaken of the exterior and interior (on a room-by-room basis) using AOC *pro forma* recording sheets with comment on condition, construction, architectural features, fixtures and fittings, modern interventions, evidence for phasing and function and anything else pertinent to the historic record.



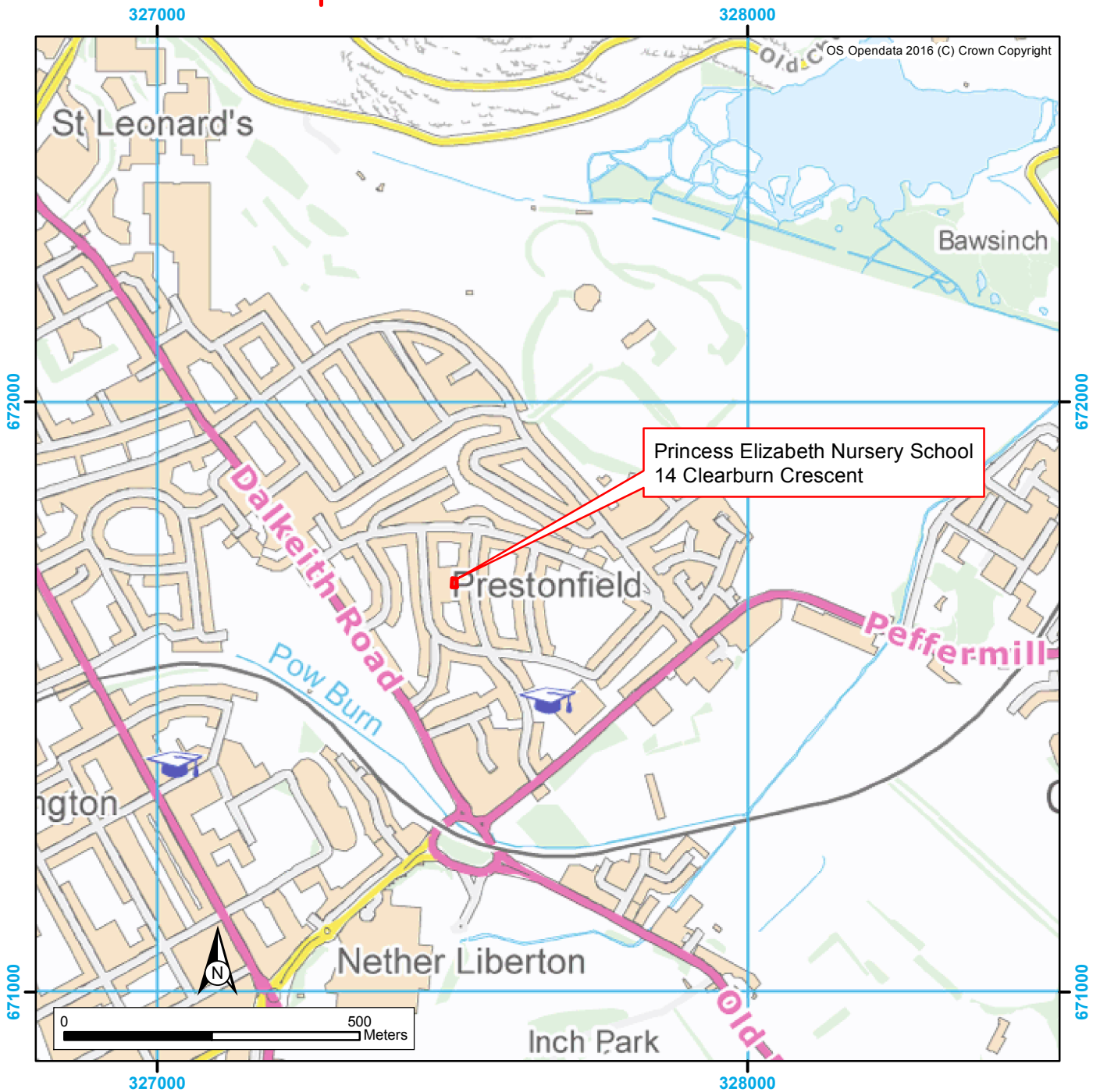
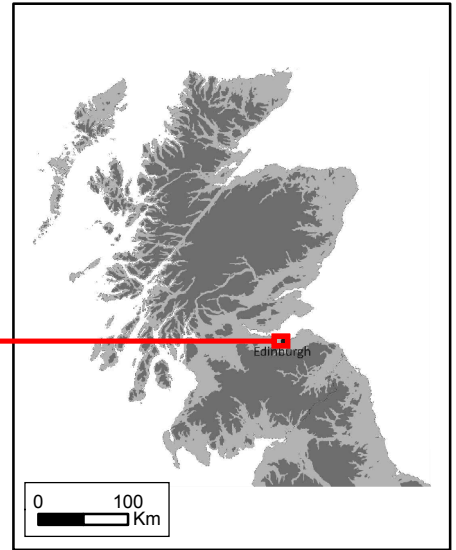
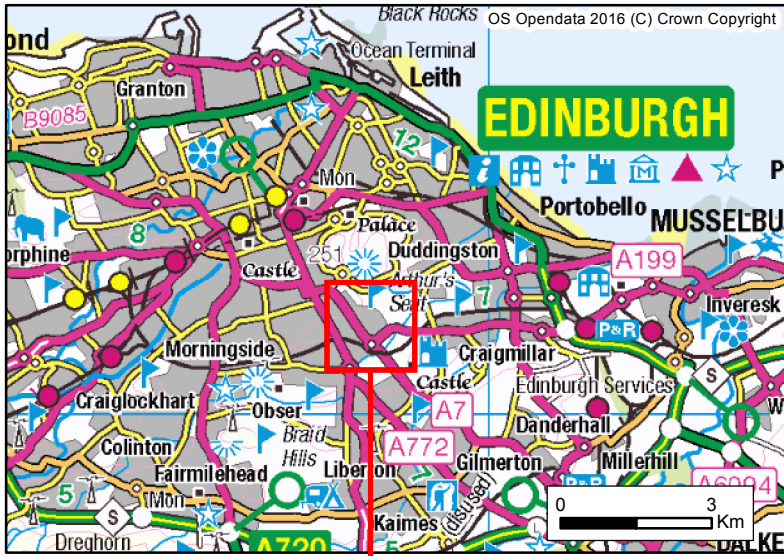


Figure 1: Site location plan

### 3.4 Drawn record

- 3.4.1 A drawn record of the building was also required. As no architects' drawings existed for the building, the main elevations were surveyed using a combination of robotic total station and photo rectification. The floor plans of the building were undertaken on site at a scale of 1:50. All drawings have been represented in this report at a 1:100 (Figures 7 & 8).

## 4 HISTORICAL BACKGROUND

- 4.1 The Princess Elizabeth Nursery School, together with its surrounding development of suburban housing, was constructed between 1920 - 1935, as can be seen when comparing the two Ordnance Survey maps of those dates (Figures 2 & 3). The area was previously open and undeveloped land to the north-east of the Dalkeith Road. It appears unchanged throughout the 20th century and the 1949 Town Plan shows the building in detail, and it is here annotated as 'Clinic'. Only the first floor was used as a nursery with the NHS Lothian Trust using the ground floor of the building. The City of Edinburgh Council put forward proposals to close the school in 2010, and it has lain empty ever since. The development will see the demolition of the building to make way for new flats.



Figure 2: Extract from Ordnance Survey map, 1920



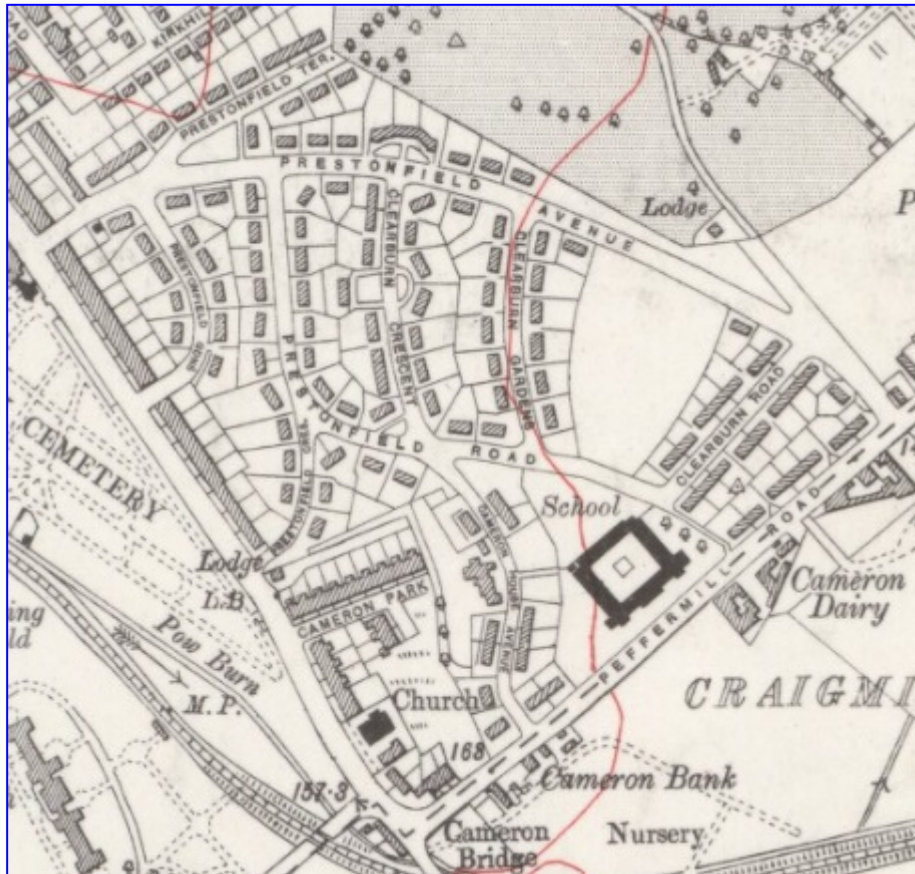


Figure 3: Extract from Ordnance Survey map, 1935

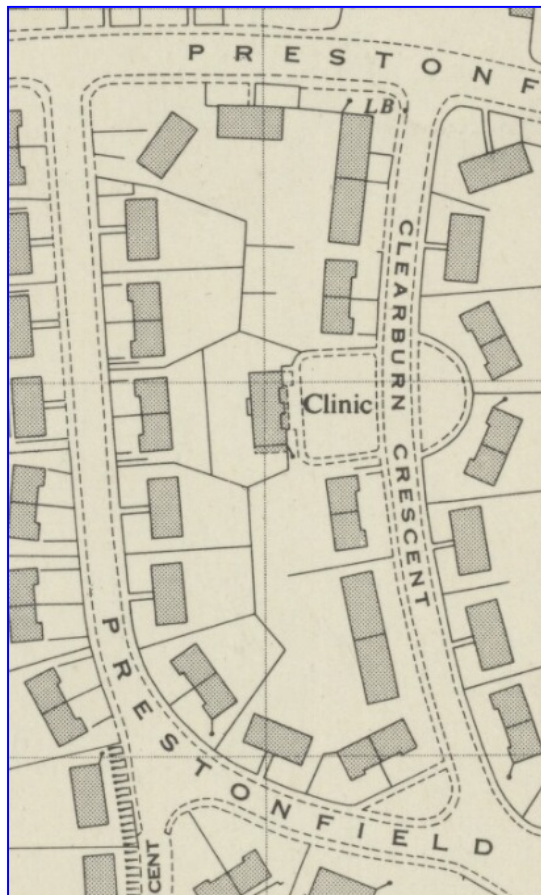


Figure 4: Extract from Ordnance Survey map, 1949

## 5 RESULTS

### 5.1 The Exterior

5.1.1 The Princess Elizabeth Nursery School (first floor) and Clinic (ground floor) is a five by one bay two-story brick and roughcast building with a hipped slate roof. The main elevation to the south has three central bays with a single bay to each side projecting with double timber sash-and-case windows (Figure 5; Plates 1 - 3). The front entrance has a porch with double timber door with original fittings (Plate 4 & 5), double windows flanking. A balcony overlies the central three bays supported by four brick columns. Four bays lie to the first floor, glazed doorways to the outer and timber sash-and-case windows to the centre. The north elevation provides access to the Nursery School to the first floor level from a concrete stair leading to a central modern timber door with another timber sash-and-case and window above (Plate 6). Moving around to the west elevation, this is a multi-bay two-storey elevation with a number of timber sash-and-case windows throughout with a tall central chimney (Figure 6; Plates 7 - 9). There is a small walkway to the south side of the elevation rising up to another balcony on the south side. The south elevation is relatively plain, with a balcony below and no other features apart from a small fire escape door to the east side (Plates 10 & 11).

### 5.2 The Interior: Ground Floor

5.2.1 The ground floor of the building was a former Clinic, the main entrance to the east, the porch with an additional double door with glazing (Figure 7; Plate 12). This leads to a thin north/south corridor, Room 0/1, providing access to the rest of the rooms through original timber panelled doors, at least one of which (Room 0/5a) retains its original fittings (Plate 13). Room 0/2 is the original dispensary with a hatch to its south wall (Plates 14 & 15). A blocked fireplace is located to the west wall, and it is matched to the east wall of Room 0/3, with a decorative surround still in place (Plate 16). Rooms 0/4 and 0/5a consist of former clinic rooms with frosted west wall windows with a former central chimney flue between, although this has been replaced on both sides by a modern brick construction (Plates 17 & 18). Another clinic, Room 0/6, is located to the south-west corner of the building, again with frosted windows to the west wall (Plate 19). Finally, a small storage room, 0/7, is located to the south-east of the building with an additional fire exit door to the south wall (Plate 20).

### 5.3 The Interior: First Floor

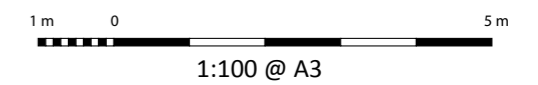
5.3.1 As mentioned above, the former nursery has a separate entrance to the Clinic, with an external stair rising to a doorway in the centre of the north elevation. This leads into a small east/west corridor from which the main schoolroom, Room 1/1, can be accessed, as well as a thin north/south corridor to the ancillary rooms (Figure 7). Room 1/1 takes up most of the building, a large open plan nursery providing access to both the east balcony (Plates 21 – 24). Room 1/3 is a small teaching room/office with the remains of the fireplace surround not *in situ* but still present, identical to that seen to Room 0/3a to the ground floor (Plate 25). There are also fitted cupboards to the north wall. Rooms 1/4 and 1/5 are the children's changing room and bathroom respectively, with small original fitted cubicles and, again, fitted cupboards to the north wall (Plates 26 & 27). Room 1/6 is a small teacher's toilet, with 1/7 a small kitchen adjacent with a glazed door and flanking glazed windows (Plate 28). Finally, Room 1/8 is a teacher's office with single window in the west wall (Plate 29).



Figure 5: East Elevation



Figure 6: West Elevation



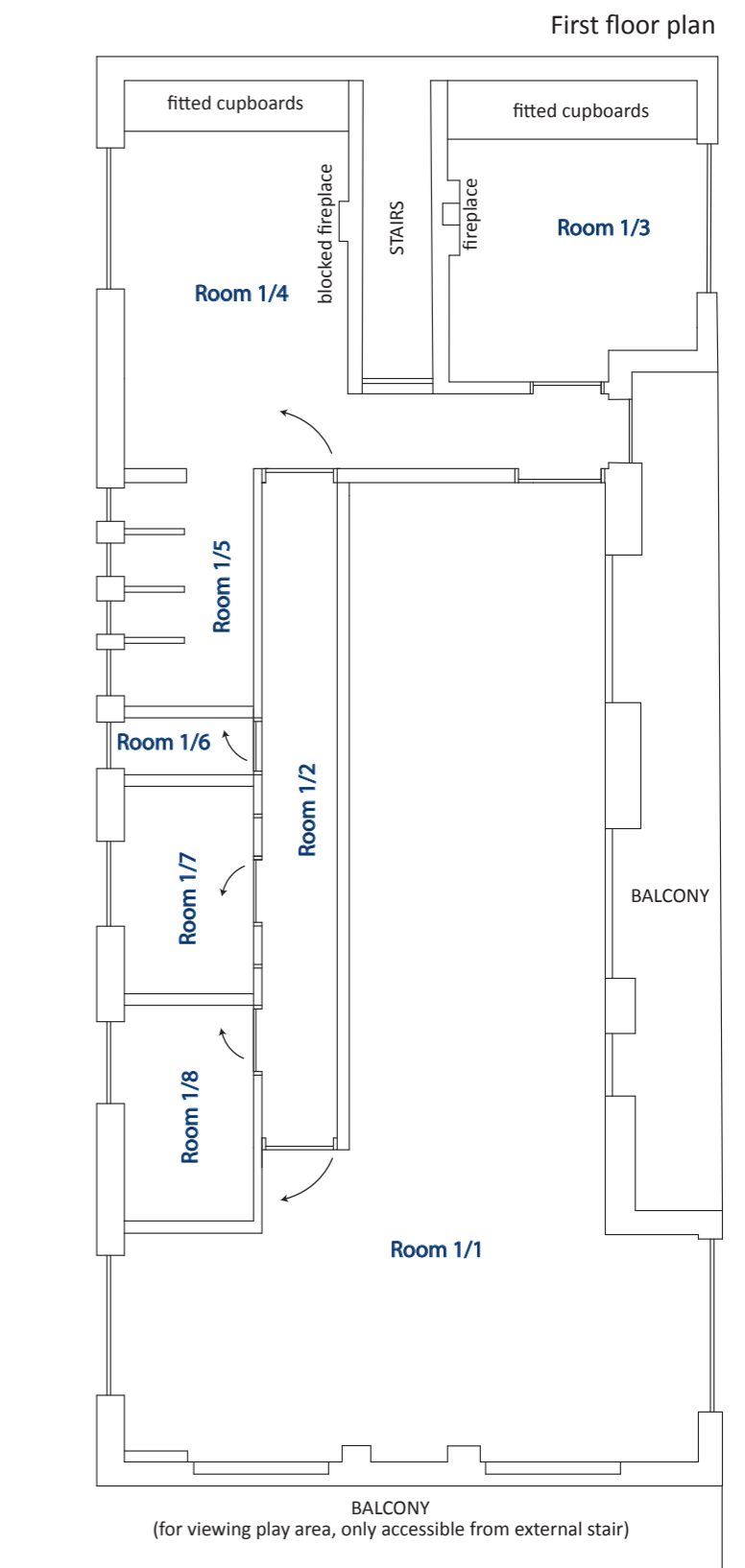
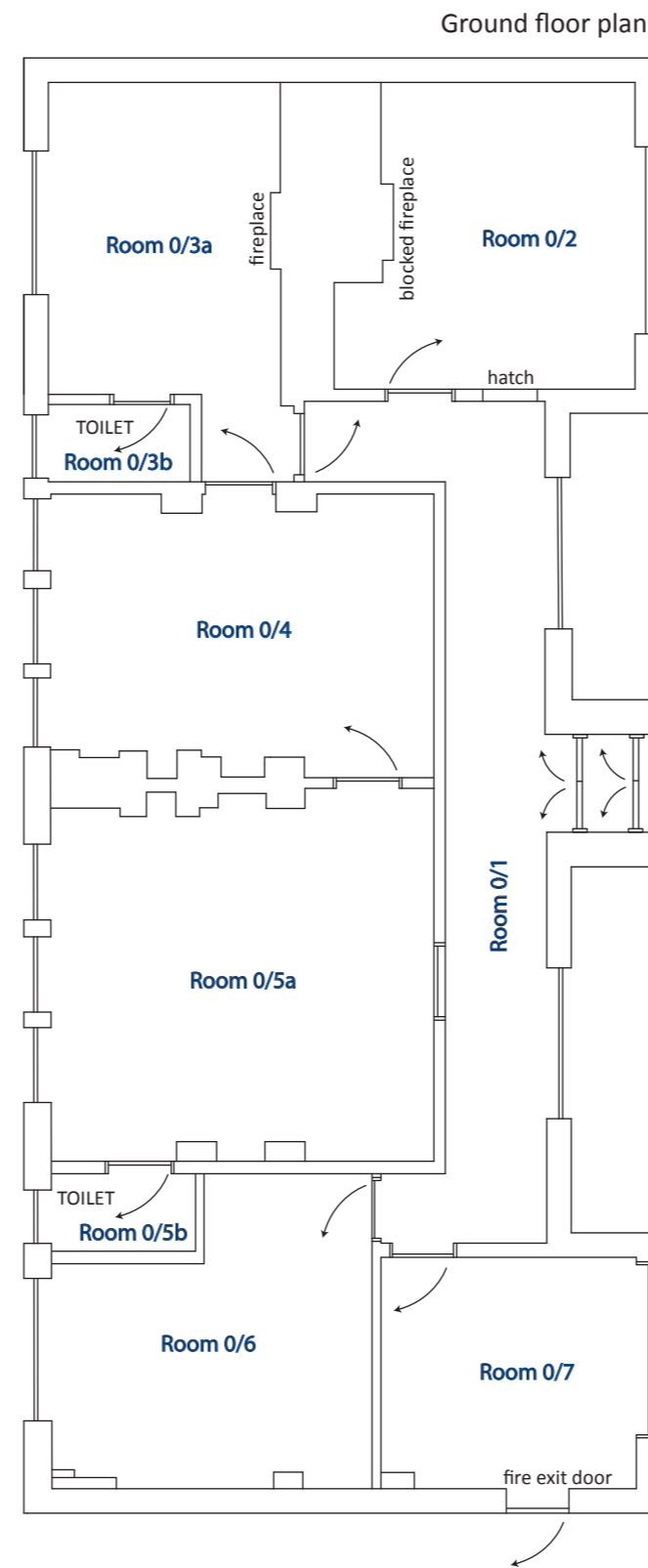


Figure 7: Princess Elizabeth Nursery School, ground floor and first floor plan





Plate 1: East elevation, general view from the east



Plate 2: East elevation, general view of south side from the north-east





Plate 3: East elevation, general view of the north-side from the south-east



Plate 4: East elevation, detail of front entrance from the east





Plate 5: East elevation, detail of fittings to main entrance, from the south



Plate 6: North elevation, general view from the north-west





Plate 7: North & West elevations, general view from the north-east



Plate 8: West elevation, general view of south side from the north-east





Plate 9: West elevation, detail of chimney from the NNE



Plate 10: South elevation, general view from the SSW



Plate 11: South elevation, detail of doorway from the SSW



Plate 12: Room 0/1, detail from the main entrance from the north-east



Plate 13: Room 0/5a, detail of original door fittings from the west



Plate 14: Room 0/1, detail of hatch in the north wall from the south





Plate 15: Room 0/2, detail of hatch in the south wall from the north-west



Plate 16: Room 0/3, detail of fireplace surround in the east wall from the west





Plate 17: Room 0/4, general view from the south



Plate 18: Room 0/5a, general view from the north-east



Plate 19: Room 0/6, general view from the east



Plate 20: Room 0/7, detail of the door in the south wall from the north



Plate 21: Room 1/1, general view from the south



Plate 22: Room 1/1, general view from the north





Plate 23: Room 1/1, general view of west wall (south side) from the east



Plate 24: Room 1/1, general view from the south-east



Plate 25: Room 1/3, detail of fireplace and removed surround from the east



Plate 26: Room 1/4, general view from the south-east



Plate 27: Room 1/4 & 1/5, general view from the north-east



Plate 28: Room 1/2, detail of door to Room 1/7 from the south-east





Plate 29: Room 1/8, detail of west wall window from the east

## 6 DISCUSSION

- 6.1 The Nursery and Clinic was built in one phase in the late 1920s/early 1930s. The exterior has remained as it was originally constructed, with a much neater and ordered east elevation to the roadside and a more ancillary and messy rear west elevation. Internally, the building also has retained its original layout, although some of the original fixtures and fittings have been replaced over time to modernise the building, with fireplaces blocked-up and replaced, and door fittings upgraded. However, the main doors into the building at ground floor level and some original door fittings have survived.

## 7 CONCLUSIONS & FURTHER WORKS

- 7.1 No further historic building recording is recommended prior to demolition, although this will need to be confirmed by the CEC Archaeology Service on behalf of the CEC.

## 8 REFERENCES

### 8.1 Bibliographical references

Scottish Planning Policy SPP23. 2008 *Archaeology and Planning*. Scottish Government Nov 2008.

Scottish Government 2011 *Planning and Archaeology 2/2011*.

### 8.2 Cartographic references

1920 Ordnance Survey *Edinburghshire Sheet III.SE*

1935 Ordnance Survey *Edinburghshire Sheet III.SE*

1949 Ordnance Survey *Edinburgh Sheet NT2771 wick Sheet XXV.3.124*

## APPENDIX 1: PHOTOGRAPHIC RECORD

## Black &amp; White Print &amp; Colour Digital Film #1

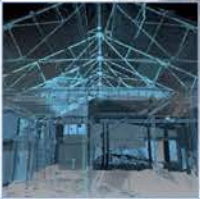
Frame	Room	Description	Taken From	Date
1	1/1	General view	SE	02/06/2016
2 – 3	1/1	General view of S end (W wall)	E	02/06/2016
4 – 5	1/1	General view	N	02/06/2016
6 – 7	1/1	General view	S	02/06/2016
8 – 9	0/1	Detail of letterbox to the exterior side of the front door	S	02/06/2016
10 – 11	0/1	Detail of door	NW	02/06/2016
12 – 13	0/1	Detail of hatch	S	02/06/2016
14 – 15	0/6	Detail of window	E	02/06/2016
16 – 17	0/7	General view	SW	02/06/2016
18 – 19	0/7	Detail of door in S wall	N	02/06/2016
20 – 21	0/5a	Detail of door fittings	SSW	02/06/2016
22 – 23	0/5b	Detail of window	E	02/06/2016
24 – 25	0/5a	Detail of door	W	02/06/2016
26 – 27	0/5a	General view	NE	02/06/2016
28 – 29	0/2	Detail of hatch	NW	02/06/2016
30 – 31	0/3a	Detail of fireplace	W	02/06/2016
32 – 33	0/3a	General view showing window	SE	02/06/2016
34 – 35	0/4	General view	E	02/06/2016
36	-	Registration	-	02/06/2016

## Black &amp; White Print &amp; Colour Digital Film #2

Frame	Room	Description	Taken From	Date
1 – 9	-	Unassigned	-	
10 – 11	E Elevation	Detail of double window	E	02/06/2016
12	N Elevation	Detail of under-stair hatch door	E	02/06/2016
13	N Elevation	General view	NE	02/06/2016
14	S Elevation	Detail of door	NWW	02/06/2016
15	S Elevation	General view	NW	02/06/2016
16	W Elevation	General view of N side	SW	02/06/2016
17	W Elevation	Detail of chimney	NW	02/06/2016
18	W Elevation	General view of S side	NW	02/06/2016
19	N Elevation	General view	NEE	02/06/2016
20 – 21	E Elevation	Detail of N-facing side of porch showing window	N	02/06/2016
22	E Elevation	General view of S side	NE	02/06/2016
23	E Elevation	General view of N side	SE	02/06/2016
24	E Elevation	General view	E	02/06/2016
25 – 26	E Elevation	Detail of door	E	02/06/2016
27 – 28	1/3	Detail of fireplace	E	02/06/2016
29 – 30	1/4	General view showing window	SE	02/06/2016
31 – 32	1/4	General view	NE	02/06/2016
33 – 34	1/2	Detail of door to Room 1/7	SE	02/06/2016
35	1/8	Detail of window	E	02/06/2016
36	-	Registrations	-	02/06/2016

## APPENDIX 2: DISCOVERY AND EXCAVATION IN SCOTLAND (DES) REPORT

<b>LOCAL AUTHORITY:</b>	City of Edinburgh
<b>PROJECT TITLE/SITE NAME:</b>	Princess Elizabeth Nursery School, 14 Clearburn Crescent
<b>PROJECT CODE:</b>	AOC 23468
<b>PARISH:</b>	Edinburgh (City of)
<b>NAME OF CONTRIBUTOR:</b>	Diana Sproat
<b>NAME OF ORGANISATION:</b>	AOC Archaeology Group
<b>TYPE(S) OF PROJECT:</b>	Historic Building Recording
<b>NMRS NO(S):</b>	None
<b>SITE/MONUMENT TYPE(S):</b>	School
<b>SIGNIFICANT FINDS:</b>	None
NGR (2 letters, 6 figures)	NT 27500 71697
<b>START DATE (this season)</b>	3 <sup>rd</sup> June 2016
<b>END DATE (this season)</b>	3 <sup>rd</sup> June 2016
<b>PREVIOUS WORK (incl. DES ref.)</b>	None
<b>MAIN (NARRATIVE) DESCRIPTION: (May include information from other fields)</b>	<p>AOC Archaeology Group was commissioned by Invincible Scotland Trust to undertake an historic building record of the former Princess Elizabeth Nursery School at 14 Clearburn Crescent, Edinburgh, prior to the demolition of the building to construct new dwellings. The works were required as a condition of planning consent.</p> <p>The Nursery was built in one phase in the late 1920s/early 1930s. The exterior has remained as it was originally constructed, with a much neater and ordered east elevation to the roadside and a more ancillary and messy rear west elevation. Internally, the building also has retained its original layout, although some of the original fixtures and fittings have been replaced over time to modernise the building, with fireplaces blocked-up and replaced, and door fittings upgraded. However, the main doors into the building at ground floor level and some original door fittings have survived.</p>
<b>PROPOSED FUTURE WORK:</b>	None
<b>CAPTION(S) FOR ILLUSTRS:</b>	None
<b>SPONSOR OR FUNDING BODY:</b>	Invincible Scotland Trust
<b>ADDRESS OF MAIN CONTRIBUTOR:</b>	AOC Archaeology Group; Edgefield Road Industrial Estate; Loanhead, Midlothian EH20 9SY
<b>EMAIL ADDRESS:</b>	admin@aocarchaeology.com
<b>ARCHIVE LOCATION</b>	Archive to be deposited in NMRS



AOC Archaeology Group, Edgefield Industrial Estate, Edgefield Road, Loanhead EH20 9SY  
tel: 0131 440 3593 | fax: 0131 440 3422 | e-mail: [edinburgh@aocarchaeology.com](mailto:edinburgh@aocarchaeology.com)

[www.aocarchaeology.com](http://www.aocarchaeology.com)