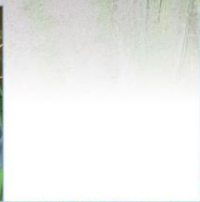


# South Gilmerton Farm, Edinburgh

## Archaeological Evaluation: Data Structure Report

**AOC 23277**



## South Gilmerton Farm, Edinburgh Archaeological Evaluation: Data Structure Report

On Behalf of:	Miller Homes Ltd
National Grid Reference (NGR):	NT 29529 68361
AOC Project No:	23277
OASIS No:	aocarcha1-258256
Prepared by:	Ross Murray
Date:	13 <sup>th</sup> July 2016

This document has been prepared in accordance with AOC standard operating procedures.

Author: Ross Murray	Date: 13 <sup>th</sup> July 2016
Approved by: Martin Cook	Date: 22 <sup>nd</sup> July 2016
Draft/Final Report Stage: Draft	Date: 22 <sup>nd</sup> July 2016

**Enquiries to:** AOC Archaeology Group  
Edgefield Industrial Estate  
Edgefield Road  
Loanhead  
EH20 9SY

Tel. 0131 440 3593  
Fax. 0131 440 3422  
e-mail. [admin@aocarchaeology.com](mailto:admin@aocarchaeology.com)



## Contents

	Page
List of Illustrations .....	3
List of Plates .....	3
Abstract.....	4
1 INTRODUCTION .....	5
1.1 Background .....	5
1.2 Site Location.....	5
1.3 Archaeological Background.....	5
2 OBJECTIVES .....	5
3 METHODOLOGY .....	6
4 RESULTS .....	6
5 CONCLUSION AND RECOMMENDATIONS.....	8
6 REFERENCES .....	9
APPENDIX 1: Trench Descriptions .....	11
APPENDIX 2: Photographic Register .....	19
APPENDIX 3: ' <i>Discovery and Excavation in Scotland</i> ' Report.....	21

## List of Illustrations

Figure 1: Site Location Plan

Figure 2: Trench Location Plan overlying OS 1st Edition

Figure 3: Plan of Archaeological Features

Figure 4: Plan of Archaeological Features

## List of Plates

Plate 1: East-facing section of Ditch 2601

Plate 2: View of possible stone structure (2603 and 2604)

## Abstract

---

This report presents the results of an archaeological evaluation undertaken in relation to a proposed housing development at South Gilmerton Farm, Edinburgh (NGR: NO 29529 68361).

The evaluation required a 10% trenching sample (7400m<sup>2</sup> linear metres) of the proposed 7.4 hectare development area. The area is currently used for arable agriculture.

Two post-medieval boundary ditches, one containing two sherds of 17<sup>th</sup>/18<sup>th</sup> century green-glazed ceramic, were present. In addition, a possible small stone structure, likely to be contemporary with the ditches, and two pits relating to the historic mining activity in the area were also recorded.

## 1 INTRODUCTION

### 1.1 Background

- 1.1.1 AOC Archaeology Group was commissioned by Miller Homes Ltd to undertake an archaeological evaluation on a 7.4 hectare land parcel at South Gilmerton Farm, Edinburgh. The evaluation was undertaken in order to satisfy the requirements of the local planning authority, City of Edinburgh Council, who are advised on archaeological matters by the City of Edinburgh Council Archaeological Service (CECAS). The works were conducted according to the terms of a *Written Scheme of Investigation* (AOC 2016) approved by CECAS on behalf of City of Edinburgh Council and in accordance with the principles set out in *Scottish Planning Policy* (Scottish Government 2014) and *PAN 2/2011 Planning & Archaeology* (Scottish Government 2011).

### 1.2 Site Location

- 1.2.1 The development area is located to the immediate south of Drum Street and west of Gilmerton Station Road, Edinburgh (Figure 1) and covers an area of mixed agricultural land totalling 7.4 ha (centred on NGR: NO 29529 68361). The site is bounded by the aforementioned roads, fields to the south and housing to the east.
- 1.2.2 The development area is undulating with ground ranging from 105 to 125m OD.

### 1.3 Archaeological Background

- 1.3.1 A desk-based assessment conducted by AOC Archaeology prior to this phase of works identified four sites within the development site (Bradley-Lovekin 2014):
- **AOC Site 62:** A quarry recorded as an 'Old Quarry' on the 1855 Ordnance Survey
  - **AOC Site 69:** A mine-shaft recorded on the 1854 Ordnance Survey
  - **AOC Site 70:** A mine-shaft recorded on the 1854 Ordnance Survey
  - **AOC Site 71:** A mine-shaft recorded on the 1894 Ordnance Survey as part of Gilmerton Colliery.
- 1.3.2 Further mine shafts are recorded to the south of the site boundary:
- **AOC Site 67:** A mine-shaft recorded on the 1855 Ordnance Survey
  - **AOC Site 68:** A mine-shaft recorded on the 1855 Ordnance Survey
- 1.3.3 Consequently there was potential for historic mining remains including shafts, quarries, and ancillary structures being encountered during the course of the development.

## 2 OBJECTIVES

- 2.1 The objectives of the archaeological evaluation were:
- i) to determine and assess the character, extent, condition, quality, date and significance of any buried archaeological remains within the proposed development area;
  - ii) to advise and implement an appropriate form of mitigation, such as excavation, post-excavation analyses and publication given the infeasibility of preserving the

archaeological material *in situ*, should significant archaeological remains be encountered.

### 3 METHODOLOGY

- 3.1 The evaluation was undertaken by a tracked excavator equipped with a 2m wide flat-bladed ditching bucket. Excavation was undertaken until the first archaeological horizon or the natural substratum, whichever was encountered first. Excavated trenches were 100m in length where possible and positioned to provide even coverage across the development area. All machine excavation was supervised by a field archaeologist according to AOC Archaeology Group's standard operating procedure and as per the methodology within the *Written Scheme of Investigation* (AOC 2015).

### 4 RESULTS

- 4.1 The archaeological evaluation was undertaken on 27<sup>th</sup> June – 1<sup>st</sup> July 2016. Thirty five trenches were excavated totalling 2934 linear metres (Figure 2). The presence of a quarry, which had been partially backfilled, reduced the area available for evaluation. A full description of the trenches can be found in Appendix 1, the results and significant information is summarised below.
- 4.2 The evaluation trenches revealed an improved topsoil of brown silty loam. This contained occasional shards of 19<sup>th</sup>-20<sup>th</sup> century glass and ceramics. The top-soil ranged from 0.2m to 0.4m in depth. In most of the development area the top-soil immediately overlay a substratum that was a mixture of compacted clays, bedrock, patches of free draining sands and coal seams aligned on a NNW-SSE orientation.
- 4.3 In total, nine trenches contained archaeological features (Figure 3 and 4). Trench 26 contained a SW-NE aligned ditch (2601), also present in Trenches 25, 27, 29, 30 and 35, and the remains of a possible stone structure (2603 and 2604). Ditch (2601) was up to 1m wide and 0.5m deep with steeply sloping sides and a V-shaped base. It was filled with a compact brown/grey clay with occasional small pieces of coal (2602). Two sherds of post-medieval pottery were recovered from the fill of the ditch. A second slot excavated across the ditch in Trench 29 revealed it to have a similar profile and fill as the ditch in Trench 26. Trench 29 also contain another possible linear at the east end, though this may have been an in filled dip in the natural subsoil and a coal filled pit to the west. This lay partially outwith the trench but appeared to circular in plan with a diameter of 2.5m.





Plate 1: East-facing section of Ditch 2601

- 4.4 The putative stone structure consisted of two arrangements of stones, set in to the natural clay, likely to represent the remains of drystone walls of which a single course has survived. The westernmost (2603) was oriented SW- NE, similar to Ditch (2601) which was located 12m to the NW of the structure, and consisted of a line of unshaped pieces of sandstone set in to the natural subsoil, it was 0.5m wide and present across the full 2m wide of the trench. The second stone arrangement (2604) was located 2.8m to the south east and was also formed by blocks of sandstone set in to the natural subsoil. This stone arrangement did not extend the full width of the trench, was C-shaped in plan and measured 2m by 1.5m.





Plate 2: View of possible stone structure (2603 and 2604)

- 4.5 Another ditch was present in Trenches 32, 33 and 34. It was oriented NW- SE and measured 0.9m across. In addition, a pit (3201) was present in Trench 32. This measured 1.7m in diameter and was 0.6m deep. It was filled with bands of grey/brown compact clay flecked with small pieces of coal (3202). A similar feature was present in Trench 34.

## 5 CONCLUSION AND RECOMMENDATIONS

- 5.1 The evaluation revealed archaeologically significant features in the form of two ditches (present in multiple trenches) and the remains of a possible stone structure. Based on the form of the ditches and the artefacts recovered from one section of the ditch, these are likely to represent post-medieval boundary ditches. The remains of the stone structure were very truncated and as they share the same orientation as one of the post-medieval ditches, it is possible they are contemporary with these

features. This structure is likely to represent a small agricultural building or it could also relate to the mining activity present within the development area as evidenced by the coal fill pits.

- 5.2 Further excavation may allow more extensive characterisation of the archaeological remains present within the development area. This will be determined by City of Edinburgh Council, who are advised on archaeological matters by the City of Edinburgh Council Archaeological Service (CECAS).

## 6 REFERENCES

AOC Archaeology 2015, South Gilmerton Farm, Edinburgh Archaeological Works: Written Scheme of Investigation. Unpublished AOC project design

Scottish Government 2014, *Scottish Planning Policy*, 2014

Scottish Government 2011, *Planning And Archaeology 2/2011*

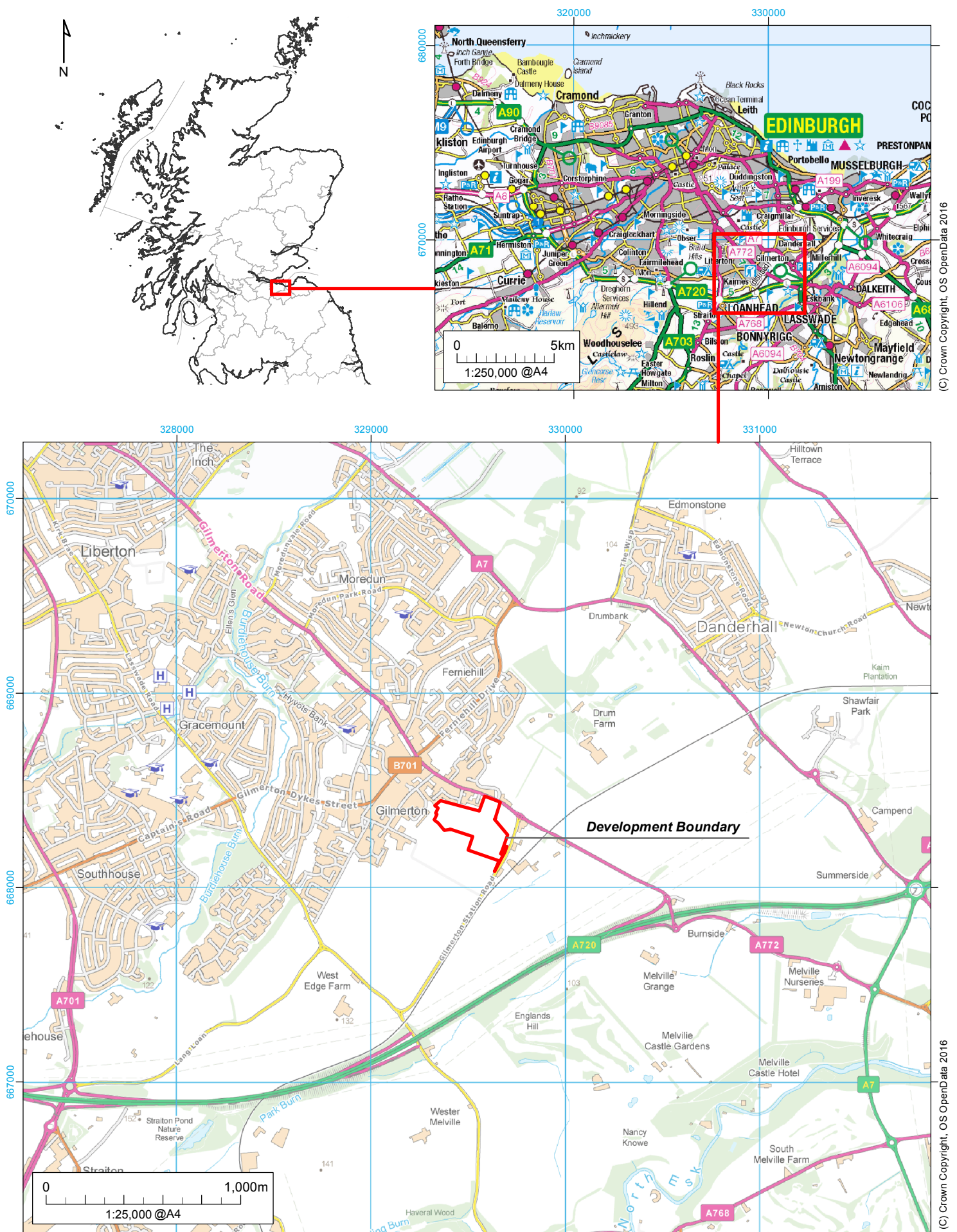
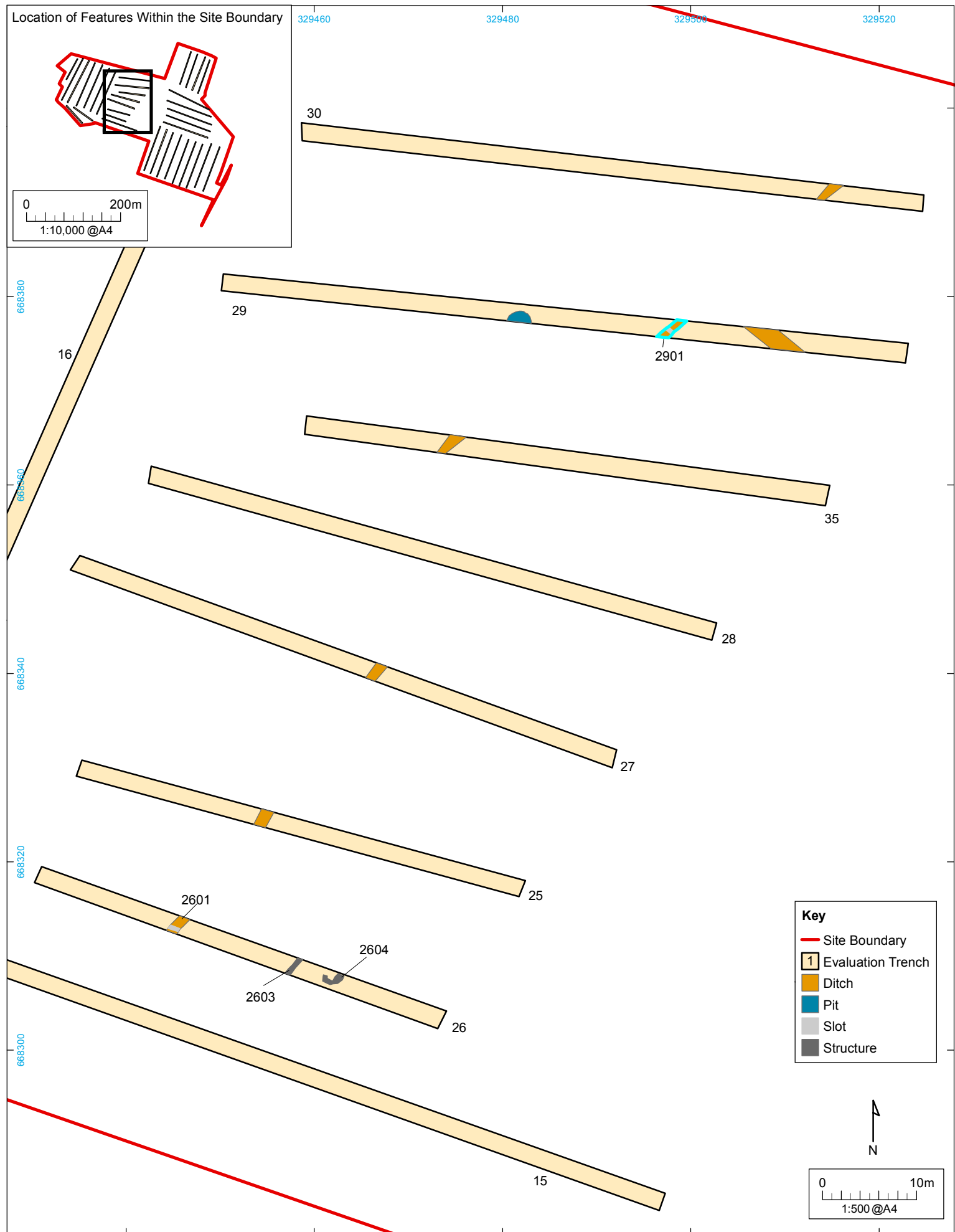


Figure 1: Site Location Plan



01/23277/REP/02/01



01/23277/REP/03/01

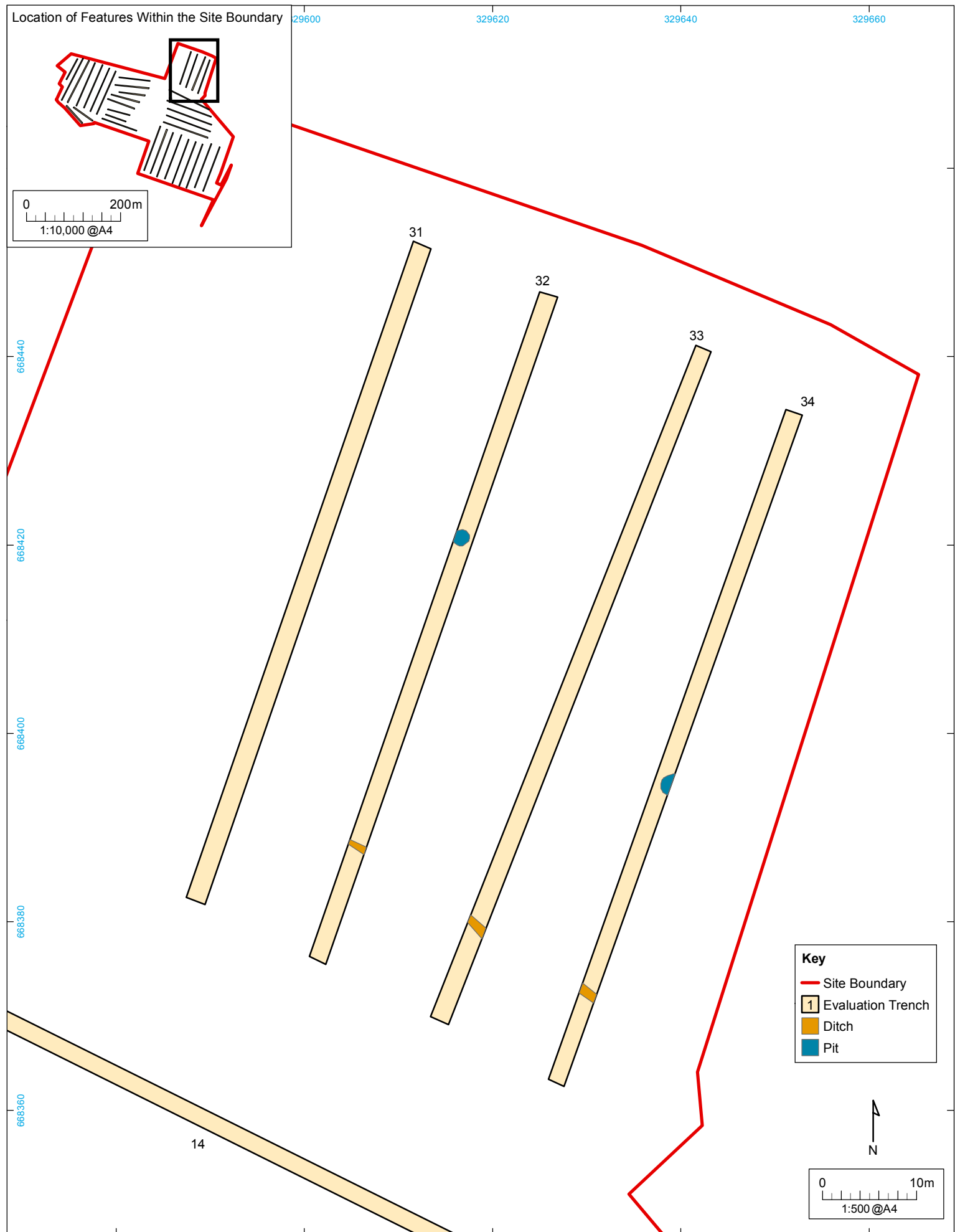


Figure 4: Plan of Archaeological Features

01/23277/REP/04/01



# **South Gilmerton Farm, Archaeological Evaluation: Data Structure Report Section 2: Appendices**

## APPENDIX 1: Trench Descriptions

### Trench 1

<i>Dimensions</i>	100m by 2m
<i>Excavated Orientation</i>	N-S
<i>Top-soil</i>	0.3m
<i>Depth of B-Horizon</i>	0.2m
<i>Depth of Excavation</i>	0.6m
<i>Significant Features</i>	None
<i>Other Features</i>	None
<i>Natural Subsoil</i>	Orange brown clay
<i>Finds</i>	None

### Trench 2

<i>Dimensions</i>	100m by 2m
<i>Excavated Orientation</i>	N-S
<i>Top-soil</i>	0.3m
<i>Depth of B-Horizon</i>	0.2m
<i>Depth of Excavation</i>	0.6m
<i>Significant Features</i>	None
<i>Other Features</i>	None
<i>Natural Subsoil</i>	Orange brown clay
<i>Finds</i>	None

### Trench 3

<i>Dimensions</i>	100m by 2m
<i>Excavated Orientation</i>	N-S
<i>Top-soil</i>	0.3m
<i>Depth of B-Horizon</i>	0.2m
<i>Depth of Excavation</i>	0.6m
<i>Significant Features</i>	None
<i>Other Features</i>	None
<i>Natural Subsoil</i>	Orange brown clay
<i>Finds</i>	None

### Trench 4

<i>Dimensions</i>	100m by 2m
<i>Excavated Orientation</i>	N-S
<i>Top-soil</i>	0.35m
<i>Depth of B-Horizon</i>	0.1m
<i>Depth of Excavation</i>	0.5m
<i>Significant Features</i>	None
<i>Other Features</i>	None
<i>Natural Subsoil</i>	Orange brown clay
<i>Finds</i>	None

### Trench 5

<i>Dimensions</i>	100m by 2m
<i>Excavated Orientation</i>	N-S
<i>Top-soil</i>	0.4m
<i>Depth of B-Horizon</i>	Up to 0.3m at N end
<i>Depth of Excavation</i>	0.8m
<i>Significant Features</i>	None
<i>Other Features</i>	None

*Natural Subsoil* Orange sandy gravel and orange clay  
*Finds* None

#### **Trench 6**

*Dimensions* 100m by 2m  
*Excavated Orientation* N-S  
*Top-soil* 0.4m  
*Depth of B-Horizon* 0.1m  
*Depth of Excavation* 0.5m  
*Significant Features* None  
*Other Features* None  
*Natural Subsoil* Orange sandy gravel and orange clay. Bedrock at 50m  
*Finds* None

#### **Trench 7**

*Dimensions* 100m by 2m  
*Excavated Orientation* NE-SW  
*Top-soil* 0.4m  
*Depth of B-Horizon* 0.3m  
*Depth of Excavation* 0.7m  
*Significant Features* None  
*Other Features* None  
*Natural Subsoil* Orange brown clay and grey clay  
*Finds* None

#### **Trench 8**

*Dimensions* 100m by 2m  
*Excavated Orientation* NE-SW  
*Top-soil* 0.3m  
*Depth of B-Horizon* 0.15m  
*Depth of Excavation* 0.5m  
*Significant Features* None  
*Other Features* None  
*Natural Subsoil* Orange brown clay and grey clay  
*Finds* None

#### **Trench 9**

*Dimensions* 100m by 2m  
*Excavated Orientation* NE-SW  
*Top-soil* 0.3m  
*Depth of B-Horizon* 0.15m  
*Depth of Excavation* 0.5m  
*Significant Features* None  
*Other Features* None  
*Natural Subsoil* Orange brown clay and grey clay  
*Finds* None

#### **Trench 10**

*Dimensions* 100m by 2m  
*Excavated Orientation* E-W  
*Top-soil* 0.35m and at 80m 0.5m  
*Depth of B-Horizon* 0.1m and at 80m 0.3m  
*Depth of Excavation* 0.9m  
*Significant Features* None

<i>Other Features</i>	None
<i>Natural Subsoil</i>	Orange brown clay and bedrock
<i>Finds</i>	None

#### **Trench 11**

<i>Dimensions</i>	100m by 2m
<i>Excavated Orientation</i>	E-W
<i>Top-soil</i>	0.35m and at 80m 0.5m
<i>Depth of B-Horizon</i>	0.1m and at 80m 0.3m
<i>Depth of Excavation</i>	0.9m
<i>Significant Features</i>	None
<i>Other Features</i>	None
<i>Natural Subsoil</i>	Orange brown clay and bedrock
<i>Finds</i>	None

#### **Trench 12**

<i>Dimensions</i>	100m by 2m
<i>Excavated Orientation</i>	E-W
<i>Top-soil</i>	0.35m and at 80m 0.5m
<i>Depth of B-Horizon</i>	0.1m and at 80m 0.3m
<i>Depth of Excavation</i>	0.9m
<i>Significant Features</i>	None
<i>Other Features</i>	None
<i>Natural Subsoil</i>	Orange brown clay and bedrock
<i>Finds</i>	None

#### **Trench 13**

<i>Dimensions</i>	100m by 2m
<i>Excavated Orientation</i>	E-W
<i>Top-soil</i>	0.35m and at 80m 0.5m
<i>Depth of B-Horizon</i>	0.1m and at 80m 0.3m
<i>Depth of Excavation</i>	0.9m
<i>Significant Features</i>	None
<i>Other Features</i>	None
<i>Natural Subsoil</i>	Orange brown clay and bedrock
<i>Finds</i>	None

#### **Trench 14**

<i>Dimensions</i>	100m by 2m
<i>Excavated Orientation</i>	E-W
<i>Top-soil</i>	0.35m and at 80m 0.5m
<i>Depth of B-Horizon</i>	0.1m and at 80m 0.3m
<i>Depth of Excavation</i>	0.9m
<i>Significant Features</i>	None
<i>Other Features</i>	None
<i>Natural Subsoil</i>	Orange brown clay and bedrock
<i>Finds</i>	None

#### **Trench 15**

<i>Dimensions</i>	100m by 2m
<i>Excavated Orientation</i>	NW-SE
<i>Top-soil</i>	0.45m – 1.2m – 0.9m
<i>Depth of B-Horizon</i>	N/A
<i>Depth of Excavation</i>	0.5m – 1.2m – 0.95m

<i>Significant Features</i>	None
<i>Other Features</i>	None
<i>Natural Subsoil</i>	Orange and grey clay and bedrock
<i>Finds</i>	None

#### **Trench 16**

<i>Dimensions</i>	100m by 2m
<i>Excavated Orientation</i>	NW-SE
<i>Top-soil</i>	0.4m – 1.5m – 1.4m
<i>Depth of B-Horizon</i>	N/A
<i>Depth of Excavation</i>	0.4m – 1.5m – 1.4m
<i>Significant Features</i>	Industrial deposits
<i>Other Features</i>	None
<i>Natural Subsoil</i>	Orange brown clay and bedrock
<i>Finds</i>	None

#### **Trench 17**

<i>Dimensions</i>	100m by 2m
<i>Excavated Orientation</i>	NE-SW
<i>Top-soil</i>	0.5m – 0.55m
<i>Depth of B-Horizon</i>	N/A
<i>Depth of Excavation</i>	0.5m – 0.6m
<i>Significant Features</i>	Industrial deposits
<i>Other Features</i>	None
<i>Natural Subsoil</i>	Orange brown clay and bedrock
<i>Finds</i>	None

#### **Trench 18**

<i>Dimensions</i>	100m by 2m
<i>Excavated Orientation</i>	SW-NE
<i>Top-soil</i>	1.4m – 0.55m
<i>Depth of B-Horizon</i>	N/A
<i>Depth of Excavation</i>	1.45m – 0.6m
<i>Significant Features</i>	Industrial deposits
<i>Other Features</i>	None
<i>Natural Subsoil</i>	Yellow orange/brown silty clay
<i>Finds</i>	None

#### **Trench 19**

<i>Dimensions</i>	100m by 2m
<i>Excavated Orientation</i>	NE-SW
<i>Top-soil</i>	1m – 0.8m – 0.65m
<i>Depth of B-Horizon</i>	N/A
<i>Depth of Excavation</i>	1.05m – 0.8m – 0.7m
<i>Significant Features</i>	Industrial deposits
<i>Other Features</i>	None
<i>Natural Subsoil</i>	Orange and grey clay and bedrock
<i>Finds</i>	None

#### **Trench 20**

<i>Dimensions</i>	100m by 2m
<i>Excavated Orientation</i>	N-S
<i>Top-soil</i>	0.3m – 0.5m – 0.3m

<i>Depth of B-Horizon</i>	0.55m – 0.5m
<i>Depth of Excavation</i>	0.3m – 0.85m – 1m
<i>Significant Features</i>	None
<i>Other Features</i>	None
<i>Natural Subsoil</i>	Orange and grey clay and bedrock. Yellow brown sand at S end
<i>Finds</i>	None

#### **Trench 21**

<i>Dimensions</i>	100m by 2m
<i>Excavated Orientation</i>	N-S
<i>Top-soil</i>	0.3m
<i>Depth of B-Horizon</i>	0.1 – 0.45m
<i>Depth of Excavation</i>	0.6m – 0.3m – 0.85m
<i>Significant Features</i>	None
<i>Other Features</i>	None
<i>Natural Subsoil</i>	Orange brown clay and bedrock w/ distinctive coal seams aligned NNE-SSW
<i>Finds</i>	None

#### **Trench 22**

<i>Dimensions</i>	50m by 2m
<i>Excavated Orientation</i>	N-S
<i>Top-soil</i>	0.3m
<i>Depth of B-Horizon</i>	0.6m – 0.1m – 0.1m
<i>Depth of Excavation</i>	1m – 0.45m – 0.4m
<i>Significant Features</i>	None
<i>Other Features</i>	None
<i>Natural Subsoil</i>	Orange brown clay and bedrock
<i>Finds</i>	None

#### **Trench 23**

<i>Dimensions</i>	50m by 2m
<i>Excavated Orientation</i>	E-W
<i>Top-soil</i>	0.2m – 0.25m – 0.3m
<i>Depth of B-Horizon</i>	0.35m – 0.5m – 0.35m
<i>Depth of Excavation</i>	0.65m – 0.1m – 0.7m
<i>Significant Features</i>	None
<i>Other Features</i>	None
<i>Natural Subsoil</i>	Orange brown clay and bedrock w/ distinctive coal seams aligned NNE-SSW
<i>Finds</i>	None

#### **Trench 24**

<i>Dimensions</i>	50m by 2m
<i>Excavated Orientation</i>	E-W
<i>Top-soil</i>	0.3m – 0.35m
<i>Depth of B-Horizon</i>	0.4m – 0.5m – 0.2m
<i>Depth of Excavation</i>	0.85m – 1.1m – 0.6m
<i>Significant Features</i>	None
<i>Other Features</i>	None
<i>Natural Subsoil</i>	Orange brown clay and bedrock w/ distinctive coal seams aligned NNE-SSW
<i>Finds</i>	None

#### **Trench 25**

<i>Dimensions</i>	45m by 2m
<i>Excavated Orientation</i>	E-W



<i>Top-soil</i>	0.3m
<i>Depth of B-Horizon</i>	0.1m – 0.2m
<i>Depth of Excavation</i>	0.5m – 0.4m – 0.6m
<i>Significant Features</i>	Linear feature [2601] aligned NE-SW ca 1.1m wide
<i>Other Features</i>	None
<i>Natural Subsoil</i>	Orange and grey clay and bedrock
<i>Finds</i>	None

#### **Trench 26**

<i>Dimensions</i>	48m by 2m
<i>Excavated Orientation</i>	E-W
<i>Top-soil</i>	0.3m – 0.35m
<i>Depth of B-Horizon</i>	0.15m – 0.2m – 0.1m
<i>Depth of Excavation</i>	0.55m – 0.6m – 0.5m
<i>Significant Features</i>	Linear feature [2601] aligned NNE-SSW. 1.2m wide. V-shaped ditch, 2m x 1m x 0.5m, steep sides and 'v' base (2602) – Mid brown-grey clay, lumps of coal and degraded stone – 2x frags of green glaze pottery
<i>Other Features</i>	None
<i>Natural Subsoil</i>	Orange and grey clay and bedrock
<i>Finds</i>	None

#### **Trench 27**

<i>Dimensions</i>	60m by 2m
<i>Excavated Orientation</i>	E-W
<i>Top-soil</i>	0.3m – 0.35m – 0.3m
<i>Depth of B-Horizon</i>	0.3m – 0.15m – 0.05m
<i>Depth of Excavation</i>	0.6m – 0.5m – 0.6m
<i>Significant Features</i>	Linear feature [2601]
<i>Other Features</i>	None
<i>Natural Subsoil</i>	Orange and grey clay and bedrock
<i>Finds</i>	None

#### **Trench 28**

<i>Dimensions</i>	62m by 2m
<i>Excavated Orientation</i>	E-W
<i>Top-soil</i>	0.3m
<i>Depth of B-Horizon</i>	0.15m – 0.4m
<i>Depth of Excavation</i>	0.55m – 0.6m – 0.7m
<i>Significant Features</i>	Linear feature [2601]
<i>Other Features</i>	None
<i>Natural Subsoil</i>	Orange and grey clay and bedrock
<i>Finds</i>	None

#### **Trench 29**

<i>Dimensions</i>	73m by 2m
<i>Excavated Orientation</i>	E-W
<i>Top-soil</i>	0.3m
<i>Depth of B-Horizon</i>	0.1m – 0.2m
<i>Depth of Excavation</i>	0.45m – 0.5m
<i>Significant Features</i>	Linear feature [2601] aligned NNE-SSW. 0.8m wide Large circular pit filled w/ coal waste Linear ditch aligned NW-SE
<i>Other Features</i>	None

*Natural Subsoil* Orange and grey clay and bedrock  
*Finds* None

### **Trench 30**

*Dimensions* 66m by 2m  
*Excavated Orientation* E-W  
*Top-soil* 0.3m  
*Depth of B-Horizon* 0.2m – 0.15m – 0.05m  
*Depth of Excavation* 0.5m – 0.7m – 0.45m  
*Significant Features* Linear feature [2601] aligned NE-SW ca 0.8m wide  
*Other Features* None  
*Natural Subsoil* Orange and grey clay and bedrock  
*Finds* None

### **Trench 31**

*Dimensions* 72m by 2m  
*Excavated Orientation* NE-SW  
*Top-soil* 0.3m  
*Depth of B-Horizon* 0.2m – 0.15m – 0.05m  
*Depth of Excavation* 0.5m – 0.5m – 0.45m  
*Significant Features* None  
*Other Features* None  
*Natural Subsoil* Orange and grey clay and bedrock  
*Finds* None

### **Trench 32**

*Dimensions* 74m by 2m  
*Excavated Orientation* NE-SW  
*Top-soil* 0.3m  
*Depth of B-Horizon* 0.2m – 0.15m – 0.05m  
*Depth of Excavation* 0.5m – 0.5m – 0.45m  
*Significant Features* Linear feature aligned NW-SE ca 0.7m wide; Pit [3201] 1.7m diameter and 0.6m deep  
*Other Features* None  
*Natural Subsoil* Orange and grey clay and bedrock  
*Finds* None

### **Trench 33**

*Dimensions* 76m by 2m  
*Excavated Orientation* NE-SW  
*Top-soil* 0.3m  
*Depth of B-Horizon* 0.2m – 0.15m – 0.05m  
*Depth of Excavation* 0.5m – 0.5m – 0.45m  
*Significant Features* Linear feature aligned NW-SE ca 0.9m wide  
*Other Features* None  
*Natural Subsoil* Orange and grey clay and bedrock  
*Finds* None

### **Trench 34**

*Dimensions* 75m by 2m  
*Excavated Orientation* NE-SW  
*Top-soil* 0.3m  
*Depth of B-Horizon* 0.2m – 0.15m – 0.05m  
*Depth of Excavation* 0.5m – 0.5m – 0.45m

<i>Significant Features</i>	Linear feature aligned NW-SE ca 0.9m wide
<i>Other Features</i>	None
<i>Natural Subsoil</i>	Orange and grey clay and bedrock
<i>Finds</i>	None

#### **Trench 35**

<i>Dimensions</i>	56m by 2m
<i>Excavated Orientation</i>	E-W
<i>Top-soil</i>	0.3m
<i>Depth of B-Horizon</i>	0.2m – 0.15m – 0.05m
<i>Depth of Excavation</i>	0.5m – 0.5m – 0.45m
<i>Significant Features</i>	Linear feature aligned NE-SW ca 1.3m wide
<i>Other Features</i>	None
<i>Natural Subsoil</i>	Orange and grey clay and bedrock
<i>Finds</i>	None

## APPENDIX 2: Photographic Register

### Digital Photographs

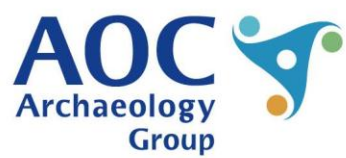
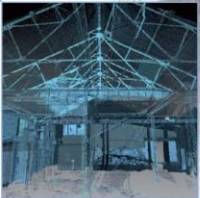
Frame	Description	From
1	Pre-condition view of main access to site	SE
2	Pre-condition view of main access to site	S
3	Pre-condition view of area containing Trenches 1-9	SE
4	Pre-condition view of area containing Trenches 1-9	SE
5	Pre-condition view of area containing Trenches 1-9	SE
6	Pre-condition view of main access to site following removal of gates for plant access	N
7	Pre-condition view of area containing Trenches 1-9	E
8	Pre-condition view of area containing Trenches 10-14	W
9	Pre-condition view of area containing Trenches 10-14	W
10	View of Trench 7	SW
11	View of Trench 6	SW
12	View of Trench 5	SW
13	View of Trench 4	SW
14	View of Trench 3	SW
15	View of Trench 2	SW
16	View of Trench 1	SW
17	Post-condition view of area containing Trenches 1-9	E
18	Post-condition view of area containing Trenches 1-9	E
19	Post-condition view of area containing Trenches 1-9	E
20	Pre-condition view of area containing Trenches 10-14	E
21	Pre-condition view of area containing Trenches 10-14	E
22	Pre-condition view of area containing Trenches 10-14	E
23	View of Trench 7-Backfilled	W
24	View of Trench 8	N
25	View of Trench 9	N
26	View of Trench 10	W
27	View of Trench 11	W
28	View of Trench 12	W
29	View of Trench 13	W
30	View of Trench 14	NW
31	Pre-condition view of area containing Trenches 16, 25-30 and 35	E
32	Pre-condition view of area containing Trenches 16, 25-30 and 35	E
33	Pre-condition view of area containing Trenches 16, 25-30 and 35	E
34	View of Trench 16	W
35	View of Trench 15	W
36	View of Trench 17	W

37	View of Trench 15- view of material filling quarry	S
38	View of Trench 18	SW
39	View of Trench 19	SW
40	View of Trench 20	SW
41	View of Trench 21	SW
42	View of Trench 22	SW
43	View of Trench 23	SW
44	View of Trench 24	SW
45	Pre-condition view of area containing Trenches 31-34	W
46	Pre-condition view of area containing Trenches 31-34	W
47	Pre-condition view of area containing Trenches 31-34	W
48	View of Trench 25	W
49	View of Trench 26	W
50	View of Trench 27	W
51	View of Trench 28	W
52	View of Trench 29	W
53	View of Trench 30	W
54	Trench 29- Coal filled pit	E
55	View of Ditch 2601	E
56	View of N-facing section through Ditch 2601	N
57	View of N-facing section through Ditch 2601	N
58	View of S-facing section through Ditch 2601	S
59	View of Ditch 2601	E
60	View of Ditch 2601	N
61	Registration shot	-
62	View of Ditch 2901	E
63	View of Ditch 2901	W
64	View of Ditch 2901	W
65	View of Ditch 2901	W
66	View of Trench 31	S
67	View of Trench 32	S
68	View of Trench 33	S
69	View of Trench 34	S
70	View of pit 3201	S
71	View of pit 3201	E
72	View of pit 3201	E
73	View of Wall 2603	E
74	View of Wall 2603	N
75	View of Wall 2604	N
76	View of Wall 2604	S
77	View of Walls 2603 and 2604	E

**APPENDIX 3: 'Discovery and Excavation in Scotland' Report**

<b>LOCAL AUTHORITY:</b>	City of Edinburgh Council
<b>PROJECT TITLE/SITE NAME</b>	South Gilmerton Farm, Edinburgh
<b>PROJECT CODE:</b>	AOC 23277
<b>PARISH:</b>	
<b>NAME OF CONTRIBUTOR:</b>	
<b>NAME OF ORGANISATION:</b>	AOC Archaeology Group
<b>TYPE(S) OF PROJECT:</b>	Archaeological Evaluation
<b>NMRS NO(S)</b>	N/A
<b>SITE/MONUMENT TYPE(S):</b>	N/A
<b>SIGNIFICANT FINDS:</b>	Post-medieval ditches, mining structures
<b>NGR (2 letters, 6 figures)</b>	NO 29529 68361
<b>START DATE</b> (this season)	27 <sup>th</sup> June 2016
<b>END DATE</b> (this season)	1 <sup>st</sup> July 2016
<b>PREVIOUS WORK</b> (incl. DES ref.)	None
<b>MAIN (NARRATIVE) DESCRIPTION:</b> (May include information from other fields)	<p>AOC Archaeology undertook an archaeological evaluation in relation to a proposed housing development at South Gilmerton Farm, Edinburgh..</p> <p>The evaluation required a 10% trenching sample (7400m linear metres) of the proposed 7.4 hectare development area. The area is currently used for arable agriculture.</p> <p>Two post-medieval boundary ditches, one containing two sherds of 17<sup>th</sup>/18<sup>th</sup> century green-glazed ceramic, were present. In addition, a possible small stone structure, likely to be contemporary with the ditches, and two pits relating to the historic mining activity in the area were also recorded.</p>
<b>PROPOSED FUTURE WORK:</b>	
<b>CAPTION(S) FOR ILLUSTRS:</b>	---
<b>SPONSOR OR FUNDING BODY:</b>	Miller Homes Ltd
<b>ADDRESS OF MAIN CONTRIBUTOR:</b>	Edgefield Road Industrial Estate, Loanhead, Midlothian, EH20 9SY
<b>EMAIL ADDRESS:</b>	admin@aocarchaeology.com
<b>ARCHIVE LOCATION</b> (intended/deposited)	Archive to be deposited in NMRS





**AOC Archaeology Group**, Edgefield Industrial Estate, Edgefield Road, Loanhead EH20 9SY  
tel: 0131 440 3593 | fax: 0131 440 3422 | e-mail: [admin@aocarchaeology.com](mailto:admin@aocarchaeology.com)

[www.aocarchaeology.com](http://www.aocarchaeology.com)