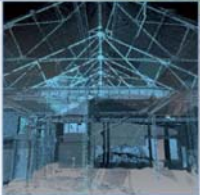
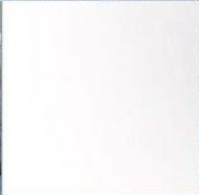


Plot 9, Newbridge, Edinburgh; Archaeological Monitored Top-soil Strip & Excavation Report

OASIS No:1-259093

AOC 23517

12th July 2016



ARCHAEOLOGY

HERITAGE

CONSERVATION

Plot 9, Newbridge, Edinburgh: Archaeological Monitored Topsoil Strip & Excavation

On Behalf of:	GM Mackenzie Ltd Arnhall Business Park 23 Abercrombie Court Westhill Aberdeen AB32 6FE
National Grid Reference (NGR):	NT 12054 73248 (centered)
OASIS No:	1-259093
AOC Project No:	23517
Prepared by:	Stuart Wilson
Illustration by:	Diane Sproat
Date of Fieldwork:	1 st July – 11 th July 2016
Date of Report:	12/07/16

This document has been prepared in accordance with AOC standard operating procedures.

Author: Stuart Wilson **Date:** 12/07/2016

Approved by: Martin Cook **Date:** 01/08/2016

Draft Report Stage: Draft **Date:** 01/08/2016

Enquiries to: AOC Archaeology Group
Edgefield Industrial Estate
Edgefield Road
Loanhead
EH20 9SY

Tel. 0131 440 3593
Fax. 0131 440 3422
e-mail. admin@aocarchaeology.com

Contents		Page
List of Figures		3
List of Plates		3
List of Appendices.....		3
Abstract		4
1 INTRODUCTION		5
1.1 Project Background		5
1.2 Site Location		5
1.3 Archaeological Background.....		5
2 OBJECTIVES		5
3 METHODOLOGY		6
4 RESULTS		6
4.1 Archaeological Excavation		6
5 DISCUSSION & CONCLUSIONS.....		8
6 REFERENCES		9
6.1 Bibliographical references		9
APPENDIX 1: PHOTOGRAPHIC REGISTER		10
APPENDIX 2: CONTEXT REGISTER.....		11
APPENDIX 3: DRAWING REGISTER		12
APPENDIX 4: SAMPLE REGISTER		12
APPENDIX 5: DISCOVERY AND EXCAVATION IN SCOTLAND (DES) REPORT		13

List of Figures

Figure 1: Site location map

Figure 2: Plan of features

List of Plates

Plate 1: South facing section of pit [003]

Plate 2: South west facing section of slot 2B from linear [013]

List of Appendices

Appendix 1: Photographic Register

Appendix 2: Context Register

Appendix 3: Drawing Register

Appendix 4: 'Discovery and Excavation in Scotland' (DES) Entry

Abstract

AOC Archaeology Group was commissioned by GM Mackenzie Ltd to undertake an archaeological monitored top-soil strip and subsequent excavation on Plot 9, a parcel of derelict land associated with a large scale commercial development at Newbridge, Edinburgh (NGR NT 12054 73248).

The archaeological works sought to ascertain the extent and nature of any archaeological remains within the area. However, the site was top-soil stripped without adequate archaeological supervision. After consultation with Mr John Lawson (CECAS) it was decided to clean the site by a combined programme of machine and hand cleaning.

The top-soil strip revealed a small number of sterile pits as well as a cluster of linear ditch features located at the south-western most corner of the Plot. All of the features found had been truncated due to the prior topsoil stripping.

It is likely that these features represent a northerly extension of the medieval field system recorded by AOC Archaeology during 2007 and 2014.

1 INTRODUCTION

1.1 Project Background

- 1.1.1 A programme of archaeological works was required by GM Mackenzie Ltd in respect to a commercial development at Plot 9, Newbridge, Edinburgh. The proposed development lies within the administrative area of City of Edinburgh Council, which is advised on archaeological matters by Mr John Lawson of the City of Edinburgh Archaeology Service (CECAS).
- 1.1.2 A series of archaeological works have been carried out at Newbridge since 2001. As part of the planning conditions GM Mackenzie Ltd now require a further series of works. Due to the significance of material found in the surrounding area, a full topsoil strip of Plot 9 was required (Figure 1).
- 1.1.3 The topsoil strip was initially carried out without an archaeologist on site to supervise the works.

1.2 Site Location

- 1.2.1 The proposed development area is derelict land previously used as part of a chicken farm. The site, centred on NGR NT 12054 73248 was accessible from the A89 and was bounded by the M9 to the North east and the River Almond to the South west.

1.3 Archaeological Background

- 1.3.1 The proposed development area lies within the fragmented remains of a prehistoric landscape centred on Huly Hill (NMRS NT17SW 8), an upstanding prehistoric barrow and stone circle, which is a Scheduled Monument. Excavations in this area in the past have recorded cists and the location of Scotland's first chariot burial.
- 1.3.2 Archaeological works carried out in the first phase of development by AOC in 2007 (Engl & Dunbar, forthcoming) recorded the remains of a medieval field system, including numerous ditches, pits, and two associated kilns. The remains of the probable western extension of the Dere Street Roman road were recorded to the south of Plot 9, together with Bronze Age and Iron Age settlement evidence.
- 1.3.3 In 2014 during the monitored topsoil strip of Plot 7a a section of medieval ditch and significant medieval pottery assemblage was recovered complimenting the medieval finds from earlier phases of work (Duffy & Johnstone, 2014).

2 OBJECTIVES

- 2.1 The objectives of the present archaeological works were:

- to conduct a monitored topsoil strip of the area Plot 9 to expose any potential archaeological features.
- to determine and assess the character, extent, condition, quality, date and significance of any buried archaeological remains within the targeted topsoil strip area;
- identification, excavation, soil sampling and recording of all significant archaeological features within the targeted topsoil strip areas;

- the retrieval of a representative artefact assemblage;
- upon conclusion of the excavation, the preparation of a post-excavation research design (*PERD*) to be agreed with CECAS. The scope and appropriateness of the post-excavation analyses to be employed will be decided upon by CECAS. The *PERD* will be pertinent to the quantity, quality, character, date and condition of retrieved small finds and soil samples when considered against the series of research questions raised by the excavated features;
- the post-excavation analysis of recovered material;
- publication of results of the excavation to bring the findings into the public and academic domain.

3 METHODOLOGY

- 3.1 The initial top-soil strip was to involve the use of a 360 tracked excavator equipped with a 2m wide toothless ditching. The topsoil strip was to continue until the natural sub-soil or first archaeological horizon was reached. However, due to some confusion with the onsite contractor the topsoil strip was completed without archaeological supervision. In some areas the excavations had continued past the subsoil by up to 10 – 20 cm.
- 3.2 After consultation with Mr John Lawson of CECAS a 360 tracked excavator was used to strip the site of all tracks and drag marks before the entire site was a cleaned by hand in order to reduce further damage to any potential archaeology.
- 3.3 Following the surface cleaning of the top-soil stripped areas, all exposed archaeological features were subject to hand excavation. All features were 100% excavated with linear features being 20% excavated.

4 RESULTS

4.1 Archaeological Excavation

- 4.1.1 The works were conducted during 1st July – 11th 2016. The weather conditions during the excavation were variable with short intense periods of heavy rain and sunshine which had a negative effect on the predominantly clay subsoil meaning that frequent cleaning of the areas with archaeological features was often required.
- 4.1.2 Topsoil across site consisted of a medium brown silty loam ranging between 0.4 m - 0.6 m in depth and revealed a mid orange/brown silty clay subsoil. In the North eastern half of the site this was predominantly made ground which reached an approximate depth of 0.6 m.

4.2

4.2.1 *Pits [003], [005], [007]*

Three pits were revealed during the hand cleaning of the site. These were treated as random isolated features and excavated accordingly. All three pits were very truncated with their remaining depths recorded at 0.05 m, 0.07 m and 0.10 m. All three pits consisted of the same mid grey heavily compacted clay fill with no artefacts being retrieved from any of the pits. The damage to the features and lack of artefacts prevent any attempt at dating them.



Plate 1: South facing section of pit [003]

4.2.2 *Linear Ditches [009], [011], [013] & [016]*

At the very south westerly corner of the site a collection of linear features were observed. These features similar to the pits were very truncated with only a shallow deposit surviving. Due to the dry ground conditions the decision was made to box several of the linears to ascertain their true nature and dimensions. The linears varied in size between 0.04 m and 0.09 m in depth and between 0.35 m to 1.20 m in width. All linears were filled by a similar deposit of compacted dark grey silty clay with sub rounded inclusions throughout with the exception of feature [011] which appeared to have a mid brown silty clay base. No finds were retrieved from any of the linears.



Plate 2: South west facing section of slot 2B from linear [013]

5 DISCUSSION & CONCLUSIONS

- 5.1 It is likely that the features recorded within Plot 9 are related to a northerly extension of the medieval field system revealed during the first phase of development (Engl & Dunbar forthcoming) in 2007 and during the top-soil stripping of Plot 7a (Duffy & Johnstone 2014). Given the degree of damage suffered by the site combined with the extensive cleaning and excavation of the recorded features, no further archaeological investigations are recommended within Plot 9. This will require confirmation by, and be at the discretion of, John Lawson of CECAS.

6 REFERENCES

6.1 Bibliographical references

AOC 2016, *WSI Monitored Topsoil Strip Plot 9, Newbridge, Edinburgh* (Unpublished Grey Literature)

Engl, R & Dunbar, L, Forthcoming, '*A Roman Road Runs Through it, Excavations at Newbridge, Edinburgh*' SAIR

Duffy, A & Johnstone, N 2014 '*Monitored Topsoil Strip at Plot 7a Newbridge, Edinburgh Data Structure Report*' Unpublished client report.

Scottish Planning Policy 2014, Archaeology and Planning, Scottish Government 2014

Scottish Government 2011, *Planning and Archaeology 2/2011*

Newbridge Plots 9a, Archaeological Evaluation: Data Structure Report

Section 2: Appendices

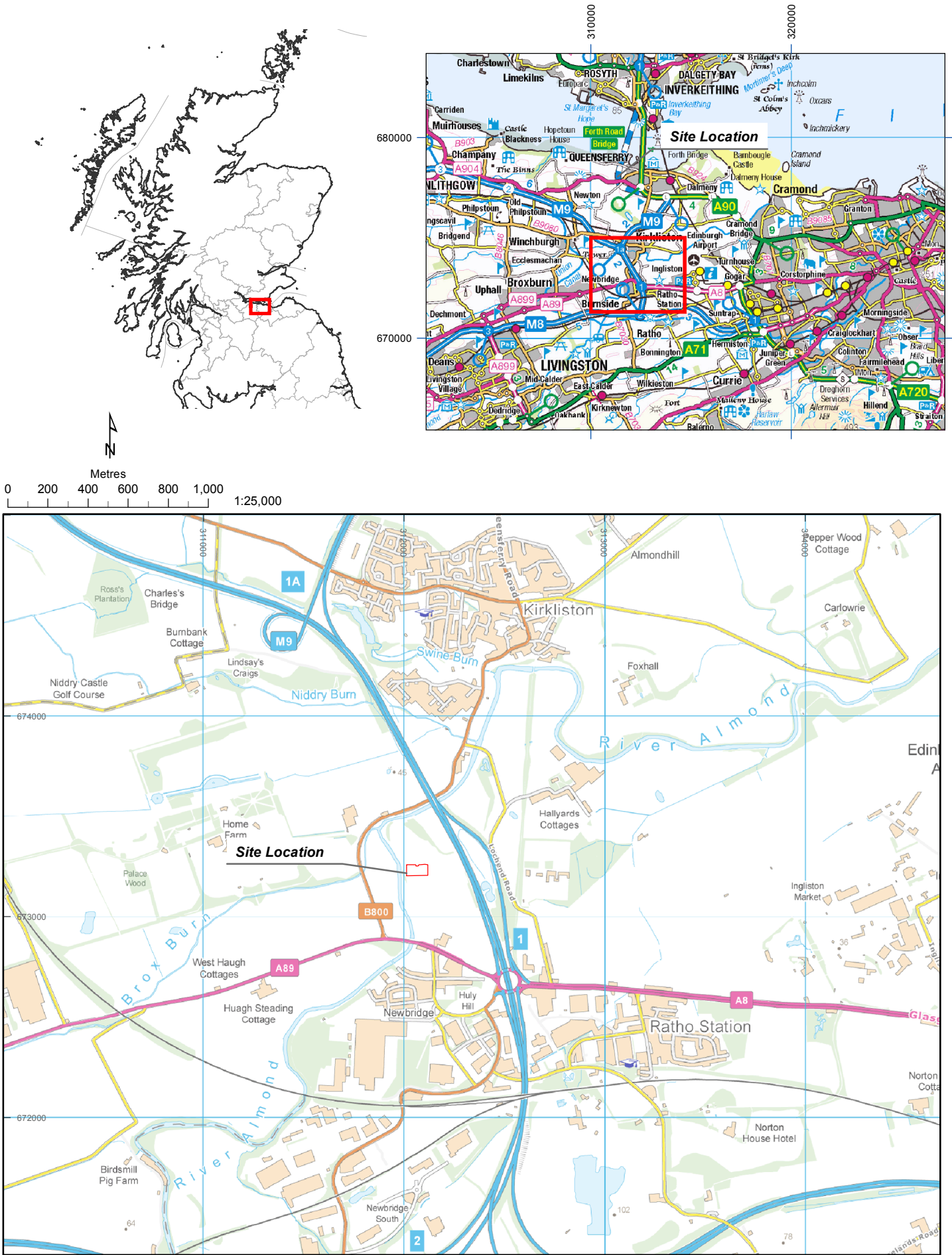


Figure 1: Site location

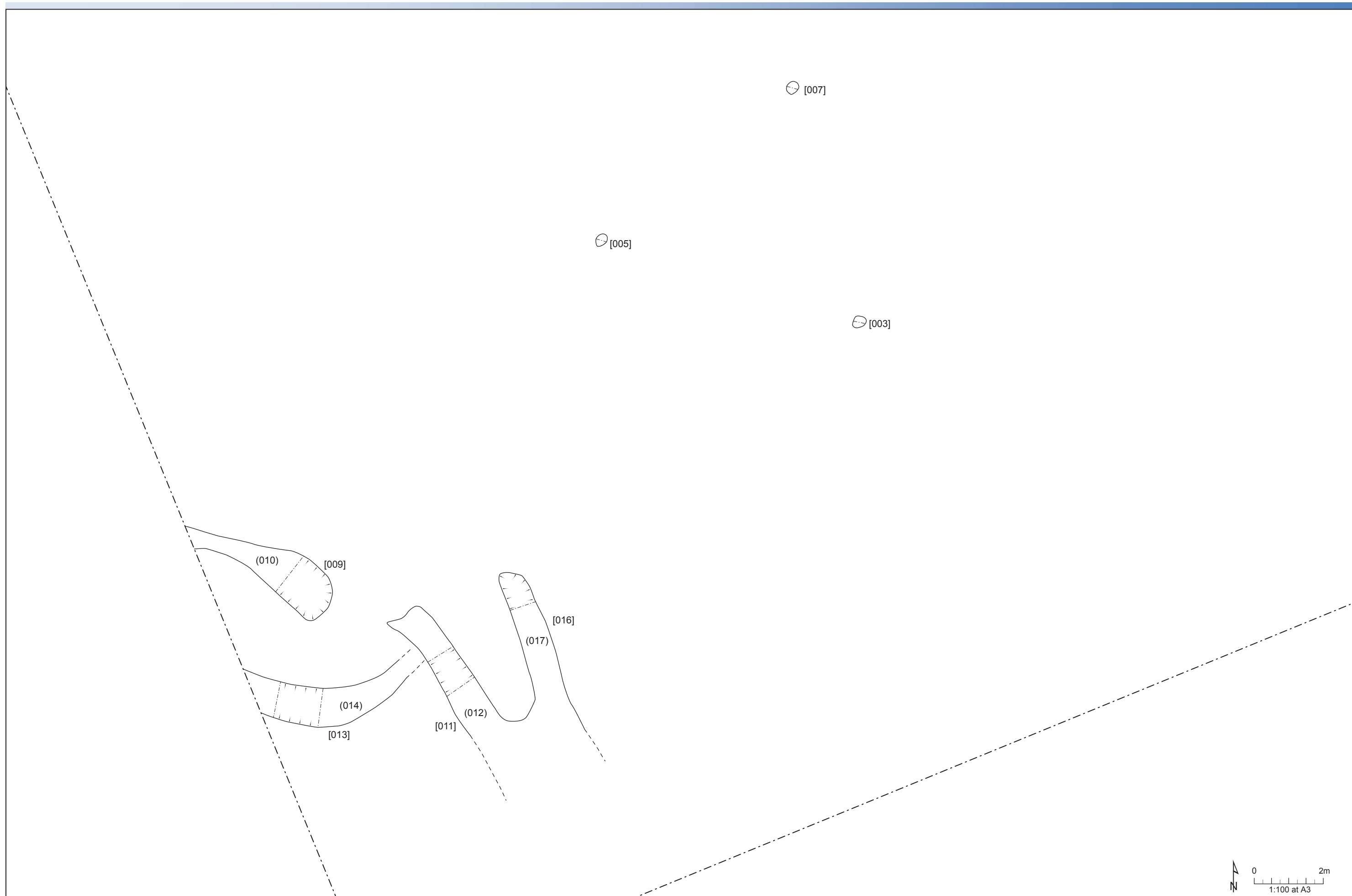


Figure 2: Plan of features

APPENDIX 1: PHOTOGRAPHIC REGISTER

Colour Digital

No.	Area	Description	Taken From
1-2	Plot 9	Initial cleaning of site after at SW extent showing linears	N
3-4	Plot 9	Images showing site after having been stripped unsupervised	W
5-6	Plot 9	Working shots of AOC staff hand cleaning site	W
7-23	Plot 9	Progress shots of site cleaning	Various
24-25	Plot 9	S Facing section of pit [003]	S
26-27	Plot 9	S Facing section of pit [005]	S
28-29	Plot 9	S Facing section of pit [007]	S
30-31	Plot 9	N Facing section of linear [016]	N
32-35	Plot 9	NW facing section of linear [011]	NW
36-37	Plot 9	NW Facing section of linear [013]	NW
38-39	Plot 9	SE Facing section of linear [013]	SE
40-46	Plot 9	General views showing PX of linears	S

APPENDIX 2: CONTEXT REGISTER

Context	Description
(001)	Mid brown sandy Loam. Small angular sized inclusions throughout and roots. Topsoil
(002)	Light brown /orange silty clay with occasional sandy/gravel patches. Subsoil
[003]	Very truncated circular shaped pit with gently sloping sides onto a flat base. Measuring 0.30 m wide by 0.28 m long by 0.05 m deep. Pit
(004)	Very compacted mid grey clay with dark flecks throughout but no inclusions. Fill of [003]
[005]	Truncated circular shaped pit with gently sloping sides onto a flat base. Measuring 0.33m wide by 0.29 m long by 0.10 m deep. Pit
(006)	Very compacted grey clay, no inclusions. Fill of [005]
[007]	Very truncated circular shaped pit with gently sloping sides onto a flat base. Measuring 0.24 m wide by 0.22 m long by 0.07 m deep. Pit
(008)	Dark grey/brown compacted grey clay with infrequent industrial flecks throughout. Fill of [007]
[009]	Truncated linear with gently sloping sides onto a wide u-shaped base. Measuring 0.60 m wide by 0.09 m deep. Linear
(010)	Filled with a Mid grey/dark brown compacted clay with a number of sub rounded inclusions throughout, poorly sorted. Fill of linear [009]
[011]	Partially truncated linear with straight almost vertical sides onto a flat base. Measuring 1.20 m wide by 0.35 m deep. Linear
(012)	Compacted mid grey clay with no inclusions measuring 0.05 m in depth.

	Upper fill of linear [011]
[013]	Truncated linear with gently sloping sides ranging between 0.72m to 0.82 m in width and 0.04m to 0.06 m in depth. Comes down onto a flat base. Linear
(014)	Very compacted mid grey clay with infrequent industrial coal flecks throughout. Fill of linear [013]
(015)	Mid brown sandy silt with infrequent small sub angular stones throughout, poorly sorted. Measures 0.30 m in depth. Lower fill of linear [011]
[016]	Truncated linear with a vertical edge at the East end onto a flat base this begins to gently rise at the West side. Feeds into linear [011]. Measures 0.35 m wide by 0.07 m deep. Linear
(017)	Compacted mid grey clay with no inclusions measuring 0.05 m in depth. Upper fill of linear [016]

APPENDIX 3: DRAWING REGISTER

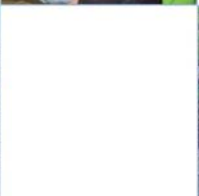
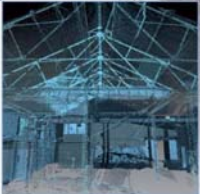
No.	Context	Description	Scale
1	N/A	Plan of features on site	1:50
2	[005]	S Facing section of pit [005]	1:10
3	[003]	S Facing section of pit [003]	1:10
4	[007]	S Facing section of pit [007]	1:10
5	[009]	W Facing section of linear [009] Slot 1A	1:10
6	[011]	SW Facing section of linear [011] Slot 3A	1:10
7	[011]	N Facing section of linear [011] Slot 3B	1:10
8	[013]	NW Facing section of linear [013] Slot 2A	1:10
9	[013]	SW Facing section of linear [013] Slot 2B	1:10

APPENDIX 4: SAMPLE REGISTER

Context	Area	Quantity (Litres)	Notes
(004)	Plot 9	5L	Pit
(006)	Plot 9	5L	Pit
(008)	Plot 9	5L	Pit
(010)	Plot 9	10L	Linear
(012)	Plot 9	20L	Linear
(014)	Plot 9	10L	Linear
(015)	Plot 9	10L	Linear

APPENDIX 5: DISCOVERY AND EXCAVATION IN SCOTLAND (DES) REPORT

LOCAL AUTHORITY:	Edinburgh
PROJECT TITLE/SITE NAME:	Plot 9, Newbridge
PROJECT CODE:	23517
PARISH:	Newbridge
NAME OF CONTRIBUTOR:	Stuart Wilson
NAME OF ORGANISATION:	AOC Archaeology Group
TYPE(S) OF PROJECT:	Archaeological Monitored Topsoil Strip & Excavation
NMRS NO(S):	N/A
SITE/MONUMENT TYPE(S):	Field boundaries & pits
SIGNIFICANT FINDS:	None
NGR (2 letters, 6 figures)	NT 12054 73248
START DATE (this season)	1 st July 2016
END DATE (this season)	11 th July 2016
PREVIOUS WORK (incl. DES ref.)	AOC 2007; Engl & Dunbar, AOC 2014 Duffy & Johnstone
MAIN (NARRATIVE) DESCRIPTION: (May include information from other fields)	<p>AOC Archaeology Group was commissioned by GM Mackenzie Ltd to undertake an archaeological monitored top-soil strip and subsequent excavation on Plot 9, a parcel of derelict land associated with a large scale commercial development at Newbridge, Edinburgh (NGR NT 12054 73248).</p> <p>The archaeological works sought to ascertain the extent and nature of any archaeological remains within the area. However, the site was top-soil stripped without adequate archaeological supervision. After consultation with Mr John Lawson (CECAS) it was decided to clean the site by a combined programme of machine and hand cleaning.</p> <p>The top-soil strip revealed a small number of sterile pits as well as a cluster of linear ditch features located at the south-western most corner of the Plot. All of the features found had been truncated due to the prior topsoil stripping.</p> <p>It is likely that these features represent a northerly extension of the medieval field system recorded by AOC Archaeology during 2007 and 2014.</p>
PROPOSED FUTURE WORK:	None
CAPTION(S) FOR ILLUSTRS:	N/A
SPONSOR OR FUNDING BODY:	GM Mackenzie Ltd
ADDRESS OF MAIN CONTRIBUTOR:	AOC Archaeology Group; Edgefield Road Industrial Estate; Loanhead, Midlothian, EH20 9SY
EMAIL ADDRESS:	Stuart.wilson@aocarchaeology.com
ARCHIVE LOCATION	Archive to be deposited in NMRS



AOC Archaeology Group, Edgefield Industrial Estate, Edgefield Road, Loanhead EH20 9SY
tel: 0131 440 3593 | fax: 0131 440 3422 | e-mail: edinburgh@aocarchaeology.com

www.aocarchaeology.com