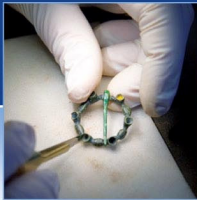


Land at Dolphingstone Farm, Prestonpans, East Lothian: Archaeological Works Data Structure Report

AOCarcha1-265109
AOC Project 23520
26th September 2016
Plan Ref 15/00473/PPM



Land at Dolphingstone Farm, Prestonpans, East Lothian Archaeological Works Data Structure Report

On Behalf of:	CgMs Consulting, Part of the RPS Group plc <i>Planning, Archaeology & Historic Buildings Consultants</i> Ocean Point One, 4 th Floor, 94 Ocean Drive, Edinburgh. EH6 6JH
National Grid Reference (NGR):	centred on NT37807 73172
AOC Project No:	23520
Prepared by:	Rob Engl
Illustration by:	Diana Sproat
Date of Fieldwork:	5th – 21st September 2016
Date of Report:	26th September 2016

This document has been prepared in accordance with AOC standard operating procedures.

Author: Rob Engl

Date: 26th September 2016

Approved by: Lindsay Dunbar

Date: 26th September 2016

Draft/Final Report Stage: Draft

Date: 26th September 2016

Enquiries to: AOC Archaeology Group
Edgefield Industrial Estate
Edgefield Road
Loanhead
EH20 9SY

Tel. 0131 440 3593
Fax. 0131 440 3422
e-mail. admin@aocarchaeology.com



Contents

	Page
List of illustrations	3
List of plates	3
List of appendices	3
Abstract.....	4
1 INTRODUCTION.....	5
1.1 Background.....	5
1.2 Location	6
1.3 Archaeological Background (Based on CgMs DBA Report)	6
2 OBJECTIVES	6
3 METHODOLOGY.....	7
4 RESULTS	7
5 Environmental Assessment (By Jackaline Robertson)	12
6 CONCLUSION AND RECOMMENDATIONS	13
7 BIBLIOGRAPHY.....	14
APPENDIX 1: Trench Descriptions	16
APPENDIX 2: Context Descriptions.....	28
APPENDIX 3: Photographic Record	29
APPENDIX 4: Drawing Register	32
APPENDIX 5: Small Finds Register (Metal Detecting Survey).....	32
APPENDIX 6: Sample Register.....	34
APPENDIX 7: ‘Discovery and Excavation in Scotland’ Report.....	35

List of illustrations

Figure 1	Site Location
Figure 2	Trench Location Plan
Figure 3	Metal Detecting Survey Finds Location Plan
Figure 4	Plan of Trench 16
Figure 5	Plan of Trench 18
Figure 6	Plan of Trench 20
Figure 7	Plan of Trench 3
Figure 8	Sections of Features

List of plates

Plate 1	Trench 29 Post excavation with ceramic field drain
Plate 2	Trench 42 post excavation
Plate 3	Structure [1606] from north-west
Plate 4	Structure [1606] from east
Plate 5	South-east facing section of [1602]
Plate 6	North-east facing section of [1604]
Plate 7	Post excavation shot Ditch [1802] from west
Plate 8	West facing section Ditch [1802]
Plate 9	Linear Ditch [302]
Plate 10	South-west facing section Ditch [302]
Plate 11	West facing section through Ditch [2002]
Plate 12	Ditch [2002] post-excavation

List of appendices

Appendix 1	Trench Descriptions
Appendix 2	Context Register
Appendix 3	Photographic Record
Appendix 4	Drawing Register
Appendix 5	Metal Detecting Small Finds Register
Appendix 6	Sample Register
Appendix 7	<i>'Discovery and Excavation in Scotland'</i> Report

Abstract

This report presents the results of an archaeological evaluation and archaeological metal detecting survey undertaken in respect to a proposed development at Dolphingstone Farm, Prestonpans, East Lothian (centred on NGR: NT 37807 73172).

The site lies within the eastern limit of the Inventory Boundary of the Battle of Pinkie 1547. The metal detecting survey was therefore undertaken in order to recover remains associated with the battle. The survey recovered a total of 84 metal finds. These included coins of 17th and 19th century date, modern moulded and machine tooled objects and a quantity of lead scrap. No objects could be definitively associated with the 'English Camp'.

The evaluation was undertaken within a single land parcel of 6 ha. An 8% (3000 linear metres) sample of the evaluation area was investigated by trial trenching. The scope of the works was agreed in a WSI approved by Mr Andrew Robertson of East Lothian Archaeological Service (ELCAS).

The archaeological evaluation sought to target the crop-marks of a number of features (HER MEL2552) recorded within the site area. The evaluation successfully revealed a trapezoidal enclosure and the partial survival of a possible barrow, both of these features are of probable prehistoric date. A small field boundary ditch of possible post medieval date and the faint remains of post medieval rig and furrow agriculture were also recorded. The site area was surrounded by several former 19th century pit heads. A large rectangular pit thought to be associated with mining activity was also recorded. Disturbed sub-soil was in evidence along the northern and western site boundaries. This contained coal and quantities of 19th century ceramics. The disturbance is again most probably associated with mining activity. The evaluation also revealed that the entire site area had undergone significant truncation due to heavy ploughing.

No archaeologically significant small finds were recovered during the evaluation.

1 INTRODUCTION

1.1 Background

- 1.1.1 A programme of archaeological works was undertaken by AOC Archaeology on a land parcel at Dolphinstone Farm, Prestonpans, East Lothian. The works were commissioned by CgMs Consulting for Rick Finc Associates on behalf of Hallam Land Management Ltd. The works were undertaken as a planning condition (15/00473/PPM) associated with the proposed development of the site involving residential, commercial and retail units and a cemetery with associated open space and infrastructure.
- 1.1.2 The site lies within the administrative area of East Lothian Council, which is advised on archaeological matters by Mr Andrew Robertson of the East Lothian Council Archaeology Service (ELCAS). The archaeological works were conducted in accordance with the principles as set out in *Scottish Planning Policy (2014)* and *Planning and Archaeology 2/2011 (2011)* and consisted of a comprehensive metal detecting survey and an archaeological evaluation by trial trenching. The works were undertaken in response to a Planning Condition (15/00473/PPM) produced by the Council and in accordance with a Written Scheme of Investigation (WSI) produced by CgMs (2016) and agreed with Mr Robertson.
- 1.1.2 The proposed development area (centred on NGR: NT37807 73172; Figure 1) measures 6 ha in total. The topography of the site consists of a single gently undulating fallow field.
- 1.1.3 The site lies within the eastern limit of the Inventory Boundary of the Battle of Pinkie 1547. The metal detecting survey was therefore undertaken in order to recover remains associated with the battle. The survey recovered a total of 84 metal finds. These included coins of 17th and 19th century date, modern moulded and machine tooled objects and a quantity of lead scrap. No objects could be definitively associated with the 'English Camp'.
- 1.1.4 The archaeological evaluation sought to target the crop-marks of a number of features (HER MEL2552) recorded within the site area. The evaluation successfully revealed a trapezoidal enclosure and the partial survival of a possible barrow, both of these features are of probable prehistoric date. A small field boundary ditch of unknown date and the faint remains of post medieval rig and furrow agriculture were also recorded. The site area was surrounded by several former 19th century pit heads. A large rectangular pit thought to be associated with mining activity was also recorded. Disturbed sub-soil was in evidence along the northern and western site boundaries. This contained coal and quantities of 19th century ceramics. The disturbance is again most probably associated with mining activity. The evaluation also revealed that the entire site area had undergone significant truncation due to heavy ploughing.
- 1.1.4 No archaeologically significant small finds were recovered during the evaluation.

1.2 Location

1.2.1 The site lies to the immediate south of the B1361 between Wallyford and Prestonpans (Figure 1, centred on NS 419 642). The site is bounded by railway embankments to the south, by a farm track to the east and by mature woodland to the west.

1.3 Archaeological Background (Based on CgMs DBA Report)

1.3.1 The proposed development area lies within the Inventory Boundary of the Battle of Pinkie 1547, near to its eastern limit.

1.3.2 There is no indication that any action related to the battle took place within the site area.. The battle is thought to have taken place well to the west, although clashes occurred on Falside Hill. Nor is there any concrete indication that associated remains may be present within the site; the English camp which contemporary sources indicate was entrenched is generally thought to have been located further to the north near the coast. There is likely therefore to be limited potential for battlefield archaeology to be present within the site.

1.3.3 Crop-marks of a number of features (HER MEL2552) have been recorded within the site (Fig. 2). These comprise a circular feature identified as the possible ploughed out remains of a barrow. A trapezoidal enclosure is also present, which may represent settlement or burial evidence. Other crop-marks include fragments of rig and furrow cultivation and several undiagnostic features.

1.3.4 No previous archaeological fieldwork has been undertaken within the site. However, crop-marks of a circular enclosure were recorded immediately to the east of the site in 1995 (Fig. 2). These were investigated by a programme of archaeological work and found to represent an enclosed settlement with the remains of roundhouse features, paved areas and a substantial ditch containing waterlogged deposits. Artefactual evidence indicated that the enclosure dated to the early to mid first millennium AD, though a radiocarbon assay yielded a date from the early 1st millennium BC, possibly indicating a period of earlier use. There is no indication that the enclosure extended into the proposed development area and the part of the site closest to it appears to have been heavily disturbed by previous works.

2 OBJECTIVES

2.1 The objectives of the archaeological evaluation and metal detecting survey were:

- i) to determine the presence or absence of any buried archaeological remains that could be subject to disturbance during the proposed development;

- ii) to determine the nature, extent and significance of any remains present in order to inform an appropriate mitigation strategy (likely to be preservation by record, ie.. excavation, analysis and dissemination of results).

3 METHODOLOGY

- 3.1 The details of the metal detecting survey and archaeological evaluation, laid out below, were designed to meet the requirements of East Lothian Council as advised by Mr Andrew Robertson, and agreed through the submission of a Written Scheme of Investigation (WSI) (CgMs 2016).
- 3.2 Only the main body of the site was subject to the metal detecting survey. The embankment and land outside the embankment was excluded from the survey due heavy tree and plant cover. The vegetation of the main area had been previously reduced to ground level.
 - 3.2.1 The metal detecting survey was undertaken in two metre wide transects allowing for a degree of overlap and ensuring all ground was covered.
 - 3.2.2 The spoil and base of each evaluation trench was also to be detected.
- 3.2 The proposed development area covers c.6ha. A 10% sample of the area amounted to 3000 linear metres of trenches excavated with a 2.0 m wide bucket.
- 3.3 The evaluation trenches were largely distributed as per an indicative trenching plan included in the WSI. Trench 1 was moved in order to more fully reveal the pit within Trench 20 and to more fully test the survival of features within Trench 18.
- 3.4 Trenches were opened by a single tracked excavator equipped with 2.0 m wide bladed ditching bucket. Excavation was undertaken in units/spits until the first significant archaeological horizon or geological deposits were reached. All machine excavation was supervised by an experienced field archaeologist and undertaken according to AOC Archaeology Group's standard operating procedures, and the methodology within the agreed WSI (CgMs 2016). A site meeting was held with Mr Andrew Robertson of East Lothian Council and CgMs at a suitable point during the evaluation to discuss the results and agree any further work needed to achieve the aims of the evaluation. The meeting agreed the level of hand excavation required to satisfactorily test exposed features and the locations of several additional trenches to be excavated around exposed features. Any features excavated were covered with terram before the trenches were backfilled.

4 RESULTS

4.1 Metal Detecting Survey

- 4.1.1 The metal detecting survey was undertaken on the 5th-8th September 2016. Overall weather conditions were dry and clear. The survey targeted the main body of the proposed development area as this had been cleared to ground level. The surrounding embankment was excluded from the survey due to excessive vegetation and tree cover
- 4.1.2 The survey was undertaken using a variety of detectors including a Garrett Ace 250, a Whites M1 and a Minelab x-terra 750. A smaller Whites bullseye pinpoint detector was used for detailed location. The site area was walked in two metre wide transects allowing for a degree of overlap and ensuring all ground was covered.
- 4.1.3 All artefacts were marked, recovered, bagged and then surveyed with a GPS unit.
- 4.1.4 A total of 84 metal objects were recovered during the survey (Appendix 5). The majority of the artefacts appeared to date to the 19th century. Three coins of probable 17th century date were recovered alongside Victorian and Georgian pennies. Numerous scraps of lead were recovered from across the site together with brass cartridge caps, buckles and hoops. The artefacts appeared to be distributed in linear 'drifts' across the site. This is possibly to do with episodes of dumping and the subsequent movement of the artefacts through the plough soil.
- 4.1.4.1 No artefacts could be directly related to the 'English Camp' associated with the battle of Pinkie 1547.
- 4.1.4.2 Numerous large pieces of obvious farm machinery and tin cans were also identified. These were removed from site and disposed of.
- 4.1.5 The archaeological evaluation was undertaken on the 12th-21st September 2016. Overall weather conditions were dry and visibility was good.
- 4.2 A total of 59 linear trenches were excavated (Figure 2) giving a total of 3000 linear metres.
- 4.3 The site consisted of a single large fallow field. The field was fairly level with a gentle rise within the northern and central part of the field. The top-soil consisted of a heavily improved dark grey/ brown plough-soil (01) with numerous shards of 19th century white ceramic, bottle glass and stoneware. The plough-soil ranged from 0.35 m to 0.60 m in depth. This occasionally overlay an older paler plough-soil (03) which ranged from 0.10 m to 0.20 m in depth. A deposit of colluvial silt was removed from the trenches situated within the north-east corner of the site. This deposit ranged from 0.20 m to 0.55 m in depth. The upper deposits overlaid geological glacial drift deposits of sands and gravels.
- 4.3.1 The sub-soil had been heavily truncated by modern farming practices with numerous plough scars. This disturbance was most evident on the higher areas of the site. Bioturbation from animal burrows and tree roots was also observed.



Plate 1: Trench 29 Post excavation with ceramic field drain



Plate 2: Trench 42 post excavation

4.3.2 The sub-soil had also been heavily disturbed by probable mining activity along the sites northern and western boundaries. Here quantities of coal and sherds of white ceramic were in evidence.

4.4 Archaeological remains associated with the known crop-marks were recorded on a low rise within the northern part of the site. These remains consisted of beam slots associated with a rectangular structure of possible prehistoric or early historic date and a curvilinear ditch associated with the remains of a possible prehistoric barrow. These remains were recorded and sampled. A truncated field boundary of probable post medieval date was also recorded together with a large pit feature associated with mining works.

4.5 Following the evaluation an environmental assessment was undertaken on the recovered archaeological samples after consultation with CgMs (Section 5) to further clarify the nature of the recorded features.

4.6 Rectangular Crop-mark Structure, [1605], Trench 16

4.6.1 The excavation of Trench 16 revealed two conjoined Linear Ditch Features [1602 & 1604] crossing the trench and aligned north-west to south-east [1602] and north-east to south-west. These features correspond with the position of a rectangular crop-mark as illustrated in the CgMs WSI (2016). The Beam Slot [1602] represents an external wall of the structure. A slot excavated through the feature revealed abruptly sloping sides angled on to a flat base. The feature was visible for four metres conjoining with Beam Slot [1604] to the south-east. The ditch was 0.40 m wide with a depth of 0.25 m. The Beam Slot [1604] appeared more ephemeral and appears to be an inner partition wall represented on the crop-mark (Fig. 2). This feature was 0.55 m wide with a maximum depth of 0.10 m. The ditch had a broad 'U'-shaped profile. Both of the features were filled with a deposit of medium brown silty sand.

4.6.2 The features recorded in Trench 16 appear to correspond with the rectangular crop-mark structure as illustrated within the CgMs WSI (2016). Based on form it is likely that the crop-mark is a wooden post-built structure of prehistoric or early historic date.



Plate 3: Structure [1606] from north-west



Plate 4: Structure [1606] from east



Plate 5: South-east facing section of [1602]



Plate 6: North-east facing section of [1604]

4.7 Circular 'Barrow' Structure [1802], Trench 18

4.7.1 A slightly Curvilinear Ditch Feature [1802] was recorded within the northern part of Trench 18. This position matched the crop-mark location of the possible prehistoric 'barrow' feature as illustrated in the CgMs WSI (2016). The ditch was orientated across the trench east to west curving slightly at the western end. The ditch was 1.30 m wide with a maximum depth of 0.17 m. The feature had a flat base with a steeply sloping northern edge and a more gradually sloping southern edge. This was also observed within the west facing section. The ditch was filled by a deposit of medium grey-brown sandy silt. This deposit contained very occasional small stones and fragments of charcoal.

4.7.2 The feature had been obviously affected by bioturbation and ploughing especially along the western edge. No apparent return of the ditch or internal features was recognised. Trench 1 was also targeted on the crop-mark; this again failed to find any further evidence of the structure.



Plate 7: Post excavation shot Ditch [1802] from west



Plate 8: West facing section Ditch [1802]

4.8 Linear Field Boundary [302 & 502]. Trenches 3 & 5

- 4.8.1 A single truncated Linear Ditch Feature was recorded crossing Trenches three and five. The ditch was aligned north-east to south-west. The feature was 0.40 m wide with gently sloping sides and a rounded base. The ditch had been heavily truncated with a depth of only 0.07 m. The feature was filled with a sterile deposit of compact grey-brown sandy silt. The feature is most likely to be a field boundary of post-medieval date.



Plate 9: Linear Ditch [302]



Plate 10: South-west facing section Ditch [302]

4.9 Pit Feature [2002]. Trench 20

- 4.9.1 A single large, rectangular pit feature was partially revealed at the northern end of Trench 20. The trench was extended to the north and east by a further ten metres in order to fully expose the feature. However the pit appeared to extend beyond the site boundary. The pit was oval in shape with steeply sloping sides and a flat base. The visible dimensions of the feature were 8.0 m south-west to north-east and 5.0 m north-west to south-east. The pit was 0.70 m in depth and filled by a sterile, mixed deposit of re-deposited top-soil and sub-soil. The pit is most probably related to 19th century mining activity.



Plate 11: West facing section through Ditch [2002]



Plate 12: Ditch [2002] post-excitation

5 ENVIRONMENTAL ASSESSMENT (By Jackaline Robertson)

5.1 Introduction

5.1.1 Three bulk samples (60 Litres) were submitted for environmental assessment from the evaluation undertaken at Dolphingstone Farm. The samples were collected from a probable barrow ditch and two linear features associated with a rectangular wooden structure of probable prehistoric/early historic date. The main objective of this assessment was to recover any ecofacts and artefacts to more fully establish the character of these features. The results are presented below.

5.2 Methodology

5.2.1 The samples were processed in laboratory conditions using a floatation method designed to retrieve both environmental and artefactual finds (cf. Kenward *et al.* 1980). The samples were composed of a sandy silt which did not require any pre-treatment.

5.3 Results

5.3.1 The results are presented below in Table 1.

The finds recovered from the three bulk sample were glass, slag, burnt bone, charcoal and coal. The glass and slag are both smaller than 10mm and are probably intrusive. The burnt bone and charcoal fragments are also smaller than 10mm and none could be identified to species. Coal was noted in large quantities in all three samples but this material was of little archaeological interest.

5.3.6 Table of Results

Feature	Context	Area	Sample Vol (l)	% Sorted	Glass (g)	Bone (g)	In (g)	Charcoal (g)	Coal/
1602	1603	T16	20	100				* <4mm	P
1606	1605	T16	20	100	* (N/A)	*(N/A)			P
1802	1803	T18	20	100		*(0.4g)	*(0.3g)		P

Key: *=<10, **=10-29, ***=30-100, ****=>100, P=present weight given in grams in (g)

5.4 Recommendations

Given the small number of finds recovered from these three samples and their poor condition no further work is recommended. None of the ecofacts are suitable for providing a reliable radiocarbon date.

6 CONCLUSION AND RECOMMENDATIONS

- 6.1 The proposed development site was subject to an archaeological evaluation as per the agreed WSI (CgMs 2016) and on-site discussions with Mr Andrew Robertson of ELCAS. The evaluation revealed the survival of the rectangular crop-mark and the partial survival of the circular 'barrow' feature. Both of these features had undergone significant truncation through modern farming practices. The former feature would appear to be the remains of a prehistoric or possible early historic 'timber hall' structure, with excavation revealing probable structural beam slots. The 'barrow' feature consisted of the remains of a curvilinear ditch aligned east to west. Unfortunately no return was identified and it appears that modern ploughing has removed the majority of the monument.
- 6.1.1 The large oval pit partially exposed within Trench 20 would appear to be related to mining activity. Large areas of disturbed sub-soil containing coal and white ceramics were observed in the trenches bordering the northern and western boundaries.
- 6.1.2 A narrow and ephemeral former field boundary was recorded within Trenches three and five aligned NE/SW. The feature was filled with a sterile deposit of sandy silt. It is probable that the boundary represents post-medieval activity. Elsewhere the site was archaeologically sterile.
- 6.2 Given the findings of the evaluation it is likely that further mitigation measures will be required should the proposed development proceed. The scope of these mitigation measures are set out in the relevant chapter of the agreed WSI (CgMs 2016).

7 BIBLIOGRAPHY

CgMs Consulting 2016 *Land at Dolphingstone Farm, Prestonpans, East Lothian: Written Scheme of Investigation* Unpublished client report.

CgMs Consulting 2016: *Land at Dolphingstone Farm, Prestonpans, East Lothian: Archaeology & Cultural Heritage Baseline Assessment* Unpublished client report

Kenward, H. K., Hall, A. R. and Jones, A. K. G. (1980). A tested set of techniques for the extraction of plant and animal macrofossils from waterlogged archaeological deposits. *Science and Archaeology* **22**, 3-15.

Scottish Planning Policy SPP23. Archaeology and Planning. Scottish Government April 2014.

Scottish Government 2011 *Planning and Archaeology 2/2011*

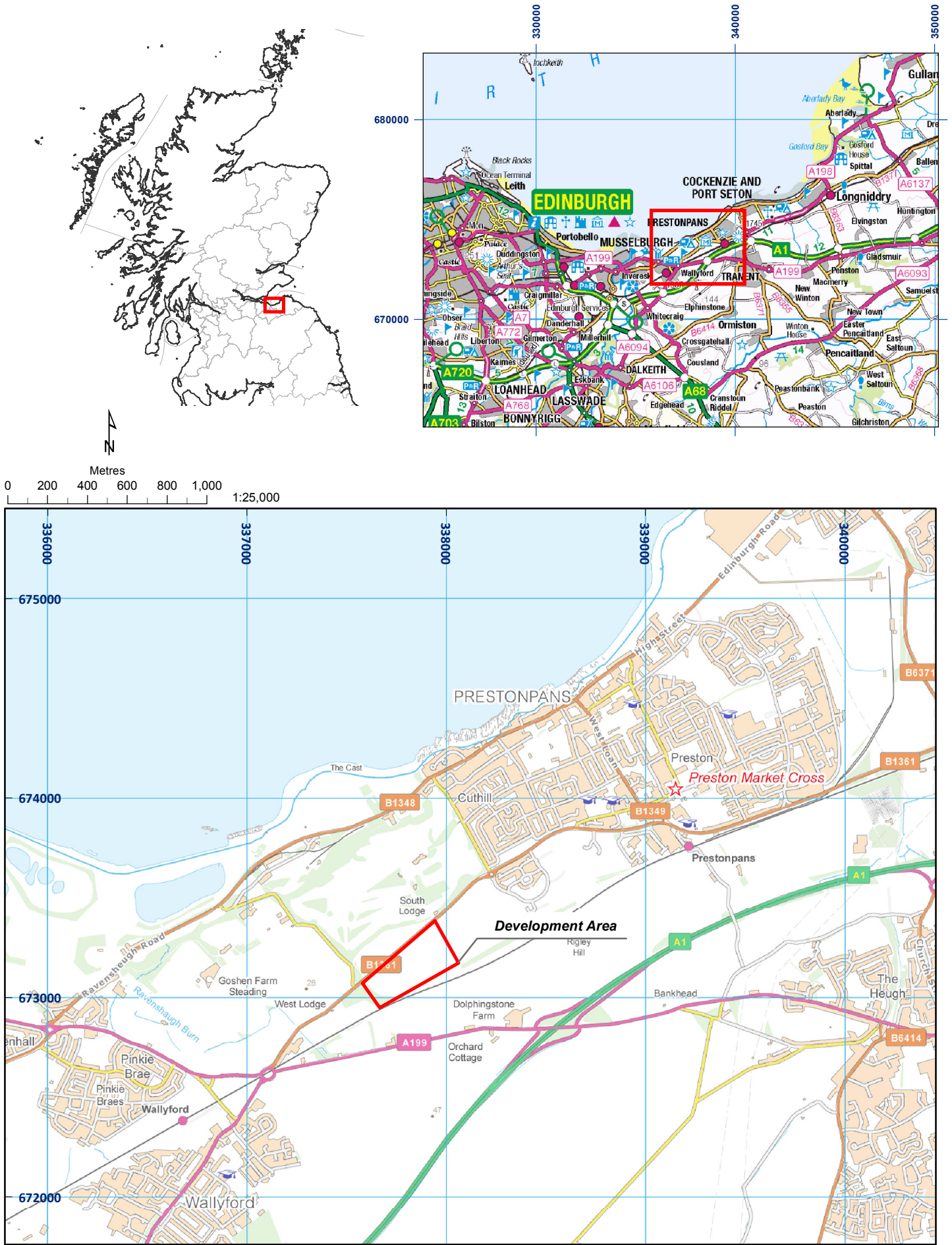


Figure 1: Site location plan

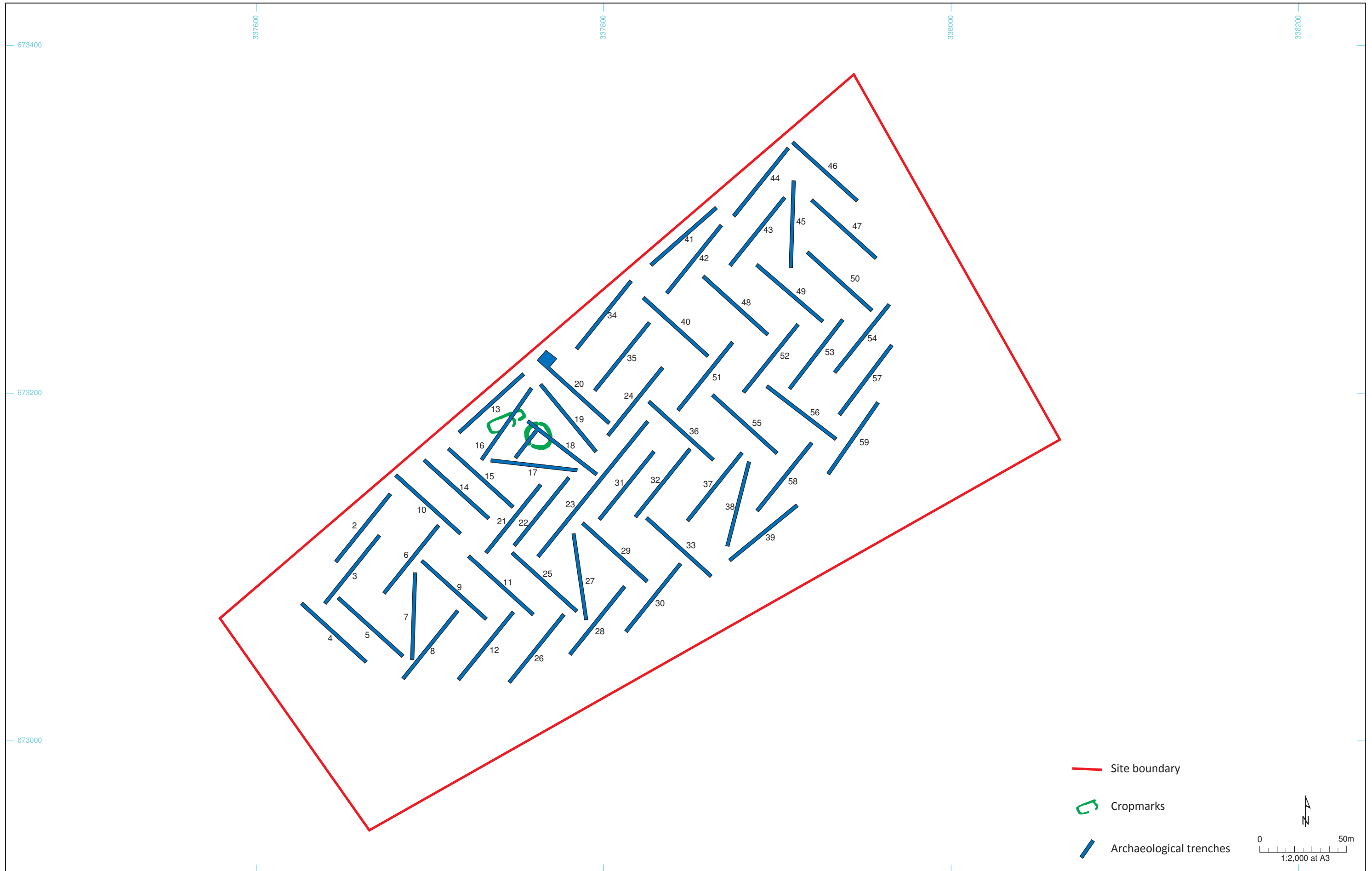


Figure 2: Trench Location plan

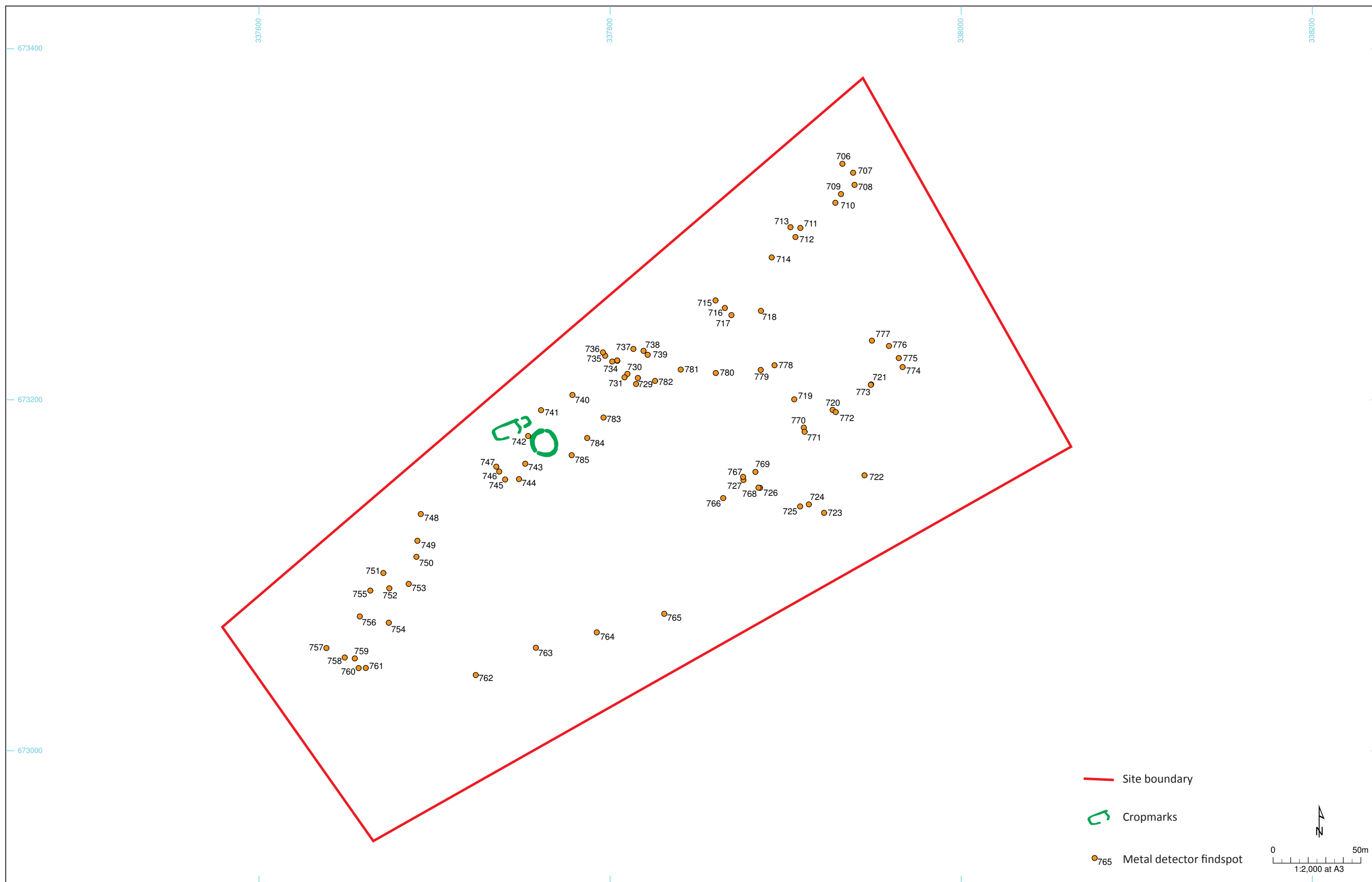


Figure 3: Metal detecting survey finds location plan

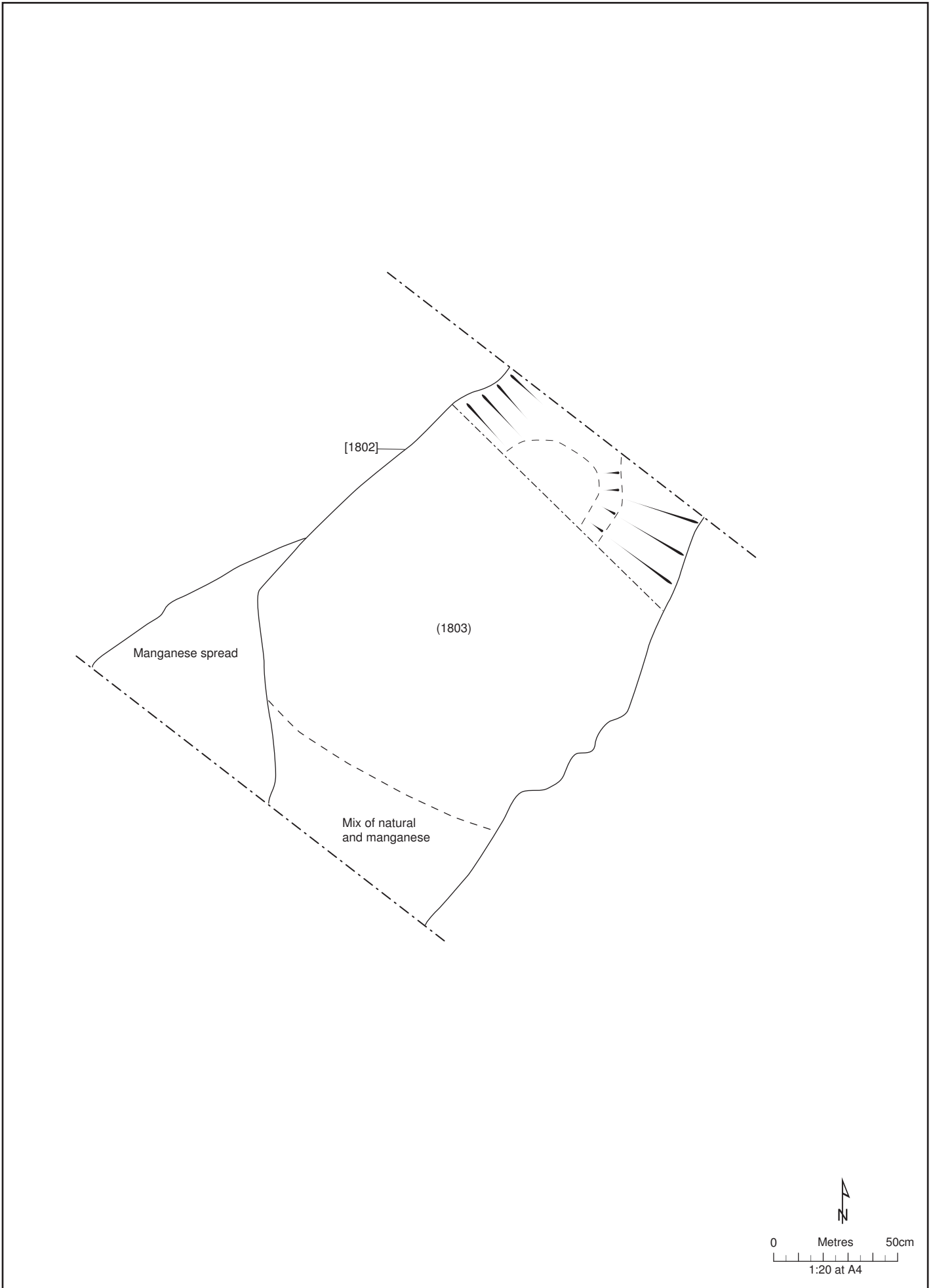


Figure 5: Plan of trench 18

01/23520/REP/05/01

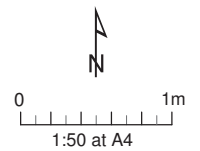
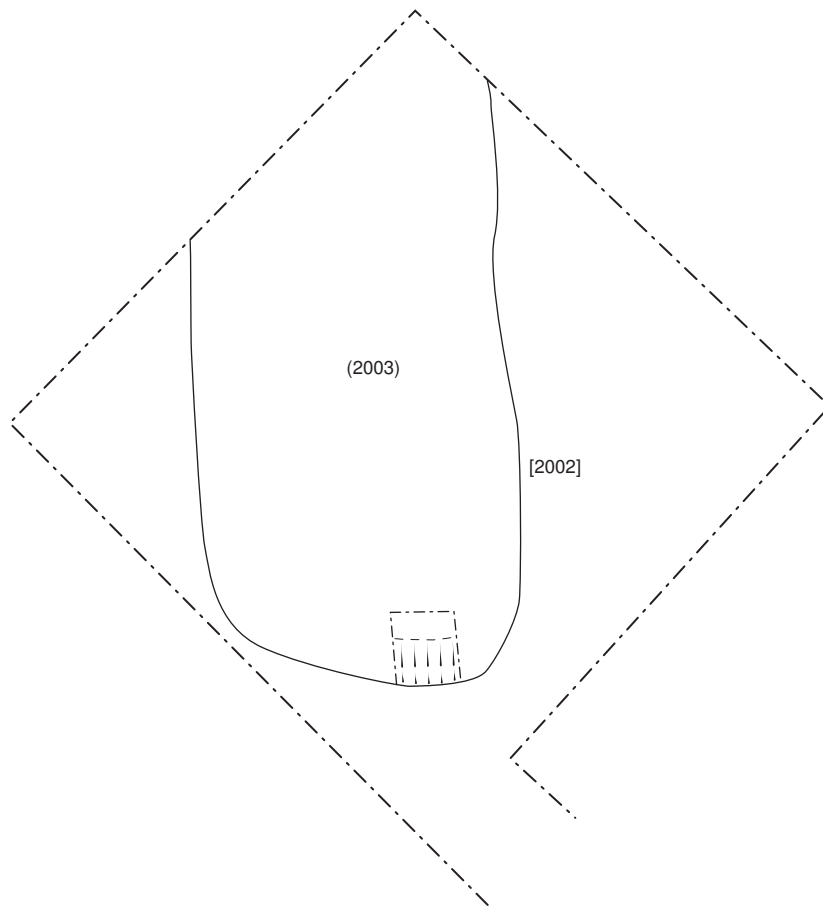


Figure 6: Plan of trench 20

01/23520/REP/06/01

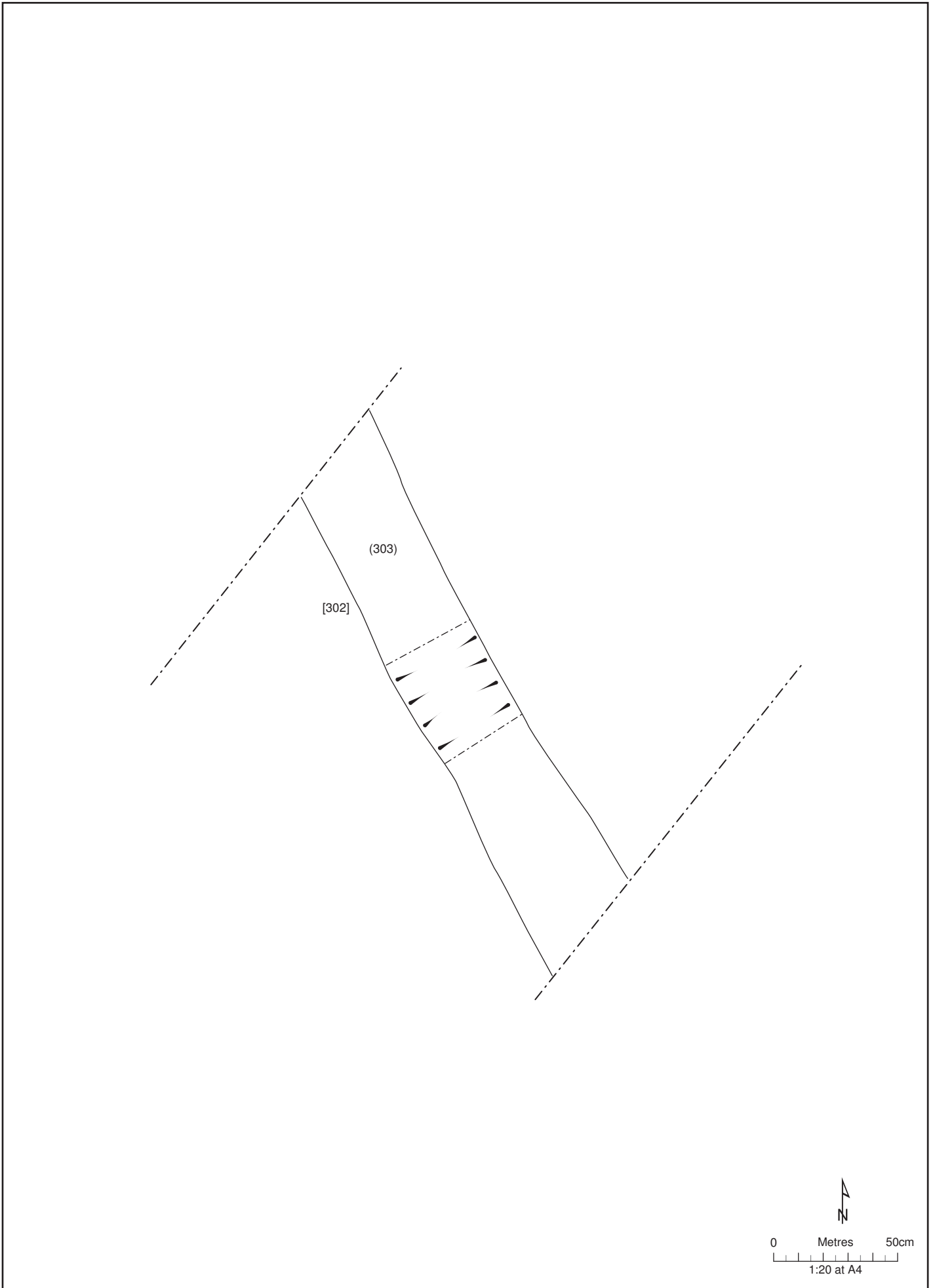


Figure 7: Plan of trench 3

01/23520/REP/07/01

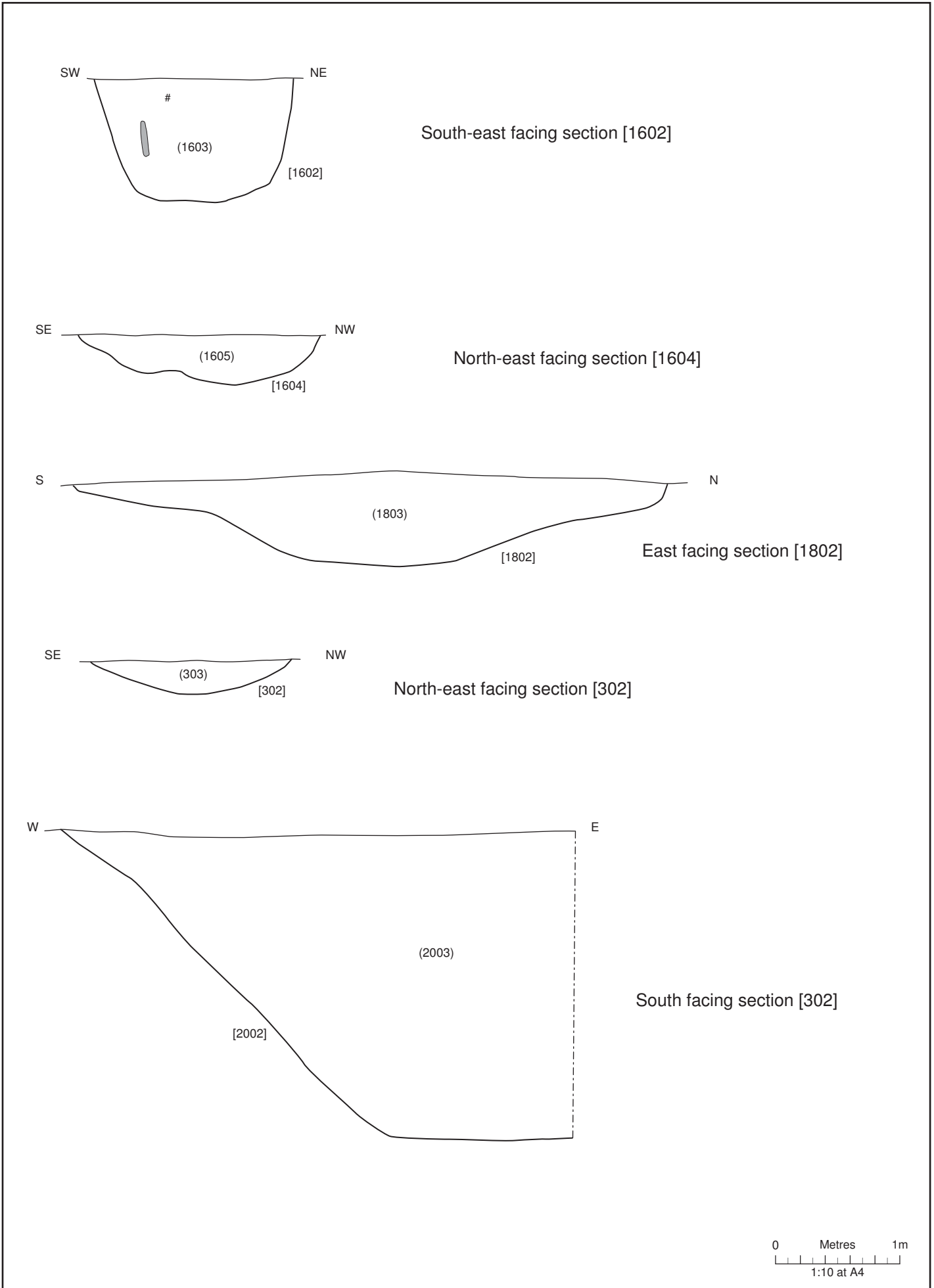


Figure 8: Sections of features

01/23520/REP/08/01

Land at Dolphingstone Farm, Prestonpans, East Lothian: Archaeological Works Data Structure Report

Section 2: Appendices

APPENDIX 1: Trench Descriptions

Trench 1

<i>Dimensions</i>	20 m by 2 m
<i>Orientation</i>	E-W
<i>Topsoil</i>	0.35 m -0.40 m
<i>Depth of Excavation</i>	0.50 m
<i>Significant Features</i>	None
<i>Other Features</i>	None
<i>Subsoil</i>	Yellow/orange sand with gravel inclusions. Numerous plough scarring
<i>Finds</i>	Occasional white ceramic material in top-soil

Trench 2

<i>Dimensions</i>	50 m by 2 m
<i>Orientation</i>	NE – SW
<i>Topsoil</i>	0.35 m
<i>Depth of Excavation</i>	0.45 m
<i>Significant Features</i>	None
<i>Other Features</i>	None
<i>Subsoil</i>	Yellow/orange sand with gravel inclusions. Numerous plough scarring
<i>Finds</i>	Occasional white ceramic material in top-soil

Trench 3

<i>Dimensions</i>	50 m by 2 m
<i>Orientation</i>	E – W
<i>Topsoil</i>	0.35 m
<i>Depth of Excavation</i>	0.45 m
<i>Significant Features</i>	Linear Ditch feature [302] at 15.0 m
<i>Other Features</i>	None
<i>Subsoil</i>	Yellow/orange sand with gravel inclusions. Numerous plough scarring
<i>Finds</i>	Occasional white ceramic material in top-soil

Trench 4

<i>Dimensions</i>	50 m by 2 m
<i>Orientation</i>	N – S
<i>Topsoil</i>	0.40 m
<i>Old Plough Soil</i>	0.25 m
<i>Depth of Excavation</i>	0.65 m
<i>Significant Features</i>	None
<i>Other Features</i>	None
<i>Subsoil</i>	Yellow/orange sand with gravel inclusions. Numerous plough scarring
<i>Finds</i>	Occasional white ceramic material in top-soil

Trench 5

<i>Dimensions</i>	50 m by 2 m
<i>Orientation</i>	N – S
<i>Topsoil</i>	0.40 m
<i>Depth of Excavation</i>	0.50 m
<i>Significant Features</i>	Linear Ditch feature [502] at 14.0 m aligned NE/SW (Same as [302])
<i>Other Features</i>	None
<i>Subsoil</i>	Yellow/orange sand with gravel inclusions. Numerous plough scarring
<i>Finds</i>	Occasional white ceramic material in top-soil

Trench 6

<i>Dimensions</i>	50 m by 2 m
<i>Orientation</i>	NE – SW
<i>Topsoil</i>	0.40 m
<i>Old Plough Soil</i>	0.0 m
<i>Depth of Excavation</i>	0.50 m

<i>Significant Features</i>	None
<i>Other Features</i>	None
<i>Subsoil</i>	Yellow/orange sand with gravel inclusions. Numerous plough scarring
<i>Finds</i>	Occasional white ceramic material in top-soil

Trench 7

<i>Dimensions</i>	50 m by 2 m
<i>Orientation</i>	N – S
<i>Topsoil</i>	0.40 m
<i>Old Plough Soil</i>	0.0 m
<i>Depth of Excavation</i>	0.50 m
<i>Significant Features</i>	None
<i>Other Features</i>	None
<i>Subsoil</i>	Yellow/orange sand with gravel inclusions. Numerous plough scarring
<i>Finds</i>	Occasional white ceramic material in top-soil

Trench 8

<i>Dimensions</i>	50 m by 2 m
<i>Orientation</i>	SW – NE
<i>Topsoil</i>	0.50 m
<i>Old Plough Soil</i>	0.0 m
<i>Depth of Excavation</i>	0.60 m
<i>Significant Features</i>	None
<i>Other Features</i>	Modern drain cut at 25 m NW/SE
<i>Subsoil</i>	Yellow/orange sand with gravel inclusions. Evidence of heavy plough scarring and coal
<i>Finds</i>	Occasional white ceramic material in top-soil

Trench 9

<i>Dimensions</i>	50 m by 2 m
<i>Orientation</i>	NW – SE
<i>Topsoil</i>	0.40 m
<i>Old Plough Soil</i>	0.0 m
<i>Depth of Excavation</i>	0.50 m
<i>Significant Features</i>	None
<i>Other Features</i>	None
<i>Subsoil</i>	Yellow/orange sand with gravel inclusions. Numerous plough scarring
<i>Finds</i>	Occasional white ceramic material in top-soil

Trench 10

<i>Dimensions</i>	50 m by 2 m
<i>Orientation</i>	N – S
<i>Topsoil</i>	0.40 m
<i>Old Plough Soil</i>	0.0 m
<i>Depth of Excavation</i>	0.50 m
<i>Significant Features</i>	None
<i>Other Features</i>	None
<i>Subsoil</i>	Yellow/orange sand with gravel inclusions. Numerous plough scarring
<i>Finds</i>	Occasional white ceramic material in top-soil

Trench 11

<i>Dimensions</i>	50 m by 2 m
<i>Orientation</i>	NNW – SSE
<i>Topsoil</i>	0.40 m
<i>Old Plough Soil</i>	0.0 m
<i>Depth of Excavation</i>	0.50 m
<i>Significant Features</i>	None
<i>Other Features</i>	None
<i>Subsoil</i>	Yellow/orange sand with gravel inclusions. Numerous plough scarring
<i>Finds</i>	Occasional white ceramic material in top-soil

Trench 12

<i>Dimensions</i>	50 m by 2 m
<i>Orientation</i>	SW – NE
<i>Topsoil</i>	0.50 m
<i>Old Plough Soil</i>	0.0 m
<i>Depth of Excavation</i>	0.60 m
<i>Significant Features</i>	None
<i>Other Features</i>	Ground disturbance from 0.0 m to 3.0 m numerous fragments of white ceramic and coal
<i>Subsoil</i>	Yellow/orange sand with gravel inclusions. Numerous plough scarring
<i>Finds</i>	Occasional white ceramic material in top-soil

Trench 13

<i>Dimensions</i>	50 m by 2 m
<i>Orientation</i>	W – E
<i>Topsoil</i>	0.40 m
<i>Old Plough Soil</i>	0.0 m
<i>Depth of Excavation</i>	0.50 m
<i>Significant Features</i>	None
<i>Other Features</i>	None
<i>Subsoil</i>	Yellow/orange sand with gravel inclusions. Numerous plough scarring
<i>Finds</i>	Occasional white ceramic material in top-soil

Trench 14

<i>Dimensions</i>	50 m by 2 m
<i>Orientation</i>	N – S
<i>Topsoil</i>	0.35 m
<i>Old Plough Soil</i>	0.0 m
<i>Depth of Excavation</i>	0.50 m
<i>Significant Features</i>	None
<i>Other Features</i>	None
<i>Subsoil</i>	Yellow/orange sand with gravel inclusions. Numerous plough scarring
<i>Finds</i>	Occasional white ceramic material in top-soil

Trench 15

<i>Dimensions</i>	50 m by 2 m
<i>Orientation</i>	N – S
<i>Topsoil</i>	0.40 m
<i>Old Plough Soil</i>	0.0 m
<i>Depth of Excavation</i>	0.50 m
<i>Significant Features</i>	None
<i>Other Features</i>	None
<i>Subsoil</i>	Yellow/orange sand with gravel inclusions. Numerous plough scarring
<i>Finds</i>	Occasional white ceramic material in top-soil

Trench 16

<i>Dimensions</i>	50 m by 2 m
<i>Orientation</i>	NE – SW
<i>Topsoil</i>	0.40 m
<i>Old Plough Soil</i>	0.50 m
<i>Depth of Excavation</i>	0.65 m
<i>Significant Features</i>	Crop-mark structure [1606] consisting of Linear Ditch Features [1602 & 1604]
<i>Other Features</i>	None
<i>Subsoil</i>	Yellow/orange sand with gravel inclusions. Numerous plough scarring & bioturbation
<i>Finds</i>	Occasional white ceramic material in top-soil

Trench 17

<i>Dimensions</i>	50 m by 2 m
-------------------	-------------

<i>Orientation</i>	SE – NW
<i>Topsoil</i>	0.40 m
<i>Old Plough Soil</i>	0.0 m
<i>Depth of Excavation</i>	0.50 m
<i>Significant Features</i>	None
<i>Other Features</i>	None
<i>Subsoil</i>	Yellow/orange sand with gravel inclusions. Numerous plough scarring
<i>Finds</i>	Occasional white ceramic material in top-soil

Trench 18

<i>Dimensions</i>	50 m by 2 m
<i>Orientation</i>	N – S
<i>Topsoil</i>	0.40 m
<i>Old Plough Soil</i>	0.0 m
<i>Depth of Excavation</i>	0.60 m
<i>Significant Features</i>	Crop-mark Curvilinear Feature [1802] at 2.5 m
<i>Other Features</i>	None
<i>Subsoil</i>	Yellow/orange sand with gravel inclusions. Numerous plough scarring
<i>Finds</i>	Occasional white ceramic material in top-soil

Trench 19

<i>Dimensions</i>	50 m by 2 m
<i>Orientation</i>	S – N
<i>Topsoil</i>	0.40 m
<i>Old Plough Soil</i>	0.0 m
<i>Depth of Excavation</i>	0.50 m
<i>Significant Features</i>	None
<i>Other Features</i>	None
<i>Subsoil</i>	Yellow/orange sand with gravel inclusions. Numerous plough scarring
<i>Finds</i>	Occasional white ceramic material in top-soil

Trench 20

<i>Dimensions</i>	60 m by 2 m
<i>Orientation</i>	NNW – SSE
<i>Topsoil</i>	0.40 m
<i>Old Plough Soil</i>	0.0 m
<i>Depth of Excavation</i>	0.40 m – 0.50 m
<i>Significant Features</i>	Large Oval Pit [2002] at 0.0 m extended by 10.0 m to north
<i>Other Features</i>	None
<i>Subsoil</i>	Yellow/orange sand with gravel inclusions. Numerous plough scarring
<i>Finds</i>	Occasional white ceramic material in top-soil

Trench 21

<i>Dimensions</i>	50 m by 2 m
<i>Orientation</i>	E – W
<i>Topsoil</i>	0.40 m
<i>Old Plough Soil</i>	0.0 m
<i>Depth of Excavation</i>	0.50 m
<i>Significant Features</i>	None
<i>Other Features</i>	None
<i>Subsoil</i>	Yellow/orange sand with gravel inclusions. Numerous plough scarring
<i>Finds</i>	Occasional white ceramic material in top-soil

Trench 22

<i>Dimensions</i>	50 m by 2 m
<i>Orientation</i>	SW – NE
<i>Topsoil</i>	0.40 m

<i>Old Plough Soil</i>	0.0 m
<i>Depth of Excavation</i>	0.50 m
<i>Significant Features</i>	None
<i>Other Features</i>	None
<i>Subsoil</i>	Yellow/orange sand with gravel inclusions. Numerous plough scarring
<i>Finds</i>	Occasional white ceramic material in top-soil

Trench 23

<i>Dimensions</i>	100 m by 2 m
<i>Orientation</i>	E – W
<i>Topsoil</i>	0.40 m
<i>Old Plough Soil</i>	0.0 m
<i>Depth of Excavation</i>	0.50 m
<i>Significant Features</i>	None
<i>Other Features</i>	None
<i>Subsoil</i>	Yellow/orange sand with gravel inclusions. Numerous plough scarring
<i>Finds</i>	Occasional white ceramic material in top-soil

Trench 24

<i>Dimensions</i>	50 m by 2 m
<i>Orientation</i>	W – E
<i>Topsoil</i>	0.40 m
<i>Old Plough Soil</i>	0.20 m
<i>Depth of Excavation</i>	0.60 m
<i>Significant Features</i>	None
<i>Other Features</i>	None
<i>Subsoil</i>	Yellow/orange sand with gravel inclusions. Numerous plough scarring
<i>Finds</i>	Occasional white ceramic material in top-soil

Trench 25

<i>Dimensions</i>	50 m by 2 m
<i>Orientation</i>	N – S
<i>Topsoil</i>	0.40 m
<i>Old Plough Soil</i>	0.25 m
<i>Depth of Excavation</i>	0.65 m
<i>Significant Features</i>	None
<i>Other Features</i>	Disturbed ground at 20.0 m -26.0 m coal in sub-soil
<i>Subsoil</i>	Yellow/orange sand with gravel inclusions. Numerous plough scarring
<i>Finds</i>	Occasional white ceramic material in top-soil

Trench 26

<i>Dimensions</i>	50 m by 2 m
<i>Orientation</i>	SW – NE
<i>Topsoil</i>	0.40 m
<i>Old Plough Soil</i>	0.0 m
<i>Depth of Excavation</i>	0.50 m
<i>Significant Features</i>	None
<i>Other Features</i>	Disturbed ground at 0.0 m -12.0 m coal in sub-soil
<i>Subsoil</i>	Yellow/orange sand with gravel inclusions. Numerous plough scarring
<i>Finds</i>	Occasional white ceramic material in top-soil

Trench 27

<i>Dimensions</i>	50 m by 2 m
<i>Orientation</i>	S – N
<i>Topsoil</i>	0.40 m
<i>Old Plough Soil</i>	0.0 m
<i>Depth of Excavation</i>	0.50 m
<i>Significant Features</i>	None

<i>Other Features</i>	None
<i>Subsoil</i>	Yellow/orange sand with gravel inclusions. Numerous plough scarring
<i>Finds</i>	Occasional white ceramic material in top-soil

Trench 28

<i>Dimensions</i>	50 m by 2 m
<i>Orientation</i>	E – W
<i>Topsoil</i>	0.40 m
<i>Old Plough Soil</i>	0.0 m
<i>Depth of Excavation</i>	0.60 m
<i>Significant Features</i>	None
<i>Other Features</i>	None
<i>Subsoil</i>	Yellow/orange sand with gravel inclusions. Numerous plough scarring
<i>Finds</i>	Occasional white ceramic material in top-soil

Trench 29

<i>Dimensions</i>	50 m by 2 m
<i>Orientation</i>	SE – NW
<i>Topsoil</i>	0.40 m
<i>Old Plough Soil</i>	0.0 m
<i>Depth of Excavation</i>	0.50 m
<i>Significant Features</i>	None
<i>Other Features</i>	None
<i>Subsoil</i>	Yellow/orange sand with gravel inclusions. Numerous plough scarring
<i>Finds</i>	Occasional white ceramic material in top-soil

Trench 30

<i>Dimensions</i>	50 m by 2 m
<i>Orientation</i>	NE – SW
<i>Topsoil</i>	0.45 m
<i>Old Plough Soil</i>	0.10 m
<i>Depth of Excavation</i>	0.60 m
<i>Significant Features</i>	None
<i>Other Features</i>	Clay drain at 14.0 m NW/SE
<i>Subsoil</i>	Yellow/orange sand with gravel inclusions. Numerous plough scarring
<i>Finds</i>	Occasional white ceramic material in top-soil

Trench 31

<i>Dimensions</i>	50 m by 2 m
<i>Orientation</i>	E – W
<i>Topsoil</i>	0.40 m
<i>Old Plough Soil</i>	0.0 m
<i>Depth of Excavation</i>	0.60 m
<i>Significant Features</i>	None
<i>Other Features</i>	Clay drain at 15.0 m N/S
<i>Subsoil</i>	Yellow/orange sand with gravel inclusions. Numerous plough scarring
<i>Finds</i>	Occasional white ceramic material in top-soil

Trench 32

<i>Dimensions</i>	50 m by 2 m
<i>Orientation</i>	E – W
<i>Topsoil</i>	0.40 m
<i>Old Plough Soil</i>	0.0 m
<i>Depth of Excavation</i>	0.60 m
<i>Significant Features</i>	None
<i>Other Features</i>	None
<i>Subsoil</i>	Yellow/orange sand with gravel inclusions. Numerous plough scarring
<i>Finds</i>	Occasional white ceramic material in top-soil

Trench 33

<i>Dimensions</i>	50 m by 2 m
<i>Orientation</i>	N- S
<i>Topsoil</i>	0.35 m – 0.40 m
<i>Old Plough Soil</i>	0.0 m
<i>Depth of Excavation</i>	0.40 m
<i>Significant Features</i>	None
<i>Other Features</i>	Clay drain at 14.0 m SE/NW
<i>Subsoil</i>	Yellow/orange sand with gravel inclusions. Numerous plough scarring
<i>Finds</i>	Occasional white ceramic material in top-soil

Trench 34

<i>Dimensions</i>	50 m by 2 m
<i>Orientation</i>	E – W
<i>Topsoil</i>	0.40 m
<i>Old Plough Soil</i>	0.0 m
<i>Depth of Excavation</i>	0.50 m
<i>Significant Features</i>	None
<i>Other Features</i>	Rubble drain at 7.0 m NW/SE
<i>Subsoil</i>	Yellow/orange sand with gravel inclusions. Numerous plough scarring
<i>Finds</i>	Occasional white ceramic material in top-soil

Trench 35

<i>Dimensions</i>	50 m by 2 m
<i>Orientation</i>	W- E
<i>Topsoil</i>	0.35 m
<i>Old Plough Soil</i>	0.0 m
<i>Depth of Excavation</i>	0.45 m
<i>Significant Features</i>	None
<i>Other Features</i>	Clay drain at 3.0 m N/S
<i>Subsoil</i>	Yellow/orange sand with gravel inclusions. Numerous plough scarring
<i>Finds</i>	Occasional white ceramic material in top-soil

Trench 36

<i>Dimensions</i>	50 m by 2 m
<i>Orientation</i>	S – N
<i>Topsoil</i>	0.40 m
<i>Old Plough Soil</i>	0.10 m
<i>Depth of Excavation</i>	0.60 m
<i>Significant Features</i>	None
<i>Other Features</i>	Faint Rig & Furrow aligned E/W at 4.0 m intervals. Rig 2.0 m wide
<i>Subsoil</i>	Yellow/orange sand with gravel inclusions. Numerous plough scarring
<i>Finds</i>	Occasional white ceramic material in top-soil

Trench 37

<i>Dimensions</i>	50 m by 2 m
<i>Orientation</i>	NE – SW
<i>Topsoil</i>	0.40 m
<i>Old Plough Soil</i>	0.0 m
<i>Depth of Excavation</i>	0.50 m
<i>Significant Features</i>	None
<i>Other Features</i>	Faint Rig & Furrow aligned E/W at 4.0 m intervals. Rig 2.0 m wide
<i>Subsoil</i>	Yellow/orange sand with gravel inclusions. Numerous plough scarring
<i>Finds</i>	Occasional white ceramic material in top-soil

Trench 38

<i>Dimensions</i>	50 m by 2 m
<i>Orientation</i>	SW – NE

<i>Topsoil</i>	0.40 m
<i>Old Plough Soil</i>	0.10 m
<i>Depth of Excavation</i>	0.50 m
<i>Significant Features</i>	None
<i>Other Features</i>	Faint Rig & Furrow aligned E/W at 4.0 m intervals. Rig 2.0 m wide
<i>Subsoil</i>	Yellow/orange sand with gravel inclusions. Numerous plough scarring
<i>Finds</i>	Occasional white ceramic material in top-soil

Trench 39

<i>Dimensions</i>	50 m by 2 m
<i>Orientation</i>	E – W
<i>Topsoil</i>	0.40 m
<i>Old Plough Soil</i>	0.0 m
<i>Depth of Excavation</i>	0.50 m
<i>Significant Features</i>	None
<i>Other Features</i>	none
<i>Subsoil</i>	Yellow/orange sand with gravel inclusions. Numerous plough scarring
<i>Finds</i>	Occasional white ceramic material in top-soil

Trench 40

<i>Dimensions</i>	50 m by 2 m
<i>Orientation</i>	S – N
<i>Topsoil</i>	0.35 m
<i>Old Plough Soil</i>	0.0 m
<i>Depth of Excavation</i>	0.45 m
<i>Significant Features</i>	None
<i>Other Features</i>	None
<i>Subsoil</i>	Yellow/orange sand with gravel inclusions. Numerous plough scarring
<i>Finds</i>	Occasional white ceramic material in top-soil

Trench 41

<i>Dimensions</i>	50 m by 2 m
<i>Orientation</i>	W – E
<i>Topsoil</i>	0.50 m
<i>Colluvium</i>	0.0 m
<i>Depth of Excavation</i>	0.10 m – 0.40 m
<i>Significant Features</i>	None
<i>Other Features</i>	Rubble drain at 15.0 m NNW/SSE
<i>Subsoil</i>	Yellow/orange sand with gravel inclusions. Numerous plough scarring
<i>Finds</i>	Occasional white ceramic material in top-soil

Trench 42

<i>Dimensions</i>	50 m by 2 m
<i>Orientation</i>	NE – SW
<i>Topsoil</i>	0.50 m
<i>Old Plough Soil</i>	0.0 m
<i>Depth of Excavation</i>	0.60 m
<i>Significant Features</i>	None
<i>Other Features</i>	None
<i>Subsoil</i>	Yellow/orange sand with gravel inclusions. Numerous plough scarring
<i>Finds</i>	Occasional white ceramic material in top-soil

Trench 43

<i>Dimensions</i>	50 m by 2 m
<i>Orientation</i>	NE – SW
<i>Topsoil</i>	0.40 m – 0.60 m
<i>Colluvium</i>	0.50 m

<i>Depth of Excavation</i>	0.50 m – 1.10 m
<i>Significant Features</i>	None
<i>Other Features</i>	None
<i>Subsoil</i>	Yellow/orange sand with gravel inclusions. Numerous plough scarring
<i>Finds</i>	Occasional white ceramic material in top-soil

Trench 44

<i>Dimensions</i>	50 m by 2 m
<i>Orientation</i>	SW – NE
<i>Topsoil</i>	0.40 m – 0.50 m
<i>Colluvium</i>	0.20 m – 0.40 m
<i>Depth of Excavation</i>	0.70 m – 1.20 m
<i>Significant Features</i>	None
<i>Other Features</i>	Disturbance at 19.0 m – 23.0 m containing coal and white ceramic
<i>Subsoil</i>	Yellow/orange sand with gravel inclusions. Numerous plough scarring
<i>Finds</i>	Occasional white ceramic material in top-soil

Trench 45

<i>Dimensions</i>	50 m by 2 m
<i>Orientation</i>	NE – SW
<i>Topsoil</i>	0.50 m
<i>Colluvium</i>	0.40 m
<i>Depth of Excavation</i>	0.90 m
<i>Significant Features</i>	None
<i>Other Features</i>	None
<i>Subsoil</i>	Yellow/orange sand with gravel inclusions. Numerous plough scarring
<i>Finds</i>	Occasional white ceramic material in top-soil

Trench 46

<i>Dimensions</i>	50 m by 2 m
<i>Orientation</i>	SW – NE
<i>Topsoil</i>	0.40 m – 0.50 m
<i>Colluvium</i>	0.20 m – 0.40 m
<i>Depth of Excavation</i>	0.50 m – 0.65 m
<i>Significant Features</i>	None
<i>Other Features</i>	Disturbance at 20.0 m – 26.0 m containing coal and white ceramic. Rubble Drain at 7.0 m N/S
<i>Subsoil</i>	Yellow/orange sand with gravel inclusions. Numerous plough scarring
<i>Finds</i>	Occasional white ceramic material in top-soil

Trench 47

<i>Dimensions</i>	50 m by 2 m
<i>Orientation</i>	NNW – SSE
<i>Topsoil</i>	0.40 m
<i>Colluvium</i>	0.0 m
<i>Depth of Excavation</i>	0.50 m
<i>Significant Features</i>	None
<i>Other Features</i>	None
<i>Subsoil</i>	Yellow/orange sand with gravel inclusions. Numerous plough scarring
<i>Finds</i>	Occasional white ceramic material in top-soil

Trench 48

<i>Dimensions</i>	50 m by 2 m
<i>Orientation</i>	N – S
<i>Topsoil</i>	0.40 m
<i>Colluvium</i>	0.0 m
<i>Depth of Excavation</i>	0.50 m
<i>Significant Features</i>	None
<i>Other Features</i>	None
<i>Subsoil</i>	Yellow/orange sand with gravel inclusions. Numerous plough scarring

Finds Occasional white ceramic material in top-soil

Trench 49

Dimensions 50 m by 2 m
Orientation S – N
Topsoil 0.45 m
Colluvium 0.00 m
Depth of Excavation 0.50 m
Significant Features None
Other Features None
Subsoil Yellow/orange sand with gravel inclusions. Numerous plough scarring
Finds Occasional white ceramic material in top-soil

Trench 50

Dimensions 50 m by 2 m
Orientation NNW – SSE
Topsoil 0.40 m
Colluvium 0.0 m
Depth of Excavation 0.50 m
Significant Features None
Other Features None
Subsoil Yellow/orange sand with gravel inclusions. Numerous plough scarring
Finds Occasional white ceramic material in top-soil

Trench 51

Dimensions 50 m by 2 m
Orientation W – E
Topsoil 0.40 m
Old Plough Soil 0.10 m
Depth of Excavation 0.50 m
Significant Features None
Other Features None
Subsoil Yellow/orange sand with gravel inclusions. Numerous plough scarring
Finds Occasional white ceramic material in top-soil

Trench 52

Dimensions 50 m by 2 m
Orientation E – W
Topsoil 0.40 m
Old Plough Soil 0.0 m
Depth of Excavation 0.50 m
Significant Features None
Other Features None
Subsoil Yellow/orange sand with gravel inclusions. Numerous plough scarring
Finds Occasional white ceramic material in top-soil

Trench 53

Dimensions 50 m by 2 m
Orientation W – E
Topsoil 0.50 m
Old Plough Soil 0.0 m
Depth of Excavation 0.60 m
Significant Features None
Other Features None
Subsoil Yellow/orange sand with gravel inclusions. Numerous plough scarring
Finds Occasional white ceramic material in top-soil

Trench 54

<i>Dimensions</i>	50 m by 2 m
<i>Orientation</i>	NE – SW
<i>Topsoil</i>	0.45 m
<i>Old Plough Soil</i>	0.05 m
<i>Depth of Excavation</i>	0.50 m
<i>Significant Features</i>	None
<i>Other Features</i>	Rig & Furrow at 4.0 m intervals. Furrows are 2. M wide
<i>Subsoil</i>	Yellow/orange sand with gravel inclusions. Numerous plough scarring
<i>Finds</i>	Occasional white ceramic material in top-soil

Trench 55

<i>Dimensions</i>	50 m by 2 m
<i>Orientation</i>	NNW –SSE
<i>Topsoil</i>	0.40 m
<i>Old Plough Soil</i>	0.0 m
<i>Depth of Excavation</i>	0.50 m
<i>Significant Features</i>	None
<i>Other Features</i>	None
<i>Subsoil</i>	Yellow/orange sand with gravel inclusions. Numerous plough scarring
<i>Finds</i>	Occasional white ceramic material in top-soil

Trench 56

<i>Dimensions</i>	50 m by 2 m
<i>Orientation</i>	SSE – NNW
<i>Topsoil</i>	0.50 m
<i>Old Plough Soil</i>	0.20 m
<i>Depth of Excavation</i>	0.70 m
<i>Significant Features</i>	None
<i>Other Features</i>	None
<i>Subsoil</i>	Yellow/orange sand with gravel inclusions. Numerous plough scarring
<i>Finds</i>	Occasional white ceramic material in top-soil

Trench 57

<i>Dimensions</i>	50 m by 2 m
<i>Orientation</i>	W – E
<i>Topsoil</i>	0.50 m
<i>Old Plough Soil</i>	0.10 m
<i>Depth of Excavation</i>	0.60 m
<i>Significant Features</i>	None
<i>Other Features</i>	None
<i>Subsoil</i>	Yellow/orange sand with gravel inclusions. Numerous plough scarring
<i>Finds</i>	Occasional white ceramic material in top-soil

Trench 58

<i>Dimensions</i>	50 m by 2 m
<i>Orientation</i>	W – E
<i>Topsoil</i>	0.50 m
<i>Old Plough Soil</i>	0.0 m
<i>Depth of Excavation</i>	0.60 m
<i>Significant Features</i>	None
<i>Other Features</i>	None
<i>Subsoil</i>	Yellow/orange sand with gravel inclusions. Numerous plough scarring
<i>Finds</i>	Occasional white ceramic material in top-soil

Trench 59

<i>Dimensions</i>	50 m by 2 m
<i>Orientation</i>	W – E
<i>Topsoil</i>	0.50 m

<i>Old Plough Soil</i>	0.20 m
<i>Depth of Excavation</i>	0.70 m
<i>Significant Features</i>	None
<i>Other Features</i>	None
<i>Subsoil</i>	Yellow/orange sand with gravel inclusions. Numerous plough scarring
<i>Finds</i>	Occasional white ceramic material in top-soil

APPENDIX 2: Context Descriptions

Context	Description
01	Top-soil – Improved dark grey/brown sandy plough soil. Well sorted with occasional 19 th century ceramics, stoneware and glass. 0.35 m – 0.55 m in depth
02	Old plough soil – Light brown sandy silt with occasional small sub-rounded stones. 0.10 m – 0.20 m in depth
03	Sub-soil – Orange brown sands and gravels
04	Colluvium
302	Cut – Shallow linear cut with gently sloping sides and rounded base. Aligned NE/SW across trench. The feature is 0.40 m wide and 0.07 m in depth. Filled by (303)
303	Fill –Mid-grey brown compact sandy silt. Fill of [302]
502	Cut – Shallow linear cut aligned NE/SW across trench. Unexcavated. The feature is 0.40 m wide. Filled by (503)Same as [302]
503	Fill – Mid-grey brown compact sandy silt. Fill of [502]
1602	Cut – Partially exposed linear cut. Cut is visible for 4.0 m in length aligned NW to SE across the trench. The feature is 0.40m in width with a depth of 0.25 m. The cut has almost vertically sloping sides and a flat base. Filled by (1603). Appears to be conjoined with [1604] relationship unclear. Outer beam slot for rectilinear prehistoric building [1606]. Visible as crop-mark.
1603	Fill – Medium brown silty sand with inclusions of small sub-angular stones throughout <5%. Contains possible flecks of charcoal. Fill of [1602] rectilinear structure [1606].
1604	Cut – Partially exposed linear cut. Cut is visible for 4.0 m in length aligned NW to SE across the trench. The feature is 0.40m in width with a depth of 0.25 m. The cut has moderately sloping sides and a concave base. Filled by (1605). Appears to be conjoined with [1602] relationship unclear. Interior partition beam slot for rectilinear prehistoric building [1606]. Visible as crop-mark.
1605	Fill – Medium brown silty sand with inclusions of small sub-angular stones throughout <5%. Contains possible flecks of charcoal. Fill of [1604] rectilinear structure [1606].
1802	Cut –Curvilinear cut feature 1.30 m wide crossing trench aligned E/W. Cut has almost vertically sloping northern edge and a gradually sloping southern edge. Flat base. Feature is 0.17 m in depth.Filled by (1803). Possible prehistoric Barrow Ditch of known crop-mark. Heavily truncated by ploughing with no return in evidence.
1803	Fill – Medium grey brown sandy silt with possible flecks of charcoal. Fill of [1802].
2002	Cut – Large oval cut with a visible length of 8.0 m and a width of 5.0 m. Depth 0.70 m. The cut appears to run into the northern boundary of the site. Filled by (2003). Filled by (2003). Possible mining pit of unknown date.
2003	Fill – Mixed fill of re-deposited top-soil and sub-soilDark brown sandy silt with flecks of charcoal and burnt bone fragments. Fill of [1210]

APPENDIX 3: Photographic Record

Digital Photographs

Frame	Description	From
1	Registration	-
2	Trench 20 post-excavation shot	SSE
3	Trench 18 post-excavation shot	SSE
4	Trench 16 post-excavation shot	SW
5	Trench 13 post-excavation shot	E
6-7	Working shots excavation of [2002]	W
8	Trench 15 post-excavation shot	N
9	Trench 14 post-excavation shot	N
10	Trench 10 post-excavation shot	N
11	Trench 2 post-excavation shot	E
12	Trench 3 post-excavation shot	W
13	General shot of Linear Ditch [302]	SW
14	Post excavation shot of slot through Linear Ditch [302]	W
15	South facing section of Linear Ditch [302]	S
16	Trench 4 post-excavation shot	S
17	Trench 5 post-excavation shot	S
18	Trench 34 post-excavation shot	NE
19	Trench 41 post-excavation shot	NE
20	Trench 44 post-excavation shot	NE
21	Trench 46 post-excavation shot	SE
22	Trench 45 post-excavation shot	SW
23	Trench 47 post-excavation shot	SSE
24	Trench 50 post-excavation shot	SSE
25	Trench 54 post-excavation shot	SW
26	Trench 57 post-excavation shot	W
27	Trench 59 post-excavation shot	W
28	Trench 56 post-excavation shot	SW
29	Trench 53 post-excavation shot	SW
30	Trench 49 post-excavation shot	S
31	Trench 43 post-excavation shot	SW
32	Trench 42 post-excavation shot	SW
33	Trench 48 post-excavation shot	S
34	Trench 58 post-excavation shot	W

35	Trench 52 post-excavation shot	W
36	Trench 55 post-excavation shot	S
37	Trench 58 post-excavation shot	W
38	Trench 39 post-excavation shot	W
39	Trench 38 post-excavation shot	NE
40	Trench 37 post-excavation shot	W
41	Trench 36 post-excavation shot	N
42	Trench 24 post-excavation shot	E
43	Trench 51 post-excavation shot	E
44	Trench 40 post-excavation shot	N
45	Trench 35 post-excavation shot	W
46	Trench 19 post-excavation shot	N
47	Trench 23 post-excavation shot	W
48	Trench 31 post-excavation shot	W
49	Trench 33 post-excavation shot	S
50	Trench 30 post-excavation shot	SW
51	Trench 29 post-excavation shot	W
52	Trench 28 post-excavation shot	N
53	Trench 27 post-excavation shot	NW
54	Trench 25 post-excavation shot	NE
55	Trench 22 post-excavation shot	NW
56	Trench 17 post-excavation shot	W
57	Trench 21 post-excavation shot	W
58	Post excavation shot of Pit [2002]	W
59	Trench 11 post-excavation shot	SSE
60	Trench 06 post-excavation shot	SW
61	Trench 21 post-excavation shot	SE
62	Trench 9 post-excavation shot	SSE
63	Trench 7 post-excavation shot	S
64	Trench 8 post-excavation shot	NE
65	Trench 12 post-excavation shot	NE
66	Trench 26 post-excavation shot	NE
67	Post excavation shot of Ditch Slot [1604]	SE
68	North-east facing section through Ditch Slot [1604]	NE
69	Post excavation shot of Ditch slot [1602]	SW
70	South-east facing section through Ditch Slot [1602]	SE
71-73	General shot of Rectilinear structure [1606]	Var
74-75	General shot of Linear Ditch [1802]	Var
76	Post excavation shot of Linear Ditch slot [1802]	S
77	North-west facing section through Ditch Slot [1802]	NW

APPENDIX 4: Drawing Register

No.	Description	Scale
1	Plan of Structure [1606] showing Linear Ditch features [1602-1604]	1:20
2	Plan of Linear Ditch [1802]	1:20
3	Plan of Linear Boundary Ditch [302]	1:20
4	Plan of Pit Feature [2002]	1:20
5	North-east facing section through Linear Ditch feature [1604]	1:10
6	South-east facing section through Linear Ditch feature [1602]	1:10
7	East facing section through Linear Ditch feature [1802]	1:10
8	North-east facing section through Linear Boundary Ditch feature [1802]	1:10

APPENDIX 5: Small Finds Register (Metal Detecting Survey)

No.	Description	Material
1(706)	Scrap	Lead
2(707)	Machine tooled clasp	Brass
3(708)	Scrap	Aluminium
4(709)	Scrap	Lead
5(710)	Victorian penny	Copper
6(711)	Machine part	Zinc/Steel
7(712)	Circular disc with central hole	Lead
8(713)	Victorian Halfpenny	Copper
9(714)	Scrap	Zinc
10(715)	Scrap	Lead
11(716)	Scrap	Lead
12(717)	Buckle Pin	Lead
13(718)	Scrap	Lead
14(719)	Victorian penny	Copper
15(720)	Scrap	Lead
16(721)	Button	Brass
17(722)	Machine tooled object	Brass
18(723)	Machine tooled object	Brass
19(724)	Scrap	Lead
20(725)	Tip off scythe	Iron
21(726)	Misc object	Lead
22(727)	Scrap	Lead
23(728)	Victorian penny	Copper
24(729)	Misc object	Iron
25(730)	Strap	Brass

26(731)	Disc	Lead
27(732)	Misc object	Lead
28(733)	Scrap	Lead
29(734)	Ring	Brass
30(735)	Tube	Lead
31(736)	Sheet	Aluminium
32(737)	Misc object	Lead
33(738)	Misc object with denticulated edges	Lead
34(739)	Cartridge cap	Brass
35(740)	Scrap	Lead
36(741)	Scrap	Brass
37(742)	Coin 17 th century 'turner'	Copper
38(743)	Misc object	Iron
39(744)	Scrap	Lead
40(745)	Bolt	Iron
41(746)	Tube	Brass
42(747)	Misc object	Iron
43(748)	Scrap	Lead
44(749)	Misc object	Lead
45(750)	Pocket watch	Brass
46(751)	Mount? Strap ornament? With moulded rose decoration	Copper
47(752)	Buckle	Brass
48(753)	Furniture decoration	Brass
49(754)	Tube	Lead
50(755)	Scrap	Lead
51(756)	Machine tooled disc	Brass
52(757)	Curved decorative object	Lead
53(758)	Scrap	Lead
54(759)	Misc object	Lead
55(760)	Coin 17 th century 'turner'	Copper
56(761)	Scrap	Lead
57(762)	Misc object	Brass
58(763)	Misc object	Brass
59(764)	Scrap	Lead
60(765)	Scrap	Lead
61(766)	Coin 18 th century	Copper
62(767)	Scrap	Lead
63(768)	Misc rectangular object	Brass
64(769)	Buckle	Brass
65(770)	Hoop	Brass
66(771)	Tube	Lead

67(772)	Token coin	Brass
68(773)	Cartridge Cap	Brass
69(774)	Clasp	Brass
70(775)	Coin 18 th century	Copper
71(776)	Disc	Iron
72(777)	Plate	Iron
73(778)	Scrap	Zinc
74(779)	Wire	Steel
75(780)	Plate	Brass
76(781)	Misc object	Iron
77(782)	Machine tooled metal rim	Brass
78(783)	Strap	Brass
79(784)	Misc object	Iron
80(785)	Misc object	Iron
81(786)	Plate	Brass
82(787)	Disc	Iron
83(788)	Scrap	Lead
84(789)	Scrap	Lead

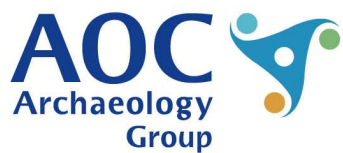
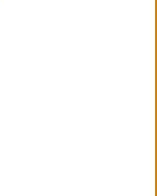
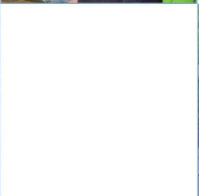
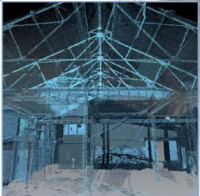
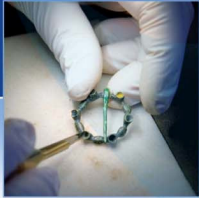
APPENDIX 6: Sample Register

Sample	Context
20 litres	(1603)
20 litres	(1605)
20 litres	(1803)

APPENDIX 7: 'Discovery and Excavation in Scotland' Report

LOCAL AUTHORITY:	East Lothian Council
PROJECT TITLE/SITE NAME	Land at Dolphingstone Farm, Prestonpans, East Lothian: Archaeological
PROJECT CODE:	AOC 23520
PARISH:	Prestonpans
NAME OF CONTRIBUTOR:	Rob Engl
NAME OF ORGANISATION:	AOC Archaeology Group
TYPE(S) OF PROJECT:	Archaeological Evaluation & Metal Detecting Survey
NMRS NO(S)	None
SITE/MONUMENT TYPE(S):	Rectangular 'timber hall', Curvilinear and Linear ditches, Pit
SIGNIFICANT FINDS:	Three 17 th century coins, lead scrap, machine tooled objects
NGR (2 letters, 6 figures)	NT37807 73172
START DATE (this season)	5 th September 2016
END DATE (this season)	21 st September 2016
PREVIOUS WORK (incl. DES ref.)	None
MAIN (NARRATIVE) DESCRIPTION: (May include information from other fields)	<p>This report presents the results of an archaeological evaluation and archaeological metal detecting survey undertaken in respect to a proposed development at Dolphingstone Farm, Prestonpans, East Lothian (centred on NGR: NT 37807 73172).</p> <p>The site lies within the eastern limit of the Inventory Boundary of the Battle of Pinkie 1547. The metal detecting survey was therefore undertaken in order to recover remains associated with the battle. The survey recovered a total of 84 metal finds. These included coins of 17th and 19th century date, modern moulded and machine tooled objects and a quantity of lead scrap. No objects could be definitively associated with the 'English Camp'.</p> <p>The evaluation was undertaken within a single land parcel of 6 ha. A 8% (3000 linear metres) sample of the evaluation area was investigated by trial trenching. The scope of the works was agreed in a WSI approved by Mr Andrew Robertson of East Lothian Archaeological Service (ELCAS).</p> <p>The archaeological evaluation sought to target the crop-marks of a number of features (HER MEL2552) recorded within the site area. The evaluation successfully revealed a trapezoidal enclosure and the partial survival of a possible barrow, both of these features are of probable prehistoric date. A small field boundary ditch of possible post medieval date and the faint remains of post medieval rig and furrow agriculture were also recorded. The site area was surrounded by several former 19th century pit heads. A large rectangular pit thought to be associated with mining activity was also recorded. Disturbed sub-soil was in evidence along the northern and western site boundaries. This contained coal and quantities of 19th century ceramics. The disturbance is again most probably associated with mining activity. The evaluation also revealed that the entire site area had undergone significant truncation due to heavy ploughing.</p>

	No archaeologically significant small finds were recovered during the evaluation.
PROPOSED FUTURE WORK:	Yes
CAPTION(S) FOR ILLUSTRS:	---
SPONSOR OR FUNDING BODY:	CgMs Consulting
ADDRESS OF MAIN CONTRIBUTOR:	Edgefield Road Industrial Estate, Loanhead, Midlothian, EH20 9SY
EMAIL ADDRESS:	Rob.Engl@aocarchaeology.com
ARCHIVE LOCATION (intended/deposited)	Archive to be deposited in NMRS



AOC Archaeology Group, Edgefield Industrial Estate, Edgefield Road, Loanhead EH20 9SY
tel: 0131 440 3593 | fax: 0131 440 3422 | e-mail: admin@aocarchaeology.com

www.aocarchaeology.com