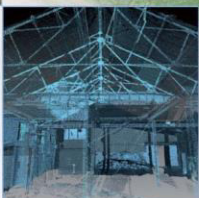
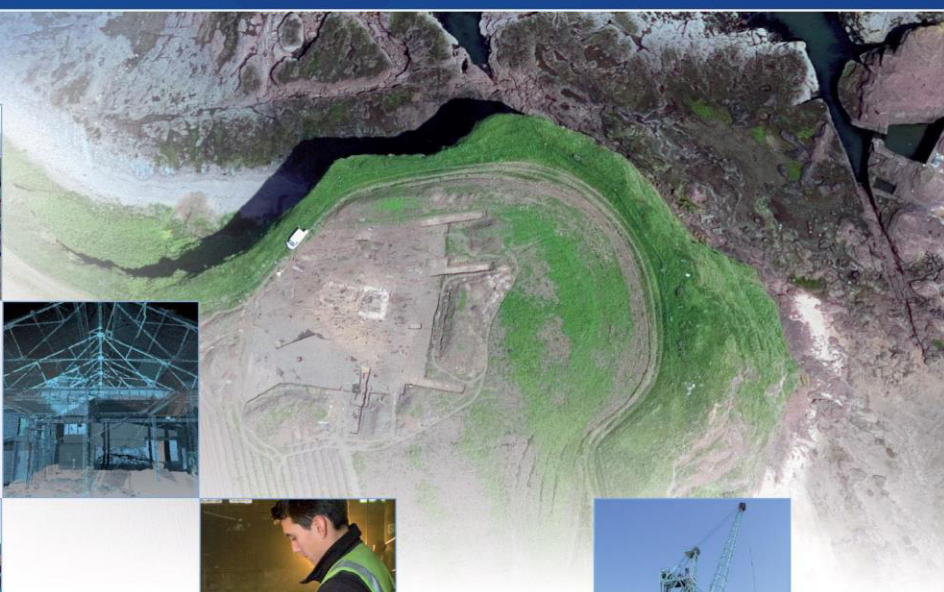
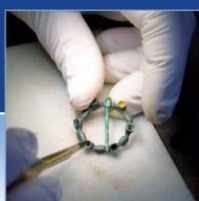


# Jamesfield Farm, Newburgh, Perth & Kinross: Archaeological Evaluation Data Structure Report

AOC Project 23562

20<sup>th</sup> October 2016

Planning Ref: 15/00833/FLL



# **Jamesfield Farm, Newburgh, Perth & Kinross: Archaeological Evaluation Data Structure Report**

---

<b>On Behalf of:</b>	<b>Selettra Holdings Ltd</b>
<b>National Grid Reference (NGR):</b>	<b>NO 20050 17956 (centred)</b>
<b>OASIS No:</b>	<b>1-266217</b>
<b>AOC Project No:</b>	<b>23562</b>
<b>Prepared by:</b>	<b>Rob Engl</b>
<b>Date of Fieldwork:</b>	<b>3<sup>rd</sup>– 7<sup>th</sup> October 2016</b>
<b>Date of Report:</b>	<b>20<sup>th</sup> October 2016</b>

This document has been prepared in accordance with AOC standard operating procedures.

<b>Author: Rob Engl</b>	<b>Date: 20<sup>th</sup> October 2016</b>
<b>Approved by: Ross Murray</b>	<b>Date: 20<sup>th</sup> October 2016</b>
<b>Draft/Final Report Stage: Draft</b>	<b>Date: 20<sup>th</sup> October 2016</b>

**Enquiries to:** AOC Archaeology Group  
Edgefield Industrial Estate  
Edgefield Road  
Loanhead  
EH20 9SY

Tel. 0131 440 3593  
Fax. 0131 440 3422  
e-mail. [admin@aocarchaeology.com](mailto:admin@aocarchaeology.com)



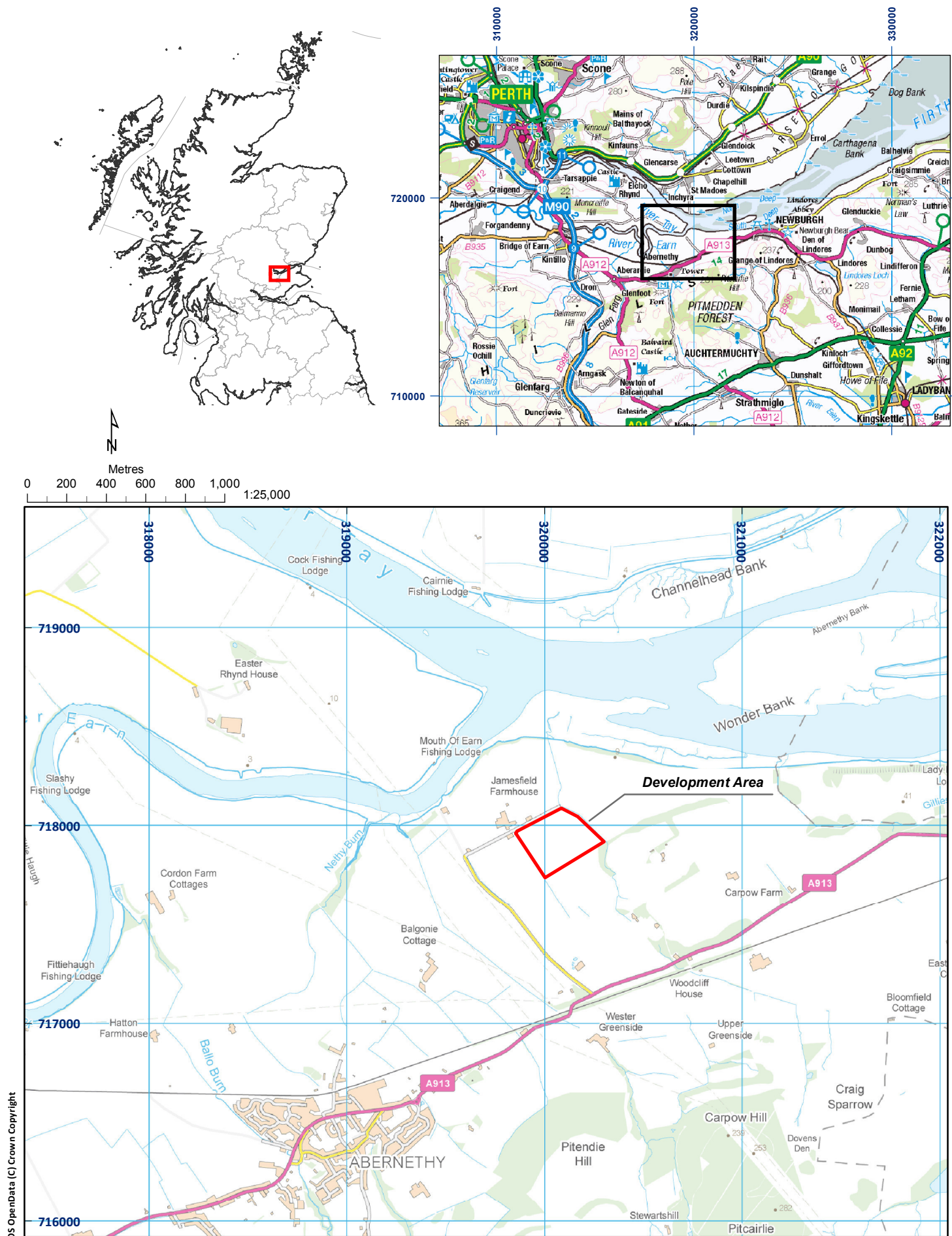


Figure 1: Site location plan

01/23562/REP/01a/01

## Contents

	Page
List of Illustrations .....	4
List of Plates .....	4
List of Appendices .....	4
Abstract.....	5
1 INTRODUCTION .....	7
1.1 Background .....	7
1.2 Location.....	7
1.3 Archaeological Background.....	8
2 OBJECTIVES .....	8
3 METHODOLOGY .....	8
4 RESULTS .....	9
5 CONCLUSION AND RECOMMENDATIONS.....	11
6 REFERENCES .....	11
APPENDIX 1: Trench Descriptions .....	13
APPENDIX 2: Photographic Register .....	20
APPENDIX 4: ' <i>Discovery and Excavation in Scotland</i> ' Report.....	22

## List of Illustrations

Figure 1	Site location
Figure 2	Evaluation trench locations

## List of Plates

Plate 1	Trench 1 post-excavation
Plate 2	Geophysical anomaly showing colluvial infill
Plate 3	Evaluation area from south

## List of Appendices

Appendix 1	Trench Descriptions
Appendix 2	Photographic Record
Appendix 3	<i>'Discovery and Excavation in Scotland'</i> Report



## Abstract

---

This report presents the results of an archaeological evaluation undertaken in relation to the construction of a proposed Solar Farm development at Jamesfield Farm, Newburgh, Perth & Kinross (NGR: NO 20050 17956

The evaluation required a 5% trenching sample of the proposed 8.5 hectare development area (2,125 linear metres). The development is situated on open, farmland close to the confluence of the River Earn and River Tay.

Trenching revealed drift geology of raised marine and estuarine clays, sands and gravels. Numerous rubble and tile drains were observed running downslope north to south. These drains were set at 5.0 m intervals. The natural was overlain by a compact, improved plough soil which ranged from 0.30 m to 0.40 m in depth.

A geophysical survey undertaken prior to the evaluation had revealed a promising suite of possible features. However the evaluation revealed these to be related to changes in natural and modern drainage.

The only archaeologically significant remains recorded during the evaluation were the ephemeral traces of 18<sup>th</sup>/19<sup>th</sup> century broad rig and furrow agriculture which ran across the site aligned north-east to south-west. Occasional sherds of 19<sup>th</sup> century ceramics were observed within the plough soil.

A previous walk over of the site had produced a small assemblage of Roman *imbrex* terracotta roof tile. A few small pieces of this material including a pan tile were recovered from the plough soil during the evaluation.

Given the lack of significant archaeological remains and the level of recording undertaken no further works are considered necessary. This will be determined by Perth and Kinross Heritage Trust (PKHT) on behalf of Perth & Kinross Council.

# 1 INTRODUCTION

## 1.1 Background

- 1.1.1 AOC Archaeology Group was commissioned by Selettra Holdings Ltd, to undertake an archaeological evaluation in advance of a proposed Solar Farm on land at Jamesfield Farm, Newburgh, Perth & Kinross.
- 1.1.2 The area lies within the administrative jurisdiction of Perth & Kinross Council, who are advised on archaeological matters by Perth and Kinross Heritage Trust (PKHT). These works were required as part of a planning condition (Ref. 15/00833/FLL) and undertaken in accordance with Scottish Planning Policy (2014) and PAN 2/2011 Planning and Archaeology (2011), in order to expose, excavate and record any archaeological remains that would be subject to an adverse impact by the development proposals.
- 1.1.3 With the exception of ephemeral broad rig agriculture no archaeologically significant features were observed. Several sherds of Roman *imbrex* terracotta roof tile were recovered from the plough soil.

## 1.2 Location

- 1.2.1 The proposed development site is located to the south east of Jamesfield Farmhouse, approximately 2km outside of Abernethy north of the A913 Abernethy Road, centred at NO 20050 17956 (see Figure 1).
- 1.2.2 The northern half of the survey area is situated on relatively level ground at approximately 11m OD, which rises gradually in the south to 15m OD before a steep hillock rises to approximately 20m OD.
- 1.2.3 The recorded geology within the site comprises of the Glenvale Sandstone Formation – Devonian rock formed 359 – 385 million years ago in an environment dominated by rivers, overlain by superficial Raised Marine Deposits of a Devensian age (clays, silts, sands and gravels) (BGS 2016). These are overlain by Gleys – Estuarine and lacustrine raised beach silts and clays in the northern part of site, and Brown Earths – raised beach sands and gravels derived mainly from Old Red Sandstone sediments and lavas in the southern part of site (Soils Scotland 2016).
- 1.2.4 The survey area is bounded by a hedgerow and private road along the northern boundary, and arable fields and hedgerows to the east, south and west. An area of woodland encroaches on the very south eastern boundary, and a small stream follows the eastern boundary running north towards the estuary.



## 1.3 Archaeological Background

- 1.3.1 The site is located close to the confluence of the River Earn and the River Tay, and the surrounding landscape is rich in terms of archaeological resource. Remains from the medieval period are present

in the landscape with frequent areas of rig and furrow ploughing. Within the site boundary itself, a medieval shield shaped pendant was found by metal detectors (HER MPK13348). Immediately south-east of the survey area is the large Roman Fortress of Carpow (MPK4624), an enclosure with ridge and furrow ploughing (MPK5664), a round house with ridge and furrow ploughing (MPK4627), a temporary Roman camp (MPK5552) and a rectilinear enclosure (MPK4631).

- 1.3.2 A recently constructed single wind turbine is present to the south of the development area (NGR NO 2009 1775). An archaeological evaluation was undertaken at the time and no archaeological features were recorded (OASIS ID rathmell1-222755 (T Rees) 2015) (Canmore 2016).

## 2 OBJECTIVES

- 2.1 The objectives of the archaeological evaluation were:
- i) to determine and assess the character, extent, condition, quality, date and significance of any buried archaeological remains within the proposed development area;
  - ii) to advise and implement an appropriate form of mitigation, such as excavation, post-excavation analyses and publication given the infeasibility of preserving the archaeological material *in situ*, should significant archaeological remains be encountered.

## 3 METHODOLOGY

- 3.1 The archaeological evaluation was designed to meet the requirements of Perth & Kinross Council as advised by Perth and Kinross Archaeological Trust (PKHT).
- 3.2 The development area measures c. 8.5 ha. The Council required that a 5% evaluation was undertaken across the site, therefore requiring trenching totalling 2,125 linear metres.
- 3.3 The evaluation was undertaken by a 13 tonne excavator equipped with 2.0 m wide ditching bucket. Excavation was undertaken in shallow units/spits until natural drift geology was reached. All machine excavation was supervised by an experienced field archaeologist and undertaken according to AOC Archaeology Group's standard operating procedures, and as per the methodology within the *Written Scheme of Investigation* (AOC 2016).

## 4 RESULTS

- 4.1 The archaeological evaluation was undertaken on the 3<sup>rd</sup> – 7<sup>th</sup> October 2016. Weather conditions were changeable yet good archaeological visibility was present throughout. Due to the presence of an overhead cable a total of 2,025 linear metres were opened across of the proposed development area (Figure 2).
- 4.2 The evaluation trenches revealed a compact, improved clay plough-soil ranging from 0.30 m to 0.40 m in depth. Occasional sherds of white and patterned 19<sup>th</sup> century ceramics were observed in several of the trenches.
- 4.3 The plough-soil lay directly over natural drift geology of compact yellow brown raised clay. Numerous plough scars were present. A thin colluvial deposit of red/brown silt ranging from 0.10 m to 0.20 m was observed within the trenches situated at the base of the slope along the northern boundary.
- 4.4 Numerous deeply set rubble and ceramic tile drains of 18<sup>th</sup>/19<sup>th</sup> century date were observed set at 5.0 m intervals and aligned downslope north to south across the site area.
- 4.5 Archaeologically significant features were restricted to the presence of ephemeral traces of broad rig and furrow agriculture. These were spaced at four metre intervals and were 0.10 m in depth.
- 4.6 A previous walk over of the site had produced a small assemblage of Roman *imbrex* terracotta roof tile. A few small pieces of this material including a pan tile were recovered from the plough soil during the evaluation.



**Plate 1 Trench 1 post-excitation**



**Plate 2 Trench 4 Geophysical anomaly showing colluvial infill**





**Plate 3 Evaluation area from south**

## **5 CONCLUSION AND RECOMMENDATIONS**

- 5.1 Given the largely negative findings produced by the evaluation and the level of recording undertaken no further archaeological works associated the development are considered necessary. This will be determined by PKHT on behalf of Perth & Kinross Council.

## **6 REFERENCES**

AOC Archaeology 2016, *Jamesfield Farm, Perth & Kinross: Archaeological Evaluation Written Scheme of Investigation* Unpublished AOC project design

Scottish Government 2014 *Scottish Planning Policy*, 2014

Scottish Government 2011 *Planning And Archaeology* 2/2011

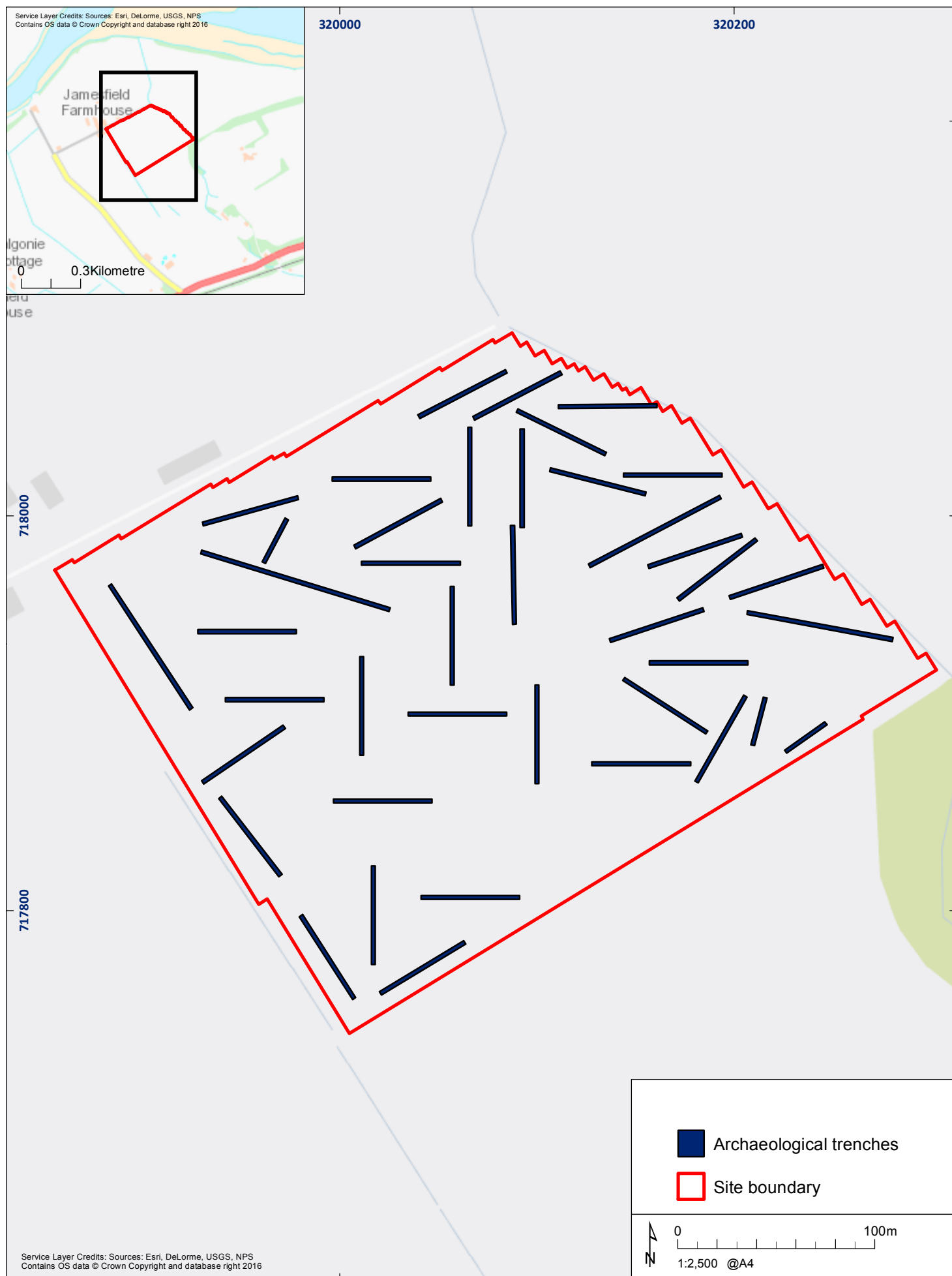


Figure 2: Evaluation trench locations

PUT DWG NO HERE

# **Jamesfield Farm, Perth & Kinross: Archaeological Evaluation Data Structure Report**

## **Section 2: Appendices**



## APPENDIX 1: Trench Descriptions

### Trench 1

<i>Dimensions</i>	50 m by 2.0 m
<i>Excavated Orientation</i>	NE to SW
<i>Plough-soil</i>	0.30 m
<i>Depth of Excavation</i>	0.35 m
<i>Significant Features</i>	None
<i>Other Features</i>	None
<i>Natural Subsoil</i>	Compact orange brown clay with occasional plough scarring and occasional stone drags
<i>Finds</i>	None

### Trench 2

<i>Dimensions</i>	50 m by 2.0 m
<i>Excavated Orientation</i>	NE to SW
<i>Plough-soil</i>	0.30 m
<i>Depth of Excavation</i>	0.40 m
<i>Significant Features</i>	None
<i>Other Features</i>	Broken tile drain at 6.0 m N-S. Drain cuts at 2.5 m & 35.0 m N-S
<i>Natural Subsoil</i>	Orange-yellow clay with heavy plough scarring and occasional stone drags
<i>Finds</i>	None

### Trench 3

<i>Dimensions</i>	50 m by 2.0 m
<i>Excavated Orientation</i>	N to S
<i>Plough-soil</i>	0.40 m
<i>Depth of Excavation</i>	0.45 m
<i>Significant Features</i>	None
<i>Other Features</i>	Remains of rig & furrow at 5.0 m intervals NE-SW
<i>Natural Subsoil</i>	Compact orange brown clay with occasional plough scarring and occasional stone drags
<i>Finds</i>	None

### Trench 4

<i>Dimensions</i>	50 m by 2.0 m
<i>Excavated Orientation</i>	E to W
<i>Plough-soil</i>	0.40 m
<i>Depth of Excavation</i>	0.45 m
<i>Significant Features</i>	None
<i>Other Features</i>	Rubble drains at 3.5 m N-S
<i>Natural Subsoil</i>	Sands and gravels
<i>Finds</i>	None

### Trench 5

<i>Dimensions</i>	50 m by 2.0 m
<i>Excavated Orientation</i>	SE to NW
<i>Plough-soil</i>	0.40 m
<i>Depth of Excavation</i>	0.40 m
<i>Significant Features</i>	None
<i>Other Features</i>	Broken tile drain at 40.0 m N-S
<i>Natural Subsoil</i>	Compact grey-orange clay with occasional plough scarring and occasional stone drags
<i>Finds</i>	None

**Trench 6**

<i>Dimensions</i>	50 m by 2.0 m
<i>Excavated Orientation</i>	N to S
<i>Plough-soil</i>	0.35 m – 0.40 m
<i>Depth of Excavation</i>	0.35 m – 0.40 m
<i>Significant Features</i>	None
<i>Other Features</i>	None
<i>Natural Subsoil</i>	Compact grey-orange clay with occasional plough scarring and occasional stone drags
<i>Finds</i>	None

**Trench 7**

<i>Dimensions</i>	100 m by 2.0 m
<i>Excavated Orientation</i>	E to W
<i>Plough-soil</i>	0.30 m
<i>Depth of Excavation</i>	0.35 m in depth
<i>Significant Features</i>	None
<i>Other Features</i>	None
<i>Natural Subsoil</i>	Compact grey-orange clay with occasional plough scarring and occasional stone drags
<i>Finds</i>	None

**Trench 8**

<i>Dimensions</i>	50 m by 2.0 m
<i>Excavated Orientation</i>	NW to SE
<i>Plough-soil</i>	0.30 m - 0.35 m in depth
<i>Depth of Excavation</i>	0.35 m in depth
<i>Significant Features</i>	None
<i>Other Features</i>	Rubble drain at 35.0 m E-W
<i>Natural Subsoil</i>	Compact grey-orange clay with heavy plough scarring and occasional stone drags
<i>Finds</i>	None

**Trench 9**

<i>Dimensions</i>	50 m by 2.0 m
<i>Excavated Orientation</i>	NW to SE
<i>Plough-soil</i>	0.30 m - 0.35 m in depth
<i>Depth of Excavation</i>	0.35 m in depth
<i>Significant Features</i>	None
<i>Other Features</i>	None
<i>Natural Subsoil</i>	Compact grey-orange clay with heavy plough scarring and occasional stone drags
<i>Finds</i>	None

**Trench 10**

<i>Dimensions</i>	75 m by 2.0 m
<i>Excavated Orientation</i>	NE to SW
<i>Plough-soil</i>	0.35 m
<i>Depth of Excavation</i>	0.40 m
<i>Significant Features</i>	None
<i>Other Features</i>	Rig & furrow at 4.0 m intervals. Clay drain at 5.0 m intervals N-S
<i>Natural Subsoil</i>	Compact grey-orange clay with heavy plough scarring and occasional stone drags
<i>Finds</i>	None

**Trench 11**

<i>Dimensions</i>	50 m by 2.0 m
<i>Excavated Orientation</i>	NE to SW
<i>Plough-soil</i>	0.40 m
<i>Depth of Excavation</i>	0.45 m
<i>Significant Features</i>	None
<i>Other Features</i>	Rig and furrow at 4.0 m intervals. Rubble drain at 6.0 m N-S. Tile drains at 8.0 m then 4.0 m intervals N-S
<i>Natural Subsoil</i>	Compact grey-orange clay with heavy plough scarring and occasional stone drags
<i>Finds</i>	None

**Trench 12**

<i>Dimensions</i>	50 m by 2.0 m
<i>Excavated Orientation</i>	NW to SE
<i>Plough-soil</i>	0.30 m - 0.35 m
<i>Depth of Excavation</i>	0.40 m
<i>Significant Features</i>	None
<i>Other Features</i>	None
<i>Natural Subsoil</i>	Compact orange brown clay with heavy plough scarring and occasional stone drags
<i>Finds</i>	None

**Trench 13**

<i>Dimensions</i>	50 m by 2.0 m
<i>Excavated Orientation</i>	NW to SE
<i>Plough-soil</i>	0.30 m - 0.35 m in depth
<i>Depth of Excavation</i>	0.35 m in depth
<i>Significant Features</i>	None
<i>Other Features</i>	Rubble drain at 35.0 m E-W
<i>Natural Subsoil</i>	Compact grey-orange clay with heavy plough scarring and occasional stone drags
<i>Finds</i>	None

**Trench 14**

<i>Dimensions</i>	50 m by 2.0 m
<i>Excavated Orientation</i>	NE to SW
<i>Plough-soil</i>	0.40 m
<i>Colluvium</i>	0.10 m
<i>Depth of Excavation</i>	0.45 m – 0.50 m
<i>Significant Features</i>	None
<i>Other Features</i>	Rubble drain at 35.0 m E-W
<i>Natural Subsoil</i>	Compact grey-orange clay with heavy plough scarring and occasional stone drags
<i>Finds</i>	None

**Trench 15**

<i>Dimensions</i>	50 m by 2.0 m
<i>Excavated Orientation</i>	E to W
<i>Plough-soil</i>	0.20 m
<i>Depth of Excavation</i>	0.25 m in depth
<i>Significant Features</i>	None
<i>Other Features</i>	None
<i>Natural Subsoil</i>	Compact grey-orange clay with heavy plough scarring and occasional stone drags
<i>Finds</i>	None

**Trench 16**

<i>Dimensions</i>	50 m by 2.0 m
<i>Excavated Orientation</i>	NE to SW
<i>Plough-soil</i>	0.35 m
<i>Depth of Excavation</i>	0.35 m
<i>Significant Features</i>	None
<i>Other Features</i>	None
<i>Natural Subsoil</i>	Compact grey-orange clay with heavy plough scarring and occasional stone drags
<i>Finds</i>	None

**Trench 17**

<i>Dimensions</i>	50 m by 2.0 m
<i>Excavated Orientation</i>	E to W
<i>Plough-soil</i>	0.40 m
<i>Depth of Excavation</i>	0.40 m
<i>Significant Features</i>	None
<i>Other Features</i>	Tile drain at 6.0 m N-S. Rubble drain at 20.0 m N-S
<i>Natural Subsoil</i>	Compact grey-orange clay with heavy plough scarring and signs of iron panning
<i>Finds</i>	None

**Trench 18**

<i>Dimensions</i>	100 m by 2.0 m
<i>Excavated Orientation</i>	NW to SE
<i>Plough-soil</i>	0.40 m
<i>Colluvium</i>	0.20 m
<i>Depth of Excavation</i>	0.60 m in depth
<i>Significant Features</i>	None
<i>Other Features</i>	None
<i>Natural Subsoil</i>	Compact grey-orange clay with heavy plough scarring and signs of iron panning
<i>Finds</i>	None

**Trench 19**

<i>Dimensions</i>	50 m by 2.0 m
<i>Excavated Orientation</i>	SW to NE
<i>Plough-soil</i>	0.35 m
<i>Colluvium</i>	0.10 m
<i>Depth of Excavation</i>	0.45 m
<i>Significant Features</i>	None
<i>Other Features</i>	None
<i>Natural Subsoil</i>	Compact orange brown clay with heavy plough scarring
<i>Finds</i>	None

**Trench 20**

<i>Dimensions</i>	50 m by 2.0 m
<i>Excavated Orientation</i>	SE to NW
<i>Plough-soil</i>	0.40 m
<i>Depth of Excavation</i>	0.45 m
<i>Significant Features</i>	None
<i>Other Features</i>	Rubble drain at 42.0 m N-S
<i>Natural Subsoil</i>	Compact orange brown clay with heavy plough scarring
<i>Finds</i>	None

**Trench 21**

<i>Dimensions</i>	50 m by 2.0 m
<i>Excavated Orientation</i>	N to S
<i>Plough-soil</i>	0.35 m
<i>Depth of Excavation</i>	0.45 m
<i>Significant Features</i>	None
<i>Other Features</i>	Rig and furrow at 4.0 m intervals
<i>Natural Subsoil</i>	Compact orange brown clay with heavy plough scarring
<i>Finds</i>	None

**Trench 22**

<i>Dimensions</i>	50 m by 2.0 m
<i>Excavated Orientation</i>	E to W
<i>Plough-soil</i>	0.40 m
<i>Depth of Excavation</i>	0.45 m
<i>Significant Features</i>	None
<i>Other Features</i>	Tile drain at 3.0 m N-S
<i>Natural Subsoil</i>	Compact orange brown clay with heavy plough scarring
<i>Finds</i>	None

**Trench 23**

<i>Dimensions</i>	50 m by 2.0 m
<i>Excavated Orientation</i>	S to N
<i>Plough-soil</i>	0.35 m
<i>Depth of Excavation</i>	0.40 m
<i>Significant Features</i>	None
<i>Other Features</i>	None
<i>Natural Subsoil</i>	Compact orange brown clay with heavy plough scarring
<i>Finds</i>	None

**Trench 24**

<i>Dimensions</i>	50 m by 2.0 m
<i>Excavated Orientation</i>	E to W
<i>Plough-soil</i>	0.35 m
<i>Depth of Excavation</i>	0.40 m
<i>Significant Features</i>	None
<i>Other Features</i>	None
<i>Natural Subsoil</i>	Compact orange brown clay with heavy plough scarring
<i>Finds</i>	None

**Trench 25**

<i>Dimensions</i>	50 m by 2.0 m
<i>Excavated Orientation</i>	SE to NW
<i>Plough-soil</i>	0.30 m
<i>Depth of Excavation</i>	0.35 m
<i>Significant Features</i>	None
<i>Other Features</i>	None
<i>Natural Subsoil</i>	Compact orange brown clay with heavy plough scarring
<i>Finds</i>	None

**Trench 26**

<i>Dimensions</i>	50 m by 2.0 m
<i>Excavated Orientation</i>	E to W

<i>Plough-soil</i>	0.40 m
<i>Depth of Excavation</i>	0.45 m
<i>Significant Features</i>	None
<i>Other Features</i>	None
<i>Natural Subsoil</i>	Compact orange brown clay with heavy plough scarring
<i>Finds</i>	None

**Trench 27**

<i>Dimensions</i>	50 m by 2.0 m
<i>Excavated Orientation</i>	NE to SW
<i>Plough-soil</i>	0.32 m
<i>Depth of Excavation</i>	0.35 m
<i>Significant Features</i>	None
<i>Other Features</i>	None
<i>Natural Subsoil</i>	Compact orange brown clay with heavy plough scarring
<i>Finds</i>	None

**Trench 28**

<i>Dimensions</i>	50 m by 2.0 m
<i>Excavated Orientation</i>	NE to SW
<i>Plough-soil</i>	0.35 m
<i>Depth of Excavation</i>	0.40 m
<i>Significant Features</i>	None
<i>Other Features</i>	None
<i>Natural Subsoil</i>	Compact orange brown clay with heavy plough scarring
<i>Finds</i>	None

**Trench 29**

<i>Dimensions</i>	50 m by 2.0 m
<i>Excavated Orientation</i>	NW to SE
<i>Plough-soil</i>	0.35 m
<i>Depth of Excavation</i>	0.40 m
<i>Significant Features</i>	None
<i>Other Features</i>	Rubble drain at 52.0 m E-W
<i>Natural Subsoil</i>	Compact orange brown clay with heavy plough scarring
<i>Finds</i>	None

**Trench 30**

<i>Dimensions</i>	50 m by 2.0 m
<i>Excavated Orientation</i>	E to W
<i>Plough-soil</i>	0.40 m
<i>Depth of Excavation</i>	0.45 m
<i>Significant Features</i>	None
<i>Other Features</i>	Tile drain at 52.0 m NW-SE
<i>Natural Subsoil</i>	Compact orange brown clay with heavy plough scarring
<i>Finds</i>	None



**Trench 31**

<i>Dimensions</i>	50 m by 2.0 m
<i>Excavated Orientation</i>	E to W
<i>Plough-soil</i>	0.35 m
<i>Depth of Excavation</i>	0.40 m
<i>Significant Features</i>	None
<i>Other Features</i>	Tile drain at 5.0 m NW-SE
<i>Natural Subsoil</i>	Compact orange brown clay with heavy plough scarring
<i>Finds</i>	None

**Trench 32**

<i>Dimensions</i>	50 m by 2.0 m
<i>Excavated Orientation</i>	SW to NE
<i>Plough-soil</i>	0.35 m
<i>Depth of Excavation</i>	0.40 m
<i>Significant Features</i>	None
<i>Other Features</i>	None
<i>Natural Subsoil</i>	Compact orange brown clay with heavy plough scarring
<i>Finds</i>	None

**Trench 33**

<i>Dimensions</i>	50 m by 2.0 m
<i>Excavated Orientation</i>	NW to SW
<i>Plough-soil</i>	0.30 m
<i>Depth of Excavation</i>	0.35 m
<i>Significant Features</i>	None
<i>Other Features</i>	None
<i>Natural Subsoil</i>	Compact orange brown clay with heavy plough scarring
<i>Finds</i>	None

**Trench 34**

<i>Dimensions</i>	50 m by 2.0 m
<i>Excavated Orientation</i>	NW to SE
<i>Plough-soil</i>	0.35 m
<i>Depth of Excavation</i>	0.40 m
<i>Significant Features</i>	None
<i>Other Features</i>	Tile drain at 0.0m NW-SE
<i>Natural Subsoil</i>	Compact orange brown clay with heavy plough scarring
<i>Finds</i>	None

**Trench 35**

<i>Dimensions</i>	50 m by 2.0 m
<i>Excavated Orientation</i>	W to E
<i>Plough-soil</i>	0.30 m
<i>Depth of Excavation</i>	0.35 m
<i>Significant Features</i>	None
<i>Other Features</i>	Tile drain at 6.0 m
<i>Natural Subsoil</i>	Compact orange brown clay with heavy plough scarring
<i>Finds</i>	None

**Trench 36**

<i>Dimensions</i>	50 m by 2.0 m
<i>Excavated Orientation</i>	W to E
<i>Plough-soil</i>	0.35 m
<i>Depth of Excavation</i>	0.40 m
<i>Significant Features</i>	None
<i>Other Features</i>	None
<i>Natural Subsoil</i>	Compact orange brown clay with heavy plough scarring
<i>Finds</i>	None

**APPENDIX 2: Photographic Register**

## Digital Photographs

Frame	Description	From
1	Registration shot	-
2	Trench 1 post-excavation shot	SW
3	Trench 2 post-excavation shot	SW
4	Trench 3 post-excavation shot	S
5	Trench 4 post-excavation shot	W
6	Trench 5 post-excavation shot	SE
7	Trench 6 post-excavation shot	S
8	Trench 7 post-excavation shot	S
9	Position of geophysical linear in Trench 6 showing change in natural	SE
10	Position of geophysical structure in Trench 6 showing natural clay	S
11	Position of geophysical linear in Trench 5 showing change in natural	S
12-13	Position of geophysical linears in Trench 4 showing colluvial filled hollows	var
14	Position of geophysical pit in Trench 2 showing change in natural	E
15	Position of geophysical linear in Trench 1 showing change in natural	NE
16	Position of geophysical pit in Trench 1 showing change in natural	SW
17	Trench 8 post-excavation shot	SE
18	Trench 9 post-excavation shot	NW
19	Trench 10 post-excavation shot	SW
20	Trench 11 post-excavation shot	SW
21	Trench 12 post-excavation shot	SW
22	Trench 13 post-excavation shot	SW
23	Trench 14 post-excavation shot	SW
24	Trench 15 post-excavation shot	W

25	Trench 16 post-excavation shot	W
26	Trench 17 post-excavation shot	W
27	Trench 18 post-excavation shot	SE
28	Trench 19 post-excavation shot	NE
29	Trench 20 post-excavation shot	NW
30	Trench 21 post-excavation shot	N
31	Trench 22 post-excavation shot	W
32	Trench 23 post-excavation shot	S
33	Trench 24 post-excavation shot	W
34	Trench 25 post-excavation shot	NW
35	Trench 26 post-excavation shot	W
36	Trench 27 post-excavation shot	SW
37	Trench 28 post-excavation shot	SW
38	Trench 29 post-excavation shot	SE
39	Trench 30 post-excavation shot	W
40	Trench 31 post-excavation shot	E
41	Trench 32 post-excavation shot	SE
42	Trench 33 post-excavation shot	SE
43	Trench 34 post-excavation shot	SE
44	Trench 35 post-excavation shot	E
45	Trench 36 post-excavation shot	E
46	Trench 37 post-excavation shot	N
47	Trench 38 post-excavation shot	W
48	Trench 39 post-excavation shot	N
49	Trench 40 post-excavation shot	N

**APPENDIX 4: 'Discovery and Excavation in Scotland' Report**

<b>LOCAL AUTHORITY:</b>	Perth & Kinross Council
<b>PROJECT TITLE/SITE NAME</b>	Jamesfield Farm, Newburgh, Perth & Kinross
<b>PROJECT CODE:</b>	AOC 23562
<b>PARISH:</b>	Abernethy
<b>NAME OF CONTRIBUTOR:</b>	Rob Engl
<b>NAME OF ORGANISATION:</b>	AOC Archaeology Group
<b>TYPE(S) OF PROJECT:</b>	Archaeological Evaluation
<b>NMRS NO(S)</b>	N/A
<b>SITE/MONUMENT TYPE(S):</b>	N/A
<b>SIGNIFICANT FINDS:</b>	N/A
<b>NGR (2 letters, 6 figures)</b>	NO 20050 17956
<b>START DATE</b> (this season)	3 <sup>rd</sup> October 2016
<b>END DATE</b> (this season)	7 <sup>th</sup> October 2016
<b>PREVIOUS WORK</b> (incl. DES ref.)	None
<b>MAIN (NARRATIVE) DESCRIPTION:</b> (May include information from other fields)	<p>An archaeological evaluation was undertaken in relation to the construction of a proposed Solar Farm development at Jamesfield Farm, Newburgh, Perth &amp; Kinross (NGR: NO 20050 17956)</p> <p>The evaluation required a 5% trenching sample of the proposed 8.5 hectare development area (2,125 linear metres). The development is situated on open, farmland close to the confluence of the River Earn and River Tay.</p> <p>Trenching revealed drift geology of raised marine and estuarine clays, sands and gravels. Numerous rubble and tile drains were observed running downslope north to south. These drains were set at 5.0 m intervals. The natural was overlain by a compact, improved plough soil which ranged from 0.20 to 0.40 m in depth.</p> <p>A geophysical survey undertaken prior to the evaluation had revealed a promising suite of possible features. However the evaluation revealed these to be related to changes in natural and modern drainage.</p> <p>The only archaeologically significant remains recorded during the evaluation were the ephemeral traces of 18th/19th century broad rig and furrow agriculture which ran across the site aligned north-east to south-west. Occasional sherds of 19th century ceramics were observed within the plough soil.</p>

	<p>A previous walk over of the site had produced a small assemblage of possible Roman <i>ibrex</i> terracotta roof tile. A few small pieces of this material including a pan tile were recovered from the plough soil during the evaluation.</p> <p>Given the lack of significant archaeological remains and the level of recording undertaken no further works are considered necessary. This will be determined by Perth and Kinross Heritage Trust (PKHT) on behalf of Perth &amp; Kinross Council.</p>
<b>PROPOSED FUTURE WORK:</b>	None
<b>CAPTION(S) FOR ILLUSTRS:</b>	---
<b>SPONSOR OR FUNDING BODY:</b>	
<b>ADDRESS OF MAIN CONTRIBUTOR:</b>	Edgefield Road Industrial Estate, Loanhead, Midlothian, EH20 9SY
<b>EMAIL ADDRESS:</b>	admin@aocarchaeology.com
<b>ARCHIVE LOCATION</b> (intended/deposited)	Archive to be deposited in NMRS



**AOC Archaeology Group**, Edgefield Industrial Estate, Edgefield Road, Loanhead EH20 9SY  
tel: 0131 440 3593 | fax: 0131 440 3422 | e-mail: [admin@aocarchaeology.com](mailto:admin@aocarchaeology.com)

[www.aocarchaeology.com](http://www.aocarchaeology.com)