

# Fasque House Estate, Aberdeenshire: Archaeological Evaluation (Zones 3 - 6 & 8) Report

AOC 22736

11<sup>th</sup> November 2016



ARCHAEOLOGY

HERITAGE

CONSERVATION

## Fasque House Estate, Aberdeenshire: Archaeological Evaluation (Zones 3 - 6 & 8) Report

---

**On Behalf of:** Fasque House Properties Limited  
Fasque House  
Fasque House Estate  
Fettercairn  
Laurencekirk  
Aberdeenshire  
AB30 1DN

**National Grid Reference (NGR):** NO 64640 75925 (centre of Home Farm)

**AOC Project No:** 22736

**OASIS Entry No:** 268404

**Prepared by:** Kevin Paton

**Date of Fieldwork:** 10<sup>th</sup> October to 28<sup>th</sup> October 2016

**Date of Report:** 30<sup>th</sup> November 2016

This document has been prepared in accordance with AOC standard operating procedures.

**Author:** Kevin Paton

**Date:** 11<sup>th</sup> November 2016

**Approved by:** Martin Cook

**Date:** 11<sup>th</sup> November 2016

**Draft/Final Report Stage:** Draft

**Date:** 30<sup>th</sup> November 2016

**Enquiries to:** AOC Archaeology Group  
Edgefield Industrial Estate  
Edgefield Road  
Loanhead  
EH20 9SY

Tel. 0131 440 3593  
Fax. 0131 440 3422  
e-mail. [edinburgh@aocarchaeology.com](mailto:edinburgh@aocarchaeology.com)



## Contents

	Page
List of Figures.....	2
List of Plates .....	2
List of Appendices.....	2
<b>SUMMARY.....</b>	<b>3</b>
<b>1 INTRODUCTION .....</b>	<b>4</b>
1.1 Background .....	4
1.2 Site Location.....	4
1.3 Historical Background .....	4
<b>2 OBJECTIVES.....</b>	<b>6</b>
<b>3 METHODOLOGY.....</b>	<b>6</b>
<b>4 RESULTS.....</b>	<b>7</b>
4.1 Introduction .....	7
4.2 Zones 3 & 4 .....	7
4.3 Zones 5 & 6 .....	8
4.4 Zone 8 .....	10
<b>5 DISCUSSION.....</b>	<b>12</b>
<b>6 CONCLUSION AND RECOMMENDATIONS.....</b>	<b>12</b>
<b>7 REFERENCES .....</b>	<b>13</b>
7.1 Bibliographic References.....	13
7.2 Cartographic References.....	13
<b>APPENDIX 1: EVALUATION TRENCH DESCRIPTIONS.....</b>	<b>15</b>
<b>APPENDIX 2: CONTEXT REGISTER .....</b>	<b>47</b>
<b>APPENDIX 3: PHOTOGRAPHIC REGISTERS .....</b>	<b>50</b>
<b>APPENDIX 4: DRAWING REGISTER.....</b>	<b>54</b>
<b>APPENDIX 5: SAMPLES REGISTER .....</b>	<b>54</b>
<b>APPENDIX 6: 'DISCOVERY AND EXCAVATION IN SCOTLAND' REPORT .....</b>	<b>55</b>

## List of Figures

- Figure 1: Site Location
- Figure 2: Extract from the Ordnance Survey, 1868
- Figure 3: Extract from the Ordnance Survey, 1904
- Figure 4: Extract from the Ordnance Survey, 1927
- Figure 5: Development zone locations
- Figure 6: Trench locations in Zones 3 & 4
- Figure 7: Trench locations in Zones 5 & 6
- Figure 8: Close up view of features in Zones 5 & 6
- Figure 9: Section drawings of Zone 5, 6 & 8 features
- Figure 10: Trench locations in Zone 8

## List of Plates

- Plate 1: General view of Trench 18 in Zone 3
- Plate 2: General view of ditch [4501]
- Plate 3: Ring ditch [8503] and other features in T117
- Plate 4: General view of post holes in Trench 103
- Plate 5: General view of pit [12901]
- Plate 6: General view of base [14501] and ditch [14502]

## List of Appendices

- Appendix 1: Evaluation Trench Descriptions
- Appendix 2: Context Register
- Appendix 3: Photographic Register
- Appendix 4: Drawing Register
- Appendix 5: Samples Register
- Appendix 6: Discovery and Excavation in Scotland Report



## SUMMARY

---

An archaeological evaluation was undertaken by AOC Archaeology Group on land due for residential development within Fasque House Estate, Fettercairn, Aberdeenshire.

The evaluation took place throughout five zones at the north edge of the Fasque House Estate. Zone 3 and 4 contained no significant archaeology. Zones 5, 6 & 8 all contained post medieval features, mainly pits, but with a probable field boundary also present in Zone 5, and a stone platform and ditch in Zone 8.

Zone 6 was revealed to contain two areas of possible prehistoric activity that most likely represents two possible round houses. One of these houses was situated on a high point at the western edge of the zone, with the other in a lower area approximately 50 m to the east. The upper house consisted of a ring ditch with several associated pits around the outside. The lower house consisted of an arc of probable post holes with other pit features nearby.

If these features cannot be preserved in-situ, it is recommended that further archaeological work be conducted within Zone 6. The details of further work will require the approval and agreement of Aberdeenshire Council who are advised by Aberdeenshire Council Archaeology Service (ACAS).

## 1 INTRODUCTION

### 1.1 Background

1.1.1 An archaeological evaluation was required by Fasque House Properties Ltd., on land proposed for development within Fasque House Estate, Aberdeenshire. The scope of the works was determined by Aberdeenshire Council as advised on archaeological matters by the Aberdeenshire Council Archaeology Service (ACAS). The works were conducted according to the terms of a *Written Scheme of Investigation* (AOC 2016), approved on behalf of Aberdeenshire Council by ACAS and in accordance with *Scottish Planning Policy* (Scottish Government 2014) and *PAN 2/2011 Planning And Archaeology* (Scottish Government 2011).

### 1.2 Site Location

1.2.1 Fasque House Estate is located to the north-west of the village of Fettercairn in Aberdeenshire. The evaluation areas are to the N, NW, and NE of the estate centred around Home Farm (NGR: NO 64640 75925; Figure 1). The different zones comprise mainly agricultural ground currently used for pastoral and arable farming, with the area around Home Farm also comprising areas of working farm yards.

### 1.3 Historical Background

#### 1.3.1 Prehistoric

A cropmark to the south of Bogendollo farm indicates the presence of prehistoric features, including a souterrain and a possible circular enclosure, which have been interpreted as a possible unenclosed prehistoric settlement. Rectangular and circular cropmarks including at least two ring ditches are located to the east of Mains of Fasque and likely date to the Iron Age. A few Bronze Age finds have also been located in the area, including a Late Bronze Age socketed axe head recovered in the late 19<sup>th</sup> century.

The NMRS has identified that a sandy mound measuring 17m in diameter and 2m in height in the grounds of Fettercairn House was a barrow, and a base and partial body of a short-necked beaker was recovered from it in the 1940s.

#### 1.3.2 Early Medieval

Several sites dating to the medieval period have been identified in the area. A house near Craigmoston was noted in a list of castles, fortalices and manor houses erected between ca. 1052 and ca. 1707 in the Grampian Region. A bronze vessel, likely dating to the 11<sup>th</sup> Century, was also found in the garden at Craigmoston Cottage (Hunter 2000). Medieval agricultural remains also survive in the form of rig and furrow to the north-west of Home Farm, Amborrow Farmstead and along the eastern bank of the Burn of Garrol.

To the north of the Estate are the remains of Kincardine Castle Deer Dyke, which have been described as the most outstanding to survive in Scotland. These may have been laid out by William the Lion in the late 12<sup>th</sup> and early 13<sup>th</sup> Century and were extended by Alexander III in 1266. Where the dyke survives, it generally measures up to 4.5m in width with external ditches being 3.5m wide. Where there are internal ditches these generally measure 2m wide. A wooden stockade probably stood on the top to keep the deer within the park.

#### 1.3.3 Late Medieval

The first known records relating to Fasque House Estate as we know it today date to 1433 when Sir John Ramasy, Knight of Balmain and Fasque was created a Lord of Parliament. The original house is said to have stood to the north-west of the current house and the estate was greatly improved in the early 18<sup>th</sup> century by Sir Alexander Ramsay.

#### 1.3.4 18<sup>th</sup> – 19<sup>th</sup> century

By the end of the 18<sup>th</sup> century the estate had passed to Alexander Burnet who took the name Ramsay. Burnet began work on the new house in the early 19<sup>th</sup> century although he died before seeing it completed. Many of the designed landscape features which remain on site and form part of the Category Group A Listing also date to the turn of the century.

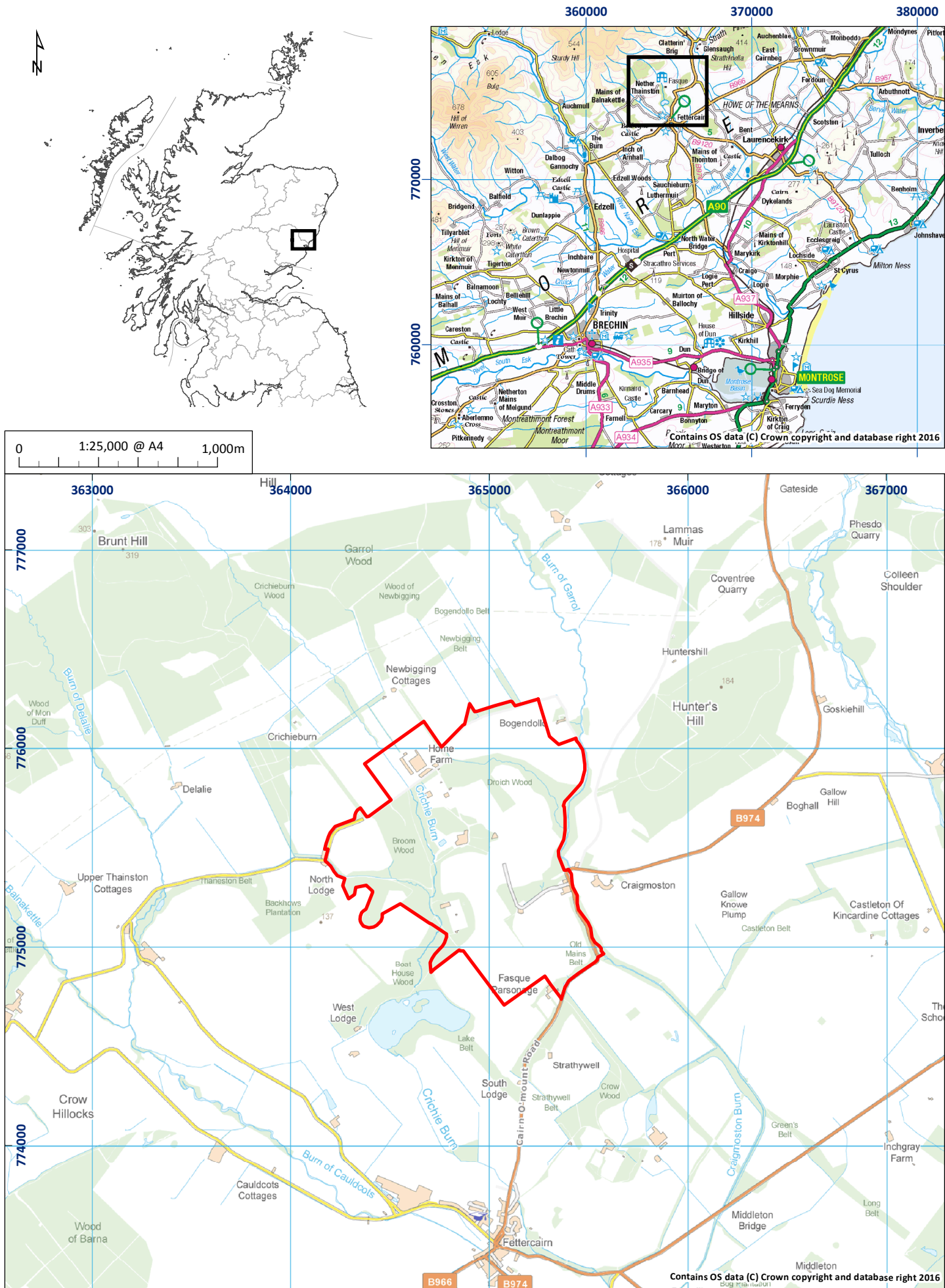


Figure 1: Site location plan

The estate was sold in the late 1820s to John Gladstone, a Scottish born merchant, who made his fortune in Liverpool in the corn, cotton and sugar trade. Gladstone built St Andrew's Episcopal Church to the east of the mansion house in the late 1840s.

The history and development of Home Farm can be seen by looking at the detailed Ordnance Survey maps of 1868, 1904 and 1927 respectively (Figures 2 – 4). The 1868 map identifies Home Farm as a planned steading centred on linear barns set around a square courtyard with some ancillary barns to the south-east side and a large reservoir to the north (Figure 2). A farmhouse is also located to the east. By the beginning of the 20<sup>th</sup> century, the 1904 map shows that the central courtyard has largely been filled in, probably to create additional cow byre space, and both the farmhouse and reservoir have been removed. Three neat linear barns have been constructed to the north in its place and a longer L-shaped barn added to the north-west of the main steading. A smaller reservoir has also now been created to the north-west of the site. The 1927 map shows few changes from the 1904 map, although there are now two 'Dams' (reservoirs) to the north-west of the site.



Figure 2: Extract from the Ordnance Survey, 1868



Figure 3: Extract from the Ordnance Survey, 1904



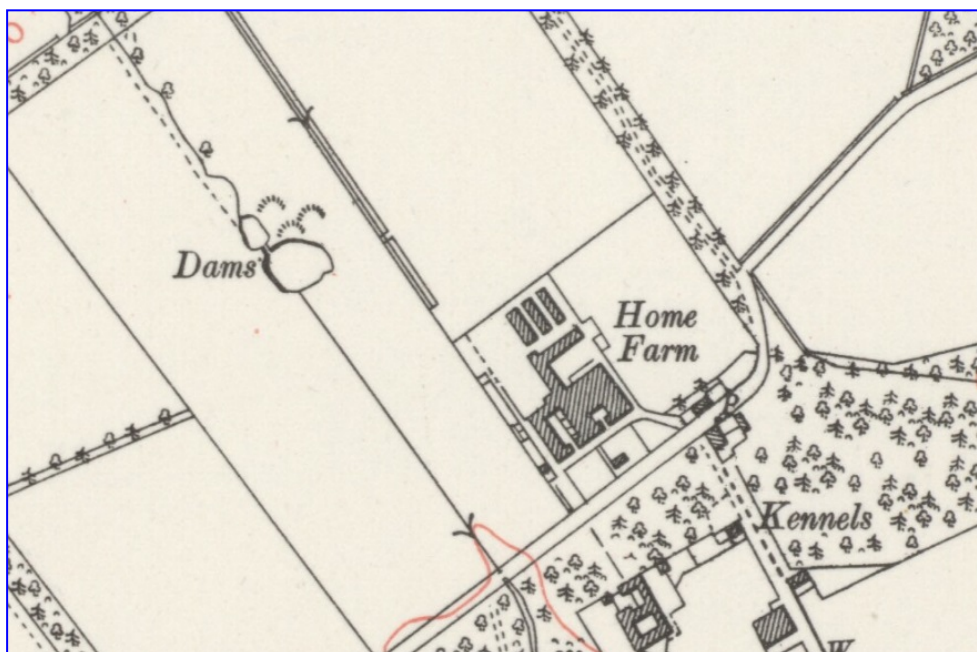


Figure 4: Extract from the Ordnance Survey, 1927

## 2 OBJECTIVES

2.1 The objectives of the archaeological evaluation were:

- i) to determine and assess the character, extent, condition, quality, date and significance of any buried archaeological remains within the proposed development area through evaluation trenching;
- ii) to advise and implement an appropriate form of mitigation, such as excavation, post-excavation analyses and publication, given the infeasibility of preserving the archaeological material *in situ*, should significant archaeological remains be encountered.

## 3 METHODOLOGY

3.1 The evaluation consisted of 153 trenches excavated throughout the five zones utilising two 14 tonne tracked excavators equipped with bladed ditching buckets operating under the constant supervision of an experienced field archaeologist. Each trench was recorded using AOC *pro forma* trench record sheets and any potential features investigated further to assess their character and date. All trenches were then surveyed in order to ascertain the exact location of any features revealed.

3.2 In all but Zone 5, the required amount of trenching stipulated for each area was unable to be met. The actual totals for each area were as follows:

Zone	Proposed linear metres required for 7% evaluation	Extra linear metres required for 10% evaluation	Linear Metres evaluated	Additional linear metres still to be done
3	1,050 m	N/A	710 m	0 m
4	1,362 m	N/A	935 m	0 m
5	2,135 m	N/A	2135 m	0 m
6	2453 m	1051 m	2665 m	839 m
8	1816.5 m	778.5 m	1841 m	0 m*

\*no further evaluation required due to service location

- 3.3 In Zones 3 & 4 this was due to a number of sheds and areas of hard standing around Home Farm that had not been accounted for in the excluded area. Furthermore, an overhead electric cable, a water pipe, the access track to the pig pens, a large drain, the slopes of Crichie Burn, and an area containing modern dumped material further reduced the available areas in these two zones.
- 3.4 In Zone 6, a large area to the S of the zone was covered in a barley crop that was providing cover for game birds. It was requested that this crop be left alone until the shooting season finishes at the end of January. In Zone 8, a water pipe was known to run close to the fence line to the N and W, but a probable BT cable was also found within this field that was 20 m from the fence in places.

## 4 RESULTS

### 4.1 Introduction

- 4.1.1 All archaeological works were conducted between the 10<sup>th</sup> October 2016 and the 28<sup>th</sup> October 2016. Weather conditions were generally fair throughout the course of the work conducted meaning that archaeological visibility was good.
- 4.1.2 The evaluation areas were split into five zones, Zones 3-6 & 8 (Figure 5). The various data gathered from the evaluation are presented as a series of appendices:

Appendix 1: Evaluation trench descriptions  
 Appendix 2: Context Register;  
 Appendix 3: Photographic Register;  
 Appendix 4: Drawing Register  
 Appendix 5: Samples Register  
 Appendix 6: *'Discovery and Excavation in Scotland'* entry

### 4.2 Zones 3 & 4

- 4.2.1 Zones 3 & 4 are situated to the N, E and W of Home Farm (Figure 6). Zone 3 consisted of four separate paddocks, all of which contained a mid greyish brown clay loam topsoil overlying a mainly sandy clay subsoil (Plate 1). Some rubble and ceramic tile drains were noted within a number of the trenches but no significant archaeological features or artefacts were revealed.
- 4.2.2 Zone 4 consisted of an area of dumped soil, rubble and modern rubbish material to the immediate S of the pond next to Home Farm, as well as a tended grass area, pig pens and part of a ploughed field. The topsoil varied from made ground to the E of the burn and a mid greyish brown clay loam to the W, with sandy clay subsoil throughout. The eastern half of Zone 4 had been heavily truncated by the farm activity. No significant archaeological features or artefacts were revealed.



Plate 1 : General view of Trench 18 in Zone 3

### 4.3 Zones 5 & 6

- 4.3.1 These zones are situated to the E of the farm and consisted of a green field for grazing (Zone 5) and a field containing an immature oil seed rape crop (Zone 6) (Figure 7). The topsoil in these fields was a dark reddish brown sandy clay loam overlying a mixture of orange sandy clay, very compact reddish brown clay, and some areas of gravel to the E edge. Plough scarring was evident on the higher points of both zones and some traces of furrows aligned N-S were also revealed.
- 4.3.2 Three features were revealed within Zone 5, focussed toward the eastern edge. A v-shaped ditch [4501] and an oval shaped pit [4801], are most likely related to post medieval activity, with the ditch potentially representing a field boundary that ran along the base of the slope (Plate 2). The third feature was a small charcoal rich deposit [4201] that was only 0.02 m thick but may represent an earlier deposit.
- 4.3.3 As for Zone 6, a number of probable prehistoric features were revealed on a ridge line at the W edge and in a small hollow approximately 50 m further E (Figure 8). The features found are most likely the remains of two prehistoric round houses. The first of these structures was revealed within trenches 85 and 117 consisting of a ring ditch [8503] enclosing an area approximately 6 m in diameter (Plate 3). The ditch was 0.86 m wide and up to 0.19 m deep with the southern extents very ephemeral and almost non-existent in places. Within the ditch there were two amorphous shaped pits [11707] and [11709] that contained charcoal rich deposits.
- 4.3.4 Out with the ditch there were several circular pits [8501], [11703], [11705], [11711], and [11713] that measured between 0.46 m and 1 m in diameter. All of these pit features contained various amounts of charcoal visible on the surface, with the most abundantly filled pit [11711] excavated to reveal the cut surviving to only 0.06 m in depth (Figure 9). Another pit [10301] was revealed approximately 10 m E of the ring ditch that was similar in shape to the others out with the structure, and with a similar depth to [11711].
- 4.3.5 Further along this trench, the southern edge of a second probable round house structure was revealed (Plate 4). This structure consisted of an arc of post holes [10303], [10305], [10307], and [10309] with other possible post holes recorded as pits [10311] and [10313]. They were all slightly oval shaped in plan measuring around 0.8 m by 0.5 m, and post holes [10303] and [10305] were seen to be intercutting. The post holes appeared to



be surrounding a possible early soil deposit [10315], but this may have been overburden left due to the slope of the hollow.

- 4.3.6 Other features close to this structure were right angled ditch [10316] and another pit [10318]. No further features were revealed within Trench 115 to the immediate S, or in Trench 121 to the N, although a wide furrow was present in Trench 121 that may have been masking further features.
- 4.3.7 Elsewhere within Zone 6, probable modern or post medieval pits [8701], [8801] and [8803] were also noted, that most likely relate to the furrow and drains present within the field.



Plate 2 - General view of ditch [4501]





Plate 3: Ring ditch [8503] and other features in T117



Plate 4 : General view of post holes in Trench 103

#### 4.4 Zone 8

- 4.4.1 This zone is situated to the W of the estate grounds and consisted of a grass field for grazing containing a dark brown sandy clay loam overlying a mainly pink clayey sand subsoil (Figure 10). The remains of a few furrows and the occasional rubble drain were revealed within this area representing post medieval agricultural activity.



4.4.2 Furthermore, two small circular pits [13201] and [13601] measuring around 0.3 m diameter were located near the southern edge of the area, with a large circular pit measuring 1.7 m by 1.51 m by 0.41 m and containing a large natural boulder to the N edge that all most likely represent post medieval activity (Plate 5).

4.4.3 The final features in this area were rectangular stone base [14501] and associated ditch [14502] that were situated near the top of the hill within this zone (Plate 6). The stone base sat within the topsoil and measured 2.25 m long by 1.25 m wide, aligned NW-SE and possibly continuing NW out of the trench. Ditch [14502] ran along the NE edge of the base and continued S for 5 m (+), continuing out of the trench. The ditch was 1.4 m wide and 0.2 m deep with moderately sloping sides. It most likely acted as a drain for activities around the stone base and was filled with a dark brown sandy clay, similar to the topsoil.



Plate 5: General view of pit [12901]



Plate 6 : General view of base [14501] and ditch [14502]

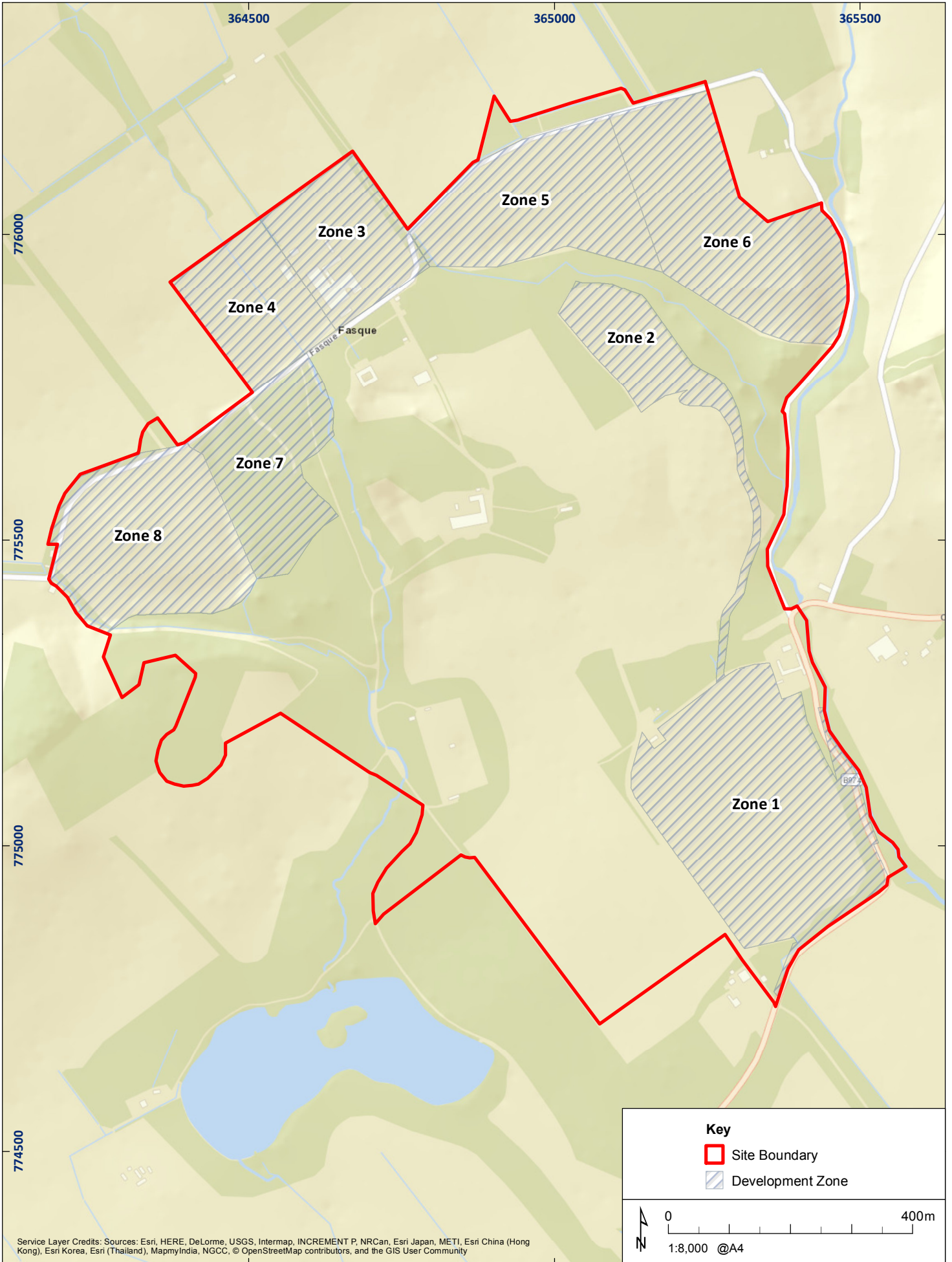


Figure 5: Development zone locations

01/22736/REP/05/02





01/22736/REP/06/02

Figure 6: Trench locations in Zones 3 & 4



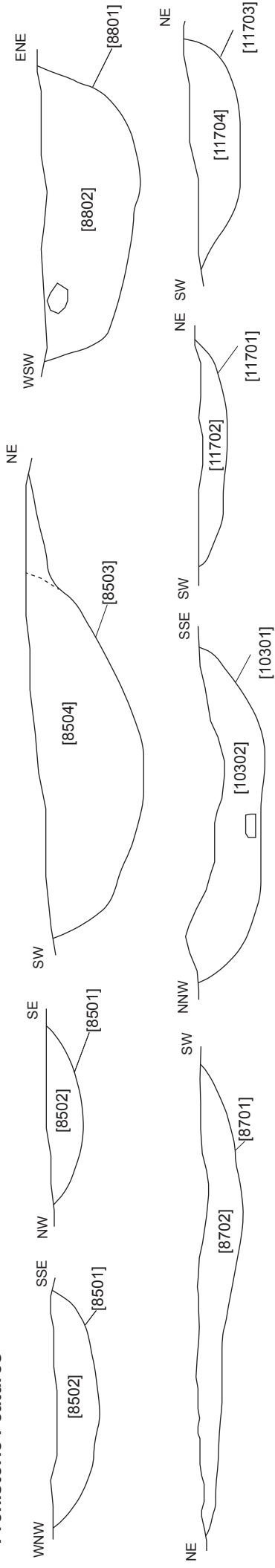
Figure 7: Trench locations in Zones 5 & 6



Figure 8: Detail view of features within Zone 6



### Prehistoric Features



### Post-Medieval Features

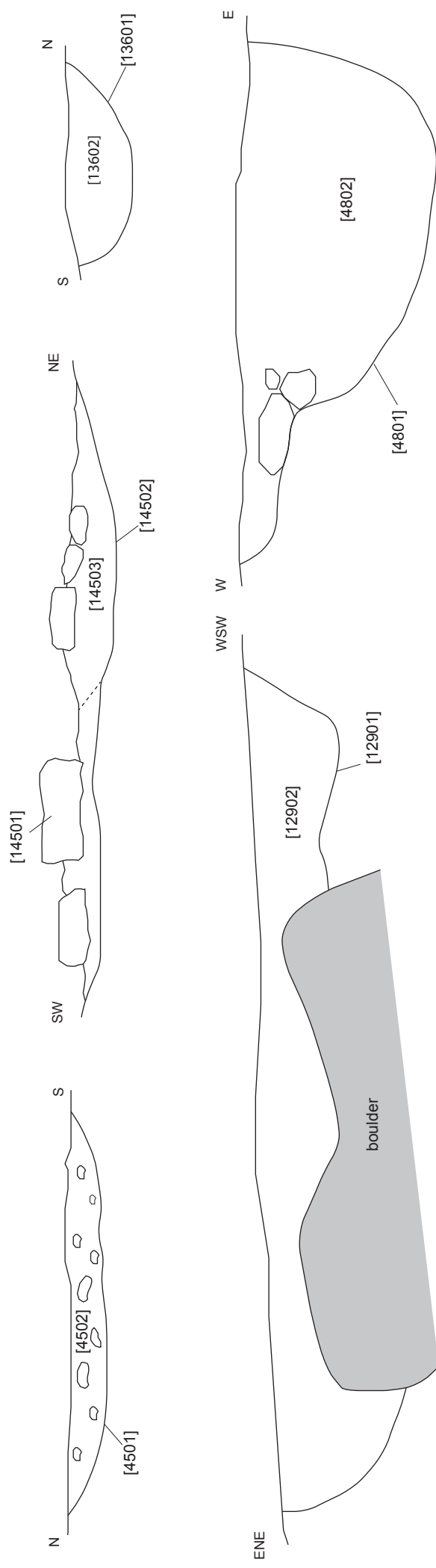


Figure 9: Section drawings of Zone 5, 6 & 8 features

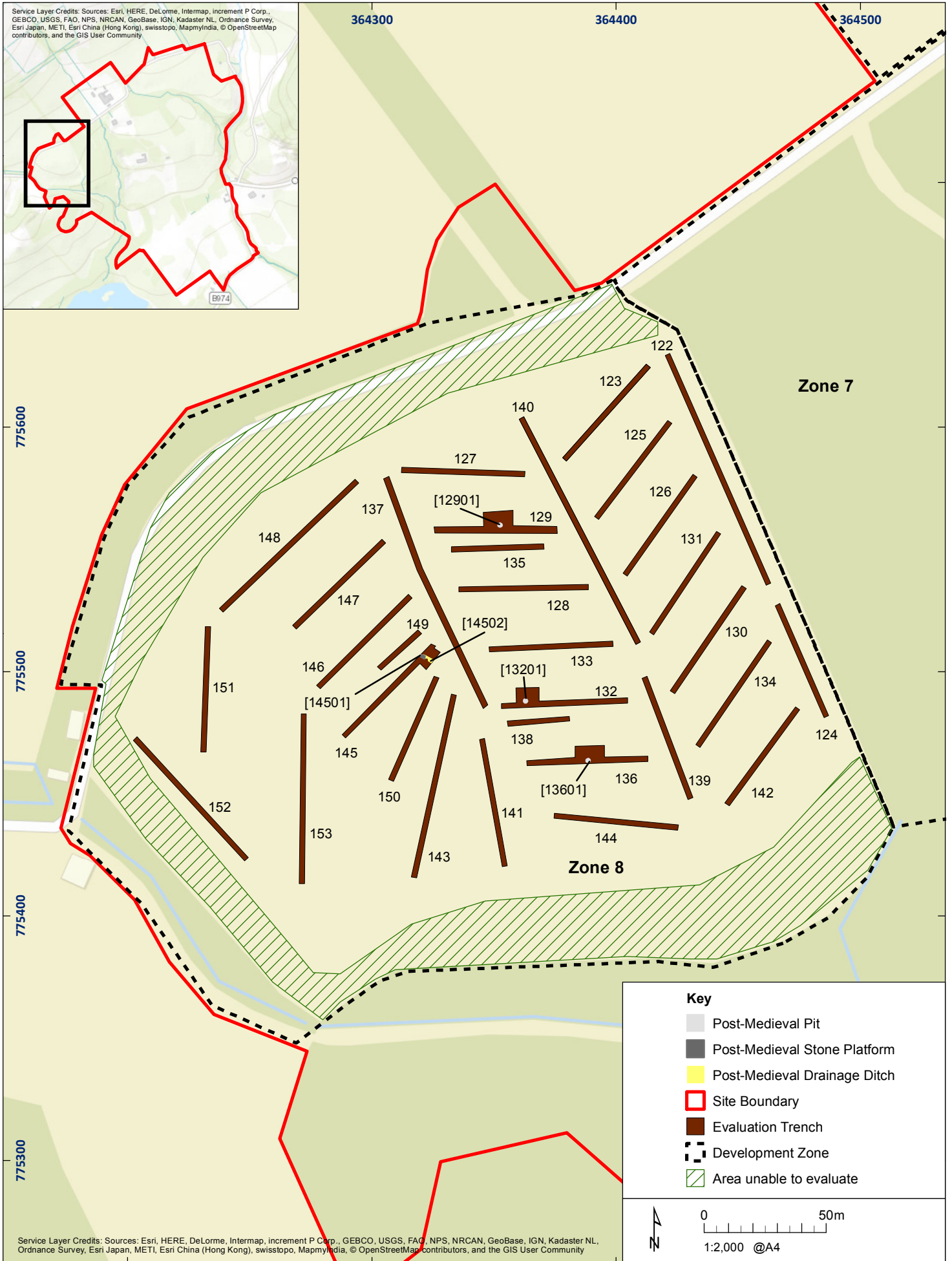


Figure 10: Trench locations in Zone 8

01/22736/REP/10/02

## 5 DISCUSSION

- 5.1 The features revealed within Zone 6 of the evaluation area have confirmed the presence of a prehistoric settlement that was previously known from aerial photography (NMRS No. NO67NE 36). The Aberdeenshire Council Historic Environment Record states:

*'The crop mark of a souterrain is visible in an arable field. About c15m to the east of it there is a slight trace of either another souterrain or part of a possible circular enclosure. The faint trace of a circular enclosure lies c20m to the north-west. There may also be associated features which are not visible at present. These probably represent the remains of a small unenclosed settlement.'*

- 5.2 The ring ditch [8503] on the higher ground, and the features within the lower area most likely did not show up on the aerial photographs, indicating that the settlement may be larger than previously thought. In terms of dating the features and the settlement, a Late Bronze Age socketed axe head found next to Bogendollo farm from the 19<sup>th</sup> century may give an indication of when the site was being inhabited. However, souterrains and ring ditch houses are more common of the Iron Age (Cook forthcoming), possibly indicating the continual use of the area as a settlement over a prolonged period of time.
- 5.3 The area is ideal for a settlement location due to the presence of two small water courses to the immediate south and east. The free draining clayey sands and gravels in this corner of the zone would have made this area the only part of the field that could have sustained a settlement as the compact clays to the north and west would have made excavation of post holes and ditches an arduous if not impossible task.

## 6 CONCLUSION AND RECOMMENDATIONS

- 6.1 The archaeological evaluation has revealed the survival of post medieval features within Zone 5 & 8 of the development area, and significant prehistoric archaeology within Zone 6. These findings would necessitate further archaeological works within Zone 8 if the areas containing the features could not be avoided by the development. Furthermore, any development in close proximity to the features found within Zone 6 would also require additional fieldwork that could take the form of a monitored topsoil strip prior to the development taking place or a watching brief on all ground breaking works in the southern half of Zone 6.
- 6.2 This recommendation will require approval of Aberdeenshire Council Archaeology Service who advise Aberdeenshire Council on archaeological matters.

## 7 REFERENCES

### 7.1 Bibliographic References

AOC 2016 *Fasque Estate, Aberdeenshire: Archaeological Evaluation (Zones 1-8) & Historic Building Recording (Home Farm) Written Scheme of Investigation*

Cook, M and Engl R Forthcoming Excavations at *Grantown Road, Forres. Scottish Archaeological Internet Report.*

Scottish Government 2014 Scottish Planning Policy.

Scottish Government 2010 PAN 2/2011 Planning & Archaeology.

### 7.2 Cartographic References

1868 Ordnance Survey *Kincardineshire, Sheet XIX*

1904 Ordnance Survey *Kincardineshire Sheet XXIII.NE*

1927 Ordnance Survey *Kincardineshire Sheet XXIII.NE*

---

**Fasque House Estate, Aberdeenshire:  
Archaeological Evaluation (Zones 3-6 & 8)**

**Report**

**Section 2: Appendices**

## APPENDIX 1: EVALUATION TRENCH DESCRIPTIONS

### Trench 1

<i>Location</i>	Zone 4
<i>Dimensions</i>	28 m by 2 m
<i>Excavated Area</i>	56 m <sup>2</sup>
<i>Excavated Orientation</i>	N to S
<i>Soil make-up</i>	Made ground – rubble and demolition material – 0.05 m to 0.54 m
<i>Natural Subsoil</i>	Light brown sandy gravel until 11 m then orange clay
<i>Significant Features</i>	None
<i>Other Features</i>	Modern culvert at 22.4 m aligned E-W
<i>Finds</i>	None

### Trench 2

<i>Location</i>	Zone 4
<i>Dimensions</i>	22 m by 2 m
<i>Excavated Area</i>	44 m <sup>2</sup>
<i>Excavated Orientation</i>	NW to SE
<i>Soil make-up</i>	Dumped soils – dark brown clay loam with wood, stone, rubble and modern rubbish – 0.72 m to 1.05 m
<i>Natural Subsoil</i>	Grey boulder clay
<i>Significant Features</i>	None
<i>Other Features</i>	None
<i>Finds</i>	None

### Trench 3

<i>Location</i>	Zone 4
<i>Dimensions</i>	25 m by 2 m
<i>Excavated Area</i>	50 m <sup>2</sup>
<i>Excavated Orientation</i>	SW to NE
<i>Soil make-up</i>	Made ground – rubble and demolition material – 0.42 m to 0.8 m
<i>Natural Subsoil</i>	Light brown sandy gravel until 13 m then orange clay
<i>Significant Features</i>	None
<i>Other Features</i>	None
<i>Finds</i>	None

### Trench 4

<i>Location</i>	Zone 4
<i>Dimensions</i>	17 m by 2 m
<i>Excavated Area</i>	34 m <sup>2</sup>
<i>Excavated Orientation</i>	S to N
<i>Soil make-up</i>	Dumped soils – dark brown clay loam with wood, stone, rubble and modern rubbish – 0.72 m to 1.05 m
<i>Natural Subsoil</i>	Mid brown clay and stone until 5 m then grey clay and stone
<i>Significant Features</i>	None
<i>Other Features</i>	None
<i>Finds</i>	None

### Trench 5

<i>Location</i>	Zone 4
<i>Dimensions</i>	23 m by 2 m
<i>Excavated Area</i>	46 m <sup>2</sup>
<i>Excavated Orientation</i>	NNE to SSW
<i>Soil make-up</i>	Made ground – rubble and demolition material – 0.74 m to 1.05 m
<i>Natural Subsoil</i>	Light brown sandy gravel then orange clay
<i>Significant Features</i>	None
<i>Other Features</i>	Plastic drain at 0 m then NW-SE
<i>Finds</i>	None

**Trench 6**

<i>Location</i>	Zone 4
<i>Dimensions</i>	30 m by 2 m
<i>Excavated Area</i>	60 m <sup>2</sup>
<i>Excavated Orientation</i>	N to S
<i>Soil make-up</i>	Topsoil – compact dark brown sandy clay loam – 0.15 m; Hardcore – orange gravels – 0.21 m Former topsoil – compact grey clay – 0.2 m
<i>Natural Subsoil</i>	Orangey brown clay with patches of former topsoil impacted into it
<i>Significant Features</i>	None
<i>Other Features</i>	None
<i>Finds</i>	None

**Trench 7**

<i>Location</i>	Zone 4
<i>Dimensions</i>	30 m by 2 m
<i>Excavated Area</i>	60 m <sup>2</sup>
<i>Excavated Orientation</i>	NE to SW
<i>Soil make-up</i>	Made ground – heavily compacted stone and gravel – 0.55 m to 0.86 m
<i>Natural Subsoil</i>	Light brown clay/patches of stony gravel
<i>Significant Features</i>	None
<i>Other Features</i>	None
<i>Finds</i>	None

**Trench 8**

<i>Location</i>	Zone 4
<i>Dimensions</i>	75 m by 2 m
<i>Excavated Area</i>	150 m <sup>2</sup>
<i>Excavated Orientation</i>	N to S
<i>Soil make-up</i>	Disturbed topsoil – dark brown sandy clay loam, stone, grey clay and modern rubbish – 0.29 m to 0.55 m
<i>Natural Subsoil</i>	Orangey brown clay with patches of former topsoil impacted into it until 13 m then orange slightly gravelly clay
<i>Significant Features</i>	None
<i>Other Features</i>	None
<i>Finds</i>	None

**Trench 9**

<i>Location</i>	Zone 4
<i>Dimensions</i>	30 m by 2 m
<i>Excavated Area</i>	60 m <sup>2</sup>
<i>Excavated Orientation</i>	NE to SW
<i>Soil make-up</i>	Topsoil – mid brown clay loam – 0.48 m to 0.75 m
<i>Natural Subsoil</i>	Orangey brown clay
<i>Significant Features</i>	None
<i>Other Features</i>	None
<i>Finds</i>	None

**Trench 10**

<i>Location</i>	Zone 4
<i>Dimensions</i>	60 m by 2 m
<i>Excavated Area</i>	120 m <sup>2</sup>
<i>Excavated Orientation</i>	N to S
<i>Soil make-up</i>	Topsoil – mid brown clay loam – 0.3 m to 0.6 m
<i>Natural Subsoil</i>	Orangey brown clay and gravel
<i>Significant Features</i>	None
<i>Other Features</i>	None
<i>Finds</i>	None



**Trench 11**

<i>Location</i>	Zone 4
<i>Dimensions</i>	55 m by 2 m
<i>Excavated Area</i>	110 m <sup>2</sup>
<i>Excavated Orientation</i>	N to S
<i>Soil make-up</i>	Topsoil – mid brown clay loam – 0.22 m to 0.79 m
<i>Natural Subsoil</i>	Greyish brown clay and gravel
<i>Significant Features</i>	None
<i>Other Features</i>	None
<i>Finds</i>	None

**Trench 12**

<i>Location</i>	Zone 3
<i>Dimensions</i>	55 m by 2 m
<i>Excavated Area</i>	110 m <sup>2</sup>
<i>Excavated Orientation</i>	SW to NE
<i>Soil make-up</i>	Topsoil – mid greyish brown clay loam – 0.59 m
<i>Natural Subsoil</i>	Grey sandy clay and orange sand and gravelly clay until 45 m then orange gravel in a clayey matrix
<i>Significant Features</i>	None
<i>Other Features</i>	Rubble drain at 0.7 m to 1.6 m aligned E-W
<i>Finds</i>	None

**Trench 13**

<i>Location</i>	Zone 3
<i>Dimensions</i>	60 m by 2 m
<i>Excavated Area</i>	120 m <sup>2</sup>
<i>Excavated Orientation</i>	NW to SE
<i>Soil make-up</i>	Topsoil – mid greyish brown clay loam – 0.39 m
<i>Natural Subsoil</i>	Grey sandy clay
<i>Significant Features</i>	None
<i>Other Features</i>	Rubble drain at 28.5 m and 31.9 m aligned E-W
<i>Finds</i>	None

**Trench 14**

<i>Location</i>	Zone 3
<i>Dimensions</i>	30 m by 2 m
<i>Excavated Area</i>	60 m <sup>2</sup>
<i>Excavated Orientation</i>	SE to NW
<i>Soil make-up</i>	Topsoil – mid greyish brown clay loam – 0.4 m
<i>Natural Subsoil</i>	Reddish and orangey brown clay until 5 m then orange sandy clay and gravel
<i>Significant Features</i>	None
<i>Other Features</i>	None
<i>Finds</i>	None

**Trench 15**

<i>Location</i>	Zone 3
<i>Dimensions</i>	25 m by 2 m
<i>Excavated Area</i>	50 m <sup>2</sup>
<i>Excavated Orientation</i>	S to N
<i>Soil make-up</i>	Topsoil – mid greyish brown clay loam – 0.4 m
<i>Natural Subsoil</i>	Reddish and orangey brown clay
<i>Significant Features</i>	None
<i>Other Features</i>	Ceramic tile drain at 6 m to 10 m aligned SE-NW
<i>Finds</i>	None

**Trench 16**

<i>Location</i>	Zone 3
<i>Dimensions</i>	50 m by 2 m
<i>Excavated Area</i>	100 m <sup>2</sup>
<i>Excavated Orientation</i>	SE to NW
<i>Soil make-up</i>	Topsoil – mid greyish brown clay loam – 0.4 m
<i>Natural Subsoil</i>	Orange and yellowish brown clay
<i>Significant Features</i>	None
<i>Other Features</i>	Rubble drain at 6.2 m to 9 m; and 39.9 m to 42.5 m aligned N-S
<i>Finds</i>	None

**Trench 17**

<i>Location</i>	Zone 3
<i>Dimensions</i>	50 m by 2 m
<i>Excavated Area</i>	100 m <sup>2</sup>
<i>Excavated Orientation</i>	SSE to NNW
<i>Soil make-up</i>	Topsoil – mid greyish brown clay loam – 0.36 m
<i>Natural Subsoil</i>	Orange and yellowish brown clay
<i>Significant Features</i>	None
<i>Other Features</i>	Ceramic tile drain at 35.7 m to 38.2 m aligned N-S; Rubble drain at 43.7 m to 50 m aligned N-S
<i>Finds</i>	None

**Trench 18**

<i>Location</i>	Zone 3
<i>Dimensions</i>	50 m by 2 m
<i>Excavated Area</i>	100 m <sup>2</sup>
<i>Excavated Orientation</i>	SSE to NNW
<i>Soil make-up</i>	Topsoil – mid greyish brown clay loam – 0.46 m Former plough soil until 12.5 m – mid brown sandy clay – 0.3 m
<i>Natural Subsoil</i>	Orange and yellowish brown clay
<i>Significant Features</i>	None
<i>Other Features</i>	Rubble drain at 4.8 m to 6.9 m; and 39.4 m to 40.4 m aligned E-W. Ceramic tile drain at 12.7 m to 15.3 m aligned N-S
<i>Finds</i>	None

**Trench 19**

<i>Location</i>	Zone 3
<i>Dimensions</i>	50 m by 2 m
<i>Excavated Area</i>	100 m <sup>2</sup>
<i>Excavated Orientation</i>	NW to SE
<i>Soil make-up</i>	Topsoil – mid greyish brown clay loam – 0.42 m
<i>Natural Subsoil</i>	Orange and yellowish brown clay
<i>Significant Features</i>	None
<i>Other Features</i>	Ceramic tile drain at 18.2 m; and 24.7 m aligned NNW-SSE
<i>Finds</i>	None

**Trench 20**

<i>Location</i>	Zone 3
<i>Dimensions</i>	60 m by 2 m
<i>Excavated Area</i>	120 m <sup>2</sup>
<i>Excavated Orientation</i>	NW to SE
<i>Soil make-up</i>	Topsoil – mid greyish brown clay loam – 0.5 m
<i>Natural Subsoil</i>	Orange and yellowish brown clay
<i>Significant Features</i>	None
<i>Other Features</i>	None
<i>Finds</i>	None

**Trench 21**

<i>Location</i>	Zone 3
<i>Dimensions</i>	60 m by 2 m
<i>Excavated Area</i>	120 m <sup>2</sup>
<i>Excavated Orientation</i>	W to E
<i>Soil make-up</i>	Topsoil – mid greyish brown clay loam – 0.39 m
<i>Natural Subsoil</i>	Orange brown clay until 25 m then yellowish grey silty clay
<i>Significant Features</i>	None
<i>Other Features</i>	Ceramic tile drain at 12.3 m to 14.8 m; 22.6 m to 25 m; and 41.6 m to 44.3 m aligned NNW-SSE
<i>Finds</i>	None

**Trench 22**

<i>Location</i>	Zone 3
<i>Dimensions</i>	50 m by 2 m
<i>Excavated Area</i>	100 m <sup>2</sup>
<i>Excavated Orientation</i>	SE to NW
<i>Soil make-up</i>	Topsoil – mid greyish brown clay loam – 0.6 m
<i>Natural Subsoil</i>	Orange and yellowish brown clay
<i>Significant Features</i>	None
<i>Other Features</i>	None
<i>Finds</i>	None

**Trench 23**

<i>Location</i>	Zone 3
<i>Dimensions</i>	55 m by 2 m
<i>Excavated Area</i>	110 m <sup>2</sup>
<i>Excavated Orientation</i>	N to S
<i>Soil make-up</i>	Topsoil – mid greyish brown clay loam – 0.35 m
<i>Natural Subsoil</i>	Orange sandy clay
<i>Significant Features</i>	None
<i>Other Features</i>	Rubble drain at 11.9 m and 42.6 m aligned E-W
<i>Finds</i>	None

**Trench 24**

<i>Location</i>	Zone 3
<i>Dimensions</i>	60 m by 2 m
<i>Excavated Area</i>	120 m <sup>2</sup>
<i>Excavated Orientation</i>	S to N
<i>Soil make-up</i>	Topsoil – mid greyish brown clay loam – 0.5 m
<i>Natural Subsoil</i>	Orange sandy clay
<i>Significant Features</i>	None
<i>Other Features</i>	Rubble drain at 30.05 m and 32.18 m aligned E-W
<i>Finds</i>	None

**Trench 25**

<i>Location</i>	Zone 3
<i>Dimensions</i>	55 m by 2 m
<i>Excavated Area</i>	110 m <sup>2</sup>
<i>Excavated Orientation</i>	N to S
<i>Soil make-up</i>	Topsoil – mid greyish brown clay loam – 0.5 m
<i>Natural Subsoil</i>	Light brown sandy clay with stones and gravel
<i>Significant Features</i>	None
<i>Other Features</i>	Rubble drain at 22 m and 25.9 m aligned NW-SE
<i>Finds</i>	None

**Trench 26**

<i>Location</i>	Zone 4
<i>Dimensions</i>	40 m by 2 m
<i>Excavated Area</i>	80 m <sup>2</sup>
<i>Excavated Orientation</i>	SE to NW
<i>Soil make-up</i>	Topsoil – mid greyish brown clay loam – 0.46 m
<i>Natural Subsoil</i>	Orange gravels and clay
<i>Significant Features</i>	None
<i>Other Features</i>	None
<i>Finds</i>	None

**Trench 27**

<i>Location</i>	Zone 4
<i>Dimensions</i>	55 m by 2 m
<i>Excavated Area</i>	110 m <sup>2</sup>
<i>Excavated Orientation</i>	N to S
<i>Soil make-up</i>	Topsoil – mid greyish brown clay loam – 0.55 m
<i>Natural Subsoil</i>	Light brown and grey sandy gravel
<i>Significant Features</i>	None
<i>Other Features</i>	None
<i>Finds</i>	None

**Trench 28**

<i>Location</i>	Zone 4
<i>Dimensions</i>	40 m by 2 m
<i>Excavated Area</i>	80 m <sup>2</sup>
<i>Excavated Orientation</i>	N to S
<i>Soil make-up</i>	Topsoil – mid greyish brown clay loam – 0.4 m
<i>Natural Subsoil</i>	Orange gravels and clay
<i>Significant Features</i>	None
<i>Other Features</i>	None
<i>Finds</i>	None

**Trench 29**

<i>Location</i>	Zone 4
<i>Dimensions</i>	55 m by 2 m
<i>Excavated Area</i>	110 m <sup>2</sup>
<i>Excavated Orientation</i>	N to S
<i>Soil make-up</i>	Topsoil – mid greyish brown clay loam – 0.57 m
<i>Natural Subsoil</i>	Orange sandy gravel
<i>Significant Features</i>	None
<i>Other Features</i>	None
<i>Finds</i>	None

**Trench 30**

<i>Location</i>	Zone 4
<i>Dimensions</i>	40 m by 2 m
<i>Excavated Area</i>	80 m <sup>2</sup>
<i>Excavated Orientation</i>	E to W
<i>Soil make-up</i>	Topsoil – mid greyish brown clay loam – 0.48 m
<i>Natural Subsoil</i>	Orange and yellowish brown sandy clay until 25 m then grey gravels
<i>Significant Features</i>	None
<i>Other Features</i>	Rubble drain at 25.1 m aligned N-S
<i>Finds</i>	None

**Trench 31**

<i>Location</i>	Zone 4
<i>Dimensions</i>	55 m by 2 m
<i>Excavated Area</i>	110 m <sup>2</sup>
<i>Excavated Orientation</i>	N to S
<i>Soil make-up</i>	Topsoil – mid greyish brown clay loam – 0.6 m
<i>Natural Subsoil</i>	Orange sandy gravel
<i>Significant Features</i>	None
<i>Other Features</i>	None
<i>Finds</i>	None

**Trench 32**

<i>Location</i>	Zone 4
<i>Dimensions</i>	40 m by 2 m
<i>Excavated Area</i>	80 m <sup>2</sup>
<i>Excavated Orientation</i>	E to W
<i>Soil make-up</i>	Topsoil – mid greyish brown clay loam – 0.34 m
<i>Natural Subsoil</i>	Orange gravel
<i>Significant Features</i>	None
<i>Other Features</i>	None
<i>Finds</i>	None

**Trench 33**

<i>Location</i>	Zone 4
<i>Dimensions</i>	55 m by 2 m
<i>Excavated Area</i>	110 m <sup>2</sup>
<i>Excavated Orientation</i>	N to S
<i>Soil make-up</i>	Topsoil – mid greyish brown clay loam – 0.58 m
<i>Natural Subsoil</i>	Orange sandy gravel
<i>Significant Features</i>	None
<i>Other Features</i>	None
<i>Finds</i>	None

**Trench 34**

<i>Location</i>	Zone 4
<i>Dimensions</i>	20 m by 2 m
<i>Excavated Area</i>	40 m <sup>2</sup>
<i>Excavated Orientation</i>	S to N
<i>Soil make-up</i>	Topsoil – mid greyish brown clay loam – 0.5 m
<i>Natural Subsoil</i>	Orange gravel
<i>Significant Features</i>	None
<i>Other Features</i>	None
<i>Finds</i>	None

**Trench 35**

<i>Location</i>	Zone 4
<i>Dimensions</i>	20 m by 2 m
<i>Excavated Area</i>	40 m <sup>2</sup>
<i>Excavated Orientation</i>	NE to SW
<i>Soil make-up</i>	Topsoil – mid greyish brown clay loam – 0.55 m
<i>Natural Subsoil</i>	Orange gravel
<i>Significant Features</i>	None
<i>Other Features</i>	None
<i>Finds</i>	None

**Trench 36**

<i>Location</i>	Zone 4
<i>Dimensions</i>	20 m by 2 m
<i>Excavated Area</i>	40 m <sup>2</sup>
<i>Excavated Orientation</i>	N to S
<i>Soil make-up</i>	Topsoil – mid greyish brown clay loam – 0.45 m
<i>Natural Subsoil</i>	Orange clayey sand until 10 m then brown gravel
<i>Significant Features</i>	None
<i>Other Features</i>	None
<i>Finds</i>	None

**Trench 37**

<i>Location</i>	Zone 4
<i>Dimensions</i>	20 m by 2 m
<i>Excavated Area</i>	40 m <sup>2</sup>
<i>Excavated Orientation</i>	NE to SW
<i>Soil make-up</i>	Topsoil – mid greyish brown clay loam – 0.52 m
<i>Natural Subsoil</i>	Brown gravel
<i>Significant Features</i>	None
<i>Other Features</i>	None
<i>Finds</i>	None

**Trench 38**

<i>Location</i>	Zone 4
<i>Dimensions</i>	20 m by 2 m
<i>Excavated Area</i>	40 m <sup>2</sup>
<i>Excavated Orientation</i>	NE to SW
<i>Soil make-up</i>	Topsoil – mid greyish brown clay loam – 0.34 m
<i>Natural Subsoil</i>	Orange gravel and clayey sand
<i>Significant Features</i>	None
<i>Other Features</i>	None
<i>Finds</i>	None

**Trench 39**

<i>Location</i>	Zone 4
<i>Dimensions</i>	20 m by 2 m
<i>Excavated Area</i>	40 m <sup>2</sup>
<i>Excavated Orientation</i>	W to E
<i>Soil make-up</i>	Topsoil – mid greyish brown clay loam – 0.49 m
<i>Natural Subsoil</i>	Brown gravel
<i>Significant Features</i>	None
<i>Other Features</i>	None
<i>Finds</i>	None

**Trench 40**

<i>Location</i>	Zone 4
<i>Dimensions</i>	20 m by 2 m
<i>Excavated Area</i>	40 m <sup>2</sup>
<i>Excavated Orientation</i>	W to E
<i>Soil make-up</i>	Topsoil – mid greyish brown clay loam – 0.35 m
<i>Natural Subsoil</i>	Orange and yellow gravel
<i>Significant Features</i>	None
<i>Other Features</i>	None
<i>Finds</i>	None

**Trench 41**

<i>Location</i>	Zone 4
<i>Dimensions</i>	20 m by 2 m
<i>Excavated Area</i>	40 m <sup>2</sup>
<i>Excavated Orientation</i>	W to E
<i>Soil make-up</i>	Topsoil – mid greyish brown clay loam – 0.5 m
<i>Natural Subsoil</i>	Brown gravel
<i>Significant Features</i>	None
<i>Other Features</i>	None
<i>Finds</i>	None

**Trench 42**

<i>Location</i>	Zone 5
<i>Dimensions</i>	100 m by 2 m
<i>Excavated Area</i>	200 m <sup>2</sup>
<i>Excavated Orientation</i>	S to N
<i>Soil make-up</i>	Topsoil – dark reddish brown clay loam – 0.5 m
<i>Natural Subsoil</i>	Reddish brown clay until 10.6 m then orangey brown sandy clay until 28.5 m then yellow and orange sandy clay – plough scarring from 72 m onwards
<i>Significant Features</i>	Deposit [4201] at 53.8 m
<i>Other Features</i>	None
<i>Finds</i>	None

**Trench 43**

<i>Location</i>	Zone 5
<i>Dimensions</i>	50 m by 2 m
<i>Excavated Area</i>	100 m <sup>2</sup>
<i>Excavated Orientation</i>	SE to NW
<i>Soil make-up</i>	Topsoil – dark reddish brown clay loam – 0.5 m
<i>Natural Subsoil</i>	Reddish brown clay until 20 m then orange sandy clay
<i>Significant Features</i>	None
<i>Other Features</i>	None
<i>Finds</i>	None

**Trench 44**

<i>Location</i>	Zone 5
<i>Dimensions</i>	100 m by 2 m
<i>Excavated Area</i>	200 m <sup>2</sup>
<i>Excavated Orientation</i>	S to N
<i>Soil make-up</i>	Topsoil – dark reddish brown clay loam – 0.5 m
<i>Natural Subsoil</i>	Orange sandy clay and stone until 9 m then reddish brown clay until 19 m then orange sandy clay
<i>Significant Features</i>	None
<i>Other Features</i>	Furrow at 32.3 m to 40 m aligned SE-NW and measuring 0.7 m wide by 0.03 m. Curving rubble drain at 76.1 m to 77.5 m aligned SW to NE then curving to NNW and leaving trench at 82.7 m
<i>Finds</i>	None

**Trench 45**

<i>Location</i>	Zone 5
<i>Dimensions</i>	50 m by 2 m
<i>Excavated Area</i>	100 m <sup>2</sup>
<i>Excavated Orientation</i>	SE to NW
<i>Soil make-up</i>	Topsoil – dark reddish brown clay loam – 0.4 m
<i>Natural Subsoil</i>	Reddish brown clay until 47 m then brown gravel
<i>Significant Features</i>	Probable field boundary ditch [4501] at 40.05 m aligned E-W
<i>Other Features</i>	None
<i>Finds</i>	None



**Trench 46**

<i>Location</i>	Zone 5
<i>Dimensions</i>	50 m by 2 m
<i>Excavated Area</i>	100 m <sup>2</sup>
<i>Excavated Orientation</i>	SE to NW
<i>Soil make-up</i>	Topsoil – dark reddish brown clay loam – 0.32 m
<i>Natural Subsoil</i>	Reddish brown clay
<i>Significant Features</i>	None
<i>Other Features</i>	Rubble drain at 24.3 m aligned NE-SW, and at 35.4 m to 39.7 m aligned N-S
<i>Finds</i>	None

**Trench 47**

<i>Location</i>	Zone 5
<i>Dimensions</i>	50 m by 2 m
<i>Excavated Area</i>	100 m <sup>2</sup>
<i>Excavated Orientation</i>	SE to NW
<i>Soil make-up</i>	Topsoil – dark reddish brown clay loam – 0.44 m
<i>Natural Subsoil</i>	Reddish brown clay until 23 m then orangey brown sandy clay
<i>Significant Features</i>	None
<i>Other Features</i>	None
<i>Finds</i>	None

**Trench 48**

<i>Location</i>	Zone 5
<i>Dimensions</i>	50 m by 2 m
<i>Excavated Area</i>	100 m <sup>2</sup>
<i>Excavated Orientation</i>	SE to NW
<i>Soil make-up</i>	Topsoil – dark reddish brown clay loam – 0.34 m
<i>Natural Subsoil</i>	Orange and pink clay
<i>Significant Features</i>	Pit [4801] at 2.7 m.
<i>Other Features</i>	Rubble drains at 27.4 m to 30.1 m and 37.3 m to 39.9 m aligned NW-SE
<i>Finds</i>	None

**Trench 49**

<i>Location</i>	Zone 5
<i>Dimensions</i>	50 m by 2 m
<i>Excavated Area</i>	100 m <sup>2</sup>
<i>Excavated Orientation</i>	SE to NW
<i>Soil make-up</i>	Topsoil – dark reddish brown clay loam – 0.55 m
<i>Natural Subsoil</i>	Orange sandy clay until 30 m then reddish brown clay
<i>Significant Features</i>	None
<i>Other Features</i>	None
<i>Finds</i>	None

**Trench 50**

<i>Location</i>	Zone 5
<i>Dimensions</i>	50 m by 2 m
<i>Excavated Area</i>	100 m <sup>2</sup>
<i>Excavated Orientation</i>	NE to SW
<i>Soil make-up</i>	Topsoil – dark reddish brown clay loam – 0.36 m
<i>Natural Subsoil</i>	Orange and pink clay with plough scarring evident throughout
<i>Significant Features</i>	None
<i>Other Features</i>	None
<i>Finds</i>	None

**Trench 51**

<i>Location</i>	Zone 5
<i>Dimensions</i>	50 m by 2 m
<i>Excavated Area</i>	100 m <sup>2</sup>
<i>Excavated Orientation</i>	SE to NW
<i>Soil make-up</i>	Topsoil – dark reddish brown clay loam – 0.42 m
<i>Natural Subsoil</i>	Reddish brown clay until 19 m then orange sandy clay
<i>Significant Features</i>	None
<i>Other Features</i>	None
<i>Finds</i>	None

**Trench 52**

<i>Location</i>	Zone 5
<i>Dimensions</i>	50 m by 2 m
<i>Excavated Area</i>	100 m <sup>2</sup>
<i>Excavated Orientation</i>	NE to SW
<i>Soil make-up</i>	Topsoil – dark reddish brown clay loam – 0.48 m
<i>Natural Subsoil</i>	Orange and pink clay
<i>Significant Features</i>	None
<i>Other Features</i>	None
<i>Finds</i>	None

**Trench 53**

<i>Location</i>	Zone 5
<i>Dimensions</i>	50 m by 2 m
<i>Excavated Area</i>	100 m <sup>2</sup>
<i>Excavated Orientation</i>	SE to NW
<i>Soil make-up</i>	Topsoil – dark reddish brown clay loam – 0.48 m
<i>Natural Subsoil</i>	Reddish brown clay until 17 m then orange sandy clay
<i>Significant Features</i>	None
<i>Other Features</i>	None
<i>Finds</i>	None

**Trench 54**

<i>Location</i>	Zone 5
<i>Dimensions</i>	50 m by 2 m
<i>Excavated Area</i>	100 m <sup>2</sup>
<i>Excavated Orientation</i>	NE to SW
<i>Soil make-up</i>	Topsoil – dark reddish brown clay loam – 0.33 m
<i>Natural Subsoil</i>	Orange and pink clay
<i>Significant Features</i>	None
<i>Other Features</i>	None
<i>Finds</i>	None

**Trench 55**

<i>Location</i>	Zone 5
<i>Dimensions</i>	50 m by 2 m
<i>Excavated Area</i>	100 m <sup>2</sup>
<i>Excavated Orientation</i>	NE to SW
<i>Soil make-up</i>	Topsoil – dark reddish brown clay loam – 0.43 m
<i>Natural Subsoil</i>	Orange sandy clay
<i>Significant Features</i>	None
<i>Other Features</i>	Rubble drain at 4.1 m to 6.5 m aligned N-S
<i>Finds</i>	None

**Trench 56**

<i>Location</i>	Zone 5
<i>Dimensions</i>	50 m by 2 m
<i>Excavated Area</i>	100 m <sup>2</sup>
<i>Excavated Orientation</i>	SW to NE
<i>Soil make-up</i>	Topsoil – dark reddish brown clay loam – 0.52 m
<i>Natural Subsoil</i>	Reddish brown clay
<i>Significant Features</i>	None
<i>Other Features</i>	None
<i>Finds</i>	None

**Trench 57**

<i>Location</i>	Zone 5
<i>Dimensions</i>	50 m by 2 m
<i>Excavated Area</i>	100 m <sup>2</sup>
<i>Excavated Orientation</i>	SW to NE
<i>Soil make-up</i>	Topsoil – dark reddish brown clay loam – 0.42 m
<i>Natural Subsoil</i>	Reddish brown clay
<i>Significant Features</i>	None
<i>Other Features</i>	Rubble drain at 17.8 m to 21.4 m aligned N-S
<i>Finds</i>	None

**Trench 58**

<i>Location</i>	Zone 5
<i>Dimensions</i>	50 m by 2 m
<i>Excavated Area</i>	100 m <sup>2</sup>
<i>Excavated Orientation</i>	SW to NE
<i>Soil make-up</i>	Topsoil – dark reddish brown clay loam – 0.37 m
<i>Natural Subsoil</i>	Reddish brown clay
<i>Significant Features</i>	None
<i>Other Features</i>	None
<i>Finds</i>	None

**Trench 59**

<i>Location</i>	Zone 5
<i>Dimensions</i>	50 m by 2 m
<i>Excavated Area</i>	100 m <sup>2</sup>
<i>Excavated Orientation</i>	S to N
<i>Soil make-up</i>	Topsoil – dark reddish brown clay loam – 0.38 m
<i>Natural Subsoil</i>	Reddish brown clay
<i>Significant Features</i>	None
<i>Other Features</i>	None
<i>Finds</i>	None

**Trench 60**

<i>Location</i>	Zone 5
<i>Dimensions</i>	50 m by 2 m
<i>Excavated Area</i>	100 m <sup>2</sup>
<i>Excavated Orientation</i>	N to S
<i>Soil make-up</i>	Topsoil – dark reddish brown clay loam – 0.33 m
<i>Natural Subsoil</i>	Pink and orange sandy clay
<i>Significant Features</i>	None
<i>Other Features</i>	None
<i>Finds</i>	None

**Trench 61**

<i>Location</i>	Zone 5
<i>Dimensions</i>	50 m by 2 m
<i>Excavated Area</i>	100 m <sup>2</sup>
<i>Excavated Orientation</i>	N to S
<i>Soil make-up</i>	Topsoil – dark reddish brown clay loam – 0.44 m
<i>Natural Subsoil</i>	Pink and orange sandy clay
<i>Significant Features</i>	None
<i>Other Features</i>	None
<i>Finds</i>	None

**Trench 62**

<i>Location</i>	Zone 5
<i>Dimensions</i>	50 m by 2 m
<i>Excavated Area</i>	100 m <sup>2</sup>
<i>Excavated Orientation</i>	S to N
<i>Soil make-up</i>	Topsoil – dark reddish brown clay loam – 0.35 m
<i>Natural Subsoil</i>	Pink clay until 5 m then brown gravel
<i>Significant Features</i>	None
<i>Other Features</i>	None
<i>Finds</i>	None

**Trench 63**

<i>Location</i>	Zone 5
<i>Dimensions</i>	45 m by 2 m
<i>Excavated Area</i>	90 m <sup>2</sup>
<i>Excavated Orientation</i>	N to S
<i>Soil make-up</i>	Topsoil – dark reddish brown clay loam – 0.35 m
<i>Natural Subsoil</i>	Reddish brown clay until 14 m then orange and pink clayey sand
<i>Significant Features</i>	None
<i>Other Features</i>	None
<i>Finds</i>	None

**Trench 64**

<i>Location</i>	Zone 5
<i>Dimensions</i>	55 m by 2 m
<i>Excavated Area</i>	110 m <sup>2</sup>
<i>Excavated Orientation</i>	S to N
<i>Soil make-up</i>	Topsoil – dark reddish brown clay loam – 0.4 m
<i>Natural Subsoil</i>	Light grey clay with yellow clay patches until 11 m then orange and pink clay
<i>Significant Features</i>	None
<i>Other Features</i>	None
<i>Finds</i>	None

**Trench 65**

<i>Location</i>	Zone 5
<i>Dimensions</i>	50 m by 2 m
<i>Excavated Area</i>	100 m <sup>2</sup>
<i>Excavated Orientation</i>	S to N
<i>Soil make-up</i>	Topsoil – dark reddish brown clay loam – 0.34 m
<i>Natural Subsoil</i>	Grey clay until 15 m then greenish grey gravel
<i>Significant Features</i>	None
<i>Other Features</i>	Rubble drain at 1 m to 2.3 m; 9.5 m to 10.9 m; 20.6 m to 21.2 m; and 26.6 m to 27.4 m aligned SE-NW. Ceramic tile drain at 12.6 m to 15.4 m; and 32 m to 48 m aligned SE-NW, and at 18.8 m to 21.2 m aligned SW-NE
<i>Finds</i>	None

**Trench 66**

<i>Location</i>	Zone 5
<i>Dimensions</i>	50 m by 2 m
<i>Excavated Area</i>	100 m <sup>2</sup>
<i>Excavated Orientation</i>	S to N
<i>Soil make-up</i>	Topsoil – dark reddish brown clay loam – 0.37 m
<i>Natural Subsoil</i>	Mid grey clay
<i>Significant Features</i>	None
<i>Other Features</i>	None
<i>Finds</i>	None

**Trench 67**

<i>Location</i>	Zone 5
<i>Dimensions</i>	50 m by 2 m
<i>Excavated Area</i>	100 m <sup>2</sup>
<i>Excavated Orientation</i>	WSW to ENE
<i>Soil make-up</i>	Topsoil – dark reddish brown clay loam – 0.49 m
<i>Natural Subsoil</i>	Reddish brown clay and clayey gravel until 39 m then mid brown sandy clay
<i>Significant Features</i>	None
<i>Other Features</i>	Rubble drain at 41 m aligned N-S
<i>Finds</i>	None

**Trench 68**

<i>Location</i>	Zone 5
<i>Dimensions</i>	50 m by 2 m
<i>Excavated Area</i>	100 m <sup>2</sup>
<i>Excavated Orientation</i>	WSW to ENE
<i>Soil make-up</i>	Topsoil – dark reddish brown clay loam – 0.64 m
<i>Natural Subsoil</i>	Mid greyish brown sandy clay until 36 m then orange sandy clay
<i>Significant Features</i>	None
<i>Other Features</i>	Rubble drain at 2.8 m to 4.7 m aligned NE-SW, and at 18 m to 19.2 m aligned N-S
<i>Finds</i>	None

**Trench 69**

<i>Location</i>	Zone 5
<i>Dimensions</i>	50 m by 2 m
<i>Excavated Area</i>	100 m <sup>2</sup>
<i>Excavated Orientation</i>	NE to SW
<i>Soil make-up</i>	Topsoil – dark reddish brown clay loam – 0.39 m
<i>Natural Subsoil</i>	Dark orangey brown sandy gravel
<i>Significant Features</i>	None
<i>Other Features</i>	None
<i>Finds</i>	None

**Trench 70**

<i>Location</i>	Zone 5
<i>Dimensions</i>	50 m by 2 m
<i>Excavated Area</i>	100 m <sup>2</sup>
<i>Excavated Orientation</i>	ESE to WNW
<i>Soil make-up</i>	Topsoil – dark reddish brown clay loam – 0.42 m
<i>Natural Subsoil</i>	Orange sandy gravel until 7 m then pink clay
<i>Significant Features</i>	None
<i>Other Features</i>	None
<i>Finds</i>	None

**Trench 71**

<i>Location</i>	Zone 5
<i>Dimensions</i>	50 m by 2 m
<i>Excavated Area</i>	100 m <sup>2</sup>
<i>Excavated Orientation</i>	WNW to ESE
<i>Soil make-up</i>	Topsoil – dark reddish brown clay loam – 0.35 m
<i>Natural Subsoil</i>	Orange sandy clay
<i>Significant Features</i>	None
<i>Other Features</i>	None
<i>Finds</i>	None

**Trench 72**

<i>Location</i>	Zone 5
<i>Dimensions</i>	50 m by 2 m
<i>Excavated Area</i>	100 m <sup>2</sup>
<i>Excavated Orientation</i>	WNW to ESE
<i>Soil make-up</i>	Topsoil – dark reddish brown clay loam – 0.48 m
<i>Natural Subsoil</i>	Orange sandy gravel and clay
<i>Significant Features</i>	None
<i>Other Features</i>	None
<i>Finds</i>	None

**Trench 73**

<i>Location</i>	Zone 5
<i>Dimensions</i>	50 m by 2 m
<i>Excavated Area</i>	100 m <sup>2</sup>
<i>Excavated Orientation</i>	WNW to ESE
<i>Soil make-up</i>	Topsoil – dark reddish brown clay loam – 0.35 m
<i>Natural Subsoil</i>	Orange and pink sandy clay
<i>Significant Features</i>	None
<i>Other Features</i>	None
<i>Finds</i>	None

**Trench 74**

<i>Location</i>	Zone 5
<i>Dimensions</i>	50 m by 2 m
<i>Excavated Area</i>	100 m <sup>2</sup>
<i>Excavated Orientation</i>	E to W
<i>Soil make-up</i>	Topsoil – dark reddish brown clay loam – 0.37 m
<i>Natural Subsoil</i>	Pink sandy clay
<i>Significant Features</i>	None
<i>Other Features</i>	Rubble drain at 9.4 m to 10.5 m aligned NW-SE
<i>Finds</i>	None

**Trench 75**

<i>Location</i>	Zone 5
<i>Dimensions</i>	50 m by 2 m
<i>Excavated Area</i>	100 m <sup>2</sup>
<i>Excavated Orientation</i>	NE to SW
<i>Soil make-up</i>	Topsoil – dark reddish brown clay loam – 0.32 m
<i>Natural Subsoil</i>	Reddish and orangey brown sandy clay
<i>Significant Features</i>	None
<i>Other Features</i>	None
<i>Finds</i>	None

**Trench 76**

<i>Location</i>	Zone 5
<i>Dimensions</i>	75 m by 2 m
<i>Excavated Area</i>	150 m <sup>2</sup>
<i>Excavated Orientation</i>	E to W
<i>Soil make-up</i>	Topsoil – dark reddish brown clay loam – 0.41 m
<i>Natural Subsoil</i>	Pink sandy clay
<i>Significant Features</i>	None
<i>Other Features</i>	None
<i>Finds</i>	None

**Trench 77**

<i>Location</i>	Zone 5
<i>Dimensions</i>	75 m by 2 m
<i>Excavated Area</i>	150 m <sup>2</sup>
<i>Excavated Orientation</i>	NE to SW
<i>Soil make-up</i>	Topsoil – dark reddish brown clay loam – 0.34 m
<i>Natural Subsoil</i>	Pink sandy clay and stone until 36 m then orange clayey sand and gravel
<i>Significant Features</i>	None
<i>Other Features</i>	None
<i>Finds</i>	None

**Trench 78**

<i>Location</i>	Zone 5
<i>Dimensions</i>	50 m by 2 m
<i>Excavated Area</i>	100 m <sup>2</sup>
<i>Excavated Orientation</i>	N to S
<i>Soil make-up</i>	Topsoil – dark reddish brown clay loam – 0.44 m
<i>Natural Subsoil</i>	Orange clay with gravel
<i>Significant Features</i>	None
<i>Other Features</i>	Rubble drain at 27.9 m to 34.3 m aligned NW-SE
<i>Finds</i>	None

**Trench 79**

<i>Location</i>	Zone 5
<i>Dimensions</i>	50 m by 2 m
<i>Excavated Area</i>	100 m <sup>2</sup>
<i>Excavated Orientation</i>	E to W
<i>Soil make-up</i>	Topsoil – dark reddish brown clay loam – 0.4 m
<i>Natural Subsoil</i>	Orange sandy clay
<i>Significant Features</i>	None
<i>Other Features</i>	None
<i>Finds</i>	None

**Trench 80**

<i>Location</i>	Zone 5
<i>Dimensions</i>	50 m by 2 m
<i>Excavated Area</i>	100 m <sup>2</sup>
<i>Excavated Orientation</i>	N to S
<i>Soil make-up</i>	Topsoil – dark reddish brown clay loam – 0.42 m
<i>Natural Subsoil</i>	Orange and pink clay with gravel
<i>Significant Features</i>	None
<i>Other Features</i>	None
<i>Finds</i>	None

**Trench 81**

<i>Location</i>	Zone 5
<i>Dimensions</i>	20 m by 2 m
<i>Excavated Area</i>	40 m <sup>2</sup>
<i>Excavated Orientation</i>	SE to NW
<i>Soil make-up</i>	Topsoil – dark reddish brown clay loam – 0.33 m
<i>Natural Subsoil</i>	Orange sandy clay and stone
<i>Significant Features</i>	None
<i>Other Features</i>	None
<i>Finds</i>	None

**Trench 82**

<i>Location</i>	Zone 5
<i>Dimensions</i>	6 m by 5 m
<i>Excavated Area</i>	30 m <sup>2</sup>
<i>Excavated Orientation</i>	N/A
<i>Soil make-up</i>	Topsoil – dark reddish brown clay loam – 0.32 m
<i>Natural Subsoil</i>	Orange and pink clay
<i>Significant Features</i>	None
<i>Other Features</i>	Rubble drain in NW corner aligned N-S
<i>Finds</i>	None

**Trench 83**

<i>Location</i>	Zone 6
<i>Dimensions</i>	100 m by 2 m
<i>Excavated Area</i>	200 m <sup>2</sup>
<i>Excavated Orientation</i>	N to S
<i>Soil make-up</i>	Topsoil – dark greyish brown clay loam – 0.46 m
<i>Natural Subsoil</i>	Pink and orange clay until 47 m then reddish brown clay until 56 m then orange sandy clay until 65 m then reddish brown clay
<i>Significant Features</i>	None
<i>Other Features</i>	Post-medieval pit at 14 m containing brown glazed pottery fragment
<i>Finds</i>	None

**Trench 84**

<i>Location</i>	Zone 6
<i>Dimensions</i>	100 m by 2 m
<i>Excavated Area</i>	200 m <sup>2</sup>
<i>Excavated Orientation</i>	E to W
<i>Soil make-up</i>	Topsoil – dark reddish brown clay loam – 0.45 m
<i>Natural Subsoil</i>	Light brown clay
<i>Significant Features</i>	None
<i>Other Features</i>	None
<i>Finds</i>	None

**Trench 85**

<i>Location</i>	Zone 6
<i>Dimensions</i>	50 m by 2 m
<i>Excavated Area</i>	100 m <sup>2</sup>
<i>Excavated Orientation</i>	N to S
<i>Soil make-up</i>	Topsoil – dark reddish brown clay loam – 0.46 m
<i>Natural Subsoil</i>	Orange sandy clay and reddish brown clay until 40 m then reddish brown clay
<i>Significant Features</i>	Pit [8501]/[8502] at 26 m. Ditch [8503]/[8504] at 14 m to 24 m
<i>Other Features</i>	None
<i>Finds</i>	None



**Trench 86**

<i>Location</i>	Zone 6
<i>Dimensions</i>	40 m by 2 m
<i>Excavated Area</i>	80 m <sup>2</sup>
<i>Excavated Orientation</i>	E to W
<i>Soil make-up</i>	Topsoil – dark reddish brown clay loam – 0.48 m
<i>Natural Subsoil</i>	Light brown and yellow sandy clay
<i>Significant Features</i>	None
<i>Other Features</i>	Rubble drain at 34.4 m to 35.1 m aligned N-S
<i>Finds</i>	None

**Trench 87**

<i>Location</i>	Zone 6
<i>Dimensions</i>	100 m by 2 m
<i>Excavated Area</i>	200 m <sup>2</sup>
<i>Excavated Orientation</i>	NW to SE
<i>Soil make-up</i>	Topsoil – dark reddish brown clay loam – 0.43 m
<i>Natural Subsoil</i>	Orangey brown sandy clay
<i>Significant Features</i>	Pit [8701]/[8702]
<i>Other Features</i>	None
<i>Finds</i>	None

**Trench 88**

<i>Location</i>	Zone 6
<i>Dimensions</i>	100 m by 2 m
<i>Excavated Area</i>	200 m <sup>2</sup>
<i>Excavated Orientation</i>	NW to SE
<i>Soil make-up</i>	Topsoil – dark reddish brown clay loam – 0.45 m
<i>Natural Subsoil</i>	Orange clay and stone with areas of reddish brown clay until 40 m then reddish brown clay
<i>Significant Features</i>	Pit [8801]/[8802]
<i>Other Features</i>	Furrows at 28.7 m, 43 m, 57.5 m, 73 m, and 87.4 m aligned N-S. Up to 2.2 m wide by 0.1 m
<i>Finds</i>	None

**Trench 89**

<i>Location</i>	Zone 6
<i>Dimensions</i>	50 m by 2 m
<i>Excavated Area</i>	100 m <sup>2</sup>
<i>Excavated Orientation</i>	NE to SW
<i>Soil make-up</i>	Topsoil – dark reddish brown clay loam – 0.44 m
<i>Natural Subsoil</i>	Orange sandy clay
<i>Significant Features</i>	None
<i>Other Features</i>	Rubble drains at 8.6 m to 10.4 m; and 33.9 m to 35.1 m aligned E-W. Also at 18 m to 19.1 m; 21.6 m to 22.4 m aligned NW-SE. Ceramic tile drain at 30.9 m to 31.6 m aligned NW-SE
<i>Finds</i>	None

**Trench 90**

<i>Location</i>	Zone 6
<i>Dimensions</i>	50 m by 2 m
<i>Excavated Area</i>	100 m <sup>2</sup>
<i>Excavated Orientation</i>	SW to NE
<i>Soil make-up</i>	Topsoil – dark reddish brown clay loam – 0.43 m
<i>Natural Subsoil</i>	Orange clayey sand
<i>Significant Features</i>	None
<i>Other Features</i>	Rubble drain at 11.4 m to 13.6 m aligned E-W. Also at 19.4 m to 20.3 m; 25.8 m to 26.5 m; 30.8 m to 31.4 m; 41 m to 41.8 m aligned N-S. Ceramic tile drain at 34.3 m to 36.2 m aligned ESE-WNW
<i>Finds</i>	None

**Trench 91**

<i>Location</i>	Zone 6
<i>Dimensions</i>	100 m by 2 m
<i>Excavated Area</i>	200 m <sup>2</sup>
<i>Excavated Orientation</i>	NW to SE
<i>Soil make-up</i>	Topsoil – dark reddish brown clay loam – 0.54 m
<i>Natural Subsoil</i>	Orangey brown sandy clay
<i>Significant Features</i>	None
<i>Other Features</i>	None
<i>Finds</i>	None

**Trench 92**

<i>Location</i>	Zone 6
<i>Dimensions</i>	100 m by 2 m
<i>Excavated Area</i>	200 m <sup>2</sup>
<i>Excavated Orientation</i>	NW to SE
<i>Soil make-up</i>	Topsoil – dark reddish brown clay loam – 0.41 m
<i>Natural Subsoil</i>	Reddish brown clay until 51.5 m then yellowish brown sandy clay (plough scarred)
<i>Significant Features</i>	None
<i>Other Features</i>	Furrows at 50 m, 63 m and 77.4 m aligned N-S
<i>Finds</i>	None

**Trench 93**

<i>Location</i>	Zone 6
<i>Dimensions</i>	50 m by 2 m
<i>Excavated Area</i>	100 m <sup>2</sup>
<i>Excavated Orientation</i>	SW to NE
<i>Soil make-up</i>	Topsoil – dark reddish brown clay loam – 0.45 m
<i>Natural Subsoil</i>	Orangey brown sandy clay
<i>Significant Features</i>	None
<i>Other Features</i>	Rubble drain at 19.5 m to 21.3 m; 29 m to 29.9 m; 36 m to 36.8 m and 41 m to 41.9 m, all aligned N-S
<i>Finds</i>	None

**Trench 94**

<i>Location</i>	Zone 6
<i>Dimensions</i>	50 m by 2 m
<i>Excavated Area</i>	100 m <sup>2</sup>
<i>Excavated Orientation</i>	SW to NE
<i>Soil make-up</i>	Topsoil – dark reddish brown clay loam – 0.38 m
<i>Natural Subsoil</i>	Orangey brown sandy clay
<i>Significant Features</i>	None
<i>Other Features</i>	Rubble drain at 39.1 m to 41.6 m and 46.4 m to 50 m aligned NW-SE
<i>Finds</i>	None

**Trench 95**

<i>Location</i>	Zone 6
<i>Dimensions</i>	100 m by 2 m
<i>Excavated Area</i>	200 m <sup>2</sup>
<i>Excavated Orientation</i>	SW to NE
<i>Soil make-up</i>	Topsoil – dark reddish brown clay loam – 0.52 m
<i>Natural Subsoil</i>	Orangey brown sandy clay
<i>Significant Features</i>	None
<i>Other Features</i>	Furrow at 41 m to 42.6 m aligned N-S. Modern pit at 86 m
<i>Finds</i>	None

**Trench 96**

<i>Location</i>	Zone 6
<i>Dimensions</i>	50 m by 2 m
<i>Excavated Area</i>	100 m <sup>2</sup>
<i>Excavated Orientation</i>	S to N
<i>Soil make-up</i>	Topsoil – dark reddish brown clay loam – 0.41 m
<i>Natural Subsoil</i>	Reddish brown clay until 16 m then orangey brown sandy clay until 80 m then reddish brown clay (plough scarred)
<i>Significant Features</i>	None
<i>Other Features</i>	None
<i>Finds</i>	None

**Trench 97**

<i>Location</i>	Zone 6
<i>Dimensions</i>	50 m by 2 m
<i>Excavated Area</i>	100 m <sup>2</sup>
<i>Excavated Orientation</i>	SW to NE
<i>Soil make-up</i>	Topsoil – dark reddish brown clay loam – 0.43 m
<i>Natural Subsoil</i>	Orangey brown sandy gravel
<i>Significant Features</i>	None
<i>Other Features</i>	Rubble drain at 41.5 m to 43.9 m
<i>Finds</i>	None

**Trench 98**

<i>Location</i>	Zone 6
<i>Dimensions</i>	100 m by 2 m
<i>Excavated Area</i>	200 m <sup>2</sup>
<i>Excavated Orientation</i>	NW to SE
<i>Soil make-up</i>	Topsoil – dark reddish brown clay loam – 0.4 m
<i>Natural Subsoil</i>	Reddish brown clay until 5.8 m then reddish brown sand and gravel until 68 m then reddish brown clay until 97 m then reddish brown sand
<i>Significant Features</i>	None
<i>Other Features</i>	None
<i>Finds</i>	None

**Trench 99**

<i>Location</i>	Zone 6
<i>Dimensions</i>	100 m by 2 m
<i>Excavated Area</i>	200 m <sup>2</sup>
<i>Excavated Orientation</i>	SW to NE
<i>Soil make-up</i>	Topsoil – dark reddish brown clay loam – 0.5 m
<i>Natural Subsoil</i>	Orangey brown sandy clay
<i>Significant Features</i>	None
<i>Other Features</i>	None
<i>Finds</i>	None

**Trench 100**

<i>Location</i>	Zone 6
<i>Dimensions</i>	50 m by 2 m
<i>Excavated Area</i>	100 m <sup>2</sup>
<i>Excavated Orientation</i>	SW to NE
<i>Soil make-up</i>	Topsoil – dark reddish brown clay loam – 0.45 m
<i>Natural Subsoil</i>	Orangey brown sandy clay
<i>Significant Features</i>	None
<i>Other Features</i>	Rubble drain at 29 m aligned N-S
<i>Finds</i>	None

**Trench 101**

<i>Location</i>	Zone 6
<i>Dimensions</i>	50 m by 2 m
<i>Excavated Area</i>	100 m <sup>2</sup>
<i>Excavated Orientation</i>	SW to NE
<i>Soil make-up</i>	Topsoil – dark reddish brown clay loam – 0.52 m
<i>Natural Subsoil</i>	Reddish brown clay
<i>Significant Features</i>	None
<i>Other Features</i>	None
<i>Finds</i>	None

**Trench 102**

<i>Location</i>	Zone 6
<i>Dimensions</i>	100 m by 2 m
<i>Excavated Area</i>	200 m <sup>2</sup>
<i>Excavated Orientation</i>	N to S
<i>Soil make-up</i>	Topsoil – dark reddish brown clay loam – 0.34 m
<i>Natural Subsoil</i>	Yellowish brown sandy clay until 9.5 m then orange and reddish brown clay (plough scarred towards south)
<i>Significant Features</i>	None
<i>Other Features</i>	None
<i>Finds</i>	None

**Trench 103**

<i>Location</i>	Zone 6
<i>Dimensions</i>	100 m by 2 m
<i>Excavated Area</i>	200 m <sup>2</sup>
<i>Excavated Orientation</i>	NW to SE
<i>Soil make-up</i>	Topsoil – dark reddish brown clay loam – 0.44 m
<i>Natural Subsoil</i>	Orangey brown sandy clay
<i>Significant Features</i>	Pit [10301]/[10302] at 8.2 m Post hole [10303]/[10304] at 58.6 m Post hole [10305]/[10306] at 59.1 m Post hole [10307]/[10308] at 60.2 m Post hole [10309]/[10310] at 61.1 m Pit [10311]/[10312] at 62.3 m Pit [10313]/[10314] at 62.4 m Deposit [10315] at 60.1 m to 62.3 m Ditch [10316]/[10317] at 75.4 m to 76.1 m aligned WNW-ESE Pit [10318]/[10319] at 63.5 m
<i>Other Features</i>	None
<i>Finds</i>	None

**Trench 104**

<i>Location</i>	Zone 6
<i>Dimensions</i>	100 m by 2 m
<i>Excavated Area</i>	200 m <sup>2</sup>
<i>Excavated Orientation</i>	NW to SE
<i>Soil make-up</i>	Topsoil – dark reddish brown clay loam – 0.5 m
<i>Natural Subsoil</i>	Orangey clay until 55 m then orange sandy clay and gravel until 78 m then orange gravel.
<i>Significant Features</i>	Deposit [10403] at 76 m
<i>Other Features</i>	Charcoal stained deposits [10401] and [10402] at 62 m Furrows at 33.2 m, 45 m, 57 m, 63.7 m, 71.1 m, 80 m, 85 m and 92 m aligned N-S and measuring up to 3.4 m wide
<i>Finds</i>	None

**Trench 105**

<i>Location</i>	Zone 6
<i>Dimensions</i>	50 m by 2 m
<i>Excavated Area</i>	100 m <sup>2</sup>
<i>Excavated Orientation</i>	SW to NE
<i>Soil make-up</i>	Topsoil – dark reddish brown clay loam – 0.53 m
<i>Natural Subsoil</i>	Dark brown clayey gravel
<i>Significant Features</i>	None
<i>Other Features</i>	None
<i>Finds</i>	None

**Trench 106**

<i>Location</i>	Zone 6
<i>Dimensions</i>	50 m by 2 m
<i>Excavated Area</i>	100 m <sup>2</sup>
<i>Excavated Orientation</i>	S to N
<i>Soil make-up</i>	Topsoil – dark reddish brown clay loam – 0.53 m
<i>Natural Subsoil</i>	Orangey brown sandy clay
<i>Significant Features</i>	None
<i>Other Features</i>	None
<i>Finds</i>	None

**Trench 107**

<i>Location</i>	Zone 6
<i>Dimensions</i>	100 m by 2 m
<i>Excavated Area</i>	200 m <sup>2</sup>
<i>Excavated Orientation</i>	NW to SE
<i>Soil make-up</i>	Topsoil – dark reddish brown clay loam – 0.54 m
<i>Natural Subsoil</i>	Orangey brown sandy clay
<i>Significant Features</i>	None
<i>Other Features</i>	None
<i>Finds</i>	None

**Trench 108**

<i>Location</i>	Zone 6
<i>Dimensions</i>	100 m by 2 m
<i>Excavated Area</i>	200 m <sup>2</sup>
<i>Excavated Orientation</i>	N to S
<i>Soil make-up</i>	Topsoil – dark reddish brown clay loam – 0.5 m; Colluvium – reddish brown silty gravel from 10 m to 27 m – 0.85 m
<i>Natural Subsoil</i>	Orange gravels
<i>Significant Features</i>	None
<i>Other Features</i>	None
<i>Finds</i>	None

**Trench 109**

<i>Location</i>	Zone 6
<i>Dimensions</i>	100 m by 2 m
<i>Excavated Area</i>	200 m <sup>2</sup>
<i>Excavated Orientation</i>	N to S
<i>Soil make-up</i>	Topsoil – dark reddish brown clay loam – 0.51 m
<i>Natural Subsoil</i>	Orangey brown sandy clay
<i>Significant Features</i>	None
<i>Other Features</i>	None
<i>Finds</i>	None

**Trench 110**

<i>Location</i>	Zone 6
<i>Dimensions</i>	75 m by 2 m
<i>Excavated Area</i>	150 m <sup>2</sup>
<i>Excavated Orientation</i>	N to S
<i>Soil make-up</i>	Topsoil – dark reddish brown clay loam – 0.6 m; Colluvium - reddish brown silty gravel from 13 m to 18.8 m – 1.1 m
<i>Natural Subsoil</i>	Orangey brown sandy clay
<i>Significant Features</i>	None
<i>Other Features</i>	None
<i>Finds</i>	None

**Trench 111**

<i>Location</i>	Zone 6
<i>Dimensions</i>	25 m by 2 m
<i>Excavated Area</i>	50 m <sup>2</sup>
<i>Excavated Orientation</i>	SW to NE
<i>Soil make-up</i>	Topsoil – dark reddish brown clay loam – 0.49 m
<i>Natural Subsoil</i>	Orangey brown sandy clay and gravel
<i>Significant Features</i>	None
<i>Other Features</i>	None
<i>Finds</i>	None

**Trench 112**

<i>Location</i>	Zone 6
<i>Dimensions</i>	50 m by 2 m
<i>Excavated Area</i>	100 m <sup>2</sup>
<i>Excavated Orientation</i>	S to N
<i>Soil make-up</i>	Topsoil – dark reddish brown clay loam – 0.48 m
<i>Natural Subsoil</i>	Dark brown/orange clayey gravel
<i>Significant Features</i>	None
<i>Other Features</i>	None
<i>Finds</i>	None

**Trench 113**

<i>Location</i>	Zone 6
<i>Dimensions</i>	25 m by 2 m
<i>Excavated Area</i>	50 m <sup>2</sup>
<i>Excavated Orientation</i>	W to E
<i>Soil make-up</i>	Topsoil – dark reddish brown clay loam – 0.42 m
<i>Natural Subsoil</i>	Orangey brown sandy clay
<i>Significant Features</i>	None
<i>Other Features</i>	None
<i>Finds</i>	None

**Trench 114**

<i>Location</i>	Zone 6
<i>Dimensions</i>	50 m by 2 m
<i>Excavated Area</i>	100 m <sup>2</sup>
<i>Excavated Orientation</i>	W to E
<i>Soil make-up</i>	Topsoil – dark reddish brown clay loam – 0.5 m
<i>Natural Subsoil</i>	Orangey brown sandy clay
<i>Significant Features</i>	None
<i>Other Features</i>	None
<i>Finds</i>	None

**Trench 115**

<i>Location</i>	Zone 6
<i>Dimensions</i>	15 m by 5 m
<i>Excavated Area</i>	75 m <sup>2</sup>
<i>Excavated Orientation</i>	E to W
<i>Soil make-up</i>	Topsoil – dark reddish brown clay loam – 0.42 m
<i>Natural Subsoil</i>	Orangey brown sandy clay
<i>Significant Features</i>	None
<i>Other Features</i>	None
<i>Finds</i>	None

**Trench 116**

<i>Location</i>	Zone 6
<i>Dimensions</i>	75 m by 2 m
<i>Excavated Area</i>	150 m <sup>2</sup>
<i>Excavated Orientation</i>	N to S
<i>Soil make-up</i>	Topsoil – dark reddish brown clay loam – 0.23 m
<i>Natural Subsoil</i>	Yellowish brown sandy clay until 11.6 m then orange clay and sandy clay until 24 m then orange and red degrading bedrock until 42 m then reddish brown clay until 48 m then bedrock
<i>Significant Features</i>	None
<i>Other Features</i>	None
<i>Finds</i>	None

**Trench 117**

<i>Location</i>	Zone 6
<i>Dimensions</i>	100 m by 2 m
<i>Excavated Area</i>	200 m <sup>2</sup>
<i>Excavated Orientation</i>	N to S
<i>Soil make-up</i>	Topsoil – dark reddish brown clay loam – 0.42 m
<i>Natural Subsoil</i>	Reddish brown clay until 33 m then orange sandy clay until 82 m then reddish brown clay
<i>Significant Features</i>	Post-med pit [11701]/[11702] at 37.8 m Pit [11703]/[11704] at 51.8 m Pit [11705]/[11706] at 53.8 m Ring ditch [8501] at 56.4 m to 64 m Internal pit [11707]/[11708] and [11709]/[11710] at 61 m Pit [11711]/[11712] at 64.4 m Pit [11713]/[11714] at 67.3 m
<i>Other Features</i>	None
<i>Finds</i>	None

**Trench 118**

<i>Location</i>	Zone 6
<i>Dimensions</i>	10 m by 5 m
<i>Excavated Area</i>	50 m <sup>2</sup>
<i>Excavated Orientation</i>	NW to SE
<i>Soil make-up</i>	Topsoil – dark reddish brown clay loam – 0.4 m
<i>Natural Subsoil</i>	Orange/pink sandy clay
<i>Significant Features</i>	None
<i>Other Features</i>	Ceramic tile drain at 0 m to 5 m aligned NE-SW
<i>Finds</i>	None

**Trench 119**

<i>Location</i>	Zone 6
<i>Dimensions</i>	75 m by 2 m
<i>Excavated Area</i>	150 m <sup>2</sup>
<i>Excavated Orientation</i>	NNW to SSE
<i>Soil make-up</i>	Topsoil – dark reddish brown clay loam – 0.44 m
<i>Natural Subsoil</i>	Orange/pink sandy clay
<i>Significant Features</i>	None
<i>Other Features</i>	None
<i>Finds</i>	None

**Trench 120**

<i>Location</i>	Zone 6
<i>Dimensions</i>	13 m by 2 m
<i>Excavated Area</i>	26 m <sup>2</sup>
<i>Excavated Orientation</i>	NNE to SSW
<i>Soil make-up</i>	Topsoil – dark reddish brown clay loam – 0.38 m
<i>Natural Subsoil</i>	Reddish brown clay until 8 m then orange sandy clay
<i>Significant Features</i>	None
<i>Other Features</i>	None
<i>Finds</i>	None

**Trench 121**

<i>Location</i>	Zone 6
<i>Dimensions</i>	17 m by 2 m
<i>Excavated Area</i>	34 m <sup>2</sup>
<i>Excavated Orientation</i>	NNE to SSW
<i>Soil make-up</i>	Topsoil – dark reddish brown clay loam – 0.53 m
<i>Natural Subsoil</i>	Reddish brown clay until 7.5 m then orangey brown sandy clay
<i>Significant Features</i>	Ditch [12101]/[12102] at 10 m
<i>Other Features</i>	None
<i>Finds</i>	None

**Trench 122**

<i>Location</i>	Zone 8
<i>Dimensions</i>	100 m by 2 m
<i>Excavated Area</i>	200 m <sup>2</sup>
<i>Excavated Orientation</i>	N to S
<i>Soil make-up</i>	Topsoil – dark brown clay loam – 0.4 m
<i>Natural Subsoil</i>	Light brown yellow clay
<i>Significant Features</i>	None
<i>Other Features</i>	Rubble drain at 51 m to 55.5 m aligned E-W
<i>Finds</i>	None



**Trench 123**

<i>Location</i>	Zone 8
<i>Dimensions</i>	50 m by 2 m
<i>Excavated Area</i>	100 m <sup>2</sup>
<i>Excavated Orientation</i>	ENE to WSW
<i>Soil make-up</i>	Topsoil – dark brown clay loam – 0.38 m
<i>Natural Subsoil</i>	Orange/pink clayey sand
<i>Significant Features</i>	None
<i>Other Features</i>	None
<i>Finds</i>	None

**Trench 124**

<i>Location</i>	Zone 8
<i>Dimensions</i>	50 m by 2 m
<i>Excavated Area</i>	100 m <sup>2</sup>
<i>Excavated Orientation</i>	N to S
<i>Soil make-up</i>	Topsoil – dark brown clay loam – 0.46 m
<i>Natural Subsoil</i>	Orange sandy clay until 25 m then orange clayey sand
<i>Significant Features</i>	None
<i>Other Features</i>	None
<i>Finds</i>	None

**Trench 125**

<i>Location</i>	Zone 8
<i>Dimensions</i>	50 m by 2 m
<i>Excavated Area</i>	100 m <sup>2</sup>
<i>Excavated Orientation</i>	ESE to WNW
<i>Soil make-up</i>	Topsoil – dark brown clay loam – 0.35 m
<i>Natural Subsoil</i>	Pink/orange clayey sand
<i>Significant Features</i>	None
<i>Other Features</i>	None
<i>Finds</i>	None

**Trench 126**

<i>Location</i>	Zone 8
<i>Dimensions</i>	50 m by 2 m
<i>Excavated Area</i>	100 m <sup>2</sup>
<i>Excavated Orientation</i>	ENE to WSW
<i>Soil make-up</i>	Topsoil – dark brown clay loam – 0.44 m
<i>Natural Subsoil</i>	Pink/orange clayey sand
<i>Significant Features</i>	None
<i>Other Features</i>	Furrow at 46 m to 48 m aligned NNW-SSE
<i>Finds</i>	None

**Trench 127**

<i>Location</i>	Zone 8
<i>Dimensions</i>	50 m by 2 m
<i>Excavated Area</i>	100 m <sup>2</sup>
<i>Excavated Orientation</i>	ENE to WSW
<i>Soil make-up</i>	Topsoil – dark brown clay loam – 0.35 m
<i>Natural Subsoil</i>	Pink/orange clayey sand
<i>Significant Features</i>	None
<i>Other Features</i>	Rubble drain at 3.6 m aligned SSE-NNW
<i>Finds</i>	None

**Trench 128**

<i>Location</i>	Zone 8
<i>Dimensions</i>	50 m by 2 m
<i>Excavated Area</i>	100 m <sup>2</sup>
<i>Excavated Orientation</i>	ESE to WNW
<i>Soil make-up</i>	Topsoil – dark brown clay loam – 0.5 m
<i>Natural Subsoil</i>	Pink/orange clayey sand
<i>Significant Features</i>	None
<i>Other Features</i>	None
<i>Finds</i>	None

**Trench 129**

<i>Location</i>	Zone 8
<i>Dimensions</i>	50 m by 2 m; 10 m by 4 m
<i>Excavated Area</i>	140 m <sup>2</sup>
<i>Excavated Orientation</i>	ESE to WNW
<i>Soil make-up</i>	Topsoil – dark brown clay loam – 0.4 m
<i>Natural Subsoil</i>	Orange sandy clay
<i>Significant Features</i>	[12901]/[12902] – Circular pit at 25.8 m
<i>Other Features</i>	Furrow at 12m, 20 m, 29 m and 37.7 m aligned NNW-SSE
<i>Finds</i>	None

**Trench 130**

<i>Location</i>	Zone 8
<i>Dimensions</i>	50 m by 2 m
<i>Excavated Area</i>	100 m <sup>2</sup>
<i>Excavated Orientation</i>	ENE to WSW
<i>Soil make-up</i>	Topsoil – dark brown clay loam – 0.45 m
<i>Natural Subsoil</i>	Light yellowish brown sandy clay until 8 m then pink/orange clayey sand
<i>Significant Features</i>	None
<i>Other Features</i>	None
<i>Finds</i>	None

**Trench 131**

<i>Location</i>	Zone 8
<i>Dimensions</i>	50 m by 2 m
<i>Excavated Area</i>	100 m <sup>2</sup>
<i>Excavated Orientation</i>	ENE to WSW
<i>Soil make-up</i>	Topsoil – dark brown clay loam – 0.36 m
<i>Natural Subsoil</i>	Pink/orange clayey sand
<i>Significant Features</i>	None
<i>Other Features</i>	None
<i>Finds</i>	None

**Trench 132**

<i>Location</i>	Zone 8
<i>Dimensions</i>	50 m by 2 m; 10 m by 5 m
<i>Excavated Area</i>	150 m <sup>2</sup>
<i>Excavated Orientation</i>	ESE to WNW
<i>Soil make-up</i>	Topsoil – dark brown clay loam – 0.41 m
<i>Natural Subsoil</i>	Pink/orange clayey sand
<i>Significant Features</i>	Small pit [13201]/[13202] at 40.6 m
<i>Other Features</i>	None
<i>Finds</i>	None

**Trench 133**

<i>Location</i>	Zone 8
<i>Dimensions</i>	50 m by 2 m
<i>Excavated Area</i>	100 m <sup>2</sup>
<i>Excavated Orientation</i>	ESE to WNW
<i>Soil make-up</i>	Topsoil – dark brown clay loam – 0.33 m
<i>Natural Subsoil</i>	Pink/orange clayey sand
<i>Significant Features</i>	None
<i>Other Features</i>	Furrow at 5 m, 30 m and 37 m aligned NNW-SSE
<i>Finds</i>	None

**Trench 134**

<i>Location</i>	Zone 8
<i>Dimensions</i>	50 m by 2 m
<i>Excavated Area</i>	100 m <sup>2</sup>
<i>Excavated Orientation</i>	WSW to ENE
<i>Soil make-up</i>	Topsoil – dark brown clay loam – 0.45 m
<i>Natural Subsoil</i>	Pink/orange clayey sand until 11 m then sandy clay with gravel patches from 26 m
<i>Significant Features</i>	None
<i>Other Features</i>	None
<i>Finds</i>	None

**Trench 135**

<i>Location</i>	Zone 8
<i>Dimensions</i>	35 m by 2 m
<i>Excavated Area</i>	70 m <sup>2</sup>
<i>Excavated Orientation</i>	WNW to ESE
<i>Soil make-up</i>	Topsoil – dark brown clay loam – 0.52 m
<i>Natural Subsoil</i>	Pink/orange clayey sand
<i>Significant Features</i>	None
<i>Other Features</i>	None
<i>Finds</i>	None

**Trench 136**

<i>Location</i>	Zone 8
<i>Dimensions</i>	50 m by 2 m; 10 m by 5 m
<i>Excavated Area</i>	150 m <sup>2</sup>
<i>Excavated Orientation</i>	ESE to WNW
<i>Soil make-up</i>	Topsoil – dark brown clay loam – 0.55 m
<i>Natural Subsoil</i>	Pink/orange clayey sand
<i>Significant Features</i>	Pit [13601]/[13602] at 23 m
<i>Other Features</i>	None
<i>Finds</i>	None

**Trench 137**

<i>Location</i>	Zone 8
<i>Dimensions</i>	100 m by 2 m
<i>Excavated Area</i>	200 m <sup>2</sup>
<i>Excavated Orientation</i>	N to S
<i>Soil make-up</i>	Topsoil – dark brown clay loam – 0.41 m
<i>Natural Subsoil</i>	Pink/orange sandy clay until 15 m then clayey sand
<i>Significant Features</i>	None
<i>Other Features</i>	Rubble drain at 71.7 m aligned NE-SW
<i>Finds</i>	None

**Trench 138**

<i>Location</i>	Zone 8
<i>Dimensions</i>	25 m by 2 m
<i>Excavated Area</i>	50 m <sup>2</sup>
<i>Excavated Orientation</i>	ESE to WNW
<i>Soil make-up</i>	Topsoil – dark brown clay loam – 0.37 m
<i>Natural Subsoil</i>	Pink/orange clayey sand
<i>Significant Features</i>	None
<i>Other Features</i>	None
<i>Finds</i>	None

**Trench 139**

<i>Location</i>	Zone 8
<i>Dimensions</i>	50 m by 2 m
<i>Excavated Area</i>	100 m <sup>2</sup>
<i>Excavated Orientation</i>	N to S
<i>Soil make-up</i>	Topsoil – dark brown clay loam – 0.33 m
<i>Natural Subsoil</i>	Pink/orange clayey sand
<i>Significant Features</i>	None
<i>Other Features</i>	Modern animal burial at 12.8 m
<i>Finds</i>	None

**Trench 140**

<i>Location</i>	Zone 8
<i>Dimensions</i>	100 m by 2 m
<i>Excavated Area</i>	200 m <sup>2</sup>
<i>Excavated Orientation</i>	N to S
<i>Soil make-up</i>	Topsoil – dark brown clay loam – 0.36 m
<i>Natural Subsoil</i>	Pink/orange clayey sand until 45 m then clayey sand
<i>Significant Features</i>	None
<i>Other Features</i>	None
<i>Finds</i>	None

**Trench 141**

<i>Location</i>	Zone 8
<i>Dimensions</i>	50 m by 2 m
<i>Excavated Area</i>	100 m <sup>2</sup>
<i>Excavated Orientation</i>	N to S
<i>Soil make-up</i>	Topsoil – dark brown clay loam – 0.36 m Colluvium – dark brown silty loam with stone inclusions from 38 m to 50 m – 0.69 m
<i>Natural Subsoil</i>	Pink/orange clayey sand until 39 m then orange sandy clay
<i>Significant Features</i>	None
<i>Other Features</i>	None
<i>Finds</i>	None

**Trench 142**

<i>Location</i>	Zone 8
<i>Dimensions</i>	50 m by 2 m
<i>Excavated Area</i>	100 m <sup>2</sup>
<i>Excavated Orientation</i>	ENE to WSW
<i>Soil make-up</i>	Topsoil – dark brown clay loam – 0.36 m Colluvium – dark brown silty loam with stone inclusions from 5 m to 20 m – 0.77 m
<i>Natural Subsoil</i>	Pink/orange clayey sand
<i>Significant Features</i>	None
<i>Other Features</i>	None
<i>Finds</i>	None

**Trench 143**

<i>Location</i>	Zone 8
<i>Dimensions</i>	75 m by 2 m
<i>Excavated Area</i>	150 m <sup>2</sup>
<i>Excavated Orientation</i>	NE to SW
<i>Soil make-up</i>	Topsoil – dark brown clay loam – 0.36 m Colluvium - dark brown silty loam with stone inclusions from 64 m to 75 m – 0.54 m
<i>Natural Subsoil</i>	Pink/orange clayey sand
<i>Significant Features</i>	None
<i>Other Features</i>	None
<i>Finds</i>	None

**Trench 144**

<i>Location</i>	Zone 8
<i>Dimensions</i>	50 m by 2 m
<i>Excavated Area</i>	100 m <sup>2</sup>
<i>Excavated Orientation</i>	ESE to WNW
<i>Soil make-up</i>	Topsoil – dark brown clay loam – 0.32 m
<i>Natural Subsoil</i>	Pink/orange clayey sand
<i>Significant Features</i>	None
<i>Other Features</i>	None
<i>Finds</i>	None

**Trench 145**

<i>Location</i>	Zone 8
<i>Dimensions</i>	50 m by 2 m
<i>Excavated Area</i>	100 m <sup>2</sup>
<i>Excavated Orientation</i>	ENE to WSW
<i>Soil make-up</i>	Topsoil – dark brown clay loam – 0.3 m
<i>Natural Subsoil</i>	Pink/orange clayey sand
<i>Significant Features</i>	Stone pad [14501] at 4.3 m Ditch [14502]/[14503] at 4.3 m
<i>Other Features</i>	None
<i>Finds</i>	None

**Trench 146**

<i>Location</i>	Zone 8
<i>Dimensions</i>	50 m by 2 m
<i>Excavated Area</i>	100 m <sup>2</sup>
<i>Excavated Orientation</i>	ENE to WSW
<i>Soil make-up</i>	Topsoil – dark brown clay loam – 0.31 m
<i>Natural Subsoil</i>	Pink/orange clayey sand with patches of yellowish brown sandy clay from 19 m
<i>Significant Features</i>	None
<i>Other Features</i>	None
<i>Finds</i>	None

**Trench 147**

<i>Location</i>	Zone 8
<i>Dimensions</i>	50 m by 2 m
<i>Excavated Area</i>	100 m <sup>2</sup>
<i>Excavated Orientation</i>	ENE to WSW
<i>Soil make-up</i>	Topsoil – dark brown clay loam – 0.41 m
<i>Natural Subsoil</i>	Pink/orange clayey sand with patches of yellow brown clay from 15.7 m
<i>Significant Features</i>	None
<i>Other Features</i>	None
<i>Finds</i>	None

**Trench 148**

<i>Location</i>	Zone 8
<i>Dimensions</i>	75 m by 2 m
<i>Excavated Area</i>	150 m <sup>2</sup>
<i>Excavated Orientation</i>	ENE to WSW
<i>Soil make-up</i>	Topsoil – dark brown clay loam – 0.36 m
<i>Natural Subsoil</i>	Pink/orange clayey sand
<i>Significant Features</i>	None
<i>Other Features</i>	None
<i>Finds</i>	None

**Trench 149**

<i>Location</i>	Zone 8
<i>Dimensions</i>	20 m by 2 m
<i>Excavated Area</i>	40 m <sup>2</sup>
<i>Excavated Orientation</i>	ENE to WSW
<i>Soil make-up</i>	Topsoil – dark brown clay loam – 0.33 m
<i>Natural Subsoil</i>	Pink/orange clayey sand
<i>Significant Features</i>	None
<i>Other Features</i>	None
<i>Finds</i>	None

**Trench 150**

<i>Location</i>	Zone 8
<i>Dimensions</i>	50 m by 2 m
<i>Excavated Area</i>	100 m <sup>2</sup>
<i>Excavated Orientation</i>	NE to SW
<i>Soil make-up</i>	Topsoil – dark brown clay loam – 0.32 m
<i>Natural Subsoil</i>	Pink/orange clayey sand
<i>Significant Features</i>	None
<i>Other Features</i>	None
<i>Finds</i>	None

**Trench 151**

<i>Location</i>	Zone 8
<i>Dimensions</i>	50 m by 2 m
<i>Excavated Area</i>	100 m <sup>2</sup>
<i>Excavated Orientation</i>	NE to SW
<i>Soil make-up</i>	Topsoil – dark brown clay loam – 0.35 m
<i>Natural Subsoil</i>	Pink/orange clayey sand with patches of yellowish brown clay until 34 m then pink silty sand and patches of yellowish brown clay
<i>Significant Features</i>	None
<i>Other Features</i>	None
<i>Finds</i>	None

**Trench 152**

<i>Location</i>	Zone 8
<i>Dimensions</i>	66 m by 2 m
<i>Excavated Area</i>	132 m <sup>2</sup>
<i>Excavated Orientation</i>	S to N
<i>Soil make-up</i>	Topsoil – dark brown clay loam – 0.33 m
<i>Natural Subsoil</i>	Orange clayey sand
<i>Significant Features</i>	None
<i>Other Features</i>	None
<i>Finds</i>	None

**Trench 153**

<i>Location</i>	Zone 8
<i>Dimensions</i>	75 m by 2 m
<i>Excavated Area</i>	150 m <sup>2</sup>
<i>Excavated Orientation</i>	NE to SW
<i>Soil make-up</i>	Topsoil – dark brown clay loam – 0.37 m
<i>Natural Subsoil</i>	Pink/orange clayey sand with patches of yellowish brown clay until 43 m then orange gravel seams in orange/pink clayey sand
<i>Significant Features</i>	None
<i>Other Features</i>	None
<i>Finds</i>	None



## APPENDIX 2: CONTEXT REGISTER

Context No.	Area	Description and Interpretation
4201	5/T42	Black stained silty clay with possible fragments of fired clay or daub within the deposit. Sits onto reddish brown clay subsoil. Dark deposits may indicate charcoal. Measures 0.26 m by 0.2 m by 0.03 m. <b>Possible prehistoric deposit</b>
4501	5/T45	Linear ditch with gently sloping sides onto a flat/concave base measuring 0.77 m by 0.07 m. Aligned E-W and filled by deposit [4502]. Cut through very compact reddish brown clay. <b>Probable field boundary ditch</b>
4502	5/T45	Moderately compact reddish brown clay loam. <b>Fill of ditch [4502]</b>
4801	5/T48	Oval shaped pit aligned SW-NE with very steep sides to NE and step to SW and concave base. Measures 0.97 m by 0.7 m by 0.31 m. Filled by deposit [4802]. <b>Probable modern or post-medieval pit</b>
4802	5/T48	Mid grey silt and fine gravel with orange clay lumps throughout and occasional small to medium stones. Measures 0.97 m by 0.7 m by 0.31 m. <b>Fill of pit [4801]</b>
8501	6/T85	Circular pit with steep sides and flat base measuring 0.42 m diameter and 0.08 m deep. <b>Probable prehistoric pit</b>
8502	6/T85	Greyish brown clayey silt with occasional small stones and lumps and flecks of charcoal. <b>Fill of pit [8501]</b>
8503	6/T85	Curvilinear cut with steep sides onto a concave base. Enters trench from the NW to SE and curving to S then exiting trench to SW. SW edge more ephemeral than NW most likely due to plough truncation. Measures 7.7 m by 0.86 m by 0.19 m. Also in T117. <b>Probable prehistoric ditch</b>
8504	6/T85	Greyish brown clayey silt with rare charcoal flecks and occasional medium small stones. <b>Fill of ditch [8503]</b>
8701	6/T87	Oval shaped cut with gently sloping sides onto flat base measuring 0.8 m by 0.57 m by 0.06 m. <b>Possible pit</b>
8702	6/T87	Dark grey silty clay. <b>Fill of pit [8701]</b>
8801	6/T88	Sub-circular/oval pit with steep sides onto concave base measuring 0.49 m by 0.4 m by 0.16 m. Situated 2 m to NW of modern pit [8803]. <b>Probable post medieval or modern pit</b>
8802	6/T88	Greyish brown gravelly silt. <b>Fill of pit [8801]</b>
8803	6/T88	Sub oval pit with steep sides and concave base measuring 0.77 m by 0.54 m by 0.15 m. <b>Probable post medieval or modern pit</b>
8804	6/T88	Greyish brown gravelly silt. <b>Fill of pit [8803]</b>
10301	6/T103	Circular shaped cut with moderately steep sides onto a flat base. Measures 0.63 m by 0.65 m by 0.05 m. Isolated in trench but close to round house in T85. <b>Probable prehistoric pit</b>
10302	6/T103	Dark brown silty clay with occasional charcoal inclusions. <b>Fill of pit [10301]</b>
10303	6/T103	Oval shaped cut with steep sides onto a flat base measuring 0.44 m by 0.61 m by 0.03 m. Cuts through or cut by post hole [10305] <b>Probable prehistoric post hole</b>
10304	6/T103	Dark brown silty clay with occasional charcoal inclusions. <b>Fill of pit [10303]</b>
10305	6/T103	Circular shaped cut in plan measuring 0.51 m by 0.49 m. <b>Probable prehistoric post hole</b>
10306	6/T103	Dark brown silty clay with occasional charcoal inclusions. <b>Fill of pit [10305]</b>
10307	6/T103	Oval shaped pit measuring 0.75 m by 0.45 m. <b>Probable prehistoric post hole</b>
10308	6/T103	Dark brown silty clay with occasional charcoal inclusions.

		<b>Fill of pit [10307]</b>
10309	6/T103	Circular shaped cut measuring 0.65 m by 0.55 m. <b>Probable prehistoric post hole</b>
10310	6/T103	Dark brown silty clay with occasional charcoal inclusions. <b>Fill of pit [10309]</b>
10311	6/T103	Oval shaped pit measuring 0.9 m by 0.65 m. <b>Probable prehistoric pit</b>
10312	6/T103	Dark brown silty clay with occasional charcoal inclusions. <b>Fill of pit [10311]</b>
10313	6/T103	Circular shaped cut measuring 0.45 m by 0.4 m. <b>Probable prehistoric pit</b>
10314	6/T103	Dark brown silty clay with occasional charcoal inclusions. <b>Fill of pit [10313]</b>
10315	6/T103	Dark brown silty clay with occasional charcoal inclusions. <b>Deposit within probable round house</b>
10316	6/T103	Curvilinear cut measuring 1 m by 0.3 m, aligned SW-NE. <b>Probable prehistoric ditch</b>
10317	6/T103	Dark brown silty clay with occasional charcoal inclusions. <b>Fill of pit [10316]</b>
10318	6/T103	Circular shaped cut measuring 0.3 m by 0.35 m. <b>Probable prehistoric pit</b>
10319	6/T103	Dark brown silty clay with occasional charcoal inclusions. <b>Fill of pit [10318]</b>
10401	6/T104	Amorphous linear deposit of dark grey silty clay with frequent charcoal inclusions measuring 1.1 m by 0.2 m by 0.02 m. <b>Possible animal burrowing</b>
10402	6/T104	Amorphous linear deposit of dark grey silty clay with frequent charcoal inclusions measuring 0.7 m by 0.1 m <b>Possible animal burrowing</b>
10403	6/T104	Oval shaped deposit of dark grey silty clay with frequent charcoal inclusions measuring 0.6 m by 0.2 m by 0.04 m. <b>Possible prehistoric deposit</b>
11701	6/T117	Sub-circular pit with moderate sides onto a concave base measuring 0.4 m by 0.3 m by 0.06 m. <b>Pit of unknown origins</b>
11702	6/T117	Dark greyish brown silty clay – similar to topsoil with no charcoal inclusions. <b>Fill of pit [11701]</b>
11703	6/T117	Circular pit measuring 0.71 m diameter. <b>Possible prehistoric pit</b>
11704	6/T117	Dark greyish brown silty clay with no obvious charcoal inclusions on surface. <b>Fill of pit [11703]</b>
11705	6/T117	Sub-oval cut measuring 1 m by 0.7 m. <b>Possible prehistoric pit</b>
11706	6/T117	Dark greyish brown silty clay with no obvious charcoal inclusions on surface. <b>Fill of pit [11705]</b>
11707	6/T117	Amorphous cut within ditch [8501] measuring 0.46 m by 0.28 m. <b>Internal feature of round house</b>
11708	6/T117	Dark grey silty clay with frequent charcoal. <b>Fill of [11707]</b>
11709	6/T117	Amorphous cut within ditch [8501] measuring 0.92 m by 0.41 m. <b>Internal feature of round house</b>
11710	6/T117	Dark grey silty clay with frequent charcoal. <b>Fill of [11709]</b>
11711	6/T117	E edge of sub-circular cut to immediate S of [8501] measuring 0.8 m by 0.35 m (+). <b>Probable prehistoric pit</b>
11712	6/T117	Greyish brown silty clay with rare charcoal flecks. <b>Fill of [11711]</b>
11713	6/T117	Circular cut with steep sides onto a concave base measuring 0.46 m diameter.

		<b>Probable prehistoric pit</b>
11714	6/T117	Greyish brown silty clay with rare charcoal flecks. <b>Fill of [11713]</b>
12101	6/T121	Linear cut aligned NNW-SSE, measuring 1.4 m wide. <b>Probable furrow</b>
12102	6/T121	Brown clayey silt. <b>Fill of furrow [12101]</b>
12901	8/T129	Circular pit with steep sides onto an irregular base with a large natural boulder in-situ in centre of pit. Measures 1.7 m by 1.51 m by 0.41 m at WNW point of boulder. 0.2 m deep at section edge. Boulder is 0.12 m from top of the pit at subsoil level. <b>Post medieval pit</b>
12902	8/T129	Dark brown sandy clay loam – very similar to topsoil <b>Fill of pit [12901]</b>
13201	8/T132	Circular pit measuring 0.28 m by 0.23 m (similar to pit [13601]) <b>Possible post-med or modern post hole</b>
13202	8/T132	Brown silty sand with occasional charcoal fleck inclusions <b>Fill of pit [13201]</b>
13601	8/T136	Circular pit with steep sides onto a concave base measuring 0.35 m by 0.29 m by 0.1 m. <b>Possible post-med or modern post hole</b>
13602	8/T136	Brown silty sand <b>Fill of pit [13601]</b>
14501	8/T145	Rectangular shaped group of stones consisting of large rounded and angular stones placed within topsoil and covered by it. Aligned NW-SE and measures 2.25 m by 1.25 m by 0.13 m. Ditch [14502] to the SE edge. <b>Post medieval stone platform or foundation pad</b>
14502	8/T145	Curvilinear ditch with moderate sides and flat base associated with stone pad [14501]. Aligned NW-SE from edge of [14501] then curves to the S and exits trench. Not visible in trenches to S and SW. Measures 5 m (+) by 1.4 m by 0.2 m. <b>Post medieval drainage ditch</b>
14503	8/T145	Brown sandy clay loam, very similar to topsoil. <b>Fill of ditch [14502]</b>

## APPENDIX 3: PHOTOGRAPHIC REGISTERS

Frame	Description	From	Date
1-6	Pre-ex shots of Zone 4	Var	10/10/16
7	SW-facing section of T2 showing dumped material	SW	10/10/16
8	Post-ex view of T2	S	10/10/16
9	Post-ex view of T4	NW	10/10/16
10	Post-ex view of T1	SW	10/10/16
11	Post-ex view of T3	SSW	10/10/16
12	Post-ex view of T5	S	10/10/16
13-15	Pre-ex view of Zone 4	Var	10/10/16
16	Post-ex view of T7	NE	10/10/16
17	Post-ex view of T6	N	10/10/16
18	Post-ex view of T8	N	10/10/16
19	Post-ex view of T9	NE	10/10/16
20	Post-ex view of T10	N	10/10/16
21	Post-ex view of T11	S	10/10/16
22-23	Shots showing backfilled trenches	Var	10/10/16
24	Pre-ex view of Zone 3	W	11/10/16
25-26	Shots showing erected goal posts in Zone 3	W	11/10/16
27-29	Pre-ex shots of Zone 3	Var	11/10/16
30	Post-ex view of T13	SE	11/10/16
31	Post-ex view of T12	NW	11/10/16
32	Post-ex view of T14	S	11/10/16
33	Post-ex view of T15	E	11/10/16
34-35	Pre-ex view of Zone 3	Var	11/10/16
36-38	Post-ex view of trenches in Zone 3	Var	11/10/16
39	Post-ex view of T16	SE	11/10/16
40	Post-ex view of T17	SE	11/10/16
41	Post-ex view of T18	SW	11/10/16
42	Post-ex view of T19	E	11/10/16
43	Post-ex view of T20	SE	11/10/16
44	Post-ex view of T21	W	11/10/16
45	Post-ex view of T22	NW	11/10/16
46	Post-ex view of T23	N	11/10/16
47	Post-ex view of T24	S	11/10/16
48	Post-ex view of T25	N	11/10/16
49	Post-ex view of T26	NW	12/10/16
50-61	Views of pig sty area in Zone 4	Var	12/10/16
62	Post-ex view of T28	S	12/10/16
63	Post-ex view of T30	W	12/10/16
64	Post-ex view of T27	S	12/10/16
65	Post-ex view of T29	N	12/10/16
66	Post-ex view of T31	S	12/10/16
67	Post-ex view of T33	S	12/10/16
68	Post-ex view of T32	E	12/10/16
69-71	Views of Zone 3 backfilled	Var	12/10/16
72	Post-ex view of T35	SW	12/10/16
73	Post-ex view of T34	S	12/10/16
74	Post-ex view of T36	S	12/10/16
75	Post-ex view of T37	SW	12/10/16
76	Post-ex view of T39	W	12/10/16
77	Post-ex view of T38	SW	12/10/16
78	Post-ex view of T40	EE	12/10/16
79	Post-ex view of T41	W	12/10/16

80-83	Views of pig sty area backfilled	Var	12/10/16
84	Post-ex view of T43	SE	13/10/16
85	Post-ex view of T45	SE	13/10/16
86	Post-ex view of T47	SE	13/10/16
87	Post-ex view of T42	N	13/10/16
88	Post-ex view of T44	S	13/10/16
89-90	Views of deposit [4201]	S/W	13/10/16
91	Post-ex view of T49	NW	13/10/16
92	Post-ex view of T51	NW	13/10/16
93	View of curving rubble drain in T44	S	13/10/16
94	Post-ex view of T53	NW	13/10/16
95	Views along ditch [4501]	E	13/10/16
96	W-facing section of ditch [4501]	W	13/10/16
97	Post-ex view of T46	SE	13/10/16
98	Post-ex view of T48	SE	13/10/16
99	SE-facing section of pit [4801]	SE	13/10/16
100	General view of pit [4801]	NE	13/10/16
101	Post-ex view of T50	SW	13/10/16
102	Post-ex view of T52	SW	13/10/16
103	Post-ex view of T54	SW	13/10/16
104-106	Pre-ex shots of Zone 5	N	14/10/16
107	Post-ex view of T55	NE	14/10/16
108	Post-ex view of T56	SW	14/10/16
109	Post-ex view of T62	S	17/10/16
110	Post-ex view of T63	N	17/10/16
111	Post-ex view of T64	S	17/10/16
112	Post-ex view of T65	S	17/10/16
113	Post-ex view of T66	N	17/10/16
114	Post-ex view of T67	ENE	17/10/16
115	Post-ex view of T68	ENE	17/10/16
116	Post-ex view of T69	ENE	17/10/16
117	Post-ex view of T70	S	17/10/16
118	Post-ex view of T71	NW	17/10/16
119	Post-ex view of T72	SE	17/10/16
120	Post-ex view of T73	NW	17/10/16
121	Post-ex view of T74	W	18/10/16
122	Post-ex view of T75	NE	18/10/16
123	Post-ex view of T77	SW	18/10/16
124	Post-ex view of T76	E	18/10/16
125	Post-ex view of T79	W	18/10/16
126	Post-ex view of T81	SE	18/10/16
127	Post-ex view of T82	SE	18/10/16
128	Post-ex view of T78	S	18/10/16
129	Post-ex view of T80	N	18/10/16
130-132	Pre-ex views of Zone 6 from NW corner	Var	18/10/16
133-137	Pre-ex views of Zone 6 from W edge	Var	18/10/16
138-146	Post-ex view of Zone 5	Var	18/10/16
147	Post-ex view of T83	S	18/10/16
148	Post-ex view of T84	W	18/10/16
149	Post-ex view of T86	W	18/10/16
150	Post-ex view of T85	S	18/10/16
151	WSW facing section of pit [8501]	WSW	18/10/16
152-153	General views of pit [8503]	Var	18/10/16
154-155	General views of ditch [8503]	Var	18/10/16
156	SE-facing section of ditch [8503]	SE	18/10/16
157	Post-ex view of T87	SE	19/10/16



158	Post-ex view of T89	NE	19/10/16
159	Post-ex view of T88	SE	19/10/16
160	Post-ex view of T90	NE	19/10/16
161	NW-facing section of pit [8701]	NW	19/10/16
162	ESE-facing section of pit [8801]	ESE	19/10/16
163-164	General view of pit [8801]	Var	19/10/16
165	General view of pit [8803] – modern	WNW	19/10/16
166	Post-ex view of T91	SE	19/10/16
167	Post-ex view of T93	NE	19/10/16
168	Post-ex view of T92	NW	19/10/16
169	Post-ex view of T94	NE	19/10/16
170	Post-ex view of T96	N	20/10/16
171	Post-ex view of T95	SE	20/10/16
172	Post-ex view of T97	NE	20/10/16
173	Post-ex view of T99	SE	20/10/16
174	Post-ex view of T98	SE	20/10/16
175	Post-ex view of T101	SW	20/10/16
176	Post-ex view of T100	NE	20/10/16
177	Post-ex view of T103	SE	20/10/16
178	W-facing section of pit [10301]	W	20/10/16
179-180	General view of pit [10301]	Var	20/10/16
181	Post-ex view of T105	NE	20/10/16
182	General view of round house features	NW	20/10/16
183	General view of round house features	W	20/10/16
184	General view of round house features	S	20/10/16
185-186	Curvilinear [10316] in T103	Var	20/10/16
187	W-facing section of post hole [10303]	W	20/10/16
188-189	General views of P/hole [10303] and [10305]	Var	20/10/16
190	Post-ex view of T106	NE	21/10/16
191	Post-ex view of T107	E	21/10/16
192	Post-ex view of T104	SE	21/10/16
193	Deposit [10403]	NE	21/10/16
194	Deposit [10402]	NE	21/10/16
195	Deposit [10401]	SE	21/10/16
196	Post-ex view of T102	N	21/10/16
197	Connection between T102 and T103	W	21/10/16
198	Post-ex view of T109	S	24/10/16
199	Post-ex view of T108	S	24/10/16
200	Post-ex view of T110	S	24/10/16
201	Post-ex view of T111	E	24/10/16
202	Post-ex view of T112	N	24/10/16
203	Post-ex view of T113	W	24/10/16
204	Post-ex view of T114	NW	24/10/16
205	Post-ex view of T115	NW	24/10/16
206	Post-ex view of T117	N	24/10/16
207	Post-ex view of T116	NW	24/10/16
208	Post-ex view of T118	W	24/10/16
209	Post-ex view of T119	E	24/10/16
210	SE-facing section of [11701]	SE	24/10/16
211	General view of [11701]	NE	24/10/16
212	General view of pits [11703] and [11705]	SW	24/10/16
213	Internal features [11707] and [11709]	S	24/10/16
214-215	General views of ditch [8501] in T117	Var	24/10/16
216	SE-facing section of ditch [8503]	SE	24/10/16
217	General view of ditch [8503] terminus	SE	24/10/16
218	N-facing section of pit [11713]	N	24/10/16

219	View of pit [11713]	N	24/10/16
220-221	Views of pit [11711]	W	24/10/16
222	Post-ex view of T120	SE	24/10/16
223	Furrow in T121	SSE	24/10/16
224	Terram over roundhouse	S	24/10/16
225-230	Post-ex views of Zone 6	Var	24/10/16
231-233	Pre-ex shots of Zone 8	Var	25/10/16
234	Post-ex view of T122	S	25/10/16
235	Post-ex view of T127	WSW	25/10/16
236	Post-ex view of T125	ESE	25/10/16
237	Post-ex view of T123	WSW	25/10/16
238	Post-ex view of T124	S	25/10/16
239	Post-ex view of T129	WNW	26/10/16
240	Post-ex view of T126	WSW	26/10/16
241	Post-ex view of T131	WSW	26/10/16
242	Post-ex view of T128	WNW	26/10/16
243	Post-ex view of T133	WNW	26/10/16
244	Post-ex view of T130	WSW	26/10/16
245	Post-ex view of T132	WNW	26/10/16
246	Post-ex view of T134	WSW	26/10/16
247	Post-ex view of T136	WNW	26/10/16
248	WNW-facing section of pit [12901]	WNW	26/10/16
249-250	General view of pit [12901]	Var	26/10/16
251	Post-ex view of T135	WNW	26/10/16
252	Post-ex view of T137	S	26/10/16
253	Post-ex view of T138	WNW	26/10/16
254	View of pit [13601]	E	26/10/16
255	E-facing section of pit [13601]	E	26/10/16
256-257	Views of pit [13201]	Var	26/10/16
258	Area extended around it [13201]	WNW	26/10/16
259	Post-ex view of T140	S	27/10/16
260	Post-ex view of T139	S	27/10/16
261	Post-ex view of T142	WSW	27/10/16
262	Post-ex view of T141	S	27/10/16
263	Post-ex view of T144	WNW	27/10/16
264	Post-ex view of T143	SW	27/10/16
265	Post-ex view of T145	SW	27/10/16
266-267	Post-ex views along T146	WSW	27/10/16
268-269	Post-ex views along T147	WSW	27/10/16
270-271	Post-ex views along T148	WSW	27/10/16
272	Post-ex view of T150	SW	27/10/16
273-277	Stone pad [14501] of ditch [14502]	Var	27/10/16
278	Post-ex view of T151	SW	28/10/16
279	Post-ex view of T152	N	28/10/16
280	Post-ex view of T153	SW	28/10/16
281-285	Views of backfilled trenches in Zone 8	Var	28/10/16

**APPENDIX 4: DRAWING REGISTER**

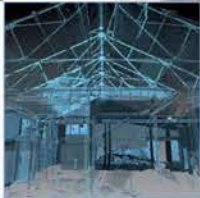
Drawing No.	Feature No.	Details	Scale
1	[4201]	Plan of deposit [4201]	1:50
2	[4501]	Plan of ditch [4501]	1:50
3	[4501]	W-facing section of ditch [4501]	1:10
4	[4801]	Plan of pit [4801]	1:50
5	[4801]	SE-facing section of pit [4801]	1:10
6	[8501]	WSW-facing section of pit [8501]	1:10
7	[8503]	SE-facing section of ditch [8503]	1:10
8		Plan of features in T85	1:50
9	[8701]	Plan of pit [8701]	1:50
10	[8701]	WSW-facing section of pit [8701]	1:10
11	[8801]	SSE-facing section of pit [8801]	1:10
12		Plan of pits [8801] and [8803]	1:50
13	[10301]	Plan of T103 showing pit [10301]	1:50
14	[10301]	WSW-facing section of pit [10301]	1:10
15		Plan of T103 showing feature [10303], [10305] etc	1:50
16		Plan of features in T104	1:50
17		Plan of features in T117	1:50
18	[11701]	SE-facing section of pit [11701]	1:10
19	[8503]	SE-facing section of ditch [8503]	1:10
20	[11703]	NW-facing section of pit [11703]	1:10
21	[13601]	Plan of [13601]	1:50
22	[13601]	E-facing section of pit [13601]	1:10
23	[13201]	Plan of [13201]	1:50
24	[12901]	WNW-facing section of pit [12901]	1:10
25	[12901]	Plan of pit [12901] in T129	1:50
26	[14501]/[14502]	Plan of [14501] and [14502]	1:50
27	[14501]/[14502]	SE-facing section of [14501] and [14502]	1:10

**APPENDIX 5: SAMPLES REGISTER**

Context No.	Quantity (litres)
4201	1
4502	10
4802	10
8502 (T85)	10
8502 (T117)	10
8504	10
8702	10
8802	10
10304	10
10302	10
10403	10
11702	10
11714	10
12902	10
13602	10

**APPENDIX 6: 'DISCOVERY AND EXCAVATION IN SCOTLAND' REPORT**

<b>LOCAL AUTHORITY:</b>	Aberdeenshire Council
<b>PROJECT TITLE/SITE NAME:</b>	Fasque House Estate
<b>PROJECT CODE:</b>	22736
<b>PARISH:</b>	Fettercairn
<b>NAME OF CONTRIBUTOR:</b>	Kevin Paton
<b>NAME OF ORGANISATION:</b>	AOC Archaeology Group
<b>TYPE(S) OF PROJECT:</b>	Evaluation
<b>NMRS NO(S):</b>	N/A
<b>SITE/MONUMENT TYPE(S):</b>	N/A
<b>SIGNIFICANT FINDS:</b>	None
<b>NGR (2 letters, 6 figures)</b>	NO 64640 75925
<b>START DATE (this season)</b>	10 <sup>th</sup> October 2016
<b>END DATE (this season)</b>	28 <sup>th</sup> October 2016
<b>PREVIOUS WORK (inc DES)</b>	Desk Based Assessment (AOC 2010)
<b>MAIN (NARRATIVE) DESCRIPTION:</b> (May include information from other fields)	<p>An archaeological evaluation was undertaken by AOC Archaeology Group on land due for residential development within Fasque House Estate, Fettercairn, Aberdeenshire.</p> <p>The evaluation took place throughout five zones at the north edge of the Fasque House Estate. Zone 3 and 4 contained no significant archaeology. Zones 5, 6 &amp; 8 all contained post medieval features, mainly pits, but with a probable field boundary also present in Zone 5, and a stone platform and ditch in Zone 8.</p> <p>Zone 6 was revealed to contain two areas of possible prehistoric activity that most likely represents two possible round houses. One of these houses was situated on a high point at the western edge of the zone, with the other in a lower area approximately 50 m to the east. The upper house consisted of a ring ditch with several associated pits around the outside. The lower house consisted of an arc of probable post holes with other pit features nearby.</p>
<b>PROPOSED FUTURE WORK:</b>	Yes
<b>CAPTION(S) FOR ILLUSTRATIONS:</b>	N/A
<b>SPONSOR OR FUNDING BODY:</b>	Fasque House Properties Ltd
<b>ADDRESS OF MAIN CONTRIBUTOR:</b>	AOC Archaeology Group Edgefield Road Industrial Estate Loanhead, Midlothian, EH20 9SY
<b>EMAIL ADDRESS:</b>	admin@aocarchaeology.com
<b>ARCHIVE LOCATION</b>	Archive to be deposited in NMRS



**AOC Archaeology Group**, Edgefield Industrial Estate, Edgefield Road, Loanhead EH20 9SY  
tel: 0131 440 3593 | fax: 0131 440 3422 | e-mail: [edinburgh@aocarchaeology.com](mailto:edinburgh@aocarchaeology.com)

[www.aocarchaeology.com](http://www.aocarchaeology.com)