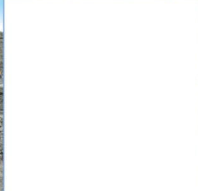
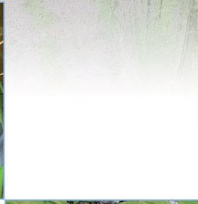
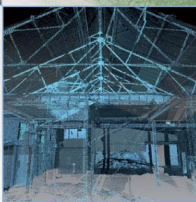
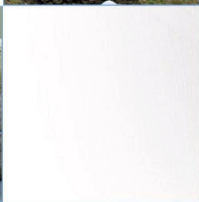
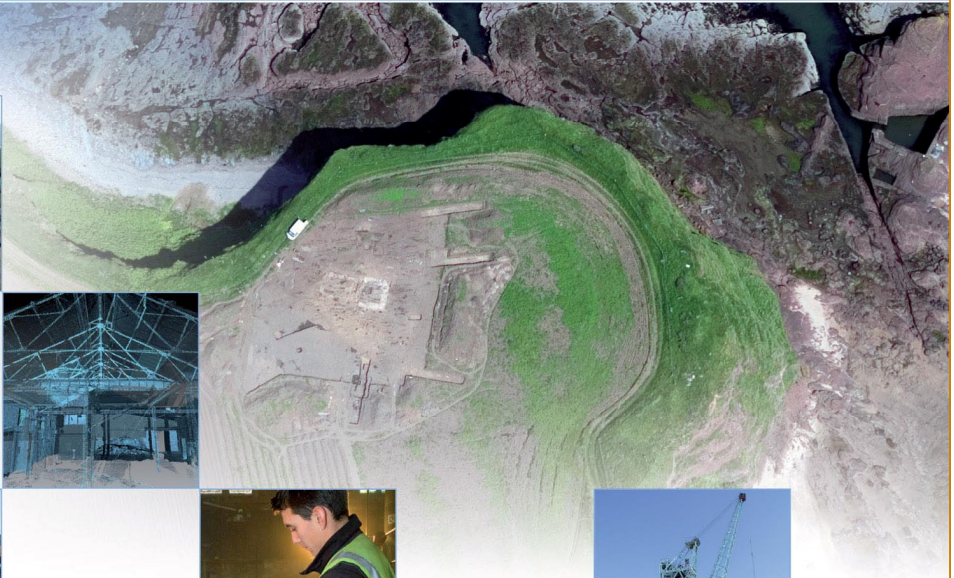
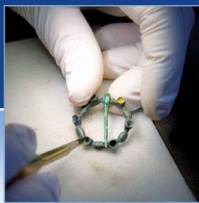


# Ayr Cemetery, South Ayrshire: Archaeological Excavation Data Structure Report

AOC 23613  
2<sup>nd</sup> December 2016



# Ayr Cemetery, South Ayrshire: Archaeological Excavation Data Structure Report

---

**On Behalf of:** South Ayrshire Council  
County buildings  
Wellington Square  
Ayr  
KA7 1DR

**National Grid Reference (NGR):** NS 35275 21025

**AOC Project No:** 23613

**OASIS No.:** 270251

**Prepared by:** Kevin Paton

**Date of Fieldwork:** November and December 2016

**Date of Report:** December 2016

This document has been prepared in accordance with AOC standard operating procedures.

**Author:** Kevin Paton

**Date:** December 2016

**Approved by:**

**Date:** December 2016

**Draft/Final Report Stage:** Draft

**Date:** December 2016

**Enquiries to:** AOC Archaeology Group  
Edgefield Industrial Estate  
Edgefield Road  
Loanhead  
EH20 9SY

Tel. 0131 440 3593  
Fax. 0131 440 3422  
e-mail. [edinburgh@aocarchaeology.com](mailto:edinburgh@aocarchaeology.com)



[www.aocarchaeology.com](http://www.aocarchaeology.com)

---

## Contents

	<b>Page</b>
List of Illustrations .....	2
List of Plates .....	2
List of Appendices .....	2
<b>ABSTRACT</b> .....	<b>3</b>
<b>1 INTRODUCTION</b> .....	<b>4</b>
1.1 Background .....	4
1.2 Site Location.....	4
1.3 Historical Background.....	4
<b>2 OBJECTIVES</b> .....	<b>4</b>
<b>3 METHODOLOGY</b> .....	<b>4</b>
<b>4 RESULTS</b> .....	<b>5</b>
4.4 Post medieval features .....	5
4.5 Prehistoric features.....	5
<b>5 DISCUSSION</b> .....	<b>11</b>
<b>6 CONCLUSION AND RECOMENDATIONS</b> .....	<b>11</b>
<b>7 REFERENCES</b> .....	<b>11</b>
<b>APPENDIX 1: CONTEXT REGISTERS</b> .....	<b>13</b>
<b>APPENDIX 2: PHOTOGRAPHIC REGISTERS</b> .....	<b>15</b>
<b>APPENDIX 3: DRAWING REGISTER</b> .....	<b>17</b>
<b>APPENDIX 4: FINDS REGISTER</b> .....	<b>18</b>
<b>APPENDIX 5: SAMPLES REGISTER</b> .....	<b>18</b>
<b>APPENDIX 6: 'DISCOVERY AND EXCAVATION IN SCOTLAND' REPORT</b> .....	<b>19</b>

## List of Illustrations

Figure 1: Site Location

Figure 2: Plan of features within excavation area

Figure 3: Sections of prehistoric features

## List of Plates

Plate 1: General view of modern cemetery pit

Plate 2: W-facing section of ditch [005]

Plate 3: General view of pit [009]

Plate 4: General view of pit [011]

Plate 5: General view of pit [013]

Plate 6: General view of pit [015]

Plate 7: General view of ditch [003]

Plate 8: General view of ditch [007]

## List of Appendices

Appendix 1: Context Register

Appendix 2: Photographic Register

Appendix 3: Drawing Register

Appendix 4: Finds Register

Appendix 5: Samples Register

Appendix 6: Discovery and Excavation in Scotland Report

## ABSTRACT

---

An archaeological excavation was undertaken by AOC Archaeology Group on land due to be used for the extension of Ayr Cemetery, South Ayrshire.

The excavation area was positioned around the features found from an earlier evaluation undertaken by AOC Archaeology in 2016 and measured approximately 3600 m<sup>2</sup>. The excavations revealed four small rounded pits, two linear pits and two larger linear ditches that are possibly prehistoric in date. The features produced worked flint, burnt bone and some possible worked shale and quartz fragments. It is likely that these features may relate to early agricultural use, with the ditches being possible prehistoric field boundaries.

Other features on site relate to post medieval agricultural use, with one E-W ditch representing a field boundary with ceramic tile drains and furrows on either side. Some modern activity was also noted in the form of several clay filled pits that contained modern material. These related to the dumping of excess soil from cemetery excavations into machine cut pits that were extracting sandier soils for backfilling the graves.

It is recommended that further mitigation be conducted to meet the post excavation requirements outlined in the Written Scheme of Investigation Addendum (AOC 2016). The exact nature of this work will be detailed in a Post-Excavation Research Design (PERD) to be approved by the West of Scotland Archaeology Service (WoSAS), who advise South Ayrshire Council on archaeological matters.

## 1 INTRODUCTION

### 1.1 Background

1.1.1 An archaeological excavation was required by South Ayrshire Council on land due to be used for the extension of Ayr Cemetery, after an earlier evaluation revealed the potential for prehistoric archaeology within part of the site. The scope of the works was determined by South Ayrshire Council as advised on archaeological matters by the West of Scotland Archaeology Service (WoSAS). The works were conducted according to the terms of a *Written Scheme of Investigation Addendum* (AOC 2016), approved on behalf of South Ayrshire Council by WoSAS and in accordance with *Scottish Planning Policy* (Scottish Government 2014) and *PAN 2/2011 Planning And Archaeology* (Scottish Government 2011).

### 1.2 Site Location

1.2.1 The cemetery extension site is located to the immediate east of the current cemetery and comprises a rectangular grass field (NGR: NS 35275 21025; Figure 1). The site is bounded by the back gardens of houses to the east and south, with Holmston Road situated to the north.

### 1.3 Historical Background

1.3.1 No recorded archaeological sites are known to occur either within the development area. Archaeological work carried out on the opposite bank of the river Ayr to the north of the site uncovered four groups of prehistoric archaeological features (Arabaolaza 2015). These groups consisted of pits and/or post holes, with two groups being possible structures due to the oval arrangements of the features. Pottery fragments and lithics were recovered from the majority of the features. Dating evidence from the groups suggest the area could have been used from the early Neolithic (4300 to 4800 BC) to the Bronze Age (2200 to 800 BC).

1.3.2 The archaeological evaluation (2016) revealed several small pits and large ditches that may relate to prehistoric activity on site with a worked flint fragment found within one of the pits (Paton 2016).

## 2 OBJECTIVES

2.1 The objectives of the archaeological excavation were:

- i) to expose the surviving archaeology within the development area through the application of a controlled strip around the designated area, with the possibility of expansion to provide a 10 m buffer around boundary features;
- ii) the excavation and recording of all significant archaeological features within the area;

## 3 METHODOLOGY

3.1 The excavation involved the topsoil strip of an approximate 60 m by 60 m area around the features previously found by the evaluation (Figure 2). The work was conducted utilising a 13 tonne tracked excavator equipped with a bladed ditching bucket, and operating under the constant supervision of an experienced field archaeologist. All potential features were investigated, photographed and recorded using AOC *pro-forma* recording sheets and then surveyed.

## 4 RESULTS

4.1 All archaeological works were conducted between the 21<sup>st</sup> and 30<sup>th</sup> November 2016. Weather conditions were generally fair throughout the course of the work conducted meaning that archaeological visibility was good. The various data gathered from the evaluation are presented as a series of appendices:

- Appendix 1: Context Register;
- Appendix 2: Photographic Register;
- Appendix 3: Drawing Register
- Appendix 4: Find Register
- Appendix 5: Samples Register
- Appendix 6: '*Discovery and Excavation in Scotland*' entry

4.2 The topsoil throughout the excavation area consisted of a dark greyish brown sand and clay loam which overlay predominantly orange sand and gravel subsoil. Some areas of made ground consisting of grey and yellow clay with some modern dumped material was encountered in the southern half of the excavation area. This material had previously been banded on site by the cemetery workers and was later spread out over the area to remove the bund. Furthermore, in an area covering the southern edge and up to 30 m from it, a former plough soil survived underneath the topsoil, measuring up to 0.2 m thick in places.

4.3 Several modern pits in the form of rectangular scoops filled with clay and modern material were revealed along the southern and western edges (Figure 2; Plate 1). In communication with the cemetery workers it was revealed that these relate to the removal of sandier soils to fill in newly excavated graves as the clay that they had removed from the graves was less suitable for backfilling. Two modern site investigation pits were also found within the excavation area.

### 4.4 Post medieval features

4.4.1 A large ditch [005] aligned E-W crossing the centre of the excavation area was revealed, containing 18<sup>th</sup>/19<sup>th</sup> century glass and white ceramics (Figure 2). The ditch extended to the E out of the excavation area but was not seen along the western edge and was possibly ploughed out. The ditch was between 0.65 m to 0.9 m wide and 0.18 m to 0.25 m deep (Plate 2). Ceramic tile drains stopped short of crossing the ditch to the north and furrows to the south also respected the ditch location.

4.4.2 Another post medieval ditch feature [017] was also recorded to the north of ditch [005] that ran parallel to it. This ditch appeared to connect to the south end of a ceramic field drain, with a large rectangular pit cutting both features where they would have connected. It also cut through an earlier pit feature [015].

### 4.5 Prehistoric features

4.5.1 A number of probable prehistoric features were found within the excavation area. These included two long ditches, two short linear pits, and four circular/sub-circular pits [009–011-013-015] (Figure 2&3). The four pits were spread throughout the excavation area. Pits [009] and [011] were both kidney shaped and both contained worked flint fragments, with pit [011] also containing heat affected sand throughout the fill [012] (Plate 3&4). Pit [015] contained several small pieces of burnt bone and some charcoal flecks, with pit [013] containing large patches of charcoal rich deposits throughout (Plate 5&6).

4.5.2 The fill of pit [013] was very similar to that of linear pit [021], which was 90% excavated in the evaluation, with dimensions measuring 0.6 m by 0.24 m by 0.08 m. The other small linear feature

[019] was 1.96 m long by 0.52 m wide and contained limited amounts of charcoal flecking and appeared to have been ploughed out to the east rather than terminating.

4.5.3 The two main features in the excavation were ditches [003] and [007] (Plate 7&8). Ditch [007] was aligned E-W, terminating at both ends within the excavation area. It measured 29.3 m long by 0.55 m to 1 m wide and up to 0.36 m deep. It was filled with a dark greyish brown silty sand with occasional charcoal fleck inclusions, but contained no artefacts that could help to provide a date for the feature. Ditch [003] connects into [007] approximately 4 m from its eastern edge and as such is most likely contemporary with it.

4.5.4 This ditch is aligned SW to NE, curving to the NNE near its connection to ditch [007]. It measures 38 m long and 0.88 m to 1 m wide and up to 0.4 m deep, and continues SW out of the excavation area. It is filled with mottled grey and orange sandy silt with occasional charcoal inclusions and a potentially worked quartz flake and two pieces of worked shale were found within it. The ditch is cut by a N-S aligned furrow and also by a ceramic tile drain near the SW edge of the excavation area.

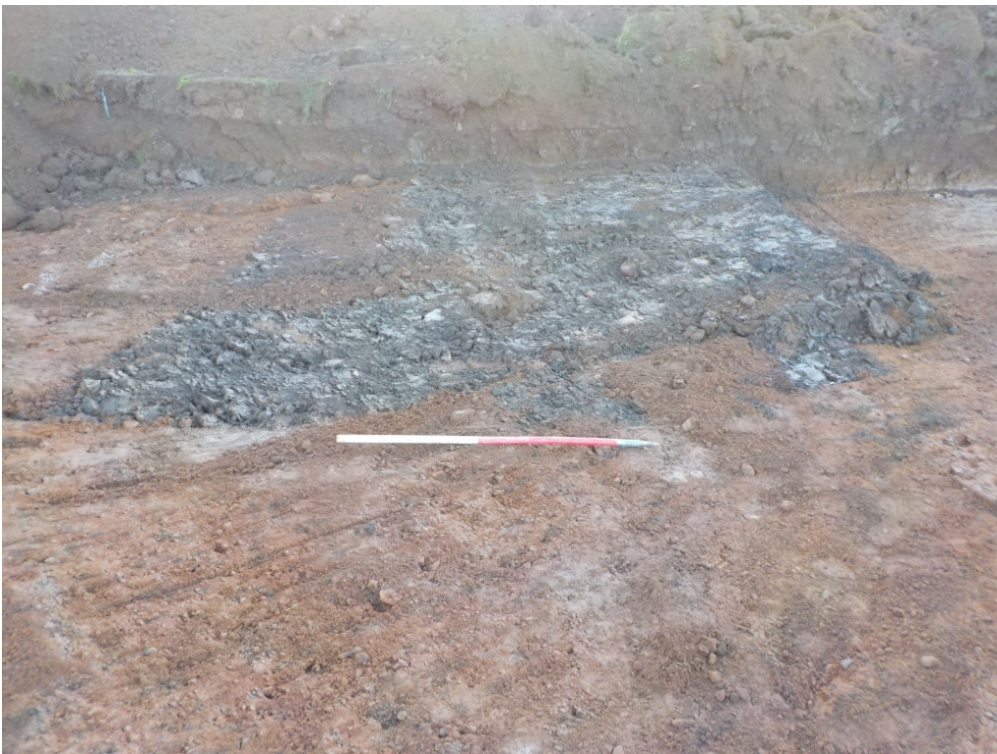


Plate 1 - General view of modern cemetery pit





Plate 2 - W-facing section of ditch [005]



Plate 3 - General view of pit [009]



Plate 4 - General view of pit [011]



Plate 5 - General view of pit [013]



Plate 6 - General view of pit [015]



Plate 7 - General view of ditch [003]



Plate 8 - General view of ditch [007]

## 5 DISCUSSION

- 5.1 The features found by the excavation represent the truncated remains of possible prehistoric activity within the site given the flint artefacts recovered from the pits. The two interconnecting boundary ditches are most likely contemporary and though undated may form field boundaries of probable post medieval date.

## 6 CONCLUSION AND RECOMENDATIONS

- 6.1 The archaeological excavation has been successful in excavating and recording the significant archaeology within the development area. As such no further intrusive archaeological works will be required. However, as stated in the WSI Addendum (2016), post excavation analysis of the finds and samples taken from the excavations is recommended to better inform the interpretation of the site and aid in the creation of a publication to detail the findings.
- 6.2 This recommendation will require the approval of the West of Scotland Archaeology Service who advise South Ayrshire Council on archaeological matters.

## 7 REFERENCES

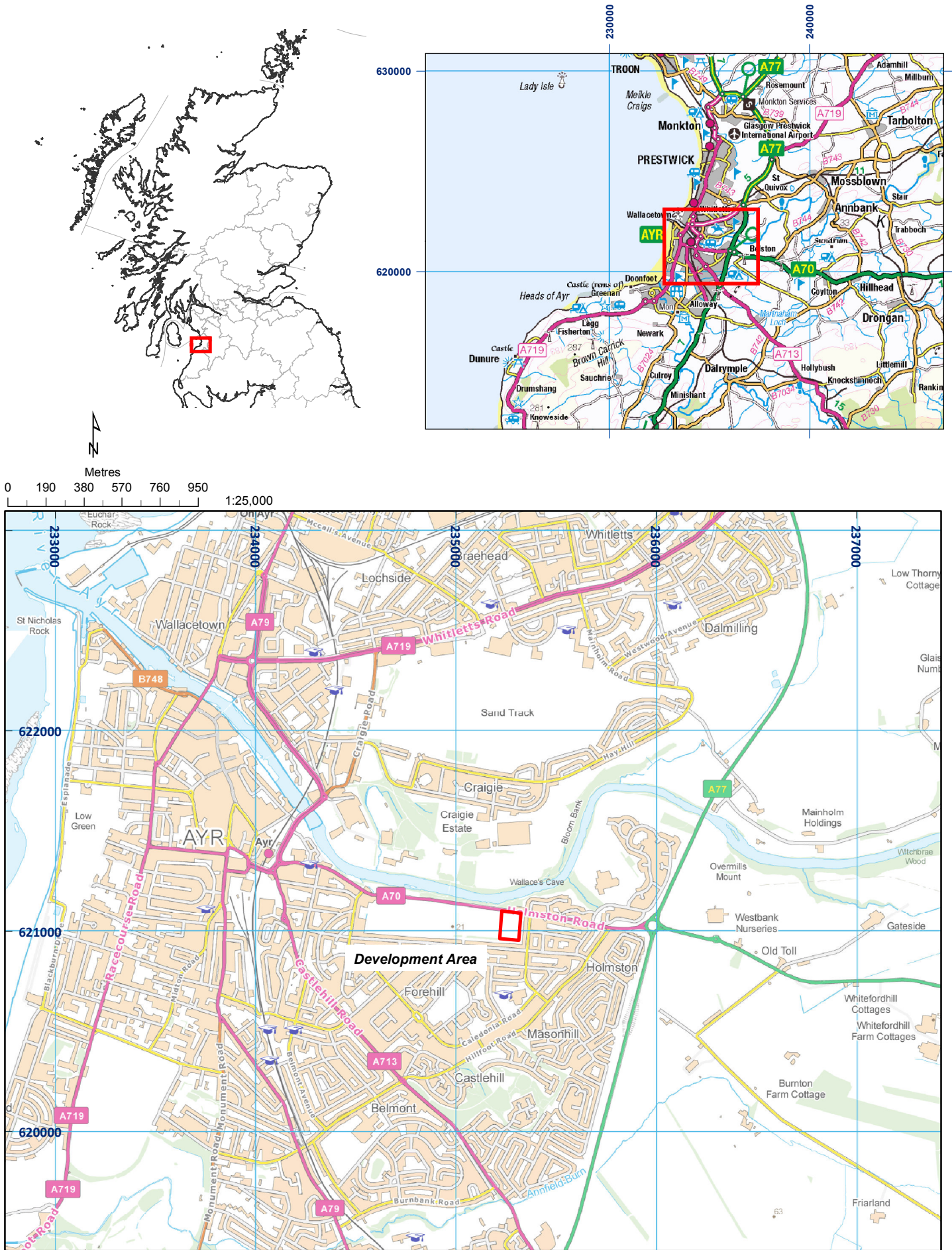
AOC 2016 *Addendum to Ayr Cemetery, Ayr, South Ayrshire: Written Scheme of Investigation*. Unpublished client report

Arabaolaza, I 2015 *Title unknown* GUARD Archaeology report

Paton, K 2016 *Ayr Cemetery, South Ayrshire: Archaeological Evaluation Data Structure Report*

Scottish Government 2014 Scottish Planning Policy.

Scottish Government 2010 PAN 2/2011 Planning & Archaeology.



01/23613/DSR/01/01

Figure 1: Site location plan



Figure 2: Trench location plan showing features

01/23613/DSR/02/01

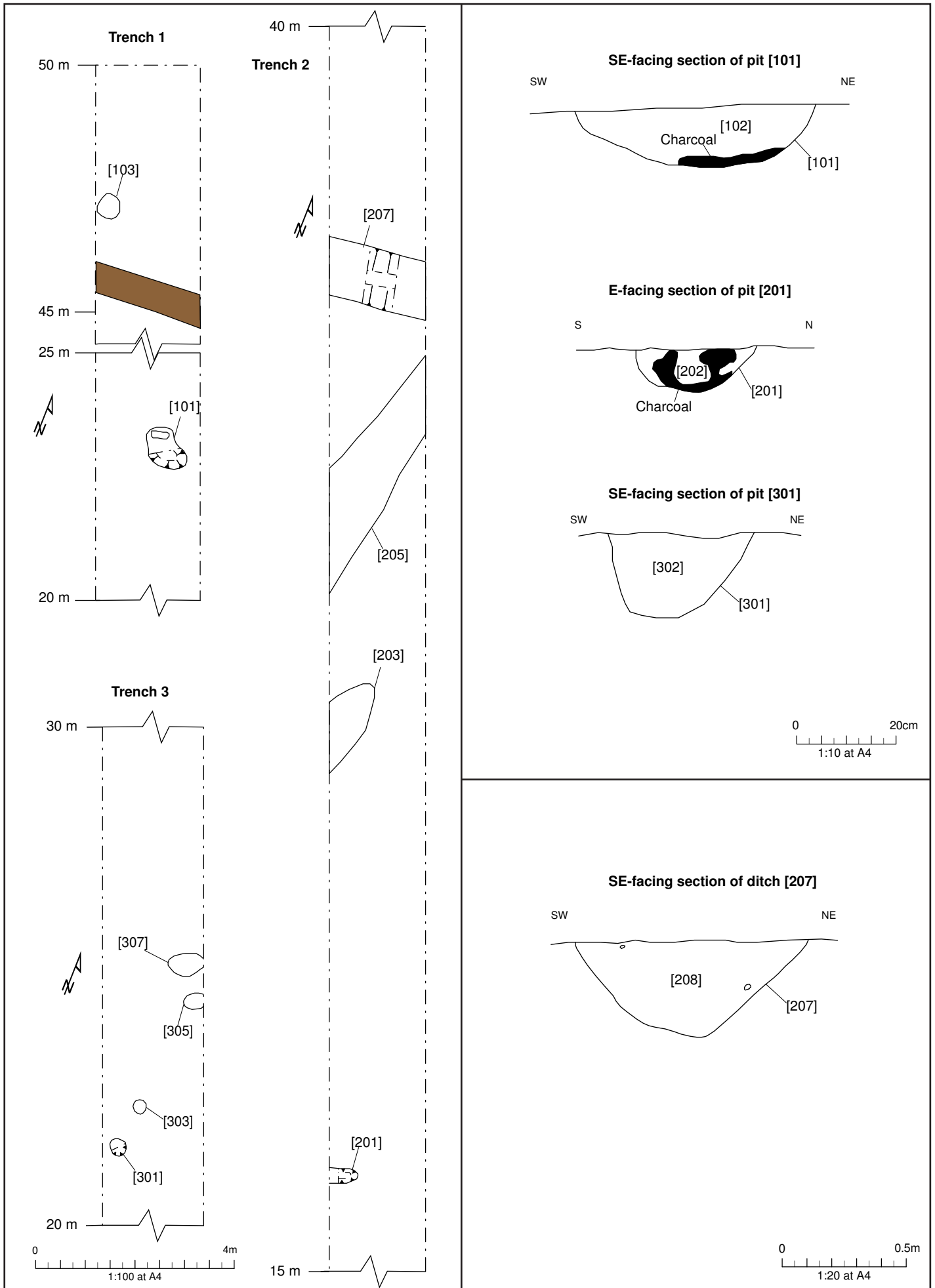


Figure 3 - Plans and sections of features

01/23613/DSR/03/01



---

**Ayr Cemetery, South Ayrshire:  
Archaeological Excavation  
Data Structure Report**

**Section 2: Appendices**

## APPENDIX 1: CONTEXT REGISTERS

Context No.	Description and Interpretation
001	Mid grey loam typically 0.4 m deep. Areas to south are covered by dark grey clay relating to dumping of excess soil by cemetery workers. There are also some areas of mid brown sandy loam up to 0.2 m deep in the southern half of the excavation area that underlies the mid grey loam. <b>Topsoil, made ground and former plough soils</b>
002	Orange sand and gravel <b>Natural subsoil</b>
003	Curvilinear cut with moderately steep sides onto a narrow concave base (V-shaped). Aligned NE-SW, continuing out of the excavation area to the SW and curving slightly to NNE then to the N where it meets with ditch [007]. Measures 38 m by 0.88 m to 1 m in width and up to 0.4 m deep. Depth varies along its length. Same as [205] in evaluation. <b>Probable prehistoric field boundary ditch</b>
004	Mottled grey and orange clayey sand to south west and silty sand to the north east. Spreads out with the cut edges in some areas. Measures 38 m by 0.88 m to 1 m in width and up to 0.4 m deep. Cut by ceramic field drain and post medieval furrow near the SW end, and most likely by ditch [007] to NE. Same as [206] in evaluation. <b>Fill of ditch [003]</b>
005	Linear cut with moderately steep sides onto a wide concave base. Aligned E-W and curves slightly to the SE and E end. Measures 60 m (+) by 0.65 m to 0.9 m wide and 0.18 m to 0.25 m deep. <b>Post-medieval field boundary</b>
006	Mid brown silty sand with frequent small stone and coal inclusions. Some white ceramic and 18 <sup>th</sup> /19 <sup>th</sup> century glass contained within it. <b>Fill of ditch [005]</b>
007	Curvilinear cut with moderately steep sides onto a narrow concave base, with some areas containing a narrow U-shaped base. Aligned approximately E-W with slight curve to SE at E end. W end may have been truncated as no terminal located – feature becomes very shallow. Most likely cuts through ditch deposit [004]. Measures 29.3 m long by 0.55 m to 1 m wide and up to 0.36 m deep. Same as [207] in evaluation. <b>Probable prehistoric field boundary ditch</b>
008	Mid greyish brown silty sand with occasional small to medium stones and charcoal flecks. Same as [208] in evaluation. <b>Fill of ditch [007]</b>
009	Sub-oval cut with moderately steep sides onto an unevenly concave base that slopes eastwards. Orientated E-W and measures 0.5 m by 0.4 m by 0.15 m. Same as [307] in evaluation. <b>Probable prehistoric pit</b>
010	Mid greyish brown silty sand with infrequent charcoal flecks and occasional stone inclusions. Extensive bioturbation (mostly from roots) to the W and S edges. Same as [308] in evaluation. <b>Fill of pit [009]</b>
011	Kidney shaped pit with steep NE side and moderate SW side onto a concave base measuring 0.85 m by 0.47 m by 0.2 m. Aligned NW to SE. Same as [101] in evaluation. <b>Prehistoric pit</b>
012	Mixture of red/orange heat affected sand with dark brown silty sand and abundant charcoal inclusions. Measures 0.85 m by 0.47 m by 0.2 m. Same as [102] in evaluation. <b>Fill of pit [011]</b>
013	Circular cut with steep but shallow sides onto a flat base. Measures 0.43 m diameter by 0.06 m. Approximately 2 m NW of pit [015]. Same as [103] in evaluation. <b>Probable prehistoric pit</b>
014	Mid to dark brown silty sand with abundant charcoal inclusions in patches throughout the deposit. Similar to fill [022]. Some small pieces of burnt bone present. Same as [104] in evaluation. <b>Fill of pit [013]</b>
015	Sub-circular cut with moderately steep sides onto a concave base. Truncated by ditch [017] along N edge. Measures 0.38 m by 0.34 m by 0.12 m. <b>Probable prehistoric pit</b>
016	Mid greyish brown sandy silt with occasional stone, charcoal flecks and burnt bone inclusions. Cut by ditch [017] along N edge. Measures 0.38 m by 0.34 m by 0.12 m. <b>Fill of pit [015]</b>
017	Linear cut with steep sides onto a wide V-shaped base. The width and depth vary along its

**Ayr Cemetery, South Ayrshire**

	length. Aligned E-W and continuing E out of excavation area. W end terminates within large modern rectangular cut but may have connected to ceramic field drain. Measures 14 m by 0.7 m by 0.04 m to 0.22 m. <b>Post medieval/modern ditch</b>
018	Dark brown silty sand and gravel. Measures 14 m by 0.7 m by 0.04 m to 0.22 m. <b>Fill of ditch [017]</b>
019	Linear cut with steep sides onto a flat base. Aligned E-W and measures 1.96 m by 0.52 m by 0.06 m. Approximately 4 m to ESE of ditch [007] terminal. May be truncated to the E as appears to become shallower rather than terminating. Terminates to the W. <b>Possible prehistoric feature</b>
020	Dark brown silty sand with frequent gravel inclusions and rare charcoal flecks. Measures 1.96 m by 0.52 m by 0.06 m. <b>Fill of feature [019]</b>
021	Small linear cut with steep sides onto a concave base (U-shaped). Aligned NE-SW and measures 0.6 m by 0.24 m by 0.08 m. Only revealed within evaluation as feature [201]. Not located within excavation area most likely due to feature being fully excavated within the evaluation trench. Initially thought it would continue further. <b>Probable prehistoric pit</b>
022	Mid to dark brown silty sand with abundant charcoal inclusions in patches throughout the deposit. Similar to fill [014]. Same as [201] in evaluation. <b>Fill of pit [021]</b>

**APPENDIX 2: PHOTOGRAPHIC REGISTERS**

Frame	Description	From	Date
1-2	W edge stripped with no archaeology	S	22/11/16
3-4	Features [301] and [303] from evaluation	E/N	22/11/16
5-6	NE facing section [003] – slot 1	NE	22/11/16
7	SW facing section [003] – slot 1	SW	22/11/16
8-10	General views slot 1 [003]	Var	22/11/16
11-12	Views of E edge and S edge stripped	Var	23/11/16
13	Cemetery works pit	N	23/11/16
14-15	Ce drain	Var	23/11/16
16-17	Cemetery works pit	Var	23/11/16
18	S facing section of [009]	S	23/11/16
19	Mid excavation shot of [009]	S	23/11/16
20	SW facing section of ditch [003] – slot 2	SW	23/11/16
21	View of slot 3 in ditch [003]	SW	23/11/16
22	SW facing section of ditch [003] – slot 3	SW	23/11/16
23-29	General views of frost on site	Var	24/11/16
30	Post excavation view of pit [009]	S	24/11/16
31	View of slot 2 in ditch [007]	S	24/11/16
32	E facing section of ditch [007] – slot 2	E	24/11/16
33	W facing section of ditch [007] – slot 2	W	24/11/16
34	E facing section of ditch [007] – slot 1	E	24/11/16
35	W facing section of ditch [007] – slot 1	W	24/11/16
36	View along ditch [007] from Slot 1 to Slot 2	W	24/11/16
37	W facing section of ditch [005]	W	24/11/16
38	View along line of ditch [005]	W	24/11/16
39-42	General view of N edge	Var	24/11/16
43-44	Pit [011] (formerly [101]) re-exposed	Var	24/11/16
45-46	Pit [011] (formerly [101]) post excavation	Var	24/11/16
47	W facing section of ditch [007] – slot 3	W	24/11/16
48	E facing section of ditch [007] – slot 3	S	24/11/16
49	General view of ditch [007] along length	W	24/11/16
50	NE facing section of ditch [003] – slot 4	NE	24/11/16
51	SW facing section of ditch [003] – slot 4	SW	24/11/16
52	SW facing section of ditch [003] – slot 5	SW	24/11/16
53	NE facing section of ditch [003] – slot 5	NE	24/11/16
54-57	General views of ditch [003]	SW	24/11/16
58	SW facing section of ditch [003] – slot 6	SW	25/11/16
59	NE facing section of ditch [003] – slot 6	NE	25/11/16
60	SW facing section of ditch [003] – slot 7	SW	25/11/16
61	NE facing section of ditch [003] – slot 7	NE	25/11/16
62-64	General views of site 25/11/16	Var	25/11/16
65	N facing section of it [013]	N	28/11/16
66	General view of pit [013]	W	28/11/16
67	S facing section of pit [015]	S	28/11/16
68	General view of pit [015]	E	28/11/16
69	W facing section of ditch [017]	W	28/11/16
70	E facing section of ditch [017]	E	28/11/16
71-73	Views along ditch [017]	E	28/11/16
74	View of rectangular cut over drain	SW	28/11/16
75	Ceramic drain joining onto W end of [017]	SW	28/11/16
76	Ceramic drain	S	28/11/16
77-78	Post excavation views of pit [013]	Var	28/11/16
79-80	Post excavation views of pit [015]	Var	28/11/16

### Ayr Cemetery, South Ayrshire

81	E facing section of ditch [007] – slot 4	E	29/11/16
82	W facing section of ditch [007] – slot 4	W	29/11/16
83	S facing section of ditch [007] – slot 5 terminus	S	29/11/16
84	E facing section of ditch [007] – slot 5 terminus	E	29/11/16
85-86	General views of ditch [007] terminus	Var	29/11/16
87	W facing section of linear pit [019]	W	29/11/16
88-89	General views of feature [019]	Var	29/11/16
90-95	General view along ditch [003]	NE	29/11/16
96	General view of ditch [003]	SE	29/11/16
97-99	General views along ditch [007]	Var	29/11/16
100	E facing section of slot between [003]-[007]	E	29/11/16
101	NNE facing section of slot 8 in [003]	NNE	29/11/16
102	W facing section of slot 6 in [007]	W	29/11/16
103-105	General views of excavation area backfilled	Var	30/11/16

**APPENDIX 3: DRAWING REGISTER**

<b>Drawing No.</b>	<b>Details</b>	<b>Scale</b>
1	S facing section of [009]	1:10
2	Mid excavation plan of [009]	1:20
3	NE facing section slot 1 [003]	1:10
4	SW facing section slot 2 [003]	1:10
5	SW facing section slot 3 [003]	1:10
6	E facing section lot 2 [007]	1:10
7	Post excavation plan of slot 2 in [007]	1:20
8	W facing section of [005]	1:10
9	Post excavation plan of slot in [005]	1:20
10	W facing section slot 1 in [007]	1:10
11	Post excavation plan of slot 1 [007]	1:20
12	Post excavation plan of [011]	1:20
13	E facing section slot 3 in [007]	1:10
14	Post excavation plan of slot 3 [007]	1:20
15	NE facing section [003] – slot 4	1:10
16	SW facing section [003] – slot 5	1:10
17	N facing section of pit [013]	1:10
18	Plan of pit [013]	1:10
19	S facing section of pit [015]	1:10
20	Plan of pit [015]	1:20
21	S facing section of pit [015]	1:10
22	Plan of pit [015]	1:20
23	W facing section of feature [019]	1:10
24	S facing section through ditch [007] terminal – slot 5	1:10
25	Plan of ditch [007] terminal	1:20
26	W facing section of dtch [007] – slot 4	1:10
27	E acing section of ditch [003] terminal and ditch [007]	1:10
28	Plan of [003] and [007] where they meet	1:20

**APPENDIX 4: FINDS REGISTER**

Finds No.	Context No.	Description
1	004	Possible quartz flake
2	010	2 lithics
3	010	Possible coarse stone tool or pot lid (??)
4	004 (Slot 5)	2 pieces of shale (working waste??) and 1 piece unworked
5	006	18 <sup>th</sup> / 19 <sup>th</sup> century glass fragments

**APPENDIX 5: SAMPLES REGISTER**

Context No.	Quantity (litres)
004 – Slot 1	10
004 – Slot 2	10
004 – Slot 4	10
004 – Slot 5	10
004 – Slot 6	10
004 – Slot 7	10
006	10
008 – Slot 3	10
008 – Slot 4	10
010	20
012	10
014	8
016	10
020	10

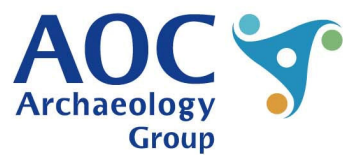
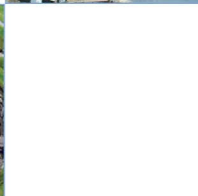
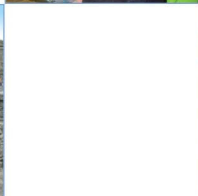
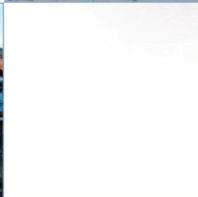
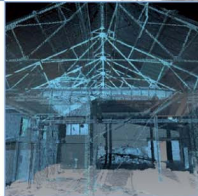
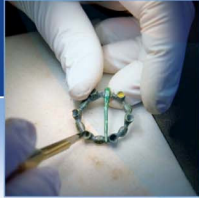
**APPENDIX 6: 'DISCOVERY AND EXCAVATION IN SCOTLAND' REPORT**

<b>LOCAL AUTHORITY:</b>	South Ayrshire Council
<b>PROJECT TITLE/SITE NAME:</b>	Ayr Cemetery
<b>PROJECT CODE:</b>	23613
<b>PARISH:</b>	Ayr
<b>NAME OF CONTRIBUTOR:</b>	Kevin Paton
<b>NAME OF ORGANISATION:</b>	AOC Archaeology Group
<b>TYPE(S) OF PROJECT:</b>	Excavation
<b>NMRS NO(S):</b>	N/A
<b>SITE/MONUMENT TYPE(S):</b>	N/A
<b>SIGNIFICANT FINDS:</b>	None
<b>NGR (2 letters, 6 figures)</b>	NS 35275 21025
<b>START DATE (this season)</b>	21 <sup>st</sup> November 2016
<b>END DATE (this season)</b>	30 <sup>th</sup> November 2016
<b>PREVIOUS WORK (inc DES)</b>	Evaluation
<b>MAIN (NARRATIVE) DESCRIPTION:</b> (May include information from other fields)	<p>An archaeological excavation was undertaken by AOC Archaeology Group on land due to be used for the extension of Ayr Cemetery, South Ayrshire.</p> <p>The excavation area was positioned around the features found from an earlier evaluation undertaken in 2015 and measured approximately 3600 m<sup>2</sup>. The excavations revealed four small rounded pits, two linear pits and two larger linear ditches that are possibly prehistoric in date. The features produced worked flint, burnt bone and some possible worked shale and quartz fragments. It is likely that these features may relate to early agricultural use, with the ditches being possible prehistoric field boundaries.</p> <p>Other features on site relate to post medieval agricultural use, with one E-W ditch representing a field boundary with ceramic tile drains and furrows on either side. Some modern activity was also noted in the form of several clay filled pits that contained modern material. These related to the dumping of excess soil from cemetery excavations into machine cut pits that were extracting sandier soils for backfilling the graves.</p> <p>It is recommended that further mitigation be conducted to meet the post excavation requirements outlined in the Written Scheme of Investigation Addendum (AOC 2016). The exact nature of this work will be detailed in a Post-Excavation Research Design (PERD) to be approved by the West of Scotland Archaeology Service (WoSAS), who advise South Ayrshire Council on archaeological matters.</p>



## Ayr Cemetery, South Ayrshire

<b>PROPOSED FUTURE WORK:</b>	No
<b>CAPTION(S) FOR ILLUSTRATIONS:</b>	N/A
<b>SPONSOR OR FUNDING BODY:</b>	South Ayrshire Council
<b>ADDRESS OF MAIN CONTRIBUTOR:</b>	AOC Archaeology Group Edgefield Road Industrial Estate Loanhead, Midlothian, EH20 9SY
<b>EMAIL ADDRESS:</b>	admin@aocarchaeology.com
<b>ARCHIVE LOCATION</b>	Archive to be deposited in NMRS



**AOC Archaeology Group**, Edgefield Industrial Estate, Edgefield Road, Loanhead EH20 9SY  
tel: 0131 440 3593 | fax: 0131 440 3422 | e-mail: [edinburgh@aocarchaeology.com](mailto:edinburgh@aocarchaeology.com)

[www.aocarchaeology.com](http://www.aocarchaeology.com)