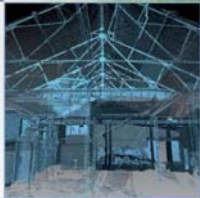
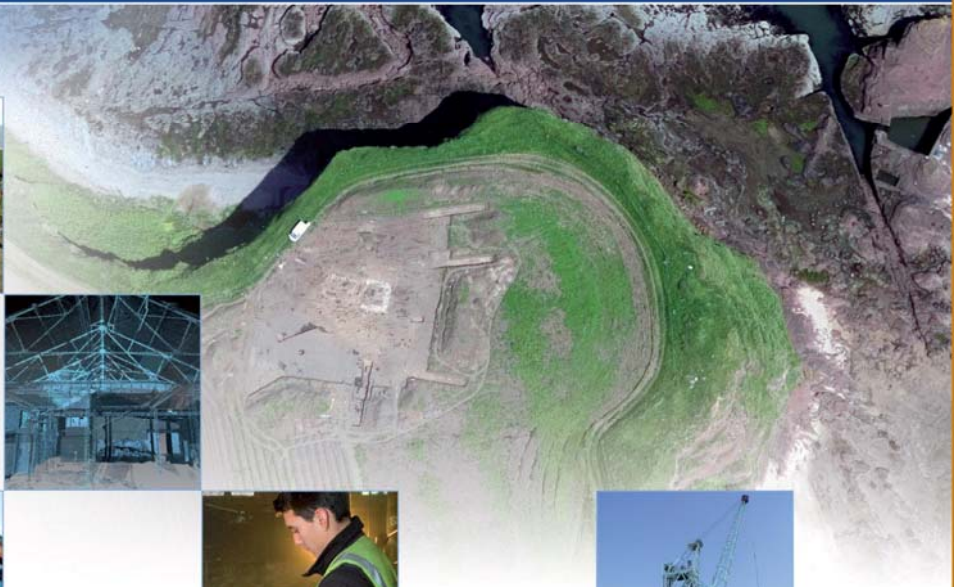


# Stanistone Road, Carlisle, South Lanarkshire: Archaeological Evaluation Data Structure Report

AOC 23609  
23<sup>rd</sup> January 2017



---

## Stanistone Road, Carluke, South Lanarkshire: Archaeological Evaluation Data Structure Report

---

**On Behalf of: Springfield Properties**  
Larbert Office,  
Springfield House,  
3 Central Park Avenue,  
Larbert  
FK5 4RX

**Planning Reference: CL/16/0251**

**National Grid Reference (NGR): NS 85311 50575**

**AOC Project No: 23609**

**OASIS No.: aocarcha1-274149**

**Prepared by: Kevin Paton**

**Date of Fieldwork: 17<sup>th</sup> January 2017**

**Date of Report: 23<sup>rd</sup> January 2017**

This document has been prepared in accordance with AOC standard operating procedures.

**Author: Kevin Paton**

**Date: 23<sup>rd</sup> January 2017**

**Approved by: Martin Cook**

**Date:**

**Draft/Final Report Stage: Draft**

**Date:**

**Enquiries to:** AOC Archaeology Group  
Edgefield Industrial Estate  
Edgefield Road  
Loanhead  
EH20 9SY

Tel. 0131 440 3593  
Fax. 0131 440 3422  
e-mail. [edinburgh@aocarchaeology.com](mailto:edinburgh@aocarchaeology.com)



## Contents

	<b>Page</b>
List of Illustrations .....	2
List of Plates .....	2
List of Appendices .....	2
<b>ABSTRACT .....</b>	<b>3</b>
<b>1 INTRODUCTION .....</b>	<b>4</b>
1.1 Background .....	4
1.2 Site Location .....	4
1.3 Historical Background .....	4
<b>2 OBJECTIVES .....</b>	<b>5</b>
<b>3 METHODOLOGY .....</b>	<b>5</b>
<b>4 RESULTS .....</b>	<b>5</b>
<b>5 CONCLUSION AND RECOMENDATIONS .....</b>	<b>7</b>
<b>6 REFERENCES .....</b>	<b>7</b>
6.1 Bibliographic References .....	7
6.2 Cartographic References .....	7
<b>APPENDIX 1: EVALUATION TRENCH DESCRIPTIONS .....</b>	<b>9</b>
<b>APPENDIX 2: PHOTOGRAPHIC REGISTERS .....</b>	<b>11</b>
<b>APPENDIX 3: 'DISCOVERY AND EXCAVATION IN SCOTLAND' REPORT .....</b>	<b>12</b>

## List of Illustrations

Figure 1: Site Location

Figure 2: Extract from 1<sup>st</sup> Edition Ordnance Survey, 1859

Figure 3: Evaluation trench location plan

## List of Plates

Plate 1: General view of Trench 2 - E-facing section

Plate 2: General view of Trench 4

Plate 3: General view of Trench 8 - S-facing section

## List of Appendices

Appendix 1: Evaluation Trench Descriptions

Appendix 2: Photographic Register

Appendix 3: Discovery and Excavation in Scotland Report

## ABSTRACT

---

An archaeological evaluation was undertaken by AOC Archaeology Group prior to a residential development on land off Stanistone Road, Carluke, South Lanarkshire.

The evaluation revealed major disturbance and banded construction spoil along the western edge of the site related to the recent school construction. The remainder of the site revealed disturbance from other modern dumping activity and levelling of the site along Stanistone Road. No archaeological features or artefacts were revealed throughout the area.

It is recommended that no further archaeological work be conducted.

## 1 INTRODUCTION

### 1.1 Background

1.1.1 An archaeological evaluation was required by Springfield Properties prior to a residential development on land due off Stanistone Road, Carluke, South Lanarkshire. The scope of the works was determined by South Lanarkshire Council as advised on archaeological matters by the West of Scotland Archaeology Service (WoSAS). The works were conducted according to the terms of a *Written Scheme of Investigation* (AOC 2016), approved on behalf of South Lanarkshire Council by WoSAS and in accordance with *Scottish Planning Policy* (Scottish Government 2014) and *PAN 2/2011 Planning And Archaeology* (Scottish Government 2011).

### 1.2 Site Location

1.2.1 The development area is located to the east of Carluke town centre, and comprises an area of derelict land to the immediate east of Stanistone Road (NGR: NS 85311 50575; Figure 1). The site is bounded by Carluke High School playing fields to the east, residential properties on Carnwath Road to the south and Rosemount Court to the north.

### 1.3 Historical Background

1.3.1 The mid 19<sup>th</sup> century 1<sup>st</sup> Edition Ordnance Survey map shows the development area to include the gardens and access road to a large detached property called 'Rosemount'. This property is shown to have boundary walls to the east and south and the structure would lie wholly within the development area. This property is at least mid 19<sup>th</sup> century in date and the third edition Ordnance Survey map of the early 20<sup>th</sup> century shows the property to still be extant. Along with the property to the east there is the 'Standingstone Well' also shown on the 1<sup>st</sup> Edition map (Figure 2).

1.3.2 Neither 'Rosemount' house or the well are listed as known sites by the Historic Environment Records or the HES national database. No other sites are listed within the development area either with nearby sites all relating to 20<sup>th</sup> century activity such as Carluke Secondary School (NMRS No. NS85SE 9, WoSAS PIN 12611) or Cairneymount Housing Scheme (NMRS No NS85SE 90, WoSAS PIN 10316).

1.3.3 Further to the east there is a find spot of cist with bipartite food vessel and cremation deposit found in 1811 at Cairney Mount (NMRS No. NS85SE 6, WoSAS PIN 10318). The 1845 New Statistical Account notes that more than one cist was found at Cairney Mount with supposedly numerous cists with cremations and urns.



Figure 2: Extract from 1<sup>st</sup> Edition Ordnance Survey, 1859

## 2 OBJECTIVES

2.1 The objectives of the archaeological evaluation were:

- i) to determine and assess the character, extent, condition, quality, date and significance of any buried archaeological remains within the proposed development area through evaluation trenching;
- ii) to advise and implement an appropriate form of mitigation, such as excavation, post-excavation analyses and publication, given the infeasibility of preserving the archaeological material *in situ*, should significant archaeological remains be encountered.

## 3 METHODOLOGY

3.1 The 8% evaluation of the 0.95 hectare development area originally required the excavation of 380 linear metres of trench. However, due to the presence of a natural steep ridge through the site, numerous mature trees, Japanese Knotweed, a former modern building in the NE corner and an electrical cable along the western edge, the available evaluation area was reduced. In total the evaluation consisted of 10 trenches of varying length and alignment, equating to 175 linear metres of trench (Figure 3). The work was conducted utilising an 8 tonne tracked excavator equipped with a bladed ditching bucket, and operating under the constant supervision of an experienced field archaeologist. Each trench was recorded using AOC *pro forma* trench record sheets and any potential features investigated further to assess their character and date.

## 4 RESULTS

4.1 All archaeological works were conducted on the 17<sup>th</sup> January 2017. Weather conditions were fair throughout the course of the work conducted meaning that archaeological visibility was good. The various data gathered from the evaluation are presented as a series of appendices:

Appendix 1: Evaluation trench descriptions

Appendix 2: Photographic Register;

Appendix 3: '*Discovery and Excavation in Scotland*' entry

4.2 The topsoil throughout the development area had been disturbed and contained a lot of modern rubble and rubbish. In trenches 1 & 2, the vegetation layer had previously been removed, revealing type 1 stone and other made ground consisting of demolition material, re-deposited clay and red blaes up to 0.8 m thick. In trench 1 this made ground overlay the natural grey clay. In trench 2 this made ground partly overlay a dark brown peat deposit measuring 0.5 m thick (Plate 1) that most likely relates to the steep ridge line on site that may have been a former small stream valley.

4.3 Trenches 3-6 and 9-10 consisted of a mixture of soil and made ground measuring between 0.2 and 1.1 m thick, overlying the various subsoils present on the sloping ground and flatter areas of site (Plate 2). However, trenches 7 & 8 along the eastern edge of site contained recently deposited construction waste such as type 1 stone and crushed material. The southern half of this edge was formed by a bund of material placed on the slope, with over 2.5 m of clay and rubble from the high school development having been dumped there. The northern half of the area contained very compact stone deposits overlying red blaes deposits onto the natural subsoil (Plate 3) that suggests

it was used for a construction site compound, most likely related to the new school to the immediate east.



Plate 1: General view of Trench 2 - E-facing section



Plate 2: General view of Trench 4





Plate 3: General view of Trench 8 - S-facing section

## 5 CONCLUSION AND RECOMENDATIONS

- 5.1 The archaeological evaluation revealed that there is no significant archaeology within the development area. As such, it is recommended that no further archaeological works are required. This recommendation will require the approval of the West of Scotland Archaeology Service who advise South Lanarkshire Council on archaeological matters.

## 6 REFERENCES

### 6.1 Bibliographic References

AOC 2016 *Stanistone Road, Carluke, South Lanarkshire: Archaeological Evaluation Written Scheme of Investigation*. Unpublished client report

Scottish Government 2014 Scottish Planning Policy.

Scottish Government 2010 PAN 2/2011 Planning & Archaeology.

### 6.2 Cartographic References

1859 Ordnance Survey *Lanark Sheet XIX.14 (Carluke)*

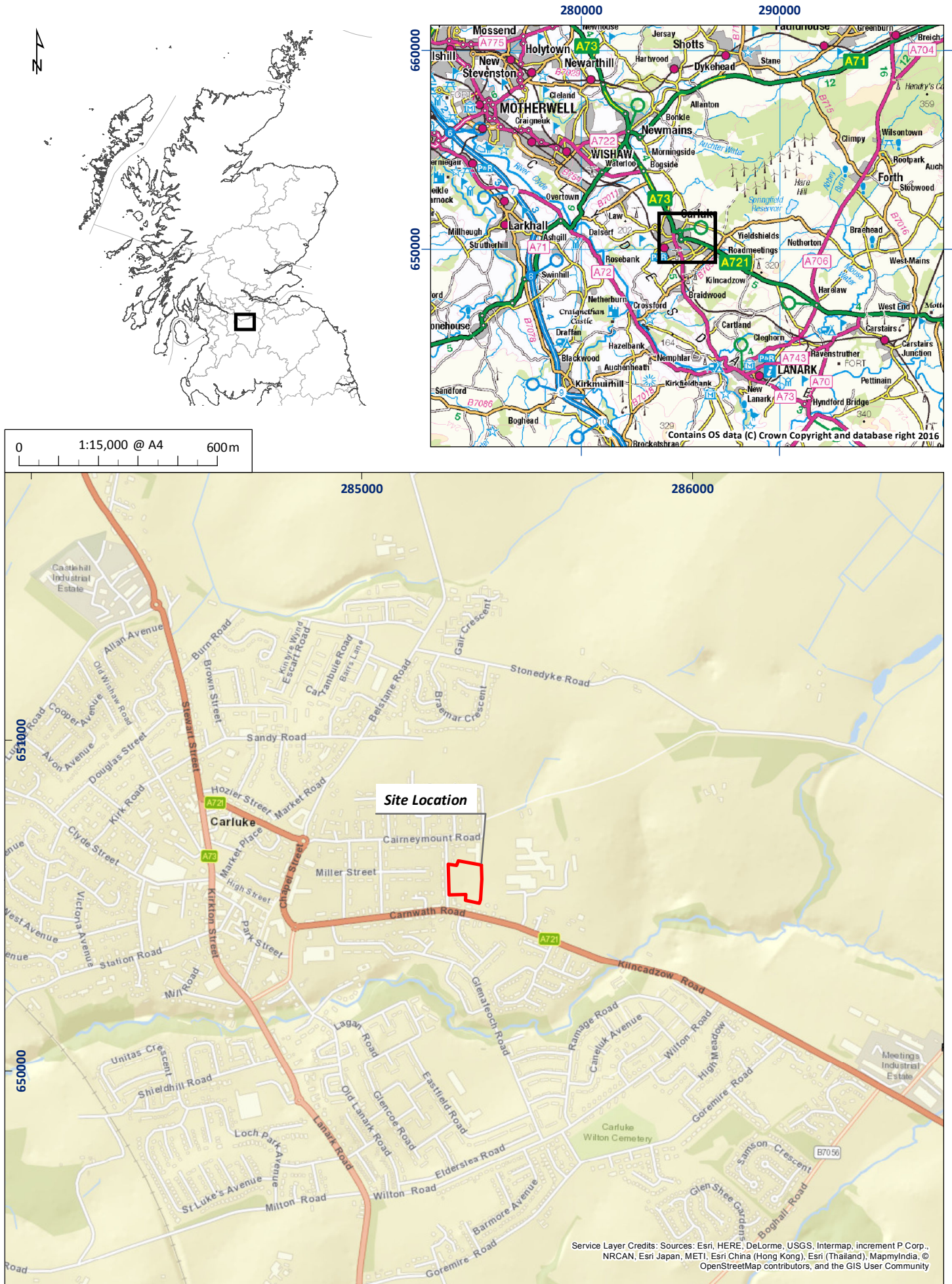


Figure 1: Site location

---

**Stanistone Road, Carluke,  
South Lanarkshire:  
Archaeological Evaluation  
Data Structure Report**

**Section 2: Appendices**

## APPENDIX 1: EVALUATION TRENCH DESCRIPTIONS

### Trench 1

<i>Dimensions</i>	15 m by 1.8 m
<i>Excavated Area</i>	27 m <sup>2</sup>
<i>Excavated Orientation</i>	S to N
<i>Soil make-up</i>	Made ground – Type 1 stone and terram (0.2 m) over dark grey clay and rubble (0.2 m) over red blaes (0.1 m) over brick, stone and concrete within a dark grey clay (0.4 m) – 0.9 m
<i>Natural Subsoil</i>	Pale grey clayey sand
<i>Significant Features</i>	None
<i>Other Features</i>	Ceramic drainpipe at 3.7 m aligned E-W
<i>Finds</i>	None

### Trench 2

<i>Dimensions</i>	15 m by 1.8 m
<i>Excavated Area</i>	27 m <sup>2</sup>
<i>Excavated Orientation</i>	S to N
<i>Soil make-up</i>	Made ground – Type 1 stone and terram (0.2 m) over dark grey clay and rubble (0.2 m) over red blaes (0.1 m) over brick, stone and concrete within a dark grey clay (0.4 m) – 0.65 m Peat/topsoil – dark brown peaty topsoil (from 6 m to end of trench) – 0.2 m
<i>Natural Subsoil</i>	Pale grey clayey sand
<i>Significant Features</i>	None
<i>Other Features</i>	None
<i>Finds</i>	None

### Trench 3

<i>Dimensions</i>	30 m by 1.8 m
<i>Excavated Area</i>	54 m <sup>2</sup>
<i>Excavated Orientation</i>	NE to SW
<i>Soil make-up</i>	Disturbed topsoil – Mid grey clay and stone until 8 m then dark grey clay loam – 0.4 m
<i>Natural Subsoil</i>	Mid brown stony clay until 10 m then mid orangey brown clayey sand until 22 m then grey and yellow sandy clay
<i>Significant Features</i>	None
<i>Other Features</i>	None
<i>Finds</i>	None

### Trench 4

<i>Dimensions</i>	20 m by 1.8 m
<i>Excavated Area</i>	36 m <sup>2</sup>
<i>Excavated Orientation</i>	NE to SW
<i>Soil make-up</i>	Disturbed topsoil – Mid grey clay loam – 0.53 m
<i>Natural Subsoil</i>	Mid brown stony clay until 2.6 m then mid orangey brown clayey sand until 8.7 m then grey and yellow sandy clay
<i>Significant Features</i>	None
<i>Other Features</i>	Modern pit at 10.5 m to 11.6 m (NW edge)
<i>Finds</i>	None

### Trench 5

<i>Dimensions</i>	25 m by 1.8 m
<i>Excavated Area</i>	45 m <sup>2</sup>
<i>Excavated Orientation</i>	N to S
<i>Soil make-up</i>	Made ground – Mid grey clay and stone with occasional brick until 8 m then thin layer of clay and modern rubbish – 0.5 m Former topsoil – Dark brown clayey silt – 0.55 m
<i>Natural Subsoil</i>	Mid orangey brown clayey sand until 12.4 m then grey and yellow sandy clay
<i>Significant Features</i>	None
<i>Other Features</i>	Modern pit at 22 m with concrete, brick and corrugated sheeting
<i>Finds</i>	None

#### Trench 6

<i>Dimensions</i>	20 m by 1.8 m
<i>Excavated Area</i>	36 m <sup>2</sup>
<i>Excavated Orientation</i>	NE to SW
<i>Soil make-up</i>	Made ground – Yellowish brown clay and stone – 0.3 m Dark grey clay loam – 0.5 m
<i>Natural Subsoil</i>	Pale grey and yellow sandy clay
<i>Significant Features</i>	None
<i>Other Features</i>	Modern plastic pipe @ 3.2 m aligned E-W; Modern grey pipe @ 5.3 m aligned E-W; Rubble drain at 8.3 m aligned E-W
<i>Finds</i>	None

#### Trench 7

<i>Dimensions</i>	5 m by 1.8 m
<i>Excavated Area</i>	9 m <sup>2</sup>
<i>Excavated Orientation</i>	S to N
<i>Soil make-up</i>	Made ground – Crushed stone and type q over geogrid – 0.5 m Re-deposited clay and soil – Pale brown clay and stone with patches of yellow clay – 2 m (+)
<i>Natural Subsoil</i>	Not reached
<i>Significant Features</i>	None
<i>Other Features</i>	None
<i>Finds</i>	None

#### Trench 8

<i>Dimensions</i>	5 m by 1.8 m
<i>Excavated Area</i>	9 m <sup>2</sup>
<i>Excavated Orientation</i>	E to W
<i>Soil make-up</i>	Made ground – Very compact rubble and clay over red blaes – 0.7 m
<i>Natural Subsoil</i>	Mid brown stony clay
<i>Significant Features</i>	None
<i>Other Features</i>	None
<i>Finds</i>	None

#### Trench 9

<i>Dimensions</i>	20 m by 1.8 m
<i>Excavated Area</i>	36 m <sup>2</sup>
<i>Excavated Orientation</i>	NNE to SSW
<i>Soil make-up</i>	Disturbed topsoil – Dark grey clay loam – 0.4 m
<i>Natural Subsoil</i>	Mid brown stony clay
<i>Significant Features</i>	None
<i>Other Features</i>	None
<i>Finds</i>	None

#### Trench 10

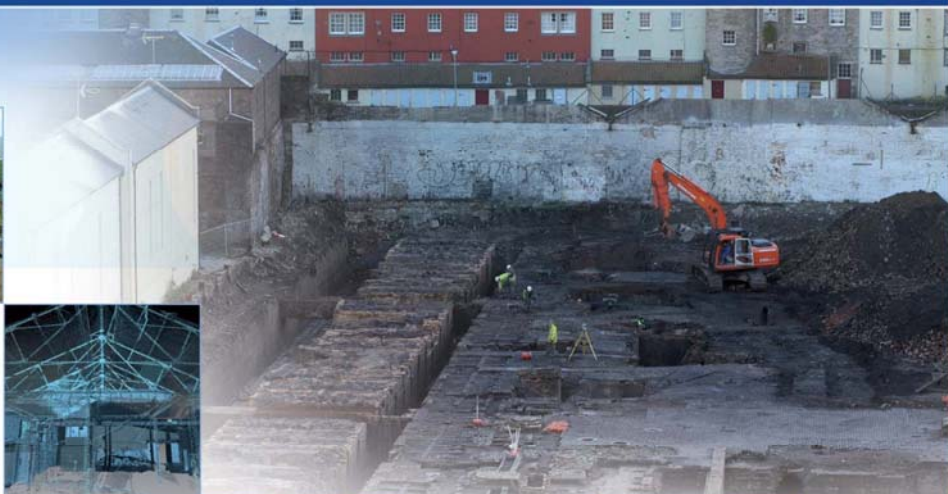
<i>Dimensions</i>	10 m by 1.8 m
<i>Excavated Area</i>	18 m <sup>2</sup>
<i>Excavated Orientation</i>	W to E
<i>Soil make-up</i>	Made ground – Mid grey clay and rubble – 1.1 m
<i>Natural Subsoil</i>	Grey and yellow sandy clay
<i>Significant Features</i>	None
<i>Other Features</i>	None
<i>Finds</i>	None

**APPENDIX 2: PHOTOGRAPHIC REGISTERS**

Frame	Description	From	Date
1-21	General views of site from various locations showing disturbance	Var	17/1/17
22	Post-ex of T1	N	17/1/17
23	View of T1 from T2	N	17/1/17
24	W-facing section of T2	W	17/1/17
25	Post-ex of T2	N	17/1/17
26-27	Views of trees etc to N of T3	Var	17/1/17
28	Post-ex of T3	SW	17/1/17
29	Modern pit in T4	NE	17/1/17
30	Post-ex of T4	SW	17/1/17
31	Modern pit in T5	S	17/1/17
32	Post-ex of T5	S	17/1/17
33	Post-ex of T6	SW	17/1/17
34	Modern hardcore in T7	S	17/1/17
35-37	Post-ex views of T7	Var	17/1/17
38	Mature trees	E	17/1/17
39	Area of former site hut in NE corner	S	17/1/17
40-41	Views of landscaping in NE corner	Var	17/1/17
42-43	Post-ex of T8	S/E	17/1/17
44	N edge stripped for knot weed	S	17/1/17
45-46	Small valley area to W of T9	SE	17/1/17
47	Post-ex of T9	S	17/1/17
48	Post-ex of T10	E	17/1/17
49-53	Views of site - post-ex	Var	17/1/17

**APPENDIX 3: 'DISCOVERY AND EXCAVATION IN SCOTLAND' REPORT**

<b>LOCAL AUTHORITY:</b>	South Lanarkshire Council
<b>PROJECT TITLE/SITE NAME:</b>	Stanistone Road
<b>PROJECT CODE:</b>	23609
<b>PARISH:</b>	Carluke
<b>NAME OF CONTRIBUTOR:</b>	Kevin Paton
<b>NAME OF ORGANISATION:</b>	AOC Archaeology Group
<b>TYPE(S) OF PROJECT:</b>	Evaluation
<b>NMRS NO(S):</b>	N/A
<b>SITE/MONUMENT TYPE(S):</b>	N/A
<b>SIGNIFICANT FINDS:</b>	None
<b>NGR (2 letters, 6 figures)</b>	NS 85311 50575
<b>START DATE (this season)</b>	17 <sup>th</sup> January 2017
<b>END DATE (this season)</b>	17 <sup>th</sup> January 2017
<b>PREVIOUS WORK (inc DES)</b>	None
<b>MAIN (NARRATIVE) DESCRIPTION:</b> (May include information from other fields)	<p>An archaeological evaluation was undertaken by AOC Archaeology Group prior to a residential development on land off Stanistone Road, Carluke, South Lanarkshire.</p> <p>The evaluation revealed major disturbance and banded construction spoil along the western edge of the site related to the recent school construction. The remainder of the site revealed disturbance from other modern dumping activity and levelling of the site along Stanistone Road. No archaeological features or artefacts were revealed throughout the area.</p>
<b>PROPOSED FUTURE WORK:</b>	No
<b>CAPTION(S) FOR ILLUSTRATIONS:</b>	N/A
<b>SPONSOR OR FUNDING BODY:</b>	Springfield Properties Ltd
<b>ADDRESS OF MAIN CONTRIBUTOR:</b>	AOC Archaeology Group Edgefield Road Industrial Estate Loanhead, Midlothian, EH20 9SY
<b>EMAIL ADDRESS:</b>	admin@aocarchaeology.com
<b>ARCHIVE LOCATION</b>	Archive to be deposited in NMRS



**AOC Archaeology Group**, Edgefield Industrial Estate, Edgefield Road, Loanhead EH20 9SY  
tel: 0131 440 3593 | fax: 0131 440 3422 | e-mail: [edinburgh@aocarchaeology.com](mailto:edinburgh@aocarchaeology.com)

[www.aocarchaeology.com](http://www.aocarchaeology.com)