

# Ravelrig Road, Balerno, Edinburgh: Archaeological Excavation Data Structure Report

AOC 23521  
January 2017



**AOC**  
Archaeology  
Group

ARCHAEOLOGY | HERITAGE | CONSERVATION

# Ravelrig Road, Balerno, Edinburgh: Archaeological Excavation Data Structure Report

---

**On Behalf of:** **Cala Homes (East) Ltd.**  
Cairnlee House,  
Callendar Business Park,  
Callendar Road,  
Falkirk,  
FK1 1XE

**National Grid Reference (NGR):** centred on **NT 15668 67031**

**AOC Project No:** **23521**

**OASIS No:** **1-274417**

**Prepared by:** **Genevieve Shaw**

**Date of Fieldwork:** **29<sup>th</sup> November to 16<sup>th</sup> December 2016**

**Date of Report:** **January 2017**

**This document has been prepared in accordance with AOC standard operating procedures.**

**Author:** **Genevieve Shaw**

**Date:** **January 2017**

**Approved by:**

**Date:** **January 2017**

**Draft/Final Report Stage:** **Final**

**Date:** **January 2017**

**Enquiries to:** AOC Archaeology Group  
Edgefield Industrial Estate  
Edgefield Road  
Loanhead  
EH20 9SY

Tel. 0131 440 3593  
Fax. 0131 440 3422  
e-mail. [edinburgh@aocarchaeology.com](mailto:edinburgh@aocarchaeology.com)



## Contents

	<b>Page</b>
List of Illustrations .....	2
List of Plates .....	2
List of Appendices .....	2
<b>ABSTRACT .....</b>	<b>3</b>
<b>1 INTRODUCTION .....</b>	<b>4</b>
1.1 Background .....	4
1.2 Site Location .....	4
1.3 Historical Background .....	4
1.4 Previous Archaeological work .....	5
<b>2 OBJECTIVES .....</b>	<b>5</b>
<b>3 METHODOLOGY .....</b>	<b>6</b>
<b>4 RESULTS .....</b>	<b>6</b>
<b>5 DISCUSSION .....</b>	<b>11</b>
<b>6 CONCLUSION AND RECOMENDATIONS .....</b>	<b>12</b>
<b>7 REFERENCES .....</b>	<b>13</b>
<b>APPENDIX 2: CONTEXT REGISTER .....</b>	<b>15</b>
<b>APPENDIX 2: PHOTOGRAPHIC REGISTER .....</b>	<b>17</b>
<b>APPENDIX 3: DRAWING REGISTER .....</b>	<b>22</b>
<b>APPENDIX 4: SMALL FINDS REGISTER .....</b>	<b>22</b>
<b>APPENDIX 5: SAMPLE REGISTER .....</b>	<b>23</b>
<b>APPENDIX 6: 'DISCOVERY AND EXCAVATION IN SCOTLAND' REPORT .....</b>	<b>24</b>

## List of Illustrations

Figure 1: Site Location

Figure 2: Area location Plan

Figure 3: Plan of Area 1

Figure 4: Plan Area 2

Figure 5: Plan Area 3

Figure 6: Plan Area 4

Figure 7: Plan Area 5

## List of Plates

Plate 1: Area 1 North facing section [1032]

Plate 2: Area 1 Well post clean from NW [1035]

Plate 3: Area 1 Well post clean from SE [1035]

Plate 4: Area 3 E facing shot of Pit [1002]

Plate 5: Area 5 SW facing section Pit [1032]

Plate 6: Area 5 NW facing section Pit [1026]

Plate 7: Area 5 NW facing section Pit [1011]

## List of Appendices

Appendix 1: Context Register

Appendix 2: Photographic Register

Appendix 3: Drawing Register

Appendix 4: Finds Register

Appendix 5: Sample Register

Appendix 6: Discovery and Excavation in Scotland Report

## ABSTRACT

---

A programme of archaeological works consisting of a monitored topsoil strip and excavation was undertaken by AOC Archaeology Group on land at Ravelrig Road, Balerno, Edinburgh (NT 15668 67031) .

An initial evaluation was undertaken in August 2016. This revealed a series of archaeological remains including pits, a ditch feature and a concentrated spread of decorated Neolithic ceramics.

Subsequent mitigation consisted of the topsoil stripping and excavation of five areas centered on the known archaeology recorded during the evaluation.

The excavation revealed thirteen pit features, two of which are possible clay lined ovens. It is probable that these features are an extension of the prehistoric material recorded during the evaluation undertaken in July 2016.

No small finds were retrieved during the excavation.

A small brick built well was also recorded. The well was late 19<sup>th</sup> century in date.

## 1 INTRODUCTION

### 1.1 Background

- 1.1.1 An archaeological excavation was required by Cala Homes (East) Ltd. on land at Ravelrig Road, Balerno, Edinburgh following an archaeological evaluation which identified archaeological remains *in situ* (AOC 2016a). The development will comprise of new housing on an area of arable land on the north-eastern edge of Balerno. The scope of the works was determined by the City of Edinburgh Council, who is advised on archaeological matters by the City of Edinburgh Council Archaeology Service (CECAS).
- 1.1.2 The works were conducted according to the terms of a *Written Scheme of Investigation* (AOC 2016b), approved on behalf of the City of Edinburgh Council by CECAS and in accordance with *Scottish Planning Policy* (Scottish Government 2014) and *PAN 2/2011 Planning And Archaeology* (Scottish Government 2011).
- 1.1.3 The excavation revealed thirteen pit features, two of which are possible clay lined ovens. It is probable that these features are an extension of the prehistoric material recorded during the evaluation undertaken in July 2016.
- 1.1.4 A small brick built well was also recorded. The well was late 19<sup>th</sup> century in date

### 1.2 Site Location

- 1.2.1 The proposed development area is located on the northeastern edge of Balerno, City of Edinburgh (**Figure 1**). The site is ca 13.8 ha in size and is bounded by Ravelrig Road to the west, residential properties to the south, a dismantled tramway to the east and a track and further agricultural fields to the north. The site is centred on NGR NT 15668 67031 and is currently open fields under recent arable cultivation.
- 1.2.2 The proposed development site lies on superficial deposits of Devensian till which sits on Ballagan Formation sandstone (BGS, 2016). Brown to orange sandy clay with orange sandstone rock fragments was noted as the natural during the evaluation.

### 1.3 Historical Background

- 1.3.1 To the southeast of the proposed development area is the General's Watch on Ravelrig Hill (NRHE NT16NE 13), which was recorded in the Old Statistical Account as a Roman Station or Post. When Ordnance Survey visited the site in 1965 noted that there were no traces of earthworks at the site, which had been partially quarried away. 550 Lanark Road West (LB27076), along with its gatepiers and gardener's cottage to the south of the development, is Category B Listed. They are Scottish Arts and Crafts in style and date to 1910 by Walter

Crum Watson. Pilmure House (NRHE NT16NE 121) to the southeast of the site on the corner of Ravelrig Road and Lanark Road West was present on the First Edition Ordnance Survey map. It was subject to building recording in 2000 as part of planning condition associated with residential development.

#### **1.4 Previous Archaeological work**

- 1.4.1 An archaeological evaluation and metal detecting survey were undertaken by AOC Archaeology in July 2016 which consisted of a 10% trial trench evaluation over the proposed development site. 78 trenches were evaluated totalling 7095m with all excavated material metal detected for finds of an archaeological nature.
- 1.4.2 The evaluation identified a number archaeological remains mostly clustered at the western side of the site, these included three pits and a possible ditch. The most notable of these features was a small oval pit which produced a concentrated spread of decorated Neolithic pottery. An additional large isolated pit and a brick-lined well with signs of possible earlier construction was also located at the eastern end of the site.
- 1.4.3 The topsoil was rich in 19th and 20th century ceramics with two finds of Scottish post medieval reduced ware. Two 19th century ceramic figurines were also recovered. Below the topsoil was a varying depth of plough soil over natural mixed glacial sand, clay gravel, and erratic boulders. The field was frequently cut by land improvement drains and a brick well was uncovered at the eastern side of site under a cap of flat stone slabs. This well displayed signs of re-development and may date to an early phase of land improvement.

## **2 OBJECTIVES**

- 2.1 The objectives of the archaeological excavation were:
- i) The identification, excavation, sampling and recording of all significant archaeological features within the proposed development;
  - ii) The retrieval of a representative artifact assemblage;
  - iii) Upon conclusion of the excavation, the preparation and undertaking of a post-excavation and publication programme bringing the findings into the public and academic domain.

### 3 METHODOLOGY

3.1 Due to the discovery of significant archaeology during the evaluation, five excavation areas were opened (Fig 2). Areas 3, 4 & 5 measured approximately 50 m by 50 m and were situated in the western half of the development. Areas 1 & 2 were grouped closely together to the south-east and measured 25 m by 25 m respectively. Each excavation area was stripped of overburden by a 24 tonne excavator utilising a bladed ditching bucket and/or a narrow bucket where required. All machine excavation was conducted under the constant supervision of an experienced field archaeologist. All features and structures revealed were then cleaned by hand before being recorded by digital photography, drawn and surveyed in detail and then a written record produced using AOC *pro forma* context sheets.

### 4 RESULTS

#### 4.1 Introduction

4.1.1 The archaeological evaluation was conducted on the 29<sup>th</sup> November to the 16<sup>th</sup> December 2016, Weather conditions were generally fair throughout the course of the work and overall archaeological visibility was good.

4.1.2 The various data gathered from the evaluation and excavations are presented as a series of appendices:

Appendix 1: Evaluation trench descriptions

Appendix 2: Context Register;

Appendix 3: Photographic Register;

Appendix 4: Drawing Register

Appendix 5: Finds Register

Appendix 6: '*Discovery and Excavation in Scotland*' entry





Plate 1 Area 1 North facing section [1032]

#### **4.2 Area 1 (20 m x 20 m) Fig 3**

- 4.2.1 The stripping of Area 1 revealed a single large oval feature [1023] with steeply sloping sides and a narrow concave base. The feature measured 2.85 m by 2.21 m, with a maximum depth of 0.83 m. The feature was filled by a tertiary deposit of mid grey silty sand (1033) and a primary deposit of re-deposited light brown sandy loam. Both of these deposits contained inclusions of medium to large angular stones. Several pieces of modern glass and modern ceramics were recovered from the fill.
- 4.2.2 Given its size and shape the feature [1023] most probably represents the remains of a former tree throw. Several decayed trees roots were present within the fill.



Plate 2 Area 1 Well post clean from NW [1035]



Plate 3 Area 1 Well post clean from SE [1035]

### 4.3 Area 2 (20 m x 20 m) Fig 4

- 4.3.1 A single large sub-circular structure [1037] was recorded within Area 2. This had been initially exposed during the evaluation. The feature was composed of red, frogged bricks five courses in height and bonded with cement mortar. A metal pipe was observed running through the NE side of the feature. The feature measured 1.30 m by 1.40 m in plan with a depth of 0.50 m. A large concrete capstone was placed over the bricks.
- 4.3.2 The brickwork was surrounded by a layer of large sub-angular sandstones with larger blocks situated at the corners. This increased the size of the structure to 2.8 m on diameter. The stones were covered by a deposit of ?? [1039] and a deposit of ??
- 4.3.3 The feature appears to be the remains of a stone and brick built well of late 19<sup>th</sup> century date.



Plate 3 Area 3 overhead shot of Pit [1002]



Plate 4 Area 3 E facing shot of Pit [1002]

#### 4.4 Area 3 (50 m x 50 m) Fig 5

4.4.1 A curvilinear pit feature [1002] and a sub-circular pit feature [1005] were revealed in Area 3. The former feature was aligned east to west and had steeply sloping sides and a stony, irregular base. The pit was 2.95 m in length with a maximum width of 1.05 m. The pit varied in depth, with the western end of the feature at 0.08 m and the eastern end reaching 0.45 m. The feature was filled by a primary deposit of compact, orange /brown sandy clay and a tertiary fill of charcoal rich clay silt located within the centre of the feature. No small finds were recovered from the fills during excavation. However, the pit is likely to be of prehistoric date.

4.4.2 The sub-circular pit [1005] was located within the SE of Area 3. This feature measured 1.0 m by 0.85 m in plan and had a depth of 0.35 m. The pit had a broad 'U' shaped profile and an uneven concave base. The pit was filled by a primary deposit of compact sandy, grey clay which contained numerous angular stones. A tertiary fill of medium brown sandy clay [1005] was also recorded. This deposit had occasional flecks of charcoal. Again this pit probably represents the truncated evidence of prehistoric activity.

#### 4.5 Area 4 (50 m x 50 m) Fig 6

4.5.1 A single truncated circular pit was uncovered within Area 4. This feature was located to the west of the original evaluation trench which contained a pit of Neolithic date. The pit was 0.65 m in diameter and had a depth of 0.12 m. The pit had gradually sloping sides with a gently concave base. The pit was filled with a sterile deposit of dark brown sandy silt (1009)

with moderate inclusions of small angular stones. A tertiary fill (1010) was also recorded within the pit. This deposit was dark grey/brown in colour with occasional inclusions of charcoal flecks and sub-angular stones.



Plate 5 Area 5 SW facing section Pit [1032]



Plate 6 Area 5 NW facing section Pit [1026]



Plate 7 Area 5 NW facing section Pit [1011]

#### **4.6 Area 5 (50 m x 50 m) Fig 7**

- 4.6.1 Nine pit features [1011-1014-1016-1018-1020-1022-1024-1026-1030] were recorded within Area 5. Pit [1011] was sub-circular in plan with dimensions of 1.90 m by 1.79 m and a depth of 0.32. The pit appeared lined with a deposit of grey/blue clay from which three pieces of white ceramic were obtained. This lining was overlain by a tertiary deposit of grey/black sandy clay which contained flecks of charcoal and fragments of red sandstone. The pit was cut along its western edge by a ceramic pipe. It is probable that pit [1011] represents the truncated remains of a prehistoric oven.
- 4.6.2 A second possible oven feature [1026] was also recorded. This feature had a rough keyhole shape with steep, almost vertical sides and a flat base. The feature was 2.20 m in length with a maximum width of 1.80 m in the west and 0.80 m to the east. The feature was 0.45 m in depth and again appeared lined with a fine, blue/grey clay (1029). This was overlain by a secondary deposit of organic material and re-deposited natural (1028) and a tertiary deposit of grey/brown sandy clay (1027) which contained occasional fragments of charcoal.
- 4.6.3 The remaining seven pit features [1014-1016-1018-1020-1022-1024-1030] were sub-circular in shape ranging between 0.40 m to 0.85 m in diameter and between 0.16 m and 0.29 m in depth. The pits were steep sided, with irregular flat and gently concave bases. The pits were filled with similar deposits of sandy clay.

## **5 DISCUSSION**

- 5.1 The archaeological works completed at Ravelrig Road have revealed the existence of both prehistoric and post-medieval activity.
- 5.2 Several of the pit features excavated during the earlier evaluation phase produced decorated Neolithic ceramics revealing prehistoric activity occurring within the immediate locale. The area surrounding the Ravelrig Road site has produced a number of important sites and isolated finds of prehistoric date. To the west of the site lie the later prehistoric hill forts of Kaimes Hill and Dalmahoy Hill. At Kaimes Hill, a barbed flint arrowhead of Late Neolithic/Early Bronze Age date was found (Hoy 1988) and at Dalmahoy several cup-marks were discovered close to the summit (Naddair 1989). A further cup and ring marked slab was discovered to the north of the site at Gowanhill.
- 5.3 At Dalmahoy Quarry, excavation revealed the remains of a later prehistoric enclosure with an internal circular structure (of potentially three phases) (Maguire, D 2009). Further prehistoric settlement evidence occurs to the south of the site at Harlaw where several enclosures (SM6188) are visible as crop-marks.

## **6 CONCLUSION AND RECOMENDATIONS**

- 6.1 The archaeological evaluation and subsequent excavation revealed a limited yet significant suite of archaeological features and material including pits and ceramics of Neolithic date.
- 6.2 The archaeological works have provided a safeguard for all the archaeological remains within the excavated areas, and these features have been fully recorded prior to their removal by the development.
- 6.3 Given the nature and significance of the archaeological material it is recommended that further mitigation in the form of a a post-excavation research design will be prepared for approval by the planning authority's archaeological advisor. This will describe all necessary and appropriate assessment processes and consequent post-excavation analyses together with publication proposals for the final report. This report will integrate the stratigraphic, contextual and descriptive data from the excavation with specialist post-excavation analyses covering dating, palaeoenvironmental and economic issues, culminating in an article fit for academic publication.

## 7 REFERENCES

### 7.1 Bibliographic References

Hoy, M. (1988b) *Kaimes Hill (Ratho parish), flint flake'*, *Discovery Excav Scot*, 1988. Page(s): 18

Maguire, D. (2009a) *Ravelrig Quarry, Kirknewton, City of Edinburgh (Ratho parish), evaluation and excavation'*, *Discovery Excav Scot, New*, vol. 10, 2009. Cathedral Communications Limited, Wiltshire, England. Page(s):77

Naddair, K. (1989b) *Dalmahoy hillfort (Ratho parish), cup mark site'*, *Discovery Excav Scot*, 1989. Page(s):51

Scottish Government 2011 *PAN2/2011 Planning and Archaeology*.

Scottish Government 2014 *Scottish Planning Policy*.

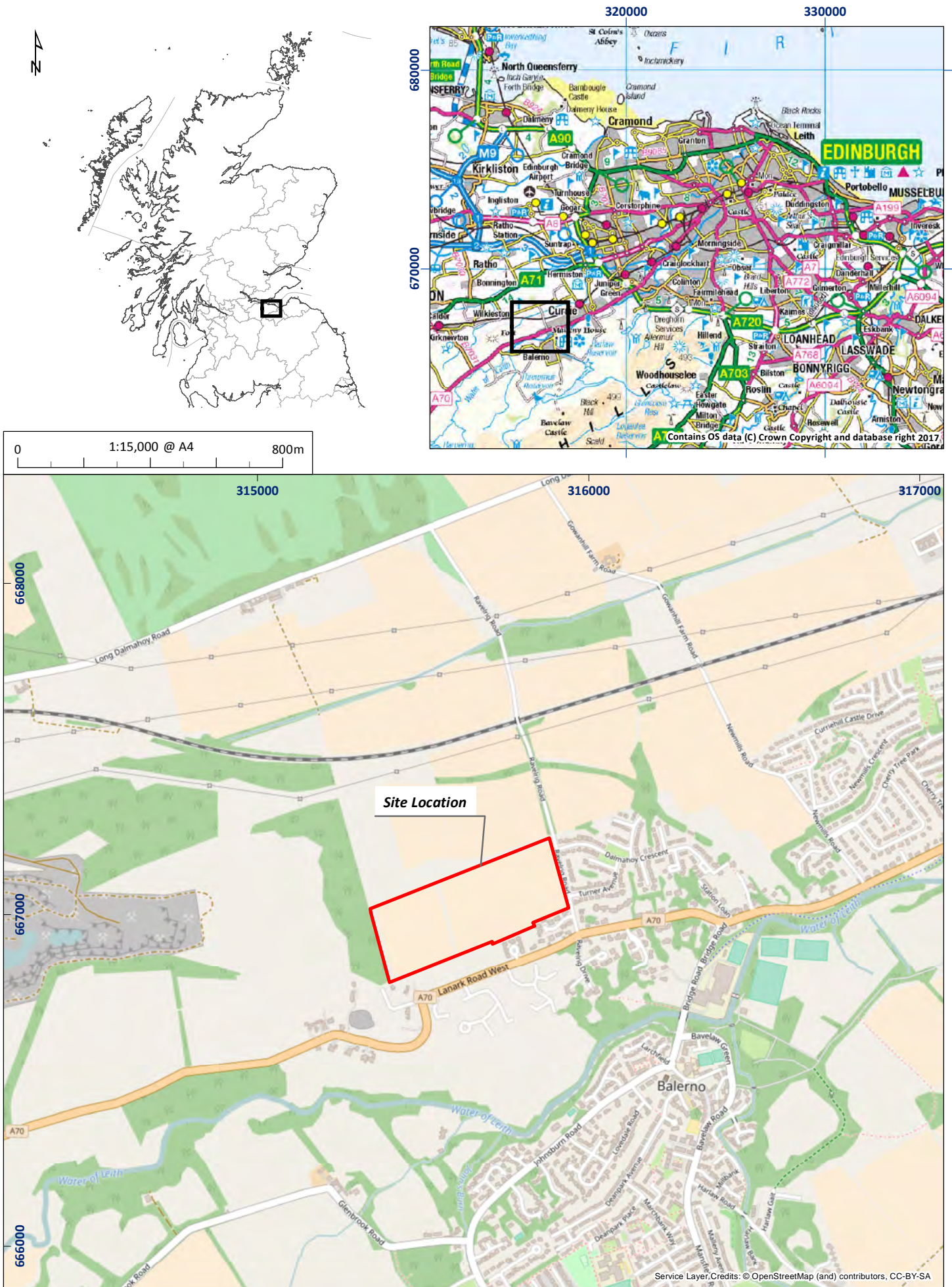


Figure 1: Location of the survey area





Figure 2: Excavation Areas Location Plan

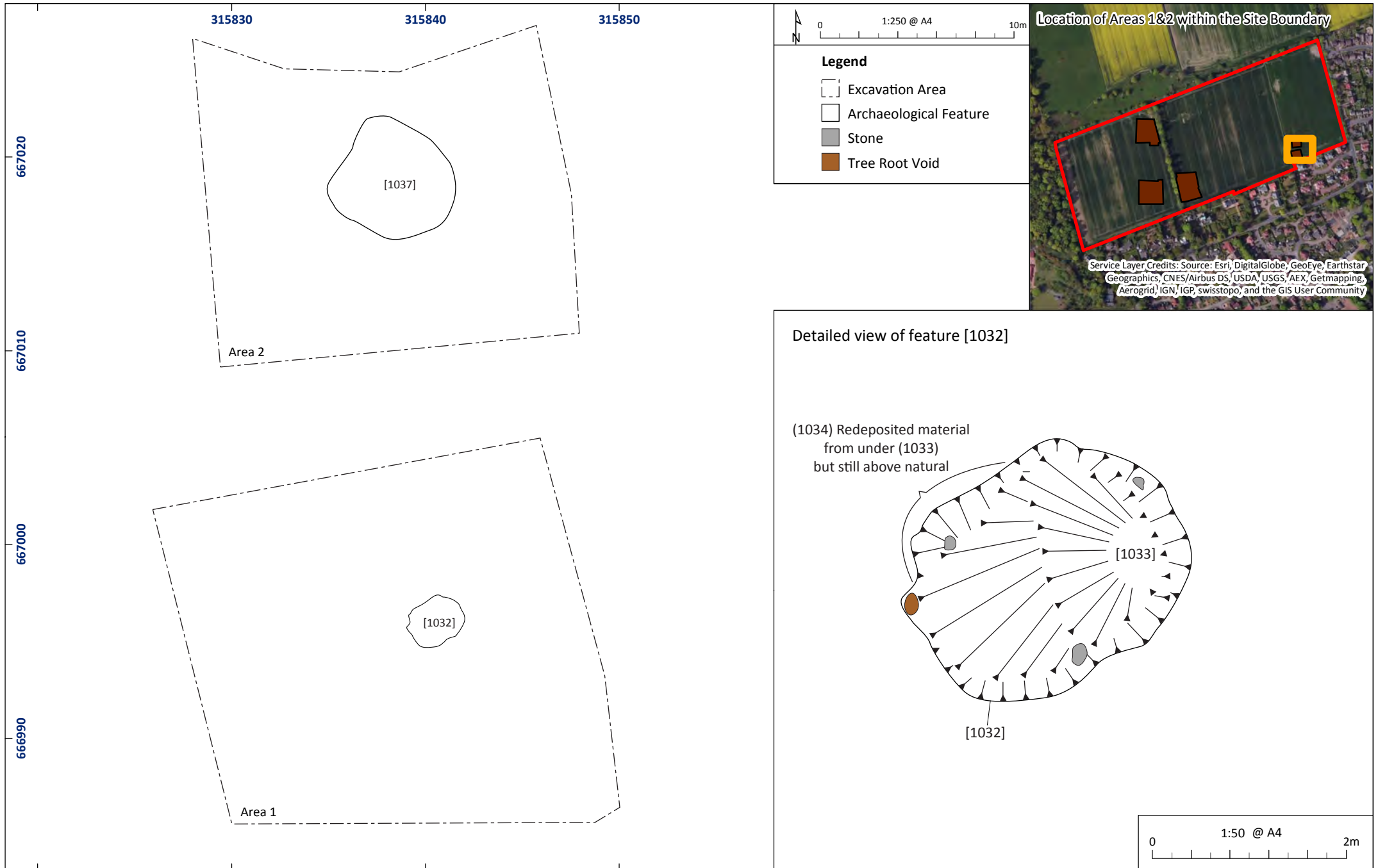


Figure 3: Features within Excavation Areas 1 and 2

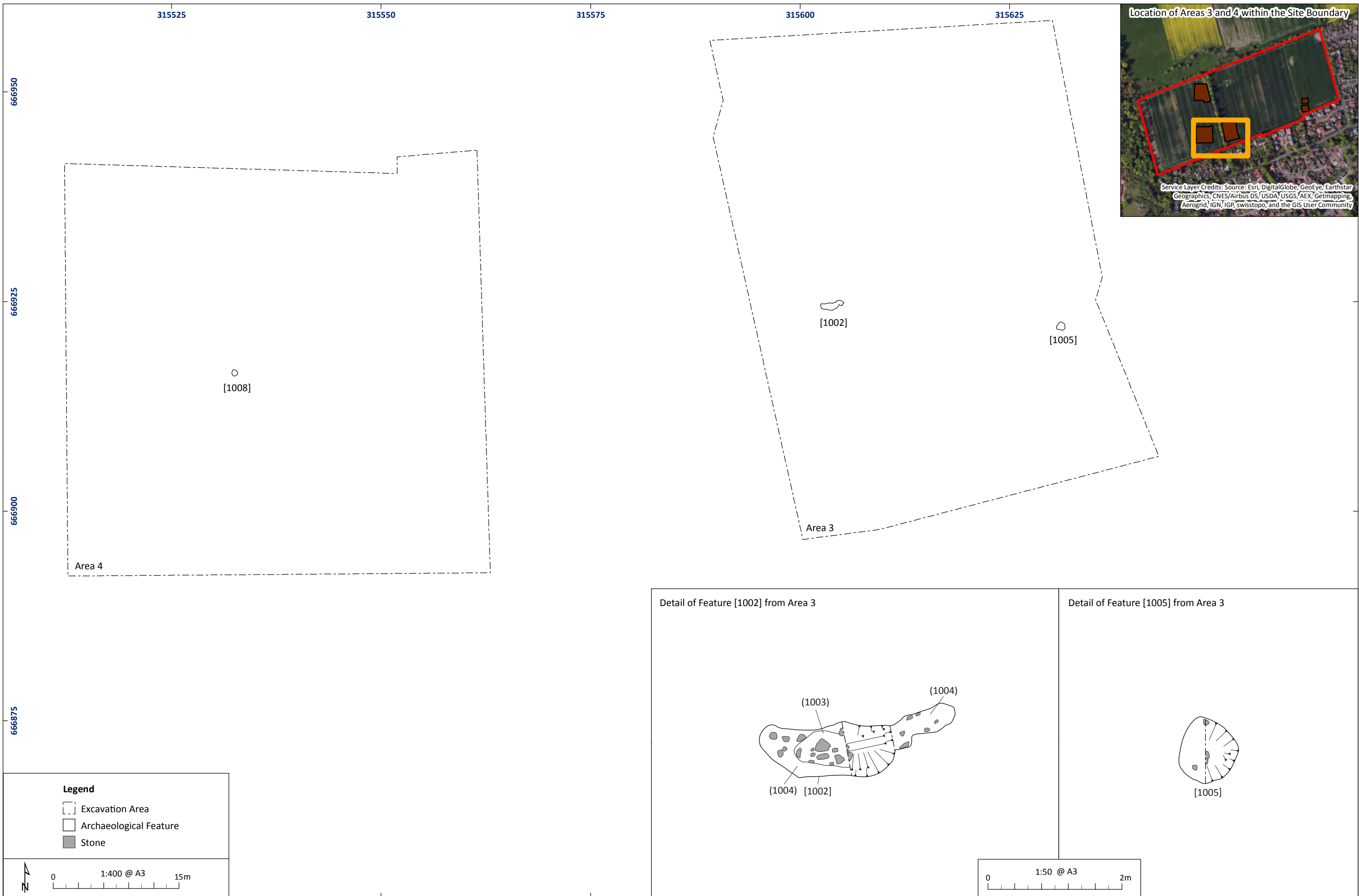


Figure 4: Features within Excavation Areas 3&4

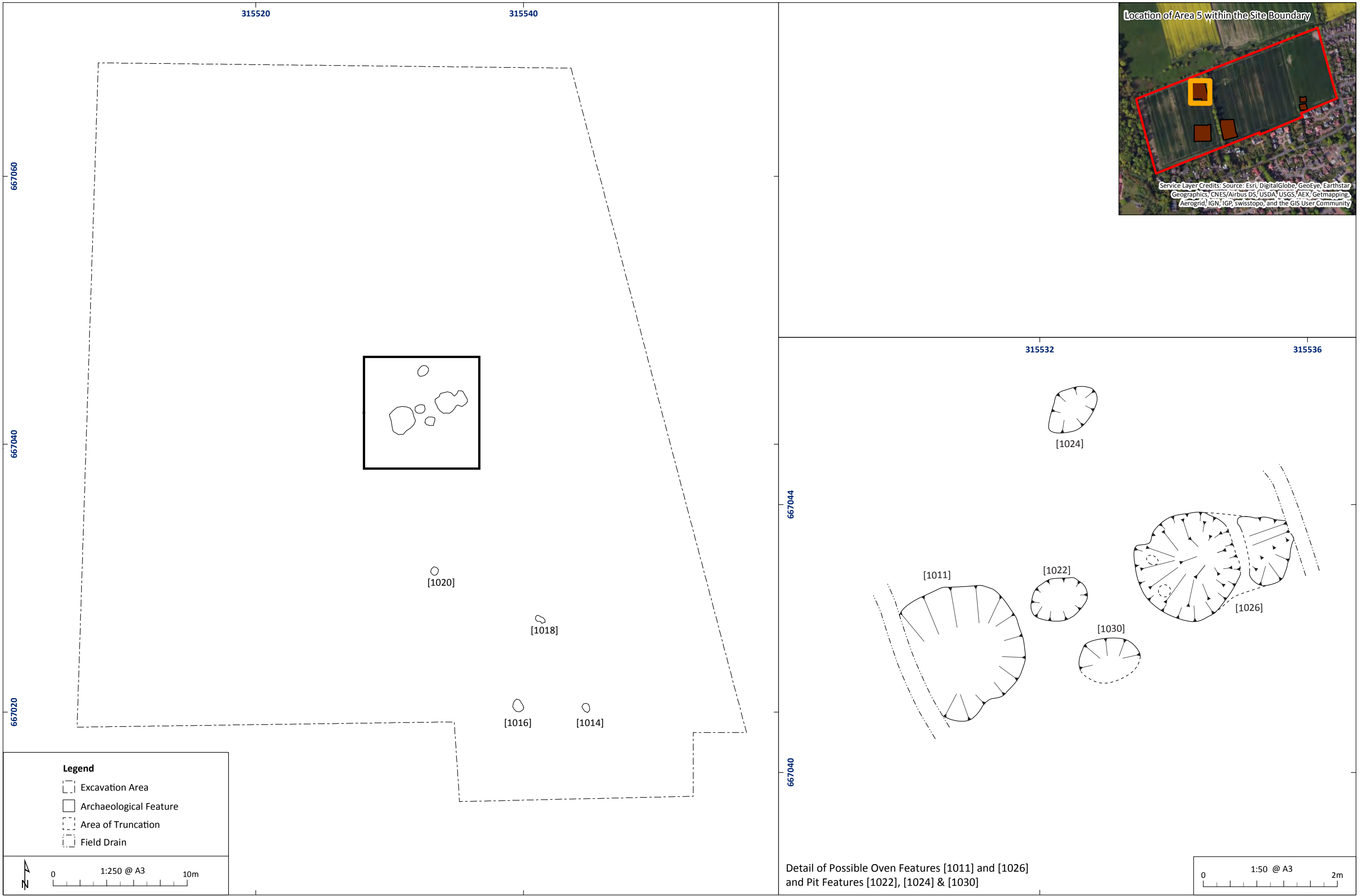


Figure 5: Features within Excavation Area 5

**Ravelrig Road,  
Balerno, Edinburgh:  
Archaeological Excavation  
Data Structure Report**

**Section 2: Appendices**

## APPENDIX 2: CONTEXT REGISTER

Context	Description	Area
1000	<b>Natural Subsoil</b>	1-5
1001	<b>Topsoil</b>	1-5
1002	Cut of linear/pit in the West of Area 3. Aligned East-West, has a steep-sloping side on the South and a very steep/vertical side on the North with some breaks in slope. The base is stony, irregular, and slopes downwards East to West and is shallow at the Eastern end. 2.9m (L) x 0.7m (W) x 0.4m (D) <b>Cut of Linear/Pit, Unknown Date</b>	3
1003	Black, loose-medium, clay silt fill of [1002]. Contains varying sizes of mostly angular/sub-angular stones and abundant charcoal flecks. Max thickness 0.08m. <b>Upper Fill of Cut [1002]</b>	3
1004	Mid orange-brown, medium compaction, sandy clay fill of [1002]. Contains varying sizes of sub-rounded stones. Max thickness 0.38m. <b>Lower Fill of Cut [1002]</b>	3
1005	Circular cut of pit in SE of Area 3. Sloping sides and a concave base. 1.0m (L) x 0.85m (W) x 0.35m (D). <b>Cut of circular pit, possibly large stonehole.</b>	3
1006	Mid-brown, medium compaction, sandy clay upper fill of [1005]. Contains occasional charcoal flecks and a few small sub-rounded/sub-angular stones. <b>Upper Fill of Cut [1005]</b>	3
1007	Mid grey-brown, medium compaction, sandy-clay lower fill of [1005]. Contains a lot of angular and flat stones, some which lie directly on cut [1005]. <b>Lower Fill of Cut [1005]</b>	3
1008	Semi-circular in plan, BOS Top = sharp, BOS Bottom = gradual. Gradually sloping sides with a flat to concave base. Located West of original evaluation trench and Neolithic pit. 0.65m (L) x 0.63 (W) x 0.12 (D). <b>Cut of small, shallow Pit</b>	4
1009	Dark brownish sandy-silt with moderate inclusions of small angular stones with some larger stones in the fill. <b>Lower Fill of Cut [1008]</b>	4
1010	Dark greyish-black sandy silt with flecks of charcoal, infrequent inclusions of small angular stones. <b>Upper Fill of Cut [1008]</b>	4
1011	Large, semi-circular pit in plan, BOS Top = gradual, BOS Bottom = gradual. Gradually sloping sides with a slightly concave base. Located N of [1020], W of [1022], [1026]. 1.90m (L) x 1.79 (W) x 0.32m (D). <b>Cut of large pit, possibly clay-lined</b>	5
1012	Greyish-black sandy clay, flecks of charcoal and red sandstone throughout, medium grain. Much more of this fill was encountered in the SE half when fully excavated. <b>Upper Fill of Cut [1011]</b>	5
1013	Greyish-blue clay, moderate inclusions of small to medium angular stones. Fine to medium grain. Many large stones present in this fill around the edge of the SE half when fully excavated. (Finds include a few small pieces of ceramic x3) <b>Lower Fill of Cut [1011]</b>	5
1014	Oval in plan, BOS Top = gradual, BOS Bottom = gradual, gradually sloping sides	5

	with a small flat base. Located E of [1016] and SE of [1018]. 0.65m (L) x 0.47m (W) x 0.16m (D). <b>Cut of Pit</b>	
1015	Mid greyish-brown sandy clay with very infrequent inclusions of small rounded pebbles. Fine to medium grain. <b>Fill of Cut [1014]</b>	5
1016	Oval to semi-circular in plan, BOS Top = sharp, BOS Bottom = Sharp. Pit with single fill, steeply sloping sides and a flat base. Located SW of [1018] and W of [1014]. 0.84m (L) x 0.63m (W) x 0.29m (D). <b>Cut of Pit</b>	5
1017	Mid greyish-brown clay with infrequent inclusions of small angular stones. <b>Single Fill of Cut [1016]</b>	5
1018	Oblong to oval in plan. BOS Top = sharp, BOS Bottom = sharp. Gradual-steep sloping sides with a flat base. Located NE of [1016], NW of [1014], and SE of [1020]. 0.76m (L) x 0.37m (W) x 0.16 (D). <b>Cut of Pit</b>	5
1019	Mid greyish-brown sandy clay with a few angular stones in cross-section (infrequent in fill). <b>Single Fill of Cut [1018]</b>	5
1020	Circular in Plan, BOS Top = steep, BOS Bottom = gradual. Gradually sloping sides with a concave base. Located NW of [1018], [1014], and [1016]. 0.52m (L) x 0.53m (W) x 0.18m (D). <b>Cut of Shallow Pit</b>	5
1021	Mid greyish-brown sandy clay with low frequency of small to medium angular stones. Fine to medium grain. <b>Fill of Cut [1020]</b>	5
1022	Semi-circular in plan. BOS Top = steep, BOS Bottom = steep, sharply sloping sides with a flat base. Located between [1011] and [1026]. 0.71m (L) x 0.64m (W) x 0.22m (D). <b>Cut of Pit</b>	5
1023	Filled with dark black, loose, medium grained sandy silt. No stones or pebbles present. No clay present, unlike the other features nearby. <b>Single Fill of Cut [1022]</b>	5
1024	Oval in plan, BOS Top = sharp, BOS Bottom = gradual, gradually sloping sides with a slightly concave base. Located N of [1022], NW of [1026], and NE of [1011]. 0.85m (L) x 0.64m (W) x 0.21m (D). <b>Cut of Oval Pit</b>	5
1025	Entire pit was filled with blueish-grey clay down until the natural, infrequent inclusions of small angular stones. <b>Fill of Cut [1024]</b>	5
1026	Large circular pit cut in plan with irregular shaped cut adjoining to the Eastern end. Cut into the yellow sand natural. <b>Cut of large, circular pit, possibly clay-lined.</b>	5
1027	Mid greyish-brown, loose, sandy clay. Moderate angular small to medium sandstone fragments. Occasional charcoal fragments. Max thickness 0.25m. <b>Upper Fill of Cut [1026] mixed in with natural large rocks.</b>	5
1028	Mixture of dark greyish-black friable of silty sandy clay. Possibly organic rich deposit and yellowish blue/grey sand (redeposited natural?). Further large sandstone rocks. Max thickness 0.20m, tip lines visible. <b>Secondary Fill of Cut [1026], present more in S half of pit.</b>	5

1029	Blueish-grey clay. Max thickness 0.10m. <b>Lower Fill – clay lining of Cut [1026]. In base and halfway up the sides. Natural is yellow sand in this area.</b>	5
1030	Oval shape in plan. Cut much more apparent on the NW end, possibly truncated at the SE end. Located SE of [1026]. <b>Possible pit but very shallow, could be smear but is very truncated</b>	5
1031	Dark greyish-black silty sandy clay possibly burnt/organic material. Moderate small angular sandstone rocks. <b>Possible fill or deposit within hollow in natural pits with similar material nearby at [1011], [1022], [1026], and [1024].</b>	5
1032	Oval in plan, BOS Top = sharp, BOS Bottom = Sharp, large pit with steeply sloping sides with a large base sloping down to the East. Located in the centre of Area 1. 2.85m (L) x 2.21m (W), 0.83m (D). <b>Cut of Large Pit, possibly associated with old tree stump, truncated in the NW corner</b>	1
1033	Mid grey in colour, silty sand with sections of decayed tree roots throughout. Moderate inclusions of medium to large angular stones throughout. Medium to fine grain. Contained 6 pieces of glass and 1 ceramic sherd. <b>Fill and Remains of Tree in Cut [1032]</b>	1
1034	Light to mid brown sandy soil. Moderate inclusions of small to medium angular stones. Fine to medium grain. <b>Redeposited material from under [1033] but still above the natural in pit [1032], material left after truncation</b>	1
1035	Dark greyish brown, friable, sandy clay. Max thickness 0.60m. Finds included blue and white decorated china SF 012. <b>Deposit over well and beneath the subsoil. Interface between well, fill (1039), and subsoil [1001]</b>	2
1036	Approximately circular in plan. The natural includes yellowish grey sand and clays. <b>Construction Cut of Well, not fully excavated, only seen in plan</b>	2
1037	Red brick, 5 courses high, 3 bonded sides, and all except NW face, no wall here. U-shape in plan. Bricks are 0.26m x 0.12m x 0.09m. Red brick, frogged, stamped. Greyish-white cement mortar bonding. Brick stamp, 1 brick was removed and kept. Overall size 1.30m (L) x 1.40m (W) x 0.50m (D). <b>Brick lining of well with metal pipe going through it on NE facing side.</b>	2
1038	Medium to large sub angular sandstone rocks piled in an approximately sub-angularr arrangement and then stacked around the inner well area. Larger blocks on the corners. The piled inner is approximately 2.8m (L) x 2.8m (W) x 0.6m (D). <b>Stone construction of well with outer radius of stones at lower level and then built up to height of 0.50m to just below the top of the brick lining.</b>	2

## APPENDIX 2: PHOTOGRAPHIC REGISTER

### Digital Camera 1:

Old Number	Area	Description	Taken From	Date
001	1	Pre-excavation shot of pit found in evaluation	N	29/11/16



Ravelrig Road, Balerno, Edinburgh

002	1	Pre-excavation shot of pit found in evaluation	W	29/11/16
003	1	Pre-excavation shot of pit found in evaluation	S	29/11/16
004	1	Pre-excavation shot of pit found in evaluation	E	29/11/16
005	1	General shot of pit found in evaluation within Area 1	S	29/11/16
006	2	Pre-excavation shot of well	S	29/11/16
007	2	Pre-excavation shot of well	S	29/11/16
008	2	Pre-excavation shot of well	N	29/11/16
009	2	Pre-excavation shot of well	N	29/11/16
010	3	Strip – Archaeologically blank area	E	30/11/16
011	3	Strip – Archaeologically blank area	E	30/11/16
012	3	Strip – Archaeologically blank area	W	30/11/16
013	3	Large boulders and outcropping bedrock – example shot	N	30/11/16
014	3	NW facing section showing topsoil approximately 0.3m thick over natural	NW	30/11/16
015	3	Strip – Archaeologically blank area	E	30/11/16
016	3	Strip – Archaeologically blank area	E	30/11/16
017	3	Strip – Archaeologically blank area	E	30/11/16
018	3	Strip – Archaeologically blank area	W	30/11/16
019	3	S facing section showing topsoil approximately 0.4m thick over natural	S	30/11/16
020	3	Pre-excavation shot of linear/pit found during evaluation	S	30/11/16
021	3	Close up pre-excavation shot of linear/pit found during evaluation	S	30/11/16
022	3	Pre-excavation shot of linear/pit found during evaluation	W	30/11/16
023	3	Possible linear in Area 3	N	30/11/16
024	3	Possible linear in Area 3	N	30/11/16
025	3	Possible linear in Area 3	E	30/11/16
026	3	Strip – Archaeologically blank area	E	30/11/16
027	3	Possible feature	S	30/11/16
028	3	Strip – Archaeologically blank area	E	30/11/16
029	3	Strip – Archaeologically blank area	E	30/11/16
030	3	Possible feature	SE	30/11/16
031	3	Strip – Archaeologically blank area	W	30/11/16
032	3	W facing section	W	30/11/16
033	3	W facing section	W	30/11/16
034	3	Strip – Archaeologically blank area	E	01/12/16
035	3	Strip – Archaeologically blank area	E	01/12/16
036	3	Strip – Archaeologically blank area	E	01/12/16
037	3	SW facing section	SW	01/12/16
038	3	SW facing section	SW	01/12/16
039	3	Strip – Archaeologically blank area	E	01/12/16
040	3	Strip – Archaeologically blank area	E	01/12/16

Ravelrig Road, Balerno, Edinburgh

042	3	Strip – Archaeologically blank area	W	01/12/16
043	3	Possible pit feature	N	01/12/16
044	3	Large boulder in natural – example shot	E	01/12/16
045	3	SE facing section – final strip of Area 3	SE	01/12/16
046	4	Strip 1 of Area 4 – Blank Area	E	1/12/16
047	4	Strip 1 of Area 4 – Blank Area	E	1/12/16
048	4	Strip 1 of Area 4 – Blank Area	W	1/12/16
049	4	North-Facing Section - Blank	N	1/12/16
050	4	Strip 2 – Blank Area (Part Done)	E	1/12/16
051	4	Strip 2 – Blank Area (Part Done)	E	1/12/16
052	4	The superficial geology sandy clay	W	1/12/16
053	4	Strip 2 – Blank Area	W	1/12/16
054	4	Strip 2 – Blank Area – in total	E	2/12/16
055	4	Strip 2 - Blank Area – in total	E	2/12/16
056	4	Strip 2 – Blank Area – in total	W	2/12/16
057	4	South-facing section	S	2/12/16
058	4	Possible feature cut into the natural	NW	2/12/16
059	4	Possible feature cut into the natural	SW	2/12/16
060	4	NW-facing half section of stone hole	NW	2/12/16
061	4	NW-facing half section of stone hole	NW	2/12/16
062	4	Strip (N-S) – Blank Area	S	2/12/16
063	4	E-facing section	E	2/12/16
064	4	E-facing section	E	2/12/16
065	4	N-S Strip – Blank Area	W	2/12/16
066	4	N-S Strip – Blank Area	W	2/12/16
067	4	N-S Strip – Blank Area	S	2/12/16
068	4	Possible pit – SE of Neolithic Pit	W	2/12/16
069	4	Possible pit – SE of Neolithic Pit	W	2/12/16
781	4	General		5/12/16
782	4	General		5/12/16
783	4	General		5/12/16
784	4	General		5/12/16
070		Void	N	6/12/16
071	4	General Shot – Blank N-S Strip	N	6/12/16
072	4	General Shot and Outcropping Boulders	N	6/12/16
073	4	General Shot – Blank Area	S	6/12/16
074	4	SW-Facing section	SW	6/12/16
075	5	Void	S	6/12/16
076	5	E-Facing section – Strip 1	E	6/12/16
077	5	Blank Area	S	6/12/16
078	5	Blank Area – Strip 1	S	6/12/16
079	5	Strip 2 – Blank Area	N	7/12/16
080	5	Strip 2 - Blank Area (Rubble Drain)	N	7/12/16
081	5	Outcropping bedrock	NW	7/12/16
082	5	Previous feature from evaluation, stone hole	N	7/12/16
083	5	E-W rubble drain example	N	7/12/16
084	5	Strip 2 – Blank Area	S	7/12/16
085	5	NW-facing section (South end of)	NW	7/12/16
086	5	NW-facing section (strip of North end)	NW	7/12/16

Ravelrig Road, Balerno, Edinburgh

087	5	Possible pit – Tested and discarded	NW	7/12/16
088	5	Possible pit – Tested and discarded	N	7/12/16
089	5	Possible pit or post-hole, 1 of 4, S end of Area	N	7/12/16
090	5	Possible pit or post-hole, 2 of 4, S end of Area	N	7/12/16
091	5	Possible pit or post-hole, 3 of 4, S end of Area	N	7/12/16
092	5	Possible pit or post-hole, 4 of 4, S end of Area	N	7/12/16
093	5	N end of Area 5 – Blank Area	S	7/12/16
094	5	N end of Area 5 – Blank Area	E	7/12/16
095	-	Void	-	-
096	5	Easternmost strip – Blank Area	S	8/12/16
097		Void		8/12/16
098		Void		8/12/16
099	3	E-Facing section of Slot in [1002]	E	8/12/16
100	3	W-Facing section of Slot in [1002]	W	8/12/16
101	3	General shot of [1002]	W	8/12/16
102	3	General shot of [1002]	E	8/12/16
103	3	Plan shot of slot in [1002]	Above	8/12/16
104	3	Possible pit or stone hole feature	E	8/12/16
105	3	Possible pit or stone hole feature	S	8/12/16
106	3	Post-ex shot of [1002]	W	9/12/16
107	3	Post-ex shot of [1002]	W	9/12/16
108	3	Post-ex shot of [1002]	N	9/12/16
109	3	Post-ex shot of [1002]	E	9/12/16
110	4	Pre-Ex shot of [1008]	W	9/12/16
111	4	VOID (Pre-ex shot, dirt smear)	W	9/12/16
112	3	E-Facing section of [1005]	E	9/12/16
113	3	Plan Shot of Section [1005]	Above	9/12/16
114	3	General shot of [1005]	E	9/12/16
115	3	Post-ex shot of [1005]	E	9/12/16
116	3	Post-ex plan shot of [1005]	Above/E	9/12/16
117	4	Mid-ex shot [1008]	Above	9/12/16
118	4	NW-Facing section [1008]	NW	9/12/16
119	4	Post-ex shot [1008]	Above	9/12/16
120	4	General shots in Area 4	W	9/12/16
121	4	General shots in Area 4	S	9/12/16
122-123	4	General shots in Area 4	E	9/12/16
124	5	Mid-ex shot [1014]	Above	12/12/16
125	5	E-Facing section [1014]	E	12/12/16
126	5	Mid-ex shot [1016]	Above	12/12/16
127	5	NE-facing section [1016]	NE	12/12/16
128	5	Mid-ex shot [1018]	Above	12/12/16
129	5	NE-Facing section [1018]	NE	12/12/16
130	5	Mid-ex shot [1020]	Above	12/12/16
131	5	E-Facing section [1020]	E	12/12/16
132	5	Mid-ex plan [1011]	NW	12/12/16
133	5	NW-Facing section [1011]	NW	12/12/16
134	5	Drain on Edge of [1011]	W	12/12/16
135	5	Mid-ex plan [1022]	Above	12/12/16

Ravelrig Road, Balerno, Edinburgh

136	5	NW-Facing section [1022]	NW	12/12/16
137	5	Mid-ex plan [1024]	Above	12/12/16
138	5	SE-Facing Section [1024]	SE	12/12/16
139	5	Mid-ex plan [1026]	NW	12/12/16
140-141	5	NW-Facing section [1026]	NW	12/12/16
142	5	SW-Facing section [1030]	SW	12/12/16
143	5	Fully excavated pit [1026] truncated by drain at E end	S	13/12/16
144	5	Fully excavated pit [1026] truncated by drain at E end	NW	13/12/16
145	5	Fully excavated, main pit, possible stake holes [1026]	NE	13/12/16
146	5	Pits [1011], [1022], and [1026], and [1030] (smear?)	NE	13/12/16
147	5	Pit [1026] truncated by field drain	E	13/12/16
148	5	Fully excavated pit [1024]	N-NW	13/12/16
149	5	Pit [1024] with pits [1022] and [1026] in background	N-NW	13/12/16
150	5	Post-ex of large pit [1011] truncated by field drain, W end	N	13/12/16
151	5	Post-ex of pit [1022] to E of [1011]	N	13/12/16
152	5	Post-ex of pits [1011] and [1022]	SE	13/12/16
153	5	Post-ex of pit [1011] truncated by drain	E-SE	13/12/16
154	5	Post-ex of pit [1014]	Above/NE	14/12/16
155	5	Post-ex of pit [1016]	Above/NE	14/12/16
156	5	Post-ex of pit [1018]	Above/NE	14/12/16
157	5	Post-ex of pit [1020]	Above/E	14/12/16
158	5	Post-ex of pit [1030]	Above/W	14/12/16
159	5	Test slot – SE-Facing section through infilled hollow/sloping NE natural	SE	14/12/16
160	5	Test slot – SE-Facing section through infilled hollow/sloping NE natural	SE	14/12/16
161	1	Mid-ex shot [1032]	N	15/12/16
162	1	Mid-ex shot [1032]	W	15/12/16
163	1	Mid-ex shot [1032]	E	15/12/16
164	1	N-Facing section [1032]	N	15/12/16
165	2	Post-cleaning of the well [1035-1039]	NE	15/12/16
166	2	Post-cleaning of the well [1035-1039]	SE	15/12/16
167	2	Post-cleaning of the well [1035-1039]	SW	15/12/16
168	2	Post-cleaning of the well [1035-1039]	NW	15/12/16
169	2	Larger kerb stone on N corner [1038]	N	15/12/16
170	2	Close up of NE-Facing side [1037]	NE	15/12/16
171	2	Corroded metal pipe on NE-Face [1037]	NE	15/12/16
172	2	Close up of SE-Facing side [1037]	SE	15/12/16
173	2	Brick stamp of brick at NE corner [1037]	Above	15/12/16
174	2	Shot of location of brick [1037]	SE	15/12/16
175	2	General shot of well [1035-1039]	S	15/12/16
176-	2	Shots of well for photogrammetry [1035-1039]	VAR	16/12/16

263				
264	1	Post-ex shot of [1032]	N	16/12/16
265	1	Post-ex shot of [1032]	E	16/12/16
266	1	Post-ex shot of [1032]	S	16/12/16
267	1	Post-ex shot of [1032]	W	16/12/16

### APPENDIX 3: DRAWING REGISTER

No.	Context	Description	Scale
1	1002	E-Facing section of Slot in [1002]	1:10
2	1002	W-Facing section of Slot in [1002]	1:10
3	1002	Plan of Linear/Pit [1002]	1:20
4	1005	E-Facing section of [1005]	1:10
5	1005	Plan of [1005]	1:20
6	1026	W-Facing section of Pit [1026]	1:10
7	1011	NW-Facing section of Pit [1011]	1:10
8	1026	W-Facing section of Pit [1026]	1:10
9	1011, 1022, 1024, 1026, 1030	Plan of Pits [1011], [1022], [1024], [1026], [1030]	1:20
10	1032	N-Facing section of [1032]	1:10
11	1032	Plan of Pit [1032]	1:50

### APPENDIX 4: SMALL FINDS REGISTER

No.	Context	Description
001	1027	4 ceramic pot sherds
002	1019	7 ceramic sherds
003	1019	1 worked and burnt bone fragment
004	1019	4 pieces of glass
005	1019	1 pipestem
006	1019	Unknown, possible weight
007	1013	3 ceramic sherds
008	1021	2 ceramic sherds
009	1021	2 pieces of glass
010	1017	16 ceramic sherds
011	1017	5 pieces of glass
012	1035	4 sherds of blue and white china including broken handle
013	1039	4 ceramic sherds (2 general, 2 handle)
014	1033	2 ceramic sherds
015	1033	6 pieces of glass
016	1037	Brick from well (stamped)

017	Unstratified	2 ceramic sherds, found near [1032]
-----	--------------	-------------------------------------

**APPENDIX 5: SAMPLE REGISTER**

Context	Quantity (Litres)
1003	10
1004	20
1006	20
1007	10
1009	10
1010	10
1012	10
1013	10
1015	10
1017	10
1019	10
1021	10
1023	10
1025	10
1027	10
1028	10
1029	10
1031	10
1033	20
1034	10

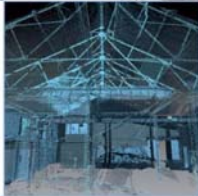
## APPENDIX 6: 'DISCOVERY AND EXCAVATION IN SCOTLAND' REPORT

<b>LOCAL AUTHORITY:</b>	City of Edinburgh Council
<b>PROJECT TITLE/SITE NAME:</b>	Ravelrig Road, Balerno, Edinburgh
<b>PROJECT CODE:</b>	23135
<b>PARISH:</b>	Glasgow
<b>NAME OF CONTRIBUTOR:</b>	Genevieve Shaw
<b>NAME OF ORGANISATION:</b>	AOC Archaeology Group
<b>TYPE(S) OF PROJECT:</b>	Archaeological Excavation
<b>NMRS NO(S):</b>	N/A
<b>SITE/MONUMENT TYPE(S):</b>	Prehistoric pits & post medieval well
<b>SIGNIFICANT FINDS:</b>	None
<b>NGR (2 letters, 6 figures)</b>	NT 15668 67031
<b>START DATE (this season)</b>	29 <sup>th</sup> November 2016
<b>END DATE (this season)</b>	16 <sup>th</sup> December 2016
<b>PREVIOUS WORK (inc DES)</b>	Ravelrig Road, Balerno, Edinburgh Evaluation Report AOC Archaeology Unpublished Report
<b>MAIN (NARRATIVE) DESCRIPTION:</b> (May include information from other fields)	<p>A programme of archaeological works consisting of a monitored topsoil strip and excavation was undertaken by AOC Archaeology Group on land at Ravelrig Road, Balerno, Edinburgh (NT 15668 67031) .</p> <p>An initial evaluation was undertaken in August 2016. This revealed a series of archaeological remains including pits, a ditch feature and a concentrated spread of decorated Neolithic ceramics.</p> <p>Subsequent mitigation consisted of the topsoil stripping and excavation of five areas centered on the known archaeology recorded during the evaluation.</p> <p>The excavation revealed thirteen pit features, two of which are possible clay lined ovens. It is probable that these features are an extension of the prehistoric material recorded during the evaluation undertaken in July 2016.</p>
<b>PROPOSED FUTURE WORK:</b>	Yes
<b>CAPTION(S) FOR ILLUSTRATIONS:</b>	N/A
<b>SPONSOR OR FUNDING BODY:</b>	
<b>ADDRESS OF MAIN</b>	AOC Archaeology Group

**Ravelrig Road, Balerno, Edinburgh**

<b>CONTRIBUTOR:</b>	Edgefield Road Industrial Estate Loanhead, Midlothian, EH20 9SY
<b>EMAIL ADDRESS:</b>	admin@aocarchaeology.com
<b>ARCHIVE LOCATION</b>	Archive to be deposited in NMRS





**AOC Archaeology Group**, Edgefield Industrial Estate, Edgefield Road, Loanhead EH20 9SY  
tel: 0131 440 3593 | fax: 0131 440 3422 | e-mail: [edinburgh@aocarchaeology.com](mailto:edinburgh@aocarchaeology.com)

[www.aocarchaeology.com](http://www.aocarchaeology.com)