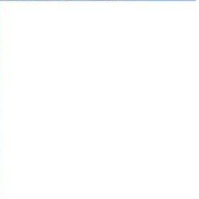
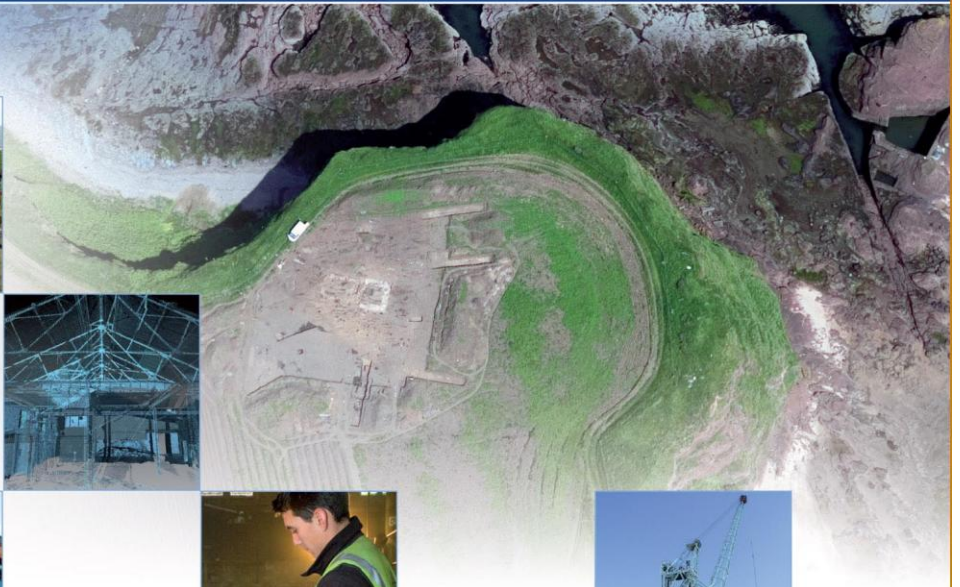


# Weirston Road, Kilwinning, North Ayrshire: Archaeological Evaluation Data Structure Report

AOC 23756  
29<sup>th</sup> March 2017



ARCHAEOLOGY

HERITAGE

CONSERVATION

---

# Weirston Road, Kilwinning, North Ayrshire: Archaeological Evaluation Data Structure Report

---

**On Behalf of: Mast Architects**  
51 St Vincent Crescent  
Glasgow  
G3 8NQ

**National Grid Reference (NGR): NS 31375 43185**

**AOC Project No: 23756**

**Planning Application No: N/16/01162/PPM**

**OASIS No: aocarcha1-280682**

**Prepared by: Kevin Paton**

**Date of Fieldwork: 21<sup>st</sup> & 22<sup>nd</sup> March 2017**

**Date of Report: 29<sup>th</sup> March 2017**

**This document has been prepared in accordance with AOC standard operating procedures.**

**Author: Kevin Paton**

**Date: 29<sup>th</sup> March 2017**

**Approved by: Ross Murray**

**Date: 29<sup>th</sup> March 2017**

**Draft/Final Report Stage: Draft**

**Date:**

**Enquiries to:** AOC Archaeology Group  
Edgefield Industrial Estate  
Edgefield Road  
Loanhead  
EH20 9SY

Tel. 0131 440 3593  
Fax. 0131 440 3422  
e-mail. [edinburgh@aocarchaeology.com](mailto:edinburgh@aocarchaeology.com)



## Contents

	<b>Page</b>
List of Illustrations .....	2
List of Plates .....	2
List of Appendices .....	2
<b>ABSTRACT .....</b>	<b>3</b>
<b>1 INTRODUCTION .....</b>	<b>4</b>
1.1 Background .....	4
1.2 Site Location .....	4
1.3 Historical Background .....	4
<b>2 OBJECTIVES .....</b>	<b>4</b>
<b>3 METHODOLOGY .....</b>	<b>4</b>
<b>4 RESULTS .....</b>	<b>5</b>
<b>5 DISCUSSION .....</b>	<b>9</b>
<b>6 CONCLUSION AND RECOMENDATIONS .....</b>	<b>10</b>
<b>7 REFERENCES .....</b>	<b>10</b>
7.1 Bibliographic references .....	10
7.2 Cartographic references .....	10
<b>Appendix 1: Evaluation Trench Descriptions .....</b>	<b>12</b>
<b>Appendix 2: Context Register .....</b>	<b>15</b>
<b>Appendix 3: Photographic Register .....</b>	<b>17</b>
<b>Appendix 4: Drawing Register .....</b>	<b>18</b>
<b>Appendix 5: Samples Register .....</b>	<b>18</b>
<b>Appendix 6: <i>'Discovery and Excavation in Scotland' Report</i> .....</b>	<b>19</b>

## List of Illustrations

- Figure 1: Site location plan
- Figure 2: Evaluation trench location plan
- Figure 3: Detailed view of features found
- Figure 4: Section drawings of features excavated
- Figure 5: Extract from 1856 Ordnance Survey

## List of Plates

- Plate 1: General view of Trench 5 showing furrows
- Plate 2: General view of ditches [801] and [803]
- Plate 3: General view of ditch [901]
- Plate 4: General view of ring groove [809]/[813]
- Plate 5: General view of ring groove [1001]
- Plate 6: General view of postholes [1009] and [1011]

## List of Appendices

- Appendix 1: Evaluation Trench Descriptions
- Appendix 2: Context Register
- Appendix 3: Photographic Register
- Appendix 4: Drawing Register
- Appendix 5: Samples Register
- Appendix 6: Discovery and Excavation in Scotland Report

## ABSTRACT

---

An archaeological evaluation was undertaken by AOC Archaeology Group prior to a residential development on Weirston Road, Kilwinning, North Ayrshire.

The evaluation consisted of 600 linear metres of trenching across the development area. The topsoil on site was a ploughed dark grey clay loam overlying orange and purplish grey clay in the majority of the site, with an orange gravel and clayey sand nearer the western edge.

This sand and gravel subsoil was associated with a slightly raised area in the SW corner. Upon this rise, a number of archaeological features were revealed that are suggestive of a prehistoric settlement. The majority of the features were linear and curvilinear ditches that varied from wide and slightly curved stone filled ditches to narrower, curving ditches that could represent enclosures and possible structures respectively. A few pits or posthole features were also revealed.

It is possible that that further archaeological work be required within the development area if the archaeological features uncovered by the evaluation will be impacted by the proposed development. The scope of any further work will be determined by North Ayrshire Council, who are advised on archaeological matters by the West of Scotland Archaeology Service.

## 1 INTRODUCTION

### 1.1 Background

1.1.1 An archaeological evaluation was required by Mast Architects prior to a residential development on Weirston Road, Kilwinning, North Ayrshire. The scope of the works was determined by North Ayrshire Council as advised on archaeological matters by the West of Scotland Archaeology Service (WoSAS). The works were conducted according to the terms of a *Written Scheme of Investigation* (AOC 2017), approved on behalf of North Ayrshire Council by WoSAS and in accordance with *Scottish Planning Policy* (Scottish Government 2014) and *PAN 2/2011 Planning And Archaeology* (Scottish Government 2011).

### 1.2 Site Location

1.2.1 The development area at Weirston Road, Kilwinning is located at the south-eastern edge of the town, bordering onto Eglinton Country Park to the east, and is used as agricultural land related to Corsehillhead Farm. The site is to the immediate west of Weirston Road, with Corsehillhead farm to the south, and the back gardens of properties on Moncur Road to the N and W (NGR: NS 31375 43185; Figure 1).

### 1.3 Historical Background

1.3.1 There are no known historical sites within the development area according to the National Monuments Register (NMRS) and the local Sites and Monuments Register (SMR). The nearest recorded sites are located 500 m to the SE within Eglinton Country Park. These include the find spots of a stone axe head (Canmore ID 42077) and a flint blade (Canmore ID 42091).

1.3.2 According to the Ordnance Survey of 1860, the development area was part of Corsehillhead Farm, depicted as a long house surrounded by several smaller fields to the north that now form the current site. The origins of the farm may predate the 18<sup>th</sup> century as Roys map of 1752-55 also depicts a building in this location, although it is difficult to determine if it is the same structure.

## 2 OBJECTIVES

2.1 The objectives of the archaeological evaluation were:

- i) to determine and assess the character, extent, condition, quality, date and significance of any buried archaeological remains within the proposed development area through evaluation trenching;
- ii) to advise and implement an appropriate form of mitigation, such as excavation, post-excavation analyses and publication, given the infeasibility of preserving the archaeological material *in situ*, should significant archaeological remains be encountered.

## 3 METHODOLOGY

3.1 The evaluation consisted of 13 trenches of varying length and alignment, equating to 1,200 m<sup>2</sup> of linear trench (Figure 2). The trenches were excavated using a 13 tonne tracked excavator equipped with bladed ditching bucket, and operating under the constant supervision of an experienced field archaeologist. Each trench was recorded using AOC *pro forma* trench record sheets, photographed, and any potential features investigated further to assess their character and date.

## 4 RESULTS

4.1 All archaeological works were conducted on the 21<sup>st</sup> and 22<sup>nd</sup> March 2017. Weather conditions were fair throughout the course of the work conducted and archaeological visibility was good. The various data gathered from the evaluation are presented as a series of appendices:

Appendix 1: Evaluation trench descriptions

Appendix 2: Context Register

Appendix 3: Photographic Register;

Appendix 4: Drawing Register

Appendix 5: Samples Register

Appendix 6: *'Discovery and Excavation in Scotland'* entry

4.2 The topsoil throughout the development area was a mid greyish brown clay loam that measured between 0.25 m and 0.55 m in depth. This overlay an orange brown and grey clay in the eastern half of the site, with an orange clayey sand and gravel towards the western edge that was associated with a slight rise in the topography. 19<sup>th</sup> and 20<sup>th</sup> century ceramic fragments were prevalent throughout the topsoil and within the plough scarring noticeable in some areas.

4.3 Regular post medieval furrows and associated ceramic tile drains were noticeable through the clay in the lower part of site, with the majority of these agricultural features aligned SE-NW (Plate 1). The furrows measured between 1.2 m and 2.2 m wide, and were up to 0.16 m in depth, with the majority containing a shallow ceramic tile drain along the SW edge. Other field drains that appeared more modern in date were also visible at greater depths aligned WNW-ESE.

4.4 Within the trenches in the raised area in the SW corner of the site (Trenches 7 to 11), there were fewer of these agricultural features, although ditches [705], [709], [801], [803], [1013], [1017], [1103], and [1105] may be remnants of the furrows seen elsewhere due to their alignment and shallow nature (Plate 2).

4.5 The remainder of the features revealed within Trenches 7 to 11 are all most likely related to earlier activity on site. Ditches [701], [703], [707], [805], [807], [901], [1015], and [1101] are all on the edges of the area containing the archaeological features, and contained numerous large stones within them. Ditches [707], [807] and [901] are potentially the same feature seen curving around the raised area of site (Plate 3).

4.6 Within this raised area there are at least two probable structures evidenced by sections of probable circular ditches [809]/[813] and [1001] (Plate 4&5). These ditch features measured 0.2 m to 0.3 m wide and would enclose circular areas of over 8 m in diameter. Three or four other potential structures may be represented by ditches [1003] and [1007], ditch [903], ditch [819] and [821]. All of these features are narrow ditches that curve within the trenches, and in the case of ditches [819] and [821] also cut through each other; indicating more than one phase of activity.

4.7 Further evidence for potential structures within this area were revealed in postholes [1009] and [1011] that are located to the immediate E of ditch [1007] (Plate 6). These features measured 0.6 m and 0.4 m in diameter respectively and contained large stones that may have been the remains of packing material for posts. Only [1009] was excavated and was revealed to be 0.31 m deep with very steep sides and a flat base. Features [817] and [1005] may also be the remains of postholes or pit features within the enclosure, with [1005] seemingly contained by ditch [1001].

- 4.8 Other features revealed were ditches [811] and [815] that were both aligned E-W and were approximately 7 m apart. Ditch [811] was situated between the terminals of ditches [809] and [813], while [815] was further north.



Plate 1: General view of Trench 5 showing furrows



Plate 2: General view of ditches [801] and [803]





Plate 3: General view of ditch [901]



Plate 4: General view of ring groove [809]/[813]



Plate 5: General view of ring groove [1001]



Plate 6: General view of postholes [1009] and [1011]



## 6 CONCLUSION AND RECOMENDATIONS

- 6.1 The archaeological evaluation of the development area at Weirston Road has been successful in locating a previously unknown settlement site. It is possible that further archaeological works in the form of an area strip and excavation will be necessary within the SW corner of the development area if the archaeology cannot be preserved in situ by the development works.
- 6.2 The scope of any further work will be determined by North Ayrshire Council, who are advised on archaeological matters by the West of Scotland Archaeology Service.

## 7 REFERENCES

### 7.1 Bibliographic references

AOC 2017 *Weirston Road, Kilwinning: Archaeological Evaluation Written Scheme of Investigation*. Unpublished client report

Scottish Government 2014 Scottish Planning Policy.

Scottish Government 2010 PAN 2/2011 Planning & Archaeology.

### 7.2 Cartographic references

1752-55 Roy, William *Military Survey of Scotland*

1856 Ordnance Survey *Ayr XVI.4 (Kilwinning)*

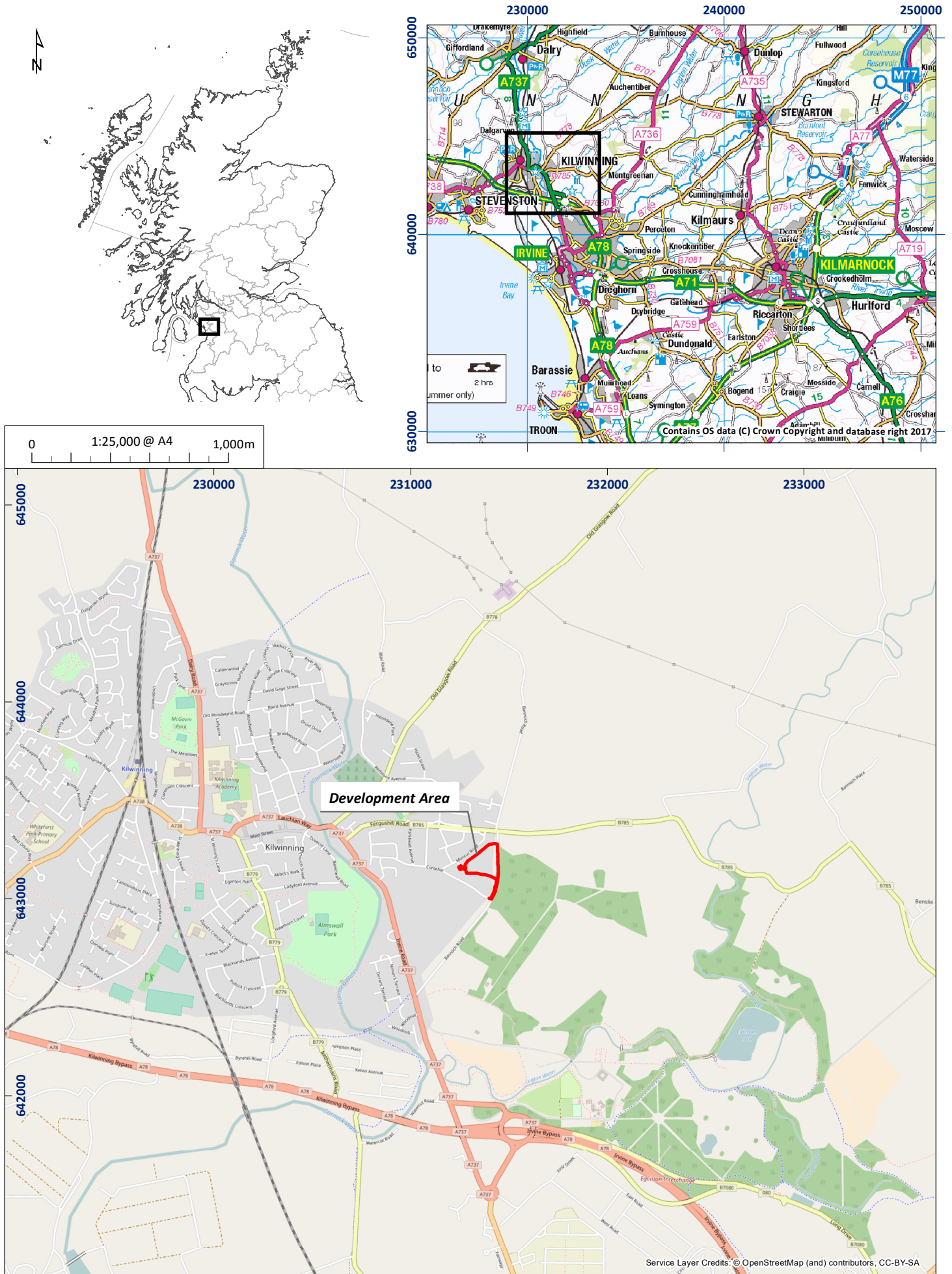




Figure 2: Evaluation trench location plan

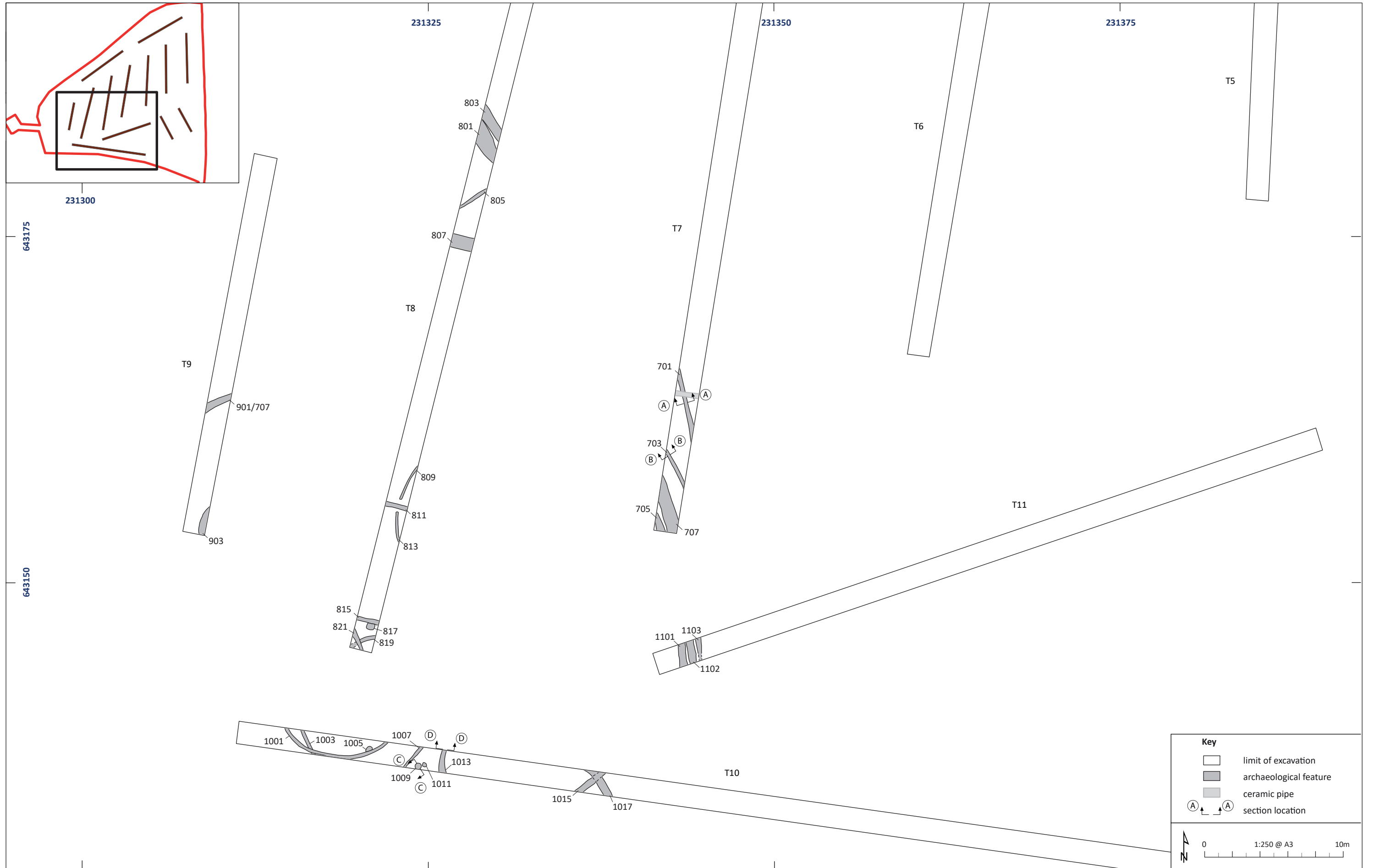
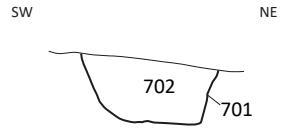


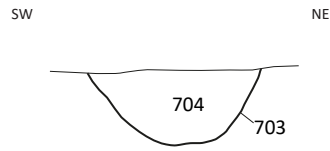
Figure 3: Detailed view of features found

01/23756/EVALREP/03/01

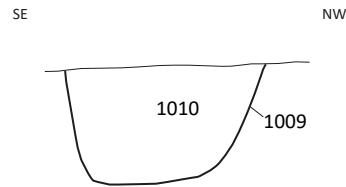
Section AA



Section BB



Section CC



Section DD

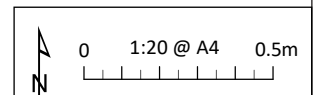
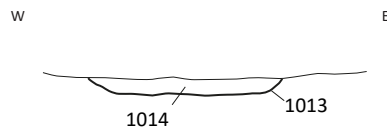


Figure 4: Section drawings of feaures excavated

01/23756/EVALREP/04/01



---

**Weirston Road, Kilwinning, North Ayrshire:  
Archaeological Evaluation  
Data Structure Report**

**Section 2: Appendices**

## Appendix 1: Evaluation Trench Descriptions

### Trench 1

<i>Dimensions</i>	50 m by 2 m
<i>Excavated Area</i>	100 m <sup>2</sup>
<i>Excavated Orientation</i>	NE to SW
<i>Soil make-up</i>	Plough soil – Dark grey clay loam – 0.34 m
<i>Natural Subsoil</i>	Orangey brown and purplish grey clay
<i>Significant Features</i>	None
<i>Other Features</i>	Furrows at 3.6 m; 9 m; 15.8 m; 22 m; 27.6 m; 34 m; 39 m aligned SE-NW and measuring between 1.2 m to 2.2 m wide.
<i>Finds</i>	None

### Trench 2

<i>Dimensions</i>	50 m by 2 m
<i>Excavated Area</i>	100 m <sup>2</sup>
<i>Excavated Orientation</i>	NE to SW
<i>Soil make-up</i>	Plough soil – Dark grey clay loam – 0.38 m Former plough soil from 19 m – mid orangey brown clay loam – 0.3 m
<i>Natural Subsoil</i>	Orangey brown and purplish grey clay until 14 m then compact orange gravel
<i>Significant Features</i>	None
<i>Other Features</i>	Furrows at 7.2 m; 13.2 m; 21 m aligned SE-NW and measuring between 1.2 m to 2.2 m wide. Ceramic tile drains at 32 m; 42.1 m aligned SE-NW
<i>Finds</i>	None

### Trench 3

<i>Dimensions</i>	50 m by 2 m
<i>Excavated Area</i>	100 m <sup>2</sup>
<i>Excavated Orientation</i>	N to S
<i>Soil make-up</i>	Plough soil – Dark grey clay loam – 0.38 m
<i>Natural Subsoil</i>	Orangey brown clay
<i>Significant Features</i>	None
<i>Other Features</i>	Furrows at 9 m to 11.7 m; 19.8 m to 21.7 m; 31 m to 32.6 m; 42 m to 43.6 m aligned SE-NW and measuring between 1.2 m to 2.2 m wide. Ceramic tile drain at 38.7 m; 47.1 m aligned WNW-ESE
<i>Finds</i>	None

### Trench 4

<i>Dimensions</i>	50 m by 2 m
<i>Excavated Area</i>	100 m <sup>2</sup>
<i>Excavated Orientation</i>	N to S
<i>Soil make-up</i>	Plough soil – Dark grey clay loam – 0.31 m
<i>Natural Subsoil</i>	Orangey brown clay
<i>Significant Features</i>	None
<i>Other Features</i>	Furrows at 5.8 m to 8.2 m; 17.5 m to 18.9 m; 26.4 m to 28.7 m; 37 m to 39.7 m aligned SE-NW and measuring between 1.2 m to 2.2 m wide. Ceramic tile drains noted along the SW edge of the furrows. Ceramic tile drain at 11.4 m; 26.7 m; 36 m aligned WNW-ESE
<i>Finds</i>	None

### Trench 5

<i>Dimensions</i>	50 m by 2 m
<i>Excavated Area</i>	100 m <sup>2</sup>
<i>Excavated Orientation</i>	N to S
<i>Soil make-up</i>	Plough soil – Dark grey clay loam – 0.31 m
<i>Natural Subsoil</i>	Orangey brown clay
<i>Significant Features</i>	None
<i>Other Features</i>	Furrows at 6.3 m to 8 m; 14.6 m to 16.8 m; 22.3 m to 24.7 m; 30.4 m to 32.6 m; 38.8 m to 40 m aligned SE-NW and measuring between 1.2 m to 2.2 m wide.

<i>Finds</i>	Ceramic tile drain at 8.7 m; 27.8 m aligned WNW-ESE None
<b>Trench 6</b>	
<i>Dimensions</i>	50 m by 2 m
<i>Excavated Area</i>	100 m <sup>2</sup>
<i>Excavated Orientation</i>	N to S
<i>Soil make-up</i>	Plough soil – Dark grey clay loam – 0.31 m Former plough soil – orangey brown clay loam from 31 m – 0.33 m
<i>Natural Subsoil</i>	Orangey brown and purplish grey clay
<i>Significant Features</i>	None
<i>Other Features</i>	Furrows at 11 m to 12.8 m; 19.3 m to 20.8 m SE-NW and measuring between 1.2 m to 2.2 m wide.
<i>Finds</i>	None
<b>Trench 7</b>	
<i>Dimensions</i>	50 m by 2 m
<i>Excavated Area</i>	100 m <sup>2</sup>
<i>Excavated Orientation</i>	N to S
<i>Soil make-up</i>	Plough soil – Dark grey clay loam – 0.35 m
<i>Natural Subsoil</i>	Orangey brown clay until 20 m then orange clayey sand
<i>Significant Features</i>	Ditch [701]/[702] at 36.3 m; ditch [703]/[704] at 43.5 m; ditch [705]/[706] at 46.4 m; ditch [707]/[708] at 49.5 m; ditch [709]/[710] at 46.4 m.
<i>Other Features</i>	Ceramic tile drain at 6.8 m to 8.3 m aligned SE-NW. Also at 10.5 m; 19.5 m; 28.8 m aligned WNW-ESE.
<i>Finds</i>	None
<b>Trench 8</b>	
<i>Dimensions</i>	50 m by 2 m
<i>Excavated Area</i>	100 m <sup>2</sup>
<i>Excavated Orientation</i>	N to S
<i>Soil make-up</i>	Plough soil – Dark grey clay loam – 0.33 m
<i>Natural Subsoil</i>	Compact orange gravels and orange clayey sand
<i>Significant Features</i>	Ditch [801]/[802] and ditch [803]/[804] – possibly related to features in T7. Ditch [805]/[806]; [807]/[808] at 24.1 m (probably same as [707]); Ditches [809]/[810] and [813]/[814] – ring ditch. Ditch [811]/[812] through gap in [809] and [813]. Ditch [815]/[816]; pit or post hole [817]/[818]; [819]/[820] and [821]/[822] are intercutting ditches.
<i>Other Features</i>	None
<i>Finds</i>	None
<b>Trench 9</b>	
<i>Dimensions</i>	25 m by 2 m
<i>Excavated Area</i>	50 m <sup>2</sup>
<i>Excavated Orientation</i>	N to S
<i>Soil make-up</i>	Plough soil – Dark grey clay loam – 0.36 m
<i>Natural Subsoil</i>	Compact orange gravels and orange clayey sand
<i>Significant Features</i>	Curvilinear ditch [901]/[902] at 11.8 m; Ditch [903]/[904] at 22.3 m
<i>Other Features</i>	Modern pit at 15.2 m
<i>Finds</i>	None
<b>Trench 10</b>	
<i>Dimensions</i>	75 m by 2 m
<i>Excavated Area</i>	150 m <sup>2</sup>
<i>Excavated Orientation</i>	E to W
<i>Soil make-up</i>	Plough soil – Dark grey clay loam – 0.55 m
<i>Natural Subsoil</i>	Compact orange gravels and orange clayey sand until 57 m then purple grey clay
<i>Significant Features</i>	Curvilinear ditch [1001]/[1002] at 3.7 m to 11.6 m intercutting with ditch [1003]/[1004] and pit or post hole [1005]/[1006]. Ditch [1007]/[1008] at 14.3 m

<i>Other Features</i>	Pits or post holes [1009]/[1010] and [1011]/[1012] at 15.6 m Ditch [1013]/[1014] at 17.8 m and ditch [1015]/[1016] at 25 m
<i>Finds</i>	None
<b>Trench 11</b>	
<i>Dimensions</i>	50 m by 2 m
<i>Excavated Area</i>	100 m <sup>2</sup>
<i>Excavated Orientation</i>	SW to NE
<i>Soil make-up</i>	Plough soil – Dark grey clay loam – 0.37 m
<i>Natural Subsoil</i>	Compact orange gravels and orange clayey sand until 30 m then orangey brown clay
<i>Significant Features</i>	Ditches [1101]/[1102], [1103]/[1104] and [1105]/[1106] from 1.3 m to 4.1 m
<i>Other Features</i>	Furrow at 10.2 m to 12.2 m aligned WNW-ESE. Also at 30.7 m; 41 m aligned NW-SE. Ceramic tile drain at 16.6 m to 18.3 m; 18.9 m to 21.2 m aligned WNW-ESE. Also at 37 m aligned NW-SE
<i>Finds</i>	None
<b>Trench 12</b>	
<i>Dimensions</i>	25 m by 2 m
<i>Excavated Area</i>	50 m <sup>2</sup>
<i>Excavated Orientation</i>	NW to SE
<i>Soil make-up</i>	Plough soil – Dark grey clay loam – 0.34 m
<i>Natural Subsoil</i>	Orange brown clay
<i>Significant Features</i>	None
<i>Other Features</i>	Ceramic tile drain at 1.9 m to 3.9 m aligned NW-SE. Furrow at 6.9 m to 10.3 m; 19.4 m to 23.1 m aligned NW-SE
<i>Finds</i>	None
<b>Trench 13</b>	
<i>Dimensions</i>	25 m by 2 m
<i>Excavated Area</i>	50 m <sup>2</sup>
<i>Excavated Orientation</i>	NW to SE
<i>Soil make-up</i>	Plough soil – Dark grey clay loam – 0.36 m
<i>Natural Subsoil</i>	Orange brown clay
<i>Significant Features</i>	None
<i>Other Features</i>	Furrow at 0 m to 12.8 m aligned NW-SE
<i>Finds</i>	None

## Appendix 2: Context Register

Context No.	Area	Description and Interpretation
701	T7	Linear cut with steep sides onto a flat base. Aligned NW-SE and measures 0.38 m wide by 0.17 m. Parallel to ditches [703], [705], [707] and [709]. <b>Probable prehistoric ditch</b>
702	T7	Mid greyish brown silty sand with frequent large stone inclusions. <b>Fill of ditch [701]</b>
703	T7	Linear cut with steep sides onto a flat base. Aligned NW-SE and measures 0.46 m wide by 0.19 m. Parallel to ditches [701], [705], [707] and [709]. <b>Probable prehistoric ditch</b>
704	T7	Mid greyish brown silty sand with frequent large stone inclusions. <b>Fill of ditch [703]</b>
705	T7	Linear cut aligned NW-SE intercutting ditch [709] to the SW. May also be present in T11 and T8. Measures 0.7 m by 0.08 m. <b>Ditch that may relate to prehistoric features or could be remnants of a furrow</b>
706	T7	Reddish brown silty sand with occasional stone. <b>Fill of ditch [705]</b>
707	T7	Curvilinear cut aligned NW-SE in T7. Also seen in T8 aligned E-W (See [807]) and in T9 aligned NE-SW (See [901]). Measures between 0.6 m and 0.8 m wide and over 0.4 m deep (not fully excavated). <b>Probable prehistoric enclosure ditch</b>
708	T7	Mid greyish brown and reddish brown sandy silt with regular very large stones throughout. <b>Fill of [707]</b>
709	T7	Linear cut aligned NW-SE intercutting ditch [705] to the NE. May also be present in T11 and T8. Measures 0.5 m by 0.07 m. <b>Ditch that may relate to prehistoric features or could be remnants of a furrow</b>
710	T7	Reddish brown silty sand with occasional stone. <b>Fill of ditch [709]</b>
801	T8	Linear cut aligned NW-SE measuring 0.9 m wide. Possibly same as or related to [705] and [709]. <b>Ditch that may relate to prehistoric features or could be remnants of a furrow</b>
802	T8	Reddish brown silty sand with occasional stone. <b>Fill of ditch [801]</b>
803	T8	Linear cut aligned NW-SE measuring 1.6 m wide. Possibly same as or related to [705] and [709]. <b>Ditch that may relate to prehistoric features or could be remnants of a furrow</b>
804	T8	Reddish brown silty sand with occasional stone. <b>Fill of ditch [803]</b>
805	T8	Linear cut aligned NE-SW to S of enclosure ditch [707]/[807]. Measures 0.32 m wide. <b>Possible prehistoric ditch</b>
806	T8	Reddish brown silty sand <b>Fill of ditch [805]</b>
807	T8	<b>See [707]</b>
808	T8	<b>See [708]</b>
809	T8	Curvilinear ditch aligned NE-SW before curving S where it terminates. Related to curvilinear [813]. Measures 3.3 m by 0.2 m. <b>Probable prehistoric ring groove</b>
810	T8	Reddish brown silty sand <b>Fill of ditch [809]</b>
811	T8	Linear cut aligned E-W situated between the terminals of [809] and [813]. Measures 0.4 m wide. <b>Possible prehistoric ditch</b>
812	T8	Reddish brown silty sand <b>Fill of ditch [811]</b>
813	T8	Curvilinear ct aligned SE to NW and curving N where it terminates. Related to curvilinear [809]. Measures 2.8 m by 0.2 m. <b>Probable prehistoric ring groove</b>
814	T8	Reddish brown silty sand <b>Fill of ditch [813]</b>
815	T8	Linear cut aligned E-W intercutting with pit [817]. Measures 0.35 m wide. <b>Possible prehistoric ditch</b>
816	T8	Reddish brown silty sand <b>Fill of ditch [815]</b>

**Weirston Road, Kilwinning, North Ayrshire**

817	T8	Sub-circular cut intercutting ditch [815] to the S and measuring 0.7 m diameter. <b>Possible prehistoric pit</b>
818	T8	Reddish brown silty sand <b>Fill of ditch [817]</b>
819	T8	Curvilinear cut aligned mainly NE-SW and possibly cut by [821] – not seen after this point. Measures 1.4 m by 0.32 m. <b>Probable prehistoric ditch</b>
820	T8	Greyish brown silty sand with frequent charcoal inclusions. <b>Fill of [819]</b>
821	T8	Linear cut aligned NW-SE and probably cutting ditch [819]. Measures 0.5 m wide. <b>Probable prehistoric ditch</b>
822	T8	Reddish brown silty sand <b>Fill of ditch [821]</b>
901	T9	<b>See [707]</b>
902	T9	<b>See [708]</b>
903	T9	Western edge of a curvilinear cut aligned NE-SW and curving S. Measures over 0.6 m wide. <b>Probable prehistoric feature</b>
904	T9	Reddish brown silty sand <b>Fill of ditch [903]</b>
1001	T10	Curvilinear cut intercutting ditch [1003] and pit or posthole [1005]. Aligned NW-SE, then curves E then NE. Measures approximately 11 m long by 0.3 m wide with an internal enclosed area of at least 8.7 m. <b>Probable prehistoric ring groove</b>
1002	T10	Reddish brown and greyish brown silty sand. <b>Fill of [1001]</b>
1003	T10	Linear cut aligned NW-SE intercutting ring groove [1001]. <b>Probable prehistoric ditch</b>
1004	T10	Reddish brown and greyish brown silty sand. <b>Fill of [1003]</b>
1005	T10	Sub-circular cut intercutting the internal edge of ring groove [1001]. Measures 0.6 m wide. <b>Probable prehistoric pit or posthole</b>
1006	T10	Reddish brown and greyish brown silty sand. <b>Fill of [1005]</b>
1007	T10	Linear cut aligned NE-SW measuring 0.25 m wide. <b>Probable prehistoric ditch</b>
1008	T10	Reddish brown and greyish brown silty sand. <b>Fill of [1007]</b>
1009	T10	Circular cut with steep sides onto a flat base. Measures 0.58 m diameter by 0.31 m. Related to posthole [1011] to the immediate NE. <b>Probable prehistoric posthole</b>
1010	T10	Greyish brown silty sand with one large stone in the NE half of the cut. <b>Fill of [1009]</b>
1011	T10	Circular cut measuring 0.4 m diameter to immediate NE of posthole [1009]. <b>Probable prehistoric posthole</b>
1012	T10	Greyish brown silty sand with large stones covering the majority of the top of the deposit. <b>Fill of [1011]</b>
1013	T10	Curvilinear cut aligned mainly N-S with shallow but steep sides onto a flat base. Measures 0.51 m by 0.04 m. <b>Possible prehistoric ditch or post medieval field boundary</b>
1014	T10	Reddish brown and greyish brown silty sand. <b>Fill of [1013]</b>
1015	T10	Linear cut aligned NE-SW and intercutting ditch [1017]. Measures 0.55 m wide. <b>Probable prehistoric ditch</b>
1016	T10	Reddish brown and greyish brown silty sand. <b>Fill of [1015]</b>
1017	T10	Linear cut aligned NW-SE intercutting ditch [1015]. Measures 0.7 m wide. <b>Possible prehistoric ditch or post medieval furrow</b>
1018	T10	Reddish brown and greyish brown silty sand. <b>Fill of [1017]</b>
1101	T11	Linear cut aligned NW-SE measuring 0.6 m wide. Adjacent to and parallel with ditches [1103] and [1105].

		<b>Possible prehistoric ditch or post medieval furrow</b>
1102	T11	Reddish brown silty sand. <b>Fill of [1101]</b>
1103	T11	Linear cut aligned NW-SE and measuring 0.7 m wide. Adjacent to and parallel with ditches [1101] and [1105]. <b>Possible prehistoric ditch or post medieval furrow</b>
1104	T11	Reddish brown silty sand. <b>Fill of [1103]</b>
1105	T11	Linear cut aligned NW-SE and measuring 0.4 m wide. Adjacent to and parallel with ditches [1101] and [1103]. Very ephemeral to the SW. <b>Possible prehistoric ditch or post medieval furrow</b>
1106	T11	Reddish brown silty sand. <b>Fill of [1105]</b>

### Appendix 3: Photographic Register

Frame	Description	From	Date
1-4	Pre-ex shots of development area	Var	21/3/17
5	Post-ex view of T1	SW	21/3/17
6	Post-ex view of T2	SW	21/3/17
7	Post-ex view of T3	S	21/3/17
8	Post-ex view of T4	S	21/3/17
9	Post-ex view of T5	S	21/3/17
10	Post-ex view of T6	S	21/3/17
11	Post-ex view of T7	S	21/3/17
12	SE facing section of ditch [701]	SE	21/3/17
13	View of ditch [701]	SE	21/3/17
14	SE facing section of ditch [703]	SE	21/3/17
15	View of ditch [703]	SE	21/3/17
16	General view of ditch [705]	NW	21/3/17
17	Post-ex view of T8	S	22/3/17
18	Post-ex view of T9	S	22/3/17
19	Post-ex view of T10	E	22/3/17
20	Post-ex view of T11	NE	22/3/17
21	Post-ex view of T12	SE	22/3/17
22	Post-ex view of T13	SE	22/3/17
23	General view of ditch [701]	SE	22/3/17
24	General view of ditch [703]	SE	22/3/17
25	General view of ditch [705]/[709]	SE	22/3/17
26	General view of ditch [707]	SE	22/3/17
27	General view of ditches [1101]-[1105]	NE	22/3/17
28-29	General view of ditches [1101]-[1105]	NW	22/3/17
30	General view of ditch [901]/[707]	NE	22/3/17
31-32	General view of ditch [903]	S	22/3/17
33	Intercutting ditches [1001] and [1003]	SE	22/3/17
34	Possible ring ditch [1001]	W	22/3/17
35	E end of ditch [1001] and p/hole [1005]	NE	22/3/17
36	E end of ditch [1001] and p/hole [1005]	NW	22/3/17
37	General view of ring ditch [1001]	E	22/3/17
38	Ditch [1007]	NE	22/3/17
39	NE facing section of p/hole [1009]	NE	22/3/17
40	General view of p/holes [1009] and [1011]	NW	22/3/17
41	General view of ditch [1013]	N	22/3/17
42	S facing section of ditch [1013]	S	22/3/17
43	Intercutting ditches [1015] and [1017]	E	22/3/17

44	General view of ditch [1015]	NE	22/3/17
45	General view of ditch [1017]	SE	22/3/17
46-47	General view of ditches [801] and [803]	NW	22/3/17
48	General view of ditch [805]	SW	22/3/17
49	General view of ditch [807]/[707]	W	22/3/17
50-51	Ring ditch [809] and [813] and ditch [811]	N/NW	22/3/17
52	General view of features [815]-[821]	N	22/3/17

#### Appendix 4: Drawing Register

Drawing No.	Details	Scale
1	Plan of Trench 7	1:50
2	SE-facing sections of [701] and [703]	1:10
3	Plan of Trench 11	1:50
4	Plan of Trench 9	1:50
5	Plan of Trench 10	1:50
6	NE-facing section of posthole [1009]	1:10
7	S-facing section of ditch [1013]	1:10
8	Plan of Trench 8	1:50

#### Appendix 5: Samples Register

Context No.	Quantity (litres)
702	10
1010	10
1014	10



**Appendix 6: 'Discovery and Excavation in Scotland' Report**

<b>LOCAL AUTHORITY:</b>	North Ayrshire Council
<b>PROJECT TITLE/SITE NAME:</b>	Weirston Road, Kilwinning
<b>PROJECT CODE:</b>	23756
<b>PARISH:</b>	Kilwinning
<b>NAME OF CONTRIBUTOR:</b>	Kevin Paton
<b>NAME OF ORGANISATION:</b>	AOC Archaeology Group
<b>TYPE(S) OF PROJECT:</b>	Evaluation
<b>NMRS NO(S):</b>	N/A
<b>SITE/MONUMENT TYPE(S):</b>	N/A
<b>SIGNIFICANT FINDS:</b>	None
<b>NGR (2 letters, 6 figures)</b>	NS 31375 43185
<b>START DATE (this season)</b>	21 <sup>st</sup> March 2017
<b>END DATE (this season)</b>	22 <sup>nd</sup> March 2017
<b>PREVIOUS WORK (inc DES)</b>	None
<b>MAIN (NARRATIVE) DESCRIPTION:</b> (May include information from other fields)	<p>An archaeological evaluation was undertaken by AOC Archaeology Group prior to a residential development on Weirston Road, Kilwinning, North Ayrshire.</p> <p>The evaluation consisted of 600 linear metres of trenching throughout the development area. The topsoil on site was a ploughed dark grey clay loam overlying orange and purplish grey clay in the majority of the site, with an orange gravel and clayey sand nearer the western edge.</p> <p>This sand and gravel subsoil was associated with a slightly raised area in the SW corner. Upon this rise, a number of potentially prehistoric features were revealed that are suggestive of a prehistoric settlement. The majority of the features were linear and curvilinear ditches that varied from wide and slightly curved stone filled ditches to narrower, curving ditches that could represent enclosures and possible structures respectively. A few pits or post hole features were also revealed that further indicate the presence of structures within the site.</p>
<b>PROPOSED FUTURE WORK:</b>	Yes
<b>CAPTION(S) FOR ILLUSTRATIONS:</b>	N/A
<b>SPONSOR OR FUNDING BODY:</b>	Mast Architects
<b>ADDRESS OF MAIN CONTRIBUTOR:</b>	AOC Archaeology Group Edgefield Road Industrial Estate Loanhead, Midlothian, EH20 9SY
<b>EMAIL ADDRESS:</b>	admin@aocarchaeology.com
<b>ARCHIVE LOCATION</b>	Archive to be deposited in NMRS



**AOC Archaeology Group**, Edgefield Industrial Estate, Edgefield Road, Loanhead EH20 9SY  
tel: 0131 440 3593 | fax: 0131 440 3422 | e-mail: [edinburgh@aocarchaeology.com](mailto:edinburgh@aocarchaeology.com)

[www.aocarchaeology.com](http://www.aocarchaeology.com)