

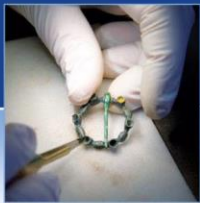
SGN Gasholder Heritage Review

Brielle Way, Isle of Sheppey

Historic Building Recording Report

AOC 23686

18th April, 2017



ARCHAEOLOGY

HERITAGE

CONSERVATION

SGN Gasholder Heritage Review: Brielle Way, Isle of Sheppey

Historic Building Recording Report

On Behalf of: Montagu Evans
Fourth Floor
Exchange Tower
19 Canning Street
Edinburgh
EH3 8EG

On behalf of:
SGN

National Grid Reference (NGR): TQ 90911 73800
TQ 90940 73828

AOC Project No: 23686

OASIS No: 282803

Prepared by: Diana Sproat
Andrej Celovsky

This document has been prepared in accordance with AOC standard operating procedures.

Author: Diana Sproat

Date: 17th April, 2017

Approved by: Graeme Cavers

Date: 17th April, 2017

Draft/Final Report Stage: Draft

Date: 18th April, 2017

Enquiries to: AOC Archaeology Group
Edgefield Industrial Estate
Edgefield Road
Loanhead
EH20 9SY

Tel. 0131 440 3593

Fax. 0131 440 3422

e-mail. admin@aocarchaeology.com

Contents

	Page
List of Figures.....	2
List of Plates.....	2
List of Appendices.....	2
<i>Summary</i>	1
1 INTRODUCTION	2
1.1 Project Background	2
1.2 Site Location	2
2 OBJECTIVES	2
3 METHODOLOGY	2
3.1 Introduction	2
3.2 Archive Research	2
3.3 Photographic record	2
3.4 Written record	3
4 RESULTS.....	3
4.1 Historical Background	3
4.2 Gasholder No 4	5
4.3 Gasholder No 5	5
4.4 Gasworks Buildings	6
5 CONCLUSIONS	6
6 REFERENCES	6
6.1 Bibliographical references	6
6.2 Cartographic references	7
APPENDIX 1: PHOTOGRAPHIC RECORD	8

List of Figures

Figure 1: Site location plan

Figure 2: Extract from Ordnance Survey map, 1869

Figure 3: Extract from Ordnance Survey map, 1898

Figure 4: Extract from Ordnance Survey map, 1909

Figure 5: Extract from Ordnance Survey map, 1934

List of Plates

Plate 1: Gasholder No 4, general view from the SSW

Plate 2: Gasholder No 4, general view from the NNE

Plate 3: Gasholder No 4, general view from the west

Plate 4: Gasholder No 4, general view showing the north side of the gasholder from the west

Plate 5: Gasholder No 4, general view from the NNW

Plate 6: Gasholder No 4, detail of steel plate construction from the north

Plate 7: Gasholder No 4, detail of steel plate from the north

Plate 8: Gasholder No 4, close detail of steel plate from the north

Plate 9: Gasholder No 4, detail of upper walkway from the south

Plate 10: Gasholder No 4, general view showing the stair from the south

Plate 11: Gasholder No 4, detail of the base of the stair from the south

Plate 12: Gasholder No 4, detail of electric motor and pump at the top of the stair from the south-east

Plate 13: Gasholder No 4, detail of electric motor and pump at the top of the stair from the south-west

Plate 14: Gasholder No 4, general view of the top of the gasholder from the south-west

Plate 15: Gasholder No 4, general view of the top of the gasholder from the east

Plate 16: Gasholder No 4, general view of the top of the gasholder from the south

Plate 17: Gasholder No 4, detail of the lift mechanism from the south

Plate 18: Gasholder No 4, detail of the lift mechanism from the SSW

Plate 19: Gasholder No 4, detail of the lift mechanism from the south-east

Plate 20: Gasholder No 5, general view from the east

Plate 21: Gasholder No 5, general view from the SSE

Plate 22: Gasholder No 5, detail of the steel construction and stanchions from the north

Plate 23: Gasholder No 5, detail of stanchion from the east

Plate 24: Gasholder No 5, detail of riveted panel from the east

Plate 25: Gasholder No 5, detail of pipes on the north-east side from the north-east

Plate 26: Gasholder No 5, detail of small compound for pipe on the north-east side from the north

Plate 27: Gasholder No 5, detail of pipe from the north-west

Plate 28: Gasholder No 5, detail of pipe from the north-west

Plate 29: Gasholder No 5, general view showing stair from the east

Plate 30: Gasholder No 5, detail of manufacturer's plaque from the east

Plate 31: Gasholder No 5, detail of electric motor and pump at the top of the stair from the NNE

Plate 32: Gasholder No 5, general view of the top of the gasholder from the north

Plate 33: Gasholder No 5, general view of the top of the gasholder from the south

Plate 34: Gasholder No 5, detail of the lift mechanism from the NNE

Plate 35: Gasholder No 5, detail of the lift mechanism from the west

Plate 36: Gasholder No 5, detail of the lift mechanism from the NNW

Plate 37: Gasholder No 5, detail of the lift mechanism from the south

Plate 38: Gasholder No 5, detail of the lift mechanism from the west

Plate 39: Detail of tank from the north-west

Plate 40: General view of gasworks building from the west

Plate 41: General view of gasworks building from the north-east

Plate 42: General view of gasworks building from the north-east

Plate 43: General view of gasworks building from the south-west

Plate 44: General view of gasworks building from the west

Plate 45: General view of the gasworks operations from the north-west

Plate 46: General view of the gasworks operations from the west

List of Appendices

Appendix 1: Photographic Register

Summary

AOC Archaeology Group was commissioned by Montagu Evans on behalf of SGN to undertake an historic buildings survey of two redundant gasholders at Brielle Way, Isle of Sheppey in Kent in advance of their decommissioning and demolition.

Gasholder No 4 to the north-east of the site was constructed in 1933, a spiral-guided gasholder with a capacity of 11,270m³. Gasholder No 5, to the immediate south-west, was constructed in 1958, another spiral-guided holder with a larger capacity of 27,864m³.

Both upper walkway around the top of gasholders was accessed during the survey, identifying a record to be made of the machinery and structures associated with the rise and fall of the gasholder tanks, including the roller carriages.

1 INTRODUCTION

1.1 Project Background

1.1.1 AOC Archaeology Group was commissioned by Montagu Evans on behalf of SGN to undertake a survey of three redundant gasholders at Sea Street in Herne Bay and Brielle Way, Isle of Sheppey, both in Kent. The work has been undertaken in advance of a wider programme involving the decommissioning and dismantling of the remaining redundant gasholders in the UK operated by SGN. This report concerns the two gasholders at Brielle Way, Isle of Sheppey.

1.2 Site Location

1.2.1 The two gasholders at Brielle Way, Isle of Sheppey are located at NGR: 90940 73828 (Gasholder No 4) and NGR: TR 90911 7380 (Gasholder No 5) (Figure 1). They are bounded to the east by Brielle Way, the A249, the west by the Sheerness Docks, to the south by the Medway Sewage Pumping Station and to the north by a logistics depot.

2 OBJECTIVES

2.1 The objective of the historic building survey was to create a 'preservation by record' of the redundant gasholders immediately prior to their decommissioning through archive research, written and photographic survey.

3 METHODOLOGY

3.1 Introduction

3.1.1 The work was undertaken to a brief provided by Montagu Evans (2017) and included an archive research for early or original plans and elevations of the gasholders and an on-site written and photographic record.

3.2 Archive Research

3.2.1 A general map-regression exercise was undertaken on the site to determine the general history and development of the gasholders and their related gasworks. All publicly accessible pre-Ordnance Survey maps and Ordnance Survey maps were viewed, and a selection have been included in this report.

3.2.2 The following archives were consulted to identify early/original archives and drawings of the site/gasholders:

- Kentish Archives, Maidstone
 - no records (drawn or photographic) of the gasholder were known to exist in these archives
- The National Archives at Kew
 - no records (drawn or photographic) of the gasholder were known to exist in these archives
- National Gas Archive, Warrington
- National Monuments Record, Swindon
 - no records (drawn or photographic) of the gasholder were known to exist in these archives

3.2.3 In addition, English Heritage surveys of the Gasholders of London, produced in 2000 and 2002, have been consulted to identify any results of previous results of investigations of the site. These have been included in the references section of the report in Section 6 below.

3.3 Photographic record

3.3.1 A general exterior photographic survey was undertaken of the structures in colour digital using a digital SLR camera. Photographs were taken of the gasholders and the two ancillary buildings associated with the former

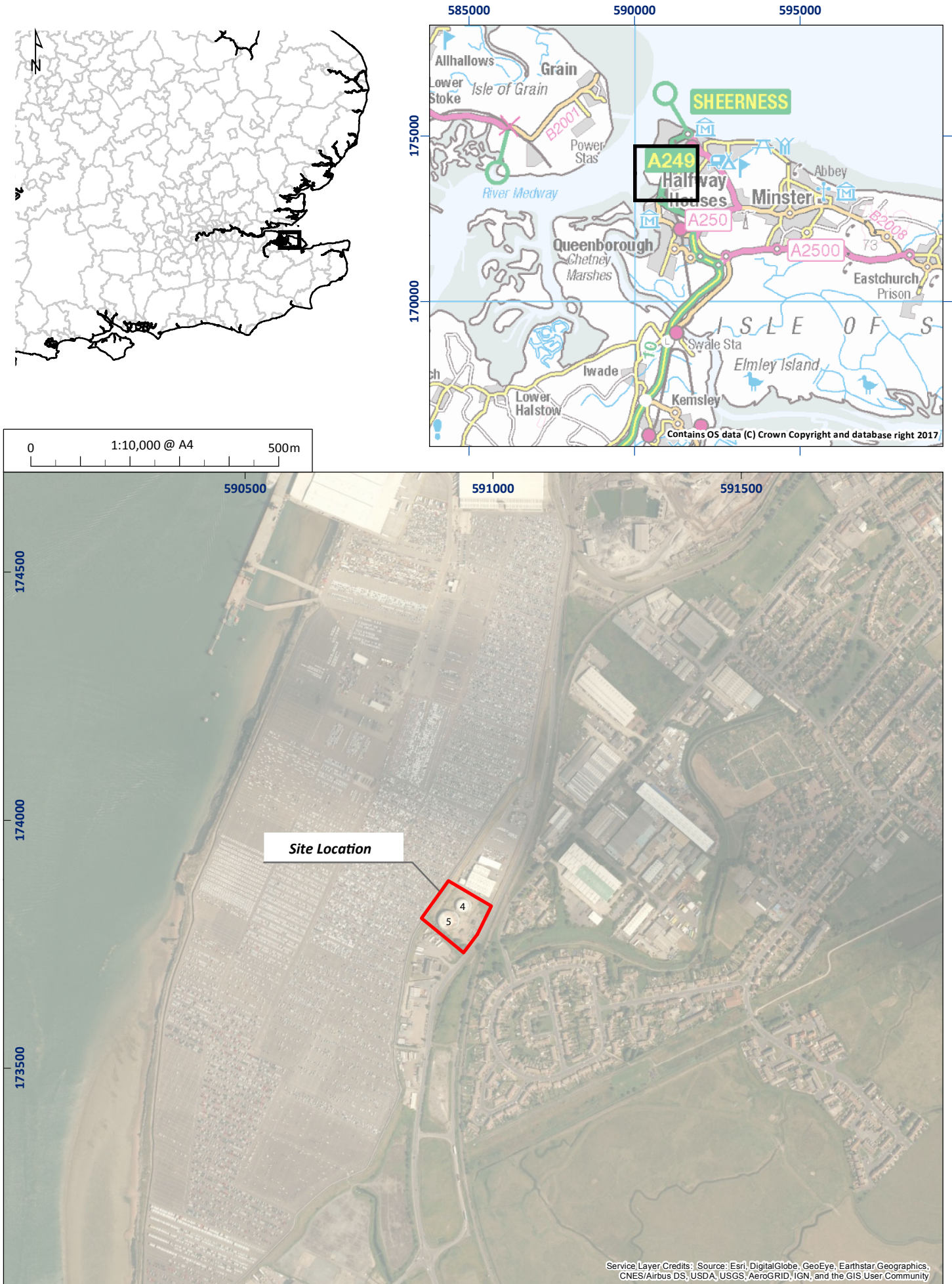


Figure 1: Site location plan

01/23686/REP/01/01

gasworks. In addition to general shots of the structures, detail shots of features such as structural elements, pipework, stairs, etc were also taken. A discreetly placed 2m ranging pole was placed in all shots where access and health and safety allowed for scale. A register of photographs was taken on site and can be found in Appendix 1, and a selection of digital photographs has been used as plates to illustrate this report.

3.4 Written record

- 3.4.1 A written survey was undertaken of the exterior of the gasholders using AOC *pro forma* recording sheets with comment on condition, construction, features, fixtures and fittings, modern interventions, evidence for phasing and function and anything else pertinent to the historic record.

4 RESULTS

4.1 Historical Background

- 4.1.1 The Sheppey Gasworks, adjacent to the River Medway, was established in the 19th century and the mid-late 19th century and 20th century historic mapping identifies the development of the five gasholders on the site (Figures 2 – 7). The 1869 map (Figure 2) shows two gasholders (Gasholders 1 and 2) with ancillary gasworks buildings to the south-west and west side. There is a row of cottages to the south and a railway to the east. By the 1898 map (Figure 3), the gasworks has expanded to the north and a new larger gasholder has been constructed, Gasholder No 3. This remained the layout of the site into the early 20th century as can be seen on the later maps, although by the 1930s the site did expand to the south. The later gasholders on the site were constructed to the north of the original gasworks, in the 1933 and 1958 respectively.



Figure 2: Extract from Ordnance Survey map, 1869



Figure 3: Extract from Ordnance Survey map, 1898



Figure 4: Extract from Ordnance Survey map, 1909



Figure 5: Extract from Ordnance Survey map, 1934
(the presence of Gasholder No 4 has not been updated on this map)

4.2 Gasholder No 4

4.2.1 Gasholder No 4 is the smaller of the two gasholders constructed of riveted steel sheets with additional riveted small panels holding the sheets in place (Plates 1 - 8). There is a single vertical gas pipe from the ground on the north-west side. It is a relatively plain construction with the upper walkway supported by plain steel brackets bolted to the top of the gasholder (Plate 9). The upper walkway is accessed via a stair on the south-east side set in two stages with a small landing between (Plates 10 & 11). The base of the stair was enclosed by a small chicken wire and barbed wire compound with concrete posts, although it was possible to access the upper walkway at the time of survey. An electric motor and pump is located at the top of the stair just below the walkway (Plates 12 & 13), which is flanked by a steel safety rail. The lifts were still *in situ* for the gasholder to rise, together with the mechanisms to lock and operate them, including the roller carriage which guides the upwards or downwards movement of the gasholder (Plates 14 - 19).

4.3 Gasholder No 5

4.3.1 Gasholder No 5 is a larger gasholder constructed of riveted steel plates with additional rectangular steel riveted plates and vertical stanchions supporting the upper walkway (Plates 20 - 24). There is more pipework associated with this gasholder, with a large double pipe on the north-east side (Plates 25 - 28). The upper walkway is accessed via a stair on the east side, and, as with Gasholder No 4, has a small landing in the centre supported by a steel-framed stanchion (Plate 29). On the west side of the gasholder there is a manufacturer's

plaque identifying the date of construction as 1958 and the company name Robert Dempster & Sons from Ellan in Yorkshire (Plate 30).

- 4.3.2 The upper walkway to this gasholder was also accessed during the survey providing an opportunity to see the workings of the lift operations. As with Gasholder No 4, the electric pump and motor is located just below the walkway at the top of the stair (Plate 31). The walkway is then framed by steel safety rails with the machinery and features for the operation of the spiral-guided lifts still *in situ*, including (as with Gasholder No 4) the roller carriage which guides the upwards or downwards movement of the gasholder (Plates 32 – 38).

4.4 Gasworks Buildings

- 4.4.1 All the gasworks buildings were relatively modern in date and consisted of a number of flat roofed concrete and brick structures and a tank set in a concrete compound largely located to the south-east of the site (Plates 39 - 44). The large pipework associated with the input/output of the gas supply is also located to the south-east side (Plates 45 & 46).

5 CONCLUSIONS

- 5.1 Both structures are three-lift gasholders which was a design invented by W Gadd, the first example built in 1888 (Thomas 2010). It is a typical example of gasholders of the region and period. Access to the tops of both gasholders identified the original machinery and structures associated with the operation of the rising lifts, including the spiral-guided rails which would have been fixed to the side of the tank.
- 5.3 Most gasholders today are the only remnants of former gasworks, and many were constantly being upgraded, enlarged and rebuilt throughout the late 19th and early years of the 20th century. The 1930s - 1950s appears to have been a boom time for the renewal of many gasholder projects, with technology allowing larger and more complex systems to be put in place to store the gas supply.

6 REFERENCES

6.1 Bibliographical references

English Heritage 2000a *London Gasholders Survey. The Development of the Gasholder in London in the Later 19th Century, Part A: General.*

English Heritage 2000b *London Gasholders Survey. The Development of the Gasholder in London in the Later 19th Century, Part B: Individual Sites.*

English Heritage 2002 *Gasholders Step 3 Report for Monuments Protection Programme.*

Hills, M 2017 'Herne Bay Gas', in *Herne Bay Historical Records Society, Quarterly Newsletter*, Winter 2017, p 2

Montagu Evans 2017 *SGN: (0549) Sea Street, Herne Bay & (0520) Brielle Way, Isle of Sheppey Historic Building Recording Brief.*

Thomas, R 2010 'Gasholders and their tanks; a profile of the different types of gasholders, their tanks and their occurrence on former gasworks sites', <http://www.eugris.info/newsdownloads/Gasholders%20and%20their%20tanks%20-%20Reading%20on%20screen.pdf>, Accessed 17th April 2017

6.2 Cartographic references

1876 Ordnance Survey *Kent Sheet XXIII*

1908 Ordnance Survey *Kent Sheet XXIII.SE*

1935 Ordnance Survey *Kent Sheet XXIII.SE*

1946 Ordnance Survey *Kent Sheet XXIII.SE*



Plate 1: Gasholder No 4, general view from the SSW



Plate 2: Gasholder No 4, general view from the NNE



Plate 3: Gasholder No 4, general view from the west



Plate 4: Gasholder No 4, general view showing the north side of the gasholder from the west



Plate 5: Gasholder No 4, general view from the NNW



Plate 6: Gasholder No 4, detail of steel plate construction from the north



Plate 7: Gasholder No 4, detail of steel plate from the north



Plate 8: Gasholder No 4, close detail of steel plate from the north



Plate 9: Gasholder No 4, detail of upper walkway from the south



Plate 10: Gasholder No 4, general view showing the stair from the south



Plate 11: Gasholder No 4, detail of the base of the stair from the south



Plate 12: Gasholder No 4, detail of electric motor and pump at the top of the stair from the south-east



Plate 13: Gasholder No 4, detail of electric motor and pump at the top of the stair from the south-west



Plate 14: Gasholder No 4, general view of the top of the gasholder from the south-west



Plate 15: Gasholder No 4, general view of the top of the gasholder from the east



Plate 16: Gasholder No 4, general view of the top of the gasholder from the south



Plate 17: Gasholder No 4, detail of the lift mechanism from the south



Plate 18: Gasholder No 4, detail of the lift mechanism from the SSW



Plate 19: Gasholder No 4, detail of the lift mechanism from the south-east



Plate 20: Gasholder No 5, general view from the east



Plate 21: Gasholder No 5, general view from the SSE



Plate 22: Gasholder No 5, detail of the steel construction and stanchions from the north



Plate 23: Gasholder No 5, detail of stanchion from the east

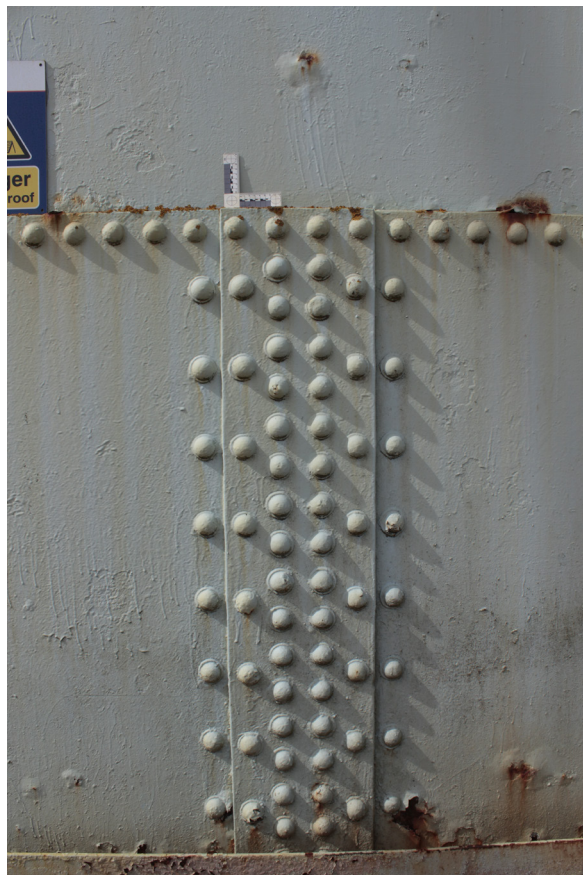


Plate 24: Gasholder No 5, detail of riveted panel from the east



Plate 25: Gasholder No 5, detail of pipes on the north-east side from the north-east



Plate 26: Gasholder No 5, detail of small compound for pipe on the north-east side from the north



Plate 27: Gasholder No 5, detail of pipe from the north-west



Plate 28: Gasholder No 5, detail of pipe from the north-west



Plate 29: Gasholder No 5, general view showing stair from the east



Plate 30: Gasholder No 5, detail of manufacturer's plaque from the east



Plate 31: Gasholder No 5, detail of electric motor and pump at the top of the stair from the NNE



Plate 32: Gasholder No 5, general view of the top of the gasholder from the north



Plate 33: Gasholder No 5, general view of the top of the gasholder from the south



Plate 34: Gasholder No 5, detail of the lift mechanism from the NNE



Plate 35: Gasholder No 5, detail of the lift mechanism from the west



Plate 36: Gasholder No 5, detail of the lift mechanism from the NNW



Plate 37: Gasholder No 5, detail of the lift mechanism from the south



Plate 38: Gasholder No 5, detail of the lift mechanism from the west



Plate 39: Detail of tank from the north-west



Plate 40: General view of gasworks building from the west



Plate 41: General view of gasworks building from the north-east



Plate 42: General view of gasworks building from the north-east



Plate 43: General view of gasworks building from the south-west



Plate 44: General view of gasworks building from the west



Plate 45: General view of the gasworks operations from the north-west



Plate 46: General view of the gasworks operations from the west

APPENDIX 1: PHOTOGRAPHIC RECORD

Colour Digital

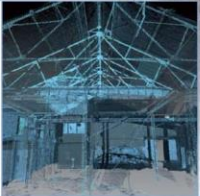
Frame	Description	Taken From	Date
8068	General view of single-storey gasworks building	W	30/03/2017
8069	General view of single-storey gasworks building	W	30/03/2017
8070	General view of single-storey gasworks building	SE	30/03/2017
8071	General view of single-storey gasworks building	SE	30/03/2017
8072	General view of single-storey gasworks building	NE	30/03/2017
8073	General view of single-storey gasworks building	NE	30/03/2017
8074	General view of single-storey gasworks building	N	30/03/2017
8075	General view of single-storey gasworks building	N	30/03/2017
8076	General view of Gasholder No 5	E	30/03/2017
8077	General view of Gasholder No 5	E	30/03/2017
8078	General view of Gasholder No 5	E	30/03/2017
8079	General view of Gasholder No 5	E	30/03/2017
8080	Detail of stanchion, Gasholder No 5	E	30/03/2017
8081	Detail of manufacturers' plaque, Gasholder No 5	E	30/03/2017
8082	Detail of riveted panel, Gasholder No 5	E	30/03/2017
8083	General view of pipes, Gasholder No 5	SE	30/03/2017
8084	Detail of pipes, Gasholder No 5	SE	30/03/2017
8085	Detail of pipework, Gasholder No 5	NE	30/03/2017
8086	Detail of pipework, Gasholder No 5	NE	30/03/2017
8087	Detail of pipework, Gasholder No 5	NE	30/03/2017
8088	Detail of pipework, Gasholder No 5	SE	30/03/2017
8089	Detail of pipework, Gasholder No 5	SE	30/03/2017
8090	Detail of panels, Gasholder No 5	SE	30/03/2017
8091	General view, Gasholder No 5	SSE	30/03/2017
8092	General view, Gasholder No 5	SSE	30/03/2017
8093	Detail of inset panel, Gasholder No 5	SE	30/03/2017
8094	Detail of inset panel, Gasholder No 5	SE	30/03/2017
8095	Detail of upper walkway, Gasholder No 5	SE	30/03/2017
8096	General view, Gasholder No 5	SSE	30/03/2017
8097	General view, Gasholder No 5	SSE	30/03/2017
8098	General view, Gasholder No 5	SW	30/03/2017
8099	General view, Gasholder No 5	SW	30/03/2017
8100	General view, Gasholder No 5	NW	30/03/2017
8101	General view, Gasholder No 5	NW	30/03/2017
8102	Detail of small junction box	SE	30/03/2017
8103	General view, Gasholder No 5	N	30/03/2017
8104	General view, Gasholder No 5	N	30/03/2017
8105	Detail of stanchions, Gasholder No 5	N	30/03/2017
8106	Detail of stanchions, Gasholder No 5	N	30/03/2017
8107	Detail of stanchions, Gasholder No 5	N	30/03/2017
8108	Detail of pipework, Gasholder No 5	NE	30/03/2017
8109	Detail of pipework, Gasholder No 5	NE	30/03/2017
8110	Detail of pipework, Gasholder No 5	NW	30/03/2017
8111	Detail of pipework, Gasholder No 5	NW	30/03/2017

8112	Detail of pipework, Gasholder No 5	N	30/03/2017
8113	Detail of pipework, Gasholder No 5	NE	30/03/2017
8114	Detail of pipework, Gasholder No 5	N	30/03/2017
8115	Detail of pipework, Gasholder No 5	W	30/03/2017
8116	Detail of pipework, Gasholder No 5	E	30/03/2017
8117	Detail of stair, Gasholder No 5	N	30/03/2017
8118	Detail of stair, Gasholder No 5	N	30/03/2017
8119	Detail of stair, Gasholder No 5	N	30/03/2017
8120	Detail of stair, Gasholder No 5	NNE	30/03/2017
8121	Detail on upper walkway, Gasholder No 5	S	30/03/2017
8122	Detail on upper walkway, Gasholder No 5	NNE	30/03/2017
8123	Detail on upper walkway, Gasholder No 5	S	30/03/2017
8124	Detail on upper walkway, Gasholder No 5	W	30/03/2017
8125	Detail on upper walkway, Gasholder No 5	NNW	30/03/2017
8126	Detail on upper walkway, Gasholder No 5	NNW	30/03/2017
8128	Detail on upper walkway, Gasholder No 5	N	30/03/2017
8128	Detail on upper walkway, Gasholder No 5	W	30/03/2017
8129	Detail of fittings for the lifts, Gasholder No 5	S	30/03/2017
8130	Detail of fittings for the lifts, Gasholder No 5	W	30/03/2017
8131	Detail of feature on upper walkway, Gasholder No 5	SEE	30/03/2017
8132	Detail of feature on upper walkway, Gasholder No 5	SEE	30/03/2017
8133	Detail on upper walkway, Gasholder No 5	E	30/03/2017
8134	Looking down from walkway to the pipework and gasworks building from the upper walkway of Gasholder No 5	NW	30/03/2017
8135	Looking down at the pipework and gasworks building from the upper walkway of Gasholder No 5	NNW	30/03/2017
8136	Unassigned	-	-
8137	Unassigned	-	-
8138	Detail on upper walkway, Gasholder No 5	SSW	30/03/2017
8139	Detail on upper walkway, Gasholder No 5	S	30/03/2017
8140	General view of Gasholder No 4 from walkway of Gasholder No 5	SSW	30/03/2017
8141	Looking down at gasworks building from the upper walkway of Gasholder No 5	W	30/03/2017
8142	Detail of hatch in ground in front of Gasholder No 4	NW	30/03/2017
8143	Detail of hatch in ground in front of Gasholder No 4	W	30/03/2017
8144	General view, Gasholder No 4	W	30/03/2017
8145	General view, Gasholder No 4	W	30/03/2017
8146	General view, Gasholder No 4	NNW	30/03/2017
8147	General view, Gasholder No 4	W	30/03/2017
8148	Detail of hatch in ground in front of Gasholder No 4	NW	30/03/2017
8149	Detail of riveted panels, Gasholder No 4	N	30/03/2017
8150	Close detail of riveted panels, Gasholder No 4	N	30/03/2017
8151	General view of 'transformer rectifier' building	SW	30/03/2017
8152	General view of 'transformer rectifier' building	SW	30/03/2017
8153	General view of 'transformer rectifier' building	W	30/03/2017
8154	Close detail of riveted panels, Gasholder No 4	SSE	30/03/2017
8155	Close detail of riveted panels, Gasholder No 4	SE	30/03/2017
8156	Close detail of riveted panels, Gasholder No 4	SSW	30/03/2017
8157	Close detail of riveted panels, Gasholder No 4	SSW	30/03/2017
8158	Close detail of riveted panels, Gasholder No 4	SSW	30/03/2017
8159	Close detail of riveted panels, Gasholder No 4	SE	30/03/2017

8160	Close detail of riveted panels, Gasholder No 4	SE	30/03/2017
8161	Close detail of riveted panels, Gasholder No 4	SE	30/03/2017
8162	General view, Gasholder No 4	S	30/03/2017
8163	General view, Gasholder No 4	S	30/03/2017
8164	General view, Gasholder No 4	NNE	30/03/2017
8165	General view, Gasholder No 4	NNE	30/03/2017
8166	General view, Gasholder No 4	NNE	30/03/2017
8167	General view, Gasholder No 4	NNE	30/03/2017
8168	Detail of stair, Gasholder No 4	NE	30/03/2017
8169	Detail of stair, Gasholder No 4	SSE	30/03/2017
8170	Detail of stair, Gasholder No 4	SSE	30/03/2017
8171	Detail of stair, Gasholder No 4	S	30/03/2017
8172	Detail of stair, Gasholder No 4	S	30/03/2017
8173	Detail of stair, Gasholder No 4	S	30/03/2017
8174	General view, Gasholder No 4	S	30/03/2017
8175	General view, Gasholder No 4	SW	30/03/2017
8176	Detail of upper walkway, Gasholder No 4	S	30/03/2017
8177	Detail of upper walkway, Gasholder No 4	S	30/03/2017
8178	Detail of enclosed box, Gasholder No 4	S	30/03/2017
8179	Detail of enclosed box, Gasholder No 4	S	30/03/2017
8180	Detail of enclosed box, Gasholder No 4	SW	30/03/2017
8181	Detail of motor on the side of Gasholder No 4 at the stair	SE	30/03/2017
8182	Detail of motor on the side of Gasholder No 4 at the stair	S	30/03/2017
8183	Detail of motor on the side of Gasholder No 4 at the stair	S	30/03/2017
8184	General view of lifts from the upper walkway of Gasholder No 4	SW	30/03/2017
8185	General view of lifts from the upper walkway of Gasholder No 4	E	30/03/2017
8186	Detail of features on upper walkway of Gasholder No 4	SE	30/03/2017
8187	Detail of features on upper walkway of Gasholder No 4	SE	30/03/2017
8188	Detail of features on upper walkway of Gasholder No 4	S	30/03/2017
8189	Detail of features on upper walkway of Gasholder No 4	SE	30/03/2017
8190	Detail of features on upper walkway of Gasholder No 4	SE	30/03/2017
8191	Detail of features on upper walkway of Gasholder No 4	SE	30/03/2017
8192	Detail of features on upper walkway of Gasholder No 4	SSW	30/03/2017
8193	General view from upper walkway of Gasholder No 4	S	30/03/2017
8194	General view of gasworks building	NE	30/03/2017
8195	General view of gasworks building	NE	30/03/2017
8196	General view of gasworks building	NW	30/03/2017
8197	General view of gasworks building	NW	30/03/2017
8198	General view of gasworks building	SW	30/03/2017
8199	General view of gasworks building	SW	30/03/2017
8200	General view of gasworks building	SE	30/03/2017
8201	General view of gasworks building	SE	30/03/2017
8202	General view of gasworks building	SSE	30/03/2017
8203	General view, Gasholder No 4	S	30/03/2017
8204	General view of operations and pipework to the SE of the site	W	30/03/2017
8205	General view of operations and pipework to the SE of the site	W	30/03/2017
8206	General view of operations and pipework to the SE of the site	W	30/03/2017
8207	General view of operations and pipework to the SE of the site	N	30/03/2017
8208	General view of operations and pipework to the SE of the site	N	30/03/2017
8209	General view of operations and pipework to the SE of the site	S	30/03/2017
8210	General view of operations and pipework to the SE of the site	S	30/03/2017

8211	General view of operations and pipework to the SE of the site	E	30/03/2017
8212	General view of operations and pipework to the SE of the site	E	30/03/2017
8213	General view of operations and pipework to the SE of the site	SE	30/03/2017
8214	Detail of diesel motor	NE	30/03/2017
8215	Detail of diesel motor	NE	30/03/2017
8216	Detail of diesel motor	NE	30/03/2017
8217	Detail of diesel motor	NE	30/03/2017
8218	Detail of diesel motor	NE	30/03/2017
8219	Detail of diesel motor	NE	30/03/2017
8220	Detail of diesel motor	NW	30/03/2017
8221	Detail of diesel motor	NW	30/03/2017
8222	Detail of diesel motor	NWW	30/03/2017
8223	Detail of diesel motor	NWW	30/03/2017
8224	Detail of diesel motor	NW	30/03/2017
8225	Detail of diesel motor	S	30/03/2017
8226	Detail of diesel motor	-	30/03/2017
8227	Detail of diesel motor	-	30/03/2017
8228	Detail of diesel motor	E	30/03/2017
8229	Detail of diesel motor	SEE	30/03/2017
8230	Detail of diesel motor	NE	30/03/2017
8231	Detail of diesel motor	NE	30/03/2017
8232	Detail of diesel motor	NE	30/03/2017
8233	Detail of diesel motor	SSW	30/03/2017
8234	Detail of diesel motor	SW	30/03/2017
8235	Detail of diesel motor	W	30/03/2017
8236	Detail of diesel motor	W	30/03/2017
8237	Detail of diesel motor	NNE	30/03/2017
8238	General view of small gasworks building	N	30/03/2017
8239	General view of small gasworks building	NE	30/03/2017
8240	General view of small gasworks building	SSW	30/03/2017
8241	General view of small gasworks building	SSW	30/03/2017
8242	General view of small gasworks building	SSW	30/03/2017
8243	General view of small gasworks building	SW	30/03/2017
8244	General view of small gasworks building	NW	30/03/2017
8245	General view of small gasworks building	NW	30/03/2017
8246	General view of small gasworks building	NW	30/03/2017
8247	General view of small gasworks building	NW	30/03/2017
8248	General view of small gasworks building	N	30/03/2017
8249	General view of small gasworks building	NNE	30/03/2017
8250	General view of small gasworks building	N	30/03/2017
8251	General view of small gasworks building	SSW	30/03/2017
8252	General view of isolator tank	SW	30/03/2017
8253	General view of isolator tank	SW	30/03/2017
8254	General view of isolator tank	SW	30/03/2017
8255	General view of isolator tank	SE	30/03/2017
8256	General view of isolator tank	SE	30/03/2017
8257	General view of isolator tank	S	30/03/2017
8258	General view of isolator tank	NW	30/03/2017
8259	Detail of hatches to the SE of the site	SW	30/03/2017
8260	Detail of hatches to the SE of the site	SE	30/03/2017
8261	Detail of small boxes to the SE of the site	SE	30/03/2017

8262	Detail of small boxes to the SE of the site	NW	30/03/2017
8263	Detail of hatches to the SE of the site	SW	30/03/2017
8264	Detail of hatches to the SE of the site	SE	30/03/2017
8265	Detail of hatches to the SE of the site	SE	30/03/2017
8266	Detail of hatches to the SE of the site	SE	30/03/2017
8267	Detail of hatches to the SE of the site	SW	30/03/2017
8268	Detail of hatches to the SE of the site	SW	30/03/2017
8269	General view of concrete wall	SE	30/03/2017
8270	General view of concrete wall	NW	30/03/2017
8271	General view of concrete wall	NW	30/03/2017
8272	General view of brick enclosure	SW	30/03/2017
8273	General view of brick enclosure	W	30/03/2017
8274	General view of brick enclosure	SW	30/03/2017
8275	General view of brick enclosure	W	30/03/2017



AOC Archaeology Group, Edgefield Industrial Estate, Edgefield Road, Loanhead EH20 9SY
tel: 0131 440 3593 | fax: 0131 440 3422 | e-mail: edinburgh@aacarchaeology.com

www.aocarchaeology.com