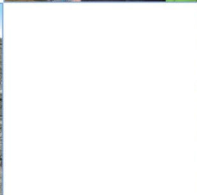
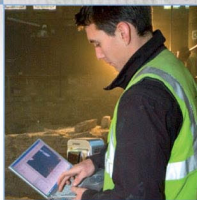
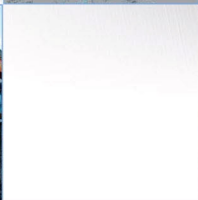
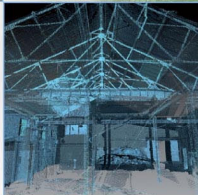
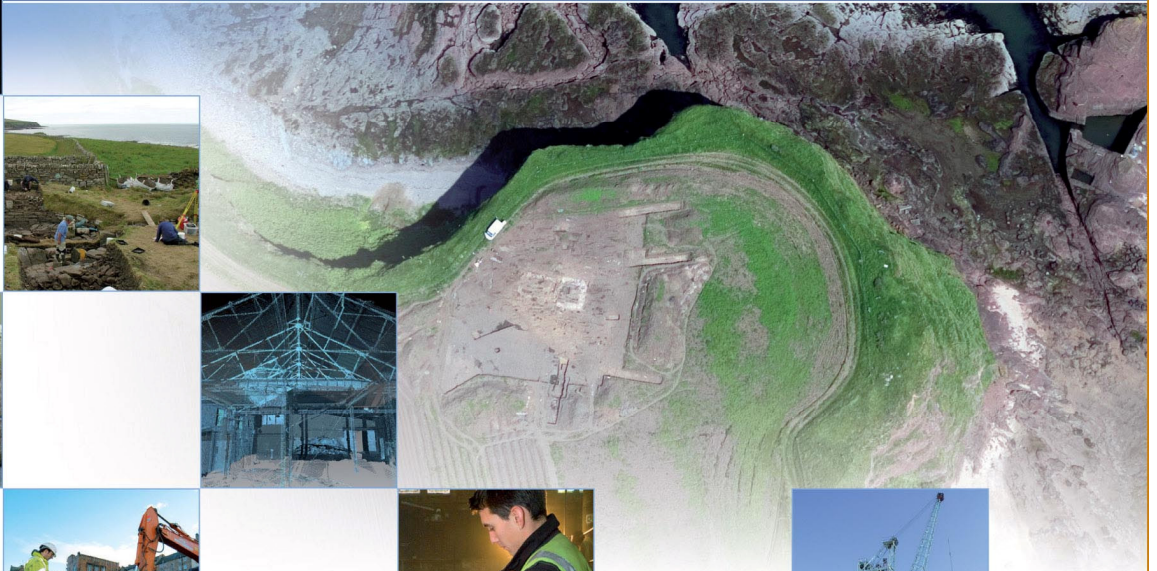
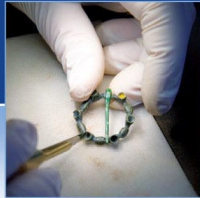


# 63 Ladywell Road, Corstorphine, Edinburgh: Archaeological Evaluation Report

AOC Project 23691

06<sup>th</sup> July 2017



ARCHAEOLOGY

HERITAGE

CONSERVATION

## 63 Ladywell Road, Corstorphine, Edinburgh: Archaeological Evaluation Report

<b>On Behalf of:</b>	New Age Developers 2 <sup>nd</sup> Floor North Saltire Court 20 Castle Terrace Edinburgh EH1 2EN
<b>National Grid Reference (NGR):</b>	NT 19904 72185
<b>AOC Project No:</b>	23691
<b>Planning Ref:</b>	15/05493/PPP
<b>OASIS No:</b>	1-289533
<b>Prepared by:</b>	Rob Engl
<b>Illustration by:</b>	Sam O'Leary
<b>Date of Fieldwork:</b>	06 <sup>th</sup> July 2017
<b>Date of Report:</b>	07 <sup>th</sup> July 2017

This document has been prepared in accordance with AOC standard operating procedures.

**Author:** Rob Engl

**Date:** 07<sup>th</sup> July 2017

**Approved by:** Martin Cook

**Date:** 07<sup>th</sup> July 2017

**Draft/Final Report Stage:** Draft

**Date:** 07<sup>th</sup> July 2017

**Enquiries to:**

AOC Archaeology Group  
Edgefield Industrial Estate  
Edgefield Road  
Loanhead  
EH20 9SY

Tel. 0131 440 3593

Fax. 0131 440 3422

e-mail. [admin@aocarchaeology.com](mailto:admin@aocarchaeology.com)



## Contents

	Page
List of Figures .....	1
List of Plates .....	1
List of Appendices .....	1
Summary .....	2
<b>1 INTRODUCTION .....</b>	<b>3</b>
1.1 Site Background .....	3
1.2 Site Location.....	3
1.3 Archaeological background .....	3
<b>2 OBJECTIVES .....</b>	<b>3</b>
<b>3 METHODOLOGY.....</b>	<b>3</b>
<b>4 RESULTS.....</b>	<b>4</b>
<b>5 CONCLUSIONS &amp; RECOMMENDATIONS .....</b>	<b>5</b>
<b>6 REFERENCES .....</b>	<b>5</b>
<b>APPENDIX 1: Trench Descriptions .....</b>	<b>8</b>
<b>APPENDIX 2: Photographic Record .....</b>	<b>8</b>
<b>Camera 1 .....</b>	<b>8</b>
<b>APPENDIX 3: 'Discovery and Excavation in Scotland' Report.....</b>	<b>9</b>

## List of Figures

Figure 1: Site Location plan

Figure 2: Site plan showing location of evaluation trenches

## List of Plates

Plate 1: South facing section of Trench 1

Plate 2: General view of site from north

Plate 3: Trench 3 south-west facing section

## List of Appendices

Appendix 1: Trench Descriptions

Appendix 2: Photographic Record

Appendix 3: '*Discovery and Excavation in Scotland*' Report

## Summary

---

*This report presents the results of a programme of archaeological evaluation undertaken by AOC Archaeology Group on behalf of New Age Developers ahead of the development of a land parcel at 63 Ladywell Avenue, Corstorphine, Edinburgh. The development area totalled 0.16 ha and consisted of garden, open areas of hard-standing and upstanding buildings.*

*The archaeological evaluation was to consist of the machine trenching of 160m<sup>2</sup> (80 linear metres). However, the presence of extensive live services restricted the evaluation to 50 linear metres.*

*No significant archaeological features or material were recorded during the evaluation. It was apparent that the open area of the forecourt had been previously truncated. This had removed the in situ deposits to natural subsoil. A mix of made ground and hard standing was then imported in order to increase the ground level.*

## 1 INTRODUCTION

### 1.1 Site Background

- 1.1.1 AOC Archaeology Group was commissioned by New Age Developers to carry out a programme of archaeological evaluation ahead of a residential development on land at 63 Ladywell Avenue, Corstorphine, Edinburgh (Planning Ref: 15/05493/PPP).
- 1.1.2 The proposed development lies within the administrative area of the City of Edinburgh Council, which is advised on archaeological matters by Mr John Lawson of the City of Edinburgh Council Archaeology Service (CECAS). The archaeological works were conducted in accordance with the principals set out in *Scottish Planning Policy* (2014) and *Planning & Archaeology* (2011) and in accordance with City of Edinburgh Council requirements as advised by CECAS.
- 1.1.3 The objective of the archaeological works was to determine the existence of any buried archaeological remains within the development area by means of a programme of trial trenching. A Written Scheme of Investigation (AOC 2017) outlining the entire programme of archaeological works was agreed with CECAS in advance of the evaluation being undertaken.
- 1.1.4 No significant archaeological remains or features were observed during the evaluation.

### 1.2 Site Location

- 1.2.1 The proposed development area is situated on the eastern side of Ladywell Avenue, Corstorphine, City of Edinburgh. The site is currently occupied by a dwelling and industrial buildings. The site is ca 0.16 ha in size and is bounded by garages to the south and residential gardens on all remaining boundaries. The site is centred on NGR NT 19904 72185 and is 44.2 m OD.

### 1.3 Archaeological background

- 1.3.1 Historically the site is situated on the edge of the former Corstorphine Loch, in open ground to the South of Corstorphine Castle built on its eastern shore. The Loch dates to the end of the last Ice Age (c.12000BC), and at its peak is thought to have stretched as far west as Gogar/South Gyle. By the late medieval period the loch had been largely drained forming marshy ground. The importance of the Loch to prehistoric societies is demonstrated by the occurrence of burials within the immediate locale. These occurred predominantly in short cists discovered by chance in positions corresponding to dry ground along the former edge of the Loch. One cist was discovered in 1970 to NE of the site at the corner of Roull Road and Broompark Road, although empty it is of type of burial monument common in the Early-mid Bronze Age (c.2500-1250BC).
- 1.3.2 No archaeological works have been previously undertaken within the proposed development area.

## 2 OBJECTIVES

- 2.1 The objectives of the archaeological evaluation were:
- i)* to determine and assess the character, extent, condition, quality, date and significance of any buried archaeological remains within the proposed development area;
  - ii)* to advise and implement an appropriate form of mitigation, such as, excavation, post-excavation analyses and publication given the infeasibility of preserving the archaeological material *in situ*, should significant archaeological remains be encountered.

## 3 METHODOLOGY

---

- 3.1 The archaeological evaluation was undertaken on 6<sup>th</sup> July 2017 using an excavator fitted with a 2.0m wide toothless ditching bucket. A 10% evaluation (80 linear metres) of the development area (0.16 ha) was originally required however the presence of numerous services and existing buildings occupying the site reduced the scope for evaluation. Nevertheless 50 linear metres were excavated and good coverage of the area was achieved. The evaluation was undertaken in dry, clear conditions with good archaeological visibility. All excavations were monitored by an experienced field archaeologist. The trenches were individually recorded and subsequently backfilled, levelled and tracked-over by the machine.

## 4 RESULTS

### 4.1 Trench 1

- 4.1.1 Trench 1 was excavated in the garden area to the rear of the existing house (Figure 2). Excavation revealed a well sorted clay loam which ranged between 0.30m and 0.40m in depth. This deposit overlay an older pale brown clay top-soil 0.20m in depth. Numerous sherds of early 20<sup>th</sup> century glazed ceramics were observed within the more recent top-soil.

- 4.1.2 The underlying subsoil consisted of a grey brown boulder clay with occasional small sandstones. The subsoil was heavily disturbed by tree roots.

### 4.2 Trenches 2 & 3

- 4.2.1 Trenches 2 and 3 were excavated within the central forecourt which was under hardstanding. Excavation revealed made ground to a depth of 0.50m and directly overlying boulder clay. Occasional 19<sup>th</sup>/20th century ceramics were observed within the made ground.

- 4.3 No significant archaeology was observed in any of the excavated trenches.



Plate 1: South facing section of Trench 1





Plate 2: General view of site from north



Plate 3: Trench 3 south-west facing section

## 5 CONCLUSIONS & RECOMMENDATIONS

- 5.1 No significant archaeological finds or features were encountered and the area appears archaeologically sterile.
- 5.2 No further archaeological works are considered necessary. This recommendation will require confirmation by Mr Lawson of CECAS on behalf of City of Edinburgh Council.

## 6 REFERENCES

AOC Archaeology (2017) *63 Ladywell Avenue, Corstorphine, Edinburgh, Archaeological Evaluation: Written Scheme of Investigation*. Unpublished Client Report.

Scottish Government 2014 *Scottish Planning Policy*.

Scottish Government 2011 *PAN 2/2011 Planning and Archaeology*.



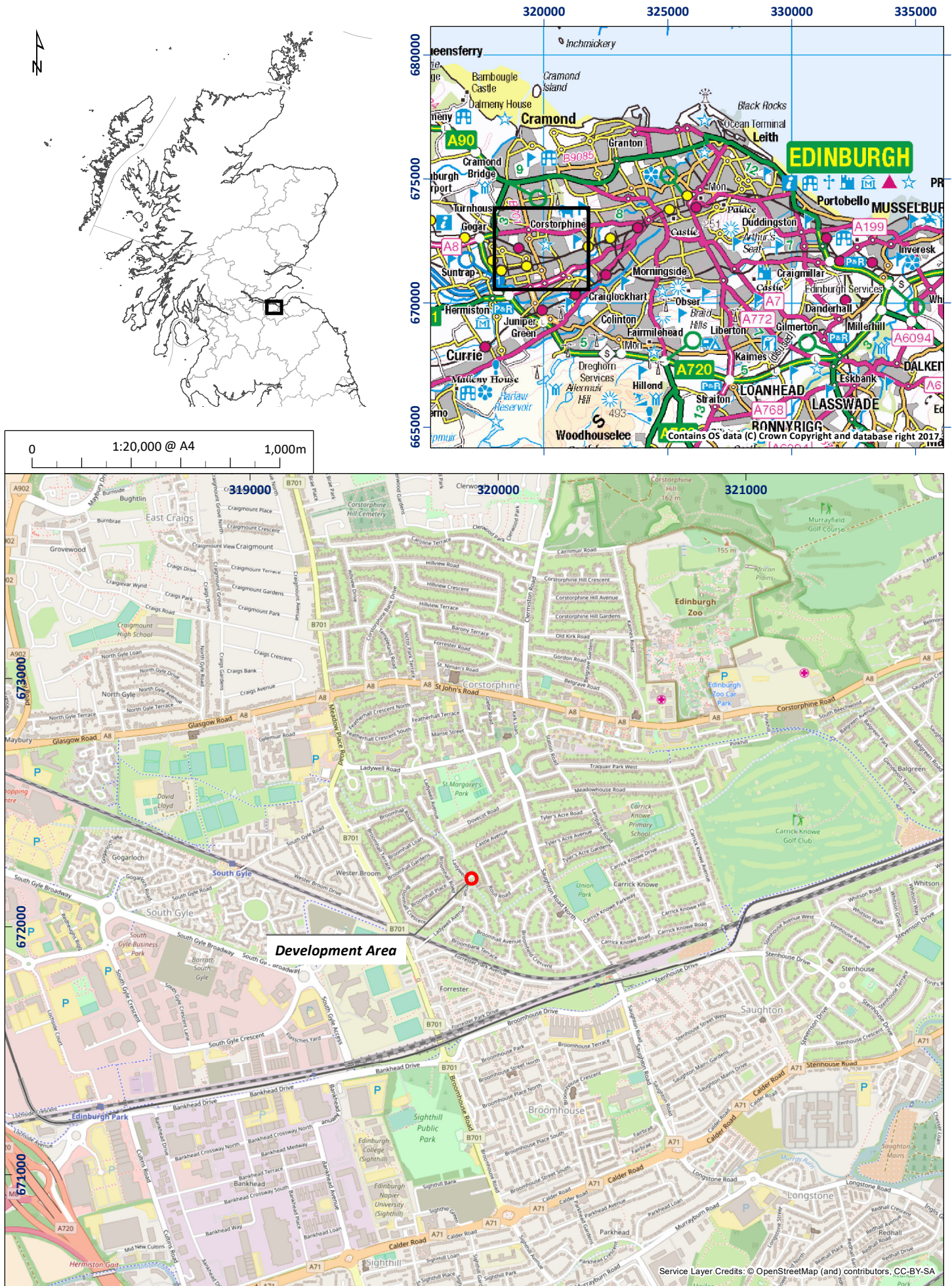


Figure 1: Site location plan



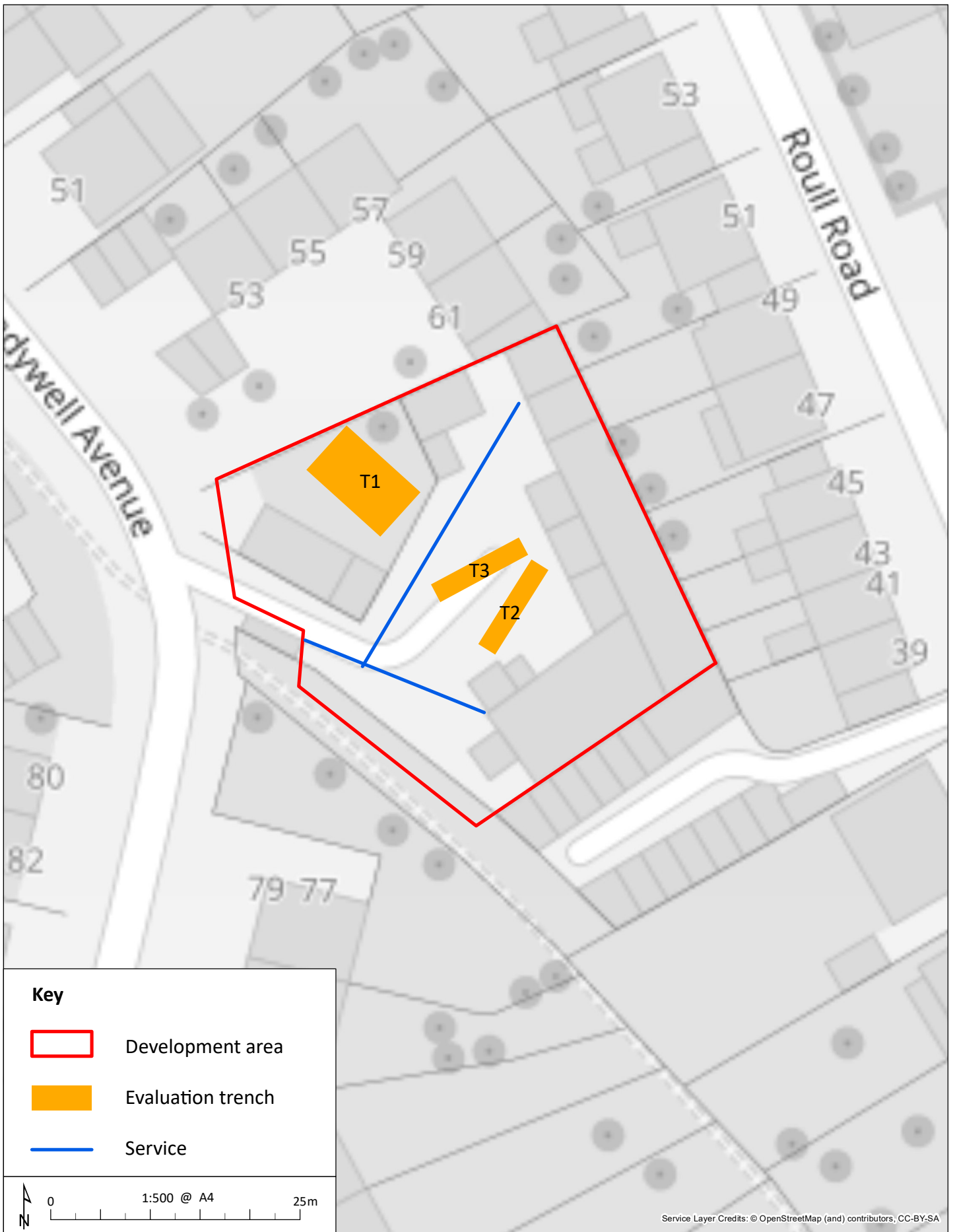


Figure 2: Trench location plan

---

**63 Ladywell Avenue, Corstorphine, Edinburgh**  
**Archaeological Evaluation:**  
**Evaluation Report**

**Section 2: Appendices**

## APPENDIX 1: Trench Descriptions

### Trench 1

<i>Dimensions</i>	6m by 10m
<i>Orientation</i>	NW-SE
<i>Depth of Garden soil</i>	0.3m – 0.40m
<i>Depth of old topsoil</i>	0.20m
<i>Depth of Excavation</i>	0.60m
<i>Significant Features</i>	N/A
<i>Other Features</i>	N/A
<i>Subsoil</i>	Compact, orange brown, sandy clay with occasional sandstones
<i>Finds</i>	20 <sup>th</sup> century ceramics

### Trench 2

<i>Dimensions</i>	10m by 2.0m
<i>Orientation</i>	NE-SW
<i>Depth of Made ground</i>	0.5m
<i>Depth of Excavation</i>	0.6m
<i>Significant Features</i>	N/A
<i>Other Features</i>	N/A
<i>Subsoil</i>	Compact, orange, sandy clay
<i>Finds</i>	19 <sup>th</sup> /20 <sup>th</sup> century ceramics

### Trench 3

<i>Dimensions</i>	10m by 2.0m
<i>Orientation</i>	NE-SW
<i>Depth of Made ground</i>	0.5m
<i>Depth of Excavation</i>	0.6m
<i>Significant Features</i>	N/A
<i>Other Features</i>	N/A
<i>Subsoil</i>	Compact, orange, sandy clay
<i>Finds</i>	19 <sup>th</sup> /20 <sup>th</sup> century ceramics

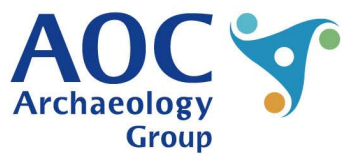
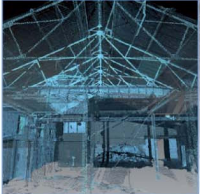
## APPENDIX 2: Photographic Record

### Camera 1

Frame	Description	From
1	Registration shot	-
2-3	Trench 1 Post excavation shots	SE
3	Trench 2 Post excavation shot	NW
4	Trench 3 Post excavation shot	NW
5-6-7	Area shots	Var
9-10	Shots of area post backfilling	SE

**APPENDIX 3: 'Discovery and Excavation in Scotland' Report**

<b>LOCAL AUTHORITY:</b>	City of Edinburgh Council
<b>PROJECT TITLE/SITE NAME</b>	63 Ladywell Avenue, Corstorphine, Edinburgh: Archaeological Evaluation Report
<b>PROJECT CODE:</b>	AOC 23691
<b>PARISH:</b>	Corstorphine
<b>NAME OF CONTRIBUTOR:</b>	Rob Engl
<b>NAME OF ORGANISATION:</b>	AOC Archaeology Group
<b>TYPE(S) OF PROJECT:</b>	Archaeological Evaluation
<b>NMRS NO(S)</b>	None
<b>SITE/MONUMENT TYPE(S):</b>	None
<b>SIGNIFICANT FINDS:</b>	None
<b>NGR (2 letters, 6 figures)</b>	NT 19904 72185(centre)
<b>START DATE (this season)</b>	06/7/2017
<b>END DATE (this season)</b>	06/7/2017
<b>PREVIOUS WORK (incl. DES ref.)</b>	None
<b>MAIN (NARRATIVE) DESCRIPTION:</b> (May include information from other fields)	<p><i>This report presents the results of a programme of archaeological evaluation undertaken by AOC Archaeology Group on behalf of New Age Developers ahead of the development of a land parcel at 63 Ladywell Avenue, Corstorphine, Edinburgh. The development area totalled 0.16 ha and consisted of garden, open areas of hard-standing and upstanding buildings.</i></p> <p><i>The archaeological evaluation was to consist of the machine trenching of 160m<sup>2</sup> (80 linear metres). However, the presence of extensive live services restricted the evaluation to 50 linear metres.</i></p> <p><i>No significant archaeological features or material was recorded. It was apparent that the open areas out-with the garden had been previously truncated and built up.</i></p>
<b>PROPOSED FUTURE WORK:</b>	None
<b>CAPTION(S) FOR ILLUSTRS:</b>	None
<b>SPONSOR OR FUNDING BODY:</b>	New Age Developments
<b>ADDRESS OF MAIN CONTRIBUTOR:</b>	AOC Archaeology Group
<b>EMAIL ADDRESS:</b>	Admin@aocarchaeology.com
<b>ARCHIVE LOCATION (intended/deposited)</b>	NMRS



**AOC Archaeology Group**, Edgefield Industrial Estate, Edgefield Road, Loanhead EH20 9SY  
tel: 0131 440 3593 | fax: 0131 440 3422 | e-mail: [admin@aocarchaeology.com](mailto:admin@aocarchaeology.com)

[www.aocarchaeology.com](http://www.aocarchaeology.com)