

Weirston Road, Kilwinning, North Ayrshire: Archaeological Excavation Data Structure Report

AOC 23756
29th August 2017



AOC
Archaeology
Group



ARCHAEOLOGY

HERITAGE

CONSERVATION

Weirston Road, Kilwinning, North Ayrshire: Archaeological Excavation Data Structure Report

On Behalf of: Mast Architects
51 St Vincent Crescent
Glasgow
G3 8NQ

National Grid Reference (NGR): NS 31320 43163

AOC Project No: 23756

Planning Application No: N/16/01162/PPM

OASIS No: aocarcha1-289824

Prepared by: Kevin Paton

Date of Fieldwork: 29th May to 27th June 2017

Date of Report: 10th August 2017

This document has been prepared in accordance with AOC standard operating procedures.

Author: Kevin Paton

Date: 11th July 2017

Approved by: Ross Murray

Date: 10th August 2017

Draft/Final Report Stage: Draft

Date: 29th August 2017

Enquiries to: AOC Archaeology Group
Edgefield Industrial Estate
Edgefield Road
Loanhead
EH20 9SY

Tel. 0131 440 3593
Fax. 0131 440 3422
e-mail. edinburgh@aocarchaeology.com



Contents

	Page
List of Illustrations	2
List of Plates	2
List of Appendices	2
ABSTRACT	3
1 INTRODUCTION	4
1.1 Background	4
1.2 Site Location	4
1.3 Historical Background	4
2 OBJECTIVES	4
3 METHODOLOGY	4
4 RESULTS	5
4.1 Introduction	5
4.2 Ring Groove Structures	5
4.3 Palisade Enclosures and other ditches	8
4.4 Other enclosed features	9
4.5 Outlying features	9
5 DISCUSSION	16
5.1 Introduction	16
5.2 Site phasing (Figure 7)	16
6 CONCLUSION AND RECOMENDATIONS	17
7 REFERENCES	18
7.1 Bibliographic references	18
7.2 Cartographic references	18
Appendix 1: Context Register	20
Appendix 2: Photographic Register	42
Appendix 3: Drawing Register	56
Appendix 4: Samples Register	64
Appendix 5: Finds Register	71
Appendix 6: 'Discovery and Excavation in Scotland' Report	72

List of Illustrations

- Figure 1: Site location plan
- Figure 2: Overall plan of excavation area
- Figure 3: Detailed plan of Structures 1, 4, and 5
- Figure 4: Detailed plan of Structure 2
- Figure 5: Detailed plan of Structure 3
- Figure 6: Overview of enclosures and pits
- Figure 7: Phased plan of excavation

List of Plates

- Plate 1: General view of Structures 1, 4, and 5
- Plate 2: General view of Structure 2
- Plate 3: General view of Structure 3
- Plate 4: Aerial view of excavation area showing enclosure ditches
- Plate 5: General view of stone packing in ditch [193]
- Plate 6: General view of stone packing in ditch [416]
- Plate 7: General view of possible hearth [432]
- Plate 8: General view of large pit [309]
- Plate 9: General view of fire pit [268]

List of Appendices

- Appendix 1: Context Register
- Appendix 2: Photographic Register
- Appendix 3: Drawing Register
- Appendix 4: Samples Register
- Appendix 5: Finds Register
- Appendix 6: Discovery and Excavation in Scotland Report

ABSTRACT

An archaeological excavation was undertaken by AOC Archaeology Group following the discovery of significant archaeology during a previous evaluation at Weirston Road, Kilwinning, North Ayrshire.

The excavation consisted of the monitored topsoil strip of a 3800 m² area in the western half of the development site. At least four ring groove structures and several palisaded enclosure ditches were revealed within the excavation area.

The structures range in size from 12 m to 16 m in diameter, with two clearly distinctive styles in use. The main entrances to the structures all face south east with three of the structures consisting of an opposing north west entrance as well. This distinctive style of ring groove structure is comparable with other structures in the west of Scotland that date to the Iron Age.

Along with the structures and enclosures there were over 150 other pit and/or post hole features within and out with the structures and enclosures. Two of these pits produced several flint flakes, a horseshoe scraper and pottery fragments that have comparisons with the Late Neolithic period. Possible iron slag was also found within a pit that could indicate industrial processes taking place near to the site.

1 INTRODUCTION

1.1 Background

1.1.1 An archaeological excavation was required by Mast Architects prior to a residential development at Weirston Road, Kilwinning, North Ayrshire. The Stage 2 excavation works were required following the discovery of significant archaeology during the Stage 1 evaluation works. The scope of the works was determined by North Ayrshire Council as advised on archaeological matters by the West of Scotland Archaeology Service (WoSAS). The works were conducted according to the terms of a *WSI Addendum* (AOC 2017), agreed on behalf of North Ayrshire Council by WoSAS and in accordance with *Scottish Planning Policy* (Scottish Government 2014) and *PAN 2/2011 Planning And Archaeology* (Scottish Government 2011).

1.2 Site Location

1.2.1 The development area at Weirston Road, Kilwinning is located at the south-eastern edge of the town, bordering onto Eglinton Country Park to the east, and is used as agricultural land related to Corsehillhead Farm. The site is to the immediate west of Weirston Road, with Corsehillhead Farm to the south, and the back gardens of properties on Moncur Road to the north and west (NGR: NS 31320 43163; Figure 1). The excavation area was situated over a slightly elevated sand and gravel ridge in the western half of the site.

1.3 Historical Background

1.3.1 There are no known heritage assets within the development area according to the National Record of the Historic Environment (NRHE) and the local Sites and Monuments Record (SMR). The nearest recorded heritage assets are located 500 m to the south east within Eglinton Country Park. These include the find spots of a stone axe head (Canmore ID 42077) and a flint blade (Canmore ID 42091).

1.3.2 According to the Ordnance Survey map of 1860, the development area was then part of Corsehillhead Farm. The farmhouse is depicted on this map as a long house surrounded by several smaller fields. It is the fields to the north that now form the development site. The origins of the farm may predate the 18th century as Roy's map of 1752-55 also depicts a building in this location, although it is difficult to determine if it is the same structure.

2 OBJECTIVES

2.1 The objectives of the archaeological excavation were:

- i) to expose the surviving archaeology within the development area through the application of a controlled strip around a designated area, with the possibility of expansion to provide a 10 m buffer around boundary features; and
- ii) the excavation and recording of all significant archaeological features within the area.

3 METHODOLOGY

3.1 The excavation consisted of the monitored topsoil strip of a 3800 m² area. This stripped area was larger than the original area suggested in the *WSI Addendum* (AOC 2017) due to the requirement for a 10 m buffer around any exposed archaeological features. The topsoil strip was conducted using a 13 tonne tracked excavator equipped with a bladed ditching bucket, and operating under the constant supervision of an experienced field archaeologist. All features were cleaned, defined and tagged during the initial strip, then excavated, recorded and surveyed according to AOC's standard practice.

4 RESULTS

4.1 Introduction

4.1.1 All archaeological works were conducted between the 29th May and 27th June 2017. Weather conditions were mainly fair throughout the course of the work conducted and archaeological visibility was good. The various data gathered from the excavation are presented as a series of appendices:

Appendix 1: Context Register

Appendix 2: Photographic Register;

Appendix 3: Drawing Register

Appendix 4: Samples Register

Appendix 5: Finds Register

Appendix 6: '*Discovery and Excavation in Scotland*' entry

4.1.2 The topsoil throughout the excavation area was a mid greyish brown clay loam that measured between 0.25 m and 0.55 m in depth. On the slopes to the east and west the topsoil overlay an earlier plough soil consisting of an orangey brown sandy loam. Furthermore, in the north west edge of the excavation area this plough soil overlay a dark reddish brown sandy silt that measured up to 0.1 m thick.

4.1.3 Regular plough scars or the remains of post medieval furrows were noted in the south west edge of site, and the west end of modern or post medieval ceramic tile field drains were also noted along the east edge of the excavation area (Figure 2).

4.1.4 The remaining features found throughout the excavation area all relate to much earlier occupation of the site and are divided into four separate groups:

- Ring grooved structures;
- Palisade enclosures and other ditches;
- Other enclosed features; and
- Outlying features.

4.2 Ring Groove Structures

4.2.1 There were four main ring groove structures present within the excavation area that all consisted of an outer ring groove with associated internal pit and post hole features. There was also one other partial ring groove that may have related to another more ephemeral structure.

4.2.2 *Structure 1*

4.2.3 This ring groove structure was located at the southern edge of the excavation area and consisted of a single ring groove [199], the southern edge of which continued out with the excavation area (Plate 1; Figure 3). The ring groove terminal was cut by a pit or post hole [243] that may have formed part of the entrance structure. Other features post dating the structure were pits or post holes [197], [213], [214], [227], and [257], as well as the ring grooves of Structure 4: [233] and [392].

4.2.4 Ring groove [199] measured 36.3 m in length and varied in width from 0.19 m to 0.6 m. It had a depth of 0.09 m to 0.23 m. Within the ring groove there was potential evidence of individual post holes set approximately 0.3 m apart. These individual settings were only visible in two of the eight slots excavated and were not consistent throughout the ring groove when fully excavated. One part of the ring groove was cut by a square shaped post hole [359] that may be evidence of repair within the ring groove. The internal diameter of the structure would have measured approximately 16 m with an entrance facing south east.

- 4.2.5 A large number of pits and post holes were located within the extents of this structure, but due to the presence of Structures 4 & 5 being located on almost the same footprint it was difficult to determine which features relate to which structure. One small pit [380] was located within the entrance to Structure 1, and was the only feature that was likely to relate to it. Other features within the structure that were out with Structure 4 and Structure 5 were pits or post holes [245], [285], [287], and [390]. Of these, pit [245] contained a possible piece of worked shale.
- 4.2.6 *Structure 2*
- 4.2.7 This ring groove structure was formed by two semi-circular grooves [171] and [262], measuring 20 m and 15 m long respectively by 0.2 m to 0.3 m wide and was 0.1 m to 0.3 m deep. Similar to ring groove [199] there was some evidence of individual posts in places but not consistent to the entire feature. The ring groove gave the structure an internal diameter of 12.6 m (Plate 2; Figure 4). The structure had two opposing entrances facing south east and north west, with the north west entrance simply formed by the terminals of the two ring grooves, measuring 1.65 m wide. The south east entrance between the terminals measured 4 m wide; two lines of post holes within this gap narrowed the entrance to approximately 2 m: post holes [153] and [169] to the north east, and [137], [139], [173] and [237] to the south west.
- 4.2.8 This structure also contained two internal curvilinear features [159] and [235] that were positioned around an internal post ring formed by post holes [185], [033], [017], [024], [325]/[323], [056]/[046], [131]/[129], [102], [092] and [141]. The internal curvilinear features formed a space measuring 9 m diameter and the post ring was approximately 7.5 m diameter.
- 4.2.9 As this structure seemingly only had a single phase of use, it is likely that most of the features contained within the outer ring groove are contemporary with its use. There were 23 other pits and/or post holes within this structure: [027], [030], [043], [046], [048], [059], [065], [072], [076], [078], [080], [084], [088], [098], [100], [104], [112], [114], [163], [205], [207], [211], [221], and [277]. A few pieces of worked flint were found within pits [163] and [027], as well as post hole [185]. A large lump of daub was also found within pit [027] and a single prehistoric ceramic fragment was found in pit [030]. Finally, two large fragments of probable iron slag (Dawn McLaren pers comm.) were found within central pit [207].
- 4.2.10 The relationships revealed during the excavations indicate that the internal features [185], [323] and [325] cut through an earlier enclosure ditch that appears to pass through the entrances of Structure 2, indicating that it predates the structure's construction. Furthermore, enclosure ditches [126] and [301] are noted as cutting through the ring grooves of Structure 2 indicating that they post date the structure.
- 4.2.11 *Structure 3*
- 4.2.12 This structure did not survive as well as the others and the north eastern edge was truncated by later ditches [157] and [249]. Part of ring groove [187] had also been removed by later ditches [193] and [467] (Plate 3; Figure 5). Despite these truncations, the form of this structure was similar to Structure 2 as it consisted of two semi-circular ring grooves [203] and [145]/[175]/[185] with part of ring groove [145] seen to cut through ditch [161]. The complete ring groove [203] measured 11.5 m long by 0.3 m to 0.4 m wide and 0.16 m to 0.33 m deep. The internal diameter of the structure measured 11.7 m, and like Structure 2, the entrances faced to the south east and north west. Similarly, the south eastern entrance was flanked on either side by sub rectangular pits [135] and [143] forming an entrance gap of approximately 2 m.
- 4.2.13 In contrast with Structure 2, the north western entrance of Structure 3 contained a post hole [201] that was close to the terminal of ring groove [203], suggesting more structural elements to this

entrance than were evident within Structure 2. Also in contrast was the lack of internal features, with no post ring or internal curvilinear features and only pits [052], [086], [096] and [116] contained by the ring groove. At this stage it is not possible to determine if any or all of these features are associated with Structure 3.

4.2.14 *Structure 4*

4.2.15 This structure was similar in style to Structures 2 and 3 in that it comprised two semi-circular ring grooves, [233] and [392], with entrances to the south east and north west (Plate 1; Figure 3). The ring grooves measured 16 m and 22 m in length respectively and were 0.15 m to 0.35 m wide by 0.1 m to 0.16 m deep. The north west entrance is partly obscured by ring groove [199] of Structure 1. The south-eastern entrance was also formed by the terminals of the two ring grooves and measured 2.1 m in width with post holes [251], [293], [075] and [260] and sub rectangular pits [197] and [239] set on either side and forming a sub structure which protruded from the ring groove. Two pits [227] and [229] were also present within the entrance to the structure and may be related to its use. Another pit related to this structure, pit [239], contained a possible rubbing stone (SF. 27)..

4.2.16 The ring grooves of Structure 4 post date the structural elements of Structure 1. Excavation also showed that Structure 4 truncated partial ring groove [388] of Structure 5. However, pit [241] was seen to post date the ring groove, and may be evidence of repair to the structure. Curvilinear feature [272] was also possibly related to Structure 4 as it lay to the immediate north east of the structure and appeared to run parallel to ring groove [392] around the north east edge before curving to the east, aligning with the structure's south east entrance. This feature contained an iron nail within its fill (SF 19). It is yet to be determined whether this was in-situ or the result of modern disturbance; it was found close to an area where a large amount of modern pottery was recovered from a shallow topsoil deposit.

4.2.17 Unlike Structure 2 there was no clear evidence of a post ring within the centre of Structure 4, and the presence of internal curvilinear features [189] and [167] cannot be proven to be contemporary with Structure 4 at this stage. They are not located as centrally as the corresponding features were in Structure 2 and they were also wholly contained by ring groove [199] of Structure 1. Similarly, the other 45 internal features of Structure 4 ([007], [009], [011], [013], [015], [019], [021], [025], [031], [037], [040], [042], [050], [054], [064], [067], [070], [083], [090], [094], [106], [108], [110], [118], [120], [122], [124], [133], [149], [151], [155], [165], [177], [179], [181], [183], [191], [217], [219], [223], [231], [311], [303], [305], and [329]) cannot be directly attributed to this structure.

4.2.18 Post hole [040] contained a piece of daub and post hole [118] contained a single pottery fragment. Also within this area were two pits [165] and [191] that were situated to the northern edge of Structure 1 & 4 that were found to contain prehistoric pottery fragments, a pot base and several flint flakes. One of the flint tools was a horseshoe scraper dating to the Late Neolithic and originating in Yorkshire (Rob Engl pers comm.).

4.2.19 *Structure 5*

4.2.20 Structure 5 consisted of a single semi circular ring groove fragment [388] situated within the extents of Structure 1 and cut by ring groove [233] of Structure 4 (see Plate 1; Figure 3). The ditch measured 16.5 m long by 0.2 m wide and was 0.15 m deep. The eastern terminal was cut by pit [239] and the western end became very shallow rather than terminating. The ditch was also cut by pit [390] and [285] along its length.

4.3 Palisade Enclosures and other ditches

- 4.3.1 The structures within the excavation area were enclosed by several sets of long curvilinear ditches (Plate 4; Figure 6). Two of these ditches, [157] and [249], were seen to truncate all other features on the site. These ditches ran parallel to each other on a north to south alignment. Two smaller ditches, [394] and [247], were found to be associated with them. These ditches were set near the base of the gravel slope to the east edge of the excavation area and followed the curve of the slope along this side. They both had gradual sloping sides, filled with reddish brown silty sand and measured 70 m long and varied in width and depth, up to 0.6 m wide and 0.2 m deep. These ditches were found to cut through ditches [126], [161], [264], [266], and [301], as well as the north eastern edge of Structure 3.
- 4.3.2 The other ditches revealed were much steeper sided with flat bases and contained various amounts of medium to large stones within their fills. The longest and deepest of these features was ditch [193] that measured 78 m long and is 0.45 m to 0.55 m wide by 0.4 m to 0.72 m deep. This ditch encircled the area containing Structures 1, 2, 4 & 5, cut through part of Structure 3 and formed a 1.6 m wide entrance with ditch [295]. Ditch [295] measured a further 18 m in length before leaving the southern edge of the excavation area.
- 4.3.3 The fills of ditches [295] and [193] were full of large stones, most of which gave no indication of post settings. Although within two sections near the southern edge of the excavation area stones were set along the external side of the cut leaving approximately 0.2 m of space for a line of posts (Plate 5). The side at which the stones were set changed between the external and internal side of the ditch within the two slots over a distance of 10 m.
- 4.3.4 The terminals of these two ditches had post holes, with post hole [531] at the eastern terminal of ditch [193] and post hole [279] at the western terminal of this ditch. Post hole [317] was located at the terminal of ditch [295]. Both terminals at the western edge also had small pits cut into the internal face of the ditch; pit [291] cut ditch [193] and pit [297] cut ditch [295]. These ditches were found to post date ditches [126], [161], [301], [376], [384], [467] and [519], and to pre date ditches [515] and [266]. These latter two ditches may have been related to the enclosure formed by ditches [193] and [295]. Ditch [266] potentially extended the enclosure to the north; while ditch [515] possibly created a double ditch facing south east.
- 4.3.5 Ditches [161]/[436], [416], [442] and [511] enclosed a similar space to that enclosed by ditches [193] and [295]. These ditches were also narrower and shallower in nature and measured a total of 89 m long, by 0.25 m to 0.5 m wide, and between 0.09 m to 0.65 m deep. Ditch [416] formed the deepest section of the enclosure and contained packing stones on either side of the ditch base for a line of posts in the centre that would have measured approximately 0.2 m wide (Plate 6). This packing arrangement was noted throughout the majority of ditch [416], but not in any of the other ditches that formed this enclosure.
- 4.3.6 Within this enclosure there were two possible entrances: one faced south east and was formed by ditch [511] and the truncated end of ditch [161]; the other faced north west and was formed by the terminals of ditches [416] and [436]. Both of the terminals had post hole features at their very ends, with post hole [418] at the end of ditch [416] and post hole [455] at the end of ditch [436]. The position of these post holes would have provided an entrance 1.6 m wide.
- 4.3.7 Ditch [264] was possibly related to this enclosure and connected into ditch [436] near its terminal. It also encircled Structure 3 before terminating less than 0.2 m from the eastern edge of ditch [161]. Ditch [467] also appeared to relate to ditch [416], as it formed an entrance with it and ran parallel to ditch [436]/[161] for the majority of their lengths. This ditch measured 32.5 m long and varied in width

and depth, being up to 0.61 m wide by 0.52 m deep. Post hole [465] was located at the western terminal of ditch [467], displaying an arrangement similar to that in ditch [416]. Post hole [465] formed a 1.2 m wide entrance gap with ditch [416].

- 4.3.8 Another set of ditches [126] and [301] truncated Structure 2 and both ditches terminated within the centre of the structure and formed an open ended D-shape to the north east of Structures 1, 4 & 5. The fill of ditch [126], near the centre of Structure 2, contained a fragment of daub and a piece of decorated prehistoric pottery. The entrance between the western terminals was 2.1 m wide and both of these ditches pre date ditch [193] and [515], and their eastern terminals were obscured by ditch [157]. Two large sub rectangular pits [299] and [307] were positioned to the immediate east of the enclosure's open end and may be related to it. Both pits were 4 m apart and were very similar in size and shape measuring 2 m long (north to south) by 1 m wide and between 0.16 m and 0.3 m deep.
- 4.3.9 Ditches [126] and [301] both post dated ditch [384], which runs through the entrances of Structure 2 and forms the majority of a circular enclosure around Structures 1, 4 & 5 along with ditch [376]. These ditches measured 51 m in length (combined) and were 0.2 m to 0.43 m wide by 0.2 m to 0.38 m deep. The entrance gap between the two ditches faced north west and measured 1.6 m wide and the internal diameter of the enclosure was approximately 36 m. This enclosure pre dates ditches [295], [193], [416], and [126] & [301], as previously mentioned.

4.4 Other enclosed features

- 4.4.1 Situated out with the various structures and enclosed by the numerous enclosure ditches there were 67 pit or post hole features (Figures 3-6). The majority of these features were small to medium sized (0.3 m to 0.5 m in diameter) sub circular features varying in depth from 0.05 m to 0.4 m ([289], [313], [315], [319], [321], [333], [335], [337], [339], [341], [349], [351], [353], [355], [357], [367], [369], [382], [396], [400], [402], [410], [430], [434], [438], [449], [451], [453], [457], [475], [489], [491], [494], [496], [503], [505], [507], [509], [513], and [517]).
- 4.4.2 A set of two possible post holes [361] and [374], were connected with a short linear feature [371] and may be an indication of a partial ring groove situated to the immediate south east of the Structure 1 terminal. However, the limited length of the linear feature within the excavation area prevented determination of its full nature. Also in this area was a cluster of 18 pit or post hole features: [229], [343], [345], [347], [363], [365], [378], [386], [412], [414], [426], [428], [445], [447], [469], [477], [498], and [529], that may have some relation to the use of one or more of the Structures 1,4 & 5.
- 4.4.3 Other features of note include the four post holes, [479], [481], [485] and [487], that form a rectangle measuring 3.2 m long by 1.6 m wide and aligned north east to south west (see Figure 4). Each of the post holes had steep to vertical sides onto a flat base and measured between 0.4 m to 0.6 m wide and 0.2 m to 0.35 m deep. A small pit or post hole [483] was situated within this grouping and may be related.
- 4.4.4 A possible hearth [432] was situated next to small pit [430] to the immediate north east of Structure 3 (see Figure 5). This pit measured 0.93 m in diameter by 0.17 m deep and contained a charcoal rich fill [433] at its base, which was covered by a re-deposited subsoil deposit [440] (Plate 7).

4.5 Outlying features

- 4.5.1 Twenty-two features consisting mainly of shallow pits ([253], [255], [281], [398], [404], [406], [408], [420], [422], [461], [459], [463], [471], [473], [499], [501], [521], [523], [525], and [527]) of various size and shape (Figures 3-6) were found to be external to the enclosures but were located within the excavation area.

- 4.5.2 The two main features of note were the large pit [309] and probable fire pit or oven [268]. Both were situated on the north west edge of the excavation area. Pit [309] measured 2.1 m in diameter by 0.34 m deep (Plate 8). The fill of this large pit consisted of compact reddish brown silty sand and patches of re-deposited gravel sitting on an irregular base. A piece of quartz and worked flint were found within the fill of the pit (SF 18).
- 4.5.3 The fire pit or oven [268] measured 1 m in diameter by 0.27 m deep. It had an in-situ base deposit of charcoal, organic material and heat affected stones (Plate 9). This was overlain by a mixture of compact re-deposited subsoil and reddish brown silty sand that contained a quartz pebble and single piece of worked flint (SF 14).



Plate 1: General view of Structures 1, 4 & 5



Plate 2: General view of Structure 2



Plate 3: General view of Structure 3



Plate 4: Aerial view of excavation area showing enclosure ditches



Plate 5: General view of stone packing in ditch [193]



Plate 6: General view of stone packing in ditch [416]



Plate 7: General view of hearth [432]



Plate 8: General view of large pit [309]



Plate 9: General view of fire pit [268]

5 DISCUSSION

5.1 Introduction

- 5.1.1 The findings from the excavation give a clear indication that the site at Weirston Road relates to a prehistoric settlement. The area containing the archaeological features is in an ideal position for habitation during prehistory. The gravel ridge that the features were placed upon would have provided a raised, free draining area for the settlement with access to water between 500 m to 1 km away on all sides (River Garnock to the west, Bannoch Burn to the north, and Lugton Water to the south and east).
- 5.1.2 What is not clear is what period during prehistory that the site relates to. The artefacts found within pits [165] and [191] provide evidence that some of the activity on site dated to the Late Neolithic period (circa. 4000 to 3000 BC). However, the presence of possible iron working slag in pit [207] provides evidence of use from a much later period, probably the Late Iron Age (circa 400 to 100 BC).
- 5.1.3 This Iron Age date is also evidenced by the style of roundhouse revealed in Structures 2, 3 & 4 which allows for an estimation of the period of occupation through comparison of similar sites in the area. The most obvious parallels for this site are the Middle Iron Age sites at Rispaun Camp, Whithorn (Haggarty & Haggarty 1983), Hayknowes Farm, Annan (Gregory 2001) and Chlenry Cottages, Cults (Cavers 2011). All of these sites contained ring groove roundhouses with diametrically opposed entrances, and all have been dated to the first centuries BC/AD.
- 5.1.4 Furthermore, from comparison to other sites with similarly enclosed ring groove structures such as the ones at West Acres, Newton Mearns (Toolis 2005) and Aird Quarry, Castle Kennedy (Cook, 2006), it is possible that parts of the site may also date to the Bronze Age (Circa. 1500 to 750 BC). Initial comparisons and approximate dating of some of the artefacts make it clear that the settlement activity revealed does not relate to one single period of prehistory. Therefore, the multiple phases of use, indicated by the interrelationships mentioned in the results, suggest that the site was abandoned and repopulated but also indicate periods of redevelopment of an existing settlement.

5.2 Site phasing (Figure 7)

- 5.2.1 Starting from the earliest phase and working forwards through time the first phase on site is likely to have consisted of Structure 1, enclosed by ditches [384] and [376] with an entrance to the north west. From comparable sites this settlement area is likely to date from the Bronze Age at the earliest. Structure 1 was truncated by the construction of Structure 4 so must pre date it. Structure 4 also truncated Structure 5, but due to Structure 5's ephemeral nature it is too difficult to ascertain its position within the phases. As for the enclosure surrounding Structure 1, these ditches are truncated by ditch [126], [301], [295], [416], [193] and two pits within Structure 2 that are assumed to relate to the interior use of the structure. Given the evidence relating to Structure 2, 3 & 4, it is probable that ditches [384] and [376] also pre date Structure 4.
- 5.2.2 The second phase on site would appear to be the creation of enclosure ditches [442]/[416], [436]/[161], and possibly ditch [511] encircling the area that contains Structures 2 & 4, with entrances to the north west and south east. This phase appears to have been a later rehabilitation following the abandonment of the original site; as evidenced by the change in architectural style and complete disregard for the original ditch [384] and for the presence of Structure 1. Phase 3 would have followed on closely from Phase 2 with the enclosure ditch [161] reconstructed for the construction of Structure 3. Phase 3 also included the expansion of the enclosed area using ditch [264], which connected with earlier ditch [436] and respected the edge of ditch [161].
- 5.2.3 Phase 4 would appear to have involved the removal of Structure 2 and 3 as a result of the addition of enclosure ditches [467], [126] and [301], all of which may be contemporary. The other enclosure

ditches may have remained in place or ditches [264], [161] and [436] may have been replaced, with pits [299] and [307] being used at the open end of the D-shaped enclosure formed by ditches [126] and [301]. This phase suggests the contraction of the settlement and the constant use of Structure 4 throughout Phases 2-4, without major repairs noted to the ring groove.

- 5.2.4 Phase 5 appears to include the re-use of Structure 4 alongside ditches [193], [295], and [515] to enclose a similarly sized area with an entrance to the north west. An additional area to the north is enclosed by ditch [266]. The constant use of Structure 4 is difficult to imagine as the life of a single round house is expected to be around 15 years (Barber & Crone 2001). This would suggest that the structure was constantly repaired on the same footprint and that the enclosures were rebuilt several times over a short period, or that the main structure for the latest phases is out with the excavation area to the south.
- 5.2.5 Finally, the construction of boundary ditches [157] and [249] appears to signal the end of the settlement, and may be an indication of later agricultural use on the site rather than the re-use of the settlement site in prehistory.

6 CONCLUSION AND RECOMENDATIONS

- 6.1 The archaeological excavation at Weirston Road has been successful in excavating and recording a previously unknown prehistoric settlement site. The presence of a multi phased settlement that shows potential use from the Late Neolithic/Early Bronze Age to the Iron Age is of great significance, and as such the findings will require greater analysis and research through a programme of Stage 3 post-excavation works. These further works will fulfill the requirements set out in the *Written Scheme of Investigation* (AOC 2017b), and will be detailed in a Post-Excavation Research Design (PERD).
- 6.2 The scope of any further work will be determined by North Ayrshire Council, who are advised on archaeological matters by the West of Scotland Archaeology Service.

7 REFERENCES

7.1 Bibliographic references

AOC 2017a *Addendum to Weirston Road, Kilwinning, North Ayrshire: Written Scheme of Investigation*. Unpublished client report

AOC 2017b *Weirston Road, Kilwinning: Archaeological Evaluation Written Scheme of Investigation*. Unpublished client report

Barber, J. & Crone A. 2001 'The duration of structures, settlements and sites: some evidence from Scotland' in Rafter, B & Hickey, J (eds) *Recent Developments in Wetland Research*. Department of Archaeology, University College Dublin, Monograph Series, Vol. 2 (WARP Occasional Paper 14), 69-86

Cavers, G 2011 *Cults Landscape Project: Excavation of Palisaded Enclosure at Chlenry Cottages (Site 5) Data Structure Report*. Grey Literature Report

Cook, M 2006 'Excavations of a Bronze Age Roundhouse and Associated Palisade Enclosure at Aird Quarry, Castle Kennedy, Dumfries and Galloway' *Transactions of the Dumfries and Galloway Natural History and Antiquarian Society* LXXX, p 9-28

Gregory, R 2001 'Excavations at Hayknowes Farm, Annan' *Transactions of the Dumfries and Galloway Natural History and Antiquarian Society* LXXV, p.29-46

Haggarty, A & Haggarty, A 1983 'Excavations at Rispain Camp, Whithorn' *Transactions of the Dumfries and Galloway Natural History and Antiquarian Society* vol. 58 p. 21-51

Scottish Government 2014 Scottish Planning Policy.

Scottish Government 2010 PAN 2/2011 Planning & Archaeology.

Toolis, R. 2005 'Bronze Age pastoral practices in the Clyde Valley: excavations at West Acres, Newton Mearns', *Proc Soc Antiq Scot*, 135 p471-504

7.2 Cartographic references

1752-55 Roy, William *Military Survey of Scotland*

1856 Ordnance Survey *Ayr XVI.4 (Kilwinning)*

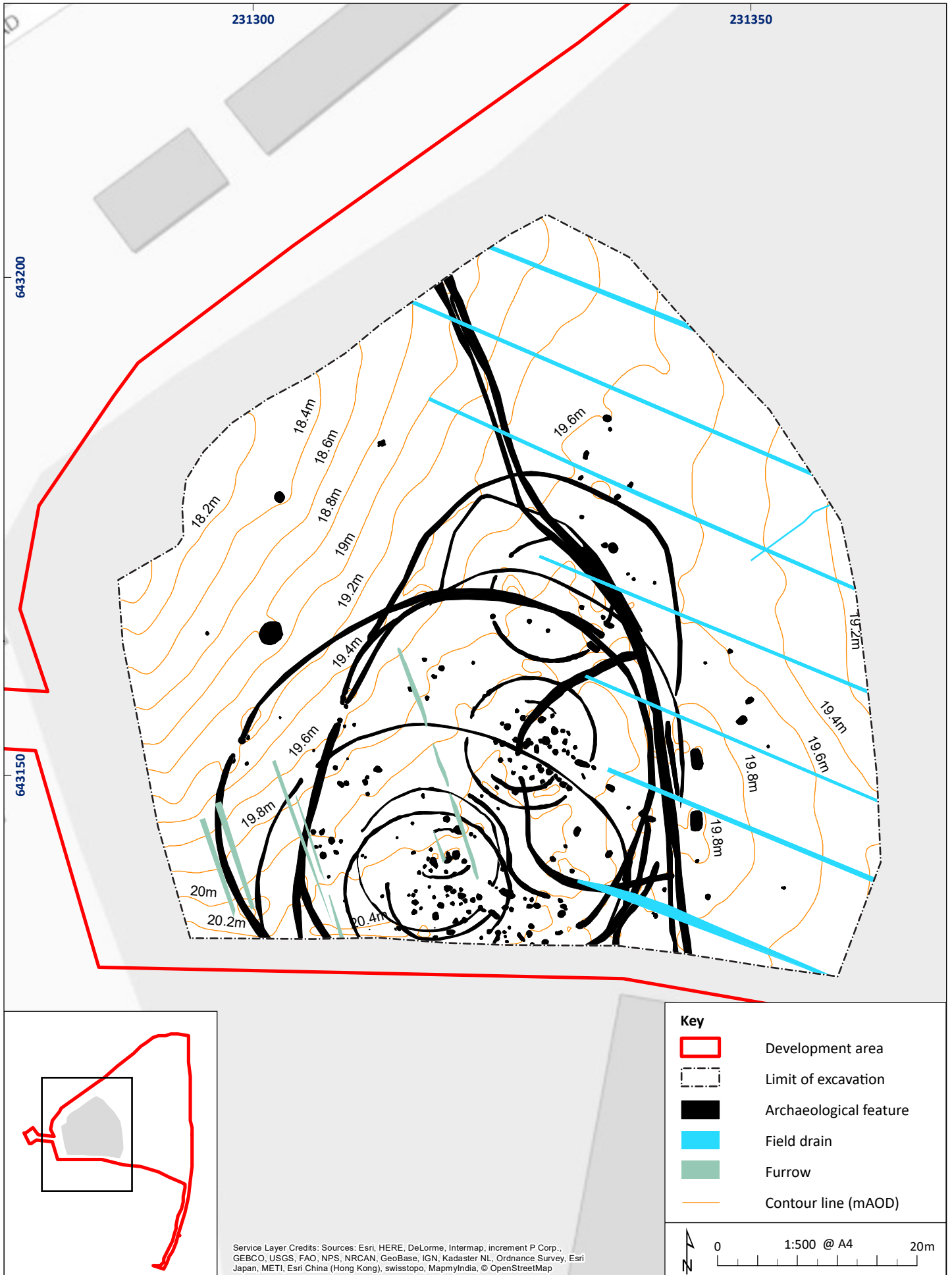


Figure 2: Overall plan of excavation area

01/23756/EXCREP/02/01

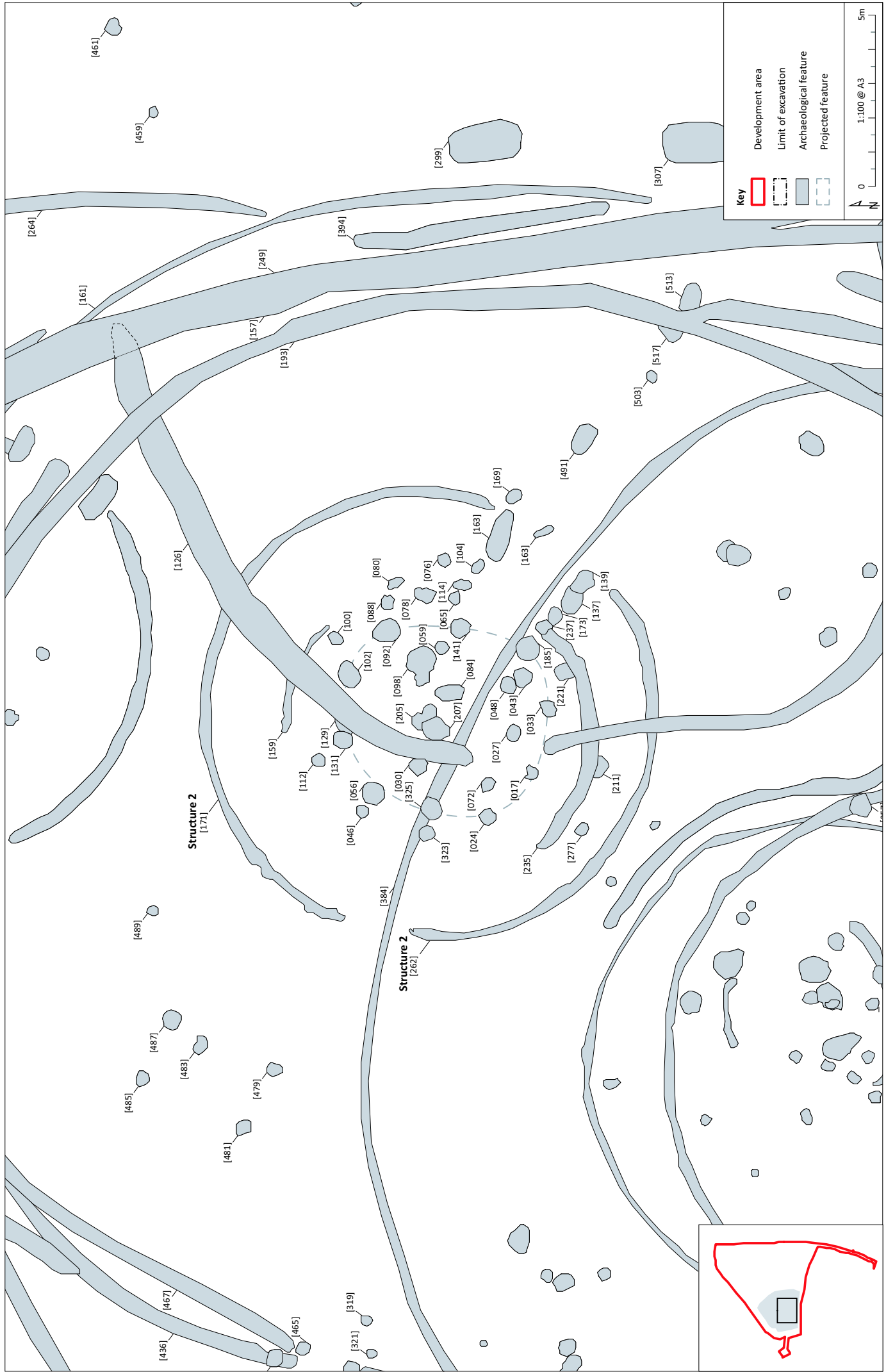


Figure 4: Detailed plan of Structure 2

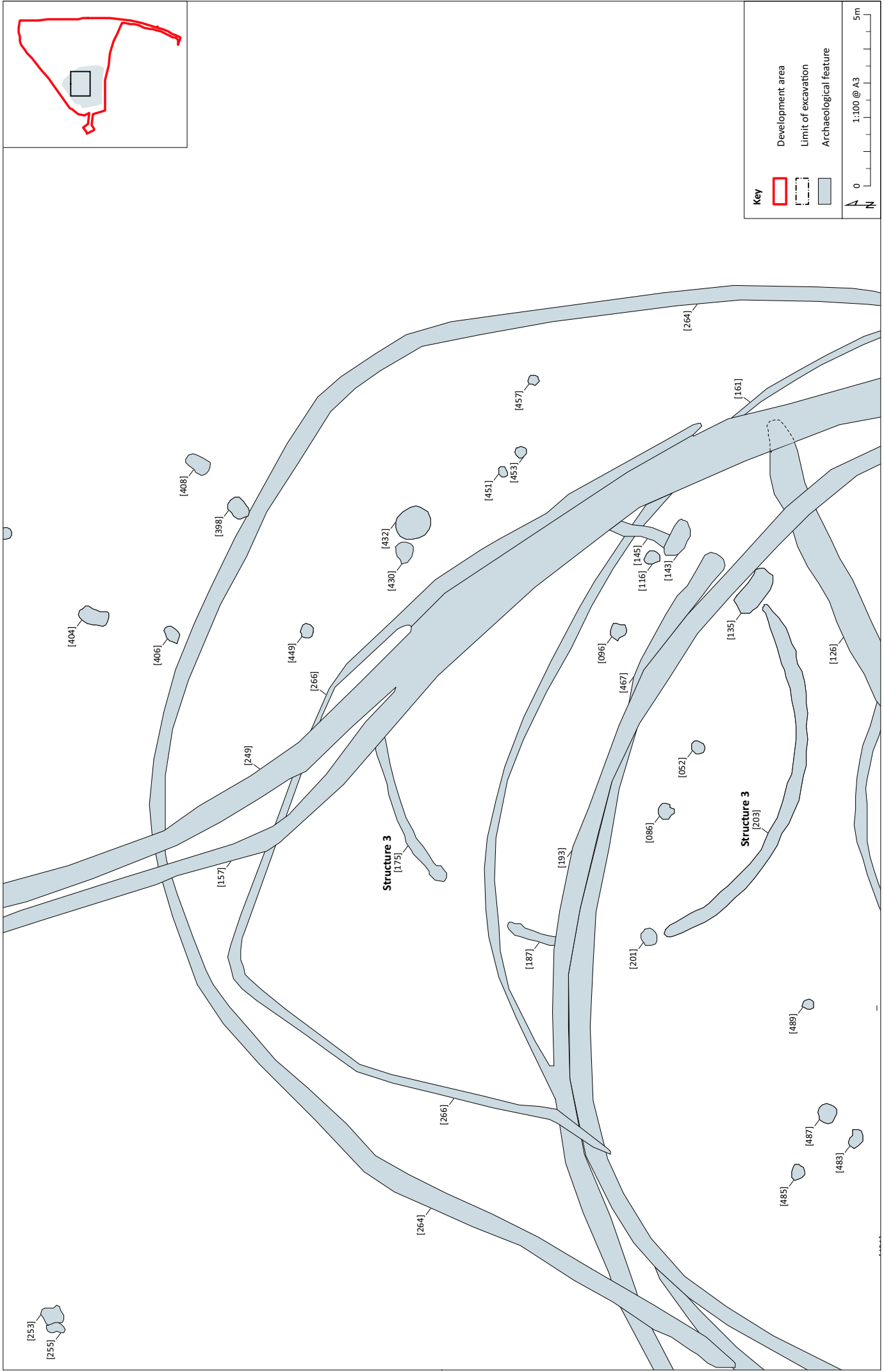
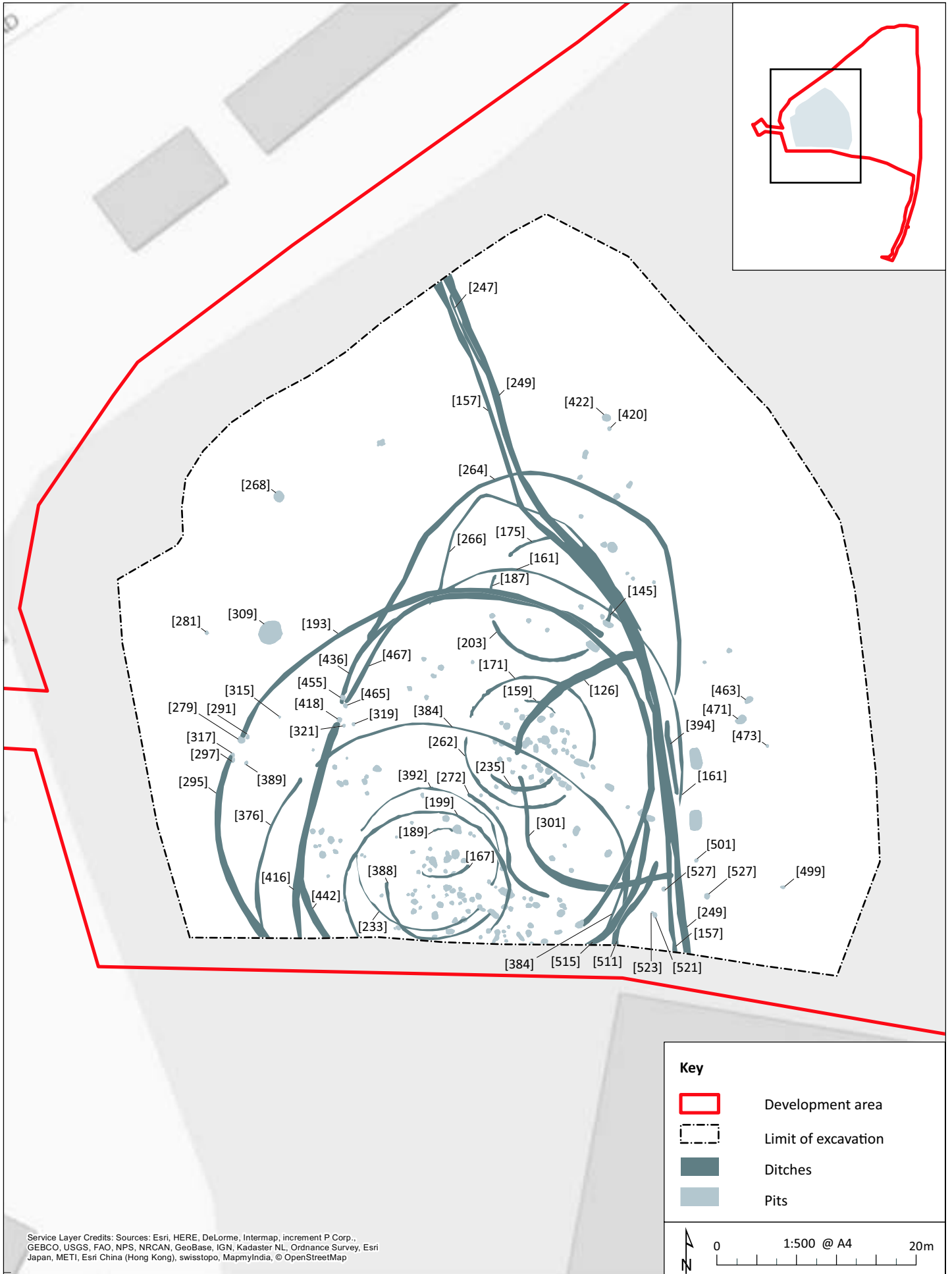


Figure 5: Detailed plan of Structure 3



Service Layer Credits: Sources: Esri, HERE, DeLorme, Intermap, increment P Corp., GEBCO, USGS, FAO, NPS, NRCAN, GeoBase, IGN, Kadaster NL, Ordnance Survey, Esri Japan, METI, Esri China (Hong Kong), swisstopo, MapmyIndia, © OpenStreetMap

Figure 6: Overview of enclosures and pits

01/23756/EXCREP/06/02

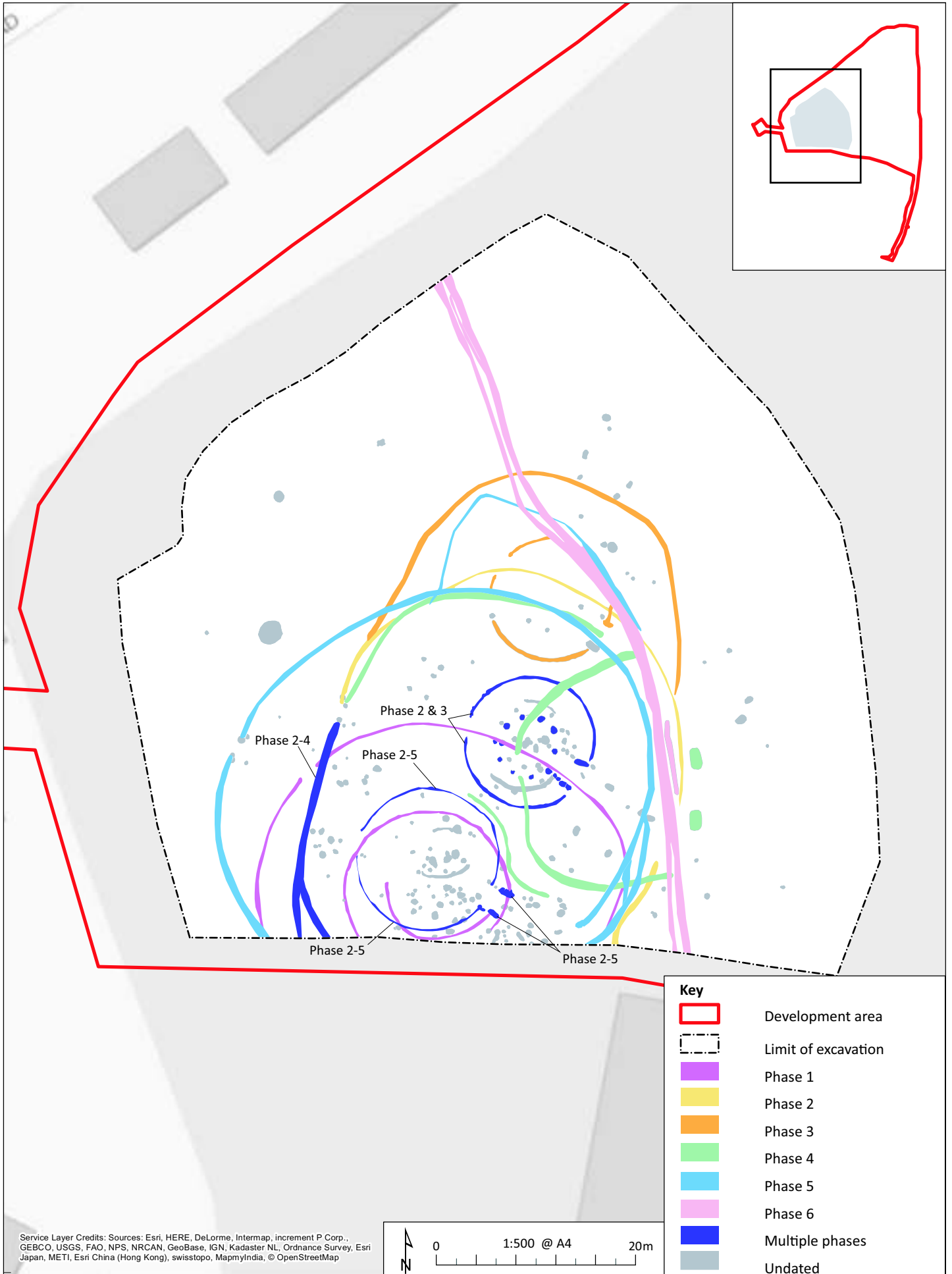


Figure 7: Phased plan of excavation

01/23756/EXCREP/07/02

**Weirston Road, Kilwinning, North Ayrshire:
Archaeological Excavation
Data Structure Report**

Section 2: Appendices

Appendix 1: Context Register

*ST1 refers to area enclosed by Structure 1 and 4

Context No.	Area	Description and Interpretation
001		Dark grey sandy clay loam with frequent coal and occasional modern rubbish inclusions. Measures 0.25 m to 0.55 m thick across the excavation area. Modern topsoil
002		Dark brown silty loam with frequent coal and stone inclusions. Measures 0.2 m thick on the slopes to the east, west and northern edges of excavation area. Former plough soil
003		Reddish brown silt with frequent small rounded stones. Measures 0.1 m thick along the far western edge. Only survives 10 m from edge and is similar to the fill of the prehistoric features. Possible prehistoric ground surface/soil
004		Yellowish brown fine gravel with orangey brown silty gravel on the slopes to the east and west. Eastern edge becomes a clayey sand and gravel and then clay at the very edge. Natural subsoil
005		Dark reddish brown silty sand with gravel, small stone and rare charcoal inclusions. Fill of pit or post hole [006]
006		Circular cut with steep sides onto a rounded base measuring 0.37 m diameter by 0.12 m. Pit or post hole within ST1
007		Circular cut with gradual sides and flat base measuring 0.61 m diameter by 0.06 m. Pit within ST1
008		Dark reddish brown silty sand with gravel inclusions. Fill of pit or post hole [007]
009		Circular cut with gradual sides onto flat base measuring 0.33 m diameter by 0.1 m. Pit or post hole within ST1
010		Dark reddish brown silty sand with gravel inclusions. Fill of pit or post hole [009]
011		Circular cut with gradual sides onto rounded base measuring 0.57 m diameter by 0.12 m. Pit within ST1
012		Dark reddish brown silty sand with gravel, large stones, charcoal and burnt bone inclusions. Fill of pit [011]
013		Dark reddish brown silty sand with gravel, large stones and charcoal inclusions. Fill of pit or post hole [014]
014		Circular cut with steep sides onto a rounded base measuring 0.4 m diameter by 0.16 m. Pit or post hole within ST1
015		Sub-circular cut with moderate sides onto a flat base measuring 0.78 m by 0.67 m by 0.14 m. Pit within ST1
016		Dark reddish brown silty sand with gravel, medium stones, charcoal and burnt bone fleck inclusions. Fill of pit [015]
017		Sub-circular cut with steep sides onto an irregular base sloping to the E. Orientated E-w and measures 0.48 m by 0.4 m by 0.17 m. Pit within ST2
018		Mid reddish brown silty sand with charcoal, rounded stones and gravel inclusions. Fill of pit [017]
019		Dark reddish brown silty sand with gravel and burnt bone inclusions. Fill of pit [020]
020		Oval shaped feature with gradual sides onto a flat base measuring 0.2 m by 0.24 m by 0.05 m. Pit or post hole within ST1
021		Dark reddish brown silty sand with gravel, burnt bone and charcoal fleck inclusions. Fill of pit [022]
022		Oval shaped cut with gradual sides onto a rounded base measuring 0.37 m by .29 m by 0.08 m. Pit within ST1
023		Dark reddish brown silty sand with gravel and charcoal fleck inclusions. Fill of pit [024]
024		Circular cut with steep sides onto a flat base measuring 0.48 m diameter by 0.18 m. Pit or post hole within ST2
025		Sub-circular shaped cut with moderate to steep sides onto a concave base measuring 0.67 m diameter by 0.26 m. Pit within ST1

026		Dark reddish brown silty sand with gravel and one large stone inclusion. Fill of pit [025]
027		Oval shaped cut with steep sides onto a rounded base measuring 0.56 m by 0.51 m by 0.43 m. Post hole within ST2
028		Dark reddish brown silty sand with gravel, charcoal flecks and large stone inclusions. Fill of post hole [027]
029		Sub-circular shaped cut with moderate sides onto a rounded base measuring 0.5 m by 0.42 m by 0.16 m. Pit within ST2
030		Dark reddish brown silty sand with gravel and charcoal inclusions. Fill of pit [029]
031		Circular shaped cut with moderate sides onto a rounded base measuring 0.37 m by 0.33 m by 0.13 m. Pit or post hole within ST1
032		Dark reddish brown silty sand with gravel and charcoal inclusions. Fill of pit or post hole [031]
033		Oval shaped cut with steep sides onto a flat base orientated NE-SW and measuring 0.55 m by 0.5 m by 0.3 m. Pit or post hole within ST2
034		Dark reddish brown silty sand with gravel, charcoal and medium stone inclusions. Fill of pit or post hole [033]
035		Oval shaped cut with steep sides onto a flat base measuring 0.51 m by 0.54 m by 0.21 m. Pit or post hole within ST2
036		Dark reddish brown silty sand with gravel, large stones and charcoal inclusions. Fill of pit or post hole [035]
037		Circular shaped cut with moderate sides onto a rounded base measuring 0.32 m diameter by 0.1 m. Post hole within ST1
038		Dark reddish brown silty sand with gravel, charcoal and burnt bone inclusions. Fill of post hole [037]
039		Dark reddish brown silty sand with gravel, small stones and charcoal inclusions. Fill of post hole [040]
040		Circular shaped cut with steep sides onto a flat base measuring 0.75 m diameter by 0.52 m. Closely associated with pit [042]. Post hole within ST1
041		Dark reddish brown silty sand with gravel, small stones and charcoal fleck inclusions. Fill of pit [042]
042		Oval shaped cut with steep sides onto a flat base measuring 0.49 m by 0.44 m by 0.14 m. Closely associated with post hole [040]. Pit within ST1
043		Oval shaped cut with steep sides onto a flat base orientated N-S and measuring 0.6 m by 0.5 m by 0.57 m. Post hole within ST2
044		Light brown silty sand with occasional stone and gravel inclusions. Measures 0.13 m thick Upper fill of post hole [043]
045		Dark brown/black silty sand with abundant charcoal, large stones and gravel inclusions. Measures 0.3 m to 0.5 m thick. Lower fill of post hole [043]
046		Circular shaped cut with steep sides onto a flat base. Measures 0.4 m diameter. Pit or post hole within ST2
047		Dark reddish brown silty sand with gravel, small to large stone and charcoal inclusions. Fill of pit or post hole [046]
048		Oval shaped cut with gradual sides onto a flat base orientated N-S and measuring 0.48 m by 0.35 m by 0.21 m. Pit or post hole within ST2
049		Light brown silty sand with occasional stone and gravel inclusions. Fill of pit or post hole [048]
050		Circular shaped cut with steep sides onto a rounded base measuring 0.43 m diameter by 0.4 m. Post hole within ST1
051		Dark reddish brown silty sand with gravel, medium stones and charcoal fleck inclusions. Fill of post hole [050]

Weirston Road, Kilwinning, North Ayrshire

052		Circular shaped cut with moderate sides onto a flat base measuring 0.33 m by 0.04 m. Pit within ST3
053		Dark reddish brown silty sand with gravel and small stone inclusions. Fill of pit [052]
054		Circular shaped cut with steep sides onto a rounded base measuring 0.54 m by 0.27 m. Post hole within ST1
055		Dark reddish brown silty sand with gravel, medium stone and charcoal fleck inclusions. Fill of post hole [054]
056		Circular shaped cut with steep sides onto a rounded base measuring 0.52 m diameter by 0.23 m. Post hole within ST2
057		Dark reddish brown silty sand with gravel, occasional large stones, charcoal and burnt bone inclusions. Fill of post hole [056]
058		Circular setting of stones within cut [056]
059		Circular shaped cut with gradual sides onto a sloping base measuring 0.37 m diameter by 0.15 m. Pit within ST2
060		Dark reddish brown silty sand with gravel, small stones and charcoal fleck inclusions. Fill of pit [059]
061		Dark reddish brown silty sand with gravel and charcoal fleck inclusions. Lower fill of post hole [040]
062		Large stones set vertically within cut [040] with flat stones in the base. Post setting within post hole [040]
063		Dark reddish brown silty sand with gravel, charcoal and burnt bone inclusions. Fill of pit or post hole [064]
064		Circular shaped cut with moderate to steep sides onto a rounded base measuring 0.26 m diameter by 0.06 m. Pit or post hole within ST1
065		Oval shaped cut with moderate sides and rounded base measuring 0.43 m by 0.4 m by 0.17 m. Pit within ST2
066		Dark reddish brown silty sand with gravel, small stones and charcoal fleck inclusions. Fill of pit [065]
067		Circular shaped cut with steep sides onto a rounded base measuring 0.67 m diameter by 0.32 m. Post hole within ST1
068		Greyish brown sandy silt with gravel, charcoal and burnt bone inclusions. Measures 0.17 m thick. Upper fill of post hole [067]
069		Dark reddish brown silty sand with gravel inclusions. Measures 0.15 m thick. Lower fill of post hole [067]
070		Circular shaped cut with moderate sides onto a rounded base measuring 0.47 m diameter by 0.12 m. Conjoined with post hole [067]. Pit within ST1
071		Greyish brown sandy silt with gravel, charcoal and burnt bone inclusions. Fill of pit [070]
072		Circular shaped cut with steep sides onto an uneven base measuring 0.41 m diameter by 0.14 m. Pit or post hole within ST2
073		Dark reddish brown silty sand with gravel, small stones and charcoal fleck inclusions. Fill of pit or post hole [072]
074		Dark reddish brown silty sand with gravel, charcoal flecks, burnt bone and large stones inclusions. Fill of post hole [075]
075		Sub-circular shaped cut with steep sides onto a flat base measuring 0.36 m by 0.38 m by 0.16 m. Post hole within ST1
076		Circular shaped cut with moderate to steep sides onto a flat base measuring 0.4 m by 0.1 m. Pit within ST2
077		Dark reddish brown silty sand with gravel, small stone and charcoal fleck inclusions. Fill of pit [076]

Weirston Road, Kilwinning, North Ayrshire

078		Oval shaped cut with moderate/shallow sides onto an undulating base, orientated N-S and measuring 0.66 m by 0.44 m by 0.09 m. Pit within ST2
079		Dark reddish brown silty sand with gravel, medium stones and charcoal fleck inclusions. Fill of pit [078]
080		Oval shaped cut with moderate sides onto an undulating base, orientated NW-SE and measuring 0.55 m by 0.3 m by 0.1 m. Pit within ST2
081		Dark reddish brown silty sand with gravel, small stone and charcoal fleck inclusions. Fill of pit [080]
082		Dark reddish brown silty sand with gravel, large stone, charcoal flecks and burnt bone inclusions. Fill of post hole [083]
083		Sub-circular shaped cut with steep sides onto a rounded base measuring 0.5 m by 0.47 m by 0.36 m. Post hole within ST1
084		Keyhole shaped cut with very steep sides onto a stepped base with shallower end to the S. Orientated N-S and measuring 0.81 m by 0.4 m by 0.34 m (deep end). Pit or post hole within ST2
085		Dark reddish brown silty sand with gravel, small, medium and large stone inclusions. Fill of pit or post hole [084]
086		Circular shaped cut with steep sides onto a concave base measuring 0.41 m by 0.38 m by 0.13 m. Pit within ST3
087		Dark reddish brown silty sand with gravel inclusions. Fill of pit [086]
088		Oval shaped cut with moderate sides onto a rounded base, orientated E-W and measuring 0.4 m by 0.33 m by 0.15 m. Pit within ST2
089		Dark reddish brown silty sand with gravel and small stone inclusions measuring 0.4 m by 0.33 m by 0.15 m. Fill of pit [088]
090		Circular shaped cut with moderate sides onto a rounded base measuring 0.42 m diameter by 0.15 m. Pit within ST1
091		Dark reddish brown silty sand with gravel and charcoal fleck inclusions. Fill of pit [090]
092		Oval shaped cut with steep sides onto a concave base, orientated E-W and measuring 0.7 m by 0.6 m by 0.32 m. Post hole within ST2
093		Dark reddish brown silty sand with gravel, large stones and charcoal lump inclusions. Fill of post hole [092]
094		Circular shaped cut with gradual sides onto a rounded base measuring 0.37 m by 0.09 m. Pit or post hole within ST1
095		Dark reddish brown silty sand with gravel and charcoal fleck inclusions. Fill of pit or post hole [094]
096		Sub-circular shaped cut with moderate sides onto a flat base measuring 0.48 m by 0.48 m by 0.14 m. Pit within ST3
097		Dark reddish brown silty sand with gravel and occasional small rounded stone inclusions. Fill of pit [096]
098		Sub-circular shaped cut with moderate to steep sides onto a flat base measuring 1.08 m by 0.79 m by 0.24 m. Pit or post hole within ST2
099		Dark reddish brown silty sand with gravel and medium to large stone inclusions. Fill of pit or post hole [098]
100		Circular shaped cut with moderate sides onto a concave base measuring 0.39 m diameter by 0.14 m. Pit within ST2
101		Dark reddish brown silty sand with gravel, rounded stone and charcoal fleck inclusions. Fill of pit [101]
102		Oval shaped cut with gradual sides onto a concave base, orientated E-W and measuring 0.55 m

		by 0.5 m by 0.3 m Pit or post hole within ST1
103		Dark reddish brown silty sand with gravel, one large central stone and charcoal fleck inclusions. Fill of pit or post hole [102]
104		Oval shaped cut with steep sides onto flat base, orientated NW-SE and measuring 0.45 m by 0.31 m by 0.11 m Pit or post hole within ST2
105		Dark reddish brown silty sand with gravel and medium to large stone inclusions. Fill of pit or post hole [104]
106		Irregularly shaped cut with gradual sides onto an irregular base, orientated NW-SE and measuring 1.08 m by 0.61 m by 0.23 m. Pit within ST1
107		Dark reddish brown silty sand with gravel, large stone, charcoal and burnt bone inclusions. Fill of pit [106]
108		Circular shaped cut with moderate sides onto a concave base measuring 0.29 m diameter by 0.13 m. Conjoined to pit [106] at NW end. Post hole within ST1
109		Dark reddish brown silty sand with gravel and charcoal inclusions. Fill of post hole [108]
110		Oval shaped cut with gradual sloping sides onto a rounded base, orientated N-S and measuring 0.9 m by 0.6 m by 0.28 m. Pit within ST1
111		Dark reddish brown silty sand with gravel, occasional burnt bone, charcoal and fire cracked stone (large) inclusions. Fill of pit [110]
112		Sub-circular shaped cut with moderate sides onto a concave base measuring 0.4 m by 0.37 m by 0.1 m. Pit within ST2
113		Dark reddish brown silty sand with gravel, occasional medium stone and charcoal fleck inclusions. Fill of pit [112]
114		Oval shaped cut with moderate sides onto flattish base, orientated NW-SE and measuring 0.49 m by 0.3 m by 0.21 m. Pit or post hole within ST2
115		Dark reddish brown silty sand with gravel and medium stone inclusions. Fill of pit or post hole [114]
116		Circular shaped cut with moderate E side and steep W side onto a flat base measuring 0.38 m diameter by 0.14 m. Pit within ST3
117		Dark reddish brown silty sand with gravel inclusions. Fill of pit [116]
118		Circular shaped cut with very steep to vertical sides onto a rounded base measuring 0.5 m diameter by 0.4 m. Post hole within ST1
119		Dark reddish brown silty sand with gravel, small stone, large stone and charcoal fleck and lump inclusions. Fill of post hole [118]
120		Circular shaped cut with moderate sides onto rounded base measuring 0.39 m diameter by 0.12 m. Pit within ST1
121		Dark reddish brown silty sand with gravel and charcoal fleck inclusions. Fill of pit [120]
122		Circular shaped cut with moderate sides onto a rounded base measuring 0.33 m by 0.16 m. Pit or post hole within ST1
123		Dark reddish brown silty sand with gravel and charcoal fleck inclusions. Fill of pit or post hole [122]
124		Circular shaped cut with moderate sides onto a rounded base measuring 0.39 m by 0.12 m. Pit or post hole within ST1
125		Dark reddish brown silty sand with gravel and charcoal fleck inclusions. Fill of pit or post hole [124]
126		Curvilinear cut with steep sides onto a flat base with rounded terminals. Cuts Structure 2

Weirston Road, Kilwinning, North Ayrshire

		features and cut by ditch [193] and [157]. Measures 16.5 m by 0.6 to 0.8 m wide and 0.5 m deep. Enclosure ditch related to ditch [301]
127		Dark reddish brown silty sand with gravel, charcoal flecks, burnt bone and regularly spaced large stone inclusions. Upper and main fill of ditch [126]
128		Dark brown and charcoal rich sandy silt with burnt bone and gravel inclusions. Not seen in all sections of ditch. Approximately 0.8 m by 0.3 m by 0.1 m. Lower fill of ditch [126]
129		Oval shaped cut with truncated sides onto an undulating base measuring approximately 0.48 m by 0.33 m by 0.18 m. Truncated by pit [131] to the NW and by ditch [126] to the SE. Pit within ST2
130		Dark reddish brown silty sand with gravel and charcoal fleck inclusions. Fill of pit [129]
131		Oval shaped cut with moderate sides onto an undulating base, orientated NW-SE and measuring 0.45 m by 0.4 m by 0.15 m. Cuts fill of pit [129] to the NW. Pit within ST2
132		Dark reddish brown and black silty sand with gravel, medium stone and frequent charcoal inclusions. Fill of pit [131]
133		Oval shaped cut with gently sloping sides onto a rounded base measuring 0.37 m by 0.3 m by 0.09 m. Pit or post hole within ST1
134		Dark reddish brown silty sand with gravel, burnt bone and charcoal fleck inclusions. Fill of pit or post hole [133]
135		Sub-rectangular shaped cut with rounded corners, steep sides and an irregular base. Orientated NW-SE and measures 1.23 m by 0.64 m by 0.3 m. Positioned at end of ring groove for ST3. Structural pit for ST3
136		Dark greyish brown silty sand with burnt bone, charcoal, large stones and gravel inclusions. Fill of pit [135]
137		Oval shaped cut with gradual sides onto a flattish base, orientated NW-SE and measuring 0.72 m by 0.54 m by 0.27 m. Conjoined with post hole [139] at entrance to ST2. Post hole within ST2
138		Dark reddish brown silty sand with gravel, charcoal fleck and burnt bone inclusions. Fill of pit or post hole [137]
139		Sub-circular shaped cut with steep sides onto a flat base, orientated NW-SE and measures 0.7 m by 0.5 m by 0.2 m deep. Conjoined with post hole [137] at entrance to ST2. Post hole within ST2
140		Dark reddish brown silty sand with gravel, charcoal fleck and burnt bone inclusions. Fill of pit or post hole [139]
141		Oval shaped cut with steep sides onto a flat base, orientated N-S and measuring 0.6 m by 0.55 m by 0.5 m. Post hole within ST2
142		Dark reddish brown silty sand with gravel, burnt bone, large stones and charcoal lump inclusions. Fill of post hole [141]
143		Sub-rectangular shaped cut with rounded corners, steep sides and an irregular base. Orientated NW-SE and measures 1.1 m by 0.6 m by 0.26 m. Cut by terminal of ring groove [145] at its NW end but would be contemporary with it. Structural pit for ST3
144		Dark reddish and greyish brown silty sand with large stone, gravel, burnt bone and charcoal inclusions. Fill of pit [143]
145		Curvilinear cut with steep sides onto a rounded/flat base aligned SW-NE, with SW terminal cutting pit [143]. Also cuts ditch [161] but eradicated by ditch [157] to the NE. Measures 2.1 m by 0.32 m by 0.12 m. Ring Groove of ST3
146		Dark reddish brown silty sand with gravel, stone and charcoal fleck inclusions. Fill of Ring Groove [145]
147		Shallow linear cuts aligned NNW-SSE through parts of ST1 and to the western and southern edge of the excavation area. Between 0.2 and 0.8 m wide and 0.1 m deep.

		Modern agricultural furrows or plough scars
148		Dark grey sandy clay loam with frequent coal and occasional modern inclusions. Fill of [147]
149		Sub-circular shaped cut with steep sides onto a rounded base measuring 0.35 m by 0.27 m by 0.4 m. Post hole within ST1
150		Dark brown silty sand with gravel, burnt bone, large stones and charcoal fleck inclusions. Fill of post hole [149]
151		Sub-circular shaped cut with steep sides onto a rounded base measuring 0.89 m by 0.7 m by 0.25 m. Cut by post hole [149]. Fill of pit or post hole
152		Dark brown silty sand with gravel, burnt bone, large stones and charcoal fleck inclusions. Fill of pit [151]
153		Sub-rectangular shaped cut with rounded corners and steep sides onto a flat base, orientated SE-NW and measuring 1.4 m by 0.54 m by 0.2 m. Sits within entrance of ST2 and related to conjoined post holes [137] and [139]. Structural pit within ST2
154		Dark reddish brown silty sand with gravel, small stones, occasional large stones, burnt bone and charcoal fleck inclusions. Fill of structural pit [153]
155		Circular shaped cut with moderate sides onto a rounded base measuring 0.56 m diameter by 0.19 m. Truncates the edge of internal curvilinear [167]. Post hole within ST1
156		Dark reddish brown silty sand with gravel, large stone and charcoal fleck inclusions. Fill of post hole [155]
157		Curvilinear cut with gradual side onto an undulating base, orientated N to S with curve to the SE and back to the S to follow the slope base. Measures 70.6 m by 0.6 m by 0.2 m. Runs parallel to ditch [249]. Field boundary ditch of unknown date
158		Dark reddish brown silty sand with gravel and charcoal fleck inclusions. Fill of linear [157]
159		Curvilinear cut with gradual sides onto a concave base, orientated approximately E-W and terminating with rounded ends. Measures 3 m long by 0.3 m by 0.15 m within ST2. Cut by enclosure ditch [126]. Internal feature of ST2
160		Dark reddish brown silty sand with gravel, small to medium stones and charcoal fleck inclusions. Fill of internal feature [159]
161		Curvilinear cut with steep sides onto a flat/concave base, orientated E-W and curving to the S. May continue as ditch [436]. Measures 38 m by 0.25 m to 0.35 m by 0.09 m to 0.37 m. Cut by ditches [157], [249], [193] and by ring groove of ST3. Enclosure ditch related to ditch [436]
162		Dark reddish brown silty sand with gravel, medium to large stones, burnt bone and charcoal fleck inclusions. Fill of ditch [161]
163		Sub oval shaped cut with steep sides onto an uneven base, orientated NE-SW and measures 0.53 m by 0.3 m by 0.1 m. Pit within ST2
164		Dark reddish brown silty sand with gravel, small stone and charcoal fleck inclusions. Fill of pit [163]
165		Oval shaped cut with gently sloping sides onto a rounded base measuring 0.8 m by 0.75 m by 0.12 m. Pit within ST1
166		Dark reddish brown silty sand with gravel, burnt bone and charcoal fleck inclusions. Worked flints and pottery fragments including upturned base of pot. Pit within ST1
167		Curvilinear cut with moderate to gradual sides onto rounded base, orientated E-W and measuring 5 m by 0.32 to 0.39 m wide and 0.07 to 0.09 m deep. Internal feature of ST1
168		Dark reddish brown silty sand with gravel and charcoal fleck inclusions. Fill of internal feature [167]
169		Sub-oval shaped cut with very steep to vertical sides onto a flat base measuring 0.48 m by 0.41

Weirston Road, Kilwinning, North Ayrshire

		m by 0.2 m. Post hole within ST2
170		Dark reddish brown silty sand with gravel, small to large stone and charcoal fleck inclusions. Fill of post hole [169]
171		Curvilinear cut with rounded terminals, steep sides and flat base. Forms a semi circle with widest diameter of 12.6 m along WNW to ESE axis. Some cuts for individual post holes noted at the base of Slot D near the WNW terminal. Measures 20 m by 0.2 to 0.3 m wide by 0.1 to 0.3 m deep. Ring Groove of ST2
172		Dark reddish brown silty sand with gravel, medium stone and charcoal lump and fleck inclusions. Fill of Ring Groove [171]
173		Sub-circular shaped cut with steep sides onto an uneven base, orientated SE-NW and measures 0.5 m by 0.37 m by 0.31 m. Forms line of posts with [137], [139] to the SE and [237] to the NW. Post hole within ST2
174		Dark reddish brown silty sand with gravel, large stones, burnt bone and charcoal fleck inclusions. Fill of post hole [173]
175		Curvilinear cut with steep/shallow sides onto a concave base, orientated SW to NE from terminal and curving E where it is truncated by ditch [157]. Most likely the same as Ring Groove [145]. Measures 2.8 m by 0.21 m by 0.06 m. Ring Groove of ST3
176		Dark reddish brown silty sand with gravel inclusions. Fill of Ring Groove [175]
177		Sub-circular cut with moderate sides onto a rounded base measuring 0.47 m by 0.37 m by 0.09 m. Pit or post hole within ST1
178		Dark reddish brown silty sand with gravel inclusions. Fill of pit or post hole [177]
179		Circular shaped cut with gradual sides onto a rounded base measuring 0.25 m diameter by 0.05 m. Pit within ST1
180		Dark reddish brown silty sand with gravel and burnt bone inclusions. Fill of pit [179]
181		Sub-circular shaped cut with moderate sides onto a flat base, orientated N-S and measuring 0.49 m by 0.28 m by 0.06 m. Pit within ST1
182		Dark reddish brown silty sand with gravel, burnt bone and charcoal fleck inclusions. Fill of pit [181]
183		Circular shaped cut with moderate sides onto rounded base measuring 0.28 m diameter by 0.08 m. Pit within ST1
184		Dark reddish brown silty sand with gravel and burnt bone inclusions. Fill of pit [183]
185		Circular shaped cut with moderate to steep sides onto a concave base measuring 0.64 m by 0.62 m by 0.3 m. Post hole within ST2
186		Dark reddish brown silty sand with gravel, small, medium and large stones, burnt bone and charcoal fleck inclusions. Fill of post hole [185]
187		Curvilinear cut with moderate sides onto a concave base, orientated SW to NE from terminal with NE end truncated by ditch [193]. Measures 1.4 m by 0.3 m by 0.13 m. Forms an entrance with Ring Groove [175] measuring 2.2 m wide. Ring Groove of ST3
188		Dark reddish brown silty sand with gravel inclusions. Fill of Ring Groove [187]
189		Curvilinear cut with rounded terminals, steep sides onto a flattish base. Orientated E-W and measures 1.89 m by 0.22 m by 0.01 to 0.07 m. Internal feature of ST1
190		Dark reddish brown silty sand with gravel and charcoal fleck inclusions. Fill of internal feature [189]
191		Oval shaped cut with gently sloping sides onto a rounded base measuring 0.9 m by 0.7 m by 0.2 m. May be partially truncated by feature [189].

Weirston Road, Kilwinning, North Ayrshire

		Pit within ST1
192		Dark reddish brown silty sand with gravel, fire cracked stone, burnt bone and charcoal fleck inclusions. Several pottery sherd and flint flakes. Fill of pit [191]
193		Curvilinear cut with very steep sides onto a flat base. Related to ditch [295] and forms an entrance with it. Forms a semi-oval with terminals 38.6 m apart on a NW-SE axis. Measures 78 m long by 0.45 to 0.6 m wide and 0.5 to 0.72 m deep. Cuts through ST3 and ditches [436], [467], [161], [126], [384], and [301]. Post hole [279] is positioned at the NW terminal and post hole [531] at the SE. Enclosure ditch related to ditch [295]
194		Dark reddish brown silty sand with gravel, very large stones and charcoal fleck inclusions. Stone packing along the edge of the cut is visible in places, changing edge in different slots and occasionally on both side with a space through the centre of the ditch. Fill of enclosure ditch [193]
195		Dark reddish brown silty sand with gravel, fire cracked stone, burnt bone and charcoal fleck inclusions. May be same as [192]. Pottery sherds and possible stone tool. Fill of pit [191]
196		Compact pinkish grey clay with charcoal and stone inclusions. Only present within southern half of pit [191] measuring 0.2 m by 0.2 m by 0.06 m. Fill of pit [191]
197		Sub-circular shaped cut with moderate sides onto a rounded base. Only visible as an individual feature once excavated. Measures 0.67 m by 0.53 m by 0.32 m. Forms a sub-rectangular pit at the entrance to ST4 with post holes [213] and [214]. Post hole for ST4 entrance
198		Dark reddish brown silty sand with gravel, medium to large stones, burnt bone and charcoal fleck inclusions. Layer of charcoal rich sandy silt at base of post hole [213]. Fill of post holes [197], [213], and [214].
199		Curvilinear cut with steep sides with concave and pointed base. Several individual post holes noted within the ring groove. Forms an almost complete circle, with southern edge out with the excavation area. Terminal has post hole [243] at its end. Cut by post hole [197], [213], [214], [227], [257], and ring grooves [233] and [392]. Measures 36.3 m long by 0.19 m to 0.6 m wide by 0.09 m to 0.23 m deep. Encloses an area measuring 15.6 m diameter. Ring Groove of ST1
200		Dark reddish brown silty sand with gravel, burnt bone and charcoal fleck inclusions. Fill of Ring Groove [199]
201		Sub-circular shaped cut with steep sides onto a concave base measuring 0.45 m by 0.5 m by 0.22 m. Post hole within ST3
202		Dark reddish brown silty sand with gravel inclusions. Fill of post hole [201]
203		Curvilinear cut with rounded terminals, steep to vertical sides and flat, undulating base. Forms an arc 10 m wide between the terminals along a WNW to ESE axis. Measures 11.5 m long by 0.3 to 0.4 m wide and 0.16 m to 0.25 m deep. Ring Groove of ST3
204		Dark reddish brown silty sand with gravel, medium to large stones and charcoal fleck inclusions. Fill of Ring Groove [203]
205		Circular shaped cut with steep sides onto a rounded base measuring 0.5 m by 0.45 m by 0.4 m. Closely associated with pit [207]. Post hole within ST2
206		Dark reddish brown silty sand with gravel, large rounded stone and charcoal lump and fleck inclusions. Fill of post hole [205]
207		Oval shaped cut with gradual sides onto a flattish base, orientated N-S and measuring 0.65 m by 0.6 m by 0.2 m. Closely associated with [205]. Pit within ST2
208		Dark reddish brown silty sand with gravel, large stones and charcoal fleck inclusions. Fill of pit [207]
209		VOID
210		VOID
211		Oval shaped cut with gradual sides onto a flat base, orientated S-N and measuring 0.88 m by 0.24 m by 0.12 m. Cuts internal feature [235]

		Pit within ST2
212		Dark reddish brown silty sand with small and large stone inclusions. Fill of pit [211]
213		Sub-circular shaped cut with gradual sides onto a rounded base measuring 0.66 m b 0.5 m by 0.32 m. Filled by deposit [198] Post hole for ST4 entrance
214		Sub-circular shaped cut with moderate sides onto a rounded base. Contains post setting [271] with stake hole [215] at base. Post hole for ST4 entrance
215		Circular shaped cut with steep sides onto a pointed base. Measures 0.16 m b 0.12 m by 0.06 m in the base of post hole [214]. Stake hole for ST4 entrance
216		Dark reddish brown silty sand with gravel inclusions. Fill of stake hole [215]
217		Oval shaped cut with gently sloping sides onto a flattish base measuring 0.21 m by 0.36 m by 0.07 m. Pit within ST1
218		Dark reddish brown silty sand with gravel inclusions. Fill of pit [217]
219		Circular shaped cut with gently sloping sides onto a rounded base measuring 0.3 m diameter by 0.1 m. Pit or post hole within ST1
220		Dark reddish brown silty sand with gravel and charcoal fleck inclusions. Fill of pit or post hole [219]
221		Sub-circular shaped cut with gradual sides onto a flattish base measuring 0.5 m by 0.44 m. Cut by internal feature [235]. Pit within ST2
222		Dark reddish brown silty sand with gravel, large stones and charcoal fleck inclusions. Fill of pit [221]
223		Oval shaped cut with gradual sloping sides onto a flat base measuring 0.42 m by 0.28 m by 0.09 m. Pit within ST1
224		Dark reddish brown silty sand with gravel inclusions. Fill of pit [223]
225		VOID
226		VOID
227		Circular shaped cut with steep sides onto a concave and pointed base measuring 0.66 m diameter by 0.42 m. Post hole within ST1
228		Dark reddish brown silty sand with gravel, burnt bone and charcoal fleck inclusions. Fill of post hole [227]
229		Circular shaped cut with gradual sides onto a rounded base measuring 0.5 m diameter by 0.18 m. Pit next to ST1
230		Dark reddish brown silty sand with gravel inclusions. Fill of pit [229]
231		Oval shaped cut with gently sloping sides onto a rounded base measuring 0.5 m by 0.45 m by 0.12 m. Pit within ST1
232		Dark reddish brown silty sand with gravel, medium fire cracked stone and charcoal fleck inclusions. Fill of pit [231]
233		Curvilinear cut with rounded terminals, steep sides and flat base. Forms a semi circle with widest diameter of 13.44 m along WNW to ESE axis. Measures 16 m by 0.15 to 0.35 m wide and 0.03 m to 0.16 m deep. Forms circle with ring groove [392]. Post hole [251] at the SE entrance terminal. Ring Groove of ST4
234		Dark reddish brown silty sand with gravel, stone and charcoal fleck inclusions. Fill of Ring Groove [233]
235		Curvilinear cut with steep sides onto a rounded base measuring 8 m by 0.28 m to 0.32 m by 0.1 m to 0.17 m. Aligned E-W. Pot hole [237] at E terminal.

		Internal feature of ST2
236		Dark reddish brown silty sand with gravel and small to large stone inclusions. Fill of internal feature [235]
237		Sub-circular shaped cut with steep sides onto a flat base measuring 0.41 m diameter by 0.19 m. Post hole within ST2
238		Dark reddish brown silty sand with gravel and small to large stone inclusions. Fill of post hole [237]
239		Sub-rectangular shaped cut with moderate sides onto a sloping concave base measuring 1.39 m by 0.57 m by 0.24 m. Cuts ring groove [388]. Structural pit for ST4 entrance
240		Dark reddish brown silty sand with gravel and charcoal fleck inclusions. Fill of pit [239]
241		Circular shaped cut with steep sides onto a rounded base measuring 0.59 m diameter by 0.32 m. Cuts ring groove [233]. Post hole within ST1
242		Dark reddish brown silty sand with gravel and charcoal fleck inclusions. Fill of post hole [242]
243		Sub-circular cut with gradual sides and rounded base measuring 0.56 m by 0.13 m. Truncates ring groove [199]. Pit within ST1
244		Dark reddish brown silty sand with gravel and charcoal fleck inclusions. Fill of pit [243]
245		Oval shaped cut with steep sides onto a rounded base, orientated E-W and measuring 0.8 m by 0.6 m by 0.26 m. Pit within ST1
246		Dark reddish brown silty sand with gravel, stone, fire cracked stone and charcoal fleck inclusions. Fill of pit [245]
247		Linear cut with gradual sides onto an undulating base, orientated NNW-SSE and measuring 9.2 m by 0.6 m by 0.25 m. Located between ditches [157] and [249] at northern end of the excavation area. Ditch related to field boundary ditches [157 and [249]
248		Dark reddish brown silty sand with gravel and charcoal fleck inclusions. Fill of ditch [247]
249		Curvilinear cut with gradual sides onto an undulating base, orientated N to S with curve to the SE and back to the S to follow the slope base. Measures 70.6 m by 0.6 m by 0.3 m. Runs parallel to ditch [157]. Field boundary ditch of unknown date
250		Dark reddish brown silty sand with gravel and charcoal fleck inclusions. Fill of linear [249]
251		Circular shaped cut with steep sides onto a concave base measuring 0.45 m diameter by 0.24 m. Post hole within ST1
252		Dark reddish brown silty sand with gravel, stone and charcoal fleck inclusions. Fill of post hole [251]
253		Sub circular shaped cut with moderate sides onto a concave base measuring 0.7 m by 0.5 m by 0.15 m. Pit out with enclosures
254		Dark reddish brown silty sand with gravel inclusions. Fill of pit [253]
255		Sub circular shaped cut with steep sides onto a concave base measuring 0.5 m by 0.4 m by 0.1 m. Pit out with enclosures
256		Dark reddish brown silty sand with gravel inclusions. Fill of pit [255]
257		Circular shaped cut with moderate sides onto a rounded base measuring 0.57 m by 0.18 m. Post hole within ST1
258		Dark reddish and greyish brown silty sand with gravel and charcoal fleck inclusions. Fill of post hole [257]
259		Possible post setting within cut [257] with one stone set on edge providing setting of 0.33 m diameter.

		Post setting in post hole [257]
260		Circular shaped cut with gradual sides onto a concave base measuring 0.24 m diameter by 0.1 m. Post hole within ST1
261		Dark reddish brown silty sand with gravel and single large stone inclusions. Fill of post hole [260]
262		Curvilinear cut with rounded terminals, steep sides and concave/flat base. Forms a semi circle with widest diameter of 11.76 m along WNW to ESE axis. Measures 15 m long by 0.17 to 0.45 m wide by 0.09 to 0.35 m deep. Individual post hole positions notable in some parts. Ring Groove of ST2
263		Dark reddish brown silty sand with gravel, medium to large stone and charcoal fleck inclusions. Fill of Ring Groove [262]
264		Curvilinear cut with steep sides onto a concave base aligned S to N from eastern terminal the curving sharply to the W and curving sharply again to the S before joining into ditch [436]. Measures 56.3 m long by 0.35 m to 0.55 m wide by 0.16 m to 0.4 m deep. Enclosure ditch
265		Dark reddish brown silty sand with gravel, small to large stone and charcoal fleck inclusions. Fill of ditch [264]
266		Curvilinear cut with steep to vertical sides onto a concave/flat base. Aligned S to N from western terminal cutting ditch [193] and curving sharply to the E and then gradually curving SE to terminate on the eastern side of ditch [249]. Measures 35 m long b 0.4 m wide by 0.2 to 0.35 m deep. Enclosure ditch
267		Dark reddish brown silty sand with gravel, small to medium stone and charcoal fleck inclusions. Fill of ditch [266]
268		Sub-circular shaped cut with steep sides onto a concave base measuring 1 m by 0.95 m by 0.27 m. Filled by deposits [269] and [270]. Probable oven or fire pit out with enclosures
269		Very compact mid to light greyish orangey brown silty sand and gravel with charcoal flecks and occasional medium stones. 0.17 m thick. Upper fill of pit [268]
270		Black charcoal rich and organic silt with frequent fire cracked stones. 0.1 m thick. Basal fill of pit [268]
271		Post setting within post hole [214]
272		Curvilinear cut with steep sides onto a concave base. Aligned E to W from eastern terminal and curves to the N then the NW parallel to Ring Groove [392]. Measures 13.8 m by 0.18 to 0.49 m wide by 0.08 m to 0.26 m deep. External linear feature related to ST4
273		Dark reddish brown silty sand with gravel, burnt bone and charcoal fleck inclusions. Rusted iron nail found within the deposit which may indicate modern disturbance (??). Fill of linear [272]
274		VOID
275		VOID
276		VOID
277		Sub-circular shaped cut with steep sides onto a concave base measuring 0.4 m by 0.27 m b 0.07 m. Pit within ST2
278		Dark reddish brown silty sand with gravel and stone inclusions. Fill of pit [277]
279		Circular shaped cut with steep to moderate sides onto a flat base measuring 0.7 m diameter by 0.17 m. Post hole at terminal of ditch [193]
280		Dark reddish brown silty sand with three medium to large stones in the centre. Fill of post hole [279]
281		Sub-circular shaped cut with steep sides onto a flat base measuring 0.33 m by 0.31 m by 0.12 m. Pit out with enclosures
282		Dark reddish brown silty sand with gravel and single large stone inclusions. Fill of pit [281]
283		VOID

284		VOID
285		Circular shaped cut with very steep sides onto a rounded base measuring 0.45 m diameter by 0.14 m. Pit or post hole within ST1
286		Dark reddish brown silty sand with gravel, small stones and charcoal fleck inclusions. Fill of pit or post hole [285]
287		Oval shaped cut/scoop with moderate sides onto concave base measuring 0.25 m diameter by 0.05 m. Pit or disturbance within ST1
288		Dark reddish brown silty sand with gravel and charcoal fleck inclusions. Fill of pit [287]
289		Sub-circular shaped cut with steep to near vertical sides onto a concave base measuring 0.32 m diameter by 0.19 m. Post hole within enclosures
290		Dark reddish brown silty sand with gravel inclusions. Fill of post hole [289]
291		Circular shaped cut with steep sides onto a concave base, truncated by ditch [193] and measuring 0.4 m diameter. Pit within enclosures
292		Dark reddish brown silty sand with medium stone and charcoal fleck inclusions. Fill of pit [291]
293		Oval shaped cut with steep sides onto a flattish base, aligned E-W and measuring 0.45 m by 0.35 m by 0.08 m. Cut by [251] Pit within ST1
294		Dark reddish brown silty sand with gravel, small stone and charcoal fleck inclusions. Fill of pit [293]
295		Curvilinear cut with steep to vertical sides onto an irregular base. Related to ditch [193] and forms an entrance with it. Aligned NE to SW and curving to the SE when leaving the excavation area. Measures 18 m long by 0.5 to 0.7 m wide and 0.6 to 0.64 m deep. Post hole [317] is positioned at the terminal. Indications of packing stones along the edge of the cut in one slot. Enclosure ditch related to ditch [193]
296		Dark reddish brown silty sand with gravel, large to very large stone inclusions. Fill of ditch [295]
297		Sub-circular shaped cut with moderate sides onto concave base measuring 0.56 m by 0.24 m by 0.06 m. Cut by ditch [295]. Pit within enclosures
298		Dark reddish brown silty sand with small stone inclusions. Fill of pit [297]
299		Sub-rectangular shaped cut with rounded corners and steep sides onto a flat base, orientated NW-SE and measuring 2.1 m by 0.95 m by 0.16 m. Large pit out with enclosures to the E associated with [307]
300		Dark reddish brown silty sand with gravel, abundant large stone and charcoal fleck inclusions. Fill of pit [299]
301		Curvilinear cut with steep sides onto a concave/irregular base. Cuts Structure 2 features and cut by ditch [193] and [157]. Measures 23.5 m by 0.42 to 0.78 m wide and 0.28 m to 0.42 m deep. Enclosure ditch related to ditch [126]
302		Dark reddish brown silty sand with gravel, occasional medium stone, burnt bone and charcoal fleck inclusions. Fill of enclosure ditch [301]
303		Oval shaped cut with steep sides onto a rounded base measuring 0.2 m by 0.15 m by 0.06 m. Pit or post hole within ST1
304		Dark reddish brown silty sand with gravel, small stone, burnt bone and charcoal fleck inclusions. Fill of pit or post hole [303]
305		Oval shaped cut with gradual sides onto a concave base measuring 0.3 m by 0.23 m by 0.06 m. Pit or post hole within ST1
306		Dark reddish brown silty sand with gravel and charcoal fleck inclusions. Fill of pit or post hole [305]
307		Sub-rectangular shaped cut with rounded corners and steep sides onto a flat base, orientated NW-SE and measuring 1.95 m by 1.1 m by 0.3 m. Large pit out with enclosures to the E associated with [299]
308		Dark reddish brown silty sand with gravel, abundant large stone and charcoal fleck inclusions.

		Fill of pit [299]
309		Sub-circular shaped cut with steep sides onto an undulating base measuring 2.1 m by 2.2 m by 0.34 m. Possible quarry pit out with enclosures
310		Dark reddish brown silty sand with gravel and small stone inclusions. Fill of pit [309]
311		Circular shaped cut with gradual sides onto a rounded base measuring 0.26 m diameter by 0.06 m. Pit within ST1
312		Dark reddish brown silty sand with gravel and charcoal fleck inclusions. Fill of pit [311]
313		Circular shaped cut measuring approximately 0.2 m diameter. Pit within enclosures
314		Dark reddish brown silty sand with gravel inclusions. Fill of pit [313]
315		Sub-circular shaped cut with moderate sides onto a concave base measuring 0.26 m by 0.2 m by 0.09 m. Pit within enclosures
316		Dark reddish brown silty sand with one medium stone inclusion. Fill of pit [315]
317		Circular shaped cut with steep sides onto a flat base measuring 0.4 m diameter by 0.12 m. Post hole at terminal of ditch [295]
318		Dark reddish brown silty sand with small stone inclusions. Fill of post hole [317]
319		Sub circular shaped cut with steep sides onto a concave base measuring 0.3 m by 0.34 m b 0.1 m, Pit or post hole within enclosures
320		Dark reddish brown silty sand with gravel inclusions. Fill of pit or post hole [319]
321		Sub-circular shaped cut with moderate sides onto a concave base measuring 0.3 m by 0.27 m by 0.07 m. Pit or post hole within enclosures
322		Dark reddish brown silty sand with gravel inclusions. Fill of pit or post hole [321]
323		Sub-circular shaped cut with steep sides onto a concave base, orientated NE-SW and measuring 0.74 m by 0.48 m by 0.16 m. Cut by ditch [384]. Pit or post hole within ST2
324		Dark reddish brown silty sand with gravel, small to medium stone and charcoal fleck inclusions. Fill of pit or post hole [323]
325		Sub-circular shaped cut with steep sides onto a flat base, orientated NE-SW and measuring 0.68 m by 0.56 m by 0.28 m. Cut by ditch [384] Pit or post hole within ST2
326		Dark reddish brown silty sand with gravel, small to medium stone and charcoal fleck inclusions. Fill of pit or post hole [325]
327		VOID
328		VOID
329		Circular shaped cut with gradual sides onto a flat base measuring 0.3 m diameter by 0.09 m. Pit or post hole within ST1
330		Dark reddish brown silty sand with gravel, small stones, burnt bone and charcoal fleck inclusions. Fill of pit or post hole [327]
331		VOID
332		VOID
333		Oval shaped cut with gradual sides onto a flattish base, orientated E-W and measuring 0.7 m by 0.38 m by 0.15 m. Pit within enclosures
334		Dark reddish brown silty sand with gravel, small stone and charcoal fleck inclusions. Fill of pit [333]
335		Circular shaped cut with steep sides onto a rounded base measuring 0.35 m diameter by 0.3 m. Pit or post hole within enclosures

336		Dark reddish brown silty sand with gravel and charcoal fleck inclusions. Fill of pit or post hole [335]
337		Oval shaped cut with gradual sides onto a flattish base, orientated E-W and measuring 0.75 m by 0.55 m by 0.15 m Pit within enclosures
338		Dark reddish brown silty sand with gravel, medium stone and charcoal fleck inclusions. Fill of pit [337]
339		Circular shaped cut with gradual sides onto a concave base, orientated E-W and measuring 0.35 m diameter by 0.15 m. Pit within enclosures
340		Dark reddish brown silty sand with gravel, stone and charcoal fleck inclusions. Fill of pit [339]
341		Oval shaped cut with gradual sides onto a flat base, orientated E-W and measuring 0.7 m by 0.38 m by 0.17 m. Pit within enclosures
342		Dark reddish brown silty sand with gravel, medium stone and charcoal fleck inclusions. Fill of pit [341]
343		Oval shaped cut with vertical sides onto a rounded base, orientated E-W and measuring 0.39 m by 0.32 m by 0.29 m. Post hole out with ST1
344		Dark reddish brown silty sand with small stone, burnt bone and charcoal fleck inclusions. Fill of post hole [343]
345		Oval shaped cut with steep sides onto a rounded base measuring 0.25 m by 0.22 m by 0.08 m. Pit or post hole out with ST1
346		Dark reddish brown silty sand with small stone and charcoal fleck inclusions. Fill of pit or post hole [345]
347		Oval shaped cut with steep sides onto a rounded base measuring 0.31 m by 0.29 m by 0.16 m. Pit or post hole out with ST1
348		Dark reddish brown silty sand with burnt bone and charcoal fleck inclusions. Fill of pit or post hole [347]
349		Oval shaped cut with gradual sides onto a flat base, orientated E-W and measuring 0.55 m by 0.5 m by 0.25 m. Pit within enclosures
350		Dark reddish brown silty sand with occasional stone, burnt bone and charcoal lump inclusions. Fill of pit [349]
351		Oval shaped cut with gradual sides onto a flat base, orientated E-W and measuring 0.6 m by 0.4 m by 0.12 m. Pit within enclosures
352		Dark reddish brown silty sand with gravel and charcoal fleck inclusions. Fill of pit [351]
353		Oval shaped cut with moderate to steep sides onto a flat base measuring 0.65 m by 0.6 m by 0.31 m. Pit or post hole within enclosures
354		Dark reddish brown silty sand with gravel, large stone and charcoal fleck inclusions. Fill of pit or post hole [353]
355		Oval shaped cut with steep sides onto a concave base measuring 0.4 m by 0.35 m by 0.14 m. Pit within enclosures
356		Dark reddish brown silty sand with gravel and charcoal fleck inclusions. Fill of pit [355]
357		Oval shaped cut with gradual sides onto a concave base, orientated S-N and measuring 0.5 m by 0.38 m by 0.15 m. Pit within enclosures
358		Dark reddish brown silty sand with gravel and charcoal fleck inclusions. Fill of pit [357]
359		Rectangular shaped cut with steep sides onto a flat sloping base measuring 0.21 m by 0.19 m by 0.15 m. Cut into the edge of ring groove [199]. Post hole within ST1 (may be modern)
360		Very compact charcoal or wood. Fill of post hole [359]
361		Circular shaped cut with steep sides onto a flattish base measuring 0.52 m by 0.49 m by 0.25 m. Pit or post hole out with ST1

Weirston Road, Kilwinning, North Ayrshire

362		Dark reddish brown silty sand with large stone, burnt bone and charcoal fleck inclusions. Measures 0.12 m thick. Upper fill of pit or post hole [361]
363		Oval shaped cut with steep sides onto a flat base measuring 0.88 m by 0.4 m by 0.4 m. Post hole out with ST1
364		Dark reddish brown silty sand with small stone, large stone, burnt bone and charcoal fleck inclusions. Fill of post hole [363]
365		Sub-circular shaped cut with steep sides onto a flat base, orientated W-E and measuring 0.75 m (visible) by 0.64 m by 0.3 m. Post hole out with ST1
366		Dark reddish brown silty sand with gravel, small to large stone, burnt bone and charcoal fleck inclusions. Fill of post hole [365]
367		Oval shaped cut with gradual sides onto a flattish base measuring 0.35 m b 0.3 m by 0.18 m. Pit within enclosures
368		Dark reddish brown silty sand with gravel and charcoal fleck inclusions. Fill of pit [367]
369		Circular shaped cut with steep sides onto a flat base measuring 0.25 m diameter by 0.12 m. Pit within enclosures
370		Dark reddish brown silty sand with gravel, burnt bone, stone and charcoal fleck inclusions. Fill of pit [369]
371		Linear cut with near vertical sides onto flattish base, aligned NNE-SSW and measuring 0.5 (visible) by 0.25 m by 0.2 m. Terminates into post hole [374]. Partial ring groove
372		Dark reddish brown silty sand with stone inclusions. Fill of partial ring groove [371]
373		Dark reddish brown silty sand with gravel inclusions. Lower fill of pit or post hole [361]
374		Sub-circular shaped cut with steep sides onto a rounded base measuring 0.4 m by 0.37 m by 0.23 m. Cuts terminal of ring groove [371]. Post hole out with ST1
375		Dark reddish brown silty sand with gravel and charcoal fleck inclusions. Fill of post hole [374]
376		Curvilinear cut with rounded terminal and steep to vertical sides onto a flat base. Aligned S to N and forms entrance with ditch [384]. Measures 16 m long by 0.35 m to 0.5 m by 0.2 m by 0.35 m. Cut by ditch [295]. Enclosure ditch related to ditch [384]
377		Dark reddish brown silty sand with gravel inclusions. Fill of enclosure ditch [376]
378		Circular shaped cut with steep sides onto a flat base measuring 0.3 m diameter by 0.13 m. Pit out with ST1
379		Dark reddish brown silty sand with gravel inclusions. Fill of pit [378]
380		Circular shaped cut with steep sides onto a flattish base measuring 0.4 m diameter by 0.12 m. Pit out with ST1
381		Dark reddish brown silty sand with gravel inclusions. Fill of pit [381]
382		Sub-circular shaped cut with steep sides onto a concave base measuring 0.57 m by 0.55 m by 0.17 m. Pit within enclosures
383		Dark reddish brown silty sand with gravel and a single medium stone inclusion. Fill of pit [382]
384		Curvilinear cut with rounded terminals and steep sides onto a concave base measuring 35 m long by 0.2 m to 0.43 m wide by 0.24 m to 0.38 m deep. Enclosure ditch related to ditch [376]
385		Dark reddish brown silty sand with gravel, small to medium stone, burnt bone and charcoal inclusions. Fill of ditch [384]
386		Sub-circular shaped cut with very steep sides onto a flat base measuring 0.38 m by 0.31 m b .26 m.

Weirston Road, Kilwinning, North Ayrshire

		Pit out with ST1
387		Dark reddish brown silty sand with gravel and charcoal fleck inclusions. Fill of pit [386]
388		Curvilinear cut with truncated terminals and steep sides onto a flattish base measuring 12 m by 0.21 m to 0.25 m by 0.1 to 0.15 m. Cut by structural pit [239] and ring groove [233]. Ring Groove of ST5
389		Dark reddish brown silty sand with gravel and stone inclusions. Fill of Ring Groove [388]
390		Sub-circular shaped cut with steep sides onto a rounded base measuring 0.4 m by 0.37 m by 0.18 m. Post hole within ST1
391		Dark reddish brown silty sand with gravel and stone inclusions. Fill of post hole [390]
392		Curvilinear cut with rounded terminals, steep sides and flat base. Forms a semi circle with widest diameter of 14 m along WNW to ESE axis. Measures 22 m long by 0.26 m by 0.34 m wide by 0.1 m by 0.16 m deep. Ring Groove of ST4
393		Dark reddish brown silty sand with gravel and charcoal fleck inclusions. Fill of Ring Groove [392]
394		Linear cut with rounded terminals and steep sides onto a rounded base measuring 8 m long by 0.4 m wide. Aligned N-S. Ditch related to field boundary ditches [157 and [249]
395		Dark reddish brown silty sand with gravel and charcoal fleck inclusions. Fill of ditch [394]
396		Circular shaped cut with gently sloping sides onto a rounded base measuring 0.25 m diameter by 0.1 m. Pit within enclosures
397		Dark reddish brown silty sand with gravel and charcoal fleck inclusions. Fill of pit [396]
398		Sub oval shaped cut with steep sides onto a flat base measuring 0.64 m by 0.48 m by 0.14 m. Pit out with enclosures
399		Dark reddish brown silty sand with gravel and charcoal fleck inclusions. Fill of pit [398]
400		Circular shaped cut with steep sides onto a rounded base measuring 0.4 m diameter by 0.32 m. Pit within enclosures
401		Dark reddish brown silty sand with gravel and stone inclusions. Fill of pit [400]
402		Circular shaped cut with steep sides onto a rounded base measuring 0.2 m diameter by 0.1 m. Pit within enclosures
403		Dark reddish brown silty sand with gravel inclusions. Fill of pit [402]
404		Oval shaped cut with gradual to moderate sides onto a flat base measuring 0.83 m by 0.38 m by 0.1 m. Pit out with enclosures
405		Dark reddish brown silty sand with gravel inclusions. Fill of pit [404]
406		Sub-circular shaped cut with steep sides onto a flat base measuring 0.56 m by 0.43 m by 0.19 m. Pit out with enclosures
407		Dark reddish brown silty sand with gravel and charcoal fleck inclusions. Fill of pit [406]
408		Sub-circular shaped cut with gradual sides onto a flat base measuring 0.5 m by 0.57 m by 0.15 m. Pit out with enclosures
409		Dark reddish brown silty sand with gravel and charcoal fleck inclusions. Fill of pit [408]
410		Circular shaped cut with steep sides onto a rounded base. Pit within enclosures
411		Dark reddish brown silty sand with gravel and medium stone inclusions. Fill of pit [410]
412		Sub-circular shaped cut with steep sides onto a rounded base, orientated NE-SW and

		measuring 0.67 m by 0.44 m by 0.27 m. Post hole out with ST1
413		Dark reddish brown silty sand with gravel, large stone, burnt bone and charcoal fleck inclusions. Fill of post hole [412]
414		Sub-circular shaped cut with steep sides onto a concave base, orientated NE-SW and measuring 0.49 m by 0.53 m by 0.24 m. Post hole out with ST1
415		Dark reddish brown silty sand with gravel, large stone and charcoal fleck inclusions. Fill of post hole [414]
416		Curvilinear cut with rounded terminal, steep sides onto a flat base. Orientated S to N and measuring 23 m long by 0.5 m to 0.65 m wide by 0.36 m to 0.6 m deep. Enclosure ditch related to ditch [436] and [467]
417		Dark reddish brown silty sand with gravel and frequent medium to large stones some of which were aligned on either side of the base to form a central channel for posts. Fill of ditch [416]
418		Circular shaped cut with steep sides onto a flattish base measuring 0.42 m diameter by 0.19 m. Post hole at terminal of ditch [416]
419		Dark reddish brown silty sand with gravel and large stone inclusions. Fill of post hole [418]
420		Circular shaped cut with steep sides onto a rounded base measuring 0.32 m diameter by 0.14 m. Pit out with enclosures
421		Dark reddish brown silty sand with gravel and charcoal fleck inclusions. Fill of pit [420]
422		Circular shaped cut with gradual sides onto a rounded base measuring 0.64 m by 0.15 m. Pit out with enclosures
423		Dark reddish brown silty sand with gravel, burnt bone and charcoal fleck inclusions. Fill of pit [422]
424		Irregular shaped cut with irregular sides onto an uneven base that is pitted in the centre. Orientated NW-SE and measures 1.06 m by 0.2 m to 0.3 m wide by 0.03 to 0.1 m deep. Pit out with ST1
425		Dark reddish brown silty sand with gravel and charcoal fleck inclusions. Fill of pit [424]
426		Sub-circular shaped cut with steep sides onto a rounded base, orientated NE-SW. Pit or post hole out with ST1
427		Dark reddish brown silty sand with gravel, small to large stone, burnt bone and charcoal fleck inclusions. Fill of post hole [426]
428		Circular shaped cut with steep sides onto a concave base, orientated NW-SE and measuring 0.36 m by 0.29 m by 0.21 m. Pit or post hole out with ST1
429		Dark reddish brown silty sand with gravel, stone, burnt bone and charcoal fleck inclusions. Fill of post hole [428]
430		Circular shaped cut with steep sides onto a flat base measuring 0.6 m by 0.31 m. Pit within enclosures
431		Dark reddish brown silty sand with gravel, two large stones and charcoal fleck inclusions. Fill of pit [430]
432		Circular shaped cut with gradual sides onto a flat base measuring 0.93 m diameter by 0.17 m. Possible hearth within enclosures
433		Black, charcoal rich sandy silt. Lower fill of pit [432]
434		Circular shaped cut with steep sides onto a concave base measuring 0.3 m by 0.14 m. Pit within enclosures
435		Dark reddish brown silty sand with gravel and charcoal fleck inclusions. Fill of pit [434]
436		Curvilinear shaped cut with rounded terminal, steep sides onto a concave base, aligned SW to NE. Cut by ditch terminal [264], ditch [467] and post hole [455] Enclosure ditch related to ditch [416]
437		Dark reddish brown silty sand with small to large stone and charcoal fleck inclusions. Fill of ditch [436]
438		Circular shaped cut with steep sides onto a concave base measuring 0.25 m by 0.13 m.

		Pit within enclosures
439		Dark reddish brown silty sand with gravel inclusions. Fill of pit [438]
440		Dark reddish brown silty sand with gravel inclusions. Upper fill of hearth [432]
441		Curvilinear cut with steep sides onto concave base, truncated by ditch [416] and running out with excavation area to the south. Measures 5.6 m by 0.57 m by 0.37 m. Enclosure ditch related to ditch [416]
442		Dark reddish brown silty sand with gravel and frequent medium to large stone inclusions. Fill of ditch [441]
443		Medium to large stones set within fill [417] aligned along the sides of ditch base [416] leaving a 0.1 m space through the centre. Post setting within ditch [416]
444		VOID
445		Sub-circular shaped cut with steep sides onto a concave base, orientated E-W and measuring 0.64 m by 0.59 m by 0.29 m. Pit out with ST1
446		Dark reddish brown silty sand with small and large stone and charcoal fleck inclusions. Fill of pit [445]
447		Sub-circular shaped cut with steep sides onto a concave base, orientated W-E and measuring 0.68 m by 0.6 m by 0.14 m. Pit out with ST1
448		Dark reddish brown silty sand with small to large stone and charcoal fleck inclusions. Fill of pit [447]
449		Circular shaped cut with gradual sides onto a rounded base measuring 0.39 m by 0.1 m. Pit within enclosures
450		Dark reddish brown silty sand with gravel inclusions. Fill of pit [449]
451		Circular shaped cut with steep sides onto a rounded base measuring 0.24 m by 0.14 m. Pit within enclosures
452		Dark reddish brown silty sand with gravel inclusions. Fill of pit [451]
453		Circular shaped cut with steep sides onto a concave base measuring 0.33 m diameter by 0.31 m. Pit within enclosures
454		Dark reddish brown silty sand with gravel inclusions. Fill of pit [453]
455		Circular shaped cut with steep sides onto a concave base measuring 0.48 m diameter by 0.2 m. Post hole within enclosure ditch [436]
456		Dark reddish brown silty sand with gravel and one large central stone inclusions. Fill of post hole [455]
457		Circular shaped cut with steep sides onto a rounded base measuring 0.29 m by 0.2 m. Pit within enclosures
458		Dark reddish brown silty sand with gravel, burnt bone and charcoal fleck inclusions. Fill of pit [457]
459		Circular shaped cut with steep sides onto a rounded base measuring 0.3 m diameter by 0.11 m. Pit out with enclosures
460		Dark reddish brown silty sand with medium stone in centre and charcoal fleck inclusions. Fill of pit [459]
461		Sub-circular shaped cut with steep sides onto a rounded base measuring 0.45 m diameter by 0.11 m. Pit out with enclosures
462		Dark reddish brown silty sand with charcoal lump and fleck inclusions. Fill of pit [461]
463		Sub-circular shaped cut with steep sides onto a stepped and rounded base, orientated E-W and measuring 0.9 m by 0.47 m by 0.3 m. Pit out with enclosures
464		Dark reddish brown silty sand with medium and large stone inclusions. Fill of pit [463]
465		Circular shaped cut with gradual sides onto a flat base measuring 0.37 m diameter by 0.22 m. Post hole related to ditch [467]

466		Dark reddish brown silty sand with medium stone and charcoal fleck inclusions. Fill of post hole [465]
467		Linear cut with rounded terminals and steep sides onto a concave base aligned NE-SW and measuring 32.5 m by 0.61 m by 0.52 m. Cut by ditch [193] Enclosure ditch related to ditch [416]
468		Dark reddish brown silty sand with gravel, medium and large stone, burnt bone and charcoal fleck inclusions. Fill of ditch [467]
469		Sub-circular shaped cut with very steep sides onto a flat base, orientated E-W and measuring 0.52 m by 0.47 m by 0.44 m. Post hole out with ST1
470		Dark reddish brown silty sand with stone and charcoal fleck inclusions. Fill of post hole [469]
471		Sub-circular shaped cut with steep sides onto a flat base, orientated NE-SW measuring 1.05 m by 0.67 m by 0.22 m. Pit out with enclosures
472		Dark reddish brown silty sand with gravel and charcoal fleck inclusions. Fill of pit [471]
473		Circular shaped cut with steep sides onto a rounded base measuring 0.25 m diameter by 0.14 m. Pit out with enclosures
474		Dark reddish brown silty sand with gravel inclusions. Fill of pit [473]
475		Circular shaped cut with steep sides onto a flat base measuring 0.54 m diameter by 0.25 m. Pit within enclosures
476		Dark reddish brown silty sand. Fill of pit [475]
477		Circular shaped cut with vertical sides onto a flat base measuring 0.34 m diameter by 0.28 m. Cutting or cut by pit [498]. Post hole out with ST1
478		Dark reddish brown silty sand with gravel inclusions. Fill of post hole [477]
479		Circular shaped cut with vertical sides onto a flat base measuring 0.45 m diameter by 0.25 m. Post hole within enclosures
480		Dark reddish brown silty sand with gravel, small and medium stone, and charcoal fleck inclusions. Fill of post hole [479]
481		Circular shaped cut with steep sides onto a concave base measuring 0.5 m diameter by 0.3 m. Post hole within enclosures
482		Dark reddish brown silty sand with gravel, small and medium stone, and charcoal fleck inclusions. Fill of post hole [481]
483		Circular shaped cut with very steep sides onto a flat base measuring 0.3 m diameter by 0.15 m. Post hole within enclosures
484		Dark reddish brown silty sand with gravel, small and medium stone, and charcoal fleck inclusions. Fill of post hole [483]
485		Circular shaped cut with very steep sides onto a flat base measuring 0.4 m diameter by 0.2 m. Post hole within enclosures
486		Dark reddish brown silty sand with gravel, small and medium stone, and charcoal fleck inclusions. Fill of post hole [485]
487		Circular shaped cut with steep sides onto a concave base measuring 0.6 m by 0.35 m. Post hole within enclosures
488		Dark reddish brown silty sand with gravel, small and medium stone, and charcoal fleck inclusions. Fill of post hole [487]
489		Circular shaped cut with steep sides onto a flat base measuring 0.3 m diameter by 0.2 m. Post hole within enclosures
490		Dark reddish brown silty sand with gravel, small and medium stone, and charcoal fleck inclusions.

		Fill of post hole [489]
491		Sub-oval shaped cut with steep sides onto a flat base measuring 0.8 m by 0.6 m by 0.26 m. Pit within enclosures
492		Dark reddish brown silty sand with frequent large stone inclusions. Upper fill of pit [491]
493		Black, charcoal rich silty sand with gravel inclusions. Lower fill of pit [491]
494		Sub-circular shaped cut with steep sides onto an irregular base measuring 1.03 m by 0.58 m by 0.22 m. Pit within enclosures
495		Dark reddish brown silty sand with medium to large stone inclusions. Fill of pit [494]
496		Circular shaped cut with steep sides onto a rounded base measuring 0.55 m by 0.25 m. Pit within enclosures
497		Dark reddish brown silty sand with medium to large stone inclusions. Fill of pit [496]
498		Circular shaped cut with steep sides onto a flattish base measuring 0.25 m by 0.18 m. Pit out with ST1 related to [477]
499		Sub-circular shaped cut with gently sloping sides onto a rounded base measuring 0.43 m by 0.2 m by 0.06 m. Pit out with enclosures
500		Dark reddish brown silty sand with gravel and charcoal fleck inclusions. Fill of pit [499]
501		Circular shaped cut with gently sloping sides onto a rounded base measuring 0.4 m by 0.34 m by 0.14 m. Pit out with enclosures
502		Dark reddish brown silty sand with occasional small stone inclusions. Fill of pit [501]
503		Circular shaped cut with steep sides onto a concave base measuring 0.3 m diameter by 0.12 m. Pit within enclosures
504		Dark reddish brown silty sand with gravel inclusions. Fill of pit [503]
505		Sub-circular shaped cut with gradual sides onto a flat base measuring 0.74 m by 0.55 m by 0.19 m. Pit within enclosures
506		Dark reddish brown silty sand with medium stone inclusions. Fill of pit [505]
507		Sub-circular shaped cut with gradual sides and a flat base measuring 0.38 m by 0.35 m by 0.1 m. Pit within enclosures
508		Dark reddish brown silty sand with gravel inclusions. Fill of pit [507]
509		Sub-circular shaped cut with gradual sloping sides and rounded base measuring 0.47 m diameter by 0.06 m. Pit within enclosures
510		Dark reddish brown silty sand with gravel inclusions. Fill of pit [510]
511		Curvilinear cut with a rounded terminal, steep sides onto a concave base, and aligned approximately NE-SW, measuring 9.24 m by 0.45 m to 0.57 m wide by 0.23 m to 0.36 m deep. Enclosure ditch possibly related to ditch [161]
512		Dark reddish brown silty sand with small to large stone, burnt bone and charcoal fleck inclusions. Fill of ditch [511]
513		Oval shaped cut with moderate sides onto a concave base, orientated ESE-WNW, measuring 0.86 m by 0.5 m by 0.17 m. Cuts ditch [515] at terminal. Pit within enclosures
514		Dark reddish brown silty sand with small to medium stone and charcoal fleck inclusions. Fill of pit [513]
515		Curvilinear cut with rounded terminal and steep sides onto a flat/concave base. Terminal cuts into the edge of ditch [193]. Orientated from N to S then curving SW, measuring 15.4 m by 0.41 m to 0.55 m wide by 0.3 m to 0.45 m deep. Enclosure ditch related to ditch [193]

Weirston Road, Kilwinning, North Ayrshire

516		Dark reddish brown silty sand with frequent large stones representing packing material that has collapsed into the centre of the ditch but with some positioned along the W edge of the cut with space for posts along the E edge. Fill of ditch [515]
517		Sub-circular cut with steep side to WNW, with base and ESE truncated by ditch [193]. Measures 0.23 m (visible) by 0.65 m by 0.22 m (visible). Pit within enclosures
518		Dark reddish brown silty sand with occasional stone inclusions. Fill of pit [517]
519		Linear cut with steep sides onto concave base measuring 4 m by 0.28 m by 0.65 m wide by 0.29 m to 0.35 m deep. Orientated N-S, cut by ditch [193] to the N and by [515] the S. Enclosure ditch truncated by later ditches
520		Dark reddish brown silty sand with occasional small to medium stone inclusions. Fill of ditch [519]
521		Circular shaped cut with steep sides onto a rounded base measuring 0.52 m diameter by 0.28 m. Pit out with enclosures
522		Dark reddish brown silty sand with gravel inclusions. Fill of pit [521]
523		Circular shaped cut with gradual sides onto a rounded base measuring 0.29 m diameter by 0.06 m. Pit out with enclosures
524		Dark reddish brown silty sand with gravel inclusions. Fill of pit [523]
525		Circular shaped cut with gradual sides and flat base measuring 0.4 m diameter by 0.06 m. Pit out with enclosures
526		Dark reddish brown silty sand with gravel inclusions. Fill of pit [525]
527		Circular shaped cut with gradual sides onto a rounded base measuring 0.47 m by 0.09 m Pit out with enclosures
528		Dark reddish brown silty sand with gravel and charcoal fleck inclusions. Fill of pit [527]
529		Circular shaped cut with steep sides onto a rounded base measuring 0.61 m by 0.24 m. Pit out with ST1
530		Dark reddish brown silty sand with gravel and occasional stone inclusions. Fill of pit [529]
531		Sub-circular shaped cut with steep sides onto a flat base measuring 0.74 m by 0.5 m by 0.32 m. Positioned at end of ditch terminal of [193]. Post hole at terminal of ditch [193]
532		Dark reddish brown silty sand with gravel, very large stones and charcoal fleck inclusions. Fill of post hole [531]

Appendix 2: Photographic Register

Frame	Description	From	Date
1-10	Pre-ex views of excavation area	VAR	29/05/2017
11-19	Initial view of features revealed	VAR	29/05/2017
20-27	Views of features on site	VAR	31/05/2017
28-32	Views of features from SW corner	VAR	01/06/2017
33-35	Views of features from SW corner	VAR	01/06/2017
36-37	Section and plan of [007]	SE	05/06/2017
38-39	Section and plan of [009]	SE	05/06/2017
40-41	Section and plan of [011]	SW	05/06/2017
42	Section of (005)/[006]	SE	05/06/2017
43	Section of (013)/[014]	SE	05/06/2017
45	Section of [014]/[006]	SE	05/06/2017
46	Section of [017]	E	05/06/2017
47	Plan of [017]	W	05/06/2017
48	E facing section of (019)/[020]	E	05/06/2017
49	Plan of (019)/[020]	E	05/06/2017
50	Section of (021)/[022]	E	05/06/2017
51	Plan of (021)/[022]	E	05/06/2017
52	Section of (023)/[024]	S	05/06/2017
53	Plan of [024]	S	05/06/2017
54	E facing section of [015]	E	05/06/2017
55	Plan of [015]	E	05/06/2017
56	E facing section of [026]	E	05/06/2017
57	Plan of [026]	E	05/06/2017
58	Section of [027]	N	05/06/2017
59	Plan of [027]	S	05/06/2017
60	Section of [030]	W	05/06/2017
61	Plan of [030]	W	05/06/2017
62	S Facing section of [031]	S	05/06/2017
63	Plan of [031]	S	05/06/2017
64	Section of [033]	N	05/06/2017
65	Plan of [033]	S	05/06/2017
66	S facing section of [037]	S	05/06/2017
67	Plan of [037]	S	05/06/2017
68	Working shot of (039)/[040] and (041)/[042]	N	05/06/2017
69	Working shot of (039)/[040] showing stones	N	05/06/2017
70	Mid ex of [043]	S	06/06/2017
71	Section of (041)/[042]	N	06/06/2017
72	Section of upper part of (039)/[040]	N	06/06/2017
73	Section of (039)/[040] and (041)/[042]	N	06/06/2017
74	Plan of (039)/[040] and (041)/[042]	N	06/06/2017
75	Section of pit/posthole in Str2	S	06/06/2017
76	Plan of pit/posthole in Str2	S	06/06/2017
77	Section of [043] and [048]	S	06/06/2017
78	N Facing section of [050]	N	06/06/2017
79	Plan of [050]	W	06/06/2017
80	S-facing section of [043] and [048]	S	06/06/2017
81	Plan of [043] and [048]	N	06/06/2017
82	Lower packing stones in (039)/[040]	N	06/06/2017
83	E facing section of [052]	E	06/06/2017
84	General view of [052]	S	06/06/2017
85	S facing section of [054]	S	06/06/2017
86	Plan of [054]	S	06/06/2017

Weirston Road, Kilwinning, North Ayrshire

87	Plan during excavation of possible stone setting	SW	06/06/2017
88	Section of pit/posthole	SW	06/06/2017
89	Plan of pit/posthole	SW	06/06/2017
90	Section of [059]	N	06/06/2017
91	Plan of [059]	S	06/06/2017
92	Section of (063)/[064]	E	06/06/2017
93	Plan of (063)/[064]	E	06/06/2017
94	Section of [065]	N	06/06/2017
95	Plan of [065]	S	06/06/2017
96	NE facing section of [067] and [070]	NE	06/06/2017
97	Plan of [067] and [070]	NE	06/06/2017
98	Section of [072]	SW	06/06/2017
99	Plan of [072]	SW	06/06/2017
100	Section of (074)/[075]	N	06/06/2017
101	Plan of (074)/[075]	N	06/06/2017
102	Section of [076]	W	06/06/2017
103	Plan of [076]	E	06/06/2017
104	Section of [078]	W	06/06/2017
105	Plan of [078]	E	06/06/2017
106	Section of [080]	W	06/06/2017
107	Plan of [080]	E	06/06/2017
108	Section of [084]	SE	06/06/2017
109	Plan of [084]	SE	06/06/2017
110	Plan of (082)/[083]	E	06/06/2017
111	Section of (082)/[083]	E	06/06/2017
112	E facing section of [086]	E	07/06/2017
113	General view of [086]	N	07/06/2017
114	Section of [088]		07/06/2017
115	Plan of [088]		07/06/2017
116	E facing section of [090]	E	07/06/2017
117	Plan of [090]	E	07/06/2017
118	Pre ex view of [096]	SW	07/06/2017
119	Section of [092]	N	07/06/2017
120	Plan of [092]	S	07/06/2017
121	N facing section of [094]	N	07/06/2017
122	Plan of [094]	N	07/06/2017
123	Post ex of [096]	N	07/06/2017
124	Section of [098]	N	07/06/2017
125	Plan of [098]	N	07/06/2017
126	Section of [100]	N	07/06/2017
127	Plan of [100]	S	07/06/2017
128	Plan mid ex showing stones in (110)/[111]	W	07/06/2017
129	Plan of possible posthole [102]	NW	07/06/2017
130	Section of (110)/[111]	N	07/06/2017
131	Plan of (110)/[111]		07/06/2017
132	Section of [104]	NE	07/06/2017
133	Plan of [104]	NE	07/06/2017
134	NE facing section of irregular pit [106]	NE	07/06/2017
135	Plan of irregular pit [106]	NE	07/06/2017
136	N facing section of [108]		07/06/2017
137	Plan of [108]	N	07/06/2017
138	Section of [112]	N	07/06/2017
139	Plan of [112]	S	07/06/2017
140	Section of [114]	W	07/06/2017
141	Plan of [114]	W	07/06/2017

Weirston Road, Kilwinning, North Ayrshire

142	Section of [118]/(119)	SW	07/06/2017
143	Plan of [118]/(119)	SW	07/06/2017
144	Plan of [118]/(119) retake	SW	07/06/2017
145	NW-facing section of [116]	NW	07/06/2017
146	General view of [116]	NW	07/06/2017
147	N facing section of [120]	N	07/06/2017
148	Plan of [120]	N	07/06/2017
149	W facing section of [122]	W	07/06/2017
150	Plan of [122]	W	07/06/2017
151	E facing section of [124]	E	07/06/2017
152	Plan of [124]	E	07/06/2017
153	Section of [133]	S	07/06/2017
154	Plan of [133]	S	07/06/2017
155	Section of [126], [129] and [131]	N	07/06/2017
156	Section of [126]	S	07/06/2017
157	Plan of [126], [129] and [131]	S	07/06/2017
158-159	S facing section of [135]	S/SW	07/06/2017
160	General view of [135]	W	07/06/2017
161	Plan of pit [137]		07/06/2017
162	Section of [137]	SW	07/06/2017
163	Plan of [137]	SW	07/06/2017
164	Section of [139]	SW	07/06/2017
165	Plan of [139]	SW	07/06/2017
166	Mid ex of [141]	N	08/06/2017
167-168	Views of pit		08/06/2017
169	N-Facing section of [141]	N	08/06/2017
170	Plan of [141]	S	08/06/2017
171	SW facing section of [143] and [145]	SW	08/06/2017
172	General view of [143] and [145]	SE	08/06/2017
173	Section of [153]	NW	08/06/2017
174	Plan of [153]	NW	08/06/2017
175	NW facing section of [155]	NW	08/06/2017
176	Plan of [155]	NW	08/06/2017
177	Section of [159]	NW	08/06/2017
178	Section of [126]	W	08/06/2017
179	NW facing section of [145] and [157]	NW	08/06/2017
180	SW facing section of [157]	SW	08/06/2017
181	General view of [145], [143] and [157]	NE	08/06/2017
182	General view of [145], [143] and [157]	SW	08/06/2017
183	General view of [145], [143] and [157]	NW	08/06/2017
184	SE facing section of [149] and [151]	SE	08/06/2017
185	NW facing section of [145] with [157] to the NE and [161] to the SW	NW	08/06/2017
186	Section of [163]	NW	08/06/2017
187	Plan of [163]	NW	08/06/2017
188	Plan of [159] and [126]	N	08/06/2017
189	Plan of [159] and [126]	W	08/06/2017
190	Plan of [159] and [126]	S	08/06/2017
191	Section of [169]	NE	08/06/2017
192	Plan of [169]	NE	08/06/2017
193	Plan of [165]/(166)	W	08/06/2017
194	W facing section of [165]/(166)	W	08/06/2017
195	Section of [171] and [126]	N	08/06/2017
196	Section of [126] and [171]	W	08/06/2017
197	Plan of [126] and [171]	W	08/06/2017
198	Upturned pot base in [165]/(166)	S	08/06/2017

Weirston Road, Kilwinning, North Ayrshire

199	W facing section of Slot A (west terminus) [167]	W	08/06/2017
200	E facing section of Slot B [167]	E	09/06/2017
201	E facing section of Slot C (east terminus) [167]	E	09/06/2017
202	General shot of ring groove [167] and surroundings	N	09/06/2017
203	General shot of ring groove [167] from E terminus	E	09/06/2017
204	General shot of ring groove [167] from W terminus	W	09/06/2017
205	Plan of [167] west terminus	S	09/06/2017
206	Plan of [167] east terminus	S	09/06/2017
207	Post ex view of [165]	W	09/06/2017
208	SW facing section of [145]	SW	09/06/2017
209	General view of [145]	SW	09/06/2017
210	Plan of [173]	NE	09/06/2017
211	General shot of [173] and [137/139]	NE	09/06/2017
212	Plan of relationship between [155] and [167]	NW	09/06/2017
213	SW facing section of [175] – section 1	SW	09/06/2017
214	NE facing section of [175] – section 2	NE	09/06/2017
215	W facing section of [175] – section 3	W	09/06/2017
216	General view of [175]	E	09/06/2017
217	General view of [175]	W	09/06/2017
218	N facing section of [177]	N	09/06/2017
219	Plan of [177]	N	09/06/2017
220	N Facing section of [179]	N	09/06/2017
221	Plan of [179]	N	09/06/2017
222	Post ex of [147], [149] and [151]	SE	09/06/2017
223	E facing section of [181]	E	09/06/2017
224	Plan of [181]	E	09/06/2017
225	E facing section of [183]	E	09/06/2017
226	Plan of [183]	E	09/06/2017
227	Section of [185]	NW	09/06/2017
228	Plan of [185]	NW	09/06/2017
229	General view of [187]	SE	09/06/2017
230	General view of [187]	SW	09/06/2017
231	General view of [187]	NE	09/06/2017
232	Terminal of Slot A of [171]	S	09/06/2017
233	Terminal of Slot D of [171]	S	09/06/2017
234	Terminal of Slot D of [171]	S	09/06/2017
235	Terminal of Slot C of [171]	W	09/06/2017
236	Terminal of Slot B of [171]	N	09/06/2017
237	Terminal of Slot A of [171]	SE	09/06/2017
238-239	General view of [171]	SE	09/06/2017
240	Plan of [185], post ex	W	09/06/2017
241	Post ex of [185]	NE	09/06/2017
242	Post ex of [163]	NW	09/06/2017
243	Section of w terminal of [189]/(190)	W	09/06/2017
244	Plan view of pottery embedded on surface of [196]	S	09/06/2017
245	Plan view of clay deposit (196) in [191]	S	09/06/2017
246	W facing section of [197] and [199] at entrance to structure 1	W	09/06/2017
247	N facing section of [197] at entrance to structure 1	N	09/06/2017
248	General shot of [197] and [199] intersection	NW	09/06/2017
249	Plan of [197] truncating [199]	N	09/06/2017
250	General shot of entrance to structure 1	N	09/06/2017
251	Post ex view of [201]	E	12/06/2017
252	Section of [205] and [207]	E	12/06/2017
253	Plan of [205] and [207]	E	12/06/2017
254	Section of [189] and [191]	S	12/06/2017

Weirston Road, Kilwinning, North Ayrshire

255	Plan of [191] and [189]	S	12/06/2017
256	N facing section of [197]	W	12/06/2017
257	Plan of [197]	W	12/06/2017
258	Section of ditch [126] and linear [209]	S	12/06/2017
259	Plan and location of [126] and [209]	S	12/06/2017
260	Post ex of [191] and [189]	S	12/06/2017
261	Linear [189] and pit [191]	S	12/06/2017
262	Linear [189] and pit [191]	W	12/06/2017
263	E facing section of [211]	E	12/06/2017
264	General view of	E	12/06/2017
265	NW facing section of [203]	NW	12/06/2017
266	E facing section of [203]	E	12/06/2017
267	W facing section of [203]	W	12/06/2017
268	NE facing section of [203]	NE	12/06/2017
269	General view of [203]	E	12/06/2017
270	General view of [203]	ESE	12/06/2017
271	General view of [203]	W	12/06/2017
272	N facing section of [197], [213] and [214]	N	12/06/2017
273	General view of [197], [213] and [214]	N	12/06/2017
274	S facing section of [215]	S	12/06/2017
275	General view of [215]	S	12/06/2017
276	N facing section of [217] and [219]	N	12/06/2017
277	General view of [217] and [219]	N	12/06/2017
278	NW facing section of [221]	NW	12/06/2017
279	General view of [221]	NW	12/06/2017
280	SW facing section of [126]	SW	12/06/2017
281	General view of [126]	N	12/06/2017
282	General view of ditch [126] and [225]	NE	12/06/2017
283-284	Relationship slot between [126] and [225]	N	12/06/2017
285	W facing section of [223] and [229]	W	12/06/2017
286	General view of [223] and [151]	W	12/06/2017
287	View of large stone in ditch [193]	NE	12/06/2017
288	View of large stone in ditch [193]	NE	12/06/2017
289	S facing section of [227]	S	13/06/2017
290	General view of [227]	S	13/06/2017
291	S facing section of [229]	S	13/06/2017
292	General view of [229]	S	13/06/2017
293	General view of [227] and [229]	S	13/06/2017
294	S facing section of [126] and [157]	S	13/06/2017
295	General view of [126] and [157] relationship	N	13/06/2017
296	NE facing section of [231] and [233]	NE	13/06/2017
297	General view of [231] and [233]	NE	13/06/2017
298	NE facing section of [235]	NE	13/06/2017
299	General view of ring groove ditch [235]	NW	13/06/2017
300	General view of [237]	SW	13/06/2017
301	General view of [237]	SW	13/06/2017
302-311	General views of [126]	VAR	13/06/2017
312	NE facing section of [239]	NE	13/06/2017
313	General view of [239]	NE	13/06/2017
314	SW facing section of [241]	SW	13/06/2017
315	General view of [241] and [233]	SW	13/06/2017
316	ENE facing section of [161]	ESE	13/06/2017
317	W facing section of [161]	W	13/06/2017
318	ESE facing section of [161]	ESE	13/06/2017
319	WNW facing section of [161]	WNW	13/06/2017

Weirston Road, Kilwinning, North Ayrshire

320-322	General view of [161]	VAR	13/06/2017
323	SW facing section of [243]	SW	13/06/2017
324	General view of [243]	SW	13/06/2017
325	NW facing section of [235]	NW	13/06/2017
326	SW facing section of [241]	SW	13/06/2017
327	General view of [241]	SW	13/06/2017
328	W facing section of [235]	W	13/06/2017
329	General view of [235]	W	13/06/2017
330	SE facing section of [161]	SE	13/06/2017
331	NW facing section of [161]	NW	13/06/2017
332	S facing section of [161]	S	13/06/2017
333	N facing section of [161]	N	13/06/2017
334-335	General view of [161]	S	13/06/2017
336	General view of [161]	NW	13/06/2017
337	W facing section of [233] and [245]	W	13/06/2017
338	General view of [233] and [245]	W	13/06/2017
339	E facing section of [247]	E	13/06/2017
340	General view of [247]	E	13/06/2017
341	General view of [251] and [233]	N	13/06/2017
342	N facing section of [251]	N	13/06/2017
343	S facing section of [253] and [255]	S	14/06/2017
344	General view of [253] and [255]	S	14/06/2017
345	General view of [251] and [233]	W	14/06/2017
346	Detail view of [251] and [233]	W	14/06/2017
347	S facing section of [259]	S	14/06/2017
348	General view of [259]	S	14/06/2017
349	VOID	-	14/06/2017
350	SE facing section of [257] and [199]	SE	14/06/2017
351	General view of [257] and [199]	SE	14/06/2017
352	General view of [260]	E	14/06/2017
353	E facing section of [260]	E	14/06/2017
354	Relationship slot of [249] and [264]	-	14/06/2017
355	Relationship slot of [249] and [266]	-	14/06/2017
356	E facing section of [262]	E	14/06/2017
357	SE facing section of [262]	SE	14/06/2017
358	N facing section of [262]	N	14/06/2017
359	General view of [262]	E	14/06/2017
360	General view of [262]	E	14/06/2017
361	General view of [262]	W	14/06/2017
362	General view of [262]	W	14/06/2017
363	S facing section of [268]	S	14/06/2017
364	General view of [268]	S	14/06/2017
365	General view of [268]	W	14/06/2017
366	SE facing section of [257], [199] and [277]	SE	14/06/2017
367	General view of [257], [199] and [277]	SE	14/06/2017
368	E facing section of [274] and [193]	E	14/06/2017
369	W facing section of [193] and [274]	W	14/06/2017
370	General view of [193] and [274]	W	14/06/2017
371	General view of [193] and [274]	E	14/06/2017
372	NE facing section of [277]	NE	14/06/2017
373	General view of [277]	NE	14/06/2017
374	General view of [268] and [270] mid excavation	W	14/06/2017
375	General view of relationship between [193] and [264]	NE	14/06/2017
376	General view of relationship between [193] and [264]	N	14/06/2017
377	General view of relationship between [193] and [264]	W	14/06/2017

Weirston Road, Kilwinning, North Ayrshire

378	W facing section of [268] and [270]	W	14/06/2017
379	General view of [268] and [270]	W	14/06/2017
380	General view of [233] and [283] relationship	NW	14/06/2017
381	NE facing section of [233] and [283]	NE	14/06/2017
382	WNW facing section of [279] and [193]	WNW	14/06/2017
383	General view of [279] and [193]	NW	14/06/2017
384	General view of [279] and [193]	NE	14/06/2017
385	NW facing section of [281]	NW	14/06/2017
386	General view of [281]	NW	14/06/2017
387	N facing section of [285] and [287]	N	14/06/2017
388	General view of [285], [283] and [233]	N	14/06/2017
389	E facing section of [157], [247]	E	14/06/2017
390	W facing section of [157], [247]	W	14/06/2017
391	E facing section of [157], [247]]	E	14/06/2017
392	W facing section of [157], [249]	W	14/06/2017
393	E facing section of [157], [247]	E	14/06/2017
394	General view of [157], [247]	E	14/06/2017
395	SE facing section of [199]	SE	14/06/2017
396	SW facing section of [199]	SW	14/06/2017
397	NE facing section of [291]	NE	14/06/2017
398	General view of [291] and [193]	SE	14/06/2017
399	N facing section of [289]	N	14/06/2017
400	General view of [289]	N	14/06/2017
401	General view of [291]	NE	14/06/2017
402	General view of [297]	N	15/06/2017
403	N facing section of [297]	N	15/06/2017
404	SW facing section of [233] and [199]	N	15/06/2017
405	W facing section of [299]	W	15/06/2017
406	General view of [299]	E	15/06/2017
407	E facing section of [301]	E	15/06/2017
408	NW facing section of [301]	NW	15/06/2017
409	N facing section of [301]	N	15/06/2017
410	General view of [301]	E	15/06/2017
411	General view of [301]	W	15/06/2017
412	General view of [301]	SE	15/06/2017
413	General view of [301]	N	15/06/2017
414	General view of [303] and [305]	NE	15/06/2017
415	NE facing section of [303] and [305]	NE	15/06/2017
416	W facing section of [309]	W	15/06/2017
417	General view of [309]	W	15/06/2017
418	VOID	-	15/06/2017
419	W facing section of [307]	W	15/06/2017
420	General view of [307]	E	15/06/2017
421	W facing section of [315]	W	15/06/2017
422	General view of [315]	W	15/06/2017
423	General view of [295]	S	15/06/2017
424	NW facing section of [295]	SE	15/06/2017
425	General view of [295]	SE	15/06/2017
426	General view of [233]	NE	15/06/2017
427	General view of [233]	NE	15/06/2017
428	NW facing section of [313]	NW	15/06/2017
429	General view of [313]	-	15/06/2017
430	General view of [295] and [317]	NE	15/06/2017
431	NE facing section of [295]	NE	15/06/2017
432	General view of [295]	E	15/06/2017

Weirston Road, Kilwinning, North Ayrshire

433	General view of [317]	SW	15/06/2017
434	General view of [311]	S	15/06/2017
435	S facing section of [311]	S	15/06/2017
436	SE facing section of [323]	SE	15/06/2017
437	N facing section of [319]	N	15/06/2017
438	General view of [319]	N	15/06/2017
439	N facing section of [321]	N	15/06/2017
440	General view of [321]	N	15/06/2017
441	N facing section of [331]	N	15/06/2017
442	General view of [331]	N	15/06/2017
443	General view of [329]	S	15/06/2017
444	S facing section of [329]	S	15/06/2017
445	SE facing section of [323]	SE	15/06/2017
446	General view of [323]	SE	15/06/2017
447	NW facing section of [325]	NW	15/06/2017
448	General view of [325]	NW	15/06/2017
449	General view of [233]	NW	15/06/2017
450	General view of [233]	W	15/06/2017
451	General view of [233]	SW	15/06/2017
452	General view of [233]	NE	15/06/2017
453	SW facing section of [193]	SW	15/06/2017
454	General view of [193] and [295] terminals	SW	15/06/2017
455	General view of entrance between [193] and [295]	NW	15/06/2017
456	General view of enclosure ditch relationship	W	15/06/2017
457	General view of enclosure ditch relationship	N	15/06/2017
458-475	General views of site from pole	VAR	15/06/2017
476	NE facing section of [199]	NE	16/06/2017
477	E facing section of [199]	E	16/06/2017
478	E facing section of [199]	E	16/06/2017
479	NE facing section of [199]	NE	16/06/2017
480	N facing section of [199]	N	16/06/2017
481	N facing section of [199]	NW	16/06/2017
482	General view of [199]	S	16/06/2017
483	General view of [199]	SE	16/06/2017
484	General view of [199]	NE	16/06/2017
485	General view of [199]	N	16/06/2017
486	General view of [199]	S	16/06/2017
487	General view of [199]	W	16/06/2017
488	General view of [199]	E	16/06/2017
489	General view of [333]	W	16/06/2017
490	NW facing section of [335]	NW	16/06/2017
491	General view of [335]	S	16/06/2017
492	S facing section of [337]	S	16/06/2017
493	General view of [337]	N	16/06/2017
494	E facing section of [339]	E	16/06/2017
495	General view of [339]	W	16/06/2017
496	S facing section of [341]	S	16/06/2017
497	General view of [341]	N	16/06/2017
498	General view of [343]	S	16/06/2017
499	S facing section of [343]	S	16/06/2017
500	General view of [345]	E	16/06/2017
501	E facing section of [345]	E	16/06/2017
502	Working shot of [363]	E	16/06/2017
503	S facing section of [349]	S	16/06/2017
504	General view of [349]	N	16/06/2017

Weirston Road, Kilwinning, North Ayrshire

505	SW facing section of [351]	SW	16/06/2017
506	General view of [351]	S	16/06/2017
507	General view of [353]	W	16/06/2017
508	W facing section of [355]	W	16/06/2017
509	General view of [355]	E	16/06/2017
510	S facing section of [357]	S	16/06/2017
511	General view of [357]	N	16/06/2017
512	General view of [359]	E	16/06/2017
513	General view of [359] within [199]	N	16/06/2017
514	E facing section of [363]	E	16/06/2017
515	General view of [363]	SE	16/06/2017
516	General view of [347]	NE	16/06/2017
517	NE facing section of [347]	NE	16/06/2017
518	NE facing section of [365]	NE	16/06/2017
519	General view of [365]	NE	16/06/2017
520	General view of [361], [374] and [371]	VAR	16/06/2017
521	General view of [361], [374] and [371]	VAR	16/06/2017
522	General view of [361], [374] and [371]	VAR	16/06/2017
523	General view of [361], [374] and [371]	VAR	16/06/2017
524	General view of [361], [374] and [371]	VAR	16/06/2017
525	General view of [376]	S	19/06/2017
526	General view of [376]	S	19/06/2017
527	S facing section of [376]	N	19/06/2017
528	General view of [376] and intersection with [295]	S	19/06/2017
529	N facing section of [371]	N	19/06/2017
530	General view of [371], [374], and [361]	E	19/06/2017
531	E facing section of [378]	E	19/06/2017
532	General view of [378]	S	19/06/2017
533	NW facing section of [380]	NW	19/06/2017
534	General view of [380]	NW	19/06/2017
535	SE facing section of [272]	SE	19/06/2017
536	N facing section of [272]	N	19/06/2017
537	NW facing section of [272]	NW	19/06/2017
538	General view of [272]	SE	19/06/2017
539	General view of [272]	NW	19/06/2017
540	General view of [376]	N	19/06/2017
541	General view of [376]	NE	19/06/2017
542	N facing section of [376]	NE	19/06/2017
543	General view of [376]	NNE	19/06/2017
544	General view of [376]	NNE	19/06/2017
545	SSE facing section of [157] and [249]	SSE	19/06/2017
546	General view of [157] and [249]	SSE	19/06/2017
547	NE facing section of [386]	NE	19/06/2017
548	General view of [386]	NE	19/06/2017
549	SE facing section of [382]	SE	19/06/2017
550	General view of [382]	NW	19/06/2017
551	NE facing section of [388] and [390]	NE	19/06/2017
552	General view of [388] and [390]	NE	19/06/2017
553	S facing section of [157] and [249]	S	19/06/2017
554	General view of [157] and [249]	S	19/06/2017
555	SW facing section of [388]	SW	20/06/2017
556	NE facing section of [388]	NE	20/06/2017
557	General view of [388]	NE	20/06/2017
558	SW facing section of [388]	SW	20/06/2017
559	General view of [388]	N	20/06/2017

Weirston Road, Kilwinning, North Ayrshire

560	W facing section of [388]	W	20/06/2017
561	SE facing section of [388]	SE	20/06/2017
562	General view of [388]	N	20/06/2017
563	N facing section of [388]	N	20/06/2017
564	General view of [388]	N	20/06/2017
565	S facing section of [157]	S	20/06/2017
566	S facing section of [249]	S	20/06/2017
567	General view of [157] and [249]	S	20/06/2017
568	SE facing section of [392]	SE	20/06/2017
569	NW facing section of [392]	NW	20/06/2017
570	W facing section of [392]	W	20/06/2017
571	SW facing section of [392]	SW	20/06/2017
572	General view of [392]	SE	20/06/2017
573	General view of [392]	SW	20/06/2017
574	General view of [392]	N	20/06/2017
575	S facing section of [384]	S	20/06/2017
576	S facing section of [384]	S	20/06/2017
577	S facing section of [384]	S	20/06/2017
578	E facing section of [193] and [274]	E	20/06/2017
579	W facing section of [193] and [274]	W	20/06/2017
580	N facing section of [193], [157], [249] and [394]	N	20/06/2017
581	S facing section of [193], [157], [249] and [394]	S	20/06/2017
582	General view of [193], [157], [249] and [394]	E	20/06/2017
583	S facing section of [396]	S	20/06/2017
584	General view of [396]	S	20/06/2017
585	S facing section of [264]	S	20/06/2017
586	General view of [264]	S	20/06/2017
587	E facing section of [394]	E	20/06/2017
588	General view of [394]	E	20/06/2017
589	S facing section of [398]	S	20/06/2017
590	General view of [398]	S	20/06/2017
591	S facing section of [384]	S	20/06/2017
592	SW facing section of [400]	SW	20/06/2017
593	General view of [400]	N	20/06/2017
594	E facing section of [402]	E	20/06/2017
595	General view of [402]	N	20/06/2017
596	E facing section of [394]	E	20/06/2017
597	General view of [394]	E	20/06/2017
598	W facing section of [404]	W	20/06/2017
599	General view of [404]	W	20/06/2017
600	NW facing section of [406]	NW	20/06/2017
601	General view of [406]	NW	20/06/2017
602	NW facing section of [408]	NW	20/06/2017
603	General view of [408]	NW	20/06/2017
604	S facing section of [384]	S	20/06/2017
605	NW facing section of [384]	NW	20/06/2017
606	SW facing section of [384]	SW	20/06/2017
607	General view of [264]	S	20/06/2017
608	General view of [264]	S	20/06/2017
609	N facing section of [410]	N	20/06/2017
610	General view of [410]	N	20/06/2017
611	SE facing section of [193] and [274]	SE	20/06/2017
612	NW facing section of [193]	NW	20/06/2017
613	General view of [274]	NW	20/06/2017
614	General view of [266]	S	20/06/2017

Weirston Road, Kilwinning, North Ayrshire

615	General view of [266]	N	20/06/2017
616	General view of [264]	N	20/06/2017
617	General view of [264]	NE	20/06/2017
618	NE facing section of [412]	NE	20/06/2017
619	General view of [412]	SE	20/06/2017
620	SW facing section of [414]	SW	20/06/2017
621	General view of [414]	SW	20/06/2017
622-623	General view of [418]	VAR	21/06/2017
624	General view of [416]	NE	21/06/2017
625	NE facing section of [416]	NE	21/06/2017
626	SW facing section of [420]	SW	21/06/2017
627	General view of [420]	SW	21/06/2017
628	SW facing section of [422]	SW	21/06/2017
629	General view of [422]	SW	21/06/2017
630	General view of [264]	S	21/06/2017
631	General view of [264]	S	21/06/2017
632	SW facing section of [424]	SW	21/06/2017
633	General view of [424]	SW	21/06/2017
634	General view of [266]	S	21/06/2017
635	E facing section of [266]	E	21/06/2017
636	W facing section of [266]	W	21/06/2017
637	SE facing section of [426]	SE	21/06/2017
638	General view of [426]	SE	21/06/2017
639	SE facing section of [428]	SE	21/06/2017
640	General view of [428]	SE	21/06/2017
641	General view of [443] and [441] showing packing in [443]	E	21/06/2017
642	General view of [443] and [441] showing packing in [443]	W	21/06/2017
643	General view of [443] and [441] showing packing in [443]	N	21/06/2017
644	General view of [264]	SSW	21/06/2017
645	General view of [264]	SSW	21/06/2017
646	General view of [430] and [432]	E	21/06/2017
647	N facing section of [430]	N	21/06/2017
648	General view of [430]	N	21/06/2017
649	General view of [432]	N	21/06/2017
650	SE facing section of [434]	SE	21/06/2017
651	General view of [434]	SE	21/06/2017
652	General view of [441] and [443] showing packing stones	N	21/06/2017
653	General view of [441] and [443] showing packing stones	W	21/06/2017
654	General view of [441] and [443] showing packing stones	E	21/06/2017
655	General view of [441] and [443] showing packing stones	S	21/06/2017
656	General view of relationship slot for [266] and [193]	NW	21/06/2017
657	General view of relationship slot for [266] and [193]	W	21/06/2017
658	N facing section of [432]	N	21/06/2017
659	General view of [432]	N	21/06/2017
660	General view of [432] and [430]	N	21/06/2017
661	SE facing section of [438]	SE	21/06/2017
662	General view of [438] and [434]	SE	21/06/2017
663	General view of unknown features	-	21/06/2017
664	General view of unknown features	-	21/06/2017
665	General view of unknown features	-	21/06/2017
666	General view of unknown features	-	21/06/2017
667	N facing section of [441] and [443]	N	21/06/2017
668	General view of [416], [441] and [443]	N	21/06/2017
669	General view of [416], [441] and [443]	E	21/06/2017
670	S facing section of [441] and [443]	S	21/06/2017

Weirston Road, Kilwinning, North Ayrshire

671	General view of [441] and [443]	S	21/06/2017
672	General view of [441] and [443]	W	21/06/2017
673	S facing section of [441] and [443]	S	21/06/2017
674	S facing section of [441] and [443]	S	21/06/2017
675	N facing section of [441] and [443]	N	21/06/2017
676	General view of [436]	E	21/06/2017
677	General view of [436]	S	21/06/2017
678	General view of [266]	NW	21/06/2017
679	General view of [266]	NE	21/06/2017
680	SW facing section of [266]	SW	21/06/2017
681	ENE facing section of [449]	ENE	21/06/2017
682	General view of [449]	ENE	21/06/2017
683	NE facing section of [451]	NE	21/06/2017
684	General view of [451]	NE	21/06/2017
685	N facing section of [453]	N	21/06/2017
686	General view of [453]	N	21/06/2017
687	SW facing section of [436]	SW	21/06/2017
688	General view of [436] and [455]	SW	21/06/2017
689	General view of [436] and [455]	NW	21/06/2017
690	E facing section of [457]	E	22/06/2017
691	General view of [457]	E	22/06/2017
692	SE facing section of [459]	SE	22/06/2017
693	General view of [459]	-	22/06/2017
694	E facing section of [461]	E	22/06/2017
695	General view of [461]	-	22/06/2017
696	N facing section of [463]	N	22/06/2017
697	General view of [463]	-	22/06/2017
698	General view of [441] and [416]	N	22/06/2017
699	N facing section of [441]	N	22/06/2017
700	N facing section of [416]	N	22/06/2017
701	NE facing section of [301]	NE	22/06/2017
702	General view of [301]	NE	22/06/2017
703	SE facing section of [465]	SE	22/06/2017
704	General view of [465]	NW	22/06/2017
705	SW facing section of [467]	SW	22/06/2017
706	General view of [436], [467] and [465]	SW	22/06/2017
707	General view of [436], [467] and [465]	NE	22/06/2017
708	General view of [414] and [465] entrance	SW	22/06/2017
709	General view of [414] and [465]	E	22/06/2017
710	E facing section of [469]	E	22/06/2017
711	General view of [469]	E	22/06/2017
712	General view of unknown features relationship	-	22/06/2017
713	Section of [447]	-	22/06/2017
714	General view of [447]	-	22/06/2017
715	N facing section of [477]	N	22/06/2017
716	General view of [477]	N	22/06/2017
717	NE facing section of [475]	NE	22/06/2017
718	General view of [475]	NE	22/06/2017
719	S facing section of [491]	S	22/06/2017
720	General view of [491]	S	22/06/2017
721	N facing section of [416]/[443] showing beam slot	S	22/06/2017
722	N facing section of [416]/[443] showing beam slot	S	22/06/2017
723	E facing section of [494] and [496]	E	22/06/2017
724	General view of [494] and [496]	E	22/06/2017
725-726	N facing section of [479]	N	22/06/2017

Weirton Road, Kilwinning, North Ayrshire

727-728	E facing section of [481]	E	22/06/2017
729-730	W facing section of [483]	N	22/06/2017
731-732	W facing section of [485]	N	22/06/2017
733-734	E facing section of [487]	E	22/06/2017
735-736	E facing section of [489]	E	22/06/2017
737-739	General view of [479], [481], [483], [485], and [487]	N	22/06/2017
740	NW facing section of [473]	NW	22/06/2017
741	General view of [473]	NW	22/06/2017
742	N facing section of [499]	N	22/06/2017
743	General view of [499]	N	22/06/2017
744	NW facing section of [501]	NW	22/06/2017
745	General view of [501]	NW	22/06/2017
746	SE facing section of [503]	SE	22/06/2017
747	General view of [503]	SE	22/06/2017
748	W facing section of [505]	W	23/06/2017
749	General view of [505]	W	23/06/2017
750-753	General view of packing stones in [416]	VAR	23/06/2017
754	NE facing section of [507]	NE	23/06/2017
755	General view of [507]	NE	23/06/2017
756	NNW facing section of [509]	NNW	23/06/2017
757	General view of [509]	NNW	23/06/2017
758	SW facing section of [511]	SW	23/06/2017
759	SW facing section of [384]	SW	23/06/2017
760	SW facing section of [384], [515] and [511]	SW	23/06/2017
761	General view of stones in-situ within ditches	SW	23/06/2017
762	NNE facing section of [513], [515], [193] and [517]	NNE	23/06/2017
763	General view of [517]	WNW	23/06/2017
764	General view of [513]	ESE	23/06/2017
765	General view of [515]	NNE	23/06/2017
766	NE facing section of [521] and [523]	NE	23/06/2017
767	General view of [521] and [523]	NE	23/06/2017
768	E facing section of [525]	E	23/06/2017
769	General view of [525]	E	23/06/2017
770	E facing section of [527]	E	23/06/2017
771	General view of [527]	E	23/06/2017
772	General view of [511]	SW	23/06/2017
773	General view of [511]	NE	23/06/2017
774	SW facing section of [511]	SW	23/06/2017
775	SW facing section of [384]	SW	23/06/2017
776	SW facing section of [515], [519] and [511]	SW	23/06/2017
777	General view of [193] terminus	SW	26/06/2017
778	General view of [193] terminus	NE	26/06/2017
779	General view of [193] terminus	SW	26/06/2017
780-874	General view of Structures 1-3	VAR	26/06/2017
875	SW facing section of [529]	SW	26/06/2017
876	General view of [529]	SW	26/06/2017
877	N facing section of [515]	N	26/06/2017
878	N facing section of [519] and [193]	N	26/06/2017
879	General view of [515] and [193]	N	26/06/2017
880	SE facing section of [519]	SE	26/06/2017
881	General view of [193]	NE	26/06/2017
882-888	General post ex view of Structure 1	VAR	27/06/2017
889-893	General post ex view of Structure 2	VAR	27/06/2017
894-895	General post ex view of Structure 1	N	27/06/2017
896-899	General post ex view of Structure 2	VAR	27/06/2017

Weirston Road, Kilwinning, North Ayrshire

900-905	General post ex view of Structure 3	VAR	27/06/2017
---------	-------------------------------------	-----	------------

Appendix 3: Drawing Register

Drawing No.	Details	Scale
1	SE facing section of [007]	1:10
2	SE facing section of [009]	1:10
3	SW facing section of [011]	1:10
4	SE facing section of [006]	1:10
5	S facing section of [014]	1:10
6	E facing section of [017]	1:10
7	E facing section of [015]	1:10
8	E facing section of [026]	1:10
9	N facing section of [024]	1:10
10	W facing section of [035]	1:10
11	E facing section of [020]	1:10
12	E facing section of [022]	1:10
13	S facing section of [031]	1:10
14	S facing section of [037]	1:10
15	NW facing section of [027]	1:10
16	N facing section of [033]	1:10
17	SW facing section of [043] and [048]	1:10
18	N facing section of [046]	1:10
19	NW facing section of [056]	1:10
20	E facing section of [052]	1:10
21	N facing section of [065]	1:10
22	N facing section of [059]	1:10
23	W facing section of [076]	1:10
24	W facing section of [078]	1:10
25	W facing section of [050]	1:10
26	S facing section of [054]	1:10
27	NE facing section of [070] and [067]	1:10
28	E facing section of [086]	1:10
29	N facing section of [042] and [040]	1:10
30	E facing section of [064]	1:10
31	N facing section of [079]	1:10
32	E facing section of [083]	1:10
33	SW facing section of [096]	1:10
34	W facing section of [084]	1:10
35	N facing section of [098]	1:10
36	N facing section of [110]	1:10
37	NE facing section of [104]	1:10
38	E facing section of [090]	1:10

Weirton Road, Kilwinning, North Ayrshire

39	N facing section of [094]	1:10
40	NE facing section of [106]	1:10
41	N facing section of [108]	1:10
42	NW facing section of [114]	1:10
43	SW facing section of [119]	1:10
44	W facing section of [133]	1:10
45	N facing section of [116]	1:10
46	W facing section of [080]	1:10
47	NW facing section of [088]	1:10
48	N facing section of [092]	1:10
49	N facing section of [100]	1:10
50	Profile of [102]	1:10
51	N facing section of [112]	1:10
52	N facing section of [126], [129] and [131]	1:10
53	S facing section of [126]	1:10
54	N facing section of [120]	1:10
55	W facing section of [122]	1:10
56	E facing section of [124]	1:10
57	SW facing section of [137] and [139]	1:10
58	Plan of [147], [149] and [151] mid excavation	1:20
59	SW facing section of [147], [149] and [151]	1:10
60	SW facing section of [143] and [145]	1:10
61	Relationship section of ditches [159] and [129]	1:10
62	NE facing section of [153]	1:10
63	N facing section of [141]	1:10
64	SW facing section of [137] and [139]	1:10
65	NW facing section of [164]	1:10
66	NE facing section of [169]	1:10
67	NW facing section of [155]	1:10
68	W facing section of [167]	1:10
69	E facing section of [167]	1:10
70	E facing section of [167]	1:10
71	SW facing section of [145]	1:10
72	SW facing section of [175]	1:10
73	NE facing section of [173]	1:10
74	NW facing section of [185]	1:10
75	N facing section of [177]	1:10
76	N facing section of [179]	1:10
77	W facing section of [181]	1:10
78	W facing section of [183]	1:10

Weirston Road, Kilwinning, North Ayrshire

79	SW facing section of [187]	1:10
80	Relationship section between ditches [171] and [126]	1:10
81	S facing section of [171]	1:10
82	N facing section of [171]	1:10
83	SW facing section of [171]	1:10
84	S facing section of [171]	1:10
85	N facing section of [072]	1:10
86	Relationship section between [145], [157] and [161]	1:10
87	W facing section of [159]	1:10
88	N facing section of [201]	1:10
89	SW facing section of [135]	1:10
90	Plan of pit [135]	1:20
91	E facing section of [205] and [207]	1:10
92	S facing section of [126] and [209]	1:10
93	W facing section of [165]	1:10
94	W facing section of [189]	1:10
95	S facing section of [189] and [191]	1:10
96	E facing section of [211]	1:10
97	SW facing section of [126]	1:10
98	Plan of post setting [214] and pits [197] and [213]	1:10
99	N facing section of [214] and pits [197] and [213]	1:10
100	S facing section of [215]	1:10
101	W facing section of [223] and [191]	1:10
102	S facing section of [126] and [157]	1:10
103	NW facing section of [221]	1:10
104	NE facing section of [235]	1:10
105	Profile of [237]	1:10
106	NE facing section of [231] and [233]	1:10
107	SW facing section of [241]	1:10
108	W facing section of [235]	1:10
109	W facing section of [245] and [233]	1:10
110	WNW facing section of [161]	1:10
111	NW facing section of [161]	1:10
112	N facing section of [161]	1:10
113	S facing section of [227] and [229]	1:10
114	NE facing section of [239]	1:10
115	SW facing section of [243]	1:10
116	N facing section of [217] and [219]	1:10
117	SE facing section of [203]	1:10
118	E facing section of [203]	1:10

Weirston Road, Kilwinning, North Ayrshire

119	E facing section of [262]	1:10
120	SE facing section of [262]	1:10
121	NE facing section of [262]	1:10
122	NE facing section of [277]	1:10
123	WNW facing section of [279] and [193]	1:10
124	NW facing section of [289]	1:10
125	S facing section of [253]	1:10
126	NW facing section of [282]	1:10
127	W facing section of [268]	1:10
128	Mid excavation plan of [268]	1:20
129	SE facing section of [199]	1:10
130	SW facing section of [199]	1:10
131	W facing section of [249], [247], and [157]	1:10
132	SE facing section of [249] and [157]	1:10
133	SE facing section of [249] and [157]	1:10
134	SE facing section of [249], [247], and [157]	1:10
135	E facing section of [260]	1:10
136	N facing section of [251] and [293]	1:10
137	N facing section of [233] and [199]	1:10
138	NW facing section of [233] and [283]	1:10
139	NE facing section of [285], [287] and [283]	1:10
140	N facing section of [297]	1:10
141	E facing section of [301]	1:10
142	NW facing section of [301]	1:10
143	NE facing section of [301]	1:10
144	NE facing section of [303] and [305]	1:10
145	W facing section of [309]	1:10
146	W facing section of [307]	1:10
147	W facing section of [299]	1:10
148	NW facing section of [313]	1:10
149	N facing section of [319]	1:10
150	N facing section of [321]	1:10
151	NE facing section of [295]	1:10
152	Profile of [317]	1:10
153	W facing section of [315]	1:10
154	NW facing section of [295]	1:10
155	SW facing section of [311]	1:10
156	S facing section of [329]	1:10
157	VOID	1:10
158	VOID	1:10

Weirston Road, Kilwinning, North Ayrshire

159	VOID	1:10
160	NE facing section of [291]	1:10
161	SE facing section of [257], [199] and [272]	1:10
162	SE facing section of [247]	1:10
163	S facing section of [343]	1:10
164	NW facing section of [199]	1:10
165	E facing section of [199]	1:10
166	E facing section of [199]	1:10
167	NE facing section of [199]	1:10
168	N facing section of [199]	1:10
169	NW facing section of [199]	1:10
170	E facing section of [345]	1:10
171	Profile of [333]	1:10
172	NW facing section of [335]	1:10
173	S facing section of [337]	1:10
174	E facing section of [339]	1:10
175	S facing section of [341]	1:10
176	NE facing section of [347]	1:10
177	VOID	1:10
178	E facing section of [323]	1:10
179	NW facing section of [325]	1:10
180	NE facing section of [363]	1:10
181	NE facing section of [365]	1:10
182	S facing section of [349]	1:10
183	SE facing section of [351]	1:10
184	Profile of [184]	1:10
185	E facing section of [355]	1:10
186	S facing section of [357]	1:10
187	E facing section of [369]	1:10
188	S facing section of [367]	1:10
189	Profile of [374] and [361]	1:10
190	N facing section of [371]	1:10
191	E facing section of [378]	1:10
192	SSE facing section of [157] and [249]	1:10
193	N facing section of [376]	1:10
194	S facing section of [376]	1:10
195	Profile of terminal end of ditch [376]	1:10
196	N facing section of [376]	1:10
197	SE facing section of [382]	1:10
198	SE facing section of [272]	1:10

Weirton Road, Kilwinning, North Ayrshire

199	N facing section of [272]	1:10
200	NW facing section of [272]	1:10
201	NE facing section of [386]	1:10
202	NW facing section of [380]	1:10
203	NE facing section of [388] and [390]	1:10
204	S facing section of [157] and [249]	1:10
205	SE facing section of [392]	1:10
206	NW facing section of [392]	1:10
207	W facing section of [392]	1:10
208	SW facing section of [392]	1:10
209	SW facing section of [388]	1:10
210	NE facing section of [388]	1:10
211	SW facing section of [388]	1:10
212	E facing section of [388]	1:10
213	S facing section of [388]	1:10
214	N facing section of [388]	1:10
215	S facing section of [193], [157], [249] and [394]	1:10
216	S facing section of [396]	1:10
217	SW facing section of [400]	1:10
218	E facing section of [402]	1:10
219	E facing section of [394]	1:10
220	SW facing section of [384]	1:10
221	W facing section of [384]	1:10
222	NW facing section of [384]	1:10
223	N facing section of [410]	1:10
224	W facing section of [404]	1:10
225	NW facing section of [406]	1:10
226	NW facing section of [408]	1:10
227	NE facing section of [412]	1:10
228	SW facing section of [414]	1:10
229	SW facing section of [420]	1:10
230	SW facing section of [422]	1:10
231	SE facing section of [434]	1:10
232	S facing section of [264]	1:10
233	SE facing section of [264]	1:10
234	SW facing section of [264]	1:10
235	S facing section of [264]	1:10
236	SSW facing section of [264]	1:10
237	SSE facing section of [398]	1:10
238	N facing section of [430] and [432]	1:10

Weirston Road, Kilwinning, North Ayrshire

239	SE facing section of [438]	1:10
240	SW facing section of [424]	1:10
241	SE facing section of [426]	1:10
242	SE facing section of [428]	1:10
243	SW facing section of [266]	1:10
244	E facing section of [266]	1:10
245	S facing section of [416]	1:10
246	N facing section of [441] and [416]	1:10
247	SW facing section of [436]	1:10
248	NW facing section of [436] and [455]	1:10
249	ENE facing section of [449]	1:10
250	NE facing section of [451]	1:10
251	N facing section of [453]	1:10
252	NW facing section of [359]	1:10
253	E facing section of [457]	1:10
254	SE facing section of [459]	1:10
255	E facing section of [461]	1:10
256	N facing section of [463]	1:10
257	NE facing section of [301]	1:10
258	S facing section of [445]	1:10
259	S facing section of [447]	1:10
260	SW facing section of [467]	1:10
261	SE facing section of [465]	1:10
262	WSW facing section of [161], [193] and [467]	1:10
263	E facing section of [193] and [467]	1:10
264	NW facing section of [471]	1:10
265	NE facing section of [475]	1:10
266	NE facing section of [498] and [477]	1:10
267	N facing section of [473]	1:10
268	N facing section of [499]	1:10
269	NW facing section of [501]	1:10
270	S facing section of [491]	1:10
271	SE facing section of [503]	1:10
272	E facing section of [494] and [496]	1:10
273	N facing section of [479]	1:10
274	E facing section of [481]	1:10
275	N facing section of [483]	1:10
276	N facing section of [485]	1:10
277	E facing section of [487]	1:10
278	E facing section of [489]	1:10

Weirston Road, Kilwinning, North Ayrshire

279	W facing section of [505]	1:10
280	Slot C of [416] showing beam slot	1:20
281	Slot C of [416] showing beam slot – overlay	1:20
282	NE facing section of [507]	1:10
283	NNW facing section of [509]	1:10
284	NNE facing section of [515], [193] and [517]	1:10
285	E facing section of [469]	1:10
286	Profile of ditch [511]	1:10
287	SE facing section of [511], [519] and [515]	1:10
288	SW facing section of [511], [384] and [519]	1:10
289	NE facing section of [521] and [523]	1:10
290	E facing section of [525]	1:10
291	E facing section of [527]	1:10
292	SW facing section of [529]	1:10
293	NE facing section of [515]	1:10
294	N facing section of [193], [519] and [384]	1:10
295	WNW facing section of [193]	1:10
296	SSW facing section of [193]	1:10
297	N facing section of [193]	1:10
298	Plan of ditch [193]	1:20
299	SE facing section of [193] and [531]	1:10
300	S facing section of [157] and [249]	1:10
301	N facing section of [416]	1:10
302	Profile of ditch [416] and E facing section of [418]	1:10
303	SW facing section of [519]	1:10

Appendix 4: Samples Register

Context No.	No. of tubs/bags
006	1
008	1
010	1
012	1
013	1
016	1
018	1
019	1
021	1
023	1
026	1
028	1
029	1
032	1
034	1
038	1
039	1
041	1
045	1
046	1
049	1
050	1
053	1
055	1
057	1
060	1
061	1
063	1
066	1
068	1
069	1
071	1
073	1
074	1
078	1
079	1
081	1
082	1

Weirston Road, Kilwinning, North Ayrshire

085	1
087	1
089	1
091	1
092	1
095	1
097	1
099	1
100	1
103	1
105	1
107	1
109	1
111	1
113	1
115	1
117	1
119	1
121	1
123	1
125	1
127	1
128	1
132	1
134	1
136	1
138	1
142	1
144	1
146	1
150	1
152	1
154	1
156	1
158	2
159	2
160	1
162	2
164	1
166	3

Weirston Road, Kilwinning, North Ayrshire

168	2
170	1
172	2
174	1
176	2
178	1
180	1
182	1
184	1
186	1
188	1
190	1
191	1
194	2
195	1
196	1
198	1
200	2
202	1
204	2
206	1
212	1
218	1
220	1
222	1
228	1
230	1
232	1
234	2
236	2
240	1
242	1
244	1
246	1
250	2
252	1
254	1
258	1
261	1
263	2

Weirston Road, Kilwinning, North Ayrshire

265	2
267	2
269	1
270	2
273	2
278	1
280	1
282	1
286	1
288	1
290	1
292	1
294	1
296	2
298	1
300	1
302	2
304	1
306	1
308	1
310	2
312	1
314	1
316	1
320	1
322	1
324	1
326	1
328	1
330	1
334	1
336	1
338	1
340	1
342	1
344	1
346	1
348	1
350	1
352	1

Weirston Road, Kilwinning, North Ayrshire

354	1
356	1
358	1
362	1
364	1
366	1
368	1
370	1
372	1
373	1
375	1
377	2
379	1
381	1
383	1
385	2
387	1
389	2
391	1
393	2
395	2
397	1
399	1
401	1
403	1
405	1
407	1
409	1
411	1
413	1
415	1
417	2
419	1
421	1
423	1
425	1
427	1
429	1
431	1
433	2

Weirston Road, Kilwinning, North Ayrshire

435	1
437	2
439	1
442	1
446	1
448	1
450	1
452	1
454	1
456	1
458	1
460	1
462	1
464	2
466	1
468	2
470	1
472	2
474	1
476	1
478	1
480	1
482	1
484	1
486	1
488	1
490	1
492	1
493	1
495	1
497	1
500	1
502	1
504	1
506	1
508	1
510	1
512	2
516	1
522	1

Weirston Road, Kilwinning, North Ayrshire

524	1
526	1
528	1
530	1

Appendix 5: Finds Register

Finds No.	Context No.	Description
1	039	Daub fragment
2	166	4 x prehistoric pottery fragments
3	164	2 x worked flint
4	166	Prehistoric pot base
5	166	8 x worked flint fragments including Horseshoe scraper
6	186	Worked flint
7	127	Daub fragment
8	127	Prehistoric pottery fragment
9	192	3 x worked flint flakes
10	195	6 x prehistoric pottery fragments
11	192	17 x prehistoric pottery fragments
12	195	Possible stone tool
13	246	Possible worked shale
14	269	Quartz pebble and worked flint
15	200	Burnt bone fragment
16	302	Quartz
17	296	Worked flint
18	310	Quartz and worked flint
19	273	Iron nail
20	250	Worked flint
21	028	Daub fragment
22	028	2 x quartz
23	029	Prehistoric pottery fragment
24	119	Prehistoric pottery fragment
25	119	Large lump of charcoal
26	051	Large lump of charcoal
27	240	Probable rubbing stone
28	208	2 x large lumps of iron slag

Appendix 6: 'Discovery and Excavation in Scotland' Report

LOCAL AUTHORITY:	North Ayrshire Council
PROJECT TITLE/SITE NAME:	Weirston Road, Kilwinning
PROJECT CODE:	23756
PARISH:	Kilwinning
NAME OF CONTRIBUTOR:	Kevin Paton
NAME OF ORGANISATION:	AOC Archaeology Group
TYPE(S) OF PROJECT:	Excavation
NMRS NO(S):	N/A
SITE/MONUMENT TYPE(S):	Prehistoric settlement
SIGNIFICANT FINDS:	Neolithic flint tools and pottery
NGR (2 letters, 6 figures)	NS 31320 43163
START DATE (this season)	29 th May 2017
END DATE (this season)	27 th June 2017
PREVIOUS WORK (inc DES)	Evaluation March 2017
MAIN (NARRATIVE) DESCRIPTION: (May include information from other fields)	<p>An archaeological excavation was undertaken by AOC Archaeology Group following the discovery of significant archaeology during a previous evaluation at Weirston Road, Kilwinning, North Ayrshire.</p> <p>The excavation consisted of the monitored topsoil strip of a 3800 m² area in the western half of the development site. At least four ring groove structures and several palisaded enclosure ditches were revealed within the excavation area.</p> <p>The structures range in size from 12 m to 16 m in diameter, with two clearly distinctive styles in use. The main entrances to the structures all face south east with three of the structures consisting of an opposing north west entrance as well. This distinctive style of ring groove structure is comparable with other structures in the west of Scotland that date to the Iron Age.</p> <p>Along with the structures and enclosures there were over 150 other pit and/or post hole features within and out with the structures and enclosures. Two of these pits produced several flint flakes, a horseshoe scraper and pottery fragments that have comparisons with the Late Neolithic period. Possible iron slag was also found within a pit that could indicate industrial processes taking place near to the site.</p>
PROPOSED FUTURE WORK:	Post excavation analysis and reporting
CAPTION(S) FOR ILLUSTRATIONS:	N/A
SPONSOR OR FUNDING	Mast Architects

Weirston Road, Kilwinning, North Ayrshire

BODY:	
ADDRESS OF MAIN CONTRIBUTOR:	AOC Archaeology Group Edgefield Road Industrial Estate Loanhead, Midlothian, EH20 9SY
EMAIL ADDRESS:	admin@aocarchaeology.com
ARCHIVE LOCATION	Archive to be deposited in NRHE



AOC Archaeology Group, Edgefield Industrial Estate, Edgefield Road, Loanhead EH20 9SY
tel: 0131 440 3593 | fax: 0131 440 3422 | e-mail: edinburgh@aocarchaeology.com

www.aocarchaeology.com