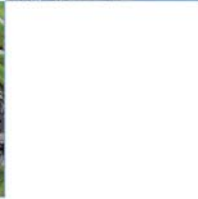


Aberlady, East Lothian: Archaeological Evaluation Data Structure Report

AOC 23882
18th July 2017



AOC
Archaeology
Group



ARCHAEOLOGY

HERITAGE

CONSERVATION

Aberlady, East Lothian: Archaeological Evaluation Data Structure Report

On Behalf of: Cruden Homes
Baberton House
Westburn Avenue
Edinburgh
EH14 3HN

National Grid Reference (NGR): NT 4616 7951

AOC Project No: 23882

Planning Application No: 16/00552/PM

OASIS No: aocarcha1-290511

Prepared by: Kevin Paton

Date of Fieldwork: 12th – 17th July 2017

Date of Report: 18th July 2017

This document has been prepared in accordance with AOC standard operating procedures.

Author: Kevin Paton

Date: 18th July 2017

Approved by: Lindsay Dunbar

Date: 20th July 2017

Draft/Final Report Stage: Draft

Date: 24th July 2017

Enquiries to: AOC Archaeology Group
Edgefield Industrial Estate
Edgefield Road
Loanhead
EH20 9SY

Tel. 0131 440 3593
Fax. 0131 440 3422
e-mail. edinburgh@aocarchaeology.com



Contents

	Page
List of Illustrations	2
List of Plates	2
List of Appendices	2
ABSTRACT	3
1 INTRODUCTION	4
1.1 Background	4
1.2 Site Location	4
1.3 Historical Background.....	4
2 OBJECTIVES.....	4
3 METHODOLOGY.....	5
4 RESULTS.....	5
5 CONCLUSION AND RECOMENDATIONS	7
6 REFERENCES.....	7
6.1 Bibliographic references	7
6.2 Cartographic references	7
Appendix 1: Evaluation Trench Descriptions	9
Appendix 2: Context Register	13
Appendix 3: Photographic Register	14
Appendix 4: Drawing Register	15
Appendix 5: Samples Register.....	15
Appendix 6: Finds Register	15
Appendix 7: <i>'Discovery and Excavation in Scotland' Report.....</i>	16

List of Illustrations

Figure 1: Site location plan

Figure 2: Evaluation trench location plan

List of Plates

Plate 1: General view of Trench 9

Plate 2: General view of bedrock in Trench 1

List of Appendices

Appendix 1: Evaluation Trench Descriptions

Appendix 2: Context Register

Appendix 3: Photographic Register

Appendix 4: Drawing Register

Appendix 5: Samples Register

Appendix 6: Finds Register

Appendix 7: *'Discovery and Excavation in Scotland'* Report

ABSTRACT

An archaeological evaluation was undertaken by AOC Archaeology Group prior to a residential development adjacent to Kirk Road, Aberlady, East Lothian.

The evaluation consisted of 1,385 linear metres of trenching across the development area. The topsoil on site was a dark grey sandy loam overlying a mottled orange, brown and pink sand or sandy clay.

A large area of bedrock was revealed within Trench 1 & Trench 8, with two areas where the rock had been cut out, most likely to enable easier ploughing of the field. Four modern iron objects were found within these stone hole pits, including a large nail or bolt and a thick piece of metal sheeting.

The site was sterile of any significant archaeology, with only ceramic tile and rubble drains noted in the remaining trenches. It is recommended that no further archaeological work be conducted within the development area. This recommendation will require the approval of East Lothian Council, who are advised on archaeological matters by the East Lothian Council Archaeology Service.

1 INTRODUCTION

1.1 Background

1.1.1 An archaeological evaluation was required by Cruden Homes prior to a residential development adjacent to Kirk Road, Aberlady, East Lothian. The scope of the works was determined by East Lothian Council as advised on archaeological matters by the East Lothian Council Archaeology Service (ELCAS). The works were conducted according to the terms of a *Written Scheme of Investigation* (AOC 2017), approved on behalf of East Lothian Council by ELCAS and in accordance with *Scottish Planning Policy* (Scottish Government 2014) and *PAN 2/2011 Planning And Archaeology* (Scottish Government 2011).

1.2 Site Location

1.2.1 The development area lies on the west side of Aberlady, East Lothian and is currently part of an arable field system (NGR: NT4616 7951; Figure 1). The site is bounded by Kirk Road to the east, the back of residential properties at The Pleasance and Elcho Terrace to the north, and arable fields to the west and south.

1.3 Historical Background

1.3.1 The route of the A198 and Kirk Road are both established by the mid 19th century 1st edition Ordnance Survey (OS 1853) map with the development area wholly shown as arable fields. No known archaeological sites lie within the development boundaries.

1.3.2 Beyond the limits of the development area the HES and local SMR databases show record for a capped well head being uncovered during an archaeological watching brief conducted in 1998 on a small building extension to the south of the development area (HES No NT47NE 73). To the east, ahead of the residential development of Kirk Road an evaluation completed in 2002 found no features or artefacts of archaeological significance (HES No. NT47NE 160).

1.3.3 To the immediate north of the development area the residential properties of 'The Pleasance' and 'Elcho Terrace' date from the early part of the twentieth century and architectural drawings relating to these buildings are listed within the HES and SMR databases. Finally, a set of pre-fabricated post war buildings formerly existed in the NE corner of the development area that were demolished circa 1970.

2 OBJECTIVES

2.1 The objectives of the archaeological evaluation were:

- i) to determine and assess the character, extent, condition, quality, date and significance of any buried archaeological remains within the proposed development area through evaluation trenching;
- ii) to advise and implement an appropriate form of mitigation, such as excavation, post-excavation analyses and publication, given the infeasibility of preserving the archaeological material *in situ*, should significant archaeological remains be encountered.

3 METHODOLOGY

- 3.1 The evaluation consisted of 20 trenches of varying length and alignment, equating to 2,770 m² of linear trench (Figure 2). The trenches were excavated using a 13 tonne tracked excavator equipped with bladed ditching bucket, and operating under the constant supervision of an experienced field archaeologist. Each trench was recorded using AOC *pro forma* trench record sheets, photographed, and any potential features investigated further to assess their character and date.

4 RESULTS

- 4.1 All archaeological works were conducted between the 12th and 17th July 2017. Weather conditions were fair throughout the course of the work conducted and archaeological visibility was good. The various data gathered from the evaluation are presented as a series of appendices:

Appendix 1: Evaluation trench descriptions
Appendix 2: Context Register
Appendix 3: Photographic Register;
Appendix 4: Drawing Register
Appendix 5: Samples Register
Appendix 6: Finds Register
Appendix 7: '*Discovery and Excavation in Scotland*' entry

- 4.2 The topsoil throughout the development area was a dark greyish sandy loam that measured between 0.35 m and 1.0 m in depth, with the deepest areas occurring to the north of the boundary hedge. This overlay a mottled orange, brown and pink slightly clayey sand with some areas of similarly coloured sandy clay and stone (Plate 1). Large areas of bedrock protrusions were also noted within Trench 1 and Trench 8 (Plate 2).
- 4.3 Regular ceramic tile drains and rubble drains were revealed in all of the trenches, set on various alignments throughout the development area. Within Trench 1, quarry pits [102] and [105] were revealed cutting out the bedrock protrusions in this area. Both features extended to the south of the trench extents, with pit [102] measuring 1.4 m wide, and pit [105] measuring 3 m by 1 m by 0.35 m deep.



Plate 1: General view of Trench 9



Plate 2: General view of bedrock in Trench 1

5 CONCLUSION AND RECOMENDATIONS

- 5.1 The archaeological evaluation at Aberlady has shown that the area is sterile of significant archaeology. It is recommended that no further archaeological works be conducted.
- 5.2 These recommendations will require the approval of East Lothian Council, who will determine the scope of any further work, and who are advised on archaeological matters by the East Lothian Council Archaeology Service.

6 REFERENCES

6.1 Bibliographic references

AOC 2017 *Aberlady, East Lothian: Archaeological Evaluation Written Scheme of Investigation*.
Unpublished client report

Scottish Government 2014 Scottish Planning Policy.

Scottish Government 2010 PAN 2/2011 Planning & Archaeology.

6.2 Cartographic references

1853 Ordnance Survey *Haddington, Sheet 4*

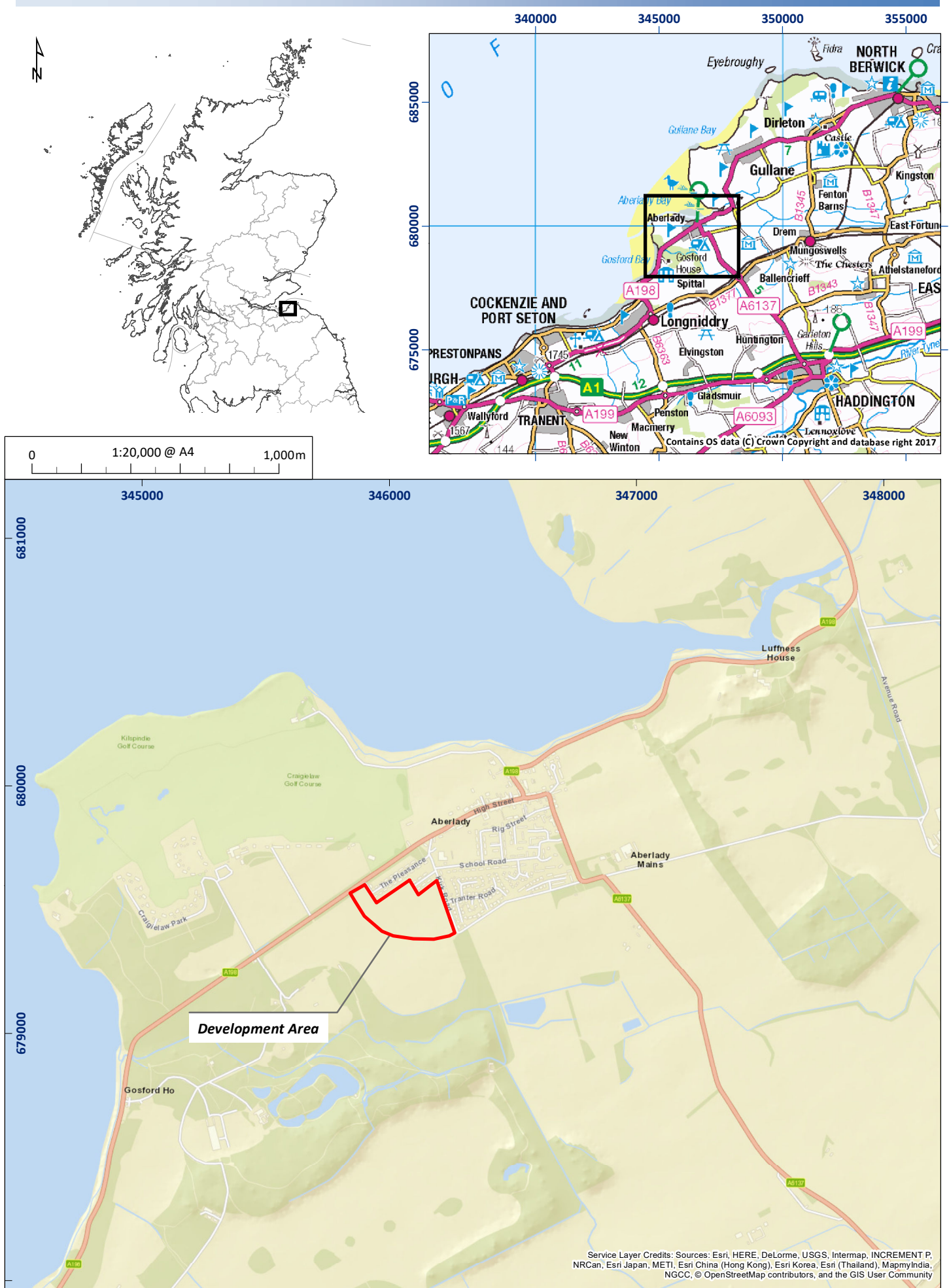


Figure 1: Site location plan

01/23882/REP/01/01

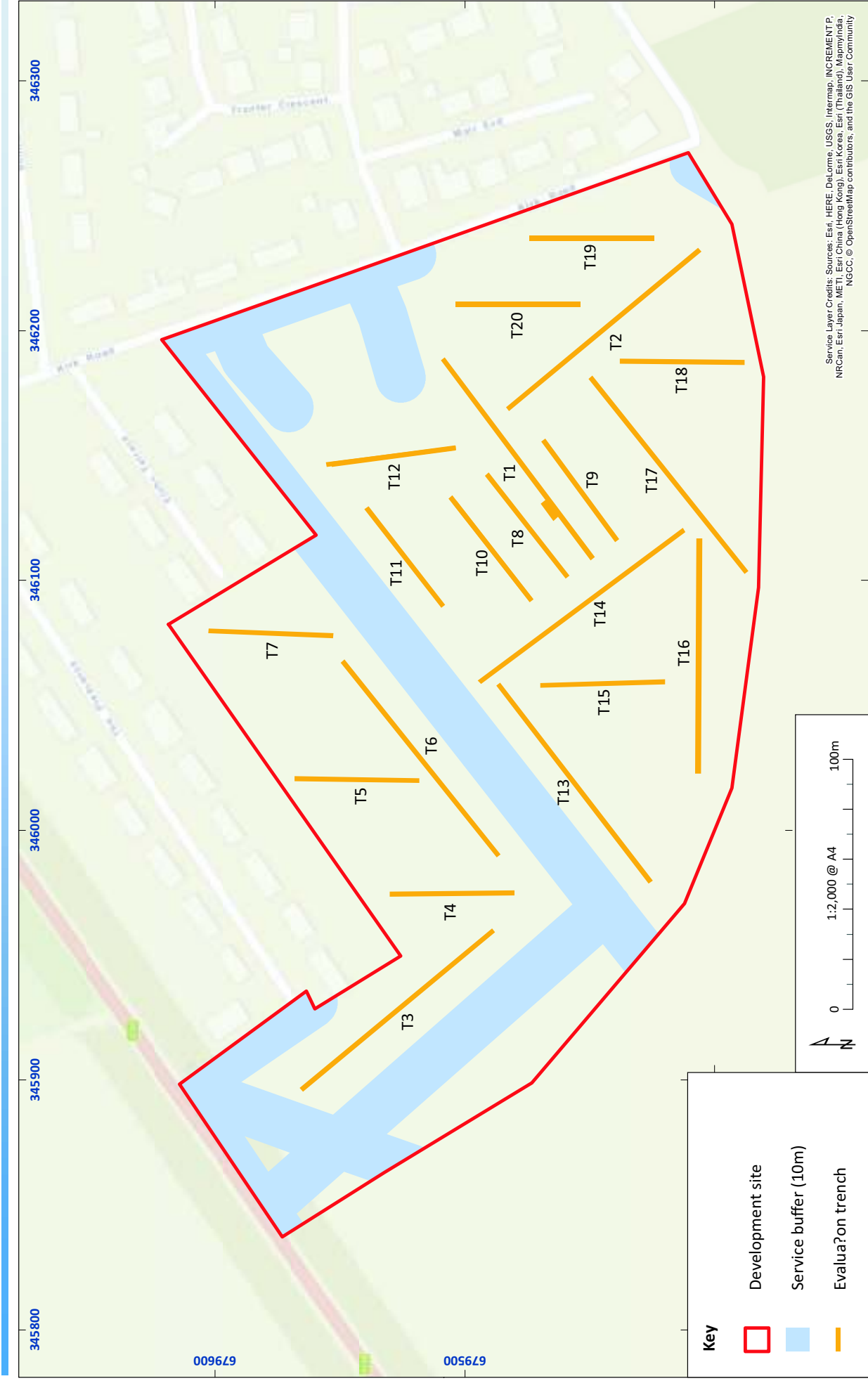


Figure 2: Evaluation trench location plan

**Aberlady, East Lothian:
Archaeological Evaluation
Data Structure Report**

Section 2: Appendices

Appendix 1: Evaluation Trench Descriptions

Trench 1

<i>Dimensions</i>	100 m by 2 m
<i>Excavated Area</i>	200 m ²
<i>Excavated Orientation</i>	E to W
<i>Soil make-up</i>	Topsoil – Dark grey sandy loam – 0.6 m
<i>Natural Subsoil</i>	Mottled orange, brown and pink slightly clayey sand
<i>Significant Features</i>	None
<i>Other Features</i>	[101] – bedrock; [102]/[103] – large quarry pit; [104] – bedrock; [105]/[106] – large quarry pit; [107] – bedrock; [108] – bedrock; [109] – bedrock. Ceramic tile drain at 4.6 m and 20.5 m aligned NE-SW. Also at 56 m and 67 m aligned E-W.
<i>Finds</i>	None

Trench 2

<i>Dimensions</i>	100 m by 2 m
<i>Excavated Area</i>	200 m ²
<i>Excavated Orientation</i>	N to S
<i>Soil make-up</i>	Topsoil – Dark grey sandy loam – 0.8 m
<i>Natural Subsoil</i>	Mottled orange, brown and pink slightly clayey sand
<i>Significant Features</i>	None
<i>Other Features</i>	Ceramic tile drains at 8 m and 91 m aligned E-W. Also at 33 m aligned NE-SW
<i>Finds</i>	None

Trench 3

<i>Dimensions</i>	100 m by 2 m
<i>Excavated Area</i>	200 m ²
<i>Excavated Orientation</i>	N to S
<i>Soil make-up</i>	Topsoil – Dark grey sandy loam – 1.01 m
<i>Natural Subsoil</i>	Mottled orange, brown and pink clayey sand
<i>Significant Features</i>	None
<i>Other Features</i>	Ceramic tile drains at 45 m and 75 m aligned NW-SE.
<i>Finds</i>	None

Trench 4

<i>Dimensions</i>	50 m by 2 m
<i>Excavated Area</i>	100 m ²
<i>Excavated Orientation</i>	NE to SW
<i>Soil make-up</i>	Topsoil – Dark grey sandy loam – 1 m
<i>Natural Subsoil</i>	Mottled orange, brown and pink clayey sand
<i>Significant Features</i>	None
<i>Other Features</i>	Ceramic tile drains at 3 m and 38 m aligned NE-SW.
<i>Finds</i>	None

Trench 5

<i>Dimensions</i>	50 m by 2 m
<i>Excavated Area</i>	100 m ²
<i>Excavated Orientation</i>	NE to SW
<i>Soil make-up</i>	Topsoil – Dark grey sandy loam – 0.7 m
<i>Natural Subsoil</i>	Mottled orange, brown and pink slightly clayey sand
<i>Significant Features</i>	None
<i>Other Features</i>	Ceramic tile drains at 23 m; 33 m and 45 m aligned NW-SE. Also at 36 m aligned E-W
<i>Finds</i>	None

Trench 6

<i>Dimensions</i>	100 m by 2 m
<i>Excavated Area</i>	200 m ²
<i>Excavated Orientation</i>	E to W

Soil make-up Topsoil – Dark grey sandy loam – 0.7 m
 Natural Subsoil Mottled orange, brown and pink sandy clay
 Significant Features None
 Other Features Ceramic tile drains at 8.5 m; 17 m; 26 m; 33 m; 35 m; 39 m; 45 m; 55 m; 61 m; 67 m; 78 m; 82 m; and 95 m aligned NE-SW.
 Rubble drain at 74 m aligned SE-NW

Finds None

Trench 7

Dimensions 50 m by 2 m
 Excavated Area 100 m²
 Excavated Orientation NE to SW
 Soil make-up Topsoil – Dark grey sandy loam – 0.9 m
 Natural Subsoil Mottled orange, brown and pink sandy clay
 Significant Features None
 Other Features Ceramic tile drains at 8 m; 18 m; 2 m and 35 m aligned N-S.
 Rubble drain at 25 m aligned N-S

Finds None

Trench 8

Dimensions 50 m by 2 m
 Excavated Area 100 m²
 Excavated Orientation W to E
 Soil make-up Topsoil – Dark grey sandy loam – 0.45 m
 Natural Subsoil Mottled orange, brown and pink clayey sand with protrusions of bedrock from 0 m to 28 m

Significant Features None
 Other Features Ceramic tile drains at 37.2 m aligned NNE-SSW.
 Rubble drain at 39.8 m aligned WNW-ESE

Finds None

Trench 9

Dimensions 50 m by 2 m
 Excavated Area 100 m²
 Excavated Orientation E to W
 Soil make-up Topsoil – Dark grey sandy loam – 0.6 m
 Natural Subsoil Mottled orange, brown and pink slightly clayey sand
 Significant Features None
 Other Features Ceramic tile drains at 1 m and 40 m aligned NNE-SSW.
 Rubble drain at 7.4 m to 17.9 m aligned WNW-ESE

Finds None

Trench 10

Dimensions 50 m by 2 m
 Excavated Area 100 m²
 Excavated Orientation E to W
 Soil make-up Topsoil – Dark grey sandy loam – 0.45 m
 Natural Subsoil Mottled orange, brown and pink sandy clay and stone
 Significant Features None
 Other Features Ceramic tile drains at 18.2 m; 27.2 m; 33.4 m; 40.1 m and 46.8 m aligned NNE-SSW

Finds None

Trench 11

Dimensions 50 m by 2 m
 Excavated Area 100 m²
 Excavated Orientation W to E
 Soil make-up Topsoil – Dark grey sandy loam – 0.5 m
 Natural Subsoil Mottled orange, brown and pink sandy clay and stone
 Significant Features None
 Other Features Ceramic tile drains at 2 m; 8.4 m; 15.3 m; 40 m and 49 m aligned NNE-SSW

<i>Finds</i>	None
Trench 12	
<i>Dimensions</i>	50 m by 2 m
<i>Excavated Area</i>	100 m ²
<i>Excavated Orientation</i>	NE to SW
<i>Soil make-up</i>	Topsoil – Dark grey sandy loam – 0.44 m
<i>Natural Subsoil</i>	Mottled orange, brown and pink sandy clay
<i>Significant Features</i>	None
<i>Other Features</i>	Ceramic tile drains at 4.7 m to 12.6 m; and 43 m to 50 m aligned NNE-SSW
<i>Finds</i>	None
Trench 13	
<i>Dimensions</i>	90 m by 2 m
<i>Excavated Area</i>	180 m ²
<i>Excavated Orientation</i>	W to E
<i>Soil make-up</i>	Topsoil – Dark grey sandy loam – 0.45 m
<i>Natural Subsoil</i>	Mottled orange, brown and pink slightly clayey sand with frequent coal and shale lenses until 70 m then mottled orange, brown and pink sandy clay and stone
<i>Significant Features</i>	None
<i>Other Features</i>	Furrow at 4.9 m aligned NNE-SSW measuring 1.3 m wide by 0.03 m deep. Rubble drain at 12.4 m; 32.9 m and 42.1 m aligned NNE-SSW Ceramic tile drains at 37.3 m; and 66.6 m aligned NNE-SSW. Also at 40.8 m aligned NNW-SSE
<i>Finds</i>	None
Trench 14	
<i>Dimensions</i>	100 m by 2 m
<i>Excavated Area</i>	200 m ²
<i>Excavated Orientation</i>	N to S
<i>Soil make-up</i>	Topsoil – Dark grey sandy loam – 0.64 m
<i>Natural Subsoil</i>	Mottled orange, brown and pink sandy clay and stone until 45 m then mottled orange, brown and pink clayey sand
<i>Significant Features</i>	None
<i>Other Features</i>	Rubble drain at 16.5 m aligned ENE-WSW, and 44.2 m aligned E-W. Ceramic tile drain at 24.6 m to 31 m; and 78 m aligned NNE-SSW. Also at 36.6 m, 55 m and 78 m aligned E-W.
<i>Finds</i>	None
Trench 15	
<i>Dimensions</i>	50 m by 2 m
<i>Excavated Area</i>	100 m ²
<i>Excavated Orientation</i>	NE to SW
<i>Soil make-up</i>	Topsoil – Dark grey sandy loam – 0.65 m
<i>Natural Subsoil</i>	Mottled orange, brown and pink sandy clay and stone until 10 m then mottled orange and brown slightly clayey sand
<i>Significant Features</i>	None
<i>Other Features</i>	Rubble drain at 4.7 m to 7.5 m; 27.3 m aligned E-W. Also at 23.3 m aligned NW-SE. Ceramic tile drains at 37.3 m and 46.5 m to 50 m aligned NW-SE. Also at 45 m to 46.5 m aligned E-W
<i>Finds</i>	None
Trench 16	
<i>Dimensions</i>	95 m by 2 m
<i>Excavated Area</i>	190 m ²
<i>Excavated Orientation</i>	NW to SE
<i>Soil make-up</i>	Topsoil – Dark grey sandy loam – 0.64 m
<i>Natural Subsoil</i>	Mottled orange, brown and pink slightly clayey sand
<i>Significant Features</i>	None

Other Features Rubble drain at 3.1 m; and 12.5 m aligned N-S. Also at 19 m to 39.7 m aligned NW-SE.
Ceramic tile drains at 13.6 m to 16 m aligned E-W. Also at 18.4 m; and 42.7 m aligned N-S

Finds None

Trench 17

Dimensions 100 m by 2 m
Excavated Area 200 m²
Excavated Orientation W to E
Soil make-up Topsoil – Dark grey sandy loam – 0.7 m
Natural Subsoil Mottled orange, brown and pink slightly clayey sand
Significant Features None
Other Features Rubble drain at 5.1 m aligned N-S. Also at 14.8 m to 16.8 m aligned 14.8 m to 16.8 m aligned NW-SE. Also at 16.4 m to 31.2 m aligned WNW-ESE, connected into at 22. M aligned N-S
Ceramic tile drains at 46.7 m aligned N-S

Finds None

Trench 18

Dimensions 50 m by 2 m
Excavated Area 100 m²
Excavated Orientation SW to NE
Soil make-up Topsoil – Dark grey sandy loam – 0.5 m
Natural Subsoil Mottled orange, brown and pink slightly clayey sand
Significant Features None
Other Features Ceramic tile drain at 0 m to 4.3 m aligned N-S

Finds None

Trench 19

Dimensions 50 m by 2 m
Excavated Area 100 m²
Excavated Orientation SW to NE
Soil make-up Topsoil – Dark grey sandy loam – 0.8 m
Natural Subsoil Mottled orange, brown and pink slightly clayey sand
Significant Features None
Other Features Ceramic tile drains at 44.4 m to 50 m aligned N-S

Finds None

Trench 20

Dimensions 50 m by 2 m
Excavated Area 100 m²
Excavated Orientation NE to SW
Soil make-up Topsoil – Dark grey sandy loam – 0.6 m
Natural Subsoil Mottled orange, brown and pink sandy clay and stone until 28 m then mottled orange and brown clayey sand

Significant Features None
Other Features Ceramic tile drains at 5.3 m; 7.1 m; 8 m and 8.6 m aligned E-W

Finds None

Appendix 2: Context Register

Context No.	Area	Description and Interpretation
[101]	T1	Large fractured stone underlying the subsoil to the N of trench 1 when extended. Bedrock protrusion
[102]	T1	Sub-circular shaped cut with S edge extending out with trench. Measured 1.4 m long (E-W) and 0.7 m wide (N-S). Not excavated. Modern quarry pit
[103]	T1	Dark grey sandy silt with lenses of mid brown silty sand. Fill of pit [102]
[104]	T1	Line of fragmented bedrock aligned N-S with W edge adjacent to ditch [105]. Area extended to the N was revealed the rock continued under the subsoil. Bedrock protrusion
[105]	T1	Linear cut with vertical/stepped sides onto a flat base (Slopes S to N with bedrock). Cut into bedrock protrusion ([104] and [107]). Measures 3 m long but difficult to establish to N of Trench 1 and is 1 m wide by 0.35 m deep. Modern quarry pit
[106]	T1	Dark grey slightly silty sand with frequent medium stone inclusions. Four modern iron objects found within (SF 1). Fill of pit [105]
[107]	T1	Large area of truncated stone that is under subsoil to the N of T1. Bedrock protrusion
[108]	T1	Fragments of stone aligned NW-SE and measuring 2 m long by 0.5 m wide. Fragmented by ploughing and machine excavation. Bedrock protrusion
[109]	T1	Line of truncated bedrock measuring 2 m long by 0.7 m wide, aligned NW-SE. Bedrock protrusion

Appendix 3: Photographic Register

Frame	Description	From	Date
1-4	Pre-ex shots of development area	Var	12/7/17
5	Post-ex view of T1	E	12/7/17
6	Post-ex view of T2	N	12/7/17
7	Post-ex view of T3	S	12/7/17
8	Post-ex view of T4	SW	12/7/17
9	Post-ex view of T5	SW	12/7/17
10	Post-ex view of T6	E	12/7/17
11	Post-ex view of T7	SW	12/7/17
12	General view of bedrock features in T1	E	13/7/17
13	Bedrock [101]	SE	13/7/17
14	General view of pit [102]	E	13/7/17
15	General view of bedrock [104]	S	13/7/17
16	General view of [107] and [108]	S	13/7/17
17	General view of [109]	SE	13/7/17
18-19	General view of bedrock in T1	VAR	13/7/17
20	N-facing section through pit [105]	N	13/7/17
21	General view of slot in pit [105]	N	13/7/17
22	Post-ex view of T8	E	13/7/17
23	Post-ex view of T9	W	13/7/17
24	Post-ex view of T10	W	13/7/17
25	Post-ex view of T11	E	13/7/17
26	Post-ex view of T12	W	13/7/17
27	Post-ex view of T13	E	13/7/17
28	General view of [801], [802] and [803] – bedrock	E	13/7/17
29	General view of [801], [802] and [803] – bedrock	S	13/7/17
30	Post-ex view of T14	S	14/7/17
31	Post-ex view of T15	SW	14/7/17
32	Post-ex view of T16	SE	14/7/17
33-35	General view of rock heads in T8	VAR	14/7/17
36-39	General views of area to N of power lines	VAR	14/7/17
40	Post-ex view of T17	W	14/7/17
41	Post-ex view of T18	NE	14/7/17
42	Post-ex view of T19	NE	17/7/17
43	Post-ex view of T20	SW	17/7/17
44-46	General view of area backfilled	VAR	17/7/17

Appendix 4: Drawing Register

Drawing No.	Details	Scale
1	Plan of features in T1	1:50
2	N-facing section through pit [105]	1:10

Appendix 5: Samples Register

Context No.	Quantity (litres)
106	10

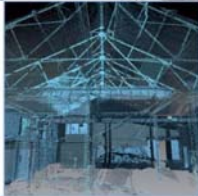
Appendix 6: Finds Register

Finds No.	Context No.	Description
1	106	4 x Iron objects

Appendix 7: 'Discovery and Excavation in Scotland' Report

LOCAL AUTHORITY:	East Lothian Council
PROJECT TITLE/SITE NAME:	Aberlady, East Lothian
PROJECT CODE:	23882
PARISH:	Aberlady
NAME OF CONTRIBUTOR:	Kevin Paton
NAME OF ORGANISATION:	AOC Archaeology Group
TYPE(S) OF PROJECT:	Evaluation
NMRS NO(S):	N/A
SITE/MONUMENT TYPE(S):	N/A
SIGNIFICANT FINDS:	None
NGR (2 letters, 6 figures)	NT 4616 7951
START DATE (this season)	12 th July 2017
END DATE (this season)	17 th July 2017
PREVIOUS WORK (inc DES)	None
MAIN (NARRATIVE) DESCRIPTION: (May include information from other fields)	<p>An archaeological evaluation was undertaken by AOC Archaeology Group prior to a residential development adjacent to Kirk Road, Aberlady, East Lothian.</p> <p>The evaluation consisted of 1,385 linear metres of trenching across the development area. The topsoil on site was a dark grey sandy loam overlying a mottled orange, brown and pink sand or sandy clay.</p> <p>A large area of bedrock was revealed within Trench 1 & Trench 8, with two areas where the rock had been cut out, most likely to enable easier ploughing of the field. Four modern iron objects were found within these stone hole pits, including a large nail or bolt and a thick piece of metal sheeting.</p> <p>The site was sterile of any significant archaeology, with only ceramic tile and rubble drains noted in the remaining trenches.</p>
PROPOSED FUTURE WORK:	Unknown
CAPTION(S) FOR ILLUSTRATIONS:	N/A
SPONSOR OR FUNDING BODY:	Cruden Homes
ADDRESS OF MAIN CONTRIBUTOR:	AOC Archaeology Group Edgefield Road Industrial Estate Loanhead, Midlothian, EH20 9SY
EMAIL ADDRESS:	admin@aocarchaeology.com

ARCHIVE LOCATION	Archive to be deposited in NMRS
-------------------------	---------------------------------



AOC Archaeology Group, Edgefield Industrial Estate, Edgefield Road, Loanhead EH20 9SY
tel: 0131 440 3593 | fax: 0131 440 3422 | e-mail: edinburgh@aocarchaeology.com

www.aocarchaeology.com