

Land North of Wester Dalmeny Cottages, Dalmeny, Edinburgh Archaeological Works Data Structure Report

AOC Project 23948

30th August 2017



ARCHAEOLOGY

HERITAGE

CONSERVATION

Land North of Wester Dalmeny, Dalmeny, Edinburgh

Archaeological Works Data Structure Report

On Behalf of: Westpoint Homes Ltd.,
3 Arthur Street,
Clarkston,
Glasgow
G76 8BQ

National Grid Reference (NGR): NT 14330 77515

AOC Project No: 23948

OASIS No: 1-290895

Planning Ref No: 16/05995/FUL

Prepared by: Anne-Aymonne Marot

Illustration by: Sam O'Leary

Date: 11/01/2018

This document has been prepared in accordance with AOC standard operating procedures.

Author: Anne-Aymonne Marot **Date:** 11/01/2018

Approved by: Rob Engl **Date:** 11/01/2018

Draft/Final Report Stage: Draft **Date:** 11/01/2018

Enquiries to: AOC Archaeology Group
Edgefield Industrial Estate
Edgefield Road
Loanhead
EH20 9SY

Tel. 0131 440 3593
Fax. 0131 440 3422
e-mail. admin@aocarchaeology.com



Contents

	Page
List of Illustrations.....	4
List of Plates	4
List of Appendices	4
Abstract.....	5
1 INTRODUCTION	7
1.1 Background	7
1.2 Location.....	7
1.3 Archaeological Background.....	7
2 OBJECTIVES	8
3 METHODOLOGY.....	8
4 RESULTS (Monitored Topsoil Strip, Excavation & Archaeological Watching Brief)	9
5 CONCLUSION AND RECOMMENDATIONS	18
6 REFERENCES	19
APPENDIX 1: CONTEXT REGISTER.....	21
APPENDIX 2: DRAWING REGISTER	41
APPENDIX 3: SMALL FINDS REGISTER.....	44
APPENDIX 4: PHOTOGRAPHIC REGISTER	46
APPENDIX 5: SAMPLE REGISTER	53
APPENDIX 5: <i>'Discovery and Excavation in Scotland'</i> Report.....	57

List of Illustrations

Figure 1	Site location
Figure 2	Site Plan
Figure 3	Plan of Structure 1
Figure 4	Plan of Structure 2

List of Plates

Plate 1	Feature [038], pit of unknown date with step
Plate 2	General view of SF within [195]
Plate 3	General view of [125]
Plate 4	East facing section of linear [108]
Plate 5	General view [079] and [081]
Plate 6	S facing section [187] and [189]
Plate 7	General view of Structure 1
Plate 8	General view of Wall [093]
Plate 9	General view of walls [167], [168] and [169]
Plate 10	NW-SE stone wall [072]
Plate 11	NE-SW wall [097]
Plate 12	Stone surface of Structure 2
Plate 13	Circular platform [035]
Plate 14	Watching brief on the south-west corner of the site

List of Appendices

Appendix 1	Context Registers
Appendix 2	Drawing Register
Appendix 3	Small Finds Register
Appendix 4	Photographic Register
Appendix 5	<i>'Discovery and Excavation in Scotland'</i> Report

Abstract

Following the completion of an initial archaeological evaluation undertaken by AOC Archaeology Group in July 2017 further works consisting of a monitored topsoil strip, archaeological excavation and archaeological watching brief were carried out prior to a residential development on land north of Wester Dalmeny Cottages, Dalmeny, Edinburgh (NGR; NT 14330 77515).

The works involved the monitored topsoil stripping of a targeted area measuring 7000m². The evaluation had revealed a substantial over-burden of topsoil ranging from 0.60m to 1.70m in depth. Numerous archaeological deposits and features were revealed including pits, ditches and dry-stone structural features of unknown date.

The topsoil strip revealed a further 122 features illustrating two probable phases of occupation. Initial activity was represented by a suite of cut features including pits, post-holes, and linear/curvilinear ditches cut into the natural. These features were overlain by an early agricultural soil. This deposit contained the truncated remains of several dry-stone structures including two rectangular buildings and fragmentary walls.

The old agricultural soil and the dry-stone structures were in-turn overlain by a deep, improved topsoil ranging from 0.40m to 1.40m in depth. This deposit contained numerous sherds of modern ceramic.

A small assemblage of six coarse stone artefacts of uncertain date was recovered during the works. These included two whetstones and two probable rotary quern/socket stones.

Several sherds of medieval white gritty ware and a fragment of Samian ware bowl with *graffito* were recovered from the buried agricultural soil.

A substantial assemblage of animal bones, periwinkle and whelk was obtained from the archaeological features.

Though the site awaits a programme of secure dating, the limited number of finds recovered from sealed deposits within the site suggests a probable prehistoric to early historic occupation.

The archaeological watching brief was focused on the south-west corner of the site, an area partially occupied by the Dalmeny shale oil tunnel. The part of the area to be disturbed by the development was monitored revealing no further archaeologically significant features or finds.

Due to the significance within the development area it is recommended that a post-excavation research design (PERD) be produced. The PERD will define the scope and scale of post-excavation works necessary to adhere to the fieldwork findings, and to produce a final report suitable for publication.

1 INTRODUCTION

1.1 Background

1.1.1 A programme of archaeological works consisting of a monitored topsoil strip and archaeological excavation was required at the request of City of Edinburgh Council Archaeology Service (CECAS) prior to the construction of a small residential development within Land North of Wester Dalmeny Cottages, Dalmeny, Edinburgh. These works have been stipulated a condition of Planning (Planning Ref No. 16/05995/FUL). The site lies within the administrative area of the City of Edinburgh Council, which is advised on archaeological matters by CECAS. The archaeological works were conducted in accordance with the principles as set out in *Scottish Planning Policy (2014)* and *Planning and Archaeology 2/2011 (2011)*.

1.2 Location

1.2.1 The proposed development area is a predominantly agricultural site with well established tree lined boundaries to the North and East. The eastern boundary is marked by Bankhead Road and the southern boundary by Wester Dalmeny Cottages. The Western boundary of the site backs onto a modern development with an existing building and access way in the southwest corner of the development area. The site is centred on NGR NT 14330 77515.

1.3 Archaeological Background

1.3.1 No sites are listed as lying within the site boundaries and as mid-19th Century 1st Edition Ordnance Survey map extract shows, the site shows little in the way of modern development with an orchard area in the far southwest of the site. On the 1st Edition the Wester Dalmeny Cottages are shown, (HES No. NT17NW 164, 165, 166 & 282). These Mid 19th century single storey farm labourer cottages are now all C-Listed (Listed Building No. 81, 5530 & 5531). A little further to the southeast lies a C-Listed (Listed Building No. 5543) WWI and WWII war memorial from c. 1920 (HES No. NT17NW 152).

1.3.2 In 2002 a programme of building survey and archaeological evaluation was undertaken prior to the conversion of Wester Dalmeny farmstead into a series of dwellings. The Wester Dalmeny farmstead lay immediately west of the current development and the building survey identified five phases in the farm development. The findings described the sequence as "The steading was constructed in 1827 based on a formal plan incorporating two quadrangles around two central courtyards. A hexagonal horse-engine located on the S side of the steading was in operation at this time. By the late 19th century a steam engine and boiler house had replaced this. Later phases included the construction of a free-standing byre and the demolition of the E range. The final phase included the incorporation of a grain drying facility

1.3.3 The accompanying archaeological evaluation discovered a number of possible pits and ditches and recovered sherds of late medieval pottery. A subsequent watching brief undertaken within the area to the south of the upstanding steading, uncovered the remains of a late or early post-medieval building. The structural remains comprised at least two adjoining buildings defined by vestigial walls extensively robbed of their larger stone component, a beaten earth floor deposit containing two hearth settings, and cobbled surfaces incorporating

drainage features. Green-glazed pottery was recovered, along with quantities of glass, iron objects, ironworking slag, bone and shell". (HES no. NT17NW 65).

- 1.3.4 To the east of the development site on the eastern side of Bankhead Road are a number of 19th century listed buildings that are listed within the HES database. To the north of the development area approximately 500 m away there is noted the site of a WWII barrage balloon mooring base (HES No. NT17NW 224).
- 1.3.5 Site investigation works undertaken on the proposed development area in June 2017 revealed the remains of a tunnel aligned north to south along the western site boundary. The tunnel is approximately three metres wide and 1.8m in height and has an entrance located south of Main St. The tunnel is related to shale mining undertaken within the area during the 19th and early 20th century.

2 OBJECTIVES

- 2.1 The objectives of the archaeological works were:
- i. the identification, excavation, soil sampling and recording of all significant archaeological features within the proposed development;
 - ii. the retrieval of a representative artefact assemblage;
 - iii. upon conclusion of the excavation, the preparation and undertaking of a post-excavation and publication programme;
 - iv. the post-excavation analysis of recovered material and publication of results of the excavation to bring the findings into the public and academic domain.

3 METHODOLOGY

- 3.1 A single area (see Fig 2.) equating to 7000 m² was machine stripped of topsoil under constant archaeological supervision. The topsoil stripping was restricted to the area of the site to be directly affected by the proposed development. The works were undertaken between the 1st August and the 28th August 2017. Mitigation works for dealing with the resulting findings included excavation:
- All structural features were subject to 100% excavation and recording (contra WSI Appendix 9. Non-structural linear features were subject to 20% sample excavation). Standard bulk samples, soil chemistry and , where appropriate, specialist sampling, were undertaken as per normal AOC Archaeology procedure (Appendix 9);

- Until the character of all these features was fully determined the controlled topsoil strip was maintained on ground-breaking works (Appendix 9);

3.2 The topsoil stripping of the south-west corner of the site was not undertaken during the current works due to the presence of the Dalmeny shale oil tunnel and live services. This area was to be mitigated through the provision of an archaeological watching brief during development.

4 RESULTS (Monitored Topsoil Strip, Excavation & Archaeological Watching Brief)

4.1 The archaeological topsoil strip was conducted between the 1st and 28th of August 2017. Weather conditions were fair allowing for good archaeological visibility throughout.

4.2 The evaluation undertaken in July 2017 had revealed a deep, agricultural topsoil (001) ranging from 0.40 m in the south to 1.40m in the north. The topsoil (001) overlay an older, slightly paler agricultural soil (240) ranging from 0.20m to 0.30m in depth. This agricultural soil (240) was identified separately surrounding each stone feature as (049) -(053), (073), (092), (096), (149) and (155). A mid-reddish brown sandy silt colluvium (241) was encountered below the agricultural soil (240) to the south/south-west of site, continuing to Structure 2.

4.3 Subsoil consisted of yellow brown glacial clay with occasional sub-rounded stones and gravel (002). Several blocked ceramic drains were encountered draining south to north. These were cut into the older agricultural soil (240).

4.4 The evidence suggested 2 phases of activity; an earlier phase of negative features covered by an agricultural soil (240) and a later phase of dry stone structures and walls.

4.4 Phase 1

Phase 1 encompassed a series of pits, posthole and curvilinear ditches cut into the subsoil (002) which could relate to the earliest phase of occupation identified during the archaeological works.

4.4.1 A number of these features, including 6 large flat based pits [038], [043], [045], [047], [193], [195] which ranged from 0.63m x 0.76m to 1m x 0.98m, may have been related to the second phase of occupation, but the limited number of finds from these features make them difficult to precisely date. [038] was the only pit identified with a stepped edge onto a flat base to a depth of 0.45m. To the west of site, a hollowed angular socket stone of uncertain date, possibly for a post was uncovered in posthole [195].



Plate 1 – Feature [038], pit of unknown date with step



Plate 2 - General view of SF within [195]

4.4.2 The linear and curvilinear ditches were cut in the subsoil (002) mostly in a curved shaped generally south to north. Relationships between the linear and curvilinear ditches were difficult to determine but the similar fill suggested a contemporary use. The fill of these features were generally mid greyish brown silty clay with charcoal inclusions and animal bone finds. Two large clusters of intercutting ditches were identified and another twenty-two ditches spread out across the site.

4.4.3 The first cluster to the NW of Structure 2 consisted of five intercutting ditches [117], [119], [121], [123] and [138] and two pits [125] and [128]. Pit [125] was 1.10m wide, 0.20m deep, stone lined and possibly used as a sump. A second smaller pit [128] 0.70m x 0.20m x 1.10m, was cut between [125] and ditches [117], the relationship was undetermined and the features probably contemporary. The ditches generally had gently sloping sides and rounded base with a depth between 0.10m and 0.30m. Directly to the west, three

intercutting ditches were exposed to a depth of 0.42m [221], 0.27m [223] and 0.1m [234], curving south to east and south to west.



Plate 3 - General view of [125]

4.4.4 A second cluster of intercutting ditches was exposed to the NW of Structure 1 ranging from 0.12m wide x 0.06m deep to 1.08m wide x 0.28m deep. Linear and curvilinear ditches [151], [159], [163], [177], [181] were cut on an E-W alignment with linear and curvilinear ditches [103], [112], [146], [147], [161] and [175] placed in a N-S alignment. The ditches generally had flat to slightly rounded bases and a similar mid greyish brown silty clay with charcoal inclusions. A single shallow sub-circular pit [157], measuring 0.16m x 0.44m x 0.05 was cut by curvilinear ditch [112]. Directly to the north-west of this second cluster, three curvilinear ditches were exposed, cut in a NE-NW alignment [141], SE-NW alignment [108] and S-N alignment [110]. These may have formed a sub-circular enclosure, although the full extent of [108] and [110] could not be determined as they continued beyond the limits of site. To the west, two linear ditches ([232] and [234]) on the same E-NW alignment were the probable truncated remains of the same linear which continued below stone wall [150] and below the bulk to the NW. Similarly, SW-NE aligned linear ditches [106] and [114] were likely the same linear, truncated by a borehole.



Plate 4 - East facing section of linear [108]

4.4.5 Three linear ditches were exposed extending below Structure 1 ([075], [172] and [174]). Linear ditches [172] and [174] curved NW-NE around the SE side of the structure continuing below stone walls [168] and [169]. To the NW, linear [079] was cut along the same alignment as [172] and [174], truncated towards the centre by S-N linear [081]. A second S-N linear [077] appeared to stop directly south of [079]. A series of linear ditches were uncovered in the SE corner of site, mostly along a N-S alignment ([187], [189], [213], [217]) with two linear ditches on an E-W alignment. Five intersecting linear ditches [008], [010], [026], [029] and [030] were excavated in the NW corner of the development area, although the relationship could not be determined.



Plate 5 - General view [079] and [081]



Plate 6 - S facing section [187] and [189]

4.4.6 Directly to the north of Structure 2, a cluster of 5 small circular pits ([201], [203], [205], [207], [209]) were excavated, measuring between 0.32m x 0.33m x 0.29m and 0.14m x 0.14m x 0.11m with mostly steep sides except [203] which was highly truncated. Further to the north, 2 large sub-circular pits ([134] and [136]) were

excavated. [134] measured 0.70m x 1.10m x 0.05m with sloping to steep sides and an almost flat base and [136] measured 1.50m x 0.55m x 0.30m with steep to vertical sides and a slightly rounded base. The fill of the various pits and post holes across site were of generally mid-greyish brown silty clay with animal bone finds.

4.5 Phase 2

Phase 2 related to 10 stone features set on a buried agricultural soil (240) which covered the earlier negative features suggesting a later phase of occupation. Ceramic finds were mostly from (240) and included Samian ware and gritty white ceramic.

4.5.1 Structure 1 (Fig 3)

4.5.1.1 Structure 1 was identified along the SE-NW edge of site set on an older agricultural soil (092) which appeared to have been levelled; very shallow to the south but to a depth of about 0.30m to the north. The NE-SW alignment of the highly truncated wall foundations [093], [167], [168], and [169], suggested an angular structure, possibly rectangular.



Plate 1 – General view of Structure 1

5.5.1.2 Furthest to the north, the NE-SW wall foundation [093] was set in the agricultural soil (092) using mid to large sized unworked stones, with no visible bonding. The exact line of the wall could not be ascertained as it appeared highly disturbed but the remains extend to 5.20m long and a maximum of 1m wide. In the NE corner created by [093] and [094], two stones were exposed on their side, creating an angular setting for an unknown purpose although the placement appeared deliberate.



Plate 2 – General view of Wall [093]

4.5.1.3 A possible return [094] was partially visible along the bulk although highly truncated and disturbed by ceramic drains. [094] extended for 7m under the bulk but it could not be determined if this was a wall or tumble.

4.5.1.4 Three parallel NE-SW walls foundations ([167], [168], [169]) 3m SE of [093], remaining as only one course each, suggested possible changes to the structure's outer walls. Walls [167] and [168] due to their close proximity, could be the ephemeral remains of a double wall.



Plate 3 – General view of walls [167], [168] and [169]

4.5.1.5 Towards the centre of the exposed structure a hearth (166), 0.90m x 0.70m, of burnt mid orangey red clay deposited over (092) was excavated but no cut was identified. This was similar to the other hearths excavated ((211), (212) to the west of Structure 1 and (225) to the south-west of Structure 2). Four large flat stones [095] were set in (092) within the centre of the structure, suggesting an interior flooring surface.

4.5.1.6 To the west of the hearth, 1.5m west of wall foundation [093] was a periwinkle shells deposit (165) within (092) with no visible cut measuring 1m x 0.80m.

4.5.2 Structure 2 (fig. 4)

4.5.2.1 Structure 2 which consisted of a NE-SW double wall with rubble fill [097], and a surface [098] to the SW of the wall [097] was exposed towards the centre of the development area with a NW-SE stone wall foundation [072] extending 6m SE and continuing into the bulk. The stone wall foundation [072] which was set on an agricultural soil (073) was separated from the bulk of Structure 2 by a 2m gap, although it could not be ascertained if this was truncated or deliberate. A possible setting for a post was visible at the NW edge of the wall foundations [072]. A single find of a whetstone with a hole was recovered from the surrounding deposit (073). The agricultural soil below the NW-SE wall was shallower, around 0.10m thick whereas as it continued downhill, (096) reached a height of 0.30-0.50.



Plate 4 – NW-SE stone wall [072]

4.5.2.2 A NE-SW wall foundations [097] made of two lines of stones, 0.40m apart with a rubble fill extended for 3.5m. Two probable quern stones were identified amongst the rubble of this wall, one of which may have been used as a door setting and set along the same line as a large flat stone forming a probable door step, 1.2m to the south-west.



Plate 5 – NE-SW wall [097]

4.5.2.3 A stones surface [098] extended over an area 9m x 4m and was set on agricultural soil (096). In the north corner, two carved stones of unknown purpose and a large whetstone were uncovered, possibly reused as part of a wall. A NW-SE wall could not be identified with certainty.



Plate 6 – Stone surface of Structure 2

4.5.2.4 A single large heat affected deposit (225) measuring 1m x 0.9m, was located 3.2m to the west of wall [072].

4.5.3 *Walls and platform*

4.5.3.1 The highly truncated remains of seven stone features were identified throughout the site, possibly associated with the nearby structures.

4.5.3.2 Located between Structures 1 and 2, an E-W line of unworked and unbounded stones [033] was recorded as a probable wall foundation, surviving 2.47m long x 1.4m wide and 1 course high, set on 0.40-0.8m of agricultural soil (049). 2.6m to the NE, a second line of unworked and unbounded stones survived 2.2m long x 1m wide, 1 course high and set of 0.2m of agricultural soil (050).

4.5.3.3 A circular platform [035] of mostly flat unworked, unbounded stones was excavated further to the NE, measuring 1.9m x 1.9m and 1 course high. Leading west from the platform [035], a possible path of flat unworked and unbounded stones was identified, surviving to 1 course high and extending 2.7m x 0.8m (NE-SW) and 3.4m x 1.1m (NW-SE).



Plate 7 – Circular platform [035]

4.5.3.4 Further to the north, a 3.6m x 2.6m cluster [037] comprised of unworked and unbounded stones with no obvious shape were exposed. A single spindle whorl was recovered from the deposit surrounding the stones (053). To the west, another cluster of stones [156], 6m x 4m with no defined shape was exposed. Two finds were recovered from the agricultural soil (155) the stones were set in, a fragment of Samian ware bowl with graffiti and a fragment of gritty white ware.

4.5.3.5 South of [156], the remains of a NE-SW wall [150] of unworked and unbounded stones were excavated, extending for 4m and 1 course high. Another possible NW-SE wall and entrance [197] were exposed further south to the west of Structure 2. Although highly truncated, the possible wall and tumble extended 7.7m x 3.3m.

4.6 Archaeological Watching Brief

4.6.1 An archaeological watching brief was undertaken within the south-west corner of the development area. This area was unavailable during the topsoil strip. The watching brief was undertaken on the 9th January 2018. A

total of 100m² was stripped under archaeological supervision with the remainder of the area to be built up from current ground levels in order to accommodate a footpath.

- 4.6.2 The watching brief revealed a topsoil ranging between 0.25m to 0.40m in depth. No further archaeologically significant features or finds were recorded. It was apparent that the south-west corner of the site had been heavily truncated during the construction of the shale oil access tunnel running along the western boundary of the site. Several other services were observed crossing the area.



Plate 14 – Watching brief on the south-west corner of the site

5 CONCLUSION AND RECOMMENDATIONS

- 5.1 The monitored topsoil strip and excavation revealed substantial archaeological remains most probably associated with two periods of occupation. The evidence suggests possible prehistoric to medieval activity, or even later, with rectilinear stone foundation buildings and fragmentary walls of as yet unknown purpose and stone tools. An earlier phase of activity is suggested by the linear and curvilinear ditches cut into the subsoil below an older agricultural soil.
- 5.2 The site is as yet undated due to the limited number of finds recovered. The first period of occupation was represented by a suite of cut features in the subsoil. Of interest, are the intercutting linear and curvilinear ditches which may have been used to drain the land downhill from south to north. A number of these may be the remains of enclosure ditches, in particular [223] and [123], however evidence is fragmentary. The similar fill of these cut features would also suggest a contemporary nature, and a later fill when they were out of use.
- 5.3 A second period of occupation can be surmised from the remains of several dry-stone structures including two rectangular buildings and fragmentary walls which were set on an old agricultural soil (240).

Interestingly, the finds recovered from the stone feature [156] and its surrounding deposit (155) ranged from Samian ware (possibly 2nd century) to white gritty ware (possibly 13th to 15th c), which would contribute to the possibility of an extended period of occupation.

- 5.4 St Cuthbert church located 65m to the SE of the development area, has its origin in the twelfth century, which would imply the possibility for features of this period. It is a possibility that some of the stone wall foundations relate to a contemporary period of activity.
- 5.5 The fieldwork conducted on site has fully dealt with all of the archaeology unearthed and has done so in complete accordance with the City of Edinburgh Council Archaeology Service, CECAS approved '*Topsoil Strip Written Scheme of Investigation*' (AOC 2017a) and '*Excavation Addendum*' (AOC 2017b). During the excavation CECAS were kept fully informed and visited the site on numerous occasions to oversee, offer guidance and ensure their requirements were being met. Due to the significance of the archaeology recorded within the development area CECAS will request a post-excavation research design (PERD) be produced. The PERD will define the scope and scale of post-excavation works necessary to adhere to the fieldwork findings, and to produce a final report suitable for publication. The scope and scale of this work will be set by the City of Edinburgh Council Archaeology Service.

6 REFERENCES

AOC 2017a *Wester Dalmeny Cottages Topsoil Strip Written Scheme of Investigation* Unpublished client report

AOC 2017b *Wester Dalmeny Cottages Topsoil Strip Written Scheme of Investigation – Excavation Addendum*
Unpublished client report

Scottish Government 2014 *Scottish Planning Policy 2014*

Scottish Government 2011 *Planning And Archaeology 2/2011*

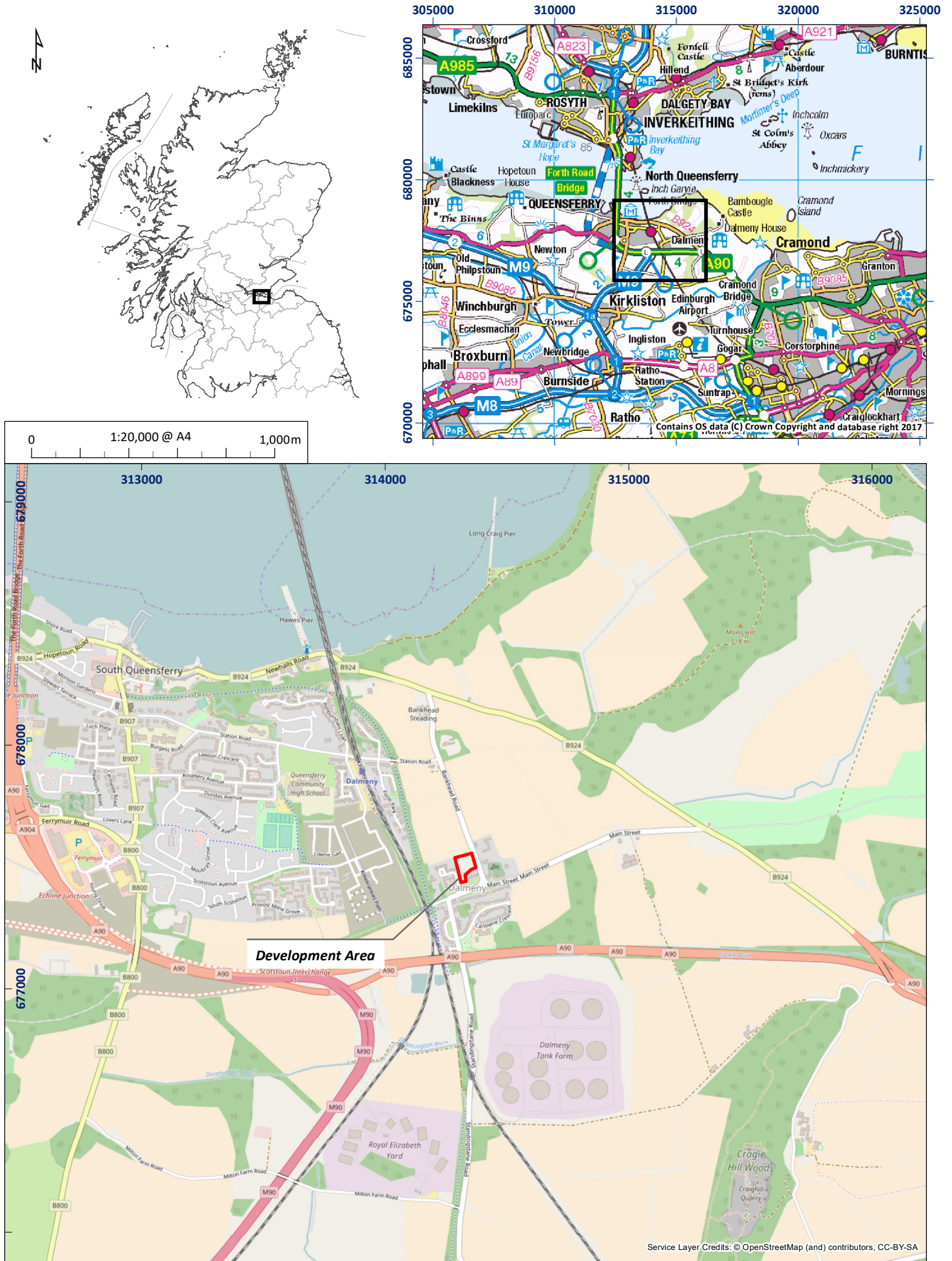


Figure 1: Site location plan

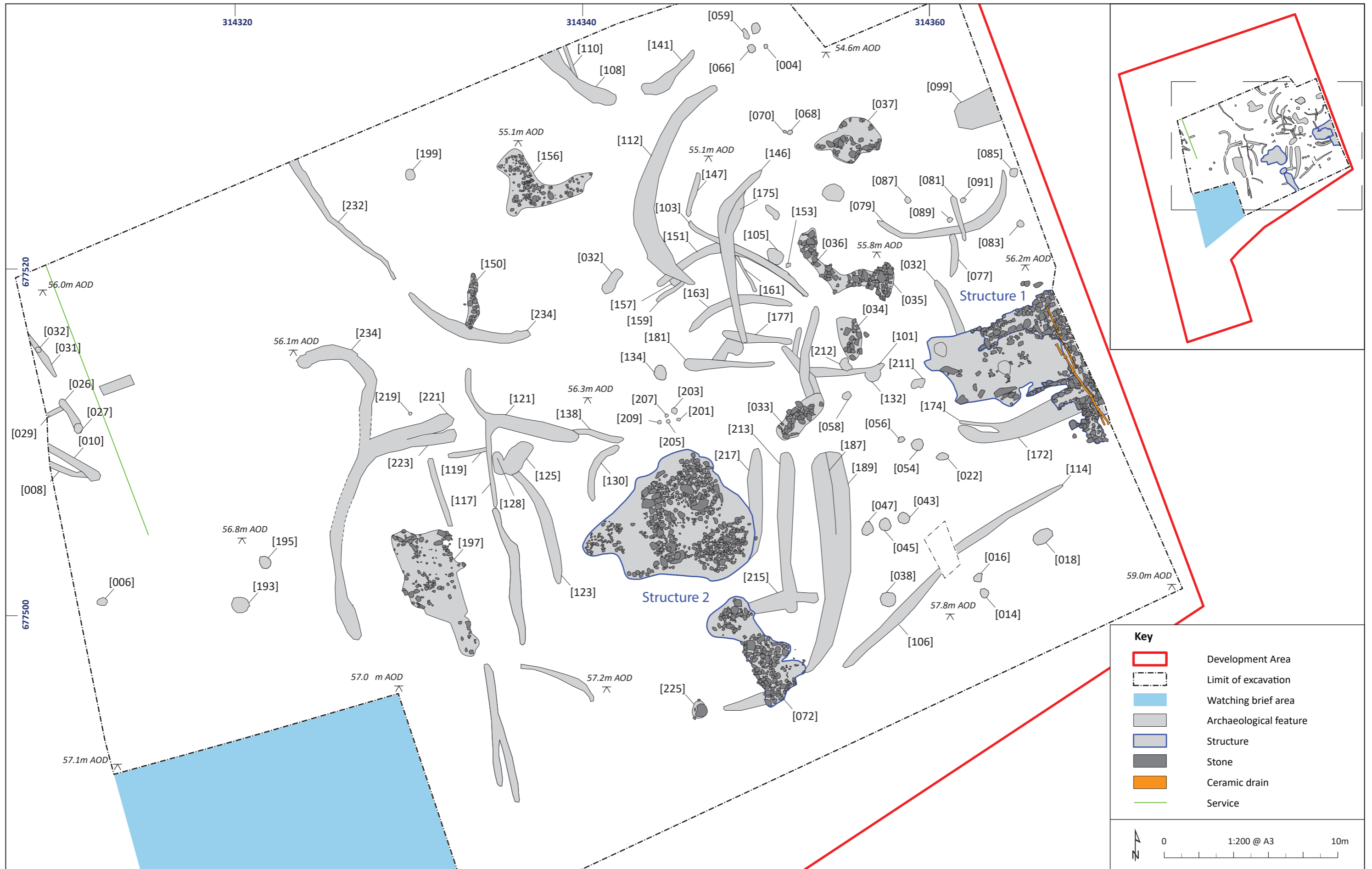


Figure 2: Site plan

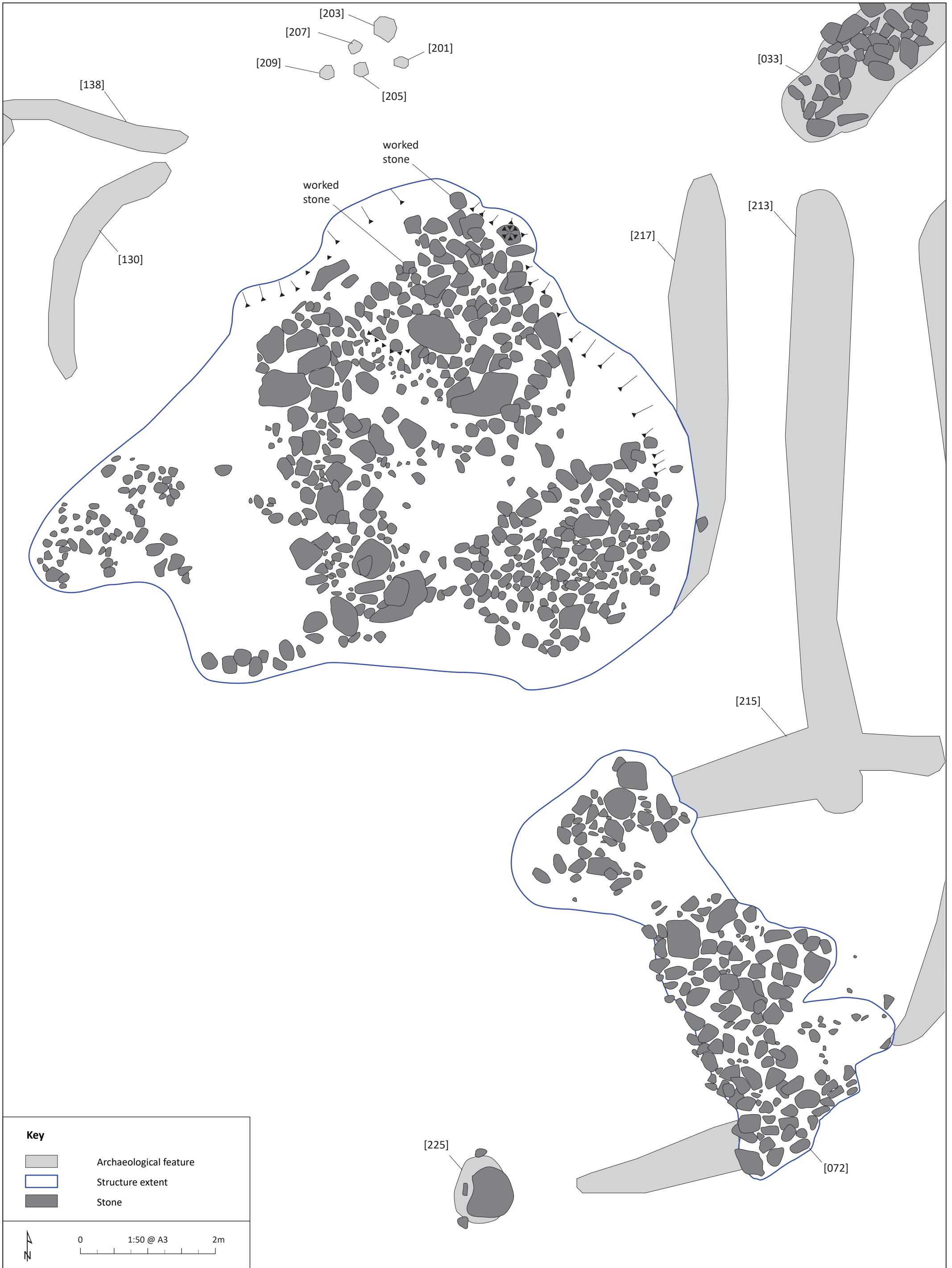


Figure 3: Plan of Structure 1

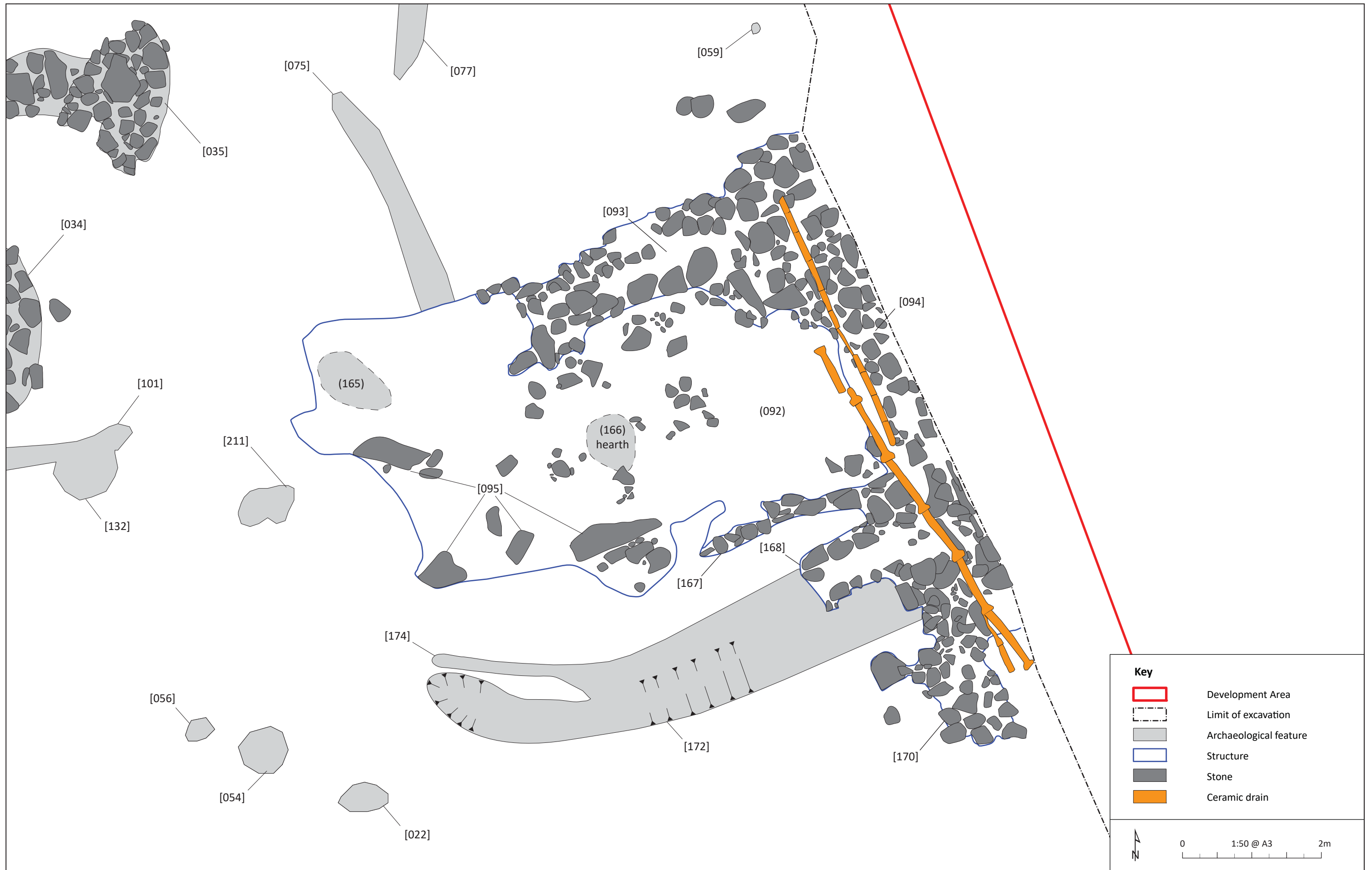


Figure 4: Plan of Structure 2

Land North of Wester Dalmeny Cottages

Archaeological Works

Data Structure Report

Section 2: Appendices

APPENDIX 1: CONTEXT REGISTER

Context	Description	Structure Number
Structure 1	(092) Deposit/buried topsoil [093] E-W wall [094] N-S wall [095] Surface stone (165) Periwinkle spread (166) Hearth [167] E-W wall [168] E-W wall [169] E-W wall [170] Stone surface (171) and [172] Linear (173) and [174] Linear	1
Structure 2	(096) Deposit/Buried topsoil [097] E-W wall [098] Surface and rubble	2
001	Dark greyish brown clay silt 0.80m to 1.60m. Fine, clean organic with occasional small stones and animal bones. Topsoil	
002	Mid orangey brown silty clay Natural	
003	Firm to plastic compaction of dark brown clay sand. Flecks of charcoal present. Visible extent to 2.12m x 0.42m and 0.05m deep Fill of ditch [004]	
004	Linear in plan with gradually sloping sides and a round base. E-W oriented. Visible extent to 2.12m x 0.42m and 0.05m deep Ditch	
005	Firm to plastic compaction of dark-brown clay sand with flecks of charcoal. 0.52m x 0.60m x 0.08m Fill of posthole	
006	Square in plan with gradually sloping sides and gradual break of slope at pointed base. 0.52m x 0.60m x 0.08m Posthole	

007	Firm to plastic compaction of dark-brown clay sand. 2.92m x 0.33m of visible extent and 0.03m deep Fill of ditch [008]	
008	Linear in plan with gradually sloping side and rounded base. Very shallow. Close proximity to [010] with truncation/overlap near terminus. Truncator unknown. 2.92m x 0.33m x 0.03m Ditch	
009	Firm to plastic compaction of clay sand with a concentration of charcoal flecks near the surface. 3.8m x 0.49m x 0.09m Fill of ditch [010]	
010	Linear in plan with vertical sided and flat base. Relationship slot taken for [008] and [010]. Likely contemporary. 3.8m x 0.49m x 0.09m Ditch	
011	Moderately compact mid dark brown silty sand with frequent charcoal. Very soft in consistency. Fill of pit [012] of unknown date	
012	Circular cut in plan measuring 0.5m x 0.41m x 0.05m. Gradual top break of slope with imperceptible sides meeting at a slight concave slanting base. Cut of pit	
013	Moderately compact, soft consistency, mid brown sandy clay silt with frequent small stones and charcoal. Fill of pit [014] of unknown date	
014	Circular shape in plan measuring 0.5m x 0.48m x 0.1m. Sharp top break of slope with gradually curved sides meeting at a flat base. Pit of unknown date	
015	Mixed redeposited natural and mid brown clay silt with infrequent charcoal and small stones Fill of pit [016] of unknown date	
016	Circular shape in plan measuring 0.47m x 0.4m x 0.06m. Sharp top break of slope with steep sides meeting at a slanting base, slants downwards at NW side, truncated by burrowing. Pit of unknown date	
017	Mixed deposit – hard mixed brown orange slightly silty clay surrounding dark brown/black, slightly clay silt with frequent charcoal Fill of pit [018] of unknown date	

018	Sub oval in plan measuring 1.174m x 0.77m x 0.15m. Sharp to break of slope with imperceptible sides meeting at an uneven base Pit of unknown date	
019	Moderately compact mid brown sandy clay silt with infrequent charcoal and small stones Fill of post hole [020] of unknown date	
020	Circular in plan measuring 0.25m x 0.21m x 0.22m. Sharp to break of slope with near vertical sides meeting at a concave base. Post hole of unknown date	
021	Moderately to very loose compact mid brown sandy clay silt with infrequent small stone inclusions contains pockets of re-deposited natural throughout. Fill of possible pit/treebowl [022]	
022	Sub oval shape in plan measuring 0.65m x 0.45m x 0.07m. Sharp to break of slope with near vertical sides meeting at a flat base. Cut of possible pit/treebowl	
023	Friable compaction of sandy silt black in colour. Truncates ditches [026] and [029] in additional area but has been truncated by machine and drain. 1.87m x 0.69m x 0.06m Fill of ditch [024]	
024	Linear in plan with gradually sloping sides and gradual break of slope at rounded base. Truncates ditches [026] and [029] in additional area but has been truncated by machine and land drain. Full extent yet to be determined. 1.87m x 0.69m x 0.06m Ditch more modern than other features in surrounding area due to fill differences and truncator.	
025	Firm to plastic compaction of dark brown sandy clay. Flecks of charcoal present. Re-deposited natural visible. Few sub-angular inclusions. Truncated by ditch [024]. 2.17m x 0.46m x 0.1m Fill of ditch [026]	
026	Linear in plan with gradually sloping sides and a gradual break of slope on rounded base. Orientation in NW-SE. Truncated at NW end by ditch [024]. Orientated SW-NE, perpendicular. Extending perpendicularly at both ends on the SE side are additional, shallow ditches [029]. 2.17m x 0.46m x 0.10m	

	Ditch likely truncated by machine and continued in ditch [031]	
027	Circular in plan with gradually sloping sides and gradual break of slope on rounded base. Located at SE end of ditch [026]. Fill same as ditch [026]. 0.62m x 0.15m Post hole within ditch [026], contemporary	
028	Firm to plastic compaction of dark brown sandy clay/ Flecks of charcoal present. Truncated by remains of ditch [024]. 1.1m x 0.26m x 0.05m Fill of ditch [029]	
029	Linear in plan with gradually sloping sides and a gradual break of slope at a rounded base NE-SW orientated. Truncated by remains of ditch [024]. 1.1m x 0.26m x 0.05m Ditch extending perpendicularly off of ditch [026], contemporary	
030	Firm to plastic compaction of dark brown sandy clay flecks of charcoal present. 3.47m x 0.3m x 0.06m Fill of ditch [031]	
031	Linear in plan with gradually sloping sides and a gradual break of slope on a rounded base. Truncated by machine. NW-SE orientated. 3.47m x 0.3m x 0.06m Ditch, continuation of ditch [026]	
032	Circular in plan with gradually sloping sides and a gradual break of slope on a rounded base. Fill is same as ditch [031]. 0.48m x 0.12m. Posthole within ditch [031]	
033	Linear shape in plan measuring 2.47m x 1.4m x 0.4m. Survives 1 course high and sits upon 0.4m of soil (049), to tal height of 0.8m. Comprised of unworked unbounded stones measuring from 0.25m x 0.15m to 0.55m x 0.35m on NE-SW alignment. Stone wall with possible tumble	
034	Linear shape in plan on NW-SE alignment measuring 2.2m x 1m x 0.3m. Survives 1 course hich on deposit of soil up to 0.2m deep comprised of unworked unbounded stones varying in size from 0.25m x 0.15m to 0.35m to 0.28m Stone wall over deposit (050)	
035	Roughly circular shape in plan measuring 1.9m x 1.9m. Comprised of unworked stones varying in size from 0.25m x 0.18m to 0.4m x 0.36m. Not bonded – dry stones. Lies to the SE of curving stone wall [036].	

	<p>Potentially only survives 1 course high. Stones are mostly flat if not rounded.</p> <p>Platform</p>	
036	<p>Curving linear stone structure abutting or contemporary to stone feature [035]. Measures 2.7m x 0.8m (NE-SW) x 3.4m x 1.1m (NW-SE). Comprised of unbounded unworked stones varying in size from 0.22m x 0.14m – 0.66m x 0.35m</p> <p>Curving from the NW to the NE. Only survives 1 course of stone high. Creates a roughly flat surface with flat and rounded stones.</p> <p>Wall or surface leading to platform [035]</p>	
037	<p>Sub oval shape in plan measuring 3.6m x 2.6m x comprised of rounded unworked, unbounded stone measuring from 0.2m x 0.15m – 0.5m x 0.3m. No obvious shape, some flat stones not continuous. Possible circular stone feature with ovoid lies to the southern edge measuring 1.4m x 1.2m.</p> <p>Stone deposit – robbed out surface/tumble</p>	
038	<p>Sub circular shaped cut with partially undercutting N edge and vertical/stepped S edge onto a flat base. Measures 0.9m x 0.78m x 0.74m. Depth to step is 0.45m. Filled by (039) and (040)</p> <p>Pit of unknown date. Step may indicate use if comparable feature known.</p>	
039	<p>Mid to dark brown silty clay with frequent very small inclusions. Measures 0.35m (N-S) x 0.09</p> <p>Primary fill of pit [038]</p>	
040	<p>Mid greyish brown clayey silty with rare stone and charcoal inclusions. Animal bone present in places.</p> <p>Upper fill of pit [038]</p>	
041	<p>Moderately compact mid brown clay silt with very infrequent small stones and charcoal inclusions.</p> <p>Post hole within [026] ditch</p>	
042	<p>Moderately compact mid brown clay silt with very infrequent small stones and charcoal inclusions.</p> <p>Post hole within ditch [031]</p>	
043	<p>Circular shaped cut with steep sides onto a flat base. 0.69m x 0.64m x 0.1m</p> <p>Cut for pit of unknown date and function</p>	

044	Dark grey clay silt Fill of pit [043]	
045	Sub-circular cut with steep to vertical sided onto a flat base. Measures 0.63m x 0.76m x 0.24m. Filled by (046) Cut for pit of unknown date and function	
046	Dark grey clayey silt with rare small stone inclusions and occasional coal and charcoal flecks Fill of pit [045]	
047	Sub-circular shaped cut with moderate sides onto a flat base. Measures 0.78m x 0.64m x 0.11m. Filled by (048) Cut for pit of unknown date and function	
048	Dark grey clay silt with occasional charcoal flecks Fill of pit [047]	
049	Moderately compact mid brown clay silt with frequent small stone inclusions and animal bone. Deposit overlying stone feature [033]	
050	Moderately compact mid brown clay silt with frequent small stone inclusions and animal bone Deposit overlying stone feature [034]	
051	Moderately compact mid brown clay silt with frequent small stone inclusions and animal bone. Same as (052) Deposit overlying stone feature [035]	
052	Moderately compact mid brown clay silt with frequent small stone inclusions and animal bone. Deposit overlying stone feature [036]	
053	Moderately compact mid brown clay silt with frequent small stone inclusions and animal bone. Deposit overlying stone feature [037]	
054	Circular shaped pit on plan measuring 0.65m x 0.70m x 0.15m. Moderately steep sloping sides onto a flat base. Cut for pit	
055	Dark brown clayey sand, moderately compacted with no inclusions. 0.15m deep Fill of pit [054]	
056	Oval shaped pit with moderately steep sides onto a wide flat base	

	measuring 0.33m x 0.41m x 0.08m Cut of pit	
057	Dark brown clayey sand lightly compacted with a small number of angular inclusions, poorly sorted >1% Fill of pit [056]	
058	Sub oval shape in plan measuring 0.67m x 0.47m x 0.06m. Sharp top break of slope with steep sides meeting at a flat base. Lies to the east of stone feature [033] Pit of unknown date	
059	Loose moderately compact mid brown clay silt with frequent small stone inclusions. Fill of pit [058] of unknown date	
060	Sub-circular cut with very steep sides onto a flat base. Measures 1.28m x 0.94m x 0.32m. Filled by (061). Situated to S of stones (037) Pit of unknown date or function	
061	Mid orangey grey silt clay, compact with rare charcoal flecks and medium stones. Fill of pit [060]	
062	Sub-oval in plan, steep sides onto flattish base. 0.52m x 0.50m x 0.13m. Cut for pit, possibly medieval.	
063	Mid grey black brown silty sand. Fairly compact with occasional charcoal inclusions. Fill of pit [062]	
064	Circular in plan, steep sides onto rounded base, 0.2m x 0.15m Cut of small posthole	
065	Mid black brown silt fairly loose. Occasional charcoal inclusions. Fill of [064]	
066	Sub-circular in plan with near vertical sides onto rounded base. 0.45m x 0.41m x 0.27m. Pit of unknown date	
067	Mid greyish brown clayey silt, occasional charcoal flecks Fill of [066]	
068	Cut of small pit to the west of stone feature [037]. Sub circular with steep sides and slightly rounded base. 0.26m x 0.27m x 0.22m. Cut of small pit to west of [037]	

069	Mid greyish brown silty clay fill of posthole – no inclusions Fill of [068]	
070	Sub-circular pit, gently sloping sides and slightly rounded base. 0.18m x 0.14m x 0.12 Cut of small pit	
071	Mid greyish brown silty clay fill of posthole – no inclusions Fill of [070]	
072	Stone wall, possible double wall with rubble centre. Unworked stones, wall possibly continued to Structure 2. Although this has been truncated some of the stones are placed to possibly form a post hole. Stone wall aligned N-S	2
073	Very little deposit below stones. Most appear to be on natural, others may be a second course which has collapsed on some of the topsoil 0.10-0.20m. Mid greyish brown silty clay deposit with some charcoal patches throughout Deposit surrounding stone wall [072]	2
074	Mid greyish brown silty clay fill of linear Fill of linear [075]	
075	Cut of linear steep to the NE and gently sloping to the SW. Uneven base continue below Structure 1 but does not appear to the south. 0.40m x 0.07m x 4.0m N of Structure 1 Cut of linear, possibly drain.	
076	Mid greyish brown silty clay fill of linear [077] possibly similar to (086) Fill of linear [077]	
077	Cut of N-S linear to the south of [079], shallow gradual slope, almost flat base. 2.20m x 0.45m Cut of linear	
078	Mid greyish brown silty clay fill of curvilinear [079] Fill of linear [079]	
079	Cut of curvilinear, gradual sloping sides, truncated by [081] Cut of linear, possibly drain, draining down slope.	
080	Mid greyish brown silty clay fill of [081], stone at base. Fill of linear [081]	
081	Cut of NW-SE aligned linear truncating [079], steep sides almost flat base. Cut of linear, cutting through [079]	

082	Mid greyish brown silty clay fill of [083], with single stone at base. Fill of small pit/post hole [083]	
083	Cut of circular post hole, gently sloping sides and slightly rounded base. 0.37m x 0.36m x 0.13m Cut of small pit/posthole	
084	Fill of small pit to the east of site. Mid greyish brown silty clay with single stone at base, coarse. 0.50m x 0.50m x 0.12m Fill of small pit [085]	
085	Circular cut of small pit/posthole to E of site, similar in size to [062] and [066], gently sloping sides with almost flat base, slightly rounded. 0.50m x 0.50m x 0.12m Cut of small pit/posthole	
086	Mid greyish brown silty clay fill of small pit Fill of small pit [087]	
087	Circular cut of small pit, steep sides and rounded base. 0.30m x 0.20m x 0.14m Cut of small pit	
088	Mid greyish brown silty clay fill of posthole [089] Fill of small posthole	
089	Circular cut of small posthole, steep side and slightly rounded base. 0.34m x 0.30m x 0.28m. Cut of small posthole	
090	Mid greyish brown silty clay fill of small pit Fill of small pit	
091	Sub-circular cut of small pit with steep sides and almost flat base. 0.67m x 0.58m x 0.10m Cut of small pit identified during evaluation	
092	Mid greyish brown silty clay deposit. Very shallow to the south but to a depth of about 0.30m to the north where it is downhill. Possibly used a levelling deposit but this may also have occurred naturally overtime. Periwinkle spread to the west of [093] Deposit surrounding walls [093], [094] and [095], buried soil	1
093	E-W wall of unworked stones, possibly tumble onto (092), 2 larger stones on side in NE corner, creating a possible post hole. Stones vary mid to large. 0.10m x 0.20m to 0.40m x 0.20m	1

	E-W aligned stone wall	
094	N-S wall of unworked stones possible return of [093] but cannot be determined as truncated by drains and covered to the E by bulk. N-S aligned stone wall	1
095	Possible hearth at centre, hardened clay deposit. Large flat stones, possible indicative of original flooring surface (3 stones) remain. Flooring surface	1
096	Mid greyish brown silty clay deposit wall [097] and surface [098] appear to be set on the deposit. Possible levelling deposit. 0.40m x 0.50m Deposit fill surrounding wall [097]	2
097	Unworked stones with stone finds, possibly in situ (door jamb, large whetstone), possibly reused. E-W aligned stone wall	2
098	Large flat stones as possible flooring surface, one opposite door jamb, possibly a step (entrance) Flooring surface	2
099	Charcoal and ash spread continuing beyond LOE to east. Some bone fragments throughout, located to the south of Structure 1 Charcoal and ash spread	
100	Mid greyish brown silty clay fill of curvilinear, small stones, coarse. Fill of linear [101]	
101	Cut of curvilinear south of [034] and directly to the south of a possible hearth or heat affected deposit. Shallow cut, gently sloping sides, almost flat base, continues to the south into a spread. Unlikely to be a feature Cut of linear	
102	Mid greyish brown silty clay fill of linear, very shallow Fill of linear [103]	
103	NW-SE linear, highly truncated gently sloping sides and almost flat base, most likely cut by bigger ditch [146]. 8m x 0.30m x 0.05m Cut of linear	
104	Mid greyish brown silty clay, coarse, small charcoal flecks throughout Fill of angular feature [105]	
105	Sub-angular cut of possible pit. Gently sloping sides to a slightly rounded base. Directly NE of [103]. 1.10m x 0.80m x 0.07m Cut of possible pit	

106	Linear running SW/NE into bulk (10.3m x 0.6m), shallow (0.14m) and rough cut. May continue in [114] Ditch/drainage of unknown date	
107	Dark brown granular silty clay with occasional charcoal and fragmentary bone deposit Fill of [106]	
108	Curvilinear shape in plan measuring 5m x 0.85m x 0.32m on E-W alignment. Sharp top break of slope with steep sloping sides meeting at a rounded pointed base. Extends from NW trench edge. Truncated at E terminus end and side by burrow. Ditch	
109	Moderately compact mixed dark brown clay silt with frequent charcoal and pockets of grey clay and beige sandy silt Ditch of unknown date	
110	Linear on SE-NW alignment measuring 1.2m x 0.15m x 0.08m. Sharp top break of slope and steep sides meeting at flattish base. Ditch/plough mark	
111	Moderately compact mid brown silty clay with frequent small stone inclusions. Ditch/plough mark	
112	Curvilinear cut with steep sides onto a flat base measuring 14m x 1.08m x 0.28m, cuts ditch [151] and [159] as well as pit [157]. Aligned approximately N-S, N end truncated by machine and S end terminating. Curvilinear curving from NE-SW-NW. NE terminus truncated by machine. Sharp top break of slope with varying sides meeting a sloping base. Ditch of unknown function	
113	Dark greyish brown clayey silt with occasional charcoal inclusions and possible burnt bone Fill of [112]	
114	Linear running SW (7.3m x 0.2m) into and possibly under bulk. Very shallow (0.04m) and irregular. Tapers to end in NE. May continue in [106] Ditch/drainage of unknown date	
115	Dark brown granular silty clay Fill of [114]	
116	Mid greyish brown silty clay fill of probable drain, similar to (118), (120),	

	(122), (124), (127), (129) and (137) Fill of probable drain	
117	Cut of N-S linear, probable drain, cutting [121] and cut by [119], possibly draining from S to drain [121], gently sloping sides, rounded base. 0.55m wide and 0.25m deep Possible N-S drain	
118	Mid greyish brown silty clay fill of probable drain, similar to (116), (120), (122), (124), (127), (129) and (137) Fill of probable drain	
119	Cut of E-W linear, cutting [117], gently sloping sides, rounded base, possibly draining water away from [117]. 0.32m wide and 0.10m deep Cut of drain	
120	Mid greyish brown silty clay fill of probable drain, similar to (116), (118), (122), (124), (127), (129) and (137) Fill of probable drain	
121	Cut of curvilinear drain, stepped sides to the south, gently sloping to the north with large stones to north. Rounded base. 0.80m wide and 0.32m deep Cut of curvilinear, probably same as [138]	
122	Mid greyish brown silty clay fill of probable drain, similar to (116), (118), (120), (124), (127), (129) and (137) Fill of probable drain	
123	Cut of N-S linear, probable drain, step sides and flat base. 0.60m wide and 0.13m deep Cut of drain possibly draining into [125]	
124	Mid greyish brown silty clay fill of probable drain, similar to (116), (118), (120), (122), (127), (129) and (137) Fill of probable drain	
125	Cut of possible sump, ovoid shape, gently sloping sides and slightly rounded base. 1.10m wide and 0.20mm deep Cut of possible sump	
126	Dark greyish brown silty fill, very organic with large charcoal flecks. Basal fill, charcoal, probable post pipe in post hole [083]	
127	Mid greyish brown silty clay fill of probable drain, similar to (116), (118), (120), (122), (124), (129) and (137)	

	Fill of probable drain	
128	Cut of possible pit to west of sump [125] and east of linear [117], gently sloping sides and slightly rounded base. 0.70m x 0.20m x 1.10m. Cut of small pit	
129	Mid greyish brown silty clay fill of probable drain, similar to (116), (118), (120), (122), (124), (127) and (137) Fill of probable drain	
130	Cut of curvilinear NW of Structure 2. Gently sloping sides, slightly rounded base, almost flat. 0.45m x 0.08m Cut of curvilinear, possible drain	
131	Mid greyish brown silty clay fill, same as (100) possibly related. Possible spread to south of [101]	
132	Cut of small pit to the south of [101], although possibly related to a spread Cut of small pit	
133	Mid greyish brown silty clay fill, no visible inclusions, highly truncated. Fill of sub-circular pit [134]	
134	Cut of sub-circular pit, mix of gently sloping sides and steep sides, very uneven, almost flat base. 0.70m x 1.10m x 0.05m Cut of sub-circular pit	
135	Mid greyish brown silty clay fill of pit with bone visible in section, charcoal throughout with a more concentrated lense to the base. Fill of sub-circular pit	
136	Sub-circular cut of pit, steep to vertical sides, slightly rounded base 5-6m NW of another similar sub-circular pit [134]. 1.50m x 0.55m x 0.30m Cut of sub-circular pit. Rubbish pit?	
137	Mid greyish brown silty clay fill of probable drain, similar to (116), (118), (120), (122), (124), (127) and (129) Fill of probable drain	
138	Cut of linear, sloping sides to slightly rounded almost pointed base. Probably same as [121], truncated.	
139	Sub-oblong shaped cut with steep sides onto a flat base. 0.7m x 0.3m x 0.07m. Subsoil to SE is heat affected	
140	Dark grey/black clayey silt with abundant charcoal staining, flecks and lumps	

	Fill of [139]	
141	Curvilinear cut aligned SW-NE and curving N, wider at SW terminal. Steep sided onto flat/sloping base. Measures 4.1m x 0.84m x 0.05m Cut for ditch of unknown date or function.	
142	Dark greyish brown silty clay with rare charcoal and small stone inclusions Fill of [141]	
143	Irregularly shaped cut aligned NW-SE with very shallow sides and flat sloping base. Edges of cut appear to have been heavily truncated with only the base surviving. Measures 1.03m x 0.34m x 0.03m Cut of unknown feature	
144	Dark grey clayey silt with abundant charcoal inclusions Fill of [143]	
145	Dark greyish brown silty clay with charcoal. Fill of [146]	
146	Curvilinear cut with steep sides onto a flat base. Aligned SW and curving to NE where it terminates. S terminal obscured by [177]. Cuts [103], [151], [161], [147], unknown relationship with [163] and [177]. 10.5m x 0.55m x 0.14m-0.21m Possible drain	
147	Curvilinear cut with steep sides onto a flat base measures 5m x 0.36m x 0.15m. Aligned N-S then curves SE continuing to [151] and [146] Ditch of unknown date	
148	Dark greyish brown clayey silt with occasional charcoal and stone inclusions Fill of [147]	
149	Mid greyish brown silty clay fill similar to topsoil and fill of linears, suggesting a natural fill over time on which structure was built, topsoil formation below stone features and above gradual as on a slope. Stones on 0.10-0.20m of buried topsoil, although some on natural. Deposit surrounding probable stone wall.	
150	Stone linear in N-S alignment, 1 course high, unworked stones, no bounding Probable stone wall to NW of site, although only one course remains	
151	Curvilinear cut with moderate sides onto a flat base. Aligned SW-NE, terminated to SW and truncated by [112] near terminus. Truncated by	

	[1446] to NE. 4.4m x 0.41m x 0.08m. May continue as [103] but unclear. [151] and [112] relationship inconclusive from section, plan suggests [112] cuts [151] Cut of ditch/possible drain	
152	Dark greyish brown clayey silt with occasional charcoal inclusions. Fill of [151]	
153	Sub-circular cut with moderate to steep sides onto a concave base. Measures 0.31m x 0.2m x 0.08, next to ditch [103] Pit of unknown date or function	
154	Dark greyish brown clayey silt with occasional charcoal flecks and small stone inclusions Fill of [153]	
155	Mid greyish brown silty clay fill similar to topsoil and fill of linears. 0.40m x 0.50m of buried topsoil below stones, naturally silted up as down slop? Possibly built up? Deposit surrounding [156], buried topsoil	
156	Stone feature/rubble on buried topsoil (155) Stone feature rubble	
157	Sub-circular pit with steep sides onto a flat base. Cut by ditch [112] and [151]. Measures 0.16m x 0.44m x 0.05m Pit of unknown date	
158	Dark greyish brown clay silt with charcoal inclusions Fill of [157]	
159	Linear cut aligned E-W, terminating to west and cut by [112] to East. Very shallow with flat base. Measures 2.8m x 0.22m x 0.02m Ditch of unknown date or function	
160	Dark greyish brown clay silt with charcoal inclusions Fill of [159]	
161	Linear cut with steep sides onto a concave base. Aligned SE-NW. Measures 2.4m x 0.12m x 0.06m. Truncated by [146] to NW, terminates to SE. Linear of unknown date or function.	
162	Mottled dark grey light grey and black with orange flecks. Ashy silt with charcoal inclusions. Fill of [161]	
163	Curvilinear cut by [146]	

	Curvilinear	
164	Dark greyish brown clay silt Fill of [163]	
165	Periwinkle shell 1m x 0.80m Periwinkle shell spread in Structure 1	1
166	Mid orangey red clay, friable compaction. 0.89m x 0.66m x 0.12m Hearth in Structure 1	1
167	Stone wall, 1 course remaining, 3m long to north of [168] E-W wall in Structure 1	1
168	Stone wall, 1 course remaining, 2m long to south of [167] E-W wall in Structure 1	1
169	Stone wall, 1 course remaining, 1.40m long E-W wall in Structure 1	1
170	Stone surface to south of Structure 1. Possible tumble. Surface/Tumble in Structure 1	1
171	Friable to hard compaction of dark brown silty/clay. Root left in situ. 9.8m x 0.72m x 0.09m Fill of ditch [172]	1
172	Linear in plan, running NE and curving to NW. Gradually sloping sides with gradual break of slope at base. Flat base. 9.8m x 0.72m x 0.09m Cut of ditch	1
173	Hard to plastic dark brown silty-clay. 8.1m x 0.5m x 0.08m Fill of ditch	1
174	Linear shape in plan, running NE and curving to the NW. Measures 8.1m visible length x 0.5m x 0.05m. Gradually sloping sides with a gradual break of slope meeting at a flat base. Ditch	1
175	Oblong shape in plan on N-S alignment. Cut obscured by ditch [146] and most likely contemporary. Measures 2.6m x 0.7m x 0.21m. Steep to vertical sides meeting at a flat base. Pit or small ditch	
176	Dark greyish brown silty clay with charcoal. Fill of [175]	
177	Cut of ditch to south of [146] Ditch	

178	Dark greyish brown silty clay Fill of [177]	
179	Cut of ditch between [177] and [181] Ditch	
180	Dark greyish brown silty clay Fill of [179]	
181	Linear to south of [179] Linear	
182	Dark greyish brown silty clay Fill of [181]	
183	Pit near to [177] Pit	
184	Dark greyish brown silty clay Fill of [183]	
185	Small section of ditch cut by [187] Ditch	
186	Mid greyish brown silty clay. Fill of [185]	
187	Ditch cutting [189] – may be contemporary Ditch	
188	Mid greyish brown silty clay. Fill of [187]	
189	Ditch cutting [187] Ditch	
190	Mid greyish brown clayey silt Fill of [189]	
191	Middle fill of [189]	
192	Lower fill of [189]	
193	Oval in plan with sharp top break of slope. Steep SW sides and gradual NE sides meeting at a flat bottom. Measures 1m x 0.98m x 0.22m. Pit – possibly associated with [195]	
194	Mid greyish brown clayey silt with occasional small to medium sub angular stone inclusions and occasional charcoal fragments. Occasional patches of redeposited natural. Max thickness 0.22m. Fill of pit [193]	

195	Oval shape in plan measuring 0.78m x 0.62m x 0.15m. Sharp top break of slope and a flat base. Pit with central hollow / squared stone – for door jamb?	
196	Mid greyish brown clayey silt with occasional patches of orange / yellow clay and occasional charcoal fragments. Fill of [195]	
197	Group of heavily truncated rocks – tumble with possible walls and entrance. On SE-NW alignment. Measures 7.7m x 3.3m at max. Possible remains of wall or tumble	
198	Friable compaction of dark brown black silty clay with no inclusions. Surrounds stone [197]. Fill surrounding wall [197]	
199	Oval shape in plan measuring 0.66m x 0.54m x 0.16m with gradually sloping sides, a gradual break of slope and a rounded base. Pit	
200	Friable in compaction, mixed natural and dark brown silty sandy clay. Fill of [199]	
201	Round in plan measuring 0.32m x 0.33m x 0.29m. Steep sided and curved base. Pit / post hole	
202	Dark brown silty clay Fill of [201]	
203	Circular in plan measuring 0.22m x 0.22m x 0.08m. Curved shallow sides and base. Pit	
204	Dark brown loose silty clay. Fill of [203]	
205	Circular in plan measuring 0.19m x 0.2m x 0.11m. Steep sided and a flat base. Pit / post hole	
206	Dark brown loose silty clay. Fill of [205]	
207	Circular shape in plan measuring 0.14m x 0.14m x 0.11m. Steep sided and a curved base. Pit / posthole	

208	Dark brown loose silty clay. Fill of [207]	
209	Circular shape in plan measuring 0.18m x 0.19m x 0.12m. Steep sided and curved base. Located near to [205] and [207]. Pit / post hole	
210	Dark brown loose silty clay. Fill of [209]	
211	Dark red subsoil with occasional charcoal impressions in top. Measures 0.55m x 0.8m x 0.03m. Hearth	
212	Dark red subsoil with occasional charcoal impressions on top. Measures 0.5m x 0.85m x 0.05m. Hearth	
213	Linear shape in plan on N-S alignment measuring 0.6m wide x 0.08m deep. Gently sloping sides meeting at a rounded base. Ditch	
214	Mid greyish brown silty clay. Fill of [213]	
215	Linear shape in plan measuring 0.52m wide x 0.12m deep. Gently sloping sides and a rounded base. Linear ditch	
216	Mid greyish brown silty clay. Fill of [215]	
217	Linear shape in plan measuring 0.71m wide x 0.14m deep. Gently sloping sides meet at a rounded base. Ditch next to pit cluster	
218	Mid greyish brown silty clay. Fill of [217]	
219	Circular shape in plan measuring 0.17m x 0.17m x 0.14m with steep sides and a curved base. Located next to linear [221]. Pit / post hole	
220	Dark brown loose silty clay. Fill of [219]	
221	Linear on NE-SW alignment measuring 4.5m x 0.75m x 0.42m. Parallel to [223].	

	Ditch	
222	Dark brown loose silty clay with charcoal and some bone inclusions. Fill of [221]	
223	Linear on NE-SW alignment measuring 4.5m x 0.22m x 0.27m. Runs parallel to [221]. Ditch	
224	Dark brown loose silty clay with charcoal inclusions. Fill of [223]	
225	Heat affected soil covering features [226], [228] and [230]. Deposit	
226	Measures 0.5m x 0.16m with sloping sides meeting at a narrow pointed base. Pit cut to NE edge of [225]	
227	Mid greyish brown silty clay. Fill of [226]	
228	Measures 0.3m x 0.22m. Steep sides and an almost flat base. Pit cut to S of [225]	
229	Mid greyish brown silty clay. Fill of [228]	
230	Linear shape in plan measuring 0.35m wide x 0.1m deep. Steep sided to the NE and gently sloping to the SW with a curved base. Ditch running N from [225]	
231	Mid greyish brown silty clay. Fill of [230]	
232	Curvilinear shape in plan measuring 9m x 0.48m x 0.05m. Curves from NW to the SE to the W. Boundary ditch	
233	Dark brown loose silty clay. Fill of [232]	
234	Linear measuring 7.8m x 0.6m x 0.14m. Ditch	
235	Dark brown black loose silty clay with animal bone inclusions. Fill of [234]	
236	Linear on S-N alignment measuring 3.4m x 0.35m x 0.06m. Cuts [234]. Shallow curved base.	

	Ditch	
237	Dark brown with light brown pockets of loose silty clay. Fill of [238]	
238	Meandering linear running through SW site from the S – W. Measuring 11.2m x 0.4m x 0.13m. Ditch	
239	Loose dark brown black silty clay with bone and charcoal inclusions. Fill of [238]	
240	Buried agricultural soil throughout site below topsoil (001), identified separately surrounding each stone feature as (049)-(053), (073), (092), (096), (149), (155) Old Agricultural soil	
241	Clean mid reddish brown sandy silt to the south of site below old agricultural soil (240), continuing below Structure 2 but no further. Colluviums	

APPENDIX 2: DRAWING REGISTER

Sheet No.	Drawing No.	Context	Description	Scale
1	1	[004]	E facing section terminus ditch [004]	1:10
1	2	[006]	NNW facing section of posthole [006]	1:10
1	3	[006]	Plan of posthole [006]	1:20
1	4	[004]	Plan of terminus of ditch [004]	1:20
1	5	[008] [010]	SE facing section of relationship slot for ditches [008] and [010]	1:10
1	6	[008] [010]	NW facing section of ditched [008] and [010]	1:10
1	7	[008] [010]	Plan of terminus / relationship slot of ditches [008] and [010]	1:20
1	8	[008] [010]	Plan of slots in ditches [008] and [010]	1:20
1	9	[016]	SW facing section pit [016]	1:10
1	10	[014]	ESE facing section pit [014]	1:10
1	11	[012]	S facing section pit [012]	1:10
1	12	[018]	SE facing section [018]	1:10
1	13	[020]	NE facing section post hole [020]	1:10
1	14	[022]	SSE facing section pit [022]	1:10
1	15	[024]	SSW facing section [024]	1:10

1	16	[029]	NNW facing section [029]	1:10
1	17	[027]	SW facing section [027]	1:10
1	18	[026]	NE facing section [026]	1:10
1	19	[032]	SE facing section [032]	1:10
1	20	[031]	SW facing section [031]	1:10
2	21	[038]	E facing section pit [038]	1:10
2	22	[043]	N facing section pit [043]	1:10
2	23	[045]	NNW facing section pit [045]	1:10
2	24	[047]	W facing section pit [047]	1:10
2	25	[058]	NW facing section pit [058]	1:10
2	26	[054]	SSW facing section pit [054]	1:10
2	27	[056]	SW facing section pit [056]	1:10
2	28	[060]	N facing section pit [060]	1:10
2	29	[061] [070]	N facing section of pits [061] and [070]	1:10
2	30	[062]	E facing section of pit [062]	1:10
2	31	[064]	NE facing section pit / posthole [064]	1:10
2	32	[066]	E facing section pit [066]	1:10
3	33	[033] – [037]	Plan of stone features [033], [034], [035], [036] and [037]	1:20
4	34	[106]	SW facing section through linear [106]	1:10
4	35	[114]	NE facing section through linear [114]	1:10
4	36	[075]	N facing section through linear [075]	1:10
4	37	[077]	S facing section through linear [077] – Slot 1	1:10
4	38	[077]	N facing section through linear [077] – Slot 2	1:10
4	39	[079]	N facing section through linear [079] – Slot 2	1:10
4	40	[081]	S facing section through linear [081]	1:10
4	41	[079]	NW facing section through linear [079] - Slot 1	1:10
4	42	[079]	NE facing section through linear [079] – Slot 3	1:10
4	43	[083]	N facing section [083]	1:10
4	44	[085]	N facing section [085]	1:10
4	45	[091]	E facing section [091]	1:10
4	46	[087]	N facing section [087]	1:10
4	47	[108]	E facing section linear [108] terminus	1:10
4	48	[108] [110]	Dog legged section relationship slot through [108] and [110]	1:10
4	49	[112]	NE facing section linear [112] terminus	1:10
4	50	[139]	SW facing section of [139]	1:10
5	51	[121]	W facing section through linear [121]	1:10
5	52	[117]	N facing section through linear [117]	1:10

5	53	[117]	S facing section through linear [117] – Slot 1	1:10
5	54	[119]	E facing section through linear [119]	1:10
5	55	[117]	N facing section through linear [117] – Slot 2	1:10
5	56	[123]	N facing section through linear [123]	1:10
5	57	[125] [128] [117]	N facing section through [125], [128] and [117]	1:10
4	58	[141]	SW facing section of ditch [141]	1:10
4	59	[143]	SW facing section pit [143]	1:10
4	60	[147]	N facing section ditch [147]	1:10
5	61	[130]	S facing section through linear [130] – terminus	1:10
5	62	[130]	NW facing section through linear [130] – terminus	1:10
5	63	[133]	W facing section through slot in linear [133]	1:10
5	64	[134]	S facing section of sub circular pit [134]	1:10
5	65	[136]	SW facing section through sub circular pit [136]	1:10
4	66	[153]	NW facing section of pit [153]	1:10
4	67	[151]	Terminus of [151]	1:10
4	68	[151]	NE facing section of [151]	1:10
4	69	[157] [112]	E facing section of [157] and [112]	1:10
4	70	[112]	N facing profile of [112] terminus	1:10
4	71	[151]	SE facing profile [151]	1:10
4	72	[112]	N facing section of [112]	1:10
4	73	[161]	SE facing section [161]	1:10
4	74	[163]	Terminal profile of [163]	1:10
4	75	[163]	NE facing section of [163]	1:10
6	76	Structure 1	Plan of Structure 1	1:20
4	77	[146]	Terminal profile of [146]	1:10
4	78	[146] [175]	N facing section of [175] and [146]	1:10
4	79	[146]	NW facing section of [146]	1:10
4	80	[183] [177]	NE facing section [183] and [177]	1:20
4	81	[179]	SW facing section [179]	1:10
4	82	[181]	Terminal profile of [181]	1:10
4	83	[181]	NE facing section [181]	1:10
7	84	[150]	Plan of stone feature [150]	1:20
7	85	[156]	Plan of stone feature [156]	1:20
8	86	[197]	Plan of tumble / possible wall [197]	1:20
9	87	Structure 2 [072]	Plan of Structure 2 and [072]	1:20
10	88	Structure 2	N facing section through Structure 2	1:20

10	89	[172] [174]	W facing section of ditches [172] and [174]	1:10
10	90	[223]	SE facing section of ditch [223]	1:10
11	91	[212]	N facing section through [212]	1:10
11	92	[211]	NW facing section through [211]	1:10
11	93	[213]	NNW facing section of [213]	1:10
11	94	[215]	E facing section of [215]	1:10
11	95	[217]	N facing section of [217]	1:10
11	96	[225] [226]	SSE facing section of [225] and [226]	1:10
11	97	[228]	SW facing section of [228]	1:10
11	98	[230]	NNW facing section of [230]	1:10
11	99	[189]	S facing section of [189]	1:10
11	100	[225] [226] [228] [230]	Plan of [225], [226], [228] and [230]	1:20
12	101	[199]	SW facing section pit [199]	1:10
12	102	[201]	E facing section of pit [201]	1:10
12	103	[203]	S facing section pit [203]	1:10
12	104	[209]	SW facing section pit [209]	1:10
12	105	[219]	NE facing section pit [219]	1:10
12	106	[234]	E facing section linear [234]	1:10
12	107	[232]	SE facing section [232]	1:10
12	108	Structure 1 [095] [166]	SSW facing section of Structure 1, [095] and hearth [166]	1:10
12	109	[221] [223]	E facing section of ditches [221] and [223]	1:10
12	110	[205]	SW facing section [205]	1:10
12	111	[207]	S facing section pit [207]	1:10
12	112	[240]	NW facing section linear [240]	1:10
12	113	[238]	S facing section linear [238]	1:10

APPENDIX 3: SMALL FINDS REGISTER

No.	Context	Description	Material Code
1	040	Small Fragment of white Ce	Ce
2	040	Animal bone fragments	Bo
3	053	Spindle whorl found in topsoil over [037]	St
4	046	Animal bone	Bo
5	048	Animal bone	Bo

6	001	Bones in topsoil	Bo
7	049	Animal bones	Bo
8	050	Animal bones	Bo
9	052	Animal bones	Bo
10	053	Animal bones	Bo
11	061	Animal bones	Bo
12	069	Animal bones	Bo
13	067	Animal bones	Bo
14	067	Iron half ring	Fe
15	015	Bone	Bo
16	073	Whetstone with hole	St
17	001	Spoil heap find probably related to wall [072]	Ce
18	084	Bone	Bo
19	099	Bone	Bo
20	109	Animal bone	Bo
21	113	Animal bone	Bo
22	109	Animal bone in relationship slot with linear [110]	Bo
23	078	Bone	Bo
24	092	Animal bone	Bo
25	092	Modern ceramic	Ce
26	092	Glass fragments	Gl
27	092	Worked stone objects x3	St
28	092	Cannel coal fragments	Org
29	152	Animal bone	Bo
30	113	Animal bone	Bo
31	155	Rim and base x2	Ce
32	155	Slag	In
33	155	Animal bone	Bo
34	051	Lead	Me
35	164	Animal bone	Bo
36	145	Animal bone	Bo
37	182	Animal bone	Bo
38	194	Animal bone and teeth	Bo
39	196	Stone setting for door jamb ?	St
40	198	Glazed sherd of medieval pot	Ce

41	198	Quartz, primary debitage?	St
42	198	Slag x4	Me
43	198	Bone x10	Bo
44	198	Shards of glass with yellow paint	Gl
85	096	Quern	St
86	096	Quern	St
87	096	Whetstone	St
88	096	Cup marked stone	St
89	096	Stone with groove	St
90	191	Animal bone	Bo
91	192	Animal bone	Bo

APPENDIX 4: PHOTOGRAPHIC REGISTER

Digital camera 1:

No.	Description	Taken From
1	E facing section of terminus ditch [004]	E
2	Plan of ditch [004]	E
3	NNW facing section of post hole [006]	NNW
4	Plan of posthole [006]	NNW
5	Plan of ditches [008] and [010] and relationship slot	SE
6	NW facing sections of ditches [008] and [010]	NW
7-8	Artefact ID photo for Dawn	-
9	SW facing section pit [016]	SW
10	Plan view pit [016]	SW
11	ESE facing section pit [014]	ESE
12	Mid ex plan pit [014]	ESE
13	S facing section pit [012]	S
14	Mid ex plan pit [012]	S
15	SE facing section pit [018]	SE
16-17	Mid ex plan pit [018]	SE
18-19	NE facing section pit [020]	NE
20	Mid ex plan pit [020]	NE
21	PX pit [020]	NE

22	PX pit [012]	S
23	PX pit [014]	ESE
24	PX pit [016]	SW
25	SW facing section of ditch [024]	SW
26	Plan of ditch [024]	SW
27	NW facing section of posthole [027]	NW
28	SE facing section of ditch [026]	SE
29	NE facing section of ditch [029]	NE
30	Plan of posthole [027 and ditches [026] and [029]	SE
31	Plan of relationship of truncation [024]	NW
32	NW facing section of ditch [031]	NW
33	SE facing section of posthole [032]	SE
34	Plan of ditch [031] and posthole [032]	NW
35	General shot of features [026] and [032]	NW

Digital camera 2:

No.	Description	Taken From
36	Register shot	-
37	E facing section of pit [038]	E
38	E facing section of pit [038]	E
39	General view of pit [038]	N
40-46	Circular stone features [035]	Var
47-55	Curving stone wall / platform [036]	Var
56-57	General shot stone features [034], [035], [036] and [037]	SW
58	General view pit [038]	S
59	N facing section of [043]	N
60	General view of [043]	W
61	SSE facing section pit [022]	SSE
62	Mid ex plan pit [022]	SSE
63	NNW facing section of pit [045]	NNW
64	General view of pit [045]	NNW
65-67	General shots of stone wall [034]	Var
68	W facing section of pit [047]	W
69	General view of pit [047]	N
70-71	SSW facing section pit [054]	SSW
72-73	SW facing section pit [056]	SW
74	NW facing section of pit [058]	NW
75	Mid ex plan pit [058]	NW

76-79	Shot of Structure [037]	Var
80	N facing section pit [060]	N
81	General view of pit [060]	E
82	E facing section of pit [062]	E
83	General view of pit [062]	E
84	NE section of [064]	NE
85	General view of [064]	NE
86	E facing section of [066]	E
87-89	General view of [066]	E
90	N facing section pits [068] and [070]	N
91	General view of pits [068] and [070]	E
92	S facing section pit [022]	S
93	General view of stone feature [033]	S
94	General view of stone feature [033]	W
95	General view of stone feature [033]	S
96	West facing section linear [106]	E
97	E facing section linear [106]	W
98	Over top view of [114]	N
99	W facing view of [114]	E
100	Section of [114]	E
101	E facing section linear [108]	E
102	Mid ex plan terminus linear [108]	E
103	General shot liner [108] and [110]	SE
104	Relationship slot through [108] ad [110]	N
105	Mid ex plan relationship slot [108] and [110]	N
106	General shots linear [108] and [110]	SE
107	W side of bulk E facing	W
108	W side of bulk facing west	E
109	Ne facing section linear [112]	NE
110	Mid ex plan terminus NE [112]	NE
111	General sots NE terminus [112]	NE
112	Overhead of [106] west of bulk	N
113	General shot looking west from bulk	E
114	W facing section linear [106]	W
115	N facing section [075]	N
116	General view [075]	N
117	S facing section of [077]	S
118	General view of [077]	S

119	N facing section of [079]	W
120	General view [079] and [081]	W
121	S facing section [081]	S
122	General view [081]	S
123	N facing section [083]	N
124	Plan of [083]	-
125	W facing section [085]	W
126	Plan of [085]	-
127	NW facing section [087]	NW
128	Plan of [087]	-
129	General view [079] and [081]	N
130	Plan view of [089]	N
131	W facing section [101] and [132]	W
132	S facing section [103]	S
133	NW facing section [105]	W
134	W facing section through [121]	W
135	N facing section through [117]	N
136	E facing section [119]	E
137	S facing section through [117]	S
138	N facing section through [123]	N
139	General view of [125] and [128]	N
140	General view of [125]	E
141	General view of [128]	E
142	SW facing section [129]	SW
143	General view of [139]	NW
144-157	General shots of stone structures extending SW from NE trench edge	Var
158	N facing section ditch [141]	N
159	SW facing section ditch [141]	SW
160	General view of [141]	S
161-179	General view of Structure 2	Var
180-187	General shots of worked stones within Structure 2	-
188	S facing section [143]	S
189	Plan shot [143]	S
190	S facing section through [130]	S
191	N facing section through [130]	N
192	General view of curvilinear [130]	E
193	W facing section through [138]	W

194	General view of linear [138]	N
195	SE facing section through [134]	SE
196	Plan view of [134]	-
197	S facing section through [136]	S
198	Plan view of [136]	-
199	N facing section ditch [147]	N
200-201	General view of ditch [147]	Var
202	NW facing relationship slot of [147] and [151]	NW
203	SW facing relationship slow of [147] and [151]	SW
204	N facing shot of slot in [146]	N
205	General view of [150]	SW
206	General view of [150]	SE
207	General view of [150]	NE
208	NW facing section of [153]	NW
209	General view of [153]	NE
210	NW facing section of [151] and [112] relationship	NW
211	SW facing section of [151] and [112] relationship	SW
212	NE facing section [151]	NE
213	General view of [151] terminus	SW
214	General view of [151] terminus	SW
215	General view of spread [099]	N
216	E facing section of [157] and [112]	SE
217	General view of pit [157]	SW
218	General view of [156]	SE
219	General view of [156]	NW
220	General view of [156]	NE
221	Overview of [156]	NW
222	General view of [072]	SW
223	General view of [072]	NW
224	General view of [072]	NE
225	General view of [072]	SW
226-227	General view of [159]	Var
228	N facing section [112]	N
229-231	General view of ditch [112]	Var
232	SE facing section of [161]	SE
233	General view of [161]	SE
234	E facing section [163]	E
235	General view of [163]	E

236	W facing section [163]	W
237	NE facing section [163]	NE
238	General view of [163]	SW
239	NE facing section [146] terminus	NE
240	N facing section [175] and [146]	N
241	S facing section [175] and [146]	S
242	NW facing section [146]	NW
243-244	General view of [146] and [175]	Var
245	E facing section terminus [177]	E
245	SW facing section [177]	SW
247	NE facing section [177] and [183]	NE
248	SW facing section [179]	SW
249	ENE facing section [181] at terminus	ENE
250	ENE facing section [181]	ENE
251	General view of [177] to [183]	ENE
252	General view of [177] to [183]	NE
253	General view of [177] to [183]	WNW
254-256	General view of SF within [195]	Var
257	N facing section [189] terminal	N
258	N facing section [185] terminal	N
259	General view of [185]	-
260	NW facing section [187] and [189]	NW
261	General view of [187] [185] and [189]	N
262	S facing section [187] and [189]	S
263	N facing section [189]	N
264	Pits [193] and [195]	W
265	NW facing section pit [193]	NW
266	Plan view pit [193]	SW
267	SW facing section pit [195]	SW
268	Plan view pit [195]	W
269	General view pits [103] and [195]	N
270	General view of features [197]	S
271	NW view of possible wall [197]	NW
272	NE view of possible wall [197]	NE
273	SE view of possible wall [197]	SE
274	SW facing section pit [199]	SW
275	Plan of pit [199]	SW
276	Pre-ex view of in situ burning [211]	W

277	Pre-ex view of in situ burning [212]	NW
278	N facing section through [212]	N
279	NW facing section through [211]	NW
280	Plan of [201]	E
281	W facing section of [201]	E
282	S facing section [203]	S
283	S facing section [205]	S
284	S facing section [207]	S
285	SW facing section [209]	SW
286	Plan view of [201], [203], [205] [207] and [209]	SE
287	S facing section [213]	S
288	E facing section [215]	E
289	General view of [215]	E
290	General view of [213]	N
291	NE facing section pit [219]	NE
292	Pre-ex of [221] and [223] and intersection	S
293	Pre-ex of [221] and [223] and intersection	SE
294-295	Pre-ex view of hearth	Var
296-298	Pre-ex view of [225] with stone removed	Var
299	WSW facing section Structure 1	WSW
300-302	WSW facing section Structure 1	WSW
303-304	S facing section of [225] ad [226]	-
305	SW facing section [228]	S
306	N facing section through Structure 1	NNW
307	N facing section through Structure 1	N
308	N facing section through Structure 1	N
309	N facing section through Structure 1	N
310	N facing section through Structure 1	N
311	East facing section of [221] and [223]	N
312	SE facing section [232]	SE
313	General view [232]	SE
314	E facing section [234]	E
315	General view [234]	E
316	SW facing section ditches [172] and [174]	SW
317	Plan of [172] and [174] ditches	SW
318	NW facing section of [172] terminus	NW
319	Plan of [172] terminus	NW
320	General shot of ditches [172] and [174]	W

321	General shot of ditches [172] and [174]	W
322	SE facing section ditch [223] terminus	SE
323	Plan of ditch [223] terminus	SE
324	General shot ditch [223]	SE
325	N facing section	N
326	General view [236]	N
327	S facing section	S

APPENDIX 5: SAMPLE REGISTER

Context	Quantity (Litres)
003	10L
005	10L
009	10L
007	10L
011	5L
013	5L
015	10L
017	10L
019	10L
021	10L
023	10L
025	10L
028	10L
030	10L
039	10L
040	20L
044	10L
046	20L
048	10L
055	20L
057	10L
059	10L
061	20L
063	10L
065	20L
067	20L

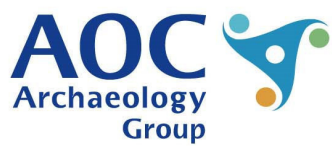
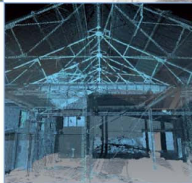
069	5L
071	10L
078	20L
082	10L
084	10L
086	10L
100	20L
102	10L
104	10L
107	10L
109	10L
113	20L
113	20L
115	20L
116	20L
118	20L
120	20L
124	20L
127	10L
129	20L
133	20L
135	20L
140	10L
142	20L
144	10L
145	20L
148	10L
152	20L
154	20L
160	5L
162	5L
164	20L
165	20L
171	10L
173	10L
178	10L
182	20L
186	10L

188	20L
190	10L
191	10L
192	10L
194	10L
196	10L
200	10L
202	10L
204	10L
206	10L
208	10L
210	10L
211	10L
212	10L
214	10L
216	10L
218	10L
220	10L
220	10L
222	10L
224	10L
225	10L
227	10L
229	10L
231	10L
233	10L
235	10L
237	10L
239	10L

APPENDIX 5: 'Discovery and Excavation in Scotland' Report

LOCAL AUTHORITY:	City of Edinburgh Council
PROJECT TITLE/SITE NAME	Land North of Wester Dalmeny Cottages
PROJECT CODE:	AOC 23948
PARISH:	Dalmeny
NAME OF CONTRIBUTOR:	Anne-Aymonne Marot and Rob Engl
NAME OF ORGANISATION:	AOC Archaeology Group
TYPE(S) OF PROJECT:	Archaeological Topsoil Strip
NMRS NO(S)	None
SITE/MONUMENT TYPE(S):	N/A
SIGNIFICANT FINDS:	N/A
NGR (2 letters, 6 figures)	NT 14330 77515
START DATE (this season)	01 st August 2017
END DATE (this season)	28 th August 2017
PREVIOUS WORK (incl. DES ref.)	Archaeological Evaluation
MAIN DESCRIPTION: (May include information from other fields)	<p>(NARRATIVE) Following the completion of an initial archaeological evaluation undertaken by AOC Archaeology Group in July 2017 further works consisting of a monitored topsoil strip and archaeological excavation were carried out prior to a residential development on land north of Wester Dalmeny Cottages, Dalmeny, Edinburgh (NGR; NT 14330 77515).</p> <p>The works involved the monitored topsoil stripping of a targeted area measuring 7000m². The evaluation had revealed a substantial over-burden of topsoil ranging from 0.60m to 1.70m in depth. Numerous archaeological deposits and features were revealed including pits, ditches and dry-stone structural features of unknown date.</p> <p>The topsoil strip revealed a further 122 features illustrating two probable phases of occupation. Initial activity was represented by a suite of cut features including pits, post-holes, and linear/curvilinear ditches cut into the natural. These features were overlain by an early agricultural soil. This deposit contained the truncated remains of several dry-stone structures including two rectangular buildings and fragmentary walls.</p> <p>The old agricultural soil and the dry-stone structures were in-turn overlain by a deep, improved topsoil ranging from 0.40m to 1.40m in depth. This deposit contained numerous sherds of modern ceramic.</p> <p>A small assemblage of six coarse stone artefacts of uncertain date was recovered during the works. These consisted of two whetstones, two probable rotary quern/socket stones and a cup and ring marked stone.</p>

	<p>Several sherds of medieval white gritty ware and a fragment of Samian ware bowl with <i>graffito</i> were recovered from the buried agricultural soil.</p> <p>A substantial assemblage of animal bones, periwinkle and whelk was obtained from the archaeological features.</p> <p>Though the site awaits a programme of secure dating, the largely aceramic nature of the site suggests a probable prehistoric to early historic occupation.</p> <p>Due to the significance within the development area it is recommended that a post-excavation research design (PERD) be produced. The PERD will define the scope and scale of post-excavation works necessary to adhere to the fieldwork findings, and to produce a final report suitable for publication.</p>
PROPOSED FUTURE WORK:	Strip and Map
CAPTION(S) FOR ILLUSTRS:	---
SPONSOR OR FUNDING BODY:	Westpoint Homes Ltd.,
ADDRESS OF MAIN CONTRIBUTOR:	Edgefield Road Industrial Estate, Loanhead, Midlothian, EH20 9SY
EMAIL ADDRESS:	admin@aocarchaeology.com
ARCHIVE LOCATION (intended/deposited)	Archive to be deposited in NMRS



www.aocarchaeology.com

AOC Archaeology Group, Edgefield Industrial Estate, Edgefield Road, Loanhead EH20 9SY

tel: 0131 440 3593 | fax: 0131 440 3422 | e-mail: admin@aocarchaeology.com