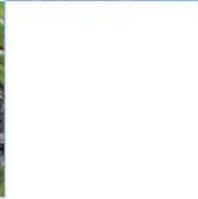
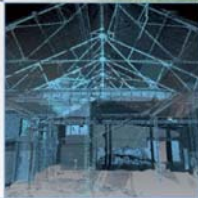


# Old Craighall, East Lothian: Archaeological Evaluation Data Structure Report

AOC 23881  
30<sup>th</sup> August 2017



# Old Craighall, East Lothian: Archaeological Evaluation Data Structure Report

---

**On Behalf of:** Cruden Homes  
Baberton House  
Westburn Avenue  
Edinburgh  
EH14 3HN

**National Grid Reference (NGR):** NT 3353 7045

**AOC Project No:** 23881

**Planning Application No:** 13/01020/PPM

**OASIS No:** aocarcha1-294280

**Prepared by:** Kevin Paton

**Date of Fieldwork:** 15<sup>th</sup> – 16<sup>th</sup> August 2017

**Date of Report:** 30<sup>th</sup> August 2017

This document has been prepared in accordance with AOC standard operating procedures.

**Author:** Kevin Paton

**Date:** 30<sup>th</sup> August 2017

**Approved by:** Lindsay Dunbar

**Date:** 30<sup>th</sup> August 2017

**Draft/Final Report Stage:** Draft

**Date:** 30<sup>th</sup> August 2017

**Enquiries to:** AOC Archaeology Group  
Edgefield Industrial Estate  
Edgefield Road  
Loanhead  
EH20 9SY

Tel. 0131 440 3593  
Fax. 0131 440 3422  
e-mail. [edinburgh@aacarchaeology.com](mailto:edinburgh@aacarchaeology.com)



## Contents

	<b>Page</b>
List of Illustrations .....	2
List of Plates .....	2
List of Appendices .....	2
<b>ABSTRACT .....</b>	<b>3</b>
<b>1 INTRODUCTION .....</b>	<b>4</b>
1.1 Background .....	4
1.2 Site Location .....	4
1.3 Historical Background.....	4
<b>2 OBJECTIVES.....</b>	<b>5</b>
<b>3 METHODOLOGY.....</b>	<b>5</b>
<b>4 RESULTS.....</b>	<b>6</b>
<b>5 CONCLUSION AND RECOMENDATIONS .....</b>	<b>7</b>
<b>6 REFERENCES.....</b>	<b>7</b>
6.1 Bibliographic references .....	7
6.2 Cartographic references .....	7
<b>Appendix 1: Evaluation Trench Descriptions .....</b>	<b>9</b>
<b>Appendix 2: Photographic Register .....</b>	<b>11</b>
<b>Appendix 3: <i>'Discovery and Excavation in Scotland' Report</i>.....</b>	<b>12</b>

## List of Illustrations

Figure 1: Site location plan

Figure 2: Extract from 1853 Ordnance Survey

Figure 3: Evaluation trench location plan

## List of Plates

Plate 1: General view of soil horizons within Trench 3

Plate 2: General view of rubble drains within Trench 8

## List of Appendices

Appendix 1: Evaluation Trench Descriptions

Appendix 2: Photographic Register

Appendix 3: *'Discovery and Excavation in Scotland'* Report

## ABSTRACT

---

An archaeological evaluation was undertaken by AOC Archaeology Group prior to a residential development at Old Craighall, East Lothian.

The evaluation consisted of 250 linear metres of trenching across the development area. The topsoil on site was a dark greyish brown sandy loam overlying a yellow clay and orangey brown sand and gravel.

The north western half of the site had been covered by modern made ground up to 1 m thick that relates to the recent construction of residential properties adjacent to the site. The only archaeological features revealed by the evaluation were rubble drains and agricultural furrows relating to post medieval and modern agriculture.

No significant archaeological features or artefacts were revealed throughout the evaluation. It is recommended that no further archaeological work be conducted within the development area. This recommendation will require the approval of East Lothian Council, who are advised on archaeological matters by the East Lothian Council Archaeology Service.

# 1 INTRODUCTION

## 1.1 Background

1.1.1 An archaeological evaluation was required by Cruden Homes prior to a residential development within Old Craighall, East Lothian. The scope of the works was determined by East Lothian Council as advised on archaeological matters by the East Lothian Council Archaeology Service (ELCAS). The works were conducted according to the terms of a *Written Scheme of Investigation* (AOC 2017), approved on behalf of East Lothian Council by ELCAS and in accordance with *Scottish Planning Policy* (Scottish Government 2014) and *PAN 2/2011 Planning And Archaeology* (Scottish Government 2011).

## 1.2 Site Location

1.2.1 The development area lies to the south east side of Old Craighall Road and wraps around the south east side of a small modern residential estate (Figure 1; NGR NT 3353 7045). To the south east of the site is an arable field with further fields lying to the north east. On the south west side the development area is defined by the perimeter wall of Monkton House. The site is currently an area of former pasture and contains two field boundaries within it.

## 1.3 Historical Background

1.3.1 The northern portion of the site closest to Old Craighall Road is shown on the 1853 1<sup>st</sup> Edition Ordnance survey map as being part of the Monkton House Gardens (Figure 2; HER No. MEL9219) with various walls seen to lie within the development area. The late 19<sup>th</sup> century second edition Ordnance Survey map shows much the same layout however with a couple of smaller walls subdividing the area. Towards the end of the 20<sup>th</sup> century a more modern structure can be seen in the southwestern corner of the site which has now been demolished.

1.3.2 Beyond the limits of the development area the NMRS and local SMR databases show records for A-Listed Monkton House and its boundary wall and sundial (HER No. MEL4593). To the northeast of the development area there are noted cropmarks which may denote cairns or ring ditch structure (HER No. MEL233).

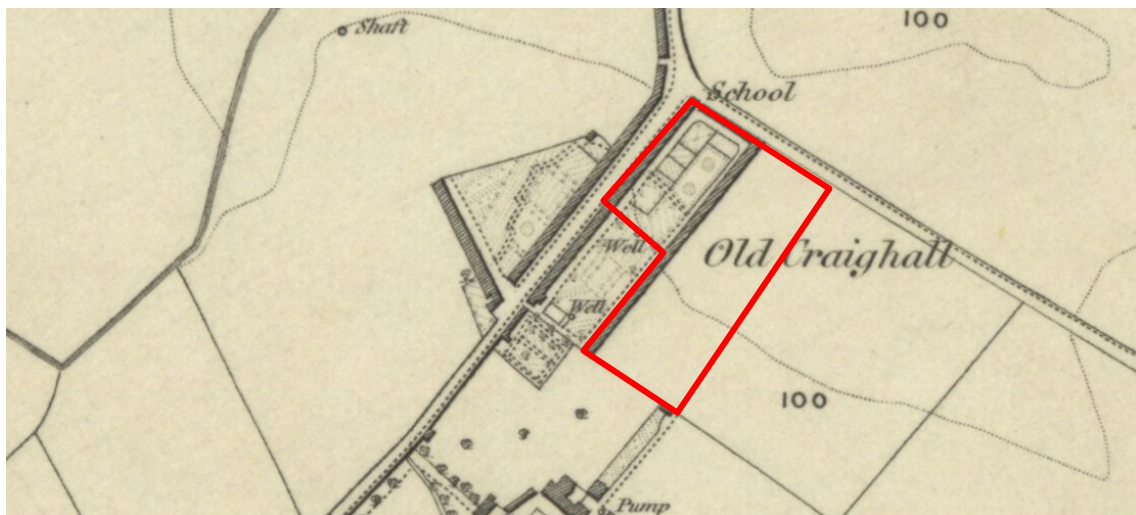


Figure 2: Extract from 1853 Ordnance Survey

## 2 OBJECTIVES

2.1 The objectives of the archaeological evaluation were:

- i) to determine and assess the character, extent, condition, quality, date and significance of any buried archaeological remains within the proposed development area through evaluation trenching;
- ii) to advise and implement an appropriate form of mitigation, such as excavation, post-excavation analyses and publication, given the infeasibility of preserving the archaeological material *in situ*, should significant archaeological remains be encountered.

## 3 METHODOLOGY

3.1 The evaluation consisted of 8 trenches of varying length and alignment, equating to 500 m<sup>2</sup> of linear trench (Figure 3). The trenches were excavated using a 13 tonne tracked excavator equipped with bladed ditching bucket, and operating under the constant supervision of an experienced field archaeologist. Each trench was recorded using AOC *pro forma* trench record sheets, photographed, and any potential features investigated further to assess their character and date.

3.2 A previously unknown cast iron pipe was located within Trench 1 and an electric cable was picked up that runs from the overhead power cables towards the adjacent housing estate (see Figure 3 for approximate locations). These services were close enough to the site boundaries to minimise their impact on the trenching total.



Plate 1: General view of soil horizons within Trench 3

## 4 RESULTS

4.1 All archaeological works were conducted between the 15<sup>th</sup> and 16<sup>th</sup> August 2017. Weather conditions were fair throughout the course of the work conducted and archaeological visibility was good. The various data gathered from the evaluation are presented as a series of appendices:

Appendix 1: Evaluation trench descriptions

Appendix 2: Photographic Register;

Appendix 3: '*Discovery and Excavation in Scotland*' entry

4.2 The topsoil throughout the development area was a dark greyish brown sandy loam that measured between 0.36 m and 0.95 m in depth. This topsoil was covered by a modern made ground in the north western half of the site that relates to the dumping of construction debris and soil from the adjacent residential estate. An earlier topsoil or plough soil was also present throughout site consisting of a mid brown sandy clay up to 0.45 m in depth. These soils overlay a predominantly orangey brown sandy gravel with areas of yellowish sandy clay in the western corner (Plate 1).

4.3 Rubble drains were revealed within Trenches 4 to 8 that were mainly aligned NE-SW (Plate 2). The furrows were only visible within Trench 7 and measured 1.0 m to 1.2 m wide and up to 0.1 m deep, with fragments of modern white ceramics throughout.



Plate 2: General view of rubble drains in Trench 8



## 5 CONCLUSION AND RECOMENDATIONS

- 5.1 The archaeological evaluation at Old Craighall has shown that the area is sterile of significant archaeology. It is recommended that no further archaeological works be conducted.
- 5.2 These recommendations will require the approval of East Lothian Council, who will determine the scope of any further work, and who are advised on archaeological matters by the East Lothian Council Archaeology Service.

## 6 REFERENCES

### 6.1 Bibliographic references

AOC 2017 *Old Craighall, East Lothian: Archaeological Evaluation Written Scheme of Investigation*.  
Unpublished client report

Scottish Government 2014 Scottish Planning Policy.

Scottish Government 2010 PAN 2/2011 Planning & Archaeology.

### 6.2 Cartographic references

1853 Ordnance Survey *Edinburghshire Sheet 7*

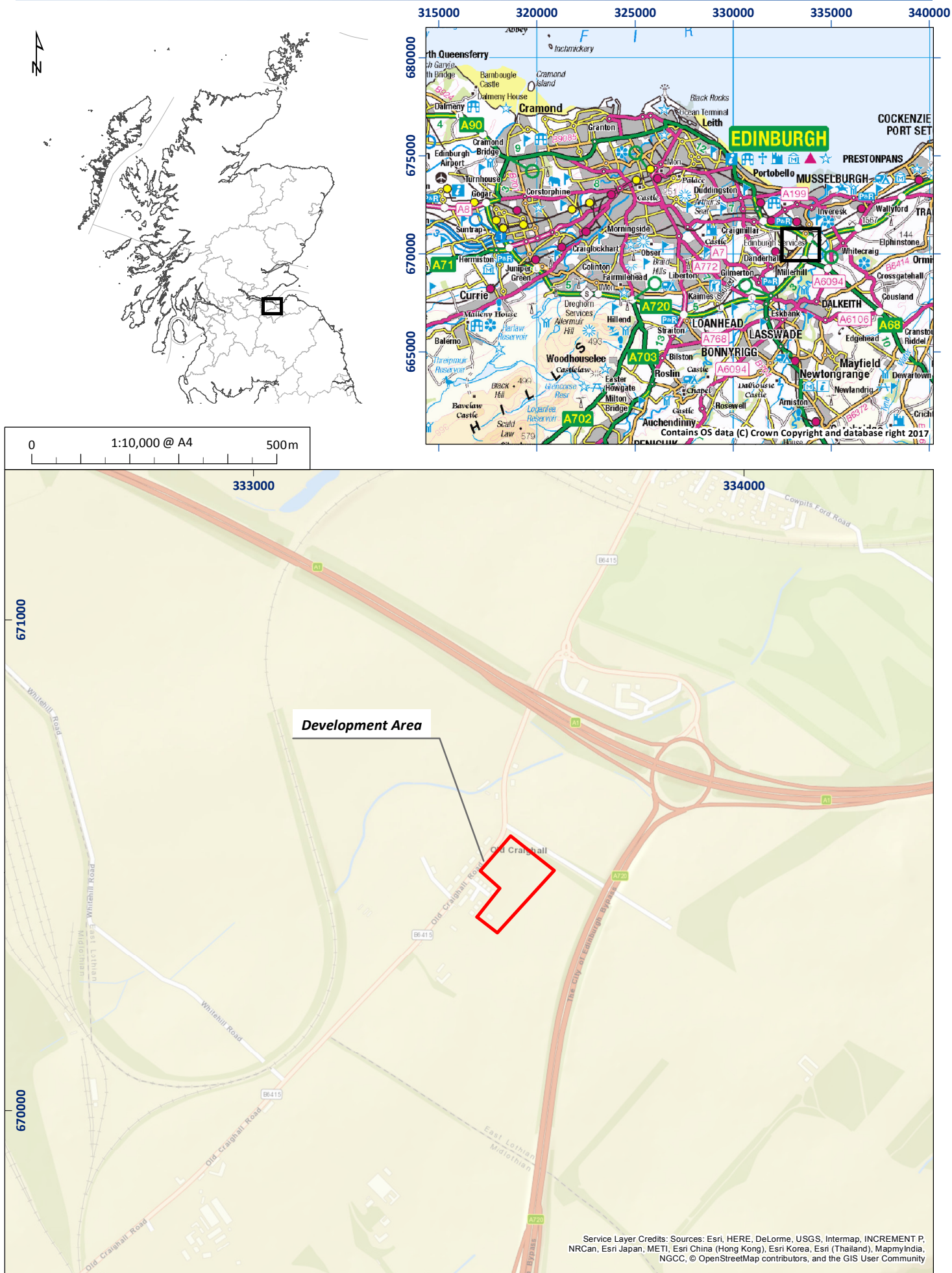
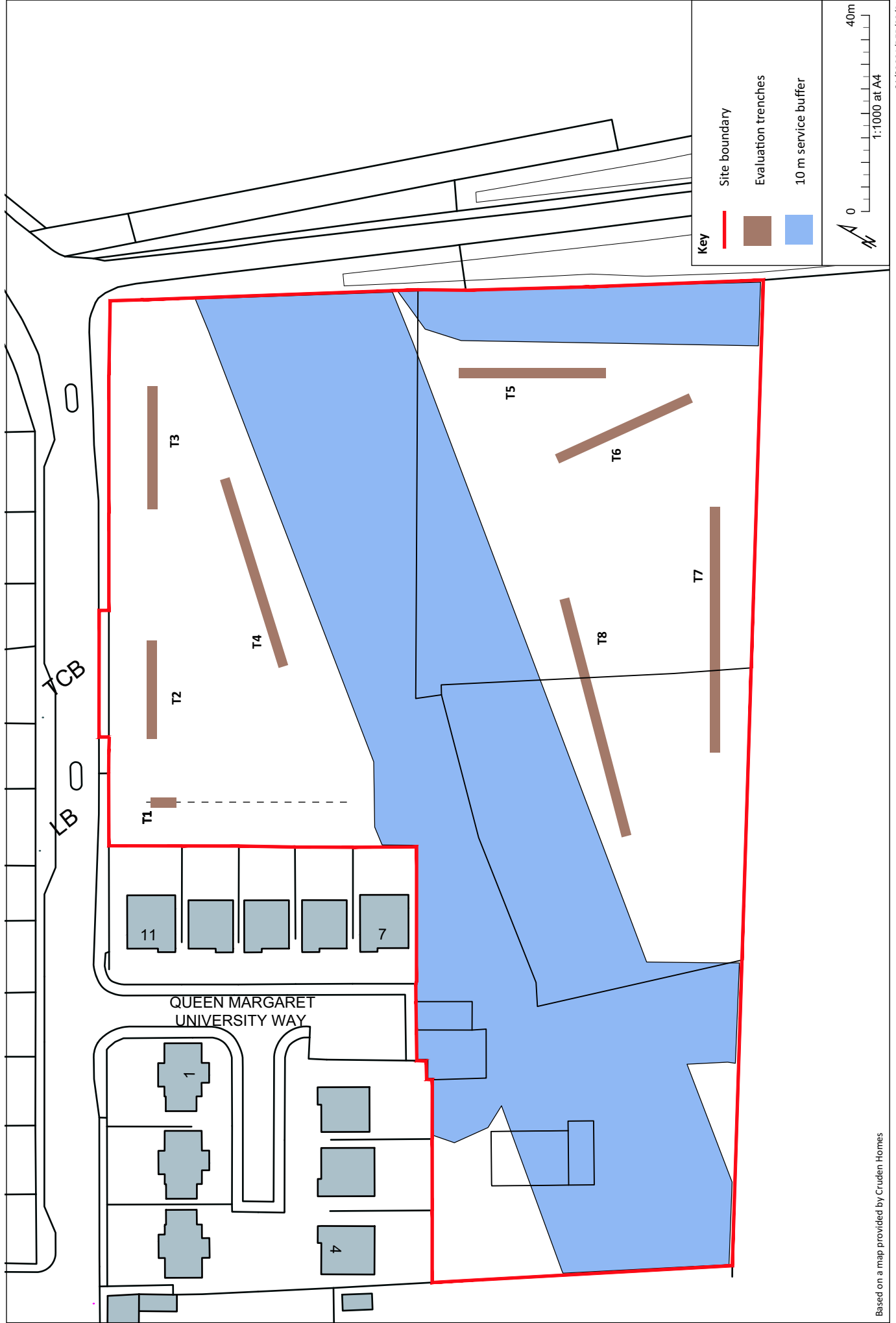


Figure 1: Site location plan



Based on a map provided by Cruden Homes

Figure 2: Evaluation trench location plan

01/22881/REP/02/01

---

# **Old Craighall, East Lothian: Archaeological Evaluation Data Structure Report**

## **Section 2: Appendices**

## Appendix 1: Evaluation Trench Descriptions

### Trench 1

<i>Dimensions</i>	5 m by 2 m
<i>Excavated Area</i>	10 m <sup>2</sup>
<i>Excavated Orientation</i>	NW to SE
<i>Soil make-up</i>	Made ground – dark greyish black soil, rubble and modern rubbish – 0.9 m Former topsoil – dark brown sandy clay and stone – 0.4 m (+)
<i>Natural Subsoil</i>	Not reached
<i>Significant Features</i>	None
<i>Other Features</i>	Modern cast iron pipe aligned NW to SE
<i>Finds</i>	None

### Trench 2

<i>Dimensions</i>	20 m by 2 m
<i>Excavated Area</i>	40 m <sup>2</sup>
<i>Excavated Orientation</i>	SW to NE
<i>Soil make-up</i>	Made ground – dark greyish black soil, rubble and modern rubbish – 1.05 m Former topsoil – dark brown sandy clay and stone – 0.95 m
<i>Natural Subsoil</i>	Yellowish brown clay until 5 m then orangey brown clayey sand
<i>Significant Features</i>	None
<i>Other Features</i>	None
<i>Finds</i>	None

### Trench 3

<i>Dimensions</i>	25 m by 2 m
<i>Excavated Area</i>	50 m <sup>2</sup>
<i>Excavated Orientation</i>	NE to SW
<i>Soil make-up</i>	Made ground – dark greyish black soil, rubble and modern rubbish – 0.43 m Former topsoil – dark brown sandy clay and stone – 0.67 m
<i>Natural Subsoil</i>	Yellowish brown clayey sand until 9 m then orangey brown clayey sand and gravel
<i>Significant Features</i>	None
<i>Other Features</i>	None
<i>Finds</i>	None

### Trench 4

<i>Dimensions</i>	40 m by 2 m
<i>Excavated Area</i>	80 m <sup>2</sup>
<i>Excavated Orientation</i>	S to N
<i>Soil make-up</i>	Made ground (1) – dark brown sandy silt and modern rubble from 0 m to 14 m – 0.8 m Made ground (2) – dark greyish black soil, rubble and modern rubbish – 0.6 m Former topsoil – dark brown sandy clay and stone – 0.5 m
<i>Natural Subsoil</i>	Yellowish brown clayey sand until 14 m then orangey brown sand and gravel
<i>Significant Features</i>	None
<i>Other Features</i>	Rubble drain at 0 m to 3 m aligned SW-NE. Ceramic drainage/sewer pipe at 31.6 m to 36.4 m aligned SW-NE
<i>Finds</i>	None

### Trench 5

<i>Dimensions</i>	30 m by 2 m
<i>Excavated Area</i>	60 m <sup>2</sup>
<i>Excavated Orientation</i>	NW to SE
<i>Soil make-up</i>	Topsoil – dark grey sandy loam – 0.36 m Former plough soil – mid brown sandy clay – 0.43 m
<i>Natural Subsoil</i>	Orangey brown sandy clay and gravel
<i>Significant Features</i>	None
<i>Other Features</i>	Rubble drain at 0 m to 4.3 m; and 5.2 m to 7.6 m aligned N-S. Also at 16 m; 21.4 m; and 26.4 m aligned NE-SW

<i>Finds</i>	None
<b>Trench 6</b>	
<i>Dimensions</i>	30 m by 2 m
<i>Excavated Area</i>	60 m <sup>2</sup>
<i>Excavated Orientation</i>	ESE to WNW
<i>Soil make-up</i>	Topsoil – dark grey sandy loam – 0.4 m Former plough soil – mid brown sandy clay – 0.35 m
<i>Natural Subsoil</i>	Orangey brown sandy clay and gravel
<i>Significant Features</i>	None
<i>Other Features</i>	Rubble drain at 10.3 m; and 16.1 m aligned NE-SW. Also at 21.4 m aligned N-S.
<i>Finds</i>	None
<b>Trench 7</b>	
<i>Dimensions</i>	50 m by 2 m
<i>Excavated Area</i>	100 m <sup>2</sup>
<i>Excavated Orientation</i>	NE to SW
<i>Soil make-up</i>	Topsoil – dark grey sandy loam – 0.35 m Former plough soil – mid brown sandy clay – 0.25 m
<i>Natural Subsoil</i>	Orangey brown sandy clay and gravel
<i>Significant Features</i>	None
<i>Other Features</i>	Agricultural furrows at 2 m, 10 m, 20.3 m, 32 m, and 38 m aligned NW-SE measuring 1 m to 1.2 m in width and maximum of 0.1 m depth Rubble drain at 43 m aligned N-S
<i>Finds</i>	None
<b>Trench 8</b>	
<i>Dimensions</i>	50 m by 2 m
<i>Excavated Area</i>	100 m <sup>2</sup>
<i>Excavated Orientation</i>	N to S
<i>Soil make-up</i>	Topsoil – dark grey sandy loam – 0.5 m
<i>Natural Subsoil</i>	Orangey brown sandy clay and gravel
<i>Significant Features</i>	None
<i>Other Features</i>	Rubble drain at 21.5 m to 23 m aligned NW to SE. Also at 24 m to 29 m; and 45 m to 47 m aligned NE to SW.
<i>Finds</i>	None

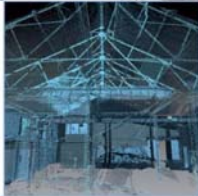
## Appendix 2: Photographic Register

Frame	Description	From	Date
1-4	General views of site from access	VAR	15/8/17
5-10	General view of site from centre	VAR	15/8/17
11	Pipe in T1	NW	15/8/17
12	Section of T1 showing depth	W	15/8/17
13	Post-ex view of T2	NE	15/8/17
14	Section of T3	N	15/8/17
15	Post-ex view of T3	SW	15/8/17
16	Section of T4 showing made ground	S	15/8/17
17	Post-ex view of T4	N	15/8/17
18	Post-ex view of T5	SE	15/8/17
19	Post-ex view of T6	WNW	15/8/17
20-22	Area to N of cables backfilled	VAR	15/8/17
23	View of furrows at SW end of T7	NE	16/8/17
24-25	Post-ex view of T7	NE	16/8/17
26-28	View of rubble drain	N	16/8/17
29	View of rubble drain	S	16/8/17
30-31	Post-ex view of T8	S	16/8/17

## Appendix 3: 'Discovery and Excavation in Scotland' Report

<b>LOCAL AUTHORITY:</b>	East Lothian Council
<b>PROJECT TITLE/SITE NAME:</b>	Old Craighall, East Lothian
<b>PROJECT CODE:</b>	23881
<b>PARISH:</b>	Old Craighall
<b>NAME OF CONTRIBUTOR:</b>	Kevin Paton
<b>NAME OF ORGANISATION:</b>	AOC Archaeology Group
<b>TYPE(S) OF PROJECT:</b>	Evaluation
<b>NMRS NO(S):</b>	N/A
<b>SITE/MONUMENT TYPE(S):</b>	N/A
<b>SIGNIFICANT FINDS:</b>	None
<b>NGR (2 letters, 6 figures)</b>	NT
<b>START DATE (this season)</b>	15 <sup>th</sup> August 2017
<b>END DATE (this season)</b>	16 <sup>th</sup> August 2017
<b>PREVIOUS WORK (inc DES)</b>	None
<b>MAIN (NARRATIVE) DESCRIPTION:</b> (May include information from other fields)	<p>An archaeological evaluation was undertaken by AOC Archaeology Group prior to a residential development at Old Craighall, East Lothian.</p> <p>The evaluation consisted of 250 linear metres of trenching across the development area. The topsoil on site was a dark greyish brown sandy loam overlying a yellow clay and orangey brown sand and gravel.</p> <p>The north western half of the site had been covered by modern made ground up to 1 m thick that relates to the recent construction of residential properties adjacent to the site. The only archaeological features revealed by the evaluation were rubble drains and agricultural furrows relating to post medieval and modern agriculture.</p> <p>No significant archaeological features or artefacts were revealed throughout the evaluation.</p>
<b>PROPOSED FUTURE WORK:</b>	Unknown
<b>CAPTION(S) FOR ILLUSTRATIONS:</b>	N/A
<b>SPONSOR OR FUNDING BODY:</b>	Cruden Homes
<b>ADDRESS OF MAIN CONTRIBUTOR:</b>	AOC Archaeology Group Edgefield Road Industrial Estate Loanhead, Midlothian, EH20 9SY
<b>EMAIL ADDRESS:</b>	admin@aocarchaeology.com
<b>ARCHIVE LOCATION</b>	Archive to be deposited in NMRS





**AOC Archaeology Group**, Edgefield Industrial Estate, Edgefield Road, Loanhead EH20 9SY  
tel: 0131 440 3593 | fax: 0131 440 3422 | e-mail: [edinburgh@aocarchaeology.com](mailto:edinburgh@aocarchaeology.com)

[www.aocarchaeology.com](http://www.aocarchaeology.com)