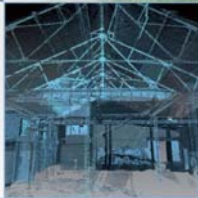


Remediation works at Sighthill, Glasgow: Archaeological Works Data Structure Report

AOC 23135
27th September 2017



ARCHAEOLOGY

HERITAGE

CONSERVATION

Remediation works at Sighthill, Glasgow: Archaeological Works Data Structure Report

On Behalf of: VHE Construction Plc.,
Whaley Road,
Barugh,
Barnsley
S75 1HT

National Grid Reference (NGR): NS 59681 66446

AOC Project No: 23135

OASIS No: 296947

Prepared by: Kevin Paton

Date of Fieldwork: 1st September 2016 to 12th September 2017

Date of Report: 27th September 2017

This document has been prepared in accordance with AOC standard operating procedures.

Author: Kevin Paton

Date: 27th September 2017

Approved by: Lindsay Dunbar

Date: 27th September 2017

Draft/Final Report Stage: Draft

Date: 27th September 2017

Enquiries to: AOC Archaeology Group
Edgefield Industrial Estate
Edgefield Road
Loanhead
EH20 9SY

Tel. 0131 440 3593
Fax. 0131 440 3422
e-mail. edinburgh@aocarchaeology.com



Contents

	Page
List of Illustrations	4
List of Plates	4
List of Appendices	4
ABSTRACT	5
1 INTRODUCTION	6
1.1 Background	6
1.2 Site Location	6
1.3 Historical Background	6
2 OBJECTIVES	7
3 METHODOLOGY	7
4 RESULTS	8
4.1 Introduction	8
4.2 Chemical Works	8
5 DISCUSSION	14
6 CONCLUSION AND RECOMENDATIONS	15
7 REFERENCES	16
7.1 Bibliographic References	16
7.2 Cartographic References	16
APPENDIX 1: CONTEXT REGISTER	18
APPENDIX 2: PHOTOGRAPHIC REGISTERS	22
APPENDIX 3: 'DISCOVERY AND EXCAVATION IN SCOTLAND' REPORT	25

List of Illustrations

Figure 1: Site location

Figure 2: Development site showing Zones 1-3

Figure 3: Extract from 1894 OS map showing chemical works

Figure 4: Survey of chemical works remains

Figure 5: Extract from 1854 Ordnance Survey

Figure 6: Survey of Broomhill Cottage features and 1854 Ordnance Survey overlain onto modern map

List of Plates

Plate 1: General view of chemical works

Plate 2: General view of wall [3002]

Plate 3: General view of southern room

Plate 4: General view of brick base [3024]

Plate 5: General view of Broomhill Cottage building

Plate 6: General view of wooden floor [3047]

List of Appendices

Appendix 1: Context Register

Appendix 2: Photographic Register

Appendix 3: Finds Register

Appendix 4: Discovery and Excavation in Scotland Report

ABSTRACT

A series of archaeological monitoring visits and watching briefs were undertaken by AOC Archaeology Group as part of the remediation works at Sighthill, Glasgow.

The works showed that the vast majority of the remediation areas had been heavily truncated by the modern residential developments as well as the late 19th and early 20th century chemical works and other industrial constructions shown in the area.

One of the earliest industrial structures on site, the original chemical works was shown to survive under 4 m of made ground at the edge of Pinkston Drive. The remaining foundations, floors and walls of the structure were excavated and recorded prior to their removal.

A building that may be related to the 19th century Broomhill Cottage was also revealed by the watching brief at the southern edge of the development area. This building survived as four partially fragmented walls, a sandstone pillar and part of an internal wooden floor and external cobbled surface.

1 INTRODUCTION

1.1 Background

1.1.1 A programme of archaeological monitoring visits and watching briefs were required by VHE during the remediation works taking place within the former Sighthill estate on either side of Pinkston Road and Fountainwell Road, Sighthill, Glasgow. The scope of the works was determined by Glasgow City Council, who are advised on archaeological matters by the West of Scotland Archaeology Service (WoSAS). The works were conducted according to the terms of a *Written Scheme of Investigation* (AOC 2016), approved on behalf of Glasgow City Council by WoSAS and in accordance with *Scottish Planning Policy* (Scottish Government 2014) and *PAN 2/2011 Planning And Archaeology* (Scottish Government 2011).

1.2 Site Location

1.2.1 The remediation areas are located throughout the former estate of Sighthill, Glasgow (centred on NGR NS59835 66703; Figure 1). The site was most recently a large residential estate containing high rise flats and other housing with a recreational park and footpaths to the south. The area is bounded by the M8 motorway to the south, the railway line to the west, Springburn road to the east and Sighthill cemetery to the north.

1.3 Historical Background

1.3.1 The site topography is generally uneven with a number of steeply sloping areas indicative of large scale industrial landscaping often related to the rail tracks, rail yards or the infilling of a traditionally low lying area referred to as Limehouse Bog (Roy's Military Survey, Lowlands, 1752-55). Several prominent areas exist throughout the site including Sighthill Park which is the location of the modern Sighthill Stone Circle. The top of Sighthill Park is also known to have been the location of Broomhill Steading and the later Broomhill House. Neither of the sites are listed by Historic Environment Scotland, but are known from cartographic evidence, dating to at least the 18th century (Fleming 1807). Both of these sites were excavated prior to the start of the main remediation works (Paton 2017).

1.3.2 Water from the Monkland Canal is still piped through two 24 inch diameter steel or asbestos cement pipes beneath the M8 and entering the SW corner of the development boundary. These pipes replaced the former Cut of Junction canal, the remains of which may survive within the development area. Queen Street High Level rail tunnel runs north to south beneath Sighthill Park as does the now disused Buchanan Tunnel.

1.2.4 The large scale industrial activities, which can be seen on historic mapping, include the St Rollox Chemical Works, St Rollox Depot, Fountainwell Brick Works, Clyde Soap Works and gasworks. These along with other landfilling and spoil tipping activities have resulted in the modern landscape that makes up the development area.

2 OBJECTIVES

2.1 The objectives of the archaeological watching brief were:

- i) to have an archaeological 'Clerk of Works' liaise closely with VHE Construction Plc and WoSAS to supervise the requirement of and extent of watching brief works within the development area during the remediation works;
- ii) to advise and implement an appropriate form of any required mitigation, such as excavation (Phase 2), post-excavation analyses and publication (Phase 3), should significant archaeological remains be encountered compliant with *Scottish Planning Policy* (2010) and *Planning and Archaeology 2/2011* (2011).

3 METHODOLOGY

- 3.1 The archaeological works consisted of weekly monitoring visits to establish the made ground levels over the site and the likelihood of significant archaeological deposits pre dating the modern dumping and landscaping. The site was divided into three zones (Figure 2), and in areas where the likelihood was high of encountering former structures or untouched former soil horizons a watching brief was put in place. This consisted of the monitoring of the ground breaking works in these areas under the constant supervision of an experienced field archaeologist.
- 3.2 Where features and structures were revealed they were cleaned by hand before being recorded by digital photography, drawn and surveyed in detail and then a written record produced using AOC *pro forma* context sheets. No samples were taken due to the levels of contamination on site, and any finds from heavily contaminated areas were also discarded.

4 RESULTS

4.1 Introduction

4.1.1 The archaeological works were conducted between the 1st September 2016 and the 12th September 2017. Weather conditions were variable throughout the course of the work however, overall archaeological visibility was good.

4.1.2 The various data gathered from the watching brief are presented as a series of appendices:

Appendix 1: Context Register;

Appendix 2: Photographic Register;

Appendix 3: Finds Register

Appendix 4: '*Discovery and Excavation in Scotland*' entry

4.1.3 The majority of Zone 1 and Zone 3 consisted of 1.5 m to 10 m (+) of contaminated clays with abundant brick, stone, concrete and other modern construction and demolition inclusions (Plate 1). Throughout these zones the made ground deposits often overlay galligu deposits that were not being removed by the works. The natural clay was not exposed within Zone 1, but was encountered at 1.5 m in Zone 3 within the service trenches along the northern boundary. To the immediate south of these service locations the current ground level was noted at approximately 2 m below the clay exposed, demonstrating the significant truncation that had taken place during the 20th century high rise flat constructions.

4.1.4 The only archaeologically significant site within Zone 1 & 3 according to the Environmental Statement (GUARD 2003) was Martyrs Stone (Site 4), which is out with the development boundary, so was not impacted upon.

4.1.5 Within Zone 2, the made ground deposits were typically 0.5 m in depth, and up to 4 m in the SW corner of the zone next to the canal basin. It is to the immediate north of this zone that the remains of the 19th century chemical works were encountered and along the southern boundary of this zone that the remains of Broomhill Cottage were revealed.

4.2 Chemical Works

4.2.1 One site of significant archaeology revealed by the watching brief works were the structural remains of the late 19th century chemical works shown on the 1896 Ordnance Survey (Figure 3). The structure was revealed under 4 m of made ground [3000] and [3001] and in some places had galligu and other chemical waste deposits overlying the walls and floors. Due to the high level of contaminants within the site a few of the exposed features were recorded without detailed cleaning.

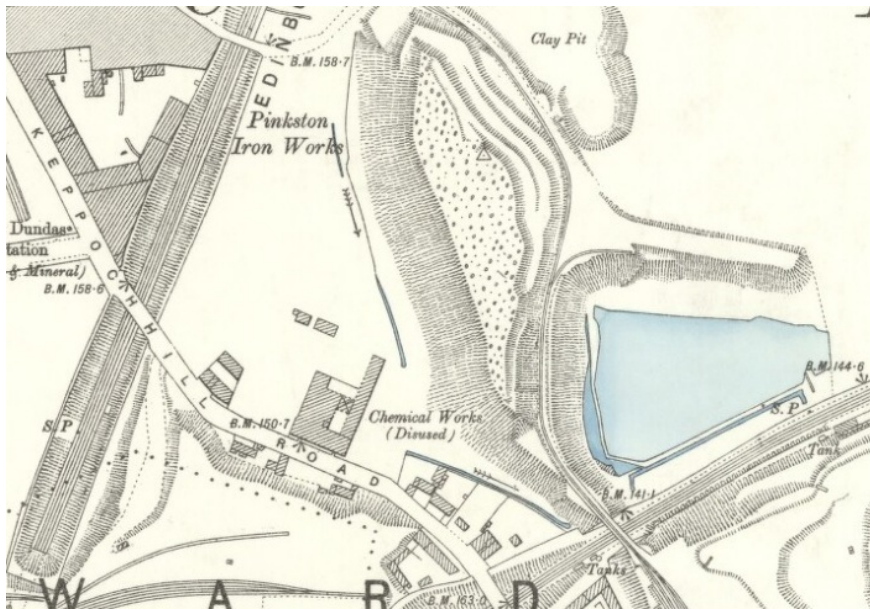


Figure 3: Extract from 1896 OS map showing chemical works

- 4.2.2 All of the wall features revealed were of brick construction, mainly related to internal walls, all aligned N-S and E-W with some remnants of brick floors, machine base platforms and culverts also present (Figure 4; Plate 1). One of the main walls encountered, [3002] at the western edge of the remediation area, was aligned S to N before turning W at a right angle. It measured 18.2 m long and survived to 1.1 m high with a tapered base placed on a concrete foundation (Plate 2).
- 4.2.3 Some of the other walls [3003], [3008], [3010], [3016] and [3020] defined a large rectangular room aligned N-S. Wall [3003] has a buttress [3004] on its W side and it forms a doorway with wall [3008] leading to the W. There is another doorway formed by walls [3010] and [3008] that leads into a southern room formed by [3005], [3010] and [3019]. This doorway had been blocked by wall [3009].
- 4.2.4 This smaller room contains a curving brick wall [3018] in the NE corner abutting walls [3010] and [3019] that is associated with brick floor remnant [3017] (Plate 3). Walls [3014] and [3015] are both aligned E-W at the S edge of the room and may have been the southern extent of the room. Both walls had also been truncated by the machine excavations due to their position in the trench.
- 4.2.5 In the larger room there are several brick platforms [3022], [3023], [3024], [3025], [3027] and [3030] and part of a brick floor [3034] underlying wall [3020] (Plate 4). There are also some other internal walls [3028] and [3029] that define a rectangular space measuring approximately 4 m by 2 m with the platforms all to the north of this space. Two further small wall remnants [3021] and [3026] were contained in the northern end of the room with [3021] abutting the S face of wall [3020].
- 4.2.6 A large timber lined pit [3013] measuring 2.63 m by 1.4 m by 0.11 m was positioned to the S end of the room and further wall remnants [3031], [3032] and [3033] in the SE corner. A further machine base [3040], brick floor [3041] and curving brick wall [3042] similar to wall [3018] were located further E of the main rooms during the removal of the access ramp for the area. These features were unable to be surveyed and only recorded by photography.
- 4.2.7 Underlying the walls and platforms were several culverts [3007], [3011], [3035] and [3036] associated with the chemical works. None of them were fully cleaned out due to contamination issues. Finally, a large pit [3037] measuring 6 m in diameter was revealed underneath the chemical works foundations. This pit was unable to be excavated as the remediation works had reached its required depth.

Remediation works at Sighthill, Glasgow



Plate 1: General view of chemical works



Plate 2: General view of wall [3002]



Plate 3: General view of southern room



Plate 4: General view of brick base [3024]

4.3 Broomhill Cottage

- 4.3.1 The features revealed along the southern boundary of the development area contained the fragmented remains of four walls of a building ([3044], [3045], [3051], and [3053]), along with an internal wooden floor surface [3047] in the north west corner and an external cobbled surface [3046] to the south (Figure 5; Plate 5). The features were covered by up to 1.5 m of made ground consisting of demolition material most likely from the building itself.
- 4.3.2 The northern wall [3045] had survived to a height of 1.25 m with three buttresses spaced evenly along the southern face and a single buttress along the northern face. The walls were contained by a construction cut [3052] that removed part of the slope in the area to create a level surface for the building. The eastern, western and southern walls ([3053], [3051] and [3044] respectively) have all been truncated but were able to show that the building would have measured approximately 15 m by 6 m. In line with the southern wall and possibly creating an entrance with it there was also a large sandstone pillar [3048] measuring 1 m by 1 m by 0.4 m which sat on a large sandstone base approximately 2m by 2 m.
- 4.3.3 Under the wooden floor surface [3047] there was a levelling layer [3050] containing ash and small fragments of sandstone and brick rubble. The wooden beams of the floor were substantial in nature measuring 2.7 m long by 0.25 m (Plate 6). Some of the timbers were removed during excavations with the remaining area measuring 2.7 m by 2.2 m. As for the external cobbled surface only a small area measuring 1 m by 0.62 m had survived abutting the southern face of wall [3044], with cobbles noted throughout the stripped area indicating their prior disturbance by the landscaping works.



Plate 5: General view of Broomhill Cottage building



Plate 6: General view of wooden floor [3047]

5 DISCUSSION

- 5.1 The features found within the area of the former chemical works and at the site of Broomhill Cottages can be dated using the cartographic evidence for the area to the second half of the 19th century. The 1854 Ordnance Survey (Figure 6) shows a tunnel shaft and a small building in the area of the chemical works that is gone by the time of the 1896 Ordnance Survey (Figure 3), and is superseded by the large chemical works, labelled as 'disused'. The abandonment of this structure is most likely due to the construction of the larger chemical works to the east, all of which formed various parts of the St Rollox Chemical Works, originally founded in 1799 (Canmore ID 169642).
- 5.2 From the structural remains of the chemical works it is impossible to ascertain the exact function of the rooms and the features within them, as only the base foundations have survived demolition and infilling. It is interesting to note that the entire structure appears to have had a short life span and indicates the success of the St. Rollox Works as it expanded rapidly throughout the 19th and early 20th centuries.

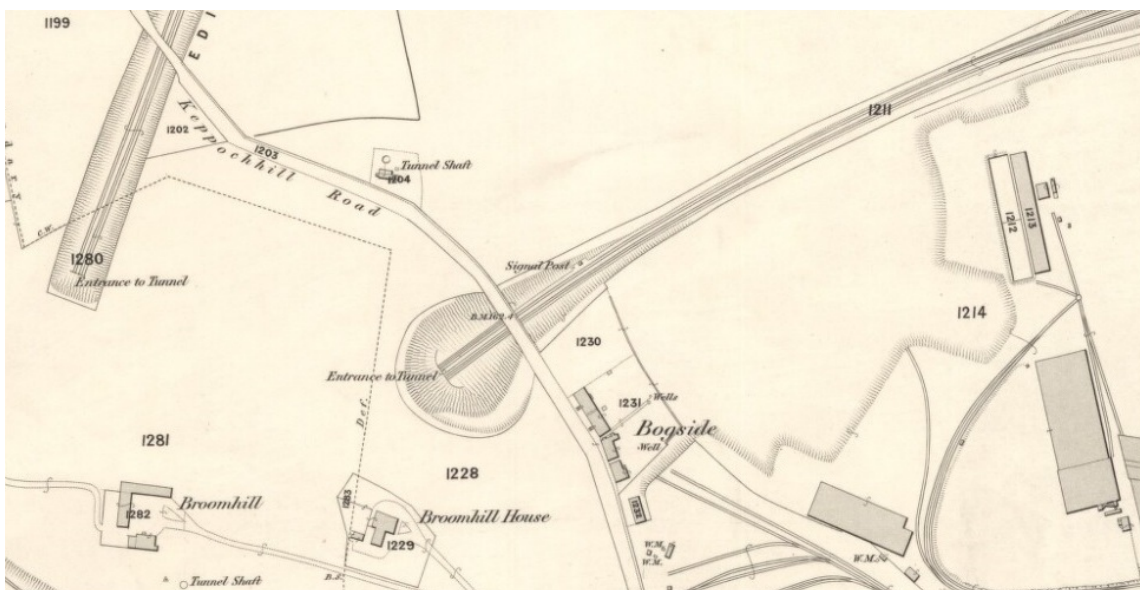


Figure 6: Extract from 1854 Ordnance Survey

- 5.3 As for the Broomhill Cottage site, the first indications of a structure in this area come from the 1854 Ordnance Survey map with a small rectangular building and boundary/garden walls around it to the north west. The walls from the excavation are clearly the walls of this small rectangular building labelled as Broomhill Cottage. However, the presence of the large pillar in the southern wall rather than a continuation of the foundation is a peculiar architectural characteristic for a simple cottage structure. The pillar in the centre of the building suggests a large entrance rather than a simple cottage door, indicating that the cottage building may have had a living quarters and a storage space attached.
- 5.4 Given its proximity to and similar period of construction to the Broomhill Mansion it is possible that the building and cottage were part of the servants quarters within the estate. However, as the land to the immediate south of the cottage has been given over to the railways it is also likely that the cottage was used by the railways, an interpretation that is also indicated by the lack of roads directly connecting the cottage to the mansion and steading.

6 CONCLUSION AND RECOMENDATIONS

- 6.1 The archaeological watching brief has been successful in providing a safeguard for all the archaeological remains within the remediation areas, and the structures found have now been recorded prior to their complete removal. Due to the redevelopment of the area in the 1960's the majority of the former structures depicted on earlier maps within the site appear to have been demolished, or only survive at depths that are not being exposed. The exceptions to this are the former chemical works building that in itself only partially survived before being buried, and the partial remains of Broomhill Cottage.

- 6.2 This Data Structure Report details the results of the watching brief. It is recommended that a programme of post excavation analysis be conducted to combine the reports from the other archaeological works and conduct further research into the history of the sites. This recommendation will require approval of the West of Scotland Archaeology Service who advise Glasgow City Council on archaeological matters.

7 REFERENCES

7.1 Bibliographic References

AOC 2016 *Remediation Works at Sighthill, Glasgow: Archaeological Works Written Scheme of Investigation* Unpublished client report

GUARD, Chapter 13, Part 2, Ironside Farrar, (2003), *Environmental Statement, Glasgow 2018 Youth Olympics Bid Legacy, Sighthill Transformational Regeneration Area, Glasgow City Council*

Paton, K. 2017 *Broomhill House & Steading, Sighthill, Glasgow: Archaeological Evaluation and Excavation Data Structure Report* Unpublished client report

Scottish Government 2011 *PAN2/2011 Planning and Archaeology*.

Scottish Government 2014 *Scottish Planning Policy*.

7.2 Cartographic References

ca.1747 – 55	William Roy	<i>Military Map of Scotland</i>
1807	Peter Fleming	<i>Map of the City of Glasgow and Suburbs</i>
1858	Ordnance Survey	<i>Lanark Sheet VI.7 (City of Glasgow)</i>
1896	Ordnance Survey	<i>Lanarkshire 006.07</i>

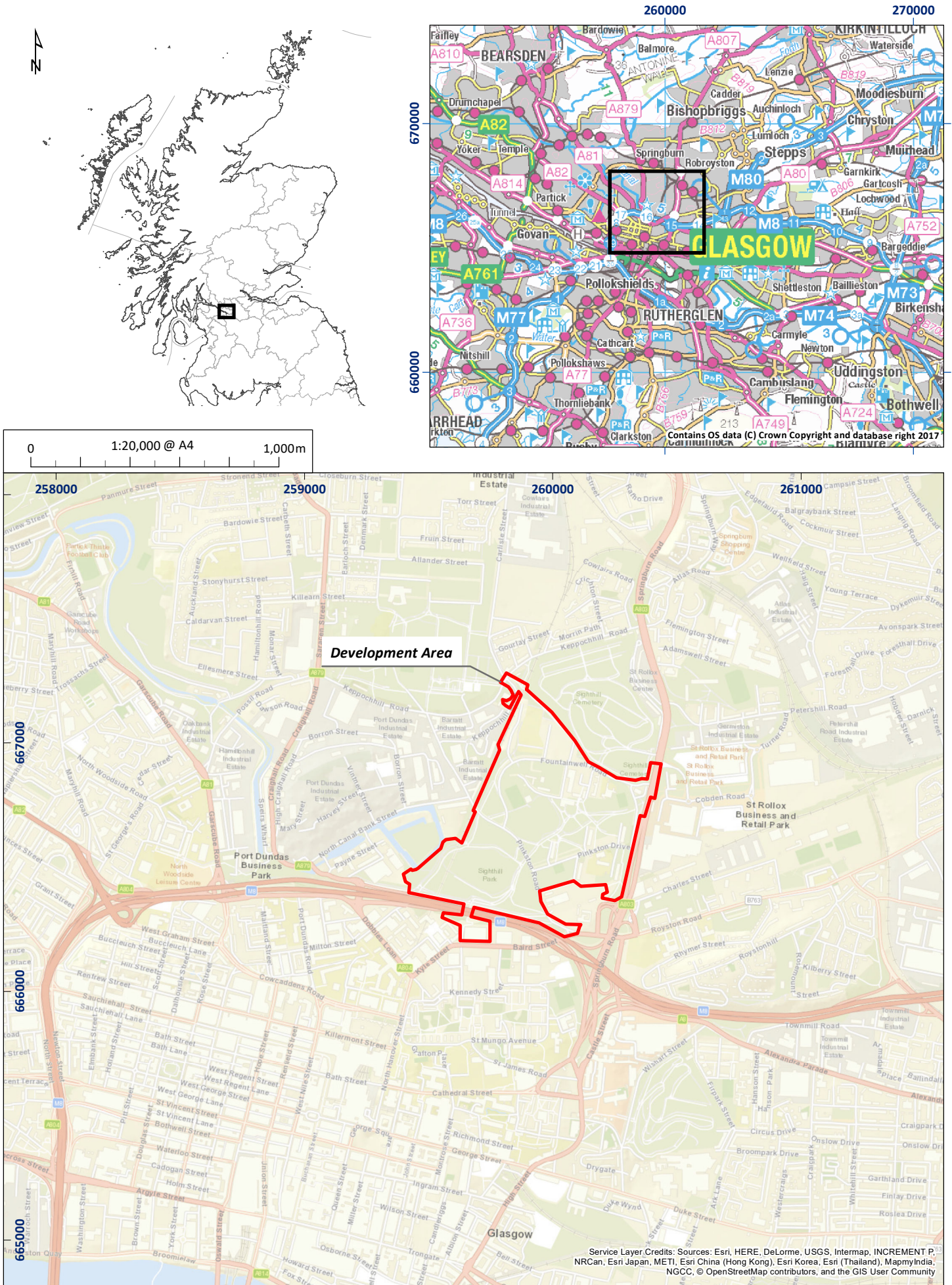


Figure 1: Site location plan

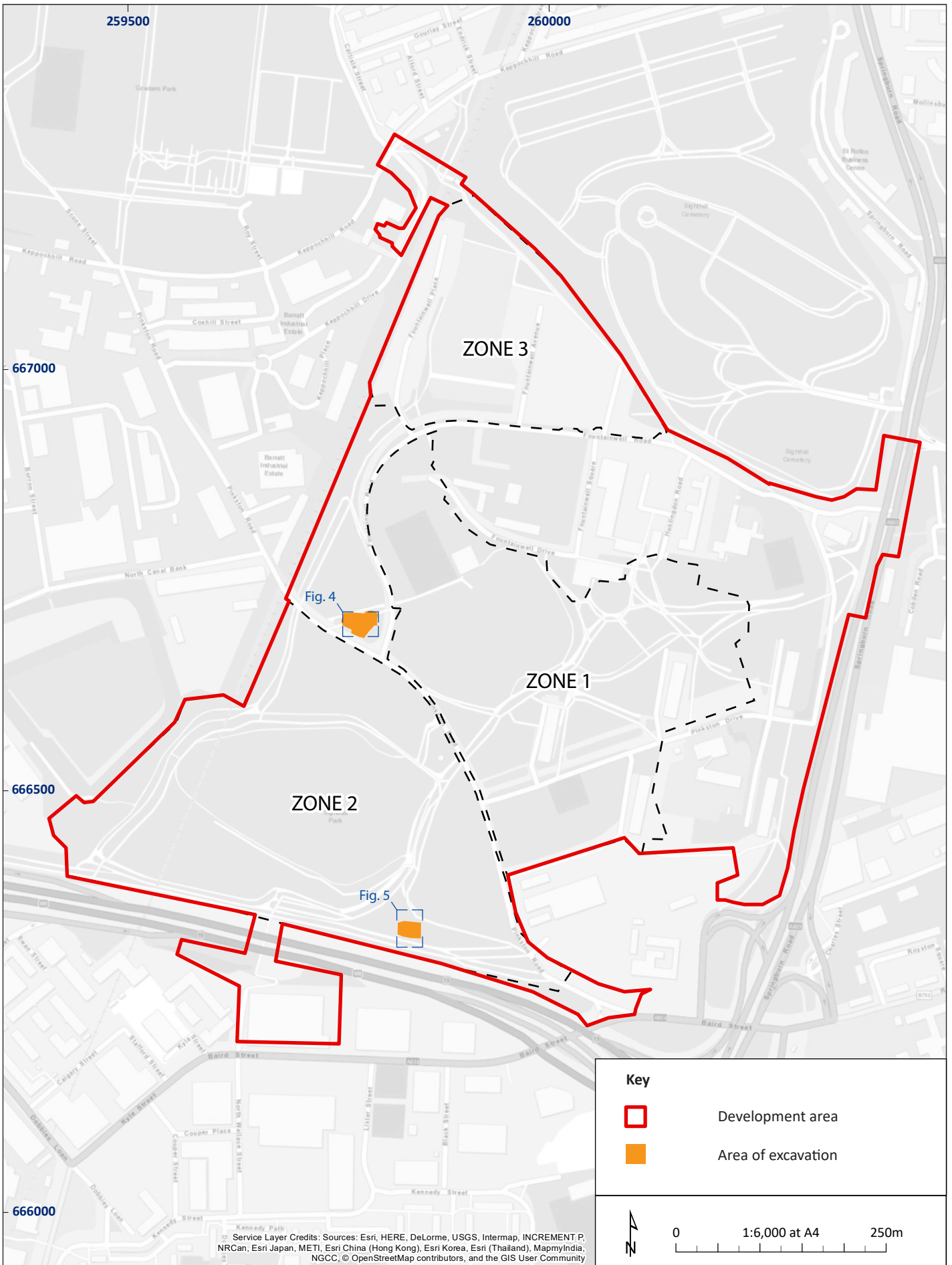


Figure 2: Development plan showing Zones 1-3

01/23135/REP/02/01



Figure 4: Survey of chemical works remains

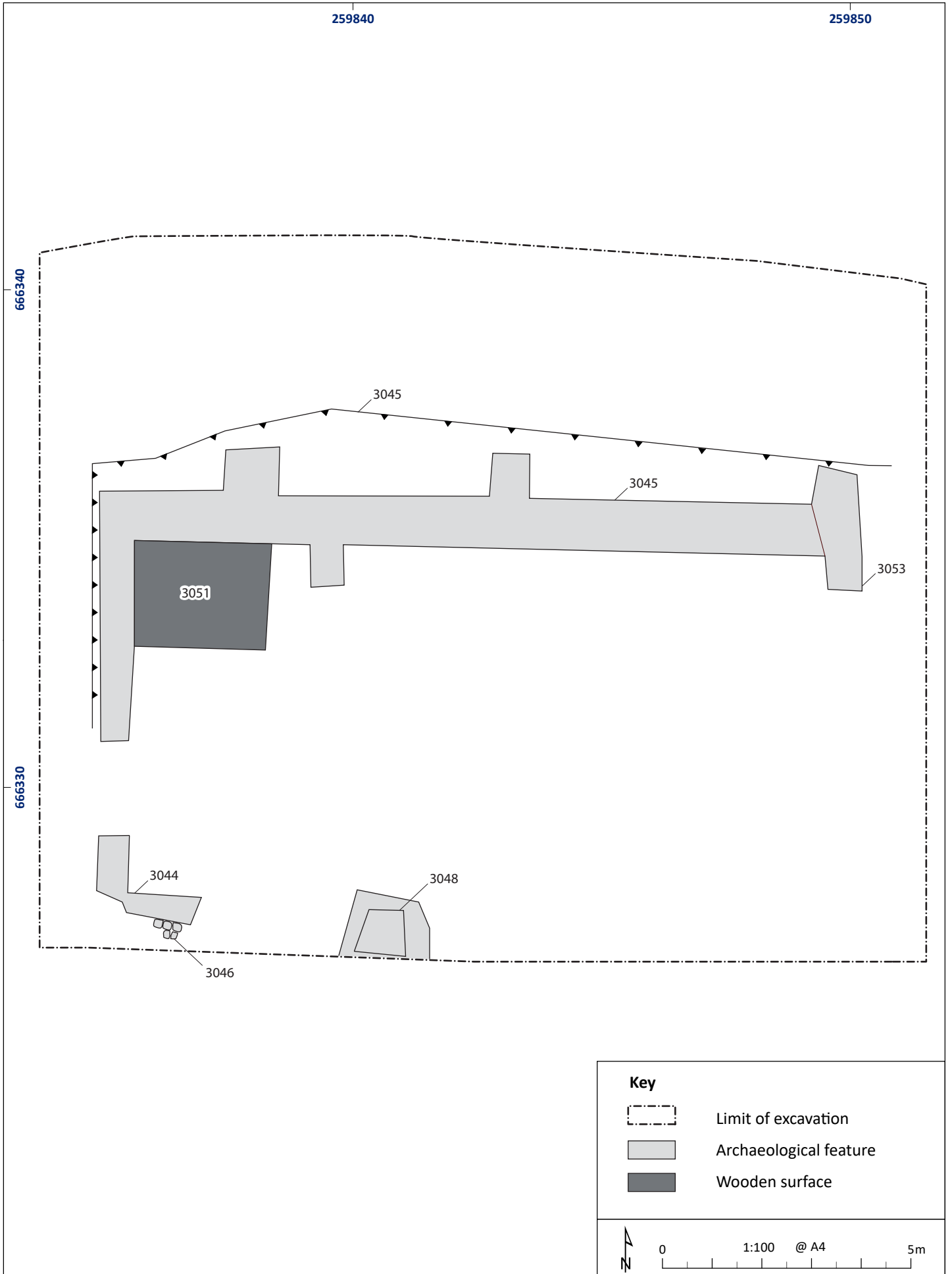


Figure 5: Survey of Broomhill Cottage remains

01/23135/REP/05/01

**Remediation works at Sighthill, Glasgow:
Archaeological Works
Data Structure Report**

Section 2: Appendices

APPENDIX 1: CONTEXT REGISTER

Context No.	Area	Description and Interpretation
3000	Chem	Made ground surrounding whole area to a maximum depth of 4m. Made ground above walls, deposit
3001	Chem	Made ground containing contaminated material. Made ground on which the walls are built (underneath walls), deposit
3002	Chem	'L'-shaped wall of red brick and concrete foundations on N-S alignment. Main wall is 2 bricks wide and then terraces down. Concrete foundations measure 1.3m wide. Top of wall measures 0.6m wide. Altogether 18.2m (L) x 0.6m-1.3m (W) x 1.10m (max H). Wall relating to chemical works
3003	Chem	Red brick wall on N-S alignment, varies in width with a wider end in the N but this may have been from truncation. Abutted by platform [3004] on the E side. 10.8m (L) x 0.36m-0.47m (W) x 0.27m (D). Wall relating to chemical works
3004	Chem	Rectangular red brick platform on E-W alignment abutting wall [3003] on the E side. Bricks are stepped slightly and there are 2 large metal rods extending upwards from the base. 1.15m (L) x 1.10m (W) x 0.23 (H). Red brick platform for a piece of equipment relating to chemical works
3005	Chem	'L'-shaped red brick wall lying to the W of wall [3002]. Comprised of red brick, built in a pyramid section where foundations are slightly stepped. Void between [3005] and [3010] has been closed by [3009]. 4.9m (L) x 0.48m (W) x 0.76m (D). Wall of chemical works building
3006	Chem	Sub-rectangular void in wall [3005], ceramic pipe extends from base of void on E-W alignment. 0.47m (L) x 0.44m (W) x 0.23m (D). Void cut in [3005] for placement of ceramic drain pipe
3007	Chem	Red brick supports lying on either side of void [3006] extending E. 0.45m (L) x 0.22m (W) x 0.31m (D). Buttressing to support wall [3005] after void [3006] was cut through
3008	Chem	Linear red brick wall abutting wall [3005] on a N-S alignment, comprised of unfrogged red bricks and grey lime mortar. 2.14m (L) x 0.38m (W) x 0.54m (D). Wall of chemical works, abutting wall [3005]
3009	Chem	Red brick wall on E-W alignment abutting walls [3005] and [3008]. Comprised of red brick and grey lime mortar. It's physical extension is wall [3010] with the same direction. 2.45-2.5m (L) x 0.1-0.12m (W) x 0.22-0.3m (H). Blocking up old entrance/doorway between walls [3005] and [3010]
3010	Chem	Linear red brick wall on E-W alignment comprised of red brick and grey lime mortar. Is potentially comprised of 2 support columns joined by a single skinned red brick wall and a later wall to the W. Single and double red brick wall. Towards the single skinned, but towards the W and after a small platform (measuring 0.80m x 0.50m) it becomes double-skinned. Three flat stones were found at the E side of the wall and on top of it, which might be associated with brick floor [3017]. At the W end of [3010], the wall turns towards the N and creates a corner wall [3019]. The association between the two is not clear, but it seems that they are keyed together. 7.6-7.64m (L) x 0.08-0.48m (W) x 0.3-0.4m (H). Foundation depth was later found at 1.10m below the higher brick. Continuation of wall [3005] creating an entrance which was then blocked by [3009]
3011	Chem	VOID
3012	Chem	Sub-rectangular shaped pit containing sandstone and mortar measuring 1.8 m by 1.8 m. Modern test-pit
3013	Chem	Large rectangular timber-lined pit filled with light grey clay. Measures roughly 2.63m (L) x 1.4m (W). Timbers measure 0.11m thick. Large pit for possible storage for the chemical works
3014	Chem	Red brick built feature. Bricks look like they had collapsed towards the N. Heavily truncated. Possibly the same as [3015], however, no physical relation was found. 1.30m (L) x 1.20 (W), full depth was not exposed. Found at the N side of the excavated area N of wall [3005]. Collapsed brick wall of chemical works
3015	Chem	Red brick wall feature. Bricks look like they have collapsed in an irregular manner, possibly on either side of the wall. Heavily truncated but very likely at a post-collapse stage. Situated W of brick collapse [3014]. Very likely the same as [3014], although no physical relation was found. Area between [3014] and [3015] might be a possible

Remediation works at Sighthill, Glasgow

		entranceway. 4.50m (L) x 1.20m (W), full depth was not exposed. In areas a three brick course was visible. On 6/12/16 a continuation of the wall was found during the examination of the ramp. Collapsed brick wall of chemical works
3016	Chem	Red and white brick built linear structure. Runs from S to N. Exposed length was approximately 15m but the actual structure seems to be longer. The S side is 1.50m wide. That is the full width of the culvert that is made of the brick-built tube and the side supports. Approximately 10m from the S end the culvert seems to survive only as the brick built tube. On 2/12/16 another tube of a culvert was exposed at the E-facing section of the site, at the S end of [3016]. Very likely to be the same installation. Linear culvert running parallel to culvert [3011] to its E side
3017	Chem	Single course red brick built floor. Situated N of wall [3010] and was found on the same height as wall [3010]. It has been built around the E side of curvilinear wall(?) [3018] but it was not found at the W side of it. Its N side has probably been truncated. 2.70m (L) x 1.35m (W). Brick floor
3018	Chem	Single red brick built curvilinear feature. Built at the same height like wall [3010] and N of it. Its W side was damaged by the machine. It is in association with brick floor [3017]. Original shape was possibly a half ring. A possible gap existed at its S side. 1.80m (L) x 0.80m (W), height was one single brick. Curvilinear brick wall or floor associated with feature
3019	Chem	Red brick built wall. Makes a corner to its S side with wall [3010]. Relation with [3010] is unclear, but probably they are keyed to each other. 2.80m (L) x 0.37m (W), depth was not exposed. Wall of chemical works
3020	Chem	Linear red brick and mortared wall on E-W alignment. Potential extension/support on the internal N face measuring approximately 0.33m (L) x 0.34m (max W). On the S side of the wall, a small platform which may be a step measuring 1.16m (L) x 0.22m (W) was present. Begins to return Northwards for the W end. Truncated in multiple places by machine. 7.1m (L) x 0.22-0.7m (W), survives at least 3 courses of bricks high. Wall of chemical works
3021	Chem	Linear red brick wall on N-S alignment extends from near E end of wall [2020]. Slightly wider at the S end as it abuts wall [3020]. Measures 0.44m wide, unable to tell if it is all one wall or if main extension is later addition. 2m (L) x 0.36m (W) x 0.11m (D). Wall of chemical works
3022	Chem	Rectangular in plan, red brick, possibly mortared. Ull extent unknown as there is a lot of very compact material on top which could not be removed. 0.7m (L) x 0.38m (W). Brick wall or platform
3023	Chem	Square red brick and mortar platform which has been truncated by machine as some bricks have been removed. Lies to the S of platforms [3024] and [3025] and to the N of wa;; [3020]. 1.04m (L) x 0.98m (W). Brick platform for machinery
3024	Chem	Large rectangular red brick and mortar platform on N-S alignment. Lies partially on top of platform [3025], also to the N of platform [3026]. Survives 2 courses of brick high. 2 large metal rods extend vertically in the middle of platform. 1.65m (L) x 0.95m (W) x 0.24m (D). Might be the same structure as [3025], see notes from W.B. daybook, 02/12/16. Brick platform for machinery
3025	Chem	Roughly rectangular red brick platform on E-W alignment, underlying platform [3024]. 1.18m (L) x 0.74m (W), depth unknown. Brick platform for machinery base
3026	Chem	Linear red brick mortared wall on E-W alignment lying to the S of platform [3027]. 1.1m (L) x 0.22 (W), depth unknown. Small brick partition wall
3027	Chem	'T'-shaped red brick platform with potential extensions at the S end, material is too hard to remove. 0.94m (L) x 0.84m (max W), full measurements on sketch plan. Brick platform for machinery
3028	Chem	'L'-shaped red brick wall on E-W alignment with a return at W end on a N-S alignment. Has potentially been truncated towards the E end or there are voids in the N-facing side of the wall. E-W wall measures 4.07m (L) x 0.34m (W). N-S wall measures 1.7m (L) x 0.22m (W). Voids measures 0.35m (L) x 0.24m (W). Interior wall of chemical works

Remediation works at Sighthill, Glasgow

3029	Chem	'L'-shaped red brick wall on E-W alignment with rturn at the E end on a N-S alignment. Full extent is unknown as it is partially covered by hard chemical waste at the W end. 15 bricks wide roughly. Measures E-W 2.4m (L), N-S 0.94m (L) x 0.36-0.24m (W). Interior wall of chemical works
3030	Chem	Rectangular red brick platform. Large metal rods extend vertically through the platform. Lies E of wall [3029]. 1.46m (L) x 1m (W). Brick platform for machinery
3031	Chem	Red brick built linear wall. Built against the S-facing side of wall [3010]. Only the top surface has been exposed. N-S orientation. 2.20m (L) x 0.35m (W), depth unknown. Brick wall, unknown function
3032	Chem	Red brick built linear wall, single skinned. S of wall [3031]. May be continuing deeper but it may also run longer. Exposed length is 2.30m, single brick wide. Single brick wall
3033	Chem	Single white brick built feature. Shape is square with a single brick linear running in a W-E direction built against the W side of the structure. Situated directly W of wall [3031] and approximately 1.15m S of large wall [3010]. 1.80m (L) x 1.30 (W). Possible shaft for culvert
3034	Chem	Red brick built floor. Runs under the limits of the excavation. Found below wall [3020]. > 4m x 2m. A small plastic pipe was exposed below the floor (unknown function). Also to the W of the floor, a clay pipe was excavated that had a concentration of water in it. It is unclear if it is later than the floor. Brick floor
3035	Chem	Red and white brick built culvert. Found during removal of archaeological structures. Was not identified before because it was running under hard contaminated material that was not excavated. Runs SSW-NNE. Possibly associated with culvert [3016]. Around 4m was exposed. Situated E of platform [3024] (?). It is not clear if it is the base of the aforementioned platform or remnants of brick floor. Culvert
3036	Chem	Big clay pipe (culvert). Built inside a large cut. Large timbers were placed at the side of the cut and the whole structure was filled with sand. The culvert runs E-W and possibly meets culvert [3035]. Further, it might be associated with culvert shaft(?) [3033]. The cut is approximately 2m wide. [3036] seems to end at a large pit/channel at the E of wall [3002]. The cut/pipe seems to curve towards the SW around the area between walls [3002] and [3003]. Culvert
3037	Chem	Large linear cut. Sides and base not fully excavated. However, sides seem to be steep. At this stage we were not allowed to excavate deeper into the cut. Approximately 6m wide at the N end, > 6m at the S side. N-S orientation. Disappears under the limits of excavation. Excavation stopped approximately 1m from the top of the cut. Fill is mixed contaminated material. Large waste pit and/or ditch
3038		VOID
3039		VOID
3040	Chem	Red brick built platform. Found during excavation of ramp at the NW of site. 2m (L) x 1.20m (W) x c. 0.20m (H). Found above brick floor [3041]. Possibly relating to installation [3042] in terms of function(?) Platform
3041	Chem	Red brick built floor. Possibly part of a larger installation hat includes [3040] and [3042]. Survived and exposed area measures 4m (L) x 2.5m (W). Two to three courses high. Continues S and W under ramp. Built contemporary with installation [3042]. Brick floor
3042	Chem	Single red brick built curvilinear feature. Similar to [3018]. Built on the same height as floor [3041]. Original shape possibly half ring. 1.5m (L) x 1.5m (W). Found on [3041] at the NW area of the site. Curving installation
3043	AH39	Single course of sub-rectangular whinstone setts (0.25 m by 0.14 m) orientated NE-SW. Measurements of exposed section: 4 m by 0.95 m by 0.1 m to 0.16 m. Abutted to SE by large sub oval rocks and bitumen. Truncated at N end by service trench, extending out of trench to the S. 20th Century Paving

Remediation works at Sighthill, Glasgow

3044	KNW1	L-shaped section of sandstone wall with sand and lime mortar, aligned E-W and returning to the N where it forms southern part of wall [3051]. Measures 1.83 m (E-W) by 0.56 m and 1.12 m (N-S) by 0.6 m. Abutted along S edge by setts [3046]. South west corner of Broomhill Cottage building
3045	KNW1	Sandstone wall with sand and lime mortar aligned E-W with three buttresses along the N face measuring 0.9 m by 0.9 m. Single buttress on S face measuring 0.8 m by 0.62 m. Abutted by floor [3047] to W edge and keyed into walls [3051] to W end and [3053] to E end. Measures 15 m by 0.9 m by 1.25 m (maximum height). Northern wall of Broomhill Cottage building
3046	KNW1	Whinstone cobbles abutting S edge of wall [3044]. Heavily truncated to the S, E and W. Surviving are measures 1 m by 0.62 m. External paved surface
3047	KNW1	Timber planks (sleepers) in NW corner of cottage building abutting N and W walls. Eight surviving aligned E-W, with three others at E edge of these that were aligned N-S but removed during machining. Surface area measures 2.7 m by 2.2 m with each sleeper measuring 2.7 m long by 0.25 m. Overlies levelling deposit [3050]. Floor surface of Broomhill Cottage building
3048	KNW1	Square sandstone block measuring 1 m by 1 m by 0.4 m sitting on a square sandstone foundation approximately 2 m by 2 m (foundation covered in water when recording. To the E of wall [3044] and possibly forms and entrance with it). Sandstone pillar at entrance to Broomhill Cottage building
3049	KNW1	Mixture of clay, soil, and abundant sandstone rubble approximately 0.5 m to 1.5 m deep. Demolition material and landscaping over Broomhill Cottage building
3050	KNW1	Mixture of mid brown sandy silt with abundant charcoal, small gravels, sandstone fragments and grey ash. Underlies floor [3047] and abuts S face of wall [3045]. Levelling deposit for floor of Broomhill Cottage building
3051	KNW1	Sandstone wall with sand and lime mortar aligned N-S. Keyed into W end of wall [3045] and same as N-S section of wall [3044]. Abutted by floor [3047] to E. Measures 5.4 m by 0.6 m by 0.75 m (maximum height). Western wall of Broomhill Cottage building
3052	KNW1	Irregular L-shaped cut aligned N-S and then E-W, cutting into the slope of the hill to the W and N of the Broomhill Cottage building. Open to the south and measures 5 m N-S by 15 m E-W. Sandstone wall with sand and lime mortar aligned E-W. Construction cut for Broomhill Cottage building
3053	KNW1	Sandstone wall with sand and lime mortar aligned N-S. Keyed into E end of wall [3045] and truncated to the S by previous construction/landscaping. Measures 1 m by 0.6 m. Eastern wall of Broomhill Cottage building

APPENDIX 2: PHOTOGRAPHIC REGISTERS

Frame	Description	From	Date
1-2	Views of Galligu in bund under former football pitch	VAR	1/9/16
3	Working shot of topsoil strip	N	1/9/16
4-5	Modern structural remains	VAR	9/9/16
6-8	View of area being reduced	VAR	9/9/16
9	Footpaths and buildings being cleared	N	9/9/16
10	Excavation Area 1 cleared of features	NW	9/9/16
11-12	Excavation Area 2 cleared of features	E	9/9/16
13-14	Area next to compound removed of bunds and topsoil	VAR	9/9/16
15-16	Views of W4 corner	VAR	23/9/16
17	Slurry wall excavations	N	30/9/16
18	Galligu stockpile	W	30/9/16
19	Working shot of Area W1	S	30/9/16
20-25	Line of deep sewer	VAR	30/9/16
26	Galligu under red blazes in W13	E	30/9/16
27	Wash plant at E edge of areas	N	30/9/16
28-34	Panoramic views from E edge of W12	VAR	30/9/16
35-37	Timber piles along canal edge	S	5/10/16
38	Damage to capping stone of canal basin	E	5/10/16
39-40	Modern lining exposed in the strip	VAR	5/10/16
41	o.1m excavation for tree removal	NW	5/10/16
42	Canal view – removing fencing	SW	5/10/16
43-45	Scraping near scheduled area	S	5/10/16
46-47	View of tree removal on slope	S	5/10/16
48-51	Possible damage to piles	VAR	5/10/16
52-55	Views of treatment area	VAR	5/10/16
56-57	Working shots of slurry wall excavations	W	5/10/16
58	Galligu exposed in W3	S	2/11/16
59	Slurry wall excavations	NW	2/11/16
60	Galligu mound	SE	2/11/16
61-64	Depth of made ground in W11-W13	VAR	2/11/16
65	Hot spot excavation in W7 next to road	W	11/11/16
66-69	Barren pit excavations	VAR	11/11/16
70-71	HS16 Excavations	VAR	11/11/16
72-75	Far S edge of slurry wall area	VAR	17/11/16
76	HS13 Progress shot	SE	17/11/16
77	S-Facing Side of wall [3002]	S	28/11/16
78	N-Facing side of wall [3002]	N	28/11/16
79-81	E-Facing side of wall [3002]	E	28/11/16
82-86	W-Facing side of wall [3002]	W	28/11/16
87	General shot of wall [3002]	S	28/11/16
88-89	General shot of wall [3002]	E	28/11/16
90-91	E-Facing side of wall [3003]	E	28/11/16
92-93	General shot of wall [3003]	S	28/11/16
94	Platform [3004] against wall [3003]	E	28/11/16
95-96	Culvert [3011]	S	29/11/16
97	Culvert [3016]	N	29/11/16
98	Culvert [3016]	S	29/11/16
99-109	General shots of whole area	VAR	29/11/16
110	General shots of walls [3005] and [3008]	S	29/11/16
111-112	E-Facing side of wall [3005] showing void [3006] and buttressing [3007]	E	29/11/16
113-114	General shot of E-Facing side of walls [3005] and [3008]	E	29/11/16
115-117	Void [3006] and buttressing [3007]	E	29/11/16
118-119	Buttressing [3007] plan view showing ceramic pipe	E	29/11/16
120-121	Wall [3008]	S	29/11/16
122-123	E-Facing side of wall [3008]	E	29/11/16
124-125	Test pit done previously by VHE [3012]	E	29/11/16
126-127	Timber-lined pit [3013]	E	29/11/16

Remediation works at Sighthill, Glasgow

128-130	Subsided wall [3014]	E	29/11/16
131-134	Subsided wall [3015]	E + S	29/11/16
135-138	Wall [3028]	E + W	29/11/16
139-140	Wall [3029]	E	29/11/16
141-144	Platform [3030]	E + S	29/11/16
145-146	Platform [3027]	E	29/11/16
147-148	Platform [3024]	E	29/11/16
149	Platforms [3024] and [3025]	E	29/11/16
150-151	Platforms [3024] and [3025]	S	29/11/16
152-153	S-Facing section of Platforms [3024] and [3025]	S	29/11/16
154-155	Platform [3023]	E	29/11/16
156-158	Platform [3022]	N	29/11/16
159-160	Wall [3021]	N	29/11/16
161-165	Wall [3020]	E + W	29/11/16
166-167	General shots of [3031], [3032], and [3033]	E + W	29/11/16
168	S-Facing side of wall [3009]	S	29/11/16
169	Plan view of wall [3009]	E	30/11/16
170-171	S-Facing side of wall [3010]	S	30/11/16
172-173	General view of walls [3010 and [3019] with [3018] and [3017]	W	30/11/16
174-175	Curvilinear floor (?) [3018]	W + N	30/11/16
176-178	Brick floor [3017]	N	30/11/16
179	Wall [3019]	E	30/11/16
180-187	General shots of site	VAR	1/12/16
188	N-acing side of wall [3010] with foundations	N	12/12/16
189-190	Wall [3002] during excavation	E	12/12/16
191	Geological test pit E of culvert [3016]	E	12/12/16
192-193	Brick floor S of wall [3020]	W + N	12/12/16
194	Culvert [3035]	S	12/12/16
195	General shot of culvert [3035] with base of platform [3024]	S	12/12/16
196-197	Culvert at the E-facing section, W of [3016]	E	12/12/16
198	Culvert [3036] during excavation	NE	12/12/16
199	Possible waste pit at the E side of side	N	12/12/16
200	Partially exposed culvert [3036]	E	12/12/16
201	Upper cut for culvert [3036]	NE	12/12/16
202	Cut for waste pit/ditch [3037]	N	12/12/16
203	Upper cut for culvert [3036] with exposed cut of waste pit/channel	NE	12/12/16
204	Post-ex of culvert [3036]	NE	12/12/16
205	Lower cut of culvert [3036] partially clean	E	5/12/16
206-207	Exposed culvert [3036] below the edge of ramp	E + NE	5/12/16
208-209	General shots of the SW area of the site (base of excavation)	S	5/12/16
210	General shots of the SW area showing depth below archaeology	N	5/12/16
211-212	General shots of pit/ditch [3037]	N	5/12/16
213	General shot of site before ramp was removed	E	5/12/16
214	General shot of pit/ditch [3037]	S	5/12/16
215-217	Mid-ex during excavation of ramp	VAR	5/12/16
218	Exposed platform at the NW side N of ramp	N	5/12/16
219-220	Brick floor with curving installation similar to [3018], night shots	N	5/12/16
221	Continuation of wall [3015], early morning, not much light	N	6/12/16
222	Curving installation [3042]	-	6/12/16
223	General shot of floor [3041] with wall [3015] and installation [3042]	N	6/12/16
224-227	General shots of excavation area N of ramp with [3015], [3040], [3041], and [3042]	VAR	6/12/16
228-229	General shots during excavation of ramp	VAR	6/12/16
230-235	Post-ex shots of site after ramp was removed	VAR	6/12/16
236-240	Views of zone 3 from NW cable area	VAR	21/2/17
241-244	Views of zone 3 from BT cable area	VAR	21/2/17
245-247	Views of BT cable excavations	VAR	21/2/17
248-249	Views of Zone 2 from mansion excavation area	VAR	21/2/17
250-251	Views of Zone 2 from farm excavation area	VAR	21/2/17

Remediation works at Sighthill, Glasgow

252-254	Views of AH39 stripped to 1 m depth	VAR	13/3/17
255	Plan view of paving [3043]	NE	13/3/17
256	Profile view of paving [3043]	SE	13/3/17
257-258	General views of paving [3043]	VAR	13/3/17
259-260	General views of AG40 spit to 3 m depth	VAR	14/3/17
261	General view of AJ42 mid excavation	N	14/3/17
262	Clay natural in base of AJ42	N	14/3/17
263-264	General views of clay natural at 2.5 m depth/base of AX38	VAR	14/3/17
265-267	Views of excavations in Zone 2	VAR	21/4/17
268-272	General views of Zone 1 – N edge	VAR	2/8/17
273-279	General views of Zone 3	VAR	2/8/17
280-284	General views of Zone 1 – centre	VAR	2/8/17
285-286	Made ground to 5/6 m in Zone 1 – E edge	VAR	2/8/17
287-292	General views of Zone 1 – S edge	VAR	2/8/17
293-300	General views of Zone 2	VAR	2/8/17
301-302	Mansion area reduced	VAR	2/8/17
303-306	Canal basin area	VAR	2/8/17
307-308	Well covered and fenced off	VAR	2/8/17
309-311	N edge of Zone 2	VAR	2/8/17
312-314	View of knotweed zone next to canal	VAR	2/8/17
315-316	AG40 views	VAR	2/8/17
317-322	General views from corner of AE40	VAR	2/8/17
323-324	Top 2 m removed from AE40	VAR	2/8/17
325-327	Trench over pipe showing made ground at required depth	VAR	2/8/17
328-332	Views of site from top of hill	VAR	4/9/17
333-334	Knotweed area at Broomhill Cottages	VAR	6/9/17
335	Rubble in topsoil	N	6/9/17
336-337	S edge stripped	S	6/9/17
338-339	Initial views of walls in Knotweed 1	VAR	6/9/17
340-343	General views of [3044] and [3046]	VAR	6/9/17
344-346	General views of [3045]	VAR	6/9/17
347-348	Views of Knotweed area 2	VAR	6/9/17
349-354	Views of NW edge showing made ground with drains next to possible location of martyrs stone 1674 (RA8)	VAR	6/9/17
355	Wooden sleepers – flooring of house	SW	7/9/17
356-358	Pre-ex views of Knotweed 3	VAR	7/9/17
359	Excavation edge next to canal	SW	7/9/17
360	Modern drain at Knotweed 3	SW	7/9/17
361	Area closer to canal edge	NE	7/9/17
362	View of excavation area at end of day	SW	7/9/17
363-367	General views of building at knotweed 1	VAR	8/9/17
368-369	Pillar [3028] – waterlogged	S/W	8/9/17
370	Wall [3051]	S	8/9/17
371-372	Wooden floor [3047]	E/S	8/9/17
373	Buttress of wall [3045]	W	8/9/17
374-375	Wall [3053]	W	8/9/17
376-377	General views of Knotweed 3 complete	S	12/9/17

APPENDIX 3: FINDS REGISTER

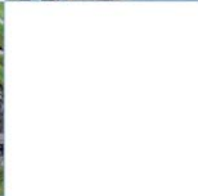
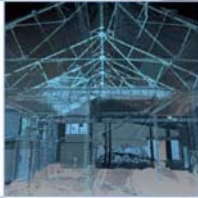
Find No.	Context	Material Type	Description
22	3051	Ce	Clay pipe stem and bowl

APPENDIX 4: 'DISCOVERY AND EXCAVATION IN SCOTLAND' REPORT

LOCAL AUTHORITY:	Glasgow City Council
PROJECT TITLE/SITE NAME:	Remediation works at Sighthill, Glasgow
PROJECT CODE:	23135
PARISH:	Glasgow
NAME OF CONTRIBUTOR:	Kevin Paton
NAME OF ORGANISATION:	AOC Archaeology Group
TYPE(S) OF PROJECT:	Watching Brief
NMRS NO(S):	N/A
SITE/MONUMENT TYPE(S):	N/A
SIGNIFICANT FINDS:	None
NGR (2 letters, 6 figures)	NS 59681 66446
START DATE (this season)	1 st September 2016
END DATE (this season)	12 th September 2017
PREVIOUS WORK (inc DES)	None
MAIN (NARRATIVE) DESCRIPTION: (May include information from other fields)	<p>A series of archaeological monitoring visits and watching briefs were undertaken by AOC Archaeology Group as part of the remediation works at Sighthill, Glasgow.</p> <p>The works showed that the vast majority of the remediation areas had been heavily truncated by the modern residential developments as well as the late 19th and early 20th century chemical works and other industrial constructions shown in the area.</p> <p>One of the earliest industrial structures on site, the original chemical works was shown to survive under 4 m of made ground at the edge of Pinkston Drive. The remaining foundations, floors and walls of the structure were excavated and recorded prior to their removal.</p> <p>A building that may be related to the 19th century Broomhill Cottage was also revealed by the watching brief at the southern edge of the development area. This building survived as four partially fragmented walls, a sandstone pillar and part of an internal wooden floor and external cobbled surface.</p>
PROPOSED FUTURE WORK:	No
CAPTION(S) FOR ILLUSTRATIONS:	N/A
SPONSOR OR FUNDING BODY:	VHE Construction Plc.
ADDRESS OF MAIN	AOC Archaeology Group

Remediation works at Sighthill, Glasgow

CONTRIBUTOR:	Edgefield Road Industrial Estate Loanhead, Midlothian, EH20 9SY
EMAIL ADDRESS:	admin@aocarchaeology.com
ARCHIVE LOCATION	Archive to be deposited in NMRS



AOC Archaeology Group, Edgefield Industrial Estate, Edgefield Road, Loanhead EH20 9SY
tel: 0131 440 3593 | fax: 0131 440 3422 | e-mail: edinburgh@aocarchaeology.com

www.aocarchaeology.com