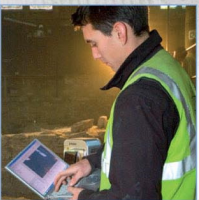
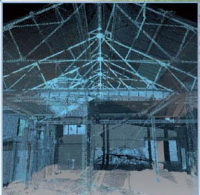
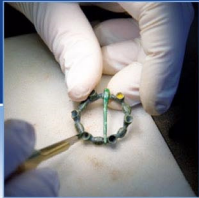


# Arnhall Quarry, Edzell, Phase 10/2: Monitored Topsoil Strip Data Structure Report

AOC 23852  
December 2017



## Arnhall Quarry, Edzell, Phase 10/2: Monitored Topsoil Strip Data Structure Report

---

**On Behalf of:** CgMs Heritage (part of RPS),  
Ocean Point One, 4<sup>th</sup> Floor  
94 Ocean Drive  
Edinburgh  
EH6 6JH  
**On behalf of Breedon Aggregates Ltd.**

**National Grid Reference (NGR):** NJ 6035 7060

**AOC Project No:** 23852

**OASIS No:** aocarcha1-304093

**Prepared by:** Steven Watt

**Date of Fieldwork:** 20<sup>th</sup> November to 13<sup>th</sup> December 2017

**Date of Report:** 15<sup>th</sup> December 2017

This document has been prepared in accordance with AOC standard operating procedures.

**Author:** Steven Watt

**Date:** 15<sup>th</sup> December 2017

**Approved by:** Lindsay Dunbar

**Date:** 20<sup>th</sup> December 2017

**Draft/Final Report Stage:** Draft

**Date:** 20<sup>th</sup> December 2017

**Enquiries to:** AOC Archaeology Group  
Edgefield Industrial Estate  
Edgefield Road  
Loanhead  
EH20 9SY

Tel. 0131 440 3593  
Fax. 0131 440 3422  
e-mail. [admin@aocarchaeology.com](mailto:admin@aocarchaeology.com)



## Contents

	<b>Page</b>
<b>List of Illustrations</b> .....	<b>3</b>
<b>List of Plates</b> .....	<b>3</b>
<b>List of Appendices</b> .....	<b>3</b>
<b>Abstract</b> .....	<b>4</b>
<b>1 INTRODUCTION</b> .....	<b>5</b>
1.1 Background .....	5
1.2 Site Location.....	5
1.3 Archaeological background .....	5
<b>2 OBJECTIVES</b> .....	<b>5</b>
<b>3 METHODOLOGY</b> .....	<b>6</b>
<b>4 RESULTS</b> .....	<b>6</b>
<b>5 CONCLUSION</b> .....	<b>8</b>
<b>6 REFERENCES</b> .....	<b>8</b>
<b>Appendix 1: Context Register</b> .....	<b>11</b>
<b>Appendix 2: Photographic Register</b> .....	<b>13</b>
<b>Appendix 3: Drawing Register</b> .....	<b>15</b>
<b>Appendix 4: Samples Register</b> .....	<b>16</b>
<b>Appendix 5: ‘Discovery and Excavation in Scotland’ Report</b> .....	<b>17</b>

---

## List of Illustrations

Figure 1: Site Location

Figure 2: Location of Monitored Area Showing Locations of Features

## List of Plates

Plate 1: View of Pit [115]

Plate 2: View of shallow curvilinear [117]

## List of Appendices

Appendix 1: Context Register

Appendix 2: Photographic Record

Appendix 3: Drawing Register

Appendix 4: Samples Register

Appendix 5: *'Discovery and Excavation in Scotland'* Report

## Abstract

---

An ongoing archaeologically monitored topsoil strip has been undertaken by AOC archaeology in relation to the extension of works at Arnhall Quarry, Edzell. This report outlines the results of monitored strip of Phase 10/2.

Twelve pits were uncovered spaced sporadically across site with no discernible pattern. The pits were generally filled with a charcoal rich fill and suggested *in-situ* burning. These were very similar to pits found in earlier phases of fieldwork that were found to be Medieval in origin.

Other features included a truncated curving linear, interpreted as a shovel dug drainage ditch. No finds were associated with any of the excavated features.

Further monitoring work will be required for future phases of stripping.

# 1 INTRODUCTION

## 1.1 Background

- 1.1.1 AOC Archaeology Group was commissioned by CgMs Heritage (part of RPS), on behalf of their client Breedon Aggregates Ltd, to undertake an archaeological monitored topsoil strip related to the extension of the works at Arnhall Quarry, Edzell. The topsoil strip was undertaken in order to satisfy a condition set by Aberdeenshire Council as advised on archaeological matters by the Aberdeenshire Council Archaeological Service (ACAS), with regards to an application to extend the lifespan of the quarry by a further 10 years. The works were conducted according to the terms of the *Written Scheme of Investigation for Archaeological Works* (CgMs 2014) approved by ACAS and in accordance with the principles set out in *Scottish Planning Policy* (Scottish Government 2010) and *PAN 2/2011 Planning & Archaeology* (Scottish Government 2011).
- 1.1.2 This report presents the results of Phase 10/2 of the phased topsoil strip for the quarry extension. Due to certain constraints the full extent of this Phase was not stripped, with a final portion remaining. This shall be subject to further monitoring in the future.

## 1.2 Site Location

- 1.2.1 Arnhall Quarry is located to the immediate west of the River North Esk and is surrounded by open farmland (**Figure 1**). Previous phases of mineral extraction (centred on NGR: NJ 6035 7060) are situated to the immediate south of the current quarry face and the Phase 10/2 area.

## 1.3 Archaeological background

- 1.3.1 Previous work at the quarry in 2009 by Headland Archaeology uncovered the remains of pre-improvement field systems and a possible structure dating to prehistory with Middle Neolithic flint flakes and pottery recovered from one pit. A Radiocarbon date of 3780-3640 BC was obtained for this pit (Jones, 2009; Aberdeenshire SMR NO67SW0104 & 0108).
- 1.3.2 Subsequent phases (Phase 10/2, **Figure 1**) were monitored by CFA earlier in 2017. Between the two phases (Phases 9/2 & 10/1) a total of 41 pits sporadically spaced across the fields were encountered (CFA, 2017).
- 1.3.3 In the Phase 6 area, there is a cropmark interpreted as an enclosure, possibly prehistoric in origin (Woodmyre: Aberdeenshire SMR NO67SW0008).

# 2 OBJECTIVES

- 2.1 The objectives of the archaeologically monitored topsoil strip were:

- i. Monitor topsoil stripping in advance of extraction and identify any archaeological features that would be damaged or destroyed by extraction or related works.
- ii. Undertake archaeological recording of any identified archaeological features or remains.

### 3 METHODOLOGY

- 3.1 The ground works consisted of the topsoil stripping of approximately 8.75 hectares to the north of the current quarry face. The stripped area consisted of gently undulating, but generally flat farm land. Topsoil stripping was conducted using a 32 tonne tracked excavator with a bladed ditching bucket. All machine watching was monitored by and experience field archaeologist and all recording carried out in accordance to AOC Archaeology Group's standard procedures as well as the WSI set out by CgMs (2014).

### 4 RESULTS

- 4.1 The monitored topsoil strip was carried out between 20<sup>th</sup> November to 13<sup>th</sup> December 2017. Weather conditions were variable; however archaeological visibility was generally favourable throughout. The various data gathered from the topsoil strip are set out as a series of Appendices:

Appendix 1: Photographic Register

Appendix 2: Context Register

Appendix 3: Sample Register

Appendix 4: Drawing Register

Appendix 5: *'Discovery and Excavation in Scotland'* Report

- 4.2 The topsoil consisted of a silty loam with frequent inclusions of medium sub-rounded stones. Depth was variable across the site at 0.15-0.35 m. This overlay a mid orange-red gravel and sand natural sub-stratum.





Plate 1 View of Pit [115]

- 4.3 In total twelve pits were uncovered across the site, these are detailed further in **Appendix 2 (Figure 2)**. These pits were sporadically placed across the site, generally sub-circular in form with gently sloping sides onto flattish bases. Their dimensions ranged from 0.70 – 1.70 m x 0.60 – 1.35 m x 0.05 – 0.20 m. No obvious pattern was visible. Many of these pits consisted of a single dark black silty fill, lying over a natural that, in some cases, appeared to have been heat affected suggesting *in-situ* burning (**Plate 1**). Whilst charcoal was noted no artefacts were present.
- 4.4 A shallow curvilinear feature [117] (**Plate 2**) was also encountered near the southern face of the quarry. The feature was curving linear in plan and had been visible truncated with flattish base, with extant dimensions being 8.40 m x 0.35-0.40 m x 0.15-0.20 m. The feature was orientated on a N-S alignment and began to straighten up towards the south end before fading. The fill consisted of a mid brown silt, with very frequent medium to large stone inclusions. No artefacts were recovered. Curvilinear [117] appears similar in form, other than curving, to that found previously (CFA, 2017) and could therefore possibly represent a drainage ditch.





**Plate 2 View of shallow curvilinear feature [117]**

- 4.5 No finds were recovered from any of the features encountered that would suggest a date for these features.

## **5 CONCLUSION**

- 5.1 The monitored topsoil strip related to the Phase 10/2 was successful in recording archaeological features across the site.
- 5.2 Initial interpretation would suggest these features to be consistent with those found in the previous two phases (CFA, 2017). Therefore, it is likely that these represent a continuation of the Medieval crop-processing or food preparation in the area.
- 5.3 Further archaeological work shall be required for the completion of Phase 10/2 as well as Phases 5-7 as the quarry progresses, in accordance with the *Archaeological Mitigation Strategy* (CgMs, 2014).

## **6 REFERENCES**

CFA, 2017 *Arnhall Quarry Phases 9/2 & 10/1 Edzell by Brechin, Aberdeenshire Archaeological Watching Brief, Report No. 3564* Unpublished Client Report

CgMs 2014 *Arnhall Quarry, Edzell Phases 5-7 and 9-10 Written Scheme of Investigation for Archaeological works* Unpublished Client Report

Headland Archaeology *Arnhall Sand and Gravel Quarry, Edzell, Angus Results of Archaeological Watching Brief Phase 8/3* Unpublished Client Report

Scottish Government 2010 *Scottish Planning Policy*.

Scottish Government 2011 *PAN 2/2011 Planning & Archaeology*.

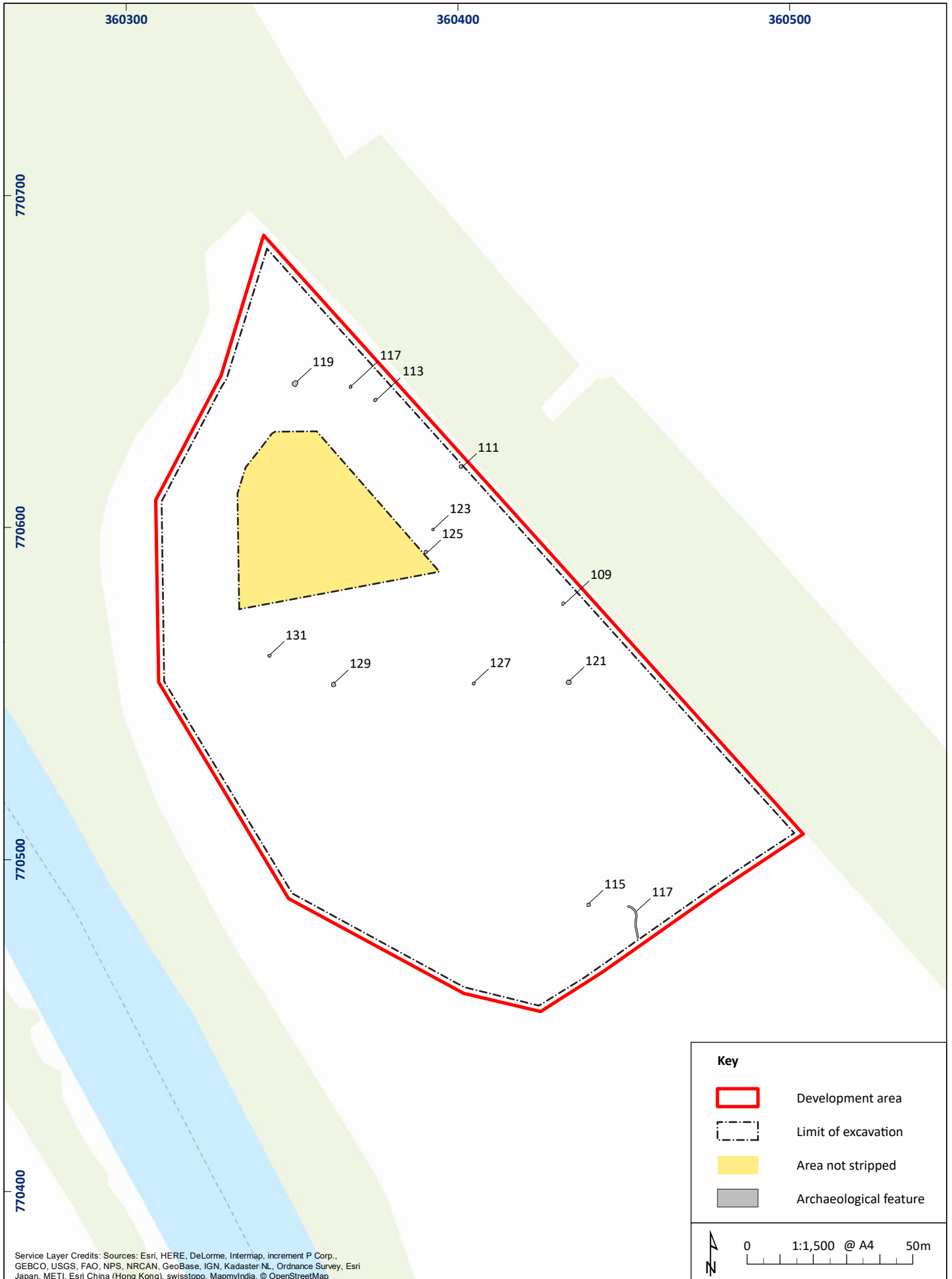


Figure 2: Location of Monitored Area Showing Locations of Features

01/23852/DSR/02/01



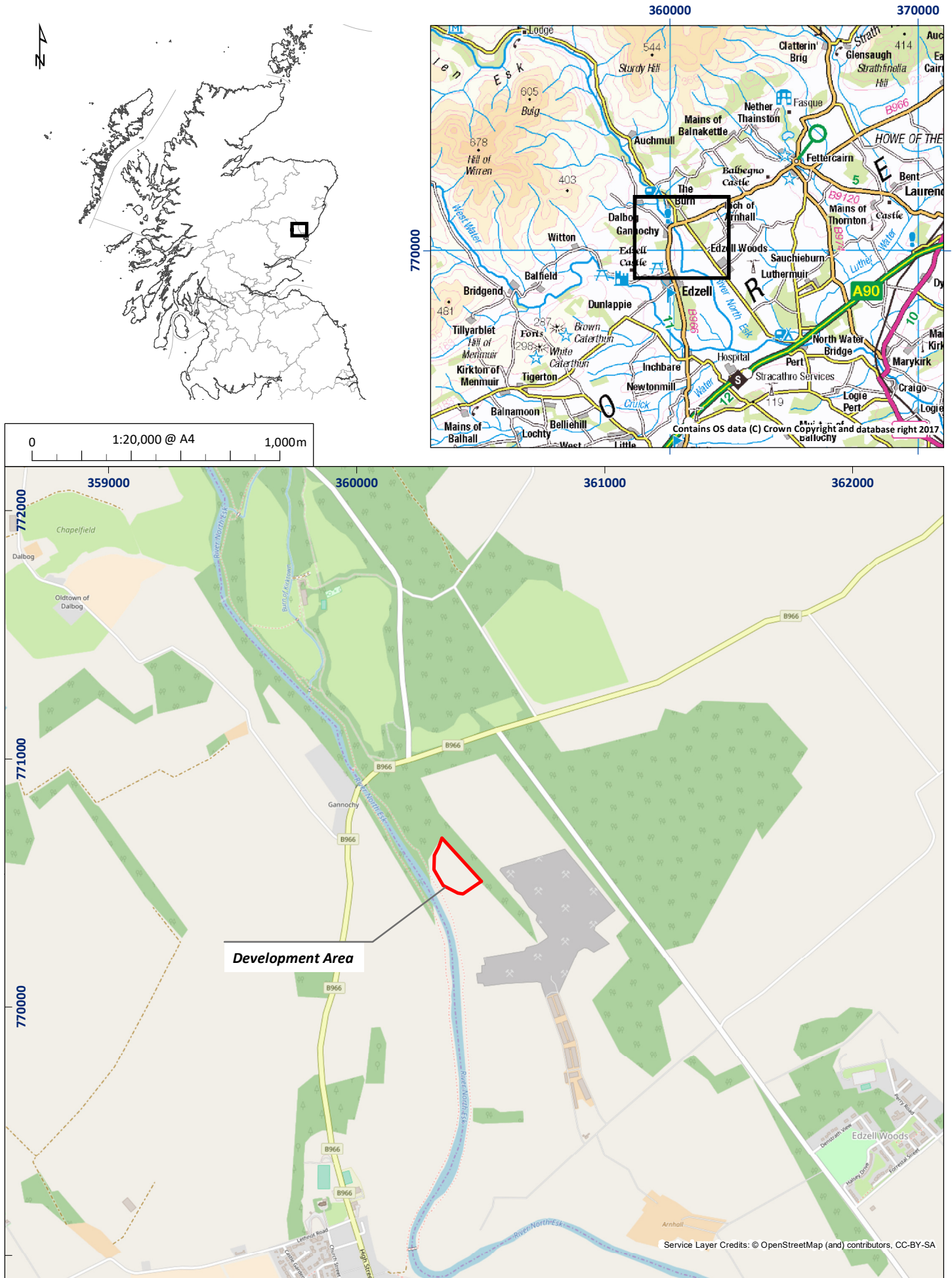


Figure 1: Site location plan

01/23852/DSR/01/01

**Arnhall Quarry, Edzell, Phase 10/2:  
Monitored Topsoil Strip  
Data Structure Report**

**Section 2: Appendices**

## Appendix 1: Context Register

Context No.	Description and Interpretation
Topsoil	Mid brown silty loam <b>Topsoil</b>
Natural	Mid orange/red poorly sorted gravel and sand <b>Natural</b>
[109]	Sub-circular in plan, shallowish sides onto flattish base. 1.0 m x 0.8 m x 0.18 m <b>Cut of burnt pit</b>
[110]	Black Clayey silt with frequent small stone inclusions. Charcoal rich, with evidence of heat affected natural. <b>Fill of pit [109]</b>
[111]	Sub-oval cut, gently sloping sides onto uneven flat base. 0.9 m x 0.8 m x 0.14 m <b>Cut of pit</b>
[112]	Mid greyish-brown silt, heavily bioturbated with small-large tree roots. Occasional small stone inclusions. <b>Fill of pit [111]</b>
[113]	Sub-circular cut, steepish sides onto flattish base. 0.9 m x 0.75 m x 0.15 m <b>Cut of burnt pit</b>
[114]	Black silt fill, friable, occasional stone inclusion with possible stone packing at base. Stones appear heat affected. <b>Fill of pit [113]</b>
[115]	Sub-circular cut with gently sloping sides onto flattish base. 1.0 m x 0.9 m x 0.12 m <b>Cut of pit</b>
[116]	Mid black silt, friable compaction with occasional small to medium stone inclusions. Frequent charcoal. Fill of pit [115]
[117]	Cut of curvilinear, severely truncated, S-N orientation. 8.8 m x 0.35-0.4 m x 0.15 – 0.20 m Slot A – Steepish sides onto flattish base Slot B – Near vertical sides onto flat base <b>Cut of truncated linear, possibly drainage ditch</b>
[118]	Mid reddish-brown silt, frequent medium to large sub-rounded stones. Occasional charcoal inclusions. <b>Fill of [117]</b>
[119]	Truncated circular pit. Very gentle sides onto flat base. Southern half truncated away. Measures 0.8 m x 0.75 m x 0.05 m <b>Truncated burnt pit</b>
[120]	Very dark black silt, frequent small stone inclusions. Heavily charcoaled. <b>Fill of pit</b>
[121]	Large sub-circular cut. Gentle sides onto flat base. 1.35 m x 1.30 m x 0.18 m <b>Cut of pit</b>
[122]	Mid brown-black clayey silt. Frequent small stone inclusions and patches of charcoal. <b>Fill of pit</b>
[123]	Sub-oval cut, steepish sides onto flat base. 0.70 x 0.65 x 0.10 m <b>Cut of burnt pit</b>
[124]	Mid brown black silt, infrequent small stone inclusions. Charcoal. <b>Fill of burnt pit</b>
[125]	Large sub-circular pit, gentle sides onto flat base. 1.7 m x 1.35 m x 0.15 m <b>Cut or large pit</b>
[126]	Mid black silt with occasional brown clay-silt and frequent medium to large stone inclusions. <b>Fill of [125]</b>
[127]	Small sub-oval pit, steepish sides onto flat base. 0.8 x 0.6 x 0.15 m <b>Cut of pit</b>
[128]	Mid brown black compact silt. Occasional small stone inclusions. <b>Fill of [127]</b>
[129]	Sub-oval cut, gentle sides onto flat base. 0.9 m x 0.7 m x 0.08 m <b>Cut of burnt pit</b>
[130]	Mid brown black silt, occasional small stone inclusion. Small layer of charcoal at base. <b>Fill of burnt pit</b>
[131]	Sub-oval cut of pit. Gentle sides onto flat base. 1.1 m x 1.0 m x 0.05 m <b>Cut of burnt pit</b>



[132]	Mid black silty fill with large stone inclusions. <b>Burnt fill of pit</b>
[133]	Sub-oval cut of pit gentle sides onto flattish base. 0.75 m x 0.9 m x 0.12 m <b>Cut of pit</b>
[134]	Mixed brown black silty fill. Frequent small to medium stone inclusions and charcoal. <b>Burnt fill of pit</b>

## Appendix 2: Photographic Register

Frame	Description	From	Date
1	Registration	-	20/11/17
2-5	Views of strip area from south	S	20/11/17
6-10	Progress shot	S	21/11/17
11-15	Views of strip area from north	N	20/11/17
16	Plan view of Pit [109]	W	22/11/17
17	South-west facing section of Pit [109]	SW	22/11/17
18	Location view of Pit [109] from south	S	22/11/17
19	South facing section of [111]	S	23/11/17
20	Plan view of [111]	W	23/11/17
21-22	Location view of [111]	Various	23/11/17
23	South facing section of [111]	S	23/11/17
24	South facing section of [113]	S	23/11/17
25	Plan view of [113]	W	23/11/17
26	Location view of [113]	W	23/11/17
27-32	Progress shots	Various	24/11/17
33	South-facing section of [115]	S	25/11/17
34	Plan view of [115]	W	25/11/17
35	Location view	SW	25/11/17
36-37	Pre-excavation view of linear [117]	N	25/11/17
38-39	Pre-excavation view of linear [117]	W	25/11/17
40	Pre-excavation view of linear [117]	S	25/11/17
41-43	Pre-excavation view of linear [117]	S	25/11/17
44	View of Slot A – [117]	E	25/11/17
45	South facing section Slot A [117]	S	25/11/17
46	General view of [117]	S	25/11/17
47	South-west facing section of Slot B – [117]	SW	25/11/17
48	North facing section of Slot B – [117]	N	25/11/17
49	View of Slot B [117]	E	25/11/17
50-51	General view of [117]	E	25/11/17
52-60	Progress shots	Various	30/11/17
61-66	Progress shots	Various	1/12/17
67-70	View of Quarry face	S	1/12/17
71	South-facing section of pit [119]	S	5/12/17

72	Plan view of [119]	S	5/12/17
73	South facing section of [121]	S	6/12/17
74	Plan view of [121]	W	6/12/17
75	South facing section of [123]	S	6/12/17
76	Plan view of [123]	S	6/12/17
77-78	South facing section of [125]	S	7/12/17
79	Plan view of [125]	E	7/12/17
80	South facing section of [127]	S	7/12/17
81	Plan view of [127]	E	7/12/17
82-86	Progress shots	Various	7/12/17
87	Southeast facing section of [129]	SE	12/12/17
88	Plan view of [129]	W	12/12/17
89	SE-section of [131]	SE	13/12/17
90	Plan of [131]	W	13/12/17
91	S-section of [133]	S	13/12/17
92	Plan of [133]	S	13/12/17
93-109	Views of stripped area	Various	13/12/17

## Appendix 3: Drawing Register

Drawing No.	Feature No.	Sheet	Details	Scale
1	[109]	1	SW-section of Pit [109]	1:10
2	[109]	1	Plan of pit [100]	1:20
3	[111]	1	S-section of Pit [111]	1:10
4	[111]	1	Plan of Pit [111]	1:20
5	[113]	1	S-section of Pit [113]	1:10
6	[113]	1	Plan of Pit [113]	1:20
7	[115]	1	S-section of Pit [115]	1:10
8	[115]	1	Plan of Pit [115]	1:20
9	[117]	1	Plan of Linear [117]	1:20
10	[117]	1	SW-section of Slot A of [117]	1:10
11	[117]	1	SW-section of Slot B of [117]	1:10
12	[117]	1	NE-section of Slot B of [117]	1:10
13	[119]	1	S-section of [119]	1:10
14	[119]	1	Plan view of [119]	1:20
15	[121]	1	S-section of [121]	1:10
16	[121]	1	Plan view of [121]	1:20
17	[123]	1	S-section of [123]	1:10
18	[123]	1	Plan view of [123]	1:20
19	[125]	2	S-section of [125]	1:20
20	[125]	2	Plan of [125]	1:20
21	[127]	2	S-section of [127]	1:10
22	[127]	2	Plan of [127]	1:20
23	[129]	2	SE-section of [129]	1:10
24	[129]	2	Plan of [129]	1:20
25	[131]	2	SSW-section of [131]	1:10
26	[131]	2	Plan of [131]	1:20
27	[133]	2	SE-section of [133]	1:10
28	[133]	2	Plan of [133]	1:20

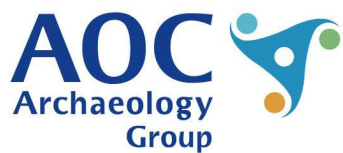
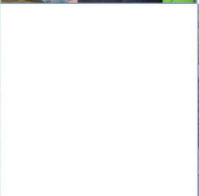
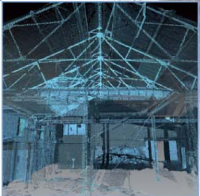
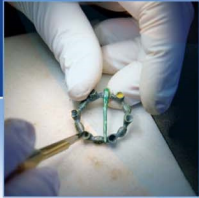
## Appendix 4: Samples Register

Context No.	Quantity (litres)
[118] Slot A	10
[118] Slot B	10
[116]	20
[112]	20
[114]	20
[110]	20
[124]	5
[122]	20
[120]	5
[130]	10
[128]	20
[126]	20
[128]	20
[130]	10
[132]	20
[134]	10

## Appendix 5: 'Discovery and Excavation in Scotland' Report

<b>LOCAL AUTHORITY:</b>	Aberdeenshire Council
<b>PROJECT TITLE/SITE NAME</b>	Arnhall Quarry, Edzell, Phase 10/2
<b>PROJECT CODE:</b>	AOC 23852
<b>PARISH:</b>	Edzell
<b>NAME OF CONTRIBUTOR:</b>	Steven Watt
<b>NAME OF ORGANISATION:</b>	AOC Archaeology Group
<b>TYPE(S) OF PROJECT:</b>	Monitored Topsoil Strip
<b>NMRS NO(S)</b>	NO67SW0008
<b>SITE/MONUMENT TYPE(S):</b>	None
<b>SIGNIFICANT FINDS:</b>	None
<b>NGR (2 letters, 6 figures)</b>	Centred on NS 89677 40906
<b>START DATE</b> (this season)	20 <sup>th</sup> November 2017
<b>END DATE</b> (this season)	13 <sup>th</sup> December 2017
<b>PREVIOUS WORK</b> (incl. DES ref.)	CFA DES 2017 Headland DES 2006 17-18, DES 2007 17-18, DES 2009 21
<b>MAIN DESCRIPTION:</b> (May include information from other fields)	<p><b>(NARRATIVE)</b> An ongoing archaeologically monitored topsoil strip has been undertaken by AOC archaeology in relation to the extension of works at Arnhall Quarry, Edzell. This report outlines the results of monitored strip of Phase 10/2.</p> <p>Twelve pits were uncovered spaced sporadically across site with no discernible pattern. The pits were generally filled with a charcoal rich fill and suggested <i>in-situ</i> burning. These were very similar to pits found in earlier phases of fieldwork that were found to be Medieval in origin.</p> <p>Other features included a truncated curving linear, interpreted as a shovel dug drainage ditch. No finds were associated with any of the excavated features.</p> <p>Further monitoring work will be required for future phases of stripping.</p>
<b>PROPOSED FUTURE WORK:</b>	Ongoing monitoring
<b>CAPTION(S) FOR ILLUSTRS:</b>	N/A
<b>SPONSOR OR FUNDING BODY:</b>	Breedon Aggregates Ltd
<b>ADDRESS OF MAIN CONTRIBUTOR:</b>	Edgefield Road Industrial Estate, Loanhead, Midlothian, EH20 9SY
<b>EMAIL ADDRESS:</b>	<a href="mailto:admin@aocarchaeology.com">admin@aocarchaeology.com</a>
<b>ARCHIVE LOCATION</b> (intended/deposited)	Archive to be deposited in NMRS





**AOC Archaeology Group**, Edgefield Industrial Estate, Edgefield Road, Loanhead EH20 9SY  
tel: 0131 440 3593 | fax: 0131 440 3422 | e-mail: [admin@aocarchaeology.com](mailto:admin@aocarchaeology.com)

[www.aocarchaeology.com](http://www.aocarchaeology.com)