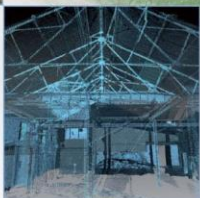
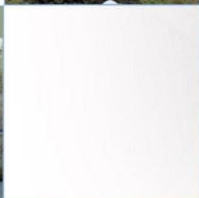
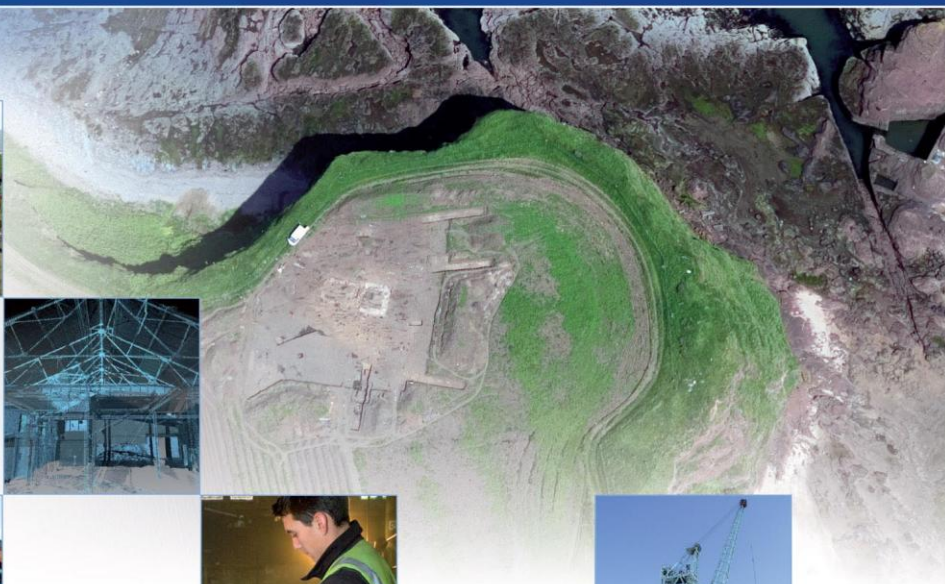


# Glassgreen, Elgin South, Elgin, Morayshire

## Archaeological Evaluation

### Data Structure Report

AOC 23184-3  
22<sup>nd</sup> October 2018



ARCHAEOLOGY

HERITAGE

CONSERVATION

# Glassgreen, Elgin South, Elgin, Morayshire

## Archaeological Evaluation and Watching Brief Data Structure Report

On Behalf of:	Springfield Properties
National Grid Reference (NGR):	NJ 22101 60625
AOC Project No:	23184-3
Planning Ref:	16/01244/APP
Prepared by:	L. Teufel
Illustrations by:	C. Maclver
Date of Fieldwork:	15 <sup>th</sup> -16 <sup>th</sup> October 2018
Date of Report:	22 <sup>nd</sup> October 2018
OASIS No.:	aocarcha1-331317

This document has been prepared in accordance with AOC standard operating procedures.

Authors: L. Teufel

Date: 22<sup>nd</sup> October 2018

Approved by: C. Maclver

Date: 22<sup>nd</sup> October

Report Stage: Final

Date: 22<sup>nd</sup> October

**Enquiries to:** AOC Archaeology Group  
The Old Estate Office  
Rosehaugh Estate  
Avoch  
IV9 8RF

**Mob.** 07972 259255

**Tel.** 01463 819841

**E-mail** [inverness@aocarchaeology.com](mailto:inverness@aocarchaeology.com)



## Contents Page

List of figures .....	2
List of plates .....	2
List of appendices .....	2
Abstract .....	3
1.0 Introduction .....	4
2.0 Project Background .....	4
3.0 Desk-based Assessment .....	8
3.1 Methodology .....	8
3.2 Cartographic Sources .....	8
3.3 Historic Environment Sources .....	11
4.0 Objectives .....	11
5.0 Methodology .....	11
6.0 Results .....	12
7.0 Conclusions and Recommendations .....	14
8.0 References .....	22

### List of figures

**Figure 1:** Site location map

**Figure 2:** Overall site location within Elgin South development

**Figure 3:** Excerpt from Roy Military Map of Scotland, 1747-52

**Figure 4:** Excerpt from OS 6-inch 1<sup>st</sup> edition map, 1874

**Figure 5:** Extract from Ordnance Survey map, 1874, showing investigated areas in red

**Figure 6:** Extract from Ordnance Survey map, 1906, showing investigated areas in red

**Figure 7:** Extract from Ordnance Survey map, 1966, showing investigated areas in red

**Figure 8:** Development area - location of evaluation trenches

### List of plates

**Plate 1:** The development area 1 (pre-excavation), facing north

**Plate 2:** The development area 2 (pre-excavation), facing east

**Plate 3:** The development area 3 (pre-excavation), facing north east

**Plate 4:** Trench 6 example of rubble drain, facing south-south-east

**Plate 5:** Gravel and ceramic drains in trench 6, facing north-east

**Plate 6:** Post excavation of trench 5 showing water seepage, facing north

**Plate 7:** Post excavation of trench 3, facing south-south-west

**Plate 8:** Post excavation of trench 1, facing north-north-east

**Plate 9:** Post excavation of trench 9, facing south-south-east

**Plate 10:** Post excavation of trench 7, facing north-north-west

**Plate 11:** Post excavation of trench 11, facing north-north-west

**Plate 12:** Basal remains of linear (Rig and furrow?), facing east

**Plate 13:** Modern pit, facing north-north-east

**Plate 14:** Modern pit, facing south-south-west

**Plate 15:** Post excavation trench 20, facing north

**Plate 16:** Post excavation trench 19, facing south

**Plate 17:** GI disturbance trench 26, facing east

### List of appendices

**Appendix 1: Trench Register**

**Appendix 2: Photographic Register**

## **Abstract**

---

This report details the findings of an archaeological evaluation carried out to the south of the old golf range and the old Glassgreen cottages in advance of the construction of houses. The evaluation was required as part of a planning requirement as the site is situated within an area of known archaeology.

Evaluation trenching took place over two days between 15<sup>th</sup> and 16<sup>th</sup> of October. Twenty-eight trenches were excavated across the site. Two old field boundaries, rig and furrow, modern plough marks and modern field drains of different types were uncovered. No archaeological features were identified.

---

## 1.0 Introduction

- 1.1 An archaeological trial trenching evaluation was required on behalf of Springfield Properties in advance of the construction of housing on land to the south of the old golf range and to the south of the old Glassgreen cottages, both of which have been removed and a new housing development was under construction during the evaluation (Planning ref: 16/01244/APP). These investigations form Phase 1a of a programme of work in the area of Glassgreen which forms part of a wider programme of works addressing the potential of archaeological impact of the multi-phased mixed-use urban development of Elgin South.
- 1.2 The site lies within the administrative area of Moray Council, which is advised on archaeological matters by Bruce Mann and Claire Herbert of Aberdeenshire Council Archaeology Service (ACAS). A targeted programme of trial trenching across the site was specified in keeping with the policies outlined in *Scottish Planning Policy (2014)* and *PAN 2/2011 Planning and Archaeology (2011)* in order to record the extent and significance of any archaeological remains which may be present within the development area.
- 1.3 The evaluation was carried out over two days between 15<sup>th</sup> and 16<sup>th</sup> of October 2018. Twenty-eight trenches were opened with an area totalling 5400m<sup>2</sup>. No archaeological features were identified, only two old field boundaries, rig and furrow, plough marks and field drains were uncovered.

## 2.0 Project Background

- 2.1 The development area is located to the south of the old golf range and to the south of the old Glassgreen cottages, both of which have been removed and a new housing development is being built (**Figure 1**). The project forms part of a larger, multi-phase development creating a new mixed-use urban extension of Elgin and providing infrastructure for the town's anticipated growth over the next 10-20 years (**Figure 2**). Prior to development, the site comprised undeveloped agricultural fields accessed from the track which used to lead to the Glassgreen cottages (**Plate 1, 2 and 3**).
- 2.2 Although there are no known sites within the immediate development area, the proposed development is located in an area where significant archaeological sites are known to exist. Directly to the north of the development area, aerial photography had identified crops marks suggesting the presence of pits, field boundaries linear cropmarks, a ring ditch and a possible souterrains in the field (SMR NJ26SW0129). However, when AOC did a trial trench evaluation over that area only four pits were identified (SMR NJ26SW0267). Further north another trial trench evaluation carried out by AOC identified a 19<sup>th</sup> century quarry as well as two circular pits which related to the quarry. Remnants of rig and furrow cultivation were also identified (SMR NJ26SW0155). The cottages at Glassgreen were surveyed prior to their demolition and of late 19th / early 20th century construction. They were used as cottages for the farm (SMR NJ26SW 621), however, there are records of a structure being present on the site since the late 16th / early 17th century (Pont's map, c. 1560-1614). The fields investigated during this evaluation were agricultural fields and wooded/scrub areas.
- 2.3 A comprehensive desk based assessment detailing other discoveries within close proximity to the multi-phase Elgin South development can be found in the report (AOC 2016).

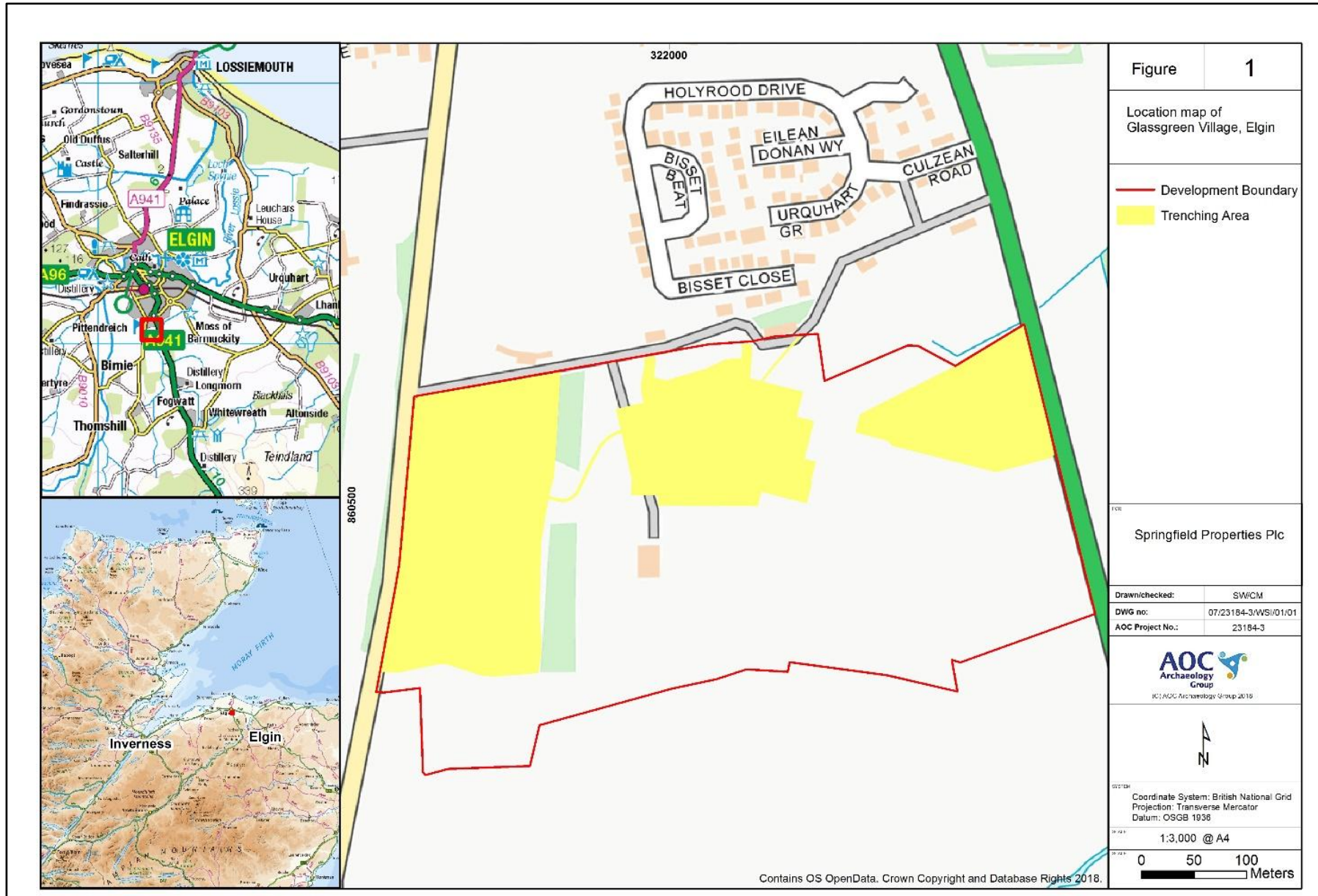


Figure 1: Site Location



**Plate 1: The development area 1 (pre-excavation), facing north**



**Plate 2: The development area 2 (pre-excavation), facing east**



**Plate 3: The development area 3 (pre-excavation), facing north east**

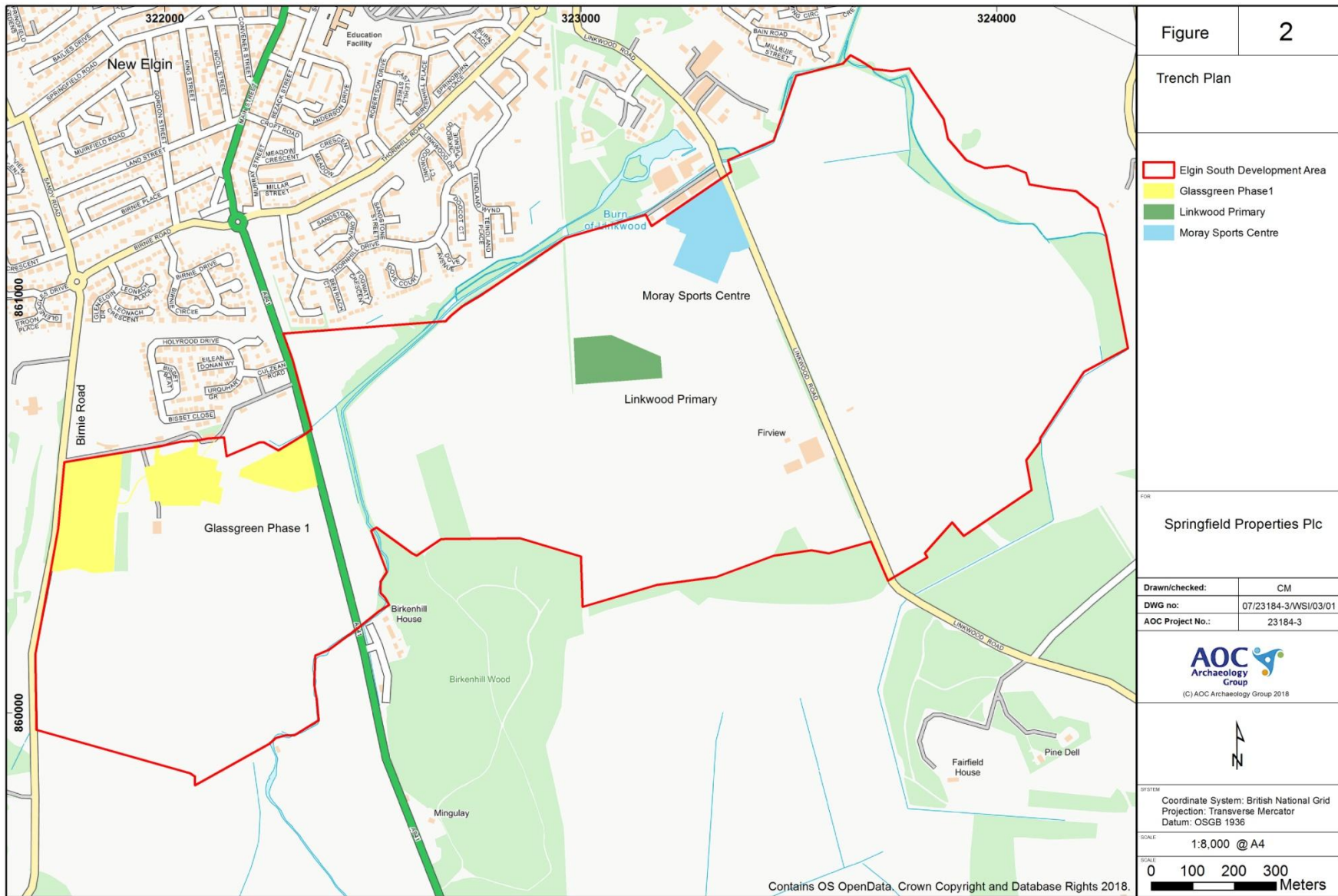


Figure 2: Overall Site Location within Elgin South



### 3.0 Desk-based Assessment

#### 3.1 Methodology

3.1.1 A desk-based assessment was conducted prior to commencement of the evaluation in order to assess the archaeological potential of the area based on previously recorded sites and any historical documentation. A full check of all available historical and archaeological records, aerial photographs and historical maps was conducted using the Moray Sites and Monuments Record (SMR), the National Record of the Historic Environment (NRHE), Ordnance Survey Name Books, Historic Environment Scotland's databases, the National Library of Scotland, statistical accounts and other available records, literary sources or online resources about the site.

#### 3.2 Cartographic Sources

3.2.1 A settlement at Glassgreen has existed since the late 16th / early 17th century and is depicted on Pont's map, c. 1560-1614 (**Figure 3**). It also features on Roy's Military Map of Scotland in ca. 1747-1755 (**Figure 4**). Both of these maps show that the surrounding area where the evaluation took place appears to be agricultural land. The 1st Edition Six Inch 1874 Ordnance Survey (OS) map outlines Glassgreen Farm in detail and shows that the land to the south of the farm is agricultural land and land to the south of the track leading to the farm is wooded/scrub (**Figure 5**). The 1906 Six Inch OS map shows the fields investigated being used in the same manner but the field boundaries are clearer (**Figure 6**). The wooded area is visible on all maps until the 1966 OS map 1:1,250, where most of the wooded area is removed except of two area which are still upstanding today (**Figure 7**). The Ordnance Survey Name Book for Morayshire, 1868-71, states that Glassgreen was a large steading and was the property of the Right Honourable, The Earl of Seafield, Castle Grant, Inverness-shire.



**Figure 3:** Extract from Pont's map, ca. 1560-1614



Figure 4: Extract from Roy's Military Map of Scotland, ca. 1747-1755

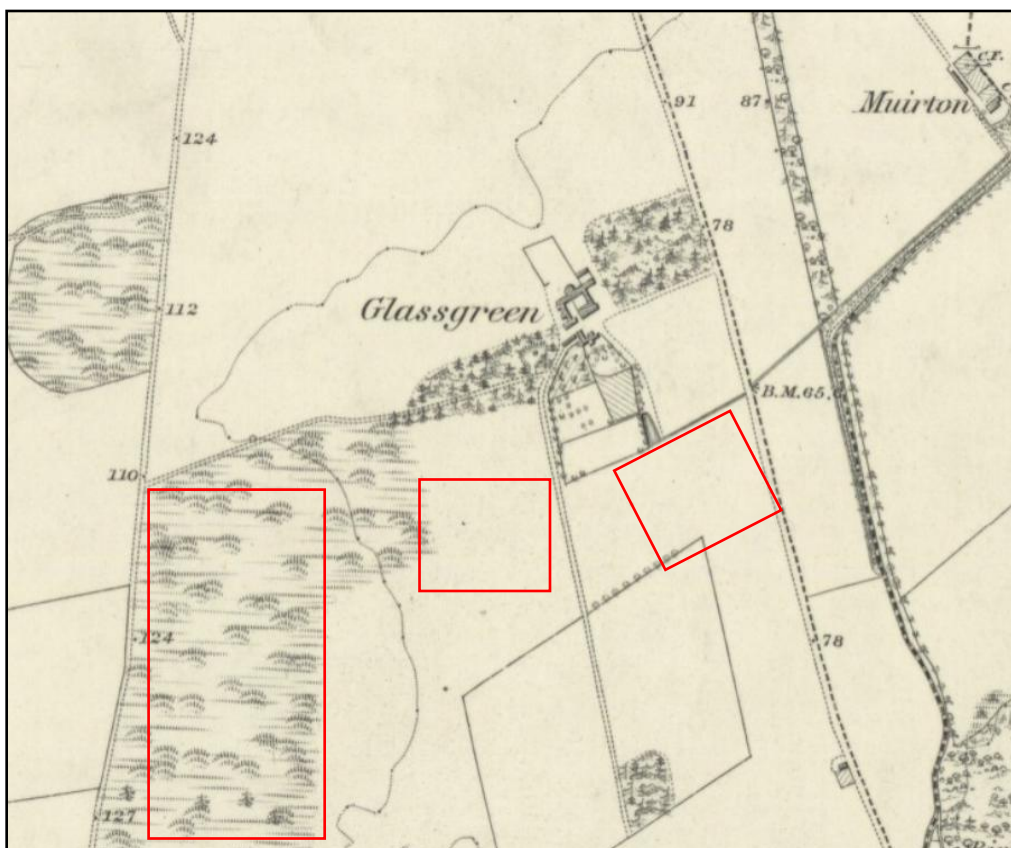


Figure 5: Extract from Ordnance Survey map, 1874, showing investigated areas in red

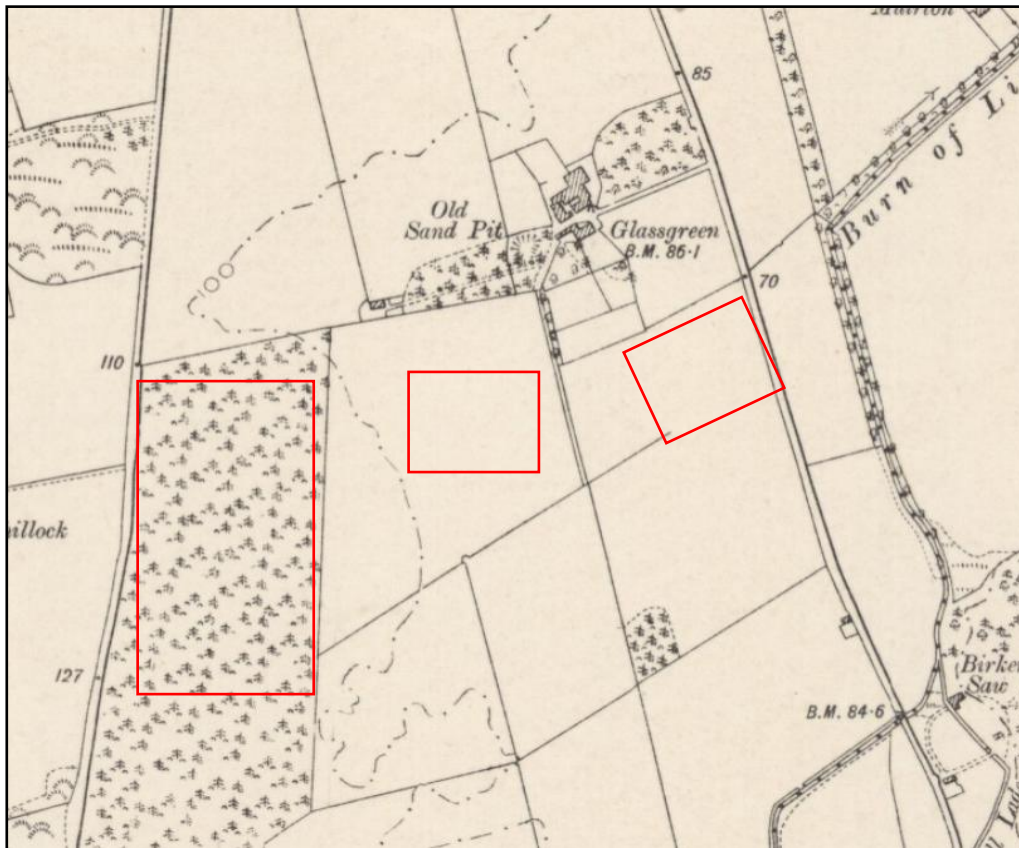


Figure 6: Extract from Ordnance Survey map, 1906, showing investigated areas in red

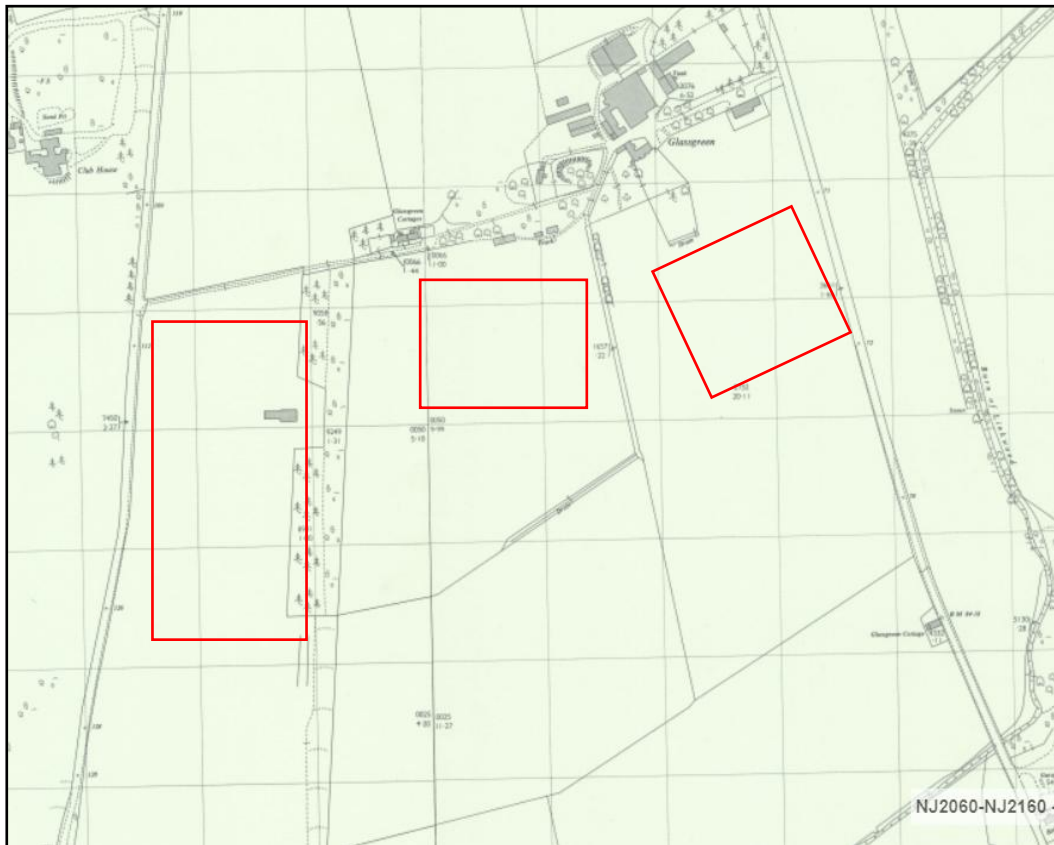


Figure 7: Extract from Ordnance Survey map, 1966, showing investigated areas in red

### 3.3 Historic Environment Sources

3.3.1 A full search of the Moray Sites and Monuments Records (SMR) and the National Record of the Historic Environment (NRHE), via Canmore, was carried out.

3.3.2 Notable sites within approximately 500m of the development area include:

**SMR NJ26SW0129**                      **NJ 22038 60819**                      **Cropmarks, Glassgreen**  
Aerial photography had identified cropmarks suggesting the presences of pits, field boundaries linear cropmarks, a ring ditch and a possible souterrain.

**SMR NJ26SW0267**                      **NJ 22038 60819**                      **Evaluation, Glassgreen**  
A trial trench evaluation was carried out by AOC, four pits where only a few pieces of charcoal were identified.

**SMR NJ26SW0155**                      **NJ 22036 61106**                      **Evaluation, Glassgreen**  
A trial trench evaluation carried out by AOC identified a 19th century quarry as well as two circular pits which related to the quarry. Remnants of rig and furrow cultivation were identified.

**SMR NJ26SW 621**                      **NJ 21923 60665**                      **Survey, Glassgreen**  
The cottages at Glassgreen were surveyed prior to their demolition and of late 19th / early 20th century construction. They were used as cottages for the farm.

### 4.0 Objectives

4.1 The Chartered Institute for Archaeologists (CIfA) defines an archaeological evaluation as ‘a limited programme of non-intrusive and/or intrusive fieldwork which determines the presence or absence of archaeological features, structures, deposits, artefacts or ecofacts within a specified area or site on land... field evaluation defines their character, extent, quality and preservation, and enables an assessment of their worth in a local, regional, national or international context as appropriate’ (CIfA 2014(b)).

4.2 The aims of the archaeological works were:

- i. To establish the presence or absence of archaeological remains within the proposed development area
- ii. To remove by hand any overburden in order to expose the archaeological deposits
- iii. To excavate, sample and record any features or to propose arrangements for their safeguarding, where possible
- iv. To sample deposits for post-excavation work, including environmental analysis and dating
- v. To make recommendations for further measures necessary to mitigate the impact of the development
- vi. To make recommendations for post-excavation work

### 5.0 Methodology

5.1 Work was carried out as per the methodology set out in the addendum (*Glassgreen*, AOC 2018) to *Elgin South, Morayshire Written Scheme of Investigation* (AOC 2016). The

development area was subject to a 7% trial trenching evaluation with an additional 3% contingency if archaeological remains were identified. Twenty-nine trenches were positioned across the site with an area totalling 5400m<sup>2</sup> (7.29% of the 74093m<sup>2</sup> development area).

- 5.2 All trenching was monitored by an archaeologist. The archaeologist directed digging by a mechanical excavator fitted with a straight-edged bucket in order to establish the presence or absence of archaeological remains with the development area. All work was carried out in accordance with the ClfA *Code of Conduct* (2014(a)).
- 5.3 All features of archaeological significance were excavated by hand in order to establish the date, nature, extent and state of preservation of the deposits. Archaeological features and deposits were drawn at a scale of 1:20 and section drawings were drawn at a scale of 1:10. All significant archaeological features were sampled, in the event post-excavation analysis is deemed necessary.
- 5.4 The locations of all archaeological findspots and features and the area covered by the evaluation were plotted using a Trimble Geo-XR Rover capable of centimetre accuracy. The archaeological monitoring was recorded using high resolution digital photography in order to record the process as well as any archaeological features or finds of interest.

## 6.0 Results

### 6.1 Archaeological evaluation

- 6.1.1 The archaeological evaluation took place over two days between 15<sup>th</sup> to 16<sup>th</sup> of October 2018. Work was carried out as per the methodology set out in the addendum (*Glassgreen*, AOC 2018) to Elgin South, Morayshire Written Scheme of Investigation (AOC 2016). The area was subject to a 7% trial trenching evaluation, with trenches of various lengths positioned across the site (**Figure 8**). The total area stripped amounted to 5400m<sup>2</sup>. Numerous modern field drains and plough marks were noted. Full details of the trench records can be consulted in **Appendix 1**.
- 6.1.2 Area 1, which contained Trenches 1 to 6, had a large number and variety of field drains (**Plate 6 and 7**). There were four different types of drain; plastic, ceramic, rubble and gravel drains (**Plate 4 and 5**). A total of 69 drains were recorded in this area. Trench 1 also contained an old field boundary running NW-SE (**Plate 8**).
- 6.1.3 Area 2, which contained Trenches 7 to 14, had fewer drains, only eight, seven of which were identified in Trench 10 (**Plate 9**). There were more linear features including a linear field boundary that ran through Trench 8 to 11 (**Plate 10 and 11**). Trench 10 and 11 also had some evidence of rig and furrow present. Modern plough marks were also visible in Trenches 7 to 11 and Trench 14 (**Plate 12**). Between Trench 11 and 12 there was a modern field boundary and the land uses differed. Trench 12 and 13 were extremely deep and in areas of heavily disturbed but modern activity as evidenced by the presence of plastic and modern brick (**Plate 13 and 14**). This seems to be related to the build up of the land or levelling of the surround land in recent times.

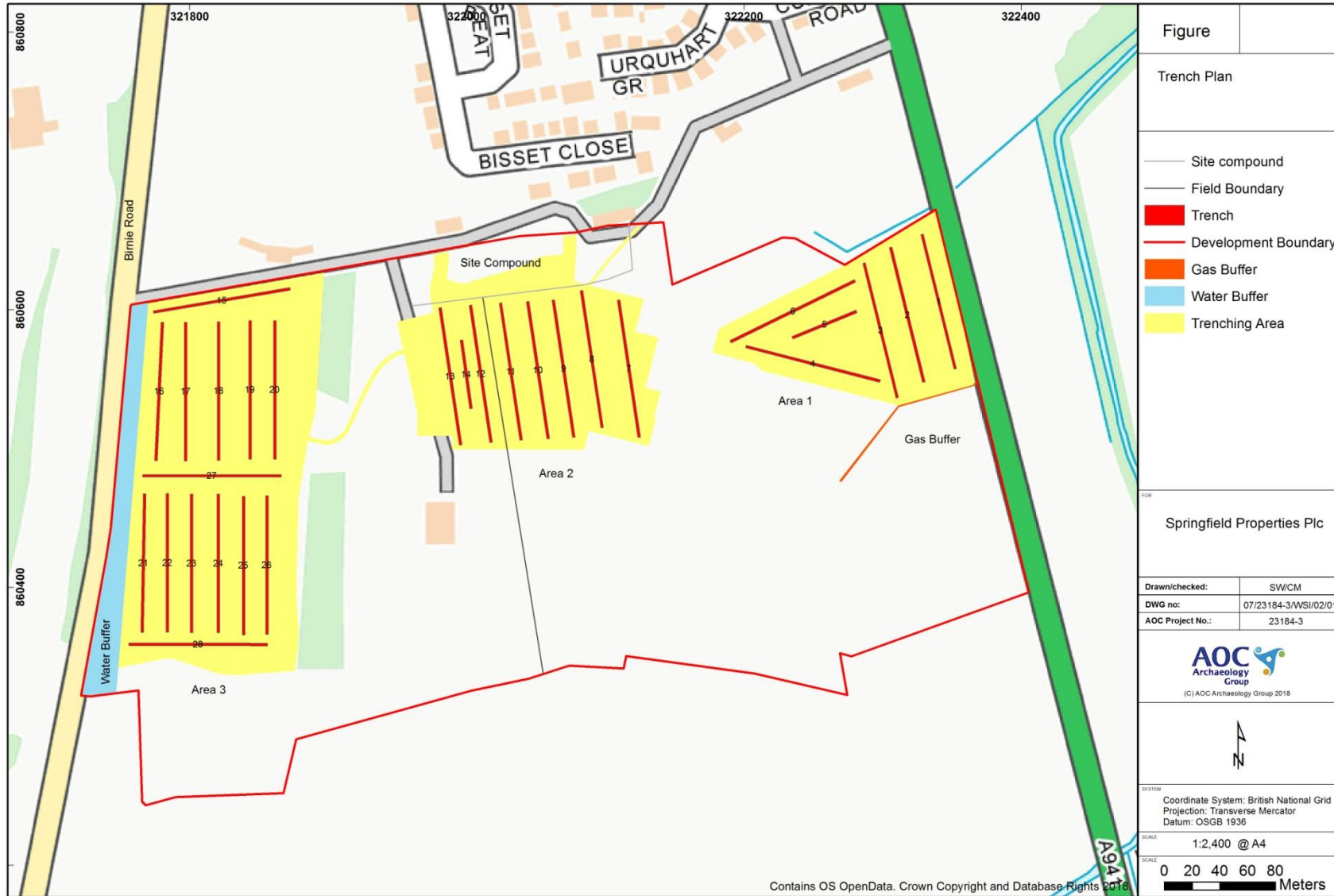


Figure 8: Development area - location of evaluation trenches

6.1.4 Area 3, which contained Trenches 15-28, had only two field drains, possibly due to the land being deforested by 1966 (**Plate 15 and 16**). The area had also been disturbed by GI work which was investigating the ground percolation, testpits were evident in Trenches 16, 20 and 21 (**Plate 17**). Plough marks could also be seen along most trenches running NE-SE.

## 7.0 Conclusions and Recommendations

- 7.1 The archaeological evaluation revealed no features of archaeological interest. A wide range and number of fields drains were identified mostly in Area 1. Two possible old field boundaries were identified and aswell as the basal remains of rig and furrow. Modern plough marks could be seen in the natural in most trenches. Modern landscaping heavily affected the east end of Area 2 where the remains of deep overburden deposits filled with rubble and plastic were identified.
- 7.2 Numerous field drains spanned Area 1, comprising of ceramic, gravel, plastic and rubble drains at regular intervals. Evidence of rig and furrow cultivation was identified in Trench 10 and 11. The area has seen a lot of agricultural activity.
- 7.3 Due to the absence of any significant archaeological features no further work is recommended in these three areas.



**Plate 4: Trench 6 example of rubble drain, facing south-south-east**



**Plate 5: Gravel and ceramic drains in trench 6, facing north-east**



**Plate 6: Post excavation of trench 5 showing water seepage, facing north**





**Plate 7: Post excavation of trench 3, facing south-south-west**



**Plate 8: Post excavation of trench 1, facing north-north-east**



**Plate 9: Post excavation of trench 9, facing south-south-east**



**Plate 10: Post excavation of trench 7, facing north-north-west**



**Plate 11: Post excavation of trench 11, facing north-north-west**



**Plate 12: Basal remains of linear rig and furrow, facing east**



**Plate 13: Modern pit, facing north-north-east**



**Plate 14: Modern pit, facing south-south-west**



**Plate 15: Post excavation trench 20, facing north**



**Plate 16: Post excavation trench 19, facing south**



**Plate 17: GI disturbance trench 26, facing east**

## 8.0 References

AOC. 2016. Elgin South, Elgin, Morayshire: Archaeological Written Scheme of Investigation. Unpublished AOC report.

Chartered Institute for Archaeologists. 2014a. *By-laws of the Institute for Archaeologists: Code of Conduct*.

Chartered Institute for Archaeologists. 2014b. *Standards and guidance: Archaeological Evaluation*.

Chartered Institute for Archaeologists. 2014c. *Standards and guidance: Archaeological Watching Brief*.

Moray Sites and Monuments Record (SMR). 2018. Accessed online at <https://online.aberdeenshire.gov.uk/smrpub> on 6th June 2018.

National Map Library of Scotland. 2018. Accessed online at <http://maps.nls.uk> on 17<sup>th</sup> October 2018.

National Record of the Historic Environment (NRHE). 2018. Accessed online at [canmore.org](http://canmore.org) on 17<sup>th</sup> October 2018.

Ordnance Survey Name Books. Accessed online at <https://scotland'splaces.gov.uk> on 7<sup>th</sup> June 2018.

Scottish Government 2014. *Scottish Planning Policy*.

Scottish Government 2011. *PAN 2/2011 Planning and Archaeology*.

Statistical Accounts of Scotland (1791-1845). Accessed online at <http://stataccscot.edina.ac.uk> on 6<sup>th</sup> June 2018.

## Appendix 1 Trench Register

Trench No.	Dimensions (m)	Depths (m)	Alignment	Description/Comments	Archaeology
1	100	0m-0.4m 50m-0.5m 100m 0.6m	NNW-SSE	Natural-light greyish beige sand, patches of light grey and orange mottled sand. 19m SW-NE remains of rubble drain. 31m NW-SE gravel drain 0.1m wide. 31m NW-SE old field boundary. 67m N-S drain 0.15m. 81m drain 0.5m. Plough marks running N-S.	None
2	100	0m-0.4m 50m-0.35m 100m 0.4m	NNW-SSE	Natural-light greyish beige sand, becoming light grey and orange mottled sand towards SE changes back to beige orange sand at 90m. Wet in centre heavily disturbed by drains. 16m SSW-NNE basal remains of field drain. 17m N-S field drain. 19m N-S drain 0.15m. 31m SSW-NNE drain 0.3m. 38m N-S gravel drain. 39m E-W basal remains of drain. 55m N-S drain 0.1m. 57m N-S drain 0.3m. 85 SW-NE rubble drain 0.5m.	None
3	100	0m-0.35m 50m-03.5m 100m 0.5m	NNW-SSE	Natural- light greyish beige sand with areas of orange sand. 7m N-S rubble drain. 10m S-N drain 0.2m. 11m SW-NE rubble drain. 40m NE-SE drain 0.2m. 40-60m water seepage. 61m ceramic field drain. 64m NE-SW drain 0.2m. 84m NE-SW drain 0.15m. 91m NE-SW drain 0.15m. 97m NE-SW drain 0.15m. 100m NE-SW drain 0.15m.	None
4	100	0m-0.25m 50m-0.3m 100m-0.5m	W-E	Natural- light greyish beige sand with areas of orange sand. 0m ENE-WSW rubble drain 0.4m. 11m ENE-SSW drain 0.15m. 12m ENE-WSW rubble drain 0.4m. 13m NNE-SSW ceramic drain. 14m ENE-WSW rubble drain 0.5m. 16m NE-SW ceramic drain. 20m NE-SW gravel drain 0.1m. 25m NNW-SSW drain 0.3m. 27m NNW-SSE drain 0.3m, ceramic drain ESE-NWN. 30m NE-SE drain 0.2m. 36m ESE-WNW drain 0.2m. 41m ESE-WNW Ceramic drain. 43 N-S gravel drain 0.1m, NE-SW drain 0.15m. 52m 53m NNW-SSE ceramic drain. 53m NNW-SSE ceramic drain. 56m NE-SW ceramic drain. 58m NNW-SSE ceramic drain. 64m N-S gravel drain 0.1m. 68m NE-SW drain 0.2m. 73m NE-SW ceramic drain. 78m NNW-SSE ceramic drain.	None
5	50	0m-0.3m 25m-0.3m 50m-0.3m	NE-SW	Natural-greyish beige and orange matted sand, very wet in area. 1m NNE-SSW ceramic drain. 6m SSW-NNE drain 0.15m. 8m S-N gravel drain 0.1m. 11m SSW-NNE drain 0.2m. 19m SSW-NNE plastic drain. 23m SW-NE drain 0.2m. 26m SSE-NNW ceramic drain. 32m N-s gravel drain 0.1m. 35m N-S ceramic drain 0.1m. 36m WSW-ENE ceramic drain. 49m N-S rubble drain.	None
6	100	0m-0.25m 50m-	SW-NE	Natural-light orange sand, wet at 40-70m. 25m NNW-SSW basal remains rubble	None



Trench No.	Dimensions (m)	Depths (m)	Alignment	Description/Comments	Archaeology
		0.3m 100m-0.3m		drain 0.5m wide. 26m SE-NW drain 0.3m. 35m NE-SW gravel drain 0.1m. 39m ENE-WSW ceramic drain 0.2m. 56m NNE-SSW rubble drain 0.5m. 61m E-W ceramic drain. 71m NNE-SSW drain 0.2m. 77m NE-SW gravel drain 0.1m. 82m NNW-SSE ceramic drain. 84m NE-SW drain 0.3m. 98m NW-SE drain 0.2m. 99m N-S gravel drain 0.1m.	
7	100	0m-0.35m 50m-0.3m 100m-0.35m	SSW-NNE	Natural-light greyish beige sand with gravel at SSW light greyish beige sand to NNE. 3m ENE-WSW extremely shallow linear 0.3m. 6m NNW-SSE extremely shallow linear 0.3m. 9m WSW-ENE very ephemeral remains linear 0.6m. 14m SW-NE very shallow linear 1m. Plough marks N-S.	None
8	100	0m-0.35m 50m-0.35m 100m-0.35m	NNE-SSW	Natural- light greyish beige sand. Plough marks N-S and E-W. 13m WSW-ENE field boundary 1.5m continues through trench 8-11.	None
9	100	0m-0.35m 50m-0.35m 100m-0.35m	SSW-NNE	Natural- light greyish beige sand. Plough marks N-S and E-W. 22m field boundary (continuation from T8) WSW-ENE.	None
10	100	0m-0.35m 50m-0.4m 100m-0.5m	NNE-SSW	Natural- light greyish beige sand with some orange patches. Plough marks occasionally along trench NE-SSW showing clearly at 36m-50m. 5m NW-SE gravel drain 0.2m. 24m NE-SW old field boundary 1m. 58m W-E drain 0.2m. 67m W-E drain 0.2m. 83m W-E drain 0.2m. 85m-95m dark linear drain NW-SE, cut by gravel drain at 86m E-W, cut by drain at 89m NNW-SSE. 96m old field boundary cut by linear feature.	None
11	100	0m-0.3m 50m-0.35m 100m-0.4m	SSW-NNE	Natural- light grey and mid orange mottled sand. Plough marks N-S and E-W. 26m corner of field boundary (seen in T10) NE-SW. 90m SSE-NNW large linear field boundary. 93m ENE-WSW basal remains of rig and furrow (continuation of T10). 97m ENE-WSW basal remains rig and furrow (continuation of T10).	None
12	100	0m-0.25m 50m-0.5m 100m-1m	NNE-SSW	Natural- light grey and mid orange matted sand. Plough marks N-S. Disturbed for first 10m modern (landscape fabric and stones) associated with nearby compound construction/groundwork's. 90m modern disturbance with chunks of wood, stone and gravel, as well as plastic.	None
13	100	0m-0.8m 50m-0.8m 100m-0.5m	NNW-SSE	Topsoil- has a lot of plastic, rubble and other waste material. Evidence for a lot of disturbance, possibly for the build up of land in the NNW end of the trench, maybe hill wash. 14m E-W plough marks. 17m NNW-SSE drain 0.1m only visible at the SSE end. 21m pit with fragments of plastic. 25m variation in natural shallow disturbance. 38m modern pit. 57m Modern disturbance including modern brick	None

Trench No.	Dimensions (m)	Depths (m)	Alignment	Description/Comments	Archaeology
				and waste. 70m Modern disturbance brick and waster visible 3m wide. 74 Modern disturbance brick and waster visible.	
14	50	0m-0.9m 50m-0.2m 100m-0.3m	NNW-SSE	Natural- mid greyish beige with patches of orange and relish brown sand. 35m plough marks.	None
15	100	0m-0.4m 50m-0.3m 100m-0.3m	W-E	Natural-light orange sand with manganese panning. Plough maker E-W and SE-NW	None
16	100	0m-0.35m 50m-0.3m 100m-0.4m	N-S	Natural- light orange yellowish sand with some red-brown patches and manganese panning, at 61m to 66m sand changes to beige yellow sand caused by GI investigation dug for a percolation text. 3m ESE-WNW gravel drain. 10m on word plough marks varying between 0.1-0.3m 22m remains of wooden post? (proven to be the remains of tree root)	None
17	100	0m-0.2m 50m-0.3m 100m-0.3m	N-S	Natural- mid orange sand with manganese panning. Plough makes NE-SW.	None
18	100	0m-0.4m 50m-0.4m 100m-0.35m	N-S	Natural- mid orange sand with manganese panning. Plough makes NE-SW. 74m E-W gravel drain 0.2m.	None
19	100	0m-0.2m 50m-0.25m 100m-0.2m	N-S	Natural- mid orange and light orange sand. Plough marks NE-SW	None
20	100	0m-0.3m 50m-0.25m 100m-0.35m	N-S	Natural- mid orange sand with patched or reddish brown patches. Plough marks NNW-SSE 0.2m-0.3m wide, visible along most of the trench. 41-46m area missed as GI investigation visible which caused disturbance already.	None
21	100	0m-0.4m 50m-0.4m 100m-0.45m	N-S	Natural- mid orange yellow sand some patches of reddish brown sand. 6m E end of trench change in natural possibly caused by GI pit 1.5m by 1.5m. 10m-14m E site of trench variation in natural. Some plough marks, more frequent in N end. Some quite wide.	None
22	100	0m-0.3m 50m-0.35m 100m-0.4m	N-S	Natural-mid orange yellow sand with patches of reddish brown sand, at the south end of trench the sand is yellow. Plough marks visible a long the trench 0.1-0.3m.	None
23	100	0m-0.35m 50m-0.4m 100m-0.4m	N-S	Natural-mid yellow orange with patches of reddish brown sand. Plough marks NE-SW.	None
24	100	0m-0.35m 50m-0.25m 100m-0.25m	N-S	Natural-mid orange sand. Plough marks SE-NW.	None
25	100	0m-0.3m 50m-0.3m 100m-0.35m	N-S	Natural-mid orange sand with occasional small patches of manganese panning. Plough marks SE-NW.	None

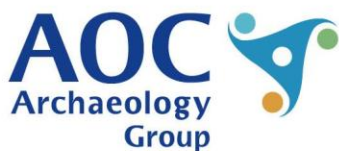
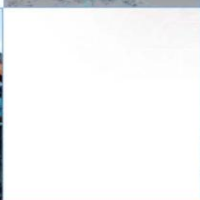
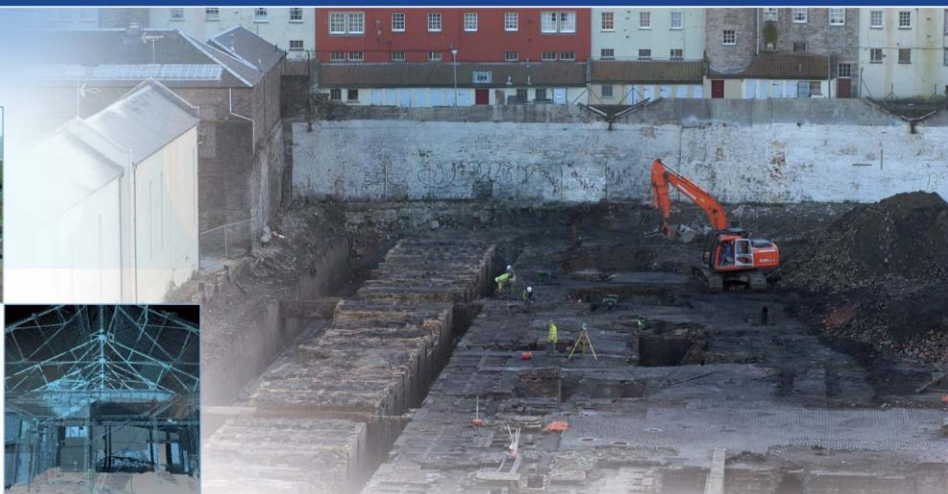
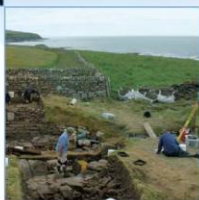
Trench No.	Dimensions (m)	Depths (m)	Alignment	Description/Comments	Archaeology
26	100	0m-0.3m 50m-0.3m 100m-0.3m	N-S	Natural-mid orange sand with occasional small patches of manganese panning. Plough marks SE-NW, especially first 50m.	None
27	100	0m-0.3m 50m-0.3m 100m-0.35m	N-S	Natural-mid orange sand with occasional small patches of manganese panning. Plough marks N-S.	None
28	100	0m-0.35m 50m-0.35m 100m-0.4m	E-W	Natural-mid orange sand with occasional small patches of manganese panning. Plough marks NE-SW.	None

## Appendix 2 Photographic Register

Photo No.	Site No.	Description	Direction Facing	Date
1		Development area 1 pre-excavation of Trench 1-6	SW	15/10/18
2		Development area 1 pre-excavation of Trench 1-6	SE	15/10/18
3		Development area 1 pre-excavation of Trench 1-6	N	15/10/18
4		Development area 2 pre-excavation of Trench 7-14	E	15/10/18
5		Development area 2 pre-excavation of Trench 7-14	E	15/10/18
6		Development area 2 pre-excavation of Trench 7-14	N	15/10/18
7		Development area 1 post excavation of Trench 1-6	E	15/10/18
8-10	T6	Post excavation of Trench 6	NE	15/10/18
11	T6	Post excavation of Trench 6	SW	15/10/18
12	T6	Example of gravel drain and wet area in Trench 6	SSE	15/10/18
13	T6	Example of rubble drain in Trench 6	SSE	15/10/18
14	T6	Gravel and ceramic drains in Trench 6	NE	15/10/18
15	T5	Post excavation of Trench 5 showing water seepage	NE	15/10/18
16	T5	Post excavation of Trench 5 showing ceramic drain in for ground	SW	15/10/18
17	T4	Trench 4 post excavation	E	15/10/18
18	T4	Area disrupted by multiple field drains	N	15/10/18
19	T4	Post excavation of Trench 4	W	15/10/18
20	T3	Post excavation of Trench 3	NNE	15/10/18
21	T3	Post excavation of Trench 3	SSW	15/10/18
22	T2	Post excavation of Trench 2	NNE	15/10/18
23	T2	Post excavation of Trench 2	SSW	15/10/18
24	T1	Post excavation of Trench 1	NNE	15/10/18
25	T1	Post excavation of Trench 1	SSW	15/10/18
26	T7	Post excavation of Trench 7	SSE	15/10/18
27	T8	Post excavation of Trench 8	SSE	15/10/18
28	T9	Post excavation of Trench 9	SSE	15/10/18
29	T9	Post excavation of Trench 9	NNW	15/10/18
30	T8	Post excavation of Trench 8	NNW	15/10/18
31	T7	Post excavation of Trench 7	NNW	15/10/18
32	T10	Post excavation of Trench 10	NNW	16/10/18
33	T10	Post excavation of Trench 10	SSE	16/10/18
34	T11	Post excavation of Trench 11	SSE	16/10/18
35	T11	Post excavation of Trench 11	NNW	16/10/18
36	T12	Post excavation of Trench 12	SSW	16/10/18
37	T12	Area of modern disturbance at 90m	E	16/10/18
38	T12	Post excavation of Trench 12	NNE	16/10/18
39	T11	Basal remains of linear (Rig and furrow?)	E	16/10/18

Photo No.	Site No.	Description	Direction Facing	Date
40	T11	Plough marks Trench 11	N	16/10/18
41		Showing area where work has happened, trench should have gone	NNE	16/10/18
42		Compound area	SE	16/10/18
43	T14	Post excavation of Trench 14	SSW	16/10/18
44	T14	Post excavation of Trench 14	NNE	16/10/18
45	T13	Post excavation of Trench 13	NNE	16/10/18
46	T13	Modern pit	NNE	16/10/18
47	T13	Modern pit	SSW	16/10/18
48	T13	Modern pit	SSW	16/10/18
49	T13	Modern pit showing bricks and plastic	ESE	16/10/18
50	T13	Modern pit	ESE	16/10/18
51	T13	Post excavation of Trench 13	SSW	16/10/18
52		Area 3 pre-excavation	SE	16/10/18
53		Area 3 pre-excavation SW extent	SW	16/10/18
54		Area 3 pre-excavation N extent	N	16/10/18
55		Area 3 pre-excavation	E	16/10/18
56	T16	Post excavation Trench 16	N	16/10/18
57	T16	Post excavation Trench 16	S	16/10/18
58	T16	Showing area of GI disturbance	S	16/10/18
59	T16	Change in sand due to GI disturbance	S	16/10/18
60	T15	Post excavation Trench 15	E	16/10/18
61	T15	Post excavation Trench 15	W	16/10/18
62	T20	Post excavation Trench 20	N	16/10/18
63	T20	GI disturbance unexcavated	E	16/10/18
64	T20	Post excavation Trench 20	S	16/10/18
65	T19	Post excavation Trench 19	S	16/10/18
66	T19	Post excavation Trench 19	N	16/10/18
67	T18	Post excavation Trench 18	N	16/10/18
68	T18	Post excavation Trench 18	S	16/10/18
69	T18	Post excavation trench 18	S	16/10/18
70	T17	Post excavation Trench 17	S	16/10/18
71	T17	Post excavation Trench 17	N	16/10/18
72	T21	Post excavation Trench 21	N	16/10/18
73	T22	Post excavation trench 22	N	16/10/18
74	T22	Post excavation Trench 22	S	16/10/18
75	T21	Post excavation Trench 21	S	16/10/18
76	T27	Post excavation Trench 27	W	16/10/18
77	T27	Post excavation Trench 27	E	16/10/18
78-79		Working shot	SE	16/10/18

Photo No.	Site No.	Description	Direction Facing	Date
80	T26	Post excavation Trench 26	S	16/10/18
81	T26	GI disturbance	E	16/10/18
82	T26	GI disturbance	E	16/10/18
83	T26	Post excavation Trench 26	N	16/10/18
84		Working shot	NE	16/10/18
85	T28	Post excavation Trench 28	W	16/10/18
86	T25	Post excavation Trench 25	N	16/10/18
87	T24	Post excavation Trench 24	N	16/10/18
88	T23	Post excavation Trench 23	N	16/10/18
89	T28	Post excavation Trench 28	E	16/10/18
90	T23	Post excavation Trench 23	S	16/10/18
91	T24	Post excavation Trench 24	S	16/10/18
92	T25	Post excavation Trench 25	S	16/10/18



AOC Archaeology (Inverness) The Old Estate Office Rosehaugh Estate Avoch Ross-shire IV9 8RF  
| tel: 01463 819 841 | mob: 07972 259 255 | e-mail: inverness@aocarchaeology.com

[www.aocarchaeology.com](http://www.aocarchaeology.com)