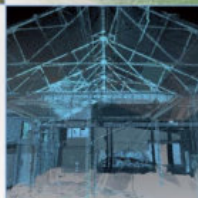


Edinburgh Park: Archaeological Evaluation Data Structure Report

AOC Project No: 22954

1st February 2019

Planning Condition 17/04391/FUL



Edinburgh Park: Archaeological Evaluation Data Structure Report

On Behalf of: Parabola Edinburgh Ltd
101 George Street
Edinburgh
EH2 3ES

National Grid Reference (NGR): NT 17886 71550 & NT 18115 71548 (centred)

AOC Project No: 22954

OASIS NO: aocarcha1 - 341955

Prepared by: Stuart Wilson

Illustration by: Sam O'Leary

Date of Fieldwork: 21st – 25th January 2019

Date of Report: 1st February 2019

This document has been prepared in accordance with AOC standard operating procedures.

Author: Stuart Wilson

Date: 1st February 2019

Approved by: Rob Engl

Date: 7th February 2019

Draft/Final Report Stage: Draft

Date: 7th February 2019

Enquiries to: AOC Archaeology Group
Edgefield Industrial Estate
Edgefield Road
Loanhead
EH20 9SY

Tel. 0131 440 3593
Fax. 0131 440 3422
e-mail. admin@aocarchaeology.com



Contents

	Page
List of Figures	1
List of Plates.....	1
List of Appendices	1
Summary.....	2
1 INTRODUCTION	3
1.1 Project Background	3
1.2 Site Location.....	3
2 OBJECTIVES	4
2.1 The objectives of the archaeological works were to:	4
3 HISTORICAL & ARCHAEOLOGICAL BACKGROUND	4
4 METHODOLOGY	11
6 CONCLUSIONS & RECOMMENDATIONS	15
APPENDIX 1: Trench Descriptions	19
APPENDIX 2: Photographic Record	32
APPENDIX 3: ' <i>Discovery and Excavation in Scotland</i> ' Report.....	36

List of Figures

- Figure 1: Site Location plan
- Figure 2: Trench and test pit locations
- Figure 3: Extract from from Adair's map, 1682
- Figure 4: Extract from from Adair's map, 1735
- Figure 5: Extract from Roy's map, ca 1747 – 55
- Figure 6: Extract from Laurie's map, 1786
- Figure 7: Extract from Kirwoods map, 1817
- Figure 8: Extract from Ainslie's map 1821
- Figure 9: Extract from Hunter & Anderson's map, 1834
- Figure 10: Extract from Ordnance Survey, 1853
- Figure 11: Extract from Ordnance Survey map, 1895
- Figure 12: Extract from Ordnance Survey map, 1944

List of Plates

- Plate 1: PX shot of Trench 1
- Plate 2: PX shot section of Trench 3 showing made ground and redeposited subsoil
- Plate 3: NW facing section of Trench 14
- Plate 4: N facing section of Trench 8
- Plate 5: PX shot of Trench 12
- Plate 6: PX shot of Trench 15
- Plate 7: PX shot of Trench 62

List of Appendices

- Appendix 1: Trench Descriptions
- Appendix 2: Photographic Record
- Appendix 3: *'Discovery and Excavation in Scotland'* Report

Summary

This report presents the results of an archaeological evaluation undertaken by AOC Archaeology Group on behalf of Parabola Edinburgh Ltd, on a land plot located at Edinburgh Park.

The site comprised a brownfield site divided into two areas measuring 6ha and 1.6ha respectively. The development area was known for substantial deposits of made ground. Excavations were limited due to the presence of live services

The evaluation consisted of a combination of test pits and Trenches due to the depth of the made ground being unstable. A single area to the north east of site was not investigated as it was frequently in use by members of the public.

The evaluation revealed extensive deposits of made ground directly overlying a natural clay which demonstrated varying degrees of disturbance. The evaluation demonstrated that no in situ topsoil or subsoil was present across the site. These deposits had been removed during previous construction works.

No significant archaeological features or artefacts were recovered during the evaluation.

1 INTRODUCTION

1.1 Project Background

1.1.1 A programme of archaeological works was required by Parabola Edinburgh Ltd in respect to a proposed development at Edinburgh Park, Edinburgh. These were stipulated in the Planning Condition (17/04391/FUL). The site lies within the administrative area of the City of Edinburgh Council, which is advised on archaeological matters by CECAS. The archaeological works were conducted in accordance with the principles as set out in *Scottish Planning Policy* (2014) and *Planning and Archaeology 2/2011* (2011) and consisted of an archaeological evaluation by trial Trenching and test pitting

1.1.2 The archaeological works are necessary as part of the forthcoming planning condition on the development. The need for and scope of the archaeological works has been determined by the City of Edinburgh Council, who are advised on archaeological matters by the City of Edinburgh Council Archaeology Service (CECAS).

Infrastructure Condition 1 – *No development shall take place until the applicant has secured the implementation of a programme of archaeological work in accordance with a written scheme of investigation which has been submitted to and approved in writing by the Planning Authority, having first been agreed by the City Archaeologist.*

AMC Condition 1 – *No development shall take place on the site until the applicant has secured the implementation of a programme of archaeological work (excavation, analysis and reporting, publication, public engagement, interpretation) in accordance with a written scheme of investigation which has been submitted by the application and approved by the Planning Authority.*

The work would be carried out by a professional archaeological organization, either working to a brief prepared by CECAS or through a written scheme of investigation submitted to and agreed by CECAS for the site. Responsibility for the execution and resourcing of the programme of archaeological works and for the archiving and appropriate level of the results lies with the applicant.

1.1.3 The programme of archaeological works is in keeping with the policies outlined in *Scottish Planning Policy* (2014) and *PAN 2/2011 Planning and Archaeology* (2011) in order to record the extent and significance of any archaeological remains which may be present within the development area.

1.2 Site Location

1.2.1 The proposed development is based on two separate areas (Areas 1 & 2 Figure 1) located to the immediate east of the A702 (Edinburgh City Bypass) and to the immediate north-east of the Hermiston Gait motorway exchange. The railway line and the Edinburgh Park railway station are located to the south and to the north and east is a range of commercial development. The areas are centred on NGR: NT 17886 71550 (Area 1) and NT 18115 71548 (Area 2) (Figure 1).

2 OBJECTIVES

- 2.1 The objectives of the archaeological works were to:
- i) determine and assess the character, extent, condition, quality, date and significance of any buried archaeological remains within the proposed development area;
 - ii) advise and implement an appropriate form of mitigation strategy compliant with *Scottish Planning Policy* (2014) and *Planning and Archaeology 2/2011* (2011), such as excavation, post-excavation analyses and publication, given the infeasibility of preserving the archaeological material *in situ*, should significant archaeological remains be encountered.
 - iii) report on the results of the archaeological evaluation.

3 HISTORICAL & ARCHAEOLOGICAL BACKGROUND

3.1 Prehistoric

- 3.1.1 There are a number of known prehistoric remains in the vicinity of the development area. The closest of these is the Redheughs Enclosure, which is located to the east of development area (NMRS Ref: NT17SE54). It was partially investigated in the late 1990s and in the early 2000s as part of commercial development there. The 1996 excavations were thought to have exposed the north end of an oval double-ditched enclosure, which had previously been identified as a cropmark (Collard 1996). However, a later 2002 excavation identified that this was a natural feature, but they then went on to expose three ditches of potential prehistoric date, including a cornered ditch with a second ditch running parallel (Jones 2002).
- 3.1.2 To To the north of the development area is the Gogar Green Ring Ditch (NMRS Ref: NT17SE 21). This ring ditch, located just to the east of the A702, is thought to have been ploughed out by 1992 (Johnstone 1992). Excavations in that year identified a slight unnatural hollow on the east end which had been built up to form a basin 18m across, lined with cobbles (*ibid*). The banks of it had also been built up to a height of 1.5m. There was very little dating evidence from the excavations, although some pottery – of Bronze Age date – was found (*ibid*). To the west of this, and to the west of the A720, is another prehistoric feature consisting of a linear feature (NMRS Ref: NT17SE58). However, little information on this feature is recorded in the NMRS.
- 3.1.3 Further to the east of the development two cists were discovered at South Gyle (NMRS Ref: NT17SE20). They were located in 1978 during the construction of a factory building upon which they were excavated. One of the Cists contained fragments of bone (Holmes 1979). Little else is recorded in the NMRS about these features.
- 3.1.4 Another linear feature has also been discovered further to the west just to the east of Millburn Tower (NMRS Ref: NT17SE28). No information about this feature is mentioned in the NMRS, so is assumed to still be present, although its date is uncertain.

3.2 Roman

- 3.2.1 The only potential site of Roman date within the vicinity of the development area is a Roman Camp at Gogar Green (NMRS Ref: NT17SE24), positioned to the west of the former ring ditch mentioned above, although these have not been securely dated. It was first discovered in aerial photographs taken in 1980. The site was investigated in the late 1980s in advance of the excavation of the City Bypass A702. Ditches with V-shaped profile were discovered about 1m in width and 0.5m in depth (Maxwell & Wilson 1987). A Roman course-ware vessel was uncovered at the base of one of the ditches (*ibid*). The camp itself is thought to have measured 300m north/south and about 250m (east/west). It is unknown how much of the camp survived the construction of the City Bypass.

3.3 Medieval

- 3.3.1 There are no known medieval sites in or within the vicinity of the development area. It is unknown how this area was used after the Roman period and into the early medieval period. It is possible the land was exploited for agriculture.

3.4 Post-Medieval – 19th century

- 3.4.1 The first cartographic depictions of the development area date to the 17th century. John Adair's map of 1682 marks the area as open land with Redheughs Farm to the east of the Gogar Burn (Figure 2). There are no earlier maps that depict the area in any detail, so it is assumed that a settlement at Redheughs date back to at least the mid-late 17th century. The NMRS records the site as now demolished (NMRS Ref: NT17SE265), probably in advance of the modern large-scale commercial development that took place here in the 1990s. To the east of this is the settlement of Broomhouse. There is a larger area of what appears to be marshland to the north-east. By Adair's 1735 map, the area of marshland is annotated as 'Gogar Loch', with Redheughs and Broomhouse also still depicted (Figure 3). William Roy's map dating to ca. 1747 – 55 depicts the area in slightly more detail, with the Gogar Loch depicted slightly to the south of the where it is annotated in Adair's 1735 map (Figure 4). Another farm steading called 'Lairdship' also appeared by this date. Moving to the late 18th century, John Laurie's 1786 map shows the three farmsteads and the loch – which is now referred to as Corstophine Meadow – to the north (Figure 5).



Figure 3: Extract from Adair's map, 1682



Figure 4: Extract from Adair's map, 1735



Figure 5: Extract from Roy's map, ca. 1747-55



Figure 6: Extract from Laurie's map, 1786

3.4.2 Into the 19th century, Kirkwood's 1817 map annotates Redheugh, South Gyle and Broomhouse, although Lairdship has gone (Figure 6). It does appear on Ainslie's 1821 map, however, so this may be a simple omission (Figure 7). The Corstophine Meadow is simply shaded on Kirkwood's map, but is not depicted on Ainslie's map, although this latter map is more schematic and larger scale. Hunter & Anderson's map of 1834 shows a similar picture of the development area as open farmland (Figure 8).

3.4.3 The First Edition Ordnance Survey of 1852 identifies the development area in more detail in the mid-19th century (Figure 9). The development is shown as open farmland, with the large

planned steading of Redheughs to the north, clearly a remodeling from its late 17th origins. The steading here is early – mid 19th century (at most very late 18th century) in date here. Gogar Bank farmsteading has also been established to the west of this across the Gogar Burn (date 1834 – 1853). A similar farm at Sighthills is also depicted to the north-east. The major development, however is the establishment of the railway to the south, the Edinburgh and Glasgow Railway, with a station at Gogar.



Figure 7: Extract from Kirwood's map, 1817



Figure 8: Extract from Ainslie's map, 1821



Figure 9: Extract from Hunter & Anderson's map, 1834



Figure 10: Extract from Ordnance Survey, 1853

3.4.4 By the late 19th century, there has been another railway added to the north of the site, the Corstorphine and Dalmeny section of the railway, as depicted on the 1896 Ordnance Survey map (Figure 10). Throughout the early to mid -20th century, the development site remained

open farmland, although the farms at Redheugh and Gogar Bank expanded significantly, as can be seen on the 1944 Ordnance Survey map (Figure 11).



Figure 11: Extract from Ordnance Survey map, 1895



Figure 12: Extract from Ordnance Survey map, 1944

3.5 Modern

3.5.1 Into the late 20th century, the site remained open farmland until it was exploited in the 1990s for huge commercial development. The construction of the Edinburgh City Bypass (constructed between 1981 – 1990) and the M8 motorway and Hermiston Gait roundabout facilitated this greatly.

4 METHODOLOGY

- 4.1 The archaeological evaluation was carried out using two 13 tonne tracked excavators equipped with 2m wide toothless ditching buckets over a 5 day period between 21st and 25th of January. Conditions were good for the most part ensuring excellent visibility.
- 4.2 The archaeological investigations were confined to pre-determined areas due to the presence of live services, restricted access and areas where stands of Giant Hogweed had been treated and removed. Trial pit and Trench locations were uploaded onto a Trimble R6 GPS and marked out prior to any ground breaking works taking place. The first Trenches excavated revealed a deposit of made ground that extended up to and often beyond 5.0m in depth. Test pitting was therefore considered a more suitable approach given the depth of the Trenches and their overall instability. Trenching was resumed in shallower areas when considered safe to do so. All Trenches and test pits were backfilled and compacted to the original ground level immediately after opening due to the frequent presence of the public on site outside of work hours.
- 4.3 The Trenching and test pitting totalled 450m and despite the restrictions placed on the evaluation, substantial coverage was still achieved. All Trenches and test pits were recorded and photographed with their locations surveyed using a R6 Trimble GPS. Upon completion all materials and tools were removed from site and the post excavation photography was completed.
- 4.4 Areas which had already been stripped for Giant Hogweed under archaeological watching brief conditions were not Trenched or test pitted. An area to the north-east of site in the western area was not investigated as it was landscaped and in constant use by employees from the Business Park. Areas to the extreme east and west of the development area were also omitted from investigation as they were found to be car parks with the easterly most one fenced off with no access and the westerly most one still in use by the business park.

5 RESULTS

- 5.1 The archaeological evaluation revealed deposits of made ground existing across the entire site. These deposits varied between 0.8m and in excess of 5m in depth. The made ground lay immediately over a natural sub strata which varied between a yellow/grey sandy boulder clay to a mid orange sandy gravel. The sub strata demonstrated significant signs of disturbance across the entire development area. There was no evidence of any *in situ* buried topsoils, b horizons or subsoil across the site. It would appear that previous construction works associated with the creation of the existing business park and the Edinburgh tram line has removed the former ground surface to natural clay. This area was then used to dump spoil and waste deposits creating the existing ground levels.



Plate 1: PX shot of Trench 1



Plate 2: PX shot section of Trench 3 showing made ground and redeposited subsoil



Plate 3: NW facing section of Trench 14



Plate 4: N facing section of Trench 8



Plate 5: PX shot of Trench 12



Plate 6: PX shot of Trench 15



Plate 7: PX shot of Trench 62

6 CONCLUSIONS & RECOMMENDATIONS

- 6.1 The evaluation though restricted in scope revealed that the proposed development area had been denuded of *in situ* deposits during previous episodes of construction. This had in effect removed all original deposits to natural clay.
- 6.2 No significant archaeological finds or features were encountered during the trial Trenching and test pitting. The site is considered to be archaeologically sterile with no further works considered necessary. This will however require confirmation by CECAS.

7 REFERENCES

7.1 Bibliographical References

AOC Archaeology (2018) Edinburgh Park.. *Archaeological Evaluation: Written scheme of Investigation*. Unpublished Client Report.

Collard, M 1996 'Cultins Road (City Parish of Edinburgh)', *Discovery & Excavation in Scotland (DES)*, 1996, pp 38 – 39

Holmes, N M M 1979 'South Gyle, Short Cists: Mounds Possible', *Discovery & Excavation in Scotland (DES)*, 1979, p 114

Johnstone, D A 1992 'Maybery Park (Currie & Ratho Parishes), Prehistoric Open Settlement and Landscape: Medieval Landscape', *Discovery & Excavation in Scotland (DES)*, 1992, pp 52 - 53

Jones, E 2002 'Cultins Road, City of Edinburgh (City Parish of Edinburgh)', *Discovery & Excavation in Scotland (DES)*, 2002, pp 47 – 48

Scottish Planning Policy SPP23. 2008 *Archaeology and Planning*. Scottish Government Nov 2008.

Scottish Government 2011 *Planning and Archaeology 2/2011*.

7.2 Cartographic References

1682	John Adair	Map of Midlothian
1735	John Adair	A Map of Midlothian
1747 - 55	William Roy	Military Map of Scotland
1786	John Laurie	A Plan of Edinburgh and Country Adjacent
1817	Robert Kirkwood	A Map of the Environs of Edinburgh
1821	John Ainslie Ainslie's	Map of the Southern Part of Scotland
1834	W Hunter & J Anderson	Plan of the Environs of Edinburgh
1853	Ordnance Survey	Edinburghshire, Sheet 5
1895	Ordnance Survey	Edinburghshire Sheet II.SE Surveyed 1893

1896	Ordnance Survey	Edinburghshire Sheet III.SW
1908	Ordnance Survey	Edinburghshire Sheet III.SW
1909	Ordnance Survey	Edinburghshire Sheet II.SE Surveyed 1906
1915	Ordnance Survey	Edinburghshire Sheet II.SE Surveyed 1912
1923	Ordnance Survey	Linlithgowshire Sheet nIX Survey 1914
1944	Ordnance Survey	Edinburghshire Sheet II.SE Surveyed 1938
1944	Ordnance Survey	Edinburghshire Sheet III.SW

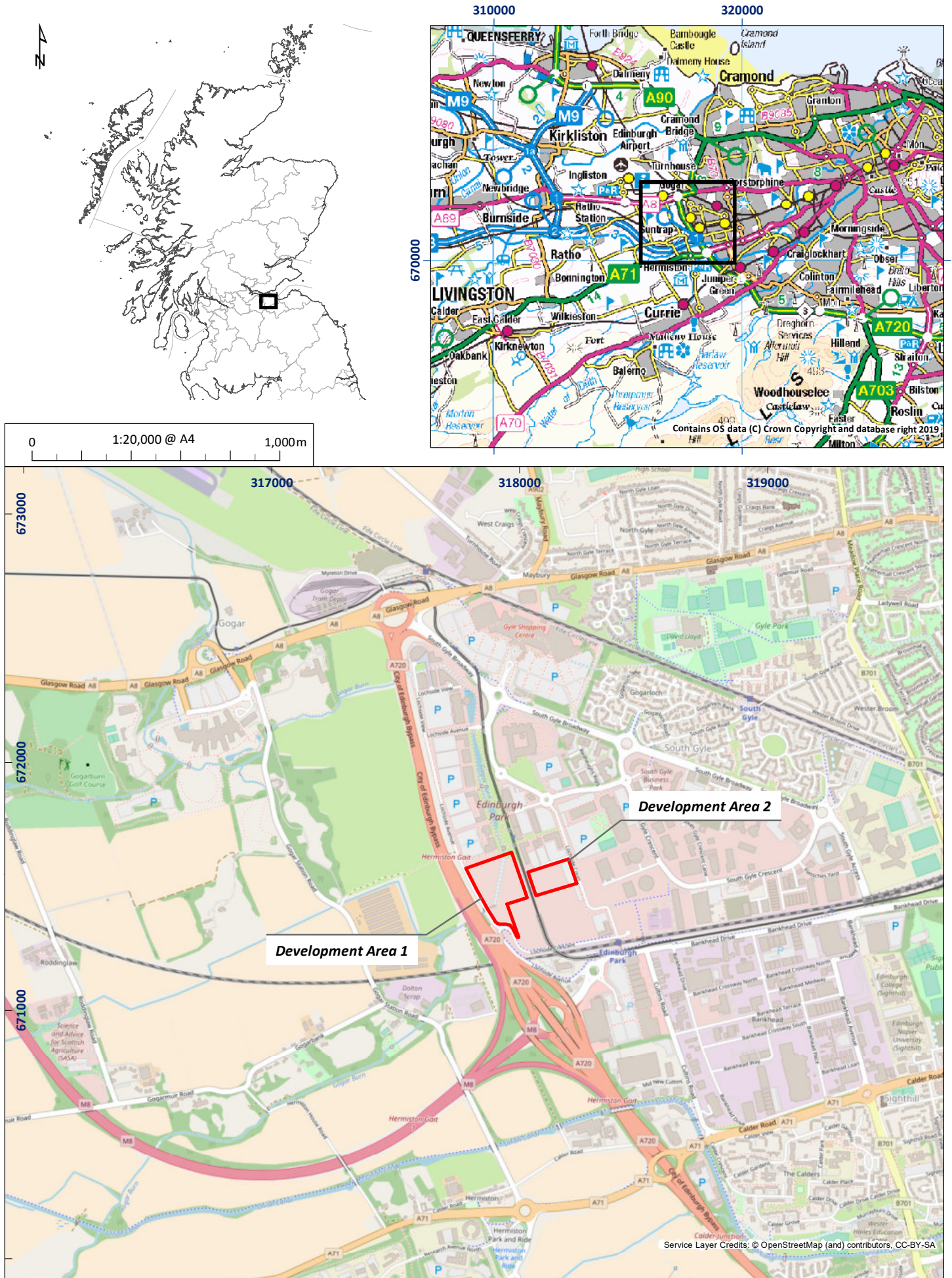


Figure 1: Site location plan

01/22954/DSR/01/01

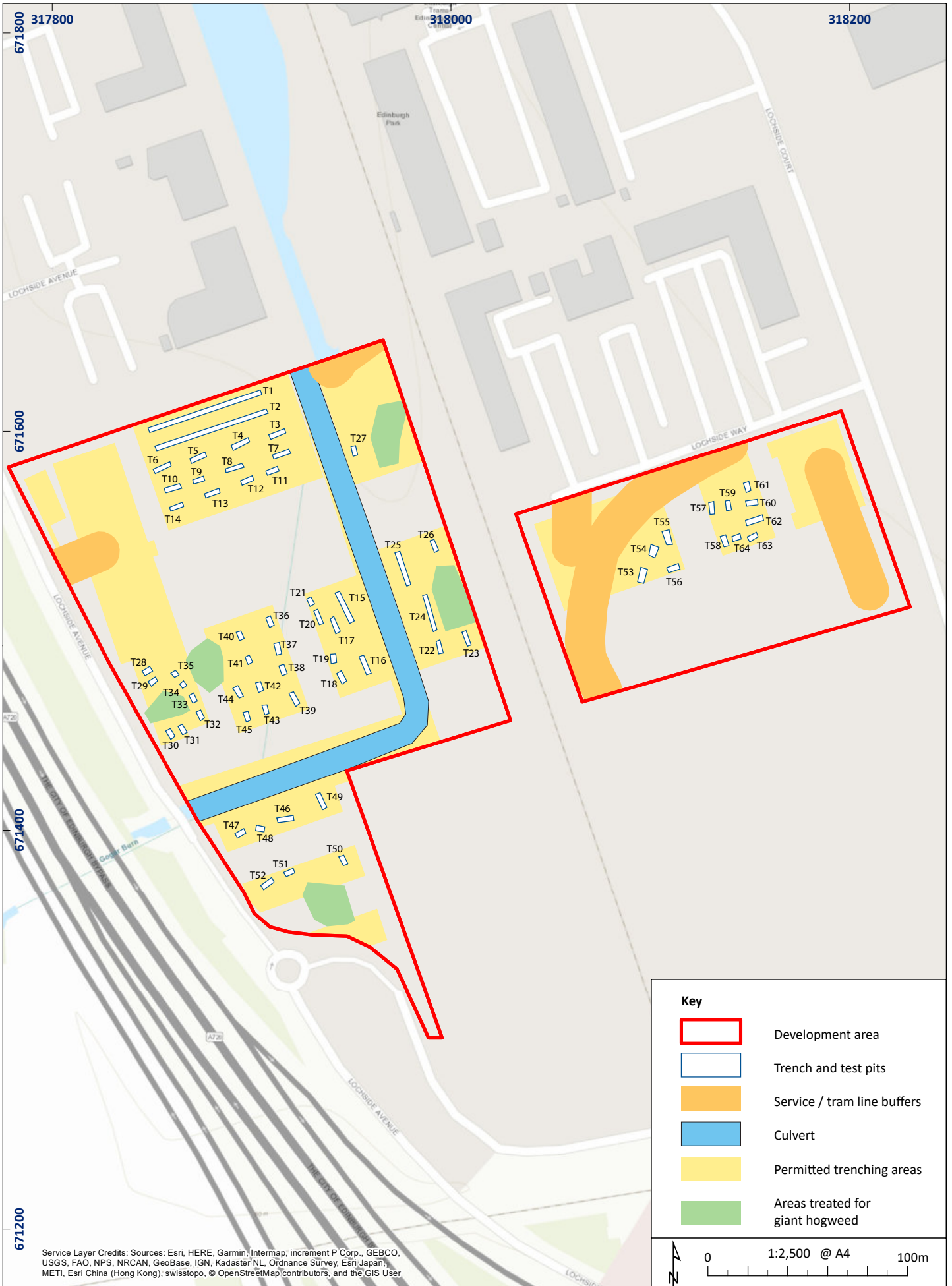


Figure 2: Excavation area showing trench and test pit locations

01/22954/DSR/02/01

**Edinburgh Park
Archaeological Evaluation Data Structure Report**

Appendices

APPENDIX 1: Trench Descriptions

Trench 1

<i>Dimensions</i>	<i>50m x 2.0m</i>
<i>Orientation</i>	<i>NE-SW</i>
<i>Depth of Topsoil</i>	<i>N/A</i>
<i>Depth of Excavation</i>	<i>1.62m to 2.5m</i>
<i>Significant Features</i>	<i>None</i>
<i>Other Features</i>	<i>None</i>
<i>Subsoil</i>	<i>Mid orange sandy clayey gravel</i>
<i>Finds</i>	<i>None</i>

Trench 2

<i>Dimensions</i>	<i>50m x 2.0m</i>
<i>Orientation</i>	<i>NE-SW</i>
<i>Depth of Topsoil</i>	<i>N/A</i>
<i>Depth of Excavation</i>	<i>1.57m to 2.9m</i>
<i>Significant Features</i>	<i>None</i>
<i>Other Features</i>	<i>None</i>
<i>Subsoil</i>	<i>Mid orange sandy clayey gravel</i>
<i>Finds</i>	<i>None</i>

Trench 3

<i>Dimensions</i>	<i>5m x 2.0m</i>
<i>Orientation</i>	<i>SW-NE</i>
<i>Depth of Topsoil</i>	<i>N/A</i>
<i>Depth of Excavation</i>	<i>3.2m</i>
<i>Significant Features</i>	<i>None</i>
<i>Other Features</i>	<i>None</i>
<i>Subsoil</i>	<i>Mid orange sandy clayey gravel</i>
<i>Finds</i>	<i>None</i>

Trench 4

<i>Dimensions</i>	<i>5m x 2.0m</i>
<i>Orientation</i>	<i>SW-NE</i>
<i>Depth of Topsoil</i>	<i>N/A</i>
<i>Depth of Excavation</i>	<i>2.5.0m</i>
<i>Significant Features</i>	<i>None</i>
<i>Other Features</i>	<i>None</i>
<i>Subsoil</i>	<i>Mid orange sandy clayey gravel</i>
<i>Finds</i>	<i>None</i>

Trench 5

<i>Dimensions</i>	<i>5m x 2.0m</i>
<i>Orientation</i>	<i>SW-NE</i>
<i>Depth of Topsoil</i>	<i>N/A</i>
<i>Depth of Excavation</i>	<i>1.5.0m</i>
<i>Significant Features</i>	<i>None</i>
<i>Other Features</i>	<i>None</i>
<i>Subsoil</i>	<i>Mid orange sandy clayey gravel</i>
<i>Finds</i>	<i>None</i>

Trench 6

<i>Dimensions</i>	<i>5m x 2.0m</i>
<i>Orientation</i>	<i>SW-NE</i>
<i>Depth of Topsoil</i>	<i>N/A</i>
<i>Depth of Excavation</i>	<i>0.8m</i>
<i>Significant Features</i>	<i>None</i>
<i>Other Features</i>	<i>None</i>
<i>Subsoil</i>	<i>Mid orange sandy clayey gravel</i>
<i>Finds</i>	<i>None</i>

Trench 7

<i>Dimensions</i>	<i>5m x 2.0m</i>
<i>Orientation</i>	<i>SW-NE</i>
<i>Depth of Topsoil</i>	<i>N/A</i>
<i>Depth of Excavation</i>	<i>3.8m</i>
<i>Significant Features</i>	<i>None</i>
<i>Other Features</i>	<i>None</i>
<i>Subsoil</i>	<i>Mid orange sandy clayey gravel</i>
<i>Finds</i>	<i>None</i>

Trench 8

<i>Dimensions</i>	<i>5m x 2.0m</i>
<i>Orientation</i>	<i>SW-NE</i>
<i>Depth of Topsoil</i>	<i>N/A</i>
<i>Depth of Excavation</i>	<i>2.7m</i>
<i>Significant Features</i>	<i>None</i>
<i>Other Features</i>	<i>None</i>
<i>Subsoil</i>	<i>Mid orange sandy clayey gravel</i>
<i>Finds</i>	<i>None</i>

Trench 9

<i>Dimensions</i>	<i>5m x 2.0m</i>
<i>Orientation</i>	<i>SW-NE</i>
<i>Depth of Topsoil</i>	<i>N/A</i>
<i>Depth of Excavation</i>	<i>1.5.0m</i>
<i>Significant Features</i>	<i>None</i>
<i>Other Features</i>	<i>None</i>
<i>Subsoil</i>	<i>Mid orange sandy clayey gravel</i>
<i>Finds</i>	<i>None</i>

Trench 10

<i>Dimensions</i>	<i>5m x 2.0m</i>
<i>Orientation</i>	<i>SW-NE</i>
<i>Depth of Topsoil</i>	<i>N/A</i>
<i>Depth of Excavation</i>	<i>1.1m</i>
<i>Significant Features</i>	<i>None</i>
<i>Other Features</i>	<i>None</i>
<i>Subsoil</i>	<i>Mid orange sandy clayey gravel</i>
<i>Finds</i>	<i>None</i>

Trench 11

<i>Dimensions</i>	<i>5m x 2.0m</i>
<i>Orientation</i>	<i>NE-SW</i>
<i>Depth of Topsoil</i>	<i>N/A</i>
<i>Depth of Excavation</i>	<i>4.1m</i>
<i>Significant Features</i>	<i>None</i>
<i>Other Features</i>	<i>None</i>
<i>Subsoil</i>	<i>Mid orange sandy clayey gravel</i>
<i>Finds</i>	<i>None</i>

Trench 12

<i>Dimensions</i>	<i>5m x 2.0m</i>
<i>Orientation</i>	<i>NE-SW</i>
<i>Depth of Topsoil</i>	<i>N/A</i>
<i>Depth of Excavation</i>	<i>3.6m</i>
<i>Significant Features</i>	<i>None</i>
<i>Other Features</i>	<i>None</i>
<i>Subsoil</i>	<i>Mid orange sandy clayey gravel</i>
<i>Finds</i>	<i>None</i>

Trench 13

<i>Dimensions</i>	<i>5m x 2.0m</i>
<i>Orientation</i>	<i>NE-SW</i>
<i>Depth of Topsoil</i>	<i>N/A</i>
<i>Depth of Excavation</i>	<i>1.6m</i>
<i>Significant Features</i>	<i>None</i>
<i>Other Features</i>	<i>None</i>
<i>Subsoil</i>	<i>Mid orange sandy clayey gravel</i>
<i>Finds</i>	<i>None</i>

Trench 14

<i>Dimensions</i>	<i>5m x 2.0m</i>
<i>Orientation</i>	<i>NE-SW</i>
<i>Depth of Topsoil</i>	<i>N/A</i>
<i>Depth of Excavation</i>	<i>1.2m</i>
<i>Significant Features</i>	<i>None</i>
<i>Other Features</i>	<i>None</i>
<i>Subsoil</i>	<i>Mid orange sandy clayey gravel</i>
<i>Finds</i>	<i>None</i>

Trench 15

<i>Dimensions</i>	<i>15m x 2.0m</i>
<i>Orientation</i>	<i>NW-SE</i>
<i>Depth of Topsoil</i>	<i>N/A</i>
<i>Depth of Excavation</i>	<i>3.4m</i>
<i>Significant Features</i>	<i>None</i>
<i>Other Features</i>	<i>None</i>
<i>Subsoil</i>	<i>Patchy orange clay</i>
<i>Finds</i>	<i>None</i>

Trench 16

<i>Dimensions</i>	<i>10m x 2.0m</i>
<i>Orientation</i>	<i>NW-SE</i>
<i>Depth of Topsoil</i>	<i>N/A</i>
<i>Depth of Excavation</i>	<i>3.2m</i>
<i>Significant Features</i>	<i>None</i>
<i>Other Features</i>	<i>None</i>
<i>Subsoil</i>	<i>Patchy orange clay</i>
<i>Finds</i>	<i>None</i>

Trench 17

<i>Dimensions</i>	<i>5m x 2.0m</i>
<i>Orientation</i>	<i>NW-SE</i>
<i>Depth of Topsoil</i>	<i>N/A</i>
<i>Depth of Excavation</i>	<i>2.6m</i>
<i>Significant Features</i>	<i>None</i>
<i>Other Features</i>	<i>None</i>
<i>Subsoil</i>	<i>Patchy orange clay</i>
<i>Finds</i>	<i>None</i>

Trench 18

<i>Dimensions</i>	<i>5.0m x 2.0m</i>
<i>Orientation</i>	<i>NW-SE</i>
<i>Depth of Topsoil</i>	<i>N/A</i>
<i>Depth of Excavation</i>	<i>2.5.0m</i>
<i>Significant Features</i>	<i>None</i>
<i>Other Features</i>	<i>None</i>
<i>Subsoil</i>	<i>Dark grey/patchy orange clay</i>
<i>Finds</i>	<i>None</i>

Trench 19

<i>Dimensions</i>	<i>5m x 2.0m</i>
<i>Orientation</i>	<i>NW-SE</i>
<i>Depth of Topsoil</i>	<i>N/A</i>
<i>Depth of Excavation</i>	<i>2.5m</i>
<i>Significant Features</i>	<i>None</i>
<i>Other Features</i>	<i>None</i>
<i>Subsoil</i>	<i>Dark grey/patchy orange clay</i>
<i>Finds</i>	<i>None</i>

Trench 20

<i>Dimensions</i>	<i>5.0m x 2.0m</i>
<i>Orientation</i>	<i>N-S</i>
<i>Depth of Topsoil</i>	<i>N/A</i>
<i>Depth of Excavation</i>	<i>2.5.0m</i>
<i>Significant Features</i>	<i>None</i>
<i>Other Features</i>	<i>None</i>
<i>Subsoil</i>	<i>Dark grey/patchy orange clay</i>
<i>Finds</i>	<i>None</i>

Trench 21

<i>Dimensions</i>	<i>5.0m x 2.0m</i>
<i>Orientation</i>	<i>NW-SE</i>
<i>Depth of Topsoil</i>	<i>N/A</i>
<i>Depth of Excavation</i>	<i>2.6m</i>
<i>Significant Features</i>	<i>None</i>
<i>Other Features</i>	<i>None</i>
<i>Subsoil</i>	<i>Dark grey/patchy orange clay</i>
<i>Finds</i>	<i>None</i>

Trench 22

<i>Dimensions</i>	<i>5.0m x 2.0m</i>
<i>Orientation</i>	<i>N-S</i>
<i>Depth of Topsoil</i>	<i>N/A</i>
<i>Depth of Excavation</i>	<i>2.5m</i>
<i>Significant Features</i>	<i>None</i>
<i>Other Features</i>	<i>None</i>
<i>Subsoil</i>	<i>Dark grey clay</i>
<i>Finds</i>	<i>None</i>

Trench 23

<i>Dimensions</i>	<i>5.0m x 2.0m</i>
<i>Orientation</i>	<i>N-S</i>
<i>Depth of Topsoil</i>	<i>N/A</i>
<i>Depth of Excavation</i>	<i>2.7m</i>
<i>Significant Features</i>	<i>None</i>
<i>Other Features</i>	<i>None</i>
<i>Subsoil</i>	<i>Dark grey clay</i>
<i>Finds</i>	<i>None</i>

Trench 24

<i>Dimensions</i>	<i>10m x 2.0m</i>
<i>Orientation</i>	<i>N-S</i>
<i>Depth of Topsoil</i>	<i>N/A</i>
<i>Depth of Excavation</i>	<i>0.7m</i>
<i>Significant Features</i>	<i>None</i>
<i>Other Features</i>	<i>None</i>
<i>Subsoil</i>	<i>Mid orange clay</i>
<i>Finds</i>	<i>None</i>

Trench 25

<i>Dimensions</i>	<i>10m x 2.0m</i>
<i>Orientation</i>	<i>N-S</i>
<i>Depth of Topsoil</i>	<i>None</i>
<i>Depth of Excavation</i>	<i>3.1m</i>
<i>Significant Features</i>	<i>None</i>
<i>Other Features</i>	<i>None</i>
<i>Subsoil</i>	<i>Mid orange clay</i>
<i>Finds</i>	<i>None</i>

Trench 26

<i>Dimensions</i>	<i>5.0m x 2.0m</i>
<i>Orientation</i>	<i>NW-SE</i>
<i>Depth of Topsoil</i>	<i>None</i>
<i>Depth of Excavation</i>	<i>2.9m</i>
<i>Significant Features</i>	<i>None</i>
<i>Other Features</i>	<i>None</i>
<i>Subsoil</i>	<i>Mid orange clay</i>
<i>Finds</i>	<i>None</i>

Trench 27

<i>Dimensions</i>	<i>5.0m x 2.0m</i>
<i>Orientation</i>	<i>N-S</i>
<i>Depth of Topsoil</i>	<i>N/A</i>
<i>Depth of Excavation</i>	<i>2.5.0m</i>
<i>Significant Features</i>	<i>None</i>
<i>Other Features</i>	<i>None</i>
<i>Subsoil</i>	<i>Mid orange/grey clay</i>
<i>Finds</i>	<i>None</i>

Trench 28

<i>Dimensions</i>	<i>5.0m x 2.0m</i>
<i>Orientation</i>	<i>NE-SW</i>
<i>Depth of Topsoil</i>	<i>N/A</i>
<i>Depth of Excavation</i>	<i>2.5m</i>
<i>Significant Features</i>	<i>None</i>
<i>Other Features</i>	<i>None</i>
<i>Subsoil</i>	<i>Mix of orange/grey clay</i>
<i>Finds</i>	<i>None</i>

Trench 29

<i>Dimensions</i>	<i>5.0m x 2.0m</i>
<i>Orientation</i>	<i>NE-SW</i>
<i>Depth of Topsoil</i>	<i>N/A</i>
<i>Depth of Excavation</i>	<i>2m</i>
<i>Significant Features</i>	<i>None</i>
<i>Other Features</i>	<i>None</i>
<i>Subsoil</i>	<i>Mix of orange/grey clay</i>
<i>Finds</i>	<i>None</i>

Trench 30

<i>Dimensions</i>	<i>5.0mx 2.0m</i>
<i>Orientation</i>	<i>N-S</i>
<i>Depth of Topsoil</i>	<i>N/A</i>
<i>Depth of Excavation</i>	<i>2.25m</i>
<i>Significant Features</i>	<i>None</i>
<i>Other Features</i>	<i>None</i>
<i>Subsoil</i>	<i>Mix of orange/grey clay</i>
<i>Finds</i>	<i>None</i>

Trench 31

<i>Dimensions</i>	<i>5.0m x 2.0m</i>
<i>Orientation</i>	<i>N-S</i>
<i>Depth of Topsoil</i>	<i>None</i>
<i>Depth of Excavation</i>	<i>2.10m</i>
<i>Significant Features</i>	<i>None</i>
<i>Other Features</i>	<i>None</i>
<i>Subsoil</i>	<i>Mix of orange/grey clay</i>
<i>Finds</i>	<i>None</i>

Trench 32

<i>Dimensions</i>	<i>5.0m x 2.0m</i>
<i>Orientation</i>	<i>N-S</i>
<i>Depth of Topsoil</i>	<i>N/A</i>
<i>Depth of Excavation</i>	<i>1.5m</i>
<i>Significant Features</i>	<i>None</i>
<i>Other Features</i>	<i>None</i>
<i>Subsoil</i>	<i>Mix of orange/grey clay</i>
<i>Finds</i>	<i>None</i>

Trench 33

<i>Dimensions</i>	<i>5.0m x 2.0m</i>
<i>Orientation</i>	<i>N-S</i>
<i>Depth of Topsoil</i>	<i>N/A</i>
<i>Depth of Excavation</i>	<i>2.2m</i>
<i>Significant Features</i>	<i>None</i>
<i>Other Features</i>	<i>None</i>
<i>Subsoil</i>	<i>Mix of orange/grey clay</i>
<i>Finds</i>	<i>None</i>

Trench 34

<i>Dimensions</i>	<i>5.0m x 2.0m</i>
<i>Orientation</i>	<i>NW-SE</i>
<i>Depth of Topsoil</i>	<i>N/A</i>
<i>Depth of Excavation</i>	<i>2.10m</i>
<i>Significant Features</i>	<i>None</i>
<i>Other Features</i>	<i>None</i>
<i>Subsoil</i>	<i>Mix of orange/grey clay</i>
<i>Finds</i>	<i>None</i>

Trench 35

<i>Dimensions</i>	<i>5.0m x 2.0m</i>
<i>Orientation</i>	<i>NW-SE</i>
<i>Depth of Topsoil</i>	<i>N/A</i>
<i>Depth of Excavation</i>	<i>2.0m</i>
<i>Significant Features</i>	<i>None</i>
<i>Other Features</i>	<i>None</i>
<i>Subsoil</i>	<i>Mix of orange/grey clay</i>
<i>Finds</i>	<i>None</i>

Trench 36

<i>Dimensions</i>	<i>5.0m x 2.0m</i>
<i>Orientation</i>	<i>N-S</i>
<i>Depth of Topsoil</i>	<i>N/A</i>
<i>Depth of Excavation</i>	<i>3.0m</i>
<i>Significant Features</i>	<i>None</i>
<i>Other Features</i>	<i>None</i>
<i>Subsoil</i>	<i>Mid orange silty clay</i>
<i>Finds</i>	<i>None</i>

Trench 37

<i>Dimensions</i>	<i>5.0m x 2.0m</i>
<i>Orientation</i>	<i>N-S</i>
<i>Depth of Topsoil</i>	<i>N/A</i>
<i>Depth of Excavation</i>	<i>3.9m</i>
<i>Significant Features</i>	<i>None</i>
<i>Other Features</i>	<i>None</i>
<i>Subsoil</i>	<i>Mid orange silty clay</i>
<i>Finds</i>	<i>None</i>

Trench 38

<i>Dimensions</i>	<i>5.0m x 2.0m</i>
<i>Orientation</i>	<i>N-S</i>
<i>Depth of Topsoil</i>	<i>N/A</i>
<i>Depth of Excavation</i>	<i>3.7m</i>
<i>Significant Features</i>	<i>None</i>
<i>Other Features</i>	<i>None</i>
<i>Subsoil</i>	<i>Mid orange silty clay</i>
<i>Finds</i>	<i>None</i>

Trench 39

<i>Dimensions</i>	<i>5.0m x 2.0m</i>
<i>Orientation</i>	<i>N-S</i>
<i>Depth of Topsoil</i>	<i>N/A</i>
<i>Depth of Excavation</i>	<i>3.4m</i>
<i>Significant Features</i>	<i>None</i>
<i>Other Features</i>	<i>None</i>
<i>Subsoil</i>	<i>Mid orange silty clay</i>
<i>Finds</i>	<i>None</i>

Trench 40

<i>Dimensions</i>	<i>5.0m x 2.0m</i>
<i>Orientation</i>	<i>N-S</i>
<i>Depth of Topsoil</i>	<i>N/A</i>
<i>Depth of Excavation</i>	<i>3.5.0m</i>
<i>Significant Features</i>	<i>None</i>
<i>Other Features</i>	<i>None</i>
<i>Subsoil</i>	<i>Mid orange silty clay</i>
<i>Finds</i>	<i>None</i>

Trench 41

<i>Dimensions</i>	5.0m x 1.5m
<i>Orientation</i>	N-S
<i>Depth of Topsoil</i>	N/A
<i>Depth of Excavation</i>	2.2m
<i>Significant Features</i>	None
<i>Other Features</i>	None
<i>Subsoil</i>	Mid orange silty clay
<i>Finds</i>	None

Trench 42

<i>Dimensions</i>	5.0m x 2.0m
<i>Orientation</i>	N-S
<i>Depth of Topsoil</i>	N/A
<i>Depth of Excavation</i>	2.7m
<i>Significant Features</i>	None
<i>Other Features</i>	None
<i>Subsoil</i>	Mid orange silty clay
<i>Finds</i>	None

Trench 43

<i>Dimensions</i>	5.0m x 2.0m
<i>Orientation</i>	N-S
<i>Depth of Topsoil</i>	N/A
<i>Depth of Excavation</i>	2.5m
<i>Significant Features</i>	None
<i>Other Features</i>	None
<i>Subsoil</i>	Mid orange silty clay
<i>Finds</i>	None

Trench 44

<i>Dimensions</i>	5.0m x 2.0m
<i>Orientation</i>	N-S
<i>Depth of Topsoil</i>	N/A
<i>Depth of Excavation</i>	2.10m
<i>Significant Features</i>	None
<i>Other Features</i>	None
<i>Subsoil</i>	Mid orange silty clay
<i>Finds</i>	None

Trench 45

<i>Dimensions</i>	5m x 2m
<i>Orientation</i>	N-S
<i>Depth of Topsoil</i>	N/A
<i>Depth of Excavation</i>	4m
<i>Significant Features</i>	None
<i>Other Features</i>	None
<i>Subsoil</i>	Mid orange clay
<i>Finds</i>	None

Trench 46

<i>Dimensions</i>	5 x 2m
<i>Orientation</i>	E-W
<i>Depth of Topsoil</i>	N/A
<i>Depth of Excavation</i>	3.5m
<i>Significant Features</i>	None
<i>Other Features</i>	None
<i>Subsoil</i>	Mid grey clay
<i>Finds</i>	None

Trench 47

<i>Dimensions</i>	5m x 2m
<i>Orientation</i>	ENE-WSW
<i>Depth of Topsoil</i>	N/A
<i>Depth of Excavation</i>	2.5.0m
<i>Significant Features</i>	None
<i>Other Features</i>	None
<i>Subsoil</i>	Mid grey clay
<i>Finds</i>	None

Trench 48

<i>Dimensions</i>	5m x 2m
<i>Orientation</i>	E-W
<i>Depth of Topsoil</i>	N/A
<i>Depth of Excavation</i>	0.8m
<i>Significant Features</i>	None
<i>Other Features</i>	None
<i>Subsoil</i>	Mid grey clay
<i>Finds</i>	None

Trench 49

<i>Dimensions</i>	5m x 2m
<i>Orientation</i>	N-S
<i>Depth of Topsoil</i>	N/A
<i>Depth of Excavation</i>	1.2m
<i>Significant Features</i>	None
<i>Other Features</i>	None
<i>Subsoil</i>	Mid grey clay
<i>Finds</i>	None

Trench 50

<i>Dimensions</i>	5m x 2m
<i>Orientation</i>	N-S
<i>Depth of Topsoil</i>	N/A
<i>Depth of Excavation</i>	2.5m
<i>Significant Features</i>	None
<i>Other Features</i>	None
<i>Subsoil</i>	Mid grey clay
<i>Finds</i>	None

Trench 51

<i>Dimensions</i>	<i>5m x 2m</i>
<i>Orientation</i>	<i>E-W</i>
<i>Depth of Topsoil</i>	<i>N/A</i>
<i>Depth of Excavation</i>	<i>1.1m</i>
<i>Significant Features</i>	<i>None</i>
<i>Other Features</i>	<i>None</i>
<i>Subsoil</i>	<i>Mid grey clay</i>
<i>Finds</i>	<i>None</i>

Trench 52

<i>Dimensions</i>	<i>5m x 2m</i>
<i>Orientation</i>	<i>ENE-WSW</i>
<i>Depth of Topsoil</i>	<i>N/A</i>
<i>Depth of Excavation</i>	<i>1.1m</i>
<i>Significant Features</i>	<i>None</i>
<i>Other Features</i>	<i>None</i>
<i>Subsoil</i>	<i>Mid grey clay</i>
<i>Finds</i>	<i>None</i>

Trench 53

<i>Dimensions</i>	<i>5m x 2m</i>
<i>Orientation</i>	<i>NE-SW</i>
<i>Depth of Topsoil</i>	<i>N/A</i>
<i>Depth of Excavation</i>	<i>2.1m</i>
<i>Significant Features</i>	<i>None</i>
<i>Other Features</i>	<i>None</i>
<i>Subsoil</i>	<i>Mix of light/mid yellow clay</i>
<i>Finds</i>	<i>None</i>

Trench 54

<i>Dimensions</i>	<i>5m x 2m</i>
<i>Orientation</i>	<i>NE-SW</i>
<i>Depth of Topsoil</i>	<i>N/A</i>
<i>Depth of Excavation</i>	<i>1.4m</i>
<i>Significant Features</i>	<i>None</i>
<i>Other Features</i>	<i>None</i>
<i>Subsoil</i>	<i>Mx of light/mid yellow clay</i>
<i>Finds</i>	<i>None</i>

Trench 55

<i>Dimensions</i>	<i>10m x 2m</i>
<i>Orientation</i>	<i>N-S</i>
<i>Depth of Topsoil</i>	<i>N/A</i>
<i>Depth of Excavation</i>	<i>1.4m</i>
<i>Significant Features</i>	<i>None</i>
<i>Other Features</i>	<i>None</i>
<i>Subsoil</i>	<i>Mid yellow clay</i>
<i>Finds</i>	<i>None</i>

Trench 56

<i>Dimensions</i>	<i>5m x 2.0m</i>
<i>Orientation</i>	<i>NE-SW</i>
<i>Depth of Topsoil</i>	<i>N/A</i>
<i>Depth of Excavation</i>	<i>1.2m</i>
<i>Significant Features</i>	<i>None</i>
<i>Other Features</i>	<i>None</i>
<i>Subsoil</i>	<i>Mix of mid yellow/mid grey clay</i>
<i>Finds</i>	<i>None</i>

Trench 57

<i>Dimensions</i>	<i>5m x 2m</i>
<i>Orientation</i>	<i>N-S</i>
<i>Depth of Topsoil</i>	<i>N/A</i>
<i>Depth of Excavation</i>	<i>2.0m</i>
<i>Significant Features</i>	<i>None</i>
<i>Other Features</i>	<i>None</i>
<i>Subsoil</i>	<i>Mid grey clay</i>
<i>Finds</i>	<i>None</i>

Trench 58

<i>Dimensions</i>	<i>5m x 2m</i>
<i>Orientation</i>	<i>N-S</i>
<i>Depth of Topsoil</i>	<i>N/A</i>
<i>Depth of Excavation</i>	<i>2.2m</i>
<i>Significant Features</i>	<i>None</i>
<i>Other Features</i>	<i>None</i>
<i>Subsoil</i>	<i>Mid grey clay</i>
<i>Finds</i>	<i>None</i>

Trench 59

<i>Dimensions</i>	<i>5m x 2m</i>
<i>Orientation</i>	<i>N-S</i>
<i>Depth of Topsoil</i>	<i>N/A</i>
<i>Depth of Excavation</i>	<i>2.0m</i>
<i>Significant Features</i>	<i>None</i>
<i>Other Features</i>	<i>None</i>
<i>Subsoil</i>	<i>Dark grey/patchy orange clay</i>
<i>Finds</i>	<i>None</i>

Trench 60

<i>Dimensions</i>	<i>5m x 2m</i>
<i>Orientation</i>	<i>ENE - WSW</i>
<i>Depth of Topsoil</i>	<i>None</i>
<i>Depth of Excavation</i>	<i>7.5m</i>
<i>Significant Features</i>	<i>None</i>
<i>Other Features</i>	<i>None</i>
<i>Subsoil</i>	<i>Mid grey clay</i>
<i>Finds</i>	<i>None</i>

Trench 61

<i>Dimensions</i>	<i>5m x 2.0m</i>
<i>Orientation</i>	<i>NNW-SSE</i>
<i>Depth of Topsoil</i>	<i>N/A</i>
<i>Depth of Excavation</i>	<i>1.6m</i>
<i>Significant Features</i>	<i>None</i>
<i>Other Features</i>	<i>None</i>
<i>Subsoil</i>	<i>Mid grey clay</i>
<i>Finds</i>	<i>None</i>

Trench 62

<i>Dimensions</i>	<i>5m x 2.0m</i>
<i>Orientation</i>	<i>E-W</i>
<i>Depth of Topsoil</i>	<i>N/A</i>
<i>Depth of Excavation</i>	<i>3.5m</i>
<i>Significant Features</i>	<i>None</i>
<i>Other Features</i>	<i>None</i>
<i>Subsoil</i>	<i>Mid grey clay</i>
<i>Finds</i>	<i>None</i>

Trench 63

<i>Dimensions</i>	<i>10m x 2.0m</i>
<i>Orientation</i>	<i>ENE - WSW</i>
<i>Depth of Topsoil</i>	<i>N/A</i>
<i>Depth of Excavation</i>	<i>0.7m</i>
<i>Significant Features</i>	<i>None</i>
<i>Other Features</i>	<i>None</i>
<i>Subsoil</i>	<i>Mix of grey and orange clay</i>
<i>Finds</i>	<i>None</i>

Trench 64

<i>Dimensions</i>	<i>5m x 2.0m</i>
<i>Orientation</i>	<i>NE-SW</i>
<i>Depth of Topsoil</i>	<i>N/A</i>
<i>Depth of Excavation</i>	<i>1.5m</i>
<i>Significant Features</i>	<i>None</i>
<i>Other Features</i>	<i>None</i>
<i>Subsoil</i>	<i>Mix of grey and orange clay</i>
<i>Finds</i>	<i>None</i>

APPENDIX 2: Photographic Record

Frame	Trench	Description	From
1	Tr 1	PX shot of Trench 1	SW
2	Tr 2	PX shot of Trench 2	SW
3-4	-	Record shots showing site security	-
5	Tr 3	PX shot of Trench 3	NE
6	Tr 3	N facing section of Trench 3	N
7	Tr 4	PX shot of Trench 4	NE
8	Tr 4	N facing section of Trench 4	N
9	Tr 5	PX shot of Trench 5	NE
10	Tr 6	PX shot of Trench 6	NE
11	Tr 10	PX shot of Trench	NE
12	Tr 10	N facing section of Trench 6	N
13	Tr 9	PX shot of Trench 9	SW
14	Tr 8	PX shot of Trench 8	SW
15	Tr 14	PX shot of Trench 14	SW
16	Tr 13	PX shot of Trench 13	SW
17	Tr 12	PX shot of Trench 12	SW
18	Tr 11	PX shot of Trench 11	SW
19	Tr 11	N facing section of Trench 11	N
20	Tr 7	PX shot of Trench 7	SW
21	Tr 7	N facing section of Trench 7	N
22	-	Working shot	-
23	Tr 21	PX shot of Trench 21	N
24	Tr 21	NE facing section of Trench 21	NW
25	Tr 20	PX shot of Trench 20	NE
26	Tr 20	NE facing section of Trench 20	NE
27	Tr 19	PX shot of Trench 19	N
28	Tr 19	East facing section of Trench 19	E
29	Tr 15	PX shot of Trench 15	NW
30	Tr 15	NE facing section of Trench 15	NE
31	Tr 18	PX shot of Trench 18	NW
32	Tr 18	NE facing section of Trench 18	NE
33	Tr 16	PX shot of Trench 16	NW
34	Tr 16	NE facing section of Trench 16	NE
35	Tr 22	PX shot of Trench 23	S
36	Tr 23	PX shot of Trench 23	S

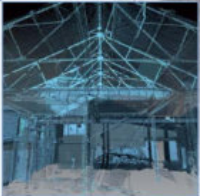
37	Tr 23	NW facing section of Trench 23	NW
38	Tr 26	PX shot of Trench 26	S
39	Tr 26	NW facing section of Trench 26	NW
40	Tr 22	NW facing section of Trench 22	NW
41	Tr 22	PX shot of Trench 22	N
42	Tr 22	PX shot of Trench 22	N
43	Tr 24	PX shot of Trench 27	N
44	Tr24	PX shot of Trench 24	N
45	Tr 24	NE facing section of Trench 24	NE
46	Tr 25	PX shot of Trench 25	NE
47	Tr 28	PX shot of Trench 28	E
48	Tr 28	N facing section of Trench 28	N
49	Tr 36	SW facing section of Trench 34	SW
50	Tr 36	PX shot of Trench 34	NW
51	Tr 37	SW facing section of Trench 37	SW
52	Tr 37	PX shot of Trench 37	NW
53	Tr 29	PX shot of Trench 29	NE
54	Tr 29	N facing section of Trench 29	N
55	Tr 38	SW facing section of Trench 38	SW
56	Tr 38	PX shot of Trench 38	NW
57	Tr 30	PX shot of Trench 30	NW
58	Tr 30	SW facing section of Trench 30	SW
59	Tr 31	PX shot of Trench 31	NW
60	Tr 31	SW section of Trench 31	SW
61	Tr 39	SW facing section of Trench 39	SW
62	Tr 39	PX shot of Trench 39	NW
63	Tr 32	PX shot of Trench 32	NW
64	Tr 32	SW facing section of Trench 32	SW
65	Tr 40	SW facing section of Trench 40	SW
66	Tr 40	PX shot of Trench 40	NW
67	Tr 41	NE facing section of Trench 41	NE
68	Tr 41	PX shot of Trench 41	NW
69	Tr 33	PX shot of Trench 33	NW
70	Tr 33	NW facing section of Trench 33	NW
71	Tr 34	PX shot of Trench 34	NW
72	Tr 34	NE facing section of Trench 34	NE
73	Tr 42	NE facing section of Trench 42	NE

74	Tr 42	PX shot of Trench 42	NW
75	Tr 43	NE facing section of Trench 43	NE
76	Tr 43	PX shot of Trench 43	NW
77	Tr 44	SW facing section of Trench 44	SW
78	Tr 44	PX shot of Trench 44	NW
79	Tr 46	PX shot of Trench 46	E
80	Tr 46	N facing section of Trench 46	N
81	Tr 45	SW facing section of Trench 45	SW
82	Tr 45	PX shot of Trench 45	NW
83	Tr 47	PX shot of Trench 47	SW
84	Tr 47	NW facing section of Trench 47	NW
85	Tr 48	PX shot of Trench 48	SW
86	Tr 48	NE facing section of Trench 48	NE
87	Tr 50	PX shot of trench 50	SW
88	Tr 50	W facing section of Trench 50	S
89	Tr 49	PX shot of Trench 49	SW
90	Tr 49	NE facing section of Trench 49	NE
91	Tr 51	PX shot of trench 51	NE
92	Tr 51	NW facing section of Trench 51	N
93	Tr 52	PX shot of Trench 52	NE
94	Tr 52	NW facing section of Trench 52	NW
95	Tr 65	PX shot of Trench 65	SE
96	Tr 65	NE facing section of Trench 65	NE
97	Tr 53	PX shot of Trench 53	SW
98	-	VOID	-
99	Tr 53	E facing section of Trench 53	E
100	Tr 57	PX shot of Trench 57	S
101	Tr 57	W facing section of Trench 57	SW
102	Tr 54	PX shot of Trench 54	SW
103	Tr 54	SE facing section of Trench 54	SE
104	Tr 58	PX shot of Trench 58	SE
105	Tr 58	SW facing section of Trench 58	SW
106	Tr 55	PX shot of Trench 55	SW
107	Tr 55	E facing section of Trench 55	E
108	Tr 55	E facing section of Trench 55	E
109	Tr 59	PX shot of Trench 59	S
110	Tr 59	E facing section of Trench 59	E

111	Tr 59	E facing section of trench 59	E
112	Tr 64	PX shot of Trench 64	NE
113	Tr 64	NW facing section of Trench 64	NW
114	Tr 56	PX shot of Trench 56	NE
115	Tr 56	NW facing section of Trench 56	NW
116	Tr 61	PX shot of Trench 61	SE
117	Tr 61	NE facing section of Trench 61	NE
118	Tr 60	N facing section of Trench 60	N
119	Tr 60	PX shot of Trench 60	E
120	Tr 64	PX shot of Trench 64	NE
121	Tr 64	SE facing section of Trench 64	SE
122	Tr 62	PX shot of Trench 62	NE
123	Tr 62	SE facing section of Trench 62	SE
124-129	-	General shots showing backfilled Trenches	-

APPENDIX 3: 'Discovery and Excavation in Scotland' Report

LOCAL AUTHORITY:	City of Edinburgh Council
PROJECT TITLE/SITE NAME	Edinburgh Park Archaeological Evaluation: Data Structure Report
PROJECT CODE:	AOC 22954
PARISH:	Edinburgh
NAME OF CONTRIBUTOR:	Stuart Wilson
NAME OF ORGANISATION:	AOC Archaeology Group
TYPE(S) OF PROJECT:	Archaeological Evaluation
NMRS NO(S)	None
SITE/MONUMENT TYPE(S):	None
SIGNIFICANT FINDS:	None
NGR	NT 17886 71550 & NT 18115 71548 (centred)
START DATE	21/01/2019
END DATE	25/01/19
PREVIOUS WORK	None
MAIN (NARRATIVE) DESCRIPTION:	<p><i>This report presents the results of an archaeological evaluation undertaken by AOC Archaeology Group on behalf of Parabola Edinburgh Ltd, on a land plot located at Edinburgh Park.</i></p> <p><i>The site comprised a brownfield site divided into two areas measuring 6ha and 1.6ha. The development area was known for substantial deposits of made ground. Excavations were only permitted in certain areas as agreed in the WSI</i></p> <p><i>The evaluation consisted of a combination of test pits and late test pits due to the depth of the made ground being unstable. A single area to the north east of site was not investigated as it was frequently in use by members of the public.</i></p> <p><i>The evaluation revealed extensive deposits of made ground directly overlying a mixed clay subsoil which demonstrated varying degrees of disturbance.</i></p> <p><i>No significant archaeological features or artefacts were recovered during the evaluation.</i></p>
PROPOSED FUTURE WORK:	None
CAPTION(S) FOR ILLUSTRS:	None
SPONSOR OR FUNDING BODY:	Parabola Edinburgh Ltd
ADDRESS OF MAIN CONTRIBUTOR:	AOC Archaeology Group
EMAIL ADDRESS:	stuart.wilson@aocarchaeology.com
ARCHIVE LOCATION	NMRS



AOC Archaeology Group, Edgefield Industrial Estate, Edgefield Road, Loanhead EH20 9SY
tel: 0131 440 3593 | fax: 0131 440 3422 | e-mail: admin@aocarchoeology.com

www.aocarchoeology.com