



## 29-33 (Odd Nos) Hanover Street, Edinburgh: Archaeological Recording Programme

### Data Structure Report

---

<b>On Behalf of:</b>	<b>Clancy Docwra Ltd</b> Caledonia House/Unit 16 Shairps Business Park Houstoun Rd, Livingston EH54 5FD
<b>National Grid Reference (NGR):</b>	<b>NT 25376 73949</b>
<b>AOC Project No:</b>	<b>24749</b>
<b>Oasis No.</b>	<b>1-343374</b>
<b>Prepared by:</b>	<b>Victoria Huggett</b>
<b>Date of Fieldwork:</b>	<b>19<sup>th</sup> February 2019</b>
<b>Date of Report:</b>	<b>20<sup>th</sup> February 2019</b>

This document has been prepared in accordance with AOC standard operating procedures.

**Author:** Victoria Huggett

**Date:** 21<sup>st</sup> February 2019

**Approved by:** Rob Engl

**Date:** 21<sup>st</sup> February 2019

**Draft Report Stage:** Draft

**Date:** 21<sup>st</sup> February 2019

**Enquiries to:** AOC Archaeology Group  
Edgefield Industrial Estate  
Edgefield Road  
Loanhead  
EH20 9SY

Tel. 0131 440 3593  
Fax. 0131 440 3422  
e-mail. [admin@aocarchaeology.com](mailto:admin@aocarchaeology.com)

## Contents

	<b>Page</b>
List of illustrations .....	4
List of plates .....	4
List of appendices .....	4
Summary .....	5
1 INTRODUCTION .....	6
3 METHODOLOGY .....	8
4 RESULTS .....	8
5 CONCLUSION .....	11
6 RECOMMENDATIONS .....	11
7 REFERENCES .....	11
APPENDIX 1: PHOTOGRAPHIC REGISTER.....	13
APPENDIX 2: 'DISCOVERY AND EXCAVATION IN SCOTLAND' (DES) REPORT .....	14

## List of illustrations

Figure 1: Site Location

Figure 2: Extract from the Roy Map, Lowlands 1752-1755

Figure 3: Extract from Kincaid 1784

Figure 4: OS Six Inch, 1843-1882

## List of plates

Plate 1: Exposed cellar

Plate 2: Interior of northern cellar showing probable door lintel

Plate 3: Exposed cellar showing brick barrel roof and infill

## List of appendices

Appendix 1 Photographic Register

Appendix 2 Discovery and Excavation in Scotland Entry

## Summary

---

AOC Archaeology Group was commissioned by Clancy Docwra Ltd to record features uncovered during groundbreaking works associated with utility works on Hanover Street, Edinburgh.

The features lay in front of 29-33 (Odd Nos) Hanover Street, a Category B listed building dating to 1881. The uncovered features appear to be the remains of earlier 18<sup>th</sup> century cellarage associated with earlier construction on this site.

## 1 INTRODUCTION

### 1.1 Project Background

1.1.1 A programme of archaeological works was required by Clancy Docwra Ltd. The archaeological works consisted of a recording programme on cellarage uncovered during utility works. The need for, and scope of, the archaeological works has been determined by City of Edinburgh Council (CEC) who are advised on archaeological matters by the City of Edinburgh Council Archaeology Service (CECAS).

1.1.2 The programme of archaeological works is in keeping with the policies outlined in *Scottish Planning Policy* (2014) and *PAN 2/2011 Planning and Archaeology* (2011) in order to record the extent and significance of any archaeological remains which may be present within the development area and was further detailed in the *Written Scheme of Investigation* (2019).

### 1.2 Site location

1.2.1 The works area lies in front of the entrances to Category B listed 29-33 (Odd Nos) Hanover Street, under a concrete slabbed pavement. The site location is shown on Figure 1 and is centred on NGR NT 25376 73949.

### 1.3 Archaeological background

1.3.1 Early cartographic sources show that the site was previously open agricultural land as late as the mid 18<sup>th</sup> century prior to the creation of Edinburgh's New Town (Roy 1752-55) (Figure 2).

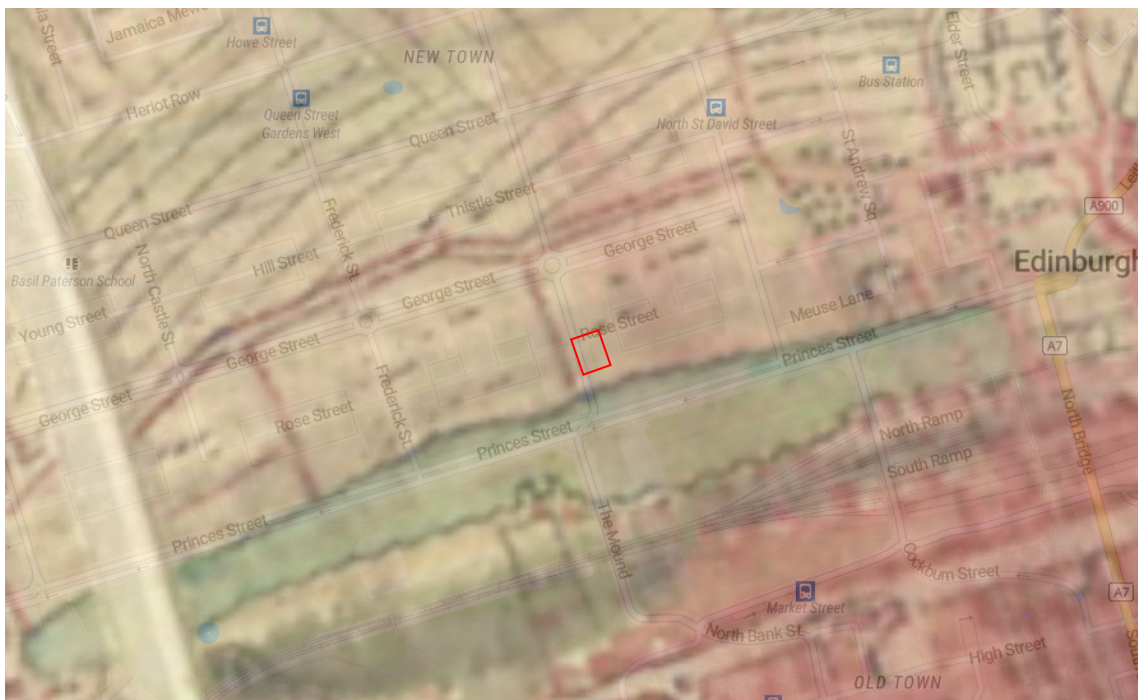


Figure 2: Extract from the Roy Map, Lowlands 1752-1755

1.3.2 The creation of Hanover Street and George Street commenced in 1767 with the revision of James Craig's plan. Craig's plan proposed that a new street, George Street (named after George III) should be built along the ridge to the north of the Nor' Loch. George Street was to be the grandest and widest street in the New Town, 115 ft broad, linking two new squares, St Andrew Square and St

George Square. It was subsequently decided that St George Square should be named Charlotte Square after Queen Charlotte, wife of George III.

- 1.3.3 The other main streets in Craig's Plan were Queen Street and Princes Street flanking George Street on the north and south, and Castle Street, Frederick Street and Hanover Street forming a grid.



Figure 3: Extract from Kincaid 1784



Figure 4: OS Six Inch, 1843-1882

## 2 OBJECTIVES

2.1 The objectives of the archaeological works were:

- i) to record the archaeological resource revealed by groundworks associated with utility works undertaken at 29-33 Hanover Street, Edinburgh;
- ii) to report on the results of the site visit.

## 3 METHODOLOGY

3.1 After consultation with Mr John Lawson (CECAS) and the client it was agreed that the visiting archaeologist was to record the archaeological features exposed during utility works. The recording programme was undertaken according to AOC Archaeology Group's standard operating procedures as detailed with the *Written Scheme of Investigation* (AOC 2017).

## 4 RESULTS

4.1 The various detailed data gathered from the recording programme is presented as a series of appendices:

- Appendix 1 Photographic Register;
- Appendix 2 Discovery and Excavation in Scotland Entry

4.2 The recording programme was conducted on the 19<sup>th</sup> of February in overcast conditions with archaeological visibility remaining favourable.

4.3 The recording programme revealed the partially exposed remains of several brick built barrel vaulted cellars built on sandstone foundations. The cellars had a visible extent of 3.2m by 4.2m. No depth could be ascertained as the cellars were infilled with rubble and topsoil.

4.4 The cellar at the northern end of the exposure appeared to be half vaulted with its arch supported against the roof of the next cellar.

4.5 The eastern wall of the northern cellar appeared to have the remains of a stone lintel possibly for a cellar door.

4.4 It is likely that the cellars are related to the late 18<sup>th</sup> century building shown on the Kincaid map of 1784 (Figure 3) this predates the existing building which was constructed in 1881 by John Watherston and Sons. No further finds or features were encountered.





Plate 1 Exposed cellar



Plate 2 Interior of northern cellar showing probable door lintel



Plate 3 exposed cellar showing brick barrel roof and infill

## **5 CONCLUSION**

- 5.1 The archaeological recording programme undertaken at 29-33 Hanover Street revealed the remains of barrel vaulted cellars probably dating to the late 18<sup>th</sup> century. These had been infilled with rubble and demolition deposits. No small finds were recovered during the recording.

## **6 RECOMMENDATIONS**

- 6.1 No further archaeological works are considered necessary. This recommendation will require confirmation by CECAS.

## **7 REFERENCES**

Scottish Government 2014 *Scottish Planning Policy*, April 2014.

Scottish Government 2011 PAN 42 Planning And Archaeology 2/2011.

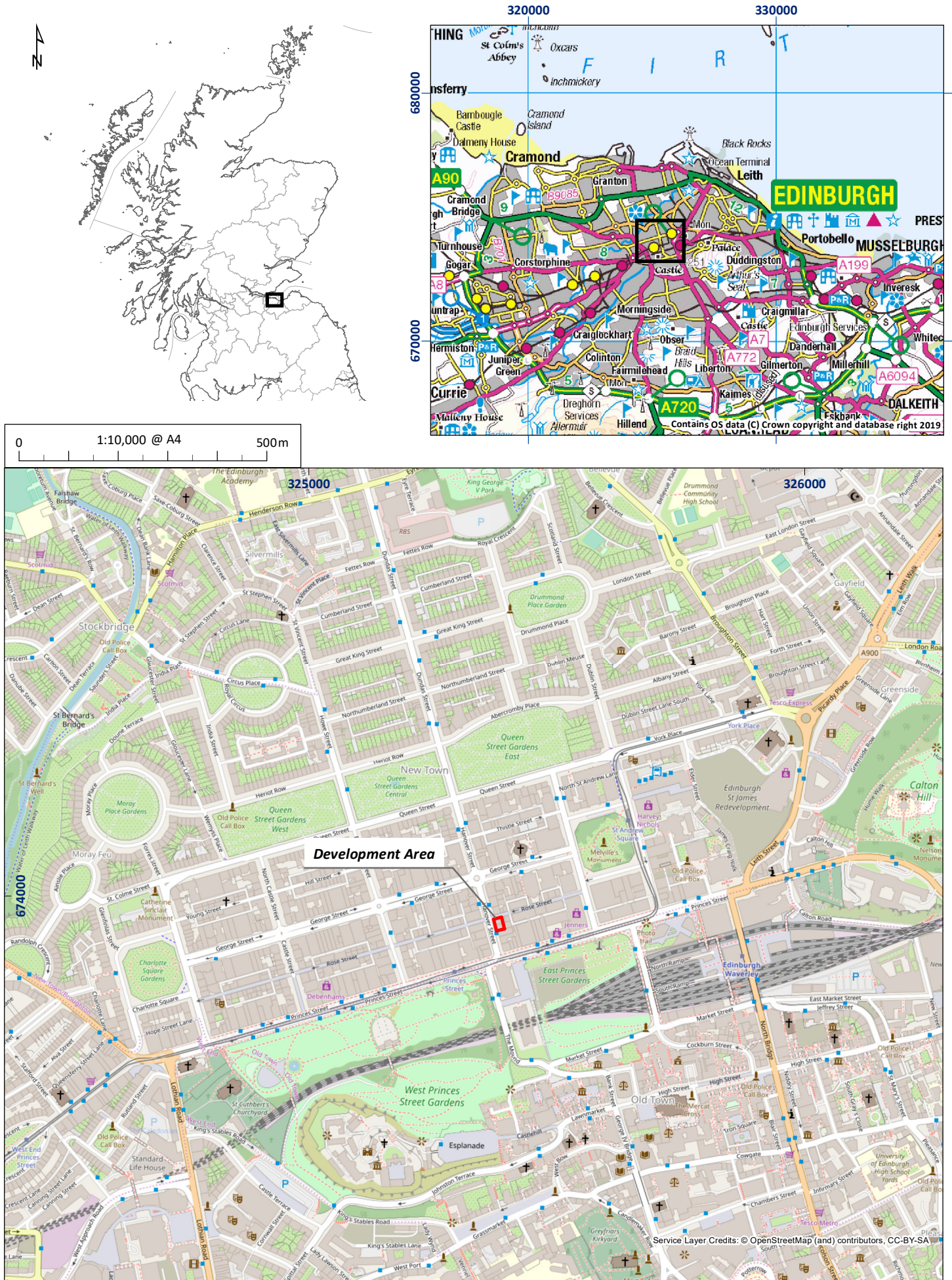


Figure 1: Site location plan

01/24749/DSR/01/02

# **29-33 Hanover Street, Edinburgh: Archaeological Recording Programme Data Structure Report**

## **Section 2: Appendices**

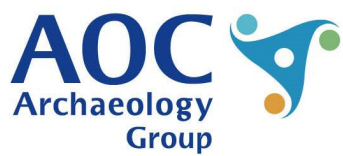
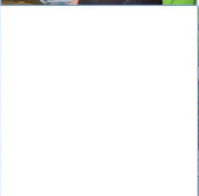
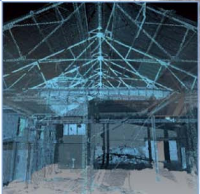
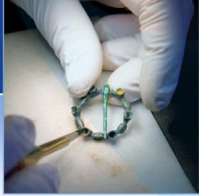
## APPENDIX 1: PHOTOGRAPHIC REGISTER

### Digital

Frame	Description	From
1	General view of site	W
2	General view of site	N
3	General view of site	NW
4	General view of site	S
5	General view of site	E
6	Broken portion of cellar roof	W
7	Broken portion of cellar roof	W
8	Broken portion of cellar roof	N
9	Broken portion of cellar roof	E
10	Broken portion of cellar roof - no scale	S
11	Visible brick at W end of N cellar (broken cellar)	W
12	Visible brick at W end of possible 2nd/3rd cellar	W
13	General over visible cellar ends	SW
14	W. end of possible 2nd/3rd cellar	W
15	Visible stone related to cellar (s)	W
16	View S across cellar ends (portrait)	N
17	Attempted photograph of inside	W
18	General over cellar	W
19	General over cellar	W
20	General over S. end of cellars	W
21	Visible brick at W. end of possible 2nd/3rd cellar (S. cellar)	W
22	Visible brick at W. end of broken cellar (N. cellar)	W
23	Visible brick at W. end of broken cellar (N. cellar)	W
24	Visible brick at W. end of broken cellar (N. cellar)	W

**APPENDIX 2: 'DISCOVERY AND EXCAVATION IN SCOTLAND' (DES) REPORT**

<b>LOCAL AUTHORITY:</b>	City of Edinburgh Council
<b>PROJECT TITLE/SITE NAME:</b>	29-33 Hanover Street, Edinburgh
<b>PROJECT CODE:</b>	24749
<b>PARISH:</b>	Edinburgh
<b>NAME OF CONTRIBUTOR:</b>	Victoria Huggett
<b>NAME OF ORGANISATION:</b>	AOC Archaeology Group
<b>TYPE(S) OF PROJECT:</b>	Archaeological Recording Programme
<b>NMRS NO(S):</b>	N/A
<b>SITE/MONUMENT TYPE(S):</b>	Category B listed
<b>SIGNIFICANT FINDS:</b>	N/A
<b>NGR (2 letters, 6 figures)</b>	NT 25376 73949
<b>START DATE (this season)</b>	14 <sup>th</sup> February 2019
<b>END DATE (this season)</b>	14 <sup>th</sup> February 2019
<b>PREVIOUS WORK (incl. DES ref.)</b>	N/A
<b>MAIN (NARRATIVE) DESCRIPTION: (May include information from other fields)</b>	<p>AOC Archaeology Group was commissioned by Clancy Docwra Ltd to record features uncovered during groundbreaking works associated with utility works on Hanover Street, Edinburgh.</p> <p>The features lay in front of 29-33 (Odd Nos) Hanover Street, a Category B listed building dating to 1881. The uncovered features appear to be the remains of earlier 18<sup>th</sup> century cellarage associated with earlier construction on this site.</p>
<b>PROPOSED FUTURE WORK:</b>	None
<b>CAPTION(S) FOR ILLUSTRS:</b>	N/A
<b>SPONSOR OR FUNDING BODY:</b>	Clancy Docwra Ltd
<b>ADDRESS OF MAIN CONTRIBUTOR:</b>	AOC Archaeology Group; Edgefield Road Industrial Estate; Loanhead. Midlothian, EH20 9SY
<b>EMAIL ADDRESS:</b>	admin@aocarchaeology.com
<b>ARCHIVE LOCATION</b>	Archive to be deposited in NMRS



AOC Archaeology Group, Edgefield Industrial Estate, Edgefield Road, Loanhead EH20 9SY  
tel: 0131 440 3593 | fax: 0131 440 3422 | e-mail: [edinburgh@aacarchaeology.com](mailto:edinburgh@aacarchaeology.com)

[www.aocarchaeology.com](http://www.aocarchaeology.com)