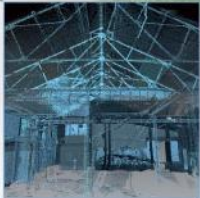


# A9 Dualling Tay Crossing to Ballinluig, Supplementary Ground Investigation Archaeological Watching Brief Data Structure Report

AOC 70386

June 2019



**AOC**  
Archaeology  
Group



ARCHAEOLOGY

HERITAGE

CONSERVATION

# A9 Dualling Tay Crossing to Ballinluig, Supplementary Ground Investigation

## Archaeological Watching Brief Data Structure Report

On Behalf of:	Transport Scotland (undertaken on behalf of Soil Engineering Geoservices Limited)
National Grid Reference (NGR):	OS NGR 295659E 756396N to 273172E 770324N
AOC Project No:	70386
Prepared by:	L. Teufel
Illustrations by:	S. Williamson
Date of Fieldwork:	7 <sup>th</sup> March to 26 <sup>th</sup> April 2019
Date of Report:	24 <sup>th</sup> June 2019
OASIS No.:	aocarcha1-348641

This document has been prepared in accordance with AOC standard operating procedures.

Authors: L. Teufel	Date: 24 <sup>th</sup> June 2019
Approved by: C. MacIver	Date: 24 <sup>th</sup> June 2019
Report Stage: Final	Date: 24 <sup>th</sup> June 2019

**Enquiries to:** AOC Archaeology Group  
The Old Estate Office  
Rosehaugh Estate  
Avoch  
IV9 8RF

**Mob.** 07972 259255  
**Tel.** 01463 819841  
**E-mail** [inverness@aocarchaeology.com](mailto:inverness@aocarchaeology.com)



## Contents

	<b>Page</b>
<b>List of Figures</b> .....	4
<b>List of Plates</b> .....	4
<b>List of Appendices</b> .....	4
<b>Abstract</b> .....	5
<b>1.0 Introduction</b> .....	6
<b>2.0 Project Background</b> .....	6
<b>3.0 Objectives</b> .....	8
<b>4.0 Methodology</b> .....	8
<b>5.0 Results</b> .....	9
<b>6.0 Conclusions and Recommendations</b> .....	11
<b>7.0 References</b> .....	11

### List of Figures

Figure 1: Site Location Map

### List of Plates

Plate 1: A typical trial pit (TBT4049)  
Plate 2: A typical trial pit (TBT4028)  
Plate 3: A typical trial pit (TBT4036)  
Plate 4: A typical soil profile (TBT4049)  
Plate 5: A typical soil profile (TBT4030)  
Plate 6: A typical soil profile (TBT4036)

### List of Appendices

Appendix 1 List of Monitored Trial Pits  
Appendix 2 List of Site Photographs  
Appendix 3 List of Borehole Access Advised On  
Appendix 4 List of Drawings  
Appendix 5 Plates (separate pdf)

## **Abstract**

---

This report details the findings of an archaeological watching brief for the A9 Dualling Tay Crossing to Ballinluig Supplementary Ground Investigation.

A total of 25 trial pits were excavated during the duration of the works and access for 20 boreholes was advised on in advance of works. All of these were monitored by an Archaeological Clerk of Works, as required by Transport Scotland.

Fieldwork was carried out between 5<sup>th</sup> March - 26<sup>th</sup> April 2019. No archaeological remains were uncovered or impacted upon during the works.

---

## 1.0 Introduction

- 1.1 A programme of archaeological monitoring was undertaken on behalf of Soil Engineering Geoservices Limited for Transport Scotland as part of the A9 Dualling Tay Crossing to Ballinluig, Supplementary Ground Investigation, as per the *Environmental Report* ([Jacobs and Transport Scotland 2019](#)). The requirement arose as the corridor in which the Ground Investigation works were to be carried out is known to be rich in archaeological and historical remains, and thus there was high potential for the survival of buried archaeological deposits.
- 1.2 The site lies within the administrative area of Perth and Kinross Heritage Trust ([2019](#)). The requirement of the archaeological watching brief was specified in keeping with the policies outlined in *Scottish Planning Policy* ([2014](#)) and *Planning Advice Note (PAN) 2/2011 Planning and Archaeology* ([2011](#)) in order to record the extent and significance of any archaeological remains which may be present within the development area.
- 1.3 The archaeological monitoring was carried out between 5<sup>th</sup> March 2019 and 26<sup>th</sup> April 2019. A total of 25 trial pits (referred to through the text by a unique identifying number preceded by the initialism TBT – Tay Ballinluig Trial pit) were excavated. The trial pit positions were excavated by Soil Engineering Geoservices Limited (henceforth referred to as Soil Engineering), all of which were excavated under archaeological supervision. Access for 20 boreholes was advised on in advance of works, 3 additional boreholes (TBB4002, TBB4029 and TBB4034) were also undertaken but did not have a cultural heritage mitigation requirement. No archaeological remains or artefacts were uncovered, and no cultural heritage assets were impacted upon by the works.

## 2.0 Project Background

- 2.1 The development area is located within a corridor either side of the A9 road between the Tay Crossing and Ballinluig, from Chainage 22 300 to 30 700, a distance of 8.4km (**Figure 1**). This phase of work was supplementary to a Detailed Ground Investigation carried out in 2018.
- 2.2 The proposed development is located in an area where significant archaeological sites are known to exist. A comprehensive desk-based assessment was carried out in advance of the works by Jacobs as part of the *Environmental Statement* ([Jacobs and Transport Scotland 2018](#)), a summary of which follows.
- 2.3 Ninety-three cultural heritage assets were identified as part of the desk-based assessment, comprising 47 archaeological remains, 39 historic buildings, and 7 historic landscape types. One Scheduled Monument, Clachan More Standing Stones (SM1514: TBB4012 located nearby) was noted within 50m of the Supplementary Ground Investigation work ([Jacobs and Transport Scotland 2019](#)).

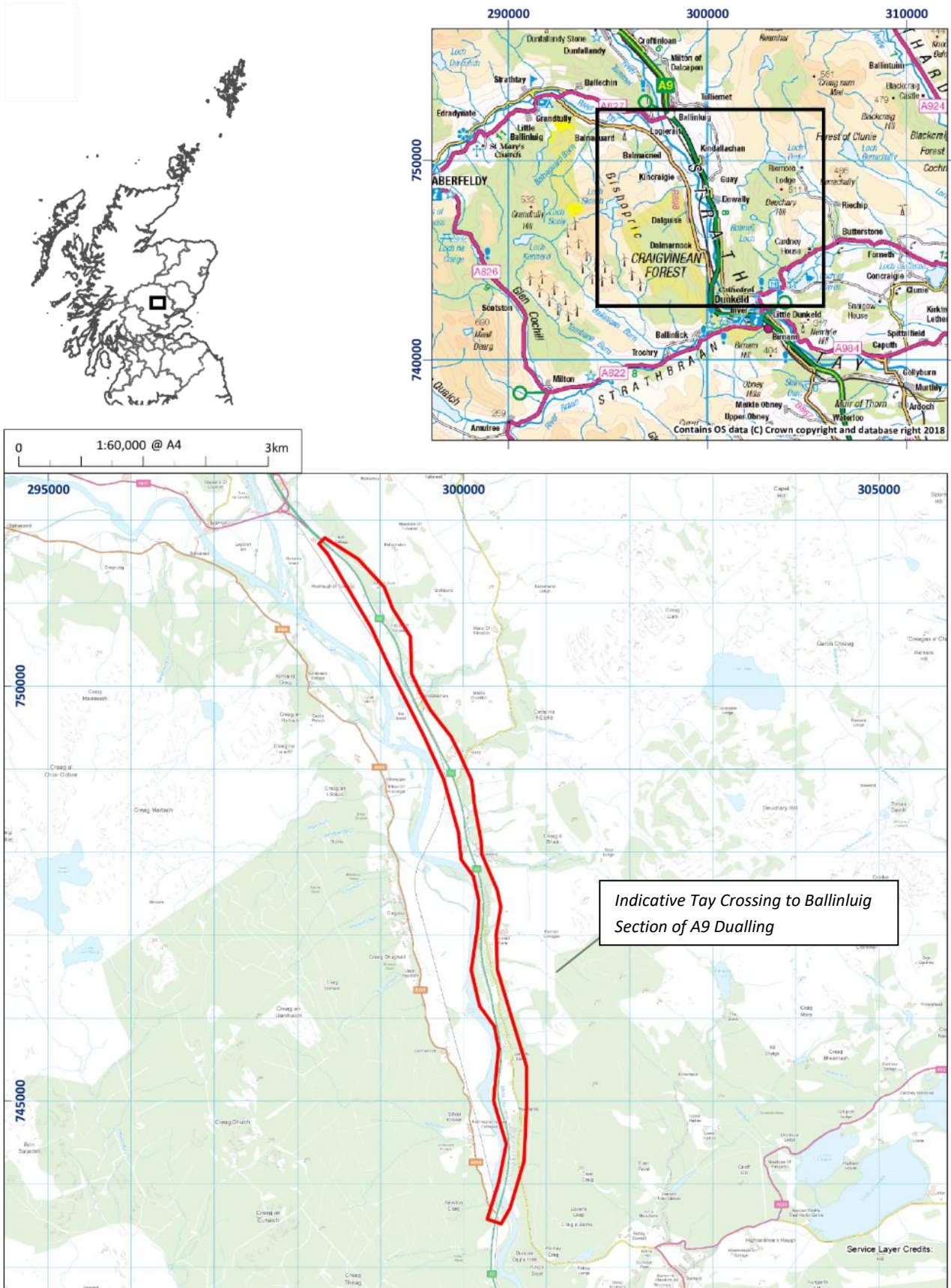


Figure 1: Site Location Map

### 3.0 Objectives

- 3.1 The Chartered Institute for Archaeologists (CIfA) defines an archaeological watching brief as 'a formal programme of observation and investigation conducted during any operation carried out for non-archaeological reasons... where there is a possibility that archaeological deposits may be disturbed or destroyed. The programme will result in the preparation of a report and ordered archive' ([CIfA 2014a](#)).
- 3.2 The aims of the archaeological works were:
- i. To undertake an archaeological watching brief during ground investigation works to evaluate the underlying deposits for the presence/absence of any archaeological remains.
  - ii. To undertake an appropriate level of recording of any significant archaeological remains encountered in order to determine the character, extent and significance of any archaeological deposits uncovered.
  - iii. To mitigate any adverse impacts arising from the ground investigation activities.

### 4.0 Methodology

- 4.1 The methodology expressed below is in keeping with the methodology set out in the *Written Scheme of Investigation* ([Williamson & MacIver 2019](#)). All work was carried out in accordance with *Archaeological Planning Advice* ([Perth and Kinross Council 2019](#)), *Scottish Planning Policy* ([2014](#)) and *PAN 2/2011 Planning and Archaeology* ([2011](#)).
- 4.2 Access surveys were undertaken in advance of mobilisation of plant and personnel for 20 borehole locations identified at the start of the project to require cultural heritage mitigation. The access surveys were undertaken to advise and agree upon appropriate access. Access routes were agreed upon with Soil Engineering to avoid impacts to cultural heritage assets.
- 4.3 The excavation of trial pits during the ground investigations was carried out by Soil Engineering using a mechanical excavator with a flat-bladed bucket under constant archaeological supervision by the Archaeological Clerk of Works from AOC Archaeology. Excavation was undertaken in stages until either the first archaeological horizon or undisturbed natural deposits were encountered. The watching brief applied to all trial pits not within the road corridor and verges.
- 4.4 A brief written record of all trial pits, including layout, depth of topsoil and descriptions of general stratigraphy, was made by the Archaeological Clerk of Works regardless of whether archaeological features were identified. No archaeological features were identified. As this is an archaeological report all soil descriptions are based on an archaeological standard recording methodology and should not be used for any engineering or design purposes.
- 4.5 The locations of the trial pits were recorded by a Soil Engineering engineer using a hand-held GPS. AOC Archaeology used high resolution digital photography to record the upper layers of the trial pits, where archaeological features were potentially present, while further logging and photographs were taken by Soil Engineering upon completion of the trial pit.

#### 4.6 All work carried out in line with the following standards and guidance of the ClfA

- Code of Conduct (2014b);
- Standard and guidance for an archaeological watching brief (2014a)

### 5.0 Results

- 5.1 The watching brief was carried out between 5<sup>th</sup> March to 26<sup>th</sup> April 2019 in typical spring conditions, with varying mild and cold weather and occasional showers of rain, sleet and snow. However, archaeological visibility was generally good and the Ground Investigation works progressed unhindered. In total, 25 trial pits were monitored during the Supplementary Ground Investigation works and access for 20 boreholes was advised on in advance of works.
- 5.2 No archaeological features or deposits were recorded in any of the trial pits. A full list of the trial pits monitored can be found in **Appendix 1**, where further detail on the individual trial pits can be found.
- 5.3 The trial pits were between 1.3-4.1m long and between 0.6-2m wide (**Plates 1-3**). The size of some trial pits was limited by thick vegetation and tree cover. The trial pits were extended to a depth of 4.5m or 6m after completion of archaeological excavation unless groundwater, collapse or other unavoidable factors prevented further excavation.
- 5.4 In general topsoil was dark brown sandy loam between 0.03-0.6m deep. The natural subsoil was mostly light or mid orange-brown sandy silt with occasional small sized sub-rounded and rounded stones (**Plates 4-6**). Made ground was also frequently encountered. Some variations in colour and composition of the subsoil were observed across the site.
- 5.5 No archaeological features were observed in any of the trial pits.
- 5.6 A full list of boreholes that were advised on for access can be found in **Appendix 3**. No boreholes needed any mitigation or change to the access as no upstanding archaeological remains were noted in the vicinity.





**Plate 1: A typical trial pit (TBT4049)**



**Plate 2: A typical trial pit (TBT4028)**



**Plate 3: A typical trial pit (TBT4036)**



**Plate 4: A typical soil profile (TBT4049)**



**Plate 5: A typical soil profile (TBT4030)**



**Plate 6: A typical soil profile (TBT4036)**

## 6.0 Conclusions and Recommendations

6.1 No archaeological features or deposits were observed during fieldwork. The trial pits were spread over an 8.4km corridor of land, with varied environmental conditions, and only represent a small percentage of the total area that could be impacted upon by future development. The *Environmental Report* ([Jacobs and Transport Scotland 2019](#)) has indicated the potential for archaeological remains in the area. None of these were encountered during the Ground Investigation works, however future development may impact upon them.

## 7.0 References

Chartered Institute for Archaeologists (CIfA). 2014a. *Standard and guidance for an archaeological watching brief*.

Chartered Institute for Archaeologists (CIfA). 2014b. *Code of Conduct*.

Jacobs and Transport Scotland 2019. *A9 Dualling Programme: Tay Crossing to Ballinluig: Supplementary Ground Investigation Environmental Report.*

Jacobs and Transport Scotland 2018. *A9 Dualling Programme: Tay Crossing to Ballinluig: DMRB Stage 3 Environmental Statement.* Chapter 15, Appendix A15.1 and Appendix A15.4

Perth and Kinross Council. 2019. *Archaeological Planning Advice.*

Scottish Government. 2011. *Planning Advice Note (PAN) 2/2011 Planning and Archaeology.*

Scottish Government. 2014. *Scottish Planning Policy.*

Williamson, S. & MacIver, C. 2019. *A9 Dualling Tay Crossing to Ballinluig, Supplementary Ground Investigation, Archaeological Watching Brief for Ground Investigations, Written Scheme of Investigation.* Unpublished AOC Archaeology report.

## Appendix 1 List of Monitored Trial Pits

Trial Pit No.	Dimensions (l x b x d) (m)	Topsoil Depth (m)	General Stratigraphy Notes	Co-ordinates	Archaeological findings	Date
TBT4001	3.0 x 0.9 x 4.5 E-W	0.3	Mid brown sandy loam topsoil over mid orange brown gravelly subsoil containing medium sized subrounded stones c.0.1m - 0.2m over mid yellow orange sand subsoil.	300472.8E 744751.6N	None	13/03/2019
TBT4002	2.5 x 0.8 x 4.5 N-S	0.05	Made ground. Thin topsoil of mid brown sandy loam over mid grey brown gravelly sand with occasional medium rounded and sub-rounded stones up to 0.2m onto mid yellow orange sand subsoil.	300472.8E 744751.6N	None	08/03/2019
TBT4003	3.2 x 1.9 x 3.9 N-S	0.4	Brown topsoil with frequent rooting over very light brown sand subsoil.	300210.6E 746618.9N	None	22/03/2019
TBT4026	3.4 x 0.9 x 2.6 N-S	0.4	Mid brown sandy loam topsoil over dark brown black silt subsoil.	Not provided – moved from original location	None	12/03/2019
TBT4027	2.5 x 2 x 5.2 ENE-WSW	0.2	Mid greyish brown silty sand with some small stones, and vegetation. Over a light yellowish grey silty sand.	298875.1E 751052.1N	None	25/04/2019
TBT4028	2.5x 0.8 x 2.1 N-S	0.1	Mid greyish brown sandy loam heavily disturbed by roots over a mid greyish orange sandy loam with some small stones, very similar looking to topsoil continues till 0.4m when it changes to alight orange sandy silt.	298848.1E 751130.5N	None	26/04/2019
TBT4029	2.2 x 0.8 x 3.6 NE-SW	0.05	Mid blackish brown sandy loam over a mid orange brown silt with some small stones.	298814.6 E 751218.5N	None	26/04/2019
TBT4030	2.8 x 2 x 4.2 N-S	0.3	Mid greyish brown sandy loam over a mid orange brown silty sand. Ground has been heavily disturbed by roots.	298515.0E 751583.7N	None	23/04/2019
TBT4031	3 x 0.8 x 4.5 NNW-SSE	0.3	Mid greyish brown silty sand with some small stones, heavily disturbed by roots over a mid orange brown silty sand with some stones.	298916.7E 751015.5N	None	26/04/2019
TBT4032	1.3 x 0.6 x 3.5 NE-SW	0.3	Mid blackish brown sandy loam over a light orange brown silty sand. Ground has been heavily disturbed by roots.	298481.3E 751611.2N	None	23/04/2019
TBT4033	3 x 0.8 x 4.5 NNW-SSE	0.3	Mid greyish brown silty sand with some small stones, heavily disturbed by roots over a mid orange brown silty sand with some stones.	298916.7E 751015.5N	None	26/04/2019
TBT4034	3.2 x 0.9 x 4.5 E-W	0.4	Gravel surface onto dark brown sandy loam topsoil, over mid orange brown sand subsoil with occasional small - medium angular and sub-angular stones.	300416.6E 744931.7N	None	08/03/2019

Trial Pit No.	Dimensions (l x b x d) (m)	Topsoil Depth (m)	General Stratigraphy Notes	Co-ordinates	Archaeological findings	Date
TBT4035	3.8 x 1.5 x 5.8 N-S	0.3	Made ground. Mid brown sandy loam topsoil over mid greyish yellow brown gravelly sand with frequent medium sub-rounded stones c.0.1m - 0.3m over light yellow brown gravelly sand subsoil.	Not provided – moved from original location	None	14/03/2019
TBT4036	3.3 x 0.9 x 5.8 N-S	0.05	Mid brown sandy loam topsoil onto mid yellow brown gravelly sand subsoil with frequent small pebbles c. 0.03-0.09m.	300534.1E 744249.4N	None	14/03/2019
TBT4037	3.0 x 0.8 x 4.5 N-S	0.3	Made ground. Mid brown sandy loam topsoil over mid greyish yellow sand and gravel with frequent medium - large sub-rounded stones up to 0.3m, onto light yellow orange subsoil at 1.7m.	300514.9E 744591.6N	None	08/03/2019
TBT4040	4.1 x 0.9 x 4.5 N-S	0.35	Dark brown sandy loam over mid orange brown gravelly sand.	300481.9E 745389.1N	None	07/03/2019
TBT4041	3.2 x 0.9 x 4.5 NE-SW	0.4	Made ground. Light grey brown sandy loam over a mid greyish brown gravelly sand with occasional angular and sub-angular stones c0.1m - 0.3m, plus wood, ceramic tile and plastic sheeting, over orange brown sand subsoil reached at depth of 1.95m.	300238.4E 746846.0N	None	12/03/2019
TBT4042	2.4 x 0.9 x 3.0 N-S	0.4	Made ground. Mid brown sandy loam topsoil over tarmac surface measuring 0.15m thick over mid-light grey brown sand with frequent stones c.0.2m-0.8m and occasional tarmac fragments. Second tarmac surface reached at 2m. Also over made ground which was over subsoil mottled grey-orange brown silty sand.	Not provided – moved from original location	None	11/03/2019
TBT4043	2.9 x 0.9 x 3.4 E-W	0.3	Made ground. Mid brown sandy loam topsoil over mid grey brown silty sand with frequent angular and sub-angular stones c.0.2m - 0.9m and infrequent tarmac fragments. Tarmac surface reached at depth of 1.2m measuring 0.15m thick, over mid orange sand subsoil.	299988.2E 748590.2N	None	11/03/2019
TBT4044	4.1 x 0.9 x 3.4 E-W	0.07	Light yellow brown sandy loam over mid yellow-orange gravelly sand subsoil with occasional small - medium angular and sub-angular stones. Made ground consisting of greyish yellow gravelly sand visible at E end of pit, measuring 0.7m across and 0.3m depth. Relating to construction of road.	299999.2E 748568.9N	None	07/03/2019
TBT4045	3.3 x 0.9 x 3.0 E-W	0.05	Leaf litter and mid brown sandy loam over mid yellow-orange gravelly sand subsoil with occasional small - medium angular and sub-angular stones.	300484.1E 745897.9N	None	07/03/2019
TBT4046	3.1 x 0.9 x 3.3 E-W	0.03	Mid brown sandy loam topsoil over mid yellow brown gravelly sand subsoil.	300480.0E 745911.1N	None	11/03/2019

<b>Trial Pit No.</b>	<b>Dimensions (l x b x d) (m)</b>	<b>Topsoil Depth (m)</b>	<b>General Stratigraphy Notes</b>	<b>Co-ordinates</b>	<b>Archaeological findings</b>	<b>Date</b>
<b>TBT4047</b>	2.9 x 0.9 x 3.0 N-S	0.03	Mid brown sandy loam topsoil over mid yellow brown gravelly sand subsoil.	300474.7E 745926.5N	None	12/03/2019
<b>TBT4048</b>	3.6 x 0.9 x 3.1 N-S	0.19	Light yellow brown sandy loam over mid yellow-orange gravelly sand subsoil with occasional small - medium angular and sub-angular stones.	300487.9E 745930.3N	None	07/03/2019
<b>TBT4049</b>	3.2 x 2 x 4.3 NW-SE	0.6	Made ground. Mid blackish brown sandy loam over a mid orange brown silty loam with some small stones.	Location not known	None.	23/04/2019

## Appendix 2 List of Site Photographs\*

\*To be viewed alongside Appendix 5: Plates (seperate pdf)

Photo No.	Trial Pit No.	Description	Direction Facing	Date
AOC70386_(1)	TBT4048	Mid-excavation image showing subsoil	S	07/03/2019
AOC70386_(2)	TBT4045	Mid-excavation image showing subsoil	W	07/03/2019
AOC70386_(3)	TBT4044	Mid-excavation image showing subsoil	W	07/03/2019
AOC70386_(4)	TBT4034	Mid-excavation image showing subsoil	E	08/03/2019
AOC70386_(5)	TBT4034	S-facing section	N	08/03/2019
AOC70386_(6)	TBT4034	Post excavation image	E	08/03/2019
AOC70386_(7)	TBT4037	Mid-excavation image showing subsoil	N	08/03/2019
AOC70386_(8)	TBT4037	Mid-excavation image showing E facing section	W	08/03/2019
AOC70386_(9)	TBT4037	Post excavation image	N	08/03/2019
AOC70386_(10)	TBT4002	Mid-excavation image showing subsoil	W	08/03/2019
AOC70386_(11)	TBT4002	S-facing section	N	08/03/2019
AOC70386_(12)	TBT4043	General pre-excavation image of area	N	11/03/2019
AOC70386_(13)	TBT4043	Mid-excavation image showing subsoil	E	11/03/2019
AOC70386_(14)	TBT4043	N-facing section	S	11/03/2019
AOC70386_(15)	TBT4043	Post excavation image	S	11/03/2019
AOC70386_(16)	TBT4042	Mid-excavation image showing upper tarmac surface	S	11/03/2019
AOC70386_(17)	TBT4042	Mid-excavation image showing subsoil	S	11/03/2019
AOC70386_(18)	TBT4042	Post excavation image	S	11/03/2019
AOC70386_(19)	TBT4046	Mid-excavation image showing subsoil	W	11/03/2019
AOC70386_(20)	TBT4046	S-facing section	N	11/03/2019
AOC70386_(21)	TBT4047	Mid-excavation image showing subsoil	SW	12/03/2019
AOC70386_(22)	TBT4047	SE-facing section	NW	12/03/2019
AOC70386_(23)	TBT4047	SE-facing section	NW	12/03/2019
AOC70386_(24)	TBT4041	Mid-excavation image showing subsoil	SE	12/02/2019
AOC70386_(25)	TBT4041	Mid-excavation image showing NE-facing section	SW	12/02/2019
AOC70386_(26)	TBT4026	Mid-excavation image showing subsoil	N	12/03/2019
AOC70386_(27)	TBT4026	Mid-excavation image showing W-facing section	E	12/03/2019
AOC70386_(28)	TBT4001	Mid-excavation image showing subsoil	E	13/03/2019
AOC70386_(29)	TBT4001	Mid-excavation image showing subsoil	E	13/03/2019
AOC70386_(30)	TBT4001	N-facing section	S	13/03/2019
AOC70386_(31)	TBT4001	Mid-excavation image showing subsoil	E	13/03/2019
AOC70386_(32)	TBT4001	Mid-excavation image showing subsoil	E	13/03/2019
AOC70386_(33)	TBT4001	S-facing section	N	13/03/2019
AOC70386_(34)	TBT4001	Post excavation image	W	13/03/2019
AOC70386_(35)	TBB4031	General image showing access for borehole	NW	13/03/2019

Photo No.	Trial Pit No.	Description	Direction Facing	Date
AOC70386_(36)	TBB4031	General image showing access for borehole	NW	13/03/2019
AOC70386_(37)	TBB4031	General image of rig at borehole	SE	13/03/2019
AOC70386_(38)	TBB4031	General image of rig at borehole	SE	13/03/2019
AOC70386_(39)	TBB4034	General image showing access for borehole	SW	13/03/2019
AOC70386_(40)	TBB4034	General image showing access for borehole	SW	13/03/2019
AOC70386_(41)	TBB4001	General image showing access for borehole	S	14/03/2019
AOC70386_(42)	TBB4001	General image showing access for borehole	S	14/03/2019
AOC70386_(43)	TBT4035	Mid-excavation image showing subsoil	N	14/03/2019
AOC70386_(44)	TBT4035	W-facing section	E	14/03/2019
AOC70386_(45)	TBT4036	Mid-excavation image showing subsoil	S	14/03/2019
AOC70386_(46)	TBT4036	W-facing section	E	14/03/2019
AOC70386_(47)	TBB4020	General area image	S	15/03/2019
AOC70386_(48)	TBB4020	General area image	S	15/03/2019
AOC70386_(49)	TBB4020	General area image	E	15/03/2019
AOC70386_(50)	TBB4019	General area image	SE	15/03/2019
AOC70386_(51)	TBB4019	General area image	SE	15/03/2019
AOC70386_(52)	TBB4017	General area image	N	15/03/2019
AOC70386_(53)	TBB4015	General area image	W	15/03/2019
AOC70386_(54)	TBB4008	General area image	S	15/03/2019
AOC70386_(55)	TBB4009 + TBB4010	General area image	N	15/03/2019
AOC70386_(56)	TBB4011	General area image	N	15/03/2019
AOC70386_(57)	TBB4006	General area image	S	15/03/2019
AOC70386_(58)	TBB4006	General area image	SW	15/03/2019
AOC70386_(59)	TBB4006	General area image	E	15/03/2019
AOC70386_(60)	TBB4005	General area image	E	15/03/2019
AOC70386_(61)	TBB4003, 4004, 4005	General area image	S	15/03/2019
AOC70386_(62)	TBB4003, 4004, 4005	General area image	N	15/03/2019
AOC70386_(63)	TBB4012	General area image	S	15/03/2019
AOC70386_(64)	TBB4012	General area image	S	15/03/2019
AOC70386_(65)	TBB4027	General area image	E	15/03/2019
AOC70386_(66)	TBB4027	General area image	W	15/03/2019
AOC70386_(67)	TBB4028	General area image	E	15/03/2019
AOC70386_(68)	TBB4028	General area image	SE	15/03/2019
AOC70386_(69)	TBB4033	General area image	E	15/03/2019
AOC70386_(70)	TBB4033	General area image	E	15/03/2019
AOC70386_(71)	TBB4033	General area image	E	15/03/2019
AOC70386_(72)	TBB4007	General image showing access to field via farm track	S	15/03/2019



Photo No.	Trial Pit No.	Description	Direction Facing	Date
AOC70386_(73)	TBB4007	General area image	W	15/03/2019
AOC70386_(74)	TBB4007	General area image	W	15/03/2019
AOC70386_(75)	TBT4003	Pre-excavation image of trial pit, showing steep slope	E	22/03/2019
AOC70386_(76)	TBT4003	Mid-excavation image showing subsoil and W-facing section	E	22/03/2019
AOC70386_(77)	TBT4030	Retaining wall close to borehole	NE	23/04/2019
AOC70386_(78)	TBT4030	Retaining wall close to borehole	NE	23/04/2019
AOC70386_(79)	TBT4030	Retaining wall close to borehole	SE	23/04/2019
AOC70386_(80)	TBT4030	Retaining wall close to borehole	SE	23/04/2019
AOC70386_(81)	TBT4032	Pre-excavation image of trial pit	NE	23/04/2019
AOC70386_(82)	TBT4032	Pre-excavation image of trial pit, showing steep slope	NNW	23/04/2019
AOC70386_(83)	TBT4032	NW-facing section	SE	23/04/2019
AOC70386_(84)	TBT4032	Mid-excavation image showing subsoil	SE	23/04/2019
AOC70386_(85)	TBT4030	Pre-excavation image of trial pit	NE	23/04/2019
AOC70386_(86)	TBT4030	Mid-excavation image showing subsoil	N	23/04/2019
AOC70386_(87)	TBT4030	W-facing section	E	23/04/2019
AOC70386_(88)	TBT4049	Pre-excavation image of trial pit	SW	23/04/2019
AOC70386_(89)	TBT4049	Mid-excavation image showing subsoil	NW	23/04/2019
AOC70386_(90)	TBT4049	NE-facing section	SW	23/04/2019
AOC70386_(92)	TBT4027	Pre-excavation image of trail pit, showing slope	N	25/04/2019
AOC70386_(93)	TBT4027	NNW-facing section	SSE	25/04/2019
AOC70386_(94)	TBT4027	Mid-excavation image showing subsoil	NNE	25/04/2019
AOC70386_(95)	TBT4033	Pre-excavation image of trail pit	ESE	25/04/2019
AOC70386_(96)	TBT4033	WSW-facing section	WSW	25/04/2019
AOC70386_(97)	TBT4033	Mid-excavation image showing subsoil	NNW	25/04/2019
AOC70386_(98)	TBT4031	Mid-excavation image showing subsoil	NNW	26/04/2019
AOC70386_(99)	TBT4031	Mid-excavation image showing subsoil	NNW	26/04/2019
AOC70386_(100)	TBT4031	ENE facing section	WSW	26/04/2019
AOC70386_(101)	TBT4029	Pre-excavation image of trail pit, topsoil has previously been removed	NE	26/04/2019
AOC70386_(102)	TBT4029	Pre-excavation image of trail pit, showing slope, topsoil has previously been removed	N	26/04/2019
AOC70386_(103)	TBT4029	NW facing section, topsoil has previously been removed	SE	26/04/2019
AOC70386_(104)	TBT4029	NW facing section, topsoil has previously been removed, close up	SE	26/04/2019
AOC70386_(105)	TBT4029	Mid-excavation image showing subsoil, showing slope, topsoil has previously been removed	NE	26/04/2019
AOC70386_(106)	TBT4028	Wall close to TBT4028	E	26/04/2019
AOC70386_(107)	TBT4028	Wall close to TBT4028	S	26/04/2019

Photo No.	Trial Pit No.	Description	Direction Facing	Date
AOC70386_(108)	TBT4028	Wall face close to TBT4028	E	26/04/2019
AOC70386_(109)	TBT4028	Wall close to TBT4028	N	26/04/2019
AOC70386_(110)	TBT4028	Pre-excavation image of trail pit	S	26/04/2019
AOC70386_(111)	TBT4028	Mid-excavation image showing subsoil	S	26/04/2019
AOC70386_(112)	TBT4028	W facing section	E	26/04/2019
AOC70386_(113)	TBT4028	Post-excavation, showing area back filled, wall not impacted on	E	26/04/2019
AOC70386_(114)	TBT4028	Post-excavation, showing area back filled, wall not impacted on	N	26/04/2019

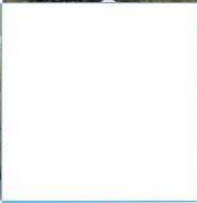
### Appendix 3 List of Borehole Access Advised On

Borehole No.	Description of Access	Further Archaeological Input Required
TBB4001	Borehole position is situated on the verge of the road. Traffic management is to be set up to allow access from the A9 itself. No visible upstanding archaeological remains en route.	None.
TBB4003	Borehole position is situated on the verge of the road. Traffic management is to be set up to allow access from the A9 itself. No visible upstanding archaeological remains en route.	None.
TBB4004	Borehole position is situated on the verge of the road. Traffic management is to be set up to allow access from the A9 itself. No visible upstanding archaeological remains en route.	None.
TBB4005	Borehole position is situated on the verge of the road. Traffic management is to be set up to allow access from the A9 itself. No visible upstanding archaeological remains en route.	None.
TBB4006	Borehole situated within a wooded area up a steep hill from a unnamed road close to Rotmell. Access from the unnamed road through trees. No visible upstanding archaeological remains en route.	None.
TBB4007	Borehole situated within a grass field. Access from nearby unnamed road close to Rotmell farm. No visible upstanding archaeological remains en route.	None.
TBB4008	Borehole position is situated on the verge of the road. Traffic management is to be set up to allow access from the A9 itself. No visible upstanding archaeological remains en route.	None.
TBB4009	Borehole position is situated on the verge of the road. Traffic management is to be set up to allow access from the A9 itself. No visible upstanding archaeological remains en route.	None.
TBB4010	Borehole position is situated on the verge of the road. Traffic management is to be set up to allow access from the A9 itself. No visible upstanding archaeological remains en route.	None.
TBB4011	Borehole position is situated on the verge of the road. Traffic management is to be set up to allow access from the A9 itself. No visible upstanding archaeological remains en route.	None.
TBB4012	Borehole position is situated on the verge of the road. Traffic management is to be set up to allow access from the A9 itself. No visible upstanding archaeological remains en route.	None.

Borehole No.	Description of Access	Further Archaeological Input Required
TBB4015	Borehole position is situated down a bank from the A9. Access to be made through fence. No visible upstanding archaeological remains en route.	None.
TBB4017	Borehole position is situated on the verge of the road. Traffic management is to be set up to allow access from the A9 itself. No visible upstanding archaeological remains en route.	None.
TBB4019	Borehole situated within a wooded area. Access from nearby unnamed road through trees. No visible upstanding archaeological remains en route.	None.
TBB4020	Borehole situated within a wooded area. Access from nearby unnamed road through trees. No visible upstanding archaeological remains en route.	None.
TBB4027	Borehole situated within a wooded area. Access from nearby unnamed road through trees. No visible upstanding archaeological remains en route.	None.
TBB4028	Borehole situated within a wooded area. Access from nearby unnamed road through trees. No visible upstanding archaeological remains en route.	None.
TBB4031	Borehole situated within a wooded area. Access from nearby General Wade's Military road through trees. No visible upstanding archaeological remains en route.	None.
TBB4033	Borehole situated within a wooded area. Access from nearby unnamed road through trees. No visible upstanding archaeological remains en route.	None.
TBB4034	Borehole situated within a field, currently covered by rough grassland. Situated between A9 and General Wade's Military road. Access from General Wade's Military road. No visible upstanding archaeological remains en route.	None.

## Appendix 4 List of Drawings

(Drawings prepared by Soil Engineering Geoservices Ltd)



AOC Archaeology (Inverness) The Old Estate Office Rosehaugh Estate Avoch Ross-shire IV9 8RF  
| tel: 01463 819 841 | mob: 07972 259 255 | e-mail: inverness@aocarchaeology.com

[www.aocarchaeology.com](http://www.aocarchaeology.com)