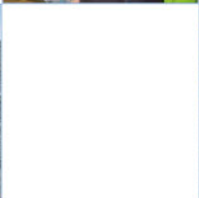
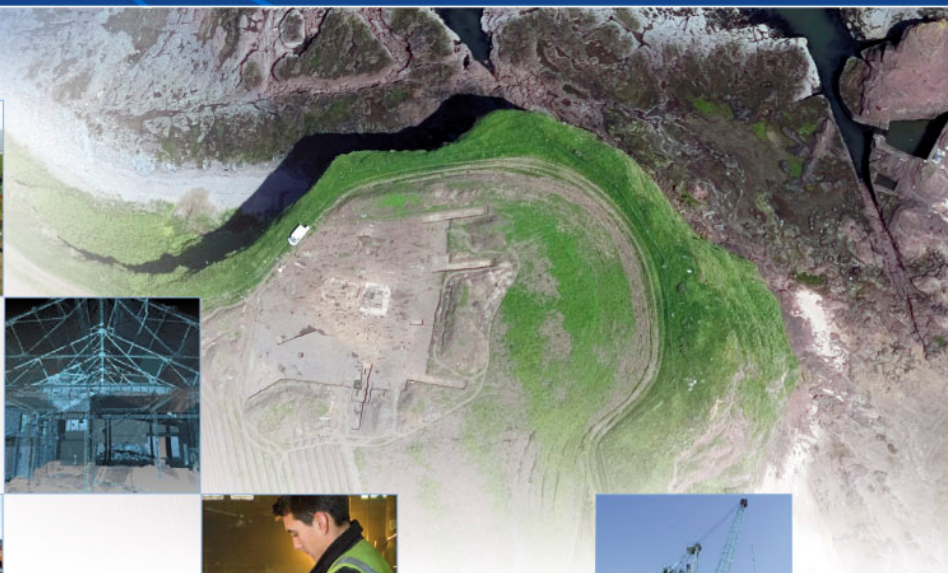
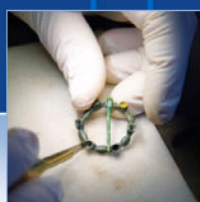


# Parliament House, Edinburgh Watching Brief: Data Structure Report

20761  
July 2008



ARCHAEOLOGY

| HERITAGE

| CONSERVATION

## Parliament House, Edinburgh Watching Brief: Data Structure Report

---

On Behalf of:	Scottish Court Service
National Grid Reference (NGR):	NT 2580 7350
AOC Project No:	20761
Prepared by:	Victoria Clements
Illustration by:	James Knowles
Edited by:	Ronan Toolis
Date of Fieldwork:	16 <sup>th</sup> July 2008
Date of Report:	18 <sup>th</sup> July 2008

This document has been prepared in accordance with AOC standard operating procedures.

Author: Victoria Clements	Date: 18 <sup>th</sup> July 2008
Approved by: John Gooder	Date: 18 <sup>th</sup> July 2008
Draft Report Stage: Draft	Date: 18 <sup>th</sup> July 2008

**Enquiries to:** AOC Archaeology Group  
Edgefield Industrial Estate  
Edgefield Road  
Loanhead  
EH20 9SY

Tel. 0131 440 3593  
Fax. 0131 440 3422  
e-mail. [admin@aocarchaeology.com](mailto:admin@aocarchaeology.com)



## Contents

	Page
List of illustrations .....	1
List of plates .....	1
List of appendices .....	1
Abstract.....	2
<b>1 INTRODUCTION .....</b>	<b>3</b>
1.1 Background .....	3
1.2 Location .....	3
<b>2 OBJECTIVES .....</b>	<b>3</b>
<b>3 METHODOLOGY .....</b>	<b>3</b>
<b>4 RESULTS .....</b>	<b>4</b>
<b>5 CONCLUSION.....</b>	<b>5</b>
<b>6 BIBLIOGRAPHIC REFERENCES.....</b>	<b>5</b>
<b>APPENDIX 1.....</b>	<b>7</b>
Photographic Record .....	7
<b>APPENDIX 2.....</b>	<b>7</b>
Discovery and Excavation in Scotland Report .....	7

## List of illustrations

Figure 1      Location of watching brief

## List of plates

Plate 1      Trial Pit 1 from east

Plate 2      Trial Pit 2 from north

## List of appendices

Appendix 1      Photographic Record

Appendix 2      *Discovery and Excavation in Scotland* Report

## Abstract

---

This report represents the results of an archaeological watching brief undertaken by AOC Archaeology Group at Parliament House, Edinburgh, (centred NGR: NT 2580 7350). The work was commissioned by Interserve Project Services Ltd on behalf of the Scottish Courts Service to address the potential impact of two trial pits between the south end of the Bank building and the PSA building, Parliament House, Edinburgh. The archaeological works were designed in accordance with the principles inherent in NPPG 5 (SOEnD 1994) and PAN 42 (SOEnD 1994a).

The objective of the work was to monitor all groundbreaking works associated with the trial pits. The work was carried out during July 2008 and was conducted according to a scope of works which was agreed in advance by the City of Edinburgh Council Archaeology Service (CECAS).

The watching brief revealed no features or artefacts of archaeological significance. No further archaeological works are recommended.

## 1 INTRODUCTION

### 1.1 Background

- 1.1.1 AOC Archaeology Group was commissioned by Interserve Project Services Ltd on behalf of the Scottish Courts Service to undertake an archaeological watching brief on two trial pits in the courtyard between the south end of the Bank building and the PSA building, Parliament House, Edinburgh. The archaeological works were designed to satisfy the requirements of the local planning authority, as advised by Mr John Lawson of the City of Edinburgh Council Archaeology Service (CECAS) and consisted of archaeological monitoring of topsoil or overburden stripping and other ground breaking works to a depth of 1 m.

### 1.2 Location

- 1.2.1 The trial pits are located in a small split level courtyard between the south end of the Bank building and the PSA building, Parliament House, Edinburgh (NGR: NT 2580 7350). The trial pits are situated to the north and south of a large service unit which runs east/west through the courtyard; the trial pit to the north being on the upper level while the pit on the south is on the lower basement level. The courtyard has a brick floor surface with a sandstone wall running east/west dividing the two levels. The location of the trial pits is shown in Figure 1.

## 2 OBJECTIVES

- 2.1 The objectives of the archaeological watching brief were:
- i) to determine the character, extent and quality, date and condition of any archaeologically significant remains that may be disturbed by the proposed development works;
  - ii) to liaise with CECAS and the client in the event of significant archaeological features and/or small finds being unearthed as to the most appropriate response in safeguarding these features by either preservation *in situ*, if at all feasible, or by archaeological recording.

## 3 METHODOLOGY

- 3.1 The works involved an archaeological watching brief on two 1 m x 1 m trial pits, including the stripping of topsoil/overburden and other groundbreaking works to a depth of 1 m within the trial pits by means of hand excavation. All ground breaking was monitored by an experienced field archaeologist. All recording was carried out according to AOC Archaeology Group's standard practices.
- 3.2 A black and white print and digital photographic record of the archaeological works was taken (Appendix 1).



## 4 RESULTS

- 4.1 The fieldwork was undertaken by a single archaeologist in dry bright weather conditions on 16<sup>th</sup> July 2008. The following should be read in conjunction with the data presented in Appendices 1 and 2 and Figure 1.
- 4.2 The groundbreaking works involved the excavation of two 1 m x 1 m trial pits for earth pits (Figure 1).
- 4.3 The trial pits were excavated to a depth of 1.0 m. The brick floor surface of the courtyard was removed over both areas to facilitate excavation. Trial pit 1 was located directly up against the wall of the PSA building in the lower part of the courtyard. Trial pit 2 was located directly adjacent to the service unit in the upper part of the courtyard (Figure 1).
- 4.4 Trial pit 1 revealed approximately 0.08 m of soft light red sand acting as levelling for the brick surface, overlying c. 0.70 m of modern light red stone backfill. This in turn overlay 0.20 m of modern backfill consisting of grey stone and sand. At a depth of c. 0.35 m the foundations of the wall of the PSA building were observed stepping out approximately 0.20 m and again at a depth of 0.55 m. A modern ceramic drain was observed in the northern part of the trial pit at a depth of around 0.95 m, which had been surrounded by pea gravel.



**Plate 1: Trial pit 1 from east**

- 4.5 Trial pit 2 revealed 0.10 m of very hard packed sand and cement acting as levelling for the brick surface. Below this lay approximately 0.90 m of mixed material consisting of friable dark brown black sandy clay and light yellow brown sandy material with frequent small (less than 0.10 m) fragments of stone and moderate medium fragments of sandstone (between 0.10 m and 0.25 m in size). In the north of the trial pit, a live service connecting the lighted bollards was observed at a depth of c. 0.20 m.



**Plate 2: Trial pit 2 from north**

- 4.6 Occasional small fragments of modern white ceramic, fragments of modern metal and fragments of modern ceramic drain were observed throughout the material in both of the trial pits. No significant archaeological features or artefacts were encountered by the watching brief.

## **5 CONCLUSION**

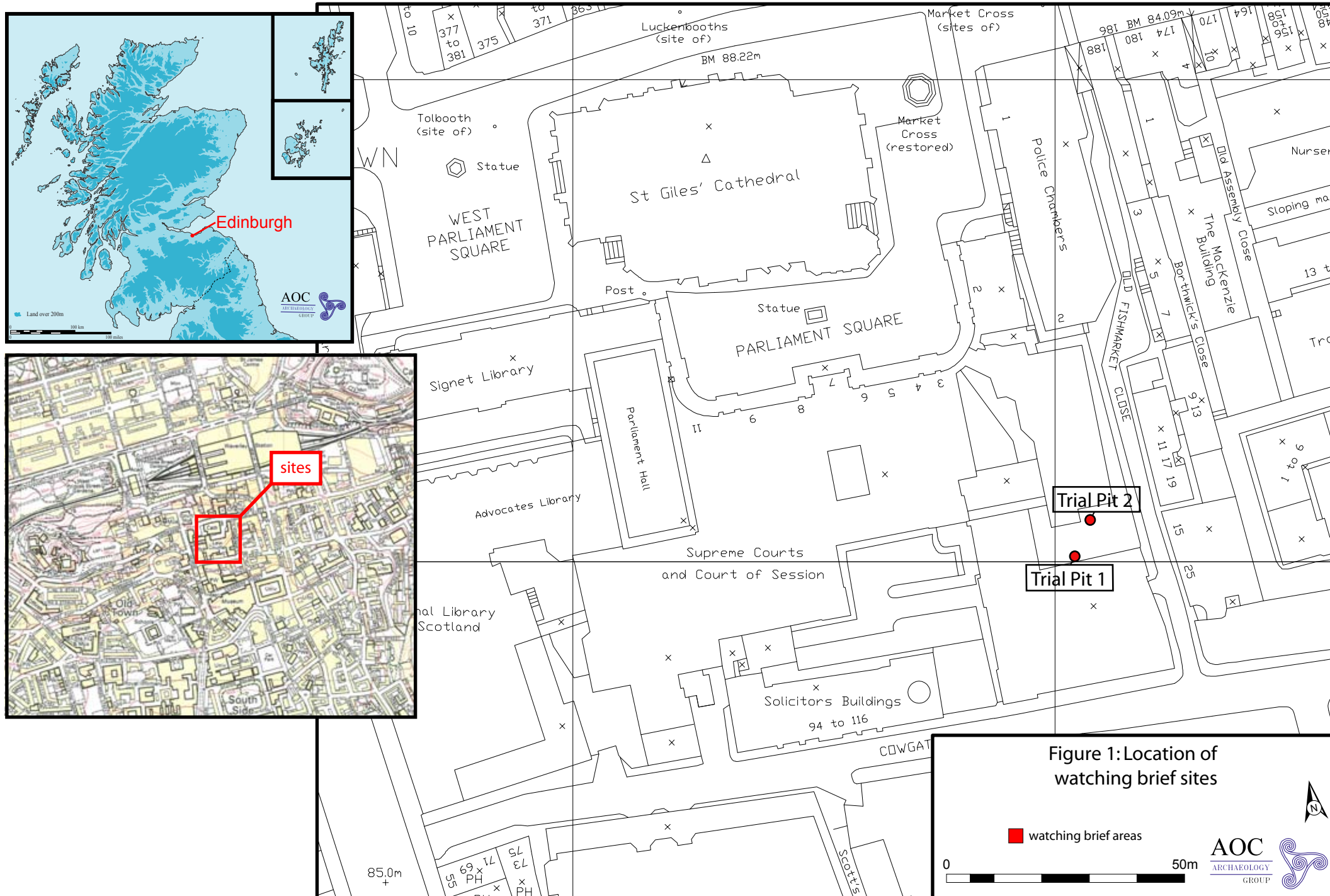
- 5.1 The hand excavation of the two trial pits revealed only modern disturbed backfill material. The courtyard area has obviously seen a deal of disturbance in the past as evidenced by the presence of foundations and modern services observed in both of the trial pits. No features or artefacts of archaeological significance were identified. No further works are recommended.

## **6 BIBLIOGRAPHIC REFERENCES**

SOEnD 1994 *National Planning Policy Guideline 5: Archaeology and Planning*. The Scottish Office Environment Department.

SOEnD 1994a *Planning Advice Note 42. Archaeology – The Planning Process and Scheduled Ancient Monument Procedures*. The Scottish Office Environment Department.





---

# **Parliament House, Edinburgh Watching Brief: Data Structure Report**

## **Section 2: Appendices**

## APPENDIX 1

### Photographic Record

Black & White Print Film 1

Frame	Description	From
1-2	Pre-Excavation shot of Trial Pit 1	E
3-4	Post-Excavation shot of Trial Pit 1	E
5-6	Post-Excavation shot of Trial Pit 2	N
7-8	Post-Excavation shot of Trial Pit 2	N

Digital Film 1

Frame	Description	From
1-2	Pre-Excavation shot of Trial Pit 1	E
3-4	Post-Excavation shot of Trial Pit 1	E
5-6	Post-Excavation shot of Trial Pit 2	N
7-8	Post-Excavation shot of Trial Pit 2	N

## APPENDIX 2

### Discovery and Excavation in Scotland Report

<b>LOCAL AUTHORITY:</b>	City of Edinburgh
<b>PROJECT TITLE/SITE NAME</b>	Parliament House, Edinburgh Watching Brief
<b>PROJECT CODE:</b>	AOC 20761
<b>PARISH:</b>	Edinburgh
<b>NAME OF CONTRIBUTOR:</b>	Victoria Clements
<b>NAME OF ORGANISATION:</b>	AOC Archaeology Group
<b>TYPE(S) OF PROJECT:</b>	Archaeological Watching Brief
<b>NMRS NO(S)</b>	None
<b>SITE/MONUMENT TYPE(S):</b>	None
<b>SIGNIFICANT FINDS:</b>	None
<b>NGR (2 letters, 6 figures)</b>	NT 2580 7350 (centred)
<b>START DATE</b> (this season)	16 <sup>th</sup> July 2008
<b>END DATE</b> (this season)	16 <sup>th</sup> July 2008
<b>PREVIOUS WORK</b> (incl. DES ref.)	
<b>MAIN DESCRIPTION:</b> (May include information from other fields)	An archaeological watching brief was carried out during the excavation of two small trial pits in a courtyard close to Fishmarket Close within the Scottish Courts Complex at Parliament House, Edinburgh. No features or artefacts of archaeological significance were encountered.
<b>PROPOSED FUTURE WORK:</b>	None
<b>CAPTION(S) FOR ILLUSTRS:</b>	--
<b>SPONSOR OR FUNDING BODY:</b>	Scottish Court Service
<b>ADDRESS OF MAIN CONTRIBUTOR:</b>	Edgefield Road Industrial Estate, Loanhead, Midlothian, EH20 9SY
<b>EMAIL ADDRESS:</b>	<a href="mailto:ronan.toolis@aocarchaeology.com">ronan.toolis@aocarchaeology.com</a>
<b>ARCHIVE LOCATION</b> (intended/deposited)	Archive to be deposited in NMRS



**AOC Archaeology Group**, Edgefield Industrial Estate, Edgefield Road, Loanhead EH20 9SY  
tel: 0131 440 3593 | fax: 0131 440 3422 | e-mail: [admin@aocarchaeology.com](mailto:admin@aocarchaeology.com)

[www.aocarchaeology.com](http://www.aocarchaeology.com)