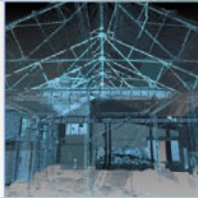
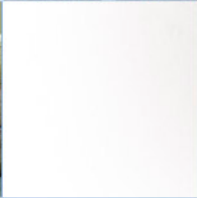


# Midmill, Kintore Evaluation Data Structure Report

20857

20<sup>th</sup> February 2008



ARCHAEOLOGY

HERITAGE

CONSERVATION

## Midmill, Kintore Evaluation Data Structure Report

**On Behalf of:** William Lippe Architects Ltd  
4 St. James Place  
Inverurie  
Aberdeenshire  
AB51 3UB

**National Grid Reference (NGR):** NJ 793 152

**AOC Project No:** 20857

**Prepared by:** Victoria Clements

**Illustration by:** Douglas Park

**Date of Fieldwork:** 12<sup>th</sup>-13<sup>th</sup> February 2008

**Date of Report:** 20<sup>th</sup> February 2008

This document has been prepared in accordance with AOC standard operating procedures.

**Author:** **Date:**  
**Approved by:** **Date:**  
**Draft/Final Report Stage:** **Date:**

**Enquiries to:** AOC Archaeology Group  
Edgefield Industrial Estate  
Edgefield Road  
Loanhead  
EH20 9SY

Tel. 0131 440 3593  
Fax. 0131 440 3422  
e-mail. [admin@aocarchaeology.com](mailto:admin@aocarchaeology.com)



## Contents

	Page
List of illustrations .....	1
List of appendices.....	1
Abstract.....	2
<b>1 INTRODUCTION .....</b>	<b>3</b>
1.1 Background .....	3
1.2 Location.....	3
1.3 Archaeological background .....	3
<b>2 OBJECTIVES.....</b>	<b>4</b>
<b>3 METHODOLOGY .....</b>	<b>4</b>
<b>4 RESULTS .....</b>	<b>4</b>
<b>5 CONCLUSION.....</b>	<b>5</b>
<b>6 BIBLIOGRAPHIC REFERENCES.....</b>	<b>5</b>
<b>APPENDIX 1.....</b>	<b>7</b>
Trench Descriptions.....	7
<b>APPENDIX 2.....</b>	<b>12</b>
Photographic Record .....	12
<b>APPENDIX 3.....</b>	<b>14</b>
Discovery and Excavation in Scotland Report .....	14

## List of illustrations

Figure 1 Site location and location of evaluation trenches

## List of appendices

Appendix 1 Trench Descriptions  
Appendix 2 Photographic Record  
Appendix 3 Discovery and Excavation in Scotland Report



## Abstract

---

This report represents the results of an archaeological evaluation undertaken by AOC Archaeology Group at Midmill, Kintore, Aberdeenshire (centred NGR: NJ 793 152). The work was commissioned by William Lippe Architects Ltd in advance of the redevelopment of an area of ground. The archaeological works were designed to satisfy the requirements of the local planning authority, as advised by Aberdeenshire Council Archaeology Service (ACAS), and are in accordance with the principles inherent in NPPG 5 (SOEnd 1994) and PAN 42 (SOEnd 1994a).

The objective of the work was to evaluate the archaeological potential of the development area. The work was carried out during February 2008 and was conducted according to the terms of a *Written Scheme of Investigation* (AOC 2008) which was agreed by Mrs Moira Greig of ACAS, and approved by the planning authority. The evaluation consisted of twenty-one trenches totalling 1820 m<sup>2</sup> and thereby comprising a 7% sample of the development area.

The evaluation revealed no features or artefacts of archaeological significance. No further archaeological works are recommended.

# 1 INTRODUCTION

## 1.1 Background

- 1.1.1 Planning consent is being sought by William Lippe Architects Ltd for a development at Midmill, Kintore, Aberdeenshire. AOC Archaeology Group was commissioned by William Lippe Architects Ltd to undertake an archaeological evaluation at the site. The evaluation works were designed to satisfy the requirements of the local planning authority, as advised by ACAS. The *Written Scheme of Investigation* (AOC 2008) acknowledged the presence of a scheduled ancient monument, Midmill Cairn (NMRS No. NJ71NE 31), in the south-east of the development area. No evaluation trenching was undertaken in this area.

## 1.2 Location

- 1.2.1 The proposed development area is a greenfield site located to the south of Kintore immediately east of the old A96 (NGR: NJ 793 152). The application area, amounting to some 2.6 ha is rectangular in plan. The site is bounded by agricultural land to the north and east, an industrial estate to the south and the old A96 to the west. The site has long been under agricultural use and appears to have undergone little previous development, apart from the construction of a new access road in the north of the site. The site is characterised by a slight ridge in the centre of the area which slopes gently to the south and north-west and more steeply to the north-east towards the Tuach Burn; these low-lying areas were damp and marshy. Midmill Cairn sits in the south-eastern corner of the development site. The subsoil visible during the evaluation comprised light orange silty sand and light yellow grey sand. The location and extent of the site is shown in Figure 1.

## 1.3 Archaeological background

- 1.3.1 Midmill Cairn (NMRS No. NJ71NE 31) represents the remains of a long barrow situated on the crest of a low rise in an area of relatively open ground. The surviving portion of the barrow stands 3.5 m high and measures at least 27 m in length, tapering in width from 20 m at the ESE end to 16 m on the WNW. A cleft cuts obliquely across the axis of the barrow at the ESE end, its line followed by an old field boundary. Beyond this field boundary to the east, the barrow has been subjected to significant quarrying though it may have extended another 34 m to the ESE, with its axis swinging a little further to the south to assume a NW and SE alignment. A small quarry has been dug into the WNW end of the barrow.
- 1.3.2 In recent years archaeological watching briefs (NMRS No. NJ 791 151) in the immediate environs of Midmill Cairn failed in identifying either significant features or artefacts. However in 2001 a few discrete features containing Neolithic pottery were found to the south of the development area (NMRS No. NJ 7952 1514).

## 2 OBJECTIVES

- 2.1 The objectives of the archaeological evaluation were:
- i) to determine and assess the character, extent, condition, quality, date and significance of any buried archaeological remains within the proposed development area;
  - ii) to advise and implement an appropriate form of mitigation, such as excavation, post-excavation analyses and publication, given the infeasibility of preserving the archaeological material *in situ*, should significant archaeological remains be encountered.

## 3 METHODOLOGY

- 3.1 Twenty-one trenches (Figure 1) totalled 1820 m<sup>2</sup>, a 7% sample of the site.
- 3.2 The trial trenching aimed to establish the extent, condition, character, quality, significance and date of any archaeological features present. The trenches were of varying lengths and set on varying orientations (Figure 1). A number of the trenches lengths and locations were adjusted slightly from those shown in the WSI, reflecting the presence of a new access road previously constructed in the north of the site. The fieldwork was undertaken with a field team of two archaeologists. Weather conditions during the evaluation were dry and fine with good archaeological visibility.
- 3.3 Stripping of the overburden was by means of a 360° excavator equipped with a toothless ditching bucket approximately 2.00 m wide. Excavation was undertaken in shallow units/spits until the first significant archaeological horizon or natural subsoil was reached. All machine excavation was supervised by an experienced field archaeologist.
- 3.4 All trial trenching was undertaken according to AOC Archaeology Group's standard operating procedures. Stratigraphy was recorded in all trenches even where no deposits of archaeological significance were discovered. The trenches were backfilled on completion of excavation.

## 4 RESULTS

- 4.1 The archaeological evaluation was undertaken between 12<sup>th</sup> and 13<sup>th</sup> February 2008. Twenty-one trenches, approximately 2.00 m wide were machine excavated (Figure 1).
- 4.2 The following should be read in conjunction with the data presented in Appendices 1-3 and Figure 1.
- 4.3 The excavation of all the trenches revealed topsoil comprising soft dark brown sandy silt with occasional small sub-rounded stones and occasional fragments of modern white ceramic. Four of the trenches (Trenches 1, 7, 8 and 9) contained areas of modern backfill (consisting of very compacted gravel, broken concrete, broken service pipes etc) as well as topsoil. Underlying the topsoil or modern backfill, natural subsoil in the south and west of the area consisted of soft light orange silty sand with occasional small sub-rounded stones and very occasional larger (0.40 m by 0.30 m by 0.15 m) angular stones. Elsewhere in the area the natural subsoil comprised very soft light yellow grey sand with very occasional small lenses of gravel.

- 4.4 In two of the Trenches, 3 and 18, field drains were observed cutting the natural subsoil. The low-lying and very damp nature of the ground in these areas probably accounts for the presence of these drains.
- 4.5 Occasional fragments of modern white ceramic and modern glass were observed scattered throughout the topsoil in all of the trenches.
- 4.6 No significant archaeological features or finds were encountered on this site.

## **5 CONCLUSION**

- 5.1 No features or artefacts of archaeological significance were identified. No further works are recommended.

## **6 BIBLIOGRAPHIC REFERENCES**

AOC 2008 *Midmill, Kintore: Written Scheme of Investigation*. AOC unpublished client document.

SOEnd 1994 *National Planning Policy Guideline 5: Archaeology and Planning*. The Scottish Office Environment Department.

SOEnd 1994a *Planning Advice Note 42. Archaeology – The Planning Process and Scheduled Ancient Monument Procedures*. The Scottish Office Environment Department.

---

# Midmill, Kintore Evaluation Data Structure Report

## Section 2: Appendices

## APPENDIX 1

### Trench Descriptions

#### Trench 1

<i>Dimensions</i>	70 m by 2 m
<i>Total Area</i>	140 m <sup>2</sup>
<i>Orientation</i>	N/S
<i>Depth of Topsoil</i>	0.40 m
<i>Depth of Excavation</i>	0.40 m
<i>Significant Features</i>	No archaeology; between 7 and 13 m from north end topsoil was replaced by modern backfill.
<i>Subsoil</i>	Soft light orange silty sand with occasional small rounded stones and very occasional larger angular stones (0.40 m by 0.30 m by 0.15 m).
<i>Finds</i>	Occasional fragments of modern white ceramic through topsoil, one very small fragment of clay pipe stem.

#### Trench 2

<i>Dimensions</i>	75 m by 2 m
<i>Total Area</i>	150 m <sup>2</sup>
<i>Orientation</i>	E/W
<i>Depth of Topsoil</i>	0.50 m
<i>Depth of Excavation</i>	0.50 m
<i>Significant Features</i>	No archaeology
<i>Subsoil</i>	Soft light orange silty sand with occasional small rounded stones and very occasional larger angular stones (0.40 m by 0.30 m by 0.15 m).
<i>Finds</i>	Very occasional fragments of modern white ceramic through topsoil.

#### Trench 3

<i>Dimensions</i>	25 m by 2 m
<i>Total Area</i>	50 m <sup>2</sup>
<i>Orientation</i>	NW/SE
<i>Depth of Topsoil</i>	0.50 m
<i>Depth of Excavation</i>	0.50 m
<i>Significant Features</i>	Between 10 m and 16 m from SE end a ceramic field drain was observed.
<i>Subsoil</i>	Soft light orange silty sand with occasional small rounded stones and very occasional larger angular stones (0.40 m by 0.30 m by 0.15 m).
<i>Finds</i>	Occasional fragments of modern white ceramic throughout topsoil.

#### Trench 4

<i>Dimensions</i>	48 m by 2 m
<i>Total Area</i>	96 m <sup>2</sup>
<i>Orientation</i>	NW/SE
<i>Depth of Topsoil</i>	0.40 m
<i>Depth of Excavation</i>	0.40 m
<i>Significant Features</i>	No archaeology
<i>Subsoil</i>	Soft light orange silty sand with occasional small rounded stones and very occasional larger angular stones (0.40 m by 0.30 m by 0.15 m).
<i>Finds</i>	Very occasional fragments of modern white ceramic throughout topsoil.

**Trench 5**

<i>Dimensions</i>	50 m by 2 m
<i>Total Area</i>	100 m <sup>2</sup>
<i>Orientation</i>	NE/SW
<i>Depth of Topsoil</i>	0.30 m
<i>Depth of Excavation</i>	0.30 m
<i>Significant Features</i>	No archaeology
<i>Subsoil</i>	Soft light orange silty sand with occasional small rounded stones and very occasional larger angular stones (0.40 m by 0.30 m by 0.15 m).
<i>Finds</i>	Very occasional fragments of modern white ceramic through topsoil.

**Trench 6**

<i>Dimensions</i>	50 m by 2 m
<i>Total Area</i>	100 m <sup>2</sup>
<i>Orientation</i>	E/W
<i>Depth of Topsoil</i>	0.30 m
<i>Depth of Excavation</i>	0.30 m
<i>Significant Features</i>	No archaeology
<i>Subsoil</i>	Soft light orange silty sand with occasional small rounded stones and very occasional larger angular stones (0.40 m by 0.30 m by 0.15 m).
<i>Finds</i>	Occasional fragments of modern white ceramic throughout topsoil.

**Trench 7**

<i>Dimensions</i>	25 m by 2 m
<i>Total Area</i>	50 m <sup>2</sup>
<i>Orientation</i>	SW/NE
<i>Depth of Topsoil</i>	0.30 m
<i>Depth of Excavation</i>	0.30 m
<i>Significant Features</i>	No archaeology; last 8-9 m towards NE end topsoil replaced by modern backfill.
<i>Subsoil</i>	Soft light orange silty sand with occasional small rounded stones and very occasional larger angular stones (0.40 m by 0.30 m by 0.15 m).
<i>Finds</i>	Occasional fragments of modern white ceramic throughout topsoil.

**Trench 8**

<i>Dimensions</i>	50 m by 2 m
<i>Total Area</i>	100 m <sup>2</sup>
<i>Orientation</i>	SE/NW
<i>Depth of Topsoil</i>	0.40 m topsoil with 0.60 m modern backfill in places
<i>Depth of Excavation</i>	0.60 m
<i>Significant Features</i>	No archaeology; between 5 m and 25 m from SE end modern backfill replaced topsoil to a depth of up to 0.60 m.
<i>Subsoil</i>	Very soft light yellow grey sand with occasional small lenses of gravel.
<i>Finds</i>	Occasional fragments of modern white ceramic through topsoil and plastic, broken service pipe etc in backfill.

**Trench 9**

<i>Dimensions</i>	48 m by 2 m
<i>Total Area</i>	96 m <sup>2</sup>
<i>Orientation</i>	NW/SE
<i>Depth of Topsoil</i>	0.25-0.40 m topsoil with 0.80 m modern backfill in places
<i>Depth of Excavation</i>	0.80 m



<i>Significant Features</i>	No archaeology; between 16 m and 30.5 m from SE end modern backfill replaced topsoil to a depth of up to 0.80 m.
<i>Subsoil</i>	Very soft light yellow grey sand with very occasional small lenses of gravel.
<i>Finds</i>	Occasional fragments of modern white ceramic through topsoil and plastic, broken service pipe etc in backfill.

**Trench 10**

<i>Dimensions</i>	50 m by 2 m
<i>Total Area</i>	100 m <sup>2</sup>
<i>Orientation</i>	NE/SW
<i>Depth of Topsoil</i>	0.40 m
<i>Depth of Excavation</i>	0.40 m
<i>Significant Features</i>	No archaeology
<i>Subsoil</i>	Very soft light yellow grey sand with very occasional small lenses of gravel.
<i>Finds</i>	Occasional fragments of modern white ceramic and plastic throughout topsoil.

**Trench 11**

<i>Dimensions</i>	25 m by 2 m
<i>Total Area</i>	50 m <sup>2</sup>
<i>Orientation</i>	N/S
<i>Depth of Topsoil</i>	0.40 m
<i>Depth of Excavation</i>	0.40 m
<i>Significant Features</i>	No archaeology
<i>Subsoil</i>	Very soft light yellow grey sand with very occasional small lenses of gravel.
<i>Finds</i>	Rare fragments of modern white ceramic throughout topsoil.

**Trench 12**

<i>Dimensions</i>	50 m by 2 m
<i>Total Area</i>	100 m <sup>2</sup>
<i>Orientation</i>	NW/SE
<i>Depth of Topsoil</i>	0.40 m
<i>Depth of Excavation</i>	0.40 m
<i>Significant Features</i>	No archaeology
<i>Subsoil</i>	Very soft light yellow grey sand with very occasional small lenses of gravel.
<i>Finds</i>	None.

**Trench 13**

<i>Dimensions</i>	50 m by 2 m
<i>Total Area</i>	100 m <sup>2</sup>
<i>Orientation</i>	NW/SE
<i>Depth of Topsoil</i>	0.40-0.60 m
<i>Depth of Excavation</i>	0.60 m
<i>Significant Features</i>	No archaeology
<i>Subsoil</i>	Very soft light yellow grey sand with very occasional small lenses of gravel.
<i>Finds</i>	None.

**Trench 14**

<i>Dimensions</i>	50 m by 2 m
<i>Total Area</i>	100 m <sup>2</sup>
<i>Orientation</i>	E/W
<i>Depth of Topsoil</i>	0.43 m
<i>Depth of Excavation</i>	0.43 m

<i>Significant Features</i>	No archaeology
<i>Subsoil</i>	Very soft light yellow grey sand with very occasional small lenses of gravel.
<i>Finds</i>	Occasional fragments of modern white ceramic through topsoil.
<b>Trench 15</b>	
<i>Dimensions</i>	25 m by 2 m
<i>Total Area</i>	50 m <sup>2</sup>
<i>Orientation</i>	NNW/SSE
<i>Depth of Topsoil</i>	0.45 m
<i>Depth of Excavation</i>	0.45 m
<i>Significant Features</i>	No archaeology
<i>Subsoil</i>	Very soft light yellow grey sand with very occasional small lenses of gravel.
<i>Finds</i>	Very occasional fragments of modern white ceramic throughout topsoil.
<b>Trench 16</b>	
<i>Dimensions</i>	50 m by 2 m
<i>Total Area</i>	100 m <sup>2</sup>
<i>Orientation</i>	SE/NW
<i>Depth of Topsoil</i>	0.57 m
<i>Depth of Excavation</i>	0.57 m
<i>Significant Features</i>	No archaeology
<i>Subsoil</i>	Very soft light yellow grey sand with very occasional small lenses of gravel.
<i>Finds</i>	Very occasional fragments of modern white ceramic throughout topsoil.
<b>Trench 17</b>	
<i>Dimensions</i>	50 m by 2 m
<i>Total Area</i>	100 m <sup>2</sup>
<i>Orientation</i>	SW/NE
<i>Depth of Topsoil</i>	0.31-0.51 m
<i>Depth of Excavation</i>	0.51 m
<i>Significant Features</i>	No archaeology
<i>Subsoil</i>	Very soft light yellow grey sand with very occasional small lenses of gravel.
<i>Finds</i>	Occasional fragments of modern white ceramic throughout topsoil.
<b>Trench 18</b>	
<i>Dimensions</i>	25 m by 2 m
<i>Total Area</i>	50 m <sup>2</sup>
<i>Orientation</i>	SE/NW
<i>Depth of Topsoil</i>	0.40-0.50 m
<i>Depth of Excavation</i>	0.50 m
<i>Significant Features</i>	Field drain observed at approximately 6 m from SE end, aligned N/S towards Tuach Burn.
<i>Subsoil</i>	Very soft light yellow grey sand with very occasional small lenses of gravel.
<i>Finds</i>	Very occasional fragments of modern white ceramic throughout topsoil.
<b>Trench 19</b>	
<i>Dimensions</i>	50 m by 2 m
<i>Total Area</i>	100 m <sup>2</sup>
<i>Orientation</i>	NNE/SSW
<i>Depth of Topsoil</i>	0.40-0.80 m
<i>Depth of Excavation</i>	0.80 m
<i>Significant Features</i>	No archaeology

---

*Subsoil* Very soft light yellow grey sand with very occasional small lenses of gravel.  
*Finds* Very occasional fragments of modern white ceramic throughout topsoil.

**Trench 20**

*Dimensions* 25 m by 2 m  
*Total Area* 50 m<sup>2</sup>  
*Orientation* SE/NW  
*Depth of Topsoil* 0.37 m  
*Depth of Excavation* 0.37 m  
*Significant Features* No archaeology  
*Subsoil* Very soft light yellow grey sand with very occasional small lenses of gravel.  
*Finds* None.

**Trench 21**

*Dimensions* 19 m by 2 m  
*Total Area* 38 m<sup>2</sup>  
*Orientation* ESE/WNW  
*Depth of Topsoil* 0.30 m  
*Depth of Excavation* 0.30 m  
*Significant Features* No archaeology  
*Subsoil* Very soft light yellow grey sand with very occasional small lenses of gravel.  
*Finds* Very occasional fragments of modern white ceramic throughout topsoil.

## APPENDIX 2

### Photographic Record

#### Black & White Print Film 1

Frame	Area	Description	From
1-2		Registration shots	
3-4		General site shot pre-excavation (Cairn in background)	NE
5-6	TR 1	General shot Trench 1	N
7-8	TR 1	East facing section of trench 1	E
9-10	TR 2	General shot Trench 2	E
11-12	TR 3	General shot Trench 3	SE
13-14	TR 4	General shot Trench 4	NW
15-16	TR 5	General shot Trench 5	NE
17-18	TR 6	General shot Trench 6	E
19-20	TR 7	General shot Trench 7	SW
21-22	TR 8	General shot Trench 8	SE
23-24	TR 9	General shot Trench 9	SE
25-26	TR 10	General shot Trench 10	SW
27-28	TR 11	General shot Trench 11	S
29-30	TR 12	General shot Trench 12	SE
31-32	TR 13	General shot Trench 13	NW
33-34	TR 14	General shot Trench 14	E
35-36	TR 15	General shot Trench 15	NNW

#### Black & White Print Film 2

Frame	Area	Description	From
1-2		Registration shots	
3-4	TR 16	General shot Trench 16	SE
5-6	TR 17	General shot Trench 17	SW
7-8	TR 19	General shot Trench 19	SSW
9-10	TR 20	General shot Trench 20	ESE
11-12	TR 18	General shot Trench 18	SE
13-14	TR 21	General shot Trench 21	E
15-16		General shot of site post-excavation (Cairn in background)	NE

## Colour Slide Film 1

Frame	Area	Description	From
1-2		Registration shots	
3-4		General site shot pre-excavation (Cairn in background)	NE
5-6	TR 1	General shot Trench 1	N
7-8	TR 1	East facing section of Trench 1	E
9-10	TR 2	General shot Trench 2	E
11-12	TR 3	General shot Trench 3	SE
13-14	TR 4	General shot Trench 4	NW
15-16	TR 5	General shot Trench 5	NE
17-18	TR 6	General shot Trench 6	E
19-20	TR 7	General shot Trench 7	SW
21-22	TR 8	General shot Trench 8	SE
23-24	TR 9	General shot Trench 9	SE
25-26	TR 10	General shot Trench 10	SW
27-28	TR 11	General shot Trench 11	S
29-30	TR 12	General shot Trench 12	SE
31-32	TR 13	General shot Trench 13	NW
33-34	TR 14	General shot Trench 14	E
35-36	TR 15	General shot Trench 15	NNW

## Colour Slide Film 2

Frame	Area	Description	From
1-2		Registration shots	
3-4	TR 16	General shot Trench 16	SE
5-6	TR 17	General shot Trench 17	SW
7-8	TR 19	General shot Trench 19	SSW
9-10	TR 20	General shot Trench 20	ESE
11-12	TR 18	General shot Trench 18	SE
13-14	TR 21	General shot Trench 21	E
15-16		General shot of site post-excavation (Cairn in background)	NE

## APPENDIX 3

### Discovery and Excavation in Scotland Report

<b>LOCAL AUTHORITY:</b>	Aberdeenshire Council
<b>PROJECT TITLE/SITE NAME</b>	Midmill, Kintore Evaluation
<b>PROJECT CODE:</b>	AOC 20857
<b>PARISH:</b>	Kintore
<b>NAME OF CONTRIBUTOR:</b>	Victoria Clements
<b>NAME OF ORGANISATION:</b>	AOC Archaeology Group
<b>TYPE(S) OF PROJECT:</b>	Archaeological Evaluation
<b>NMRS NO(S)</b>	NJ71NE 31
<b>SITE/MONUMENT TYPE(S):</b>	Midmill Cairn Scheduled Ancient Monument 3958
<b>SIGNIFICANT FINDS:</b>	None
<b>NGR (2 letters, 6 figures)</b>	NJ 793 152 (centred)
<b>START DATE (this season)</b>	12 <sup>th</sup> February 2008
<b>END DATE (this season)</b>	13 <sup>th</sup> February 2008
<b>PREVIOUS WORK (incl. DES ref.)</b>	
<b>MAIN (NARRATIVE) DESCRIPTION:</b> (May include information from other fields)	An archaeological evaluation was carried out in advance of proposed development. Twenty-one trenches (covering an area of 1820 m <sup>2</sup> ) were opened. Despite the presence of Midmill Cairn, a scheduled ancient monument, in the south-east corner of the development area, no features or artefacts of archaeological significance were identified.
<b>PROPOSED FUTURE WORK:</b>	None
<b>CAPTION(S) FOR ILLUSTRS:</b>	--
<b>SPONSOR OR FUNDING BODY:</b>	William Lippe Architects Ltd
<b>ADDRESS OF MAIN CONTRIBUTOR:</b>	Edgefield Road Industrial Estate, Loanhead, Midlothian, EH20 9SY
<b>EMAIL ADDRESS:</b>	<a href="mailto:admin@aocscot.co.uk">admin@aocscot.co.uk</a>
<b>ARCHIVE LOCATION (intended/deposited)</b>	Archive to be deposited in NMRS



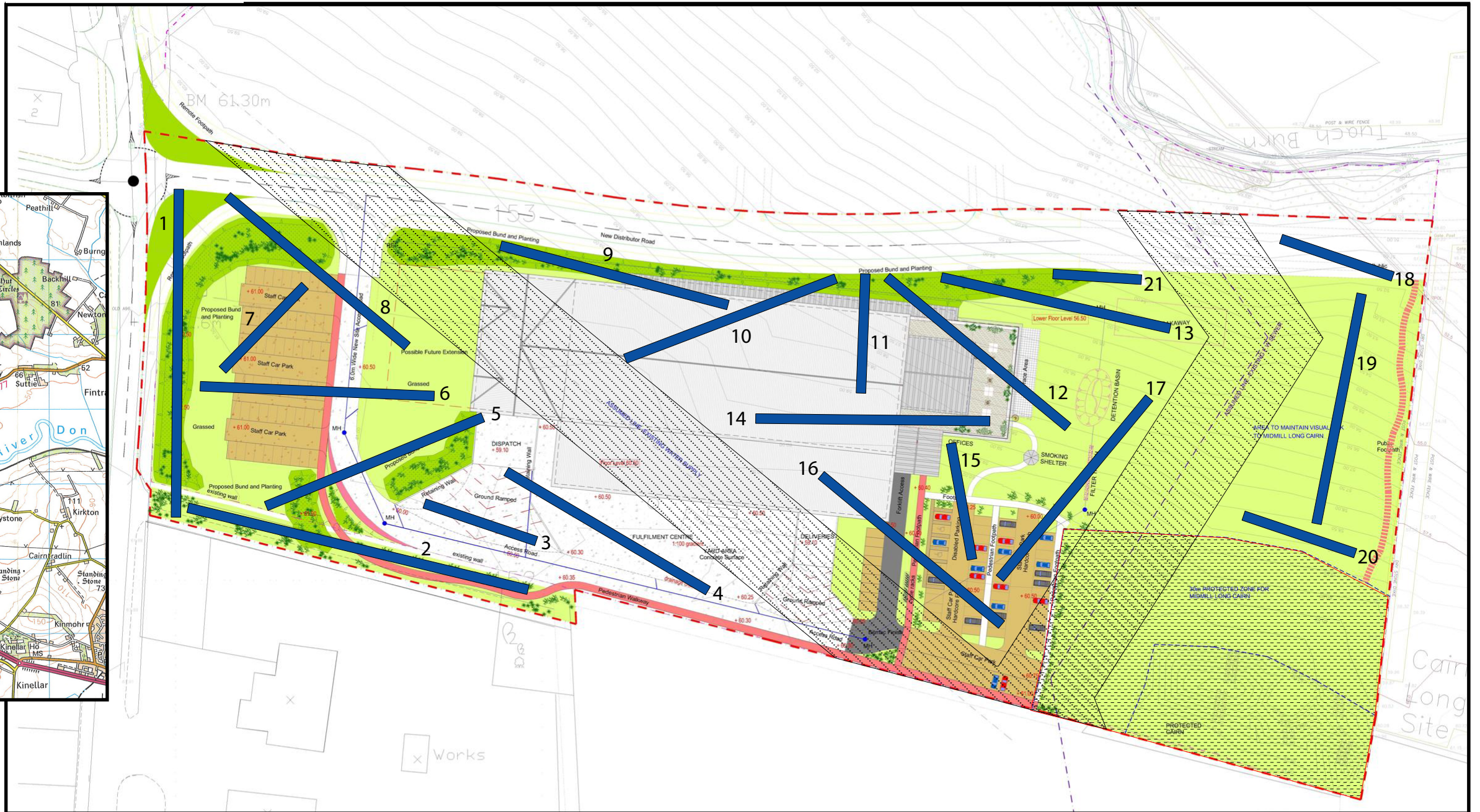
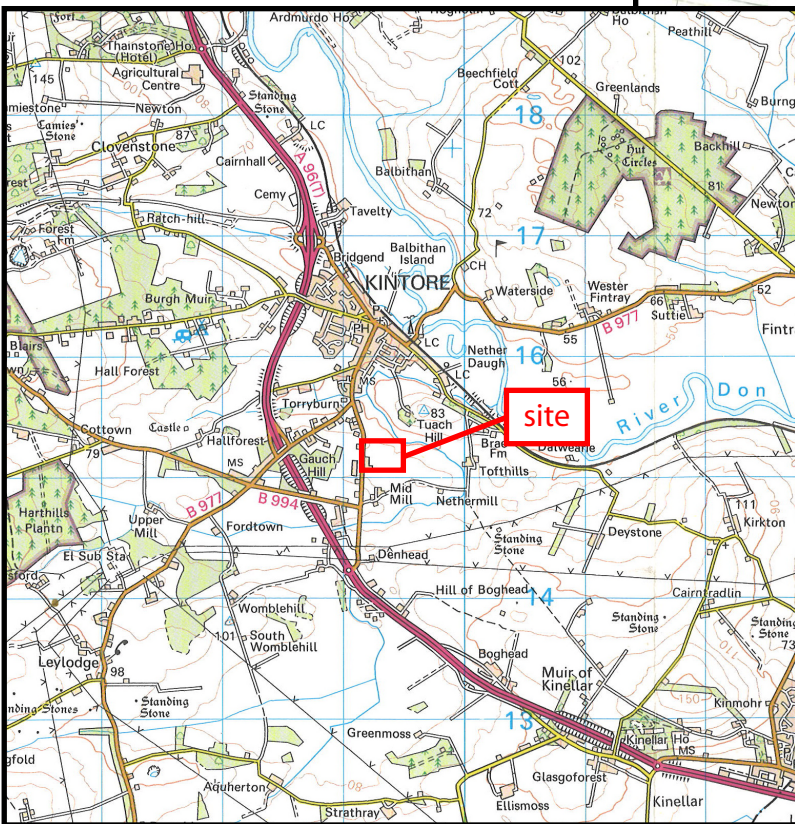
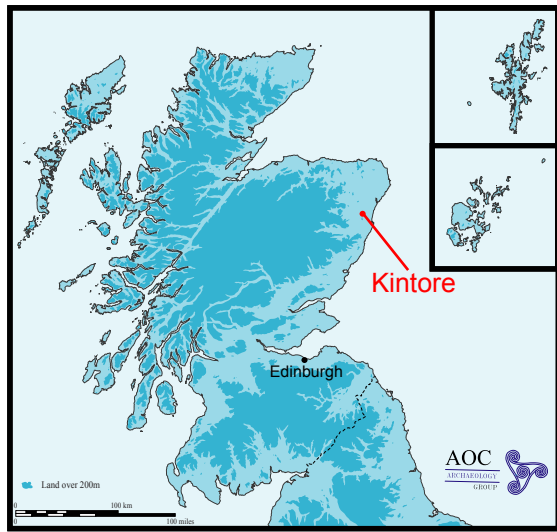




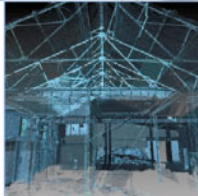
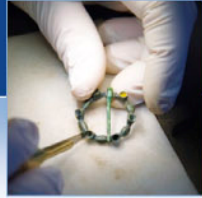


Figure 1: Site location and location of evaluation trenches

-  proposed development area
-  proposed evaluation trenches
-  service buffer zone
-  Scheduled Ancient Monument







**AOC Archaeology Group**, Edgefield Industrial Estate, Edgefield Road, Loanhead EH20 9SY  
tel: 0131 440 3593 | fax: 0131 440 3422 | e-mail: [admin@aocarchaeology.com](mailto:admin@aocarchaeology.com)

[www.aocarchaeology.com](http://www.aocarchaeology.com)