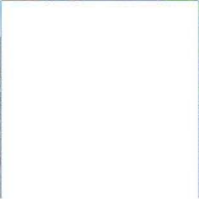
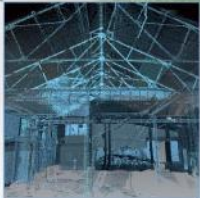
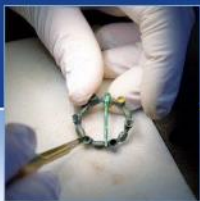


TE8258 A9 Dualling Programme: Pass of Birnam to Tay Crossing, Supplementary Ground Investigation Data Structure Report

AOC 70472
March 2020



AOC
Archaeology
Group



ARCHAEOLOGY

HERITAGE

CONSERVATION

TE8258 A9 Dualling Programme: Pass of Birnam to Tay Crossing, Supplementary Ground Investigation

Archaeological Watching Brief for Ground Investigations

Data Structure Report

On Behalf of:	Transport Scotland (undertaken on behalf of Soil Engineering Geoservices Limited)
National Grid Reference (NGR):	305555E 739476N to 300527E 744664N
AOC Project No:	70472
Prepared by:	Peta Glew, Callum Murray and Sam Williamson
Illustrations by:	Lindsey Stirling
Date of Fieldwork:	3 rd February – 10 th March 2020
Date of Report:	27 th March 2020
OASIS No.:	aocarcha1-388745 (3)

This document has been prepared in accordance with AOC standard operating procedures.

Authors: P. Glew, C. Murray & S. Williamson Date: 27th March 2020

Approved by: Mary Peteranna Date: 27th March 2020

Report Stage: Draft 1 Date: 27th March 2020

Enquiries to: AOC Archaeology Group
The Old Estate Office
Rosehaugh Estate
Avoch
IV9 8RF

Mob. 07972 259255
Tel. 01463 819841
E-mail inverness@aocarchaeology.com



Contents

	Page
List of Figures	4
List of Plates	4
List of Appendices	4
Abstract	5
1.0 Introduction	6
2.0 Project Background	6
3.0 Objectives	11
4.0 Methodology	11
5.0 Results	12
6.0 Conclusions and Recommendations	17
7.0 References	18

List of Figures

Figure 1: Site Location Map

List of Plates

Plate 1: A typical soil profile (BTT4006)
 Plate 2: A typical soil profile (BTT4047)
 Plate 3: A typical trial pit (BTT4025)
 Plate 4: A typical trial pit (BTT4029)
 Plate 5: Pre-condition of boundary wall
 Plate 6: Post-condition of boundary wall
 Plate 7: A typical hand pit (BTH4009)
 Plate 8: A typical hand pit (BTH4013)
 Plate 9: Post-removal of vegetation around BTB4002 position
 Plate 10: Post-removal of vegetation within access route to BTB4002 position

List of Appendices

Appendix 1 List of Monitored Trial Pits
 Appendix 2 List of Trial Pits Access Advised On
 Appendix 3 List of Monitored Hand Pits
 Appendix 4 List of Hand Pits Access Advised On
 Appendix 5 List of Monitored Boreholes
 Appendix 6 List of Boreholes Access Advised On
 Appendix 7 List of Site Photographs
 Appendix 8 Additional Plates (separate pdf)
 Appendix 9 List of Drawings (drawings prepared by Soil Engineering Ltd)

Abstract

This report details the findings of an archaeological watching brief for the dualling of the A9 trunk road between Pass of Birnam and Tay Crossing Ground Investigation.

The Ground Investigation programme comprised a proposed 70 boreholes, 49 trial pits and 16 hand pits. Access surveys were carried out in advance of each ground investigation to ensure that there was no inadvertent impact to heritage assets during mobilisation of plant and personnel to each position.

Fieldwork was carried out between 3rd February and 10th March 2020. Excavation of 48 trial pits, 16 hand pits, and vegetation clearance to facilitate access to one borehole position were carried out under archaeological monitoring by the Archaeological Clerk of Works, as required by Transport Scotland. No archaeological remains were uncovered or impacted upon during the works.

1.0 Introduction

- 1.1 A programme of archaeological monitoring was undertaken on behalf of Soil Engineering Geoservices Limited (henceforth referred to as Soil Engineering) for Transport Scotland as part of the A9 Dualling Pass of Birnam to Tay Crossing, Supplementary Ground Investigation, as per the *Environmental Report* ([Jacobs 2019](#)) and the *Multi-Supplier Framework Agreement* ([Transport Scotland 2019](#), particularly Schedule 2, Schedule 5 and Appendix 1). The requirement arose as the corridor in which the Ground Investigation works were to be carried out is known to be rich in archaeological and historical remains, and thus there was high potential for the survival of buried archaeological deposits.
- 1.2 The site lies within the administrative area of Perth and Kinross Heritage Trust (PKHT). The requirement of the archaeological watching brief was specified in keeping with the policies outlined in *Scottish Planning Policy* ([2014](#)) and *Planning Advice Note (PAN) 2/2011 Planning and Archaeology* ([2011](#)) in order to record the extent and significance of any archaeological remains which may be present within the development area.
- 1.3 Archaeological monitoring was carried out by an Archaeological Clerk of Works (henceforth referred to as the ACoW) between 3rd February and 10th March, as per the *Written Scheme of Investigation* ([Maclver & Williamson 2020](#)). A total of 48 trial pits (referred to through the text by a unique identifying number preceded by the initialism BTT – Birnam Tay Trial pit) and 16 hand pits (referred to through the text by a unique identifying number preceded by the initialism BTH – Birnam Tay Hand pit) were excavated. The trial pits and hand pits were excavated by Soil Engineering, all of which were excavated under archaeological supervision. Access to each trial pit, hand pit and the 70 boreholes (referred to through the text by a unique identifying number preceded by the initialism BTB – Birnam Tay Borehole) was advised on in advance of works. No archaeological remains or artefacts were uncovered, and no cultural heritage assets were impacted upon by the works.

2.0 Project Background

2.1 Project Background Information

- 2.1.1 The A9 is the main north-south trunk road between Perth and Inverness and beyond. It is vital to the economy and communities of the north of Scotland. Dualling the A9 has been identified by the Scottish Government as a priority trunk road intervention and represents one of the largest infrastructure projects in Scotland's history.
- 2.1.2 The A9 Dualling Programme has been split into three sections (northern, central and southern). This document has been prepared for Project 2: Pass of Birnam to Tay Crossing of the southern section. It reports on information relating to Supplementary GI works undertaken between the Pass of Birnam and the Tay Crossing located between OS NGR 305555E 739476N and 300527E 744664N, the indicative location of which is shown on **Figure 1**.
- 2.1.3 Project 2: Pass of Birnam to Tay Crossing includes 70 boreholes, 49 trial pits and 16 hand pits which were proposed for the Supplementary GI works as per Appendix 1 of the *Environmental Report* ([Jacobs 2019](#)).
- 2.1.4 The objectives of the GI works were:
 - to provide a sufficient level of geotechnical information (particularly at proposed critical earthwork sections and proposed structures) on the underlying soils and bedrock, groundwater regimes, the presence of quarrying and level of contamination along the proposed Pass of Birnam to Tay Crossing route corridor, to facilitate the specimen design;

- to provide a sufficient level of geoenvironmental information to allow environmental impacts to be assessed and mitigated.

2.1.5 Archaeological monitoring was required on all trial pits and hand pits, and for 19 boreholes if additional ground-breaking works was required (see 2.2.4). Access to all borehole positions required approval by the ACoW, who carried out a walkover survey of the proposed routes in advance of works to establish their suitability.

2.2 Cultural Heritage Background Information (from Jacobs 2019)

2.2.1 Analysis of the cultural heritage resource for this section of the A9 Dualling can be found in the *Environmental Report* ([Jacobs 2019](#)). An excerpt from this is summarised below (2.2.2).

2.2.2 **Project 2.** All Supplementary GI works not identified within Table 1 are located within Historic Landscape Types ranging between Low to High in value. As per Appendix 1 ([Transport Scotland 2019](#)), all GI works within these landscapes had the potential to encounter as-yet-unknown archaeology. As a result, all trial pits and hand pits, and a number of boreholes, were subject to archaeological monitoring where groundworks took place.

Table 1: Known Cultural Heritage Assets within 50m of Supplementary GI works (Project 2) (Transport Scotland 2019, GI proximity sourced from Appendix 1)

Site Name	Asset No.*	Designation	Asset Value	GI works within 50m (Distance and Orientation from GI)
*Full details of Cultural Heritage Assets within 50m of GI works are listed in Appendix 1 (Detailed Environmental Constraints)				
Archaeological Remains				
Dalpowie Lodge (site of)	5	Non-designated	Medium	BTT4000 (approx. 22m east)
Dunkeld to Inverness Military Road	192	Non-designated	Medium	BTB4065 (approx. 22m to north-east), BTB4048 (approx. 4m east)
Coupar Angus to Amurlee Military Road	101	Non-designated	Low	BTB4037 (approx. 15m to north), BTB4038 (approx. 16m to north)
Birnam Milestone	800	Non-designated	Low	BTB4021 (approx. 32m north-east)
Historic Buildings				
Dunkeld and Birnam Station, including Footbridge	26	Category A Listed Building	High	BTB4023 (approx. 12m north-west), BTB2024 (approx. 42m south-west)
Terrace Block, Gladstone Terrace, Birnam	25	Category C Listed Building	Medium	BTB4022 (approx. 50m north-east)
Dunsville	27	Category C Listed Building	Medium	BTB4022 (approx. 45m north-east), BTT4026 (approx. 45m north-east),
Craigielea	28	Category C Listed Building	Medium	BTB4022 (approx. 50m north), BTT4026 (approx. 43m north-east)
Merryburn Hotel, Station Road, Birnam	32	Category C Listed Building	Medium	BTB4025 (approx. 32m north-west), BTT4028 (approx. 33m north-east)
1 Birnam Terrace, Birnam	37	Category C Listed Building	Medium	BTB4025 (approx. 42m north), BTT4028 (approx. 44m north-east)
2, 3 Birnam Terrace, Birnam	36	Category C Listed Building	Medium	BTB4025 (approx. 38m north), BTT4028 (approx. 46m north-east)
4, 5 Birnam Terrace, Birnam	35	Category C Listed Building	Medium	BTB4025 (approx. 40m north)
6, 7 Birnam Terrace, Birnam	34	Category C Listed Building	Medium	BTB4025 (approx. 43m north-east)
8, 9 Birnam Terrace, Birnam	31	Category C Listed Building	Medium	BTB4025 (approx. 45m north-east)
1 Ladeside Cottage, Inver	79	Category C Listed Building	Medium	BTB4036 (approx. 48m west)
Craigview Cottage, Inver	91	Category C Listed Building	Medium	BTB4039 (approx. 50m south-west)
Hermitage Tunnel	89	Non-designated	Medium	BTB4042 (approx. 5m east)
Farnyhaugh Military Bridge	189	Non-designated	Medium	BTB4048 (approx. 40m north)
Birnam Conservation Area	NA	Conservation Area	High	BTB4021 (approx. 22m west), BTB4022 (approx. 50m northeast), BTB4023 (on-location), BTB4024 (approx. 15m north-west and south), BTB4025 (approx. 20m north and

Site Name	Asset No.*	Designation	Asset Value	GI works within 50m (Distance and Orientation from GI)
				west), BTB4026 (on-location), BTT4026 (on-location), BTB4027 (approx. 25m north-east), BTT4028 (on-location)
Historic Landscapes				
Murthly Castle Garden and Designed Landscape	NA	Inventory Garden and Designed Landscape	High	BTB4000 (on-location), BTB4001 (on-location), BTB4002 (on- location), BTB4003 (on- location), BTB4004 (on-location), BTB4005 (on- location), BTB4006 (on- location), BTB4007 (on-location), BTB4008 (on- location); BTB4009 (approx. 45m south-east), BTB4010, (approx. 43m south-east), BTB4012 (approx. 17m north-east), BTB4013 (on- location), BTB4015 (on-location), BTB4015 (approx. 32m east), BTB4016 (on- location), BTB4017 (approx. 47m east), BTB4018 (on-location), BTB4019 (on-location), BTB4020 (approx. 50m north-east); BTT4000 (on-location), BTT4001 (on-location), BTT4002 (on-location), BTT4003 (on-location), BTT4004 (on-location), BTT4005 (on-location), BTT4006 (on-location), BTT4007 (on-location), BTT4008 (on-location), BTT4009 (on-location), BTT4010 (on-location), BTT4011 (on-location), BTT4012 (on-location), BTT4013 (on-location), BTT4014 (on-location), BTT4015 (on-location), BTT4016 (on-location), BTT4017 (on-location), BTT4018 (on-location), BTT4019 (on-location), BTT4020 (approx.. 10m south-east), BTT4021 (on-location), BTT4022 (approx. 4m east), BTT4023 (on-location); BTH4000 (on-location), BTH4001 (on-location), BTH4003 (on-location)
17 th to 19 th Century Rectilinear Fields and Farms	HLT1	Non-designated	Low	Various†
Managed Woodland	HLT2	Non-designated	Low	Various†
19 th Century to Present Coniferous Plantation	HLT3	Non-designated	Negligible	Various†
19 th Century to Present Urban Area	HLT4	Non-designated	Negligible	Various†
18 th to 19 th Century Industrial Planned Village	HLT5	Non-designated	Low	Various†
Recreation Area	HLT6	Non-designated	Low	Various†
Medieval Village	HLT7	Non-designated	Medium	Various†
Transport	HLT15	Non-designated	Negligible	Various†
Freshwater Area	HLT17	Non-designated	Negligible	Various†

† all entries with this symbol refer to GI works situated within an Historic Landscape with potential for encountering unidentified cultural heritage assets. As per Schedules 2, 5 and Appendix 1 (Transport Scotland 2019), these required archaeological works in the form of access surveys and/or watching brief as described in 2.2.4

2.2.3 Mitigation Measures: Pass of Birnam to Tay Crossing (as per [Jacobs 2019](#) and [Transport Scotland 2019](#))

In order to reduce potential impacts on the cultural heritage assets outlined in Table 1 and further identified in Appendix 1 ([Transport Scotland 2019](#)), the following measures were required:

- ACoW to advise on suitability of access routes for all Supplementary GI borehole, trial pit and hand pit locations, as identified in Appendix 1 ([Transport Scotland 2019](#)).

- Provide Archaeological Watching Brief in accordance with standards and guidance set out by the Chartered Institute for Archaeologists (CIfA) for the Supplementary GI borehole, trial pit and hand pits as identified in Appendix 1 ([Transport Scotland 2019](#)).
- For the Supplementary GI works within 50m of cultural heritage assets as identified in Appendix 1, the GI Contractor shall ensure that ground disturbance is minimised as far as practicable when access routes are agreed. Any ground disturbed whilst taking access shall be returned to its original state.
- The Contractor was instructed to prepare a Vibration Management Plan prior to carrying works out on borehole BTB4023 ([Transport Scotland 2019](#)).

2.2.4 Summary of boreholes, trial pits and hand pits which required ACoW work derived from Appendix 1 ([Transport Scotland 2019](#)) provided by Soil Engineering:

Boreholes (ACoW to advise on access in advance of works) (70 BH)

BTB4000 – BTB4069

Boreholes (ACoW to monitor ground-breaking works) (19 BH)

BTB4000 – BTB4008, BTB4013, BTB4016, BTB4018 – BTB4019, BTB4021 – BTB4026

Trial pits (ACoW to advise on access and monitor ground-breaking works) (49 TP)

BTT4000 – BTT4048

Hand pits (ACoW to advise on access and monitor ground-breaking works) (16 HP)

BTH4000 – BTH4015

2.3 Geology and Topography

2.3.1 The published geology indicates the superficial deposits underlying the southern section of the existing A9 predominantly comprise Alluvium and River Terrace deposits associated with the River Tay adjacent to the A9, and Glaciofluvial deposits. Differentiation between these superficial deposits is difficult due to the similarity in material descriptions. The available information indicates that superficial material throughout these sections primarily comprises sand and gravel with density ranging from loose to very dense. The material is often described as silty, and occasionally as clayey, with cobble and boulder content ([Transport Scotland 2019](#)).

2.3.2 The route of the existing A9 through this section encompasses varied topography and surface conditions including valley floor with open flat land, rock exposure along valley sides, forestry, and river crossings. Elevation differences therefore also vary along the route as the road alternates between valley floor and valley sides ([Transport Scotland 2019](#)).

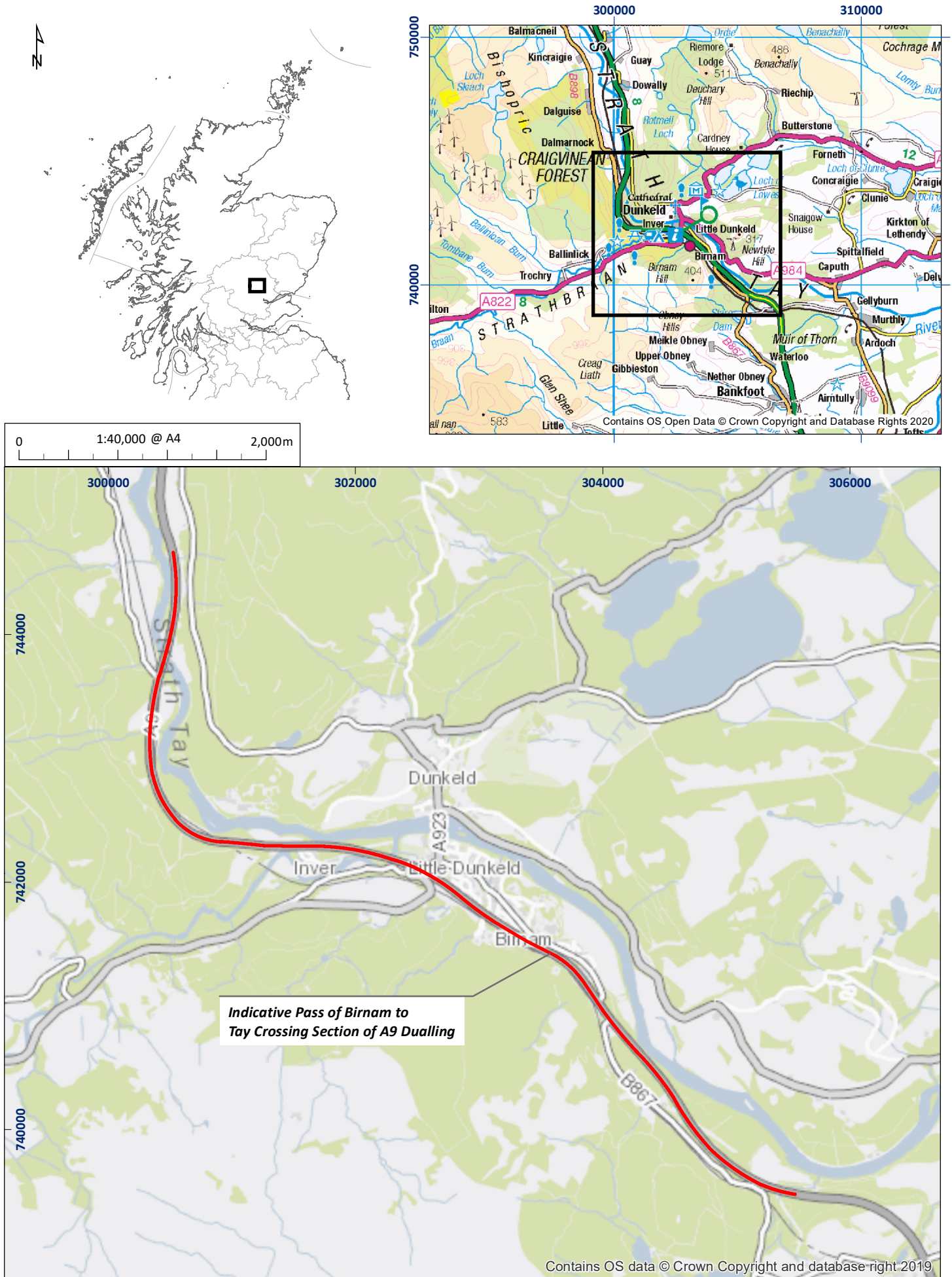


Figure 1: Site location plan

04/70472/DSR/01/01

3.0 Aims and Objectives

3.1 Project Aims

3.1.1 The aims of the archaeological works were:

- To undertake assessment of access route to boreholes, trial pits and hand pits as identified in the *Environmental Report* ([Jacobs 2019](#)) and the *Multi-Supplier Framework Agreement's* Schedules 2 and 5 and Appendix 1 ([Transport Scotland 2019](#)).
- To undertake an archaeological watching brief during GI works at locations as specified in Appendix 1/Schedule 2 ([Transport Scotland 2019](#)) to evaluate the underlying deposits for the presence/absence of any archaeological remains.
- To undertake an appropriate level of recording of any significant archaeological remains encountered in order to determine the character, extent and significance of any archaeological deposits uncovered.
- To mitigate any adverse impacts arising from the ground investigation (henceforth referred to as GI) activities.
- On completion of the watching brief, to submit a data structure report to the client.

3.2 Working Principles and Practice

3.2.1 The following mitigation was implemented, as required, to reduce impacts upon cultural heritage assets:

- No GI work (including access route formation, tracking or equipment set down) was to be conducted within the designated buffer zone around any Statutory Protected Assets.
- Finalised GI locations were screened by the ACoW to identify any requirement for micro-siting.
- Finalised access routes were screened by the ACoW to identify the potential impacts and any requirement for mitigation.
- The client's representative was to be contacted in the event of discovery of archaeological remains.
- The GI Contractor was to implement any recommendations provided following consultation with the Engineer.
- Preservation by record of any archaeological remains unearthed by the GI works.

4.0 Methodology

4.1 The methodology expressed below is in keeping with the methodology set out in the *Written Scheme of Investigation* ([MacIver & Williamson 2020](#)). All work was carried out as per the requirements of the *Multi-Supplier Framework Agreement* ([Transport Scotland 2019](#)) and the *Environmental Report* ([Jacobs 2019](#)), and in accordance with *Archaeological Planning Advice* ([Perth and Kinross Council 2019](#)), *Scottish Planning Policy* ([2014](#)) and *PAN 2/2011 Planning and Archaeology* ([2011](#)).

4.2 Access surveys were undertaken in advance of mobilisation of plant and personnel to the positions of 70 boreholes, 48 trial pits and 16 hand pits, as identified in *Written Scheme of Investigation*. The access surveys were undertaken to advise and agree upon appropriate

access to positions situated in areas where cultural heritage mitigation may have been required. Access routes were agreed upon with Soil Engineering to avoid impacts to cultural heritage assets.

- 4.3 The excavation of trial pits during the GI was carried out by Soil Engineering using a mechanical excavator fitted with a flat-bladed bucket under constant archaeological supervision by the ACoW from AOC Archaeology. Excavation was undertaken in stages until either the first archaeological horizon or undisturbed natural deposits were encountered or until the goal depth required by Soil Engineering was achieved. The watching brief applied to all trial pits not within the road corridor and verges.
- 4.4 A brief written record of all trial pits, including layout, depth of topsoil and descriptions of general stratigraphy, was made by the ACoW. No archaeological features were identified. As this is an archaeological report all soil descriptions are based on an archaeological standard recording methodology and should not be used for any engineering or design purposes.
- 4.5 The locations of the trial pits were recorded by a Soil Engineering engineer using a hand-held GPS. AOC Archaeology used high resolution digital photography to record the upper layers of the trial pits, where archaeological features were potentially present. Further logging and photographs were taken by Soil Engineering upon completion of the trial pit.
- 4.6 All work was carried out in line with the following standards and guidance of the ClfA
 - *Code of Conduct (2019)*;
 - *Standard and guidance for an archaeological watching brief (2014)*

5.0 Results

5.1 Summary

- 5.1.1 The watching brief was carried out between 3rd February and 10th March 2020 in typical spring conditions, with varying mild and cold weather and occasional showers of rain, sleet and snow. Archaeological visibility was generally good, and the GI works progressed unhindered. In total, 48 trial pits and 16 hand pits were monitored during the Supplementary GI works and access routes for each trial pit, hand pit and 70 boreholes were advised on in advance of works. 19 boreholes were specified as requiring archaeological watching brief should ground-breaking works associated with access be required. This was only required at a single borehole position, BTB4002 and no archaeological remains were uncovered.
- 5.1.2 In general, topsoil comprised a greyish-brown sandy or silty loam between 0.1-0.7m deep. The natural subsoil consisted of mostly loose to compact light or mid brownish-orange gravelly sand with occasional small to large sized rounded stones (**Plates 1-2**). Made ground was frequently encountered. Some variations in colour and composition of the subsoil were observed across the site.

5.2 Trial Pits

- 5.2.1 No archaeological features or deposits were recorded in any of the 49 excavated trial pits. A full list of the trial pits monitored is in **Appendix 1**, where further detail on the individual trial pits can be found.
- 5.2.2 The trial pits measured between 2.0-5.5m long and between 0.65-2.8m wide (**Plates 1-4**). The trial pits were extended to a depth of 4.5m after completion of archaeological excavation unless groundwater, collapse or other unavoidable factors prevented further excavation.

5.2.3 BTT4008 - BTT4010 required vegetation clearance prior to excavation, which took place under archaeological monitoring. No archaeological features were identified or impacted during clearance.

5.2.4 A full list of trial pits that were advised on for access can be found in **Appendix 2**. Access to BTT4030 required archaeological input from the ACoW since the only access possible was over a degraded boundary wall, a heritage asset which the ACoW determined was of negligible value. The ACoW advised the machine operator to move carefully over the boundary wall and ensured access and egress was limited to one small section of the wall. Pre-condition and post-condition photographs were taken (**Plates 5-6**). Access to BTT4042 was made down a steep slope and ground-breaking was required to reduce the gradient. Excavation revealed a made-ground deposit and the subsoil was not encountered; no archaeological features were identified.

5.3 *Hand Pits*

5.3.1 No archaeological features or deposits were recorded in any of the 16 excavated hand pits. Further details and the full list of monitored hand pits is in **Appendix 3**.

5.3.2 The hand pits measured generally 0.5m in diameter and were extended to a depth of 1.2m after completion of archaeological monitoring unless unavoidable factors prevented further excavation (**Plates 7-8**).

5.3.3 A full list of hand pits that were advised on for access can be found in **Appendix 4**. No hand pit locations required any mitigation or change to the access as no upstanding archaeological remains obstructed access or positions.

5.4 *Boreholes*

5.4.1 An archaeological watching brief was required for 19 boreholes as specified in Appendix 1 ([Transport Scotland 2019](#)) should ground-breaking works be required to facilitate plant access to the borehole position. Of these, only a single borehole, BTB4002, required minimal vegetation clearance to facilitate access (**Plates 9-10**). This was carried out under supervision of the ACoW. No archaeological remains were identified. No other boreholes required any mitigation or change to the access as no upstanding archaeological remains or vegetation obstructions were noted in the vicinity. **Appendix 5** details the full list of monitored boreholes, where further detail on the watching brief works can be found.

5.4.2 A full list of boreholes that were advised on for access can be found in **Appendix 6**. Boreholes BTB4028, BTB4029, BTB4052 and BTB4053 were situated close to a drystone wall; however the Soil Engineering field engineer confirmed the drystone wall would not be disturbed during works. BTB4023 was situated in the Dunkeld train station car park and required a Vibration Management Plan to be put in place by the client before works.



Plate 1: A typical soil profile (BTT4006)



Plate 2: A typical soil profile (BTT4047)



Plate 3: A typical trial pit (BTT4025)



Plate 4: A typical trial pit (BTT4029)



Plate 5: Pre-condition of degraded boundary wall



Plate 6: Post-condition of degraded boundary wall



Plate 7: A typical hand pit (BTH4009)



Plate 8: A typical hand pit (BTH4013)



Plate 9: Post-removal of vegetation around BTB4002 position



Plate 10: Post-removal of vegetation within access route to BTB4002 position

6.0 Conclusions and Recommendations

- 6.1 No archaeological features or deposits were observed during fieldwork. The GI works were situated along a 7.3km corridor of land, with varied environmental conditions, and only represent a small percentage of the total area that could be impacted upon by future development. The *Environmental Report* ([Jacobs 2019](#)) has indicated the potential for archaeological remains in the area. None of these were encountered during the GI works, however future development may impact upon them.

7.0 References

Chartered Institute for Archaeologists (CIfA). 2014. *Standard and guidance for an archaeological watching brief*.

Chartered Institute for Archaeologists (CIfA). 2019. *Code of Conduct*.

Jacobs 2019. *A9 Dualling Programme: Pass of Birnam to Tay Crossing: Supplementary Ground Investigation Environmental Report*.

Perth and Kinross Council. 2019. *Archaeological Planning Advice*.

Scottish Government. 2011. *Planning Advice Note (PAN) 2/2011 Planning and Archaeology*.

Scottish Government. 2014. *Scottish Planning Policy*.

Williamson, S. & MacIver, C. 2020. *TE8258 A9 Dualling Programme: Pass of Birnam to Tay Crossing, Supplementary Ground Investigation, Archaeological Watching Brief for Ground Investigations, Written Scheme of Investigation*. Unpublished AOC Archaeology report.

Appendix 1 List of Monitored Trial Pits

Trial Pit No.	Dimensions (l x b x d) (m) and alignment	Topsoil Depth (m)	General Stratigraphy Notes	Co-ordinates	Archaeological Findings	Notes
BTT4000	4.2 x 1.0 x 4.5 NE-SW	0.15	Dark blackish-brown loamy detritus over mid orangey-brown gravelly sandy subsoil.	305059 739787	None.	Goal depth achieved.
BTT4001	4.4 x 1.3 x 4.5 N-S	0.15	Dark blackish-brown loamy detritus over mid orangey-brown gravelly sandy subsoil.	305007 739781	None.	Goal depth achieved.
BTT4002	3.3 x 0.9 x 4.5 NE-SW	0.3	Dark brown loamy topsoil with very frequent medium sized rounded stones over mid greyish brown sandy gravel with very frequent medium sized rounded stones and boulders.	304987 739772	None.	Goal depth achieved.
BTT4003	4.9 x 1.2 x 4.5 NW-SE	0.1	Dark greyish-brown silty loam topsoil over mid orangey-brown sandy silt subsoil with frequent medium sized rounded stones.	304854 739921	None.	Goal depth achieved.
BTT4004	4.8 x 1.0 x 4.5 E-W	0.2	Mid greyish- brown loam topsoil over dark brownish-orangey gravelly silt subsoil with frequent medium sized rounded stones.	304668 740056	None.	Goal depth achieved.
BTT4005	4.8 x 0.9 x 4.5 NW-SE	0.1	Dark brownish-black loamy detritus over mid brownish-orange silty sand subsoil with frequent medium sized rounded stones.	304590 740156	None.	Goal depth achieved.
BTT4006	5.4 x 1.6 x 4.5 E-W	0.2	Dark brownish-grey silty loam topsoil over 0.4m of yellowish-brown loamy sand, over light brownish-yellow sand subsoil with some small and medium sized rounded stones.	304534 740248	None.	Goal depth achieved.
BTT4007	5.3 x 1.6 x 4.5 WSW-ESE	0.5	Greyish-brown loamy sand topsoil with occasional medium sized rounded stones over yellowish-brown sand subsoil with some medium sized rounded stones.	304557 740260	None.	Goal depth achieved.
BTT4008	4.2 x 0.9 x 4.5 NW-SE	0.25	Dark brownish-black loamy detritus over dark brownish-orange gravelly sand subsoil.	304413 740427	None.	Vegetation clearance around the trial pit location required prior to excavation. Goal depth achieved.

Trial Pit No.	Dimensions (l x b x d) (m) and alignment	Topsoil Depth (m)	General Stratigraphy Notes	Co-ordinates	Archaeological Findings	Notes
BTT4009	5.5 x 0.9 x 4.1 N-S	0.1	Dark brownish-black loamy detritus over dark brownish-orange gravelly sand subsoil.	304372 740486	None.	Vegetation clearance around the trial pit location required prior to excavation. Terminated at 4.1m due to sides collapsing.
BTT4010	5.3 x 0.9 x 4 N-S	0.15	Mid greyish-brown silty loam topsoil over mid orangey-brown sandy gravel subsoil with frequent medium sized rounded stones.	304320 740547	None.	Vegetation clearance around the trial pit location required prior to excavation. Terminated at 4m due to sides collapsing.
BTT4011	N/A	N/A	N/A	304237 740729	N/A	Trial pit cancelled.
BTT4012	4.2 x 1.0 x 4.1 E-W	0.1	Dark brown gravelly silty sand topsoil over orangey brown gravelly silty sand subsoil.	304156 740666	None.	Terminated at 4.1m due to sides collapsing.
BTT4013	5.1 x 0.8 x 4.5 N-S	0.2	Dark greyish-brown soily loam topsoil over dark orangey brown silty sand subsoil.	304099 740669	None.	Goal depth achieved.
BTT4014	4.9 x 1.4 x 3.7 NE-SW	0.1	Dark brownish-black loamy detritus over mid yellowish orange gravelly sand subsoil with medium sized rounded stones.	304111 740735	None.	Terminated at 3.7m due to sides collapsing.
BTT4015	3.7 x 1.5 x 4.5 E-W	0.15	Heavily bioturbated detritus over dark yellowy-orange gravelly sand subsoil with frequent medium sized subrounded stones.	304084 740727	None.	Trial pit moved 5m S from original location due to health and safety concerns. Goal depth achieved.
BTT4016	2.7 x 0.75 x 0.5 NE-SW	N/A	0.5m of made ground over tarmac.	304008 740738	None.	Terminated at 0.5m due to solid layer of tarmac.
BTT4017	4.8 x 1.1 x 2.9 NE-SW	0.7	Mid orangey-brown silty loam topsoil over made ground.	304039 740774	None.	Terminated at 2.9m due to water table hit and collapsing sides. Subsoil not encountered.
BTT4017a	4.4 x 1.1 x 3.8 SSW – NNE	N/A	Mid greyish-brown silty loam topsoil over 3.6m of made ground over brownish-orange gravelly sand subsoil.	<i>Soil Engineering to provide</i>	None.	Terminated at 3.8m due to sides collapsing.
BTT4018	3.3 x 0.65 x 0.4 NE-SW	0.15	Light greyish-brown loamy topsoil over 0.25m of made ground (redeposited light yellowy-orange silty sand) over tarmac.	304001 740774	None.	Terminated at 0.4m due to tarmac.
BTT4019	5.2 x 0.9 x 4.5 N-S	0.15	Dark brown gravelly sand and silt topsoil over made ground.	304031 740817	None.	Goal depth achieved.
BTT4020	3.1 x 0.65 x 2.5 NE - SW	0.2	Light greyish-brown loamy topsoil over 0.3m of made ground (mid yellowy orange gravelly silt w/ frequent gravel inclusions) over light orangey-yellow silty sandy subsoil.	303996 740841	None.	Terminated at 2.5m due to sides collapsing.

Trial Pit No.	Dimensions (l x b x d) (m) and alignment	Topsoil Depth (m)	General Stratigraphy Notes	Co-ordinates	Archaeological Findings	Notes
BTT4021	3.7 x 1.9 x 1.0 NW-SE	0.2	Mid brown silty loam topsoil over mid orangey-Yellow sand subsoil.	304040 741145	None.	Terminated at 1m due to the presence of unmarked services. Relocated 1m into field and dug again under new name BTT4021a.
BTT4021a	3.7 x 1.9 x 4.5 NW-SE	0.2	Mid brown silty loam topsoil over mid orangey-yellow sand subsoil.	304040 741145	None.	Goal depth achieved.
BTT4022	3.2 x 0.8 x 2.6 NE-SW	0.15	Mid brown silty loam topsoil over made ground.	303993 741135	None.	Terminated at 2.6m due to sides collapsing. Natural deposits not reached. Photos not taken at full depth due to safety concerns.
BTT4023	4.2 x 1.9 x 4.5 NW-SE	0.2	Mid brown silty loam topsoil over mid orangey-yellow sand.	303992 741219	None.	Goal depth achieved.
BTT4024	2.8 x 2.4 x 3.7 NW-SE	0.5	Dark brownish-grey silty loam topsoil with some rounded and angular stones and occasional modern refuse over light brownish-yellow loamy sand subsoil with small to large sized rounded stones.	303684 741405	Archaeologically insignificant stone-filled field drain on west side of trial pit.	Trial pit widened in order to avoid impacting field drain. Excavation terminated at 3.7m due to maximum reach of machine.
BTT4025	4.3 x 2.8 x 3.7 NW-SE	0.2	Dark brownish-grey sandy loam topsoil over 0.15m of light brownish yellow loamy sand with some small sized rounded and angular stones, possibly redeposited subsoil during construction of nearby drain and only visible on the NE-facing section, over 0.25m of light greyish-brown loamy sand with rare charcoal flecks, possibly buried topsoil horizon, over light brownish-yellow sand subsoil with some small to large sized rounded and angular stones.	303680 741405	None.	Excavation terminated at 3.7m due to maximum reach of machine.
BTT4026	3.7 x 0.7 x 4.5 E-W	N/A	Made ground to a depth of 0.5m over light brownish-yellow gravelly silty sand subsoil.	303204 741658	None.	Goal depth achieved.
BTT4027	N/A	N/A	N/A	303171 741688	N/A	Cancelled.
BTT4028	N/A	N/A	N/A	303137 741711	N/A	Cancelled.

Trial Pit No.	Dimensions (l x b x d) (m) and alignment	Topsoil Depth (m)	General Stratigraphy Notes	Co-ordinates	Archaeological Findings	Notes
BTT4029	3.8 x 1.5 x 0.27 E-W	0.27	Greyish-brown sandy loam topsoil over compact light brownish-yellow sand subsoil with occasional medium sized rounded stones.	302475 742153	None.	Terminated at 3.5m due to machine unable to excavate large boulders at the base of the trial pit.
BTT4030	2.8 x 0.7 x 3 E-W	0.15	Mid greyish-brown silty loam topsoil over mid yellowish-orange silty sand subsoil.	302324 742084	None.	Terminated at 2m due to machine breakdown. Re-excavated to 3m on 10/3/20.
BTT4031	3.4 x 1.4 x 2.4 NW-SE	0.4	Greyish-brown silty loam topsoil with some small sized rounded stones over yellowish-brown loamy sand subsoil.	302167 742239	None.	Terminated at 2.4m due to water table hit and sides collapsing. BTT4031a excavated in an attempt to achieve full depth.
BTT4031a	3.0 x 1.2 x 2.2 E-W	0.35	Greyish-brown silty loam topsoil with some small sized rounded stones over yellowish-brown loamy sand subsoil.	c.5m NNW of BTT4031	None.	Terminated at 2.2m due to water table hit and sides collapsing.
BTT4032	3.0 x 1.6 x 3.1 E-W	0.2	Greyish-brown silty loam topsoil with some small sized rounded stones over yellowish-brown loamy sand subsoil.	302056 742264	None.	Terminated at 3.1m due to water table hit and sides collapsing.
BTT4033	3.4 x 0.7 x 2.5 N-S	0.3	Dark greyish-brown silty loam topsoil over mid orangey-brown gravelly silty sand subsoil.	301932 742291	None.	Terminated at 2.5m due to sides collapsing.
BTT4034	3.5 x 2.0 x 3.9 NW-SE	0.35	Greyish-brown silty loam topsoil with some small to large sized rounded stones over yellowish-brown loamy sand subsoil.	301821 742306	None.	Terminated at 3.9m due to water table hit and sides collapsing.
BTT4035	4.2 x 1.3 x 4.0 SSE-NNW	0.25	Brownish-grey loamy sandy topsoil with some small sized rounded stones over light brownish-yellow sand subsoil with occasional small sized rounded and angular stones.	301743 742260	None.	Terminated at 4m due to water table hit.

Trial Pit No.	Dimensions (l x b x d) (m) and alignment	Topsoil Depth (m)	General Stratigraphy Notes	Co-ordinates	Archaeological Findings	Notes
BTT4036	4.0 x 1.4 x 2.2 N-S	0.1	Greyish-brown sandy loamy topsoil with occasional small sized rounded stones over 0.3m of light grey sandy silt comprising small to medium sized angular stones, possibly an old compound associated with nearby roads or buildings, over brownish-yellow sand subsoil with frequent rounded and angular stones.	301729 742192	None.	Terminated at 2.2m due to sides collapsing.
BTT4037	3.7 x 0.65 x 2.2 E-W	0.2	Mid greyish-brown loamy topsoil over made ground - light greyish-brown gravelly soil with very frequent large subrounded boulders.	301487 742296	None.	Terminated at 2.2m due to sides collapsing. Natural deposits not reached.
BTT4038	3.4 x 0.65 x 2.4 E-W	0.2	Mid greyish-brown loamy topsoil over made ground - light greyish-brown gravelly soil with very frequent large subrounded boulders.	301472 742296	None.	Terminated at 2.4m due to sides collapsing. Natural deposits not reached.
BTT4038a	4.2 x 0.7 x 2.2 E-W	0.2	Mid greyish-brown loamy topsoil over made ground - light greyish-brown gravelly soil with very frequent large subrounded boulders.	301472 742296	None.	Terminated at 2.2m due to sides collapsing. Natural deposits not reached.
BTT4039	N/A	N/A	N/A	301266 742346	N/A	Cancelled.
BTT4040	N/A	N/A	N/A	301202 742356	N/A	Cancelled.
BTT4041	4.0 x 1.5 x 4.5 N-S	0.2	Yellowish-brown loamy sand topsoil over loose light greyish-yellow sand subsoil with many large rounded stones.	300305 742820	None.	Goal depth achieved.
BTT4042	4.5 x 1.5 x 4.5 NW - SE	0.3	Light greyish-brown silty sandy topsoil with a few medium sized rounded stones over 0.5m of light yellowish-brown sand made ground, possibly from road/railway construction, with some medium sized rounded stones over brownish-yellow sand subsoil.	300360 743126	None.	Goal depth achieved. Part of the hillslope was excavated (10-20cm) for benching. This was monitored and recorded by the ACoW. Excavation revealed a made ground deposit, the subsoil was not encountered. No archaeological features were identified.

Trial Pit No.	Dimensions (l x b x d) (m) and alignment	Topsoil Depth (m)	General Stratigraphy Notes	Co-ordinates	Archaeological Findings	Notes
BTT4043	4.2 x 2.0 x 4.5 SE-NW	0.3	Dark brown loamy topsoil over mid orangey-brown gravelly silt subsoil.	300191 743261	None.	Goal depth achieved.
BTT4044	2.0 x 2.0 x 4.5 E-W	0.3	Dark brown loamy topsoil over mid orangey-brown gravelly silt subsoil.	300220 743333	None.	Goal depth achieved.
BTT4045	5.0 x 1.5 x 4.5 E-W	0.5	Light greyish-brown loamy topsoil over light orangey-yellow gravelly sand subsoil.	300274 743344	None.	Goal depth achieved.
BTT4046	3.7 x 2.0 x 4.2 NW-SE	0.5	Light greyish-brown loamy topsoil over light orangey-yellow gravelly sand subsoil.	300490 743365	None.	Terminated at 4.2m due to sides collapsing.
BTT4047	3.8 x 0.7 x 4.5 N-S	0.15	Dark greyish-brown loamy topsoil over 0.25m of made ground (crushed concrete), over 1m of made ground (light brownish grey sandy silt with some small sized rounded stones) over light orangey-brown silty sand subsoil with few medium sized rounded stones.	300538 744071	None.	Goal depth achieved.
BTT4048	3.8 x 1.6 x 4.3 N-S	0.3	Greyish-brown sandy loam topsoil over loose light brownish-yellow sandy gravel subsoil with frequent small sized rounded stones.	300484 744205	None.	Terminated at 4.3m due to maximum reach of the machine.

Appendix 2 List of Trial Pits Access Advised On

Trial Pit No.	Description of Access	Further Archaeological Input Required?
BTT4000	Trial pit position is situated in forestry. Access to be made from Murthly Castle access road and through forestry. No visible upstanding archaeology en route.	None.
BTT4001	Trial pit position is situated in forestry. Access to be made from Murthly Castle access road and through forestry. No visible upstanding archaeology en route.	None.
BTT4002	Trial pit position is situated on grass verge next to access road to Murthly Castle. Excavator to be positioned in road. No visible upstanding archaeological remains en route.	None.
BTT4003	Trial pit position is situated in forestry. Access to be made from Murthly Castle access road and through forestry. No visible upstanding archaeology en route.	None.
BTT4004	Trial pit position is situated in a forestry. Access to be made from track through forested area. No visible upstanding archaeology en route.	None.
BTT4005	Trial pit position is situated in forestry. Access to be made from track through forested area. No visible upstanding archaeology en route.	None.
BTT4006	Trial pit position is situated in forestry. Access is from BT4005 (off the B867 onto a small track proceeding through forest). No visible upstanding archaeology en route.	None.
BTT4007	Trial pit position is situated in forestry. Access is from BT4005 (off the B867 onto a small track proceeding through forest). No visible upstanding archaeology en route.	None.
BTT4008	Trial pit position is situated by the side of a track. Access is to be made along track and through cleared bushes. No visible upstanding archaeology en route.	None.
BTT4009	Trial pit position is situated in lightly forested area. Access from track is off-road through light forest. No visible upstanding archaeological remains en route	None.
BTT4010	Trial pit position is situated in lightly forested area. Access from track is off-road through light forest. No visible upstanding archaeological remains en route	None.
BTT4012	Trial pit position is situated in lightly forested area. Access from track is off-road through light forest. No visible upstanding archaeological remains en route	None.
BTT4013	Trial pit position is situated in lightly forested area. Access from track is off-road through light forest. No visible upstanding archaeological remains en route	None.
BTT4014	Trial pit position is situated in lightly forested area. Access from track is off-road through light forest. No visible upstanding archaeological remains en route	None.
BTT4015	Trial pit position is situated in lightly forested area. Access from track is off-road through light forest. No visible upstanding archaeological remains en route	None.
BTT4016	Trial pit position is situated on grass verge at side of B road. Access is directly from traffic management area. No visible upstanding archaeological remains en route.	None.
BTT4017	Trial pit position is situated in lightly forested area. Access from track is off-road through light forest. No visible upstanding archaeological remains en route	None.
BTT4017a	Trial pit position is situated in lightly forested area. Access from track is off-road through light forest. No visible upstanding archaeological remains en route	None.

Trial Pit No.	Description of Access	Further Archaeological Input Required?
BTT4018	Trial pit position is situated on grass verge at side of B road. Access is directly from traffic management area. No visible upstanding archaeological remains en route.	None.
BTT4019	Trial pit position is situated in lightly forested area. Access from track is off-road through light forest. No visible upstanding archaeological remains en route	None.
BTT4020	Trial pit position is situated on grass verge of cycle lane. Access is along cycle lane and onto verge. No visible upstanding archaeological remains en route.	None.
BTT4021	Trial pit position is situated at edge of field. Access to be made from track, keeping tight to edge of field to avoid high pressure gas main. No visible upstanding archaeology en route.	None.
BTT4022	Trial pit position is situated on grass verge of B road. Access to be made from farm track behind verge. No visible upstanding archaeology en route.	None.
BTT4023	Trial pit position is situated at edge of field. Access to be made from track, keeping tight to edge of field to avoid high pressure gas main. No visible upstanding archaeology en route.	None.
BTT4024	Trial pit position is situated in lightly forested area. Access to be made of Perth Road proceeding SE immediately behind housing through a lightly forested area. No visible upstanding archaeological remains en route	None.
BTT4025	Trial pit position is situated in lightly forested area. Access to be made of Perth Road proceeding SE immediately behind housing through a lightly forested area. No visible upstanding archaeological remains en route	None.
BTT4026	Trial pit position is situated in hard standing in industrial estate. Access is through gate from road and onto hard standing. No visible upstanding archaeology en route.	None.
BTT4029	Trial pit position is situated in a lightly wooded area. Access to be made off single track road adjacent to Craigvinean Medical Centre, proceeding west along footpath. No visible upstanding archaeology en route.	None.
BTT4030	Trial pit position is situated on the verge of B road. Access to be made directly from road. No visible upstanding archaeology en route.	Boundary wall runs along the side of the road. The wall is to be driven over. ACoW took pre-condition and post-condition photos of the wall.
BTT4031	Trial pit position is situated in an area of forestry. Access to be made off A9, through a gate and then east through forestry plantation. No visible upstanding archaeological remains en route	None.
BTT4031a	Trial pit position is situated in an area of forestry. Access to be made off A9, through a gate and then east through forestry plantation. No visible upstanding archaeological remains en route	None.
BTT4032	Trial pit position is situated in an area of forestry. Access to be made from BTT4031 through forestry plantation. No visible upstanding archaeological remains en route	None.
BTT4033	Trial pit position is situated on verge of A9. Access to be made off track. No visible upstanding archaeology en route.	None.
BTT4034	Trial pit position is situated in an area of light forest. Access to be made off the A9, through gate (same as BTT4031) then west through forestry plantation. No visible upstanding archaeological remains en route	None.

Trial Pit No.	Description of Access	Further Archaeological Input Required?
BTT4035	Trial pit position is situated in an area of light forest. Access to be made off the A9, through light forest and gate, proceeding along an unsurfaced track. No visible upstanding archaeological remains en route	None.
BTT4036	Trial pit position is situated in a cleared area of light forest. Access to be made off the A9, through light forest and gate, proceeding along an unsurfaced track. No visible upstanding archaeological remains en route	None.
BTT4037	Trial pit position is situated on grass verge of A9. Access to be made off A9 and along verge. No visible upstanding archaeological remains en route	None.
BTT4038	Trial pit position is situated on grass verge of A9. Access to be made directly from A9. No visible upstanding archaeological remains en route	None.
BTT4038a	Trial pit position is situated on grass verge of A9. Access to be made directly from A9. No visible upstanding archaeological remains en route	None.
BTT4041	Trial pit position is located in a grass-covered area adjacent to forestry laydown area. Access to be made from forestry track and through grass covered area. No visible upstanding archaeological remains en route	None.
BTT4042	Trial pit position is situated in an area of grass and bracken. Access to be made from A9 proceeding along the grass verge and down a steep slope. No visible upstanding archaeological remains en route.	Part of the hillslope was excavated (10-20cm) to reduce the gradient. This was monitored and recorded by the ACoW. Excavation revealed a made ground deposit, the subsoil was not encountered. No archaeological features were identified.
BTT4043	Trial pit position is situated in a field. Access to be made from farm track to the north of the position. No visible upstanding archaeological remains en route.	None.
BTT4044	Trial pit position is situated in a field. Access to be made from farm track to the north of the position. No visible upstanding archaeological remains en route.	None.
BTT4045	Trial pit position is situated in a field. Access to be made from farm track to the north of the position. No visible upstanding archaeological remains en route.	None.
BTT4046	Trial pit position is situated in field. Access to be made across field. No visible upstanding archaeology en route.	None.
BTT4047	Trial pit position is situated on verge of A9. Access to be made off A9 and along verge. No visible upstanding archaeology en route.	None.
BTT4048	Trial pit position is situated in a lightly wooded area. Access to be made from the A9 proceeding south along a single lane track. No visible upstanding archaeological remains en route.	None.

Appendix 3 List of Monitored Hand Pits

Hand Pit No.	Dimensions (l x b x d) (m) and alignment	Topsoil Depth (m)	General Stratigraphy Notes	Co-ordinates	Archaeology	Notes
BTH4000	0.7 x 0.5 x 1.2	0.2	Mid blackish-brown silty loam topsoil over light brown sandy gravel subsoil.	304077 740975	None.	Goal depth achieved.
BTH4001	0.8 x 0.4 x 1.2	0.3	Dark greyish-brown silty loam topsoil over dark greyish-brown gravelly silty loam subsoil.	304076 740986	None.	Goal depth achieved.
BTH4002	0.6 x 0.3 x 1.2	0.4	Dark greyish-brown silty loam topsoil over mid orangey-brown silty loam subsoil.	304087 740990	None.	Goal depth achieved.
BTH4003	0.5 x 0.5 x 1.2	0.2	Dark greyish- brown silty loam topsoil over light brownish-grey loamy silt subsoil.	303865 741213	None.	Goal depth achieved.
BTH4004	0.8 x 0.5 x 1.2	0.3	Dark greyish-brown silty loam topsoil over dark orangey-brown silty loam interface over mid orangey-brown loamy silt subsoil.	302695 741805	None.	Goal depth achieved.
BTH4005	0.5 x 0.5 x 1.2	0.2	Dark greyish-brown loamy silt topsoil over mid brownish-orange sandy silt subsoil.	302691 741804	None.	Goal depth achieved.
BTH4006	0.6 x 0.3 x 1.2 E-W	0.1	Dark brown loam topsoil with over brownish-yellow loamy sand made ground with some medium sized rounded and angular stones.	302429 742049	None.	Moved <1m W due to drain. Goal depth achieved. Subsoil was not encountered.
BTH4007	0.5 x 0.5 x 1.2	0.1	Brownish-grey sandy loam topsoil over 0.7m of friable brownish-orange made ground comprising containing frequent small sized angular stones, over 0.4m of yellowish-brown loamy sand, possibly buried topsoil.	302427 742052	None.	Goal depth achieved. Subsoil was not encountered.
BTH4008	0.5 x 0.5 x 1.2	0.28	Brownish-grey sandy loam topsoil over 0.72m of friable grey made ground comprising containing frequent small sized angular stones, over 0.4m of yellowish-brown loamy sand, possibly buried topsoil.	302409 742055	None.	Goal depth achieved. Subsoil was not encountered.
BTH4009	0.5 x 0.5 x 1.2	0.35	Dark brownish-grey sandy loam topsoil with some medium sized rounded stones over yellowish-brown loamy sand subsoil.	302366 742064	None.	Goal depth achieved.

Hand Pit No.	Dimensions (l x b x d) (m) and alignment	Topsoil Depth (m)	General Stratigraphy Notes	Co-ordinates	Archaeology	Notes
BTH4010	0.5 x 0.5 x 1.2	N/A	0.05m of tarmac over made ground comprising loose small sized stones which increased in size and density with depth. Within a light orangey-brown sandy silt subsoil.	302357 742128	None.	Goal depth achieved.
BTH4011	0.5 x 0.5 x 0.9	N/A	0.1m of concrete, over friable sandy gravel made ground with very frequent rounded and angular stones.	302355 742133	None.	Terminated at 0.9m due to drain encountered.
BTH4012	0.6 x 0.6 x 1.2	0.5	Mid brown sandy silt topsoil covered with leaf litter over a darker brown sandy silt subsoil with some medium and large sized rounded stones.	300321 742944	None.	Goal depth achieved.
BTH4013	0.5 x 0.5 x 1.2	0.2	Dark brownish-grey silty loam topsoil over yellowish-brown loamy sand subsoil with occasional small to medium sized subrounded stones	300324 742952	None.	Goal depth achieved.
BTH4014	0.6 x 0.6 x 1.2	0.15	Mid brown sandy silt topsoil covered with leaf litter over a darker brown sandy silt subsoil with some medium and large sized subrounded stones.	300313 742952	None.	Goal depth achieved.
BTH4015	0.6 x 0.6 x 1.2	0.1	Mid brown sandy silt topsoil covered with leaf litter over a darker brown sandy silt subsoil with some medium and large sized subrounded stones.	300320 742963	None.	Goal depth achieved.

Appendix 4 List of Hand Pits Access Advised On

Trial Pit No.	Description of Access	Further Archaeological Input Required?
BTH4000	Hand pit position is situated beside a boundary wall, access made directly to the position by foot and did not impact the wall. No visible upstanding archaeological remains en route.	None.
BTH4001	Hand pit position is situated on embankment above track. Access made directly to the position by foot over existing boundary wall, crossing did not impact the wall.	None.
BTH4002	Hand pit position is situated beside an existing track, access made directly to the position by foot. No visible upstanding archaeological remains en route.	None.
BTH4003	Hand pit position is situated in overgrowth behind houses. Access made by foot from the road along the path, through fence and overgrowth. No visible upstanding archaeological remains en route.	None.
BTH4004	Hand pit position is situated beside a track, access made directly to the position by foot. No visible upstanding archaeological remains en route.	None.
BTH4005	Hand pit position is situated by the side of a track, access made directly to the position by foot. No visible upstanding archaeological remains en route.	None.
BTH4006	Hand pit position is situated on grass verge that has been landscaped during General Wade's Military Road construction/upgrade. Access made from General Wade's Military Road to the position by foot. No visible upstanding archaeological remains en route.	None.
BTH4007	Hand pit position is situated on grass verge that has been landscaped during General Wade's Military Road construction/upgrade. Access made from General Wade's Military Road to the position by foot. No visible upstanding archaeological remains en route.	None.
BTH4008	Hand pit position is situated on grass verge that has been landscaped during General Wade's Military Road construction/upgrade. Access made from General Wade's Military Road to the position by foot. No visible upstanding archaeological remains en route.	None.
BTH4009	Hand pit position is situated on steep land at the edge of light woodland. Access made from General Wade's Military Road to the position by foot. No visible upstanding archaeological remains en route.	None.
BTH4010	Hand pit position is located in a warehouse yard. Access made from yard entrance near the junction between the A9 and General Wade's Military Road by foot. No visible upstanding archaeological remains en route.	None.
BTH4011	Hand pit position is located in a warehouse yard. Access made from yard entrance near the junction between the A9 and General Wade's Military Road by foot. No visible upstanding archaeological remains en route.	None.
BTH4012	Hand pit position is situated beside existing forestry road within mature commercial forestry. Access made from forestry road to position by foot. No visible upstanding archaeological remains en route.	None.
BTH4013	Hand pit position is situated in commercial forestry. Access made from A9 layby proceeding south along a forestry road by foot. No visible upstanding archaeological remains en route.	None.
BTH4014	Hand pit position is situated beside existing forestry road within mature commercial forestry. Access made from forestry road to position by foot. No visible upstanding archaeological remains en route.	None.
BTH4015	Hand pit position is situated beside existing forestry road within mature commercial forestry. Access made from forestry road to position by foot. No visible upstanding archaeological remains en route.	None.

Appendix 5 List of Monitored Boreholes

Borehole No.	Description of Watching Brief Works	General Stratigraphy	Co-ordinates	Archaeology?
BTB4002	ACoW monitored clearance of rhododendron situated within route of access, and minimal excavation over the borehole position to create an even platform for the rig to be situated upon.	Dark brown sandy silt topsoil with some small and medium sized subrounded stone over orangey-brown sandy silt subsoil with some small and medium sized subrounded stones.	304826 739920	None.

Appendix 6 List of Boreholes Access Advised On

Borehole No.	Description of Access	Further Archaeological Input Required?
BTB4000	Borehole position is situated on a mossy built up slope that forms an existing commercial forestry track surrounded by mature trees. Access to be made via road leading northeast off A9, and then through gated forestry track to access position directly. No visible upstanding archaeological remains en route.	None.
BTB4001	Borehole position is situated on mossy ground in commercial forestry surrounded by mature trees. Access to be made via gated road leading southwest off A9 onto a forestry track, and then straight to position through trees. No visible upstanding archaeological remains en route.	None.
BTB4002	Borehole position is situated on base of slope forming a bank of the A9, surrounded by rhododendron. Access to be made via gated road leading northeast off A9, and then through gated forestry track. Route diverges from track west to access, will require cutting through a fence. No visible upstanding archaeological remains en route.	Vegetation clearance and benching to be carried out under supervision of ACoW.
BTB4003	Borehole position is situated on base of bracken-covered slope forming a bank of the A9. Access to be made via gated road leading northeast off A9, and then through gated forestry track. Route diverges from track west to access. No visible upstanding archaeological remains en route.	None.
BTB4004	Borehole position is situated on mossy ground in commercial forestry surrounded by mature trees. Access to be made via gated road leading southwest off A9 onto a forestry track. Track to be followed northwest and then route to be taken just southeast of position to cut through fence and access from verge. No visible upstanding archaeological remains en route.	None.
BTB4005	Borehole position is situated on mossy ground in commercial forestry surrounded by mature trees. Access to be made via gated road leading southwest off A9 onto a forestry track. Track to be followed northwest and then route to be taken directly northeast through trees to position. No visible upstanding archaeological remains en route.	None.
BTB4006	Borehole position is situated on grass verge that has likely been landscaped during the side road's construction. Access to be made from layby area southwest of position, rig to be transported along the verge to position. No visible upstanding archaeological remains en route.	None.
BTB4007	Borehole position is situated in area of commercial forestry. Access to be made along existing track and then directly through wood to position. No visible upstanding archaeological remains en route.	None.
BTB4008	Borehole position is situated in agricultural field. Access to be made from side road off A9 and through gate. No visible upstanding archaeological remains en route.	None.

Borehole No.	Description of Access	Further Archaeological Input Required?
BTB4009	Borehole position is situated in grass verge beside cycle track. Access to be made from Bankfoot road. Verge likely landscaped during construction of A9. No visible upstanding archaeological remains en route.	None.
BTB4010	Borehole position is situated in grass verge beside A9 road. Access to be made from Bankfoot road. Verge likely landscaped during construction of A9. No visible upstanding archaeological remains en route.	None.
BTB4011	Borehole position is situated in grass verge beside A9 road. Access to be made from Bankfoot road. Verge likely landscaped during construction of A9. No visible upstanding archaeological remains en route.	None.
BTB4012	Borehole position is situated on battered slope beside A9. Access to be made from existing track and then through woodland and down into position. No visible upstanding archaeological remains en route.	None.
BTB4013	Borehole position is situated beside existing track. Access to be made from existing track. No visible upstanding archaeological remains en route.	None.
BTB4014	Borehole position is situated in grass verge beside A9 road. Access to be made from Bankfoot road. Verge likely landscaped during construction of A9. No visible upstanding archaeological remains en route.	None.
BTB4015	Borehole position is situated on battered slope beside A9. Access to be made from existing track and then through woodland and down into position. No visible upstanding archaeological remains en route.	None.
BTB4016	Borehole position is situated on existing track. Access to be made from existing track. No visible upstanding archaeological remains en route.	None.
BTB4017	Borehole position is situated in grass verge beside A9 junction. Access to be made from A9 and then along verge to position. Verge likely landscaped during construction of A9. No visible upstanding archaeological remains en route.	None.
BTB4018	Borehole position is situated on top of battered slope beside A9. Access to be made from existing track and then through woodland and down into position. No visible upstanding archaeological remains en route.	None.
BTB4019	Borehole position is situated in crop field, in stubble at time of survey. Access to be made from existing track into field and then along northwest perimeter to position. No visible upstanding archaeological remains en route.	None.
BTB4020	Borehole position is situated on top of small hill in woodland. Access to be made from Dunkeld slip road, around south of hill and then to the northeast and to position. No visible upstanding archaeological remains en route.	None.
BTB4021	Borehole position is situated at base of slope leading southwest up to the A9. Access is to be made from the Dunkeld road onto the hill slope and northwest into position. No visible upstanding archaeological remains en route.	None.
BTB4022	Borehole position is situated in yard of industrial estate. Access to be via road and into position. No visible upstanding archaeological remains en route.	None.
BTB4023	Borehole position is situated in car park of Dunkeld train station. Rig to be set up in station. No visible upstanding archaeological remains en route but a Vibration Management Plan is to be prepared by the client and approved by HES, PKHT etc prior to works.	A Vibration Management Plan is to be prepared by the client and approved by HES, PKHT etc prior to works.
BTB4024	Borehole position is situated on verge of A9. Access to be made from A9, along grass verge and into position. No visible upstanding archaeological remains en route.	None.
BTB4025	Borehole position is situated on verge of side road. Access to be made from side road into position. No visible upstanding archaeological remains en route.	None.
BTB4026	Borehole position is situated on steep bank of burn. Access to be made from A9, along grass verge and down into position. No visible upstanding archaeological remains en route.	None.

Borehole No.	Description of Access	Further Archaeological Input Required?
BTB4027	Borehole position is situated along the top of the battered slope down to the A9. Access to be made from northwest of the underpass below railway, uphill and along fence line to position. No visible upstanding archaeological remains en route.	None.
BTB4028	Borehole position is situated between access track and moderately well-preserved drystone wall. Access to be made from access track. Drystone wall not to be disturbed. A9, along grass verge and down into position. No visible upstanding archaeological remains en route but drystone wall closely situated.	SEGL field engineer has confirmed the drystone wall will not be disturbed during works.
BTB4029	Borehole position is situated between access track and moderately well-preserved drystone wall. Access to be made from access track. Drystone wall not to be disturbed. A9, along grass verge and down into position. No visible upstanding archaeological remains en route but drystone wall closely situated.	SEGL field engineer has confirmed the drystone wall will not be disturbed during works.
BTB4030	Borehole position is situated along the top of the battered slope down to the A9. Access to be made from northwest of the underpass below railway, uphill and along fence line to position. No visible upstanding archaeological remains en route.	None.
BTB4031	Borehole position is situated on edge of commercial forestry. Access is from existing side road and directly to position. No visible upstanding archaeological remains en route.	None.
BTB4032	Borehole position is situated on flattish ground in woodland beside railway line. Access to be made from road to the north and will come through the woodland into position. No visible upstanding archaeological remains en route.	None.
BTB4033	Borehole position is situated on verge between roads, within rhododendron bush. Access is from existing side road and directly to position. Area has likely been landscaped during construction of the roads. No visible upstanding archaeological remains en route.	None.
BTB4034	Borehole position is situated on tarmac of a building yard. Access to be made from road into yard area. No upstanding archaeological remains visible en route.	None.
BTB4035	Borehole position is situated on tarmac of a building yard. Access to be made from road into yard area. No upstanding archaeological remains visible en route.	None.
BTB4036	Borehole position is situated in field with planted saplings. Access is from existing side road and through field into position. No visible upstanding archaeological remains en route.	None.
BTB4037	Borehole position is situated on grassy and vegetation covered ground. Access to be made from Forestry Land Scotland carpark through existing gate onto track, and then gate into tree nursery. Access continues along grassy track and then diverges to position across open ground. No visible upstanding archaeological remains en route.	None.
BTB4038	Borehole position is situated within Forestry Land Scotland tree nursery. Access to be made from Forestry Land Scotland car park through existing gate, and then west along existing tar path. Fence will be cut through for immediate access to position. No visible upstanding archaeological remains en route.	None.
BTB4039	Borehole position is situated on verge of A9. Access to be made from A9 layby to the south and then along grass verge and into position. No visible upstanding archaeological remains en route.	None.

Borehole No.	Description of Access	Further Archaeological Input Required?
BTB4040	Borehole position is situated in woodland at base of battered slope beside A9. Access is to be through the woodland into the position. No visible upstanding archaeological remains en route.	Engineer advised the ACoW this position is likely to be moved to the top of the battered slope, where there are still no visible archaeological restrictions and thus no further input from the ACoW would be required.
BTB4041	Borehole position is situated in livestock field. Access is to be down existing track and into field to position. No visible upstanding archaeological remains en route.	None.
BTB4042	Borehole position is within line of railway. ACoW could not access but unlikely to be any upstanding archaeology as significant landscaping will have taken place in construction of railway.	None.
BTB4043	Borehole position is within line of railway. ACoW could not access but unlikely to be any upstanding archaeology as significant landscaping will have taken place in construction of railway.	None.
BTB4044	Borehole position is situated on mossy ground in commercial forestry surrounded by mature trees. Access to be made via forestry road and northeast through woods to position. No visible upstanding archaeological remains en route.	None.
BTB4045	Borehole position is situated on mossy ground in commercial forestry surrounded by mature trees. Access to be made via forestry road and northeast through woods to position. No visible upstanding archaeological remains en route.	None.
BTB4046	Borehole position is situated on mossy ground in commercial forestry surrounded by mature trees. Access to be made via forestry road and northeast through woods to position. No visible upstanding archaeological remains en route.	None.
BTB4047	Borehole position is situated within a quarry site. Access to be made from forestry road and to position. No visible upstanding archaeological remains en route.	None.
BTB4048	Borehole position is situated within a quarry site. Access to be made from forestry road and to position. No visible upstanding archaeological remains en route.	None.
BTB4049	Borehole position is situated within a quarry site. Access to be made from forestry road and to position. No visible upstanding archaeological remains en route.	None.
BTB4050	Borehole position is situated on moss and grass covered ground within mature commercial forestry. Access to be made from Tay Forestry carpark through existing gate onto old A9 road, and then north through trees to position. No visible upstanding archaeological remains en route.	None.
BTB4051	Borehole position is situated in pastured field. Access to be made via a land rover track into a gated field, rig to proceed around perimeter of field to position. No visible upstanding archaeological remains en route.	None.

Borehole No.	Description of Access	Further Archaeological Input Required?
BTB4052	Borehole position is situated on moss and grass covered ground within mature commercial forestry. Access to be made from Tay Forestry carpark through existing gate onto old A9 road, and then accessing position from this to avoid disturbing a drystone wall. No visible upstanding archaeological remains en route.	SEGL field engineer has confirmed the drystone wall will not be disturbed during works.
BTB4053	Borehole position is situated in pastured field. Access to be made via a land rover track into a gated field, rig to proceed around perimeter of field to position. No visible upstanding archaeological remains en route but the position is closely situated to a somewhat degraded drystone wall. Works to avoid impacting this.	SEGL field engineer has confirmed the drystone wall will not be disturbed during works.
BTB4054	Borehole position is situated in pastured field. Access to be made via a land rover track into a gated field, rig to proceed around perimeter of field to position. No visible upstanding archaeological remains en route.	None.
BTB4055	Borehole position is situated in pastured field. Access to be made via a land rover track into a gated field, rig to proceed around perimeter of field to position. No visible upstanding archaeological remains en route.	None.
BTB4056	Borehole position is situated in pastured field. Access to be made via a land rover track into a gated field, rig to proceed around perimeter of field to position. No visible upstanding archaeological remains en route.	None.
BTB4057	Borehole position is situated in grassy field. Access to be made from road leading east off A9 and through gate into field. Existing track to be used and at end of track, rig will proceed through field to position. No visible upstanding archaeological remains en route.	None.
BTB4058	Borehole position is situated under tarmac of existing layby. Access to be made from layby directly to position. No visible upstanding archaeological remains en route.	None.
BTB4059	Borehole position is situated under tarmac of existing layby. Access to be made from layby directly to position. No visible upstanding archaeological remains en route.	None.
BTB4060	Borehole position is situated under tarmac of existing layby. Access to be made from layby directly to position. No visible upstanding archaeological remains en route.	None.
BTB4061	Borehole position is situated on grass verge that has likely been landscaped during existing A9 build. Access to be made from layby to the south, rig to be transported along the verge to position. No visible upstanding archaeological remains en route.	None.
BTB4062	Borehole position is situated on grass verge that has likely been landscaped during existing A9 build. Access to be made from layby to the south, rig to be transported along the verge to position. No visible upstanding archaeological remains en route.	None.
BTB4063	Borehole position is situated in grassy field. Access to be made from road leading east off A9 and through gate into field. Existing track to be used and at end of track, rig will proceed north to position. No visible upstanding archaeological remains en route.	None.
BTB4064	Borehole position is situated on grassy riverbank below the Tay Crossing bridge. Access to be made from road leading east off A9 and then north down beaten path through mature natural woodland. Rig to pass under bridge and then proceed to position. Exact details not yet confirmed on how. No visible upstanding archaeological remains en route.	None.

Borehole No.	Description of Access	Further Archaeological Input Required?
BTB4065	Borehole position is situated on grassy riverbank below the Tay Crossing bridge. Access to be made from existing fishing road leading west off A9 and under bridge, proceeding directly to GI position. No visible upstanding archaeological remains en route.	None.
BTB4066	Borehole position is situated in bracken-covered dell between A9 and railway. Access is down a side road to gate, and then proceeding to position directly. No visible upstanding archaeological remains en route.	None.
BTB4067	Borehole position is situated on moss and grass covered ground within mature commercial forestry. Access to be made from Tay Forestry carpark through existing gate onto old A9 road, and then through woodland into position. No visible upstanding archaeological remains en route.	None.
BTB4068	Borehole position is situated in bracken-covered dell between A9 and railway. Access is down a side road to gate, and then proceeding to position directly. No visible upstanding archaeological remains en route.	None.
BTB4069	Borehole position is situated in bracken-covered dell between A9 and railway. Access is down a side road to gate, and then proceeding to position directly. No visible upstanding archaeological remains en route.	None.

Appendix 7 List of Site Photographs*

*To be viewed alongside Appendix 8: Additional Plates (seperate pdf)

Photo No.	GI No.	Description	Direction Facing	Date
AOC70472_(1)	BTB4050	View of GI position	N	03/02/2020
AOC70472_(2)	BTB4052	View of GI position	W	03/02/2020
AOC70472_(3)	BTB4052	View along access route - the old A9 - with GI position off to the left	N	03/02/2020
AOC70472_(4)	BTB4050	View along access route, a slight track, with old A9 road on right	NW	03/02/2020
AOC70472_(5)	BTB4050, BTB4052	View of access road from Tay Forestry Car Park	NW	03/02/2020
AOC70472_(6)	BTB4034, BTB4035	View of access gate from FLS car park	SE	03/02/2020
AOC70472_(7)	BTB4034	View of access gate into FLS tree nursery	N	03/02/2020
AOC70472_(8)	BTB4034	View of GI position from existing grass track	S	03/02/2020
AOC70472_(9)	BTB4035	View of GI position from existing tar track	N	03/02/2020
AOC70472_(10)	BTB4035	View along access to be taken, existing track leading to FLS car park gate	E	03/02/2020
AOC70472_(11)	BTB4006	View of access to be taken along verge to position from layby	SE	03/02/2020
AOC70472_(12)	BTB4006	GI position on verge	W	03/02/2020
AOC70472_(13)	BTB4008	View of gate access into field with BTB4008	E	03/02/2020
AOC70472_(14)	BTB4001	View of access gate to GIs BTB4001, BTB4004, BTB4005	NE	03/02/2020
AOC70472_(15)	BTB4000	View of access road, forestry gate is on left side to access GIs BTB4000, BTB4002, BTB4003	NE	03/02/2020
AOC70472_(16)	BTB4000	GI position on existing forestry track	NW	03/02/2020
AOC70472_(17)	BTB4003	GI position, A9 beyond	W	03/02/2020
AOC70472_(18)	BTB4002	GI position, A9 beyond	SW	03/02/2020
AOC70472_(19)	BTB4001	GI position in forestry	N	03/02/2020
AOC70472_(20)	BTB4004	GI position, access through gap in trees on right, A9 beyond	NE	03/02/2020
AOC70472_(21)	BTB4005	GI position	NE	03/02/2020
AOC70472_(22)	BTB4008	View of access down to BTB4008	NE	03/02/2020
AOC70472_(23)	BTB4061	GI position on verge from layby	NNE	03/02/2020
AOC70472_(24)	BTB4062	GI position on verge from layby	NNE	03/02/2020
AOC70472_(25)	BTB4063	View of proposed access down embankment beside river	N	03/02/2020
AOC70472_(26)	BTB4063	GI position below bridge	N	03/02/2020
AOC70472_(27)	BTB4057, BTB4063	Gate access to field with BTB4057 and BTB4063	S	03/02/2020
AOC70472_(28)	BTB4063	GI position beside railway line	WNW	03/02/2020
AOC70472_(29)	BTB4058, BTB4059, BTB4060	GI positions, all in existing layby area	N	03/02/2020

Photo No.	GI No.	Description	Direction Facing	Date
AOC70472_(30)	BTB4051, BTB4053, BTB4054, BTB4055, BTB4056	Access gate to field from Land Rover track	S	03/02/2020
AOC70472_(31)	BTB4051, BTB4053, BTB4054, BTB4055, BTB4056	View across field with GI positions	S	03/02/2020
AOC70472_(32)	BTB4054	View of GI position	SSW	03/02/2020
AOC70472_(33)	BTB4054	View of GI position	SW	03/02/2020
AOC70472_(34)	BTB4053	View of GI position, to be before boundary wall	S	03/02/2020
AOC70472_(35)	BTB4051	View of GI position	NE	03/02/2020
AOC70472_(36)	BTB4055	View of GI position	ENE	03/02/2020
AOC70472_(37)	BTB4067	View of GI position	S	03/02/2020
AOC70472_(38)	BTB4027, BTB4030	View of access uphill towards GI positions	SE	03/02/2020
AOC70472_(39)	BTB4027, BTB4030	View of top of battered slope between railway (right) and A9 (left), route towards GI positions	SE	03/02/2020
AOC70472_(40)	BTB4030	View of GI position at top of battered slope, A9 beyond	NE	03/02/2020
AOC70472_(41)	BTB4027	View of GI position at top of battered slope, A9 to right	NW	03/02/2020
AOC70472_(42)	BTB4039	View of GI position on A9 grass verge	WNW	04/02/2020
AOC70472_(43)	BTB4040	View of GI position on slope up to A9	ENE	04/02/2020
AOC70472_(44)	BTB4036	View of access route through planted saplings to GI position	E	04/02/2020
AOC70472_(45)	BTB4036	View of GI position within planted saplings	ENE	04/02/2020
AOC70472_(46)	BTB4031	View of GI position in commercial forestry	W	04/02/2020
AOC70472_(47)	BTB4028, BTB4029	View of GI positions BTB4028 (front) and BTB4029 (back)	W	04/02/2020
AOC70472_(48)	BTB4032	View of GI position in woodland beside railway line	W	04/02/2020
AOC70472_(49)	BTB4069	View of GI position in bracken-covered dell between railway (left) and A9 (right)	SE	04/02/2020
AOC70472_(50)	BTB4066	View of GI position in bracken-covered dell, on slope up to A9 (right)	SSE	04/02/2020
AOC70472_(51)	BTB4068	View of GI position in bracken-covered dell between railway (left) and A9 (right)	SE	04/02/2020
AOC70472_(52)	BTB4033	View of GI position in rhododendron on grass verge	S	04/02/2020
AOC70472_(53)	BTB4025	View of GI position in grass verge	N	04/02/2020
AOC70472_(54)	BTB4024	View of GI position in grass verge	NW	04/02/2020

Photo No.	GI No.	Description	Direction Facing	Date
AOC70472_(55)	BTB4023	View of GI position in Dunkeld Station car park	NW	04/02/2020
AOC70472_(56)	BTB4026	View of GI position on steep bank beside burn	SW	04/02/2020
AOC70472_(57)	BTB4009	View of GI position on verge beside cycle track	N	04/02/2020
AOC70472_(58)	BTB4010, BTB4011, BTB4014	View of GI positions on verge of A9, BTB4010 (front), BTB4011 (mid), BTB4014 (back)	NW	04/02/2020
AOC70472_(59)	BTB4017	View of GI position on verge beside A9 junction	NNE	
AOC70472_(60)	BTB4007	View up access track	SW	04/02/2020
AOC70472_(61)	BTB4007	View of GI position in wood	NW	04/02/2020
AOC70472_(62)	BTB4013	View of GI position beside track	SSE	04/02/2020
AOC70472_(63)	BTB4012	View of GI position on battered slope, A9 beyond	WSW	04/02/2020
AOC70472_(64)	BTB4015	View of GI position on battered slope, A9 beyond	W	04/02/2020
AOC70472_(65)	BTB4018	View of GI position in woodland	NW	04/02/2020
AOC70472_(66)	BTB4020	View of GI position in woodland	NE	04/02/2020
AOC70472_(67)	BTB4019	View of GI position in stubble crop field	NW	04/02/2020
AOC70472_(68)	BTB4065	View of GI position on grassy bank beside Tay	S	04/02/2020
AOC70472_(69)	BTB4041	View of GI position in field	SE	05/02/2020
AOC70472_(70)	BTB4021	View of GI position at base of slope leading up to north side of A9	S	05/02/2020
AOC70472_(71)	BTH4012	View of GI position in forestry	SW	05/02/2020
AOC70472_(72)	BTH4012	Post-excavation of hand pit	W	05/02/2020
AOC70472_(73)	BTH4014	View of GI position in forestry	NW	05/02/2020
AOC70472_(74)	BTH4014	Post-excavation of hand pit	W	05/02/2020
AOC70472_(75)	BTH4015	View of GI position in forestry	N	05/02/2020
AOC70472_(76)	BTB4047-9	View of quarry in which GI positions BTB4047, BTB4048 and BTB4049 are situated	WNW	05/02/2020
AOC70472_(77)	BTB4047	View of GI position in quarry	NW	04/02/2020
AOC70472_(78)	BTB4048	View of GI position in quarry	SE	04/02/2020
AOC70472_(79)	BTB4049	View of GI position in quarry	SW	04/02/2020
AOC70472_(80)	BTB4046	View of GI position in forestry	NE	05/02/2020
AOC70472_(81)	BTB4045	View of GI position in forestry	NE	05/02/2020
AOC70472_(82)	BTB4044	View of GI position in forestry	SW	05/02/2020
AOC70472_(83)	BTH4015	Post-excavation of hand pit	W	05/02/2020
AOC70472_(84)	BTT4043-4045	View of access track leading to field containing BTT4043, BTT4044, BTT4045	S	12/02/2020
AOC70472_(85)	BTT4045	Pre-excavation of trial pit location	W	12/02/2020
AOC70472_(86)	BTT4045	Mid-excavation onto subsoil	W	12/02/2020
AOC70472_(87)	BTT4045	S-facing section of trial pit	N	12/02/2020
AOC70472_(88)	BTT4044	View of GI position in field	W	12/02/2020
AOC70472_(89)	BTT4044	Pre-excavation of trial pit location	E	12/02/2020

Photo No.	GI No.	Description	Direction Facing	Date
AOC70472_(90)	BTT4044	Mid-excavation onto subsoil	E	12/02/2020
AOC70472_(91)	BTT4044	N-facing section of trial pit	S	12/02/2020
AOC70472_(92)	BTT4043	Pre-excavation of trial pit location	SE	12/02/2020
AOC70472_(93)	BTT4043	Mid-excavation onto subsoil	NW	12/02/2020
AOC70472_(94)	BTT4043	SW-facing section of trial pit	NE	12/02/2020
AOC70472_(95)	BTT4015, BTT4014, BTT4017 a	Access track to GI positions	W	13/02/2020
AOC70472_(96)	BTT4015, BTT4014, BTT4017 a	Lightly forested area (access to be made through here)	NE	13/02/2020
AOC70472_(97)	BTT4015	Original GI position	E	13/02/2020
AOC70472_(98)	BTT4015	Pre-excavation of trial pit location	E	13/02/2020
AOC70472_(99)	BTT4015	Mid-excavation onto subsoil	E	13/02/2020
AOC70472_(100)	BTT4015	N-facing section of trial pit	S	13/02/2020
AOC70472_(101)	BTT4021 and 4023	Access into field	NE	14/02/2020
AOC70472_(102)	BTT4021	Pre-excavation of trial pit location	SW	14/02/2020
AOC70472_(103)	BTT4023	Pre-excavation of trial pit location	NW	14/02/2020
AOC70472_(104)	BTT4021	Mid-excavation onto subsoil	NW	14/02/2020
AOC70472_(105)	BTT4021	SW-facing section of trial pit	NE	14/02/2020
AOC70472_(106)	BTT4021 a	Mid-excavation onto subsoil	NW	14/02/2020
AOC70472_(107)	BTT4021 a	SW-facing section of trial pit	NE	14/02/2020
AOC70472_(108)	BTT4023	Mid-excavation onto subsoil	NW	14/02/2020
AOC70472_(109)	BTT4023	SW-facing section of trial pit	NE	14/02/2020
AOC70472_(110)	BTT4002	Pre-excavation of trial pit location	E	17/02/2020
AOC70472_(111)	BTT4002	Mid-excavation onto subsoil	W	17/02/2020
AOC70472_(112)	BTT4002	S-facing section of trial pit	N	17/02/2020
AOC70472_(113)	BTT4002	S-facing section of trial pit (with tape measure for scale)	N	17/02/2020
AOC70472_(114)	BTT4026	Pre-excavation of trial pit location	NE	17/02/2020
AOC70472_(115)	BTT4026	Mid-excavation onto subsoil	SE	17/02/2020
AOC70472_(116)	BTT4026	NE-facing section of trial pit	SW	17/02/2020
AOC70472_(117)	BTT4016 and 4018	Traffic management area	NE	19/02/2020
AOC70472_(118)	BTT4016	View of GI position on verge	NW	19/02/2020
AOC70472_(119)	BTT4018	View of GI position on verge	NW	19/02/2020
AOC70472_(120)	BTT4016	Pre-excavation of trial pit location	NW	19/02/2020
AOC70472_(121)	BTT4016	Mid-excavation onto subsoil	NE	19/02/2020
AOC70472_(122)	BTT4016	SE-facing section of trial pit	NW	19/02/2020
AOC70472_(123)	BTT4018	Pre-excavation of trial pit location	NW	19/02/2020
AOC70472_(124)	BTT4018	Mid-excavation onto made ground	NE	19/02/2020
AOC70472_(125)	BTT4018	SE-facing section of trial pit (topsoil onto made ground)	NW	19/02/2020
AOC70472_(126)	BTT4018	Mid-excavation view onto tarmac	NE	19/02/2020

Photo No.	GI No.	Description	Direction Facing	Date
AOC70472_(127)	BTT4018	SE-facing section of trial pit (topsoil onto made ground onto tarmac)	NW	19/02/2020
AOC70472_(128)	BTT4020	Pre-excavation of trial pit location	W	19/02/2020
AOC70472_(129)	BTT4020	Mid-excavation onto made ground	SW	19/02/2020
AOC70472_(130)	BTT4020	NW-facing section of trial pit (topsoil onto made ground)	SE	19/02/2020
AOC70472_(131)	BTT4020	Mid-excavation onto subsoil	SW	19/02/2020
AOC70472_(132)	BTT4020	NW-facing section of trial pit (topsoil, made ground, and natural)	SE	19/02/2020
AOC70472_(133)	BTT4022	View of GI position on verge	S	19/02/2020
AOC70472_(134)	BTT4022	Pre-excavation of trial pit location	SE	19/02/2020
AOC70472_(135)	BTT4022	Mid-excavation onto made ground	NE	19/02/2020
AOC70472_(136)	BTT4022	NW-facing section of trial pit	SE	19/02/2020
AOC70472_(137)	BTT4038	Pre-excavation of trial pit location	W	20/02/2020
AOC70472_(138)	BTT4038	Mid-excavation onto made ground	E	20/02/2020
AOC70472_(139)	BTT4038	N-facing section of trial pit (topsoil onto made ground)	S	20/02/2020
AOC70472_(140)	BTT4038	Post-excavation showing topsoil and made ground	E	20/02/2020
AOC70472_(141)	BTT4038	N-facing section of trial pit at full depth excavated	S	20/02/2020
AOC70472_(142)	BTT4037	Pre-excavation of trial pit location	S	20/02/2020
AOC70472_(143)	BTT4037	Mid-excavation onto made ground	W	20/02/2020
AOC70472_(144)	BTT4037	S-facing section of trial pit (topsoil onto made ground)	N	20/02/2020
AOC70472_(145)	BTT4037	Post-excavation showing topsoil and made ground	W	20/02/2020
AOC70472_(146)	BTT4037	S-facing section at full depth excavated	N	20/02/2020
AOC70472_(147)	BTT4038 a	Pre-excavation of trial pit location	SW	20/02/2020
AOC70472_(148)	BTT4038 a	Post-excavation showing topsoil and made ground	E	20/02/2020
AOC70472_(149)	BTT4038 a	S-facing section of trial pit	N	20/02/2020
AOC70472_(150)	BTT4047	View of GI position on verge	SE	20/02/2020
AOC70472_(151)	BTT4047	Pre-excavation of trial pit location	SE	20/02/2020
AOC70472_(152)	BTT4047	Mid-excavation onto second made ground layer	S	20/02/2020
AOC70472_(153)	BTT4047	W-facing section of trial pit onto second made ground layer	E	20/02/2020
AOC70472_(154)	BTT4047	Mid-excavation onto and through natural	S	20/02/2020
AOC70472_(155)	BTT4047	E-facing section of trial pit	W	20/02/2020
AOC70472_(156)	BTT4033	View of GI position on verge	W	21/02/2020
AOC70472_(157)	BTT4033	Pre-excavation of trial pit location	S	21/02/2020
AOC70472_(158)	BTT4033	Mid-excavation onto subsoil	S	21/02/2020
AOC70472_(159)	BTT4033	E-facing section of trial pit	W	21/02/2020
AOC70472_(160)	BTT4030	Pre-condition image of wall	SW	21/02/2020
AOC70472_(161)	BTT4030	Pre-condition image of wall	SE	21/02/2020
AOC70472_(162)	BTT4030	Pre-condition image of wall	NW	21/02/2020
AOC70472_(163)	BTT4030	Pre-excavation of trial pit location	SW	21/02/2020
AOC70472_(164)	BTT4030	Mid-excavation onto subsoil	NW	21/02/2020

Photo No.	GI No.	Description	Direction Facing	Date
AOC70472_(165)	BTT4030	SE-facing section of trial pit	NW	21/02/2020
AOC70472_(166)	BTT4000 - BTT4003	Access into forestry	NW	25/02/2020
AOC70472_(167)	BTT4000	Pre-excavation of trial pit location	N	25/02/2020
AOC70472_(168)	BTT4000	Mid-excavation onto subsoil	S	25/02/2020
AOC70472_(169)	BTT4000	E-facing section of trial pit	W	25/02/2020
AOC70472_(170)	BTB4002	Post-vegetation removal to facilitate access to GI position	SW	25/02/2020
AOC70472_(171)	BTB4002	Post-vegetation removal to facilitate access to GI position	N	25/02/2020
AOC70472_(172)	BTB4002	Post-vegetation removal to facilitate access to GI position	NE	25/02/2020
AOC70472_(173)	BTT4001	Pre-excavation of trial pit location	SE	26/02/2020
AOC70472_(174)	BTT4001	Mid-excavation onto subsoil	N	26/02/2020
AOC70472_(175)	BTT4001	W-facing section of trial pit	E	26/02/2020
AOC70472_(176)	BTT4003	Pre-excavation of trial pit location	E	26/02/2020
AOC70472_(177)	BTT4003	Mid-excavation onto subsoil	NW	26/02/2020
AOC70472_(178)	BTT4003	SW-facing section of trial pit	NE	26/02/2020
AOC70472_(179)	BTT4046	Pre-excavation of trial pit location	S	26/02/2020
AOC70472_(180)	BTT4046	Mid-excavation onto subsoil	NW	26/02/2020
AOC70472_(181)	BTT4046	SW-facing section of trial pit	NE	26/02/2020
AOC70472_(182)	BTT4014	Pre-excavation of trial pit location	NW	27/02/2020
AOC70472_(183)	BTT4014	Mid-excavation of trial pit	SW	27/02/2020
AOC70472_(184)	BTT4014	NW-facing section of trial pit	SE	27/02/2020
AOC70472_(185)	BTT4019	Pre-excavation of trial pit location	N	27/02/2020
AOC70472_(186)	BTT4019	Mid-excavation of trial pit onto made ground	N	27/02/2020
AOC70472_(187)	BTT4019	W-facing section of trial pit onto made ground	E	27/02/2020
AOC70472_(188)	BTT4019	Post-excavation of trial pit at full depth	N	27/02/2020
AOC70472_(189)	BTT4019	W-facing section of trial pit at full depth	E	27/02/2020
AOC70472_(190)	BTT4017	Pre-excavation of trial pit location	SW	28/02/2020
AOC70472_(191)	BTT4017	Mid-excavation of trial pit	NE	28/02/2020
AOC70472_(192)	BTT4017	NW-facing section of trial pit	SE	28/02/2020
AOC70472_(193)	BTT4017 a	Pre-excavation of trial pit location	S	28/02/2020
AOC70472_(194)	BTT4017 a	Mid-excavation of trial pit onto made ground	S	28/02/2020
AOC70472_(195)	BTT4017 a	E-facing section of trial pit	W	28/02/2020
AOC70472_(196)	BTT4017 a	Mid-excavation of trial pit onto gravel	S	28/02/2020
AOC70472_(197)	BTT4017 a	Mid-excavation of trial pit onto gravel	S	28/02/2020
AOC70472_(198)	BTT4017 a	E-facing section of trial pit	W	28/02/2020
AOC70472_(199)	BTT4012	Pre-excavation of trial pit location	N	28/02/2020
AOC70472_(200)	BTT4012	Mid-excavation of trial pit onto subsoil	E	28/02/2020
AOC70472_(201)	BTT4012	N-facing-section of trial pit	S	28/02/2020
AOC70472_(202)	BTT4013	Pre-excavation of trial pit location	N	02/03/2020
AOC70472_(203)	BTT4013	Mid-excavation of trial pit onto subsoil	S	02/03/2020

Photo No.	GI No.	Description	Direction Facing	Date
AOC70472_(204)	BTT4013	E-facing-section of trial pit	W	02/03/2020
AOC70472_(205)	BTT4010	Pre-excavation of trial pit location	N	02/03/2020
AOC70472_(206)	BTT4010	Mid-excavation of trial pit	S	02/03/2020
AOC70472_(207)	BTT4010	E-facing-section of trial pit	W	02/03/2020
AOC70472_(208)	BTT4009	Pre-excavation of trial pit location	NE	02/03/2020
AOC70472_(209)	BTT4009	Mid-excavation of trial pit	S	02/03/2020
AOC70472_(210)	BTT4009	E-facing section of trial pit	W	02/03/2020
AOC70472_(211)	BTT4008	Pre-excavation of trial pit location	NW	02/03/2020
AOC70472_(212)	BTT4008	Mid-excavation of trial pit	NW	02/03/2020
AOC70472_(213)	BTT4008	SW-facing section of trial pit	NE	02/03/2020
AOC70472_(214)	BTT4031, BTT4031 a, BTT4032, BTT4034	View of access from A9 through gate onto forestry track	SSW	02/03/2020
AOC70472_(215)	BTT4031, BTT4031 a, BTT4032	View of GI positions beneath overhead line in forestry plantation	SE	02/03/2020
AOC70472_(216)	BTT4031, BTT4031 a	View of access to GI positions beneath overhead line in forestry plantation	WNW	02/03/2020
AOC70472_(217)	BTT4031	Pre-excavation of trial pit location	NE	02/03/2020
AOC70472_(218)	BTT4031	Mid-excavation onto subsoil	SE	02/03/2020
AOC70472_(219)	BTT4031	SW-facing section of trial pit	NE	02/03/2020
AOC70472_(220)	BTT4031 a	Pre-excavation of trial pit location	NW	02/03/2020
AOC70472_(221)	BTT4031 a	Mid-excavation onto subsoil	W	02/03/2020
AOC70472_(222)	BTT4031 a	S-facing section of trial pit	N	02/03/2020
AOC70472_(223)	BTT4031 a	S-facing section of trial pit (oblique)	NW	02/03/2020
AOC70472_(224)	BTT4032	Pre-excavation of trial pit location	S	02/03/2020
AOC70472_(225)	BTT4032	Mid-excavation onto subsoil	E	02/03/2020
AOC70472_(226)	BTT4032	N-facing section of trial pit	S	02/03/2020
AOC70472_(227)	BTT4032	View of access from BTT4031	E	02/03/2020
AOC70472_(228)	BTT4034	View of access through forestry plantation	E	02/03/2020
AOC70472_(229)	BTT4034	Pre-excavation of trial pit location	SW	02/03/2020
AOC70472_(230)	BTT4034	Mid-excavation onto subsoil	SE	02/03/2020
AOC70472_(231)	BTT4034	SW-facing section of trial pit	NE	02/03/2020
AOC70472_(232)	BTT4034	Working shot	SE	02/03/2020
AOC70472_(233)	BTT4030	Post-condition of area showing wall and backfilled trial pit	SE	03/03/2020
AOC70472_(234)	BTT4030	Post-condition of area showing wall and backfilled trial pit	S	03/03/2020
AOC70472_(235)	BTT4030	Post-condition of area showing wall and backfilled trial pit	N	03/03/2020
AOC70472_(236)	BTT4004	View of access	E	03/03/2020
AOC70472_(237)	BTT4004	Pre-excavation of trial pit location	E	03/03/2020

Photo No.	GI No.	Description	Direction Facing	Date
AOC70472_(238)	BTT4004	Mid-excavation of trial pit	W	03/03/2020
AOC70472_(239)	BTT4004	SW-facing section of trial pit	N	03/03/2020
AOC70472_(240)	BTT4005	Pre-excavation of trial pit location	E	03/03/2020
AOC70472_(241)	BTT4005	Mid-excavation of trial pit	NW	03/03/2020
AOC70472_(242)	BTT4005	NE-facing section of trial pit	SW	03/03/2020
AOC70472_(243)	BTT4036	Pre-excavation of trial pit location	W	03/03/2020
AOC70472_(244)	BTT4036	View of GI position in forest clearing	SSW	03/03/2020
AOC70472_(245)	BTT4035	Pre-excavation of trial pit location	W	03/03/2020
AOC70472_(246)	BTT4035, BTT4036	View of access along unsurfaced track	W	03/03/2020
AOC70472_(247)	BTT4035, BTT4036	View of access through gate	NW	03/03/2020
AOC70472_(248)	BTT4035, BTT4036	View of access through a lightly forested area looking towards A9	N	03/03/2020
AOC70472_(249)	BTT4036	Mid-excavation of trial pit onto made ground	N	03/03/2020
AOC70472_(250)	BTT4036	E-facing section of trial pit	W	03/03/2020
AOC70472_(251)	BTT4036	Mid-excavation of trial pit onto subsoil	S	03/03/2020
AOC70472_(252)	BTH4004	Pre-excavation of hand pit location	NW	04/03/2020
AOC70472_(253)	BTH4004	Mid-excavation of hand pit	W	04/03/2020
AOC70472_(254)	BTH4004	E-facing section of hand pit	W	04/03/2020
AOC70472_(255)	BTH4005	Pre-excavation of hand pit location	N	04/03/2020
AOC70472_(256)	BTH4005	Mid-excavation of hand pit	SW	04/03/2020
AOC70472_(257)	BTH4005	SW-facing section of hand pit	SE	04/03/2020
AOC70472_(258)	BTH4001	Boundary wall	SW	04/03/2020
AOC70472_(259)	BTH4001	Boundary wall	SW	04/03/2020
AOC70472_(260)	BTH4001	Pre-excavation of hand pit location	W	04/03/2020
AOC70472_(261)	BTH4002	Pre-excavation of hand pit location	E	04/03/2020
AOC70472_(262)	BTH4001	Mid-excavation of hand pit	W	04/03/2020
AOC70472_(263)	BTH4001	E-facing section of hand pit	W	04/03/2020
AOC70472_(264)	BTH4002	Mid-excavation of hand pit	E	04/03/2020
AOC70472_(265)	BTH4002	W-facing section of hand pit	E	04/03/2020
AOC70472_(266)	BTH4000	View of GI position showing boundary wall	W	04/03/2020
AOC70472_(267)	BTH4000	Pre-excavation of hand pit location	W	04/03/2020
AOC70472_(268)	BTH4000	Mid-excavation of hand pit	W	04/03/2020
AOC70472_(269)	BTH4000	E-facing section of hand pit	W	04/03/2020
AOC70472_(270)	BTH4003	View of access to GI position	N	04/03/2020
AOC70472_(271)	BTH4003	View of access to GI position	N	04/03/2020
AOC70472_(272)	BTH4003	View of access to GI position	W	04/03/2020
AOC70472_(273)	BTH4003	Pre-excavation of hand pit location	N	04/03/2020
AOC70472_(274)	BTH4003	Mid-excavation of hand pit	N	04/03/2020
AOC70472_(275)	BTH4003	S-facing section of hand pit	N	04/03/2020
AOC70472_(276)	BTT4035	Mid-excavation of trial pit onto subsoil	SE	04/03/2020
AOC70472_(277)	BTT4035	SW-facing section of trial pit	NE	04/03/2020
AOC70472_(278)	BTT4007	Pre-excavation of trial pit location	NE	04/03/2020

Photo No.	GI No.	Description	Direction Facing	Date
AOC70472_(279)	BTT4007	View of GI position in forestry plantation from BTT4006	NE	04/03/2020
AOC70472_(280)	BTT4006	Pre-excavation of trial pit location	NW	04/03/2020
AOC70472_(281)	BTT4006	View of GI position in forestry plantation	NW	04/03/2020
AOC70472_(282)	BTT4006	View of GI position in forestry plantation	NW	04/03/2020
AOC70472_(283)	BTT4007	Mid-excavation of trial pit onto subsoil	W	04/03/2020
AOC70472_(284)	BTT4007	S-facing section of trial pit	N	04/03/2020
AOC70472_(285)	BTT4006	Mid-excavation of trial pit onto lighter loam deposit	N	04/03/2020
AOC70472_(286)	BTT4006	W-facing section of trial pit showing topsoil depth	E	04/03/2020
AOC70472_(287)	BTT4006	Mid-excavation of trial pit onto subsoil	N	04/03/2020
AOC70472_(288)	BTT4006	W-facing section of trial pit	E	04/03/2020
AOC70472_(289)	BTT4025	Pre-excavation of trial pit location with BTT4024 behind	SE	05/03/2020
AOC70472_(290)	BTT4024	Pre-excavation of trial pit location	SE	05/03/2020
AOC70472_(291)	BTT4024, BTT4025	View of GI position in a lightly forested area	SE	05/03/2020
AOC70472_(292)	BTH4006	Pre-excavation of hand pit location	S	05/03/2020
AOC70472_(293)	BTH4007	Pre-excavation of hand pit location	W	05/03/2020
AOC70472_(294)	BTH4008	Pre-excavation of hand pit location	SW	05/03/2020
AOC70472_(295)	BTH4009	Pre-excavation of hand pit location	SE	05/03/2020
AOC70472_(296)	BTH4008	Mid-excavation onto made ground	NW	05/03/2020
AOC70472_(297)	BTH4008	SE-facing section of hand pit	NW	05/03/2020
AOC70472_(298)	BTH4006 - BTH4009	View of GI positions on grass verge	W	05/03/2020
AOC70472_(299)	BTT4024	Mid-excavation of trial pit onto subsoil showing stone-filled field drain	NW	05/03/2020
AOC70472_(300)	BTT4024	SW-facing section of trial pit	NE	05/03/2020
AOC70472_(301)	BTT4024	Mid-excavation of trial pit after widening	NW	05/03/2020
AOC70472_(302)	BTH4008	Post-excavation of hand pit	NW	05/03/2020
AOC70472_(303)	BTH4008	SE-facing section of hand pit	NW	05/03/2020
AOC70472_(304)	BTH4007	Post-excavation of hand pit	S	05/03/2020
AOC70472_(305)	BTH4007	S-facing section of hand pit	N	05/03/2020
AOC70472_(306)	BTT4025	Mid-excavation of trial pit onto subsoil	NW	05/03/2020
AOC70472_(307)	BTT4025	NE-facing section of trial pit	SW	05/03/2020
AOC70472_(308)	BTH4006	E-facing section of hand pit	W	05/03/2020
AOC70472_(309)	BTH4006	Post-excavation of hand pit	N	05/03/2020
AOC70472_(310)	BTH4009	NW-facing section of hand pit	SE	05/03/2020
AOC70472_(311)	BTH4009	Post-excavation of hand pit	SE	05/03/2020
AOC70472_(312)	BTH4013	View of access from A9 layby	N	05/03/2020
AOC70472_(313)	BTH4013	View of access to GI position in woodland along unsurfaced track	S	05/03/2020
AOC70472_(314)	BTH4013	Pre-excavation of hand pit location	W	05/03/2020
AOC70472_(315)	BTH4013	E-facing section of hand pit	W	05/03/2020
AOC70472_(316)	BTH4013	Post-excavation of hand pit	W	05/03/2020
AOC70472_(317)	BTH4010	Pre-excavation of hand pit location	N	06/03/2020

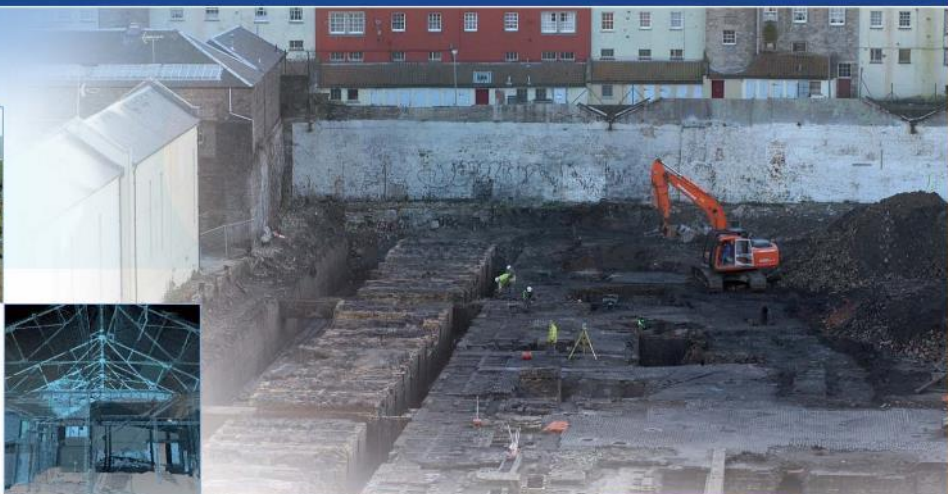
Photo No.	GI No.	Description	Direction Facing	Date
AOC70472_(318)	BTH4011	Pre-excavation of hand pit location	N	06/03/2020
AOC70472_(319)	BTH4010, BTH4011	View of GI positions in warehouse yard	N	06/03/2020
AOC70472_(320)	BTH4010, BTH4011	View of access looking towards General Wade's Military Road	E	06/03/2020
AOC70472_(321)	BTH4010	Mid-excavation of hand pit onto subsoil	N	06/03/2020
AOC70472_(322)	BTH4010	S-facing section of hand pit	N	06/03/2020
AOC70472_(323)	BTH4011	Post-excavation of hand pit onto subsoil	E	06/03/2020
AOC70472_(324)	BTH4011	W-facing section of hand pit	E	06/03/2020
AOC70472_(325)	BTT4042	View of access from A9	ESE	09/03/2020
AOC70472_(326)	BTT4042	View of access along grass verge	N	09/03/2020
AOC70472_(327)	BTT4042	Pre-excavation of trial pit location	S	09/03/2020
AOC70472_(328)	BTT4042	View of access down steep hillslope	W	09/03/2020
AOC70472_(329)	BTT4042	Post-excavation of hillslope levelling showing made ground	SW	09/03/2020
AOC70472_(330)	BTT4042	Post-excavation of hillslope levelling showing made ground	NE	09/03/2020
AOC70472_(331)	BTT4042	Mid-excavation of trial pit onto made ground	SW	09/03/2020
AOC70472_(332)	BTT4042	Mid-excavation of trial pit onto subsoil	SW	09/03/2020
AOC70472_(333)	BTT4042	SW-facing section of trial pit	NE	09/03/2020
AOC70472_(334)	BTT4041	Pre-excavation of trial pit location	N	09/03/2020
AOC70472_(335)	BTT4041	View of access along forestry track	S	09/03/2020
AOC70472_(336)	BTT4041	View of access along forestry track	NW	09/03/2020
AOC70472_(337)	BTT4041	View of GI position in grass covered area adjacent to forestry laydown area	N	09/03/2020
AOC70472_(338)	BTT4041	Mid-excavation of trial pit onto subsoil	S	09/03/2020
AOC70472_(339)	BTT4041	Working shot of W-facing section	E	09/03/2020
AOC70472_(340)	BTT4029	Pre-excavation of trial pit location	W	10/03/2020
AOC70472_(341)	BTT4029	View of GI position in a lightly wooded area.	SW	10/03/2020
AOC70472_(342)	BTT4029	View of access along single-track road	SW	10/03/2020
AOC70472_(343)	BTT4029	Mid-excavation of trial pit onto subsoil	E	10/03/2020
AOC70472_(344)	BTT4029	S-facing section of trial pit	N	10/03/2020
AOC70472_(345)	BTT4030	Pre-condition of boundary wall after re-excavation of trial pit	SE	10/03/2020
AOC70472_(346)	BTT4030	Working shot of trial pit re-excavation	S	10/03/2020
AOC70472_(347)	BTT4030	Post-condition of boundary wall after re-excavation of trial pit	SE	10/03/2020
AOC70472_(348)	BTT4030	Post-condition of boundary wall after re-excavation of trial pit	SE	10/03/2020
AOC70472_(349)	BTT4048	View of access along track towards the GI position	S	10/03/2020
AOC70472_(350)	BTT4048	View of access from the A9	SE	10/03/2020
AOC70472_(351)	BTT4048	Pre-excavation of trial pit location	NE	10/03/2020
AOC70472_(352)	BTT4048	W-facing section of trial pit	E	10/03/2020
AOC70472_(353)	BTT4048	Mid-excavation of trial pit onto subsoil	N	10/03/2020

Appendix 8 Additional Plates

(separate pdf)

Appendix 9 List of Drawings

(Drawings prepared by Soil Engineering Geoservices Ltd)



AOC Archaeology (Inverness) The Old Estate Office Rosehaugh Estate Avoch Ross-shire IV9 8RF
| tel: 01463 819 841 | mob: 07972 259 255 | e-mail: inverness@aocarchaeology.com

www.aocarchaeology.com