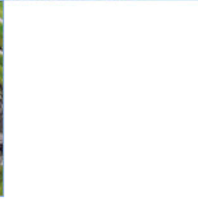
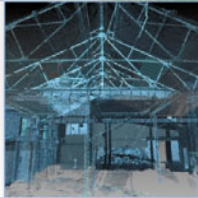
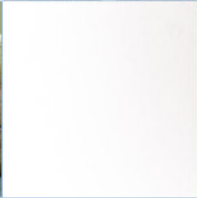
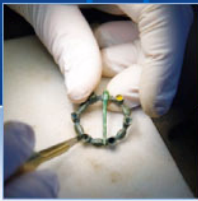


Hunterfield Road (07/00352/FUL) and Newbyres (07/00351/FUL), Gorebridge: Data Structure Report

20933

March 2008



ARCHAEOLOGY

HERITAGE

CONSERVATION

Hunterfield Road (07/00352/FUL) & Newbyres (07/00351/FUL), Gorebridge Evaluation Data Structure Report

On Behalf of:	Persimmon Homes East Scotland Ltd Unit 1 Wester Inch Business Park Bathgate EH48 2TQ
National Grid Reference (NGR):	NT340 614 & NT 336 627
AOC Project No:	20933
Prepared by:	Victoria Clements
Illustration by:	Alan Hunter Blair
Date of Fieldwork:	13th – 25th March 2008
Date of Report:	27th March 2008

This document has been prepared in accordance with AOC standard operating procedures.

Author: Victoria Clements	Date: 27/03/2008
Approved by: John Gooder	Date: 27/03/2008
Draft/Final Report Stage: Draft	Date: 27/03/2008

Enquiries to: AOC Archaeology Group
Edgefield Industrial Estate
Edgefield Road
Loanhead
EH20 9SY

Tel. 0131 440 3593
Fax. 0131 440 3422
e-mail. admin@aocarchaeology.com



Contents

	Page
List of illustrations	1
List of appendices.....	1
Abstract.....	2
1 INTRODUCTION	3
1.1 Background	3
1.3 Location.....	3
1.4 Archaeological background	3
2. OBJECTIVES	4
3 METHODOLOGY	4
4 RESULTS	5
5 CONCLUSION.....	6
6 BIBLIOGRAPHIC REFERENCES.....	6
APPENDIX 1.....	8
Trench Descriptions.....	8
APPENDIX 2.....	19
Photographic Record	19
APPENDIX 3.....	22
Discovery and Excavation in Scotland Report	22

List of illustrations

Figure 1 Site location and location of evaluation trenches

List of appendices

Appendix 1 Trench Descriptions
Appendix 2 Photographic Record
Appendix 3 Discovery and Excavation in Scotland Report

Abstract

This report represents the results of an archaeological evaluation undertaken by AOC Archaeology Group on land parcels proposed for residential development at Newbyres and Hunterfield Road, Gorebridge, Midlothian. The work was commissioned by Persimmon Homes East Scotland Ltd. The archaeological works were designed to satisfy the requirements of the local planning authority, as advised by Mr David Connolly of East Lothian Council Archaeology Service, and are in accordance with the principles inherent in NPPG 5 (SOEnd 1994) and PAN 42 (SOEnd 1994a).

The objective of the work was to evaluate the archaeological potential of the development areas. The work was carried out during March 2008 and was conducted according to the terms of a *Written Scheme of Investigation* (AOC 2008) which was agreed by Mr Connolly, and approved by the planning authority. The evaluation consisted of 46 trenches totalling 7070 m².

The evaluation revealed no features or artefacts of archaeological significance. No further archaeological works are recommended.

1 INTRODUCTION

1.1 Background

- 1.1 AOC Archaeology Group was commissioned by Persimmon Homes East Scotland Ltd to undertake a programme of archaeological works on land parcels proposed for residential development at Newbyres and Hunterfield Road, Gorebridge, Midlothian. The work required is in response to planning conditions (07/00351/FUL & 07/00352/FUL) set by Midlothian Council.
- 1.2 Midlothian Council is advised on archaeological matters by Mr. David Connolly, the Assistant Archaeological Officer for East Lothian Council. Mr. Connolly had recommended intrusive archaeological evaluation of the development areas in facilitating the planning application. The work is required in accordance with NPPG 5 (SOEnd 1994) and PAN 42 (SOEnd 1994a), in order to determine the nature, extent, condition, date and significance of any archaeological remains within the proposed development area.

1.3 Location

- 1.2.1 The site at Newbyres is centred on NGR: NT 340 614 and is bounded by woods to the west, playing fields to the north, a residential area to the east and the Gore Water to the south (see Figure 1). The site at Hunterfield Road is centred on NGR: NT 336 627 and bounded by the A7 to the west, residential areas and open land to the west and Engine Road to the south. Hunterfield Road bisects the site (see Figure 1 Areas A, B & C).

1.4 Archaeological background

- 1.3.1 A desk-based assessment has been undertaken (AOC 2008). Cartographic and bibliographic sources indicate that the area was in heavy industrial use during the 19th and 20th centuries. The southern portion of the Newbyres site was occupied by Gore Pit, one of two pits belonging to Arniston Colliery, up until the early 1980s. Arniston Engine, Colliery and Gasworks occupied an area along Engine Road immediately east of the western portion of the proposed Hunterfield Road development site. Additionally, historic mapping indicates that the no longer extant Peaston Hall may have fallen within the boundary of the eastern portion of the Hunterfield Road development site; and as such remains associated with Peaston Hall may have survived as subsurface features. The proximity of the Newbyres site to Newbyres Castle, a late medieval tower house, also indicated a possibility of encountering associated remains of a similar date. In addition portions of both proposed development areas appear to have remained relatively undisturbed in the past 500 years and as such there was a possibility of encountering hitherto unknown remains of an earlier date.

- 1.3.2 The geology of the area is primarily of the Dinantian age (McAdam & Clarkson 1986). This is overlain by soil of the Rowanhill Association; being freely drained till derived from Carboniferous shale, sandstones, cementstones and coals (Soil Survey of Scotland 1971).

2. OBJECTIVES

2.1 The objectives of the archaeological evaluation were:

- i)* to determine and assess the character, extent, condition, quality, date and significance of any buried archaeological remains within the proposed development area;
- ii)* to advise and implement an appropriate form of mitigation, such as excavation, post-excavation analyses and publication, given the infeasibility of preserving the archaeological material *in situ*, should significant archaeological remains be encountered.

3 METHODOLOGY

3.1 Introduction

3.1.1 The trial trenching was designed to establish the extent, condition, character, quality, significance and date of any archaeological features present. The trenches were of varying lengths and set on varying orientations (Figure 1). Weather conditions during the evaluation were variable with good archaeological visibility.

3.1.2 Stripping of the overburden was by means of a 360° excavator equipped with a toothless ditching bucket approximately 2.00 m wide. Excavation was undertaken in shallow units/spits until the first significant archaeological horizon or natural subsoil was reached. All machine excavation was supervised by an experienced field archaeologist.

3.1.3 All trial trenching was undertaken according to AOC Archaeology Group's standard operating procedures. Stratigraphy was recorded in all trenches even where no deposits of archaeological significance were discovered. The trenches were backfilled on completion of excavation.

3.2 Trenching within specific areas

3.2.1 The evaluation trenching comprised the evaluation of four discrete land parcels: the Newbyres development area and Areas A, B and C of the Hunterfield Road development area.

3.2.2 Area A (Hunterfield Road Development)

Evaluation trenching comprised a 5% sample of the 7.4 ha area. Random trenching was distributed over the entire area with specific trenching in the former location of Peaston Hall (Site 15 in DBA). Total trenching was designed to be no less than 1850 m².

3.2.3 Areas B & C (Hunterfield Road Development)

Trenching entailed a minimum 5% sample of random trenching in those areas where topography both permitted trenching and yielded some potential for past anthropic activity and its survival (estimated at about one third of the combined Area B and C area). Trenching encompassed the relatively level ground around 'Engine' (Site 4 in DBA). Total trenching in these areas would comprise a minimum of c 4470 m².

3.2.4 Newbyres Development

Trenching comprised a minimum 5% sample of random trenching in those areas where topography both permitted trenching and yielded some potential for past anthropic activity and its survival (estimated at about one third of the Newbyres 4.5 ha application area). Evaluation trenching was designed to be a minimum of 750 m². As the area along the southern boundary of the area had suffered considerable disturbance from railway construction (see DBA Figure 8) no trenching was undertaken at this location. In the south-west of the area Arniston Colliery / Gore Pit (Site 5 in DBA) is shown on mapping up until 1981.

4 RESULTS

- 4.1 The archaeological evaluation was undertaken between 13th and 25th March 2008. Forty-six trenches, each approximately 2.00 m wide were machine excavated (Figure 1). Weather conditions were such that good archaeological visibility was present throughout the entire evaluation. The following should be read in conjunction with the data presented in Appendices 1-3 and Figure 1.
- 4.2 The excavation of all the trenches revealed topsoil comprising soft dark brown clay silt with occasional small sub-rounded and sub-angular stones. Moderate numbers of sherds of modern white ceramic and modern glass were observed scattered throughout the topsoil in all of the trenches. Underlying the topsoil, natural subsoil consisted of friable light to mid orange brown sandy clay, silty clay with occasional patches of soft light yellow orange sand and very occasional alluvial gravel deposits, with moderate small sub-rounded and sub-angular stones and occasional larger sub-rounded boulders.
- 4.3 Five of the trenches (Trench 10, 13, 19, 37 and 40) revealed a mixed layer of light grey brown silty clay between the topsoil and underlying natural subsoil. In Trench 43 a 0.10 m thick layer of silty coal waste was observed between the topsoil and natural subsoil.
- 4.4 In Trenches 2 and 19 rectangular features approximately 2.6 - 3.0 m in length and 0.90 m wide were uncovered. The pit in Trench 2 was investigated and proved to be 0.65 m in depth, filled with re-deposited mixed topsoil (including turf) and clay subsoil with fragments

of modern white ceramic and modern glass throughout. A large number of these features were observed scattered across the areas as depressions in the topsoil and it is concluded that these features represent the remains of recent test pits/boreholes undertaken in the development area.

- 4.5 In all but seven of the trenches (Trenches 2, 4, 5, 6, 9, 14 and 18), numerous ceramic and rubble field drains were observed cutting the natural subsoil on various alignments. Trenching located in the vicinity of Peaston Hall (Trench 36) revealed no trace of any remains.
- 4.6 No significant archaeological features or finds were encountered within either application area.

5 CONCLUSION

- 5.1 No features or artefacts of archaeological significance were identified. No further works are recommended.

6 BIBLIOGRAPHIC REFERENCES

AOC 2008 Hunterfield & Newbyres, Gorebridge: Desk-Based Assessment. Unpubl AOC Archive Document.

McAdam, AD & Clarkson, ENK 1986 *Lothian Geology: An Excursion Guide*, Edinburgh.

SOEnd 1994 *National Planning Policy Guideline 5: Archaeology and Planning*. The Scottish Office Environment Department.

SOEnd 1994a *Planning Advice Note 42. Archaeology – The Planning Process and Scheduled Ancient Monument Procedures*. The Scottish Office Environment Department.

**Hunterfield Road & Newbyres, Gorebridge
Evaluation:
Data Structure Report**

Section 2: Appendices

APPENDIX 1

Trench Descriptions

Trench 1

<i>Dimensions</i>	100 m by 2 m
<i>Total Area</i>	200 m ²
<i>Orientation</i>	N/S
<i>Depth of Topsoil</i>	0.30-0.50 m
<i>Depth of Excavation</i>	0.30-0.50 m
<i>Significant Features</i>	One rubble field drain and one ceramic field drain observed at 41 m and 45 m from south end.
<i>Subsoil</i>	Friable light orange brown sandy clay with occasional small rounded and sub-angular stones and very occasional larger stones (0.40 m by 0.30 m by 0.15 m).
<i>Finds</i>	Moderate fragments of modern white ceramic through topsoil.

Trench 2

<i>Dimensions</i>	200 m by 2 m
<i>Total Area</i>	400 m ²
<i>Orientation</i>	N/S
<i>Depth of Topsoil</i>	0.30-0.50 m
<i>Depth of Excavation</i>	0.30-0.50 m
<i>Significant Features</i>	Rectangular feature observed 180 m from south end of trench, c. 2.5 m long by 0.80 m wide by 0.65 m deep. Filled by light grey brown soft clay. Modern white ceramic and glass recovered from fill. Remnant of backfilled test pit/borehole.
<i>Subsoil</i>	Friable light orange brown sandy clay with moderate small sub-rounded and sub-angular stones and very occasional larger angular stones (0.30 m by 0.25 m by 0.15 m).
<i>Finds</i>	Moderate fragments of modern white ceramic and modern glass through topsoil.

Trench 3

<i>Dimensions</i>	100 m by 2 m
<i>Total Area</i>	200 m ²
<i>Orientation</i>	NW/SE
<i>Depth of Topsoil</i>	0.40-0.60 m
<i>Depth of Excavation</i>	0.40-0.60 m
<i>Significant Features</i>	Frequent ceramic field drains observed running E/W at 15 m, 25 m, 38 m, 49 m, 55 m, 72 m, 85 m, and 90 m from the south-east end of the trench.
<i>Subsoil</i>	Friable light orange brown sandy clay with occasional patches of gravel, moderate small rounded stones and very occasional larger angular stones (0.30 m by 0.25 m by 0.15 m).
<i>Finds</i>	Moderate fragments of modern white ceramic and modern glass throughout topsoil.

Trench 4

<i>Dimensions</i>	100 m by 2 m
<i>Total Area</i>	200 m ²
<i>Orientation</i>	E/W
<i>Depth of Topsoil</i>	0.40 m
<i>Depth of Excavation</i>	0.40 m
<i>Significant Features</i>	No archaeology.
<i>Subsoil</i>	Friable light orange brown sandy clay with moderate small rounded stones.
<i>Finds</i>	Moderate fragments of modern white ceramic throughout topsoil.

Trench 5

<i>Dimensions</i>	100 m by 2 m
<i>Total Area</i>	200 m ²
<i>Orientation</i>	N/S
<i>Depth of Topsoil</i>	0.30-0.40 m
<i>Depth of Excavation</i>	0.30-0.40 m
<i>Significant Features</i>	No archaeology
<i>Subsoil</i>	Friable light orange brown sandy clay with occasional small rounded stones.
<i>Finds</i>	Moderate fragments of modern white ceramic and occasional modern glass through topsoil.

Trench 6

<i>Dimensions</i>	100 m by 2 m
<i>Total Area</i>	200 m ²
<i>Orientation</i>	E/W
<i>Depth of Topsoil</i>	0.25-0.40 m
<i>Depth of Excavation</i>	0.25-0.40 m
<i>Significant Features</i>	No archaeology
<i>Subsoil</i>	Friable light orange brown sandy clay with occasional small rounded stones.
<i>Finds</i>	Moderate fragments of modern white ceramic and modern glass throughout topsoil.

Trench 7

<i>Dimensions</i>	100 m by 2 m
<i>Total Area</i>	200 m ²
<i>Orientation</i>	E/W
<i>Depth of Topsoil</i>	0.25-0.35 m
<i>Depth of Excavation</i>	0.25-0.35 m
<i>Significant Features</i>	Ceramic field drain observed running ESE/WNW between 75-90 m from east end.
<i>Subsoil</i>	Friable light orange brown sandy clay with occasional small sub-rounded and sub-angular stones.
<i>Finds</i>	Occasional fragments of modern white ceramic and glass throughout topsoil.

Trench 8

<i>Dimensions</i>	100 m by 2 m
<i>Total Area</i>	200 m ²
<i>Orientation</i>	NE/SW
<i>Depth of Topsoil</i>	0.25-0.35 m
<i>Depth of Excavation</i>	0.25-0.35 m
<i>Significant Features</i>	Two ceramic field drains observed running E/W between 55-60 m and 72-80 m from north-east end of trench.
<i>Subsoil</i>	Friable light orange brown sandy clay with occasional small sub-rounded stones and very occasional larger sub-rounded stones (0.30 m by 0.25 m by 0.15 m).
<i>Finds</i>	Occasional fragments of modern white ceramic and modern glass through topsoil.

Trench 9

<i>Dimensions</i>	50 m by 2 m
<i>Total Area</i>	100 m ²
<i>Orientation</i>	WSW/ENE
<i>Depth of Topsoil</i>	0.35 m
<i>Depth of Excavation</i>	0.35-0.40 m
<i>Significant Features</i>	No archaeology.
<i>Subsoil</i>	Friable mid orange brown silty clay with moderate sub-rounded stones.

<i>Finds</i>	Moderate fragments of modern white ceramic and modern glass through topsoil.
Trench 10	
<i>Dimensions</i>	75 m by 2 m
<i>Total Area</i>	150 m ²
<i>Orientation</i>	E/W
<i>Depth of Topsoil</i>	0.35 m
<i>Depth of Excavation</i>	0.50 m
<i>Significant Features</i>	0.15 m thick mixed layer of light grey brown silty clay between topsoil and natural subsoil observed. Also several ceramic field drains observed running NW/SE between 11-21 m, 50-57 m, 53-58.5 m, 55-63 m, and 69.5 -75m from west end of trench.
<i>Subsoil</i>	Friable light orange brown sandy clay with moderate small-medium sub-angular stones.
<i>Finds</i>	Moderate fragments of modern white ceramic and modern glass throughout topsoil.
Trench 11	
<i>Dimensions</i>	50 m by 2 m
<i>Total Area</i>	100 m ²
<i>Orientation</i>	SW/NE
<i>Depth of Topsoil</i>	0.40 m
<i>Depth of Excavation</i>	0.40 m
<i>Significant Features</i>	Ceramic field drains observed running between 10-12 m, 16.5-19.5 m, 29.5-33 m, and 44-48.5 m from the south-west end of the trench.
<i>Subsoil</i>	Friable light orange brown sandy clay with moderate small-medium sub-rounded and sub-angular stones.
<i>Finds</i>	Moderate fragments of modern white ceramic and modern glass throughout topsoil.
Trench 12	
<i>Dimensions</i>	25 m by 2 m
<i>Total Area</i>	50 m ²
<i>Orientation</i>	SW/NE
<i>Depth of Topsoil</i>	0.40 m
<i>Depth of Excavation</i>	0.40 m
<i>Significant Features</i>	Two ceramic field drains observed at 6.40-7.50 m and 11.20-12.40 m from the south-west end of the trench.
<i>Subsoil</i>	Friable light orange brown sandy clay with moderate small-medium sub-rounded stones.
<i>Finds</i>	Moderate fragments of modern white ceramic and modern glass throughout topsoil.
Trench 13	
<i>Dimensions</i>	35 m by 2 m
<i>Total Area</i>	70 m ²
<i>Orientation</i>	E/W
<i>Depth of Topsoil</i>	0.45 m
<i>Depth of Excavation</i>	0.60-0.70 m
<i>Significant Features</i>	0.15-0.25 m thick mixed layer of light grey brown silty clay between topsoil and natural subsoil observed. Also two ceramic field drains observed running between 11-13 m and 20-24 m from west end of trench.
<i>Subsoil</i>	Friable light orange brown sandy clay with moderate small-medium sub-rounded stones.
<i>Finds</i>	Moderate fragments of modern white ceramic and modern glass throughout topsoil.

Trench 14

<i>Dimensions</i>	50 m by 2 m
<i>Total Area</i>	100 m ²
<i>Orientation</i>	E/W
<i>Depth of Topsoil</i>	0.40 m
<i>Depth of Excavation</i>	0.40 m
<i>Significant Features</i>	No archaeology
<i>Subsoil</i>	Friable light orange brown sandy clay with moderate small sub-rounded stones.
<i>Finds</i>	Moderate fragments of modern white ceramic and modern glass throughout topsoil.

Trench 15

<i>Dimensions</i>	50 m by 2 m
<i>Total Area</i>	100 m ²
<i>Orientation</i>	E/W
<i>Depth of Topsoil</i>	0.35-0.40 m
<i>Depth of Excavation</i>	0.35-0.40 m
<i>Significant Features</i>	Two ceramic field drains observed between 21-25 m and 34-36 m from west end of trench.
<i>Subsoil</i>	Friable light orange brown sandy clay with moderate small-medium sub-angular stones.
<i>Finds</i>	Moderate fragments of modern white ceramic and modern glass throughout topsoil.

Trench 16

<i>Dimensions</i>	75 m by 2 m
<i>Total Area</i>	150 m ²
<i>Orientation</i>	NE/SW
<i>Depth of Topsoil</i>	0.40-0.50 m
<i>Depth of Excavation</i>	0.40-0.50 m
<i>Significant Features</i>	Two rubble field drains observed at 17.20 m and 25 m and two ceramic field drains at 52 m and 65 m from north-east end of trench running E/W.
<i>Subsoil</i>	Very soft light yellow grey sand with very occasional small lenses of gravel.
<i>Finds</i>	Moderate fragments of modern white ceramic and modern glass throughout topsoil.

Trench 17

<i>Dimensions</i>	50 m by 2 m
<i>Total Area</i>	100 m ²
<i>Orientation</i>	NW/SE
<i>Depth of Topsoil</i>	0.30 m
<i>Depth of Excavation</i>	0.30 m
<i>Significant Features</i>	One ceramic field drain observed running E/W from 0-23 m from south-east end of trench.
<i>Subsoil</i>	Friable light orange brown sandy clay with frequent small sub-rounded and sub-angular stones.
<i>Finds</i>	Moderate fragments of modern white ceramic and modern glass throughout topsoil.

Trench 18

<i>Dimensions</i>	50 m by 2 m
<i>Total Area</i>	100 m ²
<i>Orientation</i>	N/S
<i>Depth of Topsoil</i>	0.30 m
<i>Depth of Excavation</i>	0.30 m

<i>Significant Features</i>	No archaeology.
<i>Subsoil</i>	Friable light orange brown sandy clay with frequent small sub-rounded stones.
<i>Finds</i>	Moderate fragments of modern white ceramic and modern glass throughout topsoil.
Trench 19	
<i>Dimensions</i>	50 m by 2 m
<i>Total Area</i>	100 m ²
<i>Orientation</i>	N/S
<i>Depth of Topsoil</i>	0.25-0.35 m
<i>Depth of Excavation</i>	0.35-0.70 m
<i>Significant Features</i>	0.25-0.30 m thick mixed layer of light grey brown silty clay between topsoil and natural subsoil observed in natural dip in ground. Frequent patches of alluvial mid brown gravel observed in south end of trench. Also rubble field drain observed at 0.30-3.30 m from south end of trench and at 3.20-6.20 m in an area of soft wet recent backfill (including turf) was noted probably from a geological borehole.
<i>Subsoil</i>	Friable mid orange brown sandy clay with frequent small sub-rounded stones and very occasional small fragments of coal.
<i>Finds</i>	Moderate fragments of modern white ceramic and modern glass throughout topsoil.
Trench 20	
<i>Dimensions</i>	25 m by 2 m
<i>Total Area</i>	50 m ²
<i>Orientation</i>	ESE/WNW
<i>Depth of Topsoil</i>	0.30 m
<i>Depth of Excavation</i>	0.30 m
<i>Significant Features</i>	One rubble field drain observed running NW/SE from 18.3-23.7 m from east-south-east end of trench.
<i>Subsoil</i>	Friable light orange brown sandy clay with frequent small sub-rounded stones.
<i>Finds</i>	Moderate fragments of modern white ceramic and modern glass throughout topsoil.
Trench 21	
<i>Dimensions</i>	50 m by 2 m
<i>Total Area</i>	100 m ²
<i>Orientation</i>	SE/NW
<i>Depth of Topsoil</i>	0.30 m
<i>Depth of Excavation</i>	0.30 m
<i>Significant Features</i>	Six ceramic field drains observed running NE/SW at 1 m, 4 m, 21 m, 26 m, 34 m and 45.7 m from south-east end of trench.
<i>Subsoil</i>	Friable light orange brown sandy clay with moderate small-medium sub-angular stones.
<i>Finds</i>	Moderate fragments of modern white ceramic and modern glass throughout topsoil.
Trench 22	
<i>Dimensions</i>	50 m by 2 m
<i>Total Area</i>	100 m ²
<i>Orientation</i>	SSE/NNW
<i>Depth of Topsoil</i>	0.25-0.30 m
<i>Depth of Excavation</i>	0.30-0.35 m
<i>Significant Features</i>	Four ceramic field drains observed running NE/SW at 8.5 m, 12.3 m, 23.6 m and 38.2 m from south-south-east end of trench.
<i>Subsoil</i>	Friable light orange brown sandy clay with moderate small-medium sub-rounded stones.

Finds Moderate fragments of modern white ceramic and modern glass throughout topsoil.

Trench 23

Dimensions 25 m by 2 m

Total Area 50 m²

Orientation E/W

Depth of Topsoil 0.30 m

Depth of Excavation 0.30 m

Significant Features One ceramic field drain observed running NE/SW at 23.8-25.0 m from east end of trench.

Subsoil Friable light orange brown sandy clay with moderate small sub-rounded stones.

Finds Moderate fragments of modern white ceramic and modern glass throughout topsoil.

Trench 24

Dimensions 100 m by 2 m

Total Area 200 m²

Orientation E/W

Depth of Topsoil 0.30 m

Depth of Excavation 0.30-0.60 m

Significant Features Nine ceramic field drains observed running NE/SW at 8.7 m, 33 m, 54 m, 60 m, 76 m, 85 m and 95 m from east end of trench.

Subsoil Friable mid orange brown silty clay with moderate small sub-rounded stones.

Finds Moderate fragments of modern white ceramic and modern glass throughout topsoil.

Trench 25

Dimensions 100 m by 2 m

Total Area 200 m²

Orientation SE/NW

Depth of Topsoil 0.20 m

Depth of Excavation 0.70 m

Significant Features Fifteen ceramic field drains observed running NE/SW at 3 m, 7 m, 10 m, 16.7 m, 23.5 m, 30 m, 37.5 m, 44 m, 58.4 m, 65 m, 72 m, 74.2 m, 79 m, 86.3 m and 90 m from south-east end of trench.

Subsoil Friable mid orange brown silty clay with moderate small sub-rounded stones.

Finds Moderate fragments of modern white ceramic and modern glass throughout topsoil.

Trench 26

Dimensions 100 m by 2 m

Total Area 200 m²

Orientation S/N

Depth of Topsoil 0.40 m

Depth of Excavation 0.75 m

Significant Features Nineteen ceramic field drains observed running E/W at 2.5 m, 7.8 m, 13 m, 18.5 m, 23.8 m, 28 m, 34.3 m, 37.3 m, 45 m, 50 m, 55.2 m, 61 m, 67.2 m, 72.4 m, 77.4 m, 83 m, 88 m, 93.5 m and 98 m from south end of trench.

Subsoil Friable mid orange brown silty clay with occasional small sub-rounded stones and very occasional rounded boulders.

Finds Moderate fragments of modern white ceramic and modern glass throughout topsoil.

Trench 27

Dimensions 100 m by 2 m

Total Area 200 m²

<i>Orientation</i>	E/W
<i>Depth of Topsoil</i>	0.30 m
<i>Depth of Excavation</i>	0.60 m
<i>Significant Features</i>	One ceramic field drain observed running E/W at 45-100 m from east end of trench.
<i>Subsoil</i>	Friable mid orange brown silty clay with occasional small sub-rounded stones and occasional sub-angular boulders.
<i>Finds</i>	Moderate fragments of modern white ceramic and modern glass throughout topsoil.

Trench 28

<i>Dimensions</i>	100 m by 2 m
<i>Total Area</i>	200 m ²
<i>Orientation</i>	SE/NW
<i>Depth of Topsoil</i>	0.20 m
<i>Depth of Excavation</i>	0.50 m
<i>Significant Features</i>	Fifteen ceramic field drains observed running NE/SW at 0.3 m, 3 m, 5 m, 11.7 m, 17 m, 23 m, 29 m, 34 m, 41.2 m, 47.5 m, 53.5 m, 74.8 m, 80.8 m, 86.4 m and 96 m from south-east end of trench.
<i>Subsoil</i>	Friable mid orange brown silty clay with moderate small sub-rounded stones and occasional sub-angular boulders.
<i>Finds</i>	Moderate fragments of modern white ceramic and modern glass throughout topsoil.

Trench 29

<i>Dimensions</i>	50 m by 2 m
<i>Total Area</i>	100 m ²
<i>Orientation</i>	E/W
<i>Depth of Topsoil</i>	0.20 m
<i>Depth of Excavation</i>	0.60 m
<i>Significant Features</i>	Three ceramic field drains observed running NW/SE at 5 m, 30 m and 34 m from west end of trench.
<i>Subsoil</i>	Friable mid orange brown silty clay with moderate small sub-rounded stones and occasional sub-angular boulders.
<i>Finds</i>	Moderate fragments of modern white ceramic and modern glass throughout topsoil.

Trench 30

<i>Dimensions</i>	50 m by 2 m
<i>Total Area</i>	100 m ²
<i>Orientation</i>	NW/SE
<i>Depth of Topsoil</i>	0.20 m
<i>Depth of Excavation</i>	0.50 m
<i>Significant Features</i>	Five ceramic field drains observed running NE/SW at 18 m, 27 m, 34.8 m, 35.8 m and 45 m from north-west end of trench.
<i>Subsoil</i>	Friable mid orange brown silty clay with moderate small sub-rounded stones and occasional sub-angular boulders.
<i>Finds</i>	Moderate fragments of modern white ceramic and modern glass throughout topsoil.

Trench 31

<i>Dimensions</i>	100 m by 2 m
<i>Total Area</i>	200 m ²
<i>Orientation</i>	E/W
<i>Depth of Topsoil</i>	0.30 m
<i>Depth of Excavation</i>	0.70 m

<i>Significant Features</i>	Six ceramic field drains observed running NW/SE at 1 m, 19 m, 44 m, 60 m, 72 m, and 88 m from north-west end of trench.
<i>Subsoil</i>	Friable mid orange brown silty clay with moderate small sub-rounded stones and occasional sub-angular boulders.
<i>Finds</i>	Moderate fragments of modern white ceramic and modern glass throughout topsoil.

Trench 32

<i>Dimensions</i>	50 m by 2 m
<i>Total Area</i>	100 m ²
<i>Orientation</i>	E/W
<i>Depth of Topsoil</i>	0.35 m
<i>Depth of Excavation</i>	0.80 m
<i>Significant Features</i>	Four ceramic field drains observed running NW/SE at 2.7 m, 12.4 m, 17.7 m, and 22 m from west end of trench. Also an old metal water pipe for the nearby cottages was noted at 48 m running NE/SW.
<i>Subsoil</i>	Friable mid orange brown silty clay with moderate small sub-rounded stones and occasional sub-angular boulders.
<i>Finds</i>	Moderate fragments of modern white ceramic and modern glass throughout topsoil.

Trench 33

<i>Dimensions</i>	50 m by 2 m
<i>Total Area</i>	100 m ²
<i>Orientation</i>	E/W
<i>Depth of Topsoil</i>	0.35 m
<i>Depth of Excavation</i>	0.80 m
<i>Significant Features</i>	Six ceramic field drains observed running NW/SE at 4.3 m, 10 m, 13.2 m, 19 m, 23.4 m and 31.5 m from west end of trench.
<i>Subsoil</i>	Friable mid orange brown silty clay with moderate small sub-rounded stones and occasional sub-angular boulders.
<i>Finds</i>	Moderate fragments of modern white ceramic and modern glass throughout topsoil.

Trench 34

<i>Dimensions</i>	100 m by 2 m
<i>Total Area</i>	200 m ²
<i>Orientation</i>	NW/SE
<i>Depth of Topsoil</i>	0.25 m
<i>Depth of Excavation</i>	0.70 m
<i>Significant Features</i>	Twenty-three ceramic field drains observed running NE/SW at 8 m, 15.5 m, 23 m, 27 m, 30.7 m, 34.4 m, 38 m, 42 m, 45.7 m, 50 m, 53.5 m, 57.3 m, 60.5 m, 64.5 m, 69 m, 72.5 m, 76.8 m, 80 m, 84 m, 88 m, 91.6 m, 95 m and 98 m from north-west end of trench.
<i>Subsoil</i>	Friable mid orange brown silty clay with moderate small sub-rounded stones and occasional sub-angular boulders.
<i>Finds</i>	Moderate fragments of modern white ceramic and modern glass throughout topsoil.

Trench 35

<i>Dimensions</i>	100 m by 2 m
<i>Total Area</i>	200 m ²
<i>Orientation</i>	NW/SE
<i>Depth of Topsoil</i>	0.20 m
<i>Depth of Excavation</i>	0.70 m

Significant Features Fourteen ceramic field drains observed running NE/SW at 2 m, 4.2 m, 12 m, 19.5 m, 26.7 m, 35 m, 43.4 m, 51.4 m, 53 m, 59.8 m, 75.5 m, 80 m, 91.8 m, and 99.2 m from north-west end of trench.

Subsoil Friable mid orange brown silty clay with moderate small sub-rounded stones and occasional sub-angular boulders.

Finds Moderate fragments of modern white ceramic and modern glass throughout topsoil.

Trench 36

Dimensions 100 m by 2 m

Total Area 200 m²

Orientation SSE/NNW

Depth of Topsoil 0.30 m

Depth of Excavation 0.40 m

Significant Features Four ceramic field drains observed running E/W at 36 m, 42 m, 62.8 m and 82.3 m from north-north-west end of trench.

Subsoil Friable light orange brown sandy clay with frequent small sub-rounded stones and occasional sub-rounded boulders.

Finds Moderate fragments of modern white ceramic and modern glass throughout topsoil.

Trench 37

Dimensions 100 m by 2 m

Total Area 200 m²

Orientation NW/SE

Depth of Topsoil 0.30 m

Depth of Excavation 0.55 m

Significant Features 0.22 m thick mixed layer of light grey brown silty clay between topsoil and natural subsoil observed for the first fifteen metres. One rubble field drain observed running N/S at 45.7 m. Five ceramic field drains observed running E/W at 55.9 m, 62.8 m, 74 m, 82.3 m and 90.2 m from north-north-west end of trench.

Subsoil Friable light orange brown sandy clay with moderate small sub-rounded stones.

Finds Moderate fragments of modern white ceramic and modern glass throughout topsoil.

Trench 38

Dimensions 75 m by 2 m

Total Area 150 m²

Orientation NE/SW

Depth of Topsoil 0.35 m

Depth of Excavation 0.35 m

Significant Features One rubble field drain observed running SE/NW at 67.1 m. Five ceramic field drains observed running E/W at 10.8 m, 17.6 m, 23.5 m, 36.1 m and 49.1 m from north-east end of trench.

Subsoil Friable mid orange brown sandy clay with moderate small sub-rounded stones.

Finds Moderate fragments of modern white ceramic and modern glass throughout topsoil.

Trench 39

Dimensions 100 m by 2 m

Total Area 200 m²

Orientation NNW/SSE

Depth of Topsoil 0.30 m

Depth of Excavation 0.30 m

<i>Significant Features</i>	Three ceramic field drains observed running E/W at 6.5 m, 12.7 m and 19.6 m. Nine rubble field drains observed running NE/SW at 45.1 m, 50.4 m, 55.6 m, 60.9 m, 66.9 m, 71.5 m, 72.4 m 77.7 m and 93.9 m from north-north-west end of trench.
<i>Subsoil</i>	Friable light orange brown sandy clay with moderate small sub-rounded stones.
<i>Finds</i>	Moderate fragments of modern white ceramic and modern glass throughout topsoil.

Trench 40

<i>Dimensions</i>	100 m by 2 m
<i>Total Area</i>	200 m ²
<i>Orientation</i>	ENE/WSW
<i>Depth of Topsoil</i>	0.25 m
<i>Depth of Excavation</i>	0.50 m
<i>Significant Features</i>	0.25 m thick mixed layer of light grey brown silty clay between topsoil and natural subsoil observed for the first 34 metres. One ceramic field drain observed from 0-13.4 m. Two rubble field drains observed running SE/NW at 9.5 m and 65.8 m from west-south-west end of trench.
<i>Subsoil</i>	Soft light yellow orange silty sand for first 34 m then friable light orange brown sandy clay with moderate small sub-rounded stones.
<i>Finds</i>	Moderate fragments of modern white ceramic and modern glass throughout topsoil.

Trench 41

<i>Dimensions</i>	75 m by 2 m
<i>Total Area</i>	150 m ²
<i>Orientation</i>	E/W
<i>Depth of Topsoil</i>	0.30 m
<i>Depth of Excavation</i>	0.35 m
<i>Significant Features</i>	One ceramic field drain observed running NW/SE at 42.9 m. One rubble field drain observed running NW/SE at 64.9 m from east end of trench.
<i>Subsoil</i>	Friable light orange brown sandy clay with moderate small sub-rounded stones.
<i>Finds</i>	Moderate fragments of modern white ceramic and modern glass throughout topsoil.

Trench 42

<i>Dimensions</i>	100 m by 2 m
<i>Total Area</i>	200 m ²
<i>Orientation</i>	SW/NE
<i>Depth of Topsoil</i>	0.30 m
<i>Depth of Excavation</i>	0.35 m
<i>Significant Features</i>	One rubble field drain observed running NNE/SSW at 1.4 m. Five ceramic field drains observed running NW/SE at 38.1 m, 45.4 m, 53.2 m, 67.7 m and 88.4 m from south-west end of trench.
<i>Subsoil</i>	Friable mid orange brown sandy clay with frequent small sub-rounded stones and occasional larger stones.
<i>Finds</i>	Moderate fragments of modern white ceramic and modern glass throughout topsoil.

Trench 43

<i>Dimensions</i>	100 m by 2 m
<i>Total Area</i>	200 m ²
<i>Orientation</i>	SW/NE
<i>Depth of Topsoil</i>	0.30 m
<i>Depth of Excavation</i>	0.30 m

<i>Significant Features</i>	Four ceramic field drains observed running NE/SW at 47.1 m, 63.3 m, 79.0 m and 94.7 m from south-west end of trench. From 52.6-63.5 m a layer of coal waste 0.10 m thick was observed between topsoil and natural subsoil.
<i>Subsoil</i>	Friable light orange brown sandy clay with frequent small sub-rounded stones and occasional larger stones.
<i>Finds</i>	Moderate fragments of modern white ceramic and modern glass throughout topsoil.

Trench 44

<i>Dimensions</i>	75 m by 2 m
<i>Total Area</i>	150 m ²
<i>Orientation</i>	E/W
<i>Depth of Topsoil</i>	0.30 m
<i>Depth of Excavation</i>	0.35 m
<i>Significant Features</i>	Three ceramic field drains observed running NW/SE at 8.7 m, 31.8 m and 42.7 m from west end of trench.
<i>Subsoil</i>	Friable light orange brown sandy clay with occasional small sub-rounded stones.
<i>Finds</i>	Moderate fragments of modern white ceramic and modern glass throughout topsoil.

Trench 45

<i>Dimensions</i>	50 m by 2 m
<i>Total Area</i>	100 m ²
<i>Orientation</i>	WSW/ENE
<i>Depth of Topsoil</i>	0.30 m
<i>Depth of Excavation</i>	0.30 m
<i>Significant Features</i>	Two ceramic field drains observed running SW/NE at 0-6.4 m and 35.1 m from west-south-west end of trench. One rubble field drain observed on the same alignment at 35.1 m.
<i>Subsoil</i>	Friable light orange brown sandy clay with moderate small sub-rounded stones and occasional larger stones.
<i>Finds</i>	Moderate fragments of modern white ceramic and modern glass throughout topsoil.

Trench 46

<i>Dimensions</i>	50 m by 2 m
<i>Total Area</i>	100 m ²
<i>Orientation</i>	E/W
<i>Depth of Topsoil</i>	0.30-0.50 m
<i>Depth of Excavation</i>	0.30-0.50 m
<i>Significant Features</i>	Eight ceramic field drains observed running N/S at 12 m, 18 m, 23.4 m, 26.6 m, 28.6 m, 33.7 m, 36.7 m and 41.9 m from west end of trench.
<i>Subsoil</i>	Friable mid orange brown sandy clay with moderate small sub-rounded stones and more coal waste observed throughout.
<i>Finds</i>	Moderate fragments of modern white ceramic and modern glass throughout topsoil.

APPENDIX 2

Photographic Record

Black & White Print Film 1

Frame	Area	Description	From
1-2		Registration shots	
3-4	C	General shot of Trench 1	S
5-6	C	General shot of Trench 2	S
7-8	C	General shot of Trench 2	N
9-10	C	Pre-ex shot of rectangular feature in north end of Trench 2	S
11-12	C	General shot of Trench 3	NW
13-14	C	General shot of Trench 4	E
15-16	C	General shot of Trench 5	N
17-18	C	General shot of Trench 6	E
19-20	C	General shot of Trench 7	E
21-22	C	General shot of Trench 8	E
23-24	C	Detail of borehole feature in Trench 2 – post-ex	S
25-26	C	West facing section of borehole feature in Trench 2	W
27-28	C	General shot of Trench 9	ENE
29-30	C	General shot of Trench 10	E
31-32	C	General shot of Trench 11	E
33-34	C	General shot of Trench 12	SW
35-36	C	General shot of Trench 13	W

Black & White Print Film 2

Frame	Area	Description	From
1-2		Registration shots	
3-4	C	General shot of Trench 14	E
5-6	C	General shot of Trench 15	E
7-8	NB	General shot of Trench 16	WNW
9-10	NB	General shot of Trench 17	NW
11-12	B	General shot of Trench 33	W
13-14	B	General shot of Trench 32	W
15-16	B	General shot of Trench 31	NW
17-18	B	General shot of Trench 34	SE
19-20	B	General shot of Trench 29	E
21-22	B	General shot of Trench 30	E
23-24	B	General shot of Trench 25	SE
25-26	B	General shot of Trench 24	E
27-28	B	General shot of Trench 26	SW
29-30	B	General shot of Trench 27	E
31-32	B	General shot of Trench 28	S
33-34	B	General shot of Trench 35	SE
35-36	NB	General shot of Trench 18	N

Black & White Print Film 3

Frame	Area	Description	From
1-2		Registration shots	
3-4	NB	General shot of Trench 21	SE
5-6	NB	General shot of Trench 22	SSE
7-8	NB	General shot of Trench 23	W
9-10	A	General shot of Trench 36	SSE
11-12	A	General shot of Trench 37	SE
13-14	A	General shot of Trench 38	SW
15-16	A	General shot of Trench 39	SSE
17-18	A	General shot of Trench 40	WSW
19-20	A	General shot of Trench 41	W
21-22	A	General shot of Trench 42	NW
23-24	A	General shot of Trench 43	SW
25-26	A	General shot of Trench 44	E
27-28	A	General shot of Trench 45	ENE
29-30	A	General shot of Trench 46	E

Colour Slide Film 1

Frame	Area	Description	From
1-2		Registration shots	
3-4	C	General shot of Trench 1	S
5-6	C	General shot of Trench 2	S
7-8	C	General shot of Trench 2	N
9-10	C	Pre-ex shot of rectangular feature in north end of Trench 2	S
11-12	C	General shot of Trench 3	NW
13-14	C	General shot of Trench 4	E
15-16	C	General shot of Trench 5	N
17-18	C	General shot of Trench 6	E
19-20	C	General shot of Trench 7	E
21-22	C	General shot of Trench 8	E
23-24	C	Detail of borehole feature in Trench 2 – post-ex	S
25-26	C	West facing section of borehole feature in Trench 2	W
27-28	C	General shot of Trench 9	ENE
29-30	C	General shot of Trench 10	E
31-32	C	General shot of Trench 11	E
33-34	C	General shot of Trench 12	SW
35-36	C	General shot of Trench 13	W

Colour Slide Film 2

Frame	Area	Description	From
1-2		Registration shots	
3-4	C	General shot of Trench 14	E
5-6	C	General shot of Trench 15	E
7-8	NB	General shot of Trench 16	WNW
9-10	NB	General shot of Trench 17	NW

11-12	B	General shot of Trench 33	W
13-14	B	General shot of Trench 32	W
15-16	B	General shot of Trench 31	NW
17-18	B	General shot of Trench 34	SE
19-20	B	General shot of Trench 29	E
21-22	B	General shot of Trench 30	E
23-24	B	General shot of Trench 25	SE
25-26	B	General shot of Trench 24	E
27-28	B	General shot of Trench 26	SW
29-30	B	General shot of Trench 27	E
31-32	B	General shot of Trench 28	S
33-34	B	General shot of Trench 35	SE
35-36	NB	General shot of Trench 18	N

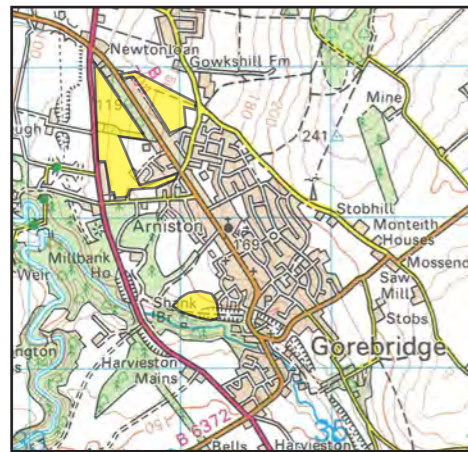
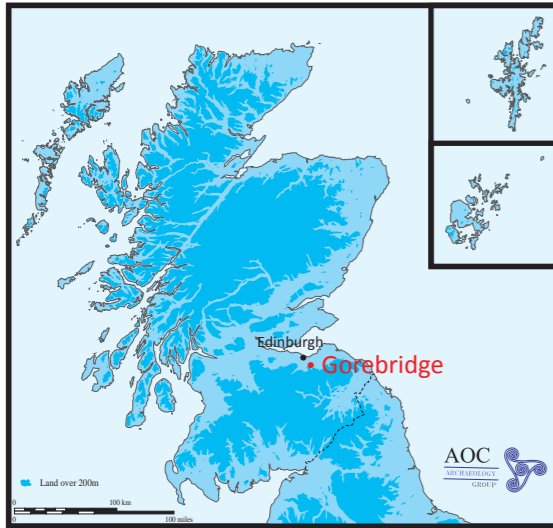
Colour Slide Film 3

Frame	Area	Description	From
1-2		Registration shots	
3-4	NB	General shot of Trench 21	SE
5-6	NB	General shot of Trench 22	SSE
7-8	NB	General shot of Trench 23	W
9-10	A	General shot of Trench 36	SSE
11-12	A	General shot of Trench 37	SE
13-14	A	General shot of Trench 38	SW
15-16	A	General shot of Trench 39	SSE
17-18	A	General shot of Trench 40	WSW
19-20	A	General shot of Trench 41	W
21-22	A	General shot of Trench 42	NW
23-24	A	General shot of Trench 43	SW
25-26	A	General shot of Trench 44	E
27-28	A	General shot of Trench 45	ENE
29-30	A	General shot of Trench 46	E

APPENDIX 3

Discovery and Excavation in Scotland Report

LOCAL AUTHORITY:	Midlothian Council
PROJECT TITLE/SITE NAME	Hunterfield Road and Newbyres, Gorebridge Evaluation
PROJECT CODE:	AOC 20933
PARISH:	Cockpen
NAME OF CONTRIBUTOR:	Victoria Clements
NAME OF ORGANISATION:	AOC Archaeology Group
TYPE(S) OF PROJECT:	Archaeological Evaluation
NMRS NO(S)	N/A
SITE/MONUMENT TYPE(S):	N/A
SIGNIFICANT FINDS:	None
NGR (2 letters, 6 figures)	Newbyres at NT 340 614; Hunterfield Road at NT 336 627
START DATE (this season)	13 th March 2008
END DATE (this season)	24 th March 2008
PREVIOUS WORK (incl. DES ref.)	N/A
MAIN (NARRATIVE) DESCRIPTION: (May include information from other fields)	An archaeological evaluation was carried out on land parcels in advance of proposed residential development at Newbyres and Hunterfield Road, Gorebridge, Midlothian. Forty-six trenches with a combined basal area of 7070 m ² were opened. No features or artefacts of archaeological significance were identified.
PROPOSED FUTURE WORK:	None
CAPTION(S) FOR ILLUSTRS:	---
SPONSOR OR FUNDING BODY:	Persimmon Homes East Scotland Ltd
ADDRESS OF MAIN CONTRIBUTOR:	Edgefield Road Industrial Estate, Loanhead, Midlothian, EH20 9SY
EMAIL ADDRESS:	admin@aocscot.co.uk
ARCHIVE LOCATION (intended/deposited)	Archive to be deposited in NMRS



Key

- Proposed development areas
- Evaluation trench


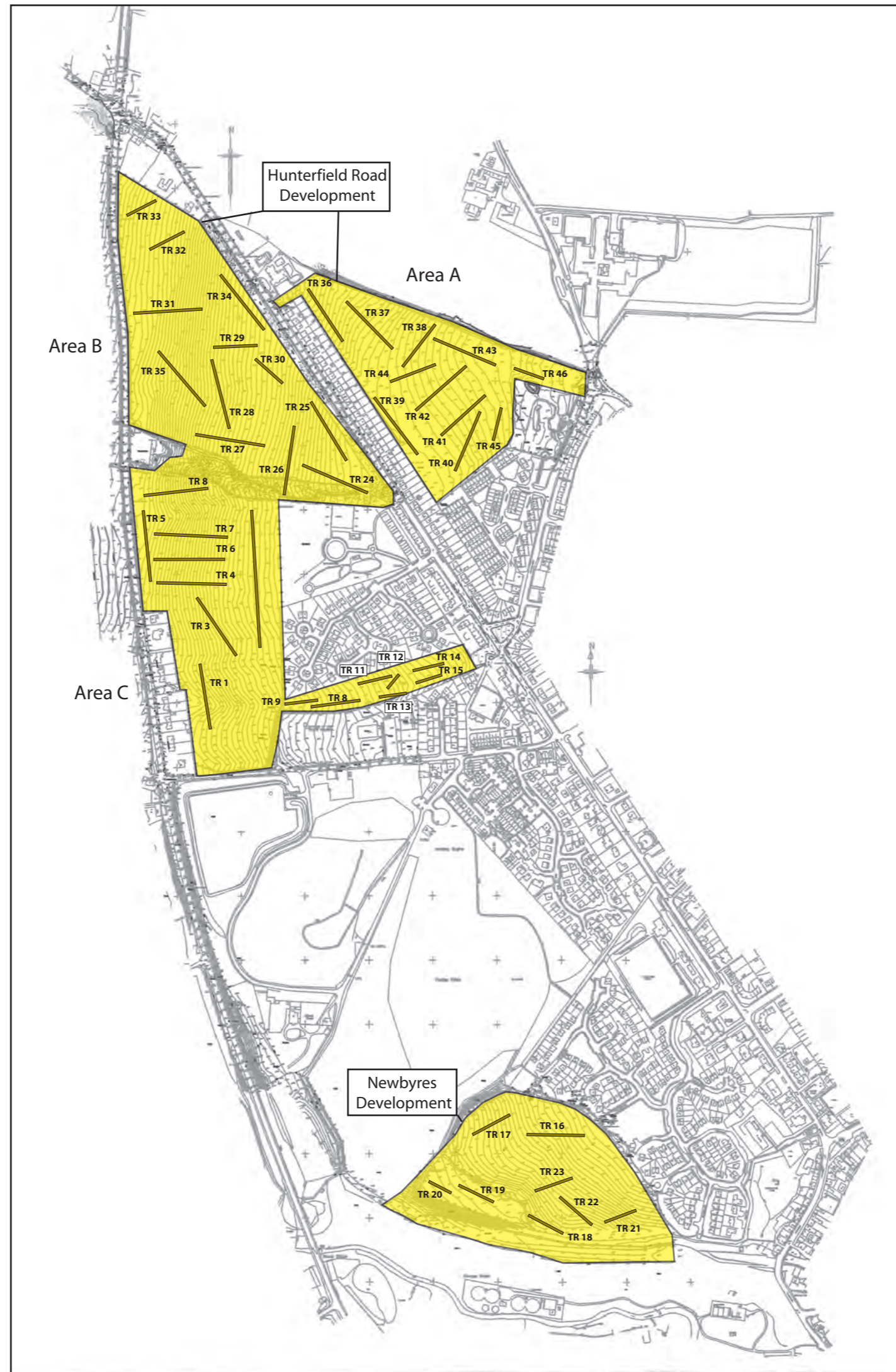
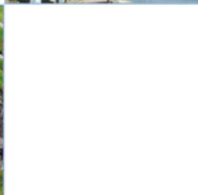
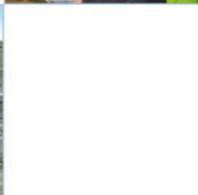
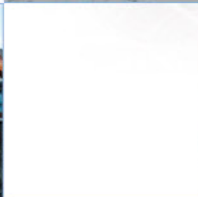
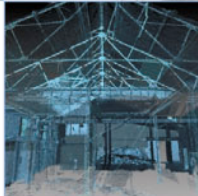
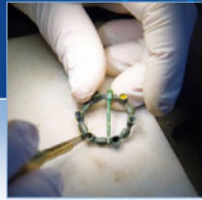



Figure 1: Site location and evaluation trench plan



AOC Archaeology Group, Edgefield Industrial Estate, Edgefield Road, Loanhead EH20 9SY
tel: 0131 440 3593 | fax: 0131 440 3422 | e-mail: admin@aocarchaeology.com

www.aocarchaeology.com