

Figure 1: Site Location

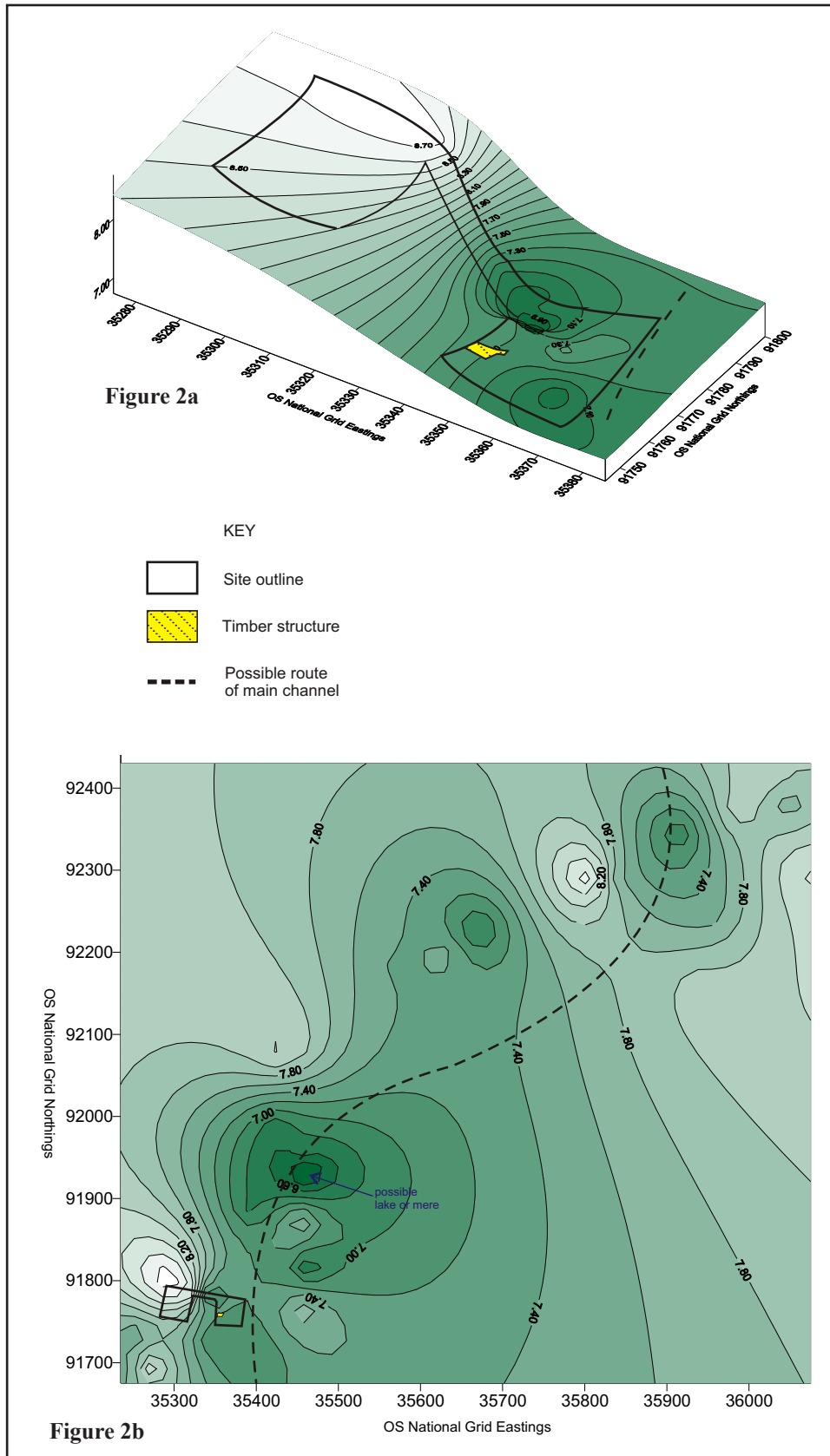


Figure 2: Surfer Plot of the pre-Holocene Surface in the Vicinity of the Site (From Georch Archive Report - MoLAS 2007)



Figure 3: Red Deer and Roe Deer Antlers in the Early Mesolithic Peat

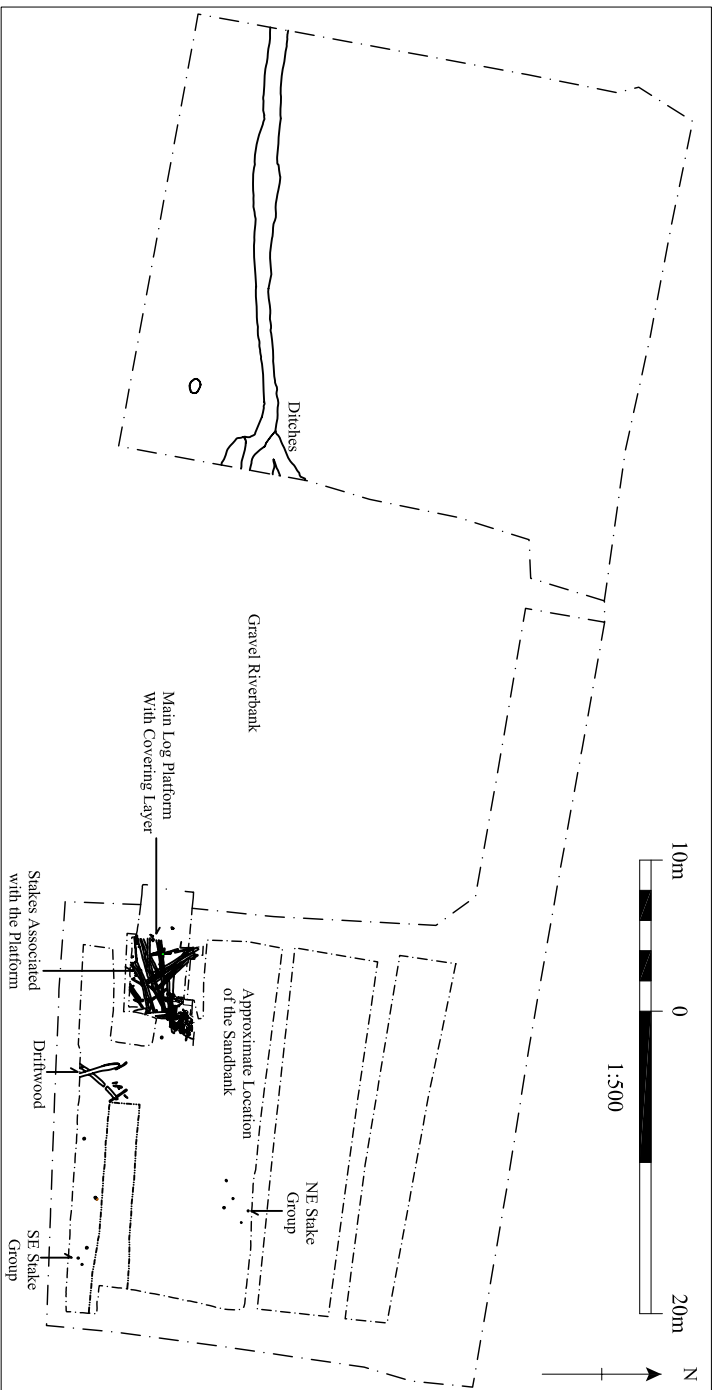


Figure 4: Early Saxon Timber, Roundwood Structures and Other Features

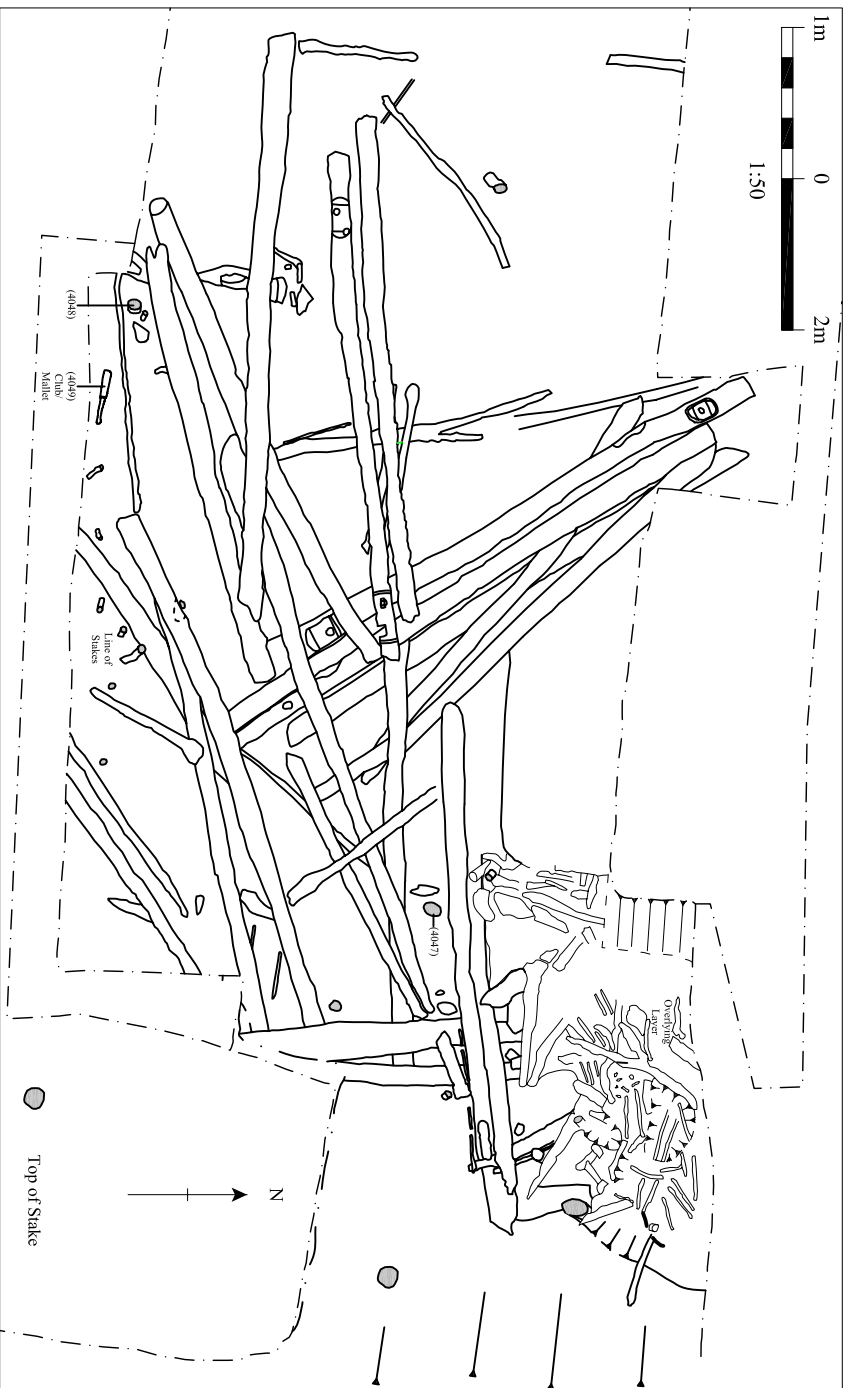


Figure 5: Main Log Platform



Figure 6: Main Log Platform with Covering “Brushwood” Layer in Foreground During Excavation

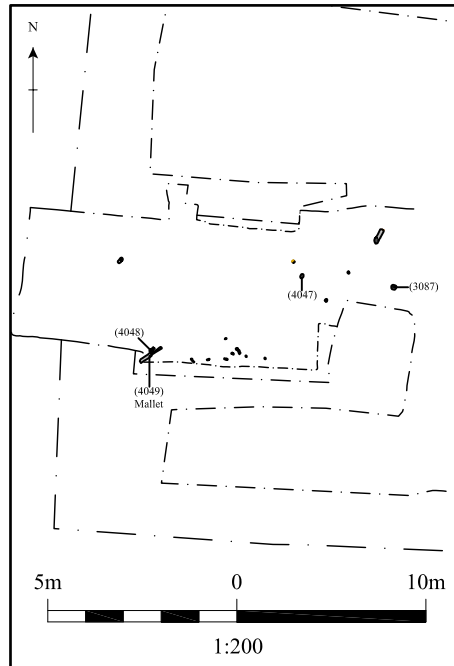


Figure 7a: Plan of the Stakes Along the Southern Edge of the Log Platform, Showing their Alignment

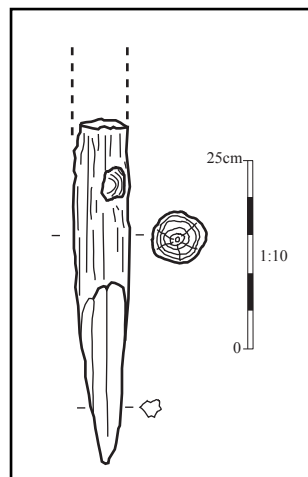


Figure 7b: Oak Stake Tip [4048] from the Main Platform

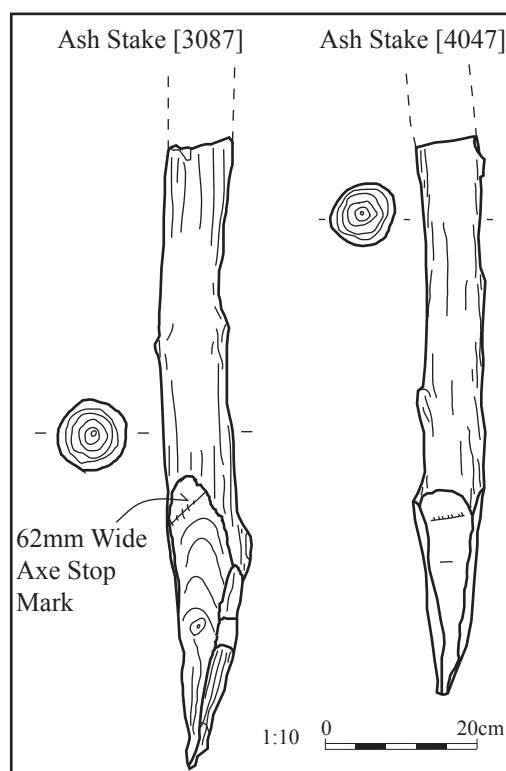


Figure 8: Ash Stakes From the East Side of the Main Log Platform

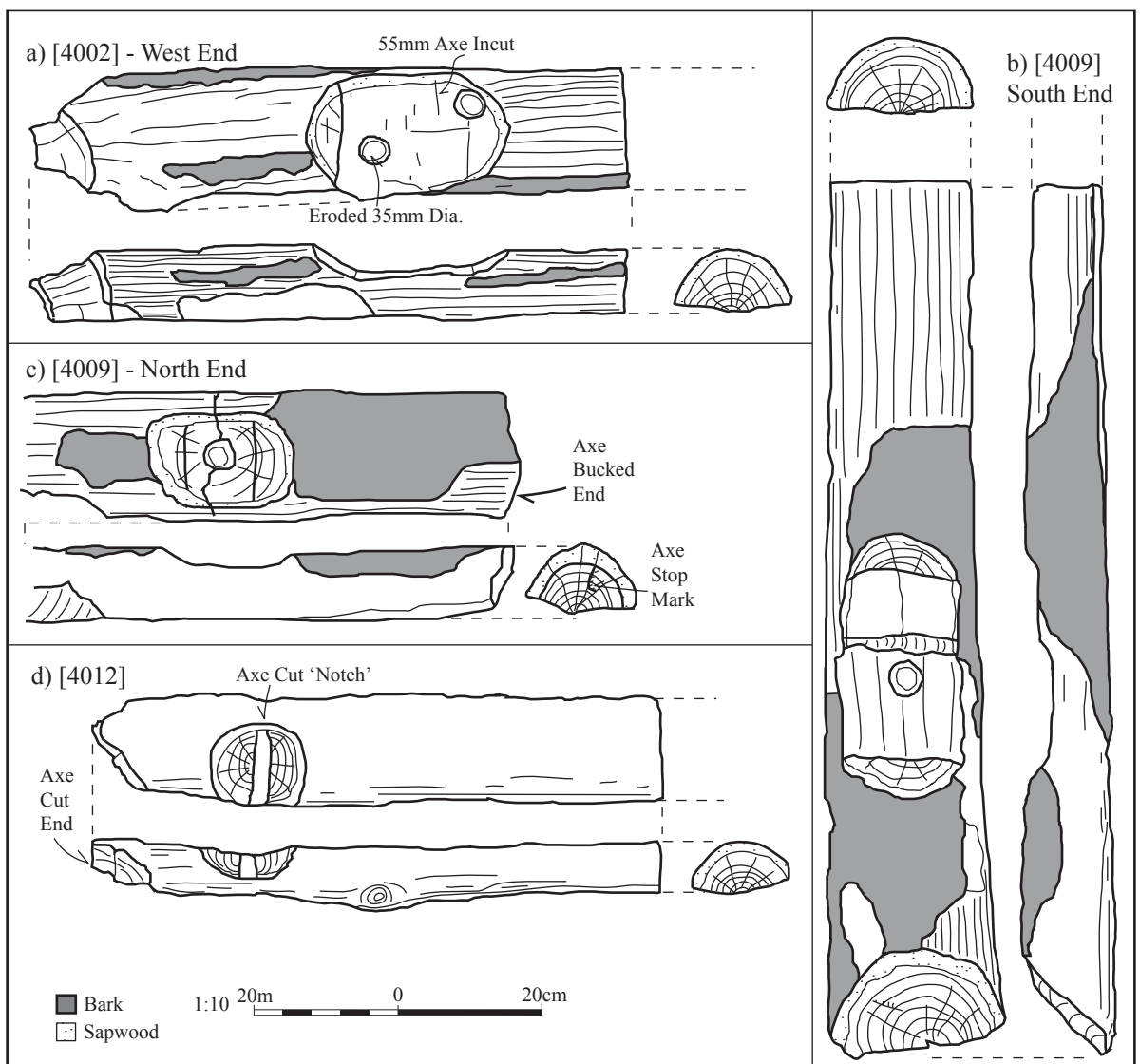


Figure 9: Details of the Joints on the Ends of the Half log Beams

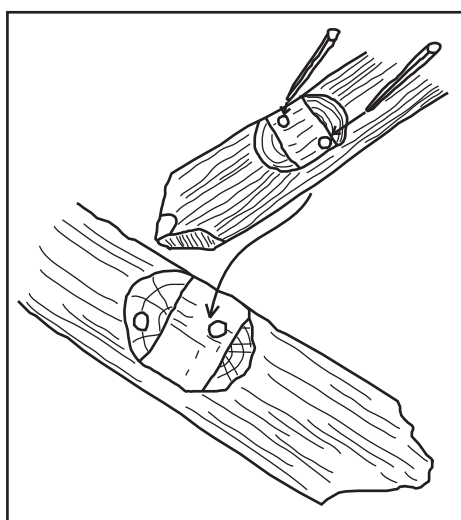


Figure 10: Diagram Showing How the relict Halving Joints and Wooden Peg Fastenings in the Half Log Beams were Originally Used

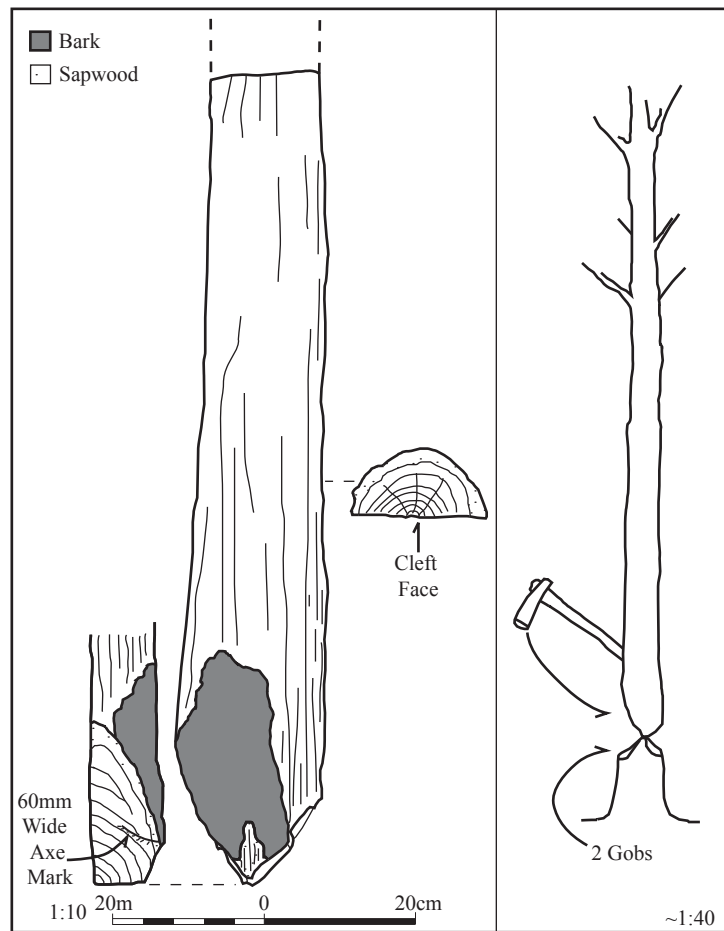


Figure 11: The Axe Cut Felled End of Oak Beam [4043]

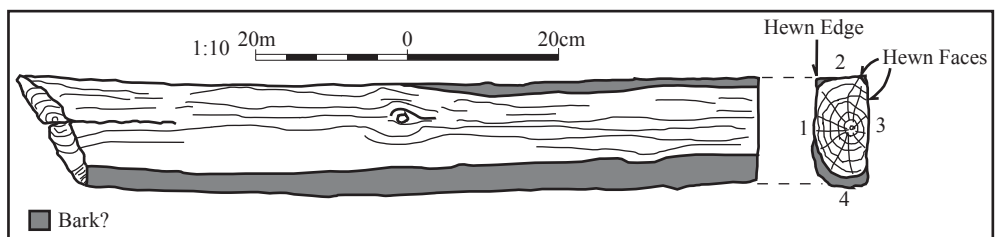


Figure 12: Oak Beam [4005] Hewn to a Sub-Rectangular Cross Section from a Whole Log

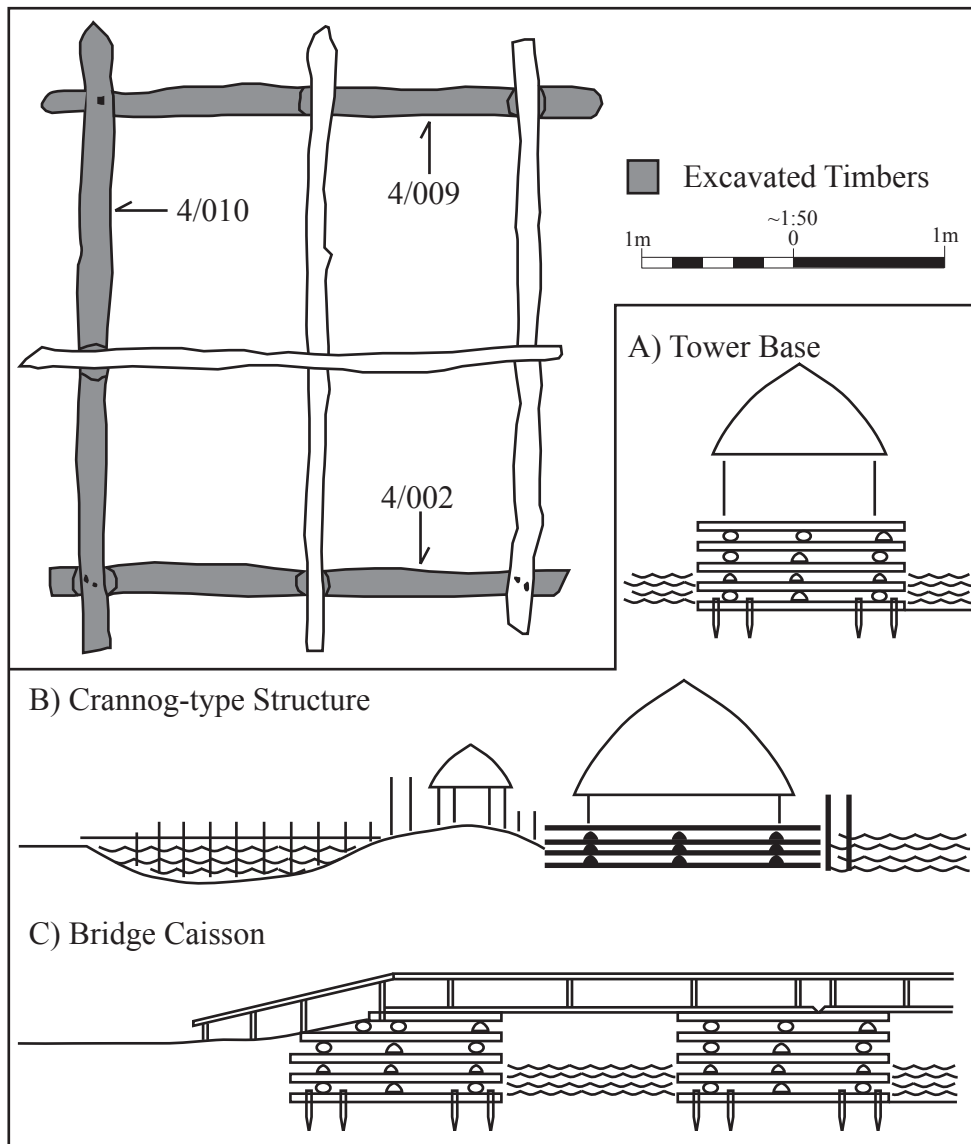


Figure 13: 3 Tentative Reconstructions of the Gridded Laft Work Foundations from which the Half Log Beams may have been Derived

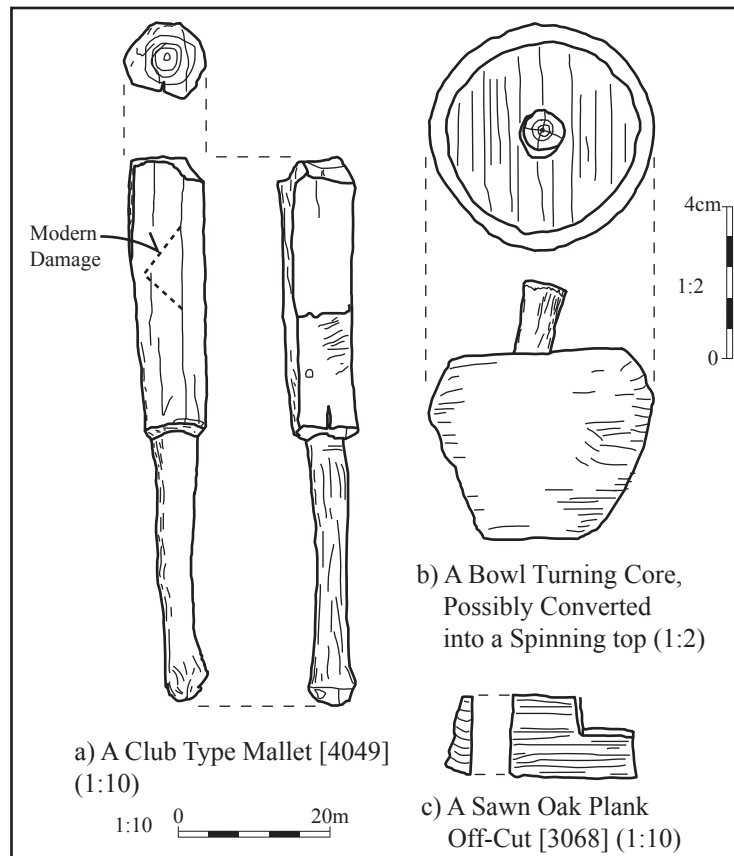


Figure 14: Key Portable Wooden Artefacts

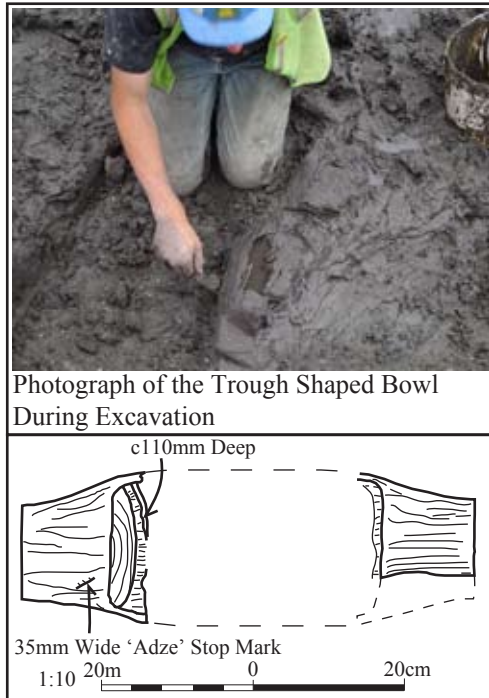


Figure 15: A Trough Shaped Bowl Broken into Two, Found in the Lower Levels of the Main Log Platform [4034] and [4035]

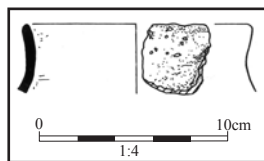


Figure 16: Iron Age
Fingertip Decorated
Sherd