

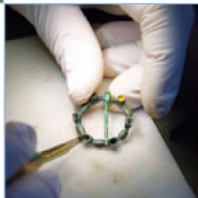
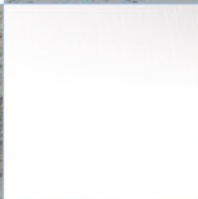
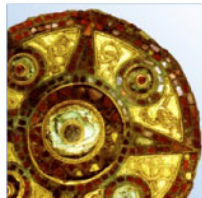
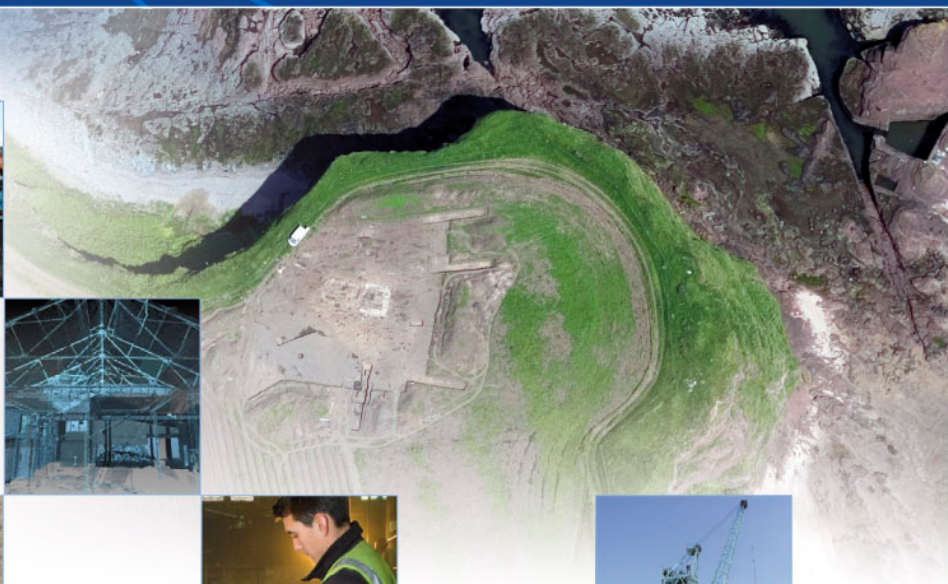
Nursery at Heritage Way, Gosport, Hampshire

An Archaeological Watching Brief Report

National Grid Reference Number: SU 5970 0230

AOC Project no: 30182

Date: July 2008



Nursery at Heritage Way, Gosport, Hampshire

An Archaeological Watching Brief Report

On Behalf of: Latimer & Ayles
448 West Street
Portchester
Fareham
Hampshire
PO16 9UN

National Grid Reference (NGR): SU 5970 0230

AOC Project No: 30182

Prepared by: Chris Pole

Illustration by: Jonathan Moller

Date of WSI: June 2008

This document has been prepared in accordance with AOC standard operating procedures.

Author: Chris Pole

Date: June 2008

Approved by:

Date:

Draft/Final Report Stage:

Date:

Enquiries to: AOC Archaeology Group
Unit 7
St Margarets Business Centre
Moor Mead Road
Twickenham
TW1 1JS

Tel. 020 8843 7380
Fax. 020 8892 0549
e-mail. london@aocarchaeology.com



www.aocarchaeology.com

Contents

Page

List of illustrations	iii
1. Introduction.....	1
2. Planning Background	2
3. Geology & Topography.....	2
4. Archaeological & Historical Background	2
5. Methodology	3
6. Results	4
6.1 Trench 1.....	4
6.2 Trench 2.....	5
6.3 Trench 3.....	6
7. Finds.....	6
8. Conclusions and Reccomendations.....	6
9. Bibliography.....	7
Appendix A Context Register	13
Appendix B OASIS Form	14

List of illustrations

Figure 1	Site Location
Figure 2	Detailed Site Location
Figure 3	Scope of Works

Non Technical Summary

On the 19th June 2008 AOC Archaeology Group carried out a watching brief on ground works conducted at Nursery at Heritage Way, Gosport, Hampshire on behalf of Latimer & Ayles.

A single gas service trench was monitored, and two further service trenches were also recorded. In all trenches natural deposits were present at approximately 0.50m below ground level, overlain by recent made ground and levelling material.

No archaeological finds or features were identified during the watching brief.

1. Introduction

- 1.1 This document is a report on an Archaeological Watching Brief undertaken at the Nursery at Heritage Way, Gosport, Hampshire on 19th June 2008 (Figure 1). The work was undertaken on behalf of Latimer & Ayles.
- 1.2 The site is centred on National Grid Reference (NGR) SU 5970 0230 and is within land bounded by industrial buildings to the north and east, a landscaped area (as part of the business park) to the south and playing fields to the west. The site is irregular in shape and the area affected by the development covers a total area of approximately 0.14 hectares (1400m²) (Figure 2).
- 1.3 The site was originally waste ground but at the time of the watching brief was occupied by a nursery school building, a tarmac car park and areas of waste ground.

2. Planning Background

- 2.1 The local planning authority is Gosport Borough Council (GBC). Archaeological advice to the council is provided by Hannah Fluck of Hampshire County Council.
- 2.2 Hannah Fluck recommended that an Archaeological Watching Brief be carried out on a proposed service trench (Figure 3) and any other groundworks to be commenced on the site.
- 2.4 The application site did not fall within a designated Archaeological Priority Zone area of high archaeological importance and no listed buildings or scheduled ancient monuments lay within the development area. However, the site was less than 100m to the north of the Scheduled Monument of Fort Brockhurst.
- 2.5 A desk-based assessment was not produced prior to works on site. The watching brief was the first stage in the process to fulfil the requirement for a programme of archaeological work. The watching brief was conducted in accordance with a Written Scheme of Investigation, prepared by AOC Archaeology and approved by Hannah Fluck, (AOC 2008).

3. Geology & Topography

- 3.1 The British Geological Survey map (BGS 331) indicated that the site lay on a solid geology of Barton, Bracklesham & Bagshot Beds.

4. Archaeological & Historical Background

- 4.1 Gosport was a major naval and military centre associated with Portsmouth Harbour until the late 20th century. The origin of the name "Gosport" is unknown but may derive from either "goose", "gorse" or "God's Port" (Wikipedia 2008).
- 4.2 Gosport was only a small fishing town during the medieval period, with Alverstoke being the main religious and administrative centre on the peninsula.
- 4.3 Gosport began to develop during the 17th century due to Portsmouth's increasing importance as a naval dockyard. During this time Gosport is recorded as having a mayor and its charter allowed two annual fairs (Gosport Borough Council 2008).

- 4.4 During the Civil War Parliamentary soldiers camped at Gosport and assaulted Portsmouth which was loyal to the King. However, Royalist forces later sacked the town in 1645. In 1677 Gosport was fortified with an earth rampart and dry moat under the orders of King Charles II (Gosport 2008).
- 4.5 The nearby Fort Brockhurst was a Palmerston Fort designed by William Crossman in the 19th century. It was one of a series of forts built as a result of the 1859 Royal Commission which recommended the increased protection of Portsmouth in the face of a possible French Invasion.

5. Methodology

- 5.1 The watching brief was conducted on a gas service trench (Trench 1) to the west of the site by Chris Pole, Project Supervisor, under the overall direction of Melissa Melikian, General Manager (South) of AOC Archaeology Group.
- 6.2 Groundworks not conducted under archaeological supervision but still visible were also recorded (Trenches 2 & 3).
- 6.3 A unique accession number for the project was obtained from the Hampshire County Museum (**A2008.36**) before commencing work on site.
- 6.4 All of the work was carried out in line with Archaeological Guidance Paper (AGP): 3, Standards and Practices in Archaeological Fieldwork (English Heritage June 1998); and IFA Standards and Guidance for Archaeological Watching Briefs (IFA October 1994).

6. Results

6.1 Trench 1



Plate 1: Trench 1 looking north



Plate 2: Trench 1 Sample Stratigraphy

- 6.1.1 A gas service trench was monitored to the west of the site, measuring 35m x 0.55m and aligned north-south with a turn to the east at its southern end (Figure 3).
- 6.1.2 The earliest layer revealed was (1003), a layer of natural mid brown yellow clay sand. This was overlain by (1002), a 0.12m thick layer of made ground, consisting of dark black grey clay silt sand which contained occasional CBM flecks and was heavily rooted. This was sealed by (1001), a recent layer of crushed brick, concrete and stone in a matrix of loose grey coarse sand 0.30m thick, used as a working surface.
- 6.1.3 No archaeological finds or features were present in Trench 1.

6.2 Trench 2



Plate 3: Trench 2 looking south



Plate 4: Trench 2 Sample Stratigraphy

- 6.2.1 A wall foundation trench was excavated to the south of the site, measuring 8m x 1.00m and was aligned north-south with a turn to the east at its southern end (Figure 3).
- 6.2.2 The earliest layer revealed was (1003), a layer of natural mid brown yellow clay sand 0.50m thick to the vertical limit of excavation. This was overlain by (1002), a 0.14m thick layer of made ground, consisting of dark black grey clay silt sand with occasional CBM flecks which was heavily rooted. This was overlain by (1004), a 0.17m thick layer of made ground consisting of grey compact sandy gravel. This in turn was overlain by (1005), a 0.15m thick layer of crushed yellow limestone. This was sealed by (1001), a recent layer 0.15m thick of crushed brick, concrete and stone in a matrix of loose grey coarse sand, and used as a working surface.
- 6.2.3 No archaeological finds or features were present.

6.3 Trench 3



Plate 5: Trench 3 looking north



Plate 6: Trench 3 Sample Stratigraphy

- 6.3.1 A service trench was excavated to the extreme northeast of the site, measuring 15m x 0.55m and aligned north-south with a turn to the west at its northern end (Figure 3).
- 6.3.2 The trench revealed a layer of natural mid brown yellow clay sand (1003) which was excavated to a depth of 0.10m. This was overlain by (1002), a 0.55m thick layer of made ground, consisting of dark black grey clay silt sand which was heavily rooted. This was overlain by (1001), a layer 0.10m thick of crushed brick, concrete and stone in a matrix of loose grey coarse sand.
- 6.3.3 Trench 3 contained no archaeological finds or features.

7. Finds

- 7.1 No archaeological finds were present.

8. Conclusions and Recommendations

- 8.1 The watching brief was conducted on a single gas service trench (Trench 1) which contained no archaeological finds or features.
- 8.2 Two open trenches (Trenches 2 & 3) excavated prior to the watching brief were also examined and recorded, but it is unlikely that these contained any archaeological finds or features.
- 8.3 Foundation trenches for the nursery school building could not be examined as the building was already erected by the time of the watching brief.

- 8.4 Stratigraphy across the site was uniform, with made ground directly overlying natural deposits. The ground is likely to have been reduced during the construction of the Heritage Business Park's infrastructure.
- 8.5 It is the recommendation of AOC Archaeology that no further work is required on site. However, the final decision will rest with Hannah Fluck of Hampshire County Council.
- 8.6 Due to the limited nature of the results, publication will be by way of a round-up in the relevant local journal and online at the ADS OASIS project (Appendix B).

9. Bibliography

AOC Archaeology Group (2008) *Nursery at Heritage Way, Gosport, Hampshire: A Written Scheme of Investigation for an Archaeological Watching Brief*

British Geological Survey Map (Sheet 331)

Council for British Archaeology (1987). *First Aid For Finds* (Second Edition).

Department of the Environment (1990). *Planning Policy Guidance: Archaeology and Planning (PPG16)*.

English Heritage (1991). *Management of Archaeological Projects*.

English Heritage London Region (1992). *Archaeological Assessment and Evaluation Reports (Guidelines) Archaeological Guidance Paper: 5*.

English Heritage (1998a). *Archaeological Guidance Paper 3: Standards and Practices in Archaeological Fieldwork*. (English Heritage London Region).

English Heritage (1998b). *Archaeological Guidance Paper 4: Standards and Practices in Archaeological Reports*. (English Heritage London Region).

English Heritage (2002). *Environmental Archaeology: A guide to the theory and practice of methods, from sampling and recovery to post-excavation*.

Institute of Field Archaeology (1992). *Standards and Guidance and Guidelines for Finds Work*.

Institute of Field Archaeologists (1994, revised 2001). *Standard and Guidance for an Archaeological Watching Brief*.

Institute of Field Archaeologists (1997). *Code of Conduct*.

Museum of London (1994). *Archaeological Site Manual* (3rd ed).

United Kingdom Institute for Conservation (1983). *Conservation Guidelines No 2*.

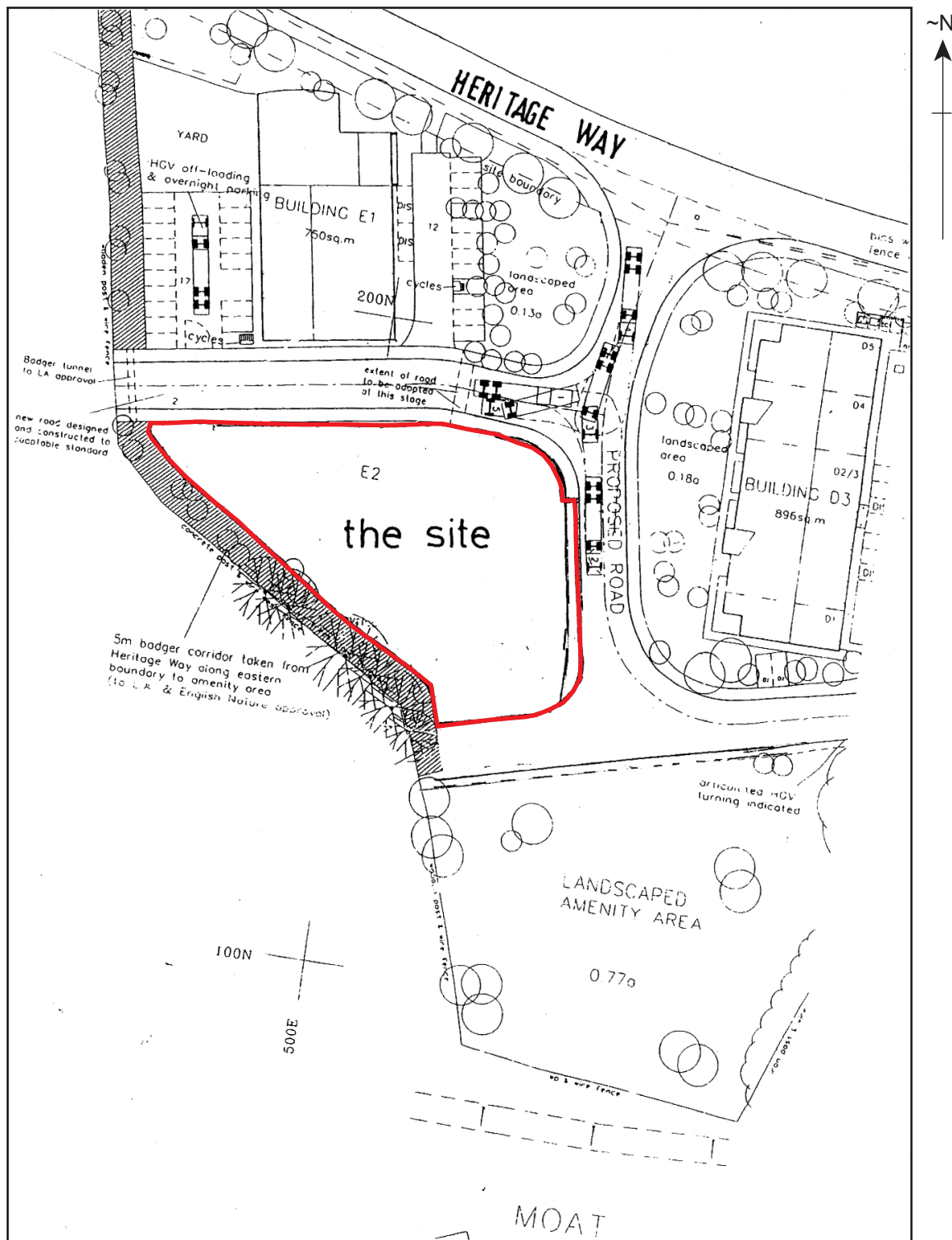
United Kingdom Institute for Conservation (1990). *Guidance for Archaeological Conservation Practice*.

Wikipedia (2008) www.Wikipedia.org [online]

Gosport Borough Council 2008 www.gosport.gov.uk/sections/living [online]



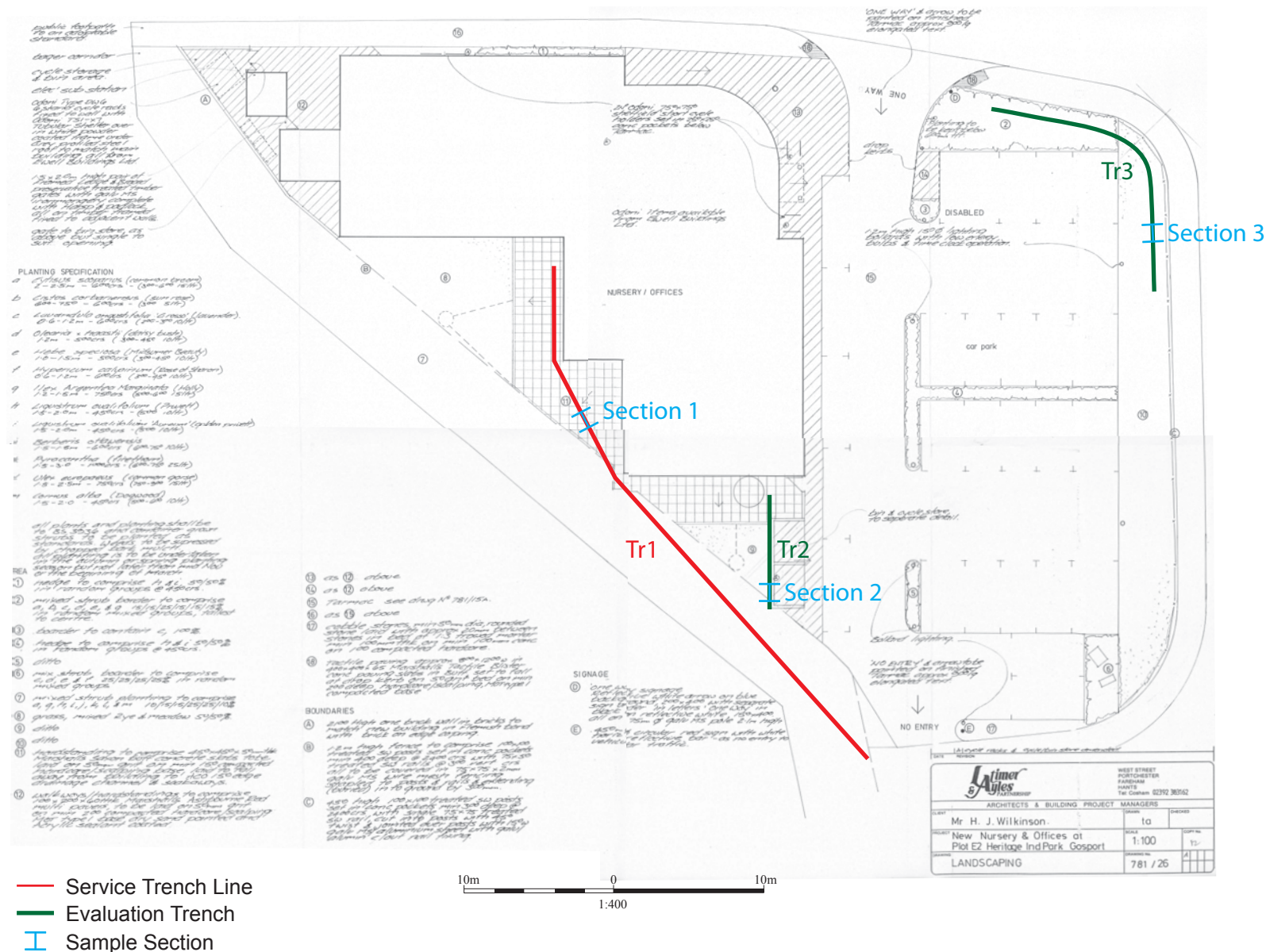
Figure 1: Site Location



Based on the Plan Provided by Latimer & Ayles Partnership

Not To Scale

Figure 2: Detailed Site Location



- Service Trench Line
- Evaluation Trench
- Sample Section

Figure 3: Scope of Works

Appendices

Appendix A Context Register

Context No.	Context Description	Length	Width	Depth
1001	Recent Made Ground			
1002	Made Ground			
1003	Natural	Site	Site	NFE
1004	Made Ground			
1005	Made Ground / Pathway?			

Appendix B**OASIS Form****OASIS ID: aocarcha1-45077****Project details**

Project name	Nursery at Heritage way, Gosport, Hampshire
Short description of the project	A single gas service trench was monitored, although two service trenches excavated without archaeological supervision were also recorded. No archaeological finds or features were present during the watching brief.
Project dates	Start: 19-06-2008 End: 19-06-2008
Previous/future work	No / Not known
Type of project	Recording project
Site status	None
Current Land use	Other 13 - Waste ground
Investigation type	'Watching Brief'
Prompt	Direction from Local Planning Authority - PPG16

Project location

Country	England
Site location	HAMPSHIRE GOSPORT GOSPORT Nursery at Heritage Way, Gosport, Hampshire
Postcode	PO12 4BG
Study area	0.14 Hectares
Site coordinates	SU 5970 0230 50.8166027554 -1.152453199820 50 48 59 N 001 09 08 W Point

Project creators

Name of Organisation	AOC Archaeology Group
Project brief originator	Brief not produced
Project design originator	AOC Archaeology Group

Project director/manager Meklissa Melikian

Project supervisor Chris Pole

Type of sponsor/funding body Developer

Name of sponsor/funding body Latimer & Ayles

Project archives

Physical Archive Exists? No

Digital Archive recipient Hampshire County Museum

Digital Media available 'Images vector','Text','Database','Images raster / digital photography'

Paper Archive recipient Hampshire County Museum

Paper Media available 'Map','Matrices','Microfilm','Photograph','Plan','Report','Section'

Project bibliography 1

Publication type Grey literature (unpublished document/manuscript)

Title Nursery at Heritage Way, Gosport, Hampshire

Author(s)/Editor(s) Pole, C

Date 2008

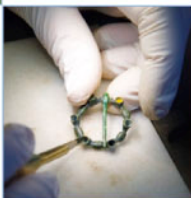
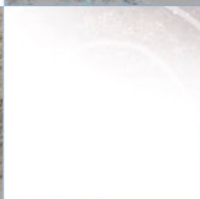
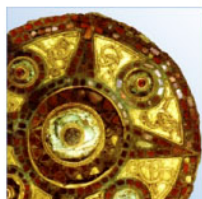
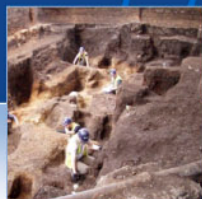
Issuer or publisher AOC Archaeology Group

Place of issue or publication London

Description A4, 3 Figures, 6 Plates, 15 pages

Entered by Chris Pole (chris.pole@aocarchaeology.com)

Entered on 5 July 2008



AOC Archaeology Group, Unit 7, St Margarets Business Centre, Moor Mead Road, Twickenham TW1 1JS
tel: 020 8843 7380 | fax: 020 8892 0549 | e-mail: london@aocarchaeology.com

www.aocarchaeology.com