

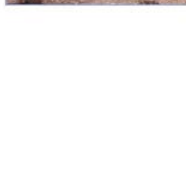
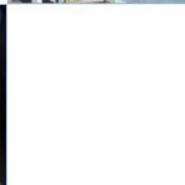
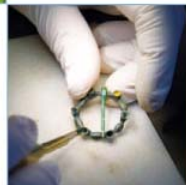
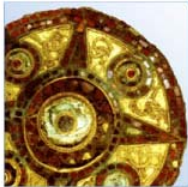
Northbrook School, Taunton Road, Lee Green, London Borough of Lewisham Historic Building Recording

Planning Application Number: DC/07/67730/X

National Grid Reference: TQ 3950 7480

AOC Project no: 30260

October 2008



ARCHAEOLOGY

HERITAGE

CONSERVATION

**Northbrook School, Taunton Road, Lee Green,
London Borough of Lewisham
Historic Building Recording**

On Behalf of: ATKINS Heritage
Water & Environment
Atkins Limited
Woodcote Grove
Ashley Road
Epsom,
Surrey
KT18 5BW,

National Grid Reference (NGR): TQ 3950 7480

AOC Project No: 30260

Prepared by: Les Capon

Contributions from: Tom Wilson

Illustration by: Jon Moller

Date of Document: October 2008

This document has been prepared in accordance with AOC standard operating procedures.

Author: Les Capon

Date: September 2008

Approved by: Edmund Simons

Date: October 2008

Final Report Stage: Les Capon

Date: October 2008

Enquiries to: AOC Archaeology Group
Unit 7
St Margarets Business Centre
Moor Mead Road
Twickenham
TW1 1JS

Tel. 020 8843 7380
Fax. 020 8892 0549
e-mail. london@aocarchaeology.com



www.aocarchaeology.com

Contents

	Page
List of illustrations.....	iii
List of plates.....	iii
Summary.....	1
1 Introduction	1
1.2 Site Location.....	1
1.3 Development Proposal.....	1
1.4 Planning Background.....	1
1.5 Methodology.....	2
1.6 Topography.....	2
2 Historical Background	2
3 Building Record	2
3.1 External Description, Block A and B.....	2
3.2 Original Components.....	4
Block A Basement.....	4
3.3 Block A Ground Floor.....	4
3.4 Block A First Floor.....	6
3.5 Block A Second Floor.....	7
3.6 Block A Third Floor.....	7
3.7 Modifications.....	8
3.8 Main Hall.....	9
3.9 Southern extension.....	9
3.10 Block B.....	10
3.11 Construction Detail.....	11
3.12 Block C.....	12
4 Conclusions and Interpretation	13
5 Bibliography	16
Plates.....	25
Appendix A, Photographic Register.....	36
Appendix B, OASIS Form.....	41

List of illustrations

- Figure 1: Site Location.
- Figure 2: Detailed Site Location
- Figure 3: Photographic locations: Exterior
- Figure 4: Photographic locations: Basement
- Figure 5: Photographic locations: Ground Floor
- Figure 6: Photographic locations: First Floor
- Figure 7: Photographic locations: Second Floor
- Figure 8: Photographic locations: Third Floor

List of plates

- Plate 1: School exterior, looking northwest
- Plate 2: School exterior looking south
- Plate 3: Boiler Room, basement
- Plate 4: Gymnasium, looking west
- Plate 5: Ground Floor Christian mural, looking northwest
- Plate 6: Ground Floor Main corridor, looking south
- Plate 7: Ground Floor Northern stairwell, looking northwest
- Plate 8: Ground Floor Staffroom, looking northwest
- Plate 9: Ground Floor History Classroom looking north
- Plate 10: First Floor Technology Classroom, looking southeast
- Plate 11: First Floor Corridor looking south
- Plate 12: Second Floor Art Classroom looking north
- Plate 13: Second Floor classroom looking north
- Plate 14: Second Floor Extension Stairwell, looking southwest
- Plate 15: Second Floor English Classroom looking south
- Plate 16: Second Floor English Classroom looking south
- Plate 17: Roof Garden looking north
- Plate 18: Third Floor Science Classrooms looking south
- Plate 19: Third Floor Block B corridor
- Plate 20: Third Floor Main south stairwell

Summary

A programme of Historic Building Recording was carried out on Northbrook School on Taunton Road, Lee, in the London Borough of Lewisham. The school was constructed in the mid-1950s. The record is primarily a photographic record, although evidence of the construction methods of the school, its materials and function has been recorded. All features described appeared to be components of the building constructed in 1957, or later additions. No elements of the Victorian School known to be on the site were incorporated into this building.

This report provides a record of an example of a school designed in the 1950s, typical of post-war London architecture, of simple style, and light and pleasant. As well as locating the positions of the photographs taken, a short description of each room and a discussion on the school building is presented, which shows it to have been practical in its layout.

1 Introduction

This document presents the results of a Historic Building Record of Northbrook Church of England Secondary School; this was built in the 1950s in Lee, in the London Borough of Lewisham. The recording was largely photographic, but materials were examined, and the flow of pupils within the school can be understood according to room layout. The function and use of each room was provided in a survey made available by Atkins Heritage.

1.2 Site Location

- 1.2.1 The site is centred on National Grid Reference (NGR) TQ 3950 7480 (Figure 1), and is within land bounded by late 19th century housing; Taunton Road is directly south of the school, Hedgley Street lies to the east, to the north is Brightfield road, and to the west Manor House Gardens (Figure 2). The school has no statutory listing.

1.3 Development Proposal

- 1.3.1 A planning application has been made for the demolition of the existing buildings and construction of a single to four-storey new secondary school with associated facilities and landscaping (Planning Application No. DC/07/67730/X). The building record has been made prior to demolition works but after closure.

1.4 Planning Background

- 1.4.1 The local planning authority is the London Borough of Lewisham. Archaeological advice and guidance is provided by the Greater London Archaeology Advisory Service (GLAAS). A Desk Based Assessment has been produced by Atkins Heritage (Atkins 2007), which has examined the archaeological potential of the site and assessed the value of the school buildings.
- 1.4.2 The next stage in the planning process was creation of a Written Scheme of Investigation, detailing the methodology for recording, and including some background history of the site (AOC 2008).

1.5 Methodology

- 1.5.1 The Survey work and resultant report is designed to fulfil the requirements set out within the design brief set out by Atkins Heritage (Atkins 2008). It also corresponds to Level 2 of the guidelines published by English Heritage (EH 2006). The scope of recording is based upon these guidelines.
- 1.5.2 Level 2 is a **descriptive record**. It is suitable for this building which is judged not to require any fuller record. Both the exterior and the interior have been viewed, described and photographed. The record presents conclusions regarding the building's development and use, but does not discuss in detail the evidence on which these conclusions are based.
- 1.5.3 The site records and archive are identified by the Site Code NKS08.

1.6 Topography

- 1.6.1 The site is broadly flat, on the south side of the Quaggy River. The river flows from Locksbottom near Orpington, through Bromley and Greenwich to Lewisham town centre, where it joins the Ravensborne which flows into the Thames at Deptford. Suburban development in the immediate area has removed subtleties of topography.

2 Historical Background

- 2.1 The Baring family, lords of the Manor of Lee, adopted the title of 'Northbrook'. In 1871, the then Earl of Northbrook donated land to St. Margaret's Parish Church to enable the construction of an Infants School necessitated by the fast-growing population of Lee. The original school was expanded and entitled the 'Hedgley Street Junior and Infants School', and renamed 'Northbrook School' soon after the beginning of the 20th century. The Service of Commemoration states that the school was opened with the belief that 'religion is the basis of character, and that no education can be complete which has not a spiritual foundation' (*Northbrook CoE School 2008*).
- 2.2 Following the outbreak of war in 1939, the school was evacuated and was mostly destroyed during a bombing raid in 1940. Construction for the present Northbrook Church of England School began in 1953, and the school was opened by Princess Margaret in 1957 as a Church of England mixed comprehensive school. The architecture of this building is functional; the front (south) element of the school is four storeys high with a double main hall to the rear, a single storey outbuilding to the north end of the playground and a single storey western extension to the main building.
- 2.3 The available sequence of Historic Maps shows the post-war development of the school. The 1969 Ordnance Survey Map shows a large building marked 'Northbrook C of E Secondary School', and this is the main building, Block A and the Hall behind. On the 1990 Map, the existing school has two new extensions, to the west (Block B) and south of the main building (Extension to Block A).

3 Building Record

3.1 External Description, Block A and B

(Figure 3)

- 3.1.1 Northbrook School is formed of a principal main Teaching Block (Block A). There are two extensions: one to the west (Block B), and one to the south. On the north side of the school is the Main Hall and the playground, with a gate from Brightfield Road. The main entrance to the school is from Taunton Road, and the main door is in the south side of the school, although there are also entrances into the

- southern extension, the west side of Block A, the west side of Block B, to the staffroom, to the gymnasium and hall on the north side of the Main Hall, and to the kitchen.
- 3.1.2 The south and east elevations of the school are the most visible to the public. The southern extension now dominates the south elevation, but the main door is located on the principal south elevation prior to extension. The main doorway comprises a pair of doors with an external porch formed by a projecting concrete slab. The main door is in the south of a four-storey block of classrooms: administration facilities on the ground floor and classrooms on the upper floors are lit by windows that span the entire length of each floor. Each floor is part-brick and part glazed. The bricks are yellow, each measuring 221mm by 62mm by 105mm, and are laid in stretcher bond. Principal vertical steel beams that comprise part of the superstructure form the frame of the school form divisions that break up the flatness of the exterior. The windows are all top-hung casements with limited opening. The windows are plastic and aluminium double-glazed units. The roof above is flat.
- 3.1.3 Directly west of the door is an entirely glazed section, lighting the southern Main Stairwell. Next to this, the exterior of Block A runs southwards, again four stories high, and has high-level windows on each floor.
- 3.1.4 The southern extension is an addition to the main block, and is also four stories high. It is built of similar brick, again in stretcher bond, and is adequately lit by windows in each side. The top of the block is constructed differently from the rest of Block A; there are a series of boards cladding the eaves beneath the flat roof, compared to the main block, which is unclad. The western side of the southern extension has a glazed stairwell covering all four floors and a door at the base.
- 3.1.5 The western side of Block A is quite different from the regularity of the eastern side. The ground floor is recessed; the upper floors are supported on large circular columns. The ground floor windows are all high level in this section. There are three doors; one to the Admin office, one to the main Lobby and one to a store which leads on the girls' changing room. Block B has been attached to this western face of the school. A pair of doors lead into one corridor that gives access to the main pupils' WCs as well as to up a stairwell to the upper floors of Block B. Directly west of the doors is a two-storey section of Block B which are classrooms, both with windows only in the south elevation. There is a flat roof above. The stairwell is also accessed by a pair of doors in the western wall of the block. It has high-level windows on each floor. The staff room north of this continues the western elevation, large windows and another exterior door are present. The ground floor north side of Blocks A and B are obscured by the Main Hall, but the first to third floors are built in the same way as the rear of Block A: regularly spaced large windows light the principal classrooms. The northern stairwell is entirely glazed, to maximise light.
- 3.1.6 The northeastern part of Block A has, on its upper two floors, windows running the entire length of the elevation lighting the classrooms. There is no fourth floor at this point. The ground floor has windows relevant to the room uses behind: where there are offices, there is ample light. Where lavatories, high-level frosted windows. Beneath the kitchen lavatory and store is a small opening that is probably a vent for the basement.
- 3.1.7 One part of the school that is higher than the rest is a chimney that rises from the northwest corner of the boiler room, through the kitchen, and up against the south wall of the Main Hall. The chimney is formed of rings of concrete and rises higher than the fourth floor. This does not appear to have been used for some time, and probably fell from use when the heating system was converted from coal to gas.

- 3.1.8 Parts of Block A and B are single storey. This includes The Boiler Room (B005), the Shower Room and Boys' Changing Room (B006 and B007) the two PE Offices (A024 and A025), the Careers Office (A022), part of the main Corridor (A021), part of the Kitchen (A030), plus the associated store and WC. Most of these rooms are lit by skylights.

3.2 Original Components

Block A Basement

(Figure 4)

- 3.2.1 The basement lies beneath the eastern part of the single story section of Block A, and is accessed down a narrow set of concrete stairs along the south side; the doorway is in the south side of the basement. The stairway is enclosed by a concrete-rendered wall to the south and west. The basement is separated into two areas, the **Boiler Room** (A01) being the principal room, providing the majority of the services for the school buildings. At the time of recording, the floor was beneath several inches of water.
- 3.2.2 The plant in the boiler room is concentrated along the western part of the room, and consists of a 'Sanigaz' gas-fired water heater, manufactured by Guillot-Yngis Heating Ltd, a Buderus condensing boiler and a Clyde CG condensing boiler. Independent pressure dials are located on the south walls, and electric fuses on the east wall. A Fire-extinguisher is also located in this room.
- 3.2.3 The **Coal Store** is located in the southeastern part of the basement, and can be accessed through a pair of iron doors. There was no coal remaining, and it is assumed that the use of coal to heat the boilers was abandoned after the Clean Air Acts of 1968 or 1993. The chimney which is part of the heating system is built of rings of reinforced concrete and stands higher than the roof of Block A.

3.3 Block A Ground Floor

(Figure 5)

- 3.3.1 The school's main entrance is on the south side of Block A, and is a pair of glazed doors which open into a short **Lobby** (A001). The lobby then gives direct access northwards through a second pair of doors into the **Main Entrance** (A002). This gives access to the principal north-south **Corridor** (A021) of the ground floor through a third pair of doors. The main entrance also gives access to the Admin office, and the Headteacher's Office.
- 3.3.2 The large **Admin Office** (A006) has a large window with a roller shutter facing onto the main entrance room, which may be a reception point for visitors. A second admin office to the rear (A006) was partitioned by breeze blocks. A small patch of and yellow, orange, red and tan vertical striped wallpaper survives on the northern wall over a patch of foliate wallpaper. The walls are painted pale yellow, the skirting black.
- 3.3.3 The **Headteacher's Room** (A004) is painted magnolia with black skirting. No proof of its use as the Headteacher's room was present: the interpretation derives from the survey provided by Atkins Heritage. Directly between this room and the main corridor is a small antechamber, presumably a waiting area outside the office. A small **Store** (A003) is formed by a partition.
- 3.3.4 Beyond the third pair of doors, the Main corridor is a wide space, with a row of columns supporting the ceiling and floor above, and contains the main northern stair of Block A, as well as providing access to the Hall and Gymnasium, the Kitchen, other offices, and lavatories. There is a second entrance to the Corridor from the West, where a second **Lobby** (A007) is accessed through a pair of

- glazed doors. The lobby also provides access to the main southern stair of Block A and to two Careers Offices to the south.
- 3.3.5 The two principal stairs are built identically, being half-turn stairs with landings, three flights between each floor. However, that to the north rises anti-clockwise and that to the south rises clockwise. The stairwells are lit by full-length windows from floor to ceiling on all floors, except for the ground floor northern flight, which is within the principal corridor. The balusters are thin with a square profile and the banister flat. On the upper floors, the **Stairwells** are separated from the main Corridors by pairs of glazed doors.
- 3.3.6 A series of rooms lie to the east of the main Corridor. Immediately east of the doors into the **Corridor** (A021) is a smallish room for a **Deputy Head** (A040) with a small **Store** (A039) accessed through a door in the northern wall. The room is painted pale blue and the skirting black. Next to this is a small '**Electricity Room**' (A038). Next to this are two Lavatories, a **Men's WC** (A037), with two cubicles and washbasins, and a **Women's WC**, (A036) also with two cubicles and washbasins. The male facilities are painted pale green, the female magnolia. The next room north of here is another defined on the supplied plan as a room for a **Deputy Head** (A035). However, this is larger than the other deputy Head's Room, and has tiling on the south wall, a sign indicating drinking water and a partition on the west wall. This is most likely a washroom.
- 3.3.7 At the northern end of this range of rooms is the **Kitchen** (A030), which has a series of stainless steel sinks underneath the southern windows. The walls are tiled with white tiles, the floor tiled with red tiles. A large square pillar in the centre of the room supports the corner of the upper floors of Block A above. Few features are extant in this kitchen besides the sink. A short section of ceramic drain is set into the floor. A fuse box is mounted on the eastern wall. The west wall houses shutters, and next to them is the notice 'Shutters to be kept closed when not in use'. Two partitions have been dismantled: an **Office** (A029) in the northwest corner of the kitchen and a **Store** (A031) in the northeast. Both were formed of breeze blocks.
- 3.3.8 In the eastern wall of the Kitchen is a door which leads to a short **Corridor** (A032). The corridor leads north to an exterior door, west to a **WC and washroom** (A033) and south to a **Store** (A034). The washroom has two important hygiene notices; 'Now wash your hands please' and 'In the interests of food hygiene wash only hands here'. A lavatory bowl, mirror and soap dispenser are the remaining fittings here. The store to the south contains, on its western wall, the rear of the fuse box apparent in the kitchen.
- 3.3.9 The principal corridor of the Ground floor is decorated with a religious motif in relief. This is on the south wall of the Main Hall and depicts a family of two parents and two children approaching Jesus as a shepherd. The carving is black against the white wall of the corridor. This part of the corridor is single storey and is lit by circular skylights, and connects to the boys changing rooms in Block B. opposite the carving is a door which leads to the **Girls Changing Room** (A023).
- 3.3.10 There is no natural light into the girls changing room because there are no windows. There was once a skylight, but this had been converted to carry ducting. The only fitting is a metal clothes rail. The walls are painted blue. The western half of the room is divided by a wall c.2.00m high, and houses a shower space, which appears to be open plan with a drainage channel around the edge. This room is also accessible from the south, through Room A016.
- 3.3.11 The northwest corner of Block A holds two rooms, both **P.E. Offices** (A024 and A025). These are presumably for the use of male and female P.E. staff: one opens onto the Girls Changing Room, the other onto the Boys Changing Room.

- 3.3.12 The room defined on the plan provided by Atkins Heritage as a **Store** (A016) which provides access to the Girls Changing Room is accessed from an external door to the west and a second internal door from a short **Corridor** (A017). The Store contained four large rectangular sinks, so may originally have had a different function. The short corridor connects with the principal corridor, and has doors to two other rooms (A105 and A007).
- 3.3.13 The other room, defined as a store, may have been used as one, but also contains a fuse box for lighting.
- 3.3.14 Three rooms lie south of the western lobby. Two rooms side by side are accessed from the lobby, both **Careers Offices** (A008 and A013). The walls of these rooms were formed of lightweight partitions, removed prior to recording. The removal of the partitions also exposed the third room, an **Admin Office** (A012). This room can be entered from a single door in the west wall. The whole block has high level windows and is painted pale yellow inside.
- 3.3.15 There were four rooms west of the northern stair in the principal corridor. The southernmost of these was an **Interview Room** (A019). Its walls had been removed prior to recording, as had the walls to an associated **Office** (A018) to its west. A third missing room was under the northern staircase, defined on the plan as for the **Premise Officer** (A020), the equivalent of a site manager. The northernmost of these rooms is intact, and is a **Careers Office** (A022). The room has no external windows, and is lit by six circular skylights as well as windows from the corridor and electric lights. One fitting was present in the room; a cork board, and there was a small poster of vowels.

3.4 Block A First Floor

(Figure 6)

- 3.4.1 The principal circulation area of the first floor is the central **Corridor** (A102), which can be accessed by either the northern or the southern stairs. Between the corridor and both sets of stairs were pairs of glazed doors. These would protect against sudden falls and prevent inappropriate running. These were removed prior to recording. The corridor is wide, and features circular columns that support the floor above. At the northern end of the corridor, a branch runs west, towards Block B. At the southern end of the corridor, another **Corridor** (A103) runs south towards the southern extension.
- 3.4.2 A large classroom lies to the southeast of the corridor. This is a **Technology Classroom** (119), and is well-lit by windows on both long sides. Three low walls divided the room into partial cubicles, each with a sink, and probably contained workbenches. A door in the north wall leads to an **Office** (A118), which retains its flooring: pale linoleum. The walls are pale green. A second door in the north wall of the office opens into the classroom in the northeast corner of Block A. This northeast classroom is primarily accessed from the principal corridor, and is also a **Technology Classroom** (A116), of equal size to that to the south. No fittings survive. In the south wall of the classroom are two doors: one leads to the Office, the other to a small **Store** (A117).
- 3.4.3 Two rooms lie to the west of the corridors of Block A, the nearest to the main corridor is a **Languages Classroom** (A111), the blackboard or whiteboard was mounted on the south wall. South of here is an **English Classroom** (A108), the blackboard also mounted on the south wall. This is a practical location for the boards: this avoids sunlight shining upon them. One notice was present in the room, an instruction: 'Please do not write on this board'. In the northern end of the room were two small **Stores** formed by partitions removed prior to recording (109 and 110).
- 3.4.4 The western branch of the main corridor that leads to Block B has two small rooms on its northern side: a **Cleaners Store** (A112) which contains a small low-level sink, and a Staff WC (A113) with a lavatory and basin. Both small rooms are breeze-block partitions of the corridor. North of the corridor

is the other classroom on this floor, another **Languages Classroom** (A114).. The board may have been on the west wall, there being a change in the paintwork there.

3.5 Block A Second Floor

(Figure 7)

- 3.5.1 The second floor is accessed by the **Stairwells** (A201 and A212), which both accessed the **Corridor** (A202) via pairs of glazed doors. The layout is largely identical to the First Floor, the corridor having a short branch southwards and westwards to Block A. To the southwest of the corridor is a large room which was used as a **Library** (217). There is evidence of a low partition on the west wall, and this is the scar left following the removal of a counter that bound the **Library Reception** area (A218). A door in the northern wall leads to a small **Office** (A216) that was formed of breeze blocks.
- 3.5.2 In the northeast of the Second floor is a second large room, this an **Art Classroom** (A214), which had an **Art Store** (A213) beyond a small partition at the north end. Little evidence remains of the room's use, but a large rectangular sink attached to the east wall resting on a brick.
- 3.5.3 South of the Art Classroom is a small room accessed from the main corridor. This is a **Dark Room** (A215), largely painted black, and containing a sink against the eastern wall. The entry from the corridor is through sets of doors with a small vestibule between. This is clearly to prevent light spillage into the dark room.
- 3.5.4 At the south end of the main corridor's southern branch is a **Computer Room** (A206). The board had been mounted on the southern wall. A door in the southern wall leads south into the southern extension of Block A. In the northern end of the room, a demolished partition once enclosed an **Office** (A207), upon the wall was remnants of IT equipment, possibly once a server. Directly north of this room and also accessed from the main corridor is another classroom. The subject taught was not clear from any evidence in the room. The board was situated on the south wall.
- 3.5.5 The short length of corridor that leads to Block B has on its north side two small rooms. One is a Cleaner's Store (A209), with a small low level sink. West of this is a small room, a Staff Shower (A210), which barely has room for an opening door as well. The northwest classroom of the second floor lies north of these two rooms, and is a Maths Classroom (A211). No surviving fittings or educational posters were present.

3.6 Block A Third Floor

(Figure 8)

- 3.6.1 The third floor is accessed by the **Stairwells** (A301 and A314), which both accessed the **Corridor** (A302) via pairs of glazed doors. The layout is largely identical to the lower floors; the corridor having a short branch southwards, and also westwards to Block A. The corridor has a series of alphabetical science posters, and names of eminent scientists have been painted on supporting pillars. To the southwest of the corridor is a large room which was used as a **Science Classroom** (A317). Gas pipes rise from the floor, indicating the former location of work benches. There was no evidence to prove or disprove whether the benches were an original feature of the room, but it seems very probable. The gas pipes would have lead to gas taps for Bunsen burners for use in science lessons. Two doors in the north wall of the room lead to two different areas; the western of the two doors leads to a **Chemical Store** (A315) with an ante-room from the main corridor and a smaller stall to its south west (A316).

- 3.6.2 The second northern door in the room opens onto a flat roof with a low parapet wall surmounted by a waist-high railing that was used as a **Roof Garden**. This area is also accessed from the northern stairwell (A314). Two plant pots with long dead plants were on the roof space. This is the roof of the Art Classroom (A214 below).
- 3.6.3 In the west of Block A were once three rooms formed by partitions: these partitions had been removed prior to recording, leaving one large open space almost 18m long. This area once held two **Science Classrooms** (A307 and A309) with an **Office** between (A308). The only surviving features in the room are radiators on the western wall.
- 3.6.4 The northern part of the main corridor has two small rooms opening onto it, small partitioned areas, a **Cleaner's Store** (A310) and a **Staff WC** (A311). The cleaners store has a small basin in it, common to all cleaners' stores in the school, and the Staff WC has a lavatory and basin. Two rooms lie north of the corridor, forming the northern end of Block A. These are a Science Laboratory (A312) to the northwest and a Prep Room (A313) to the northeast. The Science laboratory is divided from the third floor of Block B by a pair of rolling metal shutters. The wall between the Prep room and the laboratory was a lightweight partition wall, recently demolished.
- 3.6.5 The roof of Block A is formed of steel beams and timber. Wall plates that are steel I-beams surmount the walls, and further steel beams are bolted horizontally to these to form the basic roof structures. Timber beams 0.25m wide are bracketed to the horizontal steels; these form roof joists, atop which boards are laid. The whole is covered in roofing felt.

3.7 Modifications

- 3.7.1 The short corridor (A017) connects with the principal corridor, and has doors to two other rooms another **Deputy Head's Room** (A015) and another small **Store** (A014). The Deputy Head's room is formed by a curving breeze block partition against the western lobby (A007), and has no natural light. Upon one wall is a motivational poem, 'The Man Who Thinks He Can', by Walter D Wintle (c. 1905). It is unclear whether this is to relieve despair of a child or a staff member.

If you think you are beaten, you are;
If you think you dare not, you don't;
If you'd like to win, but think you won't
It's almost certain that you won't.

If you think you'll lose, you've lost;
For out of the world we find
Success begins with the person's will
It's all in the state of the mind.

If you think you're outclassed, you are
You've got to think high to rise;
You've got to be sure of yourself before
You can ever win a prize.

Life's battles don't always go
To the strongest or fastest person,
But sooner or later the person who wins
Is the one who thinks they can.

It is notable that in the second and third from last lines the word 'person' has replaced the original 'man', making the poem applicable to all genders but destroying the last rhyme of the poem.

3.8 Main Hall

(Figure 5)

- 3.8.1 The structure of the main hall is two storeys high: 6.55m to the apex of the roof, and is formed of bricks, steel girders and glass. The west wall is solid brick. The south wall has upper level windows where it is used as a gymnasium, and a door in the north western corner. The eastern part of the building is used as a main hall, and is fully glazed floor to ceiling. A large window in the east wall of the hall also provides a large amount of light. Windows in the south wall of the hall are all high level, to be above the level of the single storey part of Blocks A and B.
- 3.8.2 The **Gymnasium** (A026) occupies the western end of the Main Hall. It is open to the roof, with the steel frame showing. The roof of this section has four low profile roof trusses, each of eight sections with cross braces. Each truss is strengthened by tie-beams. The room is lit by high level top-hung casement windows, which are operated by a winding mechanism at shoulder-height. The floor is probably sprung, and finished with highly polished wooden boards, forming the gymnasium space, marked out with a basketball court. It is also furnished with climbing frames and ropes. The gymnasium is accessible from the school playground and from a corridor to the south. The eastern wall of the room is formed of a lightweight steel foldable shutter.
- 3.8.3 The **P.E. store** (A027) is located off the north side of the gymnasium, and is a small room, now empty, that presumably stored equipment for games such as balls and rackets. Because of closure, the school has been stripped of most of its equipment: two vaulting horses remain.
- 3.8.4 The **Hall** (A028) is located at the eastern end of the Main Hall. The roof trusses are obscured by a suspended ceiling. The floor is a parquet floor. The room has tall windows along its northern wall, and a single large window in the eastern end, providing a lot of natural light. Thick velveteen curtains hang in these windows, in order to shut out daylight when necessary. The focus of the hall is the stage, which is in the western end and backs onto the gymnasium space. A central short wooden stair leads from the floor to the stage. In one corner is a full-size upright piano, which would have been used during morning hymns in the school assembly. The Hall is accessible from the playground to the north and the corridor to the south.

3.9 Southern extension

(Figures 5-8)

- 3.9.1 The southern extension to Block A is an addition to the main school structure, and although formed of similar materials, is different enough to indicate a slightly later date. The block is constructed of a steel frame, using I-beams 180mm by 202mm, and clad in bricks each 221mm by 105mm by 62mm. The floors are each formed of precast concrete panels 0.50m wide supported by horizontal beams. The roof is formed of corrugated steel panels.
- 3.9.2 The layout of the three floors is virtually identical. There is a principal room on the east side: on the ground floor, this is the **Special Needs** classroom (A009), on the first floor is the **English Classroom** (A104), with a corridor subdivided with a partition wall (A107). The second floor has the **Geography Classroom** (A203), and the third floor the **Maths Classroom** (A303), which is also partitioned to form a short corridor (A306) to the main body of Block A. The southwest corner of each floor contains a small subsidiary to the larger: a small office is present on the ground and third floors (A010 and A304), and a store on the first and second (A105 and A204).
- 3.9.3 A flying dog-leg stair without risers in a glazed stairwell rises up the northwest corner of the extension. The treads are wooden and the balusters have a round profile. The handrail is metal.

- 3.9.4 Access to the ground floor is through a door on the western side, and a door also leads into the Special Needs classroom. On the upper floors, as well as access from the stairwell, there is access from the main north-south corridors.

3.10 Block B

(Figures 5-8)

- 3.10.1 The area defined as Block B is a part one-storey, part two-storey and part four-storey extension to Block A, containing a boiler room, showers, lavatories and staff rooms on the ground floor with classrooms on the upper floors. The construction of Block B is based on a frame of steel I-beams, with brick used on the exterior walls; interior partitions are formed of breeze blocks. The floors surfaces within are all believed to have been tiled, but the tiles had been removed prior to recording. The floors are formed of east-west horizontal I-beams, effectively principal joists, with thin precast concrete slabs (common joists) between. Atop the common joists are close-fitting precast slabs that form the floor surface. The roof is constructed of steel and wood with an asphalt surface. Large I-beam wall-plates lie atop the walls, and east-west I-beams are bolted to these. Timber joists are set parallel to the I-beams and wooden boards laid atop.
- 3.10.2 Internally, the walls are painted over plaster, and positions of black-or white-boards are rarely visible. The ceilings are all set beneath structural beams, cabling and pipework. Simple un moulded skirting boards are present in each room. All lights appear to have been striplights except for those in the stairwell.
- 3.10.3 The **Boiler Room** (B005) is smaller than the main basement boiler room, and may therefore supply only limited amounts of hot water: possibly only for the showers and changing rooms, or possibly a separate closed system only serving Block B. The Boiler Room is only accessed by a door on the northeast corner of Block B. It contains plant including a gas-fired water heater from A O Smith Water Products Company, a pressure booster and a pressurisation unit manufactured by Flow-Mech Products Ltd, a temperature control by Commtech Control Systems and a number of pumps. This part of the building is single storey.
- 3.10.4 Directly east of the Boiler Room are the **Shower Room** (B006) and then the **Boys Changing Room** (B007), both with tiled floors and walls. The rooms are lit by skylights with square covers. Access to the shower room is from the changing room and the outside. There is also access to the **Boys WC** (B009) from the Changing Room, and the principal changing room door leads from the main corridor of Block A, close to the doors to the Gymnasium. No fittings were present in the shower or changing room at the time of recording.
- 3.10.5 The **Boys' WC** (B009) and the **Girls' WC** (B010) are arranged back-to back, with cisterns for both accessed along a narrow service corridor between the two (B008). The boys' room can be accessed from the changing rooms and from the corridor to the south, whereas the girls' WC was accessible only from the corridor. The fittings within reflect the difference between the sexes: no urinals in the Girls WC.
- 3.10.6 The **Corridor** (B011 and B002) that accesses the two WCs is partitioned by a set of doors, and is accessed from the outside from the south and the west, both through sets of double doors. At the eastern end of the corridor is a small **Cleaners Store** (B012) with a small sink inside. This corridor also accesses a **History Classroom** (B013) and the **Staff Room** (B003).
- 3.10.7 The History Classroom is well lit by natural light, its windows facing south. At the time of recording, the ceiling had been removed, revealing an east-west steel girder and precast concrete slabs

- forming the floor of the room above. Three small cubicles at the northwest corner of the room had recently been removed. The floor may have been tiled, but it had been removed prior to recording, leaving patches of glue over a concrete slab.
- 3.10.8 The staff room is divided into two areas (B003 and B004), one area smaller, and may have been a subdivision for smokers or possibly senior staff. No fittings remained. Access to the staffroom is from the corridor to the south, and a door directly to the exterior on the western wall. One structural feature was present: a large square pillar, presumed to be a clad I-beam supports the main western wall of Block B on the first floor above.
- 3.10.9 An access stair to the upper floors rises in the southwestern part of the block (B001), although there is also direct access from Block A on each floor. The staircase is a flying dog-leg stair, the supporting beams enclosed in plasterboard. The balusters have a square profile and a flat banister atop which terminates on the ground floor with a downward bend. Very little natural light lights this stairwell: there are a pair of high-level windows on each floor that light the landings, but the mid-floor landings are lit by circular wall-mounted lights. The floors of the stairwell are formed of narrow precast concrete joists with a second layer of precast beams above that form the floor proper.
- 3.10.10 On the upper floors, a principal corridor runs from the stairwell to Block A (B104, B204, B304). Two rooms lie to the north of the corridor on each floor, but only the first floor has a room on the south side. This first floor room is a **Geography Classroom** (B105), with a set of large windows on its south end. The room has been cleared of all evidence of its use. The two rooms north of the first floor corridor are both **Maths Classrooms** (B102 and B103), with large windows in the north wall. The eastern of the two rooms has additional light from a window in the east wall, and the western of the two has a high level window in the west wall.
- 3.10.11 The second floor contains two classrooms north of the corridor, both **English Classrooms** (B202 and 203). Their layout is identical to those of the first floor, with windows in the same positions. Radiators are located under the windows, and the walls show evidence of panels or boards once mounted which would have held displays. The western room (B203) contained several small posters displaying proficiency levels of English language on the south wall next to the door.
- 3.10.12 The third floor is occupied by a **History Classroom** (B302) in the west and a **Science Laboratory** (B303) in the east. The History classroom had no evidence of its use, whereas the Science Laboratory still had posters on the walls and windows with a biology bias. One poster on the wall of the Laboratory has the 'Northbrook Statement':

Staff and pupils learn together;

All children can learn;

Northbrook School will be a positive force for learning.

3.11 Construction Detail

- 3.11.1 The floor levels of the schools show great uniformity, each floor is level, each floor has virtually the same height to the ceiling, and the layers constructing the floors are of identical thickness. This is the same for all blocks and is most easily shown in a table:

Description	Thickness
Ground Floor room height	3.04m
First Floor floor	0.31m

First Floor room height	3.03m
Second Floor floor	0.31m
Second Floor room height	3.04m
Third Floor floor	0.31m
Third Floor room height	3.03m
Roof thickness	0.46m
Total	13.53

3.12 Block C

3.12.1 Block C is a small, lightweight prefabricated building in the northwest corner of the playground. It is separated into five rooms: two practice rooms, two music rooms and an office. The block itself is of lightweight construction, with a lot of light supplied by windows in the south walls. The base is a brick plinth, and vertical members rise from this, to which panels and windows are affixed. The roof is flat, and the structure is very much a temporary building.

4 Conclusions and Interpretation

- 4.1 Northbrook school, dating from the mid-1950s and finally opening in 1957 with more recent alterations, contained few obvious features of decorative or architectural merit, but it is a good example of utilitarian post war design and represents a major break from earlier forms of school building.
- 4.2 The function of the school is to teach. All principal classrooms are laid out to minimise intrusive sunlight onto black/white boards and other teaching displays. The rooms are fairly large and generally well-lit, likely to be an ergonomic design to encourage the receptiveness of pupils: instead of a dark, potentially oppressive environment, the classrooms are light with high ceilings. However, a large amount of ancillary activities were also supported (ablutions, facilities for warmth and comfort, facilities providing welfare for the teachers or other sub-groups of the building's users such as maintenance and support staff.
- 4.3 The school architecture owes a debt to the post war contributions of Robert Hogg Matthew, architect to the London County Council from 1946 to 1953: the building has simple architecture, rational and un-monumental. The majority of Block A appears to be a single build, with only subtle alterations throughout its use. Alterations and enlargement of Block A was carried out in a sympathetic and congruent style, resulting in a building that is well proportioned retains its style despite the extension on the southern end and the construction of Block B. Subtle alterations have clearly been made: all the windows are prefabricated plastic and aluminium, and these are likely to have replaced similar windows to retain the lightness of structure and form.
- 4.4 The practicalities of the school are also apparent through the location of the rooms. The ground floor contains administration rooms and the teachers' rooms: Headteacher, Deputy Heads, and a general staffroom. Their location near to the main entrance makes easy access for any visitors to the school. The Kitchen is also on the ground floor: it is unclear whether or not the kitchen could have catered for the entire school attendance, or where the Dining Hall was: perhaps the Main Hall was used for that purpose. The kitchen is almost adjacent to the main hall, so would be very accessible. The sports hall and attendant changing rooms and showers are also on the ground floor. Both the boys and the girls changing rooms give easy access to the sports hall and to the outside. The location of these rooms on the ground floor is most likely to be to facilitate easy access: the changing rooms and showers would need to be near exits, for ease of access and to avoid spreading mud around the school. The soiled sports wear would spread less mud if located close to exits, and equally practical
- 4.5 The third floor is dominated by the Science Classrooms, whereas the other classrooms are spread generally around the other floors. The library's location on the second floor makes it equally accessible from most points in the school. The Special Needs classroom is located on the ground floor, near the Taunton Road entrance to the school, and is therefore very accessible for pupils who may require easy access.
- 4.6 The movement of pupils is enabled by numerous corridors and staircases. Presumably, all lessons would finish at the same time, so there would be regular mass migration of pupils. A 'keep left' order would help, or, in the case of the main staircases of Block A, one could have been used for pupils going up, the other for pupils going down.
- 4.7 In total there are the 26 classrooms, split into the following departments:

Classroom	Quantity
English	4

Maths	4
Science	3
Science Lab	2
Geography	2
Languages	2
History	2
Technology	2
Art	1
Computer	1
Library	1
General Classroom	1
Sports	1
Special needs	1

- 4.8 In the 1950s, 75% of school children attended either technical college or secondary modern schools. Those who passed the 11-plus examination went to Grammar Schools. Most secondary modern teaching had a vocational basis, and there would have only been one modern foreign language on offer, most frequently French. The teaching of sciences would also have been limited. Music and art was available were seen by many as having dubious value. However, there appears to have still been an art department at Northbrook School and a music department up until its closure for redevelopment. There was no evidence for a music department present in the 1950s, but music was a common subject in most post-war schools.
- 4.9 Most schools in the 1950s were single sex, so Northbrook school may be seen as advance for its period. There are many sports facilities, although these would have been defined either as a boys' game such as football, cricket or rugby, or as a girls' games: netball and rounders. The pupils at the school used the parkland to the northwest for sports beyond the schools facilities.
- 4.10 Religious education (RE) has an important place in all schools, but particularly in Church of England Schools such as Northbrook. There is little evidence of direct Christian teaching in the school. The only Christian object remaining was the large frieze or mural on the south wall of the Main Hall. No classrooms contained religious displays. And neither hymn-books nor bibles were present in any stores or rooms. It was taken by all pupils right through their academic career, from primary to secondary school. The subject had an entirely Christian content and was delivered with seriousness and conviction as something relevant to everyday life. There was no teaching of other religions. However, the religious view was not overtly imposed. Rather it was simply accepted that the Christian view was a natural mindset for 'men of good will'. Daily collective worship during school assembly was the law. Religious Education must still be provided for all registered pupils in full time education except those withdrawn at the request of their parents.
- 4.11 The Department for Children, Schools and Families league tables of 1994 (*DCSF 1995*) show that there were 377 pupils, aged 11-16, including 10 special needs pupils, at Northbrook School. This would suggest five year-groups with between 73-74 pupils in each year, perhaps three classes per year, of up to thirty pupils. This would suggest at least twenty members of staff, including teachers for Maths, English, History, Geography, the three Sciences, Computing, Art, at least one of each sex for Sports, as well as Religious Instruction. The senior staff may have taught as well as being deputy heads. The music rooms, located as they are in Block C, keeps any noise to a minimum, to avoid

disturbing hard-studying pupils in the main block. There is not a classroom specified for Religious teaching or worship. Possibly, the main hall with its piano was used for this.

- 4.12 Despite its modern date, there are associations with the school that will come to be seen as historical, for example, the opening of the school by Princess Margaret, the Queen's sister. When the school was opened in 1957, she was only 27 years old, still young enough to be an inspiration to children, and of the 80-plus organisations of which she was Patron or President many are concerned with activities for young people and children's well-being.

5 Bibliography

AOC Archaeology Group Ltd (2008): *Northbrook School, Taunton Road, Lee Green, London Borough of Lewisham: A Written Scheme of Investigation for a Historic Building Record*

Atkins Heritage 2007. *Northbrook School, Lewisham, Cultural Heritage Desk Based Assessment.*

Atkins Heritage 2008. *Northbrook School, Lewisham, Specification for Photographic Recording.*

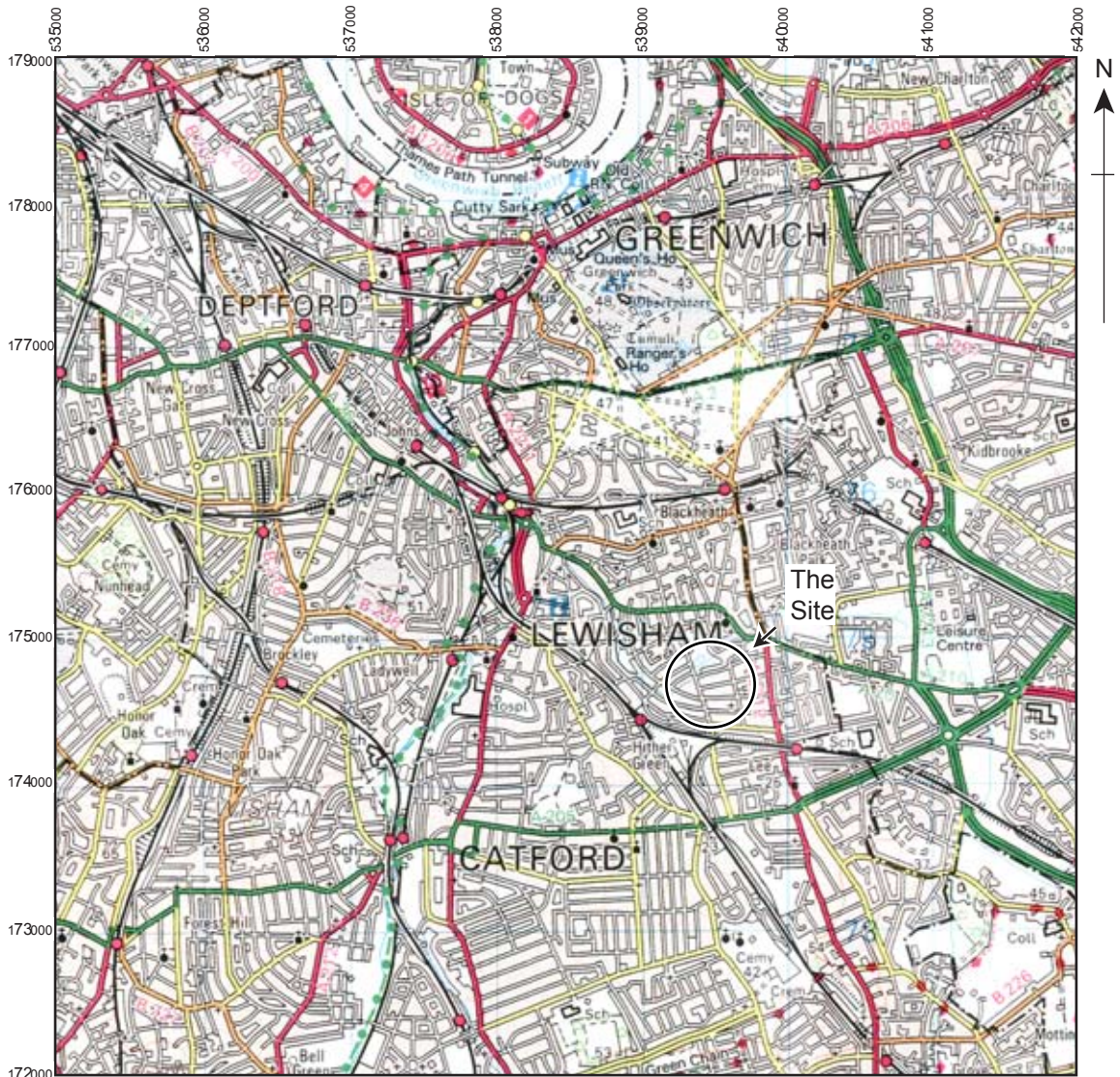
DCSF 1995: www.dcsf.gov.uk/performance/tables/archives/schools_94/h209/x2094636.shtml

English Heritage 2006. *Understanding Historic Buildings: a guide to good recording practice.*

Institute of Field Archaeologists 1997. *Code of Conduct.*

Museum of London 1994. *Archaeological Site Manual*

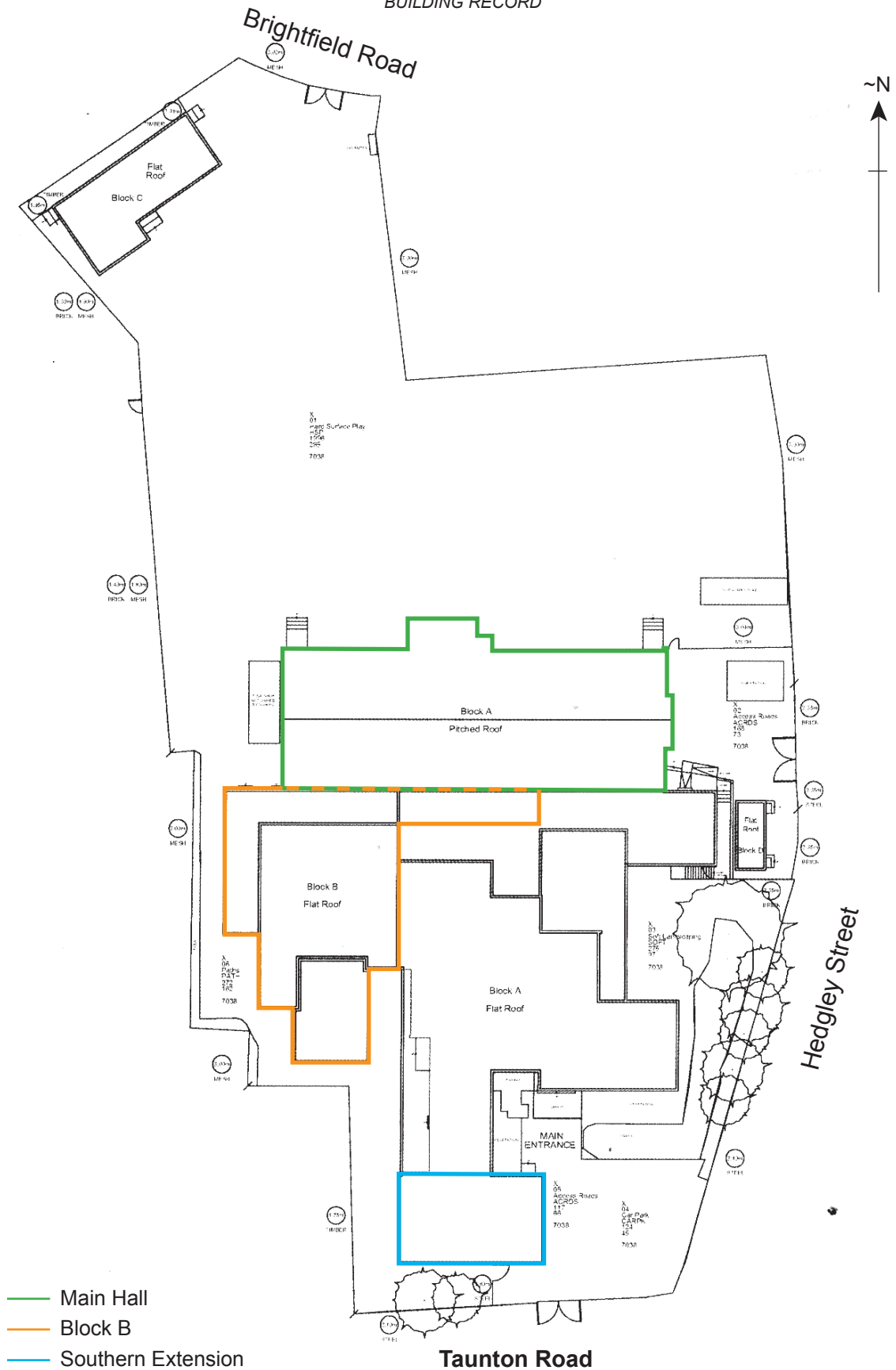
Northbrook Church of England School 2008 <http://www.northbrook.lewisham.sch.uk/?page=aboutus>



Based on the Ordnance Survey's 1:50 000 Landranger Map of 2004 with the permission of the Controller of Her Majesty's Stationary Office, © Crown Copyright. Licence No. AL 1000 16114



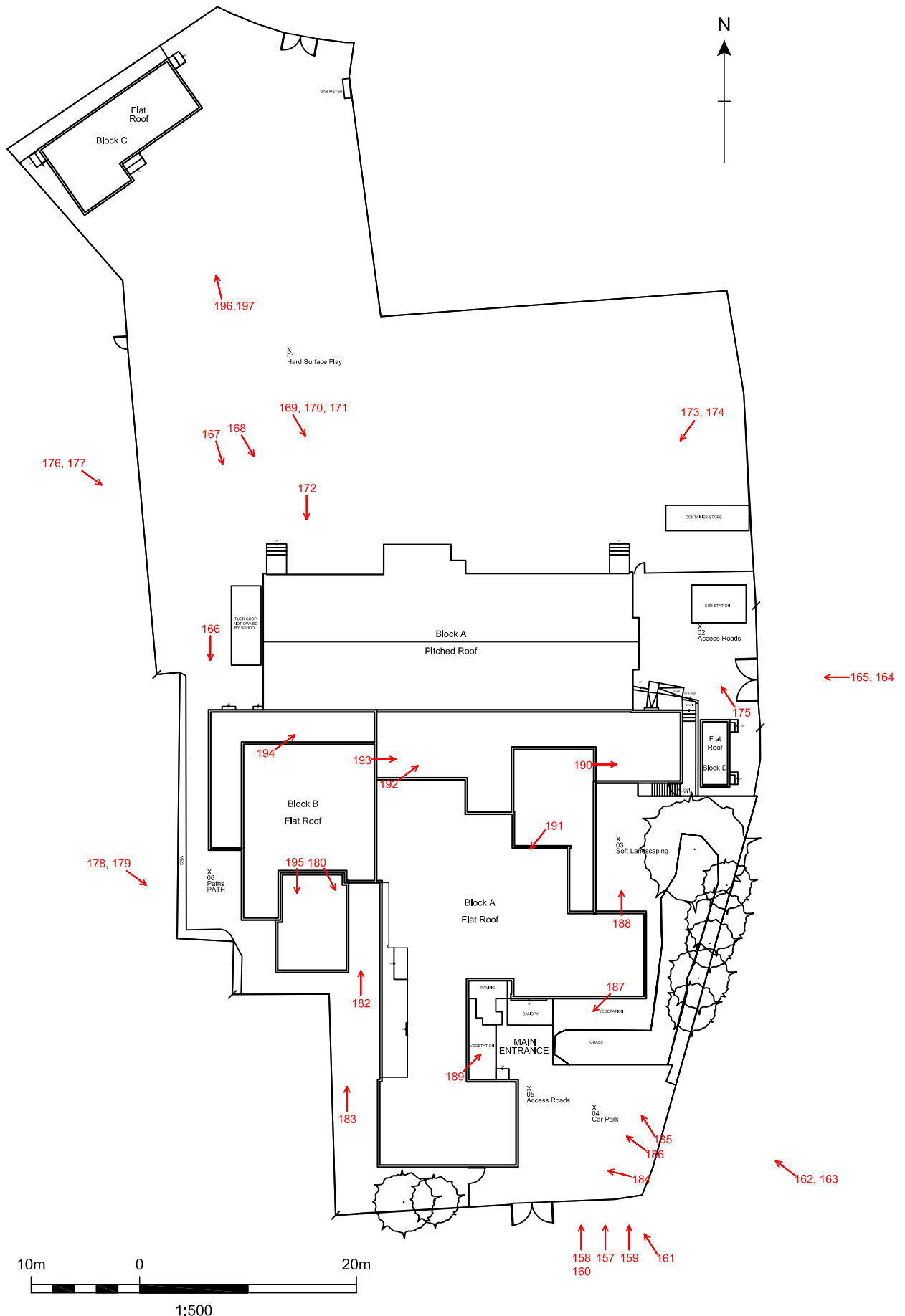
Figure 1: Site Location



Based on the Plans Provided by Lewisham Directorate of Education and Culture

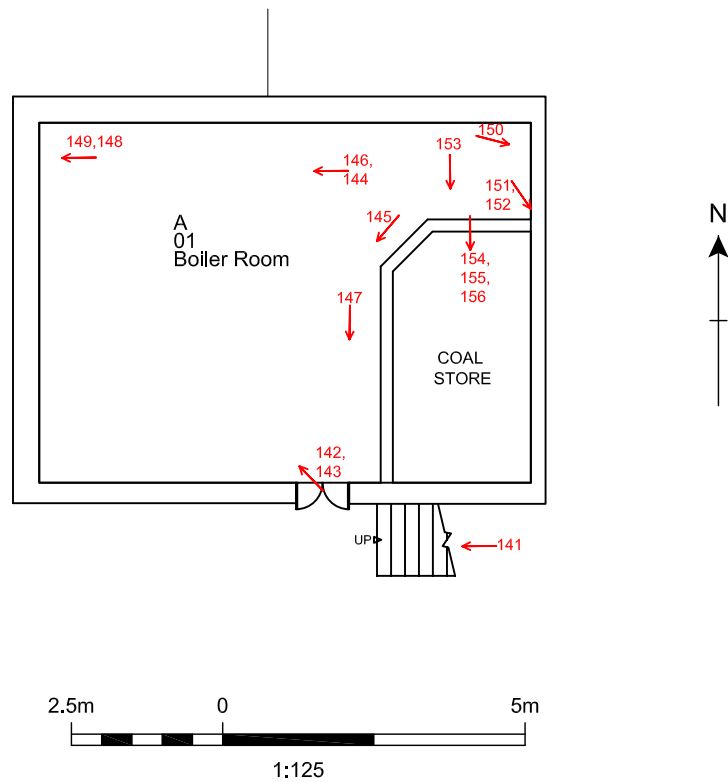
Figure 2: Detailed Site Location (Not To Scale)

NORTHBROOK SCHOOL, TAUNTON ROAD, LEE GREEN, LONDON BOROUGH OF LEWISHAM:
A HISTORIC BUILDING RECORD



Based on the Plan Produced by EDL

Figure 3: Photographic Locations: Exterior



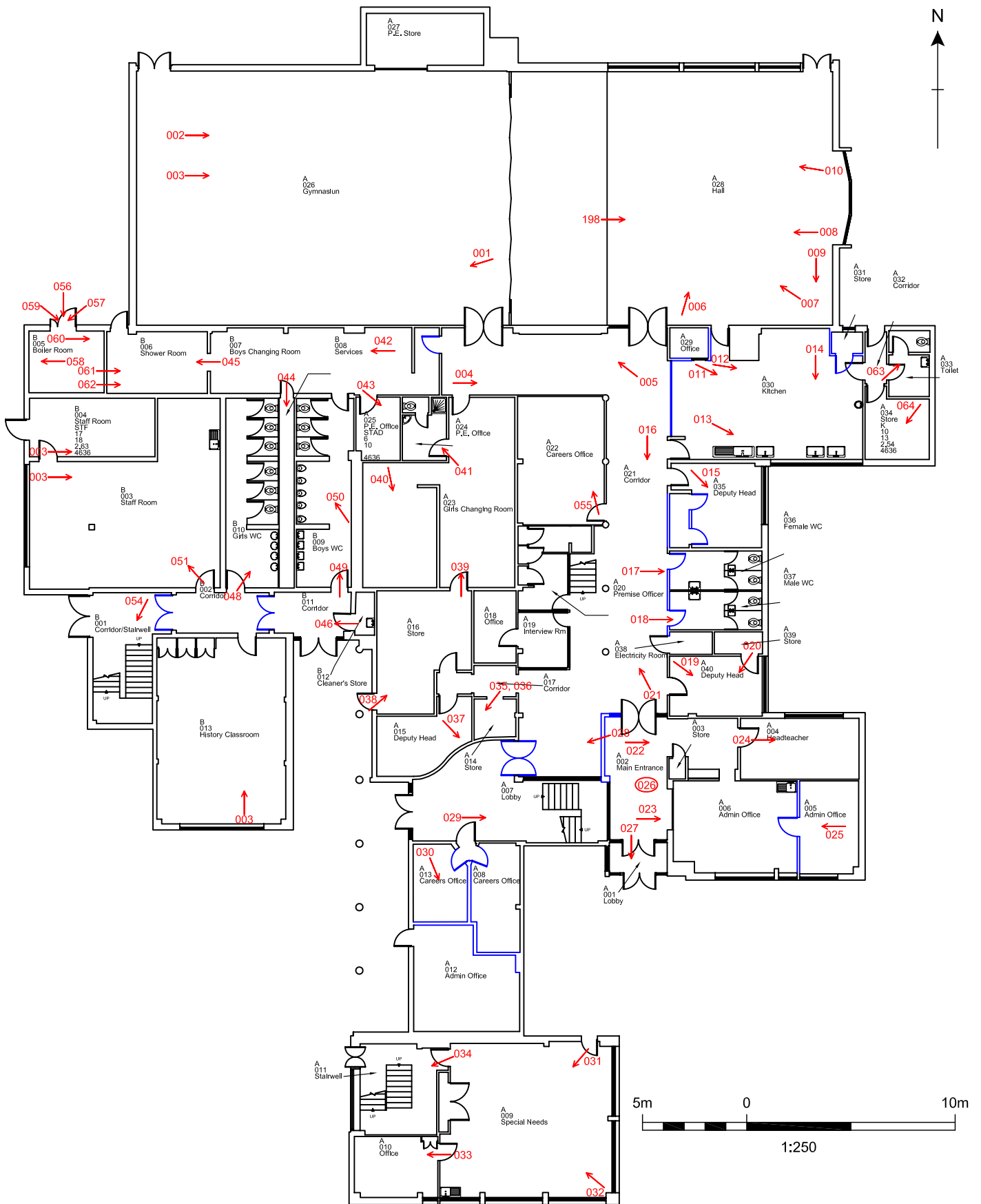
Based on the Plan Produced by EDL

Figure 4: Photographic Locations: Basement

□ Not Present at Time of Photographic Recording

○ Photographs Taken Straight Up

NORTHBROOK SCHOOL, TAUNTON ROAD, LEE GREEN, LONDON BOROUGH OF LEWISHAM:
A HISTORIC BUILDING RECORD



Based on the Plan Produced by EDL

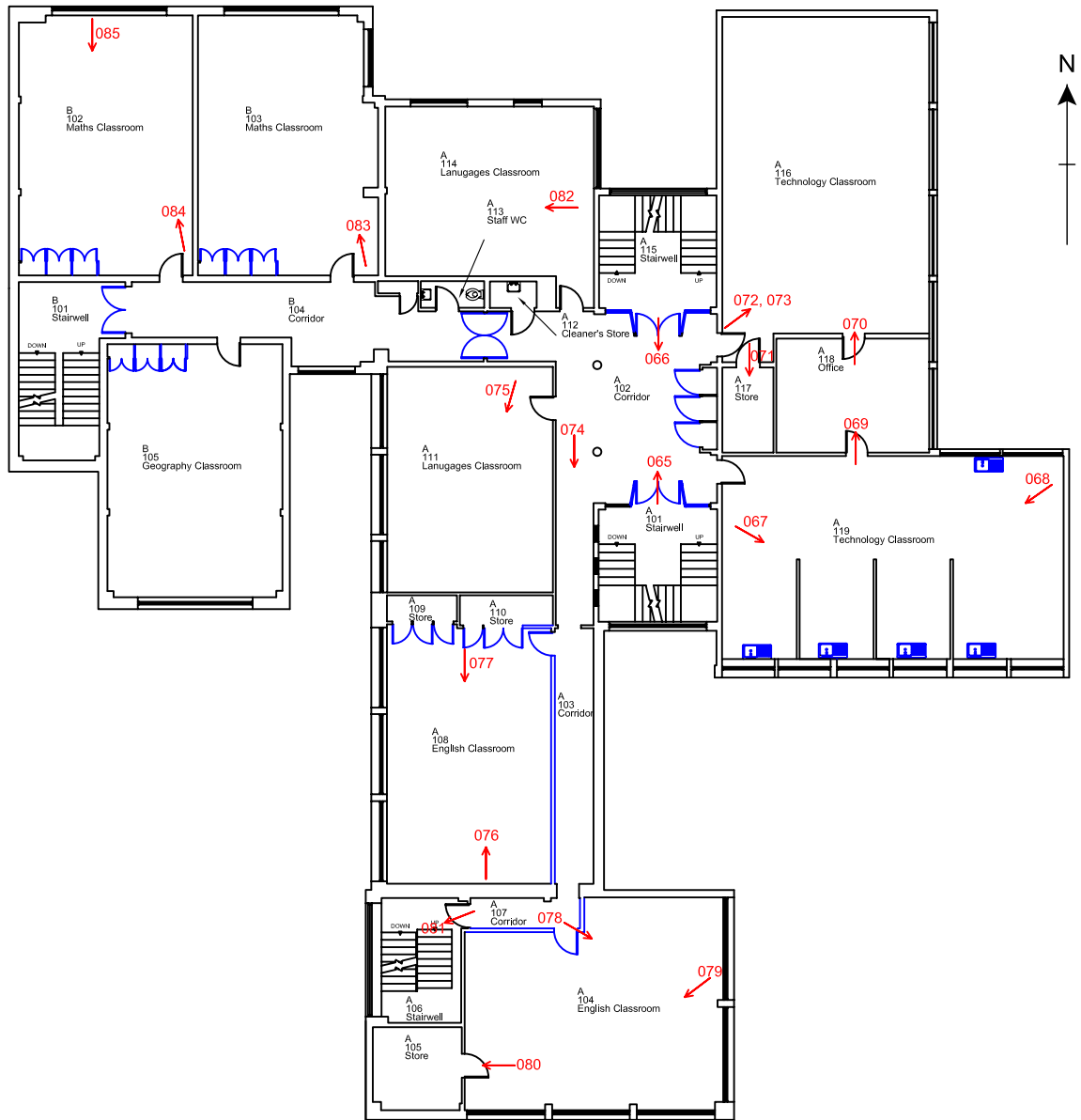
Figure 5: Photographic Locations: Ground Floor

□ Not Present at Time of Photographic Recording

○ Photographs Taken Straight Up

© AOC ARCHAEOLOGY GROUP - OCTOBER 2008

NORTHBROOK SCHOOL, TAUNTON ROAD, LEE GREEN, LONDON BOROUGH OF LEWISHAM:
A HISTORIC BUILDING RECORD

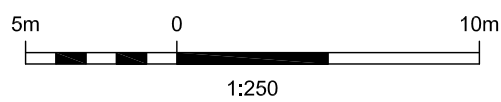
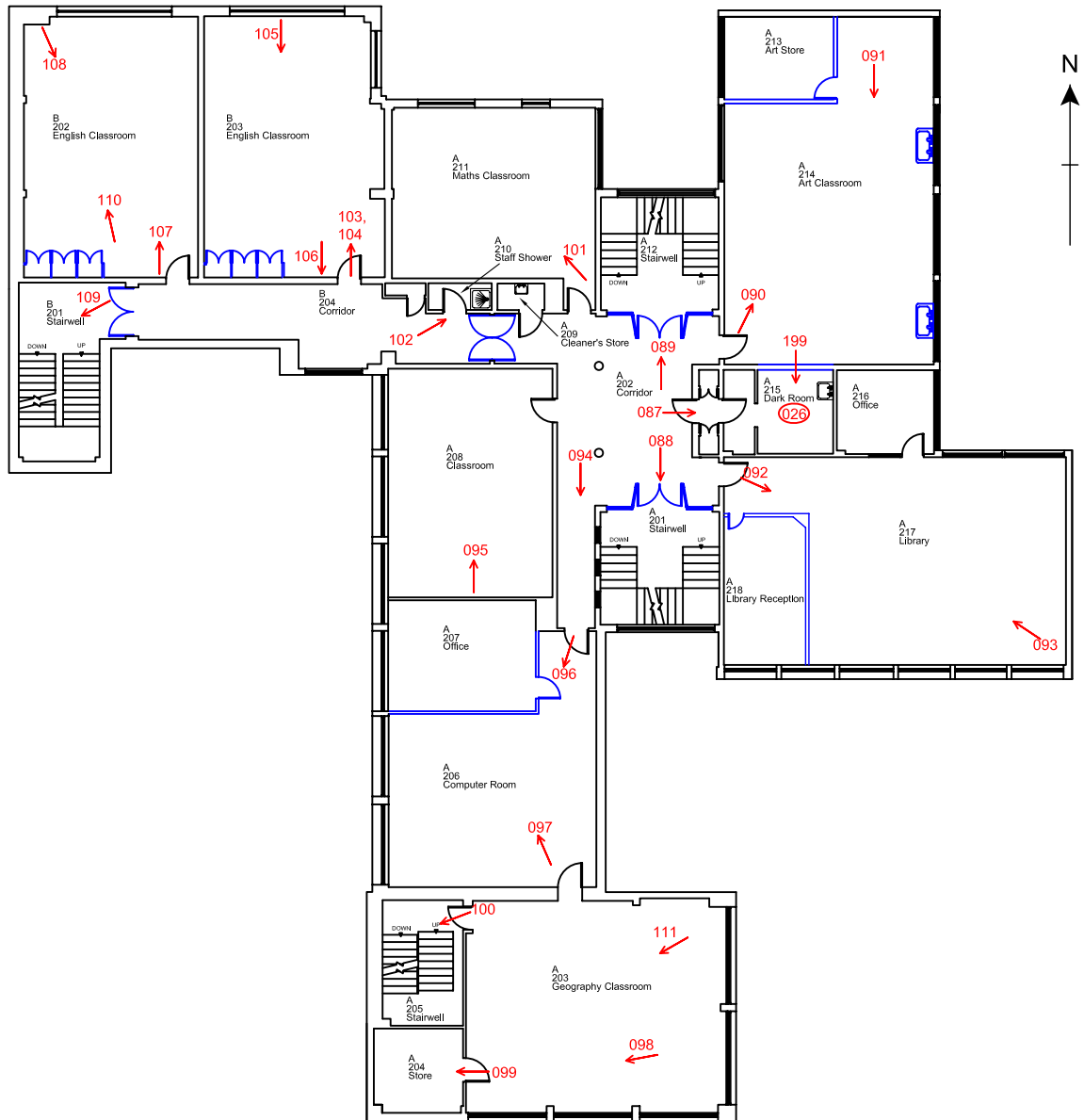


1:250

Based on the Plan Produced by EDL

Figure 6: Photographic Locations: First Floor
 Not Present at Time of Photographic Recording

NORTHBROOK SCHOOL, TAUNTON ROAD, LEE GREEN, LONDON BOROUGH OF LEWISHAM:
A HISTORIC BUILDING RECORD



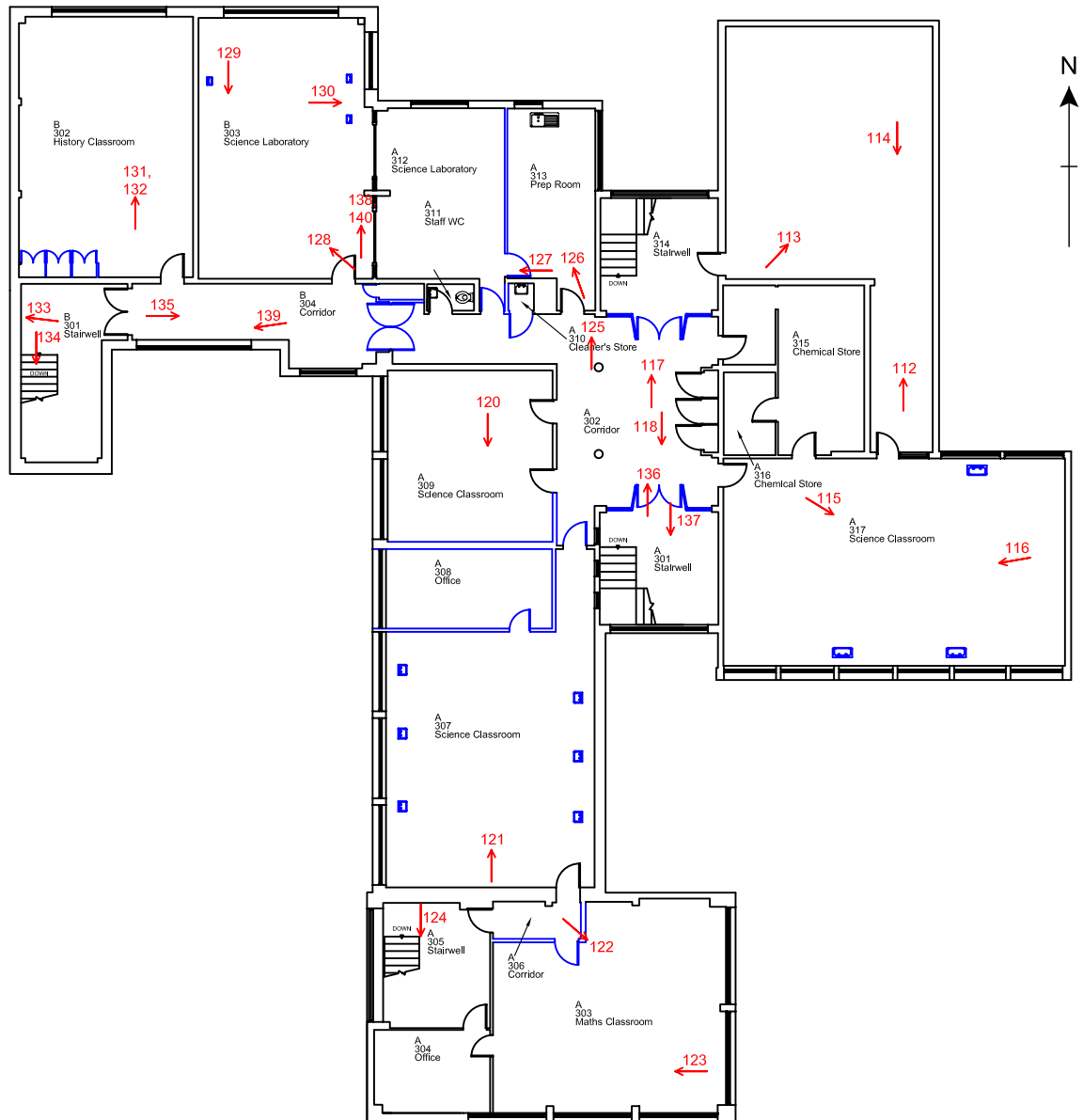
Based on the Plan Produced by EDL

Figure 7: Photographic Locations: Second Floor

□ Not Present at Time of Photographic Recording

○ Photographs Taken Straight Up

NORTHBROOK SCHOOL, TAUNTON ROAD, LEE GREEN, LONDON BOROUGH OF LEWISHAM:
A HISTORIC BUILDING RECORD



1:250

Based on the Plan Produced by EDL

Figure 8: Photographic Locations: Third Floor
 Not Present at Time of Photographic Recording

Plates



Plate 1: School exterior, looking northwest



Plate 2: School exterior looking south



Plate 3: Boiler Room, basement



Plate 4: Gymnasium, looking west



Plate 5: Ground Floor Christian mural, looking northwest



Plate 6: Ground Floor Main corridor, looking south



Plate 7: Ground Floor Northern stairwell, looking northwest



Plate 8: Ground Floor Staffroom, looking northwest



Plate 9: Ground Floor History Classroom looking north



Plate 10: First Floor Technology Classroom, looking southeast



Plate 11: First Floor Corridor looking south



Plate 12: Second Floor Art Classroom looking north



Plate 13: Second Floor classroom looking north



Plate 14: Second Floor Extension Stairwell, looking southwest



Plate 15: Second Floor English Classroom looking south

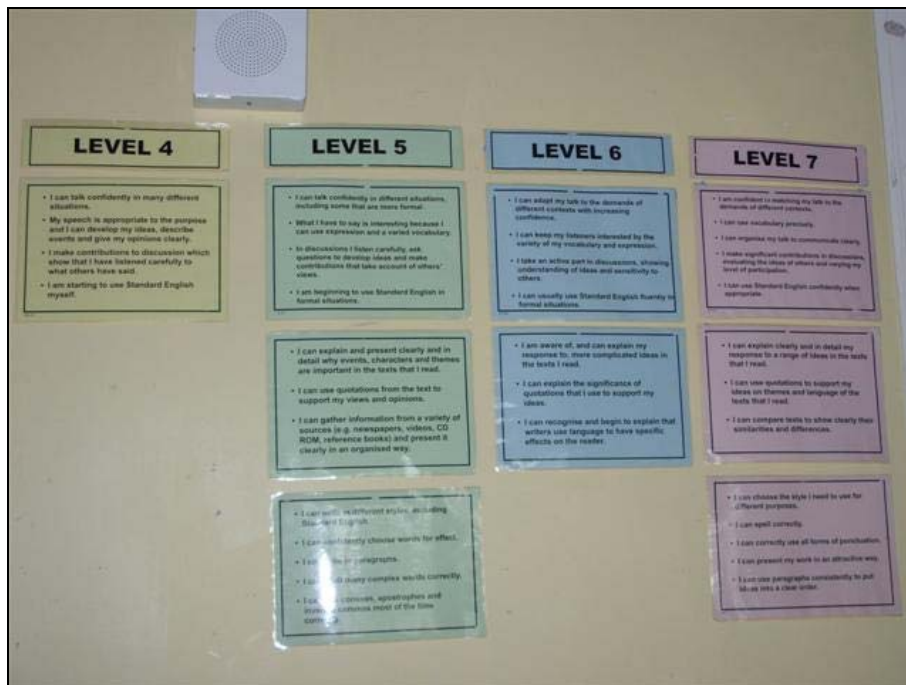


Plate 16: Second Floor English Classroom looking south



Plate 17: Roof Garden looking north



Plate 18: Third Floor Science Classrooms looking south



Plate 19: Third Floor Block B corridor



Plate 20: Third Floor Main south stairwell



Appendices

Appendix A, Photographic Register

Photo	Description	View	Digital	B/W	Colour
000	Site Identity	--	Y		
001	A026, Gymnasium	W	Y	Y	Y
002	A026, Gymnasium	E	Y	Y	Y
003	A026, Gymnasium	E	Y		
004	A021, Corridor	E	Y		
005	A021, corridor, mural	NW	Y	Y	Y
006	A028, Hall	NE	Y	Y	Y
007	A028, Hall	NW	Y	Y	Y
008	A028, Hall	W	Y	Y	Y
009	A028, Hall	S	Y		
010	A018, Office	NW	Y		
011	A030, Kitchen	SE	Y		
012	A031, Store	SE	Y		
013	A030, Kitchen	SE	Y	Y	Y
014	A030, Kitchen	S	Y		
015	A035, Deputy Head	SE	Y		
016	A021, Corridor	S	Y		
017	A036, Female WC	E	Y		
018	A037, Male WC	E	Y		
019	A040, Deputy Head	E	Y		
020	A040, Deputy Head	SW	Y		
021	A021, Corridor	NW	Y	Y	Y
022	A002, Main Entrance	E	Y		
023	A006, Admin Office	E	Y		
024	A004, Head Teacher	E	Y		
025	A006, Admin office	W	Y	Y	Y
026	A002, Main Entrance	--	Y	Y	Y
027	A001, Lobby	S	Y		
028	A007, Lobby (south stairs)	SW	Y		
029	A007, Lobby (south stairs)	E	Y		
030	A001, 002, 013,	S	Y		
031	A009, Special Needs	SW	Y	Y	Y
032	A009, Special Needs	NW	Y		
033	A010, Office	SW	Y		
034	A011, Stairwell	SW	Y		
035	A014, Office	SW	Y		
036	A014, Office	SW	Y		
037	A015, Deputy Head	SE	Y		
038	A016, Store	NE	Y		
039	A023, Girls Changing Room	N	Y		
040	A023, Girls Changing Room	S	Y		
041	A024, PE Office	NW	Y		
042	B007,	W	Y		
043	A025, PE Office	SE	Y		
044	B008, Services	S	Y		
045	B006, Shower Room	W	Y		
046	B011, Corridor	W	Y	Y	Y

Photo	Description	View	Digital	B/W	Colour
047	B013, History Classroom	N	Y		
048	B010, Girls WC	NE	Y		
049	B009, Boys WC	NW	Y		
050	B009, Boys WC	NW	Y		
051	B003, Staff Room	NW	Y		
052	B003, Staff Room	NE	Y		
053	B003, Staff Room	SW	Y		
054	B001, Corridor/Stairwell	SW	Y		
055	A022, Careers Office	N	Y		
056	B005, Boiler Room	S	Y	Y	Y
057	B005, Boiler Room	SW	Y		
058	B005, Boiler Room	W	Y		
059	B005, Boiler Room	S	Y		
060	B005, Boiler Room	E	Y		
061	B005, Boiler Room	E	Y		
062	B005, Boiler Room	E	Y		
063	A033, Lavatory	NE	Y		
064	A034, Store	SW	Y		
065	A102, 115, Corridor and north stairwell	N	Y		
066	A102, 101, corridor and south stairwell	S	Y	Y	Y
067	A119, Technology Classroom	SE	Y		
068	A119, Technology Classroom	SW	Y		
069	A118, Office	N	Y		
070	A116, Technology Classroom	N	Y	Y	Y
071	A117, Store	S	Y		
072	A116, Technology Classroom	NE	Y		
073	A116, Technology Classroom	NE	Y		
074	A103, Corridor	S	Y	Y	Y
075	A111, Languages Classroom	S	Y		
076	A108, Technology Classroom	N	Y	Y	Y
077	A108, Technology Classroom	S	Y		
078	A104, English Classroom	SE	Y	Y	Y
079	A104, English Classroom	SW	Y		
080	A105, Store	W	Y		
081	A106, Stairwell	SW	Y	Y	Y
082	A114, Languages Classroom	W	Y		
083	B103, Maths Classroom	N	Y		
084	B102, Maths Classroom	N	Y		
085	B102, Maths Classroom	S	Y	Y	Y
086	A215, Dark Room	--	Y		
087	A215, Dark Room	E	Y		
088	A202, 201, Corridor and south stairwell	S	Y	Y	Y
089	A202, 212, Corridor and north stairwell	N	Y		
090	A214, Art Classroom	NE	Y	Y	Y
091	A215, Dark Room	S	Y		
092	A217, Library	SE	Y	Y	Y
093	A217, Library	NW	Y		
094	A202, Corridor	S	Y		

Photo	Description	View	Digital	B/W	Colour
095	A208, Classroom	N	Y		
096	A206, 207, Computer room and office	S	Y		
097	A206, 207, Computer room and office	NW	Y		
098	A203, Geography Classroom	W	Y	Y	Y
099	A204, Store	W	Y		
100	A205, Stairwell	SW	Y		
101	A211, Maths Classroom	NW	Y		
102	A210, Staff Shower	NE	Y		
103	B203, English Classroom	NW	Y	Y	Y
104	B203, English Classroom	NW	Y		
105	B203, English Classroom	S	Y		
106	B203, English Classroom	S	Y		
107	B202, English Classroom	N	Y		
108	B202, English Classroom	S	Y	Y	Y
109	B201, Stairwell	SW	Y	Y	Y
110	B202, English Classroom	NW	Y		
111	A203, Geography Classroom	SW	Y		
112	Roof Garden	N	Y	Y	Y
113	Roof Garden	NE	Y		
114	Roof Garden	S	Y		
115	A317, Science Classroom	SE	Y		
116	A317, Science Classroom	SW	Y		
117	A302, 314, Corridor and north stairwell	N	Y	Y	Y
118	A302, 301, Corridor and south stairwell	S	Y	Y	Y
119	A302, Corridor	S	Y		
120	A307, 308, 309, Science Classrooms	S	Y	Y	Y
121	A307, 308, 309, Science Classrooms	N	Y		
122	A303, Maths Classroom	SE	Y	Y	Y
123	A303, Maths Classroom	W	Y		
124	A305, Stairwell	S	Y		
125	A302, Corridor	N	Y		
126	A312, 313, Science Lab and Prep room	NW	Y		
127	A312, 313, Science Lab and Prep room	W	Y		
128	B303, Science Laboratory	N	Y		
129	B303, Science Laboratory	S	Y		
130	B303, Science Laboratory	E	Y		
131	B302, History Classroom	N	Y		
132	B302, History Classroom	N	Y		
133	B301, Stairwell roof	W	Y		
134	B301, Stairwell	S	Y		
135	B304, Corridor	E	Y		
136	A302, Corridor	N	Y		
137	A301, South stairwell	S	Y		
138	B303, Science laboratory ceiling	N	Y		
139	B304, Corridor ceiling	SW	Y		
140	B303, Science laboratory ceiling	N	Y		
141	Basement entrance	W	Y		
142	AO1, Plant	NW	Y		

Photo	Description	View	Digital	B/W	Colour
143	AO1, Plant	NW	Y		
144	AO1, Plant	W	Y	Y	Y
145	AO1, Plant	SW	Y	Y	Y
146	AO1, Plant	W	Y		
147	AO1, Plant	S	Y		
148	AO1, Plant	W	Y		
149	AO1, Plant	W	Y		
150	AO1, eastern part	E	Y		
151	AO1, eastern part	SE	Y		
152	AO1, eastern part	SE	Y		
153	AO1, Coal store	SE	Y		
154	AO1, Coal store	S	Y		
155	AO1, Coal store	S	Y		
156	AO1, Coal store	S	Y		
157	Exterior view, south elevation	N	Y	Y	Y
158	Exterior view, south elevation	NW	Y	Y	Y
159	Exterior view, south elevation	N	Y		
160	Exterior view, south elevation	NW	Y		
161	Exterior view, south elevation	NW	Y		
162	Exterior view, east elevation	NW	Y	Y	Y
163	Exterior view, east elevation	NW	Y		
164	Exterior view, east elevation	W	Y	Y	Y
165	Exterior view, east elevation	W	Y		
166	Exterior view, boiler room	S	Y		
167	Exterior view, north elevation	SE	Y	Y	Y
168	Exterior view, north elevation	SE	Y		
169	Exterior view, north elevation	SE	Y	Y	Y
170	Exterior view, north elevation	SE	Y		
171	Exterior view, north elevation	SE	Y		
172	Exterior view, north elevation	S	Y	Y	Y
173	Exterior view, north elevation	SW	Y		
174	Exterior view, north elevation	SW	Y		
175	Exterior view, hall	W	Y	Y	Y
176	Exterior view, west side	SE	Y		
177	Exterior view, west side	SE	Y		
178	Exterior view, west side	SE	Y	Y	Y
179	Exterior view, west side	SE	Y		
180	Exterior view, west side	SE	Y	Y	Y
181	B204, Store	E	Y		
182	Exterior view, Block B	N	Y	Y	Y
183	Exterior view, Block B	N	Y		
184	Exterior view, Block A extension	W	Y	Y	Y
185	Exterior view, Block A	N	Y		
186	Exterior view, Block A	NW	Y		
187	Exterior view, Block A extension	SW	Y		
188	Exterior view, Block A	N	Y	Y	Y
189	Exterior view, Block A	NE	Y		
190	Exterior view, GF roof	E	Y		

Photo	Description	View	Digital	B/W	Colour
191	Exterior view, services roof outlet	SW	Y		
192	Exterior view, GF roof	NE	Y		
193	Exterior view, chimney	E	Y		
194	Exterior view, hall/ gym roof	NE	Y		
195	Exterior view, Block B roof	S	Y		
196	Block C,	N	Y		
197	Block C,	N	Y		
198	A028, Hall	E	Y	Y	Y
199	A215, Dark room entrance	S	Y		

Appendix B, OASIS Form

OASIS ID: aocarcha1-49639

Project details

Project name Northbrook School, Taunton Road, Lee Green, Lewisham: Historic Building Recording

Short description of the project The school was constructed in the mid-1950s. The record is primarily a photographic record, although evidence of the construction methods of the school, its materials and function has been recorded. All features described appeared to be components of the building constructed in 1957, or later additions.

Project dates Start: 17-09-2008 End: 18-09-2008

Previous/future work No / Not known

Any associated project reference codes NKS08 - Sitecode

Type of project Building Recording

Site status None

Current Land use Other 2 - In use as a building

Monument type SCHOOL Modern

Methods techniques & 'Annotated Sketch','Photographic Survey'

Prompt Direction from Local Planning Authority - PPG15

Project location

Country England

Site location GREATER LONDON LEWISHAM LEWISHAM AND BLACKHEATH Northbrook

School

Postcode SE12 8PD

Study area 0.50 Hectares

Site coordinates TQ 3950 7480 51.4544629042 0.00800305490779 51 27 16 N 000 00 28 E
Point

Project creators

Name of AOC Archaeology Group
Organisation

Project brief EH GLAAS
originator

Project design Atkins Heritage
originator

Project Edmund Simons
director/manager

Project supervisor Les Capon

Type of Developer
sponsor/funding body

Project archives

Physical Archive No
Exists?

Digital Archive Museum of London
recipient

Digital Archive ID NKS 08

Digital Contents 'Survey'

Digital available Media 'Images raster / digital photography','Text'

Digital Archive notes held at AOC until transfer

Paper recipient Archive Museum of London

Paper Archive ID NKS 08

Paper Contents 'Survey'

Paper available Media 'Notebook - Excavation',' Research',' General
Notes','Photograph','Plan','Unpublished Text'

Paper Archive notes held at AOC until transfer

Project bibliography 1

Publication type Grey literature (unpublished document/manuscript)

Title Northbrook School, Taunton Road, Lee Green, London Borough of Lewisham:
Historic Building Recording

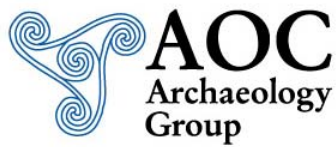
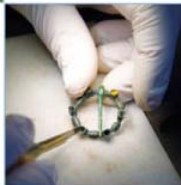
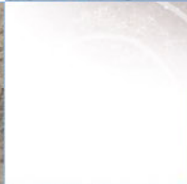
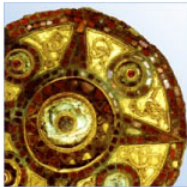
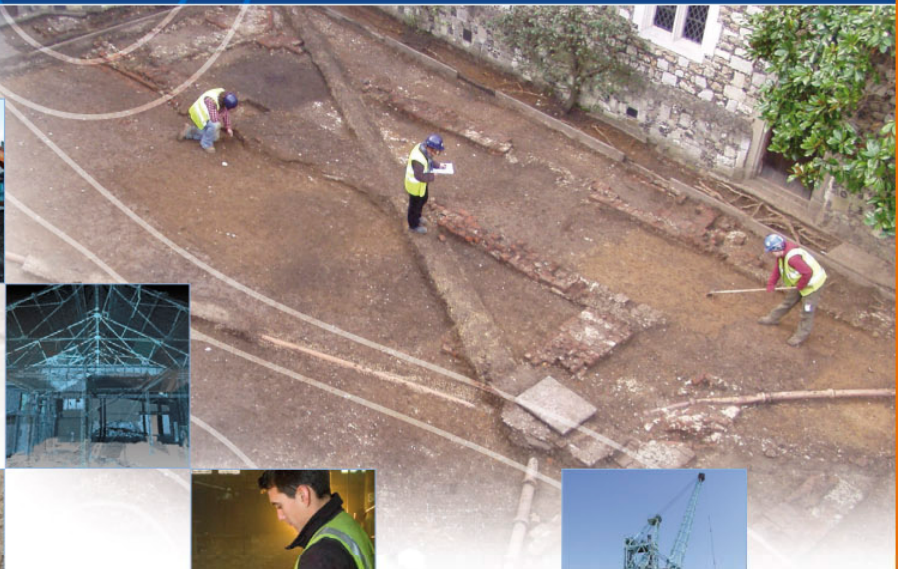
Author(s)/Editor(s) Capon, L.

Date 2008

Description A4, 50 pages, eight illustrations, 20 plates

Entered by les capon (les.capon@aocarchaeology.com)

Entered on 13 October 2008



AOC
Archaeology
Group

AOC Archaeology Group, Unit 7, St Margarets Business Centre, Moor Mead Road, Twickenham TW1 1JS
tel: 020 8843 7380 | fax: 020 8892 0549 | e-mail: london@aocarchaeology.com

www.aocarchaeology.com