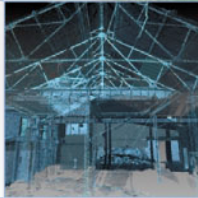
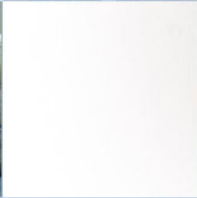


# Whitehirst Park Road, Kilwinning: Data Structure Report

20652  
May 2008



ARCHAEOLOGY

HERITAGE

CONSERVATION

## Whitehirst Park Road, Kilwinning Evaluation: Data Structure Report

<b>On Behalf of:</b>	<b>Redrow Homes (Scotland) Ltd</b> Redrow House 3 Central Park Avenue Larbert FK5 4RX
<b>National Grid Reference (NGR):</b>	<b>NS 2888 4385</b>
<b>AOC Project No:</b>	<b>20652</b>
<b>Prepared by:</b>	<b>Victoria Clements</b>
<b>Illustration by:</b>	<b>Graeme Carruthers</b>
<b>Date of Fieldwork:</b>	<b>12<sup>th</sup> – 16<sup>th</sup> May 2008</b>
<b>Date of Report:</b>	<b>May 2008</b>

This document has been prepared in accordance with AOC standard operating procedures.

**Author:** Victoria Clements

**Date:** 22/05/2008

**Approved by:** John Gooder

**Date:** 22/05/2008

**Draft/Final Report Stage:** Final

**Date:** 22/05/2008

**Enquiries to:** AOC Archaeology Group  
Edgefield Industrial Estate  
Edgefield Road  
Loanhead  
EH20 9SY

Tel. 0131 440 3593  
Fax. 0131 440 3422  
e-mail. [admin@aocarchaeology.com](mailto:admin@aocarchaeology.com)



## Contents

	<b>Page</b>
List of illustrations .....	1
List of plates .....	1
List of appendices .....	1
Abstract.....	2
<b>1 INTRODUCTION .....</b>	<b>3</b>
1.1 Background .....	3
1.2 Location.....	3
1.3 Archaeological background .....	3
<b>2. OBJECTIVES .....</b>	<b>4</b>
<b>3 METHODOLOGY .....</b>	<b>4</b>
<b>4 RESULTS .....</b>	<b>4</b>
<b>5 CONCLUSION.....</b>	<b>8</b>
<b>6 BIBLIOGRAPHIC REFERENCES.....</b>	<b>9</b>
<b>APPENDIX 1.....</b>	<b>11</b>
Trench Descriptions.....	11
<b>APPENDIX 2.....</b>	<b>19</b>
Photographic Record .....	19
<b>APPENDIX 3.....</b>	<b>21</b>
Discovery and Excavation in Scotland Report .....	21

---

## List of illustrations

Figure 1 Site location and location of evaluation trenches

## List of plates

Plate 1 Linear features in Trench 2 from west  
Plate 2 West facing section through linear features in Trench 2  
Plate 3 Carving on capstone of drain in Trench 9  
Plate 4 Carving on capstone of drain in Trench 9

## List of appendices

Appendix 1 Trench Descriptions  
Appendix 2 Photographic Record  
Appendix 3 *Discovery and Excavation in Scotland* Report

## Abstract

---

This report represents the results of an archaeological evaluation undertaken by AOC Archaeology Group on land proposed for residential development at Whitehirst Park Road, Kilwinning, North Ayrshire. The work was commissioned by Redrow Homes (Scotland) Ltd. The archaeological works were designed to satisfy the requirements of the local planning authority, as advised by the West of Scotland Archaeology Service (WoSAS), and are in accordance with the principles inherent in NPPG 5 (SOEnd 1994) and PAN 42 (SOEnd 1994a).

The objective of the work was to determine the existence of any buried archaeological remains by means of a programme of trial trenching. The work was carried out during May 2008 and was conducted according to the terms of a *Written Scheme of Investigation* (Oleksy 2007), which was agreed by WoSAS, and approved by the planning authority. The evaluation consisted of 28 trenches totalling 2960 m<sup>2</sup>.

The evaluation revealed no features or artefacts of archaeological significance. No further archaeological works are recommended.

# 1 INTRODUCTION

## 1.1 Background

- 1.1 AOC Archaeology Group was commissioned by Redrow Homes (Scotland) Ltd to undertake an archaeological evaluation in advance of proposed development of land at Whitehirst Park Road, Kilwinning, North Ayrshire. The work required is in response to a scope of archaeological works determined by North Ayrshire Council (ref: ML/07/00008/m100008a).
- 1.2 North Ayrshire Council is advised on archaeological matters by the West of Scotland Archaeology Service. A programme of works that fully satisfies and meets the requirements of the council, as advised by WoSAS was required. The work required is in accordance with NPPG 5 (SOEnd 1994) and PAN 42 (SOEnd 1994a), in order to determine the nature, extent, condition, date and significance of any archaeological remains within the proposed development area.

## 1.2 Location

- 1.2.1 The proposed development site totals 3.7 ha and is located on the north-western edge of a recently developed portion of the town of Kilwinning, North Ayrshire, (centred on NGR: NS 2888 4385). It is bounded by Whitehirst Park Road to the south-east, field boundaries to the south-west and west, and an unnamed farm road to the north (see Figure 1). In general the site slopes from south-west to north-east, with a defined hillock in the south-west corner and pronounced undulations across the rest of the site.
- 1.2.2 The geology of the area consists primarily of Carboniferous sandstones, shales, grits and limestones. The overlying soils are primarily of the Ashgrove Associations, being soils developed on drifts from shales and sandstones of a Carboniferous age. These are mainly shale derived and are manifested primarily in clayey tills or, where rock is close to the surface, stony clay loams (Bown et al 1982).

## 1.3 Archaeological background

- 1.3.1 A desk-based assessment (Oleksy 2007a) was undertaken prior to the evaluation. Cartographic sources indicate that the proposed development area has been undeveloped for the past 200 years. Finds of a prehistoric nature have been recovered in the vicinity of the proposed development site. A barbed and tanged flint arrowhead was discovered in the back garden of a house to the south-east of the proposed development site and a cist, most likely dating to the Bronze Age, was discovered at Woodside to the east, which is said to have had multi-slab sides and other irregularities (Oleksy 2007a). Therefore there was clearly the potential of encountering features dating to the prehistoric period during ground breaking works associated with the proposed development.
- 1.3.2 In addition, aerial photographs dating from 1946 to 1988 were examined to determine whether any cropmark sites were located within the proposed development area or its immediate vicinity. The 1965 aerial photograph revealed a possible rectilinear enclosure and possible circular feature located in fields to the south-west of the site. These do not appear on any other aerial photographs of the area (Oleksy 2007a).

## 2. OBJECTIVES

2.1 The objectives of the archaeological evaluation were:

- i) to determine and assess the character, extent, condition, quality, date and significance of any buried archaeological remains within the proposed development area;
- ii) to advise and implement an appropriate form of mitigation, such as excavation, post-excavation analyses and publication, given the infeasibility of preserving the archaeological material *in situ*, should significant archaeological remains be encountered.

## 3 METHODOLOGY

3.1 The trial trenching was designed to establish the extent, condition, character, quality, significance and date of any archaeological features present. The trenches were of varying lengths and set on varying orientations, the locations of the trenches partly differ from those shown in the Written Scheme of Investigation (Oleksy 2007a) due to the difficult topography of the site (Figure 1).

3.2 Stripping of the overburden was by means of a 360° tracked excavator equipped with a toothless ditching bucket approximately 2.00 m wide. Excavation was undertaken in shallow units/spits until the first significant archaeological horizon or natural subsoil was reached. All machine excavation was supervised by an experienced field archaeologist.

3.3 All trial trenching was undertaken according to AOC Archaeology Group's standard operating procedures. Stratigraphy was recorded in all trenches even where no deposits of archaeological significance were discovered. The trenches were backfilled on completion of excavation.

## 4 RESULTS

4.1 The archaeological evaluation was undertaken between 12<sup>th</sup> and 16<sup>th</sup> May 2008. Twenty-eight trenches, each approximately 2.00 m wide were machine excavated (Figure 1). Overall the trenches had a combined basal area of 2960 m<sup>2</sup>. Weather conditions were such that good archaeological visibility was present throughout the entire evaluation. The following should be read in conjunction with the data presented in Appendices 1-3 and Figure 1.

4.2 The excavation of all the trenches revealed topsoil comprising soft dark brown clay silt with occasional small sub-rounded and sub-angular stones. Moderate numbers of sherds of modern white ceramic and modern glass were observed scattered throughout the topsoil in all of the trenches. Underlying the topsoil, natural subsoil consisted of friable light to mid orange brown clay with occasional patches of soft sandstone bedrock and occasional large patches of firm grey clay, with moderate small sub-rounded and sub-angular stones and occasional larger sub-rounded boulders. The clay nature of the subsoil no doubt accounting for the large numbers of field drains encountered across the whole of the site.

- 4.3 Two of the trenches (Trench 2 and 4) revealed a mixed layer of soft mid orange brown clayey sandy silt between the topsoil and underlying natural subsoil.
- 4.4 In Trench 2 large linear features were observed running south-west to north-east at the eastern end of the trench. The trench was expanded in an attempt to ascertain the extent of the features but this proved impossible, as they appear to run right up to the hedge boundary between field and road. Five of these features were unearthed, each approximately 1.5 m wide, with an approximate length of 11 m observed; a small slot excavated through one of the features revealed a depth of 0.44 m. The edges of the features were very distinct and regular, approximately 0.10 - 0.15 m of clean natural subsoil was observed between the features, and the test slot showed the edges of the cut to be very steep, almost vertical, with an almost flat but slightly irregular base, they appear very similar to the scrapes left by machine buckets. The features were filled with black ash and cinder material with fragments of modern brick and very occasional fragments of modern ceramic and glass. A local farmer stated that this area was previously used as a dumping ground for ash, which was transported from Glasgow by train to Kilwinning and then used by the surrounding local farmers as fertiliser for their fields. This area of the field was the local dump from where the material was gathered and taken out to other fields and the features observed in Trench 2 are the remains of this previous function.



Plate 1: Linear features in Trench 2 from west



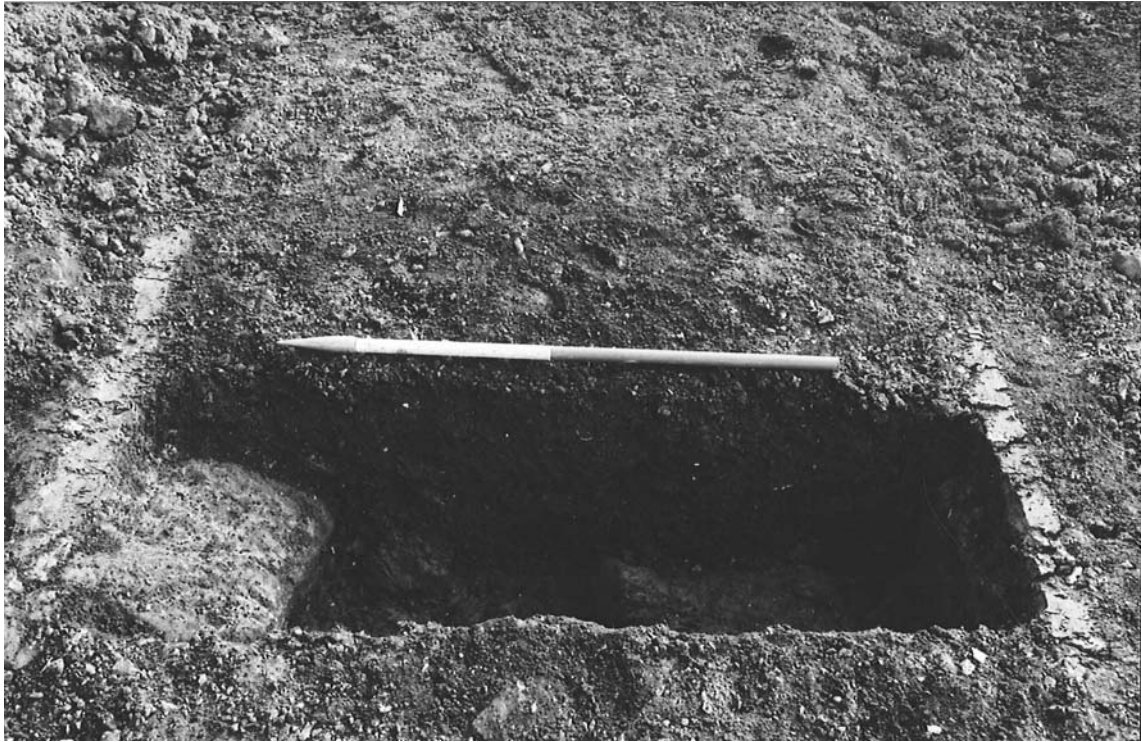


Plate 2: West facing section through linear feature in Trench 2

- 4.5 A stone-built drain was observed running roughly east to west at 34.7 m from the western end of Trench 9. The drain was a maximum of 0.50 m wide, with an inner width of 0.25 m and a maximum depth of 0.15 m. The drain was visible for a length of around 5.0 m before it continued out of the trench and although the capstones at the western end had been lost, those further east remained. The drain was constructed from blocks of sandstone of varying size, some of which appeared to have been roughly worked into shape. Two of the capstones at the east had evidently been re-used and had originally been one very large stone before being broken in two. These stones had small shallow square notches/depressions carved into the top and also a circle approximately 0.48 m in diameter carved into the upper surface with approximately a third of the circle on one stone and the remaining two thirds on the other stone. The drain was completely silted up with mid orange brown clay silt and had evidently not been in use for some time.

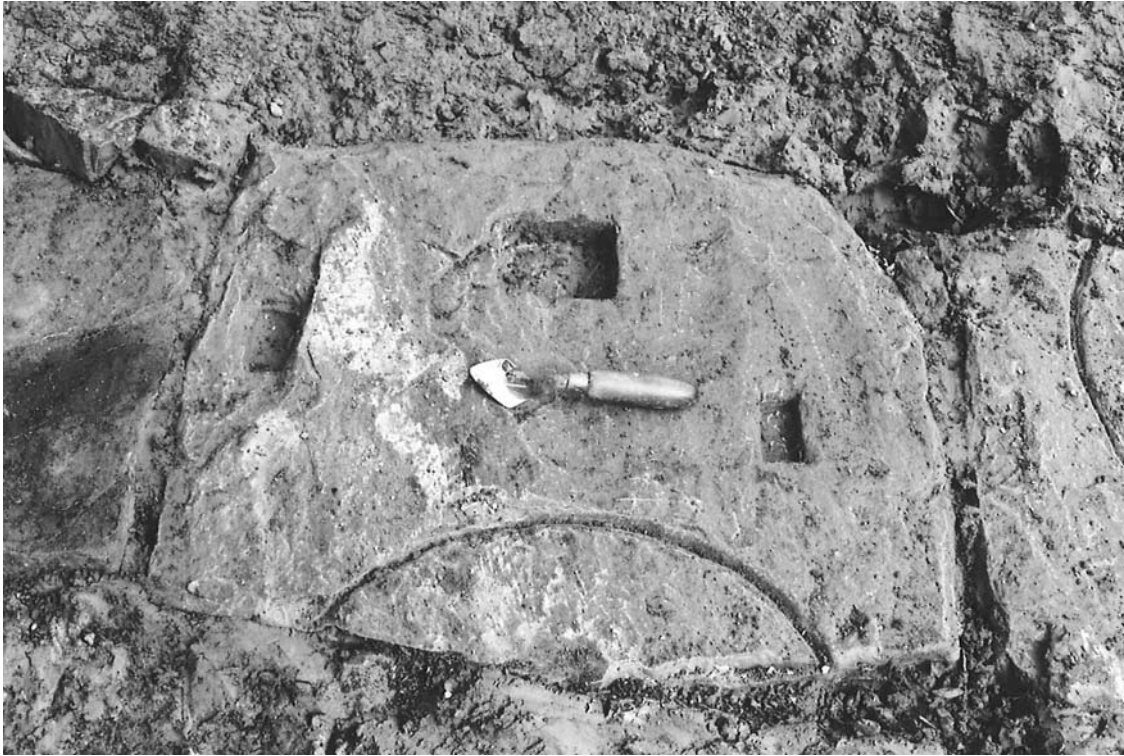


Plate 3: Carving on capstone of drain in Trench 9



Plate 4: Carving on capstone of drain in Trench 9

- 4.6 In all of the trenches numerous ceramic and rubble field drains were observed cutting the natural subsoil on various alignments. The vast majority of the field drains were ceramic and aligned north-west to south-east.

- 4.7 Other than the relatively recent ash dump in Trench 2, the stone drain in Trench 9 and the ubiquitous field drains, no features were encountered within the proposed development area. Similarly, no significant artefactual material was unearthed.

## **5 CONCLUSION**

- 5.1 No features or artefacts of archaeological significance were identified. No further works are recommended.

## 6 BIBLIOGRAPHIC REFERENCES

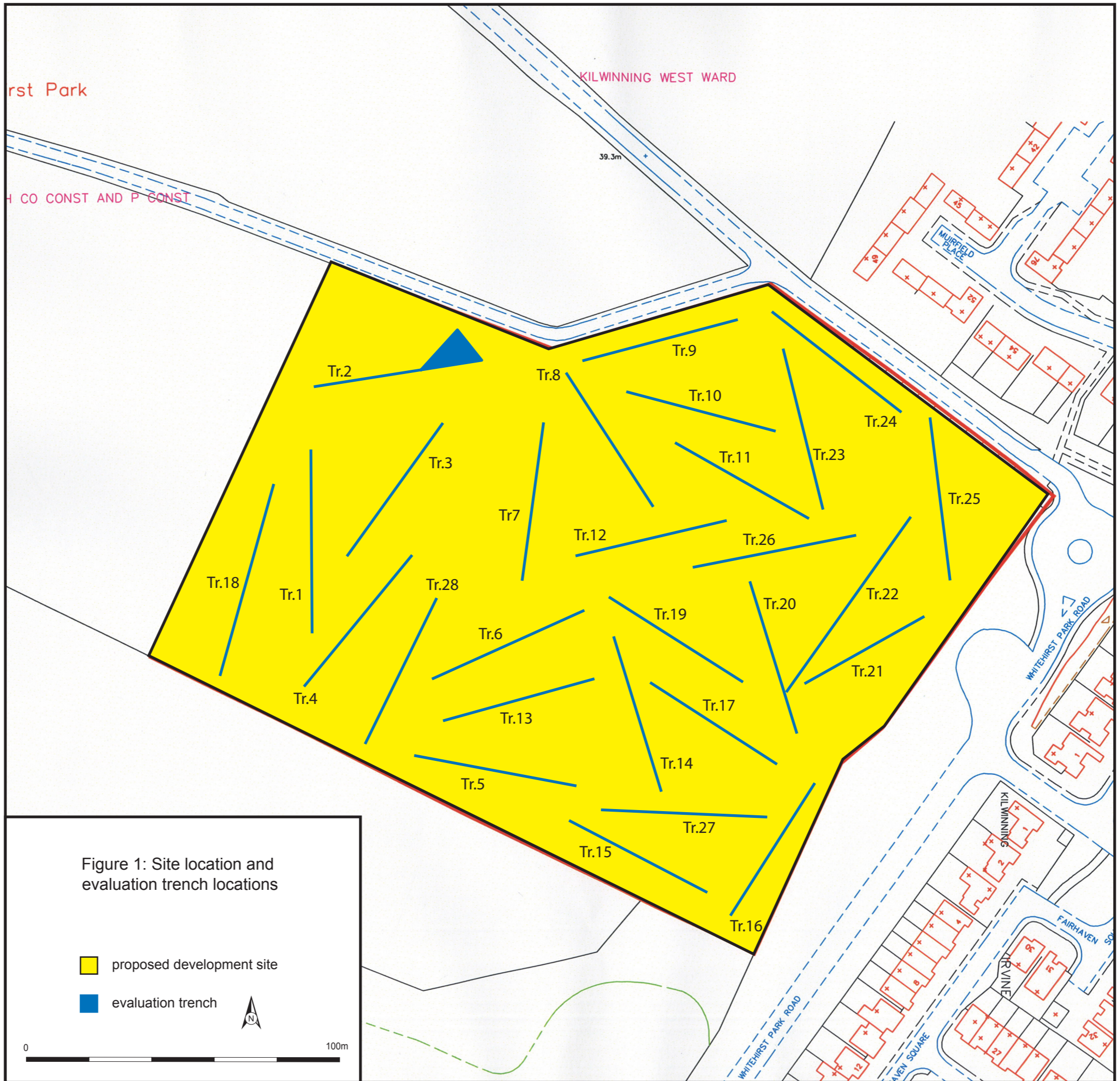
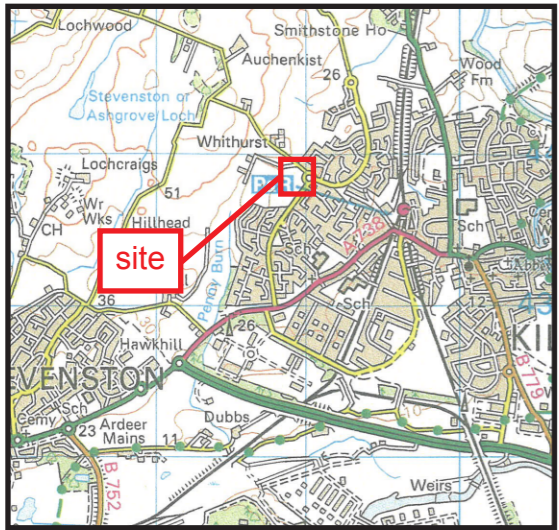
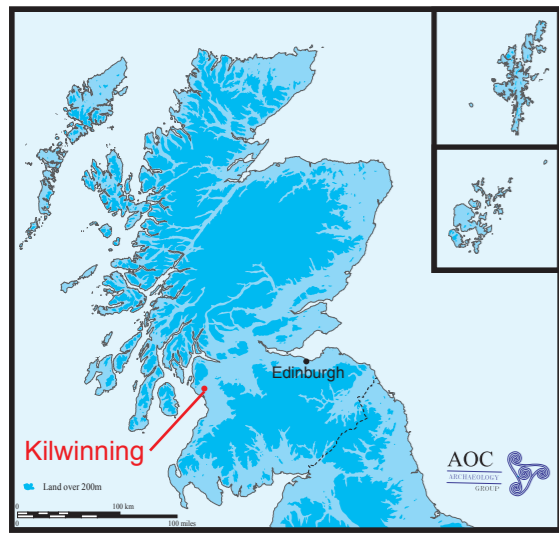
Bown, CJ et al 1982 *South-West Scotland: Soil Survey of Scotland*. Aberdeen

Oleksy 2007 *Whitehirst Park Road, Kilwinning: Written Scheme of Investigation*. Unpubl AOC Archive Document

Oleksy 2007a *Whitehirst Park Road, Kilwinning: Archaeological Desk-Based Assessment*. Unpubl AOC Archive Document.

SOEnd 1994 *National Planning Policy Guideline 5: Archaeology and Planning*. The Scottish Office Environment Department.

SOEnd 1994a *Planning Advice Note 42. Archaeology – The Planning Process and Scheduled Ancient Monument Procedures*. The Scottish Office Environment Department.



---

**Whitehirst Park Road, Kilwinning Evaluation:  
Data Structure Report**

**Section 2: Appendices**

## APPENDIX 1

### Trench Descriptions

#### Trench 1

<i>Dimensions</i>	50 m by 2 m
<i>Total Area</i>	100 m <sup>2</sup>
<i>Orientation</i>	N/S
<i>Depth of Topsoil</i>	0.30-0.40 m (0.65 m at S end)
<i>Depth of Excavation</i>	0.30-0.65 m
<i>Significant Features</i>	One rubble field drain at 35 m and four ceramic field drains observed at 4 m, 14 m, 26 m and 32 m from south end.
<i>Subsoil</i>	Friable mid orange brown clay with occasional small rounded and sub-angular stones and very occasional larger stones.
<i>Finds</i>	Moderate fragments of modern white ceramic through topsoil.

#### Trench 2

<i>Dimensions</i>	50 m by 2 m (with extension of 11 m by 12.5 m at east end)
<i>Total Area</i>	237.5 m <sup>2</sup>
<i>Orientation</i>	E/W
<i>Depth of Topsoil</i>	0.35-0.45 m
<i>Depth of Excavation</i>	0.35-0.80 m
<i>Significant Features</i>	Large linear black ash and cinder filled features at east end of trench. Trench extended but full extent not established. 0.10 m narrow strips of natural between each of the five features visible. Modern brick and very occasional fragments of modern ceramic in fill. Features present: 1.5 m wide, 0.44 m deep with a 11.00 m length visible. Very steep almost vertical edges with relatively flat base. Appear similar to machine bucket scrapes. Rubble field drain observed at 34 m from west end. Soft mid orange brown clayey sandy silt B-horizon observed from 23.40 – 50.00 m, approximately 0.30-0.35 m thick.
<i>Subsoil</i>	Friable mid orange brown clay with occasional small rounded and sub-angular stones and very occasional larger stones. Soft sandstone bedrock observed between 13 m and 23.40 m.
<i>Finds</i>	Moderate fragments of modern white ceramic and modern glass through topsoil, brick fragments in ash fill of features.

#### Trench 3

<i>Dimensions</i>	50 m by 2 m
<i>Total Area</i>	100 m <sup>2</sup>
<i>Orientation</i>	SW/NE
<i>Depth of Topsoil</i>	0.35-0.50 m
<i>Depth of Excavation</i>	0.35-0.50 m
<i>Significant Features</i>	Ceramic field drain observed at 0 m, rubble field drains observed at 9.5 m, 19.4 m and 29.0 m from the south-west end of the trench.
<i>Subsoil</i>	Friable mid orange brown clay with occasional small rounded and sub-angular stones and very occasional larger stones.
<i>Finds</i>	Moderate fragments of modern white ceramic and modern glass throughout topsoil.

**Trench 4**

<i>Dimensions</i>	50 m by 2 m
<i>Total Area</i>	100 m <sup>2</sup>
<i>Orientation</i>	N/S
<i>Depth of Topsoil</i>	0.35-0.40 m
<i>Depth of Excavation</i>	0.35-0.80 m
<i>Significant Features</i>	At 39.0-50.0 m from south end of trench a 0.40 m thick layer of soft mid orange brown clayey sandy silt b-horizon was observed. Two ceramic drains were visible at 16.2 m and 39.0 m from south end.
<i>Subsoil</i>	Friable mid orange brown clay with occasional small rounded and sub-angular stones and very occasional larger stones.
<i>Finds</i>	Moderate fragments of modern white ceramic throughout topsoil.

**Trench 5**

<i>Dimensions</i>	50 m by 2 m
<i>Total Area</i>	100 m <sup>2</sup>
<i>Orientation</i>	E/W
<i>Depth of Topsoil</i>	0.28-0.35 m
<i>Depth of Excavation</i>	0.28-0.35 m
<i>Significant Features</i>	Ceramic field drains observed at 0.60 m, 5.70 m, 28.95 m and 38.45 m from west end.
<i>Subsoil</i>	Friable mid orange brown clay with occasional small rounded and sub-angular stones and very occasional larger stones.
<i>Finds</i>	Moderate fragments of modern white ceramic through topsoil.

**Trench 6**

<i>Dimensions</i>	50 m by 2 m
<i>Total Area</i>	100 m <sup>2</sup>
<i>Orientation</i>	SW/NE
<i>Depth of Topsoil</i>	0.38-0.40 m
<i>Depth of Excavation</i>	0.38-0.40 m
<i>Significant Features</i>	Ceramic field drains observed at 7.40 m, 15.55 m, 19.25 m, 37.60 m and 39.25 m from south-west end.
<i>Subsoil</i>	Friable mid orange brown clay with occasional small rounded and sub-angular stones and very occasional larger stones.
<i>Finds</i>	Moderate fragments of modern white ceramic and modern glass throughout topsoil.

**Trench 7**

<i>Dimensions</i>	50 m by 2 m
<i>Total Area</i>	100 m <sup>2</sup>
<i>Orientation</i>	N/S
<i>Depth of Topsoil</i>	0.42-0.50 m
<i>Depth of Excavation</i>	0.42-0.50 m
<i>Significant Features</i>	Ceramic field drains observed at 11.40 m, 17.90 m, 25.20 m, 30.85 m, 36.90 m and 43.65 m from east end.
<i>Subsoil</i>	Friable mid orange brown clay with occasional small rounded and sub-angular stones and very occasional larger stones.
<i>Finds</i>	Occasional fragments of modern white ceramic throughout topsoil.



**Trench 8**

<i>Dimensions</i>	50 m by 2 m
<i>Total Area</i>	100 m <sup>2</sup>
<i>Orientation</i>	NW/SE
<i>Depth of Topsoil</i>	0.30-0.47 m
<i>Depth of Excavation</i>	0.30-0.47 m
<i>Significant Features</i>	Two ceramic field drains observed at 7.30 m and 40.95 m from north-west end of trench.
<i>Subsoil</i>	Friable mid orange brown clay with occasional small rounded and sub-angular stones and very occasional larger stones.
<i>Finds</i>	Occasional fragments of modern white ceramic through topsoil.

**Trench 9**

<i>Dimensions</i>	50 m by 2 m
<i>Total Area</i>	100 m <sup>2</sup>
<i>Orientation</i>	ENE/WSW
<i>Depth of Topsoil</i>	0.32-0.36 m
<i>Depth of Excavation</i>	0.32-0.36 m
<i>Significant Features</i>	Stone built drain at 34.70 m from west end, visible for approx. 5.0 m. Max. outer width = 0.50 m, interior width = 0.25 m, max. interior depth = 0.15 m. Sandstone capstones at east end, two capstones show evidence of re-use with square notches and a circle (0.48 m diameter) carved in the upper surface – obviously originally one stone broken in half at some point. Ceramic drains at 0.75 m, 26.85 m and 47.5 m from west end.
<i>Subsoil</i>	Friable mid orange brown clay with occasional small rounded and sub-angular stones and very occasional larger stones.
<i>Finds</i>	Moderate fragments of modern white ceramic through topsoil.

**Trench 10**

<i>Dimensions</i>	50 m by 2 m
<i>Total Area</i>	100 m <sup>2</sup>
<i>Orientation</i>	WNW/ESE
<i>Depth of Topsoil</i>	0.27-0.30 m
<i>Depth of Excavation</i>	0.27-0.30 m
<i>Significant Features</i>	Ceramic field drains observed at 9.0 m, 18.60 m and 43.05 m from north-west end of trench.
<i>Subsoil</i>	Friable mid orange brown clay with occasional small rounded and sub-angular stones and very occasional larger stones.
<i>Finds</i>	Moderate fragments of modern white ceramic and modern glass throughout topsoil.

**Trench 11**

<i>Dimensions</i>	50 m by 2 m
<i>Total Area</i>	100 m <sup>2</sup>
<i>Orientation</i>	NW/SE
<i>Depth of Topsoil</i>	0.40-0.42 m
<i>Depth of Excavation</i>	0.40-0.42 m

<i>Significant Features</i>	Ceramic field drains observed at 0-23 m, 23.10 m, 47.55 m and 45-50 m from the north-west end of the trench.
<i>Subsoil</i>	Friable mid orange brown clay with occasional small rounded and sub-angular stones and very occasional larger stones.
<i>Finds</i>	Moderate fragments of modern white ceramic and occasional modern glass throughout topsoil.

### **Trench 12**

<i>Dimensions</i>	50 m by 2 m
<i>Total Area</i>	100 m <sup>2</sup>
<i>Orientation</i>	SW/NE
<i>Depth of Topsoil</i>	0.33-0.40 m
<i>Depth of Excavation</i>	0.33-0.40 m
<i>Significant Features</i>	Ceramic field drains observed at 4.30 m, 21.10 m, 25.95 m, 38.85 m and 43.0 m from south-west end of trench.
<i>Subsoil</i>	Friable mid orange brown clay with occasional small rounded and sub-angular stones and very occasional larger stones; from 4.30-34.0 m subsoil changes to dark grey firm clay with frequent stones.
<i>Finds</i>	Moderate fragments of modern white ceramic throughout topsoil.

### **Trench 13**

<i>Dimensions</i>	50 m by 2 m
<i>Total Area</i>	100 m <sup>2</sup>
<i>Orientation</i>	SW/NE
<i>Depth of Topsoil</i>	0.37-0.38 m
<i>Depth of Excavation</i>	0.37-0.38 m
<i>Significant Features</i>	Ceramic field drains observed at 8.20 m, 15.40 m, 22.45 m and 30.0 m from south-west end of trench.
<i>Subsoil</i>	Friable mid orange brown clay with occasional small rounded and sub-angular stones and very occasional larger stones.
<i>Finds</i>	Moderate fragments of modern white ceramic throughout topsoil.

### **Trench 14**

<i>Dimensions</i>	50 m by 2 m
<i>Total Area</i>	100 m <sup>2</sup>
<i>Orientation</i>	NE/SW
<i>Depth of Topsoil</i>	0.27-0.29 m
<i>Depth of Excavation</i>	0.27-0.29 m
<i>Significant Features</i>	Ceramic field drains observed at 2.30 m, 10.20 m, 18.40 m, 26.0 m and 41.40 m from north end of trench.
<i>Subsoil</i>	Friable mid orange brown clay with occasional small rounded and sub-angular stones and very occasional larger stones. Soft sandstone bedrock observed from 6.60-11.70 m.
<i>Finds</i>	Moderate fragments of modern white ceramic throughout topsoil.

### **Trench 15**

<i>Dimensions</i>	50 m by 2 m
<i>Total Area</i>	100 m <sup>2</sup>

<i>Orientation</i>	WNW/ESE
<i>Depth of Topsoil</i>	0.34-0.35 m
<i>Depth of Excavation</i>	0.34-0.35 m
<i>Significant Features</i>	Ceramic field drain observed between 0 m and 50 m from WNW end of trench.
<i>Subsoil</i>	Friable mid orange brown clay with occasional small rounded and sub-angular stones and very occasional larger stones.
<i>Finds</i>	Moderate fragments of modern white ceramic and modern glass throughout topsoil.

**Trench 16**

<i>Dimensions</i>	50 m by 2 m
<i>Total Area</i>	100 m <sup>2</sup>
<i>Orientation</i>	SW/NE
<i>Depth of Topsoil</i>	0.29-0.32 m
<i>Depth of Excavation</i>	0.29-0.32 m
<i>Significant Features</i>	Ceramic field drains observed at 4.20 m, 9.40 m, 14.60 m, 27.0 m, 30.0 m and 32.0 m from south-west end of trench.
<i>Subsoil</i>	Friable mid orange brown clay with occasional small rounded and sub-angular stones and very occasional larger stones.
<i>Finds</i>	Moderate fragments of modern white ceramic throughout topsoil.

**Trench 17**

<i>Dimensions</i>	50 m by 2 m
<i>Total Area</i>	100 m <sup>2</sup>
<i>Orientation</i>	WNW/ESE
<i>Depth of Topsoil</i>	0.36 m
<i>Depth of Excavation</i>	0.36 m
<i>Significant Features</i>	One ceramic field drain observed from 0-8.45 m from west-south-west end of trench.
<i>Subsoil</i>	Friable mid orange brown clay with occasional small rounded and sub-angular stones and very occasional larger stones. Soft sandstone bedrock visible from 10 - 43 m.
<i>Finds</i>	Moderate fragments of modern white ceramic and occasional modern glass throughout topsoil.

**Trench 18**

<i>Dimensions</i>	62 m by 2 m
<i>Total Area</i>	124 m <sup>2</sup>
<i>Orientation</i>	N/S
<i>Depth of Topsoil</i>	0.25-0.29 m
<i>Depth of Excavation</i>	0.25-0.29 m
<i>Significant Features</i>	Ceramic field drain observed at 12.3 m from south end of trench.
<i>Subsoil</i>	Friable mid orange brown clay with occasional small rounded and sub-angular stones and very occasional larger stones. Soft sandstone bedrock visible from 21.20-23.0 m and then firm dark grey clay to 25.0 m. Bedrock again visible from 38.0-41.0 m and then grey clay to 55.0 m from south end.
<i>Finds</i>	Moderate fragments of modern white ceramic and occasional modern glass throughout topsoil.

**Trench 19**

<i>Dimensions</i>	50 m by 2 m
<i>Total Area</i>	100 m <sup>2</sup>
<i>Orientation</i>	NW/SE
<i>Depth of Topsoil</i>	0.30-0.45 m
<i>Depth of Excavation</i>	0.30-0.45 m
<i>Significant Features</i>	Ceramic drains observed at 8.0 m and 12.75 m from NW end of trench.
<i>Subsoil</i>	Friable mid orange brown clay with occasional small rounded and sub-angular stones and very occasional larger stones.
<i>Finds</i>	Moderate fragments of modern white ceramic throughout topsoil.

**Trench 20**

<i>Dimensions</i>	50 m by 2 m
<i>Total Area</i>	100 m <sup>2</sup>
<i>Orientation</i>	SE/NW
<i>Depth of Topsoil</i>	0.32-0.40 m
<i>Depth of Excavation</i>	0.32-0.40 m
<i>Significant Features</i>	One rubble field drain observed at 2.15 m and ceramic field drains observed at 12.70 m, 18.45 m, 25.40 m and 32.35 m from south-east end of trench.
<i>Subsoil</i>	Friable mid orange brown clay with occasional small rounded and sub-angular stones and very occasional larger stones.
<i>Finds</i>	Moderate fragments of modern white ceramic throughout topsoil.

**Trench 21**

<i>Dimensions</i>	42 m by 2 m
<i>Total Area</i>	100 m <sup>2</sup>
<i>Orientation</i>	SW/NE
<i>Depth of Topsoil</i>	0.32-0.34 m
<i>Depth of Excavation</i>	0.32-0.34 m
<i>Significant Features</i>	Ceramic field drains observed at 5.15 m, 10.25 m and 36.65 m from SW end of trench.
<i>Subsoil</i>	Friable mid orange brown clay with occasional small rounded and sub-angular stones and very occasional larger stones.
<i>Finds</i>	Moderate fragments of modern white ceramic throughout topsoil.

**Trench 22**

<i>Dimensions</i>	58 m by 2 m
<i>Total Area</i>	100 m <sup>2</sup>
<i>Orientation</i>	SW/NE
<i>Depth of Topsoil</i>	0.27-0.34 m
<i>Depth of Excavation</i>	0.27-0.34 m
<i>Significant Features</i>	Four ceramic field drains observed at 2.80 m, 20.10 m, 25.0 m and 29.85 m from SW end of trench.
<i>Subsoil</i>	Friable mid orange brown clay with occasional small rounded and sub-angular stones and very occasional larger stones.
<i>Finds</i>	Moderate fragments of modern white ceramic and occasional modern glass throughout topsoil.

**Trench 23**

<i>Dimensions</i>	50 m by 2 m
<i>Total Area</i>	100 m <sup>2</sup>
<i>Orientation</i>	NW/SE
<i>Depth of Topsoil</i>	0.34-0.36 m
<i>Depth of Excavation</i>	0.34-0.36 m
<i>Significant Features</i>	Ceramic field drains observed at 17.55 m, 42.0 m (two drains directly adjacent to one another) and 47.5 m from east end of trench.
<i>Subsoil</i>	Friable mid orange brown clay with occasional small rounded and sub-angular stones and very occasional larger stones.
<i>Finds</i>	Moderate fragments of modern white ceramic throughout topsoil.

**Trench 24**

<i>Dimensions</i>	50 m by 2 m
<i>Total Area</i>	100 m <sup>2</sup>
<i>Orientation</i>	NE/SW
<i>Depth of Topsoil</i>	0.28-0.34 m
<i>Depth of Excavation</i>	0.28-0.34 m
<i>Significant Features</i>	Ceramic field drains observed at 9.30 m and 32.8 m from north-east end of trench.
<i>Subsoil</i>	Friable mid orange brown clay with occasional small rounded and sub-angular stones and very occasional larger stones.
<i>Finds</i>	Moderate fragments of modern white ceramic throughout topsoil.

**Trench 25**

<i>Dimensions</i>	50 m by 2 m
<i>Total Area</i>	100 m <sup>2</sup>
<i>Orientation</i>	NNW/SSE
<i>Depth of Topsoil</i>	0.24-0.27 m
<i>Depth of Excavation</i>	0.24-0.27 m
<i>Significant Features</i>	Ceramic field drains observed at 18.6 m, 25.1 m, 36.35 m and 42.8 m from NNW end of trench.
<i>Subsoil</i>	Friable mid orange brown clay with occasional small rounded and sub-angular stones and very occasional larger stones.
<i>Finds</i>	Moderate fragments of modern white ceramic throughout topsoil.

**Trench 26**

<i>Dimensions</i>	50 m by 2 m
<i>Total Area</i>	100 m <sup>2</sup>
<i>Orientation</i>	WSW/ENE
<i>Depth of Topsoil</i>	0.25-0.26 m
<i>Depth of Excavation</i>	0.25-0.26 m
<i>Significant Features</i>	Ceramic field drains observed at 7.7 m, 26.5 m and 46.8 m from south end of trench.
<i>Subsoil</i>	Friable mid orange brown clay with occasional small rounded and sub-angular stones and very occasional larger stones.
<i>Finds</i>	Moderate fragments of modern white ceramic and occasional modern glass throughout topsoil.

**Trench 27**

<i>Dimensions</i>	50 m by 2 m
<i>Total Area</i>	100 m <sup>2</sup>
<i>Orientation</i>	E/W
<i>Depth of Topsoil</i>	0.27-0.31 m
<i>Depth of Excavation</i>	0.27-0.31 m
<i>Significant Features</i>	Ceramic field drains observed at 0 m, 5.5 m, 14.7 m, 18.05 m and 45.0 m from east end of trench.
<i>Subsoil</i>	Friable mid orange brown clay with occasional small rounded and sub-angular stones and very occasional larger stones.
<i>Finds</i>	Moderate fragments of modern white ceramic throughout topsoil.

**Trench 28**

<i>Dimensions</i>	50 m by 2 m
<i>Total Area</i>	100 m <sup>2</sup>
<i>Orientation</i>	SW/NE
<i>Depth of Topsoil</i>	0.37-0.39 m
<i>Depth of Excavation</i>	0.37-0.39 m
<i>Significant Features</i>	Ceramic field drains observed at 3.6 m, 8.25 m, 12.2 m, 16.2 m, 20.15 m and 24.5 m from south-west end of trench.
<i>Subsoil</i>	Friable mid orange brown clay with occasional small rounded and sub-angular stones and very occasional larger stones.
<i>Finds</i>	Moderate fragments of modern white ceramic throughout topsoil.

## APPENDIX 2

### Photographic Record

#### Black & White Print Film 1

Frame	Description	From
1-2	Registration shots	
3-4	General shot of Trench 1	N
5-6	General shot of Trench 3	SW
7-8	General shot of Trench 4	N
9-10	General shot of Trench 5	W
11-12	General shot of Trench 6	NE
13-14	General shot of Trench 7	N
15-16	General shot of Trench 8	SE
17-18	Stone drain in Trench 9	W
19-20	Stone drain in Trench 9	W
21-22	Close-up of re-used capstone	S
23-24	Close-up of re-used capstone	S
25-26	General shot of Trench 9	E
27-28	General shot of Trench 10	ESE
29-30	General shot of Trench 11	SE
31-32	General shot of Trench 12	NE
33-34	General shot of Trench 13	NE
35-36	General shot of Trench 14	S

#### Black & White Print Film 2

Frame	Description	From
1-2	Registration shots	
3-4	General shot of Trench 15	E
5-6	General shot of Trench 16	NE
7-8	General shot of Trench 17	ENE
9-10	General shot of black ash features in Trench 2	W
11-12	West-facing section of black ash feature in Trench 2	W
13-14	Post-excavation shot of slot through feature in Trench 2	SE
15-16	General shot of Trench 2	E
17-18	General shot of Trench 18	S
19-20	General shot of Trench 19	SE
21-22	General shot of Trench 20	SE
23-24	General shot of Trench 21	NE
25-26	General shot of Trench 22	NNE
27-28	General shot of Trench 25	SE
29-30	General shot of Trench 26	W
31-32	General shot of Trench 27	W
33-34	General shot of Trench 28	N

## Colour Slide Film 1

Frame	Description	From
1-2	Registration shots	
3-4	General shot of Trench 1	N
5-6	General shot of Trench 3	SW
7-8	General shot of Trench 4	N
9-10	General shot of Trench 5	W
11-12	General shot of Trench 6	NE
13-14	General shot of Trench 7	N
15-16	General shot of Trench 8	SE
17-18	Stone drain in Trench 9	W
19-20	Stone drain in Trench 9	W
21-22	Close-up of re-used capstone	S
23-24	Close-up of re-used capstone	S
25-26	General shot of Trench 9	E
27-28	General shot of Trench 10	ESE
29-30	General shot of Trench 11	SE
31-32	General shot of Trench 12	NE
33-34	General shot of Trench 13	NE
35-36	General shot of Trench 14	S

## Colour Slide Film 2

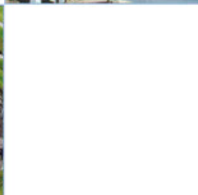
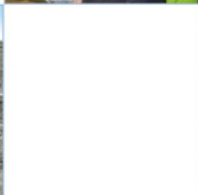
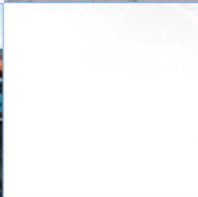
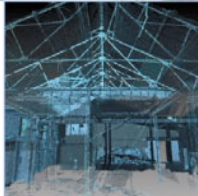
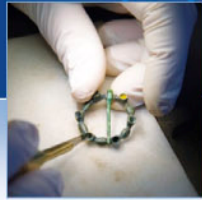
Frame	Description	From
1-2	Registration shots	
3-4	General shot of Trench 15	E
5-6	General shot of Trench 16	NE
7-8	General shot of Trench 17	ENE
9-10	General shot of black ash features in Trench 2	W
11-12	West-facing section of black ash feature in Trench 2	W
13-14	Post-excavation shot of slot through feature in Trench 2	SE
15-16	General shot of Trench 2	E
17-18	General shot of Trench 18	S
19-20	General shot of Trench 19	SE
21-22	General shot of Trench 20	SE
23-24	General shot of Trench 21	NE
25-26	General shot of Trench 22	NNE
27-28	General shot of Trench 25	SE
29-30	General shot of Trench 26	W
31-32	General shot of Trench 27	W
33-34	General shot of Trench 28	N



## APPENDIX 3

### Discovery and Excavation in Scotland Report

<b>LOCAL AUTHORITY:</b>	North Ayrshire Council
<b>PROJECT TITLE/SITE NAME</b>	Whitehirst Park Road, Kilwinning Evaluation
<b>PROJECT CODE:</b>	AOC 20652
<b>PARISH:</b>	Kilwinning
<b>NAME OF CONTRIBUTOR:</b>	Victoria Clements
<b>NAME OF ORGANISATION:</b>	AOC Archaeology Group
<b>TYPE(S) OF PROJECT:</b>	Archaeological Evaluation
<b>NMRS NO(S)</b>	N/A
<b>SITE/MONUMENT TYPE(S):</b>	N/A
<b>SIGNIFICANT FINDS:</b>	None
<b>NGR (2 letters, 6 figures)</b>	NS 288 438
<b>START DATE (this season)</b>	12 <sup>th</sup> May 2008
<b>END DATE (this season)</b>	16 <sup>th</sup> May 2008
<b>PREVIOUS WORK (incl. DES ref.)</b>	N/A
<b>MAIN (NARRATIVE) DESCRIPTION:</b> (May include information from other fields)	An archaeological evaluation was carried out in advance of proposed residential development at Whitehirst Park Road, Kilwinning, North Ayrshire. Twenty-eight trenches with a combined basal area of 2960 m <sup>2</sup> were opened. No features or artefacts of archaeological significance were identified.
<b>PROPOSED FUTURE WORK:</b>	None
<b>CAPTION(S) FOR ILLUSTRS:</b>	---
<b>SPONSOR OR FUNDING BODY:</b>	Redrow Homes (Scotland) Ltd
<b>ADDRESS OF MAIN CONTRIBUTOR:</b>	Edgefield Road Industrial Estate, Loanhead, Midlothian, EH20 9SY
<b>EMAIL ADDRESS:</b>	<a href="mailto:admin@aocscot.co.uk">admin@aocscot.co.uk</a>
<b>ARCHIVE LOCATION (intended/deposited)</b>	Archive to be deposited in NMRS



**AOC Archaeology Group**, Edgefield Industrial Estate, Edgefield Road, Loanhead EH20 9SY  
tel: 0131 440 3593 | fax: 0131 440 3422 | e-mail: [admin@aocarchaeology.com](mailto:admin@aocarchaeology.com)

[www.aocarchaeology.com](http://www.aocarchaeology.com)