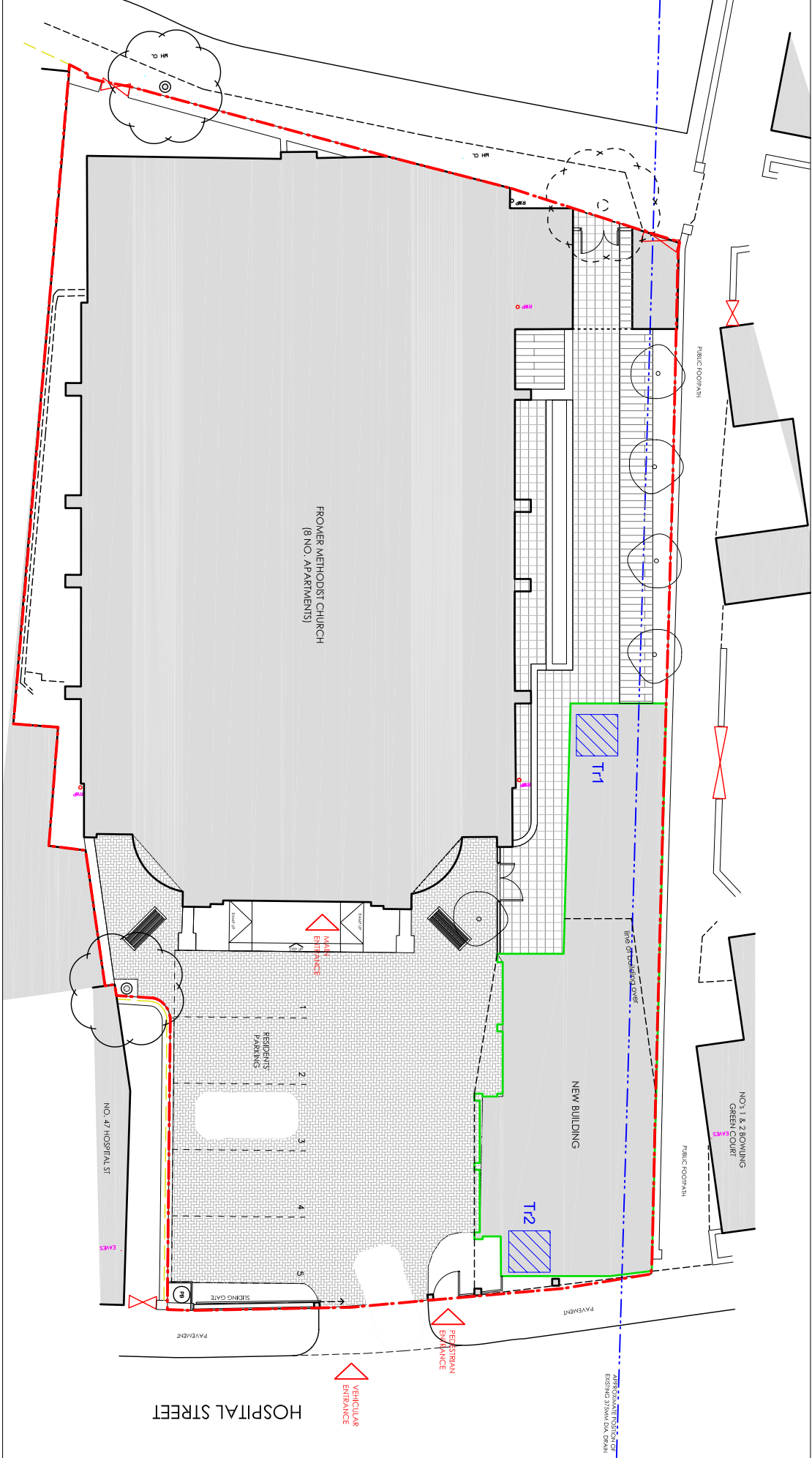


METHODIST CHAPEL, NANTWICH, CHESHIRE: AN ARCHAEOLOGICAL EVALUATION REPORT



Based on the Plans Produced by Oliver Smurthwaite Architects

Site Outline

New Building Outline

Evaluation Pits

Figure 2: Detailed Site / Evaluation Pit Location Plan

© AOC ARCHAEOLOGY GROUP - JANUARY 2009