

FORMER LADYWELL ROAD POLICE STATION, LONDON BOROUGH OF LEWISHAM:  
A HISTORIC BUILDING RECORD

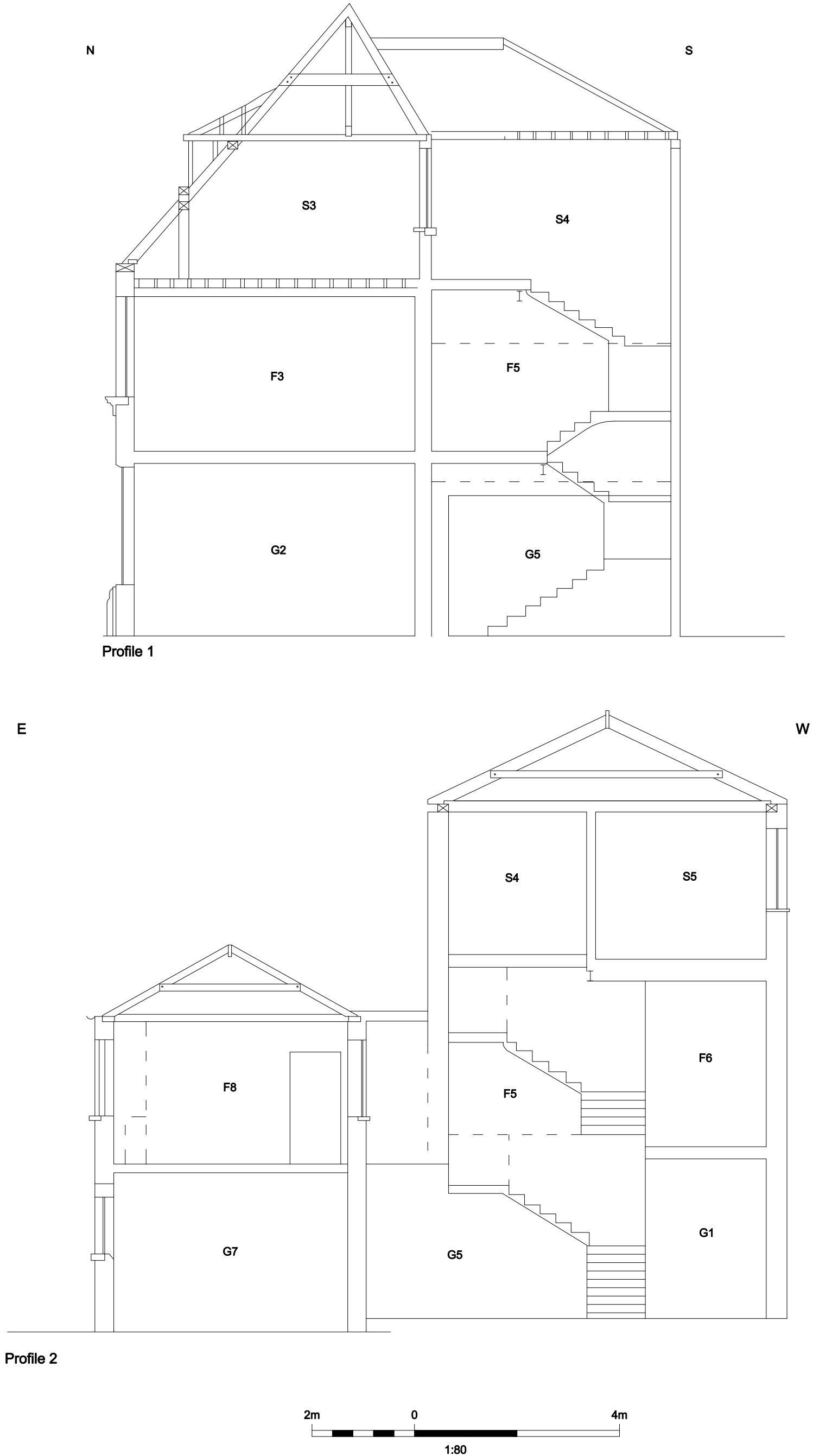
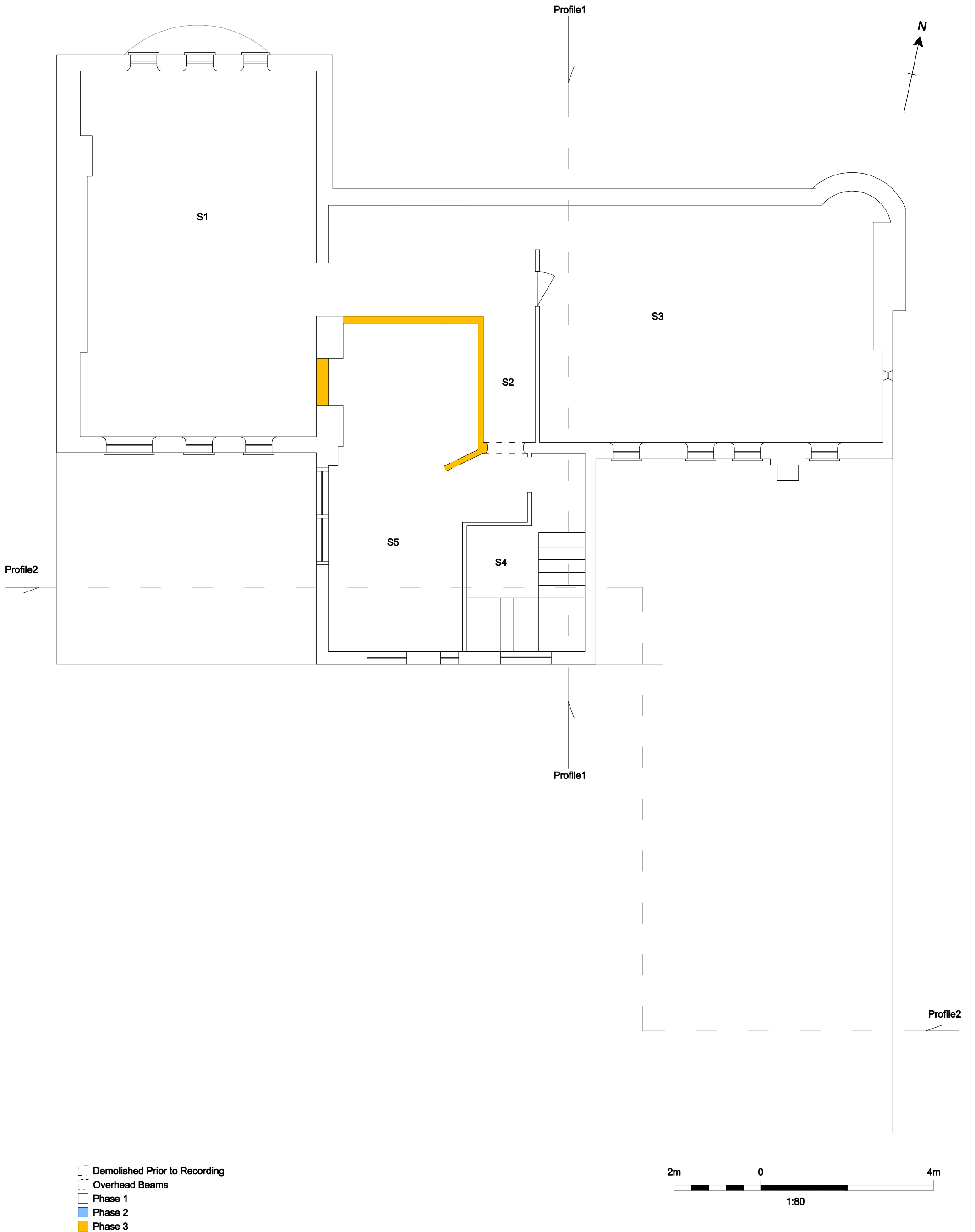
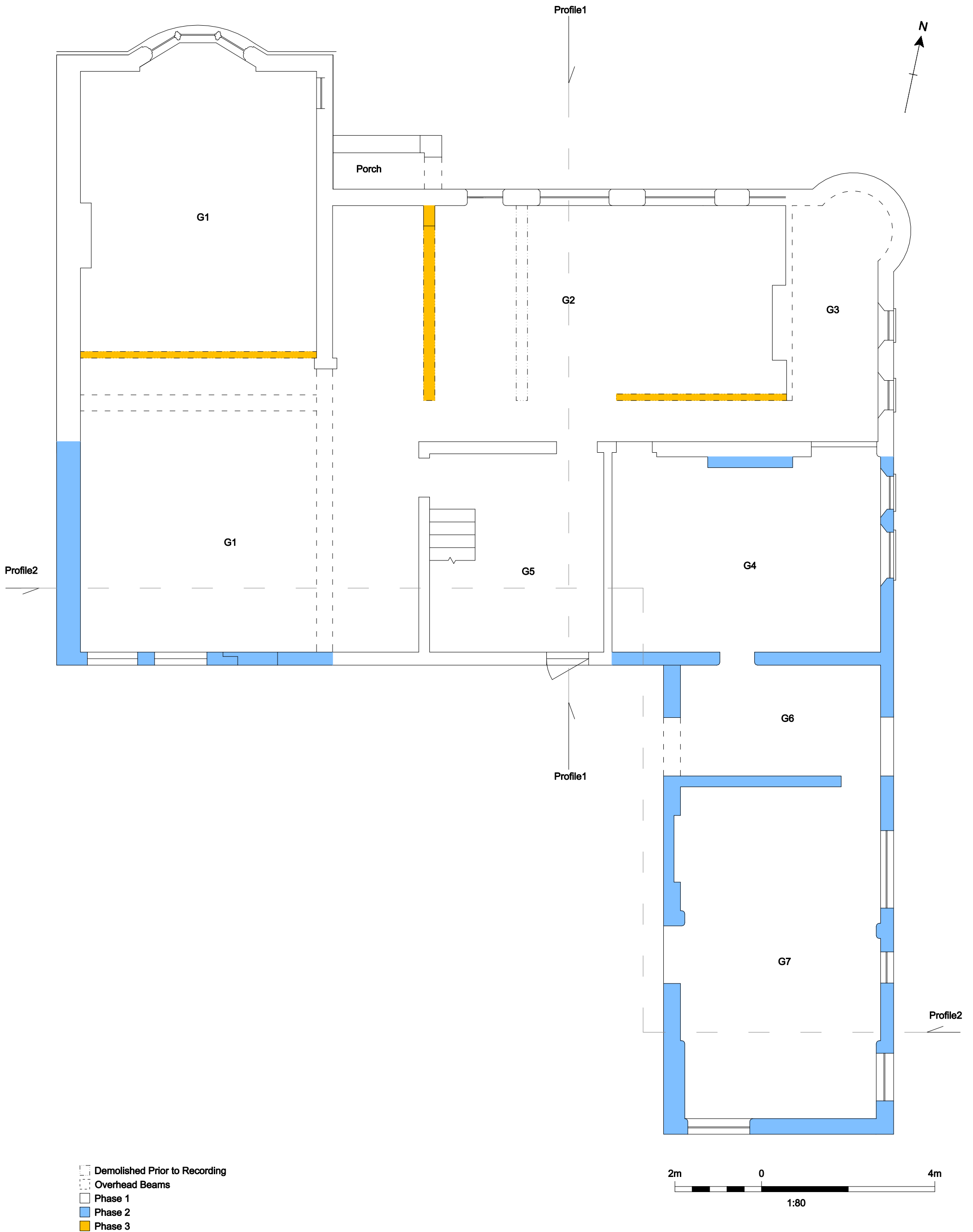


Figure 6: Police Station: Building Profiles

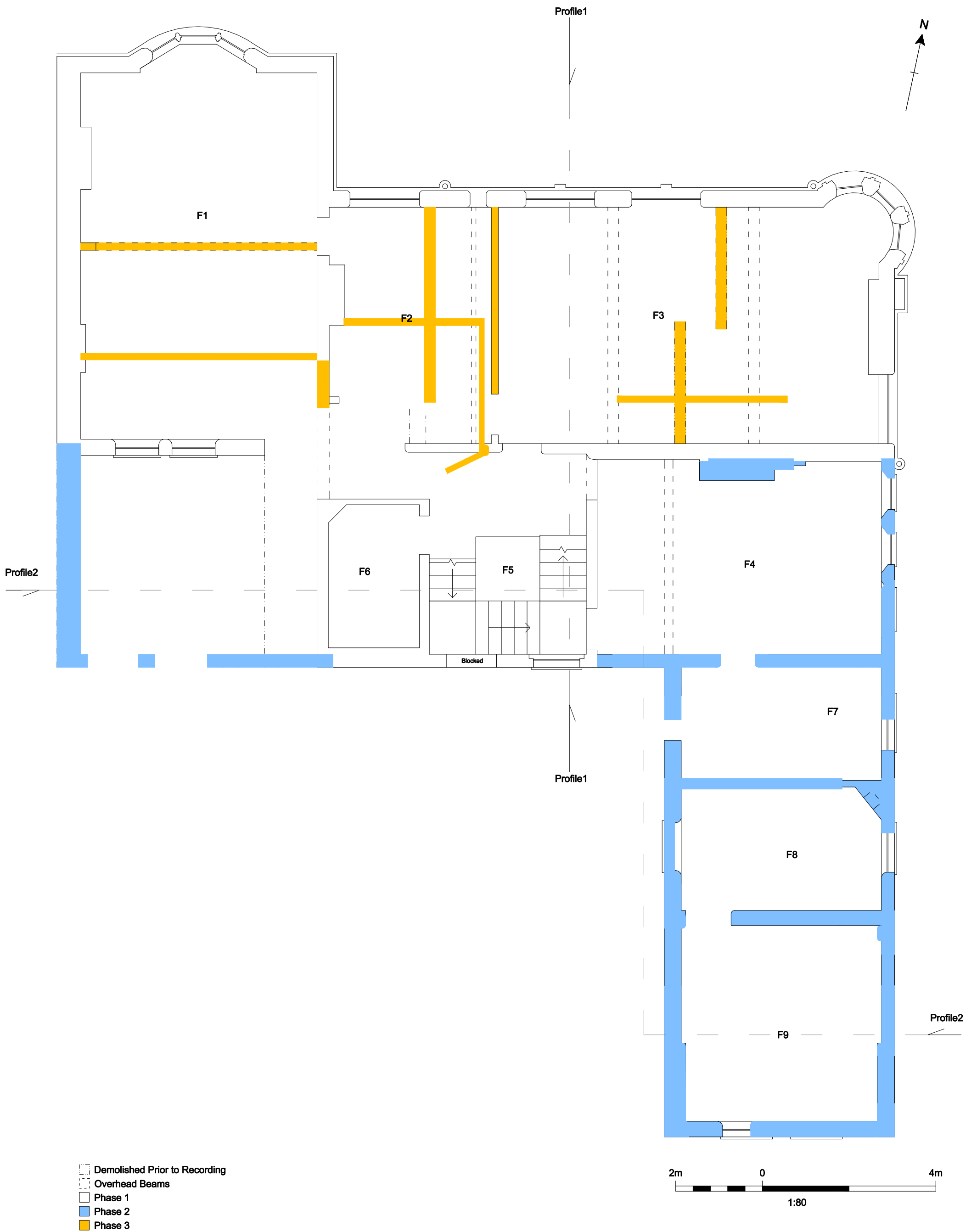


**Figure 5:** Police Station: Second Floor Plan



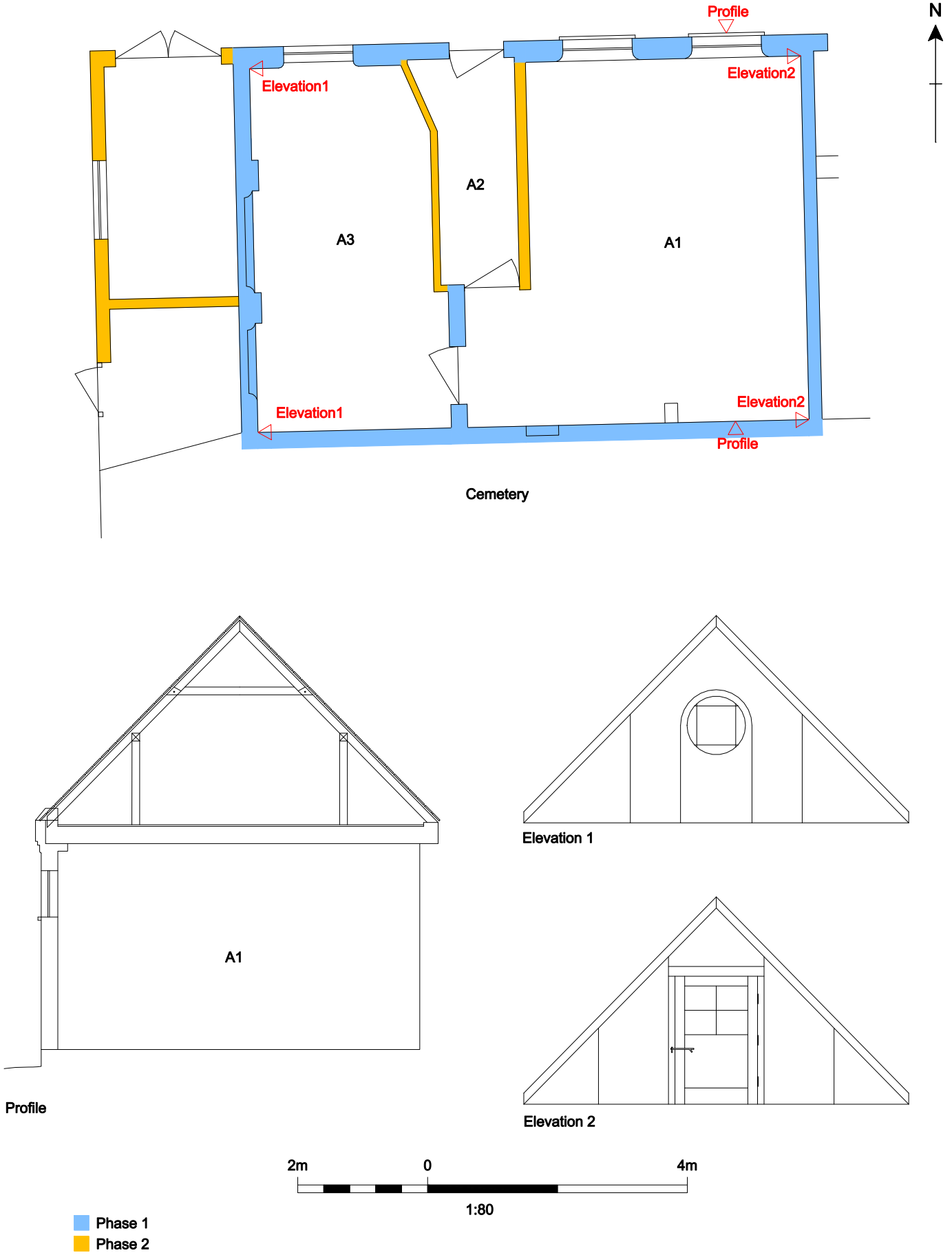
- Demolished Prior to Recording
- Overhead Beams
- Phase 1
- Phase 2
- Phase 3

**Figure 3:** Police Station: Ground Floor Plan



**Figure 4:** Police Station: First Floor Plan

FORMER LADYWELL ROAD POLICE STATION, LONDON BOROUGH OF LEWISHAM:  
A HISTORIC BUILDING RECORD



**Figure 7:** Cell Block: Plan, Elevations and Profiles