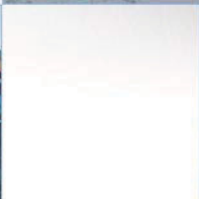
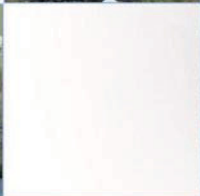


Lang Stracht, Aberdeen

Archaeological Evaluation: Data Structure Report

AOC 21384
June 2009



Lang Stracht, Aberdeen Archaeological Evaluation: Data Structure Report

On Behalf of:	GVA Grimley Quayside House 127 Fountain Bridge Edinburgh EH3 9QG
National Grid Reference (NGR):	NJ 8841 0872
AOC Project No:	21384
Prepared by:	Martin Cook
Illustration by:	Graeme Carruthers
Date of Fieldwork:	15th - 19th June 2009
Date of Report:	26th June 2009

This document has been prepared in accordance with AOC standard operating procedures.

Author: Martin Cook

Date: 26th June 2009

Approved by: John Gooder

Date: 26th June 2009

Draft Report Stage:

Date: 26th June 2009

Enquiries to: AOC Archaeology Group
Edgefield Industrial Estate
Edgefield Road
Loanhead
EH20 9SY

Tel. 0131 440 3593
Fax. 0131 440 3422
e-mail. admin@aocarchaeology.com



www.aocarchaeology.com

Contents

	Page
List of illustrations	3
List of plates	Error! Bookmark not defined.
List of appendices	3
Abstract.....	4
0 Non Technical Summary	5
1 Introduction.....	5
1.1 Site Location	5
1.2 Development proposal	5
1.3 Archaeological background	5
1.4 Curatorial control.....	5
2 Objectives.....	6
3 Method	6
4 Results.....	6
4.1 Introduction	6
4.2 Results	7
5 DISCUSSION	7
6 CONCLUSION.....	8
7 REFERENCES	8
APPENDIX 1: TRENCH SUMMARIES	9
APPENDIX 2: PHOTOGRAPHIC REGISTER	15
APPENDIX 3: CONTEXT REGISTER	15
APPENDIX 4: SAMPLE REGISTER	15
APPENDIX 5: DRAWING REGISTER.....	16
APPENDIX 6: DISCOVERY AND EXCAVATION IN SCOTLAND REPORT	17

List of illustrations

Figure 1	Site location
Figure 2	Plan showing position of trenches within evaluation area
Figure 3	Plan and sections of excavated features

List of appendices

Appendix 1	Trench Summaries
Appendix 2	Photographic Register
Appendix 3	Sample Register
Appendix 4	Drawing Register
Appendix 5	<i>'Discovery and Excavation in Scotland'</i> Entry

Abstract

A programme of archaeological works was required by GVA Grimley on behalf of Dobbies Garden Centre plc in respect to a proposed development at Lang Stracht, Aberdeen. The proposed development comprises a greenfield site covering c 4.1 ha. The proposed development lies within the administrative area of Aberdeen City Council, which is advised on archaeological matters by Dr Judith Stones, Keeper of Archaeology, and advisor to the council. A programme of archaeological works was required in keeping with the policies outlined in SPP23 (2008) and PAN42 (1994), in order to record the extent and significance of any archaeological remains which may be present within the development area.

A 10% sample of the c.4.1 ha area equated to trenching totalling 4,100 m². In total 33 trenches totalling 2050 linear metres were excavated during the course of the evaluation. The majority of the trenches contained no archaeological features and only a few modern artefacts were identified in the topsoil.

An arc of pits/postholes was identified at the western end of Trench 17 (NGR: NJ 8832 6677). The features were fully excavated, sampled and recorded.

0 NON TECHNICAL SUMMARY

- 0.1 A programme of archaeological works was required by GVA Grimley on behalf of Dobbies Garden Centres plc in respect to a proposed development at Lang Stracht, Aberdeen. The proposed development consists of a greenfield site covering c 2.85 ha. The proposed development lies within the administrative area of Aberdeen City Council, which is advised on archaeological matters by Dr Judith Stones, Keeper of Archaeology. A programme of archaeological works was required in keeping with the policies outlined in SPP23 (2008) and PAN42 (1994), in order to gauge the extent and significance of any archaeological remains which may be present within the development area.

1 INTRODUCTION

1.1 Site Location

- 1.1.1 The proposed development site is located on the western edge of Aberdeen (NGR: NJ 8841 0872) (Figure 1). The development area amounts to approximately 2.85 ha and presently consists of two arable fields currently in use. The site is bounded to the south by the Lang Stracht, to the north and east by farm access and to the west by arable fields.
- 1.1.2 The development comprises two south-facing, adjacent fields, which vary topographically from a flat area to the north leading into a gently sloping area in the south.

1.2 Development proposal

- 1.2.1 The development involves the creation of a Dobbies Garden Centre outlet together with associated access roads and landscaping.

1.3 Archaeological background

- 1.3.1 The proposed development contained no previously known archaeological sites or find spots. However, the wider landscape around Aberdeen is known to contain cropmark archaeological features.

1.4 Curatorial control

- 1.4.1 National planning policies and planning guidance, SPP23 (2008) and PAN42 (SOEnD 1994a), as well as the local plan policies, require a mitigation response that is designed to investigate the potential for archaeological sites within the development area and thence allow the preservation or recording of any significant remains.
- 1.4.2 The site is located within the Local Authority administrative area of Aberdeen City Council. The Council is advised on archaeological matters by Dr Judith Stones, Keeper of Archaeology. A programme of evaluation works that fully met the advice rendered by Dr Stones was undertaken.

2 OBJECTIVES

2.1 The objectives of the archaeological works were:

- i) to determine the character, extent, condition, quality, date and significance of any buried archaeological remains within the development area by means of a 10% sample field evaluation;
- ii) whilst the over-riding aim of the development was to provide information allowing preservation *in situ* of specifically identified archaeological sites, the evaluation was also designed to inform a mitigation scheme involving an appropriate form of mitigation, such as excavation, post-excavation analyses and publication, should further, less significant archaeological remains be encountered.

3 METHOD

3.1 The Written Scheme of Investigation (Dunbar 2009) proposed the excavation of trenches equating to a 10% sample of the development area. The site covered approximately 4.1 ha resulting in evaluation trenching with a total basal area of 4100 m². The thirty three trenches excavated correspond to a little over the 10% sample specified in the Written Scheme of Investigation (Dunbar 2008). The trench location was altered slightly in the field (from the trench location provided with the WSI) to avoid a live service in the north of the proposed development area.

3.2 All trenches were excavated with a 13 tonne tracked excavator using a 2.0 m wide ditching bucket. The trench details are summarised in Appendix 1. Machine excavation was conducted in shallow units/spits through topsoil/overburden to the upper surface of the underlying geological deposits. The evaluation trial trenching was undertaken according to AOC Archaeology Group's standard operating procedures as detailed with the Written Scheme of Investigation (Dunbar 2009).

4 RESULTS

4.1 Introduction

4.1.1 The works were conducted between 15th and 19th June 2009. The weather conditions during the evaluation were mixed, dry and sunny in parts with heavy showers. Overall archaeological visibility was good. In total thirty-three trenches were opened totalling 4,100 m² (Figure 2).

4.1.2 The various data gathered from the excavation are presented as a series of appendices:

Appendix 1 contains trench summaries;

Appendix 2 contains the photographic register;

Appendix 3 contains the finds register;

Appendix 4 contains the sample register;

Appendix 5 contains the drawing register;

Appendix 6 reproduces the *Discovery & Excavation in Scotland* entry.

4.2 Results

- 4.2.1 The proposed development area, currently under pasture was covered by a thin layer of rich silty topsoil, between 0.25 m and 0.35 m in depth. The soil creep meant that topsoil was generally deeper at the base of slopes. The natural subsoil comprised a mixture of gravel and silt, which directly overlay a grey clay.
- 4.2.2 The evaluation demonstrated that across a large portion of the site there was considerable plough disturbance evidenced by the presence of scarring across the upper surface of the subsoil. Drainage features, comprising both clay and rubble drains, aligned on varying angles were identified across the whole site.
- 4.2.3 An arc of four pits or post-holes was identified at the western end of Trench 17, the highest part of the proposed development area. The area around the features was excavated in an attempt to fully reveal the possible structure and identify any associated features, although any investigative trenching to the north was compromised by the presence of a buried utility service (water pipe). All four features were half sectioned and fully recorded. The features ([1702], [1704], [1706] and [1708]) measured between 0.40 m and 0.80 m in length by up to 0.15 m in depth. The arc (centred NGR: NJ 8832 6677) measured approximately 8 m in length. The four features each contained a single fill containing no obvious artefact material.
- 4.2.4 No other significant archaeological features or artefacts were identified and the remainder of the site appeared archaeologically sterile.

5 DISCUSSION

- 5.1 The evaluation revealed an arc of negative features on the highest point within the development area. Unfortunately, very little of the features survive; their upper portions and possibly any other associated features being removed by plough truncation.
- 5.2 Analogy with better preserved, excavated sites suggests that the features may form the remnants of later prehistoric settlement, such as the post-ring of a roundhouse. The arc, measuring approximately 7 m in length, is comparable to known examples throughout Scotland, but specifically to roundhouses found during on the large scale excavation completed at nearby Kintore (Cook and Dunbar 2008). However, with no other associated features or datable artefacts (or apparent environment material for radiocarbon assay) this hypothesis must remain unsubstantiated.

- 5.3 The general absence of any quantity of residual artefacts within the development area as whole would seem to indicate that the activity on site, as evidenced by the arc of pits, is both a discrete area of activity and a potentially short lived occupation. It is possible that these remains are actually at the periphery of a larger settlement that lay outwith the confines of the development area to the north and west.

6 CONCLUSION

- 6.1 The evaluation has revealed that a considerable majority of the development area is free from any significant archaeological deposits. However around the north-western part of the development there lay a discrete cluster of potentially prehistoric features. These features were fully excavated and recorded during the evaluation works. As no other significant archaeological features or artefacts were identified, and all the existing features have been excavated, it is recommended that no further on site archaeological works are required. However, the local archaeological record may benefit from further works on the retrieved soil samples. This would comprise the processing of the soil samples in an attempt to recover material for a radiocarbon date for the posthole arc feature in Trench 17 and perhaps an updated Data Structure Report and *Discovery and Excavation in Scotland* entry. These recommendations will require confirmation by the archaeological advisor to the City of Aberdeen Council.

7 REFERENCES

- Cook, M and Dunbar, L 2008 *Rituals, Roundhouses and Romans*, STAR Monograph 8,
- Dunbar, L. 2009 *Lang Stracht, Aberdeen: Archaeological Evaluation Written Scheme of Investigation* AOC Archaeology Client Report
- SOEnD 1994 Planning Advice Note 42. Archaeology – the Planning Process and Scheduled Ancient Monument Procedures. The Scottish Office Environment Department.
- SPP23 2008 *Scottish Planning Policy SPP23. Archaeology and Planning*. Nov.2008.

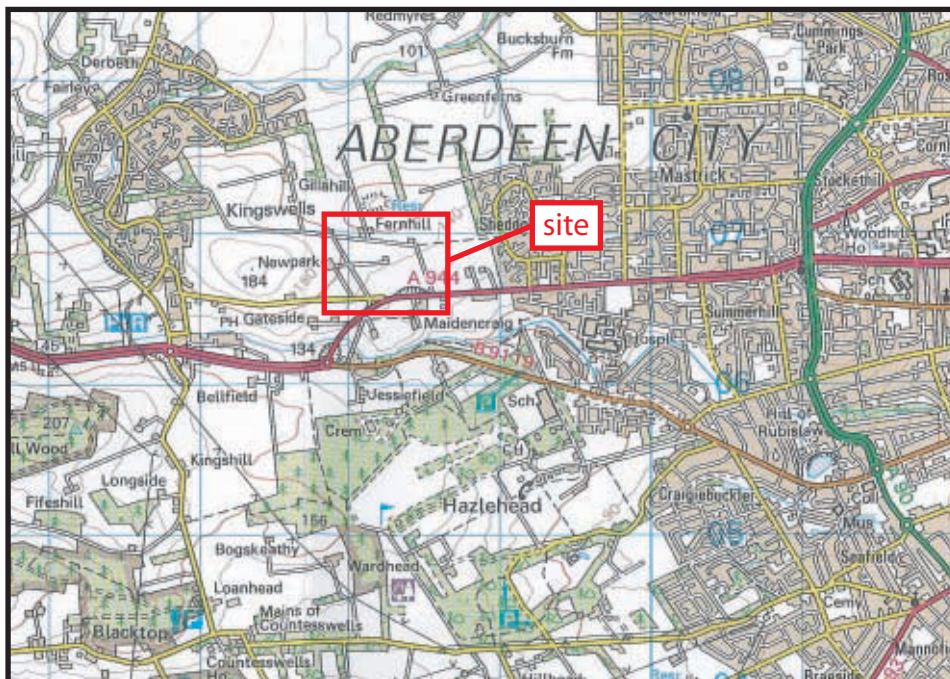
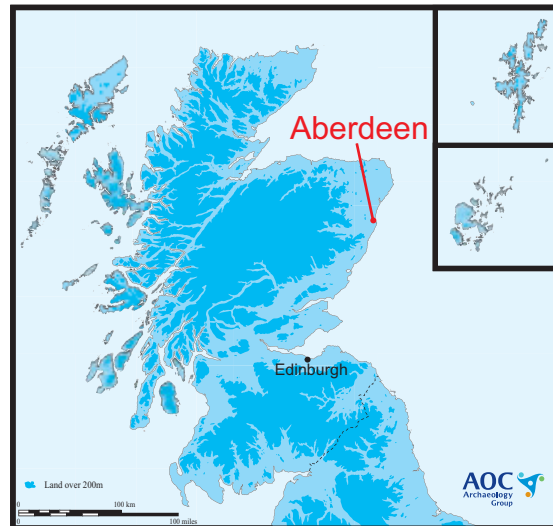


Figure 1: Site location



Figure 2: Location of evaluation trenches

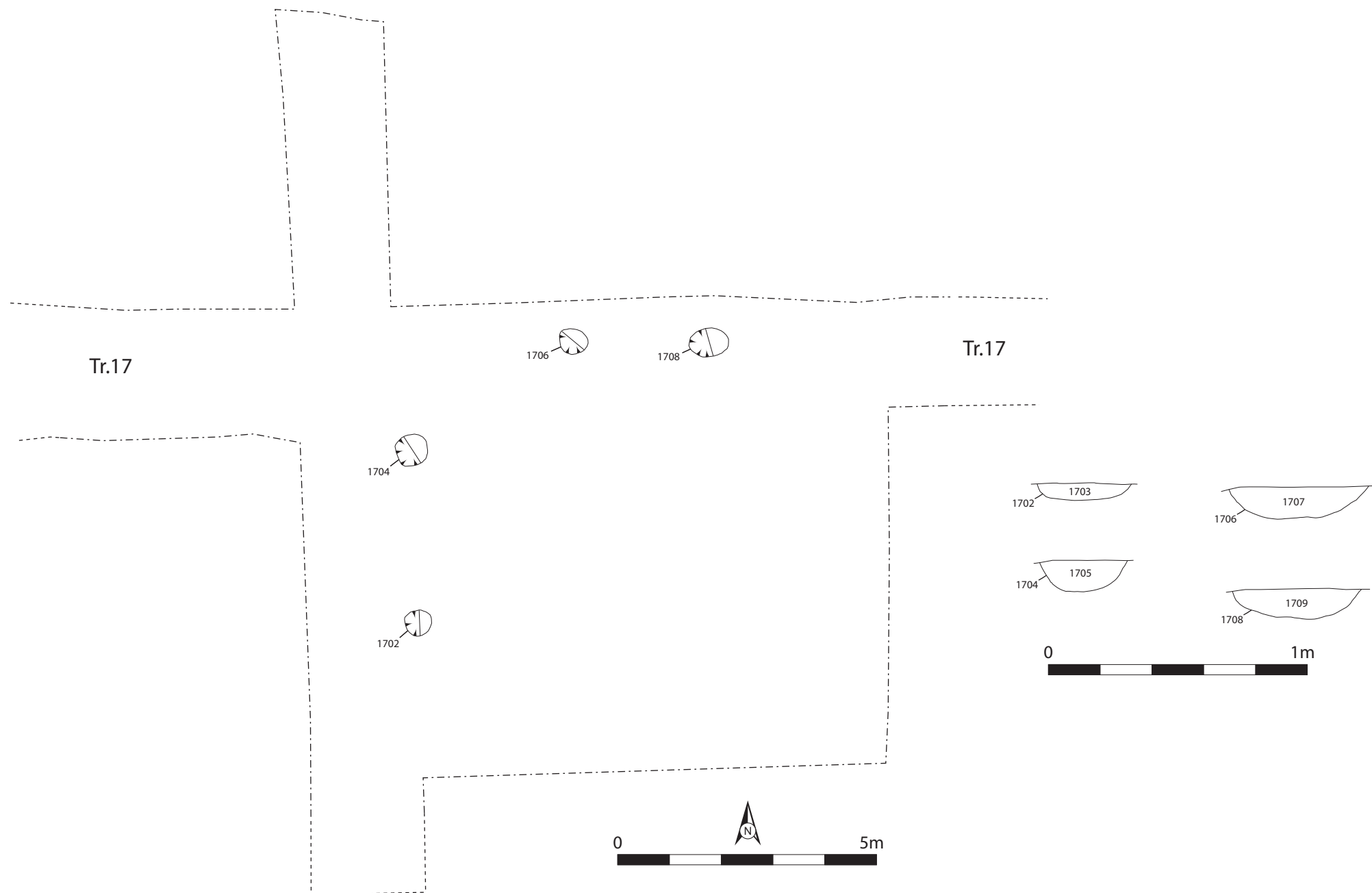


Figure 3: Plan and sections of features found in Tr.17

APPENDIX 1: TRENCH SUMMARIES

Trench 1

Dimensions	100 m by 2.0 m
Orientation	E-W
Depth of Topsoil	0.25 m to 0.30 m
Features	None
Subsoil	Orange gravel
Finds	None

Trench 2

Dimensions	50 m by 2.0 m
Orientation	NE-SW
Depth of Topsoil	0.25 m to 0.30 m
Features	None
Subsoil	Orange gravel
Finds	None

Trench 3

Dimensions	65 m by 2.0 m
Orientation	NW-SE
Depth of Topsoil	0.25 m to 0.30 m
Features	None
Subsoil	Orange gravel and silt
Finds	None

Trench 4

Dimensions	50 m by 2.0 m
Orientation	NW-SE
Depth of Topsoil	0.25 m to 0.30 m
Features	None
Subsoil	Orange gravel
Finds	None

Trench 5

Dimensions	50 m by 2.0 m
Orientation	NE-SW
Depth of Topsoil	0.25 m to 0.30 m
Features	None
Subsoil	Orange gravel
Finds	None

Trench 6

Dimensions	50 m by 2.0 m
Orientation	N-S
Depth of Topsoil	0.25 m to 0.30 m

Features	None
Subsoil	Orange gravel
Finds	None

Trench 7

Dimensions	100 m by 2.0 m
Orientation	N-S
Depth of Topsoil	0.25 m to 0.35 m
Features	None
Subsoil	Orange gravel
Finds	None

Trench 8

Dimensions	50 m by 2.0 m
Orientation	NE-SW
Depth of Topsoil	0.25 m to 0.35 m
Features	None
Subsoil	Orange gravel
Finds	None

Trench 9

Dimensions	50 m by 2.0 m
Orientation	NE-SW
Depth of Topsoil	0.25 m to 0.30 m
Features	None
Subsoil	Orange gravel
Finds	None

Trench 10

Dimensions	100 m by 2.0 m
Orientation	NE-SW
Depth of Topsoil	0.25 m to 0.30 m
Features	None
Subsoil	Orange gravel
Finds	None

Trench 11

Dimensions	500 m by 2.0 m
Orientation	NE-SW
Depth of Topsoil	0.25 m to 0.30 m
Features	None
Subsoil	Orange gravel
Finds	None

Trench 12

Dimensions	50 m by 2.0 m
Orientation	NE-SW
Depth of Topsoil	0.25 m to 0.30 m
Features	None
Subsoil	Orange gravel
Finds	None

Trench 13

Dimensions	50 m by 2.0 m
Orientation	E-W
Depth of Topsoil	0.25 m to 0.30 m
Features	None
Subsoil	Orange gravel
Finds	None

Trench 14

Dimensions	100 m by 2.0 m
Orientation	N-S
Depth of Topsoil	0.25 m to 0.30 m
Features	None
Subsoil	Orange gravel
Finds	None

Trench 15

Dimensions	100 m by 2.0 m
Orientation	N-S
Depth of Topsoil	0.25 m to 0.30 m
Features	None
Subsoil	Orange gravel
Finds	None

Trench 16

Dimensions	90 m by 2.0 m
Orientation	E-W
Depth of Topsoil	0.25 m to 0.30 m
Features	None
Subsoil	Orange gravel
Finds	None

Trench 17

Dimensions	100 m by 2.0 m
Orientation	E-W
Depth of Topsoil	0.25 m to 0.30 m
Features	Arc of four pits/post-holes [1702]-[1708]
Subsoil	Orange gravel

Finds None

Trench 18

Dimensions 50 m by 2.0 m
Orientation NE-SW
Depth of Topsoil 0.25 m to 0.30 m
Features None
Subsoil Orange gravel
Finds None

Trench 19

Dimensions 50 m by 2.0 m
Orientation NW-SE
Depth of Topsoil 0.25 m to 0.30 m
Features None
Subsoil Orange gravel
Finds None

Trench 20

Dimensions 50 m by 2.0 m
Orientation NE-SW
Depth of Topsoil 0.25 m to 0.30 m
Features None
Subsoil Orange gravel
Finds None

Trench 21

Dimensions 100 m by 2.0 m
Orientation N-S
Depth of Topsoil 0.25 m to 0.30 m
Features None
Subsoil Orange gravel
Finds None

Trench 22

Dimensions 100 m by 2.0 m
Orientation N-S
Depth of Topsoil 0.25 m to 0.30 m
Features None
Subsoil Orange gravel
Finds None

Trench 23

Dimensions 35 m by 2.0 m
Orientation NE-SW

Depth of Topsoil	0.25 m to 0.30 m
Features	None
Subsoil	Orange gravel
Finds	None

Trench 24

Dimensions	40 m by 2.0 m
Orientation	NE-SW
Depth of Topsoil	0.25 m to 0.30 m
Features	None
Subsoil	Orange gravel
Finds	None

Trench 25

Dimensions	40 m by 2.0 m
Orientation	E-W
Depth of Topsoil	0.25 m to 0.30 m
Features	None
Subsoil	Orange gravel and silt
Finds	None

Trench 26

Dimensions	50 m by 2.0 m
Orientation	N-S
Depth of Topsoil	0.25 m to 0.30 m
Features	None
Subsoil	Orange gravel
Finds	None

Trench 27

Dimensions	90 m by 2.0 m
Orientation	E-W
Depth of Topsoil	0.25 m to 0.30 m
Features	None
Subsoil	Orange gravel and sand
Finds	None

Trench 28

Dimensions	50 m by 2.0 m
Orientation	N-S
Depth of Topsoil	0.25 m to 0.35 m
Features	None
Subsoil	Orange gravel and sand
Finds	None

Trench 29

Dimensions	50 m by 2.0 m
Orientation	NE-SW
Depth of Topsoil	0.25 m to 0.30 m
Features	None
Subsoil	Orange gravel
Finds	None

Trench 30

Dimensions	50 m by 2.0 m
Orientation	NE-SW
Depth of Topsoil	0.25 m to 0.30 m
Features	None
Subsoil	Orange gravel
Finds	None

Trench 31

Dimensions	50 m by 2.0 m
Orientation	NE-SW
Depth of Topsoil	0.25 m to 0.30 m
Features	None
Subsoil	Orange gravel
Finds	None

Trench 32

Dimensions	50 m by 2.0 m
Orientation	NE-SW
Depth of Topsoil	0.25 m to 0.30 m
Features	None
Subsoil	Orange gravel
Finds	None

Trench 33

Dimensions	50 m by 2.0 m
Orientation	NW-SE
Depth of Topsoil	0.25 m to 0.30 m
Features	None
Subsoil	Orange gravel
Finds	None

APPENDIX 2: PHOTOGRAPHIC REGISTER

Black & White Print & Colour Slide Film 1

Frame	Trench	Detail	From
1-2	-	Registration	
3-4	Tr.7	Post-excavation shot of trench	N
5-6	Tr.7	Detail of discounted feature [701]	N
7-8	Tr.7	Detail of discounted feature [701]	N
9-10	Tr.2	Post-excavation shot of trench	NE
11-12		General shot of backfilled trenches	N
13-18		General post-excavation shot of field	N
19-20	Tr.17	North-facing section through feature [1702]	N
21-22	Tr.17	South-facing section through feature [1704]	S
23-24	Tr.17	East-facing section through feature [1706]	E
25-26	Tr.17	South-facing section through feature [1708]	S

APPENDIX 3: CONTEXT REGISTER

Context No.	Trench	Description
[1701]		Topsoil identified across the site comprising rich black silt, with rare modern ceramic and stone.
[1702]	Tr.17	Cut of pit/post-holes, measuring 0.50 m in length by up to 0.10 m in depth. Filled by [1703].
[1703]	Tr.17	Fill of cut [1702], comprising a black silty material with few inclusions.
[1704]	Tr.17	Cut of pit/post-hole, measuring 0.50 m in length by up to 0.50 m in length. Filled by [1705].
[1705]	Tr.17	Fill of cut [1704], comprising a black silty material with few inclusions.
[1706]	Tr.17	Cut of pit/post-hole, measuring 0.55 m in length by up to 0.15 m in depth. Filled by [1707].
[1707]	Tr.17	Fill of cut [1706], comprising a black silty material with frequent inclusions of rounded stones.
[1708]	Tr.17	Cut of pit/post-hole, measuring 0.80 m in length by 0.15 m in depth. Filled by [1709].
[1709]	Tr.17	Fill of cut [1708], comprising a black silty material with frequent inclusions of rounded stones.

APPENDIX 4: SAMPLE REGISTER

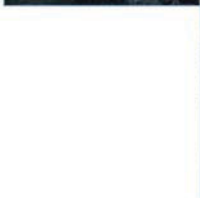
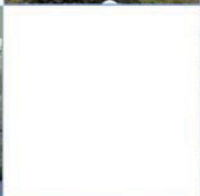
Trench	Context	Quantity
Tr.17	[1703]	1 bag
Tr.17	[1705]	1 bag
Tr.17	[1707]	1 bag
Tr.17	[1709]	1 bag

APPENDIX 5: DRAWING REGISTER

Drawing No	Description	Scale
1	Plan of features [1702], [1704], [1706] & [1708]	1:50
2	North-facing section through [1402]	1:10
3	South-facing section through [1404]	1:10
4	East-facing section through [1406]	1:10
5	South-facing section through [1407]	1:10

APPENDIX 6: DISCOVERY AND EXCAVATION IN SCOTLAND REPORT

LOCAL AUTHORITY:	Aberdeen City Council
PROJECT TITLE/SITE NAME:	Lang Stracht Archaeological Evaluation
PROJECT CODE:	AOC 21384
PARISH:	Aberdeen
NAME OF CONTRIBUTOR:	Martin Cook
NAME OF ORGANISATION:	AOC Archaeology Group
TYPE(S) OF PROJECT:	Archaeological Evaluation
NMRS NO(S):	None
SITE/MONUMENT TYPE(S):	None
SIGNIFICANT FINDS:	None
NGR (2 letters, 6 figures)	NJ 8841 0872
START DATE (this season)	15 th June 2009
END DATE (this season)	19 th June 2009
PREVIOUS WORK (incl. DES ref.)	None
MAIN DESCRIPTION: (NARRATIVE) (May include information from other fields)	<p>An evaluation was required in respect to a proposed development at Lang Stracht, Aberdeen. The proposed development comprised a greenfield site covering c 4.1 ha.</p> <p>A 10% sample of the area equated to trenching totalling 4,100 m². Thirty-three trenches were excavated with the majority containing no archaeological material. An arc of four pits/post-holes, possibly representing the post-ring of a later prehistoric roundhouse, was identified in the north-western end of the site at NGR: NJ 8832 6677. These features were completely excavated, sampled and recorded during the course of the evaluation works.</p>
PROPOSED FUTURE WORK:	
CAPTION(S) FOR ILLUSTRS:	n/a
SPONSOR OR FUNDING BODY:	GVA Grimley on behalf of Dobbies Garden Centre plc
ADDRESS OF MAIN CONTRIBUTOR:	C/o AOC Archaeology Group
EMAIL ADDRESS:	Martin.Cook@aocarchaeology.com



AOC Archaeology Group, Edgefield Industrial Estate, Edgefield Road, Loanhead EH20 9SY
 tel: 0131 440 3593 | fax: 0131 440 3422 | e-mail: edinburgh@aocarchaeology.com

www.aocarchaeology.com