

# ARCHAEOLOGICAL EXCAVATION REPORT

---

## Land off Chalkstone Way, Haverhill HVVH 059

A REPORT ON THE ARCHAEOLOGICAL EXCAVATIONS, 2006  
(Planning app. no. SE/05/1608/P)

J.A.Craven  
Field Team  
Suffolk C.C. Archaeological Service

© April 2008

Lucy Robinson, County Director of Environment and Transport  
Endeavour House, Russel Road, Ipswich, IP1 2BX

Suffolk County Council  
Archaeological Service

Suffolk County Council  
Archaeological Service

Suffolk County Council  
Archaeological Service

Suffolk County Council  
Archaeological Service

Suffolk County Council  
Archaeological Service

# Contents

List of Figures  
List of Tables  
List of Contributors  
Acknowledgements  
Summary  
SMR Information

## 1. Introduction

## 2. Methodology

## 3. Results

- 3.1. Introduction
- 3.2. Phase I: Bronze Age
- 3.3. Phase II: Early Iron Age
- 3.4. Phase III: Post-medieval
- 3.5. Unphased

## 4. The Finds

(Cathy Tester, Sarah Bates, Val Fryer & Sarah Percival)

- 4.1. Introduction
- 4.2. Pottery
  - 4.2.1. Prehistoric pottery
  - 4.2.2. Roman pottery

## 4.3. Miscellaneous

- 4.3.1. Fired clay
- 4.3.2. Flint
- 4.3.3. Burnt flint and stone
- 4.3.4. Coin

## 4.4. Biological evidence

- 4.4.1. Animal bone
- 4.4.2. Plant macrofossils
- 4.4.3. Shell

## 4.5. Discussion of the finds and environmental evidence

## 5. Discussion

## 6. Conclusions and recommendations

## References

## Appendices

- 1. Context list
- 2. Finds quantities
- 3. Pottery
- 4. Flint

## List of Figures

- 1. Site location plan
- 2. Evaluation plan
- 3. Site plan
- 4. Phase I: Bronze Age feature plan
- 5. Phase I: Bronze Age plans and sections
- 6. Phase II: Early Iron Age feature plan
- 7. Phase II: Early Iron Age plans and sections
- 8. Phase III: Post-medieval sections
- 9. Unphased plans and sections

## List of Tables

- 1. Post-medieval ditches
- 2. Finds quantities
- 3. Pottery quantities by period
- 4. Bronze Age pottery fabrics
- 5. Bronze Age pottery distribution by feature
- 6. Earlier Iron Age pottery fabrics
- 7. Earlier Iron Age pottery quantities by feature
- 8. Summary of flint types
- 9a. Plant macrofossils and other remains
- 9b. Plant macrofossils and other remains cont

## List of Contributors

All Suffolk C.C. Archaeological Service unless otherwise stated.

John Craven	Project Officer
Richenda Goffin	Finds Manager
Cathy Tester	Finds Officer
Sarah Bates	Flint specialist, NAU Archaeology
Sarah Percival	Prehistoric pottery specialist, NAU Archaeology
Val Fryer	Environmental specialist, Freelance

## Acknowledgements

This project was commissioned by CgMs Consulting on behalf of Abbey Developments Ltd and was monitored by Jess Tipper (Suffolk County Council Archaeological Service, Conservation Team).

The excavation was carried out by a number of archaeological staff (John Craven, Michael Green, Nick Taylor and Jonathan Van Jennians), all from Suffolk County Council Archaeological Service, Field Team.

The project was directed by John Craven, and managed by David Gill, who also provided advice during the production of the report.

The post-excavation was managed by Richenda Goffin. Finds processing and the production of site plans and sections was carried out by Gemma Adams. The production of digital site plans was carried out by John Duffy. The specialist finds and environmental reports were produced by Cathy Tester, Sarah Bates, Val Fryer and Sarah Percival.

## Summary

An archaeological excavation in advance of housing development on land off of Chalkstone Way, Haverhill identified evidence of three phases of limited activity in the prehistoric and post-medieval periods. Prehistoric features consisted of two isolated Bronze Age pits and a scatter of Early Iron Age pits and a single ditch. The post-medieval activity consisted of a series of linear parallel ditches, thought to relate to agricultural drainage.

## SMR information

Planning application no.	SE/05/1608P
Date of fieldwork:	25th July – 4th August 2006
Grid Reference:	TL 68374560
Funding body:	Abbey Developments Ltd
Oasis reference	Suffolkc1-27412

# 1. Introduction

An archaeological excavation was carried out in advance of housing development on land off of Chalkstone Way, Haverhill. The work was carried out to fulfill a planning condition, issued by Jess Tipper (Suffolk County Council Archaeological Service, Conservation Team), on application SE/05/1608/P. The work was commissioned by CgMs Consulting on behalf of the developer, Abbey Developments Ltd.

The total development area lay at TL 68374560 and consisted of 2.7ha of open fields with a stand of trees in the south-west corner adjacent to Chalkstone Way, and lay across a north-west to south-east aligned ridge, with the west part being at a height of c.97m before descending to c.91m to the north-east (Fig. 1). The natural subsoil was a mix of mid brown/orange clays, with occasional areas of mid brown/yellow clay and chalk, and patches of gravel.

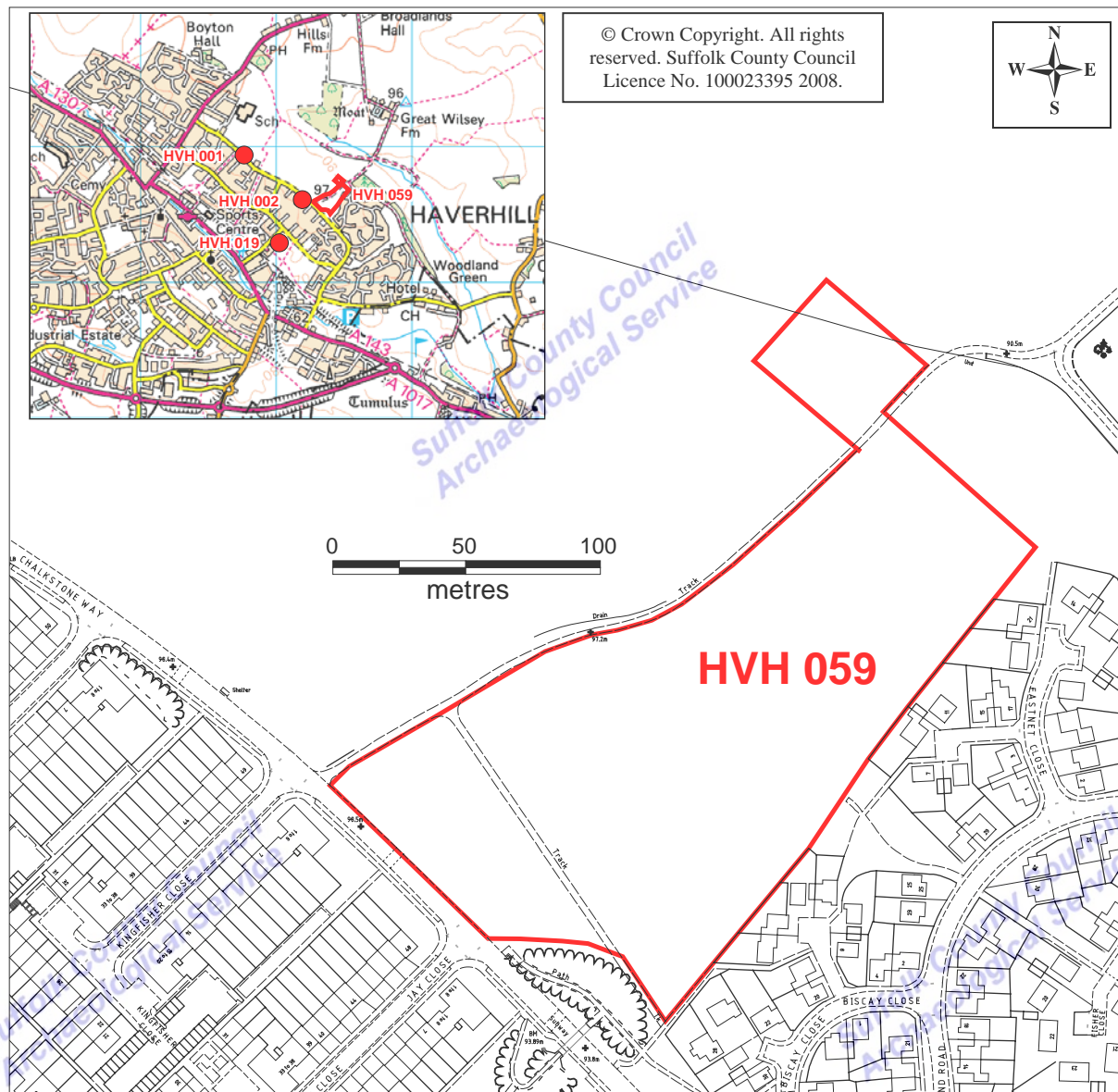


Figure 1. Site location plan

The site was of interest as it lay within an area of archaeological importance recorded on the County Sites and Monuments Record, with an Iron Age coin hoard, HVH 001, 600m to the north-west, and sparse scatters of Iron Age features, HVH 019, 400m to the south-west. A Roman findspot is also recorded 130m to the west of the site. A desk-based assessment of the



site by CgMs Consulting (Chadwick & Dicks 2004) concluded that the site had a moderate potential for prehistoric lithics and sub-surface features dating to the Bronze Age, Iron Age and Roman periods.

The entire development area was then evaluated by trial trenching (Craven 2006), which indicated the presence of a dispersed scatter of archaeological features, consisting of isolated pits and a system of parallel ditches, lying across the central part of the site (Fig.2). These features were thought to relate to a phase of Late Bronze Age to Iron Age occupation although the artefactual evidence meant precise dating was uncertain and the function of the features was unclear.

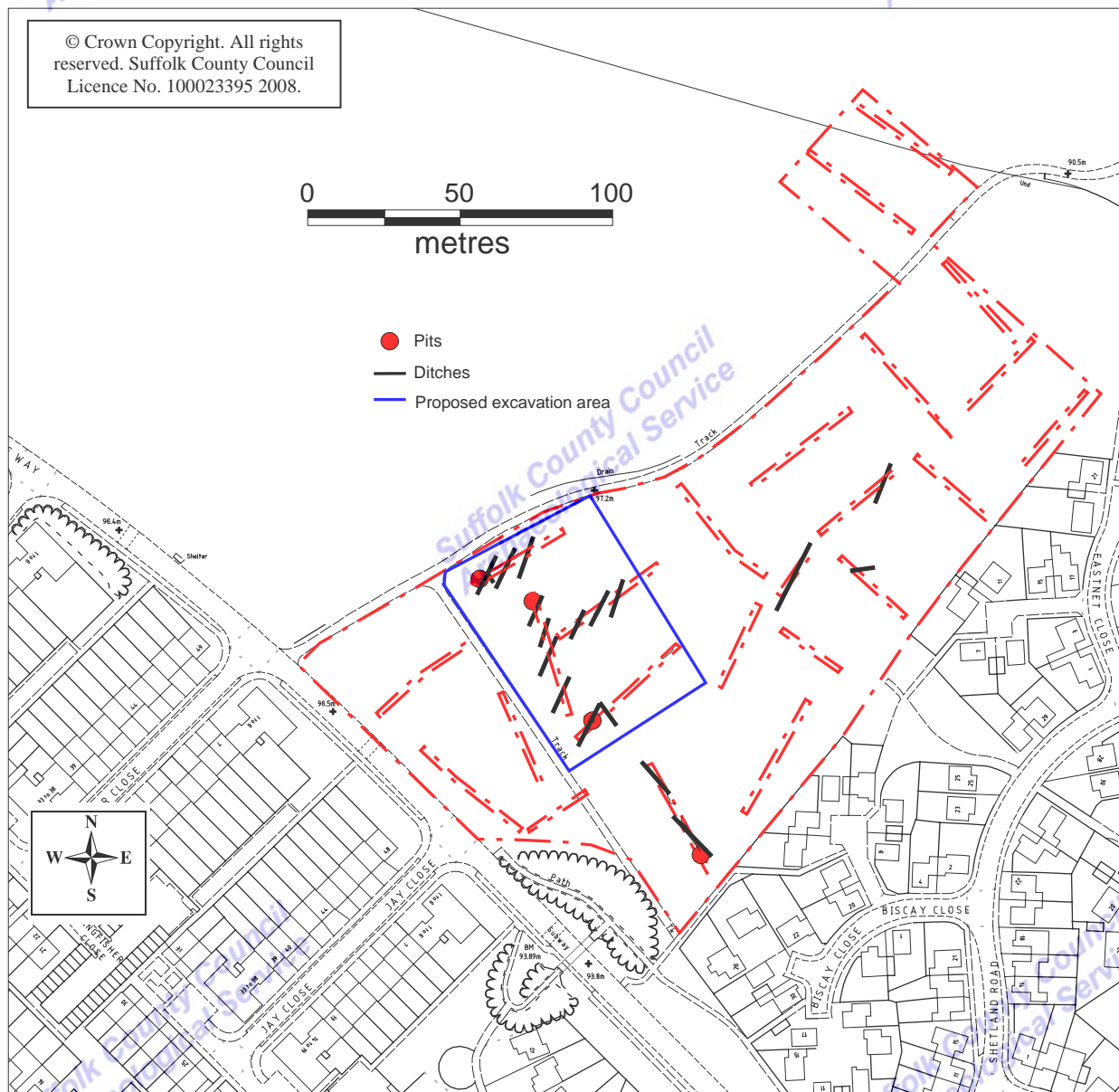


Figure 2. Evaluation plan

A further stage of fieldwork, an archaeological excavation of c.5000sqm centred upon trenches 04 to 07, was therefore required by Jess Tipper to enable a more detailed survey and record to be made of this occupation evidence, prior to its destruction by the development.

## 2. Methodology

The site was stripped by a mechanical digger, equipped with a ditching bucket, to the top of the archaeological levels, under the supervision of an archaeologist. The site strip totalled c.4100sqm and involved the removal of 0.3m-0.4m of topsoil, which overlaid the natural subsoil. Unstratified finds were collected during the machining and recorded as 0001.

Archaeological features were then clearly visible and were individually cleaned and excavated by hand. Generally 50% of pits and postholes and 10% of ditches were excavated, although certain features were 100% removed. Sections were also placed to investigate stratigraphic relationships.

The site was recorded using a single context continuous numbering system, with numbers 0001-0078 relating to the earlier evaluation, and planned with a Total Station Theodolite. Features were then individually planned, and sections recorded, at a scale of 1:20. Digital colour and black and white print photographs were taken of all stages of the fieldwork, and are included in the archive.

Site data has been input onto an MS Access database and recorded using the County Sites and Monuments code HVH 059. Bulk finds were washed, marked and quantified, and the resultant data was also entered onto a database. Inked copies of section and drawings have also been made.

An OASIS form has been completed for the project (reference no. suffolkc1-27412) and a digital copy of the report submitted for inclusion on the Archaeology Data Service database (<http://ads.ahds.ac.uk/catalogue/library/grey1it>).

The site archive is kept in the main store of Suffolk County Council Archaeological Service at Bury St Edmunds under SMR No. HVH 059.

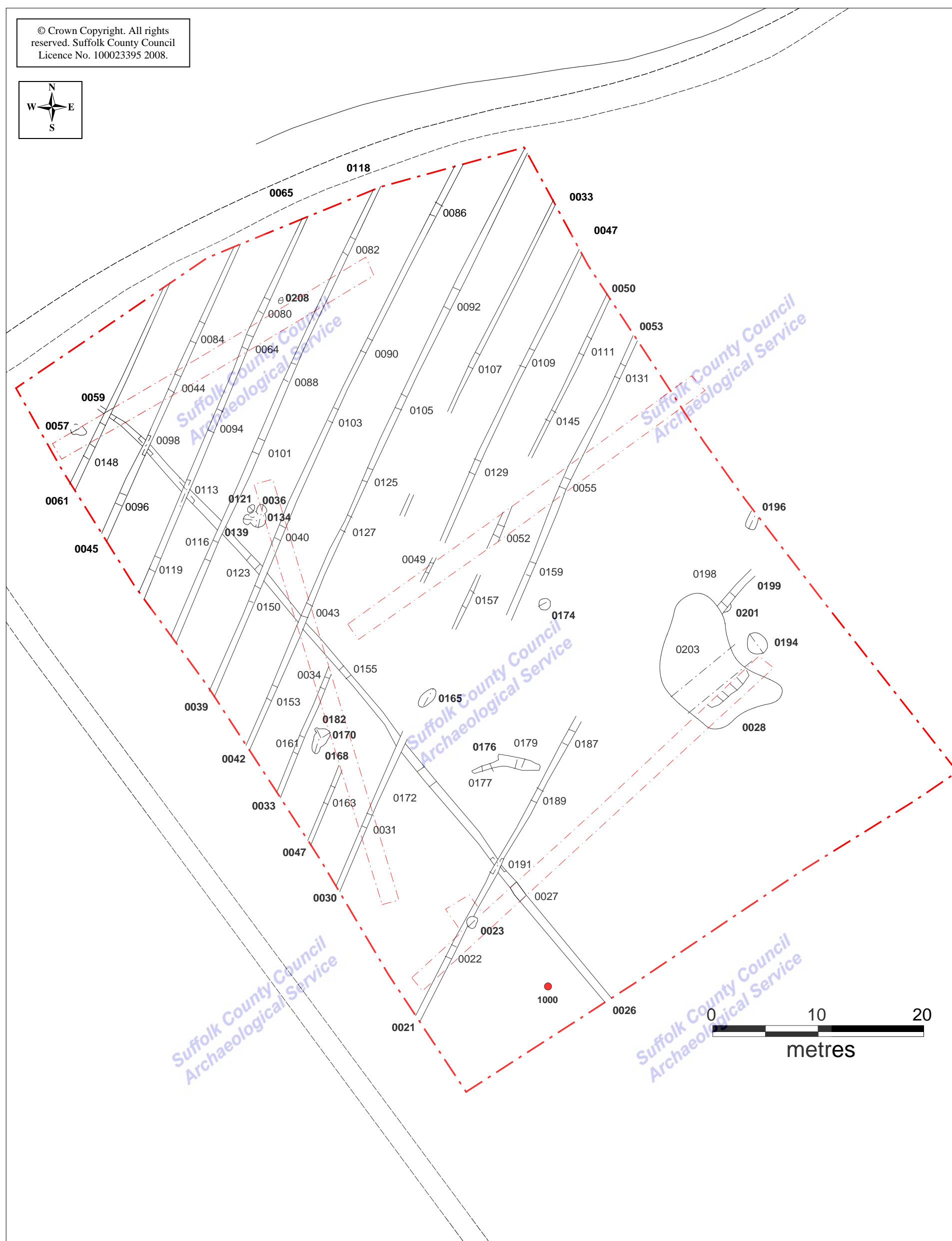


Figure 3. Site plan



### 3. Results

#### 3.1. Introduction

The site contained archaeological features relating to three phases of activity in the prehistoric and post-medieval periods (Fig. 3). As the archaeological levels and subsoil lay immediately below the 0.3m-0.4m of topsoil, it seemed likely that the site had been subject to an uncertain level of truncation by the plough. Unstratified finds though were scarce, with only a single sherd of Late Iron Age/Early Roman pottery and a single struck flint, 0001, being recovered during the site strip.

Prehistoric features consisted of two isolated Bronze Age pits and a scatter of Early Iron Age pits and a single ditch. The post-medieval activity consisted of a series of linear parallel ditches. In addition there were six unphased features, including a possible pond or waterlogged hollow.

The excavation finds report also includes the earlier evaluation results, which include several features in evaluation trenches lying outside the current excavation area (Fig. 2). To recap these were:

##### *Trench 01*

Ditch 0002, excavated in section 0005. Its fill, 0006, contained seven sherds of Early Iron Age sherd of pottery.

Ditch 0007, excavated in section 0012. Its fill, 0013, contained one Early Iron Age sherd of pottery.

##### *Trench 11*

Ditch 0067, excavated in section 0069. Its fill, 0068, contained twenty-one Early Iron Age sherds of pottery, flint and animal bone (some misnumbered as 0069).

##### *Trench 12*

Ditch 0074, excavated in section 0073. Its fill, 0075, contained three sherds of prehistoric pottery.

#### 3.2. Phase I: Bronze Age

(Figs. 4 and 5)

Evidence of a first phase of activity in the Bronze Age period consisted of two pits, 12m apart, located in the centre of the site and therefore apparently isolated from any further contemporary features. The two features contained small amounts of heavily abraded pottery from an unknown number of vessels. Averaging only 6g per sherd, this material is likely to be redeposited.

0165, an oval pit measuring 1.6m by 1.2m and 0.2m deep, was 100% excavated. Its fill, 0166, was a dark brown clay with chalk from which four sherds of Bronze Age pottery were recovered.

0174, a pit measuring 1.35m by 1.24m and 0.5m deep, with moderate sloping sides and a concave base, was 100% excavated. The basal fill, 0185, was a mid grey clay with some charcoal flecks from which twelve sherds of Bronze Age pottery, struck flint and animal bone was collected. Above this was 0184, a dark grey clay with numerous charcoal flecks and

scattered flints, containing a single sherd of Bronze Age pottery. The upper fill, 0175, was a mid grey clay with regular charcoal flecks and scattered flints from which five sherds of Bronze Age pottery, struck flint and animal bone was collected.

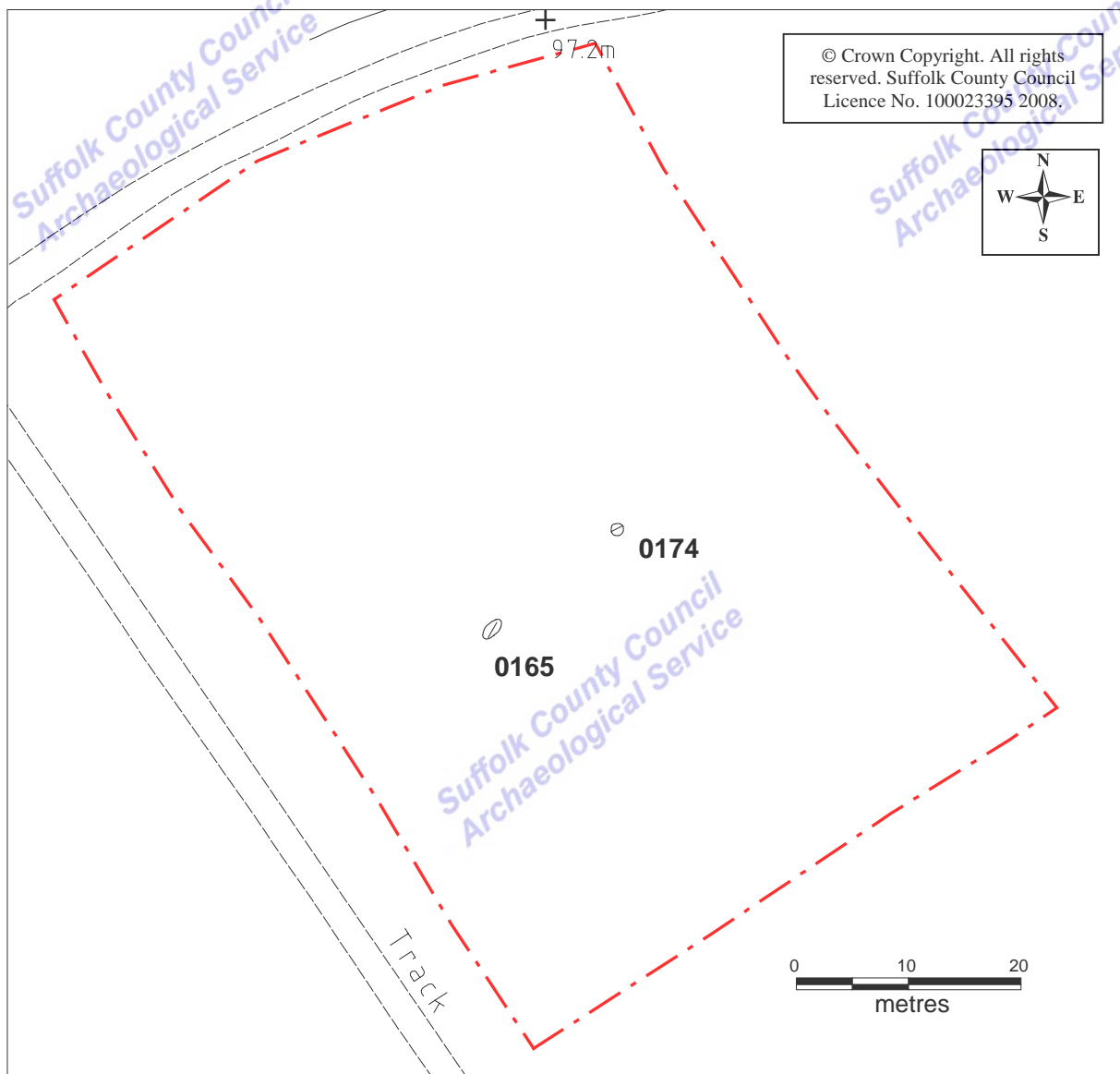


Figure 4. Phase I: Bronze Age feature plan

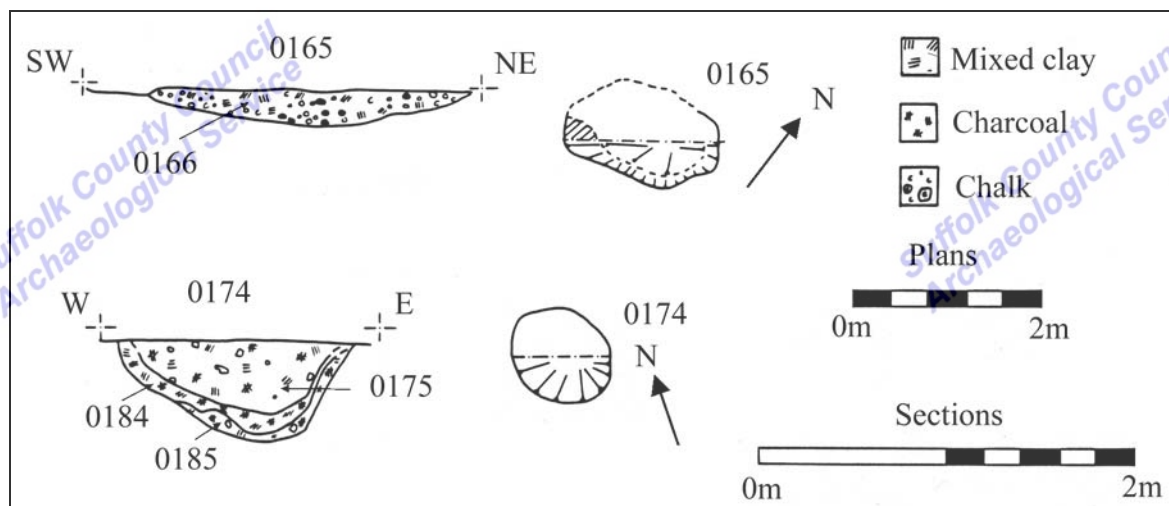


Figure 5. Phase I: Bronze Age plans and sections

### 3.3. Phase II: Early Iron Age

(Figs. 6 and 7)

Evidence of a second phase of activity in the Early Iron Age was mainly located on the western side of the site. The features consisted of two inter-cutting groups of pits and two separate pits spread over a distance of 45m on either side of, and in close proximity to, a linear ditch. Another pit lay on the eastern edge of the site, with a further nearby pit possibly dating to this period.

0023 was a circular pit, identified in the evaluation, measuring 1.2m in diameter and 0.3m deep with a possible recut posthole on its north-east side extending to 0.5m deep. Initially 50% excavated this showed that the recut posthole had a fill, 0024, of dark-mid brown/grey mottled clay with chalk flecks, flints and orange iron pan mottling. Nineteen sherds of Early Iron Age pottery were recovered from this fill. Lying under 0024, within the broader pit, was 0025, a pale creamy orange/ brown clay containing nine sherds of Early Iron Age pottery.

The evaluation trench was subsequently extended to expose the whole of the pit as the base (140mm in diameter) of an Early Iron Age vessel, 0063, was exposed protruding from the section within fill 0024. A further quadrant of pit 0023 was then removed, with section 0056, at 90° to the original section, showing that 0023 cut the post-medieval ditch 0021 (see below). The pit was finally 100% excavated which showed this pottery base to be lying inverted at the centre and on the base of the pit. Other large sherds, lying close by within the fill, were also numbered as 0063 but came from two separate vessels, a small coarse shouldered jar with a decorated rim and a round shouldered jar.

Ditch 0026/0059 ran the length of the site on a south-east to north-west alignment and appeared to be cut by the main post-medieval ditch series. Excavated in eight sections (0027, 0059, 0098, 0113, 0123, 0155, 0172 and 0191) it varied between 0.55m-0.8m wide and 0.11m-0.3m deep and had moderate sloping sides and a concave base. The respective fills of the eight sections (0027, 0060, 0100, 0115, 0124, 0156, 0173, and 0192) were generally of a mid brown clay with occasional chalk or gravel. Early Iron Age pottery sherds were recovered from several of these fills; four from 0027, four from 0124, two from 0156 and eight from 0173. Two prehistoric pottery sherds were recovered from 0192. One decorated rim sherd in fill 0124 is of a contemporary date with the vessels in pit 0023.

0036, 0121, 0134 and 0139 were a group of pits which are probably broadly contemporary although they did not all contain any finds material. 0134 appeared to be the latest pit, probably cutting the fills of pits 0036 and 0139 while pit 0121 was slightly separate from the rest of the group. Two sections 0133 and 0144 were placed across the intercutting pits before all four features were 100% excavated.

0036, originally identified during the evaluation, measured 1.3m in diameter and 0.25m deep with steep sides and a flat base. Its lower fill, 0037, was a mid grey/brown clay with orange mottling and charcoal flecks. The upper fill, 0038, was a mid grey/brown clay with orange mottling and charcoal flecks. Fully exposed during the excavation, the pit was then re-excavated and recorded in section 0133 with pit 0134. The western half was then removed as 0138, a mid grey clay with orange flecks.

0121 was an oval pit, measuring 0.8m long, 0.66m wide and 0.11m deep. Its fill, 0122, was a mid grey/brown clay.

0134 was a large, pit, measuring 1.4m wide and 0.4m deep with moderate sloping sides and a concave base. Excavated in section 0133 it contained a series of deposits. The basal fill, 0137,

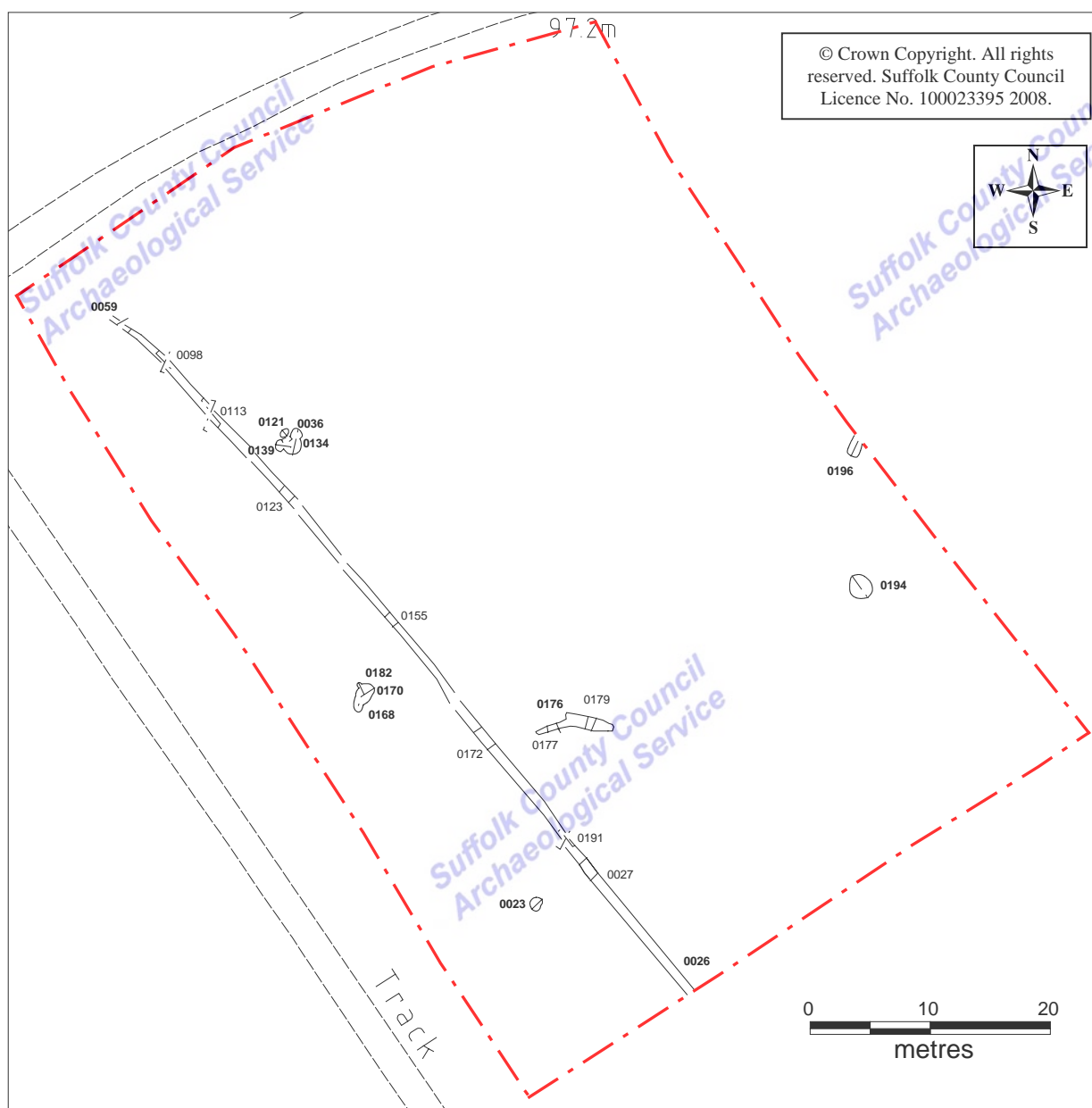


Figure 6. Phase II: Early Iron Age feature plan

was a mid brown clay with numerous orange flecks containing one sherd of Early Iron Age pottery, nine pieces of struck flint and a small assemblage of animal bone. Above this was 0136, a dark grey/black clay with pieces of charcoal, nineteen sherds of Early Iron Age pottery and a small assemblage of struck flint, animal bone and fired clay. The final fill, 0135, was a mid brown clay with orange flecks and was affected by modern disturbance.

A further quadrant of the pit was excavated in section 0144 showing that it cut pit 0139, with the fills being renumbered as 0143, 0142 and 0141 respectively. As the relationship of these deposits with the fills of pit 0139 was unclear an overall number, 0147, was issued to the finds assemblage of three Early Iron Age pottery sherds, flint, animal bone and fired clay, which could have come from either feature.

0139 was a very shallow pit, cut by the western side of pit 0134. Circular in plan, it measured 0.8m by 0.6m wide and 0.14m deep. Its fill, 0140, was a mid brown clay with frequent orange flecks but could not be positively distinguished from the fills of pit 0134 and so the three pottery sherds recovered were collected as 0147.

0168, 0170 and 0182 were an intercutting group of pits which, although not all containing datable material are probably broadly contemporary.

0168 was a small pit excavated in section 0167 with pit 0170 with which its relationship was unclear. Oval in plan, it measured 1.4m long, 0.8m wide and 0.25m deep with steep sides and a flat base. Its fill, 0169, was a compact mid brown clay with occasional chalk and charcoal flecks and scattered flints.

0170 was a circular pit measuring c.1.2m in diameter and 0.38m deep with moderate sloping sides and an irregular concave base. Excavated in sections 0167 and 0181 its fill, 0171, was a compact mid-brown clay with occasional chalk and charcoal flecks and scattered flints. Forty-seven sherds of pottery, from an Early Iron Age coarse shouldered jar, together with struck flint and animal bone were collected. A separate context number, 0186, was issued for a separate, nearly complete, Early Iron Age coarse jar found within fill 0171.

0182 was a small pit lying to the north of pit 0170. Section 0181 was excavated across the two features but did not establish their relationship. Circular in plan it measured 0.4m wide, 0.5m long and 0.15m deep, with moderate sloping sides and a concave base. Its fill, 0183, a mid brown, compact clay, with flecks of chalk and charcoal and scattered flints, contained a single sherd of prehistoric pottery.

0176 was an irregular linear feature, possibly a combination of two or more indistinguishable pits. Two sections were excavated, 0177 and 0179, which showed it to have moderate sloping sides and an undulating base, and varying from 0.3m to 0.6m wide and up to 0.28m deep. The respective fills, 0178 and 0180, were both a dark grey/brown clay with occasional flints and frequent chalk nodules. Two sherds of early Iron Age pottery were collected from 0178.

0194 was a large circular pit, measuring 2m in diameter and 0.37m deep, with moderate sides and a concave base. Its fill, 0195, was a dark brown, stony, clay from which a single sherd of prehistoric pottery was collected. It seems likely that this feature is contemporary with the spread of early Iron Age activity.

0196 was an isolated oval pit, lying partially under the eastern site edge some 35m from the other features in this phase. Its fill, 0197, was a dark brown clay with stones from which two sherds of Early Iron Age pottery were recovered.



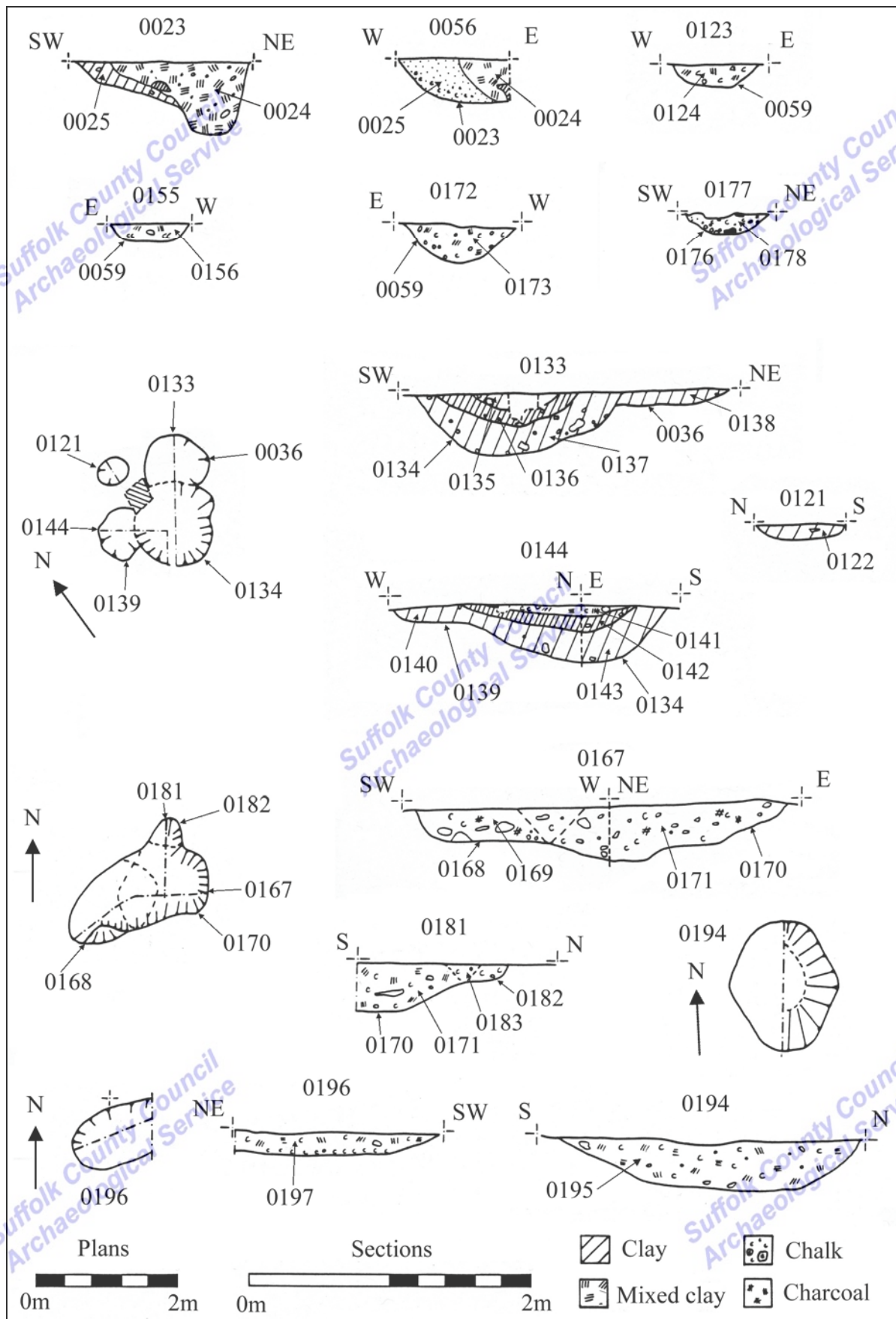


Figure 7. Phase II: Early Iron Age plans and sections

### 3.4. Phase III: Post-medieval

A series of eleven parallel ditches was identified, all c.4m-5m apart and aligned south-east to north-west. Each ditch was c.10%+ excavated via multiple sections which showed that they were of broadly similar dimensions, although in cases heavily affected or wholly removed by truncation from ploughing and the site strip. Although often unclear this series of ditches appeared to cut ditch 0026/0059. Because of the similarity and regularity of the ditches they are thought to be of a post-medieval date, probably related to agricultural drainage.

The fills were also broadly similar, generally a dense brown clay with scattered chalk and gravel. The limited quantities of prehistoric or Roman pottery that were recovered were small and abraded, and are likely to be redeposited.

A brief summary of each ditch is listed in Table 1 below, full details are listed in Appendix 1.

Ditch No.	Sections	Average dimensions	Fills
0021	0022, 0187, 0189, 0191	0.5m-0.6m wide 0.15m-0.2m deep	0022, 0188, 0190, 0193
0030/0050	0031, 0052, 0111, 0145, 0157	0.5m-0.6m wide 0.1m-0.2m deep	0032, 0051, 0112, 0146
0033	0034, 0107, 0161	0.43m-0.5m wide 0.1m-0.24m deep	0035, 0108, 0162
0039	0040, 0086, 0090, 0103, 0150	0.56m-0.8m wide 0.12m-0.3m deep	0041, 0087, 0091, 0104, 0151
0042	0043, 0092, 0105, 0125, 0127, 0153	0.55m-0.8m wide 0.12-0.28m deep	0078, 0093, 0106, 0126, 0128, 0154
0045	0044, 0084, 0096, 0098	0.65m-0.9m wide 0.26m deep	0046, 0085, 0097, 0099
0047	0049, 0109, 0129, 0163	0.34m-0.65m wide 0.11m-0.2m deep.	0048, 0110, 0130, 0164
0053	0055, 0131, 0159	0.33m-0.66m wide 0.08m-0.11m deep	0054, 0132, 0160
0061	0148	0.5m wide 0.05m-0.2m deep	0062, 0149
0065	0064, 0080, 0094, 0113, 0119	0.52m-0.8m wide 0.16m-0.3m deep.	0066, 0081, 0095, 0114, 0120
0118	0082, 0088, 0101, 0116	0.55m-0.8m wide 0.12-0.2m deep.	0083, 0089, 0102, 0117

Table 1. Post medieval ditches

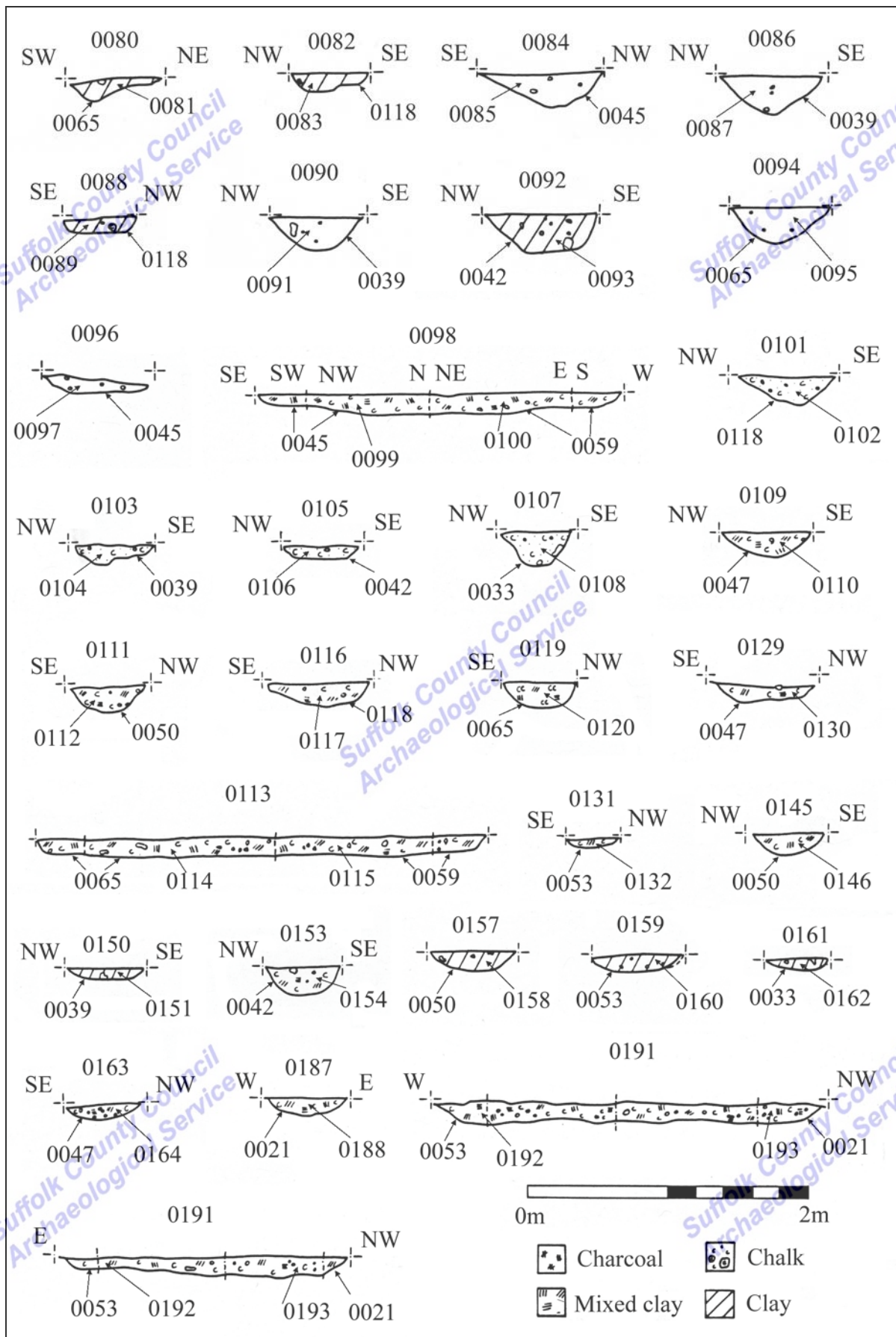


Figure 8. Phase III: Post-medieval sections

### 3.5. Unphased

0028 was a large possible pit, natural hollow or pond measuring c.5m long and 0.8m+ wide and 0.35m deep, through which a machine excavated section, 0203, was placed. Irregular in plan it contained a series of fills. The basal deposit, 0207, was a mixed, mid-yellow/grey silt/clay with broken chalk. A bulk environmental sample taken from this deposit proved inconclusive with no evidence of domestic or agricultural activity in the vicinity at any time. Above 0207 lay 0206, a dark brown/red stained silt/clay. Above 0206 was 0205, a mix of clay, chalk and gravel and then the upper fill, 0204, a brown clay with occasional gravel. No finds were recovered from any of these deposits.

0057 was an irregular circular pit, possibly a natural feature, identified and excavated in the evaluation. Measuring 0.8m wide and 0.4m deep its fill, 0058, was a mid brown clay with chalk flecks and occasional charcoal flecks towards the base.

0199 was a short length of linear ditch, aligned east-west, emerging from the eastern side of 0028 before fading away after c.5m. Excavated in section 0198 it was shown to cut pit 0201 and measured 0.6m wide and 0.18m deep with moderate sloping sides and a concave base. Its fill, 0200, was a mid brown clay with moderate chalk flecks and occasional flints.

Pit 0201 was largely removed by ditch 0199 but was probably circular and measured 0.6m in diameter and 0.16m deep. Its fill, 0202, was a light orange/brown clay with occasional chalk flecks and flints.

0208 was a small, oval-shaped pit, with irregular sloping sides and a smooth concave base. Measuring 0.54m wide by 0.85m long and 0.2m deep its fill, 0079, was a mid brown/orange/grey clay with occasional charcoal flecks.



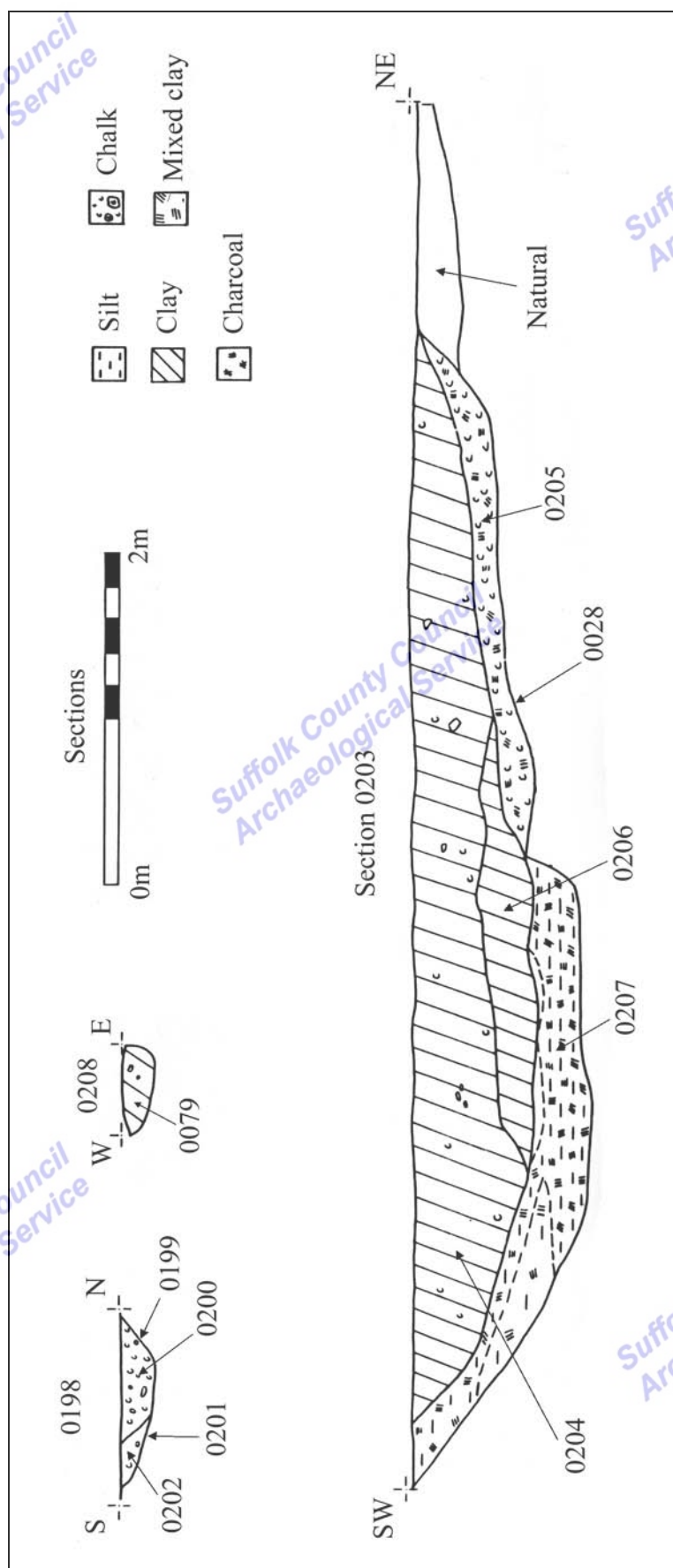


Figure 9. Unphased plans and sections



## 4. Finds and environmental evidence

by Cathy Tester, Sarah Percival, Sarah Bates and Val Fryer

### 4.1 Introduction

Table 2 shows the quantities of finds collected during the excavation. A full quantification by context is included as Appendix 2.

Find type	No.	Wt/g
Pottery*	287	1880
Fired clay	9	57
Worked flint*	61	835
Burnt flint/stone	38	366
Copper alloy	1	-
Animal bone	133	746
Shell	1	-

Table 2. Finds quantities. (\* = includes evaluation material)

### 4.2. Pottery

A total of 287 sherds of pottery weighing 1880g was collected during the excavation and evaluation. All but a few sherds, weighing 25g, were prehistoric (Appendix 3).

#### 4.2.1. Prehistoric pottery

Sarah Percival

A total of 283 sherds of prehistoric pottery weighing 1855g was recovered from thirty-two excavated features. The assemblage is mainly of earlier Iron Age date (600-300BC) with smaller amounts of Bronze Age sherds (2000-600BC) and sherds that are prehistoric but not closely datable. The pottery is in fairly poor condition. The totals by period are shown in Table 3.

Pottery date	No	% No	Wt/g	% Wt
Bronze Age	21	7.4	117	6.3
Earlier Iron Age	248	87.6	1722	92.8
Not closely datable	14	4.9	16	0.9
<b>Total</b>	<b>283</b>	<b>100.0</b>	<b>1855</b>	<b>100.0</b>

Table 3. Pottery quantities by period

### Methodology

The assemblage was analysed in accordance with the guidelines for analysis and publication laid down by the Prehistoric Ceramic Research Group (PCRG 1992; 1997). The total assemblage was studied and a full catalogue was prepared. The sherds were examined using a binocular microscope (x 10 magnification) and were divided into fabric groups defined on the basis of inclusion types present. Fabric codes were prefixed by a letter code representing the main inclusion ('F' = flint, 'G' = grog and 'Q' = quartz). The sherds were counted and weighed to the nearest whole gram. Vessel form and sherd type were recorded and decoration and abrasion were also noted.

### Bronze Age

Twenty one sherds weighing 117g are made of soft grog tempered fabric characteristic of vessels made during the Bronze Age. No diagnostic rim forms or decorated sherds were found, however the thickness of the sherds and hand wiped finish may suggest a small undecorated urn.

### Fabric

Two fabrics were identified. Both contained quantities of soft crushed grog which was widely added to clays from the later Neolithic and into the full Bronze Age (Cleal 1995, 190). Fabric descriptions and quantities are shown below.

Fabric	Description	No.	Wt/g
G1	Moderate, rounded grog; moderate, sub-angular quartz sand. Interior smoothed mid brown; core: dark brown inner, orange to buff outer; exterior: orange buff. Vesicular surface and matrix. Soft.	9	35
G2	Moderate, rounded grog; moderate, sub-angular quartz sand, occasional, angular calcined flint. Interior smoothed mid brown; core: dark brown inner, orange to buff outer; exterior: orange buff. Vesicular surface and matrix. Soft.	12	82
Total		21	117

Table 4. Bronze Age pottery fabrics

### Distribution

Bronze Age pottery was found in features 0165 and 0174 both pits located towards the centre of the large excavated area (Table 5). Three sherds of heavily abraded grog tempered pottery, plus an undatable scrap, came from the single fill of pit 0165. The second pit 0174 contained eighteen Bronze Age sherds (114g) also heavily abraded and spread between three fills within the feature. It is likely that the pits are of Bronze Age date as they did not contain any later prehistoric or other pottery, although the poor condition of the sherds suggests that the pottery was redeposited. Pit 0174 also contained worked flint including a fresh, unabraded scraper (S Bates *pers. comm.*)

Feature	Context	No.	Wt/g
0165	0166	3	3
0174	0175	5	16
	0184	1	16
	0185	12	82
Total		21	117

Table 5. Bronze Age pottery distribution by feature

### Earlier Iron Age

The earlier Iron Age assemblage comprised 248 sherds weighing 1722g. Over 40% of the assemblage came from pit 0170 (0171), which contained 698g of pottery, mostly from a single partially-complete vessel.

### Fabric

Five fabrics were identified in two fabric groups. The majority of the sherds are in flint-tempered fabrics which contain varying quantities and sizes of crushed calcined flint. Two fabrics containing quartz sand were also found. The range of fabrics present is typical of those found on many earlier Iron Age sites in Suffolk (*c.f.* Martin 1992, 31). Fabric descriptions and quantities are shown below.

Fabric	Description	No.	Wt/g
F1	Common, fine, ill sorted angular calcined flint. Moderate, fine, ill sorted sub-rounded quartz sand	45	612
F2	Common, medium, ill sorted angular calcined flint. Moderate, fine, ill sorted sub-rounded quartz sand	140	880
F3	Common, coarse, ill sorted angular calcined flint. Moderate, fine, ill sorted sub-rounded quartz sand	3	15
Q1	Common, fine, ill sorted, rounded quartz sand. Exterior mid-brown, core dark brown black, interior buff brown. Very hard.	34	73
Q2	Common, fine, ill sorted, rounded quartz sand; spares small to medium angular flint. Exterior mid-brown, core dark brown black, interior buff brown. Hard	26	142
Total		248	1722

Table 6. Earlier Iron Age pottery fabrics

### Form

Few diagnostic forms are found within the assemblage. A medium coarse Class I jar (Barrett 1978, 1980) with a diameter at the rim of 120mm was found in pit 0023. The jar has angular shoulders and fingertip impressed decoration on the rim top similar to an example from Barham dated typologically to the sixth century BC (Martin 1992, Fig.21, 55). A large base angle was also found in the same feature but it is unclear if the sherds are from the same vessel. A second shouldered jar with impressed decoration forming a cable motif was also found in ditch 0059 and is almost certainly of a contemporary earlier Iron Age date with the vessel(s) from pit 0023. Three further undecorated Class I coarse jars were also found, two in pit 0170 and one in pit 0134/0139. A small undecorated Class V cup with rounded rim ending was also found in pit 0134/0139.

Form and decoration of the pottery is similar to vessels of Cunliffe's Darmsden style, which dates to the fifth to third centuries BC (Cunliffe 2005 Fig. A:13) but also has elements, including the fingertip impressed decoration on the rim top seen on the 0063 sherd, found at West Harling (*ibid.* Fig. A:5). Mixtures of elements of different style groups have been found elsewhere in Suffolk, such as Barham (Martin 1992, 38).

One sherd, from ditch 0045 (0044), has a pierced hole made when the clay was still wet. The date for this sherd is unclear as although the fabric is flint tempered similar to that of the earlier Iron Age pottery found elsewhere on site the presence of piercing is more common in the earlier Neolithic period (Healy 1988, P5).

### Distribution

The majority of the earlier Iron Age pottery came from the fills of five pits (Table 7). Pits are common on most Iron Age sites in East Anglia and usually contain the bulk of the pottery assemblage. Distribution of pottery between features is uneven often with a few features containing large assemblages whilst others contain only a few sherds.

Feature type	Feature	No	Wt/g
Ditch	0002	7	3
	0007	1	2
	0021	2	2
	0026	4	10
	0033	1	1
	0045	10	37
	0059	12	66
	0067	19	81
	0176	2	24
	0199	8	22
Ditch total		66	248
Pit	0023	48	660
	0134	18	84
	0134 /0139	3	20
	0170	111	698
	0196	2	12
Pit total		182	1474
<b>Total</b>		<b>248</b>	<b>1722</b>

Table 7. Earlier Iron Age pottery quantities by feature

The remainder of the earlier Iron Age assemblage came from later ditch fills which are characterised by small, abraded sherds. The average sherd weight for sherds from the pit fills is c.8g whilst that for the sherds from ditch fills is only 3g. This suggests that the pottery from the ditches has been subject to a high degree of attrition and is clearly redeposited. The sherds from

the pits are larger and in some cases, such as in pits 0023 and 0170, were placed into the features as large partially complete vessels.

#### *Discussion*

The assemblage is predominantly of earlier Iron Age date with angular shoulders and fingertip impressed decoration similar to the assemblage from Micklemoor Hill, West Harling, Norfolk, a site dated to the 6th century BC (Clark and Fell 1953). In Suffolk a broadly contemporary style group has been identified at Darmsden (Cunliffe 2005) which was current from the ninth to fourth centuries BC.

The assemblage is similar to the pottery from Drovers Went, Bury St Edmunds (Percival 2004), Barham, Suffolk (Martin 1992) and Valley Belt, Trowse (Percival 2000) which contain many similar elements, particularly the presence of coarse Class I jars with fingertip impressed decoration to the rim top alongside small fine, sand tempered Class V cups (Barrett 1978). The Drovers Went assemblage has been dated to a period centred on the fifth century BC and it is probable that the Haverhill assemblage is contemporary with this.

#### *4.2.2. Roman pottery*

Four sherds of wheelmade Late Iron Age and Roman pottery were collected from four contexts. Two pieces are grog-tempered (GROG), one, a jar sherd that is unstratified (0001) and the other a bodysherd from ditch 0045 (0085). Both belong to the first half of the 1st century AD. A tiny sandy greyware (GX) bodysherd was collected from ditch 0042 (0106) and is Roman but not closely datable. A Hadham redware (HAX) wall sherd trimmed round (c. 40mm dia.) with a hole (6mm) drilled in the centre for possible use as a counter was found in ditch 0021 (0193). The Hadham fabric is late 3rd or 4th century but the date of the sherd's re-use is not known.

### **4.3. Miscellaneous**

#### *4.3.1. Fired clay*

Fired clay fragments were collected from two features both of which were dated to the early Iron Age. The fills of pit 0134 produced three fragments (22g) in a sandy fabric with common voids and ferric inclusions (fill 0136) and five fragments (29g) in a chalky fabric with buff-orange exterior and greyish interior (0137). One piece from fill 0136 has a flattened surface and may be daub. Ditch 0199 (0200) produced one abraded fragment (6g) in an orange sandy fabric with natural flint inclusions.

#### *4.3.2. Flint*

Sarah Bates

A total of 61 struck flints were recovered from the site. The flint varies in colour from dark to pale grey with some having a slightly brownish mottled appearance. Much of the material from the site has a slight bluish white patchy patina (which may be due to chalky conditions at the site?). Cortex, where present, includes a chalky white cortex, a dirty cream-coloured one and a thinner white patinated surface. The assemblage is summarised in Table 8 and the complete catalogue by context is shown in Appendix 4.

Type	No.
multi platform blade core	1
single flake	1
flake	45
blade-like flake	4
shatter	1
end scraper	1
scraper	1
retouched ovate flake	1
retb	1
retf	2
utilised flake	3
<b>Total</b>	<b>61</b>

Table 8. Summary of flint types.

Two very small and quite neat cores were found. There is a neatly used flake core (0081) and a multi platform core which has produced squat blade-like pieces (0137).

The assemblage consists mainly of unmodified flakes. Many of these are quite small and they are often squat and sometimes broad in shape. Three pieces are classified as blade-like. Some pieces are quite jagged in nature. A small number of flakes have cortical platforms and none have abrasion of their platforms. It seems there was, in the most part, little in the way of core preparation. In one instance (0137), three small flakes, two of them blade-like, seem to have come from the same core – they have a distinctive colour and patina and are a similar size – both to each other and to the small blade-type core which came from the same deposit.

Two scrapers were found. One is on a thin ‘teardrop’-shaped soft hammer struck flake which has an abraded platform. It has minimal retouch around its rounded distal end (0085). The other is an irregular thick flake with one end retouched.

An ovate cortical flake has shallow flaking of both ends on its dorsal face. On its ventral face, much of both sides as well as the ends are also retouched (0001).

A retouched blade, two retouched flakes and three utilised flakes are also present.

## Flint by context

### Bronze Age

Three flakes, a shatter piece and a scraper came from pit 0174. The debitage is all quite sharp. These are hard hammer struck pieces, generally irregular and squat. The scraper is on an irregular thick flake. The fact that the flint is quite sharp suggests that it lies *in situ* and could possibly be contemporary with the pit. Some pottery of Bronze Age date came from the feature.

### Iron Age

A squat, quite thick flake was found in pit 0023. It could be contemporary with the Earlier Iron Age pottery from the feature.

Two sharp flakes and a fragment of burnt flint came from ditch 0067 (which also contained pottery of earlier Iron Age date) in an evaluation trench to the east of the main site.

Twenty-two flints came from pit 0134 (0133?). They include a multi platform core which has produced small blades or blade-like flakes. There are also twenty-one flakes, three of them blade-like. About half of the flakes are quite irregular and jagged while some neater pieces, including the blade-like flakes are generally small and squat. The material is all quite sharp and



the size and colour of three of the flakes suggest that they have been struck from the core. Earlier Iron Age pottery also came from the pit.

Three flakes, one of them utilised, came from pit 0170 along with some sherds of pottery of earlier Iron Age date. All the pieces are small and squat.

A small thick irregular flake came from ditch 0059. A few sherds of earlier Iron Age pottery came from this ditch but it is uncertain as to whether or not that might have been residual.

#### *Flints from parallel linear ditches*

Nine flints came from ditch 0045. They include eight flakes one of which may be part of a thin blade-type piece. There is also an end scraper which is on a thin and slightly curving flake with an abraded platform and is likely to date to the earlier Neolithic period. It seems likely to be residual in this ditch. Most of the flint from this ditch is slightly edge damaged.

Six flakes and an utilised flake were found in ditch 0039. Most of the flakes are squat or broad in shape. One blade-like piece has a cortical platform. Four flakes are quite sharp, the rest of the flint is edge damaged to a degree.

A small neat core and a flake came from ditch 0065.

Two flakes, one of them quite thick, the other utilised, came from ditch 0033.

Two broad irregular flakes came from ditch 0047.

A retouched flake came from ditch 0021. Both its edges are retouched at its broad distal point.

The date of these ditches is unknown by the writer although Iron Age pottery came from at least one of them. The flint includes edge damaged pieces and probably dates to more than one period and includes some residual material. Some of the sharp and more irregular pieces could, however, be contemporary with the Iron Age pottery.

#### *Flint from undated contexts*

A retouched blade came from pit 0194. It is a fairly large neat piece with an abraded platform and slightly retouched (or utilised) distal point.

One flake was found in pit 0165.

The retouched ovate flake and another retouched flake were from unstratified contexts.

### **Discussion**

The flint appears to represent activity in the vicinity of the site during more than one period. One piece in particular, an end scraper, is likely to date to the earlier Neolithic period while much of the rest of the material probably dates to a later period (later Neolithic to Iron Age). The sharpness of some of the flint suggests that it could have been deposited while quite fresh and, therefore, be contemporary with the excavated features which appear to date mainly from the earlier Iron Age. The discovery of several flakes which appear to have come from a core from the same pit, also suggests the contemporaneity of the flint with that feature. Flint use during the Iron Age has been a subject of some controversy (Saville 1981) but, increasingly, evidence is being recorded from excavated sites and some of the material from the present site is not inconsistent in nature with that considered elsewhere as likely to be of this relatively late date (Young and Humphrey 1999).

### 4.3.3. *Burnt flint and stone*

Burnt flint and stone was collected from three features. There were small amounts of burnt flint from pits 0134 (4 fragments, 55g) and 0174 (1 fragment, 20g). Twenty-nine small fragments (68g) of burnt stone were collected from pit 0134/0139 (0185) and four fragments (223g) from pit 0174 (0185).

### 4.3.4. *Coin* (identified by Faye Minter)

A Roman *sestertius* (SF 1000) was recovered from the topsoil. The coin, which could date from the mid 1st to later 3rd century, is in very poor condition.

## 4.4. Biological evidence

### 4.4.1. *Animal bone*

One hundred and thirty-three fragments of animal bone weighing 746g were collected from ten contexts in six features, two ditches and four pits. The bone is in poor condition and fragmented and it is not surprising that the assemblage contains a high number of teeth since they survive the longest. The teeth are mainly from cattle but a pig jaw and teeth was also identified. Medium and large mammal long bones were also present.

Animal bone was found in association with Bronze Age pottery in pit 0174 and with Early Iron Age pottery in ditches 0067 and 0059 and pits 0134, 0170 and 0194. The group is too small and poorly preserved for any conclusions regarding its composition to be made, but it probably represents the remains of food waste from domestic activity in the area.

### 4.4.2. *Plant macrofossils*

Val Fryer

#### **Introduction and method statement**

Samples for the retrieval of the plant macrofossil assemblages were taken from across the excavated area, and twenty were submitted for assessment. Of these, four contained no flot after processing.

Twenty litre sub-samples from each context were processed by manual water flotation/washover, and the flots were collected in a 500 micron mesh sieve. The dried flots were scanned under a binocular microscope at magnifications up to x 16, and the plant macrofossils and other remains noted are listed on Tables 9a and 9b. Nomenclature within the tables follows Stace (1997). All plant remains were charred. Modern contaminants including fibrous roots and seeds were present throughout.

The non-floating residues were collected in a 1mm mesh sieve and sorted when dry. Any artefacts/ecofacts were retained for further specialist analysis.

OP No.	0024	0068	0091	0095	0124	0136	0137	0147
Feature No.	0025	0069	0039	0065	0059	0134	0134	0134
Feature type	Pit/ph	Ditch	Ditch	Ditch	Ditch	Pit	Pit	Pit
Date	E/MIA	IA	?Preh	U/D	IA	IA	IA	IA
<b>Plant macrofossils</b>								
<i>Secale cereale</i> L. (grain)						xcf		
<i>Triticum</i> sp. (grains)				xcf				
<i>T. spelta</i> L. (glume base)				x				
Cereal indet. (grains)						x	x	x
<i>Galium aparine</i> L.						x		
<i>Corylus avellana</i> L.	x							
Charcoal <2mm	xx	x	x	x	x	xxxx	x	x
Charcoal >2mm	x			x		xx	x	x
Charred root/stem		x	x					
<b>Other materials</b>								
Black porous 'cokey' material	x	x				x	x	
Black tarry material				x		x		
Bone						x xb		
Burnt/fired clay		xx					x	x
Ferrimanganiferous concretions		xx	x					
?Pumice/vitrified material						x		
Small coal frags.	x		x	x		x		x
<b>Sample volume (litres)</b>	<b>20ss</b>	<b>20ss</b>	<b>20ss</b>	<b>20ss</b>	<b>20ss</b>	<b>20ss</b>	<b>20ss</b>	<b>20ss</b>
<b>Volume of flot (litres)</b>	<b>&lt;0.1</b>	<b>&lt;0.1</b>	<b>&lt;0.1</b>	<b>&lt;0.1</b>	<b>&lt;0.1</b>	<b>0.1</b>	<b>&lt;0.1</b>	<b>&lt;0.1</b>
<b>% flot sorted</b>	<b>100%</b>	<b>100%</b>	<b>100%</b>	<b>100%</b>	<b>100%</b>	<b>100%</b>	<b>100%</b>	<b>100%</b>

Table 9a. Plant macrofossils and other remains.

OP No.	0146	0149	0162	0166	0175	0184	0195	0197	0207
Feature No.	0050	0061	0033	0165	0174	0174	0194	0196	0203
Feature type	Ditch	Ditch	Ditch	Pit	Pit	Pit	Pit	Pit	Pond
Date	U/D	U/D	U/D	?BA	BA	BA	IA	IA	U/D
<i>Plant macrofossils</i>									
Cereal indet. (grains)		xfg				xfg			
<i>Vicia/Lathyrus</i> sp.					x				
<i>Corylus avellana</i> L.					x				
Charcoal <2mm	x	x	x	x	xxxx	xxxx	x	x	x
Charcoal >2mm					x	x	x		
Charred root/stem						x			
<b>Other materials</b>									
Black porous 'cokey' material	x				x		x		
Black tarry material		x		x			x		
Bone					x	x xb			
Burnt/fired clay						x			
Small coal frags.							x	x	
<b>Sample volume (litres)</b>	<b>20ss</b>	<b>20ss</b>	<b>20ss</b>	<b>20ss</b>	<b>20ss</b>	<b>20ss</b>	<b>20ss</b>	<b>20ss</b>	<b>20ss</b>
<b>Volume of flot (litres)</b>	<b>&lt;0.1</b>	<b>&lt;0.1</b>	<b>&lt;0.1</b>	<b>&lt;0.1</b>	<b>&lt;0.1</b>	<b>&lt;0.1</b>	<b>&lt;0.1</b>	<b>&lt;0.1</b>	<b>&lt;0.1</b>
<b>% flot sorted</b>	<b>100%</b>	<b>100%</b>	<b>100%</b>	<b>100%</b>	<b>100%</b>	<b>100%</b>	<b>100%</b>	<b>100%</b>	<b>100%</b>

Table 9b. Plant macrofossils and other remains cont.

Key to Tables 8a and 8b: x = 1–10 specimens; xx = 10–100 specimens; xxxx 100+ specimens; cf = compare; b = burnt; ss = sub-sample; fg = fragment; ph = post-hole; U/D = undated; E/MIA = Early/Middle Iron Age; IA = Iron Age; Preh. = Prehistoric; BA = Bronze Age

## Results

With the exception of three samples, which contained a higher density of small charcoal/charred wood fragments, plant remains were exceedingly scarce within the assemblages. Preservation was very poor, with the few remains recorded (including the charcoal) being abraded and

fragmented. Much of the charred plant material, particularly the charcoal fragments, was also extensively coated with mineral concretions.

Cereal grains were noted as single specimens in six of the assemblages, but most could not be closely identified. A possible wheat (*Triticum* sp.) grain was noted from context 0095 along with a spelt wheat (*T. spelta*) glume base, and a fragmentary rye (*Secale cereale*) type grain was recovered from context 0136. Only two weed seeds were recorded, a goosegrass (*Galium* sp.) fruit from context 0136 and a vetch/vetchling (*Vicia/Lathyrus* sp.) seed from context 0175. Individual hazel (*Corylus avellana*) nutshell fragments were noted from contexts 0024 and 0175.

Other materials were also very scarce within the assemblages. The pieces of black porous and tarry material were probable residues of the combustion of organic materials at very high temperatures. The small coal fragments noted within seven of the contexts are probably derived from the recent agricultural practise of steam ploughing.

Although specific sieving for molluscan remains was not undertaken, shells were recorded within six of the assemblages studied (not tabulated). However, most retained excellent surface detail and were almost certainly intrusive within the contexts, possibly as a result of recent root disturbance. Both terrestrial and freshwater obligate species were identified indicating that some contexts (most particularly pits 0194 and 0196) had contained standing water at some point.

## Conclusions

Although pits 0134 and 0174 may contain minute quantities of hearth/domestic waste (including charcoal/charred wood, cereals, nutshell and burnt bone), the remaining assemblages are so insubstantial that they are almost certainly derived from scattered or wind-blown detritus which accidentally became incorporated within the feature fills. There is nothing to indicate that the features were situated close to any main centre of domestic or agricultural activity during either the Bronze Age or Iron Age periods.

As none of the assemblages contain sufficient material for quantification (i.e. 100+ specimens), no further analysis is recommended. It is also highly unlikely that any of the samples contain material suitable for dating purposes, as there are insufficient grains/nutshell fragments for an AMS determination and the charcoal fragments are small and mineral encrusted.

### 4.4.3. Shell

A *cepea nemoralis* shell was collected from ditch 0059 (0173).

## 4.5. Discussion of the finds and environmental evidence

The finds assemblage is mainly prehistoric with just a few sherds of Roman pottery present.

The pottery assemblage includes a small amount of Bronze Age material but is mainly early Iron Age and has a decorative style broadly contemporary to Darmsden. It is similar and probably contemporary to the pottery from Drovers Went (BSE 199) which dated to the fifth century BC.

The flint assemblage contains material from several periods. The earliest is dated to the earlier Neolithic but much of it is later, later Neolithic to Iron Age. The 'fresh' condition of some of the flint suggests that it is contemporary with the associated pottery which dates features to the early Iron Age. This is of interest because it provides more evidence of the relatively late use of flint

during the Iron Age.

Plant remains were scarce within the macrofossil assemblages and preservation was very poor. None of the assemblages contain sufficient material for quantification or dating. There is nothing to indicate that the features sampled were located close to any main centre of domestic or agricultural activity during either the Bronze Age or Iron Age periods.

Later finds are negligible. Roman pottery consists of single finds in four features and a coin from the topsoil and does not indicate intense activity on this site during the Roman Period.



## 5. Discussion

The natural subsoil and level of archaeological deposits lay at a depth of c.0.3m-0.4m, sealed immediately below a modern ploughsoil. The site has been open farmland since at least the 19th century, as shown on the First Edition Ordnance Survey of the 1880's (Craven 2006 Fig 2), and it is likely that the archaeological levels have been truncated to an unknown extent by post-medieval and modern agricultural activity.

The excavation identified two distinct, although insubstantial, phases of activity in the prehistoric period. Two isolated pits were identified containing Bronze Age material, followed by a phase of Early Iron Age pits and a single ditch. This is further evidence of a wide ranging spread of low-level prehistoric activity in the general vicinity, as already seen at sites such as HVH 001 and HVH 019.

Many of the features dating to the Bronze and Iron Age periods were quite substantial, perhaps a further indication of possible truncation to the site removing smaller or shallower features that may once have existed. While the Early Iron Age phase of occupation was mainly represented by large pits, often with sizeable quantities of pottery sherds from partially complete vessels, indicating a possible focus for domestic settlement activity, there was no indication of smaller features such as postholes indicating possible structures. The majority of the pits lay in close proximity to the course of ditch 0026/0059, the only feature to suggest any land division or management, but is not possible to establish any further focus for, or layout of, potential settlement.

The assemblage of Early Iron Age pottery has similarities with material from other rural Suffolk and Norfolk sites such as BSE 199, Drovers Went, Bury St Edmunds (Percival 2004), which dates to the fifth century BC, Barham, Suffolk (Martin 1992) or West Harling, Norfolk, which dates to the 6th century BC (Clark and Fell 1953).

The sizeable pottery sherds within pits such as 0023 and the partially-complete vessel within 0170 suggest that deposition occurred in close proximity to a focus of domestic activity. Other artefactual evidence however was limited; the animal bone assemblage, in poor condition, indicated the presence of food waste from domestic activity but the environmental sampling results were poor, showing no sign of nearby settlement or agricultural throughout the Bronze and Iron Age periods.

There is no firm indication of any phase of activity on the site between the prehistoric period and post-medieval periods, with only scarce traces of redeposited Roman material being collected. The series of eleven parallel ditches, although not firmly datable due to the likelihood of the finds material being redeposited, are thought to be of a relatively recent post-medieval date. This is due to their uniform regularity, possibly even meaning that they were originally excavated by machine. It is thought that their function was associated with the later agricultural land-use of the site.

## 6. Conclusions and recommendations

The excavation has identified scattered evidence of activity in the Bronze and Iron Age periods. Following on from two isolated Bronze Age pits a low-density spread of pits and a single ditch indicate a focus for domestic or agricultural activity in the early Iron Age period. It is thought likely that less substantial deposits relating to this period of occupation may have been lost to truncation caused by post-medieval or modern agricultural practices. A later phase of post-medieval ditches, thought to relate to agricultural landuse, were identified running in parallel across the majority of the site.

The prehistoric features form part of a wider pattern of scattered prehistoric activity that has been identified elsewhere in the vicinity but do not, by themselves offer scope for further research. The Early Iron Age archaeological deposits indicate rural settlement but there is no further possible analysis to be made in respect of priority aims in the Regional Research Framework (Brown and Glazebrook 2000, p16-17) such as establishing the form and function of any settlement, or development of the associated agrarian economy. The faunal assemblage was limited and in poor condition, likewise the environmental sampling results were of limited success, with no firm indication of domestic or agricultural deposits.

The pottery assemblage is comparable with those from other sites in the region but is not thought to be of sufficient size or importance to justify further analysis. With no possibility for obtaining radio-carbon dates due to the poor environmental sampling results it is also not possible to establish any absolute dates for the Iron Age pottery assemblage, another priority in the Regional Research Framework.

The pottery assemblage however may be of use, and examined further, in any future synthesis of regional material to establish pottery typology sequences for the period.

J.A. Craven  
Project Officer  
Field Team, Suffolk County Council Archaeological Service  
December 2007

## References

- Barrett, J.C., 1978. 'The EPRIA Prehistoric Pottery' in Hedges J., and Buckley, D., 'Excavations at a Neolithic Causewayed Enclosure, Orsett, Essex. 1975' *Proceedings of the Prehistoric Society* 44, 268-288.
- Barrett, J.C., 1980. 'The Pottery of the Later Bronze Age in Lowland England', *Proceedings of the Prehistoric Society* 46, 297-320.
- Brown, N. & Glazebrook, J., 2006. *Research and Archaeology: A Framework for the Eastern Counties*. 2. *Research agenda and strategy*. East Anglian Archaeology Occasional Paper no.8.
- Chadwick, P. & Dicks, S., 2004. *Archaeological Desk Based Assessment, Land off Chalkstone Way, Haverhill, Suffolk*. CgMs Consulting report.
- Cleal R.M.J., 1995. 'Pottery fabrics in Wessex in the fourth to second millennia BC' in 'Unbaked Urns of Rudely Shape' *Essays on British and Irish Pottery for Ian Longworth*. Oxbow Monograph 55, (Oxford).
- Craven, J. A., 2006. *Land off Chalkstone Way, Haverhill, HVH 059*. SCCAS Report No. 2006/67.
- Cunliffe, B.W. 2005. *Iron Age Communities in Britain*. London. Routledge.
- Martin, E. 1992. 'Two first millennium B.C. settlement sites at Barham' in Martin E. *Settlements on Hill-Tops: Seven Prehistoric Sites in Suffolk*. East Anglian Archaeology 65. Suffolk County Planning Department.
- Percival, S., 2000. 'The Pottery' in Ashwin, T. and Bates, S., *Excavations on the Norwich Southern Bypass, 1989-91. Part I: Excavations at Bixley, Caistor St. Edmund and Trowse*. East Anglian Archaeology 91, Part I.
- Percival, S., 2004. 'The Prehistoric Pottery' in Duffy, J. *Drovers Went, Moreton Hall, Bury St Edmunds BSE 199*, A Report On The Archaeological Excavations, 2002, SCCAS Report No. 2004-15.
- Prehistoric Ceramic Research Group 1992 (1997) *Guidelines for Analysis and Publication*. PCRG Occasional Paper 2. Revised 1997.
- Saville, A., 1981 Iron Age flint working – fact or fiction?, *Lithics* 2, 6-9.
- Stace, C., 1997. *New Flora of the British Isles*. Second edition. Cambridge University Press.
- Young, R. & Humphrey J., 1999. Flint Use in England after the Bronze Age: Time for a Re-evaluation?, *Proc. Prehist. Soc* 65, 231-242.

## Appendix 1. Context list

context	feature	trench	ditch seg	group no	identifier	description	cuts	cutby	over	under	spotdate
0001	0001			0001	Unstratified finds	Unstratified finds					
0002	0002	01		0002	Ditch cut	SE-NW running ditch in trench 01 at western end visible for approx. 10m before it runs beyond the NE trench edge. Moderate sloping sides, concave base. Width increases from 0.4m to 0.6m to east.					
0003	0002	01	0003	0002	Ditch Section	0.45m wide section through ditch 0002 near western end of trench 1					
0004	0002	01	0003	0002	Ditch fill	Fill of ditch 0002 in section 0003. Light brown clay with white chalk lumps and flecks. No finds					
0005	0002	01	0005	0002	Ditch section	Section through ditch 0002 east of section 0003.					
0006	0002	01	0005	0002	Ditch fill	Fill of ditch 0002 within section 0005. Light brown clay with chalk lumps and flecks. Small frags of pottery found in this section.					preh
0007	0007	01		0007	Ditch cut	Possible SE-NW running ditch in trench 01. Running along north eastern edge of tr1 (full width not visible) for approx. 20m. Runs under NE edge of trench 7m from eastern end of Tr1. Excavated in section 0012					
0008	0076	01	0008	0076	Section	0.3m wide section through spread 0076 at western edge					
0009	0076	01	0008	0076	Fill	Fill of 0076 in section 0008. Mid brown clay with chalk lumps and flecks. Moderately sloping sides and base					
0010	0077	01	0010	0077	Section	0.3m wide section through probable hollow 0077 at mid point in trench					
0011	0077	01	0010	0077	Hollow fill	Fill of 0077 within section 0010. Mid brown clay with chalk lumps and flecks					
0012	0007	01	0012	0007	Ditch section	Section 0.5m wide at eastern end of ditch 0007 in trench 01. Moderate to steep sloping sides, flat base (partially visible)					
0013	0007	01	0012	0007	Ditch fill	Fill of ditch 0007 within section 0012. Mid to dark brown clay, occasional chalk flecks. 1 pot sherd found					preh
0014	0014	01			Posthole cut	Small rounded pit/ posthole at eastern end of trench 01. Deeper on southern side and edge steeper, base concave. 0.4m diameter and 0.14m deep.					
0015	0014	01			Posthole fill	Fill of 0014. Dark brown clay					
0016		01			Trench Profile	Trench profile in Tr1: Eastern end					
0017		01			Trench Profile	Trench profile in Tr1: Middle					
0018		01			Trench Profile	Trench profile in Tr1: Western end					

context	feature	trench	ditch seg	group no	identifier	description	cuts	cutby	over	under	spotdate
0019	0076	01	0019	0076	Section	Section of probable shallow hollow 0076.					
0020	0076	01	0019	0076	Fill	Fill of 0076. Light brown clay with chalk flecks					
0021	0021	04		0021	Ditch cut	Cut of NE-SW running ditch at southern end of Tr4, 0.6m wide and 0.2m deep. 1.2m length excavated. Moderate sloping sides base concave.		0023			
0022	0021	04		0021	Ditch fill	Fill of ditch 0021. Light-mid brown clay. Numerous snail shell inclusions and chalk flecks					BA or IA
0023	0023	04		0023	Pit cut	Cut of posthole with 2 fills. Half pear shape in plan. Shallow on SW side to a deeper post pipe/hole on NE side. Located on trench edge and later fully exposed and 100% excavated. 2nd half excavated in 2 stages showing pottery 0063	0021				
0024	0023	04		0023	Pit fill	2° fill of posthole 0023. Dark- mid brown/ grey mottled clay. Moderate chalk flecks and moderate flint inclusion. Mottled with orange iron panning. Pot and bone found. Base of pot visible in section and later taken out (numbered 0063).					BA or IA
0025	0023	04		0023	Pit fill	Primary fill of posthole 0023. Light pale creamy orange/ brown clay.					IA
0026	0026	04		0026	Ditch cut	N-S ditch, 100% excavated within trench. Measured 0.8m wide and 0.3m deep with moderate sloping sides and a concave base.					
0027	0026	04		0026	Ditch fill	Light brown clay with occasional stones and chalk inclusions.					IA
0028	0028	04		0028	Pit cut	Possible pit or natural hollow measuring c.5m long and 0.8m+ wide and 0.35m deep. Two sections excavated, one recorded.					
0029	0028	04		0028	Pit fill	Mid grey/brown silty clay with gravel and chalk. Waterlogged					
0030	0030	05		0030	Ditch cut	Ditch, aligned SW-NE and measuring 0.6m wide and 0.09m deep with steep sides and a flat base.					
0078	0042	05	0043	0042	Ditch fill	Mid brown clay and chalk.					
0031	0030	05	0031	0030	Ditch section	Section of ditch 0030.					
0032	0030	05	0031	0030	Ditch fill	Mid brown clay with chalk.					
0033	0033	05		0033	Ditch cut	Ditch, aligned SW-NE and measuring 0.43m wide and 0.1m deep with steep sides and a flat base.					
0034	0033	05	0034	0033	Ditch section	Section of ditch 0033.					
0035	0033	05	0034	0033	Ditch fill	Mid brown clay with chalk.					
0036	0036	05		0036	Pit cut	Irregular pit seen half in trench. 1.3m long and 0.25m deep with steep sides and a flat base.					
0037	0036	05		0036	Pit fill	Lower, primary, fill of pit 0036. Mid grey/brown clay with orange mottling and charcoal flecks.					0038
0038	0036	05		0036	Pit fill	Upper fill of pit 0036. Mid grey/brown clay with orange mottling and charcoal flecks.				0037	



context	feature	trench	ditch seg	group no	identifier	description	cuts	cutby	over	under	spotdate
0039	0039	05		0039	Ditch cut	Ditch, aligned SW-NE and measuring 0.56m wide and 0.21m deep with steep sides and a flat base.					
0040	0039	05	0040	0039	Ditch section	Section of ditch 0039.					
0041	0039	05	0040	0039	Ditch fill	Light yellow/brown clay and chalk flecks.					L. preh
0042	0042	05		0042	Ditch cut	Ditch, aligned SW-NE and measuring 0.65m wide and 0.20m deep with steep sides and a flat base.					
0043	0042	05	0043	0042	Ditch section	Section of ditch 0042.					
0044	0045	06	0044	0045	Ditch section	Section of ditch 0045.					IA
0045	0045	06		0045	Ditch cut	Ditch, aligned SW-NE and measuring 0.65m wide and 0.26m deep with steep sides and a flat base.					
0046	0045	06	0044	0046	Ditch fill	Mid-light brown clay with chalk and charcoal flecks.					IA
0047	0047	07		0047	Ditch cut	Ditch, aligned SW-NE and measuring 0.34m wide and 0.13m deep with steep sides and a concave base. SW part of ditch was overmachined.					
0048	0047	07	0049	0047	Ditch fill	Mid brown clay.					
0049	0047	07	0049	0047	Ditch section	Section of ditch 0047.					
0050	0050	07		0050	Ditch cut	Ditch, aligned SW-NE and measuring 0.60m wide and 0.17m deep with steep sides and a flat base.					
0051	0050	07	0052	0050	Ditch fill	Mid brown clay and occasional chalk flecks.					
0052	0050	07	0052	0050	Ditch section	Section of ditch 0050.					
0053	0053	07		0053	Ditch cut	Ditch, aligned SW-NE and measuring 0.33m wide and 0.11m deep with moderate sloping sides and a concave base.					
0054	0053	07	0055	0053	Ditch fill	Mid brown clay sand.					
0055	0053	07	0055	0053	Ditch section	Section of ditch 0053.					
0056	0023	04	0056	0023	Pit section	Partial section across north half of pit 0023, excavated after trench extended to expose whole feature, showing relationship with ditch 0021.					
0057	0057	06		0057	Pit cut	Irregular circular pit, c.50% under baulk, with a bowl shaped profile, measuring 0.8m wide and 0.4m deep. Possibly natural.					
0058	0057	06		0057	Pit fill	Mid brown clay with chalk flecks. Occasional charcoal flecks towards base					
0059	0059	06		0059	Ditch cut	Ditch, aligned N-S, measuring 0.6m wide and 0.11m deep. Joins ditch 0061 but relationship unclear. Not drawn. Real feature?					

context	feature	trench	ditch seg	group no	identifier	description	cuts	cutby	over	under	spotdate
0060	0059	06		0059	Ditch fill	Mid orange/brown clay.					
0061	0061	06		0061	Ditch cut	Ditch, aligned SW-NE, measuring 0.5m wide and 0.05m deep with shallow sides and a flat base. Joins ditch 0059 but relationship unclear. Not drawn.					
0062	0061	06		0061	Ditch fill	Mid orange/brown clay.					
0063	0023	04		0023	Finds	Number issued to upside down base of vessel lying near base of pit plus other large sherds lying adjacent. Contained within fill 0024.					E-MIA
0064	0065	06	0064	0065	Ditch section	Section of ditch 0065.					
0065	0065	06		0065	Ditch cut	Ditch, aligned SW-NE and measuring 0.8m wide and 0.3m deep with steep sides and a flat base.					
0066	0065	06	0064	0065	Ditch fill	Light cream/brown clay with occasional chalk and charcoal flecks.					
0067	0067	11		0067	Ditch cut	Probable butt end of a SW-NE aligned ditch. Measured 0.8m wide and 0.28m deep with steep sloping sides and a concave base.					
0068	0067	11	0069	0067	Ditch fill	Mixed mid brown/grey clay with frequent charcoal flecks.					IA
0069	0067	11	0069	0067	Ditch section	Section of ditch 0067.					
0070	0070	10		0070	Ditch cut	Ditch, aligned SW-NE and measuring 0.70m wide and 0.38m deep with steep sides and a flat base.					
0071	0070	10	0072	0070	Ditch fill	Mid brown clay and occasional chalk flecks.					
0072	0070	10	0072	0070	Ditch section	Section of ditch 0070.					
0073	0074	12	0073	0074	Ditch section	Section of ditch 0074.					
0074	0074	12		0074	Ditch cut	Ditch, aligned SW-NE and measuring 0.50m wide and 0.15m deep with vertical sides and a flat base.					
0075	0074	12	0073	0074	Ditch fill	Light brown clay.					preh
0076	0076	01		0076	Hollow	Probable hollow - see sections 0008 and 0019.					
0077	0077	01		0077	Hollow	Probable hollow - see section 0010.					
0079	0208			0208	Pit fill	Fill of pit [0208]. Mid brown/orange/grey clay with occasional charcoal flecks. No finds. 50% excavated, using trowel. Machined.					
0080	0065		0080	0065	Section	Segment of ditch [0065]. Segment is the one closest to NW edge of site taken from this ditch. Moderately-sloping, uneven sides with rounded, uneven base. Cut hard to distinguish. NW section recorded. 0.6m wide NE-SW. 0.16m deep. Level taken by TST. Digital photo taken.					

context	feature	trench	ditch seg	group no	identifier	description	cuts	cutby	over	under	spotdate
0081	0065		0080	0065	Ditch fill	Fill of [0065] in segment 0080. Orange-brown, highly compacted clay with occasional chalk and stones. Hard to distinguish from natural. Two pieces of worked flint found. Excavated using trowel, shovel and mattock. Machined.					
0082	0118		0082	0118	Ditch section	Segment of [0118]. Shallow ditch with flat, chalk base. 0.55m wide NW-SE, 1.6m long SW-NE, 0.14m deep. 100% excavated segment, using trowel. Photographed.					
0083	0118		0082	0118	Ditch fill	Fill of [0118] in segment 0082. Fill is mid-brown/orange clay. No finds. 0.14m deep. 100% excavated in segment, using trowel. Machined.					
0084	0045		0084	0045	Ditch section	Segment through ditch [0045] near north end of site. Moderate sloping sides (50°), concave base. Irregular in places. 1.5m segment. 0.9m wide, 0.27 m deep. Photographed.					
0085	0045		0084	0045	Ditch fill	Fill of ditch [0045] in segment 0084. Mid-light pale brown clay fill with occasional chalk and charcoal flecks. Flint and pot found. 100% of segment excavated, using trowel and shovel.					
0086	0039		0086	0039	Ditch section	Segment of ditch [0039]. 1.5m long. Convex sloping sides at 45°, with convex base. 0.8m wide, 0.3m deep. Fairly uniform in cut. Photographed.					
0087	0039		0086	0039	Ditch fill	Fill of ditch [0039] in segment 0086. Mid-light pale brown clay fill with occasional dark flecks & moderate amounts of flint. 100% of segment excavated, using trowel.					
0088	0118		0088	0118	Ditch section	Segment of ditch [0118]. Flat-based, steep-sided ditch with chalk/clay base. 0082= segment of the same ditch. 0.54m wide SE-NW, 1.8m long segment NE-SW, 0.12m deep. Photographed.					
0089	0118		0088	0118	Ditch fill	Fill of ditch [0118] in segment 0088. Mid brown/orange clay fill. No finds. 100% of segment excavated, using trowel. 3 buckets of environmental sample taken.					
0090	0039		0090	0039	Ditch section	Segment of ditch [0039]. South of segment 0086. 1.5m segment excavated. Bowl-shaped cut with concave sides and base. Sides slope 50-60°. 0.65m wide, 0.24m deep. Photographed.					
0091	0039		0090	0039	Ditch fill	Fill of ditch [0039] in segment 0090. Mid-light pale brown clay with moderate chalk flecks and occasional flints. 3 buckets of samples taken. 100% of segment excavated, using trowel.					
0092	0042		0092	0042	Ditch section	Segment through ditch [0042]. Runs SW-NE. 0.8 m wide NW-SE, 1.9m long segment NE-SW, 0.28m deep. Photographed.					
0093	0042		0092	0042	Ditch fill	Fill of ditch [0042] in segment 0092. Mid orange-brown clay with occasional stones and chalk flecks. 3 bucket sample taken.					
0094	0065		0094	0065	Ditch section	1.5m long segment of NE-SW ditch [0065]. Bowl-shaped in profile. Linear in plan. Concave base and sides, sides slope 45°. Photographed.					
0095	0065		0094	0065	Ditch fill	Fill of ditch [0065] in segment 0094. Mid-light brown pale clay with few charcoal inclusions and moderate flint and chalk. No finds. 3 buckets of sample taken.					
0096	0045		0096	0045	Ditch section	Segment through shallow ditch [0045] that runs NW-SE. Feature is so shallow that it is impossible to get true idea of the cut. Clay is also so hard and mixed that the cut becomes even more confused during excavation. Fill- 0097. Level taken by TST. Digital photograph. Interpretation- post-medieval drainage ditch.					

context	feature	trench	ditch seg	group no	identifier	description	cuts	cutby	over	under	spotdate
0097	0045		0096	0045	Ditch fill	Fill of ditch [0045] in segment 0096. Grey-brown mixed clay. Chalk lumps. Highly compacted. Contained one (redeposited?) flint flake. Hard to tell if mixed. Excavated using trowel, mattock, fork and shovel.					
0098	0045 0059		0098		Ditch section	Segment through ditches [0045] and [0059]. No relationship visible in sections. See context sheet for which sections were recorded. Interpretation- [0045] appeared to cut [0059] on the surface, though this cannot be confirmed. Photographed.					
0099	0045		0098	0045	Ditch fill	Fill of ditch [0045] in segment 0098. Mid brown chalky-clay. Identical to fill (0100) of ditch [0059] in same segment. Machined. 100% excavated, using trowel.					
0100	0059		0098	0059	Ditch fill	Fill of ditch [0059] in segment 0098. Mid brown chalky-clay. Identical to fill (0099) of ditch [0045] in same segment. Machined. 100% excavated, using trowel.					
0101	0118		0101	0118	Ditch section	Segment through NE-SW ditch [0118]. Shallow-sloping sides, rounded base. Fill- (0102). 0.67m wide, 1.26 m segment, 0.2m deep. Level taken by TST. Digital photograph.					
0102	0118		0101	0118	Ditch fill	Fill of ditch [0118] in segment 0101. Grey-brown highly compacted clay with chalk. No finds. 100% excavated in segment, using trowel, shovel, mattock and fork.					
0103	0039		0103	0039	Ditch section	Segment through NE-SW ditch [0039]. Shallow-sloping sides, rounded base. Fill- 0104. Interpretation- post-medieval drainage ditch. 0.59m wide, 1.23m long excavated segment, 0.12m deep. Level taken by TST. Digital photograph.					
0104	0039		0103	0039	Ditch fill	Fill of ditch [0039] in segment 0103. Highly compacted grey-brown clay with chalk and stones. No finds. 100% excavated segment using trowel, shovel, mattock and fork. Machined.					
0105	0042		0105	0042	Ditch section	Segment of ditch [0042]. Shallow ditch with steep sides and a nearly flat base. Sides slope 65-70°. 0.1m wide SW-NE, 1.5m long segment, 0.12m deep. Photographed. Fill- 0106.					
0106	0042		0105	0042	Ditch fill	Fill of ditch [0042] in segment 0105. Mid-light pale brown clay with occasional chalk flecks, flint and charcoal. Roman pot found. 100% of segment excavated, using trowel.					
0107	0033		0107	0033	Ditch section	Segment through ditch [0033]. Bowl-shaped with concave base and edges. Edges slope 60° to base. Fill- 0108. 0.5m wide NW-SE, 1.5m long segment, 0.24m deep. Photographed.					
0108	0033		0107	0033	Ditch fill	Fill of ditch [0033] in segment 0107. Mid-light pale brown clay with occasional chalk inclusions. 100% of segment excavated, using trowel.					
0109	0047		0109	0047	Ditch section	Segment through ditch [0047]. Linear, with concave base which remains regular all along the segment. Fill- 0110. 0.65m wide NW-SE, 1.85m long segment NE-SW, 0.17m deep. Photographed.					
0110	0047		0109	0047	Ditch fill	Fill of ditch [0047] in segment 0109. Mid brown clay with residual finds of pottery and flint. 100% excavated segment, using trowel. Machined.					

context	feature	trench	ditch seg	group no	identifier	description	cuts	cutby	over	under	spotdate
0111	0050		0111	0050	Ditch section	Segment through NE-SW ditch [0050]. 50-60° sloping sides, rounded base. Fill- 0112. Interpretation- as the feature is remarkably similar in cut and also runs parallel to the majority of other ditches on the site, it would appear that this is one of a number of relatively modern drainage ditches. 0.56m wide, 0.19m deep, 1.7m long segment. Digital photograph.					
0112	0050		0111	0050	Ditch fill	Fill of ditch [0050] in segment 0111. Grey-brown clay with regular stones and chalk flecks. No finds. Highly compacted. Machined. 100% excavated segment, using trowel, shovel, mattock and fork. No finds. Interpretation- extremely similar to fill of other ditches.					
0113	0059 0065		0113		Ditch section	Segment through ditches [0059] and [0065]. See context sheet to find out which sections were recorded. 1.35m wide SW-NE, 1.11m long SE-NW, 0.15m deep. Photographed. 100% excavated, using trowel. No relationships visible pre-excitation in plan or post-excitation in section.					
0114	0065		0113	0065	Ditch fill	Fill of ditch [0065] in segment 0113. Mid-brown clay with chalk flecks of various sizes. 100% excavated, using trowel. Machined. Identical to (0115).					
0115	0059		0113	0059	Ditch fill	Fill of ditch [0059] in segment 0113. Mid-brown clay with chalk flecks of various sizes. 100% excavated, using trowel. Machined. Identical to (0115).					
0116	0118		0116	0118	Ditch section	Segment of NE-SW ditch [0118]. Fairly shallow, dish-shaped with 45° edges and flat-concave base. 0.75m wide SE-NW, 1.5m long segment, 0.18m deep.					
0117	0118		0116	0118	Ditch fill	Fill of ditch [0118] in segment 0116. A mid-light pale brownclay fill with occasional flint, moderate chalk flecks and occasional charcoal inclusions. No finds. 100% excavated, using trowel and shovel.					
0118	0118			0118	Ditch cut	Cut of ditch running ENE-WSW across site parallel to other ditches in the field system. Is located between ditches [0061] and [0039]. Many segments dug and samples taken. Photographed under segment numbers. 0.7-0.8m wide, 0.18-0.22m deep. Interpretation- probably all medieval to post-medieval drainage.					
0119	0065		0119	0065	Ditch section	1m long excavated ditch section through ditch [0065]. Near to western edge of site. Photographed. 0.52m wide, 0.2m deep.					
0120	0065		0119	0065	Ditch fill	Fill of ditch [0065] in segment 0119. Mid brown clay with moderate chalk inclusions. No finds. 100% of segment excavated, using trowel, shovel and mattock.					
0121	0121			0121 0036	Pit cut	Cut of oval pit on northern edge of pit [0036] (evaluation number). Fill- 0122. 0.8m wide E-W, 0.66m long N-S, 0.11m deep. Photographed.					
0122	0121			0121 0036	Pit fill	Fill of pit [0121]. Mid grey-brown clay. No finds. 50% excavated, using trowel, shovel and mattock.					
0123	0059		0123	0059	Ditch section	Segment of ditch [0059]. 0.6m wide, 0.18m deep. Moderately sloping sides and flat base.					
0124	0059		0123	0059	Ditch fill	Fill of ditch [0059] in segment 0123. Mid brown clay fill with chalk flecks. Had finds. 3 bucket sample.					
0125	0042		0125	0042	Ditch section	Segment of ditch [0042]. 0.4m wide, 0.05m deep. Very shallow and truncated. Not drawn or photographed because of its shallow cut.					



context	feature	trench	ditch seg	group no	identifier	description	cuts	cutby	over	under	spotdate
0126	0042		0125	0042	Ditch fill	Fill of ditch [0042] in segment 0125. Mid brown clay with chalk flecks.					
0127	0042		0127	0042	Ditch section	Segment of ditch [0042]. Same as 0125. 0.4m wide, 0.05m deep. Very shallow and truncated. Not drawn or photographed because of its shallow cut.					
0128	0042		0127	0042	Ditch fill	Fill of ditch [0042] in segment 0127. Same as (0126). Mid brown clay with chalk flecks. 3 bucket sample taken.					
0129	0047		0129	0047	Ditch section	Segment of ditch [0047]. 0.5m wide, 0.2m deep. Moderately sloping sides and flat base. 3 bucket sample taken under this number accidentally instead of (0130).					
0130	0047		0129	0047	Ditch fill	Fill of ditch [0047] in segment 0129. Mid grey/brown clay and chalk flecks.					
0131	0053		0131	0053	Ditch section	Segment through narrow NE-SW ditch [0053] near to eastern site edge. 0.38 m wide, 0.08m deep. Photographed. Fill- 0132.					
0132	0053		0131	0053	Ditch fill	Fill of ditch [0053] in segment 0131. Mid brown clay and occasional chalk flecks. No finds. 3 bucket sample taken. Excavated using trowel, shovel, mattock and fork.					
0133	0036 0134		0133	0134 0036	Section	Section through pits [0134] and [0036]. 2.4m wide SW-NE, 0.4m deep. Photographed. Relationships unclear.					
0134	0134		0133	0134	Pit cut	Cut of large, multilayered pit. 45° steep, even sides. Concave base. 1.42m wide SW-NE, 0.4m deep. Photographed.					
0135	0134			0134	Pit fill	Upper fill of pit [0134]. Mid brown clay with orange flecks. Disturbed in sections 0133 and 0144 by modern disturbance. 100% excavated, using trowel.					
0136	0134			0134	Pit fill	Secondary fill of pit [0134]. Dark grey/black clay with lumps of charcoal 0.03m across. 5 bucket sample taken. Pot and flint finds. 100% excavated, using trowel.					
0137	0134			0134	Pit fill	Lower fill of pit [0134]. Mid-brown clay with numerous orange flecks. No finds. 3 buckets of environmental samples taken. No finds. 100% excavated, using trowel.					
0138	0036		0133	0036	Pit fill	Fill of shallow pit [0036]. Pit appears to be shallow, but is in fact over-machined- pit had two fills in the evaluation. Mid grey clay with orange flecks. 100% excavated, using trowel.					
0139	0139		0144	0139	Pit cut	Very shallow pit on west side of pit [0134]. So shallow that its cut is unclear. Flat base. Probably circular on plan. 0.8m wide NE-SW, 0.14m deep, 0.6m long NW-SE. Level taken by TST. Machined. Photographed. Slight modern disturbance on top of pit. 3 bucket sample taken from pit as (0147). See that context for more information.					
0140	0139		0144	0139	Pit fill	Mid brown clay with frequent orange Iron flecks. Any potential finds were mixed with those from (0141), (0142) and (0143) and bagged under (0147), this was also the case for the three samples from the pit as 0141-3 seemed mixed in the pit. Machined.					
0141	0134		0144	0134	Pit fill	Upper fill of pit [0134]. Finds from this fill were hard to separate from those of rest of pit, so were numbered as (0147). Contained bone, flint and pottery. Slight modern disturbance on top of fill. Same as (0135). Mid-orange/brown clay, with flints and Fe staining. Heavily compacted. 100% excavated, using trowel, shovel, mattock and fork.					

context	feature	trench	ditch seg	group no	identifier	description	cuts	cutby	over	under	spotdate
0142	0134		0144	0134	Pit fill	Middle fill of pit [0134]. Finds from this fill were hard to separate from those of rest of pit, so were numbered as (0147). Contained bone, flint and pottery. Same as (0136). Dark black/grey lamy clay. More loamy than either 0141 or 0143. Occasional charcoal lumps. 100% excavated, using trowel, shovel, mattock and fork.					
0143	0134		0144	0134	Pit fill	Lower fill of pit [0134]. Finds from this fill were hard to separate from those of rest of pit, so were numbered as (0147). Contained bone, flint and pottery. Same as (0137). Orange-flecked, mid-grey clay. Similar to (0141) but more grey-blue in colour. Cuts [0139]. 100% excavated, using trowel, shovel, mattock and fork.					
0144	0134 0139			0134	Section	Section of pits [0134] and [0139]. Appears to show [0134] cutting [0139], though there is a thin modern trench disturbing the top of both pits running E-W, which makes it a little less certain. Photographed.					
0145	0050		0145	0050	Ditch section	1m excavated segment through NE-SW ditch [0050], south of segment 0111. 0.52m wide, 0.14m deep.					
0146	0050		0145	0050	Ditch fill	Fill of ditch [0050] in segment 0145. Mid-brown clay and occasional chalk flecks. No finds. Excavated using trowel, shovel, mattock and fork. 3 bucket sample taken.					
0147	0134 0139			0134 0139	Pit fill	Fill number assigned to finds and samples taken from pits [0134] and [0139]. Relevant to fills (0140), (0141), (0142) and (0143). Issued because these fills were hard to distinguish from one another and quite disturbed by a modern trench. Contained pottery, bone and flint. 3 bucket sample taken.					
0148	0061		0148	0061	Ditch section	Segment of ditch [0061]. 0.5m wide, 0.2m deep. Moderately sloped sides, flat base. Not drawn or photographed.					
0149	0061		0148	0061	Ditch fill	Fill of ditch [0061] in segment 0148. 3 bucket sample taken. Mid brown clay and chalk.					
0150	0039		0150	0039	Ditch section	Segment through ditch [0039]. 45° sloping sides and flat base.					
0151	0039		0150	0039	Ditch fill	Fill of ditch [0039] in segment 0150. Mid-brown clay with occasional flint lumps.					
0152				0001	Unstratified finds	Unstratified finds.					
0153	0042		0153	0042	Ditch section	1.3m Ditch segment through NE-SW ditch. SE of segment 0105. Fill- (0154). 0.55m wide.					
0154	0042		0153	0042	Ditch fill	Fill of ditch [0042] in segment 0153. Mid-brown clay with chalk flecks. No finds. 100% of segment excavated, using trowel, shovel, mattock and fork.					
0155	0059		0155	0059	Ditch section	1.1m long excavated ditch segment through N-S ditch. 0.56m wide, 0.14m deep. Fill- (0156).					
0156	0059		0155	0059	Ditch fill	Fill of ditch [0059] in segment 0155. Mid-brown clay. Occasional chalk. No finds. 100% of segment excavated, using trowel, shovel, mattock and fork. [2 frags of HMF collected as 0156]					
0157	0050		0157	0050	Ditch section	Segment through ditch [0050]. 1.67m long excavated segment, 0.6m wide. Fill- (0158).					

context	feature	trench	ditch seg	group no	identifier	description	cuts	cutby	over	under	spotdate
0158	0050		0157	0050	Ditch fill	Fill of ditch [0050] in segment 0157. Mid-brown clay. No finds. 100% excavated segment.					
0159	0053		0159	0053	Ditch section	Segment through ditch [0053]. 1.3m long segment, 0.66m wide. Ditch less linear in plan and more disturbed. Fill- (0160).					
0160	0053		0159	0053	Ditch fill	Fill of ditch [0053] in segment 0159. Mid-brown clay. Disturbed. No finds. 100% excavated segment.					
0161	0033		0161	0033	Ditch section	Segment through ditch [0033]. 1.66m long segment, 0.44m wide. Ditch is thin, hard to see and fizzles out to the NE. Fill- (0162)					
0162	0033		0161	0033	Ditch fill	Fill of ditch [0033] in segment 0161. Mid-brown clay. No finds. 100% excavated segment. 3 bucket sample taken.					
0163	0047		0163	0047	Ditch section	Segment through ditch [0047]. Most western segment of [0047]. Gently sloping sides. Rounded base. Very similar to all the other ditches with which this one runs parallel. Fill- (0164). 0.54m wide NW-SE, 1.7m long segment NE-SW, 0.11m deep. Digital photograph. Level taken by TST.					
0164	0047		0163	0047	Ditch fill	Fill of ditch [0047] in segment 0163. No finds. Mid-grey/brown clay with frequent flints and occasional chalk flecks. Quite similar to natural. Not sampled in this segment. 100% excavated segment, using trowel, shovel, mattock and fork.					
0165	0165			0165	Pit cut	Oval pit cut, shallow sides, concave base. 1.6m x 1.2m. Cut into chalk/flint gravel natural. Fill- (0166).					
0166	0165			0165	Pit fill	Fill of pit [0165]. Dark-brown loam clay with frequent chalk. Relatively loose. 3 bucket sample taken. Contained pottery.					
0167	0168 0170		0167	0167	Section	Section/segment through pits [0168] and [0170]. No relationships can be seen in section. Associated fills- (0169), (0171) and (0186). 2.8m long section. Excavated with trowel. Photographed. See reverse of context sheet for sketch plan.					
0168	0168		0167	0168	Pit cut	Cut of small pit. Cuts into, or cut by [0170], but relationship not visible in plan or section. Oval in plan, irregular in section (see sketch on reverse of 0167). Edges fairly steep 50°-60°, to a fairly flat base. Fill- (0169). 0.8m wide NW-SE, 1.4m (max) SW-NE, 0.25m deep. Photographed under section number?			0171?		
0169	0168		0167	0168	Pit fill	Fill of pit [0168] in section/segment 0167. Very compact mid-brown clay fill with occasional chalk and charcoal flecks and frequent medium sized flints <0.2m. 50%, then 100% excavated, using trowel. Pottery and bone found. 3 bucket sample taken.	0170?				
0170	0170		0167	0170	Pit cut	Cut of slightly larger pit than [0168] in segment/section 0167. Either cuts or is cut by [0168] (0169). No relationships visible though. Irregular circle in plan, irregular bowl in section. Edges fairly steep- 45°-50°, irregular sloping to concave, irregular base. Fills- (0171) and (0186) 1.2m-1.4m wide N-S, 1.2m long E-W, 0.38m deep. Photographed.			0169?		
0171	0170		0167	0170	Pit fill	Fill of pit [0170] in section/segment 0167. Very compact mid-brown clay with occasional chalk and charcoal flecks and moderate amount of mixed flint. 50% then 100% excavated, using trowel. 3 bucket environmental sample taken. Contained pottery and bone.	0168?				

context	feature	trench	ditch seg	group no	identifier	description	cuts	cutby	over	under	spotdate
0172	0059		0172	0059	Ditch section	Segment through N-S ditch [0059]. Sides fairly regular at 45°, coming down to an undulating, rounded base. 0.79m wide E-W, 1.8m long N-S, 0.26m deep. Level taken by TST. Digital photograph. Interpretation- appears to be a potentially older ditch compared to others on site due to nature and quantity of finds. Also because it is less regular in plan. Fill- (0173).					
0173	0059		0172	0059	Ditch fill	Fill of [0059] in segment 0172. Mid grey-brown loamy-clay with frequent chalk flecks and nodules and occasional stones. Finds- pottery, bone, flint and 'other'. Looser fill than in other ditches on site. 100% excavated segment, using trowel, shovel, mattock and fork. Machined.					
0174	0174			0174	Pit cut	Cut of pit. 45° sloping sides to west, 70° to east, base concave. Pit dug into degraded, silty clay natural. 1.35m wide W-E, 1.24 m long N-S, 0.5m deep. Photographed. Fills- (0175), (0184) and (0185).					
0175	0174			0174	Pit fill	1° fill of pit [0174]. Mid grey clay with regular charcoal and orange flecks, numerous flint and sandstone cobble inclusions. 4 bucket environmental sample taken. Finds- pottery and flint. 100% excavated, using trowel, shovel, mattock and fork.					
0176	0176		0177 0179	0176	Ditch cut	Ditch/gully that runs WNW-ESE at western end, then curves south to NW-SE alignment at eastern end. This number has been assigned to what might be two (or more) indistinguishable features. Cut by what appear to be modern drainage trenches or plough lines. Segments- 0177 and 0179. Fills- 0178 and 0180. Digital photographs of segments.					
0177	0176		0177	0176	Ditch section	Segment through DITCH [0176]. West of segment 0179. Shallow-moderately sloping sides. Uneven, undulating base. Fill- (0178). 0.59m wide NNE-SSW, 0.9m long excavated segment WNW-ESE, 0.15m deep. Digital photograph. See reverse of context sheet for sketch plan. Level taken by TST.					
0178	0176		0177	0176	Ditch fill	Dark grey-brown loam-clay fill of [0176] in segment 0177. Contained two pot sherds. Occasional flints and frequent chalk nodules. 100% excavated segment, using trowel, shovel and mattock. Machined. Probably the same as (0180).					
0179	0176		0179	0176	Ditch section	Segment of gully-ditch [0176]. East of segment 0177. Here feature appears to be deeper, wider and more regular than in 0177. Moderately sloping (approximately 45°) sides, with rounded base. May be a segment of what is actually two features but this is unclear in section or plan. See reverse of context sheet 0177 for sketch plan. 1.3m wide NE-SW, 0.6m long excavated segment NW-SE, 0.28m deep. Level taken by TST. Digital photograph. Fill- (0180).					
0180	0176		0179	0176	Ditch fill	Dark grey-brown loamy-clay fill of [0176] in segment 0179. No finds. Occasional stones and frequent chalk nodules. Probably the same as (0178). Machined. 100% excavated segment, using trowel, shovel and mattock.					
0181	01700182		0181	0170 0182	Section	Segment across pits [0170] and [0182] to find relationship (none found). Photographed. See reverse of context sheet for sketch plan and section.					
0182	0182		0181	0182	Pit cut	Small pit cut on north edge of larger pit [0170]. No relationship between the pits could be seen. Circular in plan where visible, bowl-shaped in section. Edges concave, sloping 45° to base. See reverse of context sheet 0181 for sketch plan and section. 0.4m wide, 0.5m long, 0.15m deep. Photographed. Fill- (0183).					

context	feature	trench	ditch seg	group no	identifier	description	cuts	cutby	over	under	spotdate
0183	0182		0181	0182	Pit fill	Fill of pit [0182]. Mid brown, compact clay, with few flecks of chalk and charcoal and moderate flint inclusions. Finds- pottery and bone. 50% then 100% excavated, using trowel.	0170?				
0184	0174			0174	Pit fill	2nd (mid) fill of pit [0174]. Dark grey clay with numerous charcoal flecks. Sandstone and flint cobble inclusions. 3 bucket environmental sample taken. 100% excavated, using trowel, shovel, mattock and fork.					
0185	0174			0174	Pit fill	3RD fill of pit [0174]. Mid grey clay with numerous orange flecks and some charcoal flecks. Bone found at bottom of pit. 100% excavated, using trowel, shovel, mattock and fork.					
0186	0170		0167	0170	Finds	Nearly complete vessel found in pit [0170], fill (0171). Photographed. Separated for post-excavation. Four photos taken in situ. Excavated using trowel.					
0187	0021		0187	0021	Ditch section	Section of ditch [0021]. 0.5m wide, 0.15m deep. Gentle sides, irregular base. Cut into very hard, broken chalk natural. Fill- 0188.					
0188	0021		0187	0021	Ditch fill	Fill of ditch [0021] in segment 0187. Very stony, with 30-40% chalk and dark-brown loam. Very compacted.					
0189	0021		0189	0021	Ditch section	Same as segment 0187. Not drawn or photographed. Section of ditch [0021]. 0.5m wide, 0.15m deep. Gentle sides, irregular base. Cut into very hard, broken chalk natural. Fill- 0190.					
0190	0021		0189	0021	Ditch fill	Same as fill (0188). Not drawn or photographed. Fill of ditch [0021] in segment 0189. Very stony, with 30-40% chalk and dark-brown loam. Very compacted.					
0191	0021 0053		0191	0021	Ditch section	Segment of N-S ditch [0053] and SW-NE ditch [0021]. Relationships hard to see but [0021] possibly cuts [0053] as (0193) seems more clayey than (0192) and seems to run through it. 1.7m wide SW-NE, 1.8m long N-S. Level taken by TST. No photograph due to lack of relationship in section. See reverse of context sheet for sketch plan.					
0192	0053		0191	0053	Ditch fill	Fill of ditch [0053] in segment 0191. Grey-brown, slightly loamy clay with frequent chalk lumps and occasional stones. One piece of pottery. Excavated using trowel, shovel and mattock.					
0193	0021		0191	0021	Ditch fill	Fill of ditch [0021] in segment 0191. Grey-brown clay with chalk and stones. Contained disk-shaped ceramic object with a hole in the centre. Excavated with trowel, shovel and mattock.					
0194	0194			0194	Pit cut	Large circular pit, moderate sides, concave base. Runs to edge of infilled pond? Cut into compact silt/clay and chalk natural. 2m wide and long, 0.37m deep. Fill- (0195).					
0195	0194			0194	Pit fill	Fill of pit [0194]. Initial traces of slumping on sides and base. Dark brown, stony, clay/loam. 50% then 100% excavated. 3 bucket environmental sample taken.					
0196	0196			0196	Pit cut	Oval pit, partially under eastern site edge. Cut into compact chalk/silt/sand natural. Moderate sides, concave base. Fill- (0197).					
0197	0196			0196	Pit fill	Fill of pit [0196]. Dark brown stoney clay/loam. 3 bucket sample taken.					



context	feature	trench	ditch seg	group no	identifier	description	cuts	cutby	over	under	spotdate
0198	0199 0201		0198	0199	Section	Segment through ditch [0199] and pit [0201] just before ditch runs into infilled pond.. Appears in section and plan that [0199] cut [0201]. Excavated using trowel and shovel. Photographed.					
0199	0199		0198	0199	Ditch cut	Cut of ditch running roughly E-W. Runs into infilled pond and then becomes lost. Linear in plan, bowl in section. 45°-50° edges, with concave base. 0.6m wide, 0.18m deep. Photographed. Fill- (0200). Cuts pit [0201].					
0200	0199		0198	0199	Ditch fill	Fill of ditch [0199] in segment 0198. Mid brown clay with moderate chalk flecks and occasional flints. Finds- pottey. Excavated using trowel and shovel.	0201				
0201	0201		0198	0201	Pit cut	Cut of pit in segment 0198. Semi-circle in plan because it is being cut by [0199] (0200). Sides slope 45° to what looks like a concave base. 0.6m wide E-W, 0.4m of remaining length, 0.16m deep. Photographed. Fill- (0202).		0200			
0202	0201		0198	0201	Pit fill	Fill of pit [0201] in segment 0198. Light orange/brown clay. Fairly soft with occasional chalk flecks and flints. No finds. Excavated using trowel and shovel.					
0203	0203			0203	Pond cut	Possible pond. Seen in evaluation. Several fills- 0204, 0205, 0206 and 0207, two of which were sampled. Machine excavated section. Irregular shape in plan and section. Photographed.					0207
0204	0203				Pond fill	1° fill of pond 0203. Brown clay and occasional gravel. No finds.					0205 0206
0205	0203				Pond fill	2° fill of pond 0203. Gravel, chalk and clay. No finds.					0204
0206	0203				Pond fill	3° fill of pond 0203. Dark brown/red stained silt/clay- water lain? No finds.					0207
0207	0203				Pond fill	4° fill of pond 0203. Mixed, mid-yellow/grey silt/clay with broken chalk. No finds. 4 bucket sample taken.					0203 0206
0208	0208			0208	Pit cut	Cut of small, oval-shaped pit, concave, smooth base with irregular sloping sides. Aligned N-S (longest axis is N-S). 0.54m wide W-E, 0.85m long N-S, 0.2m deep. Photographed. May have been photographed under number 0078, which it was initially accidentally numbered as. Fill- 0079					
1000	0001			0001	Small find	Coin(?) found in small topsoil patch that was not removed during stripping. 2.9m from south edge of site and 12m from west edge of site.					

## Appendix 2: Finds quantities

OP	Pottery		Flint		Animal bone		B Flint/stone		Miscellaneous	Spotdate
	No	Wt/kg	No	Wt/kg	No	Wt/kg	No	Wt/kg		
0001	1	0.012	1	0.028						LIA-ERom
0006	7	0.003								EIA
0013	1	0.002								EIA
0022	2	0.002	1	0.010						EIA
0024	19	0.054								EIA
0025	9	0.033	1	0.010						EIA
0027	4	0.010								EIA
0041			5	0.043						L. Preh
0044	3	0.024	2	0.017						EIA
0046	4	0.011	1	0.017						EIA
0063	20	0.573								EIA
0068	9	0.026	3	0.038						EIA
0069	12	0.056			20	0.054				EIA
0075	3	0.001								Preh
0081			2	0.060						
0085	4	0.005	5	0.036						LIA-ERom, EIA
0091			2	0.020						[preh?]
0097			1	0.011						
0106	1	0.001								Rom
0108	1	0.001	2	0.038						EIA
0110			2	0.031						
0124	4	0.012								EIA
0136	19	0.090	9	0.092	6	0.079	3	0.019	FClay 3 (0.022)	EIA
0137	1	0.001	9	0.127	34	0.296	1	0.036	FClay 5 (0.029)	EIA
0147	3	0.020	4	0.016	12	0.040	29	0.068		EIA
0152			1	0.023						
0156	2	0.013								EIA
0166	4	0.004	1	0.031						BA
0171	47	0.184	3	0.014	27	0.108				EIA
0173	8	0.044	1	0.007	3	0.007			1Snail (0.001)	EIA
0175	5	0.016	2	0.038	6	0.042				BA
0178	2	0.024								EIA
0183	1	0.001								preh
0184	1	0.016	1	0.015	1	0.019	1	0.020		BA
0185	12	0.082	2	0.091	23	0.100	4	0.223		BA
0186	64	0.514								EIA
0192	2	0.001								preh
0193	1	0.009								LC3/4
0195	1	0.001	1	0.022	1	0.001				preh
0197	2	0.012								EIA
<b>Total</b>	<b>287</b>	<b>1.880</b>	<b>61</b>	<b>0.835</b>	<b>133</b>	<b>0.746</b>	<b>38</b>	<b>0.366</b>		

## Appendix 3: Pottery

OP	Fabric	dsc	No	Wt/g	Abr	Notes	Date
0001	GROG	b	1	12		necked jar. black surf oxy core (wheelmade)	E/MC1
0006	Q1	U	7	3	V	scraps	E IA
0013	F2	U	1	2			E IA
0022	F1	U	2	2			E IA
0024	F2	U	7	22			E IA
	Q1	U	12	32		Smoothed surface	E IA
0025	Q2	U	9	33		sand with flint	E IA
0027	F2	U	1	3	Y		E IA
	Q1	U	3	7	Y		E IA
0044	F2	U	1	7			E IA
	F2	U	1	16		pierced when wet	E IA
	Q1	U	1	1			E IA
0046	F2	U	4	11	Y		E IA
0063	F1	B	1	428		simple base,(140mm,100%) recent breaks	E IA
	F2	R	18	69		small coarse shouldered jar.flat rim (120mm,10%) fintertip impressed	E IA
	Q2	U	1	76		recent breaks, sharp round shouldered jar	E IA
0068	F1	U	3	6	Y		E IA
	F2	U	4	19	Y		E IA
	U	U	2	1	V		Preh
0069	F2	U	12	56			E IA
0075	U	U	3	1			Preh
0085	F2	U	3	2			E IA
	GROG	b	1	3		Abraded bodysherd (wheelmade)	E/MC1
0106	GX	b	1	1			Rom
0108	F1	U	1	1	V		E IA
0124	Q1	R	1	2		rounded rim, smoothed surface	E IA
	Q1	U	2	6			E IA
	Q2	R	1	4		flat rim, cabled on top	E IA
0136	F	U	2	7	V		Preh
	F2	U	16	81	Y		E IA
	F3	U	1	2	Y		E IA
0137	F1	U	1	1	Y		E IA
0147	F1	R	1	13	Y	small closed bowl/ cup, rounded rim	E IA
	F2	R	1	6	Y	jar, flat rim	E IA
	F2	U	1	1	Y		E IA
0156	F3	U	2	13	Y	could be Neolithic	E IA
0166	F2	U	1	1	V		Preh
	G1	U	3	3	Y		BA
0171	F1	R	2	35		small coarse shouldered jar, rounded rim	E IA
	F1	U	30	120	Y		E IA
	Q2	U	15	29	Y		E IA
0173	F1	U	4	6	Y		E IA
	F2	U	2	35			E IA
	Q1	U	2	3	Y		Preh
0175	G1	B	1	4	Y		BA
	G1	U	4	12	V		BA
0178	F2	U	2	24			E IA
0183	Q	U	1	1		scrap	Preh
0184	G1	U	1	16			BA
0185	G2	U	12	82		grog with flint	BA
0186	F2	R	2	66		coarse jar, flat rim	E IA
	F2	U	62	448	Y		E IA
0192	F	U	2	1			Preh
0193	HAX	b	1	9		Wall sherd trimmed round (40mm,5%) hole drilled in centre (c. 6mm) for	LC3/4
0195	F1	U	1	1			Preh
0197	F2	U	2	12	V		E IA
0200	Q1	U	8	22			E IA

## Appendix 4: Flint

OP	Categ	Type	No.	Com- plete	Cor tex	Pat ina	Sharp	Edge damage	Notes
0001	retf	ovate	1	1	1				ovate with some bifacial flaking - both ends shallow flaked qu extensively on dorsal face and lesser flaking of much of ventral edges edges, qu thin but cortical - knife-like
0022	retf	retf	1	1		1		slight	qu thin fl with ret both sides to dist point, point rather broad for a piercer
0024	flak	flake	1	1	1	1	quite		squat qu thick, cort distal edge
0041	flak	blade-like flake	1	1	1			yes	sm, cort plat
	flak	flake	4	4	2	2	quite		gen squat
0044	flak	flake	2	2	1	1		slight	
0046	flak	flake	1	1	1	1		slight	
0068	flak	flake	2	2	2	2	yes		
0081	core	single flake	1	1	1				v sm (44g) qu neatly used cortical frag with fls from one end
	flak	flake	1	1	1	1		slight	
0085	flak	flake	4	3	3	3		some	1 thin medial frag - poss bl-like, others irreg with chlky type cortex
	scpf	end scraper	1	1		1		slight	v thin, slightly curving fl 'teardrop' shape with sm abr plat, sh, minimal ret of convex dist edge. E Neo
0091	flak	flake	1	1	1			slight	broad
	utfl	utilised flake	1	1		1		slight	sm squat, slight prob ut edeg
0097	flak	flake	1	1	1	1		slight	
0108	flak	flake	1	1		1		yes	qu thick
	utfl	utilised flake	1	1	1	1		yes	damage of edges - one edge may be due to use
0110	flak	flake	2	2	2	1		slight	both irreg broad. primary flake
0136	flak	blade-like flake	1	1	1		quite		sm
	flak	flake	8	6	6	6	quite		all irreg qu jagged pieces. primary flake
0137	core	multi platform blade core	1	1					v sm (58g) neat core has had mainly squat bl-type fls struck - mainly from one plat but some others
	flak	blade-like flake	2	2		2	quite		both v sm, and both same col, pat and size as core from same ctxt but can't seem to fit them
	flak	flake	6	6	4	6	quite		mainly qu sm and squat with 2 thick shatter-like - 1 v similar in colour/pat and shape to core from same ctxt
0147	flak	flake	4	4	4	4		slight	sm pat'd pieces, some qu sharp
0152	retf	retf	1	1	1	1		yes	reverse ret dist edge to a slightly protruding 'spur' at dorsal ridge - scr-like
0166	flak	flake	1	1	1	1		slight	
0171	flak	flake	2	2	1	2	quite		both qu sm and squat
	utfl	utilised flake	1	1	1	1		slight	qu sm and squat, qu neat
0173	flak	flake	1	1	1	1	quite		qu sm thick and irreg, hh
0175	flak	flake	1	1		1	yes		sm squat jagged hh
	flak	shatter	1		1		yes		Burnt
0184	flak	flake	1	1		1	quite		irreg qu jagged, squat, cort plat
0185	flak	flake	1	1	1		quite		irreg from side of cortical nodule type core, hh. primary flake
	scpf	scraper	1	1	1				irreg qu thick ovate fl, has ret of one end - scr-like
0195	retb	retb	1	1	1	1	quite		primary flake, fairly large neat bl with abr plat - dist point is slight ret (or poss ut) E Neo