



University of  
**Leicester**

**Archaeological Services**

A photographic survey of  
Shangton Hall Farm, Cartree Road,  
Shangton, Leicestershire  
NGR: SK 7138 9755

Sophie Clarke



ULAS Report No 2012-116.  
©2012

**A photographic survey of  
Shangton Holt Farm, Gartree Road  
Shangton, Leicestershire**

**NGR: SK 7138 9755**

**Sophie Clark**

**For: Mr and Mrs Buxton**

Checked by

Signed:

Date: 27 July 2012

James Richard

**University of Leicester**

Archaeological Services

University Rd., Leicester, LE1 7RH

Tel: (0116) 2522848 Fax: (0116) 2522614

**ULAS Report Number 2012-116**

**X.A68.2012 ©2012**

## CONTENTS

Summary .....	2
Background .....	2
Methods .....	4
Results .....	5
Selected photographs from the archive .....	5
Archive .....	19
Publication .....	19
Acknowledgements .....	19
Bibliography .....	19
Appendix 1: Oasis Record .....	20

## FIGURES

Figure 1. Site location, Shangton, Leicestershire .....	3
Figure 2. Site plan (supplied by FMC Architects; not to scale) .....	4
Figure 3. Location of figures 4-27 on ground plan of Shangton Holt Farm. ....	6
Figure 4. External façade of barn, looking west. ....	6
Figure 5. As above, looking south-west. ....	7
Figure 6. As above, looking south. ....	7
Figure 7. Open front of shed and entrance to farm yard. Looking north .....	8
Figure 8. Central farmyard, looking north. ....	8
Figure 9. Eastern range of loose-boxes, looking east. ....	9
Figure 10. Looking north-east across farm-yard towards barn. ....	9
Figure 11. Eastern range of cow-sheds, looking south. ....	10
Figure 12. Western range of cow-sheds and cart-sheds, looking south-west. ....	10
Figure 13. Loose-box with 1855 datestone, looking north-west. ....	11
Figure 14. Detail of above. ....	11
Figure 15. Loose-boxes with initials CEI (Charles Edmund Isham) set into brickwork. ....	12
Figure 16. Detail of above. ....	12
Figure 17. Interior of cart-shed, looking south-west. ....	13
Figure 18. Southern range, with shed on left-hand side constructed after 1971 in the position formerly occupied by the farmhouse. Looking south. ....	13
Figure 19. Cast-iron kitchen range and partially demolished single-skin brick wall, possible remains of earlier farmhouse. Looking east. ....	14
Figure 20. Detail of above. ....	14
Figure 21. Workshop, with timber work-benches laid on across feeding troughs. Looking south. ....	15
Figure 22. Eastern range, cow-shed interior. Looking .....	15
Figure 23. Queen-post roof structure in cow-shed, looking north-east. ....	16
Figure 24. As above, shipping marks on imported timbers. ....	16
Figure 25. Timber stall partitions in cow-shed, looking north-east. ....	17
Figure 26. Loose-box interior. Looking south-west. ....	17
Figure 27. Loose-box interior, looking north-east. ....	18
Figure 28. Loosebox interior, looking north-west. ....	18

## **A photographic survey of Shangton Holt Farm, Gartree Road, Shangton, Leicestershire SP 7138 9755**

### ***Summary***

*An English Heritage Level 2 photographic survey was carried out on the 9th of July 2012 by ULAS for Mr and Mrs Buxton, in advance of the residential conversion of Shangton Holt Farm, Shangton, Leicestershire, which was constructed in the 19th century by Charles Edmund Isham. The archive will be deposited with Leicestershire County Council under the accession number X. A68.2012.*

### ***Background***

This document presents the results of a photographic survey undertaken in accordance with conditions secured upon planning application 12/00732/P for the residential conversion of the agricultural buildings of Shangton Holt Farm, Gartree Road, Shangton, Leicestershire NGR SK 7138 9755.

Shangton Holt Farm has been identified as being of historic, architectural and potentially archaeological significance, from information held in the Leicestershire and Rutland Historic Environment Record (HER). The complex is shown on the first edition Ordnance Survey map of the late 19th century and a date stone incorporated into the brickwork suggests a construction of 1855 for the south-western range. Traditional farm buildings have been identified as a rapidly diminishing archaeological resource.

In mitigation of the effects of the development therefore, it was recommended by the Principal Planning Archaeologist at Leicestershire County Council, in his capacity as advisor to the Planning Authority, that a Photographic Survey of the affected buildings should be undertaken prior to the commencement of works, as defined by English Heritage guidelines Recording Historic Buildings: a guide to good recording practice (2000).

The photographic survey was carried out on the 9th of July 2012 by University of Leicester Archaeological Services (ULAS), in accordance with the Brief and following procedure set out in the Design Specification for Photographic Survey (ULAS).

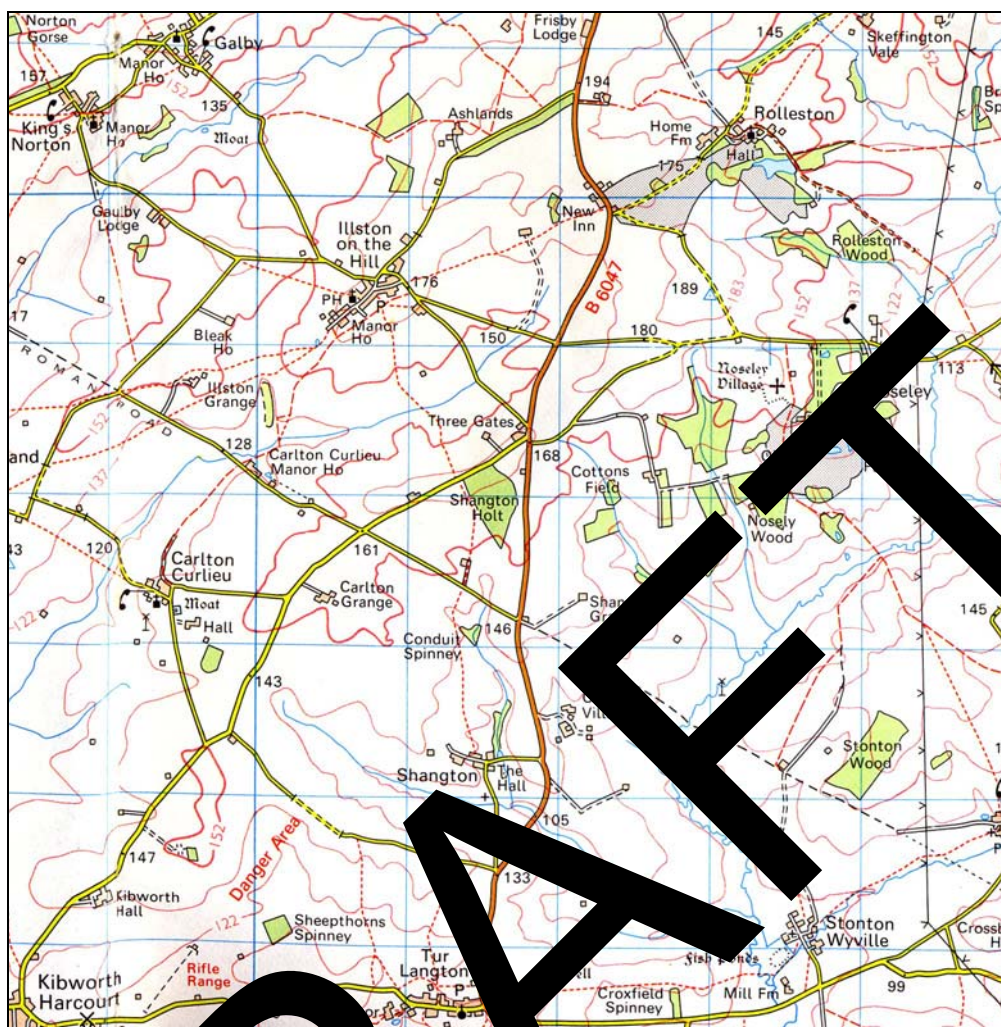


Figure 1. Site location, Shangton, Leicestershire

Reproduced from OS Landranger 1:50,000 scale maps by permission of Ordnance Survey® on behalf of The Controller of Her Majesty's Stationery Office. © Crown copyright. All rights reserved. AL 100029495

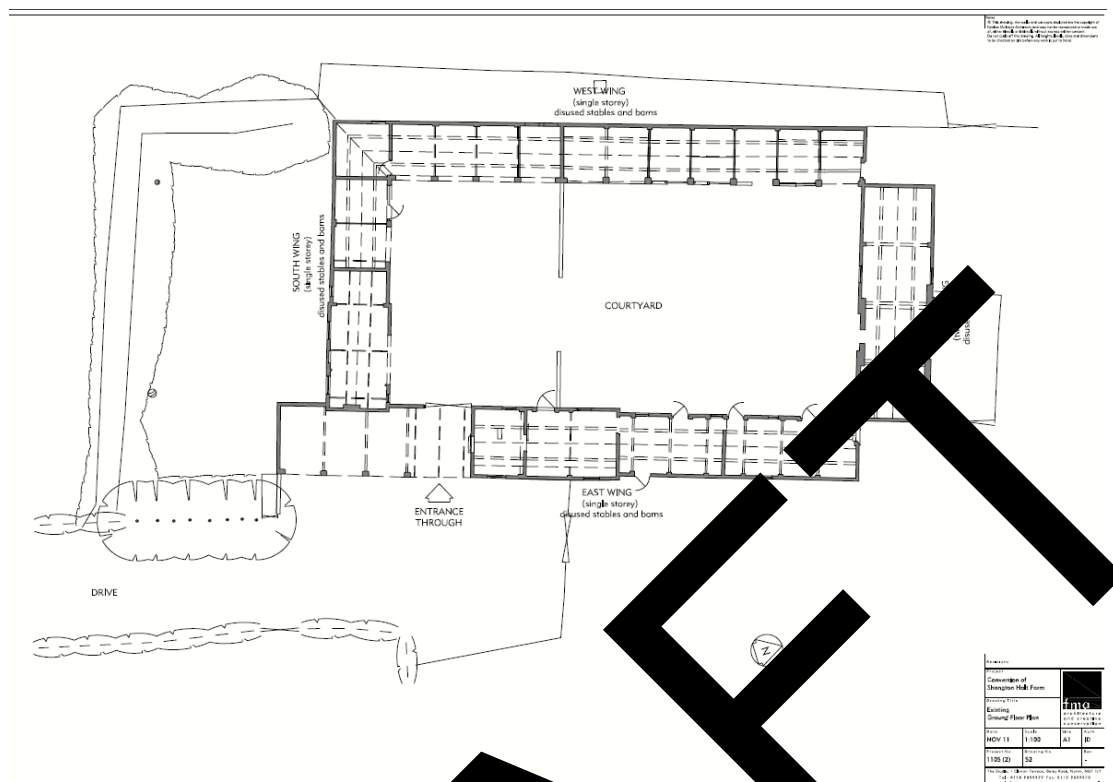


Figure 2. Site plan (supplied by JG Architects; not to scale)

## Methods

The photographic research followed the photographic section of Level 2 of English Heritage's *Understanding Historic Buildings* (2006). It included:

- Item 1: General view or views of the exterior of the building.
  - Item 2: The overall appearance of principal rooms and circulation areas.
  - Item 3: External detail, structural or decorative, which is relevant to the building's design, development and use and which does not show adequately on general photographs.
  - Item 4: The building's relationship to its setting, to other buildings, or to a significant view.
  - Item 5: Internal detail, structural or decorative, which is relevant to the building's design, development and use, and which does not show adequately on general photographs.
  - Item 6: Internal detail, structural and decorative, which is relevant to the building's design, development and use, and which does not show adequately on general photographs.
- A summary of the building's type or purpose, historically and at present, its materials and possible date (s).

All work followed the Institute for Archaeologists (IfA) *Code of Conduct* (rev. 2010) and adhered to their *Standard and Guidance for Archaeological Investigation and Recording of Standing buildings or Structures* (2008). In addition, Leicestershire County Council's *Guidelines and Procedures for Archaeological Work in Leicestershire* was adhered to.

The buildings were photographed using a Pentax K-7 digital camera and Pentax P30 35mm film camera. The film used was Ilford HP5 rated at 400asa. Digital images were taken in proprietary RAW format and converted into TIFFs for the archive.

## **Results**

Shangton Holt Farm is one of a number of isolated farmsteads lying in the northern part of the parish of Shangton. The buildings consist of various ranges of single storey cart-sheds, loose-boxes and cattle-stalls arranged in a quadrangle around a central yard area, with an imposing, two storey barn located on the northern side. The barn was locked and inaccessible at the time of the site visit. All of the buildings are constructed of red brick, with Welsh slate roof tiles. A range of loose boxes on the western side have two plaques giving the date 1855 and the initials C. E. I., which refer to Sir Charles Edmund Isham (1819-1903), of Llangrove Hall, Northamptonshire, whose name appears in the title deeds held by the present owners. Isham was a patron of Shangton and his initials are also displayed elsewhere on the buildings within the village itself.

The preliminary OS drawing for Burton Overy made by Henry Stevens in 1814 shows no buildings at Shangton Holt at that time, whilst the first published edition OS of 1886 shows the layout of the farmstead to be complete in its present form. Although the descriptive treatment of the various structures of Shangton Holt Farm indicate that the farmstead was constructed in more than one phase, it is likely that they are broadly contemporaneous, with the 1855 date possibly indicating the completion of the quadrangle. A small, two-storey farmhouse was formerly located in the eastern corner of the southern range, but was demolished in 1890 and replaced by a single-storey structure occupying the same footprint. At the western end of this is the remains of a small room, equipped with a cast-iron kitchen range- it is not clear whether this is a relic from the earlier farmhouse or whether the fireplace was re-used within the replacement structure. The chimney stack does not extend above the roof, although this appears to have been recently replaced across the full length of the range.

## ***Selected photographs from the archive***

The following photographs have been selected from the site archive to illustrate the above account and are located on the plan below.



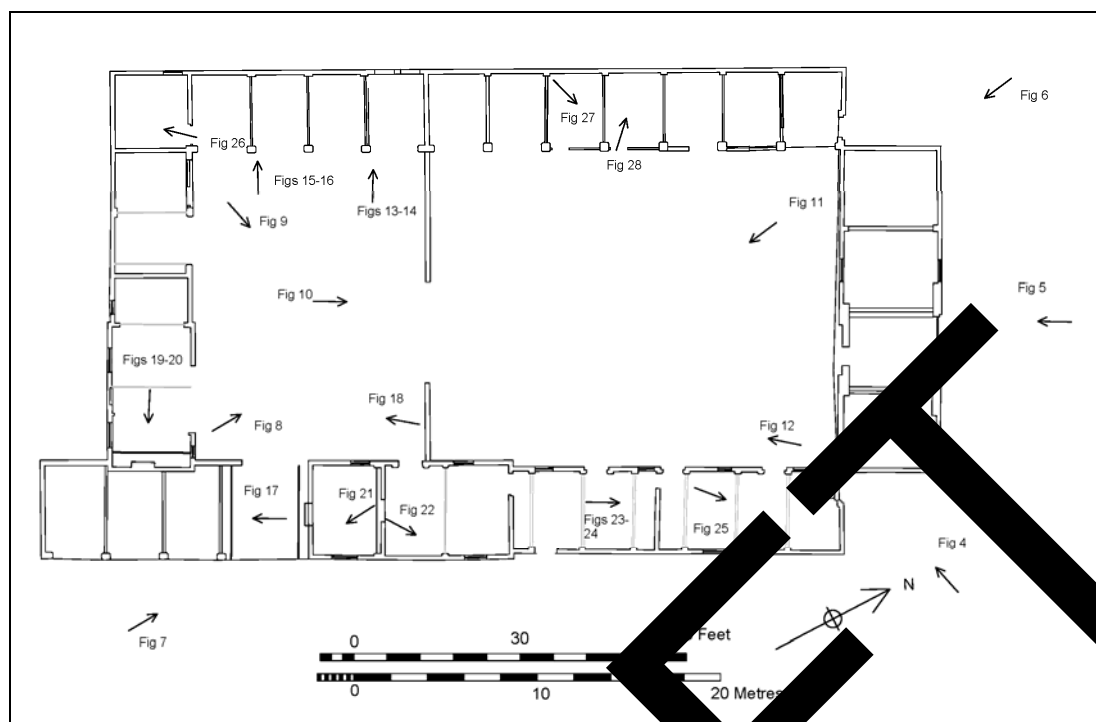


Figure 3. Location of figures 4-28 on ground plan of Shangton Holt Farm.



Figure 4. External façade of barn, looking west.





Figure 5. As above, looking south west.



Figure 6. As above, looking south.



Figure 7. Open fronted cart-shed and entrance to yard. Looking north



Figure 8. Central farmyard, looking north.





Figure 9. Eastern range of loose-boxes looking east.



Figure 10. Looking north-east across farm-yard towards barn.



Figure 11. Eastern range of loose-boxes and cow-sheds, looking south.



Figure 12. Western range of cow-sheds and cart-sheds, looking south-west.





Figure 13. Loose-boxes, with 1855 datestone looking north-west.



Figure 14. Detail of above.



Figure 15. Loose-boxes with initials CEI (Charles Edmund Isham) set into brickwork.



Figure 16. Detail of above.





Figure 17. Interior of horse shed looking south-west.



Figure 18. Southern range, with shed on left-hand side constructed after 1971 in the position formerly occupied by the farmhouse. Looking south.





Figure 19. Cast-iron kitchen range and partially demolished single-skin brick wall, possible relics of earlier farmhouse. Looking east.



Figure 20. Detail of above.



Figure 21. Workshop, with timber work-benches laid across feeding troughs. Looking south.



Figure 22. Eastern range, cow-shed interior. Looking east.





Figure 23. Queen-post roof structure in cow-shed looking north-east.



Figure 24. As above, shipping marks on imported timbers.



Figure 25. Timber stall partition in cow-shed, looking north-east.



Figure 26. Loose-box interior. Looking south-west.





Figure 27. Loose-box interior, looking north-east.



Figure 28. Loosebox interior, looking north-west.

## ***Archive***

The archive consists of the digital image files on DVD, digital contact sheets, monochrome film and associated contact prints, a plan of the building showing position and direction of all photographs taken and a photographic index. It will be deposited with Leicestershire County Council under the accession number X.A68.2012.

## ***Publication***

A version of the summary will appear in *Transactions of the Leicestershire Archaeological and Historical Society* in due course. The report will be added to the Archaeology Data Service's (ADS) Online Access to the Index of Archaeological Investigations (OASIS) database.

## ***Acknowledgements***

The project was managed by Richard Buckley and carried out by Sophie Clarke of ULAS.

## ***Bibliography***

English Heritage, 2001 *Understanding Historic Buildings*

IfA, 2010 *Code of Conduct*.

IfA, 2008 *Standards and Guidelines for Archaeological Investigation and Recording of Standing buildings and structures*.

Leicestershire County Council, 1997 *Guidelines and Procedures for Archaeological Work in Leicestershire*.

Pevsner, N. and Williamson, E. 2003. *The Buildings of England: Leicestershire and Rutland*. Yale University Press: London and New Haven.

Sophie Clarke

ULAS

University of Leicester

University Road

Leicester LE1 7RH

Tel: 0116 252 2848

Fax: 0116 252 2614

Email:

[sjc46@le.ac.uk](mailto:sjc46@le.ac.uk)

27-07-2012

### *Appendix 1: Oasis Record*

INFORMATION REQUIRED	EXAMPLE
Project Name	Shangton Holt Farm
Project Type	Building survey
Project Manager	Richard Buckley
Project Supervisor	Sophie Clarke
Previous/Future work	unknown
Current Land Use	agricultural
Development Type	residential
Reason for Investigation	PPS5
Position in the Planning Process	As a condition
Site Co ordinates	SK 7138 9755
Start/end dates of field work	July 2012
Archive Recipient	LCC
Height min/max	not known
Study Area *	0.5 ha
Finds	None

**DRAFT**



## Contact Details

Richard Buckley or Patrick Clay  
University of Leicester Archaeological  
Services (ULAS)  
University of Leicester,  
University Road,  
Leicester LE1 7RH

T: +44 (0)116 252 9118

F: +44 (0)116 252 2614

E: [ulas@le.ac.uk](mailto:ulas@le.ac.uk)

W: [www.le.ac.uk/ulas](http://www.le.ac.uk/ulas)



INVESTOR IN PEOPLE

