



# University of Leicester

## Archaeological Services

An Archaeological Watching Brief  
at 71 Main Street,  
Great Bowden, Leicestershire

NGR SP 7403 8886

Sophie Clarke



ULAS Report No 2013-169  
©2013

**An Archaeological Watching Brief  
adjacent to 71 Main Street, Great Bowden  
Leicestershire  
(NGR SP 7403 8886)**

**Sophie Clarke**

**For: Mrs Dickerson**

Approved by:

Signed:



**Date:** 08.10.2013

**Name:** Patrick Clay

**University of Leicester  
Archaeological Services**  
University Rd., Leicester, LE1 7RH  
Tel: (0116) 2522848 Fax: (0116) 2522614  
[www.le.ac.uk/ulas](http://www.le.ac.uk/ulas)

**ULAS Report Number 2013-169  
©2013**

## CONTENTS

Summary .....	1
1. Introduction.....	1
2. Site Description, Topography and Geology.....	3
3. Historical and Archaeological Background .....	3
4. Aims and Objectives .....	4
5. Methodology .....	4
6. Results.....	4
7. Conclusion .....	8
8. Archive.....	8
9. Publication .....	8
10. Bibliography .....	9
11. Acknowledgements.....	9

## FIGURES

Figure 1. Location plan Scale 1:50000 .....	2
Figure 2. Location of site at 71 Main Street, Great Bowden. © contains OS Data. Supplied by MWS Design. ....	3
Figure 3. Site plan, supplied by MWS , showing area of topsoil strip hatched in red...5	
Figure 4. Proposed site plan, supplied by MWS Design, showing new built element highlighted in red. ....	5
Figure 5. Stripped area, looking east. ....	6
Figure 6. Area of As above, looking south. ....	6
Figure 7. Example of foundation trench section, looking west. ....	7
Figure 8. Stripped area, looking north. ....	7

## **An Archaeological Watching Brief at 71 Main Street, Great Bowden, Leicestershire (NGR SP 7403 8886)**

Sophie Clarke

### **Summary**

*An archaeological watching brief was undertaken during the removal of topsoil and the excavation of foundation trenches associated with the construction of a new extension to the bungalow located at 71 Main Street, Great Bowden Leicestershire (NGR SP 7403 8886). No archaeological finds or deposits were encountered during the watching brief. The archive will be held by Leicestershire County Council under the Accession Number X.A152.2013.*

### **1. Introduction**

This report presents the results of an archaeological watching brief carried out in accordance with the National Planning Policy Framework (NPPF), (DCLG 2012) at 71 Main Street, Great Bowden, Leicestershire (SP 7403 8886), within Harborough District. The work took place on the 9<sup>th</sup> of September 2013 and was undertaken by University of Leicester Archaeological Services on behalf of Mrs Dickerson. The watching brief was undertaken in connection with the removal of topsoil and excavation of foundation trenches for a new extension to the existing bungalow (P.A. 12/01502/FUL).

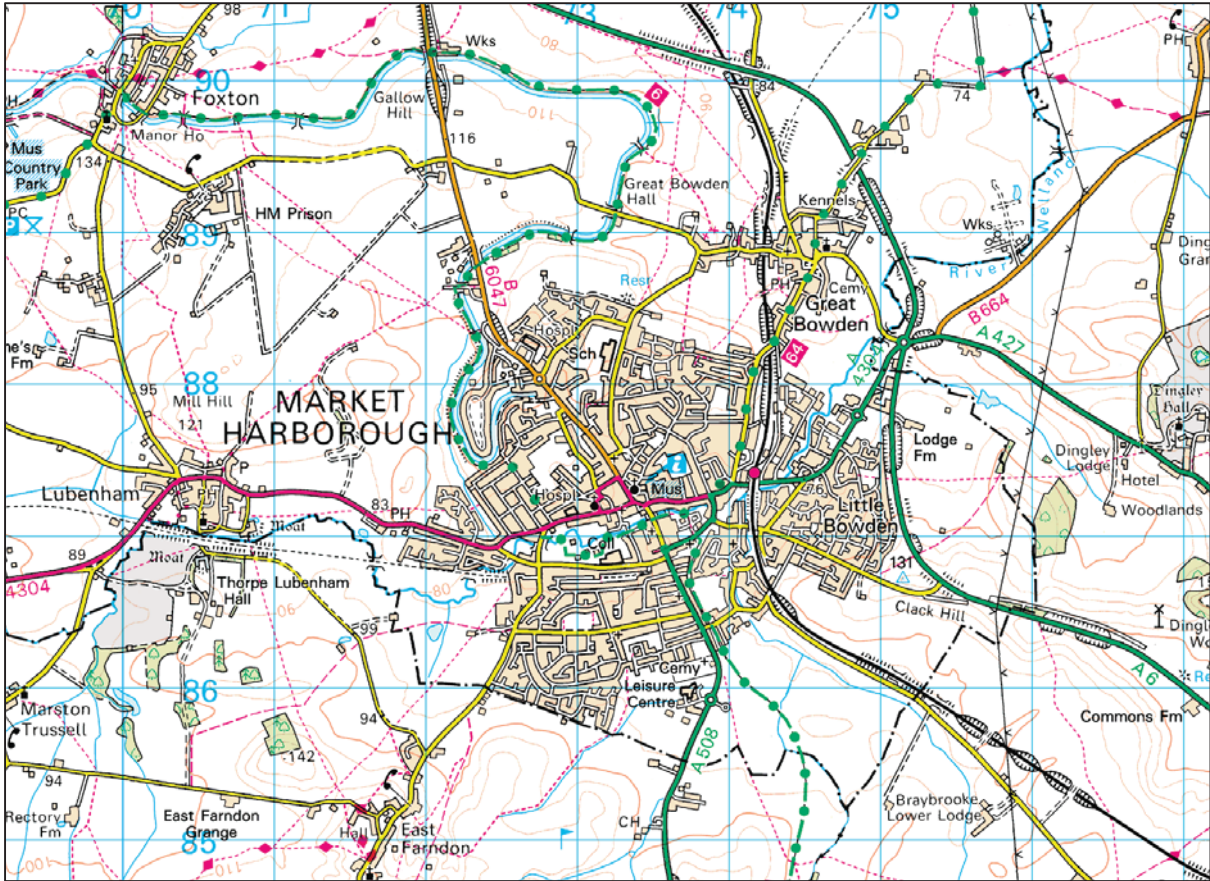


Figure 1. Location plan Scale 1:50000

Reproduced from Landranger 1:50 000 by permission of Ordnance Survey® on behalf of The Controller of Her Majesty's Stationery Office. © Crown copyright. All rights reserved. Licence number AL 100029495.

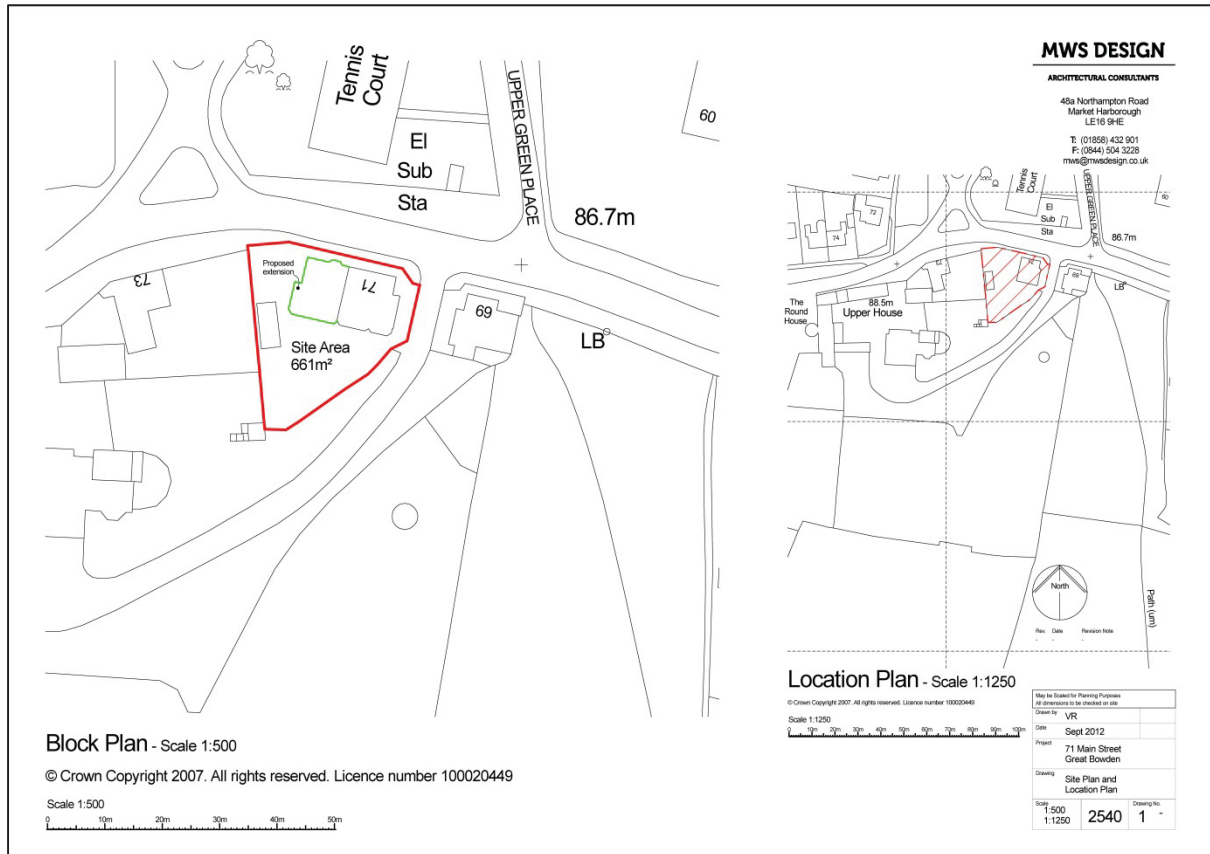


Figure 2. Location of site at 71 Main Street, Great Bowden. © contains OS Data. Supplied by MWS Design.

## 2. Site Description, Topography and Geology

The development area is located to the rear of 75 Long Street, on the southern side of the principal main street running through Atherstone, which is located in the district of North Warwickshire. The development area comprises an area of 0.08 ha.

The British Geological Survey of Great Britain indicates that the bedrock geology consists of Dyrham Formation- Siltstone and Mudstone, which was laid down in the Jurassic period. No superficial geology is recorded.

(<http://mapapps.bgs.ac.uk/geologyofbritain/home.html>) Accessed on 8th October 2013.

## 3. Historical and Archaeological Background

The application site lies within an area of significant archaeological potential, within the medieval settlement core of Great Bowden (MLE9021) and finds of medieval pottery have been recorded from the garden of the property itself (MLE6753). Recent archaeological fieldwork in Great Bowden has demonstrated that archaeological deposits spanning the period from the earliest evolution of the village to its more recent past can be expected in the vicinity of the development area and it was felt that there was a strong likelihood that buried archaeological remains could be affected by the development. The Principal Planning Archaeologist for Leicestershire County Council therefore recommended that archaeological work should be undertaken to determine if any buried heritage assets were likely to be

affected by the proposed development. A strategy for a programme of archaeological attendance, in the form of archaeological attendance during groundworks was set out in the Written Scheme for Investigation (Clay 2013), hereinafter WSI.

#### **4. Aims and Objectives**

The purpose of the current archaeological work was:

- To identify the presence/absence of any archaeological deposits.
- To establish the character, extent and date range for any archaeological deposits to be affected by the proposed ground works.
- To record any archaeological deposits to be affected by the ground works.
- To advance understanding of the heritage assets
- To produce an archive and report of any results.

#### **5. Methodology**

The work followed the WSI (Clay 2013) and adhered to the Institute for Archaeologists (IfA) *Code of Conduct* (rev. 2010) and adhered to their *Standard and Guidance for Archaeological Watching Briefs* (rev. 2008).

The programme of work consisted of the stripping of topsoil and the excavation of footings, using a mini-digger with a ditching bucket. The resulting ground surface was visually inspected, hand-cleaned where appropriate and recorded following standard ULAS methods.

#### **6. Results**

The site was visited on the 9<sup>th</sup> of September 2013. An area of ground on the western side of the house measuring approximately 5m wide and 10m long was stripped of topsoil and subsoil layers to a maximum depth of 0.5m from the original ground surface, onto the natural geological substratum, which consisted of yellow clay. Topsoil consisted of dark brown clay silt, measuring between 0.15-0.25m in depth and containing occasional fragments of brick and rare sherds of 20<sup>th</sup> century pottery, which were not retained. Subsoil consisted of dark yellowish brown silty clay. Footings were excavated using a 0.6m wide toothed bucket, removing natural boulder clay to a maximum depth of 1m below the reduced ground surface. No archaeological features or deposits were revealed during the course of these groundworks. To the south of the house, an area measuring approximately 10m long by 4m wide was stripped of topsoil only for a new patio area. The natural clay substratum was not reached in this area and no archaeological features were seen at this level.

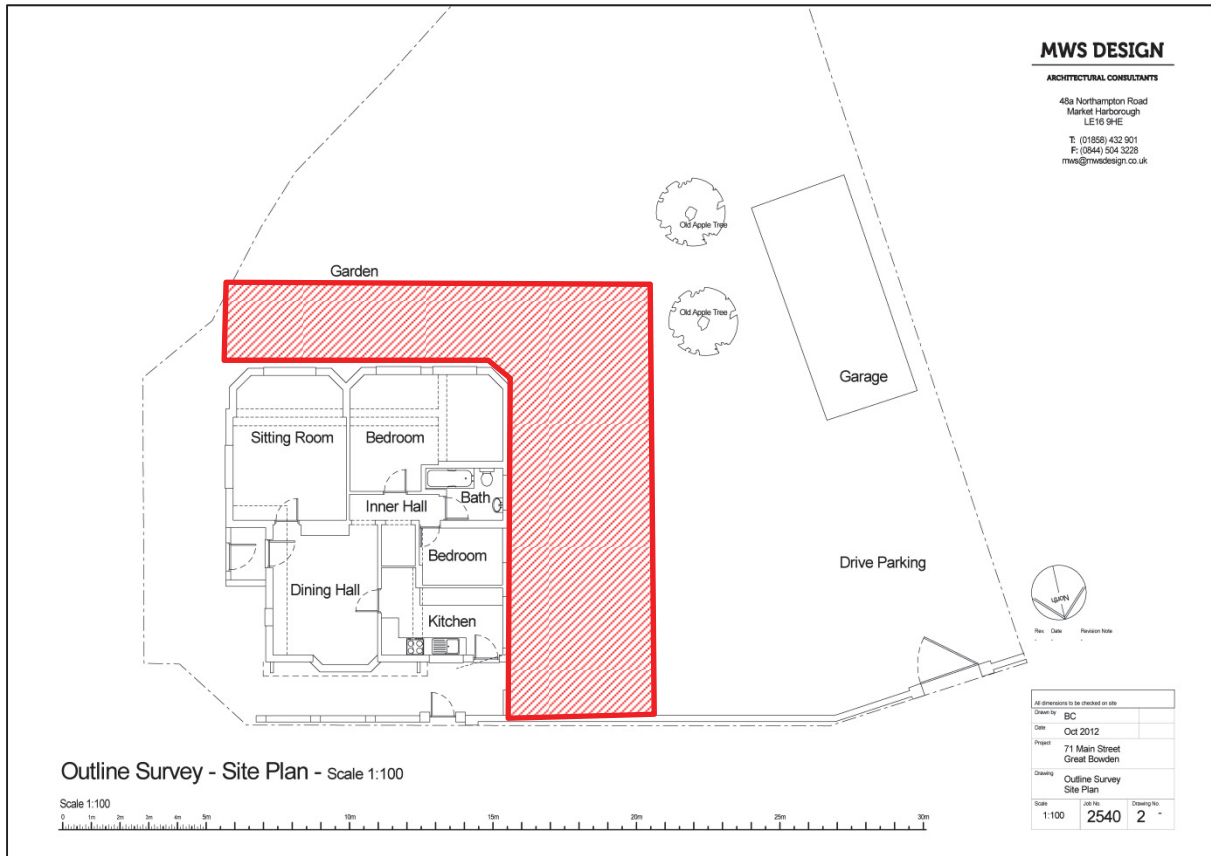


Figure 3. Site plan, supplied by MWS , showing area of topsoil strip hatched in red.

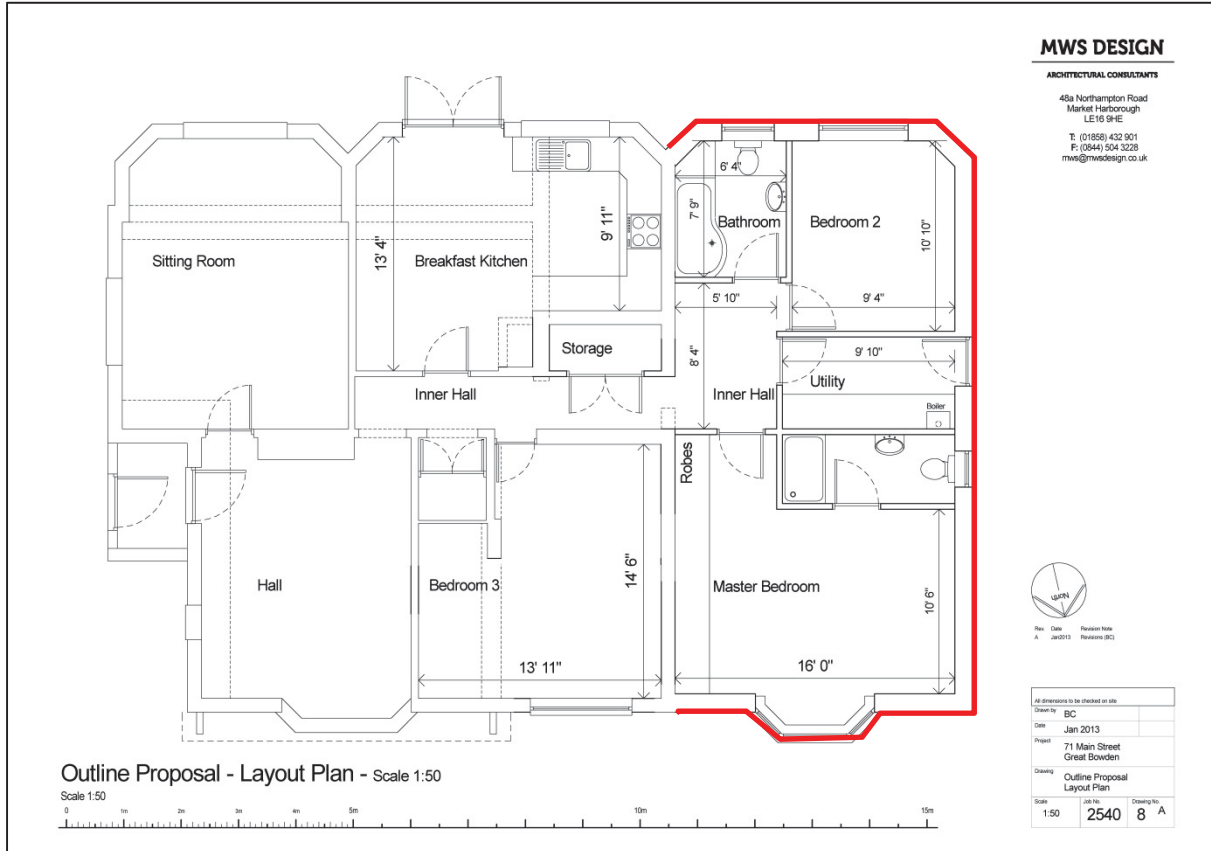


Figure 4. Proposed site plan, supplied by MWS Design, showing new built element highlighted in red.





Figure 5. Stripped area, looking east.



Figure 6. Area of As above, looking south.



Figure 7. Example of foundation trench section, looking west.



Figure 8. Stripped area, looking north.

## 7. Conclusion

Archaeological monitoring was undertaken during the groundworks associated with the construction of a new extension to the bungalow at 71 Main Street, Great Bowden. No archaeological deposits or finds were encountered during the work.

## 8. Archive

The site archive will be held by Leicestershire County Council Museums Service under the Accession Number X.A152.2013

The archive contains a watching brief pro forma record sheet, digital photographs and photo index.

The report is listed on the Online Access to the Index of Archaeological Investigations (OASIS) held by the Archaeological Data Service at the University of York. Available at: <http://oasis.ac.uk/>

## 9. Publication

A summary of the work will be submitted for publication in the local archaeological journal *Transactions of the Leicestershire Archaeological and Historical Society* and *Rutland Record* in due course. The report will be added to the Archaeology Data Service's (ADS) Online Access to the Index of Archaeological Investigations (OASIS) database held by the University of York.

### OASIS Information

Project Name	71 Main Street, Great Bowden
Project Type	Archaeological Attendance (Watching Brief)
Project Manager	P. Clay
Project Supervisor	S. Clarke
Previous/Future work	No
Current Land Use	Garden
Development Type	Residential
Reason for Investigation	As a condition
Position in the Planning Process	Ongoing
Site Co ordinates	NGR SP 7403 8886
Start/end dates of field work	09/09/2013
Archive Recipient	LCC
Study Area	0.1ha

## **10. Bibliography**

Brown, D., 2008 *Standard and guidance for the preparation of Archaeological Archives* (Institute for Archaeologists)

Clay, P. 2013 *Design Specification for archaeological work at 75 Long Street, Atherstone, Warwickshire (SP 3073 9783)*.

Institute for Archaeologists (IfA), (rev. 2012), *Code of Conduct*

Institute for Archaeologists (IfA), (rev. 2008), *Standard and Guidance for Archaeological Watching Briefs*

## **11. Acknowledgements**

The fieldwork was carried out by Sophie Clarke for ULAS. Patrick Clay managed the project. Plans were supplied by MWS Design.

Sophie Clarke  
University of Leicester Archaeological Services  
University Road  
Leicester  
LE1 7RH  
Tel: 0116 2522848  
Fax: 0116 252 2614

ULAS Report No: 2013-102

08/10/2013

## Contact Details

Richard Buckley or Patrick Clay  
University of Leicester Archaeological  
Services (ULAS)  
University of Leicester,  
University Road,  
Leicester LE1 7RH

**T:** +44 (0)116 252 2848

**F:** +44 (0)116 252 2614

**E:** [ulas@le.ac.uk](mailto:ulas@le.ac.uk)

**w:** [www.le.ac.uk/ulas](http://www.le.ac.uk/ulas)



INVESTOR IN PEOPLE

