

**Launde Abbey, Launde, Leicestershire:
Historic Building Assessment**

Part 2: Illustrations

Neil Finn, David Smith & Robert Hayward

For Trustees of Launde Abbey

Checked by Project Manager

Signed:**Date**

Name:

University of Leicester Archaeological Services

Report 2005-096 ©2005

Part 2: Illustrations

Plates

- Plate 1. Launde Abbey: West front and ha-ha with urns.
Plate 2. Launde Abbey: West front and ha-ha, looking SE.
Plate 3. Launde Abbey: East elevation. Part of former fishpond, now sunken garden, at bottom of frame.
Plate 4. Launde Abbey: Norman arch & responds embedded in the north wall, *Chapel* to left.
Plate 5. Launde Abbey: South elevation & brickwork scar of demolished C19 range at SW corner (behind statue)
Plate 6. Launde Abbey: C19 service range on south side of the house, currently *Laundry, Office & Bedroom*
Plate 7. Launde Abbey: C19 service ranges. On left former Laundry, on right *Old Dairy*, looking NE
Plate 8. Launde Abbey: Polychrome banded stone wall forming north boundary to service courtyard, looking S
Plate 9. Launde Abbey: Mid C18 stable block. West front, looking NE. Pond & well out of sight to left of frame.
Plate 10. Launde Abbey: Single storey range to E (rear) of stable block at N end, looking N.
Plate 11. Launde Abbey: Early C19 walled kitchen garden and glasshouses, looking NE.
Plate 12. Launde Abbey: Brick built sheds/bothies on N side of walled kitchen garden, looking SE.
Plate 13. Launde Abbey: Entrance to early C19 icehouse (now part of neighbouring property).
Plate 14. Launde Abbey: 'Oxford and Cambridge' building, looking SW, on site of earlier circular building.
Plate 15. Medieval arch in N wall of *Servery*, possibly opening into cloister walk of Priory Church, looking N.
Plate 16. *Chapel* interior looking west towards *Vestry* showing doorway inserted c. 1957. Compare with Plate 42
Plate 17. *Servery* occupying part of S transept of Priory Church, looking N (into crossing).
Plate 18. Detail of splay mullion window in 'spine wall' of the house in lower ground floor *Library Area*. Showing glazing bars still in situ and rubble fill behind.
Plate 19. Detail showing section of roundstone cobbling in cellar floor adjacent to 'spine wall' (*Library Area*).
Plate 20. South-east gable showing the rising series of early C16 windows, particularly the paired, six-light ground floor window.
Plate 21. Fireplace with extended, low arch form, of characteristic late C16 form in the present *Library*, which is identified as the Kitchen on earlier plans.
Plate 22. First floor C16 window in the south-east gable showing the capital detail missing.
Plate 23. West front of Launde Abbey from SW. The ironstone sections set into the lower part of the ground floor windows of the main range can be seen as a dark band at the base of the windows.
Plate 24. Detail of C17 fragment of panelling in the wall-cupboard in the first floor, SW room (*TV Lounge*).
Plate 25. Detail of polychrome banded stone wall in garden at base of the SE gable wall.
Plate 26. Detail showing staircase with two twisted and one fluted baluster to each tread, carved newel and ramped handrail.
Plate 27. Detail of stringer form on staircase.
Plate 28. East (rear) elevation of house, showing the two distinct types of stone and chimneys in the work attributed to Thomas Rickman, 1829.
Plate 29. *Sitting Room 1* door showing eight panelled door with reeded detailing, decorative paterae and Gothick decoration in the rounded head above the door.
Plate 30. Detail of the plaster moulding in the south-west ground floor room (*Seminar Room 2*).
Plate 31. Section of the Entrance hall panelling showing mixture of strap motif panels with arcading, gadrooning and serpent motifs at frieze level.
Plate 32. Detail of C19 rails and stiles with sections of C17 set into them and C19 Flemish carved vignettes planted on them. The arcading and the carved frieze are also C19 compilations.
Plate 33. Fireplace in *Dining Room* showing as two distinct sections with the lower section, including the 4-centred arch being a C19 Gothic replication and the section dated 1689 which has frieze detailing at its top, wrongly relocated to its present low level.
Plate 34. Service staircase with stick balusters and cut and chamfered newels with faceted finials.
Plate 35. Present *Staff Room*, formerly Servants' Hall, with fitted furniture and catchlight.
Plate 36. View through the roof of the main front of the house, showing the bolted, deal trusses with cast-iron yoke at the apex.
Plate 37. Launde Abbey west front and north wing. George Henton, May 10 1905.
Plate 38. Launde Abbey: Interior of Chapel. George Henton, May 10 1905.
Plate 39. Launde Abbey west front, looking NE. F. Lumbers 1957.
Plate 40. Launde Abbey: East (rear) elevation & chapel, looking WNW. F. Lumbers 1957.
Plate 41. Launde Abbey: Chapel exterior, looking NW. F. Lumbers 1957
Plate 42. Launde Abbey: Chapel interior, looking W. F. Lumbers 1957. Compare with Plate 16.
Plate 43. Launde Abbey: Fireplace in present *Sitting Room*. Frank Lumbers 1957.
Plate 44. Launde Abbey: Staircase. F. Lumbers 1957.

Plate 45. Launde Abbey: Stable block west front, looking NE. F. Lumbers 1957. Note arrangement of door and window openings prior to alteration in 1986.

Plate 46. 1948 Cambridge University Aerial Photograph. Ref: AZ46, 5 July 1948, Launde Abbey, Leicestershire 122/797044.

Plate 47. 1949 Cambridge University Aerial Photograph. Ref: CU4, 26 June 1949, Launde Abbey, Leicestershire 122/797044.

Plate 48. 1950 Cambridge University Aerial Photograph. Ref: RAF/A/107, June 1950, Launde Abbey, Leicestershire 122/797044

Figures

Figure 1. Sketch of Launde Abbey from the version of the Whatborough Map in the LLRRO (ref:PP282).

Figure 2. Sketch of Launde Abbey from the version of the Whatborough Map reproduced in Schadla-Hall, Green & Liddle (2003).

Figure 3. Launde Abbey: West front, from the NW. Illustrated in Throsby (1789).

Figure 4. Launde Abbey: West front, from the NW. Illustrated in Nichols 1800 (Plate XLIV).

Figure 5. Launde Abbey: West front, from the SW. Illustrated in Nichols 1800 (at top of Plate XLV).

Figure 6. Launde Abbey: East gable of chapel, from the NE. Illustrated in Nichols 1800 (at centre of Plate XLV).

Figure 7. Undated 19th Century engraving in the possession of Launde Abbey.

Figure 8. Elevation drawing showing C12 crossing arch embedded in N wall of Launde Abbey (Beavitt 1995).

Figure 9. Launde Abbey plan with conjectural reconstruction of the priory layout (Liddle & O'Brien 1995; reproduced in Schadla-Hall, Green & Liddle 2003).

Figure 10. Earthwork survey by R.F. Hartley, published in Schadla-Hall, Green & Liddle (2003).

Figure 11. Geophysical survey results after Beavitt (1995)

Figure 12. c.1957 ground floor plan of house with room names (adapted from Beavitt 1995, Fig. 3).

Figure 13. Cross section of western part of centre range illustrating form of roof structure.

Figure 14. Decorative plaster ceilings in ground floor rooms, based on Architects' Ground Floor Plan.

Figure 15. First Edition OS 1:10,560 Leicestershire sheet XXX.SE, surveyed 1884, published 1892.

Figure 16. Second Edition OS 25" to 1 mile Leicestershire sheet XXXIII.I5, published 1904.

Figure 17. Ordnance Survey 25" to 1 mile Leicestershire sheet XXXIII.I5, published 1930.

Figure 18. Ordnance Survey 25" to 1 mile Leicestershire sheet XXXIII.I5, published 1960.

Figure 19. Ordnance Survey 1:10000 SK 70 SE, published 1987.

Figure 20. Ground Floor Plan: Extract from Martin E Russell (Architects) Survey drawing no. 031075-5a

Figure 21. Lower Ground Floor Plan: Extract from Martin E Russell (Architects) Survey drawing no. 031075-4a

Figure 22. First Floor Plan: Extract from Martin E Russell (Architects) Survey drawing no. 031075-6a

Figure 23. Second Floor Plan: Extract from Martin E Russell (Architects) Survey drawing no. 031075-7a



Figure 1. Sketch of Launde Abbey from the version of the Whatborough Map in the LLRRO (ref:PP282).

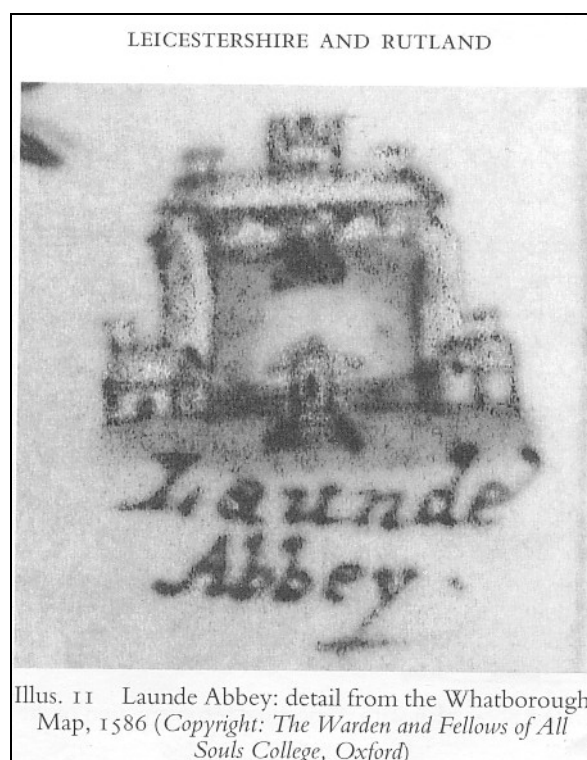


Figure 2. Sketch of Launde Abbey from the version of the Whatborough Map reproduced in Schadla-Hall, Green & Liddle (2003).

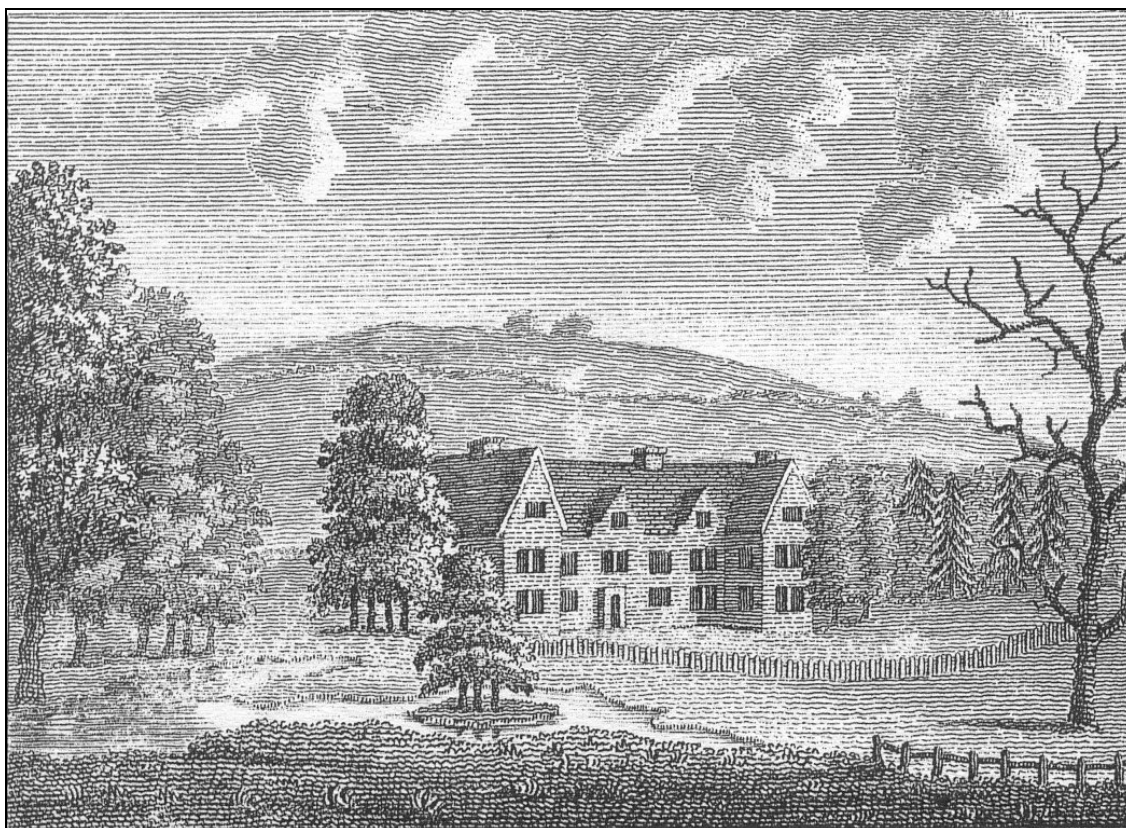


Figure 3. Launde Abbey: West front, from the NW. Illustrated in Throsby (1789).
Note the absence of bay windows to the cross wings and the flat roof to the porch.



Figure 4. Launde Abbey: West front, from the NW. Illustrated in Nichols 1800 (Plate XLIV).
Note the embattled canted bays to the cross wings and the embattled porch.



Figure 5. Launde Abbey: West front, from the SW. Illustrated in Nichols 1800 (at top of Plate XLV).
Note the discrepancy in sill height between the windows of the centre range and canted bays of the cross wings.

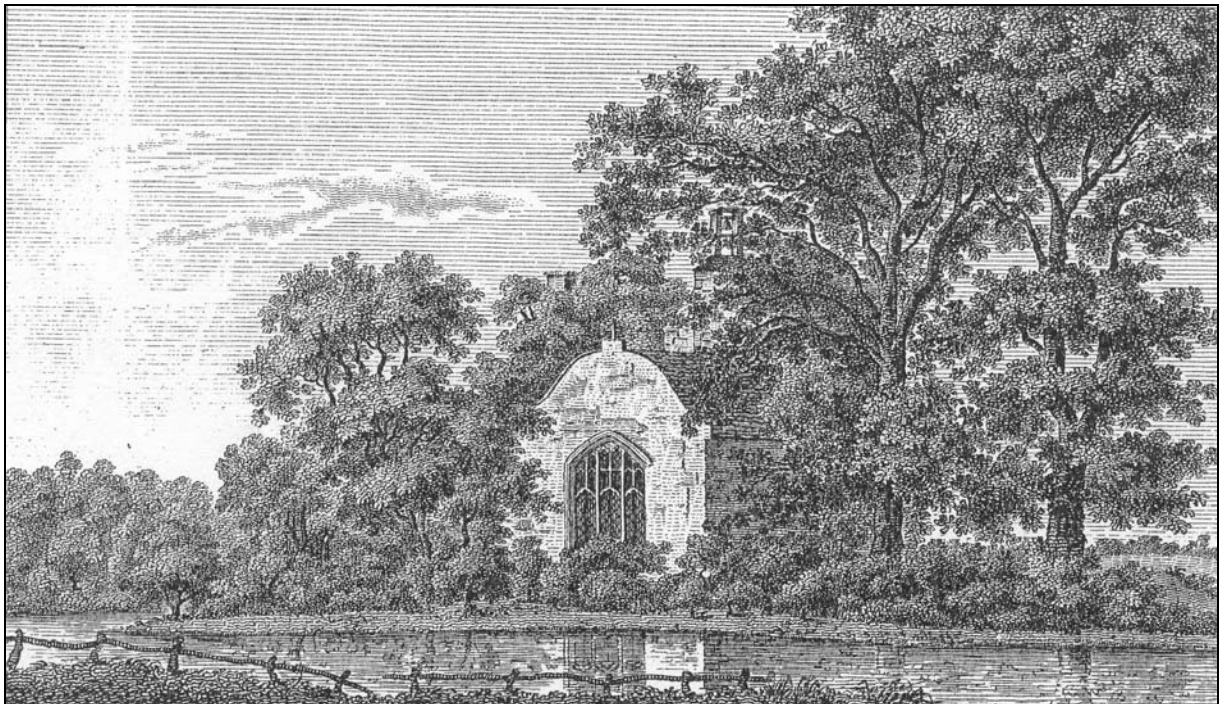


Figure 6. Launde Abbey: East gable of chapel, from the NE. Illustrated in Nichols 1800 (at centre of Plate XLV).
Note the Dutch style gable, the bell-cote partially obscured by trees and the pond in the foreground.



Figure 7. Undated 19th Century engraving in the possession of Launde Abbey.
Note the two-storey addition to the SW corner of the house, with first floor window just visible in the gable end.
This must have been built after c. 1800 and was demolished some time between 1884 and 1904.

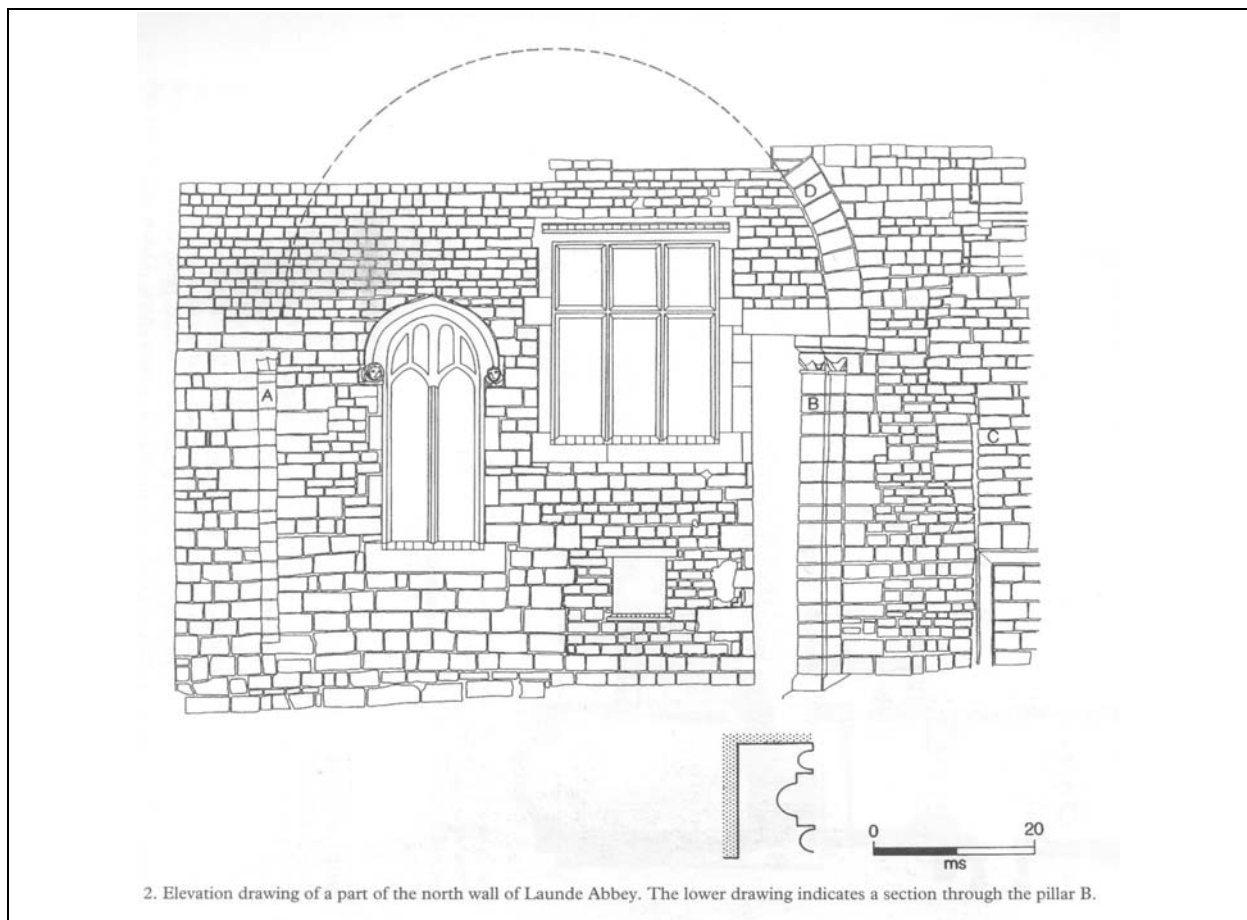


Figure 8. Elevation drawing showing C12 crossing arch embedded in N wall of Launde Abbey (Beavitt 1995).

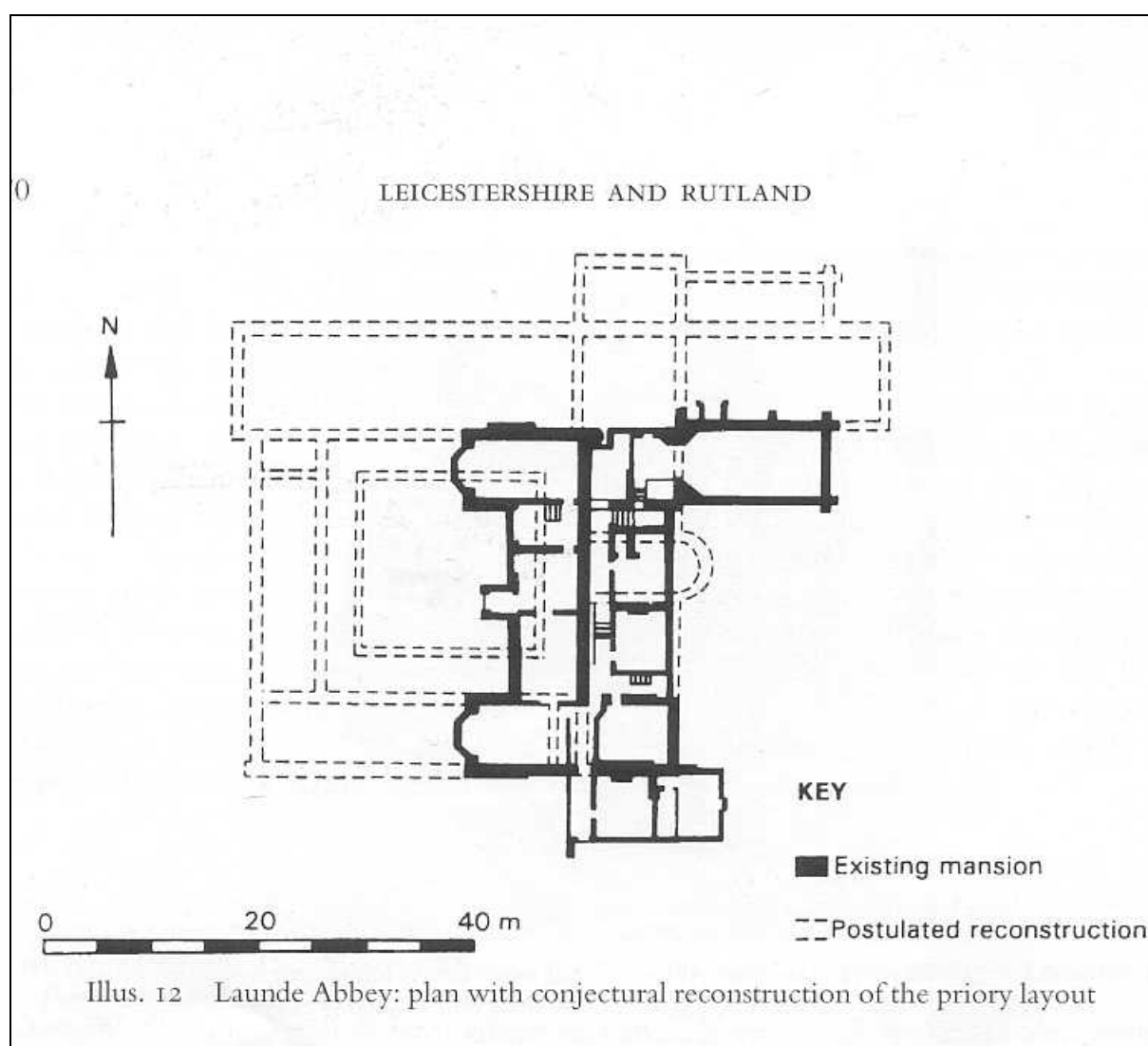


Figure 9. Launde Abbey plan with conjectural reconstruction of the priory layout (Liddle & O'Brien 1995; reproduced in Schadla-Hall, Green & Liddle 2003).

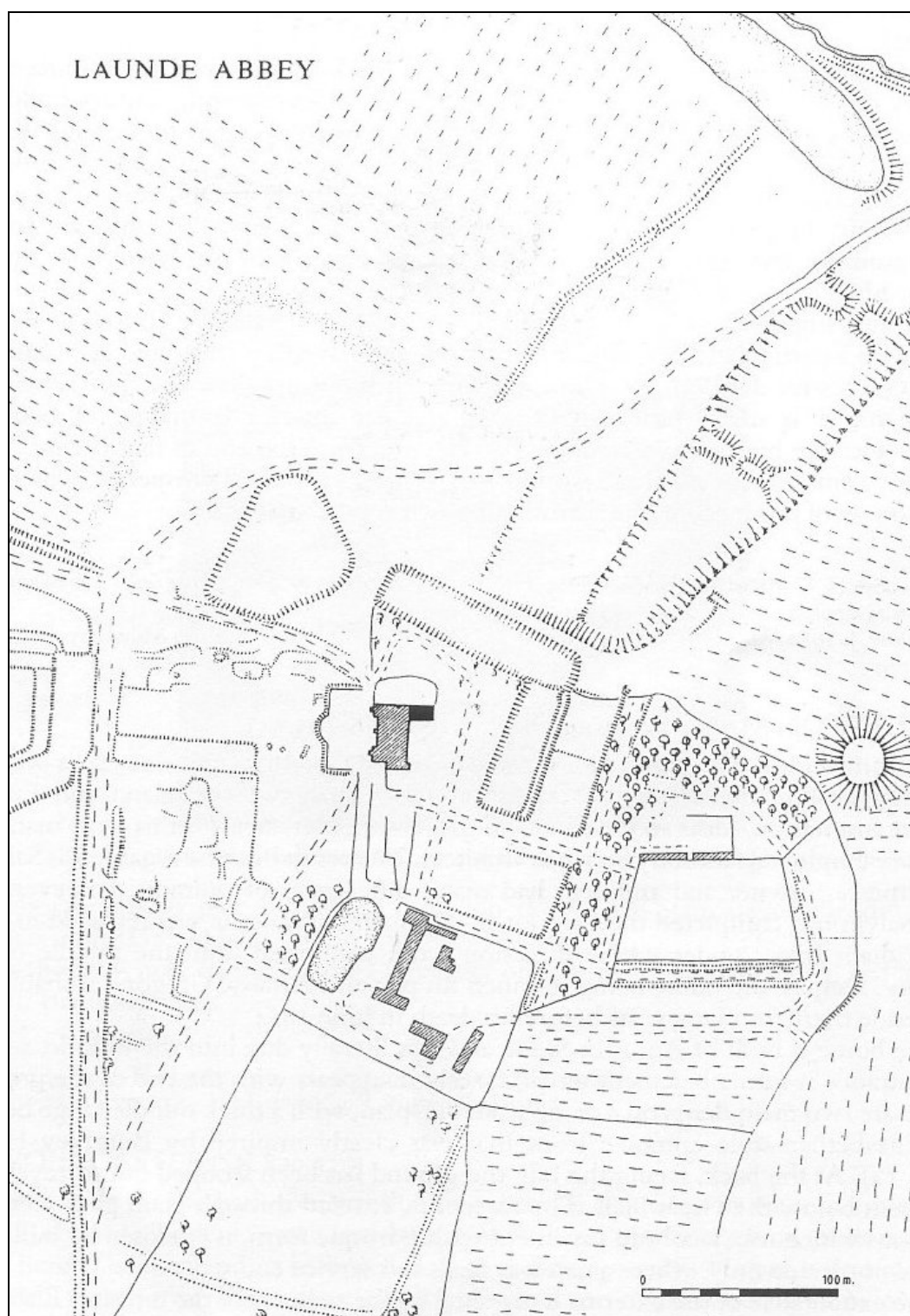
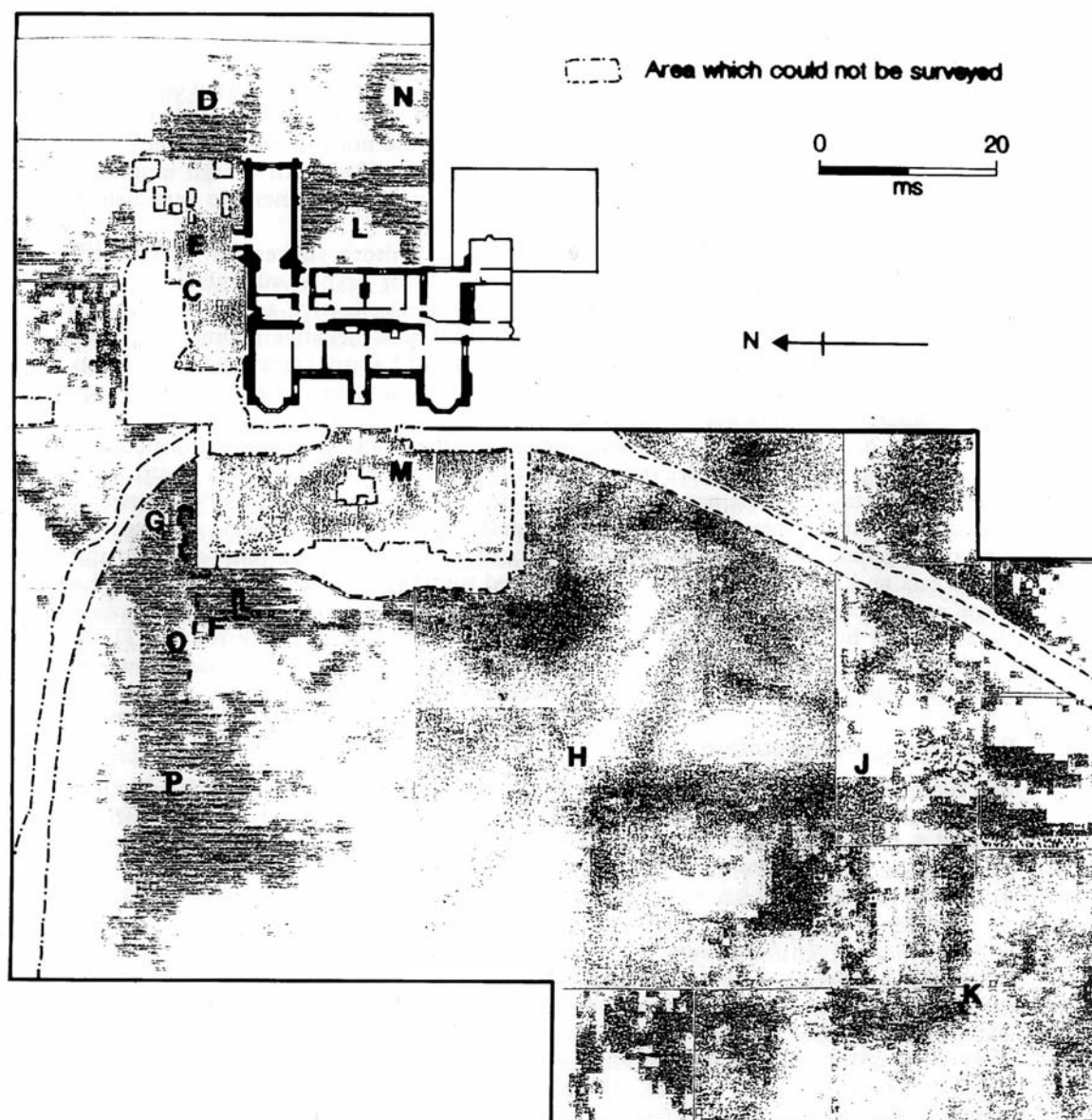


Figure 10. Launde Abbey: Earthwork survey by R.F. Hartley. Published in Schadla-Hall, Green & Liddle (2003)



1. Launde Abbey building plan, geophysical survey 1989-92 with superimposition of walls excavated in 1961.

Figure 11. Geophysical survey results after Beavitt (1995)

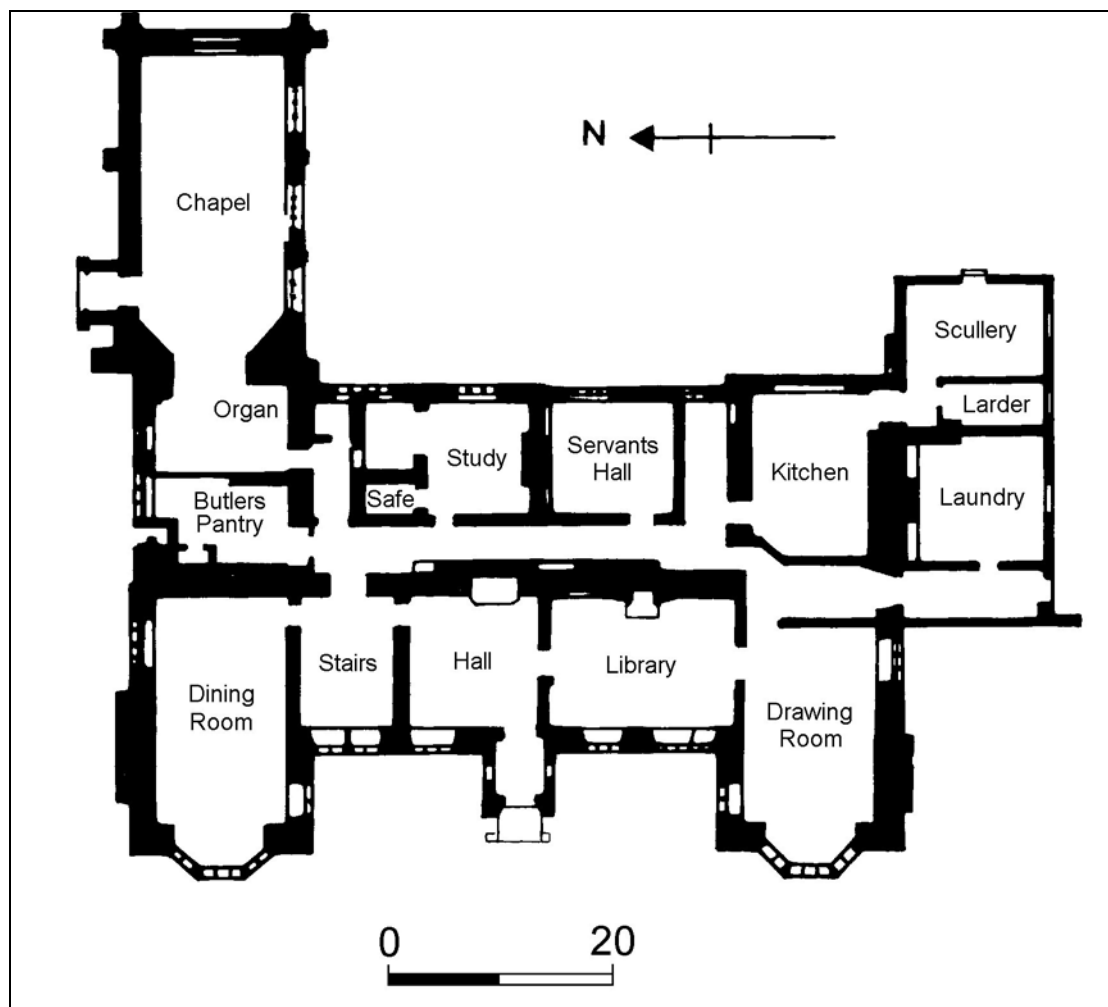


Figure 12. Architects ground floor plan c.1957 with room names (adapted from Beavitt 1995, Fig. 3).

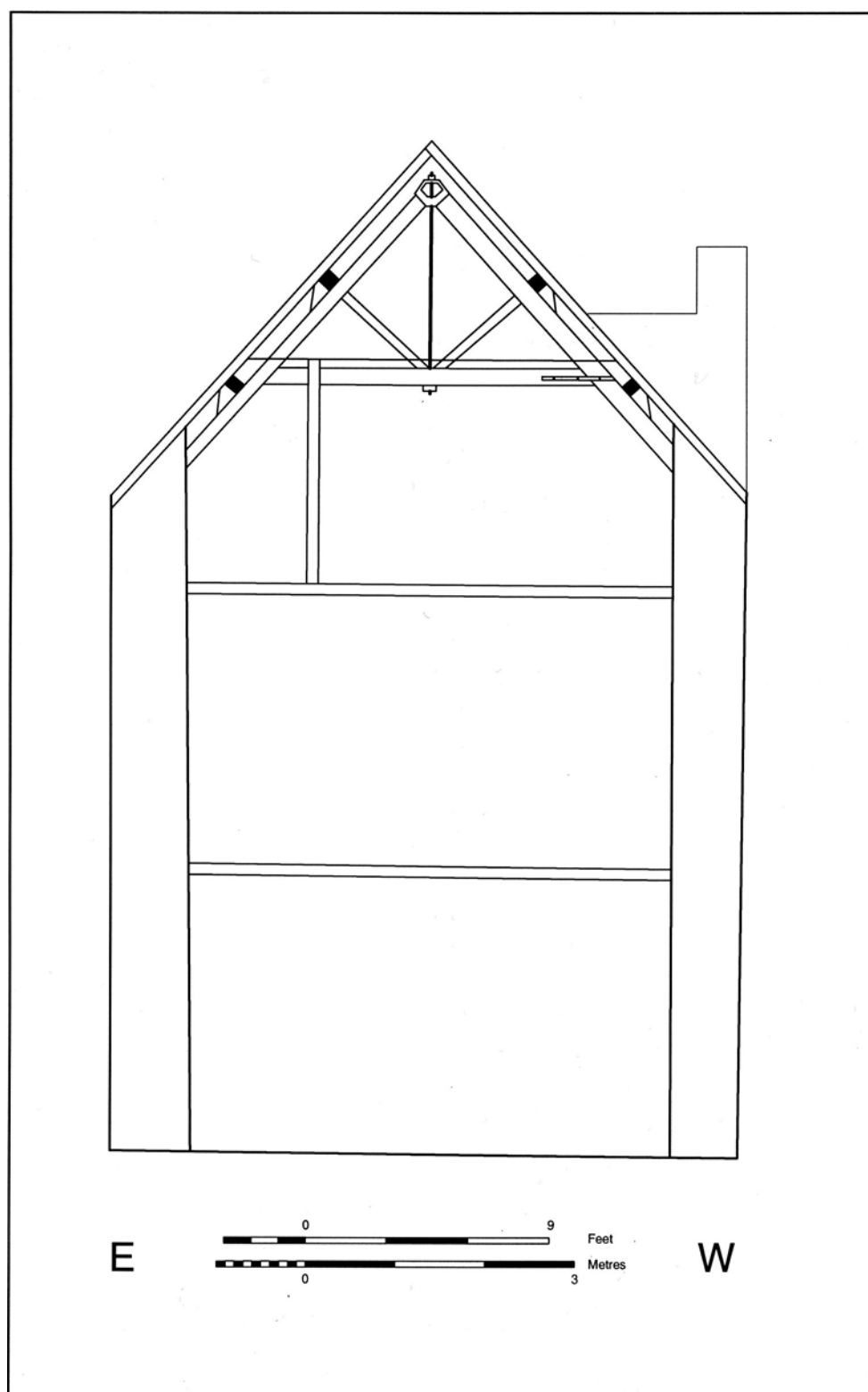


Figure 13. Cross section of western part of centre range illustrating form of roof structure.

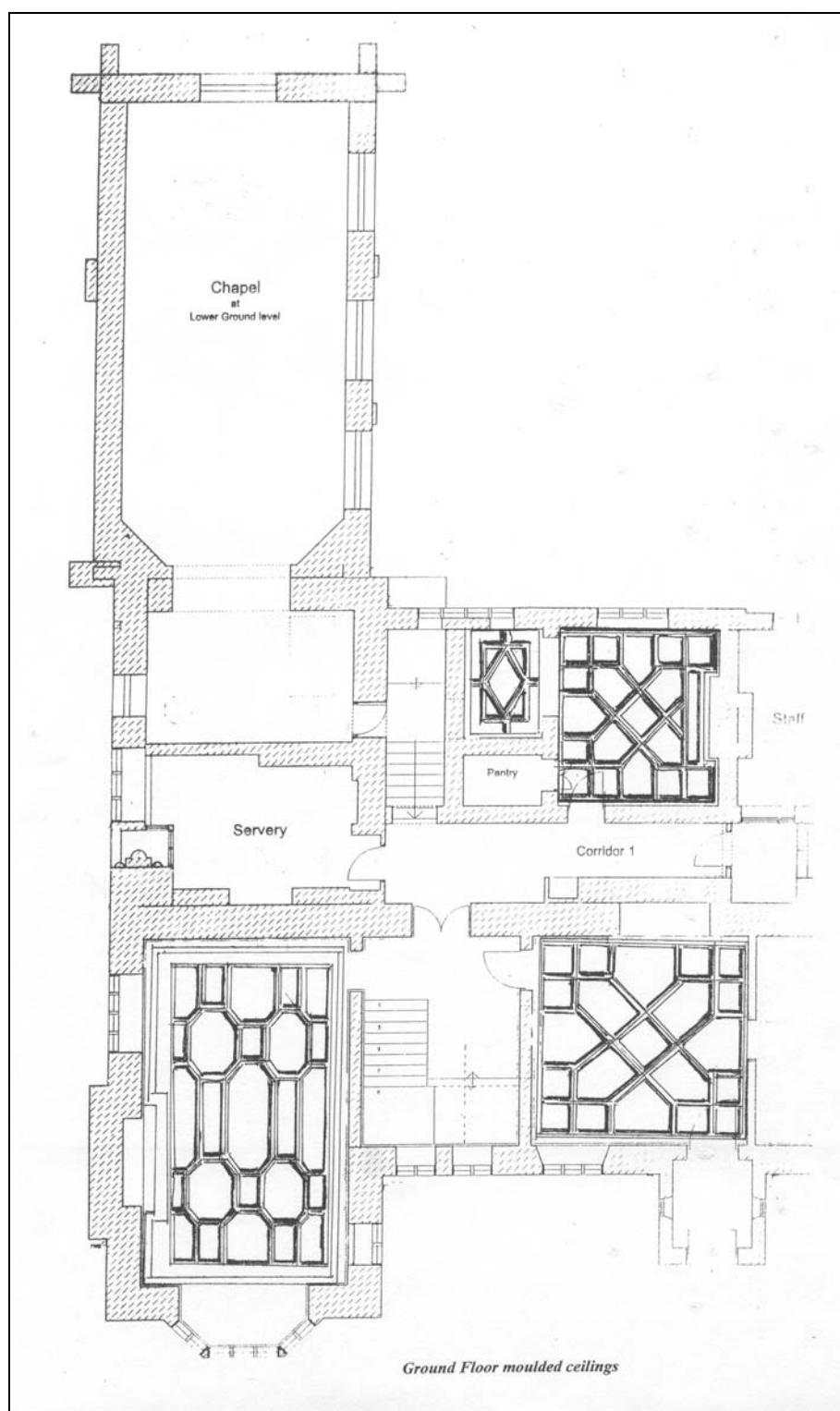


Figure 14. Detail of the moulded plaster decoration on the ceilings of the *Dining Room*, *Entrance Hall* and *Kitchen* areas, showing the use of the Chinese Fret motif in the *Entrance Hall* and *Kitchen* and 17th Century strapwork motif in the *Dining Room* and small area adjacent to the *Kitchen*.

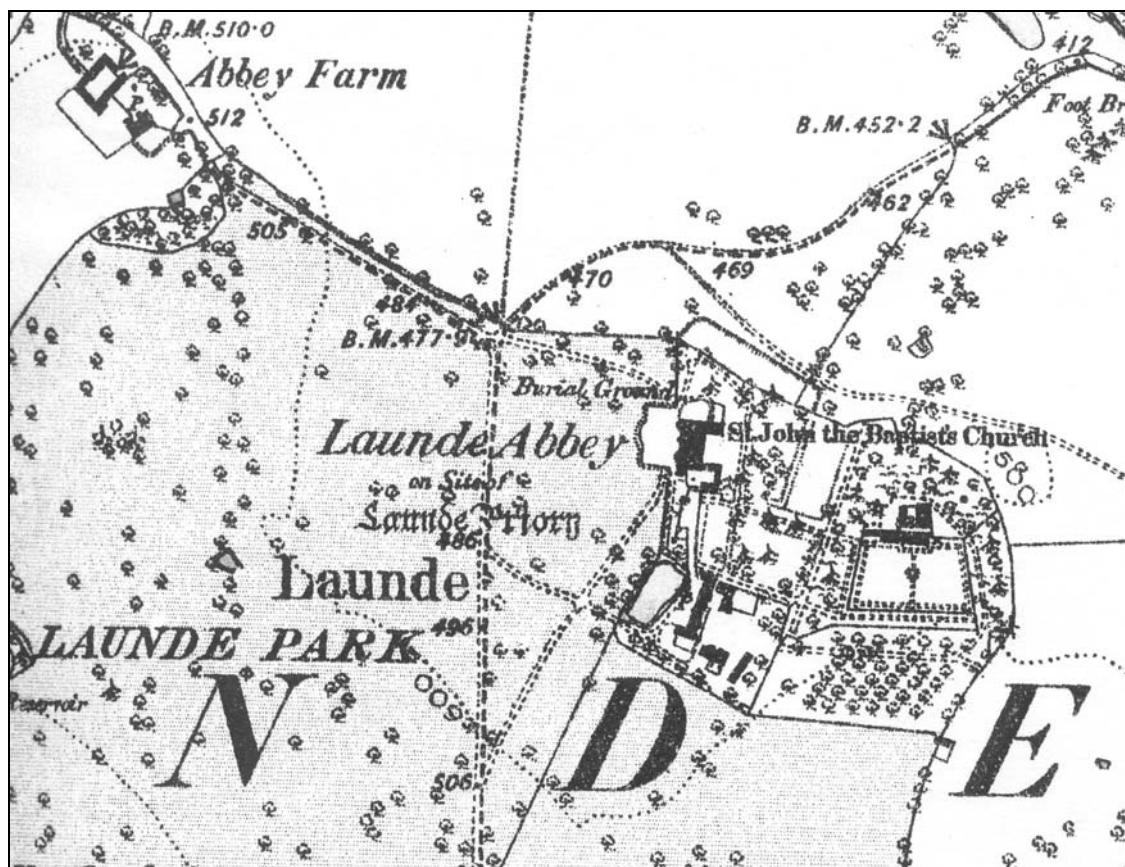


Figure 15. Extract from First Edition OS 1:10,560 Leicestershire sheet XXX.SE, surveyed 1884, published 1892.

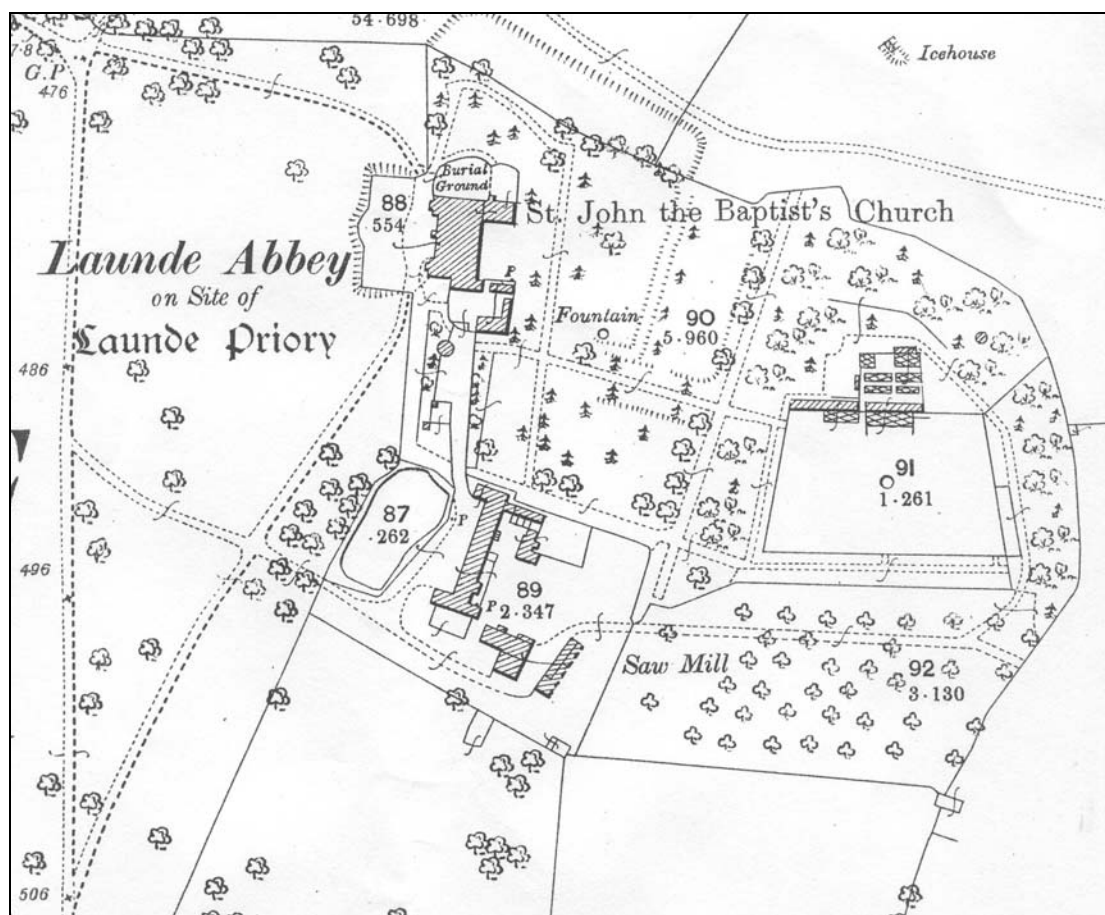


Figure 16. Extract from Second Edition OS 25'' to 1 mile Leicestershire sheet XXXIII.I5, published 1904.

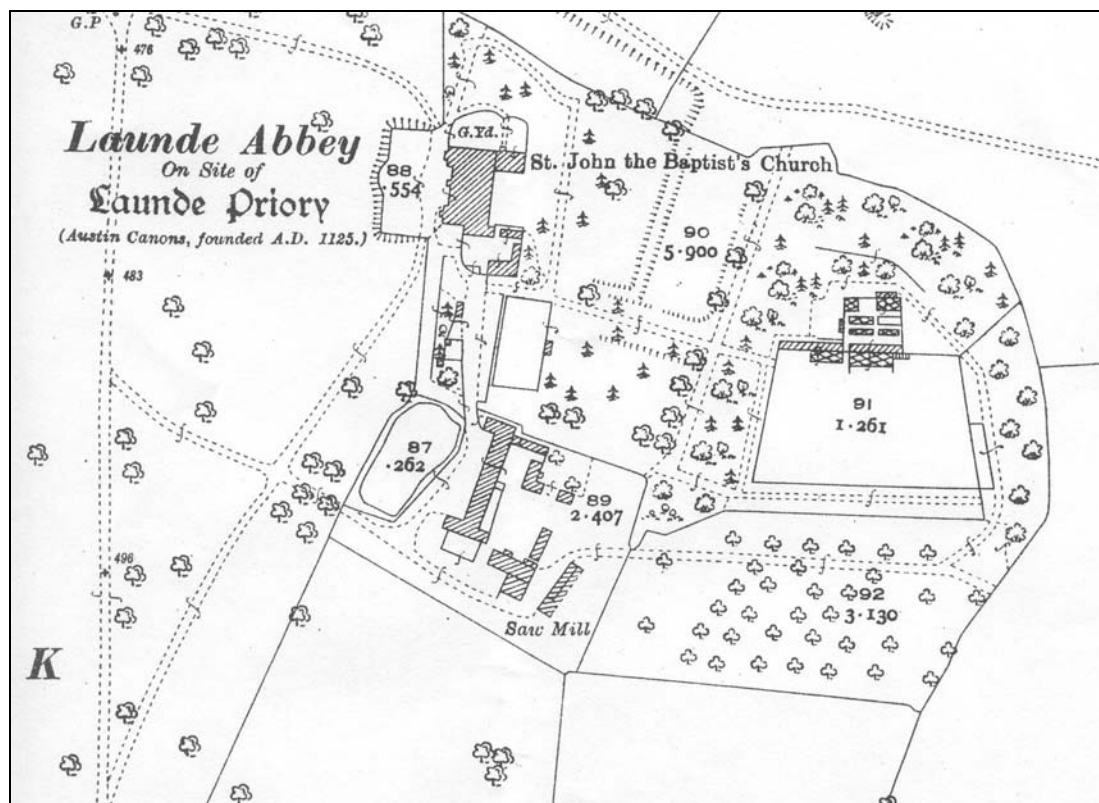


Figure 17. Extract from Ordnance Survey 25'' to 1 mile Leicestershire sheet XXXIII.I5, published 1930.

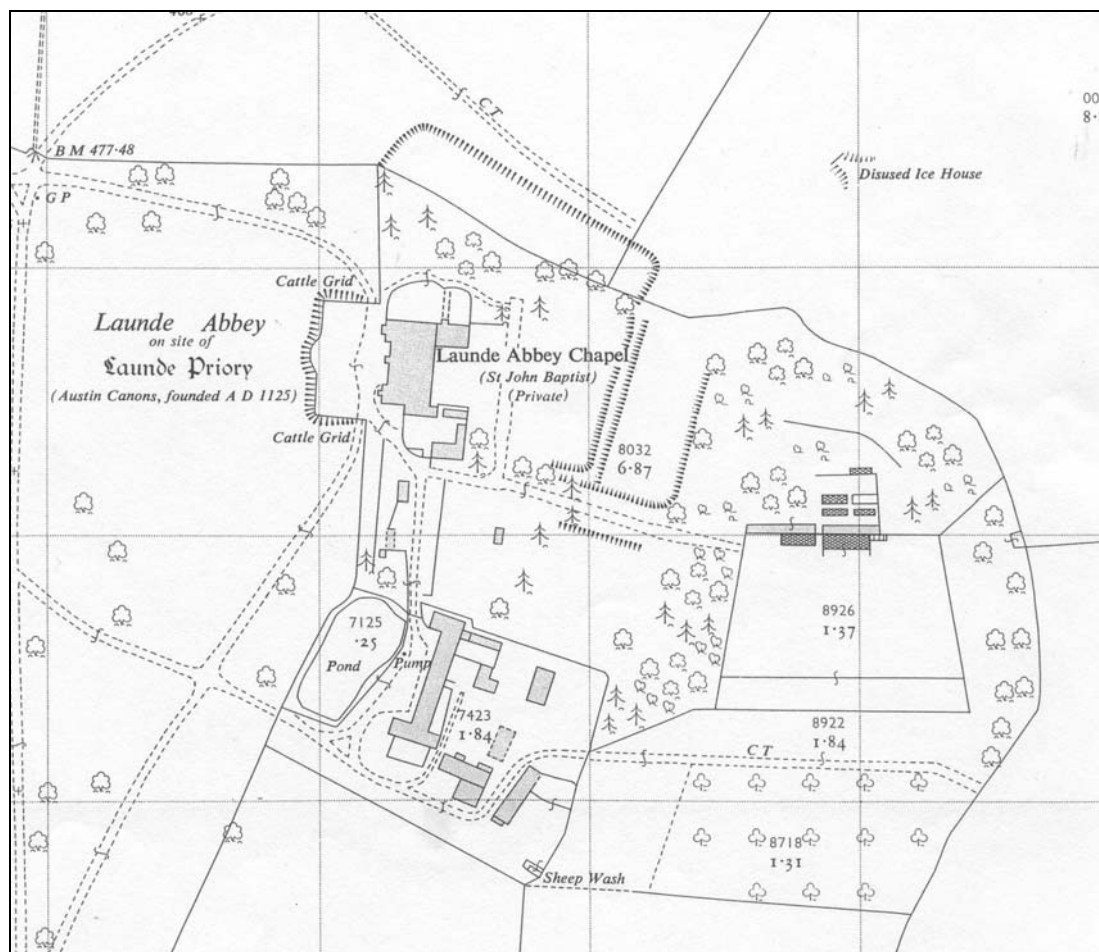


Figure 18. Extract from Ordnance Survey 25'' to 1 mile Leicestershire sheet XXXIII.I5, published 1960.

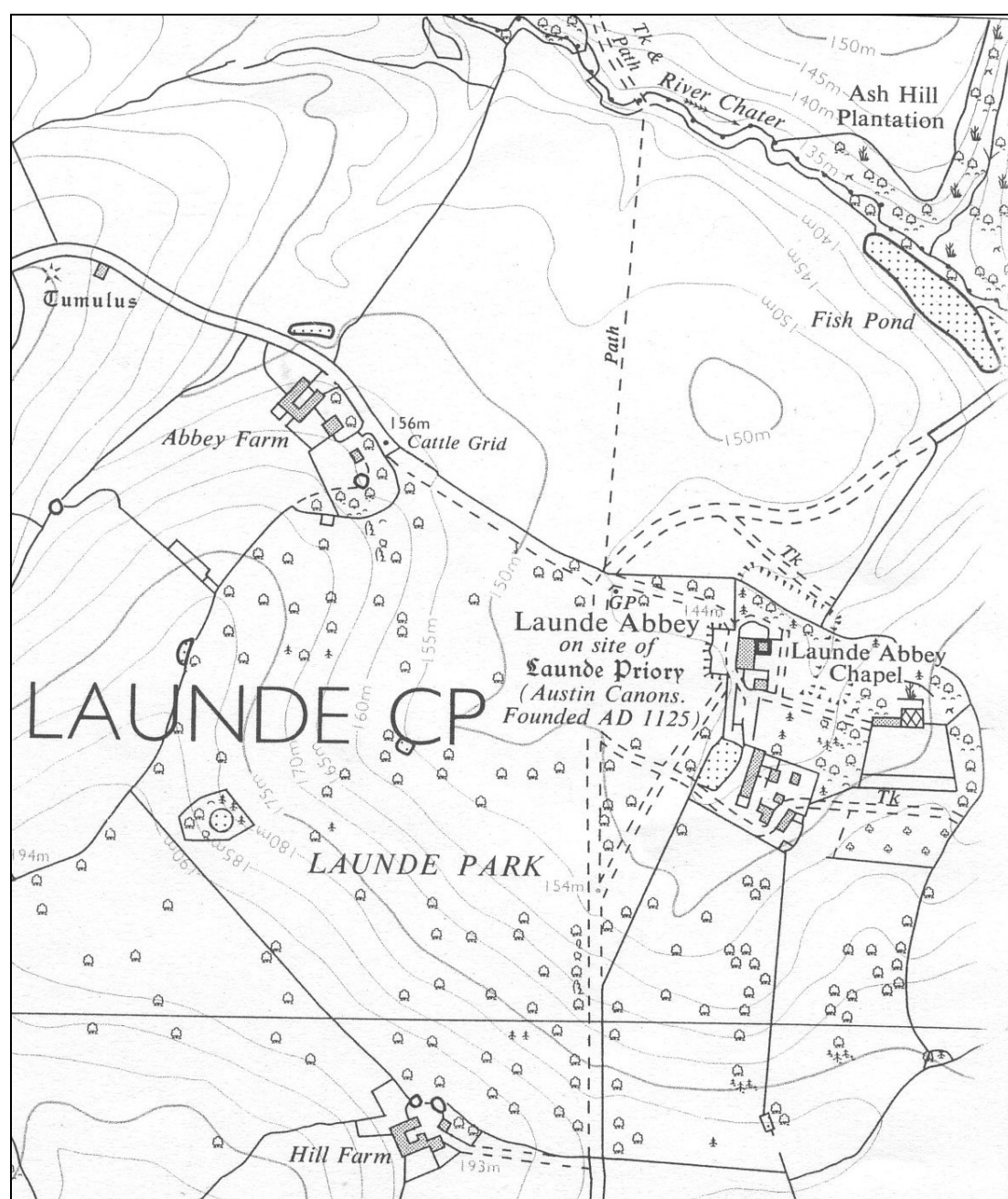


Figure 19. Extract from Ordnance Survey 1:10000 SK 70 SE, published 1987.

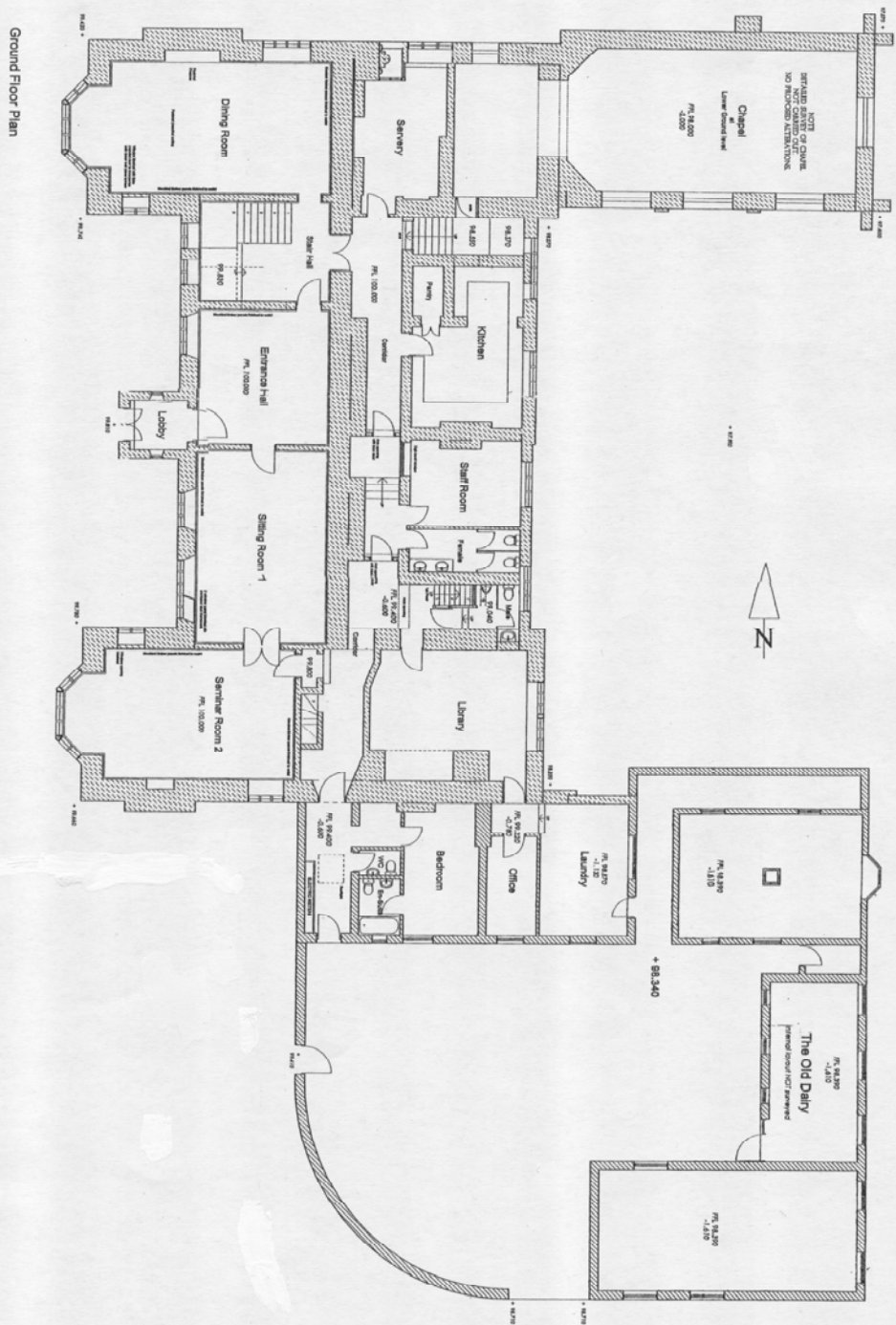
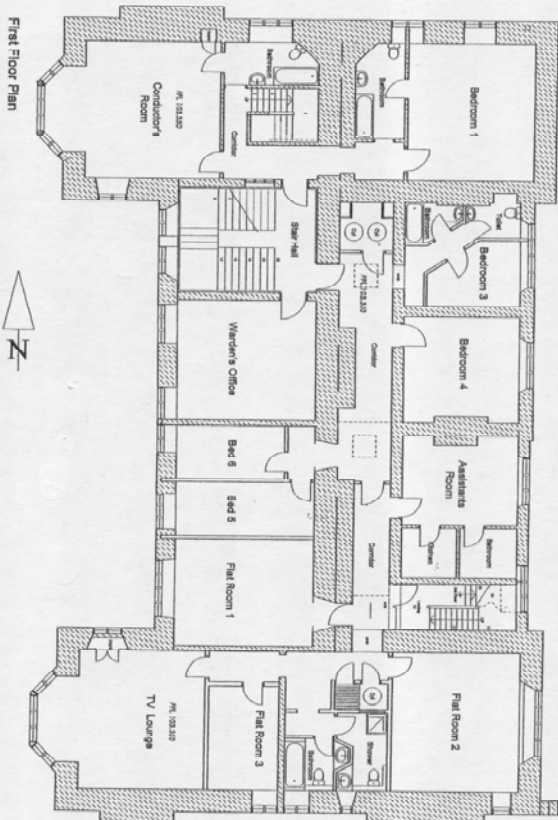


Figure 20. Launde Abbey: Ground Floor Plan. Scale 1:200.
Extract from Martin E Russell (Architects) Survey: Ground Floor Plan
Drawing number:03.1075 - 5a



Figure 21. Launde Abbey: Lower Ground Floor plan. Scale 1:200



First Floor Plan



Figure 22. Launde Abbey: First Floor Plan. Scale: 1:200.
Extract from Martin E Russell (Architects) Survey: First Floor Plan
Drawing number 031075 - 6a

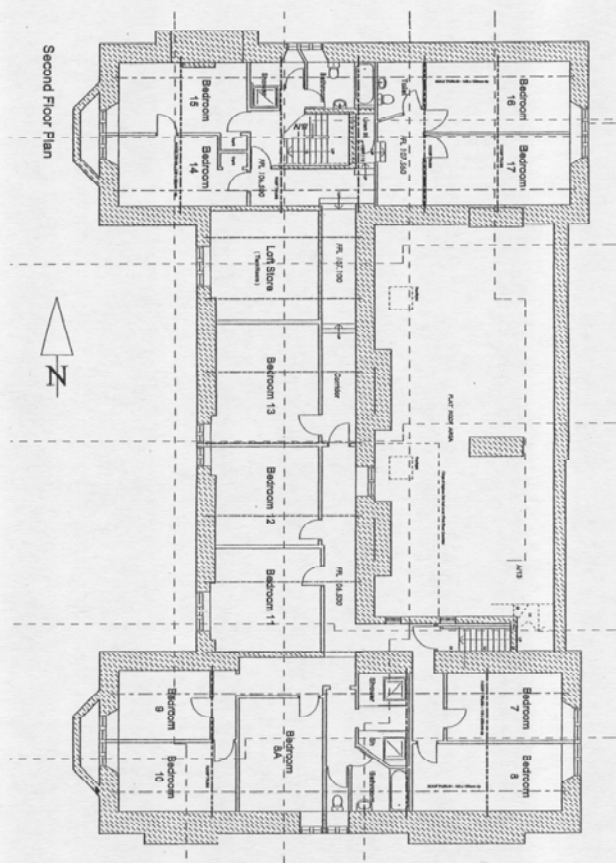


Figure 23. Launde Abbey: Second Floor Plan. Scale: 1:200.
Extract from Martin E Russell (Architects) Survey: Second Floor Plan
Drawing number: 031075 - 7a



Plate 1. Launde Abbey: West front and ha-ha with urns.



Plate 2. Launde Abbey: West front and ha-ha, looking SE.



Plate 3. Launde Abbey: East elevation. Part of former fishpond, now sunken garden, at bottom of frame.



Plate 4. Launde Abbey: Norman arch & responds embedded in the north wall, *Chapel* to left.



Plate 5. Launde Abbey: South elevation & brickwork scar of demolished C19 range at SW corner (behind statue)



Plate 6. Launde Abbey: C19 service range on south side of the house, currently *Laundry, Office & Bedroom*



Plate 7. Launde Abbey: C19 service ranges. On left former Laundry, on right *Old Dairy*, looking NE



Plate 8. Launde Abbey: Polychrome banded stone wall forming north boundary to service courtyard, looking S



Plate 9. Launde Abbey: Mid C18 stable block. West front, looking NE. Pond & well out of sight to left of frame.



Plate 10. Launde Abbey: Single storey range to E (rear) of stable block at N end, looking N.



Plate 11. Launde Abbey: Early C19 walled kitchen garden and glasshouses, looking NE.



Plate 12: Launde Abbey: Brick built sheds/bothies on N side of walled kitchen garden, looking SE.



Plate 13. Launde Abbey: Entrance to early C19 icehouse (now part of neighbouring property).



Plate 14. Launde Abbey: 'Oxford and Cambridge' building, looking SW, on site of earlier circular building.



Plate 15. Medieval arch in N wall of *Servery*, possibly opening into cloister walk of Priory Church, looking N.



Plate 16: *Chapel* interior looking west towards *Vestry* showing doorway inserted c. 1957. Compare with Plate 42



Plate 17. *Servery* occupying part of S transept of Priory Church, looking N (into crossing).



Plate 18. Detail of splay mullion window in 'spine wall' of the house in lower ground floor *Library Area*. Showing glazing bars still in situ and rubble fill behind.



Plate 19. Detail showing section of roundstone cobbling in cellar floor adjacent to 'spine wall' (*Library Area*).



Plate 20. South-east gable showing the rising series of early C16 windows, particularly the paired, six-light ground floor window.



Plate 21. Fireplace with extended, low arch form, of characteristic late C16 form in the present *Library*, which is identified as the Kitchen on earlier plans.



Plate 22. First floor C16 window in the south-east gable showing the capital detail missing.



Plate 23. West front of Launde Abbey from SW. The ironstone sections set into the lower part of the ground floor windows of the main range can be seen as a dark band at the base of the windows.



Plate 24. Detail of C17 fragment of panelling in the wall-cupboard in the first floor, SW room (*TV Lounge*).

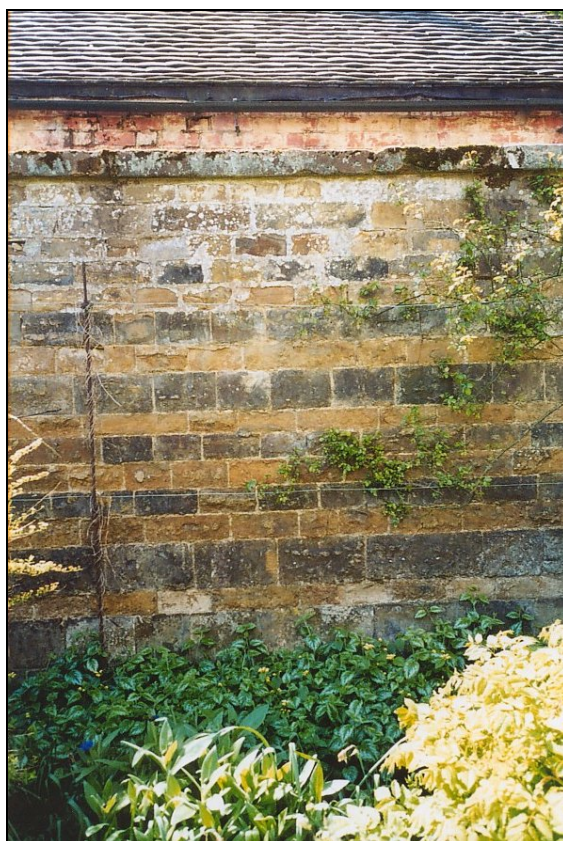


Plate 25. Detail of polychrome banded stone wall in garden at base of the SE gable wall.



Plate 26. Detail showing staircase with two twisted and one fluted baluster to each tread, carved newel and ramped handrail.

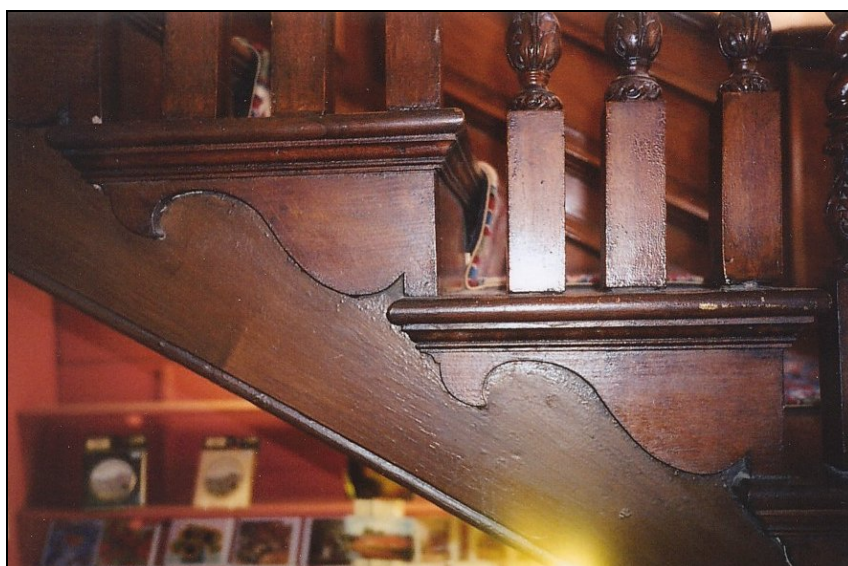


Plate 27. Detail of stringer form on staircase.



Plate 28. East (rear) elevation of house, showing the two distinct types of stone and chimneys in the work attributed to Thomas Rickman, 1829.



Plate 29. *Sitting Room 1* door showing eight panelled door with reeded detailing, decorative paterae and Gothic decoration in the rounded head above the door.



Plate 30. Detail of the plaster moulding in the south-west ground floor room (*Seminar Room 2*).



Plate 31. Section of the Entrance hall panelling showing mixture of strap motif panels with arcading, gadrooning and serpent motifs at frieze level.



Plate 32. Detail of C19 rails and stiles with sections of C17 set into them and C19 Flemish carved vignettes planted on them. The arcading and the carved frieze are also C19 compilations.



Plate 33. Fireplace in *Dining Room* showing as two distinct sections with the lower section, including the 4-centred arch being a C19 Gothic replication and the section dated 1689 which has frieze detailing at its top, wrongly relocated to its present low level.



Plate 34. Service staircase with stick balusters and cut and chamfered newels with faceted finials.



Plate 35. Present *Staff Room*, formerly Servants' Hall, with fitted furniture and catchlight.



Plate 36. View through the roof of the main front of the house, showing the bolted, deal trusses with cast-iron yoke at the apex.



Plate 37. Launde Abbey west front and north wing. George Henton, May 10 1905.



Plate 38. Launde Abbey: Interior of Chapel. George Henton, May 10 1905.

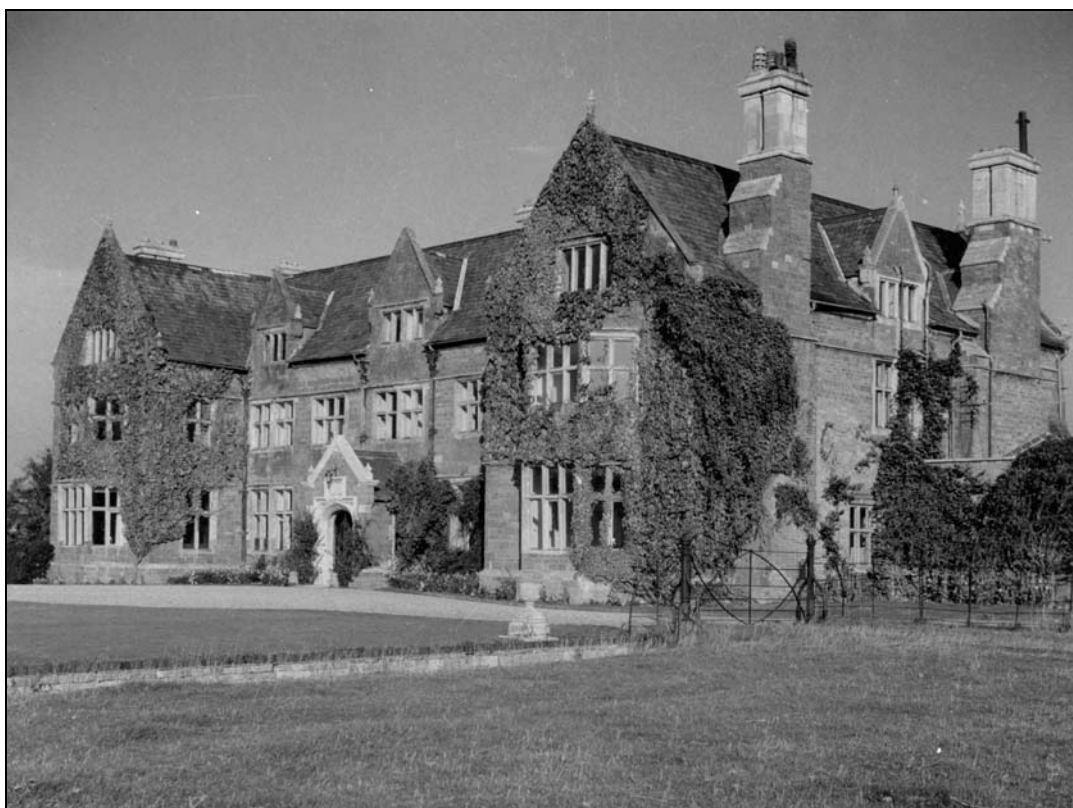


Plate 39. Launde Abbey west front, looking NE. F. Lumbers 1957.



Plate 40. Launde Abbey: East (rear) elevation & chapel, looking WNW. F. Lumbers 1957.



Plate 41. Launde Abbey: Chapel exterior, looking NW. F. Lumbers 1957

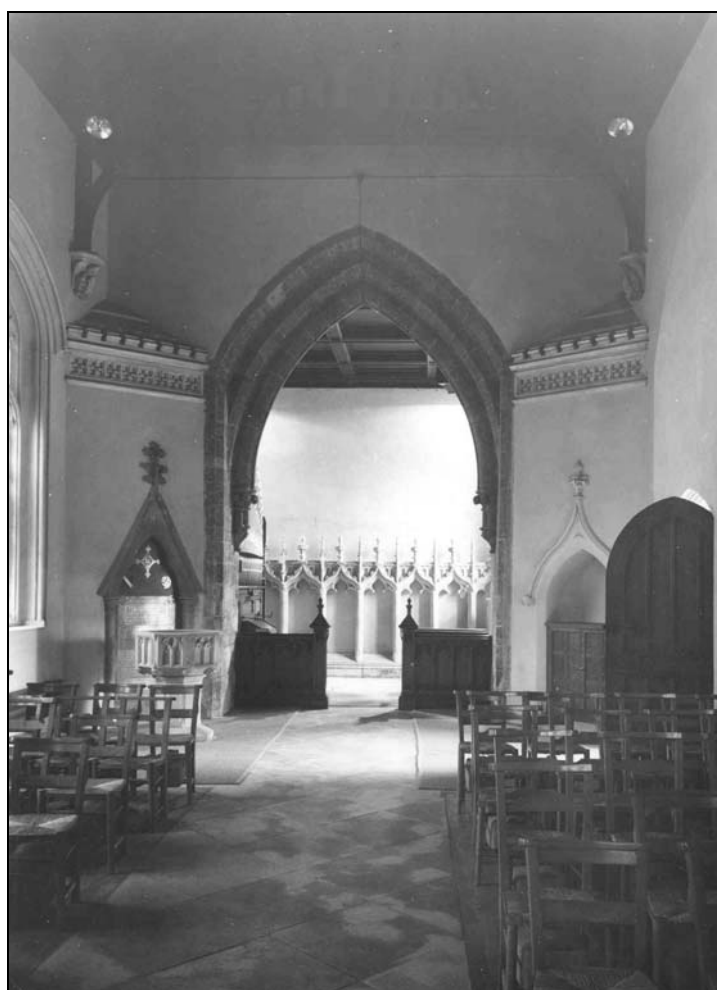


Plate 42. Launde Abbey: Chapel interior, looking W. F. Lumbers 1957. Compare with Plate 16.



Plate 43. Launde Abbey: Fireplace in present *Sitting Room*. Frank Lumbers 1957.



Plate 44. Launde Abbey: Staircase. F. Lumbers 1957.



Plate 45. Launde Abbey: Stable block west front, looking NE. F. Lumbers 1957. Note arrangement of door and window openings prior to alteration in 1986.



Plate 46. 1948 Cambridge University Aerial Photograph. Ref: AZ 64, 5 July 1948, Launde Abbey, Leicestershire 122/797044



Plate 47. 1949 Cambridge University Aerial Photograph. Ref: CU4, 26 June 1949, Launde Abbey, Leicestershire 122/797044



Plate 48. 1950 Cambridge University Aerial Photograph. Ref: RAF/A/107, June 1950, Launde Abbey, Leicestershire 122/797044