

**30-44 Shilton Road, Barwell, Leicestershire,
Formerly Moulds and Moore Boot Manufacturers:
Photographic Survey**

Neil Finn

For Modern Apartments

Checked by Project Manager

Signed:**Date:**.....

Name:

University of Leicester Archaeological Services

Report 2006-078 ©2006

Contents

1. Introduction	1
2. Historical Background to the Barwell Boot & Shoe Industry	1
3. Description of the Building	2
4. Chronology	3
5. Commercial Directories	4
6. Former Bakehouse	4
7. Publication and Archive	4
8. Bibliography and Sources	5
Appendix: Catalogue of Photographs	6

Plates

- Plate 1. 30-44 Shilton Road. Frontage range, principal (north) elevation (C1)
Plate 2. 30-44 Shilton Road. Frontage range, from the north-east (C5)
Plate 3. 30-44 Shilton Road. Frontage range, contemporary rear range and later additions at NW corner (C6)
Plate 4. 30-44 Shilton Road. Rear (south) elevation, from left to right gabled Block B, Block C and Block G (C7)
Plate 5. Former bakehouse to the rear of 12 Queen Street, Barwell, shortly before demolition (C11)
Plate 6. Moulds & Moore sign at NW corner of frontage range (Block A), now in first floor toilet Block D (C12)
Plate 7. Terracotta decoration to external W elevation of Block A, now within Block D staircase (C26)
Plate 8. Frontage range (Block A), first floor interior looking towards NW corner (C28)
Plate 9. Frontage range (Block A), first floor interior looking E, Shilton Road to left (C30)
Plate 10. Frontage range (Block A), second floor interior looking E, showing queen-post roof structure (C35)
Plate 11. Original second floor windows in S (rear) elevation of Block A, now overlooking Block C (C39)
Plate 12. Frontage range (Block A), queen-post roof structure (C37)
Plate 13. Ground floor interior of Block B, looking S (C14)
Plate 14. Ground floor interior Block B, former window in E wall converted to door into Block C beyond (C18)
Plate 15. First floor interior of Block B looking SW, occupied by H.W. Slimm & Sons at time of survey (C32)
Plate 16. Second floor interior, Block B open onto Block C, looking east (C41)
Plate 17. Second floor interior of Block B showing queen-post roof structure (C42)
Plate 18. Ground floor interior of Block C, looking N to infilled windows in rear elevation of Block A (C20)
Plate 19. Ground floor interior of Block C, looking towards lift shaft in SE corner (C22)
Plate 20. First floor interior of Block C, looking N towards rear elevation of Block A (C33)
Plate 21. Single storey Block E, interior of former reception/office, looking E (C24)

Figures

- Figure 1. Location Plan. Based on 1992 Ordnance Survey 1:2500 map sheet SP4496
Figure 2. Site Plan (not to scale) showing the location of Blocks A-H and bakehouse
Figure 3. Photo locations/orientation. Ground Floor. Not to Scale
Figure 4. Photo locations/orientation. First Floor. Not to Scale
Figure 5. Photo locations/orientation. Second Floor. Not to Scale

30-44 Shilton Road, Barwell, Leicestershire Formerly Moulds & Moore Boot Manufacturers: Photographic Survey

1. Introduction

University of Leicester Archaeological Services (ULAS) was commissioned by Modern Apartments to undertake a photographic survey of factory buildings at 30-44 Shilton Road, Barwell, Leicestershire LE9 8HA (National Grid Reference SP 445 968). The survey was required as condition 15 of Planning Permission in respect of application number 04/00336/FUL for the conversion of this former boot and shoe factory to residential use.

The photographic survey was completed in accordance with a brief issued by the Senior Planning Archaeologist, Historic and Natural Environment Team, Environment and Heritage Services, Leicestershire County Council, in his capacity as archaeological advisor to the local planning authority, issued at the request of the Conservation Officer, Hinckley and Bosworth Borough Council. The building is located within the Barwell B Conservation Area. It is not listed.

The photographic record covered items 1-6 as defined in the Royal Commission on the Historic Monuments of England guidelines *Recording Historic Buildings: A Descriptive Specification* (RCHME 1996). The photographs are catalogued in the Appendix and located on Figures 3-5; selected frames illustrate this report.

The factory consists of a number of distinct structural elements, identified in the following description as blocks A-H and located on Figure 2. The survey was undertaken on 18.12.2004 at which time various parts of the building were still in use. Access to the ground floor of the frontage range (Block A) was not available.

2. Historical Background to the Barwell Boot and Shoe Industry

Abstracted from Shaw (1987), Johnson (1996) and Hinckley and Bosworth Borough Council (2000).

By the 1840s the principal trade in Barwell and the neighbouring village of Earl Shilton was framework knitting, manufacturing stockings on hand frames in the home or in small back workshops. Prior to this market gardening had been the chief occupation. When Civil War broke out in America in 1861 the northern states blockaded southern ports and exports of cotton dried up. The stocking frame trade in this part of Leicestershire was hit hard. Despite something of a recovery in the years between 1865-75, steam power was starting to be applied to hosiery work and employment based on hand frames at home was coming to an end.

In the 1860s Leicester boot and shoe manufacturers moved part of their production process to the area. Leather uppers were cut and closed in Leicester factories with village outworkers making and finishing the shoes in their homes, an arrangement known locally as 'basket-work'. From the late 1880s the process was centralised

within new factories built within the villages. By 1896 there were 11 shoe manufacturers in Barwell and 12 in Earl Shilton.

The industry prospered in the early part of the 20th century, supplying boots to the military during the 1914-18 war. At their peak in the early 1950s, the factories of Barwell, Earl Shilton and Hinckley produced over 7 million pairs of shoes per year. Subsequently however the industry declined in the face of foreign competition and the factory buildings were put to other uses or else demolished. The factory at 30-44 Shilton Road, Barwell was formerly the premises of Moulds and Moore boot and shoe manufacturers.

3. Description of the Building

3.1 Block A

A three storey block of 6 bays fronting onto Shilton Road, constructed between 1884 and 1903 (Plates 1-2). Brick-built with decorative terracotta bands at first and second floor sill levels and at the eaves (Plate 7). Ground and first floor windows are metal-framed with stone sills and brick segmental arch heads. At second floor level there are paired timber sashes with stone heads, sills and mullions. The north-west corner is angled, with similar first and second floor windows on the angle. Adjacent to this, on the frontage, are narrow blind windows on all three floors. On the first floor there is timber canted bay, possibly a later addition. On the angle, between ground and first floors is a stone plaque inscribed:

MOULDS & MOORE, L^{TD}
BOOT MANUFACTURERS

This is now enclosed within a later addition (Plate 6). The east elevation has a large timber loading door on the ground floor and smaller loading doors serving the floors above. Upper floor windows on this side match those of the principal elevation. The hipped, slate-covered roof is supported on 5 queen-post trusses, as illustrated in Plate 12. Internally there is an open-plan working area on each floor with no evidence for early fixture or fittings (Plates 8-11). The first floor bay window possibly suggests an office in this location at some time, though no evidence now remains of this.

3.2 Block B

Four bay rear wing at the west end of Block A and contemporary with that range. The west elevation has similar first and second floor windows, terracotta bands and eaves course to the Shilton Road elevation of Block A (Plate 3). The gabled south (rear) elevation has two metal-framed segmental arch-headed windows on each floor, plus a narrower central window of similar form on the first floor (Plate 4). Original window openings in the east elevation were enlarged when the adjacent block C was constructed (Plates 13-14). On the second floor the wall between Blocks B and C was completely removed (Plate 16). Internally there is an open plan arrangement on each floor with no evidence of any earlier fixtures and fittings (Plates 13, 15 & 16). The first and second floors of this range were occupied by H.W. Slimm and Sons, specialist clothing manufacturers, at the time of the survey, former owners of the building. The roof structure consists of 3 queen-post roof trusses of similar form to those of the frontage range (Plate 17).

3.3 Block C

A three storey, flat-roofed, steel-framed addition on the east side of Block B, at the rear of Block A, constructed around the middle of the 20th century (after 1929 and before 1962 based on OS map evidence). The south and east elevations are mainly glazed (Plate 4). There is a lift to all floors at the south-east corner (Plate 19). A steel-framed fire escape serves doors at each upper level on the south elevation. There is a ground floor loading door on the east side (Plates 18 & 19). On the second floor this range is open onto the adjacent Block B (Plate 16).

3.4 Block D

Located at the north-west corner of the frontage range (Block A), this is a combined entrance, staircase and sanitary block added after 1929 (possibly at the same time as Block C) (Plate 3). It is brick built. The concrete (fireproof) staircase serves all three floors and has a flat roof. On the north side of this a revised entrance onto Shilton Road squares off the angled corner of the original building. This has a timber panelled door with over-light. Above the entrance area are male and female toilets, within one of these the Moulds and Moore plaque is visible (Plate 6). This section of Block D also has a flat roof.

3.5 Block E

A brick-built office/reception block, with flat roof, of one storey plus a cellar beneath. The cellar was flooded at the time of the survey. This is located on the west side of Block D and may be slightly later in date than that range, though still extant by 1962 (Plate 3). Interior details are limited to panelled and glazed/panelled doors and a hatch opening onto the reception area (Plate 21).

3.6 Block F

This is a single-storey workshop range located to the south of blocks D & E, on the west side of Block B. This had a steel-framed north light roof which had been largely dismantled prior to the survey.

3.7 Block G

A single-storey brick-built range with flat concrete roof, located to the rear of Block F, along the western boundary of the site. This range consisted of a series of external stores and had been partially demolished before the survey. It was extant by 1962.

3.8 Block H

A small 3-storey, brick-built, flat-roofed range on the east side of Block C and likely to have been built around the same time (Plate 4). This accommodated washrooms and toilets.

4. Chronology

According to the *Barwell and Earl Shilton Boot and Shoe Trail* (2000), Moulds and Moore was established in 1920 and manufactured boys, girls and ladies shoes. The factory at 30-44 Shilton Road was constructed before this date, however; between 1884 and 1903 based on Ordnance Survey map evidence. Blocks A and B appear to be contemporary forming the main elements of the original factory. A range of building on the east side of block B, shown on early maps but no longer extant, was possibly a combined stair and toilet block since the present staircase is certainly a

later modification (see below). This range was presumably demolished when block C was constructed around the mid 20th century, certainly before 1962 based on map evidence. Block D can be seen as part of the same episode of modification; this combined a new entrance, first floor sanitary accommodation and a staircase serving all floors. On the west side of this was a single-storey office/reception, Block E, possibly slightly later in date than Block D but also extant by 1962, as were Blocks F, G and H.

Having outlined the chronology of the building based principally on the map evidence, it should be acknowledged that Ordnance Survey maps are not invariably accurate and minor (occasionally major) alterations may not be included on some editions.

5. Commercial Directories

(Source: historicaldirectories.org website)

No reference has been found to Moulds & Moore in commercial directories predating 1920. Moore & Gent of Barwell, boot and shoe manufacturers, is recorded in Kelly's 1891 directory. Amos Moore, boot and shoe manufacturer, of Elim House is recorded in Kelly's 1895 edition. The factory of Amos Moore and Company, on the west side of King Street, is illustrated in the *Barwell and Earl Shilton Boot and Shoe Trail* (2000). The 1899 edition of Wright's directory lists John Moulds & Co of the Common, Barwell, whilst Kelly's edition of the same year gives the address of Moulds & Co boot manufacturers as 20 The Common, Barwell. The 1908 and 1916 editions of Kelly's directory list the address of Arthur Moulds, Honorary Secretary of the Boot and Shoe Manufacturers Association, as Shilton Road, Barwell.

Both Arthur Moulds and Amos Moore were involved in the boot and shoe trade in Barwell in the late 19th century, prior to the establishment of Moulds & Moore Ltd. It has not been possible within the remit of this survey to establish with certainty who built the factory at 30-44 Shilton Road. The address of Arthur Moulds is given as Shilton Road prior to the establishment of Moulds and Moore, which may point to this being one of his factories. Alternatively it may have been built for another manufacturer and only acquired by Moulds and Moore in 1920. Angela Hall's publication *Earl Shilton and Barwell As I Remember It* includes the recollections of workers employed at the factory (1998, 65-66).

6. Former Bakehouse

A former bakehouse in the rear garden of 12 Queen Street, adjoining the site, was demolished in the course of the development works. The Conservation Officer had requested that the survey should include consideration of this building. The exterior was photographed (Plate 5), but the structure was demolished before the interior was inspected or recorded.

7. Publication and Archive

A summary of the results of the project will be submitted to the editor of the *Transaction of the Leicestershire Archaeological and Historical Society* for inclusion in the next edition of that journal.

The project archive consists of:
70 monochrome negatives and contact prints
42 colour slides
Photographic index
Field notes
A copy of this report

The project archive will be deposited with Leicestershire County Council's Museums Service.

8. Bibliography and Sources

Hall, A., 1998. *Earl Shilton and Barwell As I Remember It*. Leicestershire Libraries and Information Service.

Hinckley and Bosworth Borough Council, 2000. *Barwell and Earl Shilton Boot and Shoe Trail*.

Johnson, T., 1996. *Bygone Barwell: A nostalgic look at the 1920s and 1930s*. Earl Shilton and District local History Group.

RCHME, 1996. *Recording Historic Buildings: A Descriptive Specification*. HMSO.

Shaw, F., 1987. *Barwell and Earl Shilton in Old Picture Postcards* (Vol. 1). European Library, Zalthommel, Netherlands.

Shaw, F., 1996. *Barwell and Earl Shilton in Old Picture Postcards* (Vol. 2). European Library, Zalthommel, Netherlands.

Website: <http://historicaldirectories.org>

Ordnance Survey map editions:

1886 1:2500 sheet XXXV.16 (first edition)
1903 1:2500 sheet XXXV.16 (second edition)
1929 1:2500 sheet XXXV.16
1931 1:10560 sheet XXXV.SE (revised 1927)
1964 1:2500 sheet SP4496 (revised August 1962)
1980 1:10000 SP94NW
1992 1:2500 sheet SP4496

Appendix: Catalogue of Photographs

1. Colour Slides

Frame	Floor	Block(s)	Description	Orientation – Looking:
1	External	A, D&E	Shilton Road (north) elevation	S
2	External	A, D&E	Shilton Road (north) elevation	S
3	External	A,B&H	Factory from Shilton Road from the NE	SW
4	External	A,B&H	Factory from Shilton Road from the NE	SW
5	External	A	Factory from Shilton Road from the NE	SW
6	External	A,B,D&H	Factory from Shilton Road from the SW	NE
7	External	B,C&H	Rear (south) elevation	N
8	External	B,C&H	Rear (south) elevation	N
9	External	B,F&G	Partly demolished Block F, with block G beyond	S
10	External	B	Detail of terracotta eaves course Block B	E
11	External	-	Former bakehouse to rear of 12 Queen Street	SE
12	First	A	Moulds & Moore stone plaque in Block D toilet	SE
13	First	A	Moulds & Moore stone plaque in Block D toilet	SE
14	Ground	B	Block B ground floor interior	SE
15	Ground	B	Block B ground floor interior	SE
16	Ground	B	Block B ground floor interior	SW
17	Ground	B	Block B ground floor interior	SW
18	Ground	B	Former window converted to door into Block C	E
19	Ground	B	Former window converted to door into Block C	E
20	Ground	C	Block C ground floor interior	N
21	Ground	C	Block C ground floor interior	N
22	Ground	C	Block C ground floor interior	SE
23	Ground	C	Block C ground floor interior	SE
24	Ground	E	Block E former reception/office	NE
25	Ground	E	Block E former reception/office	NE
26	First	A/D	Terracotta band 2 nd floor sill level W wall Block A	E
27	First	A/D	Terracotta band 2 nd floor sill level W wall Block A	E
28	First	A	First floor interior Block A	NW
29	First	A	First floor interior Block A	NW
30	First	A	First floor interior Block A	E
31	First	A	First floor interior Block A	E
32	First	B	First floor interior Block B	SW
33	First	C	First floor interior Block C looking at Block A	N
34	First	C	First floor interior Block C looking at Block A	N
35	Second	A	Second floor interior Block A	E
36	Second	A	Second floor interior Block A	E
37	Second	A	Queen-post roof structure Block A	SW
38	Second	A	Queen-post roof structure Block A	SW
39	Second	A	Blocked windows in south (rear) wall of Block A	S
40	Second	B&C	Second floor interior Block B open onto Block C	E
41	Second	B&C	Second floor interior Block B open onto Block C	E
42	Second	B	Queen-post roof structure Block B	NW

2. Monochrome negatives and contact prints

Film/ Frame	Floor	Block(s)	Description	Orientation – Looking:
1.1	-	-	-	-
1.2	External	B,C&H	Rear (south) elevation	N
1.3	External	B,C&H	Rear (south) elevation	N
1.4	External	B,C&H	Rear (south) elevation	N
1.5	External	B,C&H	Rear (south) elevation	N
1.6	External	B,C&H	Rear (south) elevation	N
1.7	External	A,B&H	Factory from Shilton Road from the NE	SW
1.8	External	A,B&H	Factory from Shilton Road from the NE	SW
1.9	External	A,B&H	Factory from Shilton Road from the NE	SW
1.10	External	A,B&H	Factory from Shilton Road from the NE	SW
1.11	External	A,B&H	Factory from Shilton Road from the NE	SW
1.12	External	A,B&H	Factory from Shilton Road from the NE	SW
1.13	External	A,B&H	Factory from Shilton Road from the NE	SW
1.14	External	A,B&H	Factory from Shilton Road from the NE	SW
1.15	External	A,B&H	Factory from Shilton Road from the NE	SW
1.16	External	A,B&H	Factory from Shilton Road from the NE	SW
1.17	External	A,B&H	Factory from Shilton Road from the NE	SW
1.18	External	A, D&E	Shilton Road (north) elevation	S
1.19	External	A, D&E	Shilton Road (north) elevation	S
1.20	External	A, D&E	Shilton Road (north) elevation	S
1.21	External	A,B,D&H	Factory from Shilton Road from the SW	NE
1.22	External	A,B,D&H	Factory from Shilton Road from the SW	NE
1.23	External	A,B,D&H	Factory from Shilton Road from the SW	NE
1.24	External	A,B,D&H	Factory from Shilton Road from the SW	NE
1.25	External	A,B,D&H	Factory from Shilton Road from the SW	NE
1.26	External	-	Former bakehouse to rear of 12 Queen Street	SE
1.27	External	-	Former bakehouse to rear of 12 Queen Street	SE
1.28	External	-	Former bakehouse to rear of 12 Queen Street	SE
1.29	External	B,F&G	Partly demolished Block F, with block G beyond	S
1.30	External	B,F&G	Partly demolished Block F, with block G beyond	S
1.31	External	B,F&G	Partly demolished Block F, with block G beyond	S
1.32	External	B,F&G	Partly demolished Block F, with block G beyond	S
1.33	External	B,F&G	Partly demolished Block F, with block G beyond	S
1.34	External	B	Detail of terracotta eaves course Block B	E
1.35	External	B	Detail of terracotta eaves course Block B	E
1.36	External	B	Detail of terracotta band at first floor sill level	SE

2. Monochrome negatives and contact prints continued

Film/ Frame	Floor	Block(s)	Description	Orientation – Looking:
2.1	-	-	-	-
2.2	Ground	B	Block B ground floor interior	SE
2.3	Ground	B	Block B ground floor interior	SE
2.4	Ground	B	Block B ground floor interior	SW
2.5	Ground	B	Block B ground floor interior	SW
2.6	Ground	C	Block C ground floor interior	N
2.7	Ground	C	Block C ground floor interior	N
2.8	Ground	C	Block C ground floor interior	SE
2.9	Ground	C	Block C ground floor interior	SE
2.10	Ground	B	Former window converted to door into Block C	E
2.11	Ground	B	Former window converted to door into Block C	E
2.12	Ground	E	Block E former reception/office	NE
2.13	Ground	E	Block E former reception/office	NE
2.14	Second	A	Second floor interior Block A	E
2.15	Second	A	Second floor interior Block A	E
2.16	Second	A	Blocked windows in south (rear) wall of Block A	S
2.17	Second	A	Blocked windows in south (rear) wall of Block A	S
2.18	Second	A	Queen-post roof structure Block A	SW
2.19	Second	A	Queen-post roof structure Block A	SW
2.20	Second	B&C	Second floor interior Block B open onto Block C	E
2.21	Second	B&C	Second floor interior Block B open onto Block C	E
2.22	Second	B	Queen-post roof structure Block B	NW
2.23	First	A/D	Terracotta band 2 nd floor sill level W wall Block A	E
2.24	First	A/D	Terracotta band 2 nd floor sill level W wall Block A	E
2.25	First	C	First floor interior Block C looking at Block A	N
2.26	First	A	First floor interior Block A	E
2.27	First	A	First floor interior Block A	E
2.28	First	A	First floor interior Block A	NW
2.29	First	A	First floor interior Block A	NW
2.30	First	B	First floor interior Block B	SW
2.31	First	A	Moulds & Moore stone plaque in Block D toilet	SE
2.32	First	A	Moulds & Moore stone plaque in Block D toilet	SE
2.33	First	A/D	Terracotta band 1st floor sill level W wall Block A	E
2.34	First	A/D	Terracotta band 1st floor sill level W wall Block A	E

end.

Addendum to ULAS report 2006-078: Photographic Survey at 30-44 Shilton Road, Barwell, Leicestershire LE9 8HA (National Grid Reference SP 445 968)

As part of the development the Shilton Road elevation of the street frontage range (Block A) was cleaned. It was then apparent that the top storey of this range (and also the extant roof structure) is of a later date than the lower storeys.

Observation made 7.10.2006.



Plate 1. 30-44 Shilton Road. Frontage range, principal (north) elevation (C1)



Plate 2. 30-44 Shilton Road. Frontage range, from the north-east (C5)



Plate 3. 30-44 Shilton Road. Frontage range, contemporary rear range and later additions at NW corner (C6)



Plate 4. 30-44 Shilton Road. Rear (south) elevation, from left to right gabled Block B, Block C and Block G (C7)



Plate 5. Former bakehouse to the rear of 12 Queen Street, Barwell, shortly before demolition (C11)

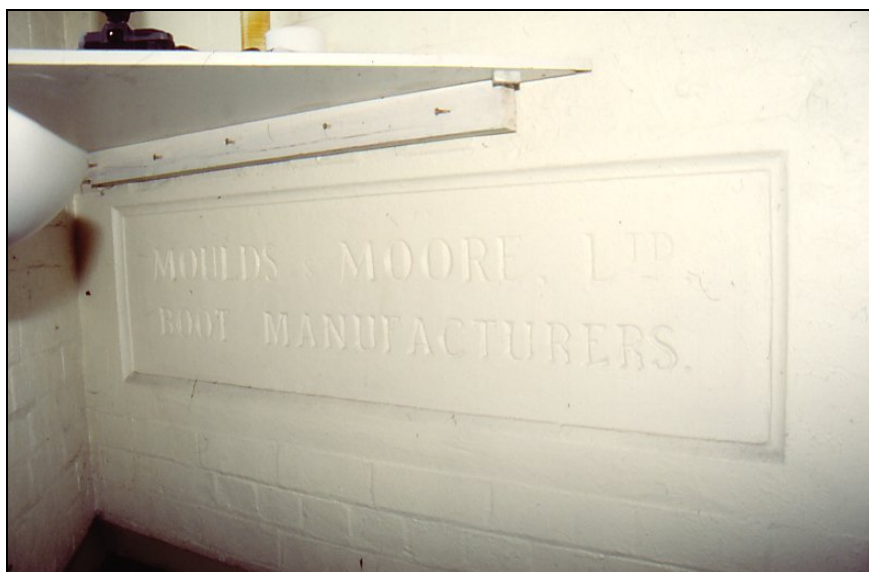


Plate 6. Moulds & Moore sign at NW corner of frontage range (Block A), now in first floor toilet Block D (C12)



Plate 7. Terracotta decoration to external W elevation of Block A, now within Block D staircase (C26)



Plate 8. Frontage range (Block A), first floor interior looking towards NW corner (C28)



Plate 9. Frontage range (Block A), first floor interior looking E, Shilton Road to left (C30)



Plate 10. Frontage range (Block A), second floor interior looking E, showing queen-post roof structure (C35)



Plate 11. Original second floor windows in S (rear) elevation of Block A, now overlooking Block C (C39)

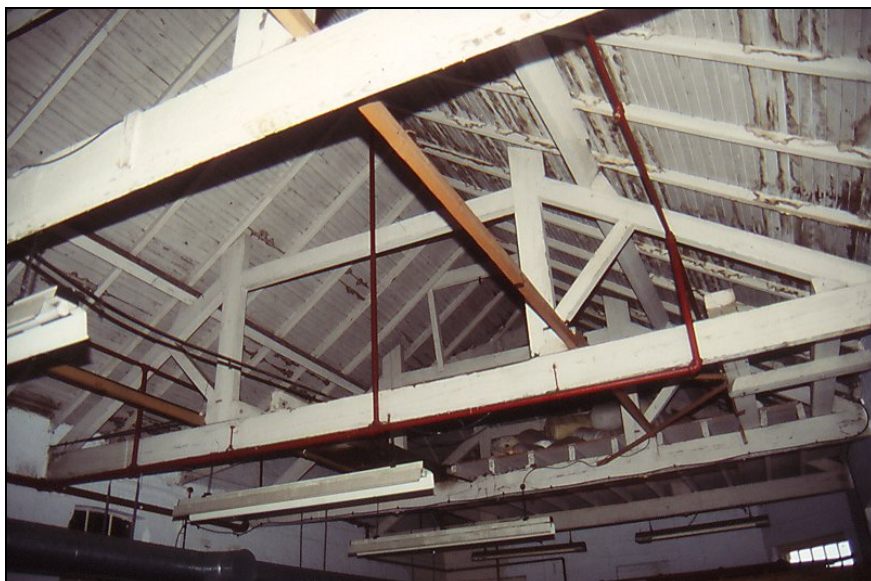


Plate 12. Frontage range (Block A), queen-post roof structure (C37)



Plate 13. Ground floor interior of Block B, looking S (C14)



Plate 14. Ground floor interior Block B, former window in E wall converted to door into Block C beyond (C18)



Plate 15. First floor interior of Block B looking SW, occupied by H.W. Slimm & Sons at time of survey (C32)



Plate 16. Second floor interior, Block B open onto Block C, looking east (C41)



Plate 17. Second floor interior of Block B showing queen-post roof structure (C42)



Plate 18. Ground floor interior of Block C, looking N to infilled windows in rear elevation of Block A (C20)



Plate 19. Ground floor interior of Block C, looking towards lift shaft in SE corner (C22)



Plate 20. First floor interior of Block C, looking N towards rear elevation of Block A (C33)



Plate 21. Single storey Block E, interior of former reception/office, looking E (C24)



Figure 1. Location Plan. Based on 1992 Ordnance Survey 1:2500. Site Highlighted. Reproduced with the permission of the Controller of HMSO ©Crown Copyright. Licence number AL10002186.

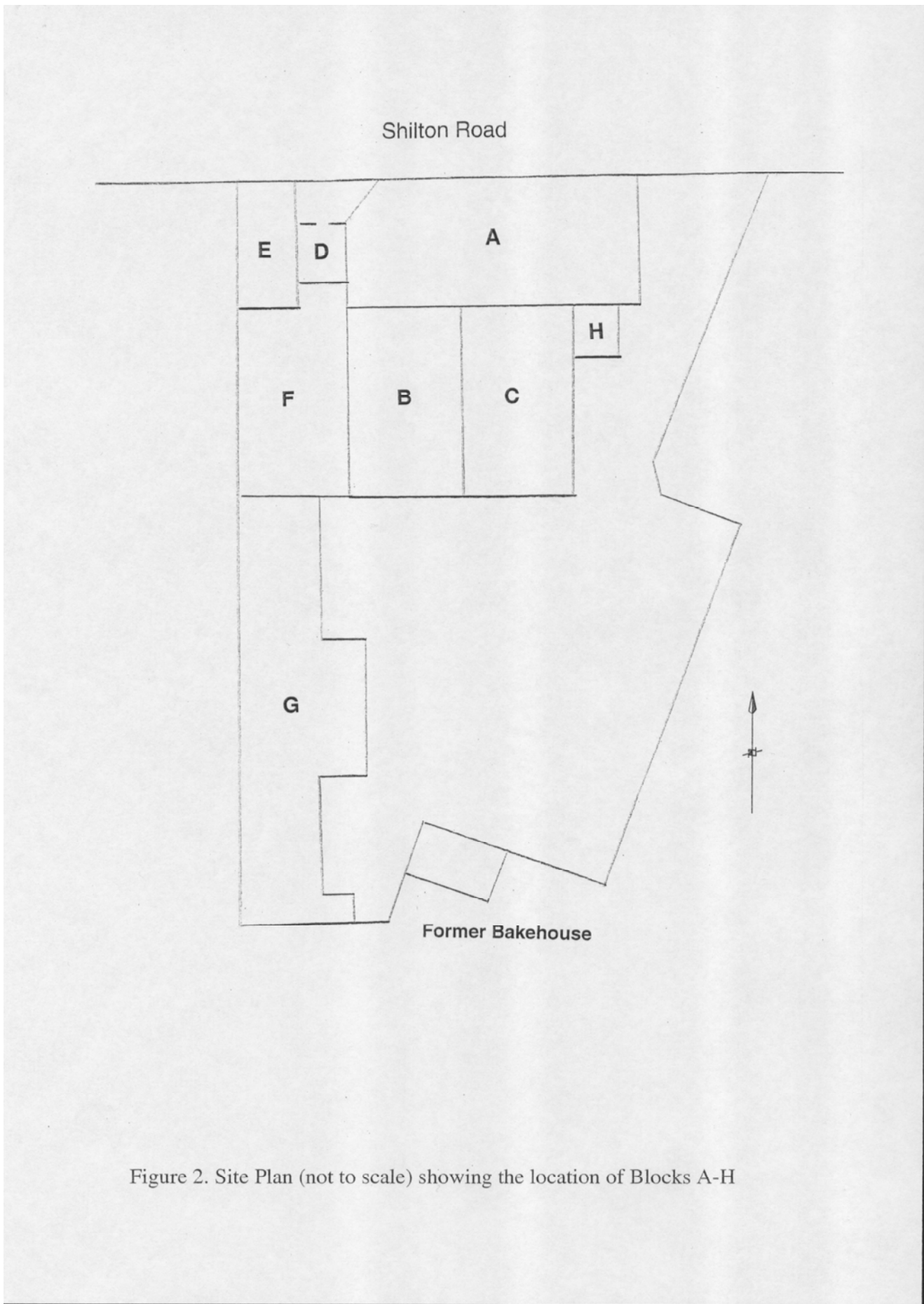


Figure 2. Site Plan (not to scale) showing the location of Blocks A-H

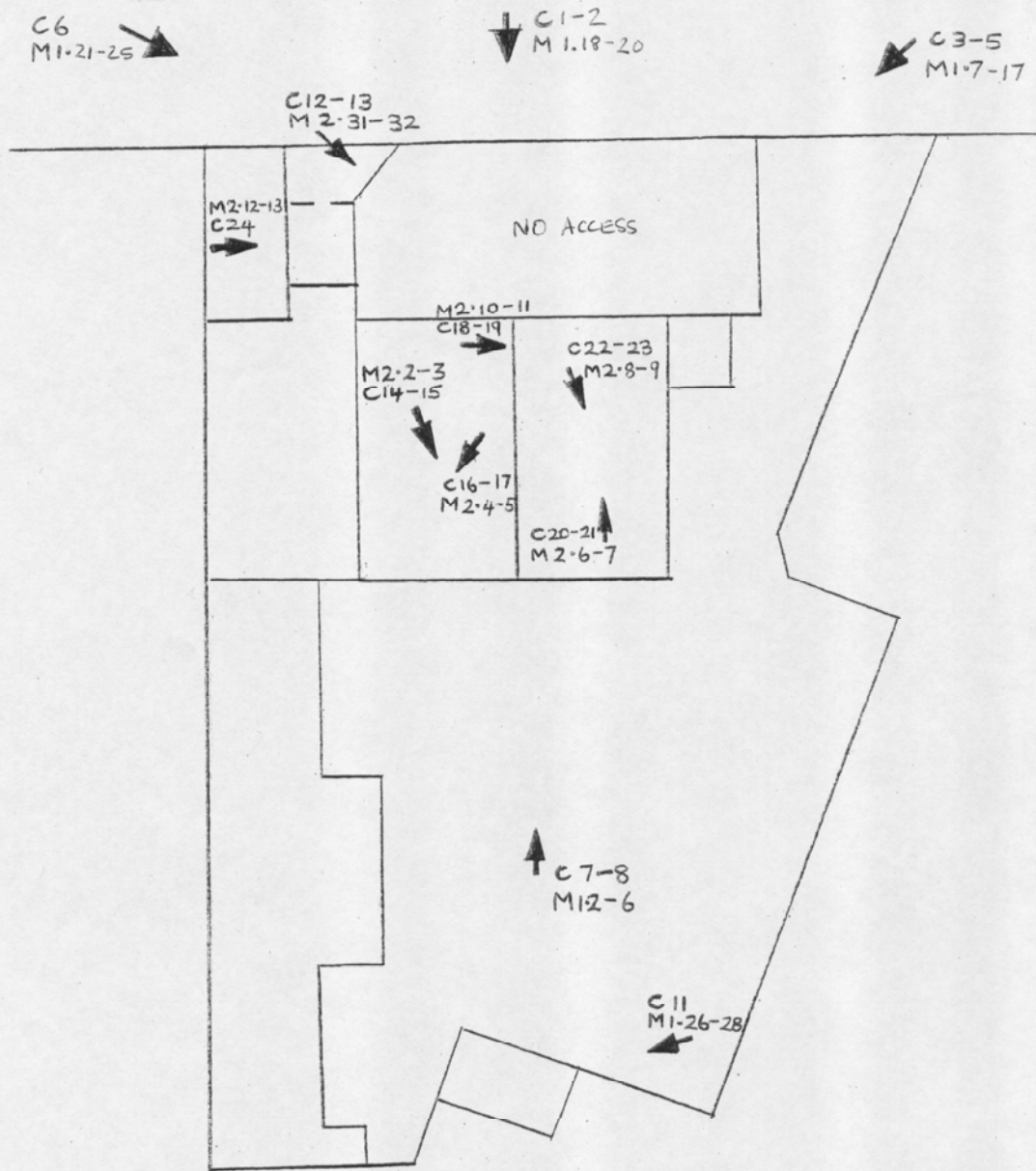


Figure 3. Photo locations/orientation. Ground Floor. Not to Scale.

C = Colour slide followed by frame number.

M = Monochrome followed by film and frame number eg. 1.23 is Film 1, Frame 23

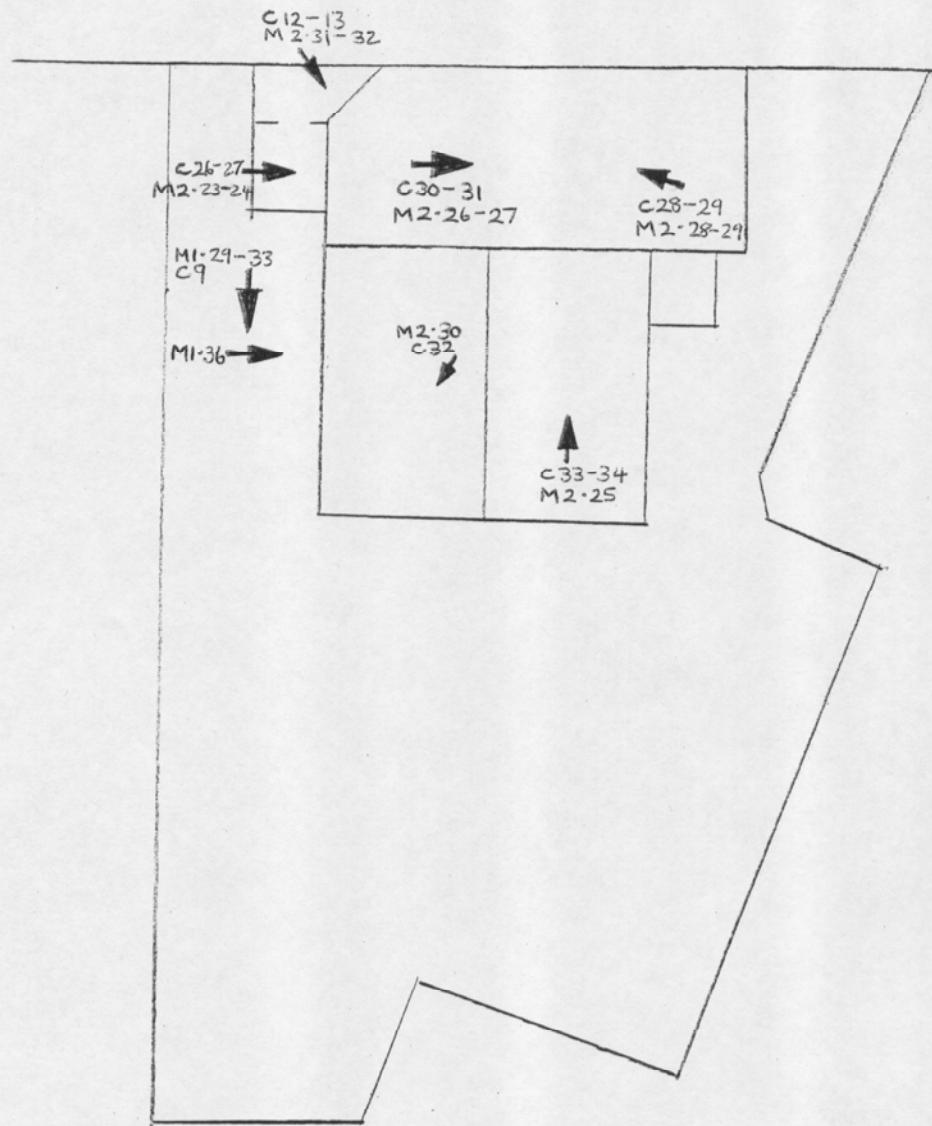


Figure 4. Photo locations/orientation. First Floor. Not to Scale.

C = Colour slide followed by frame number.

M = Monochrome followed by film and frame number eg. 1.23 is Film 1, Frame 23

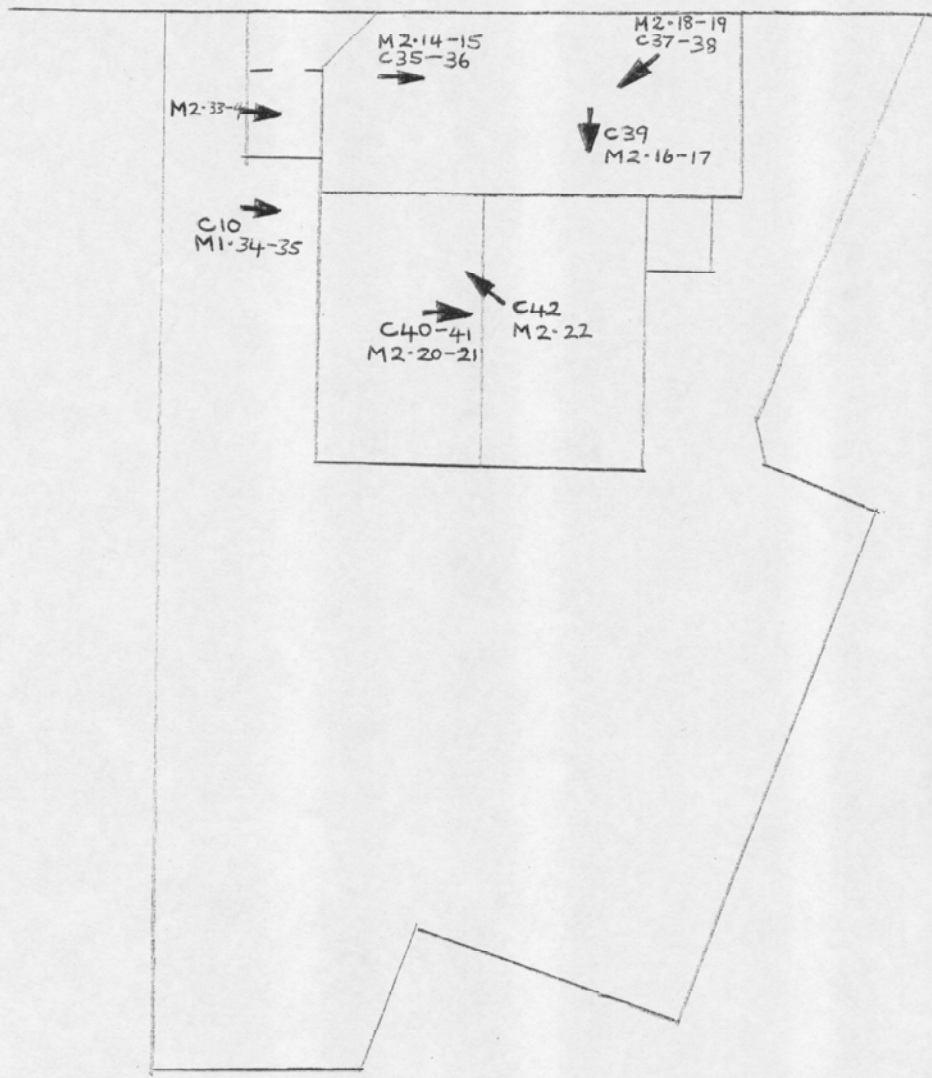


Figure 5. Photo locations/orientation. Second Floor. Not to Scale.

C = Colour slide followed by frame number.

M = Monochrome followed by film and frame number eg. 1.23 is Film 1, Frame 23