

Client




HEADLAND
ARCHAEOLOGY (UK) Ltd

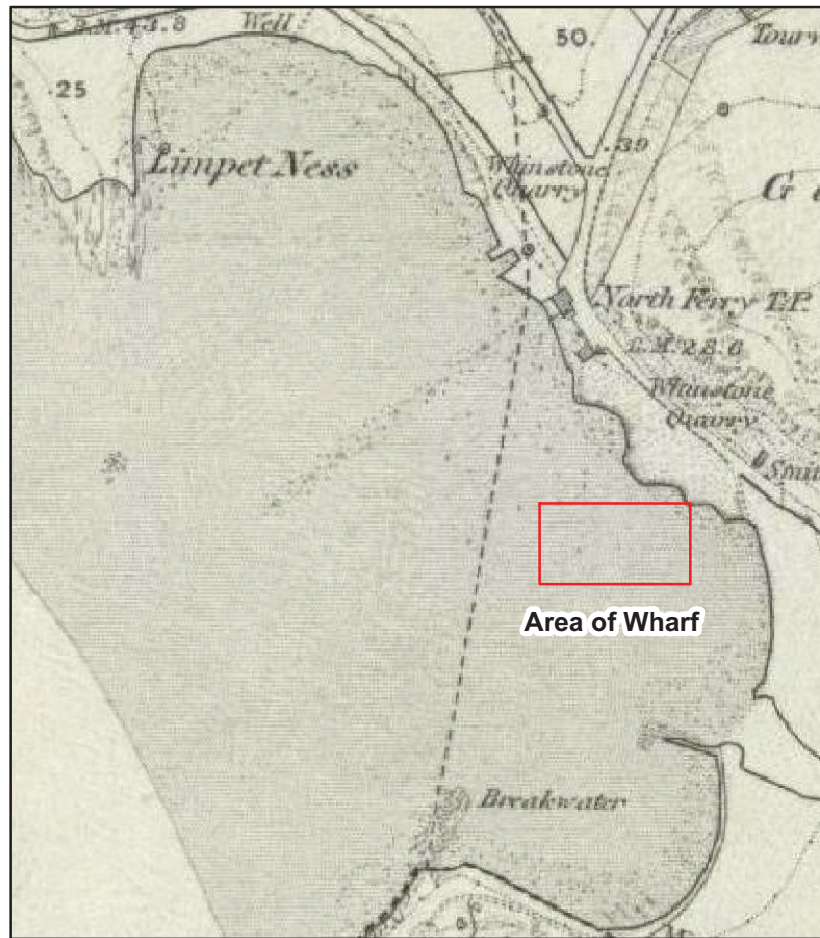
FORTH REPLACEMENT CROSSING, LAND PARCEL 3 (FRCE10)
 Reproduced using 2005 OS 1:50,000 Landranger No. 65 and digital 1:10,000 data supplied by Transport Scotland. Ordnance Survey © Crown copyright 2010 All rights reserved.
 Licence No. AL 100013329

Scale 1:55,000 @ A4

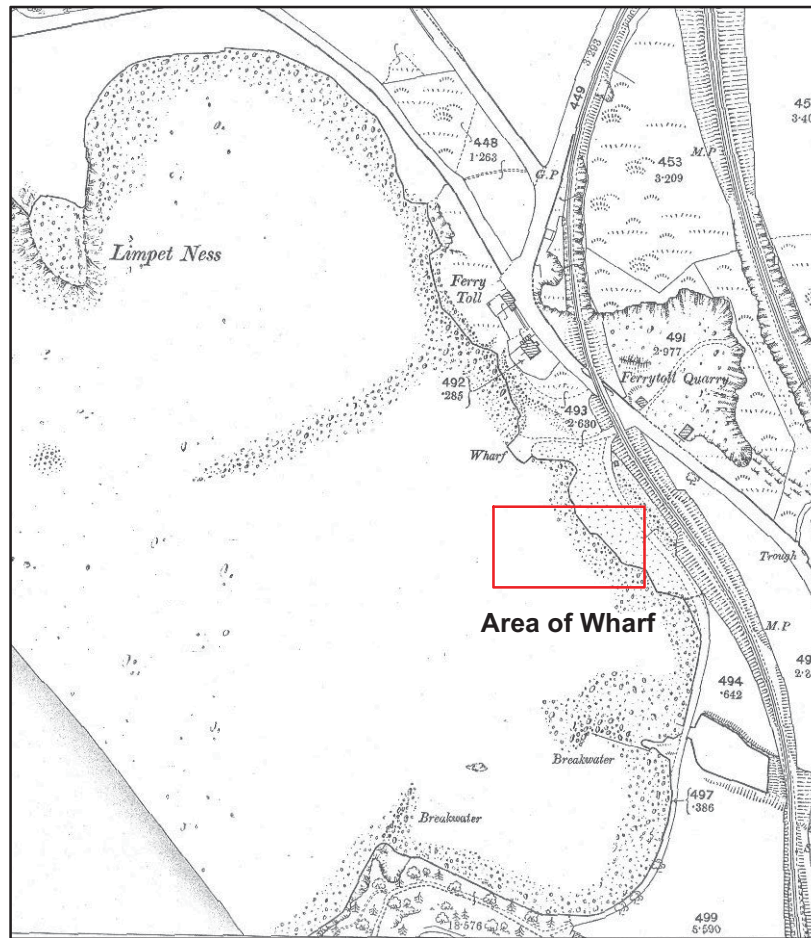


0 3km

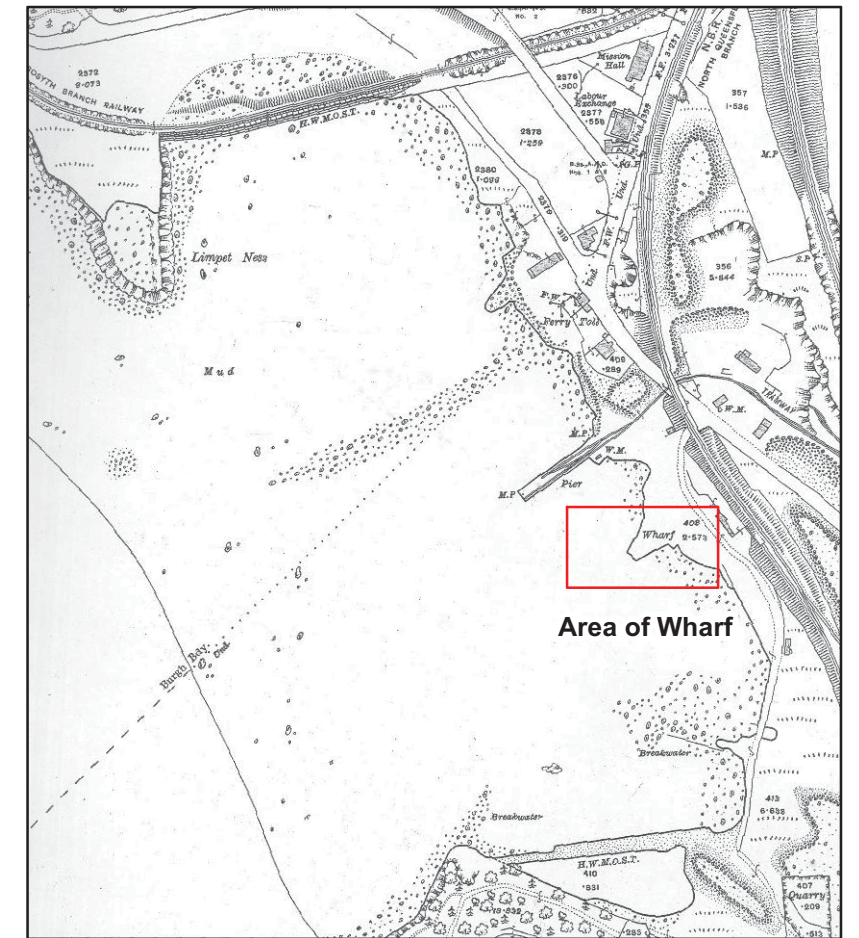
Illus 1
Site location



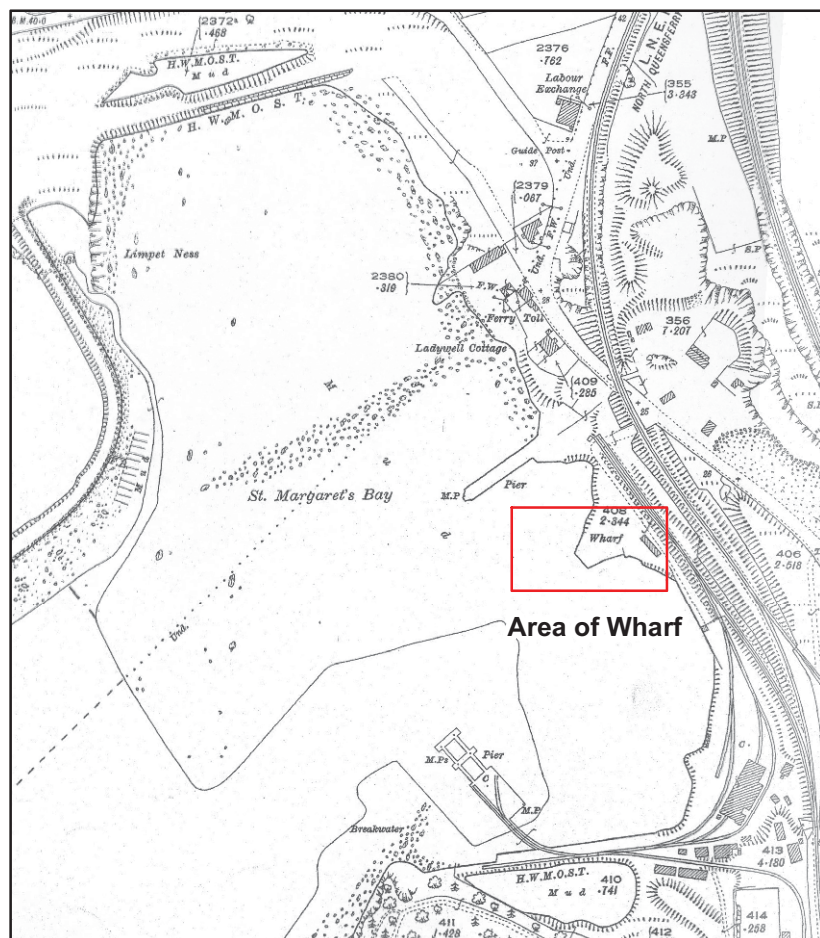
Ordnance Survey Map Published 1856



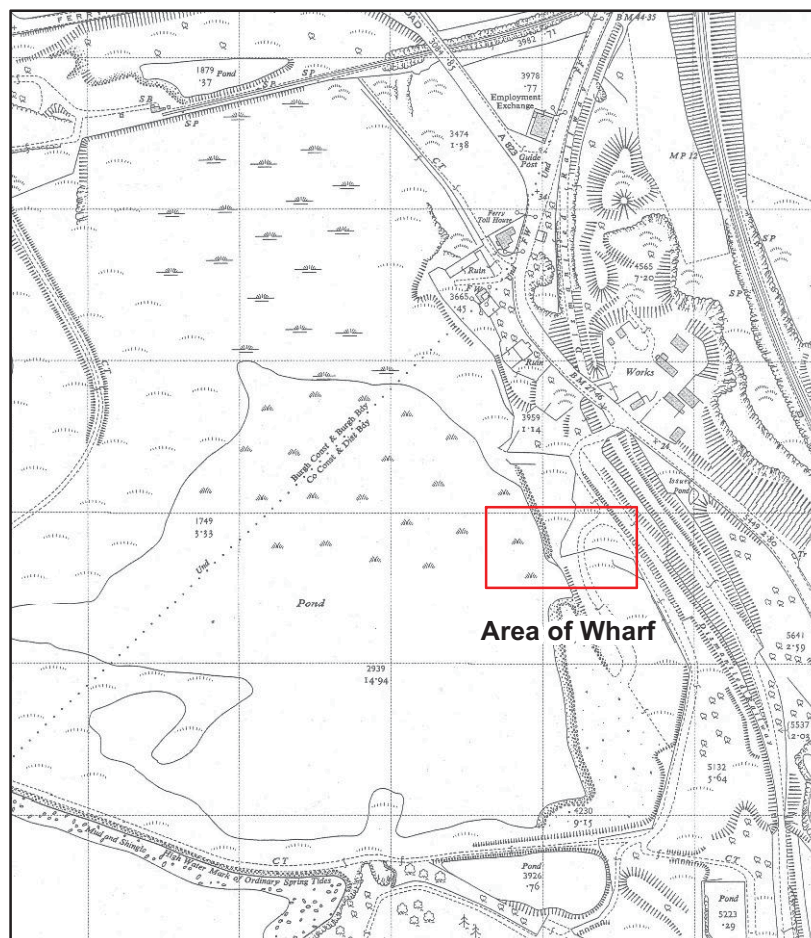
Ordnance Survey Map Published 1896



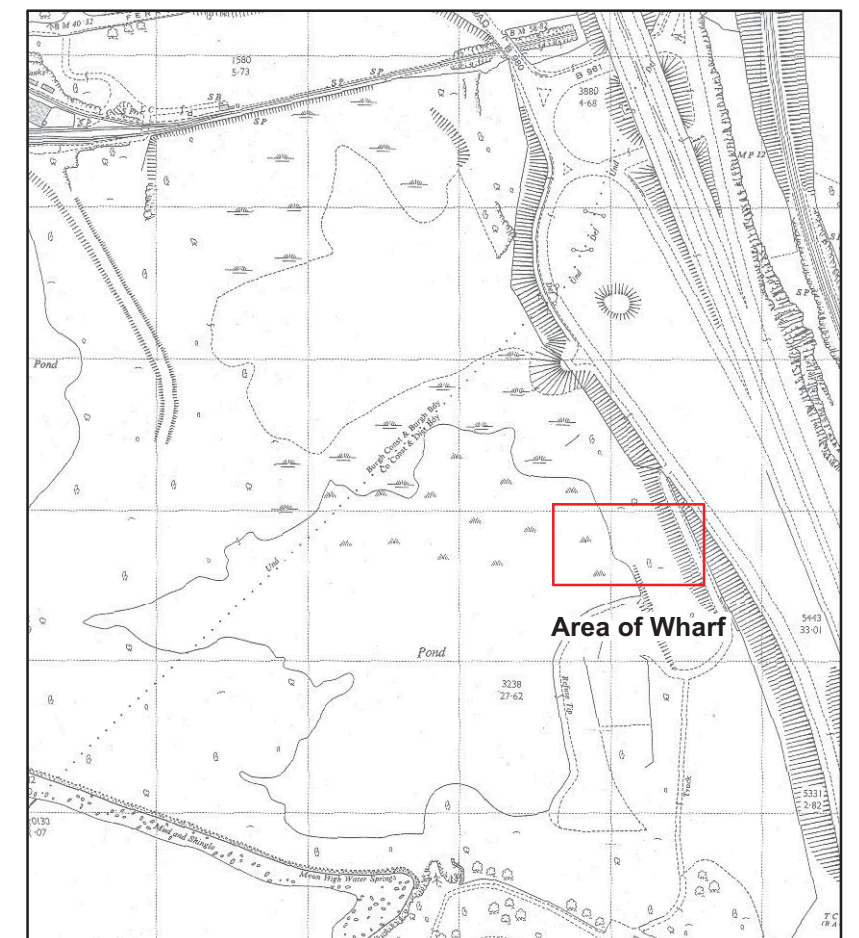
Ordnance Survey Map Published 1915



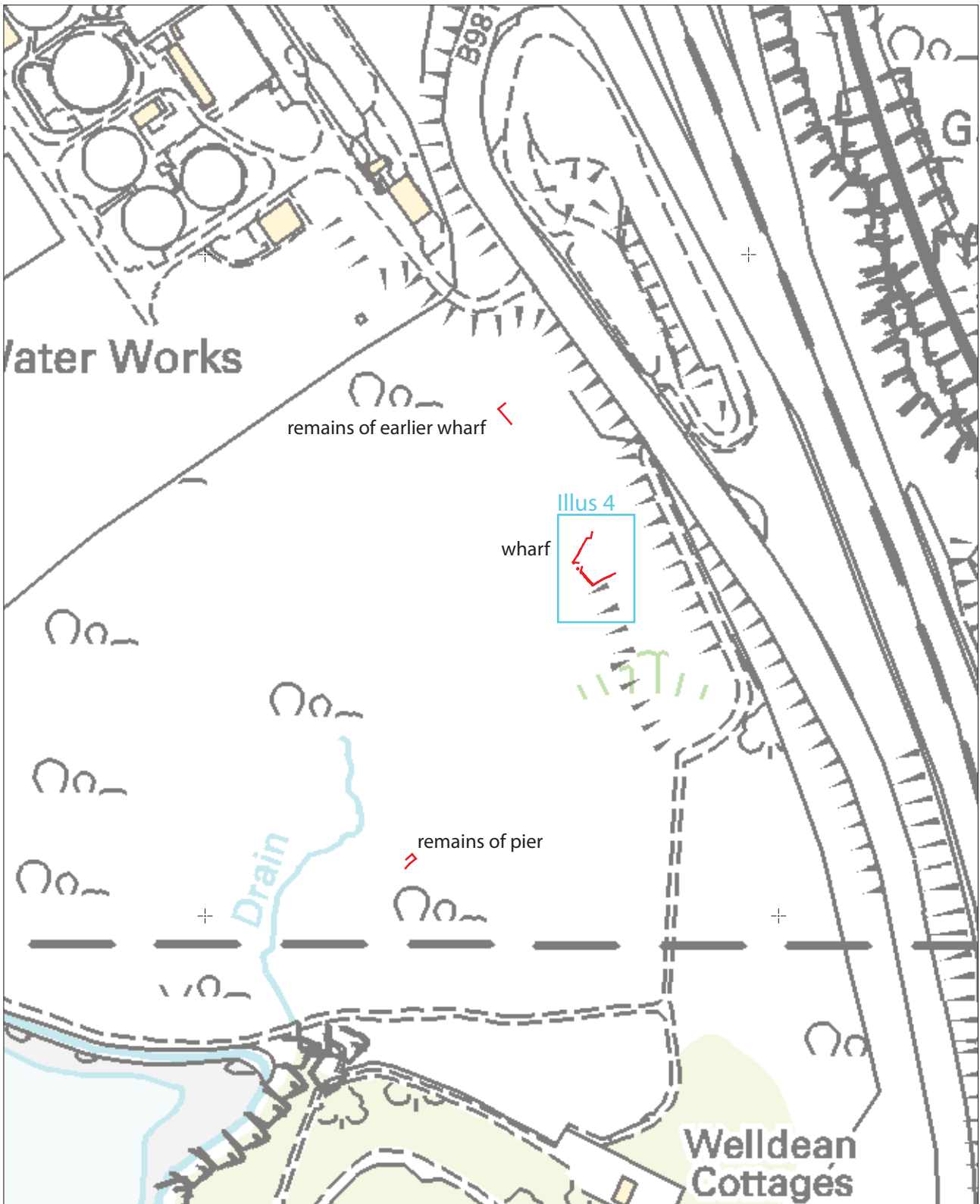
Ordnance Survey Map Published 1927



Ordnance Survey Map Published 1961



Ordnance Survey Map Published 1967



© Headland Archaeology (UK) Ltd



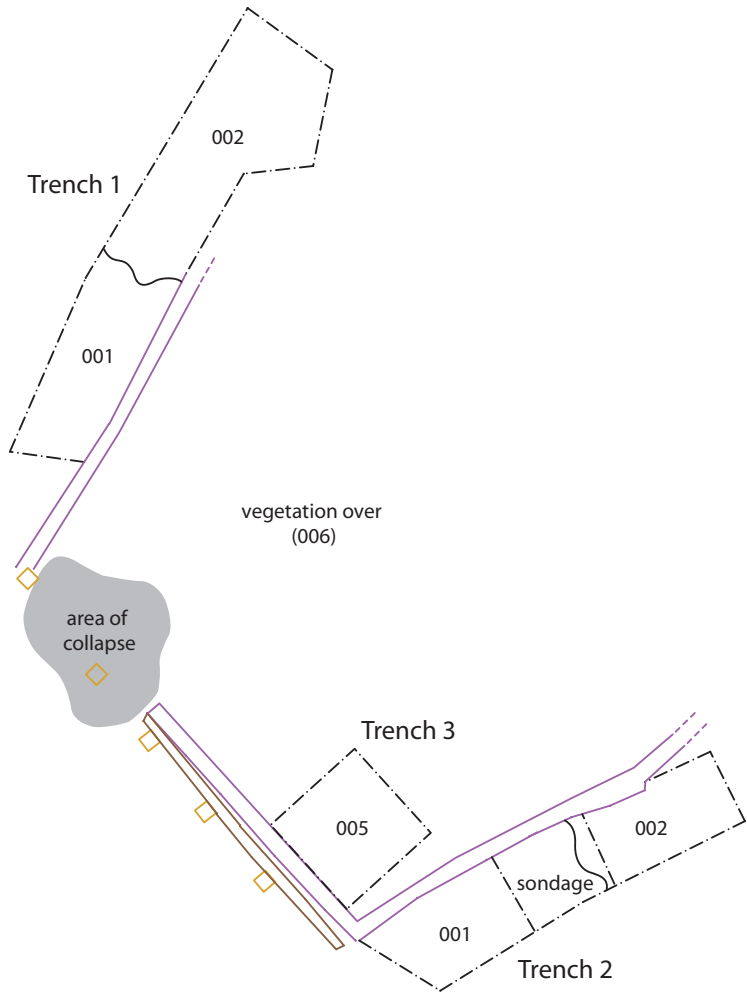
HEADLAND
ARCHAEOLOGY (UK) Ltd

FORTH REPLACEMENT CROSSING, LAND PARCEL 3 (FRCE 10)

Reproduced using OS 1:10,000 data supplied by Transport Scotland. Ordnance Survey © Crown copyright 2010 All rights reserved. Licence No. AL 100013329



Illus 3
Wharf location



FORTH REPLACEMENT CROSSING, LAND PARCEL 3 (FRCE 10)
© Headland Archaeology (UK) Ltd 2010

Key

- uprights of branding
- lintel of branding
- wharf
- limit of excavation

0 5m
1:200 @ A4

Illus 4
Detail of wharf structure



Illus 5

Wharf from west, prior to clearing of vegetation



Illus 6

Trench 1 from north



Illus 7

SE elevation of wharf showing 'loose' nature of construction



Illus 8

Lintel of branding



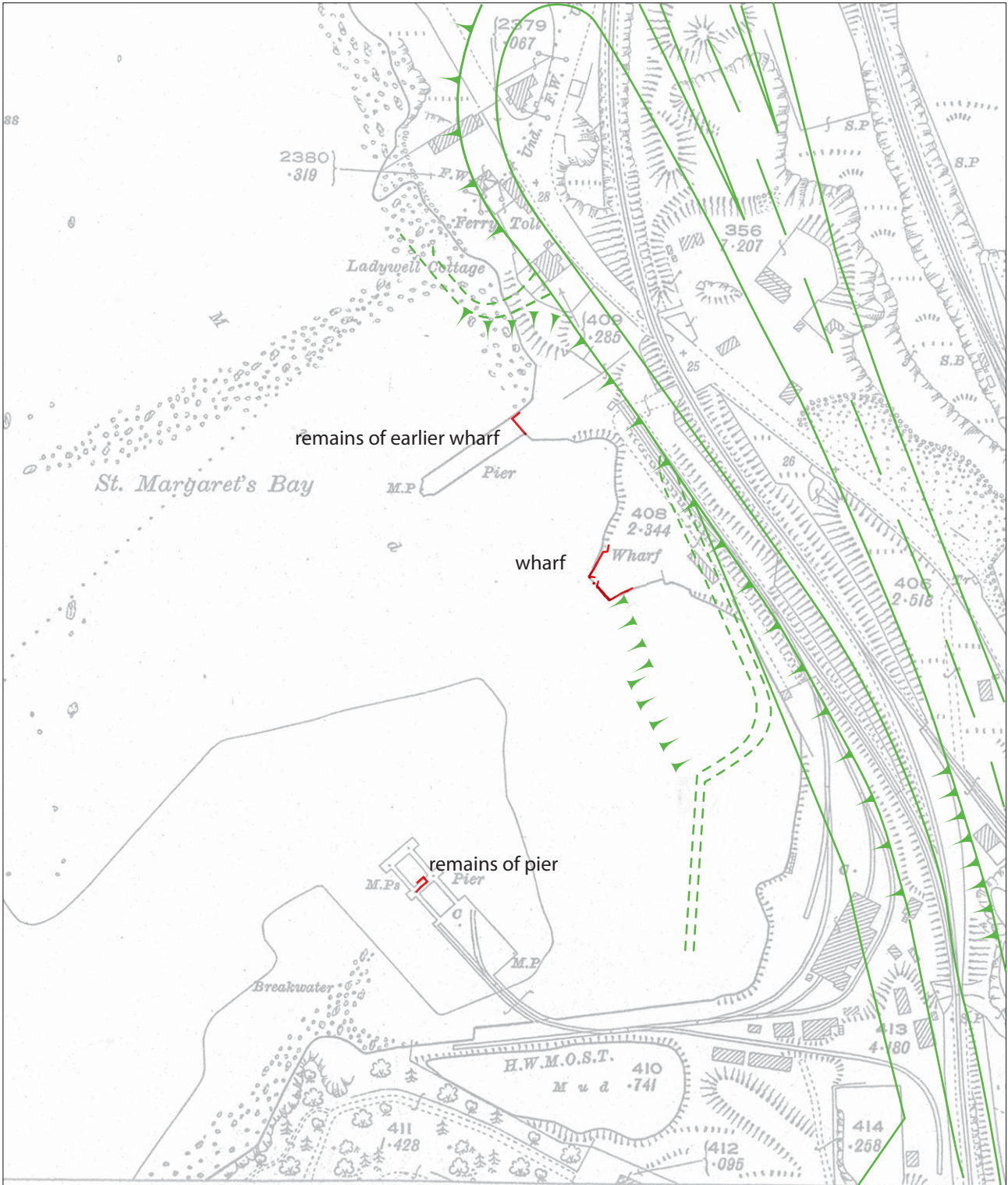
HEADLAND
ARCHAEOLOGY (UK) Ltd



Illus 9
Branding across front of wharf



Illus 10
Concrete remains of pier




© Headland Archaeology (UK) Ltd





HEADLAND
 ARCHAEOLOGY (UK) Ltd

FORTH REPLACEMENT CROSSING, LAND PARCEL 3 (FRCE 10)

Reproduced using OS 1:10000 data supplied by Transport Scotland. Ordnance Survey © Crown copyright 2010 All rights reserved. Licence No. AL 100013329

 overlay of features from modern map

 N

 0 100m

1:2500 @ A4

Illus 11
Wharf location overlaid on 1927 OS Map