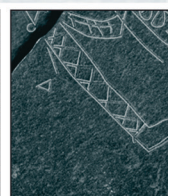
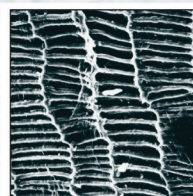
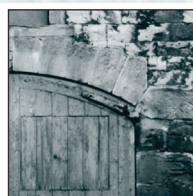
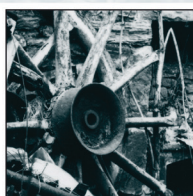
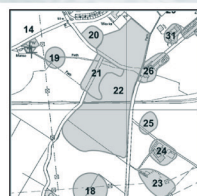


NCLL11/001



NEW CEMETERY, LANARK, LANARKSHIRE

*Data Structure Report of an Archaeological
Evaluation and Excavation*

for South Lanarkshire Council

CL/10/0379

September 2011



HEADLAND
ARCHAEOLOGY (UK) Ltd



NEW CEMETERY, LANARK, LANARKSHIRE

Data Structure Report of an Archaeological Evaluation and Excavation

for South Lanarkshire Council

CL/10/0379

September 2011

HA Job no.: NCLL11/001

NGR: NS 91425 42725

Parish: Lanark

Council: South Lanarkshire

OASIS ref.: headland1-108900

Project Manager

Mark Roberts

Author

Ross Murray

Fieldwork

Anna Sztromwasser, Calum Henderson,
David McNicol, Emma Searle, Fraser McFarlane,
Richard Tuffin, Ross Murray & Thomas Small

Graphics

Anna Sztromwasser

Approved by

Mark Roberts, Project Manager

.....



Headland Archaeology (UK) Ltd
© **Headland Archaeology (UK) Ltd 2011**

10 Payne Street, Glasgow G4 0LF
T 0141 354 8100 • F 0141 332 9388 • E glasgowoffice@headlandarchaeology.com
www.headlandarchaeology.com

CONTENTS

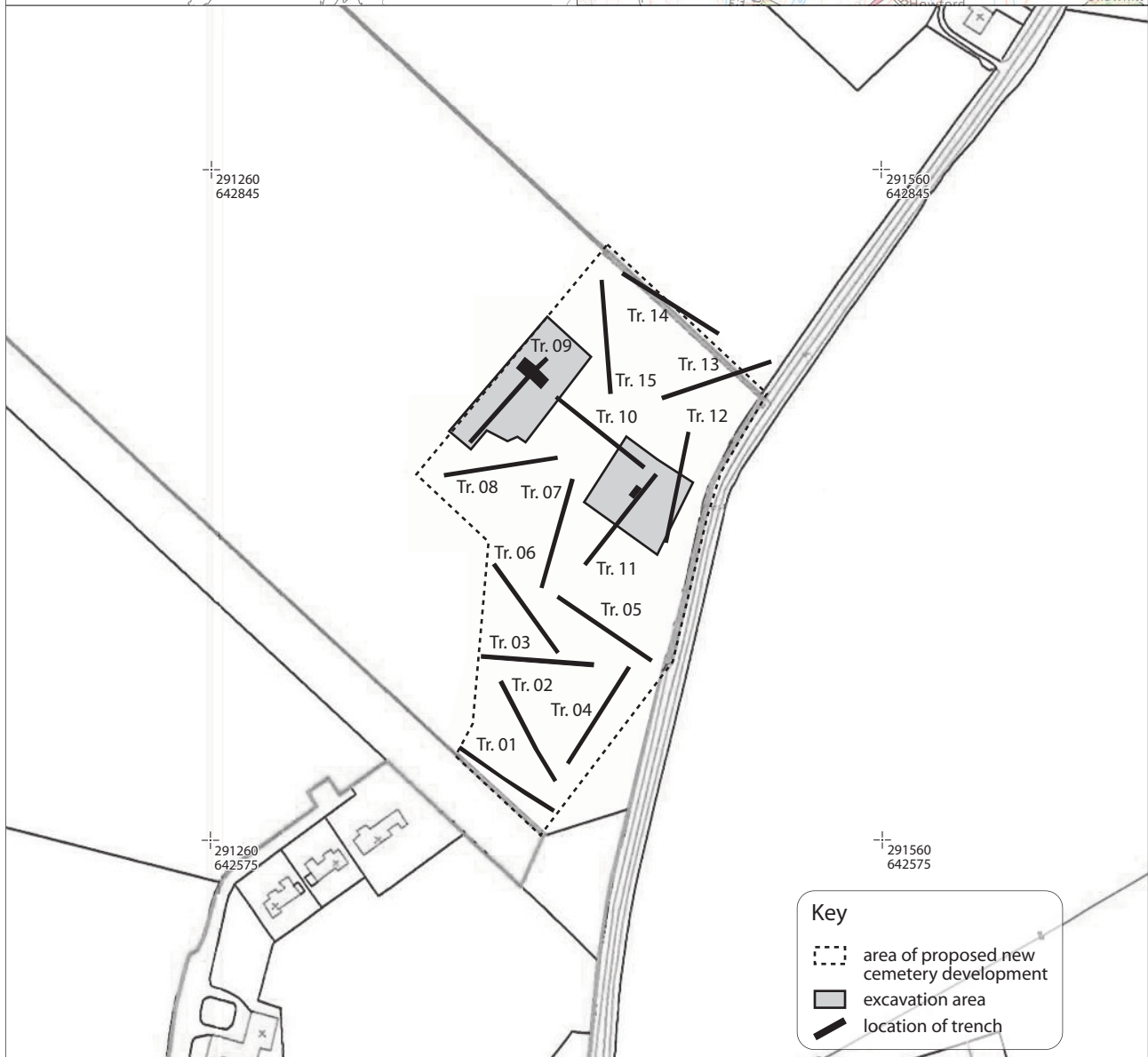
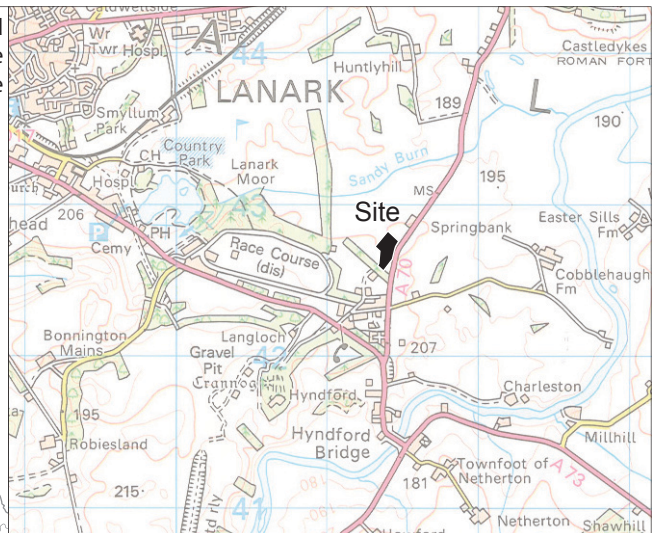
1.	INTRODUCTION	1
2.	SITE LOCATION & DESCRIPTION	1
3.	ARCHAEOLOGICAL BACKGROUND	1
4.	OBJECTIVES	2
5.	METHODOLOGY	2
	5.1 Evaluation	2
	5.2 Excavation	2
6.	RESULTS	2
	6.1 Evaluation	2
	6.2 Excavation	2
7.	DISCUSSION	4
8.	APPENDICES	6
	8.1 Appendix 1 – Site registers	6
	<i>Trench register</i>	6
	<i>Evaluation context register</i>	7
	<i>Excavation context register</i>	9
	<i>Photo register</i>	11
	<i>Drawing register</i>	13
	<i>Sample register</i>	13

LIST OF ILLUSTRATIONS

<i>Illus 1</i>	<i>Site location</i>	viii
<i>Illus 2</i>	<i>Plan of excavation areas</i>	3
<i>Illus 3</i>	<i>Section through ditch [1110]</i>	4
<i>Illus 4</i>	<i>View of ditch [1110] looking E</i>	4
<i>Illus 5</i>	<i>View of rig divider looking N</i>	5
<i>Illus 6</i>	<i>Pre-ex view of features related to badger sett</i>	5
<i>Illus 7</i>	<i>View of features related to badger sett, looking SE</i>	5
<i>Illus 8</i>	<i>View of features related to badger sett, looking NW</i>	5
<i>Illus 9</i>	<i>View of features related to badger sett after excavation showing tunnelling, looking W</i>	5



North of Glenmuir Water Road
Hyndford Bridge
South Lanarkshire



Reproduced using 2005 OS 1:50,000 Landranger 71 and digital 1:2,500 data supplied by South Lanarkshire Council. Ordnance Survey © Crown copyright 2011. All rights reserved. Licence No. AL 100013329.

Scale 1:3,000 @ A4



0 150m

Illus 1
Site location

NEW CEMETERY, LANARK, LANARKSHIRE

Data Structure Report of an Archaeological Evaluation and Excavation

An archaeological evaluation and excavation was carried out in response to an application for planning consent on the site of a proposed new cemetery on an area of ground to the north of the former Winston Barracks, Hyndford Road, Lanark. Two areas (A and B) were excavated following the results of the evaluation and revealed a boundary ditch and several narrower linear features that related to 19th century agricultural activity in Area A. The features identified in Area B during the evaluation were found to be the result of badger activity and of no archaeological significance.

1. INTRODUCTION

Headland Archaeology (UK) Ltd was commissioned by South Lanarkshire Council to carry out an archaeological evaluation and excavation on the site of a proposed new cemetery on an area of ground to the north of the former Winston Barracks, Hyndford Road, Lanark. The work was carried in response to an application for planning consent and adhered to a Written Scheme of Investigation prepared by Headland Archaeology and agreed by WoSAS (West of Scotland Archaeology Service) and approved by South Lanarkshire Council in advance of work beginning on site.

2. SITE LOCATION & DESCRIPTION

The site was located to the east of Lanark just to the north of the former Winston Barracks (NGR 291425 642725) in an area of set-aside agricultural land (Illus 1). The site was bounded to the east by the A70 and the south by a belt of mature trees. The underlying drift geology consisted of sand and fine gravel.

3. ARCHAEOLOGICAL BACKGROUND

The proposed new cemetery was located in an area of some archaeological sensitivity, one which is considered to have a reasonable potential to produce buried deposits due to the dense concentration of recorded prehistoric sites that are present in the immediate vicinity.

An archaeological evaluation was undertaken on 30 alternative routes for a proposed road linking the M8 near Whitburn with the M6/M74 near Douglas by AOC

in 1995. A linear cropmark (WoSASPIN 40938) and a possible field system (WoSASPIN 40940) were recorded within the site of the proposed cemetery, although their precise locations are unknown.

An archaeological evaluation was carried out in 2000 by GUARD at the Winston Barracks, to the south of the proposed cemetery. No archaeological remains were uncovered during this evaluation, although this may have been due to prior disturbance on the site.

The remains of a barrow (WoSASPIN 10781), consisting of a central pit enclosed within a circular ditch, can be seen as crop-markings on air photographs, on a slight rise on the edge of Lanark Race Course around 350m south of the proposed site.

Approximately 1km to the south of the proposed site, the remains of a crannog site, a Scheduled Monument of national significance, are located (WoSASPIN 10770). Formerly an artificial islet near the margin of a small loch, it now appears as a low, roughly circular mound measuring about 23m across and surrounded by a dry, ditch-like hollow, 0.8m deep, with a variable width of between 4m on the north to 12m on the southwest side.

Aerial photographs have revealed cropmarks representing a possible enclosure (WoSASPIN 14685), and part of a possible settlement (WoSASPIN 10776), 245m and 290m east of the proposed cemetery respectively. Nothing is visible of the possible settlement on the surface of the ground, but the earthwork seems to be formed by two closely-separated ditches.

Another enclosure (WoSASPIN 19083) identified by aerial photography is located on Lanark Moor, approximately 440m north of the proposed site. Also on



Lanark Moor, two Beakers (WoSASPIN 10799), which may have accompanied burials, were found in a sand-pit, and donated to the National Museum of Antiquities of Scotland (NMAS) in 1864. The precise location of these Beakers was not recorded, but it does suggest the potential for other prehistoric burials to be present in the vicinity.

4. OBJECTIVES

The main objectives of the archaeological works were:

- to identify, excavate and record any archaeological remains revealed during any further ground disturbance,
- to report on the results of the work.

5. METHODOLOGY

5.1 Evaluation

An 8% sample of the development area – representing 750 linear metres of trench 2m wide was examined. This was excavated as fifteen 50m long trenches (Illus 1).

2

A 360° tracked mechanical excavator be fitted with a toothless ditching bucket was used for the stripping of all topsoil with all trenches excavated under direct archaeological supervision. Machine excavation terminated at the top of the natural geology or the first significant archaeological horizon, whichever was encountered first. Any further excavation required to satisfy the objectives of the evaluation continued by hand. On completion of machine excavation, all faces of the trench that require examination or recording were cleaned using appropriate hand tools.

All identified features were investigated by sample excavation and recorded. This involved excavation of 50% of discrete features and at least a 1m wide section of linear features. No features were wholly excavated.

All trenches were scanned with a CAT pipe/cable locator before any excavation commenced and were tied into the National Grid and to Ordnance Datum using differential GPS. On completion of the evaluation, all trenches were backfilled.

5.2 Excavation

Two areas were opened in order to target the archaeological features identified during the evaluation. The first area (Area A) measured 1600m² and was centred on features

recorded in Trench 11. The second area (Area B) measured 1400m² and was centred on features recorded in Trench 09.

All topsoil stripping was undertaken with a 360° tracked mechanical excavator under the same conditions as in the evaluation (described above).

All identified features were investigated and recorded. Archaeological features exposed were sample excavated. This typically involved excavation of 50% of discrete features and a minimum 10% of linear features.

6. RESULTS

6.1 Evaluation

In total fifteen trenches were excavated across the development area, with a combined length of 750m, extensions were made to Trenches 09 and 11. Full descriptions of trenches and deposits are listed in the appendices, the results are summarized below.

Trenches 01–04 were located in the southern half of the development area and contained several shallow, northwest to southeast oriented ditches that are likely to have related to relatively modern agricultural activity.

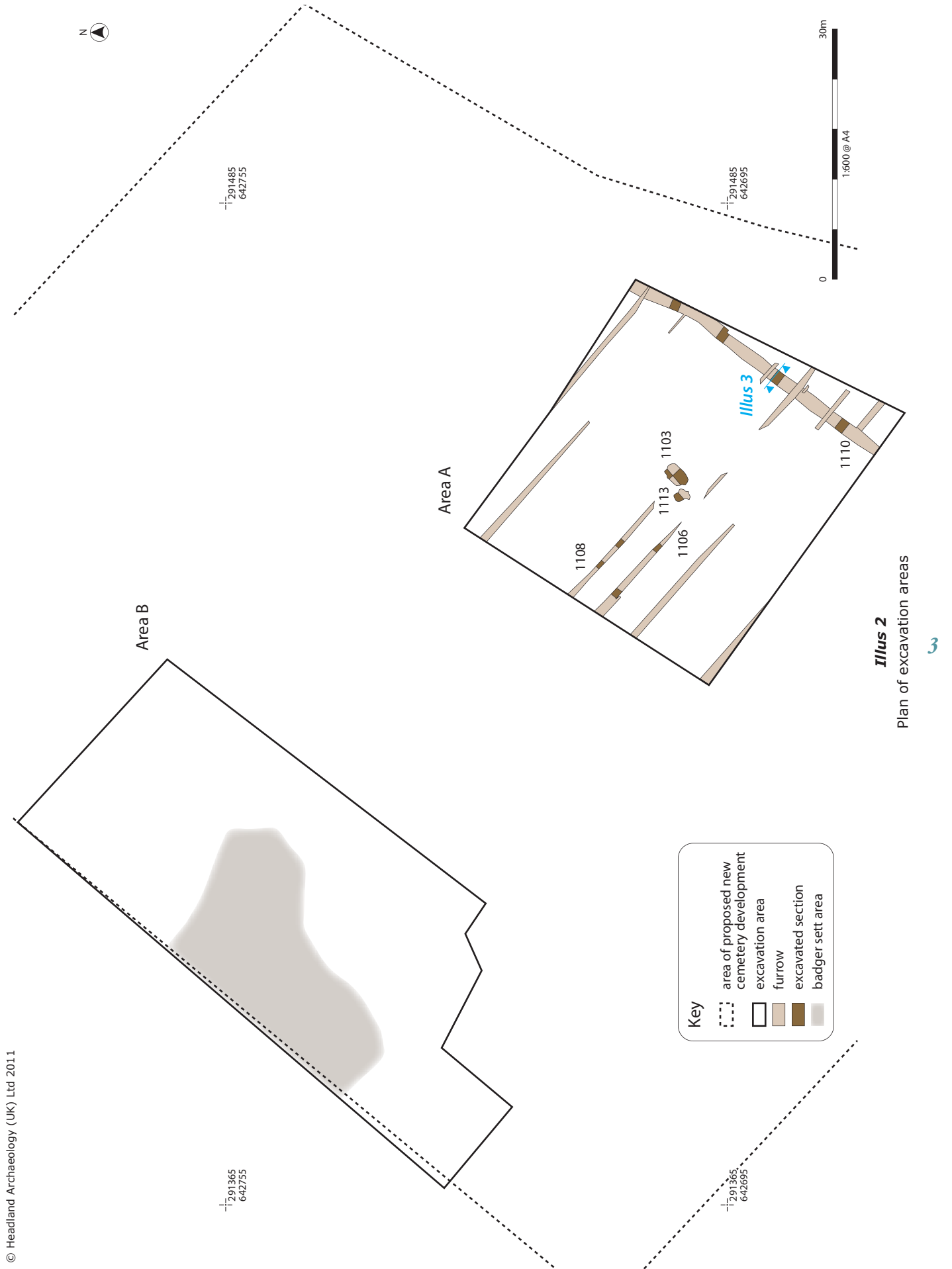
Trenches 09, 11 and 12 contained features that were sample excavated during the evaluation and were explored more fully during the excavation phase and are described below.

The remaining trenches contained no archaeological features.

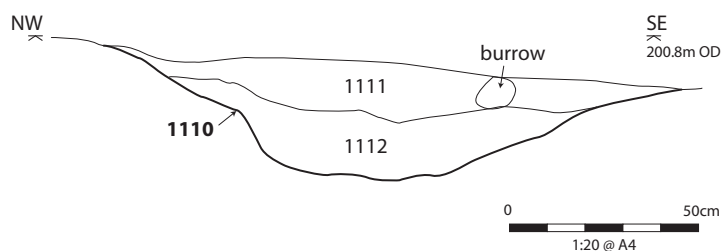
6.2 Excavation

Two areas were opened in order to target the archaeological features identified during the evaluation. The first area (Area A) measured 1600m² and was centred on features recorded in Trenches 11 (a shallow pit) and 12 (a northeast to south-west oriented ditch). The second area (Area B) measured 1400m² and was centred on features recorded in Trench 09 (Illus 2).

Area A contained several additional linear features as well as the ditch and pit identified in the evaluation (Illus 5). The ditch was present along the eastern limit of Area A, was between 1.3 and 1.6m wide and had maximum depth of 0.25m. The sides were shallow sloping and the base was broad and slightly concave. The upper fill was a mottled mixture of dark brown, light brown, orange and grey brown sand. Fragments of window glass, a ceramic marble and modern (late 19th century) whiteware and brownware pottery were



Illus 2
Plan of excavation areas



Illus 3

Section through ditch [1110]

recovered from this deposit. The lower deposit was less mottled fine silty sand (Illus 3).

The upper fill of the ditch had been truncated by a number of linear features that ran parallel to each other and perpendicular to the ditch. These were oriented north-west to south-east and occurred at interval of between 3m to 4.2m. They were up to 0.6m wide and 0.25m deep (Illus 5). They petered out where they crossed the slightly higher part in the centre of Area A.

The pit recorded in the evaluation was in fact two shallow amorphous features. The largest measure 3m by 1.8m and was filled with a dark brown coarse silty sand. The smaller measured 1.9m by 1.6m. Both were 0.15m deep. No artefacts were recovered from these features and their amorphous shape suggests they could be tree bowls.

Excavation of the features in Area B, first identified in Trench 09, revealed them to be a disused badger sett and therefore of no archaeological interest (Illus 6–9).

7. DISCUSSION

The archaeological features present in the development area most likely relate to 19th century agricultural activity and therefore have low significance. The ditch present along the eastern edge of Area A is likely to have marked a field boundary and the fact that it runs parallel to the current road indicates a relatively late date for this feature. The narrow ditches that run perpendicular to the larger ditch are later features and are likely to be related to rig and furrow. However they could also be the result of deep ploughing.

The features present in Area B initially resembled archaeological features, which is worth noting, but following excavation they were found to relate to badger activity.



Illus 4

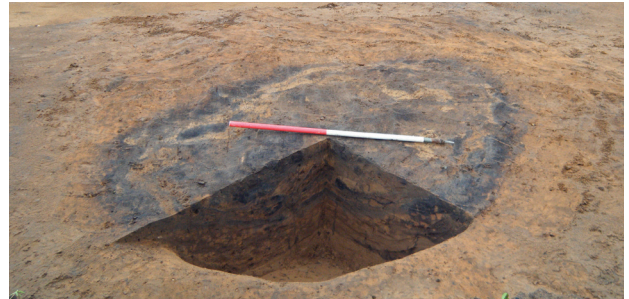
View of ditch [1110] looking E



Illus 5
View of rig divider looking N



Illus 6
Pre-ex view of features related to badger sett



Illus 7
View of features related to badger sett, looking SE



Illus 8
View of features related to badger sett, looking NW



Illus 9
View of features related to badger sett after excavation
showing tunnelling, looking W



8. APPENDICES

8.1 Appendix 1 – Site registers

Trench register

Trench no.	Orientation	Description	Length (m)	Max. depth (m)	Avg. depth (m)	Topsoil (m)	Photo no.
01	NW-SE	Topsoil: black silty sand. Subsoil: black silty sand with occasional small stones. Natural: coarse mid-brown sand. Areas of bioturbation & modern disturbance. Plough marks & furrows [0103], [0105], [0107] & [0111].	50	0.5	0.35	0.1	002, 007, 008
02	NNW-SSE	Topsoil: black silty sand. Subsoil: black silty sand with occasional small stones. Natural: coarse mid-brown sand. Plough marks & furrows [0203], [0205] & [0207].	50	0.6	0.45	0.15	–
03	E-W	Topsoil: black silty sand. Subsoil: black silty sand with occasional small stones. Natural: coarse mid-brown sand. Plough marks & furrows [0303], [0305], [0308] & [0310].	50	0.5	0.4	0.1	013, 014, 019, 020, 021
04	NE-SW	Topsoil: black silty sand. Subsoil: black silty sand with occasional small stones. Natural: coarse mid-brown sand. Plough marks & furrows [0403] & [0405].	50	0.55	0.4	0.15	–
05	NE-SE	Topsoil: black silty sand. Subsoil: black silty sand with occasional small stones. Natural: coarse mid-brown sand. Bioturbation & plough marks throughout. No features.	50	0.45	0.35	0.15	–
06	NW-SE	Topsoil: black silty sand. Subsoil: black silty sand with occasional small stones. Natural: coarse mid-brown sand. Bioturbation & plough marks throughout. No features.	50	0.6	0.35	0.15	–
07	N-S	Topsoil: black silty sand. Subsoil: black silty sand with occasional small stones. Natural: coarse mid-brown sand. Bioturbation & plough marks throughout. Ridge & furrow [0703].	50	0.4	0.35	0.15	–
08	E-W	Topsoil: black silty sand. Subsoil: black silty sand with occasional small stones. Natural: coarse mid-brown sand. Bioturbation & plough marks throughout. Ridge & furrow.	50	–	–	–	–
09	NE-SW	Topsoil: black silty sand. Subsoil: black silty sand with occasional small stones. Natural: coarse mid-brown sand. Possible pits [0903], [0907], [0909], terminus of linear [0905]. Excavation revealed features to be caused by badger activity.	50	–	0.4	–	–
10	NW-SE	Topsoil: black silty sand. Subsoil: black silty sand with occasional small stones. Natural: coarse mid-brown sand. No features.	50	–	–	–	–
11	NE-SW	Topsoil: black silty sand. Subsoil: black silty sand with occasional small stones. Natural: coarse mid-brown sand. Bioturbation & plough marks throughout. Sub-/irregular oval feature, possible pit [1103]. Revealed in excavation to be a tree bole.	50	–	0.4	0.15	–

Trench no.	Orientation	Description	Length (m)	Max. depth (m)	Avg. depth (m)	Topsoil (m)	Photo no.
12	N-S	Topsoil: black silty sand. Subsoil: black silty sand with occasional small stones. Natural: coarse mid-brown sand. Bioturbation & plough marks throughout. [1203]; ridge & furrow.	50	–	0.45	0.15	–
13	E-W	Topsoil: black silty sand. Subsoil: black silty sand with occasional small stones. Natural: coarse mid-brown sand.	50	–	–	–	–
14	–	Topsoil: black silty sand. Subsoil: black silty sand with occasional small stones. Natural: coarse mid-brown sand.	50	–	–	–	–
15	–	Topsoil: black silty sand. Subsoil: black silty sand with occasional small stones. Natural: coarse mid-brown sand.	50	–	–	–	–

Evaluation context register

Context no.	Trench no.	Description	Length (m)	Width (m)	Depth (m)
0103	01	Linear feature. Aligned NE-SW. Irregular & shallow. Filled by [0104]. Plough furrow.	–	–	–
0104	01	Fill of [0103]. Fill of plough furrow.	–	–	–
0105	01	Linear feature. Aligned NE-SW. Gently sloping sides with a rounded base & gradual breaks of slope. Same as [0205] in Trench 02. Filled by [0106]. Plough furrow.	–	0.7m	0.08m
0106	01	Fill of [0105]. Dark brownish orange loose sand with occasional small stone inclusions. Same as [0206] in Trench 02. Fill of plough furrow.	–	0.7m	0.08m
0107	01	Linear feature. Aligned NE-SW. Gently sloping sides with an irregular rounded to uneven base & slight breaks of slope. Same as [0207] in Trench 02. Filled by [0108]. Plough furrow.	–	2m	0.25m
0108	01	Fill of [0107]. Light to mid-brown loose sand. Fill of plough furrow.	–	2m	0.25m
0109	01	Modern cut mark.	–	–	–
0110	01	Fill of modern shallow cut mark.	–	–	–
0111	01	Linear feature. Aligned NE-SW. Irregular & difficult to perceive. Steeply sloping sides with an irregular base & abrupt breaks of slope. Same as [0203] in Trench 02 & [0305] in Trench 03. Filled by [0112]. Plough furrow.	–	1m	0.5m
0112	01	Fill of [0111]. Mottled light & dark brown loose sand with occasional charcoal flecks & small stone inclusions. Same as [0204] in Trench 02 & [0306] in Trench 03. Fill of plough furrow.	–	1m	0.5m
0203	02	Linear feature. Aligned NE-SW. Irregular & difficult to perceive. Steeply sloping sides with an irregular base & abrupt breaks of slope. Same as [0111] in Trench 01 & [0305] in Trench 03. Filled by [0204]. Plough furrow.	–	1m	0.5m
0204	02	Fill of [0203]. Mottled light & dark brown loose sand with occasional charcoal flecks & small stone inclusions. Same as [0112] in Trench 01 & [0306] in Trench 03. Fill of plough furrow.	–	1m	0.5m
0205	02	Linear feature. Aligned NE-SW. Gently sloping sides with a rounded base & gradual breaks of slope. Same as [0105] in Trench 01. Filled by [0206]. Plough furrow.	–	0.7m	0.08m
0206	02	Fill of [0205]. Dark brownish orange loose sand with occasional small stone inclusions. Same as [0106] in Trench 01. Fill of plough furrow.	–	0.7m	0.08m
0207	02	Linear feature. Aligned NE-SW. Gently sloping sides with an irregular rounded to uneven base & slight breaks of slope. Same as [0107] in Trench 01. Filled by [0208]. Plough furrow.	–	2m	0.25m
0208	02	Fill of [0207]. Light to mid-brown loose sand. Same as [0108] in Trench 01. Fill of plough furrow.	–	2m	0.25m
0303	03	Possible linear feature. Aligned NW-SE. Filled by [0304]. Plough mark.	–	–	–
0304	03	Fill of [0303]. Fill of plough mark.	–	–	–



Context no.	Trench no.	Description	Length (m)	Width (m)	Depth (m)
0305	03	Linear feature. Aligned NE-SW. Gently sloping sides with a rounded base & gradual breaks of slope. Same as [111] in Trench 01 & [203] in Trench 02. Filled by [306] & [307]. Cut by [308]. Plough furrow.	–	1m	0.4m
0306	03	Upper fill of [0305]. Mid-brown loose sand with occasional small stone inclusions. Possibly the same as [0112] in Trench 01 & [0204] in Trench 02, but more here more distinct as two contexts. Fill of plough furrow.	–	1m	0.15m
0307	03	Lower fill of [0305]. Light brown loose sand with occasional small stone inclusions. Possibly the same as [0112] in Trench 01 & [0204] in Trench 02, but more here more distinct as two contexts. Fill of plough furrow.	–	1m	0.2m
0308	03	Linear feature. Aligned NW-SE. Steep sides with a rounded base & gradual breaks of slope. Filled by [0309]. Cuts [0305]. Possible plough mark.	–	0.6m	0.35m
0309	03	Fill of [0308]. Dark brown loose sand. Fill of possible plough mark.	–	0.6m	0.35m
0310	03	Linear feature. Aligned NW-SE. Filled by [0311]. Plough mark.	–	–	–
0311	03	Fill of [0310]. Fill of plough mark.	–	–	–
0403	04	Linear feature. Aligned E-W. Filled by [0404]. Plough mark.	–	–	–
0404	04	Fill of [0403]. Fill of plough mark.	–	–	–
0405	04	Linear feature. Aligned N-S. Filled by [0406]. Plough mark.	–	–	–
0406	04	Fill of [0405]. Fill of plough mark.	–	–	–
0703	07	Linear feature. Aligned N-S. Filled by [0704]. Plough furrow.	–	–	–
0704	07	Fill of [0703]. Fill of plough furrow.	–	–	–
0903	09	Circular feature. Gently sloping sides with a rounded base & gradual breaks of slope. Filled by [0904]. Possible pit. Excavation revealed feature to be caused by badger activity.	0.8m	0.83m	0.13m
0904	09	Fill of [0903]. Mottled mid-brown loose sand. Fill of possible pit. Filled by [0904]. Possible pit. Excavation revealed feature to be caused by badger activity.	0.8m	0.83m	0.13m
0905	09	Terminus of linear feature. Filled by [0906]. Filled by [0904]. Excavation revealed feature to be caused by badger activity.	–	–	–
0906	09	Fill of [0905]. Filled by [0904]. Excavation revealed feature to be caused by badger activity.	–	–	–
0907	09	Sub-oval/irregular feature. Steeply sloping sides with a rounded base & abrupt breaks of slope. Filled by [0908]. Excavation revealed feature to be caused by badger activity.	1.6m	–	0.6m
0908	09	Fill of [0907]. Mottled mid-brown loose sand. Excavation revealed feature to be caused by badger activity.	1.6m	–	0.6m
0909	09	Circular feature. Steeply sloping sides with an uneven base & gradual breaks of slope. Filled by [0910], [0911] & [0912]. Possible pit. Excavation revealed feature to be subsidiary entrance to badger sett.	1.3m	–	0.56m
0910	09	Fill of [0909]. Dark grey & brown loose sand with rare charcoal fleck inclusions. Badger activity.	1.3m	–	0.04m
0911	09	Fill of [0909]. Light brown loose sand. Badger activity.	1.3m	–	0.1m
0912	09	Fill of [0909]. Mottled mid-brown friable sand. Badger activity.	1.3m	–	0.3m
0913	09	Void.	–	–	–
0914	09	Void.	–	–	–
0915	09	Void.	–	–	–
1103	11	Sub-/irregular oval feature. Gently sloping sides with irregular base & gradual breaks of slope. Filled by [1104]. Possible pit. Excavation revealed feature to be a treebole.	3m	2m	0.18m
1104	11	Fill of [1103]. Dark brown friable, coarse loamy silty sand. Homogenous. Fill of treebole.	3m	2m	0.18m
1203	12	Linear feature. Filled by [1203]. Ridge & furrow.	–	–	–
1204	12	Fill of [1203]. Fill of ridge & furrow.	–	–	–

Excavation context register

Context no.	Area	Description	Length (m)	Width (m)	Depth (m)
1106	A	Linear feature. Aligned SE-NW. Variable steep to gently sloping sides, rounded to flat base & sharp to gradual breaks of slope. Filled by [1107]. Drain or boundary ditch.	16m (as exposed)	0.6–0.7m (max)	0.2–0.25m (max)
1107	A	Fill of [1106]. Dark brown friable to firm sandy loam with occasional shale fragment inclusions. Artefacts recovered include one terracotta pipe fragment & one shard of refined earthenware (blue transfer print). Natural silting of ditch/drain.	16m (as exposed)	0.6–0.7m (max)	0.2–0.25m (max)
1108	A	Linear feature. Aligned SE-NW, parallel at a distance of 3m to [1106]. Variable steep to gently sloping sides, uneven, undulating base & sharp to gradual breaks of slope. SE terminus tapers to rounded point. Filled by [1109]. Drain or boundary ditch.	16m (as exposed)	0.2–0.65m (max)	0.16m
1109	A	Fill of [1108]. Very dark brown to black firm sandy silt with frequent lenses of orangey brown, very finely grained sand & occasional small sub-angular & rounded stone inclusions. Artefacts recovered include two terracotta fragments. Natural silting of drain/ditch.	16m (as exposed)	0.2–0.65m (max)	0.16m
1110	A	Linear feature. Aligned SW-NE with a slight curve to the NE end. Occupies lowest point of surrounding terrain, running parallel to road. Gently sloping sides, rounded base & gradual breaks of slope. Truncated by four linear features aligned SE-NW. Filled by [1111] & [1112]. Drainage or boundary ditch.	40m (as exposed)	1.3–1.6m (max)	0.25m (max)
1111	A	Fill of [1110]. Mottled dark, light & greyish brown & orange friable sandy silty loam. Artefacts recovered include one fragment of clear glass, one marble bottle stopper, one iron (Fe) nail, refined earthenware & terracotta fragments. Silting in drainage ditch? Planting in boundary ditch?	40m (as exposed)	1.3–1.6m (max)	0.25m (max)
1112	A	Basal fill of [1110]. Mottled yellow, orange & brown friable, slightly clayey, sand with occasional sub-rounded small stone inclusions towards base. Slopewash.	c.25m	1.3–1.6m (max)	–
1113	A	Sub-oval feature. Gently sloping sides, flat to rounded base & gradual breaks of slope. Located to the W of pit [1103] identified in evaluation. Filled by [1114]. Possible tree bole?	1.8m	1.6m	0.1–0.16m (max)
1114	A	Fill of [1113]. Dark brown firm to friable loamy silty coarse sand with occasional shale fragment & rounded gravel inclusions. Natural deposition within treebole?	–	–	–
0916	B	Sub-oval feature. Variable sloping sides, uneven base & undefined breaks of slope. Badger activity, subsidiary entrance to sett.	2.37m	1.06m	0.82–1.11m (max)
0917	B	Fill of [0916]. Mid-dark brown loamy sand with lense of very dark grey humic loamy sand. Deposition due to badger activity.	1.43m	–	0.48m
0918	B	Amorphous linear feature. Aligned roughly N-S. Very irregular sides & base; variable steeply sloping sides, undercutting to S end, uneven base & undefined breaks of slope. General trend downwards at S end; feature is deeper & sides are steeper. Bands of deposits 'slumping' into feature at roughly consistent 45° angle. Primary entrance to badger sett.	–	–	–
0919	B	Oval/sub-circular feature. Steep sides, uneven base & gradual breaks of slope. Filled by [0920], [0932] & [0933]. Badger activity, tunnelling etc.	c.2.84m	c.1.90m	c.0.85m
0920	B	Upper fill of [0919]. Dark grayish black firm sand with lenses of light brown sand. Recently decomposed organic material (turf?). Deposition due to badger activity.	c.2.84m	c.1.90m	0.39m
0921	B	Fill of [0916]. Yellow firm sand. Underlying [0917].	–	–	–
0922	B	Fill of [0916]. Brown firm silty sand. Underlying [0921].	–	–	–
0923	B	Fill of [0916]. Mottled brown firm silt. Underlying [0922].	–	–	–
0924	B	Fill of [0916]. Light brown firm sand. Underlying [0923].	–	–	–
0925	B	Fill of [0916]. Light yellow firm sand. Underlying [0924].	–	–	–
0926	B	Fill of [0916]. Mottled firm silty sand. Lense underlying [0921].	–	–	–
0927	B	Possible cut intersecting [0916]. Very steeply sloping sides, flat base & sharp breaks of slope.	–	–	–
0928	B	Fill of [0927].	–	–	–



Context no.	Area	Description	Length (m)	Width (m)	Depth (m)
0929	B	Terminus of curvilinear feature. Badger activity, tunnelling etc.	–	–	–
0930	B	Upper fill of [0929].	–	–	–
0931	B	Oval/sub-oval feature. Steeply sloping sides, curved base & sharp breaks of slope. Very regular shape and cut with clean, neat sides & base. Cut of oval pit.	1.43m	0.8m	0.54m
0932	B	Fill of [0919]. Mid-brown firm, well-sorted sand with lenses of light brown & black decayed organic material. Underlying [0920]. Deposition due to badger activity.	2.61m	1.8m	0.21m
0933	B	Basal fill of [0919]. Light brown friable sand. Re-deposited natural due to badger activity.	2.7m	1.26m	0.35m
0934	B	Sub-circular feature with linear extension. Steeply sloping sides, uneven base & variable sharp breaks of slope. Badger activity.	2.6m	1.02m	0.8m (max)
0935	B	Fill of [0934]. Dark greyish brown friable loamy sand with lenses of yellow sand & greyish black humic material & rare sub-rounded stone inclusions. Recently decomposed organic material. Deposition due to badger activity.	2.6m	1.02m	0.5m (max)
0936	B	Fill of [0934]. Yellow sand with small lenses of dark grey sand. Probably the same as [0937]. Re-deposited natural due to badger activity.	1.4m	1m	0.6m
0937	B	Fill of [0934]. Yellow sand with small lenses of dark grey sand. Probably the same as [0936]. Re-deposited natural due to badger activity?	1.93m	0.35m	0.77m
0938	B	Fill of [0934]. Mottled orangey light & dark grey friable sand.	0.62m	0.33m	0.27m
0939	B	Basal fill of [0931]. Mid-orangey yellow friable very slightly silty sand with several small lenses of silt. Re-deposited natural due to weathering.	1.43m	0.8m	0.22m
0940	B	Upper fill of [0931]. Mid- to dark brown firm fine sandy silt. Rich humic deposit.	1.43m	0.8m	0.32m
0941	B	Primary fill of [0918]. Mid-orangey yellow friable, slightly silty sand. Slumping down from top of feature, tapering towards base. Deposition due to badger activity.	1.95m	–	0.52m (max)
0942	B	Fill of [0918]. Pale yellow friable sand. Re-deposited natural due to badger activity.	1.75m	–	0.43m (max)
0943	B	Fill of [0918]. Mottled yellowish brown & mid-brown firm sandy silt. Deposition due to badger activity.	2.9m	–	0.32m (max)
0944	B	Fill of [0918]. Pale yellow friable sand. Re-deposited natural due to badger activity.	2.75m	–	0.22m (max)
0945	B	Fill of [0918]. Yellowish brown firm sandy silt. Deposition due to badger activity.	1.2m	–	0.15m (max)
0946	B	Fill of [0918]. Mixed deposit of grey & black sand, dark brown silt & humic patches of decayed turf. Deposition due to badger activity.	1.35m	–	0.22m (max)
0947	B	Fill of [0918]. Mixed deposit of dark brown friable sand & sandy silt. Deposition due to badger activity.	2.55m	–	0.28m (max)
0948	B	Fill of [0918]. Mid-brown firm, slightly sandy silt. One large faunal bone recovered (possibly badger?). Deposition due to badger activity.	1.77m	–	0.21m (max)
0949	B	Fill of [0918]. Pale yellow friable sand. Re-deposited natural due to badger activity.	1.38m	–	0.13m (max)
0950	B	Fill of [0918]. Mid-brown firm, slightly sandy silt. Deposition due to badger activity.	1.92m	–	0.16m (max)
0951	B	Fill of [0918]. Mid-dark brown firm sandy silt. Deposition due to badger activity.	1.14m	–	0.21m (max)
0952	B	Fill of [0918]. Mixed deposit of mid-brownish yellow silt, pale yellow sand & greyish black lenses of decayed turf. Deposition due to badger activity.	1.38m	–	0.17m (max)
0953	B	Fill of [0918]. Mixed deposit of black & dark brown sand & decayed turf. Deposition due to badger activity.	0.64m	–	0.17m (max)
0954	B	Fill of [0918]. Mid-brown firm, slightly sandy silt. Deposition due to badger activity.	1.58m	–	0.21m (max)
0955	B	Fill of [0918]. Mid-dark brown firm sandy silt. Deposition due to badger activity.	0.52m	–	0.18m (max)

<i>Context no.</i>	<i>Area</i>	<i>Description</i>	<i>Length (m)</i>	<i>Width (m)</i>	<i>Depth (m)</i>
0956	B	Fill of [0918]. Mixed deposit of yellow sand, orange & mid-brown silt & lenses of greyish black decayed turf. Deposition due to badger activity.	2.27m	–	0.45m (max)
0957	B	Layer of charcoal, burnt sand, silt & ash with frequent charcoal & wood lumps & fragments.	0.63m	0.53m	0.15m (max)
0958	B	Layer of charcoal & black silt - primarily consists of charcoal lumps & fragments in a minimal silt matrix.	0.18m	0.19m	0.03m
0959	B	Layer of charcoal, silt & burnt sand with frequent small charcoal inclusions.	0.56m	0.33m	0.13m

Photo register

<i>Photo no.</i>	<i>Colour print</i>	<i>Colour slide</i>	<i>Digital</i>	<i>Direction facing</i>	<i>Description</i>
100	3/34	3/36	031	–	ID shot – film no. 3
101	3/33	3/35	032	NW	SE facing section of Slot 1 through [1106]/[1107]
102	3/32	3/34	033	NW	SE facing section of Slot 2 through [1106]/[1107]
103	3/31	3/33	034	SW	NE facing section of Slot 2 through [1108]/[1109]
104	3/30	3/32	035	SW	NE facing section of Slot 1 through [1108]/[1109]
105	3/29	3/31	036	NE	SW-facing section of Slot 1 through [1110]/[1111]
106	3/28	3/30	037	NE	General shot of [1110]/[1111]
107	3/27	3/29	038	SW	General shot of [1110]/[1111]
108	3/26	3/28	039	W	E facing section of [0916]
109	3/25	3/27	040	N	S facing section of [0916]
110	3/24	3/26	041	SE	NW facing section of [0918]
111	3/23	3/25	042	NE	SW facing section of Slot 3 through [1110]/[1111]
112	3/22	3/24	043	NE	SW facing section of Slot 4 through [1110]/[1111]
113	–	–	044	NE	General shot of [1110]/[1111]
114	3/21	3/23	045	SE	Pre-ex view of pit group
115	3/20	3/22	046	N	Pre-ex view of linear features
116	3/19	3/21	047	NE	Pre-ex view of linear features
117	3/18	3/20	048	E	Pre-ex view of linear features
118	3/17	3/19	049	SE	Pre-ex view of [0919]
119	3/16	3/18	050	SSE	Oblique shot of N & NW facing sections on [0918]
120	3/15	3/17	051	E	W facing section of [0918]
121	3/14	3/16	052	S	N facing sections of [0918]
122	3/13	3/15	053	SE	NW facing section of [1113]
123	3/12	3/14	054	NW	SE facing section of [1103]
124	3/11	3/13	055	S	NE & NW facing sections of [1103]
125	3/10	3/12	056	SE	General shot of [0919]
126	3/9	3/11	057	SE	NW facing section of [0919] – NW quad
127	3/8	3/10	058	SW	NE facing section of [0919] – NW quad
128	3/7	3/9	059	N	S facing section of Slot 3 through [0918]
129	3/6	3/8	060	W	E facing section of Slot 3 through [0918]
130	3/5	3/7	061	NW	General shot of [0919] – SE quad



<i>Photo no.</i>	<i>Colour print</i>	<i>Colour slide</i>	<i>Digital</i>	<i>Direction facing</i>	<i>Description</i>
131	3/4	3/6	062	SE	SE facing section of [0919] – SE quad
132	3/3	3/5	063	SW	SW facing section of [0919] – SE quad
133	3/2	3/4	064	N	S facing section of [0916]
134	3/1	3/3	065	W	E facing section of [0916]
135	–	3/2	–	–	General working shot
136	–	3/1	–	–	General working shot
137	4/24	4/36	066	E	W facing section of [0916]
138	4/23	4/35	067	S	N facing section of [0916]
139	–	–	068	SE	W & N facing sections of [0916]
140	4/22	4/34	069	NW	SE facing section of Slot 4 through [0918]
141	4/21	4/33	070	N	S facing section of Slot 4 through [0918]
142	4/20	4/32	071	W	Pre-ex shot of [0934]
143	4/19	4/31	072	N	S facing section through terminus [0929]
144	4/18	4/30	073	W	General view of linear terminus [0929]
145	4/17	4/29	074	NW	SE facing section of [0918]
146	4/16	4/28	075	SW	NE facing section of [0931]
147	4/15	4/27	076	NW	SE facing section of [0929]
148	4/14	4/26	077	W	SE facing section of [0929]
149	4/13	4/25	079	SE	Pre-ex shot of burnt layers [0957], [0958] & [0959]
150	4/12	4/24	079	–	Pre-ex shot of [0957]
151	4/11	4/23	083	NE	SW facing section of [0934]
152	4/10	4/22	084	SW	NE facing section of [0934]
153	4/9	4/21	086	SE	NW facing section of [0934]
154	4/8	4/20	087	NW	SE facing section of [0934]
155	4/7	4/19	089	SE	NW facing section of [0934]
156	4/6	4/18	090	E	General pre-ex shot of W end of Area B
157	4/5	4/17	091	NNE	General pre-ex shot of W end of Area B
158	4/4	4/16	092	ENE	WSW facing section through badger sett at W end of Area B
159	4/3	4/15	093	W	E facing section through badger sett at W end of Area B
160	4/2	4/14	094	W	E facing section through badger sett at W end of Area B
161	4/1	4/13	095	E	W facing section through badger sett at W end of Area B
162	–	4/12	096	S	N facing end of [0918]: primary entrance to badger sett
163	–	4/11	097	W	E facing side of [0918]: primary entrance to badger sett
164	–	4/10	098	N	S facing section through burnt deposit [0957]
165	–	4/9	099	E	General post-ex shot of W end of Area B
166	–	4/8	100	SE	General post-ex shot of W end of Area B
167	–	4/7	101	SSE	General post-ex shot of W end of Area B
168	–	4/6	102	NW	SE facing extended section through burnt deposit [0957]
169	–	4/5	103	W	E facing section through burnt deposit [0958]
170	–	4/4	104	W	E facing section through burnt deposit [0959]

Drawing register

Drawing no.	Scale	Plan/Section	Description
1	1:10	S	SW facing section of Slot 4 through [1110]
2	1:10	S	SW facing section of Slot 3 through [1110]
3	1:10	S	SE facing section of [0919] – SE quad
4	1:10	S	NW facing section of [0919] – NW quad
5	1:10	S	S facing section of [0916]
6	1:10	S	N facing section of [0916]
7	1:10	S	W facing section of [0919] – NW quad
8	1:10	S	SE facing section of [0919] – SE quad
9	1:10	S	E facing section of [0919] – SE quad
10	1:10	S	SW facing section of [0934]
11	1:10	S	NE facing section of [0934]
12	1:10	S	NW facing section of [0934]
13	1:10	S	SE facing section of [0934]
14	1:10	S	NW facing section of [0934]
15	1:10	S	SE facing long section through [0918] & [0931]
16	1:10	S	S & N facing sections of Slot 2 through [0918]
17	1:10	S	S & N facing sections of Slot 1 through [0918]
18	1:10	S	N facing section of [0931]
19	1:10	S	W facing section of [0916]
20	1:10	S	E facing section of [0916]

Sample register

Sample no.	Context no.	Description
1	0957	Mixed deposit of charcoal, burnt sand, silt & ash



Headland Archaeology (UK) Ltd
© Headland Archaeology (UK) Ltd 2011

North East (HQ)

13 Jane Street, Edinburgh EH6 5HE

T 0131 467 7705 • **F** 0131 467 7706 • **E** office@headlandarchaeology.com

North West

10 Payne Street, Glasgow G4 0LF

T 0141 354 8100 • **F** 0141 332 9388 • **E** glasgowoffice@headlandarchaeology.com

Midlands & West

Unit 1, Premier Business Park, Faraday Road, Hereford HR4 9NZ

T 0143 236 4901 • **F** 0143 236 4900 • **E** hereford@headlandarchaeology.com

South & East

Technology Centre, Stanbridge Road, Leighton Buzzard, Bedfordshire LU7 4QH

T 01525 850 878 • **E** leighton.buzzard@headlandarchaeology.com

www.headlandarchaeology.com