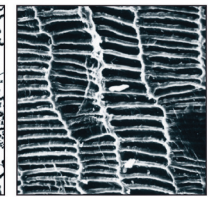
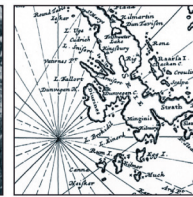
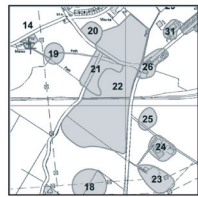


GWPK09/009



EXCAVATION AT TURBINE 38: GRIFFIN WINDFARM, PERTH & KINROSS

for Griffin Wind Farm Ltd

04/00004/WIND

November 2011



HEADLAND
ARCHAEOLOGY (UK) Ltd



EXCAVATION AT TURBINE 38: GRIFFIN WINDFARM, PERTH & KINROSS

for Griffin Wind Farm Ltd

04/00004/WIND

November 2011

HA Job no.: GWPK09/009

NGR: 743800, 294300

Parish: Little Dunkeld

Council: Perth and Kinross

OASIS ref.: Headland1-113298

Archive will be deposited with: RCAHMS

Project Manager	Christopher Lowe
Author	Laura Scott
Fieldwork	Magnar Dalland, Stephen Digney, Peta Glew, Calum Henderson, James Lowe, Nuala Marshall, Fraser McFarlane, Sandra Mulligan, Ross Murray & Laura Scott
Graphics	Julia Bastek
Specialists	Sarah-Jane Haston, Environmental Julie Franklin, Finds
Approved by	Christopher Lowe, Project Manager

C. S. Lowe



Headland Archaeology (UK) Ltd
© **Headland Archaeology (UK) Ltd 2011**

13 Jane Street, Edinburgh EH6 5HE
T 0131 467 7705 • F 0131 467 7706 • E office@headlandarchaeology.com
www.headlandarchaeology.com

CONTENTS

1.	INTRODUCTION	1
2.	ARCHAEOLOGICAL BACKGROUND	1
3.	OBJECTIVES	3
4.	METHODOLOGY	3
	4.1 Excavation of cairns at Turbine 38	3
	4.2 Excavation of linear banks	3
	4.3 Watching brief	3
5.	RECORDING	3
6.	RESULTS	5
	6.1 Excavation at Turbine 38	5
	<i>Cairn 1 [050]</i>	5
	<i>Cairn 2 [053]</i>	6
	<i>Cairn 3 [054]</i>	7
	<i>Cairn 4 [055]</i>	8
	<i>Cairn 5 [056]</i>	9
	<i>Cairn 6 [057]</i>	10
	<i>Pit / stone-hole [082]</i>	13
	<i>Stone banks [131], [132] & [133]</i>	13
	6.2 Features uncovered during watching brief at Turbine 38	13
	<i>Cairn 7 [239]</i>	13
	<i>Stone bank [238]</i>	13
7.	RESULTS OF PALAEO-ENVIRONMENTAL ASSESSMENT	15
	7.1 Introduction	15
	7.2 Method	15
	7.3 Results	15
	7.4 Plant remains	15
	7.5 Plant material available for AMS	15
	7.6 Discussion	15
	7.7 Recommendations	15
8.	FINDS ASSESSMENT	16
	8.1 Introduction	16
	8.2 Assemblage summary	16
	<i>Metalwork</i>	16
	<i>Glass</i>	16

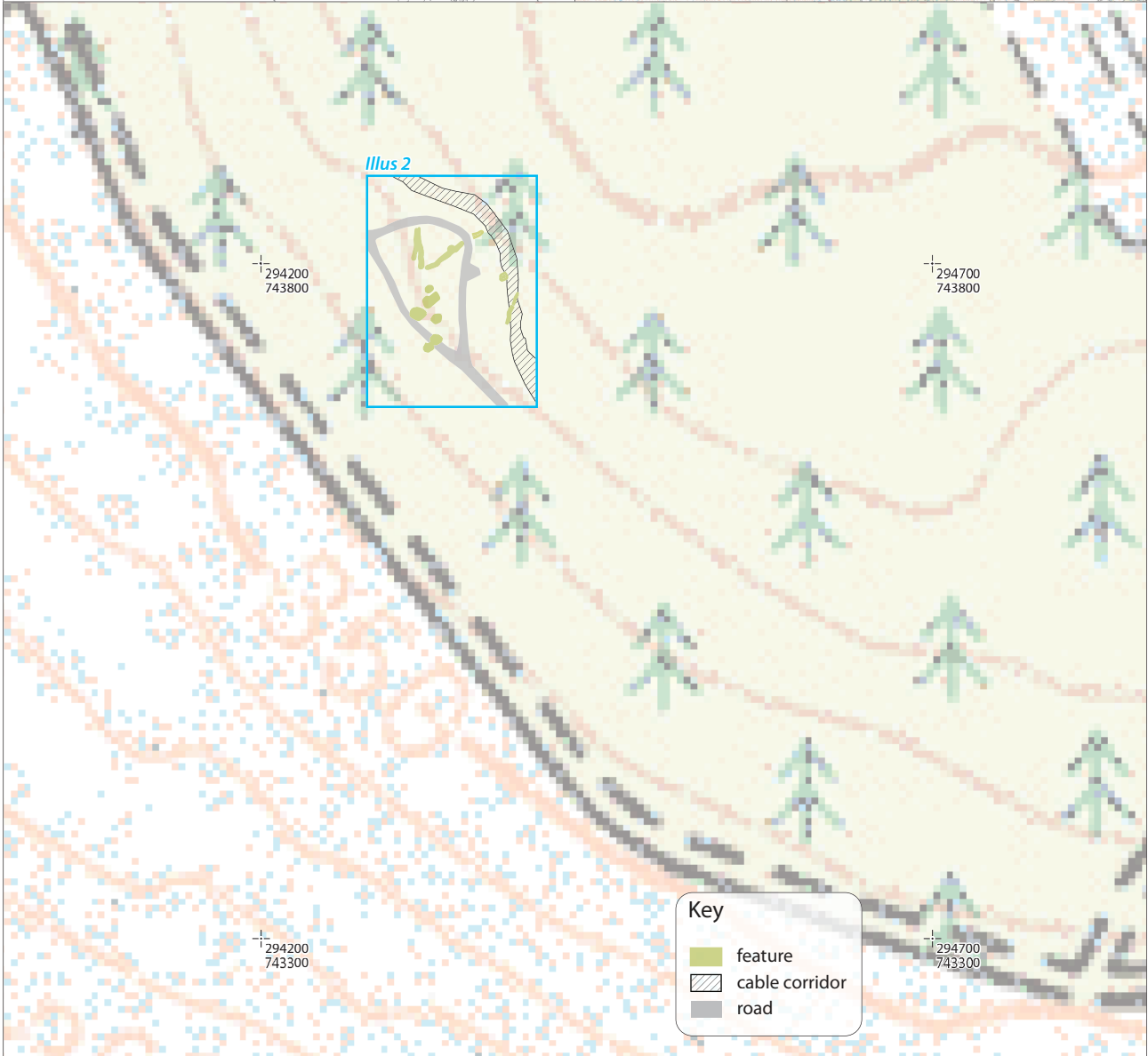
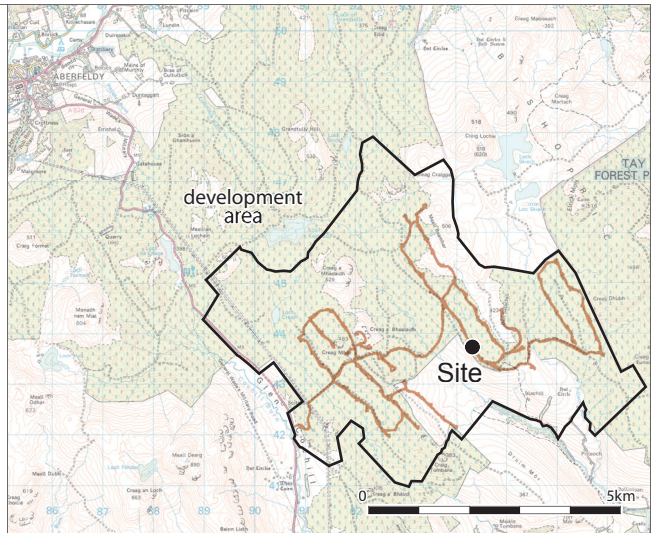
9. DISCUSSION	16
10. REFERENCES	17
APPENDICES	19
Appendix 1 – Site register	19
<i>Context register</i>	19
<i>Drawing register</i>	22
<i>Photo register</i>	22
<i>Small finds register</i>	31
<i>Sample register</i>	32
Appendix 2 – Environmental tables	33
<i>Retent sample results</i>	33
<i>Flotation sample results</i>	33
Appendix 3 – Finds catalogue	34

LIST OF ILLUSTRATIONS

<i>Illus 1</i>		x
	<i>Location map</i>	
<i>Illus 2</i>		2
	<i>Detailed site plan</i>	
<i>Illus 3</i>		4
	<i>Cairns 5 & 6 during excavation, view from SW</i>	
<i>Illus 4</i>		5
	<i>Cairn 1 [050], vertical rectified photograph</i>	
<i>Illus 5</i>		6
	<i>Cairn 2 [053], vertical rectified photograph</i>	
<i>Illus 6</i>		7
	<i>Cairn 3 [054], vertical rectified photograph</i>	
<i>Illus 7</i>		7
	<i>Cairn 3 [054], showing kerb [069], from NW</i>	
<i>Illus 8</i>		8
	<i>Cairn 4 [055], vertical rectified photograph</i>	
<i>Illus 9</i>		9
	<i>Cairn 5 [056], vertical rectified photograph</i>	
<i>Illus 10</i>		10
	<i>Cairn 6 [057], vertical rectified photograph</i>	
<i>Illus 11</i>		10
	<i>Cairn 6 [057], showing inner kerb [070], from SW</i>	
<i>Illus 12</i>		11
	<i>Vertical view of stone banks [131], [132] & [133]</i>	
<i>Illus 13</i>		13
	<i>Oblique view of stone banks [131], [132] & [133] from E</i>	
<i>Illus 14</i>		14
	<i>Plan of Cairn 7 [239]</i>	
<i>Illus 15</i>		14
	<i>Cairn 7 [239], ground view, from the E</i>	
<i>Illus 16</i>		15
	<i>Stone bank [238], from the E</i>	
<i>Illus 17</i>		16
	<i>E facing section through stone bank [238]</i>	

ACKNOWLEDGEMENTS

The programme of work reported here was commissioned and fully funded by SSE Renewables. Grateful thanks are due to Matt Hunter (SSER Site Construction Manager) and Emer Owens (Lagan Construction, Environmental Co-ordinator), through whom the archaeological fieldwork was co-ordinated. The advice of the Heritage Officers [Planning] at Perth & Kinross Heritage Trust as advisors to Perth & Kinross Council – initially Sarah Winlow and latterly Sarah Malone – is also gratefully acknowledged. Finally, my thanks to the entire field team who endured a Perthshire winter in what were often very difficult working conditions.



Key

- feature
- cable corridor
- road

Reproduced using digital 1:50,000 data supplied by Griffin Wind Farm Ltd. Ordnance Survey © Crown copyright 2011. All rights reserved.

Scale 1:5,000 @ A4



Illus 1
Location map

EXCAVATION AT TURBINE 38: GRIFFIN WINDFARM, PERTH & KINROSS

Headland Archaeology Ltd was commissioned by Griffin Wind Farm Ltd to carry out a series of archaeological works. This report is concerned with the investigations undertaken at Turbine 38. This involved the excavation of six cairns and three linear banks that had been identified during the course of a walk-over survey of the access tracks and turbine bases; in addition, a watching brief on the installation of a cable trench in the area to the east of Turbine 38 was also undertaken which resulted in the discovery of a seventh cairn and a fourth linear bank. The cairns varied in shape and form and three were kerbed, which led to the initial tentative identification of the features as possible funerary cairns. Excavation, however, established that the cairns are likely to be the result of land clearance in order to prepare and improve the land for cultivation and pasture. The abundance of cairns suggests that intensive agricultural activity was occurring in the area.

1

1. INTRODUCTION

Headland Archaeology Ltd was commissioned by Griffin Wind Farm Ltd to carry out a programme of archaeological works in advance of the construction of the wind farm. This phase of works included excavation of a previously-unrecorded group of monuments which were identified during the course of a walk-over survey of access tracks and turbine bases in the Ballinloan section of the wind farm.

The site, located within the construction footprint of Turbine 38, comprised a cluster of six cairns and three linear stone banks. Two of the cairns were identified during the course of the walk-over survey of the access tracks and turbine bases (Illus 1); another four cairns and three linear banks were uncovered during the archaeologically monitored removal of brash and logs. During a later phase of works which involved brash and tree stump clearance for the installation of a cable trench, in the area to the south-east of Turbine 38, a seventh cairn and another linear bank were discovered.

The programme of works follows earlier phases of work, which included a desk based assessment, walk-over survey and evaluation, undertaken as part of the Archaeological Mitigation Plan. This work was undertaken in accordance with the terms of a Written Scheme of Investigation produced in 2010 and agreed with Perth and Kinross

Heritage Trust (PKHT), as archaeological advisors to Perth & Kinross Council.

2. ARCHAEOLOGICAL BACKGROUND

The cairns and stone banks that were identified on the hillside lie within an archaeologically sensitive landscape. They were located within the Ballinloan area, to the east of an area previously identified as archaeologically significant in the archaeological survey that was undertaken in connection with the Environment Impact Assessment. Pitcarmick-type houses, associated field systems, cultivation remains, cairnfields and enclosures (NMRS NN94SW 28.02), believed to date to the later prehistoric and medieval period, have been recorded in this area.

Two of the previously unrecorded cairns at Turbine 38 were identified during a walkover survey in September 2010 (Scott 2010), located close together within the construction footprint of the proposed turbine and its access track. At the time of the survey, the area of the proposed turbine base and access track had been felled but the ground was still covered in brash. Following its removal during the course of the evaluation in February 2011, four further cairns and three linear dykes were uncovered. The cairns were distinctive in form, and



2



Illus 2
Detailed site plan

unlike the clearance cairns excavated at Turbine 26 on the western side of Ballinloan burn (Dalland report in prep), appeared to be deliberately grouped together. Their square or sub-rectangular shape, form and location led them to be tentatively identified as possibly burial cairns, and potentially of later prehistoric date, similar to Pictish square cairns which have been identified elsewhere (Scott 2011). A seventh cairn and another linear bank were uncovered during a watching-brief on the removal of brush and logs for the installation of a cable trench in the area to the south-east of Turbine 38.

3. OBJECTIVES

The objectives of the excavation were:

- to preserve by record archaeological remains threatened by the proposed development works.
- to undertake an appropriate level of assessment and reporting to meet the requirements of the Planning Authority.

4. METHODOLOGY

4.1 Excavation of cairns at Turbine 38

The cairns and linear banks lay within the footprint of Turbine 38 and would therefore be directly impacted upon during the construction programme.

Turf, topsoil and overlying vegetation were removed by hand from the cairns. Each cairn was fully cleaned by hand to facilitate the recording of the structures in plan (Illus 3). The cairns were half-sectioned as appropriate and stones were removed stratigraphically. Vertical photographs, subsequently rectified, were taken of each deposit using a digital camera that was mounted on an extendable pole and linked to a PC.

All archaeologically relevant deposits and structures were assigned context numbers and described on pro forma context sheets (Appendix 1). Sections were drawn as appropriate at a scale of 1:10 (Appendix 1). A photographic record was taken using black and white prints and digital photographs (Appendix 1). An overall site plan was recorded digitally using a PC running CAD software linked to a total station theodolite and related to the National Grid.

Following the removal of the cairn structure the ground beneath was fully cleaned and investigated. Sondages were excavated through the sub-cairn surface in order to allow inspection of the subsoil and to test whether any additional archaeological features were present.

Archaeological deposits were sampled systematically in accordance with Headland Archaeology Ltd standard environmental sampling practises. A minimum sample of 10 litres and maximum of 30 litres was taken from each deposit for wet sieving. The samples are catalogued in the sample register (Appendix 1) and were assessed by an environmental specialist, Sarah-Jane Haston (Appendix 2). Artefacts that were recovered during the excavations were X-rayed and then assessed by finds specialist Julie Franklin and are catalogued in Appendix 3. These will be subject to standard Treasure Trove procedures.

4.2 Excavation of linear banks

Turf, topsoil and overlying vegetation were removed by hand from the linear banks. The banks were then hand cleaned. Vertical photographs were taken for rectification purposes. The features were recorded digitally using a PC running CAD software linked to a total station theodolite and related to the National Grid. Standard 1m wide sections were then excavated through the banks to natural subsoil.

4.3 Watching brief

A watching brief was undertaken during the removal of brush and tree stumps prior to the installation of cable trenches in the area adjacent to T38, to ensure that any archaeologically significant features or deposits uncovered would be appropriately recorded.

The brush and stump removal was carried out using a 360° mechanical excavator equipped with a toothed ditching bucket, operating under continuous archaeological supervision. A cairn and linear bank identified during the works were hand-cleaned, investigated, surveyed using dGPS and recorded.

Following recording, the features were half sectioned and removed under archaeological supervision, using a 360° mechanical excavator equipped with a flat bladed ditching bucket.

5. RECORDING

All recording was in accordance with the Institute for Archaeologists standards and guidance. All contexts, small finds and environmental samples were given unique numbers and all recording was undertaken on pro forma record cards that conform to accepted archaeological norms. All stratigraphic relationships were recorded.

Digital photographs and black and white prints were taken to record archaeological contexts and to illustrate the general nature of the work. A graduated metric scale was clearly visible in record photographs of contexts. All



photographs were recorded by individual print number alongside information on the context and direction of view.

An overall site plan was recorded using Total Station survey and related to the National Grid. Hand-drawn plans of individual features at a scale of 1:20 were drawn where appropriate. Sections and elevations were drawn at 1:10 where appropriate.

All artefacts retrieved during the excavation have been catalogued and will be subject to standard Treasure Trove procedures. Bulk finds were collected by context. Small finds were recorded in a register and plotted using dGPS where appropriate. Finds were stored in appropriate conditions as advised by Headland's Finds Manager.

4



Illus 3

Cairns 5 & 6 during excavation, view from SW

6. RESULTS

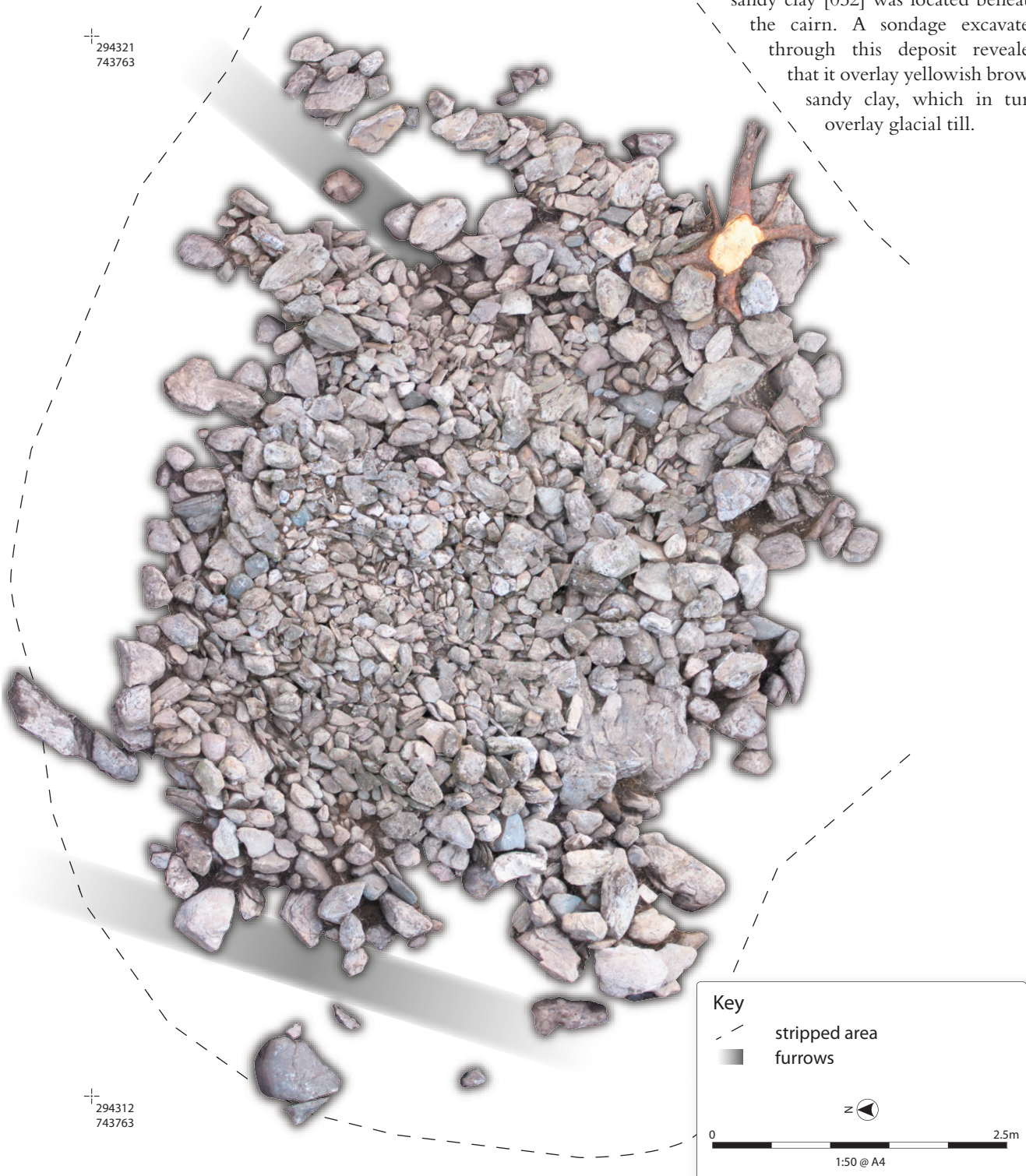
6.1 Excavation at Turbine 38

Cairn 1 [050]

Roughly oval on plan with its longer axis aligned NW-SE, Cairn 1 was approximately 8.1m long, 7.8m wide and 0.45m high, making it one of the largest of the cairns on the site (Illus 2). The cairn had been truncated on its NW and SE sides by plough furrows, displacing several stones in these areas [072]. The deposition of stone in the cairn appeared to be ordered, with medium to large stones [119] forming the base of the cairn. Medium sized stones [096] overlay these and small stones [092] were concentrated in the centre of the cairn (Illus 4). Natural red-brown sandy clay [052] was located beneath the cairn. A sondage excavated through this deposit revealed that it overlay yellowish brown sandy clay, which in turn overlay glacial till.

Illus 4

Cairn 1 [050], vertical rectified photograph

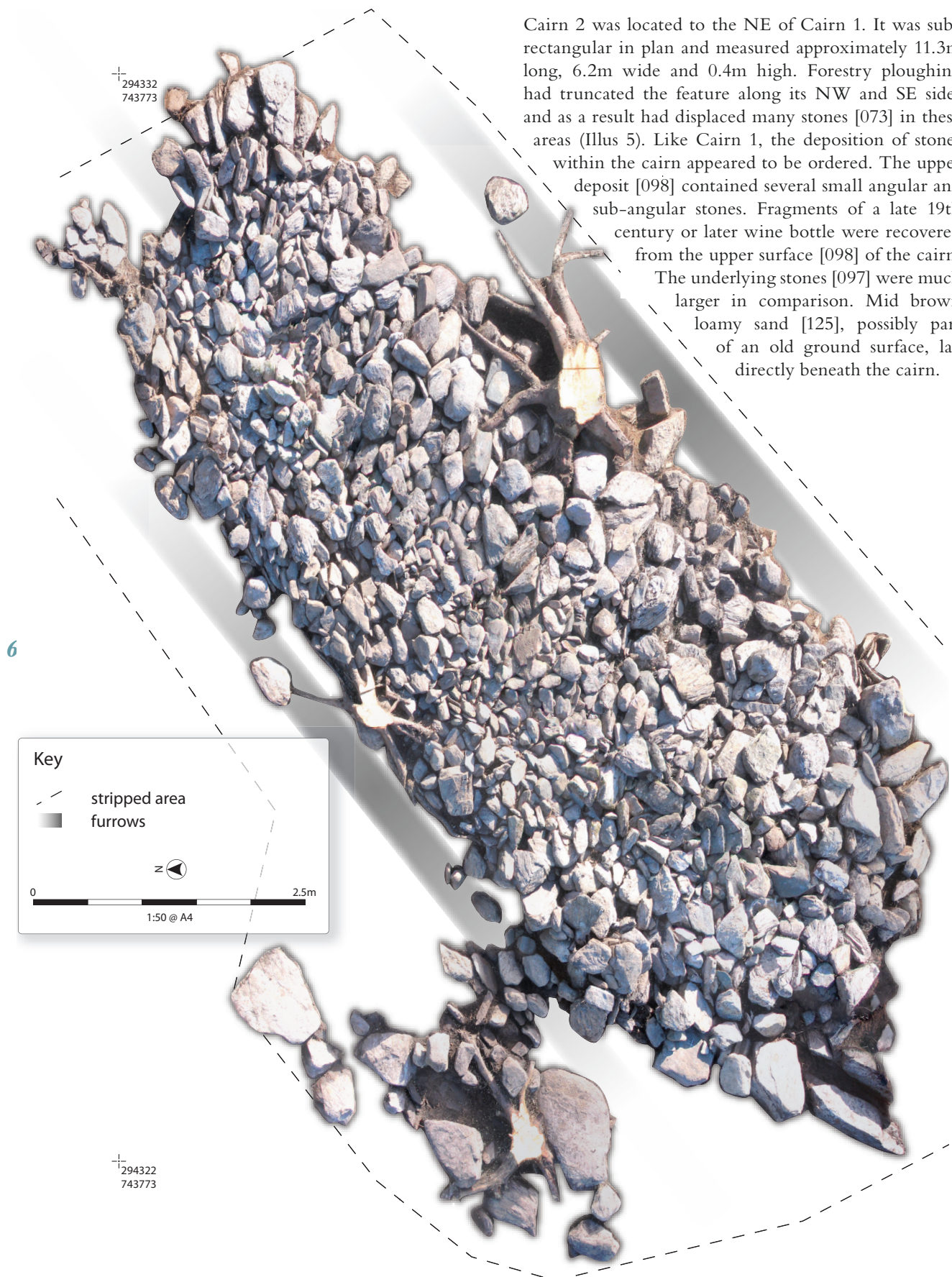




Cairn 2 [053]

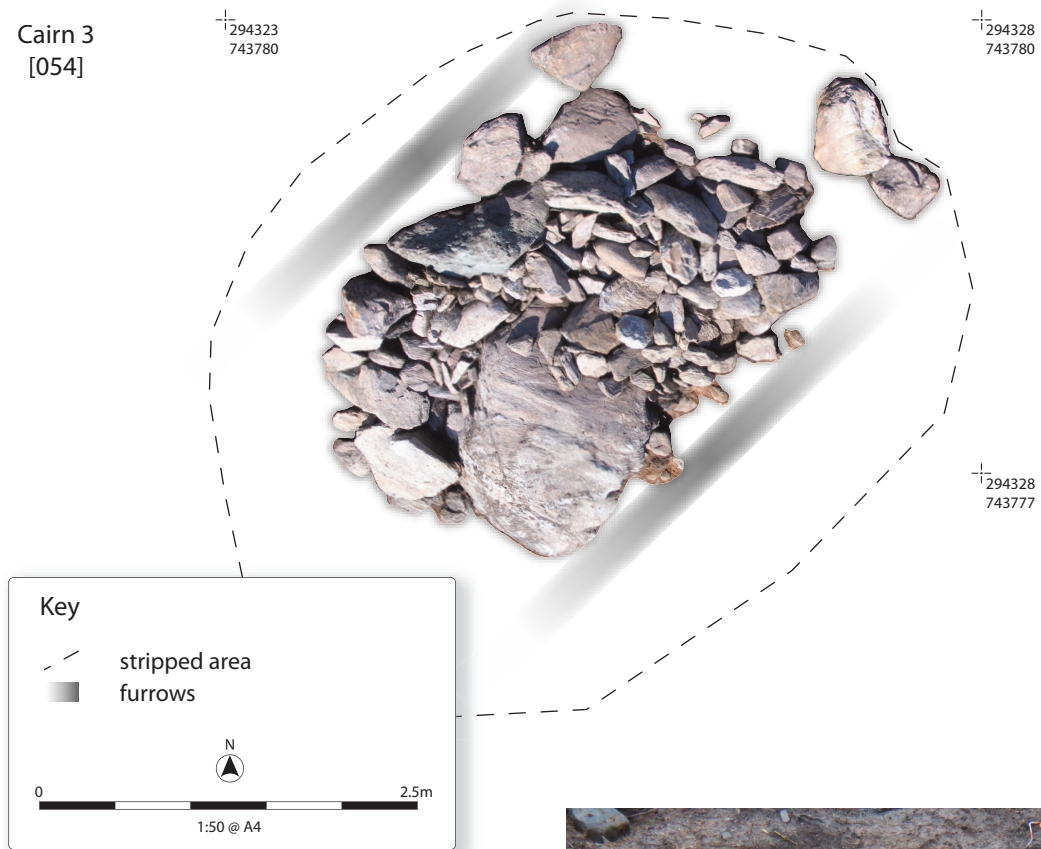
Cairn 2 was located to the NE of Cairn 1. It was sub-rectangular in plan and measured approximately 11.3m long, 6.2m wide and 0.4m high. Forestry ploughing had truncated the feature along its NW and SE sides and as a result had displaced many stones [073] in these areas (Illus 5). Like Cairn 1, the deposition of stones within the cairn appeared to be ordered. The upper deposit [098] contained several small angular and sub-angular stones. Fragments of a late 19th century or later wine bottle were recovered from the upper surface [098] of the cairn.

The underlying stones [097] were much larger in comparison. Mid brown loamy sand [125], possibly part of an old ground surface, lay directly beneath the cairn.



Illus 5

Cairn 2 [053], vertical rectified photograph



Illus 6

Cairn 3 [054], vertical rectified photograph

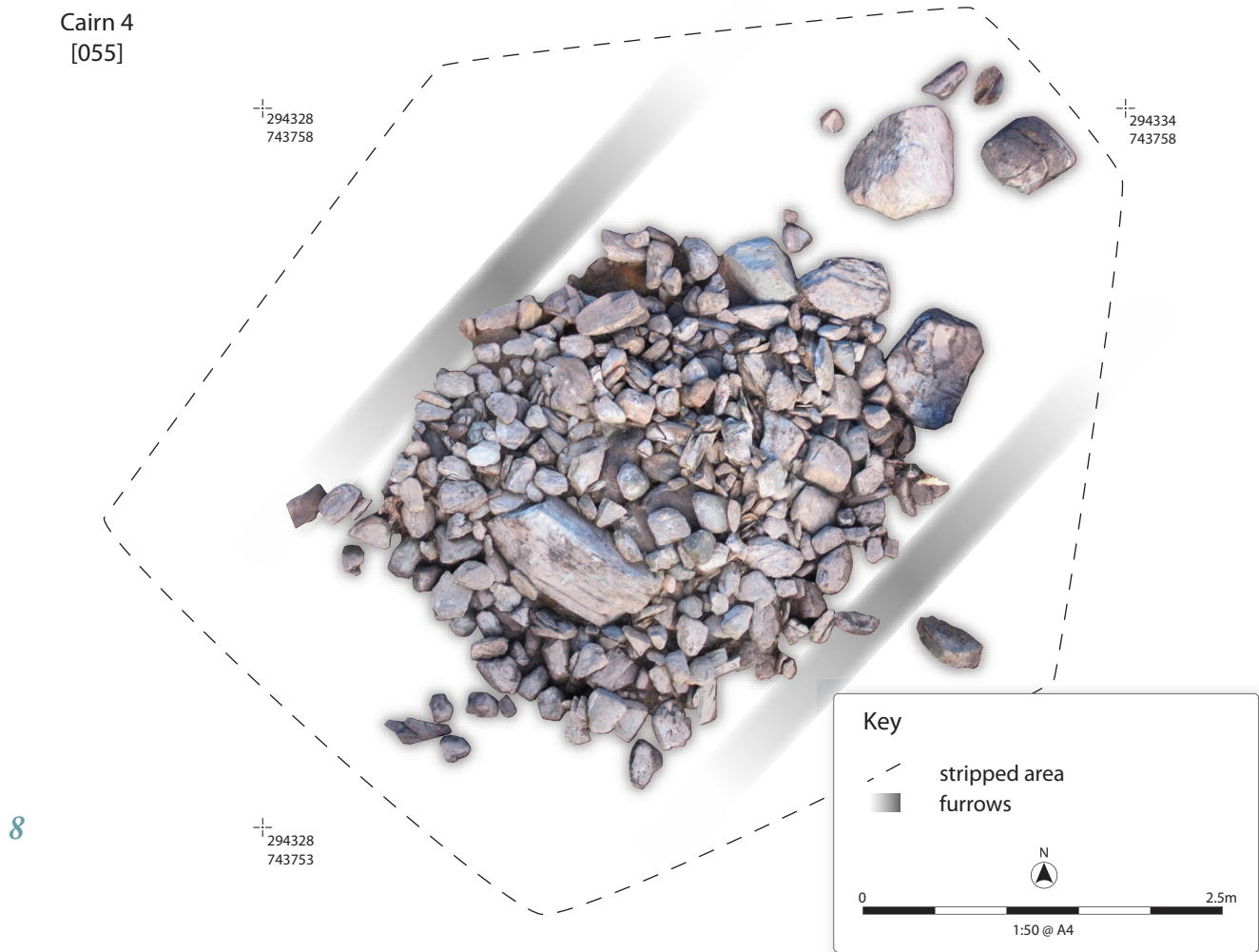


Illus 7

Cairn 3 [054], showing kerb [069], from NW

Cairn 3 [054]

Cairn 3 was the northernmost of the group of cairns. It was sub-circular in plan and measured approximately 4.7m long, 2.6m wide and 0.3m high. Several stones [068] had been displaced by forestry ploughing on the northern and southern sides. The body of the cairn [088] comprised stones of various sizes placed against a large boulder [101] (Illus 6), which formed a central feature of the cairn. A halo of dark organic material had formed around the boulder. This was initially interpreted as a deposit filling a cut, but was latterly found to be caused by mineral washing and freeze thaw weathering processes. A kerb [069] constructed from large, angular stones was located on the south-western side of the feature (Illus 7). Natural reddish brown sandy clay lay beneath the cairn.



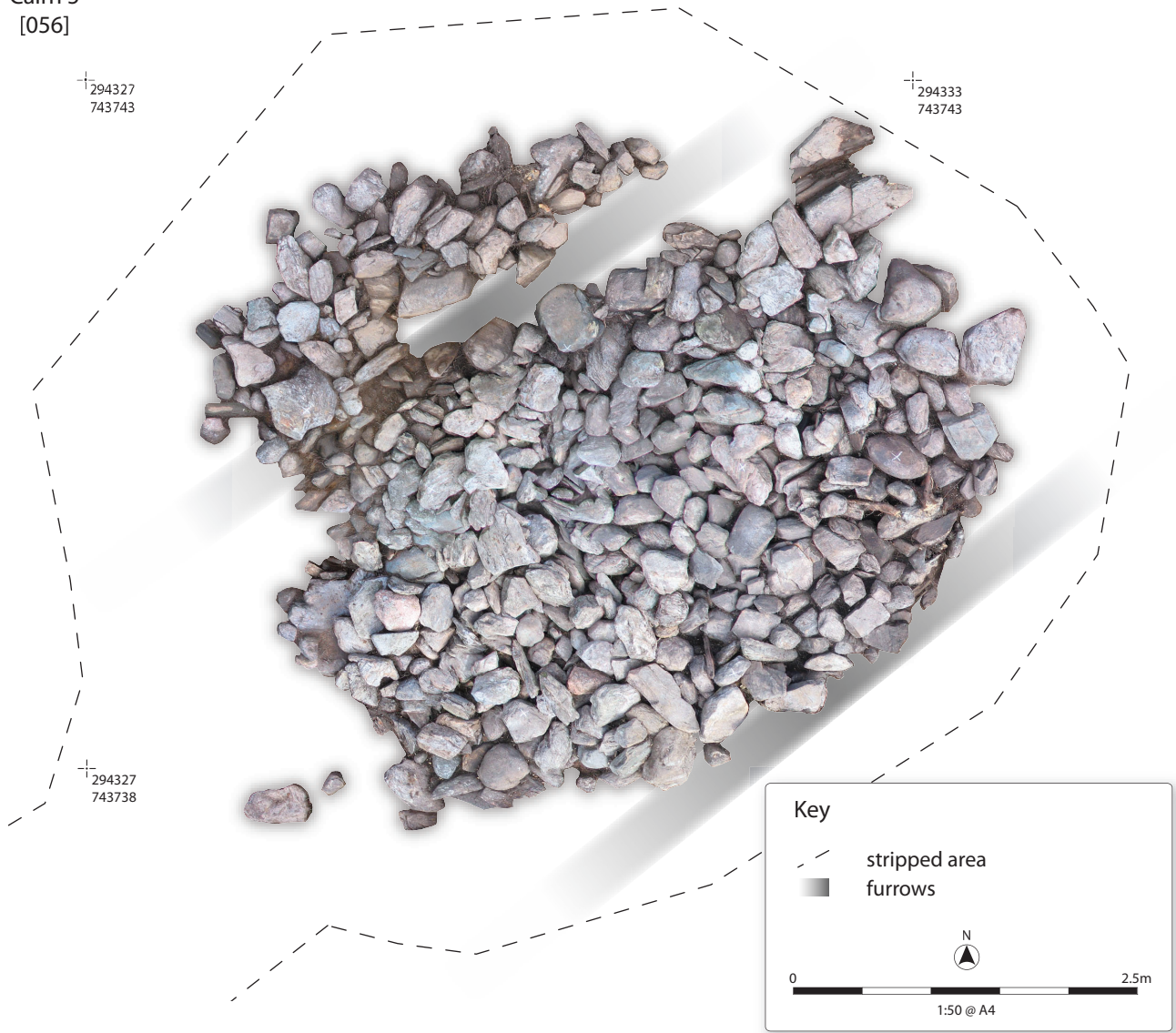
Illus 8

Cairn 4 [055], vertical rectified photograph

Cairn 4 [055]

Cairn 4, sub-rectangular in plan and aligned roughly NE-SW, was 4.4m long, 3.9m wide and 0.3m high. The NW and SE sides of the cairn have been truncated by plough furrows and as a result several stones [066] were displaced in these areas. Three large flat stones [081] and a large boulder [080] were concentrated on the south-western side of the cairn. Medium sized stones [084, 076] (Illus 8) overlay the large stones and these, in turn, were overlain by smaller stones [067], filling the centre of the cairn. Natural subsoil was located directly underneath the cairn.

Cairn 5
[056]



Illus 9

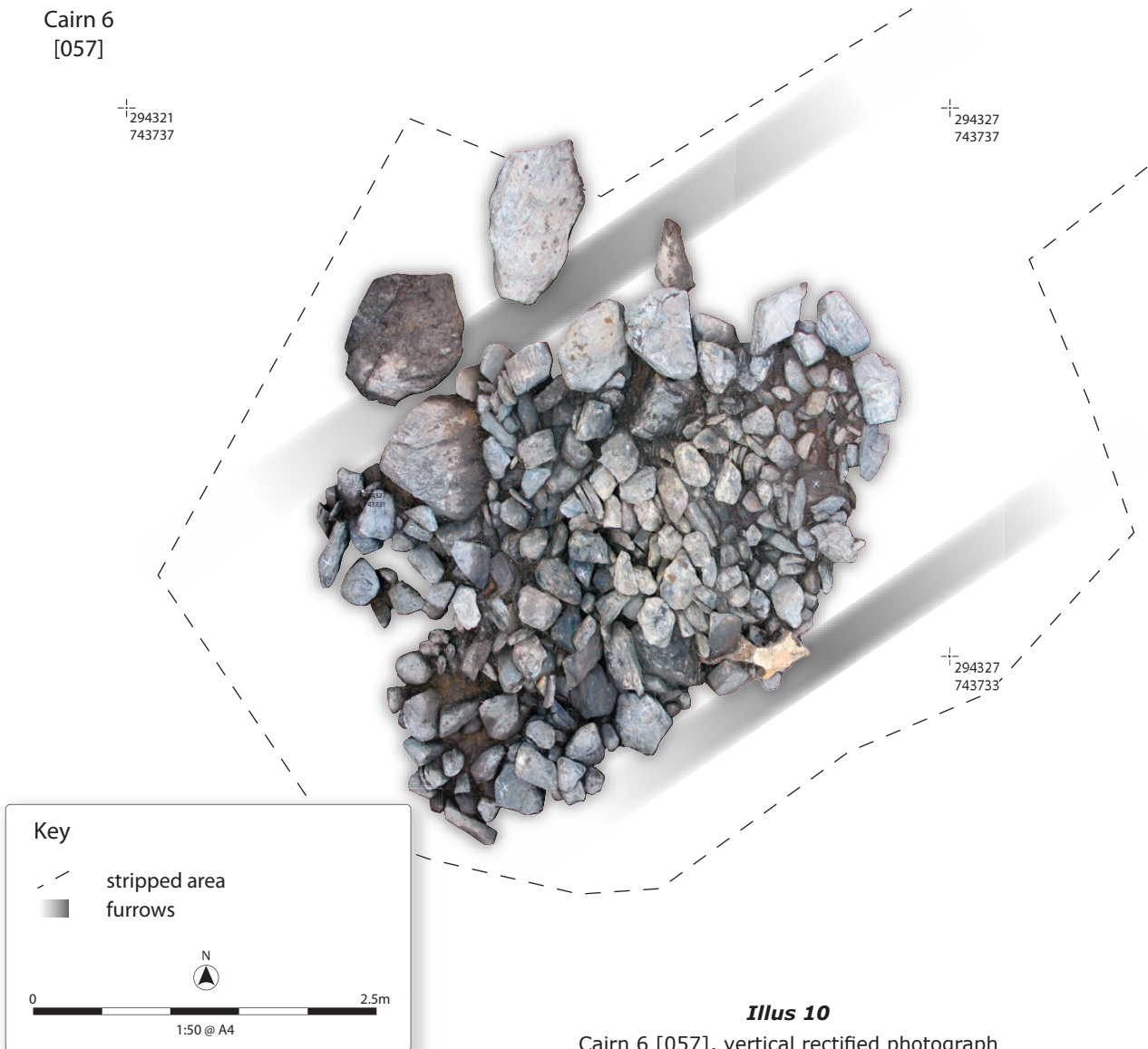
Cairn 5 [056], vertical rectified photograph

Cairn 5 [056]

Cairn 5, sub-rectangular in plan and aligned roughly NE-SW, was 8.4m long, 6.2m wide and 0.4m high (Illus 9). Around its NE end were the remains of a kerb [103] formed of large sub-angular stones. The NW and SE sectors of the cairn have been truncated by plough furrows, resulting in disturbance and displacement of several stones [061 & 091] in these areas. A concentration of large stones [111], positioned vertically and horizontally, was located near the centre of the cairn. These were overlain by dumps of medium sized stones [106, 102]. Interleaved with the layers of stones, and presumably formed by the percolation of organic material between them, were peaty soil deposits [075, 104]. A concentration of small angular stones [074] formed the upper surface of the cairn.



Cairn 6
[057]



10

Illus 10

Cairn 6 [057], vertical rectified photograph

Cairn 6 [057]

Cairn 6 was located to the south-west of Cairn 5. The cairn was 4.8m long, 3m wide and 0.4m high. Although the arrangement of stones was similar to the other cairns, with large stones located at the bottom overlain by medium stones, with smaller stones on top, there appeared to be two phases of kerbing. The outer edge of the cairn was defined by kerb stones [059] (Illus 10). A second stone kerb [070] was located in the centre of the cairn (Illus 11). The inner kerb measured 2.8m in diameter and contained a deposit of medium sized stones [071] overlain by a deposit of slightly larger stones [064].

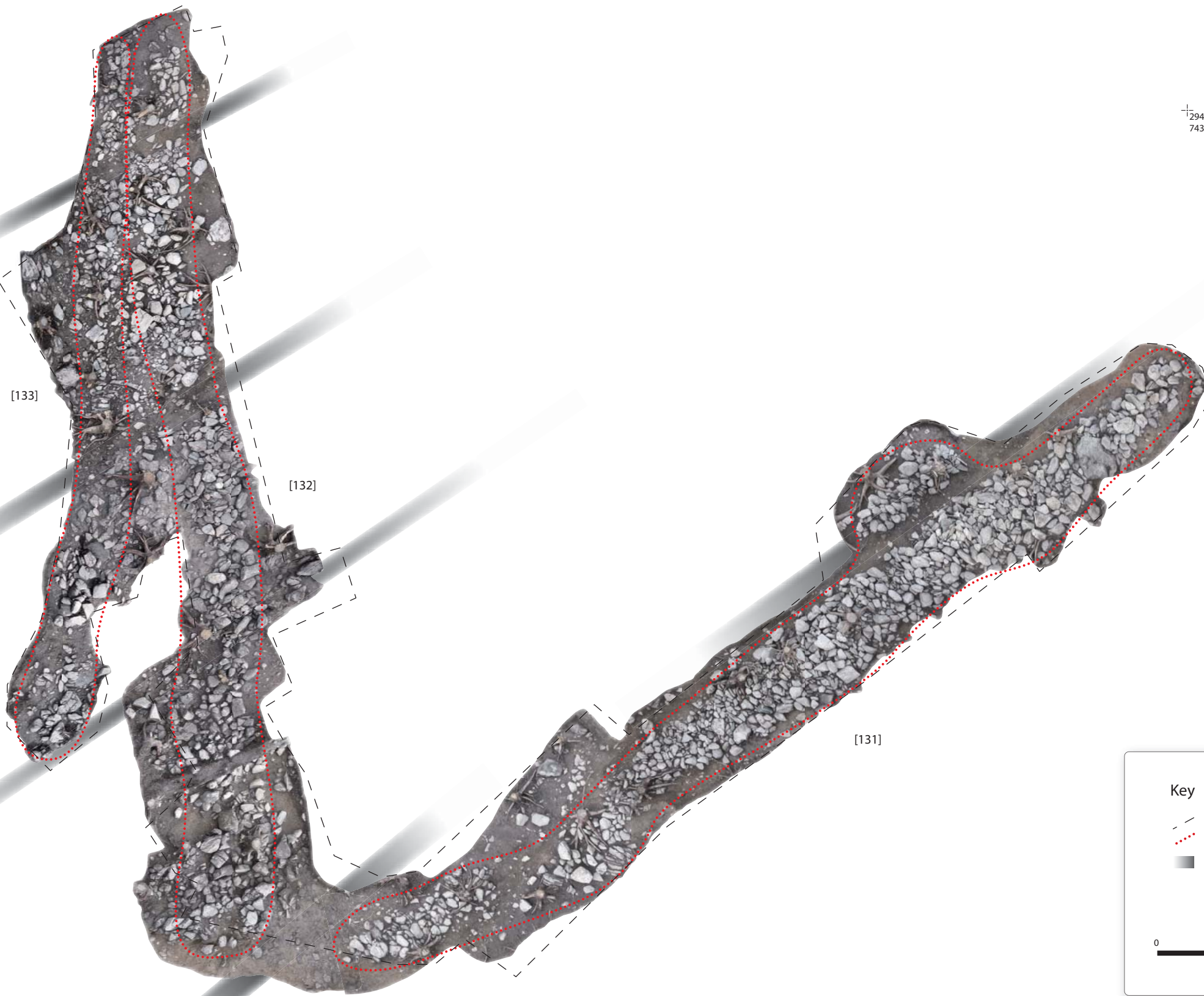


Illus 11

Cairn 6 [057], showing inner kerb [070], from SW

±294310
743820

±294350
743820



[133]

[132]

[131]

±294310
743790

Key

- striped area
- ⋯ outline of bank
- furrows

N

0 10m

1:150 @ A3

Illus 12
Vertical view of stone banks [131], [132] & [133]

**Illus 13**

Oblique view of stone banks [131], [132] & [133] from E

Pit / stone-hole [082]

An amorphous, flat-based, shallow pit or stone-hole [082], 0.49 x 0.29m and 0.03m deep, was identified immediately to the SW of Cairn 6. Several iron objects and a fragment of a copper-alloy object were recovered from the fill [083; 095] of the feature. Although overlain by stones from the adjacent cairn, it is clear that this material has been redeposited, most likely as a result of modern ploughing for forestry planting. The material, therefore, cannot help date the antiquity of the cairn itself.

Stone banks [131], [132] & [133]

Three stone-banks were located in the area to the north of the cairns (Illus 12 & 13). Bank 131 was aligned north-east to south-west and was constructed of large angular stones. It was approximately 35m long, 0.6m high and 1.3–1.4m wide at the south-eastern and north-eastern ends respectively. The central portion of the bank was up to 2.8m wide.

Stone bank 132 was aligned roughly north-south and formed a western arm to Bank 131. It measured up to 0.4m high and was of the same, random construction as Bank 131. Its position at the break of slope had caused it to collapse and spread more than Bank 131, and therefore it was up to 3.4m wide in parts (Illus 13).

Stone bank 133 was located immediately to the west of Bank 132 and was similarly aligned north-south. The

bank was 10m long, 1.2m wide and up to 0.5m high. It converged with Bank 132 near the north-western limit of excavation.

13

6.2 Features uncovered during watching brief at Turbine 38

Cairn 7 [239]

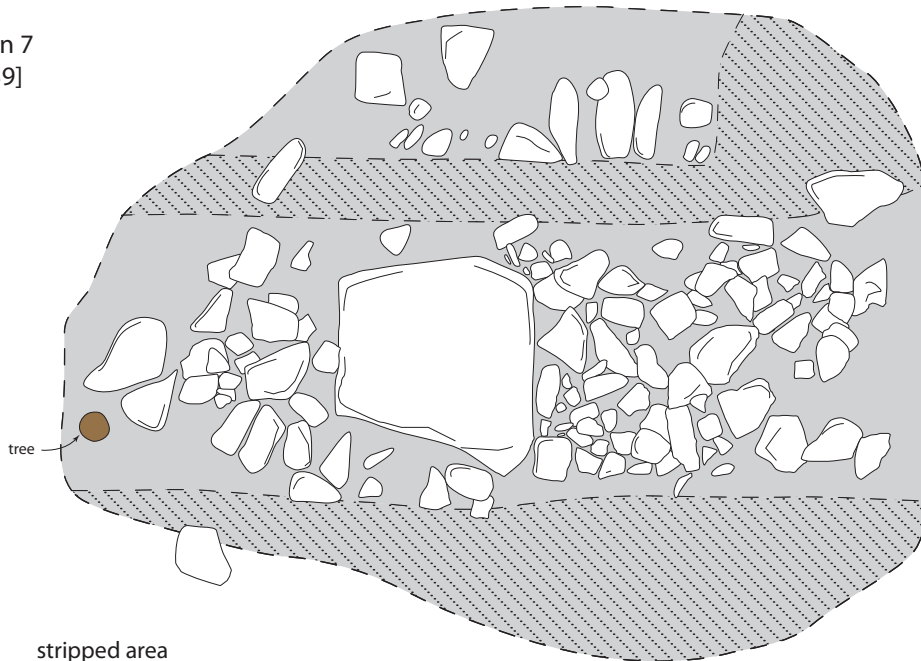
Cairn 7 [239] was uncovered in the area to the south-east of the construction footprint for Turbine 38. It was 5.3m long, 3.2m wide and 0.2m high, and had been truncated to north and south by plough furrows (Illus 14). It comprised a large central boulder, surrounded by sub-angular stones (Illus 15) and directly overlay yellowish brown sandy silt.

Stone bank [238]




A stone bank, aligned roughly NNE-SSW, was identified to the south of Cairn 7 (Illus 16). The bank was 14.3m long, 1.5m wide and up to 0.55m high. Excavation of a section across the stone bank indicated that it was up to three courses high (Illus 17) and was constructed of large angular stones.

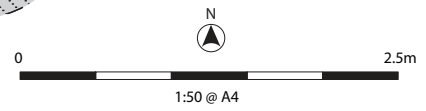


Cairn 7
[239]



Key

-  stripped area
-  stones
-  truncated / disturbance



Illus 14
Plan of Cairn 7 [239]

14



Illus 15
Cairn 7 [239], ground view, from the E

7. RESULTS OF PALAEO-ENVIRONMENTAL ASSESSMENT

Sarah-Jane Haston

7.1 Introduction

Four samples were taken for palaeoenvironmental analysis from deposits beneath Cairn 2 [125] and Cairn 3 [107], within Cairn 4 [113] and from the fill [083] of pit [082]. The aim of the assessment was to establish the palaeoenvironmental potential of the material and what evidence this material is showing us for the activities which once took place at the site.

7.2 Method

Samples were processed in laboratory conditions using a standard flotation method (*cf.* Kenward *et al.*, 1980). All plant macrofossil samples were analysed using a stereo-microscope at magnifications of x 10 and up to x 100 where necessary to aid identification.

7.3 Results

The results of the sample processing are provided in Appendix 2 (Retent sample results and Flotation sample results). Suitable material for AMS dating is also identified in the tables.

7.4 Plant remains

The concentration of charred plant remains was low with all samples found to contain rare to occasional amounts of charcoal fragments and abundant modern root/stems (see Appendix 2). The larger sized fragments (between 1 and 3cm) are suggestive of in-situ burning or deliberately dumped fire debris. Charcoal fragments were observed by eye to be of non-oak species. The smaller sizes of the fragments suggest that they may have been become incorporated in the sampled deposits by mechanisms such as windblow and surface run-off.

7.5 Plant material available for AMS

Material identified as suitable for dating is shown in Appendix 2. The sample [009] from Cairn 2 [125] contained fragments of charcoal

of a suitable size and condition for Accelerated Mass Spectrometry (AMS) dating. If charcoal was selected for dating, identification of species of wood represented would be required prior to dating.

7.6 Discussion

The concentration of archaeological remains recovered from the samples was very low with most samples only containing a small quantity of wood charcoal.

7.7 Recommendations

The charcoal fragments recovered from Cairn 2 are of a suitable size to obtain radiocarbon dating evidence for the site. If charcoal was selected, identification of the species would be undertaken and would provide information on fuel sources used. Therefore it is recommended that some material be made available for radiocarbon dating to assign an age for the stone clearance activities.



Illus 16

Stone bank [238], from the E



Illus 17

E facing section through stone bank [238]

16 8. FINDS ASSESSMENT

Julie Franklin

8.1 Introduction

The majority of finds were recovered from or in the immediate vicinity of Cairn 6. The assemblage was small, numbering 35 iron objects, 13 sherds of bottle glass, one copper alloy find and one of lead (Appendix 3). Few of the finds were closely datable, but those that were suggest a 19th or 20th century date.

8.2 Assemblage summary

Metalwork

The ironwork was in very poor condition, covered in voluminous corrosion products. X-radiography analysis was undertaken to identify these objects to establish if they could help in the dating of the deposits from which they were recovered.

A few of the finds could be identified as nails. One large find appeared to be part of a heavy duty chain, of the kind used to secure a gate. Others were unidentifiable lumps

and fragments, although their size and weight suggest a recent origin is the more likely. The copper alloy find is similarly of uncertain function, but of probable modern date. It may be part of a container or piece of machinery. The lead find is a large lump, possibly intended for use as caulking, though unused. The majority of the metalwork was found in a possible pit or stone-hole [082] to the south-west of Cairn 6. It seems likely that this is a dump of material relating to recent agricultural activity in the area and implies the pit is of 19th or 20th century origin. This is not inconsistent with its subsequent burial with redeposited cairn material as a result of modern forestry ploughing.

Glass

Glass sherds all derive from the same green bottle, probably a wine bottle. The shape of the base and the embossed lettering on the underside indicate a date no earlier than the late 19th century. The fragments were recovered from the layer of stones [098] that formed the upper part of Cairn 2. The fragments do not, however, help to date the construction of the cairn.

9. DISCUSSION

The abundance of cairns suggests that intensive agricultural activity was occurring in the area. The cairns are likely to be the result of loose bedrock and stones

cleared from the soil in order to prepare and improve the land for cultivation and pasture. The proximity of the cairns to one another suggests that the land was cleared by spade cultivation.

Although the shape and size of the clearance cairns varied greatly, the arrangement of stones within them remained constant, with large stones on the bottom, medium sized stones in the centre and small stones on the surface. Three of the cairns were kerbed on their western, down-slope side, in order to contain the cairn material and prevent it from encroaching onto the cleared ground. The size of the stones within the cairns and the evidence for their sorting implies that they are the result of initial land clearance. The unstructured nature of the stone banks suggests that they may also have been formed from field clearance as they did not appear to be collapsed stone dykes, or form any sort of barrier. Examples of linear clearance cairns have been recorded elsewhere.

Johnston (2001) expresses concern that cairnfields, built as a consequence of agricultural activity, are often disregarded and recorded as informal and unstructured in comparison with other upland features, such as burial mounds.

However, excavation evidence shows that clearance cairn structure often includes elements of careful construction similar to burial monuments. Evidence for the deliberate deposition of charred material and artefacts have also been found within clearance cairns.

The majority of finds recovered during the excavation were from a possible pit or stone-hole located to the south-west of Cairn 6 and were dated to the 19th or 20th century, providing evidence for recent activity in the area. Meanwhile, fragments of a late 19th century or

later wine bottle were recovered from the upper surface of Cairn 2.

None of the artefacts recovered provide dating evidence for the construction or period of use of the cairns. Clearly, the cairns are of some antiquity as the underlying soil profile was relatively well developed and the features were stable, solid and partially covered with moss or pine-litter. With the exception of the modern forestry plough furrows, the cairns are also relatively well-preserved. Radiocarbon-dating of charcoal from a possible buried ground surface [125] below Cairn 2 may help clarify the age of these structures.

10. REFERENCES

- Dalland, M, 2011, in prep. *Griffin Wind Farm, Perth & Kinross: archaeological survey, excavation and monitoring works at and in the vicinity of Turbine 26*, Headland Archaeology Ltd. Unpublished Report.
- Johnston, R, 2001, 'Breaking new ground: land tenure and fieldstone clearance during the Bronze Age', in Brück, J, (ed), *Bronze Age Landscapes Tradition and Transformation*, Oxbow Books.
- Kenward, HK, Hall, AR & Jones, AKG, 1980, 'A tested set of techniques for the extraction of plant and animal macrofossils from waterlogged archaeological deposits', *Science and Archaeology* 22, 3–15.
- Scott, L, 2010, *Griffin Wind Farm, Perth & Kinross. Report on Post-Felling Walkover Survey*. Headland Archaeology Ltd, Unpublished Report.
- Scott, L, 2011, *Griffin Wind Farm, Perth & Kinross. Written Scheme of Investigation for archaeological excavation of six square cairns identified during the walk-over survey*. Headland Archaeology Ltd, Unpublished Report.



APPENDICES

Appendix 1 – Site register

Context register

Context no.	Description
050	Cairn 1. The cairn was 8.1m long, 7.8m wide and 0.45m high and formed of angular and sub-rounded schistous and quartz stones with sides up to 0.85 x 0.45 x 0.25m. Many of the stones had been disturbed due to later ploughing activity. Large boulders were concentrated on the south side of the cairn and several stones were piled against them.
051	Dark brown, peaty topsoil, 0.08 – 0.12m deep.
052	Moderately stony, sandy clay. Glacial till.
053	Cairn 2. Cairn 2. Aligned NE-SW, the cairn is 11.3m long, 6.2m wide and 0.4m high. Sub-rectangular/ L-shaped cairn located 4m to the NE of Cairn 1. Part of the cairn protruded at its downslope end to form an inverted L-shape. Furrows truncated the feature on the SE and NW sides. Several displaced stones [073] were located on the NW and SE edges of the cairn, the result of ploughing.
054	Cairn 3. Sub-circular on plan and roughly 4.7 x 2.6m and 0.3m high, Cairn 3 was constructed of angular and sub-angular quartz and schistous stones. It consisted of several large stones on the south side with smaller stones around them. There appears to be a kerb [069] of large angular stones on the western side of the feature. Several loose stones [068] were located on the SE side of the feature (upcast from ploughing) and some were displaced by tree roots to the north.
055	Cairn 4. Sub-rectangular on plan and composed of angular and sub-angular schistous and quartz stones, is roughly 4.4 x 3.9m and 0.3m high. Three large flat stones [081] were visible in the centre of the feature, with a large edge-set boulder [080] adjacent. Kerbing, formed by medium-sized stones set on edge, was located around the north side of the cairn. The feature has been truncated along its SE and NW sides by plough furrows.
056	Cairn 5. Sub-rectangular on plan and aligned NE-SW, the cairn was 8.4 x 6.2m and 0.40 m high. It was truncated by plough furrows in the area to the NW of its centre and, again, along its SE edge. Several smaller stones appear to be piled against larger rocks. Several stones (probably plough drag) lay between this cairn and Cairn 6.
057	Cairn 6. The cairn was 4.8m long, 3.m wide and 0.4m high, formed of medium - large angular and sub-angular stones. Several stones were displaced by ploughing on the NW and SE sides. Kerb stones were located around the NE and SW sides.
058	Displaced stones of Cairn 6 [057], due to disturbance by furrows to the NW and SE. Stones vary in size from small (0.1 x 0.1 x 0.1m) to medium (0.2 x 0.3 x 0.1m).
059	Kerb stones from Cairn 6. Stones are aligned in a way that suggests deliberate placement. Kerb stones vary in size from medium to large (0.4 x 0.3 x 0.2m to 0.65 x 0.5 x 0.2m). The stones were most visible on the north-eastern extent of the cairn although some were also visible on the western edge.
060	Displaced stones located between Cairns 5 and 6. Likely to be disturbance caused by furrows running roughly NE-SW to the north and south of the cairns.
061	Displaced stones surrounding Cairn 5. Likely to be the result of disturbance due to furrows running to the SE and across the NW sector of Cairn 5. Stones vary in size from small (0.1 x 0.1 x 0.1m) to large boulders (1 x 0.7 x 0.5m).
062	Kerb stones of Cairn 6 [057], located around the NE and SW sides of the cairn.
063	Layer of small stones, forming the upper deposit of Cairn 6. Stones vary in size from small 0.05 x 0.05 x 0.05 m to medium 0.2 x 0.3 x 0.1m. The deposit extends over an area roughly 4.6 x 2.3m.
064	Layer of substantial medium-sized stones and large boulders, located within kerb stones on the outer extent of Cairn 6. Located beneath deposit 063 and above deposit 071. The stones are significantly smaller and less compact than the overlying deposit. Stones vary in size from medium 0.4 x 0.3 x 0.2 m to large 0.6 x 0.5 x 0.4m.
065	Dark brownish black, loose silty pockets of soil between the stones in Cairn 6. Overlies stone layers 063 and 064 and contains abundant roots; small iron objects (SF 002–009, 011 & 012) were present in this deposit at the south-western extent of the cairn.
066	Stones located around the NE and SW ends of Cairn 4. Represents the stones disturbed by ploughing and tree roots on the western side of the cairn. Stones in this area overlie pine cones, pine litter and a relatively loose, rooty deposit.
067	Deposit of small (0.25 x 0.12 x 0.09m and 0.16 x 0.08 x 0.05m) stones concentrated in the central area of Cairn 4. Overlies deposit of larger stones [076 & 084].
068	Schist and quartz stones located on the south side of Cairn 3 – displaced by plough furrows and disturbed by tree roots. Stones varied in size, with the smallest measuring 0.22 x 0.13 x 0.05m and largest measuring 0.42 x 0.32 x 0.1m. The stones overlay pine litter.
069	Kerb stones located on the northern edge of Cairn 3. They consisted of several large stones measuring 1 x 0.4 x 0.25m and 0.55 x 0.3 x 0.08m. Stones comprised schists with quartz seams. No kerbs were apparent on the south side; however, it is likely that any originally present would have been disturbed during forestry ploughing.



Context no. Description

070	Kerb stones located in Cairn 6: inner ring of kerb stones measuring approximately 2.8m in diameter. The kerb is composed of several large stones generally measuring 0.6 x 0.5 x 0.3m.
071	Deposit of stones within inner area of Cairn 6. Very similar to [064] and is comprised of medium-sized stones generally measuring 0.4 x 0.3 x 0.2m.
072	Displaced stones surrounding Cairn 1. Stones are displaced at northern and southern extents due to plough furrows.
073	Deposit of displaced stones in Cairn 2. The majority of stones surround the exterior of the cairn, primarily on the north and east sides. Stones vary in size from 0.35 x 0.3 x 0.05m to 0.24 x 0.21 x 0.14m.
074	Deposit of stones comprising several medium and angular quartz and schist stones in Cairn 5. The deposit overlies pine litter, cones and peat (075).
075	Peaty soil deposit 0.02 – 0.06 m thick. Underlies [074] in Cairn 5. This may be the original vegetation covering Cairn 5 prior to ploughing and forestry.
076	Deposit of medium and large stones, 0.12 – 0.8m thick, located in the centre of Cairn 4.
077	Peat deposit located in Cairn 4. Underlies [076] in central area of cairn. Concentrated in central area of cairn. It is possible that this may have been the original vegetation covering Cairn 4 prior to ploughing and forestry plantation.
078	Lower deposit of stones within inner kerb of stones in Cairn 6. Contains medium sized stones measuring 0.5 x 0.3 x 0.2m.
079	Brownish orange loose silty clay deposit located within the inner kerb of Cairn 6, beneath deposit [071]. Contains abundant roots and stones and extends over an area 1.9 x 1.6m and 0.18m thick. Upper horizon of podsol.
080	Large stone 1.4m long and 0.57m wide, situated at the south-western end of Cairn 4. It is aligned NW to SE and has several small stones piled against it.
081	Three large stones located in the centre of Cairn 4. The stones are angular and medium to large in size. They are situated immediately NE of (080). The stones all run parallel to one another on a roughly SW to NE alignment.
082	Possible cut for an irregular shaped pit or stone-hole located 0.60m west of the inner kerb of Cairn 6. Filled with [083], the feature was very shallow and its base was very flat.
083	Fill of pit or stone-hole [082]. Contains disintegrated soft stone and several fragments of heavily corroded iron (SF 013) and a fragment of copper alloy (SF 014). Same as context 095 below.
20 084	Concentration of sub-rounded and angular stones, with sides 0.1 – 0.3m long. . The stones are packed vertically against the edge of stone [080] on the south-west side of Cairn 4.
085	Deposit of sub-rounded and angular medium sized stones located on the western edge of Cairn 4.
086	Small to medium and sub-angular stones situated to the southwest of [080] in Cairn 4. The stones appear to form a distinct edge on the south-west side of the cairn.
087	Layer of stones in Cairn 6 beneath what appear to be inner kerb stones.
088	Upper stone, schist and quartz deposit located in Cairn 3.
089	Thin deposit of organic peaty soil beneath (088), located in centre of Cairn 3. It varies in thickness between the stones and envelopes and covers the stones in the centre of the cairn.
090	Lower layer of stones in Cairn 3 embedded in deposits 107 and 109 where they appear on the surface. Kerb stones (069) overlie some of these stones in the north-east and north.
091	Primary cairn material, Cairn 5, displaced by tree roots and forestry ploughing.
092	Upper deposit of small sub-rounded and sub-angular stones covering the centre of Cairn 1.
093	Originally interpreted as a cut, but following excavation it became apparent that the discolouration related to the podsolization process.
094	Dark greyish brown silty sand containing abundant roots and medium sized stones in Cairn 6. Upper horizon of podsol. Same as (099).
095	Fill of pit or stone-hole (same as 083). Dark orange brown silt deposit located to the south-west of Cairn 6 and containing several iron objects (SF 017 – 020).
096	Stone deposit located in Cairn 1, beneath [092]. It was located directly beneath a deposit of smaller, loose stones. The stones were set into a loose, peaty, black silty sand [096], heavily disturbed by roots.
097	Cairn 2. Deposit of stones set into peat found beneath loose stone deposit [098] (same as deposit 116 and 124).
098	Stone deposit from Cairn 2. Several glass bottle fragments (SF 022) were recovered from this deposit.
099	Dark brownish orange silt deposit under inner kerb stone in Cairn 6.
100	Mixed brownish orange silt. Gleyed horizon from podsol profile.

Context no.	Description
101	Large schist boulder, with sides 2. x 1.15 x 0.6m long, with white quartz seams, forming central feature of Cairn 3. Freeze-thaw processes around the stone have created a halo of dark brown and grey sandy clay silt, and some medium sized stones have also slid into gaps created, Glacial erratic forming centre of Cairn 3.
102	Medium to large stones located in Cairn 5, underlying peat deposit (075).
103	Cairn 5. Kerb stones located on the north side of the cairn, to the north and west of [102]. The stones appear to be angled towards the body of the cairn and most stones are positioned lengthwise on a broadly north-south alignment.
104	Peat deposit located in Cairn 5, underlying medium to large stones [102].
105	Silty loam, underlying a layer of medium stones [106] in Cairn 5.
106	Medium stones located beneath peat deposit (104) in Cairn 5.
107	Dark brown organic deposit formed around stones (090), including large glacial boulder, in Cairn 3, overlies grey sandy silt (108).
108	Grey sandy clay/silt deposit found between dark brown A horizon and orange B horizon. Varies in depth and in Cairn 3 stones (090) sit on it.
109	context number not used
110	B-horizon of podsol.
111	Concentration of vertical and horizontal slabs in the centre of Cairn 5.
112	Dark brown silt deposit that had accumulated around [111] in Cairn 5.
113	Mixed mid brownish grey loam deposit, located in Cairn 4. Podsol subject to freeze thaw weathering processes, creating mixed deposit.
114	Mid grey, silty clay deposit overlying (115) in Cairn 4. Leached podsol horizon.
115	Loamy sand underlying 114 in Cairn 4.
116	Same as [097] and [124]
117	Greyish brown, sandy silt deposit located within Cairn 5. Redeposited topsoil, thrown up by forestry ploughing.
118	Large stone slab found near the centre of Cairn 5. Glacial erratic.
119	Deposit of medium to large stones located below stone layer 096 in Cairn 1.
120	Dark greyish brown silt deposit located at the south-western extent of Cairn 1. Possibly reduction/ leached horizon in podsol.
121	Light brownish grey deposit located to the south-west of Cairn 1.
122	Same as 120.
123	context number not used
124	Same as deposit [097] and [116].
125	Mid brown loamy sand, with evidence of podsolisation. Located beneath Cairn 2. Possibly part of old ground surface. Part of podsolisation process.
126	Brownish orange silty deposit located beneath Cairn 1.
127	Mid orange sandy loam underlying Cairn 2. Site-wide natural B horizon.
128	Rock-worn scar in subsoil.
129	Pale grey sandy silt observed under orange sandy silty loam below Cairns 1, 2 and 3. Sloping and undulating surface. Natural subsoil, C-horizon.
130	Orange sandy clay silt with a very small grain. Glacial till.
131	Drystone bank aligned NE-SW, 3.5m long, 1.3 – 2.8m wide and 0.60m high, and constructed with randomly deposited angular stones of various sizes. The bank narrows at its north-east end, to 1.4m, and at the south end, to 1.3m. The bank is more substantial in its central portion where it is up to 2.8m across.
132	Stone bank, aligned NW-SE, and of same construction as [131]. Up to 3.4m wide and 0.4m high.
133	Possible short stone bank to the west of [132] aligned N-S. It comprises a poorly defined concentration of stone, heavily truncated by plough furrows. It converges with bank [132] near the north western limit of excavation. Same construction as 131 and 132.
134	Dark brown slightly sandy silt deposit located beneath topsoil to the east of stony bank [132] and permeating the interstices between the stones. Interpreted as hillwash.



Context no. Description

135	Natural brownish orange silty sand and gravel.
238	Stone bank constructed of large angular stones, aligned NNE-SSW, located to the south of Cairn 7. The bank was 14.3m long, 1.5m wide and up to 0.55m high. Excavation of a section across the stone bank indicated that it was up to three courses high.
239	Cairn 7: Sub-rectangular on plan. It was 5.3m long, 3.2m wide and 0.2m high, and had been truncated to the north and south by plough furrows. It comprised a large central boulder, surrounded by sub-angular stones.

Drawing register

Drawing no. Section Description

17	1:10	South facing section of Cairn 5
18	1:10	West facing section of slot through Cairn 5
19	1:10	West facing section under Cairn 3 and [101]
20	1:10	SE facing section under Cairn 4 (2 parts)
21	1:10	SW facing section of Kubiena tin location in Cairn 4
22	1:10	E facing section showing location of Kubiena tins in Cairn 1
23	1:10	SE facing section through wall (132)
24	1:10	W facing sondage through Cairn 1

Photo register

22

Picture no. B&W print Digital file name Facing Description

1	x	GWPK09-Job009-01	E	Pre-excavation shot of Cairn 1 (A1)
2	x	GWPK09-Job009-02	E	General shot of Cairn 1(A1), covered in snow
3	x	GWPK09-Job009-03	N	Cairn 1 (A1) – working shot
4	x	GWPK09-Job009-04	E	Structure A7
5	x	GWPK09-Job009-05	W	Working shot
6	x	GWPK09-Job009-06	N	Cleaning attempt in snow
7	x	GWPK09-Job009-07	N	Cairn 2 in snow
8	x	GWPK09-Job009-08	NE	Working shot of Cairn 5 - South-western slot
9	x	GWPK09-Job009-09	S	Working shot of Cairn 6 - North-eastern slot
10	x	GWPK09-Job009-10	NE	Pre-ex of Cairn 4
11	x	GWPK09-Job009-11	N	Pre-ex of Cairn 4
12	x	GWPK09-Job009-12	W	Pre-ex of Cairn 4
13	x	GWPK09-Job009-13	S	Pre-ex of Cairn 4
14	x	GWPK09-Job009-14	E	Pre-ex of Cairn 4
15	x	GWPK09-Job009-15	NE	General pre-ex of Cairn 3
16	x	GWPK09-Job009-16	NE	General pre-ex of Cairn 3
17	x	GWPK09-Job009-17	W	General pre-ex of Cairn 3
18	x	GWPK09-Job009-18	N	Cairn 6, pre-ex following cleaning
19	x	GWPK09-Job009-19	N	Cairn 6, pre-ex following cleaning

Picture no.	B&W print	Digital file name	Facing	Description
20	x	GWPK09-Job009-20	N	Cairns 5 and 6
21	x	GWPK09-Job009-21	N	Cairn 1, pre-ex general
22	x	GWPK09-Job009-22	NW	Cairn 1, pre-ex general
23	x	GWPK09-Job009-23	S	Cairn 1, pre-ex general
24	x	GWPK09-Job009-24	SE	Cairn 1, pre-ex general
25	x	GWPK09-Job009-25	E	Cairn 1, pre-ex general
26	x	GWPK09-Job009-26	NE	Cairn 1, pre-ex general
27	x	GWPK09-Job009-27	N	Cairn 1, pre-ex general
28	x	GWPK09-Job009-28	S	Cairn 2 pre-ex
29	x	GWPK09-Job009-29	S	Cairn 2 pre-ex
30	x	GWPK09-Job009-30	S	Cairn 2 detail NW side
31	x	GWPK09-Job009-31	N	Cairn 2 pre-ex
32	x	GWPK09-Job009-32	E	Cairn 2 detail of W side
33	x	GWPK09-Job009-33	SW	Cairn 2 pre-ex
34	x	GWPK09-Job009-34	NNW	Cairn 2 pre-ex
35	x	GWPK09- Job009-35	NW	Cairn 2 pre-ex
36	x	GWPK09-Job009-36	NE	Cairn 2 general shot
37	x	GWPK09-Job009-37	N	Cairn 6 working shot
38	x	GWPK09-Job009-38	SE	Cairn 1-working shot- SW Slot
39	x	GWPK09-Job009-39	NW	Cairn 1-working shot- SE Slot
40	x	GWPK09-Job009-40	SW	Cairn 1 – working shot- NE Slot
41	x	GWPK09-Job009-41	SE	Cairn 1 – working shot – NW Slot
42	x	GWPK09-Job009-42	NE	Cairn 2- working shot- SW Slot
43	x	GWPK09-Job009-43	NNW	Cairn 2- working shot- SE Slot
44	x	GWPK09-Job009-44	W	Cairn 2- working shot- NE Slot
45	x	GWPK09-Job009-45	SE	Cairn 2 - working shot- NW Slot
46	x	GWPK09-Job009-46	NE	Cairn 3- working shot-SW Slot
47	x	GWPK09-Job009-47	SE	Cairn 3- working shot- NW Slot
48	x	GWPK09-Job009-48	NE	Cairn 4- working shot – SW slot
49	x	GWPK09-Job009-49	NW	Cairn 4- working shot- SE slot
50	x	GWPK09-Job009-50	SW	Cairn 4- working shot- NE slot
51	x	GWPK09-Job009-51	SE	Cairn 4 –working shot- NW slot
52	x	GWPK09-Job009-52	NW	Cairn 5- working shot- SE slot
53	x	GWPK09-Job009-53	SW	Cairn 5- working shot- NE slot
54	x	GWPK09-Job009-54	SE	Cairn 5- working shot- NW slot
55	x	GWPK09-Job009-55	NE	Cairn 6- working shot- SW slot
56	x	GWPK09-Job009-56	NW	Cairn 6- working shot- SE slot
57	x	GWPK09-Job009-57	SE	Cairn 6- working shot- NW slot
58	x	GWPK09-Job009-58	NE	Cairn 6, [064]
59	x	GWPK09-Job009-59	S	Cairn 6 [064] showing possible kerb stones
60	x	GWPK09-Job009-60	S	Void



Picture no.	B&W print	Digital file name	Facing	Description
61	x	GWPK09-Job009-61	NE	Cairn 5
62	x	GWPK09-Job009-62	NW	Cairn 6- General shot
63	x	GWPK09-Job009-63	NE	Cairn 4- pre ex with tumble removed
64	x	GWPK09-Job009-64	SSW	Cairn 6- general shot of partially excavated cairn
65	x	GWPK09-Job009-65	N	Cairn 6- general shot of partially excavated cairn
66	x	GWPK09-Job009-66	NE	Cairn 6 [071]
67	x	GWPK09-Job009-67	NE	Cairn 6 [071]
68	x	GWPK09-Job009-68	NE	Cairn 5-working shot
69	x	GWPK09-Job009-69	NE	Cairn 5- working shot
70	x	GWPK09-Job009-70	N	Cairn 5- working shot showing diamond shaped stone
71	x	GWPK09-Job009-71	NE	Cairn 6- half section showing [075]
72	x	GWPK09-Job009-72	NW	Cairn 4 – half section
73	x	GWPK09-Job009-73	NE	Cairn 6- showing stone layer [078]
74	x	GWPK09-Job009-74	NE	Cairn 6- showing stone layer [078]
75	x	GWPK09-Job009-75	N	Cairn 3- half section (S facing section)
76	x	GWPK09-Job009-76	SE	Cairn 4 – half section showing [080], [081], [084], [085] and [086]
77	x	GWPK09-Job009-77	NW	Cairn 6- showing [079]
78	x	GWPK09-Job009-78	N	Shot of [082] with top level of iron fragments removed
79	x	GWPK09-Job009-79	S	N facing section of [082]
80	x	GWPK09-Job009-80	E	Pit [082] in foreground and inner kerb of Cairn 6 in background
81	x	GWPK09-Job009-81	E	Cairn 3- showing possible kerb stones
82	x	GWPK09-Job009-82	NW	Cairn 3
83	x	GWPK09-Job009-83	W	Cairn 3
84	x	GWPK09-Job009-84	SE	Cairn 3
85	x	GWPK09-Job009-85	NW	Cairn 6- showing half section through deposit [079]
86	x	GWPK09-Job009-86	NW	Cairn 6- showing half section through deposit [079]- detail
87	x	GWPK09-Job009-87	SW	Cairn 6- showing close up of coursing under kerb [070]
88	x	GWPK09-Job009-88	S	Cairn 6- showing close up of coursing under kerb [070]
89	x	GWPK09-Job009-89	S	Cairn 6- Fully excavated cairn with kerb remaining
90	x	GWPK09-Job009-90	N	Cairn 5 after removal of root disturbed material
91	x	GWPK09-Job009-91	SE	Cairn 4- showing contexts [080], [081], [084]
92	x	GWPK09-Job009-92	NW	Cairn 4- showing contexts [080], [081], [084]
93	x	GWPK09-Job009-93	E	Cairn 5 after removal of central stone
94	x	GWPK09-Job009-94	N	Cairn 1- half section
95	x	GWPK09-Job009-95	N	Cairn 1- half section
96	x	GWPK09-Job009-96	W	Cairn 1- general shot
97	x	GWPK09-Job009-97	N	Cairn 5- half section
98	x	GWPK09-Job009-98	NE	Cairn 3- with kerb [069]
99	x	GWPK09-Job009-99	NW	Cairn 3- Kerb
100	x	GWPK09-Job009-100	SW	Cairn 3
101	x	GWPK09-Job009-101	SW	Cairn 3

Picture no.	B&W print	Digital file name	Facing	Description
102	x	GWPK09-Job009-102	S	Cairn 3- boulder kerb
103	x	GWPK09-Job009-103	E	Cairn 3
104	x	GWPK09-Job009-104	E	Cairn 3
105	x	GWPK09-Job009-105	N	Cairn 5- record shot
106	x	GWPK09-Job009-106	NE	Cairn 4 –general shot after removal of [086] and [085]
107	x	GWPK09-Job009-107	NW	Cairn 4 –general shot after removal of [086] and [085]
108	x	GWPK09-Job009-108	W	Cairn 4 –general shot after removal of [086] and [085]
109	x	GWPK09-Job009-109	E	Cairn 4 –general shot after removal of [086] and [085]
110	x	GWPK09-Job009-110	NW	Cairn 3 [101] and [069]
111	x	GWPK09-Job009-111	NE	Cairn 3 [101] and [069]
112	x	GWPK09-Job009-112	SE	Cairn 3 [101] and [069]
113	x	GWPK09-Job009-113	SW	Cairn 3 [101] and [069]
114	x	GWPK09-Job009-114	NW	Cairn 6- SE facing section
115	x	GWPK09-Job009-115	NW	Cairn 6- SE facing section
116	x	GWPK09-Job009-116	W	Cairn 1- working shot including [092]
117	x	GWPK09-Job009-117	NW	Cairn 2 – Section including [097] and [098] (1 of 3)
118	x	GWPK09-Job009-118	N	Cairn 2 – Section including [097] and [098] (2 of 3)
119	x	GWPK09-Job009-119	NNE	Cairn 2 – Section including [097] and [098] (3 of 3)
120	x	GWPK09-Job009-120	S	Cairn 4 – Following removal of stones [069]
121	x	GWPK09-Job009-121	W	Cairn 4 – Following removal of stones [069]
122	x	GWPK09-Job009-122	N	Cairn 4 – Following removal of stones [069]
123	x	GWPK09-Job009-123	SE	Cairn 6 –post ex
124	x	GWPK09-Job009-124	NNW	Cairn 5
125	x	GWPK09-Job009-125	N	Cairn 5
126	x	GWPK09-Job009-126	SE	Cairn 5- working shot showing [105] [106] [103] and [102] removed
127	x	GWPK09-Job009-127	SE	Cairn 3- working shot
128	x	GWPK09-Job009-128	SW	Cairn 5- showing [111], [112]
129	x	GWPK09-Job009-129	SE	Cairn 5
130	x	GWPK09-Job009-130	NW	Cairn 5
131	x	GWPK09-Job009-131	SW	Cairn 5
132	x	GWPK09-Job009-132	SE	Cairn 5
133	x	GWPK09-Job009-133	E	Cairn 5
134	x	GWPK09-Job009-134	E	Cairn 3 – W facing section through base of cairn, showing [101]
135	x	GWPK09-Job009-135	E	Cairn 3 – W facing section through base of cairn, showing [101]
136	x	GWPK09-Job009-136	E	Cairn 2 – pre ex of [097] cairn material
137	x	GWPK09-Job009-137	W	Cairn 2 – pre ex of [097] cairn material
138	x	GWPK09-Job009-138	NW	Cairn 4 – SE facing section
139	x	GWPK09-Job009-139	NW	Cairn 4- SE facing section
140	x	GWPK09-Job009-140	NE	Cairn 4- SW facing section
141	x	GWPK09-Job009-141	NW	Cairn 4- working shot prior to removal of stones
142	x	GWPK09-Job009-142	N	Cairn 1- showing deposit [119]



Picture no.	B&W print	Digital file name	Facing	Description
143	x	GWPK09-Job009-143	N	Cairn 1- showing deposit [119]
144	x	GWPK09-Job009-144	E	Cairn 4 – section showing kubiena tins
145	x	GWPK09-Job009-145	SE	Cairn 5 Showing [104], [105], [117] , [118]
146	x	GWPK09-Job009-146	NE	Cairn 3 – general shot showing deposit under stone [101]
147	x	GWPK09-Job009-147	N	Cairn 1 – S facing section of cairn
148	x	GWPK09-Job009-148	N	Cairn 1- S facing section with kubiena tins in place
149	x	GWPK09-Job009-149	SE	Cairn 5 – fully excavated
150	x	GWPK09-Job009-150	NW	Cairn 1- deposit [119]
151	x	GWPK09-Job009-151	NW	Cairn 1- deposit [119]
152	x	GWPK09-Job009-152	NNE	Cairn 4- S facing section (1 of 2)
153	x	GWPK09-Job009-153	NE	Cairn 4- S facing section (2 of 2)
154	x	GWPK09-Job009-154	N	Cairn 4- E half of south facing section
155	x	GWPK09-Job009-155	N	Cairn 4- W half of south facing section
156	x	GWPK09-Job009-156	E	Cairn 3- section through base of cairn after removal of 101
157	x	GWPK09-Job009-157	E	Cairn 3, south end of Drawing 02
158	x	GWPK09-Job009-158	E	Cairn 3, north end of section Drawing 02
159	x	GWPK09-Job009-159	N	Cairn 3 – following removal of Boulder 101
160	x	GWPK09-Job009-160	NE	Cairn 3- Section
161	x	GWPK09-Job009-161	NW	Cairn 1- half section through layer [119]
162	x	GWPK09-Job009-162	NNW	Cairn 2- half section (1 of 3)
163	x	GWPK09-Job009-163	N	Cairn 2- half section (2 of 3)
164	x	GWPK09-Job009-164	NNE	Cairn 2- half section (3 of 3)
165	x	GWPK09-Job009-165	NW	Cairn 2 - general shot of S facing section
166	x	GWPK09-Job009-166	NW	Cairn 1 - fully excavated [050]
167	x	GWPK09-Job009-167	W	Cairn 2 - post ex shot of cairn - level 3
168	x	GWPK09-Job009-168	E	Cairn 2 - post ex shot of cairn - level 3
169	x	GWPK09-Job009-169	NW	Cairn 1- working shot - cleaning deposit underlying cairn
170	x	GWPK09-Job009-170	NE	Cairn 2 - working shot - Stephen surveying cairn 2
171	x	GWPK09-Job009-171	E	Bank 7 - working shot
172	x	GWPK09-Job009-172	W	Bank 8 - pre ex
173	x	GWPK09-Job009-173	E	Bank 9 - pre ex
174	x	GWPK09-Job009-174	E	Cairn 1 - post ex - sondage into natural
175	x	GWPK09-Job009-175	S	Cairn 1 - post ex - sondage into natural
176	x	GWPK09-Job009-176	N	Cairn 1 - post ex - sondage into natural
177	x	GWPK09-Job009-177	E	Cairn 1 - sondage W facing section
178	x	GWPK09-Job009-178	E	Cairn 1 - general post ex shot
179	x	GWPK09-Job009-179	SE	Cairn 2 - NW facing section of slot into natural beneath cairn
180	x	GWPK09-Job009-180	SW	Cairn 2 - post ex of cairn 2 with slot
181	x	GWPK09-Job009-181	NE	Cairn 3 - slot behind (101) showing B+C horizons and build up deposits around (101)
182	x	GWPK09-Job009-182	N	Cairn 3 - slot behind (101) showing B+C horizons and build up deposits around (101)

Picture no.	B&W print	Digital file name	Facing	Description
183	x	GWPK09-Job009-183	E	Cairn 3 - slot behind (101) showing B+C horizons and build up deposits around (101)
184	x	GWPK09-Job009-184	NE	Stony linear (131)
185	x	GWPK09-Job009-185	NE	Stony linear (131)
186	x	GWPK09-Job009-186	SW	Stony linear (131)
187	x	GWPK09-Job009-187	SW	Stony linear (131)
188	x	GWPK09-Job009-188	NW	Working shot of baulk across linear (132) - E end
189	x	GWPK09-Job009-189	SE	Working shot of baulk across linear (132) - E end
190	x	GWPK09-Job009-190	NE	View of section through stone bank (131)
191	x	GWPK09-Job009-191	SE	View of slot 1 through stone bank (131)
192	x	GWPK09-Job009-192	NE	View of section (slot 2) through (131)
193	x	GWPK09-Job009-193	SE	View of slot 2 through stone bank (131)
194	x	GWPK09-Job009-194	N	General view of stone bank (132)
195	x	GWPK09-Job009-195	SE	General view of stone banks (132) and (133)
196	x	GWPK09-Job009-196	N	General view of wall/bank (132) and (133)
197	x	GWPK09-Job009-197	S	View of section through stone bank (133)
198	x	GWPK09-Job009-198	NNE	Half section on NE of [131]
199	x	GWPK09-Job009-199	NE	General view of [132]
200	x	GWPK09-Job009-200	NE	Shot showing abundance of stones [132]
201	x	GWPK09-Job009-201	SW	Stones [132]
202	x	GWPK09-Job009-202	SW	General view of [132] and [133]
203	x	GWPK09-Job009-203	NW	View of slot through stone bank [132]
204	x	GWPK09-Job009-204	NW	Shot of SE facing section of [132]
205	x	GWPK09-Job009-205	W	Post excavation shot at T38 during Turbine construction
206	x	GWPK09-Job009-206	W	Post excavation shot at T38 during Turbine construction
207	x	GWPK09-Job009-207	W	Location shot of Structure [136] to West of T38
208	x	GWPK09-Job009-208	W	Detail shot of Structure [136] to West of T38
209	x	GWPK09-Job009-209	S	Detail shot of Structure [136] to West of T38
210	x	GWPK09-Job009-210	S	General shot of Structure [136] to West of T38
211	x	GWPK09-Job009-211	NE	General shot of Structure [136] to West of T38
212	x	GWPK09-Job009-212	W	General shot of structure with hazard tape, prior to fencing
213	x	GWPK09-Job009-213	NW	Trench excavated in area to North-east of T38
214	x	GWPK09-Job009-214	S	Watching brief in area to east of T38
215	x	GWPK09-Job009-215	N	Brash removal and deturfing at T38
216	x	GWPK09-Job009-216	SW	Wall [238] General shot
217	x	GWPK09-Job009-217	SW	Wall [238]
218	x	GWPK09-Job009-218	SW	Wall [238] detail of northern end
219	x	GWPK09-Job009-219	SW	Wall [238] detail of central area
220	x	GWPK09-Job009-220	SW	Wall [238] detail of southern end
221	x	GWPK09-Job009-221	SW	Wall [238] detail of southern end
222	x	GWPK09-Job009-222	NW	Wall [238] General shot



Picture no.	B&W print	Digital file name	Facing	Description
223	x	GWPK09-Job009-223	N	Cairn [239] Detail
224	x	GWPK09-Job009-224	S	Cairn [239] Detail
225	x	GWPK09-Job009-225	E	Cairn [239]
226	x	GWPK09-Job009-226	W	Cairn [239]
227	x	GWPK09-Job009-227	W	Cairn [239]
228	x	GWPK09-Job009-228	S	Excavation of slot through Cairn [239]
229	x	GWPK09-Job009-229	NW	Excavation of slot through Cairn [239]
230	x	GWPK09-Job009-230	SW	Section through [238]
231	x	GWPK09-Job009-231	N	Slot through [238]
232	x	GWPK09-Job009-232	NE	Section through [238]
233	x	GWPK09-Job009-233	SW	Shot following removal of [238]
234	x	GWPK09-Job009-234	W	E facing section through [239]
235	x	GWPK09-Job009-235	E	W facing section through [239]
236	x	GWPK09-Job009-236	E	Slot through [239]
237	x	GWPK09-Job009-237	E	Location shot of slot through [239]
238	x	GWPK09-Job009-238	S	Cairn [239] following removal of eastern side
239	x	GWPK09-Job009-239	N	Cairn [239] following removal of eastern side
240	x	GWPK09-Job009-240	NE	Oblique photo of Cairn 1
241	x	GWPK09-Job009-241	NNW	Post excavation shot of Cairn 1
242	-	GWPK09-Job009-242	N	Cairn 6, mid-ex shot
243	-	GWPK09-Job009-243	E	Cairn 6, oblique, mid-ex shot
244	-	GWPK09-Job009-244	E	Cairn 6, oblique, mid-ex shot
245	-	GWPK09-Job009-245	SSW	Cairn 6, inner kerb and deposit [078]
246	-	GWPK09-Job009-246	NNW	Cairn 6, inner kerb and deposit [078]
247	-	GWPK09-Job009-247	E	Cairn 6, inner kerb and deposit [078]
248	-	GWPK09-Job009-248	E	Cairn 6, basal deposit [078]
249	-	GWPK09-Job009-249	E	Cairn 5, oblique shot
250	-	GWPK09-Job009-250	N	Cairn 6, inner kerb and deposit [078]
251	-	GWPK09-Job009-251	N	Cairn 5, following half section of deposit
252	-	GWPK09-Job009-252	NNW	Cairn 5, following half section of deposit
253	-	GWPK09-Job009-253	E	Cairn 3, W facing section
254	-	GWPK09-Job009-254	W	Cairn 7, General shot
255	-	GWPK09-Job009-255	NNW	Cairn 6, inner kerb
256	-	GWPK09-Job009-256	SSW	Cairns 5 and 6 working shot in snow
257	-	GWPK09-Job009-257	SSW	Cairns 5 and 6 working shot in snow
258	-	GWPK09-Job009-258	E	Cairns 1, 2 and 4, working shot in snow
259	-	GWPK09-Job009-259	E	Cairns 1 and 2, working shot in snow
260	-	GWPK09-Job009-260	E	Cairns 5 and 6, working shot in snow
261	-	GWPK09-Job009-261	NNE	Working shot of Cairns 1, 2 and 4
262	-	GWPK09-Job009-262	E	Working shot of Cairn 4
263	-	GWPK09-Job009-263	N	Slot through Cairns 5 and 6

Picture no.	B&W print	Digital file name	Facing	Description
264	-	GWPK09-Job009-264	NNW	Cairn 4
265	-	GWPK09-Job009-265	E	General site shot
266	-	GWPK09-Job009-266	NNE	General site shot
267	-	GWPK09-Job009-267	NNE	General site shot
268	-	GWPK09-Job009-268	E	Cairns 5 and 6 pre-ex
269	-	GWPK09-Job009-269	NNE	Working shot
270	-	GWPK09-Job009-270	E	Panorama, working shot
271	-	GWPK09-Job009-271	E	Site in snow
272	-	GWPK09-Job009-272	E	Working shot of Cairns 5 and 6 in snow
273	-	GWPK09-Job009-273	E	Panorama of Cairns 1-6 in snow
274	-	GWPK09-Job009-274	E	Pre-ex photo of Cairn 2
275	-	GWPK09-Job009-275	NE	Pre-ex photo of Cairn 5
276	-	GWPK09-Job009-276	NNE	Cairns 1, 2 and 3, Level 1, oblique photo
277	-	GWPK09-Job009-277	E	Cairn 1, Level 1 and Cairn 2, level 1, oblique photo
278	-	GWPK09-Job009-278	NE	Cairn 1, Level 2, oblique photo
279	-	GWPK09-Job009-279	E	Cairn 1, Level 3 oblique photo
280	-	GWPK09-Job009-280	NE	Cairn 1, Level 4 oblique photo
281	-	GWPK09-Job009-281	E	Cairn 2, Level 1 oblique photo
282	-	GWPK09-Job009-282	E	Cairn 2, Level 1 oblique photo
283	-	GWPK09-Job009-283	E	Cairn 2, Level 2 oblique photo
284	-	GWPK09-Job009-284	E	Cairn 2, Level 3 oblique photo
285	-	GWPK09-Job009-285	NNE	Cairn 3, Level 4 oblique photo
286	-	GWPK09-Job009-286	NNW	Cairn 3, level 4 oblique photo
287	-	GWPK09-Job009-287	E	Cairn 4, level 1 oblique photo
288	-	GWPK09-Job009-288	E	Cairn 4, level 1, oblique photo
289	-	GWPK09-Job009-289	E	Cairn 4, level 1 oblique photo
290	-	GWPK09-Job009-290	E	Cairn 4, level 3 oblique photo
291	-	GWPK09-Job009-291	W	Cairn 4, Level 4 oblique photo
292	-	GWPK09-Job009-292	S	Cairn 4, Level 4 oblique photo
293	-	GWPK09-Job009-293	NNE	Cairn 5, Level 1 oblique photo
294	-	GWPK09-Job009-294	W	Cairn [131] oblique photo
295	-	GWPK09-Job009-295	E	Cairn 5, Level 4 oblique photo
296	-	GWPK09-Job009-296	SSE	Cairn 5, Level 5 oblique photo
297	-	GWPK09-Job009-297	E	Cairn 5, Level 3
298	-	GWPK09-Job009-298	E	Cairn 6, Level 3
299	-	GWPK09-Job009-299	E	Cairn 6, Level 5
300	-	GWPK09-Job009-300	NE	Stone banks [131], [132] and [133]
301	-	GWPK09-Job009-301	N	Stone banks [132] and [133]
302	-	GWPK09-Job009-302	N	Stone banks [132] and [133]
303	-	GWPK09-Job009-303	N	Stone banks [132] and [133]
304	-	GWPK09-Job009-304	N	Stone banks [132] and [133]



Picture no.	B&W print	Digital file name	Facing	Description
305	-	GWPK09-Job009-305	N	Stone banks [131], [132] and [133]
306	-	GWPK09-Job009-306	N	Stone banks [131], [132] and [133]
307	-	GWPK09-Job009-307	N	Stone banks [131], [132] and [133]
308	-	GWPK09-Job009-308	N	Panorama, stone banks [131], [132] and [133]
309	-	GWPK09-Job009-309a-k	-	Cairn 1, Level 1a- Vertical photos
310	-	GWPK09-Job009-310 a-z	-	Cairn 1, Level 1b- Vertical photos
311	-	GWPK09-Job009-311a-m	-	Cairn 1- Level 2- Vertical photos
312	-	GWPK09-Job009-312a-o	-	Cairn 1- Level 3- Vertical photos
313	-	GWPK09-Job009-313a-i	-	Cairn 1-Level 4- Vertical photos
314	-	GWPK09-Job009-314a-k	-	Cairn 2- Level 1 a- Vertical photos
315	-	GWPK09-Job009-315a-x	-	Cairn 2- Level 1b-Vertical photos
316	-	GWPK09-Job009-316a-m	-	Cairn 2- Level 2- Vertical photos
317	-	GWPK09-Job009-317a-n	-	Cairn 2- Level 3- Vertical photos
318	-	GWPK09-Job009-318a-d	-	Cairn 3- Level 1- Vertical photos
319	-	GWPK09-Job009-319a-e	-	Cairn 3- Level 2- Vertical photos
320	-	GWPK09-Job009-320a-b	-	Cairn 3- Level 3- Vertical photos
321	-	GWPK09-Job009-321a	-	Cairn 3- Level 4- Vertical photos
322	-	GWPK09-Job009-322a-e	-	Cairn 4-Level 1- Vertical photos
323	-	GWPK09-Job009-323a-g	-	Cairn 4- Level 2- Vertical photos
324	-	GWPK09-Job009-324a-f	-	Cairn 4- Level 3- Vertical photos
325	-	GWPK09-Job009-325a-b	-	Cairn 4- Level 4- Vertical photos
326	-	GWPK09-Job009-326a-c	-	Cairn 4- Level 5- Vertical photos
327	-	GWPK09-Job009-327a-g	-	Cairn 5- Level 1- Vertical photos
328	-	GWPK09-Job009-328a-k	-	Cairn 5-Level 2b- Vertical photos
329	-	GWPK09-Job009-329a-h	-	Cairn 5- Level 2c- Vertical photos
330	-	GWPK09-Job009-330a-j	-	Cairn 5- Level 3- Vertical photos
331	-	GWPK09-Job009-331a-g	-	Cairn 5- Level 4- Vertical photos
332	-	GWPK09-Job009-332a-d	-	Cairn 5- Level 5- Vertical photos
333	-	GWPK09-Job009-333a-c	-	Cairn 5- Level 6- Vertical photos
334	-	GWPK09-Job009-334a-e	-	Cairn 6- Level 1- Vertical photos
335	-	GWPK09-Job009-335a-d	-	Cairn 6- Level 2- Vertical photos
336	-	GWPK09-Job009-336a-c	-	Cairn 6- Level 3- Vertical photos
337	-	GWPK09-Job009-337-e	-	Cairn 6-Level 4-Vertical photos
338	-	GWPK09-Job009-338	-	Cairn 1-Level 1a-stitched vertical photos
339	-	GWPK09-Job009-339	-	Cairn 1-Level 1b-stitched vertical photos
340	-	GWPK09-Job009-340	-	Cairn 1-Level 2- stitched vertical photos
341	-	GWPK09-Job009-341	-	Cairn 2- Level 1b- Stitched vertical photos
342	-	GWPK09-Job009-342	-	Cairn 2- Level 2- Stitched vertical photos
343	-	GWPK09-Job009-343	-	Cairn 3- Level 1- Stitched vertical photos
344	-	GWPK09-Job009-344	-	Cairn 3- Level 2- Stitched vertical photos
345	-	GWPK09-Job009-345	-	Cairn 3- Level 3- Stitched vertical photos

Picture no.	B&W print	Digital file name	Facing	Description
346	-	GWPK09-Job009-346	-	Cairn 3-Level 4- Stitched vertical photos
347	-	GWPK09-Job009-347	-	Cairn 4- Level 1- stitched vertical photos
348	-	GWPK09-Job009-348	-	Cairn 4- Level 2- stitched vertical photos
349	-	GWPK09-Job009-349	-	Cairn 4- Level 3- stitched vertical photos
350	-	GWPK09-Job009-350	-	Cairn 4- Level 4- stitched vertical photos
351	-	GWPK09-Job009-351	-	Cairn 4- Level 5- stitched vertical photos
352	-	GWPK09-Job009-352	-	Cairn 5- Level 1- stitched vertical photos
353	-	GWPK09-Job009-353	-	Cairn 5-Level 2b- Stitched vertical photos
354	-	GWPK09-Job009-354	-	Cairn 5 -Level 2c - Stitched vertical photos
355	-	GWPK09-Job009-355	-	Cairn 5 - Level 3 - stitched vertical photos
356	-	GWPK09-Job009-356	-	Cairn 5 - Level 4 - stitched vertical photos
357	-	GWPK09-Job009-357	-	Cairn 5 - Level 5 - stitched vertical photos
358	-	GWPK09-Job009-358	-	Cairn 5 - Level 6 - stitched vertical photos
359	-	GWPK09-Job009-359	-	Cairn 6- Level 1 - stitched vertical photos
360	-	GWPK09-Job009-360	-	Cairn 6 - Level 2- stitched vertical photos
361	-	GWPK09-Job009-361	-	Cairn 6- Level 3- stitched vertical photos
362	-	GWPK09-Job009-362	-	Cairn 6 -Level 3 - Stitched vertical photos
363	-	GWPK09-Job009-363	-	Cairn 6 - Level 4 - stitched vertical photos
363	-	GWPK09-Job009-363	-	Cairn 6- Level 5 - stitched vertical photos
364	-	GWPK09-Job009-364a-j	-	Stone bank [131]
365	-	GWPK09-Job009-365a-e	-	Stone bank [131]
366	-	GWPK09-Job009-366a-z	-	Stone banks [132] and [133]
367	-	GWPK09-Job009-367 a-m	-	Stone banks [132] and [133] continued
367	-	GWPK09-Job009-368a-f	-	Stone banks [131], [132] and [133] stitched
369	-	GWPK09-Job009-369a-w	-	Stone banks [132] and [133]

Small finds register

Small Finds no.	Context no.	Description
001	057	Iron lump
002	065	Iron object
003	065	Lead alloy
004	065	Iron object
005	065	Iron object
006	065	Iron object
007	065	Iron object
008	065	Iron object
009	065	Iron object
010	u/s	Iron slag , disturbed by plough, located on south side of Cairn 4



Small Finds no.	Context no.	Description
011	065	Iron object
012	065	Iron object
013	083	Iron objects found within pit [082]
014	083	Copper object
015	051	Iron object (from furrow to SE of Cairn 2)
016	052	Iron object (from furrow to SE of Cairn 2)
017	095	Iron object
018	095	Iron object
019	095	Iron object
020	095	Large Iron object
021	134	Iron object
022	098	Glass bottle fragments
023	107	Iron fragments

Sample register

Sample no.	Context no.	Description
001	083	Fill of possible pit [082]
002	-	Void
003	088	Kubiena sample from beneath Cairn 4 (Tin 1)
004	114	Kubiena sample from beneath Cairn 4 (Tin 2)
005	115	Kubiena sample from beneath Cairn 4 (Tin 3)
006	-	Kubiena sample from beneath Cairn 1 (Tin 1)
007	-	Kubiena sample from beneath Cairn 1 (Tin 2)
008	113	Deposit - Cairn 4
009	125	Loamy sand from Cairn 2
010	107	Deposit from beneath boulder Cairn 3

Appendix 2 – Environmental tables

Retent sample results

Context no.	Sample no.	Sample Vol (l)	Metal	Charcoal		Material available for AMS Dating	Comments
			Fe object	Quantity	Max Size (cm)		
83	1	10	-	+	<0.5	-	Charcoal not retained
113	8	10	-	++	0.8	-	-
125	9	10	-	++	1	Charcoal +	-
107	10	10	-	+	0.5	-	-

Key:

+ = rare

++ = occasional

+++ = common

++++ = abundant

NB charcoal over 1cm is suitable for identification and AMS dating

Flotation sample results

Context no.	Sample no.	Total flot Vol (ml)	Plant remains	Charcoal Quantity	Charcoal Max size (cm)	Material available for AMS	Comments
083	1	20	Uncharred root fragments ++++	-	-	-	Archaeologically sterile
107	10	60	-	-	-	-	Archaeologically sterile
113	8	20	Uncharred root fragments ++++	+	<0.5	-	-
125	9	20	Fungal sclerotia + Uncharred heather stems and root fragments ++	+++	1	Charcoal +	-

Key:

+ = rare

++ = occasional

+++ = common

++++ = abundant

NB charcoal over 1cm is suitable for identification and AMS dating



Appendix 3 – Finds catalogue

34

Feature	Context no.	SF	Sample	Quantity	Material	Object	Description	X-Ray	Period
Topsoil	51	15	–	1	Iron	Nail	small	XR1	–
Glacial Till	52	16	–	1	Iron	Shaft	thick shaft	XR4	–
Cairn 2	98	22	–	13	Glass	Bottle	sherds from same green bottle, embossed lettering on base, "...URCE-SOURCE SAL..." and "...RAND..."	–	L.19th–20th century
Cairn 4	U/S	10	–	1	DISCARDED	–	stone picked up as iron	–	–
Cairn 6	57	1	–	1	Iron	Lump	formless	XR5	–
Cairn 6	65	2	–	5	Iron	Objects	square lump, shaft, nail, fragments	XR4	–
Cairn 6	65	3	–	1	Lead Alloy	Lump	irregular shaped	–	–
Cairn 6	65	4	–	3	Iron	Fragments	–	XR1	–
Cairn 6	65	5	–	1	Iron	Nail	shaft	XR1	–
Cairn 6	65	6	–	1	Iron	Bar	long object, tapering towards one end	XR4	–
Cairn 6	65	7	–	1	Iron	Bar	thick rectangular object	XR4	–
Cairn 6	65	8	–	2	Iron	Objects	shaft and hooked object	XR3	–
Cairn 6	65	9	–	5	Iron	Lumps	various lumps	XR3	–
Cairn 6	65	11	–	1	Iron	Nail	shaft	XR1	–
Cairn 6	65	12	–	5	Iron	Lumps	square lump and fragments	XR1	–
Cairn 6	83	13	–	1	Iron	Chain?	large lump, possibly part of twisted chain. Hint of large oval links visible in x-ray. Associated fragments.	XR5	Mod
Cairn 6	83	14	–	15	Copper Alloy	Object	curving sheet with moulded ribs on one side, possibly part of container or machinery	XR3	Mod
Cairn 6	95	17	–	1	Iron	Nail	large shaft and head	XR2	–
Cairn 6	95	18	–	1	Iron	Lump	rounded	XR2	–
Cairn 6	95	19	–	1	Iron	Lump	rounded	XR2	–
Cairn 6	95	20	–	1	Iron	Lump	large flat sub-rectangular object	XR6	–
Stone Dyke	134	21	–	1	Iron	Shaft	long object	XR2	–
Organic deposit	107	23	10	2	Iron	Fragments	nail fragments?	–	–



Headland Archaeology (UK) Ltd
© **Headland Archaeology (UK) Ltd 2011**

North East (HQ)

13 Jane Street, Edinburgh EH6 5HE

T 0131 467 7705 • **F** 0131 467 7706 • **E** office@headlandarchaeology.com

North West

10 Payne Street, Glasgow G4 0LF

T 0141 354 8100 • **F** 0141 332 9388 • **E** glasgowoffice@headlandarchaeology.com

Midlands & West

Unit 1, Premier Business Park, Faraday Road, Hereford HR4 9NZ

T 0143 236 4901 • **F** 0143 236 4900 • **E** hereford@headlandarchaeology.com

South & East

Technology Centre, Stanbridge Road, Leighton Buzzard, Bedfordshire LU7 4QH

T 01525 850 878 • **E** leighton.buzzard@headlandarchaeology.com

www.headlandarchaeology.com