



LUGGATE STEADING, EAST LINTON, EAST LOTHIAN

Historic Building Recording

for Wilke Construction Ltd

10/00454/P 10/00595/P

February 2012



Headland Archaeology (UK) Ltd
© Headland Archaeology (UK) Ltd 2012

North East
13 Jane Street, Edinburgh EH6 5HE
T 0131 467 7705 • F 0131 467 7706 • E office@headlandarchaeology.com

North West
10 Payne Street, Glasgow G4 0LF
T 0141 354 8100 • F 0141 332 9388 • E glasgowoffice@headlandarchaeology.com

Midlands & West
Unit 1, Premier Business Park, Faraday Road, Hereford HR4 9NZ
T 0143 236 4901 • F 0143 236 4900 • E hereford@headlandarchaeology.com

South & East
Technology Centre, Stanbridge Road, Leighton Buzzard, Bedfordshire LU7 4QH
T 01525 850 878 • E leighton.buzzard@headlandarchaeology.com

www.headlandarchaeology.com

LUGGATE STEADING, EAST LINTON, EAST LOTHIAN

Historic Building Recording

for Wilke Construction Ltd

10/00454/P & 10/00595/P

February 2012

HA Job no.: LSEL11

NGR: NT 59587 74684

Parish: Whittingehame

Council: East Lothian

OASIS ref.: 119453

Project Manager

Tim Holden

Author

Tim Holden incorporating the report by
Ian Parsons Architect

Fieldwork

Ross Murray & Tim Holden

Graphics

Julia Bastek

Approved by

Tim Holden – Project Manager

..... *Tim Holden*



CONTENTS

1.	INTRODUCTION	1
2.	METHODS	1
	2.1 Photographic survey	1
	2.2 Metric survey	1
3.	DISCUSSION	1
4.	REFERENCES	1
	APPENDICES	2
	Appendix 1 – Site register	2
	<i>Photographic register</i>	2
	Appendix 2 – Discovery and Excavation in Scotland entry	15

LIST OF ILLUSTRATIONS

<i>Illus 1</i>		3
	<i>Plan</i>	
<i>Illus 2</i>		5
	<i>North & South facing elevations</i>	
<i>Illus 3</i>		7
	<i>East & West facing elevations</i>	
<i>Illus 4</i>		9
	<i>North & South facing courtyard elevations</i>	
<i>Illus 5</i>		11
	<i>West & East facing courtyard elevations</i>	
<i>Illus 6</i>		13
	<i>East facing elevation central range</i>	

LUGGATE STEADING, EAST LINTON, EAST LOTHIAN

Historic Building Recording

1. INTRODUCTION

Luggate Steading, located approximately 2km to the S of East Linton, is one of many mixed economy steadings constructed in East Lothian during the mid 19th century. Detailed estate plans exist for both the original construction of the steading in the 1850s and also significant extensions in the 1870s. Together with the field observations these enable a good interpretation of the development over the last 150 years.

This report is in response to a planning condition for development of Luggate Steading. Prior to this condition Ian Parsons Architects produced a very comprehensive 'assessment' of the building which includes extensive documentary research, phased plans, newspaper searches and annotated photographic elevations. The current report is intended, not to replicate any of this earlier work but to fill any gaps that might be expected of a standard HBR report that is, in all ways, suitable for archiving in the National Monuments Record and standard data repositories (DES and OASIS). The two reports should be read in conjunction.

Specifically the objective of this report as outlined in the Written Scheme of Investigation and approved by East Lothian Council are:

- To provide a systematic and fully catalogued photographic record of the buildings prior to development - to include full coverage of all external elevations.
- To annotate pre-existing architectural elevations and plans with any significant archaeological features not been previously recorded.
- To pull together the above data into a written report that augments the previously provided assessment and puts both into a format suitable for inclusion into both the local and National Archives.

2. METHODS

2.1 Photographic survey

A full photographic survey of the building and details of interest were made using colour slide film supported by digital coverage. The photos include general contextual shots, feature/context specific shots and detail shots of all elevations. Each photograph has been individually numbered and digital versions have been provided as part of the project archive.

2.2 Metric survey

The survey has utilized existing drawings by EMA architecture and design to produce annotated plans or elevations of the site. These drawings were checked in the field and any newly identified features added.

3. DISCUSSION

As outlined in the Parsons' report the original steading is constructed of roughly squared red sandstone in all areas accessible to public view such as the façade and main buildings. Elsewhere, a broader spectrum of random rubble and squared blocks have been used, particularly in areas routinely used by animals. Wherever the original roof survives this was of red pan tiles. Door and window margins, quoins and copes all utilise dressed red sandstone although in the later (post 1870s) buildings the stone is lighter in colour and is probably from a different quarry.

The estate plans show that the steading was constructed on a green field site, opposite the farmhouse on the S side of the road, some time in the 1840s. The S range was

largely designed to house the working horses and carts. Internally it was constructed around a single courtyard divided into four cattle enclosures each with an adjacent byre accessed via an arched double door. Two of these have now been removed. The west range was devoted to cereal processing and located to provide ease of access between the steam-powered threshing and other machines and the stack yard. The complex was considerably extended in the 1870s with the addition of implement sheds and covered feeding areas to accommodate increasing mechanisation and changing agricultural practice.

As a whole the complex has a simple and solid feel to it. Ornamentation, such as the pyramidal capping to gate piers is kept to a minimum but the architect was careful to preserve symmetry, particularly along the long external facades through the use of blind windows and other features. Modifications in the 1870 were on a grand scale with the new turnip house and cattle shades utilising massive stone corbels and timber work that were almost Baronial in scale.

As a mixed farm it both enabled the control and management of cattle and the processing and storage of cereals. Many of the post-1870s modifications were less sympathetic to the character of the building and largely designed to allow access by tractors and other machinery to assist with mucking out, feeding and cereal processing.

4. REFERENCES

Parsons, I 2009 *Luggate Steading, East Linton, East Lothian*, Unpublished report.



APPENDICES

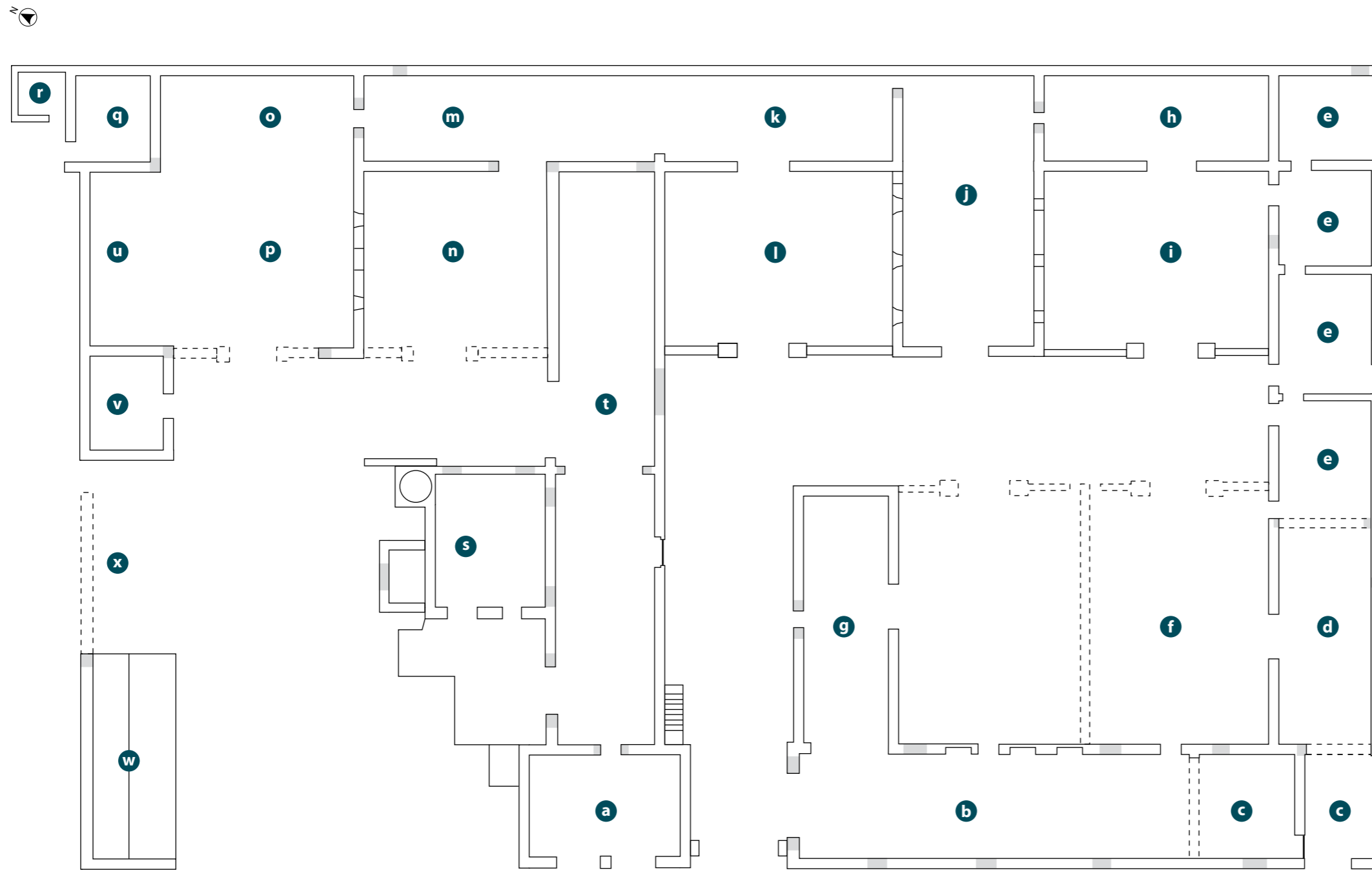
Appendix 1 – Site register

Photographic register

Photo no.	Direction facing	Description
001	–	ID shot
002	N	Southern range cart shed. South facing elevation from the south.
003	N	Southern range. South facing exterior elevation from the south.
004	N	Southern range. South facing exterior elevation from the south.
005	N	Southern range. South facing exterior elevation from the south.
006	N	Southern range. South facing exterior elevation from the south.
007	N	Southern range. South facing exterior elevation from the south.
008	N	Southern range. South facing exterior elevation from the south.
009	N	Southern range. South facing exterior elevation from the south.
010	W	Southern range. General view of interior from the east.
011	E	Southern range. General view of interior from the west.
012	S	Southern range. North facing exterior elevation from the north.
013	S	Southern range. North facing exterior elevation from the north.
014	S	Southern range. North facing exterior elevation from the north.
015	S	Southern range. North facing exterior elevation from the north.
016	S	Southern range. North facing exterior elevation from the north.
017	S	Southern range. North facing exterior elevation from the north.
018	W	Eastern range. West facing exterior elevation from west.
019	W	Eastern range. West facing exterior elevation from west.
020	W	Eastern range. West facing exterior elevation from west.
021	W	Eastern range. West facing exterior elevation from west.
022	W	Eastern range. West facing exterior elevation from west.
023	W	Eastern range. West facing exterior elevation from west.
024	W	Eastern range. West facing exterior elevation from west.
025	W	Eastern range. West facing exterior elevation from west.
026	W	Eastern range. East facing exterior elevation from east.
027	W	Eastern range. East facing exterior elevation from east.
028	W	Eastern range. East facing exterior elevation from east.
029	W	Eastern range. East facing exterior elevation from east.
030	W	Eastern range. East facing exterior elevation from east.
031	W	Eastern range. East facing exterior elevation from east.
032	W	Eastern range. East facing exterior elevation from east.
033	W	Eastern range. East facing exterior elevation from east.

Photo no.	Direction facing	Description
034	S	Northern range. North facing exterior elevation from north.
035	S	Northern range. North facing exterior elevation from north.
036	S	Northern range. North facing exterior elevation from north.
037	S	Northern range. North facing exterior elevation from north.
038	S	Northern range. North facing exterior elevation from north.
039	S	Northern range. North facing exterior elevation from north.
040	–	ID shot
041	S	Northern range. North facing exterior elevation from north.
042	S	Northern range. North facing exterior elevation from north.
043	S	Northern range. North facing exterior elevation from north.
044	S	Northern range. North facing exterior elevation from north.
045	SE	General view of landscape behind the northern range.
046	E	General view of landscape behind the northern range.
047	NE	General view of landscape behind the northern range.
048	N	General view of landscape behind the northern range.
049	NW	General view of landscape behind the northern range.
050	E	Western range. West facing exterior elevation from west.
051	E	Western range. West facing exterior elevation from west.
052	E	Western range. West facing exterior elevation from west.
053	N	Western range. South facing exterior elevation from south.
054	W	Western range. East facing exterior elevation from east.
055	W	Western range. East facing exterior elevation from east.
056	W	Western range. East facing exterior elevation from east.
057	N	Northern range. South facing exterior elevation from south.
058	E	Central range. West facing exterior elevation from the west.
059	E	Central range. West facing exterior elevation from the west.
060	E	Central range. West facing exterior elevation from the west.
061	E	Central range. West facing exterior elevation from the west.
062	E	Machine shed. West facing exterior elevation from the west
063	E	Machine shed. West facing exterior elevation from the west
064	N	Machine shed. North facing exterior elevation from the south.
065	E	Southern range cart shed. West facing exterior elevation from the west.
066	E	Southern range cart shed. West facing exterior elevation from the west.
067	NW	Southern range cart shed. East facing exterior elevation from the east.
068	SW	Central range. East facing exterior elevation from the northeast.
069	SW	Central range. East facing exterior elevation from the northeast.
070	W	Central range. East facing exterior elevation from the east.
071	N	Entrance to western cattle court from the south.
072	E	Turnip store. West facing exterior elevation from the west.

Photo no.	Direction facing	Description
073	NE	Turnip store. Details of stone corbles.
074	N	Northern range. Entrance to western cattle court. South facing exterior elevation from south.
075	W	Western range. East facing exterior elevation from east.
076	NE	Turnip store. South facing exterior elevation from the southwest.
077	N	Turnip store. South facing exterior elevation from the south.
078	NW	Turnip store. General view of interior from the south.
079	NE	Turnip store. South facing exterior elevation from the southwest.
080	W	Turnip store. East facing exterior elevation from the east.
081	N	Northern range. Entrance to eastern cattle court. South facing exterior elevation from south.
082	SW	Extension from southern range. Gable end. North facing exterior elevation from northeast.
083	E	Extension from southern range. West facing exterior elevation from west.
084	E	Extension from southern range. West facing exterior elevation from west.
085	NE	Southern range. West facing exterior elevation from southwest.
086	SE	General view of courtyard from northwest.
087	NE	General view of courtyard from south.
088	NE	General view of courtyard from southwest.
089	N	General view of courtyard from south.
090	NW	General view of courtyard from south.
091	N	General view of interior of eastern range from the south.
092	E	General view of courtyard from west.
093	S	General view from western cattle court.
094	–	–
095	NE	General view of cart shed and southern range from the southwest.
096	N	Western range. South facing exterior elevation from south.
097	N	General view of cart shed and machine shed from the south.
098	NW	General view of western range from the southeast.
099	NW	General view of gap in western range from the southeast.
100	N	Machine shed. South facing exterior elevation. Detail of door from the south.
101	E	Machine shed. West facing exterior elevation. Detail of hole at base of chimney from the west.
102	S	Western range. North facing exterior elevation of broken out wall from the north.
103	E	Western range. North facing exterior elevation from the west.
104	SE	Western range. North facing exterior elevation from the northwest

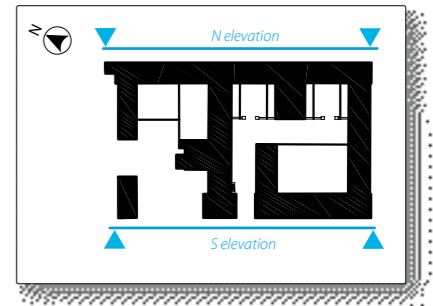
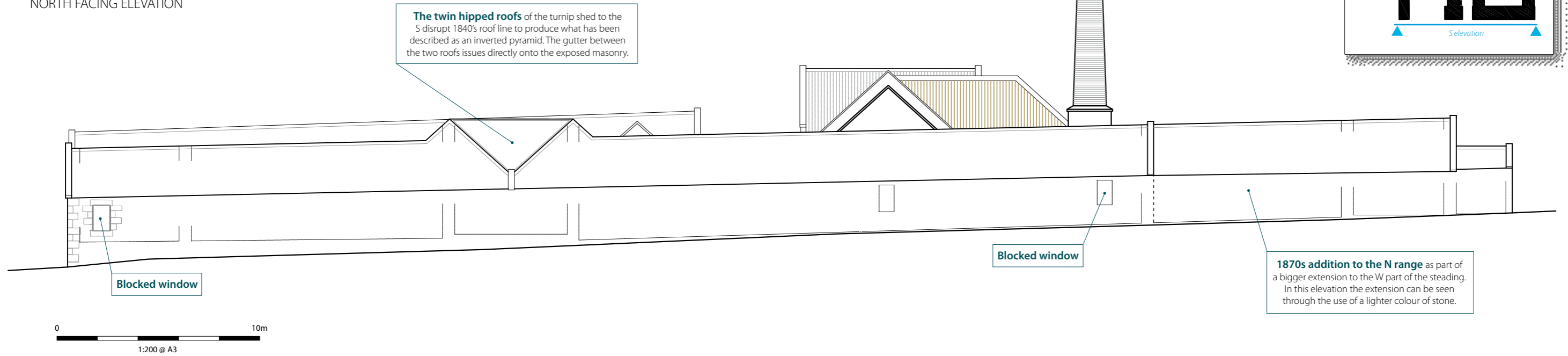


Key

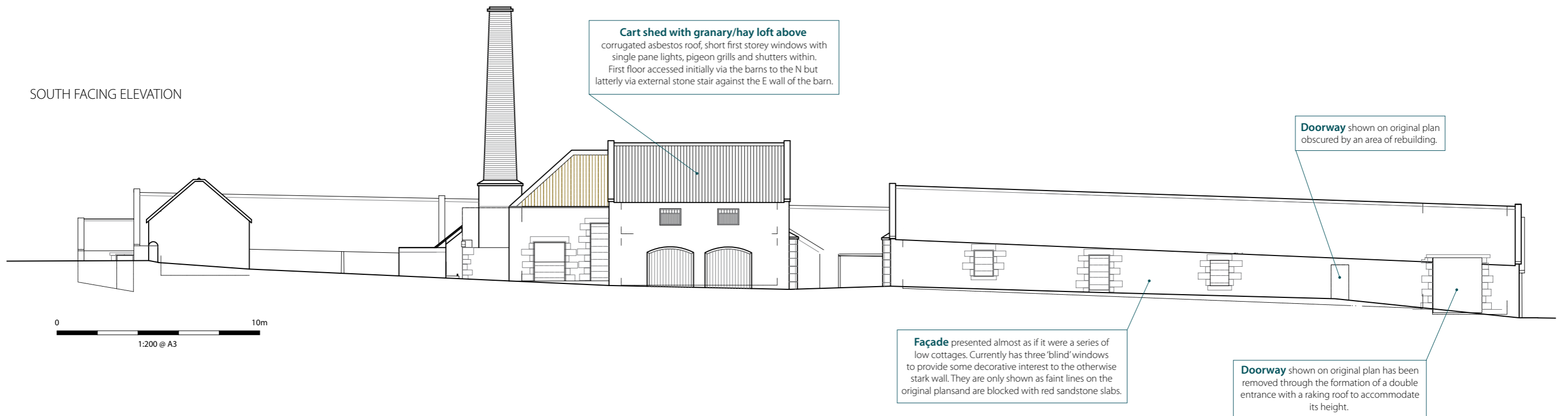
- a** Cart shed and granary/hay loft
- b** Stables
Original fillings and dividing walls removed.
The main room contains a number of full height recesses of uncertain function together with three blocked windows and two doorways giving access to the courtyard to the N.
- c** Tack/storage rooms
Dividing walls and internal features now removed.
- d** Byre
Opening onto adjacent courtyard.
- e** Storage/ancillary rooms
- f** Enclosed cattle court
Originally two enclosed spaces, this was modified in the 1870s with insertion of roofed feeding area over the central wall, currently a single open space.
- g** Byre
- h** Byre
- i** Enclosed cattle court
- j** Turnip shed
Originally forming a part of the byre and cattle court but modified in the 1870s to create a central shed with feeding holes supplying roofed feeding troughs to the E & W.
- k** Byre
- l** Enclosed cattle court
- m** Byre
- n** Cattle court
- o** Open shelter/implement shed
- p** Cattle/animal court
- q** Hen house
- r** Duck house
- s** Boiler/engine room
- t** Barn/granary
- u** Open shelter/implement shed
- v** Tool/ancillary room
- w** Ancillary building
Originally part of the 1870s W range that was separated from the rest of the building when an entrance was driven through some time in the 20th century. Currently used as a garage.
- x** Opening
Made in pre-existing W range to provide access to the stack yard to the W.
- - -** Demolished features

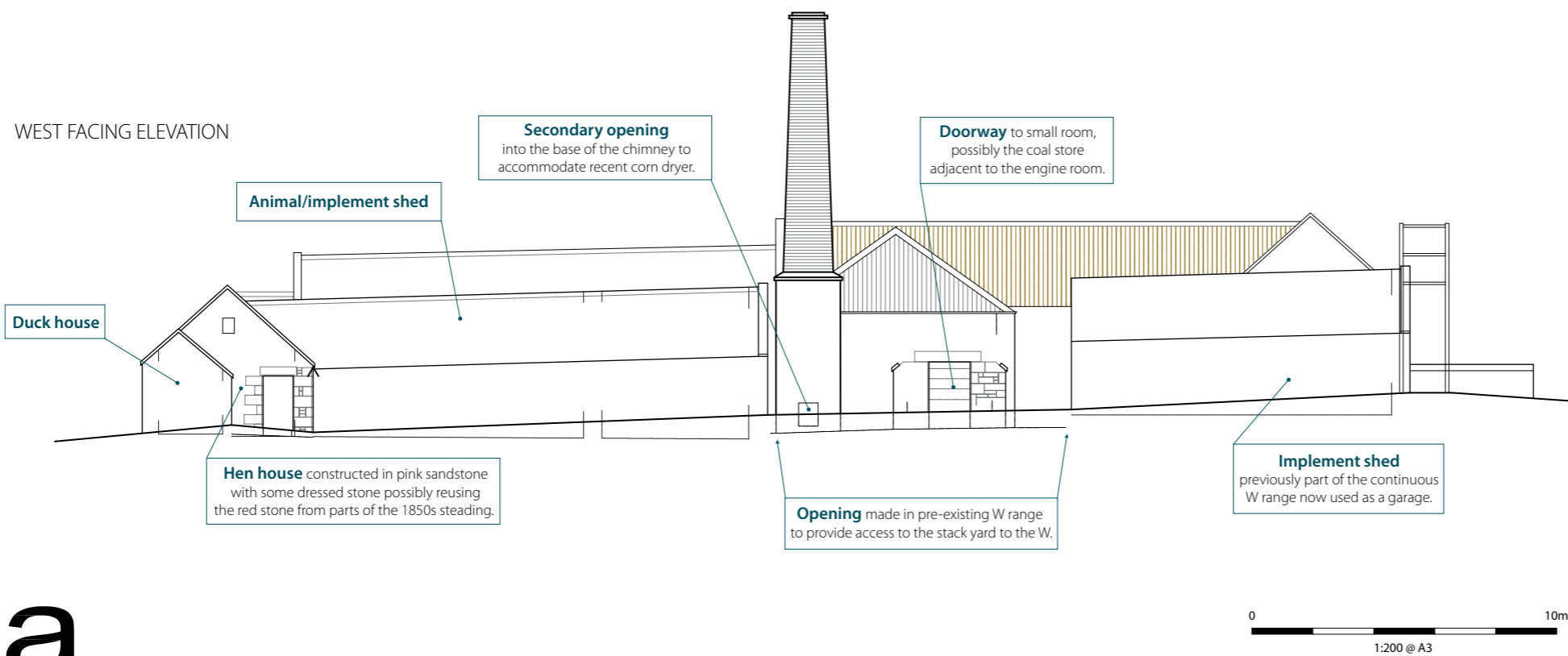
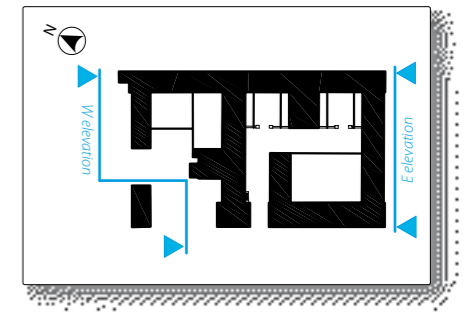
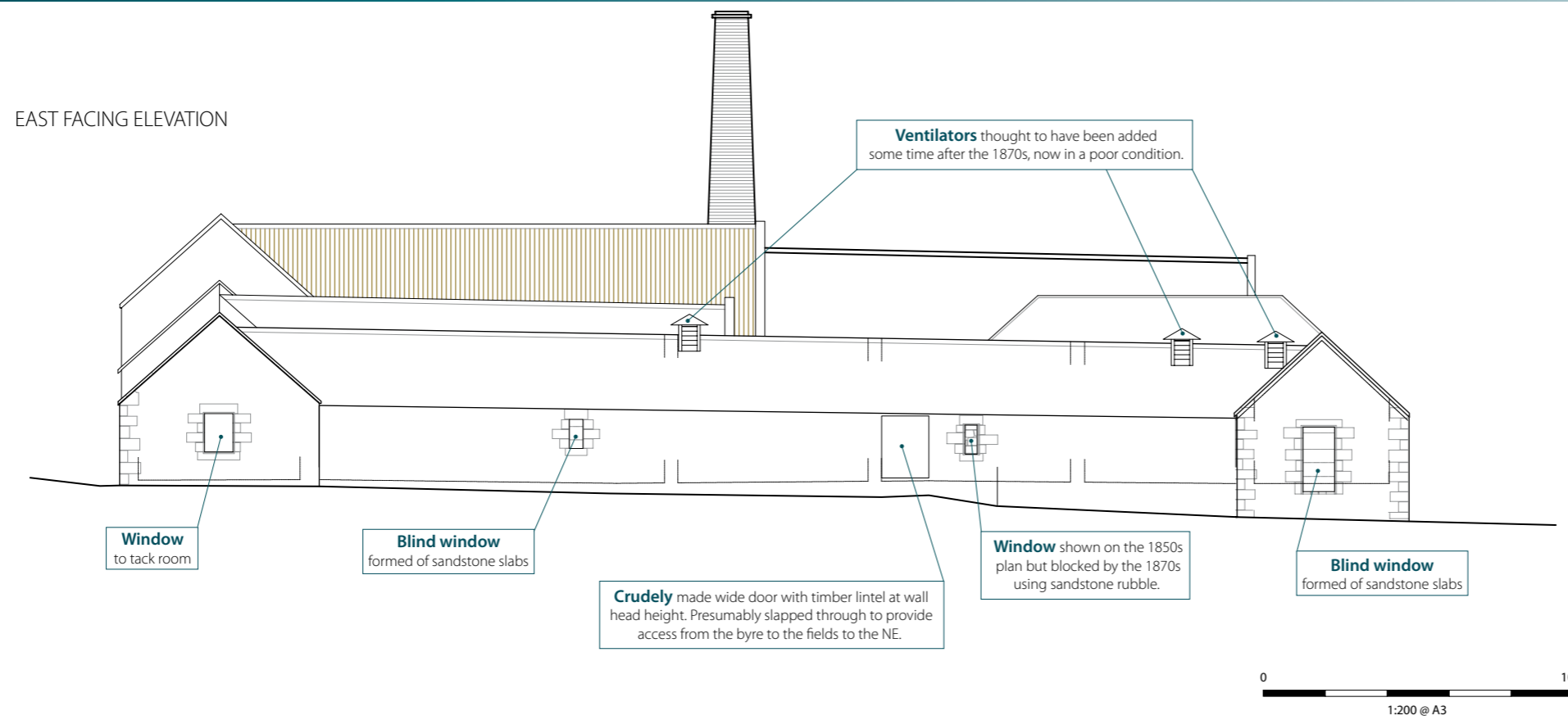
0 10m
1:250 @ A3

NORTH FACING ELEVATION

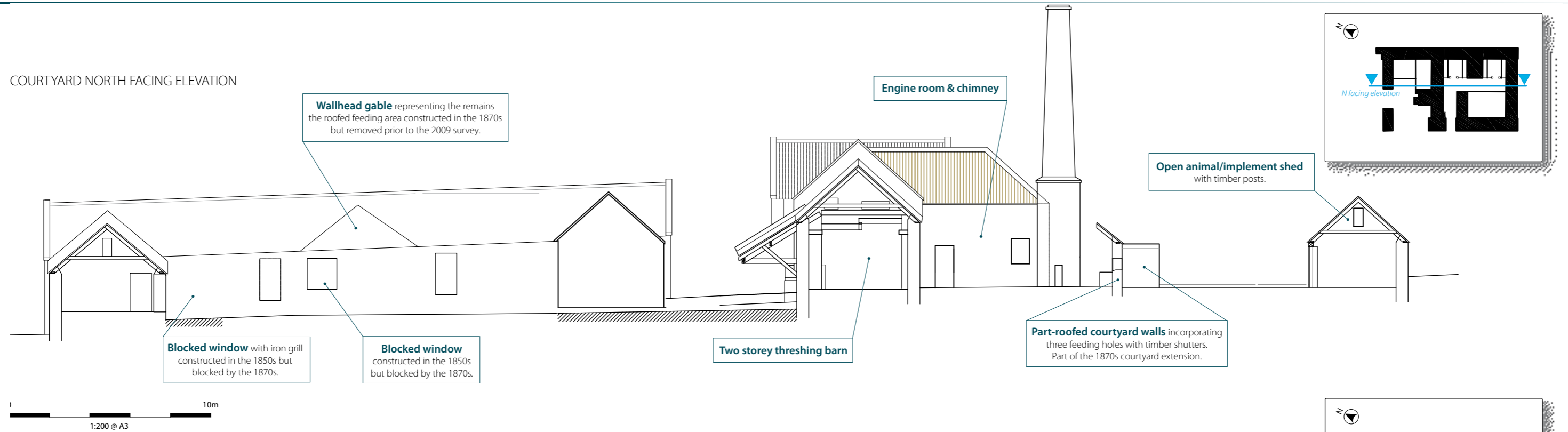


SOUTH FACING ELEVATION

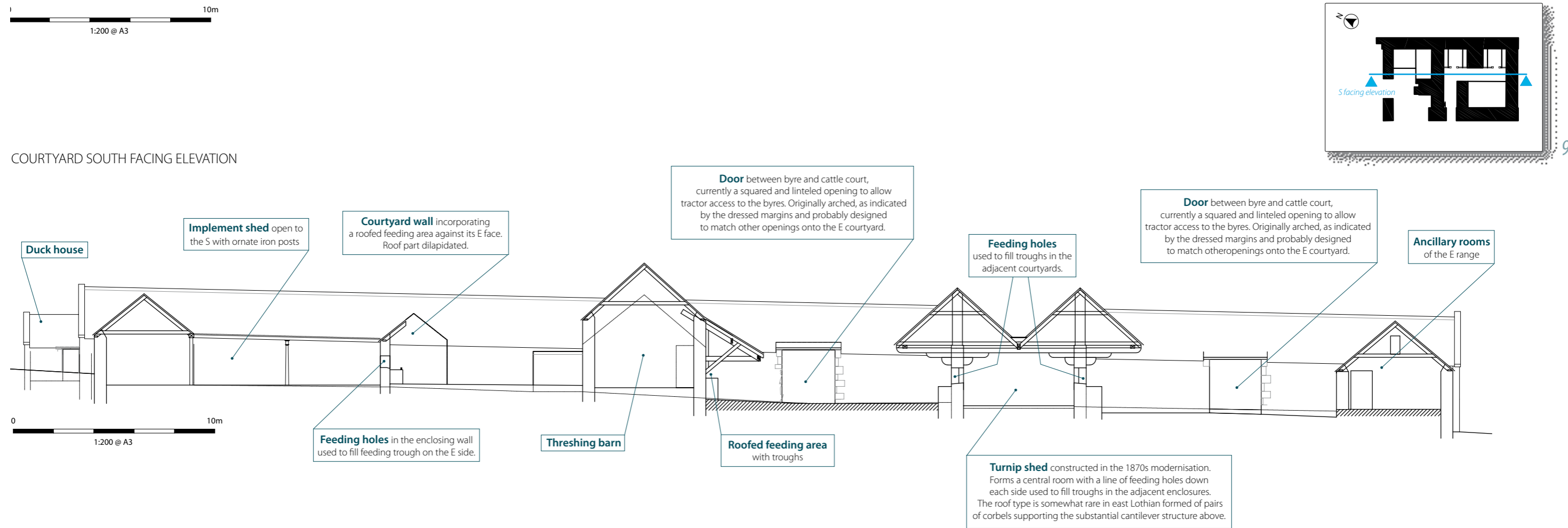




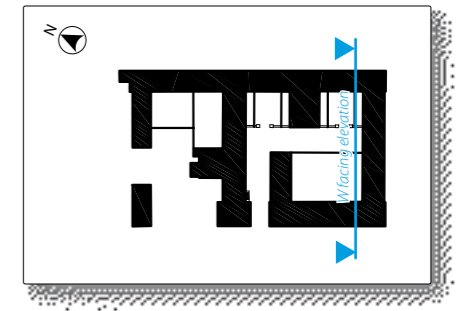
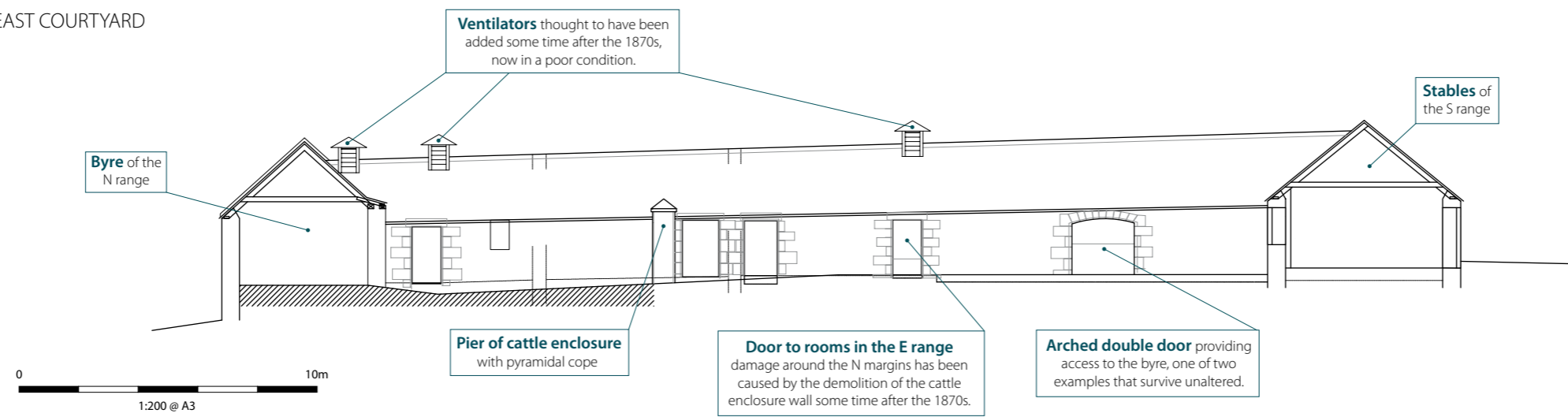
COURTYARD NORTH FACING ELEVATION



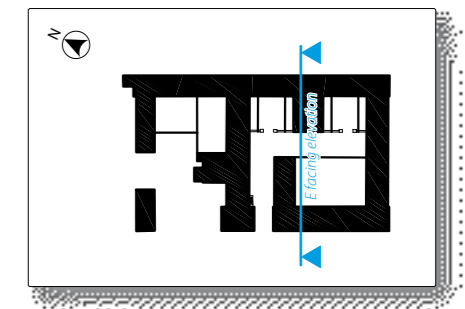
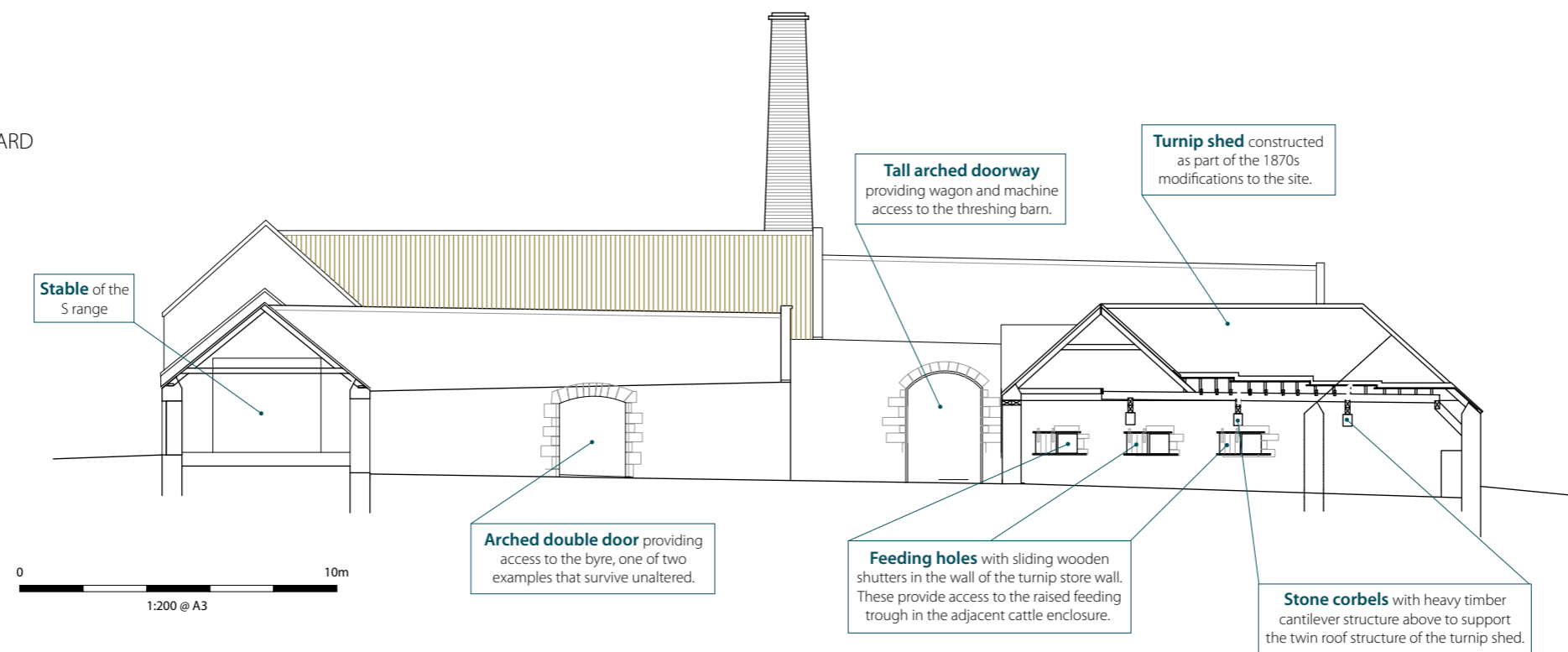
COURTYARD SOUTH FACING ELEVATION



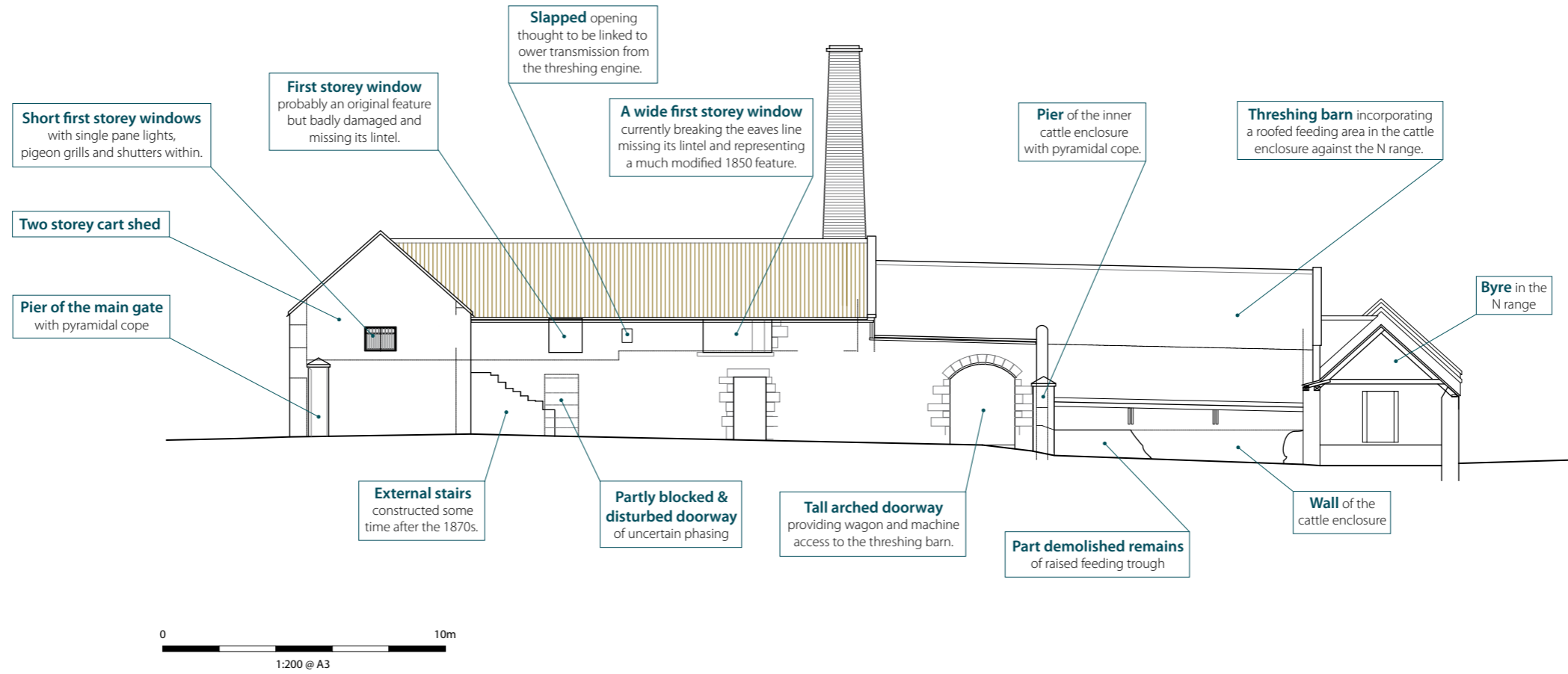
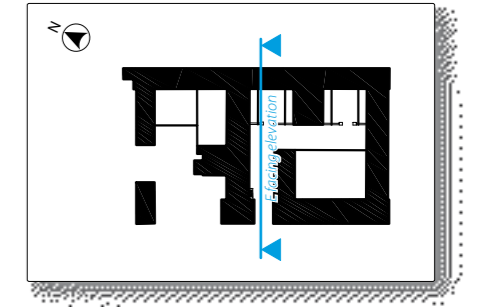
WEST FACING ELEVATION, EAST COURTYARD



EAST FACING ELEVATION, EAST COURTYARD



EAST FACING ELEVATION CENTRAL RANGE



Appendix 2 – Discovery and Excavation in Scotland entry

LOCAL AUTHORITY:	East Lothian
PROJECT TITLE/SITE NAME:	Luggate Steading, East Linton, East Lothian
PROJECT CODE:	LSEL11
PARISH:	Whittingehame
NAME OF CONTRIBUTOR(S):	Tim Holden
NAME OF ORGANISATION:	Headlandarchaeology Ltd.
TYPE(S) OF PROJECT:	Historic Building Recording
NMRS NO(S):	–
SITE/MONUMENT TYPE(S):	–
SIGNIFICANT FINDS:	–
NGR (2 letters, 8 or 10 figures)	NT 59587 74684
START DATE (this season)	January 2012
END DATE (this season)	January 2012
PREVIOUS WORK (incl. DES ref.)	–
MAIN (NARRATIVE) DESCRIPTION: (May include information from other fields)	<p>Luggate Steading, located approximately 2km to the S of East Linton, is one of many mixed economy steadings constructed in East Lothian during the mid 19th century. Detailed estate plans exist for both the original construction of the steading in the 1850s and also significant extensions in the 1870s. Together with the field observations these enable a good interpretation of the development over the last 150 years.</p> <p>The estate plans show that the steading was constructed on a green field site, opposite the farmhouse on the S side of the road, some time in the 1840s. The S range was largely designed to house the working horses and carts. Internally it was constructed around a single courtyard divided into four cattle enclosures each with an adjacent byre accessed via an arched double door. Two of these have now been removed. The west range was devoted to cereal processing and located to provide ease of access between the steam-powered threshing and other machines and the stack yard. The complex was considerably extended in the 1870s with the addition of implement sheds and covered feeding areas to accommodate increasing mechanisation and changing agricultural practice.</p> <p>As a whole the complex has a simple and solid feel to it. Ornamentation, such as the pyramidal capping to gate piers is kept to a minimum but the architect was careful to preserve symmetry, particularly along the long external facades through the use of blind windows and other features. Modifications in the 1870 were on a grand scale with the new turnip house and cattle shades utilising massive stone corbels and timber work that were almost Baronial in scale.</p> <p>As a mixed farm it both enabled the control and management of cattle and the processing and storage of cereals. Many of the post-1870s modifications were less sympathetic to the character of the building and largely designed to allow access by tractors and other machinery to assist with mucking out, feeding and cereal processing.</p>
PROPOSED FUTURE WORK:	–
ARCHIVE LOCATION (intended/ deposited)	RCAHMS
SPONSOR OR FUNDING BODY:	Wilke Construction Ltd.
CAPTION(S) FOR ILLUSTRS:	–
ADDRESS OF MAIN CONTRIBUTOR:	Headland Archaeology Ltd, 13 Jane Street, Edinburgh, EH6 5HE
EMAIL ADDRESS:	tim.holden@headlandarchaeology.com



Headland Archaeology (UK) Ltd
© Headland Archaeology (UK) Ltd 2012

North East
13 Jane Street, Edinburgh EH6 5HE
T 0131 467 7705 • F 0131 467 7706 • E office@headlandarchaeology.com

North West
10 Payne Street, Glasgow G4 0LF
T 0141 354 8100 • F 0141 332 9388 • E glasgowoffice@headlandarchaeology.com

Midlands & West
Unit 1, Premier Business Park, Faraday Road, Hereford HR4 9NZ
T 0143 236 4901 • F 0143 236 4900 • E hereford@headlandarchaeology.com

South & East
Technology Centre, Stanbridge Road, Leighton Buzzard, Bedfordshire LU7 4QH
T 01525 850 878 • E leighton.buzzard@headlandarchaeology.com

www.headlandarchaeology.com